

Devoted to the interests of
the Dutch Breed
"America's Finest Rabbit"



THE DUTCH REPORTER

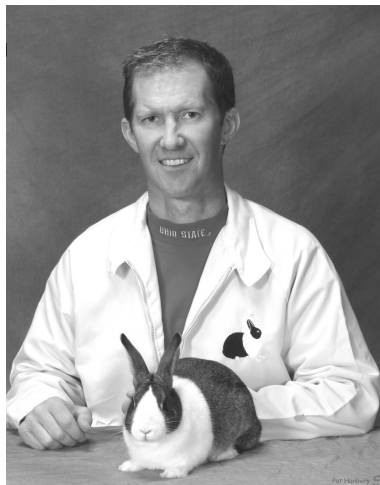
VOLUME 64 NO 4

October/November/December 2006

2006 ARBA National Convention
Fort Worth, Texas

Congratulations, Kevin Hooper

Best In Show !!!!!



Best of Breed Open
Gray Junior Doe
Kevin Hooper



Best of Breed Youth
Gray Senior Buck
Rachel Zimdars

Official newsletter of the American Dutch Rabbit Club

www.dutchrabbit.com

RAISING QUALITY DUTCH
ALL COLORS

Triple M Dutch



Melody Stremkowski
5568 Hwy EE
Amherst, WI 54406
(715)344-2247

mstremkowski@wi-net.com

12/06

JILL'S WILD DUTCH BUNCH

Pedigreed Registered
Black Tortoise Harlequin



since 1975

Matt Gholden

Gholden's Agouti Dutch
specializing in Grays & Golds

JILL E. Pfaff
263 NE Byron Place
Corvallis, OR 97330
email: Jilswlddut@ccountry.net

<http://jilswlddutchbunch.freehosting.net>

12/06



Spring



Hill Rabbitry

12/06

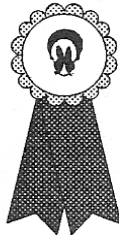
DUTCH

Black, Blue, Tortoise

Rick & Julie Billups

488 Pratt Road
Blanchester, OH 45107

BOB 2000, 2001 NDS
Best Black 2000 NDS
Best Blue 2000 NDS
Best Tortoise 2001 NDS



(937)-655-8657
Jbillups@in-touch.net



12/07



24038 Wilson Frontage Dr
Lewiston, MN 55952
(507)864-2103

Loma Vista
Rabbitry

Who's Lucky
Rabbitry

DUTCH RABBIT

Lilacs, Dutch & Silver Martens

Diana Utter O'Haver
(817) 771-2268
BunnyD055@aol.com

WH "BILL" O'Haver
(915) 261-8504
Marletta, OK 73448

3/07

WISE ACRES Rabbitry



Since 1979

DUTCH - All Colors
Janice & Tammy Wise

8633 Flick Road
Tipp City, Ohio 45371
(937) 667-6417
JANICEW1@aol.com

12/07

PRESIDENT

Kevin Hooper (2008)

12695 Stafford Rd
Leesburg, OH 45135
(937) 780-6934
khoop1@juno.com



VICE-PRESIDENT

Sue Hill (2006)

8495 CR G
Verona, WI 53593
(608) 832-1579
Bunnisoo@aol.com

SECRETARY-TREASURER

Barb Kline (2007)

4664 S Co Rd 591
New Riegel, OH 44853
(419) 595-2050
ADRCSecretary@aol.com

DISTRICT 1 DIRECTORS

Greg Gilbert (2006)

PO Box 2949 250 Grandview Dr SE
Wise, VA 24293
(540) 328-5717
vadutch@hotmail.com

Rick Billups (2007)

488 Pratt Road
Blanchester, OH 45107
(937) 655-8657
Rjrbillups@aol.com

Ray Brewer (2008)

PO Box 85
Saluda, SC 29138
mrdutch@earthlink.net

DISTRICT 2 DIRECTORS

Warren Wiltman (2006)

802 W Tapawingo Rd
Mishicot, WI 54228
(920) 755-4512
wwiltman@sol.net

Dawn Schwartz (2007)

14410 W 163rd St
Lockport, IL 60441
(708) 301-7752
thebeadlady@comcast.net

Dick Gehr (2008)

190 N First Ave
Coal City, IL 60416
(815) 634-2676
rwgehr@aol.com

DISTRICT 3 DIRECTORS

Jill Pfaff (2006)

5520 NW Shasta Ave
Corvallis, OR 97330
(541) 753-0128 cell (541) 207-7196
jilswlddut@ccountry.net
adrcsanctions@yahoo.com

Bob Bergene (2007)

30165 W 154th St
Gardner, KS 66030
(913) 856-7311
bergene@planetkc.com

Pete Nelsen (2008)

14012 44th St SE
Snohomish, WA 98290
(360) 568-4401
petersrab@aol.com

ADRC Web Site: www.dutchrabbit.com

DISTRICT 1 STATES:

CT, DE, FL, GA, ME, MD, MA, NH, NJ, NY, NC, OH, PA, RI, SC, VT, VA, WV

DISTRICT 2 STATES:

AL, AR, IL, IN, IA, KY, LA, MI, MN, MS, MO, TN, WI

DISTRICT 3 STATES:

AK, AZ, CA, CO, HI, ID, KS, MT, NE, NV, NM, ND, OK, OR, SD, TX, UT, WA, WY

SANCTION CHAIR:

Jill Pfaff

5520 NW Shasta Ave
Corvallis, OR 97330
(541) 753-0128 cell (541) 207-7196
adrcsanctions@yahoo.com

SWEEPSTAKES OPEN & YOUTH:

Valerie Worzella

909 Merry Ln
Milladore, WI 53086
valsutch@hotmail.com

PUBLICITY DEPARTMENT:

Angie Aisbet

211 Lawndale Ave
Slinger, WI 53086
(262) 384-1293 rabbitsrus@nconnect.net

DOMESTIC RABBITS REPORTER:

Bob Bergene

30165 W 154th St
Gardner, KS 66030
(913) 856-7311 bergene@planetkc.com
(Send materials by the 5th of February, April, June, August, October, December)

YOUTH REPRESENTATIVE

TO ADRC BOARD:

Andrew Craig

13346 Tango Rd
Bloomington, IL 61704

ADRC WEBMASTER:

Melody Stremkowski

5568 Cty Hwy EE
Amherst Junction, WI 54407
(715) 344-2247
mstremkowski@attwb.net

DUTCH REPORTER EDITOR:

Dick Gehr

190 N First Ave
Coal City, IL 60416
(815) 634-2676
adrceditor@aol.com

HIGHLIGHTS THIS ISSUE

President.....	2
VP Report.....	3
Secretary/Treasurer Report.....	3-4
Director's Reports.....	5-7
BOB & BOS Convention - Youth.....	8-9
BOB Convention - Open.....	9-10
Sweepstakes.....	12-15
Convention Special Ads.....	16-19
Convention Awards Sponsors.....	19
2007 NDS Info.....	21
Ask the Judge/Breeder.....	22-23
ADRC Youth Scholarship.....	24
Welcome New Members.....	25
Special Wins.....	28
Show Reports.....	29-40
2006 ARBA Convention Seller's Class...	42
ADRC Hall of Fame Members.....	42

ADVERTISEMENTS:

Inside covers: Bengtson, Billups, Henley, Kline, O'Haver, Peters, Pfaff/Gholden, Slack, Spellmire, Strandwitz, Stremkowski, Wise

DISPLAY ADVERTISEMENTS

Ramey's Dutch.....	7
Kevin Hooper.....	11
Clover Lane (Imes).....	14
Ms Charly.....	15
OSDRC, KDRC, MDRC, Sycamore	
Rabbitry, Drew's Fur Babies.....	20
Dan Schwandt & Theresa Kortbein.....	23
Bob Bergene, Dennis McAttee.....	25
Gene & Kate Knieling, Moll's Rabbitry.....	27

MERRY CHRISTMAS



ADVERTISING RATES:

	SINGLE ISSUE	YEARLY	TWO YEARS
Full Page	\$ 30.00	\$120.00	\$ 210.00
Half Page	\$ 20.00	\$80.00	\$ 140.00
Third Page	\$ 16.00	\$65.00	\$ 115.00
Fourth Page	\$ 12.00	\$48.00	\$ 81.00
Yearly Breeder Card	—	\$18.00	\$ 32.00
Judge & Registrar Listing	—	\$12.00	\$ 22.00
Booster Listing	—	\$12.00	\$ 22.00
"FOR SALE" Listing	\$ 10.00		
Inside Front or Back Cover		\$60.00 for two years, when available	

President's Report

Kevin Hooper

The ARBA Convention which just recently ended, was a very nice show. The hosts were very hospitable, and the show was well organized. The exhibit hall where the Dutch and a few other breeds were cooped was nice and we had ample show tables for the show! Not only that, but for the first time since the ARBA began requiring a Best in Show be selected (1971), the Dutch was selected for BEST IN SHOW in open! (In 1988, a Dutch won the Youth portion of the show, but never in open.) What an accomplishment to see a Dutch win! We have had many good ones in the running before, with at least one Best 4 Class (Jill Pfaff), and two Best of Group (Stan Goeglein and Rick Lehman), but we were never fortunate to have one selected as BIS! More on this later.

We did have a nice turn out of Dutch in Texas, more than I expected again! 520 were entered in open with 502 being shown, and 228 were entered in the youth. In open, we had only three Dutch from PA, about three from IN, none that I know of from IL, none from east of Pennsylvania, only Ricky Wood from the east, and Herb Kelso sent a few from Carolina. I was the only one from Ohio, along with two I took for Rick Billups. We did have good numbers from Louisiana, some from Texas, Oklahoma, and New Mexico, along with a bunch from Wisconsin, California, Oregon and Washington. The youth had similar representation.

I would like to congratulate our youth winners in Texas. BOB went to Rachel Zimbars of Wisconsin with a nice Gray Sr buck, while Clair Carlson of Kansas had BOS with a Black junior doe I believe. Congratulations to you both!

This issue of the Dutch Reporter should put us back on schedule! It was a quick turn around from the last one which came out in November, so some of you may not have had a chance to submit anything for this issue before seeing the last one. Thanks for your patience and we will be on schedule for the upcoming year. The NEW DEADLINES FOR SUBMISSION OF ARTICLES/INFORMATION FOR THE DR, will be: Jan 15, April 15, July 15, and October 15. We will be sticking to these deadlines, so submit early and often!

Speaking of back on schedule, Barb Kline has things up and running with the Secretary's office! She has been receiving and processing many new members! You will find the "Welcome New Members" column back in this issue. If you need anything, drop her an email or a call and she does respond promptly.

We have been making quite a few changes/additions to how we do our business in the ADRC. One of those changes involves our memberships. We are becoming more proactive in getting new members. The first change was initiated through the Secretary. We sent invitations to those who have dropped their memberships in the last couple of years. We are also working with the Sweepstakes Chair, and will be sending an invitation to join to anyone who shows up as a non-member on show reports. On top of this, we have set up a committee to discuss some other ideas which were surfaced during the General Membership meeting in Texas. Many good ideas came out of that meeting! Theresa Kortbein is the Chair of this committee and will be communicating with those on the committee to further develop those ideas into workable plans.

Also discussed at the Board meeting was the idea of changing our ADRC logo. After a bit of discussion, it was decided to open this up to the membership. What we would like are ideas / new designs that we could use for the various publicity items that we offer. We have ADRC shirts, jackets, hats, patches, mugs, etc. While it was decided not to do away with our old logo, we will offer it on some items, and new ones on others. Send any ideas you may have to either your District Director, or to Publicity Chair Angie Aisbet.

Elsewhere in this issue, please find the scholarship information. This will be the second year that we have a scholarship(s) available. Last year, we gave away two \$750 scholarships. The amount and number were determined by the ADRC Scholarship committee. The members of the scholarship committee were Todd Uran, Barb Kline, and Jill Pfaff. Barb served as the original chair of this committee, but since she has taken over as Secretary, she has asked to be replaced. So, with that being said, we are in need of a chair of the Scholarship Committee, as well as a member to replace Jill, who has asked off as she is on sooooo many committees already. We have had one member come forward and offered to serve on this committee. Now, we need one more, and one of those will need to chair the committee.

One of the means that we use to fund the scholarship program is the submission of the Purina feed circles form bags of Purina feed. So if you are using Purina, cut those circles out and send them to the ADRC Secretary.

I am in the process of appointing committees for the upcoming year, as well as appointing members to fill in for those Board positions where no one submitted a resume for office. Those appointments will be listed in the first DR to be out around March 1.

There was also action taken at the Board meeting in Texas making those who have already been inducted into the ADRC Hall of Fame, and the future Hall of Fame inductees, life members. This is something that most thought was being done, but the HOF was never set up that way. We also will be having a new Hall Of Fame Chair in Bob Bergene. Bob knows most who had made a difference in the ADRC and will do a very good job as Hall of Fame Chair. This is another committee I will be appointing in the next month.

Speaking of Hall of Fame, as you saw, we again accepted nominations for the ADRC Hall of Fame through our balloting procedure. Last year was the first time we tried this, and we received nominations for many who were already in the HOF. So, this year, we listed those who were already in the Hall so as to not have the membership nominating those who need not be. Well, many of you did not read the instructions prior to voting and simply circled one of those who were listed, as opposed to nominating someone else. So, we will look at our ballot to determine if changes need to be made before the ballot is issued next year.

We will also be looking at our process of nominating members for Hall of Fame consideration in the upcoming months. This has been an area where we have changed the process several times for various reasons. Mainly, the original process took a good bit of effort, and it seemed as though we were not getting nominees. Last year, we were behind due to numerous reasons, and the committee simply voted on the nominees submitted by the membership. This is not how the program was designed, but was done this way due to time considerations.

One additional item that was discussed at the Board meeting - the Seller's Class. The original intent of the Seller's Class was to offer everyone a chance to buy quality animals, while the auction also served as a fund raiser for the ADRC. Now, it still has been raising some good funds for the ADRC, and there are still some quality animals in the class, but many feel it has become a dumping ground for those animals which individuals don't sell, so they put them in the

Seller's Class auction? This does indeed happen as many times there are a glut of tort or gray bucks, for which there is not a high demand. So we are looking at making a few more changes, in addition to enforcing those rules already in place. One of the main rules which will be enforced is that the Seller's Class Committee will look over those entered to ensure only quality animals. This has been done on and off in the past, but will be done from now on. Two members have been appointed as the Co-Chairs of the Seller's class, while one more member will be appointed. The Cochairmen are Dan Schwandt and Denny Kline.

I am looking forward to the upcoming year in the ADRC! We are making great strides forward and soon you will start seeing the results.



Vice-President's Report

Sue Hill

Gosh, it's hard to believe the ARBA convention has already taken place and that we are now gearing our breeding up for the coming Spring shows. As you all are most likely aware, Kevin and his super little gray doe took TOP honors out of the 17,000+ animals shown in Fort Worth. What an exciting feat for our Dutch breed!! And to have it done with a gray is even more of a challenge due to getting that ring color just right. If anyone has some pictures they took at the convention, we'd love to have you send a copy to Dick Gehr so we can get them in the DR.

For those of you that were unable to make it down south, you missed one really nice convention. The facility itself was really laid out well. The youth Dutch were in the main room with all the hustle and bustle and had ample room to walk around to enjoy the show during that week. The open Dutch were in a side room so we did not have to battle the crowds on the actual day of judging. Even though the convention center was right down town, it was not difficult in the least to find parking. Many of us from the midwest found that lunch at a little local burger joint was worth checking out after the word got out on how good their burgers were.

Speaking of judging, it went very well with both open and youth exhibitors pitching in to help things run smoothly. Most of the animals were well behaved except

for one excitable junior buck that left his teeth marks on judge Dave Hauser's finger. After taking a break to get his wound cleaned and bandaged, we went back and evaluated "Jaws" once again, saying the little buck was just worked up. Most of us standing around Dave after he returned to judging were holding our breath, hoping we'd not see a repeat performance. Make sure to congratulate the winners from your district when you see them at the coming shows! We have the complete list of all the winners in this edition of the DR.

One of the people that impressed me most while down in Fort Worth was Bob Bergene. He had quite the entry of blues and blacks. Type, color and markings were consistent and very eye catching. Warren Wiltman and I had a chance to talk with him for a few minutes about his herd. Bob said he keeps approximately 25 breeding blue does alone! If Bob is breeding these ladies three to four times a year, that is a lot of blue babies right there to choose from, so it's no wonder he can churn out an entry such as the one we saw in Texas.

Our next convention in Grand Rapids, Michigan is already being highly anticipated for those that plan to make the trip. If you are thinking of going, and are interested in staying at the Amway Grand Plaza Hotel, the ARBA headquarters that is adjacent to the showroom, you can make your reservations for a room now, and judging by what people were saying around the showroom, a lot of people plan on booking at that hotel.

Thank you to all the Dutch members who have been so patient with the club as we went through the changes we have in the past year. Things are finally getting back to an even plane. We are targeting the first of the year to be all caught up. It has taken an incredible amount of time and effort between the board to get this all done that is not apparent to many from the outside. Some new faces will be on some committees being appointed and with them will come fresh ideas. Please remember to talk with your district director if you have any concerns or news you want to share.

Good luck with all your breedings for the spring shows. Get the lights on in the barn to stimulate those does into being receptive, and plan ahead for juniors for NDS in April. Looking forward to seeing you all as the new year brings samples of what is in your bunny barn!



Secretary-Treasurer Report

Barb Kline

First I would like to congratulate all the winners at this year's ARBA Convention in Ft. Worth, Texas, Youth BOB, Rachel Zimdars of Wisconsin, Youth BOS, Claire Carlson of Kansas and Open BOB and BOS and Convention BIS, Kevin Hooper of Ohio. I really missed not being able to go but thanks to lots of phone calls, I was kept informed of all the happenings! I would like to also thank Jill Pfaff for filling in for me at Convention.

The idea of Jill being able to have her own account to deposit sanctions is not going to happen due to the requirements of the bank. I have purchased Jill her own deposit stamp to insure the safety of the checks she is sending me in the mail. We are on a very timely schedule now with Jill sending me sanction checks once a month along with her commission invoice. Monthly checks are also going to the Publicity and Contingency Fund along with my secretary's commission. As soon as Dick has the DR in the mail, I am processing his editor's fee and Valerie is getting paid whenever she sends me her invoice. All in all, the bills are back to getting paid timely and deposits are being made once a week. I have published a 13 month financial statement in this issue since none have been published for quite sometime. In the future, the financial statement will be for a 3 month period.

Membership renewals are being received daily largely due to the letter that was sent to all the members that had expired one to two years ago and the letter that I am sending at the beginning of each month to members expiring that month. Whatever members that I have on file with an expiration of one year or more at the beginning of 2007 will be dropped from the membership. This will enable us to have an accurate membership listing. I have processed seventy-four new memberships! A new edition to the DR will be a listing of new members to the ADRC welcoming them to the club. Dick Gehr has modified the membership card so that starting the beginning of 2007 all the cards will have the membership number and the dates will be the date the member joined to the date the member expires. This way at anytime a member can see how long they have been a member in the ADRC. It will also help me in issuing the membership pins.

Many of you have given me your email addresses and birthdates. The membership application has been modified also to include this information. In the next sev-

Director's Report

District One
Ray Brewer

Boy, did I pick the wrong ARBA Convention to miss! A dutch winning Best in Show? That has got to be one terrific dutch! Congratulations Kevin. Your many years of hard work has paid off big time.

Maybe it's just me; but, I believe that the quality of our favorite breed has improved significantly over the past few years. At least they have down here in the South. Hey, interest in dutch and the numbers shown here are up this year. Case in point, I judged a show recently in NC where about 75 dutch showed up. There were 15 black junior does of which 10 were of superior quality. The winner of the class went on to win BOB. This was an event with several speciality clubs hosting 2 shows apiece. At the end of the day that little black jr. doe was selected "Best of the Best" by a panel of judges from all the specialty show winners. Fred Mullinax asked me later if I had ever judged a junior doe class with the quality of the animals shown that day. Well, the truth is that I've never encountered a class of dutch like that at a local show! OK, maybe the top 15 at a National show; but, never at the local level.

I want to pass along my thanks to my good friend, Herb Kelso for his efforts here in the Carolinas. Herb is a tireless promoter of our breed who never seems to run out of quality dutch to sell (or give away) to help newcomers to our hobby get started on the right foot. He is also the type of fellow who enjoys seeing our breed handled and judged well whether he wins or not.



Director's Report

District One
Rick Billups

Well the 2006 ARBA Convention is now behind us and a big congratulation goes to Kevin Hooper for winning Best in Show! Kevin had the honor of winning an award that many dream of but few have achieved. Kevin won BOB Dutch with a Gray Jr. Doe and he also won BOS with a Black Jr. Buck. The youth show was won by Rachal Zimdars from Wisconsin with a Gray Sr. Buck and Claire Carlson from Kansas won BOS with a Black Jr. Doe. It's time for all of us to start planning to attend the 2007 Nationals in Michigan. I'm sure the Michigan group is hard at work planning for a successful show. Please look for the NDS information in this issue of the Dutch Reporter.

As many of you know Barb Kline assumed the role of Secretary-Treasurer a couple months ago and she's doing a great job. Please remember to direct all correspondence to Barb. Barb's article in the last DR shows how organized and dedicated she is to her new position.

I don't have much news to report from my district. I don't make it to local shows since the majority of them are held on Sundays. The Ohio State Dutch Fall Show will be history by the time you get this issue and I hope I can report a successful show in the next DR. I know one topic of discussing at the show will be possibilities of the Ohio Club hosting a National Dutch Show in the near future. The Ohio Club is always eager to host an NDS and always strives to put on one of the best.

As many of you know I've been serving as a Director of the ADRC for the past 10 years and prior to that during the mid 80's. Julie and I also served as the Publicity Department chairman for 5 years and thoroughly enjoyed the learning experience. I have always looked at serving the ADRC as an honor and a privilege and not something you take lightly. I know many of you don't see me at your local show and you probably wonder why I'm holding this office versus someone who attends most of the local shows. I once asked a good friend his thoughts on this and he responded "how many times have you been to a local show and someone came up to you with a question concerning the ADRC", my response was very seldom. But I do think 10 years is too long for one person to hold one office. I will not run for reelection

next year but will agree to fill the vacancy if no one steps forward.

My passion is to continue to serve the ADRC in what ever manner the membership requires, I will probably run for an office again in the future. It will be hard to sit on the sidelines for very long without getting involved or voicing my opinion. The ADRC has been part of my life for almost 30 years.

Enjoy your Christmas Holiday



Director's Report

District Two
Dawn Schwartz

Hello Everyone,

Well all are back safe & sound from the ARBA Convention- I'm assuming. That was one long weekend for me, I lost track of how many times Dan said "Boy I wish we were in Texas". We were lucky in the fact that a very good friend of ours kept us posted on all of the highlights. And when I say highlights I mean HIGHLIGHTS! I think I got the phone call but a couple of minutes after the BIS was picked, what a GREAT surprise when we heard a Dutch had one. Even happier when we heard that it was Kevin Hooper with a Grey. I was able to talk to Kevin on a cell phone while they were just finishing up taking pictures, I don't think it had even sunk in as of yet. What a wonderful accomplishment for Kevin & our ADRC. Dan & I can not think of a more deserving individual to be given this tremendous honor. Kevin we believe is the Heart & Soul of this Dutch Club! It is great to know that his name will go down in history books for many future Dutch breeders to read about, this will be only one of his many accomplishments in his rabbit breeding. CONGRATULATIONS Kevin you deserved it! For those of you who have not heard, Dan injured his knee about 6 weeks ago, that is the reason we did not attend ARBA. He's looking at a minimum of one surgery, possibly three. He tore his ACL/MCL & cartilage in his knee. We are hoping on attending our Illinois shows which will be starting up in February. To say the least Dan & I are anxious to get back to showing our bunnies.

See you at the shows (we hope)



Director's Report

District Two

Dick Gehr

As the holiday season nears, I am sure we can all find many things for which we can be Thankful..... Friends, Family, Health, Happiness, and more.

I am Thankful for the many friends I have made in this rabbit hobby over a span of 30+ years. I reflect back on times when I was considered the "new kid" on the block, and the "dummy" that had the wild and inconceivable ideas.

It is now my turn to sit back and designate others as the "new kids", and watch them in their attempts to make a difference. I do not believe anyone's ideas are "wild or inconceivable", as it is dreams and visions of things to reach for that make us all progress and grow with the times.

The often times asked question of "Do the men make the times, or do the times make the men?" haunts me nearly every day. Have some of the decisions and efforts I have made over the years helped to shape the future, or was the future already shaped and I just happened to fall into it at the right time and moment for my ideas to be fitting?

I know.....who really cares?? I guess that is what most of you are asking yourselves right now, amid the self comments of "I never knew he could be that deep in thoughts", or "is he hitting the juice again?"

Actually, without visions and foresight, I believe we would all remain stagnant and not make any progress. Look at the evolvement of the computers, wrist watches, television sets, telephones, etc. Without vision and progress we would still be counting our fingers and toes, looking at a sundial, having to look at each other in the evening instead of ESPN, depending on the pony express to get a message to someone in the next town or state, etc.

Where is all of this going, you ask? I am not really sure. But I can tell you one thing that has remained constant throughout all of this. Rabbits.... their makeup, the pleasure obtained from them, the camaraderie and friendships we have all gained, and the relaxation we all get from them.

Without the furry little critters to draw us together on the weekends, what would we do? I would have a lot less experiences, friends, travels, and enjoyment. I certainly would not have been in Fort Worth, Texas a couple of weeks ago visiting with people from all over the United States as well as other countries. I would not have had the pleasure of meeting new people that I hope will call me their friend in the future (Hi, Joseph!). I would not have seen Kevin Hooper win Best In Show

at the ARBA National Convention, beating well over 17,000 other rabbits. And I would not be writing this article right now.

I am indeed Thankful for being right here, right now, whether I have created this moment, or whether it was created for me. Working on rabbit things, being a part of rabbit clubs, having the rabbit friends that I do, and looking forward to more rabbit stuff each day has become my passion. I know I am not alone, and am sure I will never be alone as long as I have one little rabbit outside, whether it be a Mini Rex or a Dutch.

However, I can honestly say that without the Dutch rabbit, I would not have met those of you reading this message, and that would make me a much poorer person.

The ADRC Board meeting in Ft Worth resulted with actions being discussed and taken that will shape the future of the ADRC. Or will they? Perhaps the shape was already there, and we all just happened to be called to that Board meeting by some uncontrollable force that already had our future planned. No matter, I look forward to some tremendous strides being made within the ADRC in the very near future. Good people, new people, old people, or whatever, this club is on the move and will continue to progress and be one of the leading forces in the rabbit industry. Stay onboard and be a part of it all.

I am sure the ADRC will move forward with our new secretary, Barb Kline. Most know Barb for her involvement in the Ohio State Dutch Rabbit Club, and are aware of the efforts and leadership she offers within that club. I can tell you that she has made every effort to get the ADRC on the right track, and has a lot of foresight and plans in motion. I am sure we will flourish under her guidance, because she will make things happen.

I look forward to an excellent 2007 NDS being held in Michigan. I know most of the players, and they have quite a game planned for us all. I am sure their efforts will produce one of the best NDS we have experienced. They will make it happen (or will it happen because they have been drawn to the times?). No matter, show up and I am sure you will go home with a feeling of having attended a great show, seen great people and great rabbits, and having great expectations for the next ARBA Convention and NDS.

May you all be blessed with a great Holiday Season. Happy Thanksgiving, Merry Christmas, and Happy New Year.

(I have given up on asking Santa for anything, because I am quite sure after Kevin getting his early Christmas present that there isn't much left for you and me!)



Director's Report

District Two

Warren Wiltman

Here in Wisconsin, the show season is over. The last of the rabbit shows are usually in October and they will start up again in February. It will be good to see your friends again after a Winter lull in the action. It was good to see that the Upper Midwest Dutch Rabbit Club was so well represented in Texas. That's great! I believe the club did very well and it was good to see that so many made the trip. Everyone was talking about Texas in the Summer, looking forward to having a good time. Like every trip, the time goes too quickly and you don't get out much to see the sights.

Over the year in the Dutch Reporter, there have been opinions on the point system for judging the Dutch rabbit. It has sparked some discussion among the breeders in this area. Since it appears that at least a couple people I know agree with me, I would like to give you my opinion on the matter.

I don't believe the judging standard needs to be changed. The Dutch rabbit is the king of the marked breeds out there and we shouldn't do anything with the point system to distract from that. Good judges use the word balance, which seems to automatically shift more emphasis to good body type, fur condition, and color. A judge does not want to send a rabbit up for Best of Breed that he or she is not completely happy with, it's a matter of pride and knowledge knowing it won't go far in Best of Breed competition.

Let's say you're at a rabbit show and it's time to pick the Best of Breed in Dutch. How is the judge doing it? I usually see them doing a lot of rabbit posing and checking the condition with a glance at the markings. Do you really think the best marked rabbit won or the one with the best overall balance which means a good typed rabbit with good condition too? If you believe this as I do, then the judge is already allowing more for type and for fur condition.

So why doesn't Dutch win more Best in Shows? It's just natural with all the marked breeds. The animal needs very good type, very good condition, and marked according to the standard very well. It's the same in poultry. Usually an all white or all black bird will win. With a marked or colored animal it's just easier to find something wrong with it.



Director's Report

District Three
Jill Pfaff

Hello fellow Dutch Fanciers...wow what a year for Dutch with our largest ever entry for National Dutch show in Washington, PA and now to top of the year our club President Kevin Hooper wins Best In Show at the ARBA Convention in Fort Worth, Texas with a Gray doe !!

I talked with Dick Gehr who told me that the official ARBA records for Best In Show only go back to 1971. I happen to know that back in 1969 Calgary, Canada Mr. Leonard Weir of California won Best In Show with a Blue Dutch, he won BOB & BOS with a pair of Blues that year. The only two people I know of to come close in the Open Division are Rick Lehmann in 2002 with "Percy" a Blue buck at the Peoria, Illinois Convention winning group and myself in 1993 at Puyallup, WA winning Best 4 Class (before the group method) with a Black buck. I know there have been big wins in Youth also by Megan Kline and Katie Bicklehaupt but don't have all the dates. Well I hope this grand event will inspire Dutch breeders everywhere.

It was great to see all the breeders that made the trip to Texas this year at ARBA Convention we had a fine showing of quality Dutch with just over 500 in open and 219 in Youth. Congratulations to all the winners.

Here in Oregon we have just finished our last show of the year with a double open and double Dutch Specialty hosted by the NW Dutch RC. We had 88 entries and the stand out winners were the Steels with Graham Shields taking BOB three times and Reserve In Show on the second day with a beautiful Steel doe. Hilary Wittrock had BOB once and BOS twice during the weekend with her Steel buck. The weather was a bit cold and dreary but the companionship in Dutch breeders was warm. We had Ms Marijean Whyte all the way from Sooke, BC Canada along with Washingtonians Arnold Ferguson, Hilary & Lisa Wittrock. We plan to have our next double Dutch Specialty show with the Fire Mountain Netherland Dwarfs February 17, 2007 in Newberg just south of Portland.

Best wishes to all for a happy, healthy holiday season.



*May Your
Holidays Be
Merry !!!*

Director's Report

District Three
Bob Bergene

History was made as we all scooted our boots to Texas. The Dutch was to win Best In Show at the ARBA convention for the first ever. What a history making event!! Congratulations Kevin on such a great win, with your Gray junior doe. Kevin also won BOS with a sharp black junior buck.

In the youth division Rachel Zimbars won Best of Breed with a Gray Sr buck and Claire Carlson won Best Opposite with a nice Black Jr Doe. Congratulations Rachel and Claire and to all the youth that showed Dutch down in Fort Worth, I know it was a great experience and a lot of fun for you.

The awards from the ADRC at the Fort Worth convention were very nice considering that we forgot to pass the hat in Indianapolis at the previous ARBA convention. Thanks to all who contributed money for these awards. Especially, thanks to the Sparks family of Texas for donating the towel awards. This year we did remember to pass the hat at Fort Worth, so we can anticipate some nice awards again at Grand Rapids, Michigan for next year's ARBA convention.

Don't forget to make those hotel reservations at the Dutch headquarter's hotel (Clarion) for next springs NDS in Kalamazoo, Michigan. Have a great Holiday season!

Best regards



What ideas do you have for a modern logo? We would like to see your ideas!

Old Logo



New Logo?



We are looking to use new designs on our Dutch merchandise, and in the DR. Send your ideas to any Board member or Publicity Chair Angie Aisbet.

Ramey's Dutch
Quality Blue & Chocolate

Ethan & Joe Ramey



2798 S Arthur Rd
Paragon, IN 46166
Phone: (765) 537-9509

12/06



ED: We welcome articles from all members pertaining to their rabbitry, breeding program, how you got started in Dutch, influential people in your Dutch hobby, or any article that would be of interest to the ADRC membership.

Please feel free to submit an article with pictures if desired. If it is something that may be questionable as to whether we can publish it, we will contact you with any concerns.

Those that may take pictures at any show, NDS, or ARBA National Convention, please share the pics with us so we may possibly use them. Just send any digital pics to me at

Adrceditor@aol.com

We will try to use as many pics as we can in each issue, so send 'em on!



Winning Best Youth Dutch at the ARBA 2006 Nationals

By Rachel Zimdars

This year I was fortunate to win Best of Breed for Dutch at the ARBA nationals in Texas. This was my first time at a national show and I was very excited not only when I won, but also with beings able to attend such a big and important show. My fortune of being able to attend and of being awarded at this prominent event was possible because of my commitment to raising rabbits. Further more I must give credit to benevolent people who guided and supported me and my interest. Through my efforts and others help I discovered much gratification in the hobby of rabbit showing.

I got started in rabbit showing through 4-H when I was in third grade. My first rabbit was a gray Dutch, whom I named Cotton. By the end of my first year showing, I knew that this was going to be a long term hobby.

I had to try and learn much on my own because there were not many people who I knew to help me in my first few years in the rabbit business. About two years ago, though, I meet Dan Schwandt and Theresa Kortbein. They shared with me what to look for when buying a Dutch, and that markings are not everything with these rabbits. On the day of judging, they were there to support me, which made me feel not so nervous. They have been so helpful in getting me good starts for my lines. They have shared all their knowledge with me which I am truly grateful for.

As I said earlier, this year was my first time attending any nationals with my rabbits. I brought four Dutch, a chocolate jun-

ior doe, gray senior doe, gray senior buck and a tort senior doe. I was very excited about being there, though a little nervous. I did not know what to expect, or what to do once I got there. But I traveled with people who had gone to nationals last year, and they helped me through check in. After check in, I went to the Dutch booth where I met Jill Pfaff. She helped me understand what to expect on judging day, such as I do not take my rabbit to the table. She also explained and helped me to put a rabbit in the Dutch rabbit auction, informed me as to where and when the Dutch banquet was to be, and how to become a member of the ADRC.

On Monday, the judging day, I was very excited to show my Dutch. At the affair, I could not believe the number of youth Dutch there, which was 220, and how long it took to judge them. When the judge made it to the first variety I was showing in, chocolates, I was grateful I finally got to see one of my rabbits get judged.

I was not expecting any of my rabbits to do very well; they were going up against all these impressive other rabbits, and I thought mine could not possibly be that good. Boy was I wrong. My first rabbit up on the table, chocolate junior doe, took first place. I could not believe it. My gray senior buck also took first. I thought there had to be a mistake. Then, when it came time to pick the varieties, I figured that was where I could expect another's rabbit to beat mine. I was proven wrong again. By this time, some of the open people were over watching and helping write for the judge. When the judge picked the Best and Best Opp. Varieties, I was shocked. My chocolate took Best Opposite Variety, and my gray buck took Best of Variety. The judge pondered a very long time in deciding BOB and BOS, and I was getting more and more restless. When he had decided, he talked about two very nice animals and how hard it was to pick between them. It came down to one having just a little bit better markings than the other. He said that the Best of Breed was going to be my gray senior buck. After hearing this, I nearly passed out. I was overwhelmed and could not stop smiling.

This was such a good experience for me. For all the care I give to my rabbits and all the support and knowledge I receive from others to help me care for my rabbits, I feel very appreciative of the awards my rabbits and I receive. I am planning to attend NDS this coming year for the first time and the ARBA nationals for a second. In the mean time, I will continue to do my best to raise my rabbits with tremendous care; not necessarily for awards, but for the love of the hobby, which is a great reward in itself.



Claire Carlson - Shawnee, KS

Best Opposite Sex Youth Dutch 2006 Nationals

I love both playing sports and showing rabbits. Some of my favorite memories include making the only hit in a national softball tournament game against a formidable Oklahoma team, winning my first medal in Junior Varsity cross country and scoring a goal that helped my soccer team win the league championship. But perhaps the biggest thrill of my life occurred at this year's ARBA Convention in Ft. Worth, Texas when the little Black Junior doe that I bred and showed won Best Black, Best Junior, and then Best Opposite Sex Dutch. Here is my story.

Hi, my name is Claire Carlson, and I am a freshman at an all-girls high school in Kansas City. I am the Co-President of my 4-H Club, Blue Rivers Wranglers, and I enjoy judging rabbits and livestock (hogs, cattle & sheep) as well as 4-H public speaking on both county and state levels. I have been breeding and showing rabbits since the 2003 Wichita ARBA convention. My dad teaches me to be competitive in everything I do, but that does not mean winning all the time. He just expects that I put my best foot forward. For example when my rabbit goes on the table, it has been trained to sit and the shine on its coat illustrates it has been well taken care of. If I win, great! And if I do not, that's okay too.

I show New Zealand Whites and have been fortunate to win several Best-In-Shows including the 2005 Missouri State show. In addition my New Zealands won three classes at the New Zealand Nationals

last spring including Champion Meat Pen. On the other hand, my Dutch have been a different story. It's been difficult to raise Dutch rabbits that are good enough to show. The first rabbit I ever showed was a blue Dutch buck. When the judge turned him over, looked up his nose to find a freckle, and then disqualified him, it was quite a shock. At that time I did not even know what a freckle was, let alone it being a disqualification!

Now to tell you about my Best Opposite Sex Junior Black Doe, Thunder. Breeding a rabbit of this caliber took great genetics and lots of luck. The three keys to Thunder's genetics are:

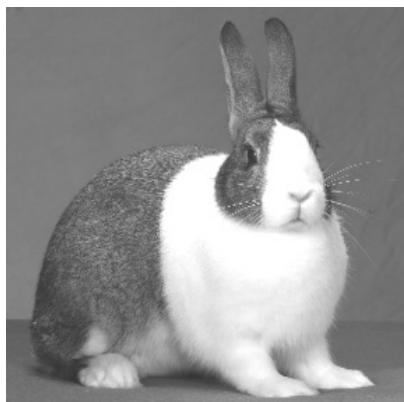
At our 2004 local county fair, I bought a buck from fellow 4-Her Julie Bergene. He is a great bodied buck whose mother was a littermate to Rick Lehmann's famous Best-In-Show buck, Percy.

In Spring 2005, I could not go to Dutch Nationals, so Rick Lehmann picked out a Howdie Dunmire black doe for my rabbitry. The mating of these two produced Carlson's 16, the mother of my show winner.

Next, we went to Bergene Rabbitry to look for a buck. Mr. Bergene sold me a gorgeous blue buck that he was taking to Nationals. When he sent me the pedigree, I was surprised to see the buck had three open show legs and already qualified to be an ARBA champion.

If I never have as great of a day showing my Dutch again as I did in Ft. Worth this year, it will be okay. The thrill of winning 2006 Best Opposite Sex Dutch will last a lifetime. I want to thank the judge, Eric Mixdorf, for selecting my rabbit.

I would also like to thank all those adults that make youth projects such a fun filled learning experience. Keep it up because your smile, enthusiasm and sharing of knowledge do make a difference. And thanks to Pam and Jenna Persons for letting my mom and me tag along with them to the 2006 and 2005 ARBA shows. And last but not least, please look up Cedar Hollow Rabbitry (that's me!) at this year's shows to say hello because "We're not just about New Zealands anymore!"



The Stars Must Align!

by Kevin Hooper

Wow! That was about all I could utter after my Gray Jr Doe was selected for Best In Show at the ARBA Convention in Texas! Yes, that's correct, a Dutch won Best In Show!

I was fortunate enough to be the owner of this Dutch. As I mentioned in my President's Report, we have been close before, with at least one Best Four Class and a couple of Group winners. But, this time it happened!

Now, believe it or not, in the mid to late 90's, I said then that one of my goals was to win the ARBA Convention, but I wanted to do it with a GRAY. Now, the chances of that are extremely slim - kinda' like winning the lottery or something. Everything has to fall into place, or in other words, the Stars must align!

What does it take for a Dutch to win? If it is the best in the building, does it automatically win? Not hardly! This is one of those things that after it occurs you hear people talking about that place that is really, really hot, is freezing over!

A great Dutch on the table for BIS has no chance - if the judge does not care for Dutch! Many judges (and I have heard this from judges who were not there) think they must be perfectly marked to win! It sure would help, but they don't have to be perfectly marked. None of the Convention winners were ever perfect! They usually are pretty close, but I have yet to see a rabbit that could not be improved?

Here is how the alignment happened, starting in February of this year. I had been having trouble getting any Gray babies. I had two nice bucks and several good does. But, either the does were not conceiving, or they were not raising their litters. So, step one was to bring in a couple of does. I contacted youth breeder Katie Bickelhaupt of Ohio to see if she might have any gray does available. I would be seeing her at a show the end of February. Her grays go back to some of

mine and she had a few available. I bought one older brood doe, and one young one. The young one was a bit longer and narrow, but was marked well with very good stops (what I have been lacking on my grays). Star number 1 - aligned!

I did not have any luck with the older brood doe, and the younger one would not breed. I was using my better Gray buck (Best Sr Gray at this Convention), but she would not conceive. Finally, I tried his father and she conceived. Star number 2 - aligned!

Now this young doe was something else! I hated her! Not for how she looked, but how she acted! She never quit running around her pen. She did not want to be carried to or from the bucks cage. She proved this by biting my shirt over and over. She was not pleasant. I decided after her litter was weaned, she was out!

Well, she had 5 that first litter on June 20. I sold one as a pet and initially kept four, one buck and three does. Two of these were very well marked, and resembled the mother mostly, with some characteristics of the father. I sold off one of the does, with intentions to sell one the remaining does. I did not have many looking for gray does, so the sale doe went to Convention as well.

I began showing the best buck and doe in late September as they matured quickly. Both were doing well, with the doe winning her class all three times at a triple show, including a BOV and a BOSV to her brother.

The Monday before the Convention, I made "For Sale" signs for all of my sale rabbits. I was not sure which ones I was selling, but I knew some I was not selling. The winning doe, had a "For Sale" sign! (I still have it for proof!)

I looked though all of my entry on Thursday to make final decisions on who was staying, and who would go. I had two good young senior Gray does, and several junior does. Since the seniors were at breeding age, those two stayed. Now for the junior does? Here is how I look at my animals. Do I really need them???? Well, I decided the winning doe should probably stay, but I'll take her sign and pedigree just in case. She looked good, and I felt she probably had my best chance at Best Dutch. Star number 3 - aligned!

Sunday evening, both myself and Valerie Worzella were in the building grooming/ feeding our animals. I told her she should do well with her blues. She then asked me would do well in blacks, chocs, and on down the line. I told her I had not looked at all of the blacks, but I had some black bucks that would do well. I thought Ricky Wood had the chocs with his choc buck, was not sure on torts, I had a good steel Jr doe, and I had the gray.

The show went well. I was not there for the first four colors as I was judging Fuzzy lops. I finished about the time the steels began. Glen Carr and Dave Hauser were our judges. Glen was finished before Dave, so he did the Gray Jr Doe class. The doe won, while her sale sister went third. Star 4 aligned!

Now those were the easy stars! Now the hurdles began to get higher, and the stars much harder to move! Dave was the Senior buck judge of the Grays, so he was selecting BOV. Would he like the doe, after all he did not judge the class? He did! Star 5.....

Glen was selecting BOB. I knew he liked the Gray doe, but I did not know how well he liked Mixdorf's Black doe, or Ricky Woods' choc buck, or It came down to the black doe and the gray doe. He looked at them each a few times. The he went to the bucks for BOS, and the best Sr of each color for Best Sr. Then he looked at the black doe again. Usually you can tell which way the judge is going. My Gray doe was done! He did not look at her again, he was going with the black! I had never won a big show under Glen. Always did well, but never won. He announced Best Dutch as theGray doe! Sure fooled me! Big Star number 6, aligned!

The next afternoon, the Best In Show selection began. They first did Cavies, followed by youth rabbits, then open. I had seen what the groupings were when I was in the office the day before. The Dutch was with the other marked breeds, and the full arched breeds. Now, there would be some good ones in there, but I thought this was a winnable group! Star number 7, aligned!

Now who would be the judge! I had heard a rumor of who had it, and I thought, if that was the case, I was done! They had all of the group judges judging at the

same time, then the Best in Show selection was made. The arena where the judging was held was warm, while our area where the Dutch were cooped was nice and cool. so, she stayed in her cage until the BIS youth was complete. It seemed to take forever!

They finished the youth. I brought the doe over, and waited in line while all of the breed winner were filed through a small opening and told which table to take their breed. After getting cut off by several breeders, I made my way over to the Group two table.

The judges were announced. Group 1 was Bruce Ormsby, Group 3 was Chris Hayhow, Group 4 was Alan Ormond, and Group 5 was Connall Addison. All of which I knew liked Dutch! All of which I kind of knew what they liked in a Dutch. The Group 2 judge - which I knew nothing about - Cliff Dick. I had no chance! The biggest Star yet - would not budge!

Cliff began judging the group. First the Britannia, then the nice looking Tan, a Spot, my Dutch, the Checker..... He flew through the Group! He did set my doe up well, and took as much time with her as any. He looked at each one once, and left the floor! Wow, that was quick. A few minutes later, he came back and looked at the Britannia, then the Harley, the Tan, even the Belgian. He never glanced at the Dutch. I thought she would at least get a second look. Stupid Star!

They had each judge announce the group winner. Bruce selected the English Angora for Group 1. They asked the winners to come down. I had sunken back in my seat by now, knowing he was picking anything but the Dutch! Cliff announces the winner as being..... the Dutch! As I pulled myself out of the depths of my seat, I could not believe it! Wonderful Star!

Now, what would win the other Groups. I knew the Mini Rex was out as

it had been beaten in Group1. I did not want to see a Mini Lop, New Zealand, Californian, Silver Marten, Havana, Florida White, Dwarf, or Holland lop! Those seemed to be the normal winners. The next Group was won by the English Lop. Hmm. Group 4 was won by the Dwarf - ooh! Now, what would come out of the commercial group? It was announced that the Group 5 winner was - the Champaign! So, I had to beat only four others now, the English Angora, English Lop, Netherland Dwarf, and the Champaign! I thought, this was winnable! I have a shot, but who would be the judge?

They did not announce the names of the winners so the selecting judge would not know who had animals in the final bunch. The Best In Show selection would be made byGlen Carr! Star number ? - aligned or not?? This could go one of two ways. He would either not pick the Dutch as he judged her and she would have to be far superior to the others, or he would simply pick the best one.

Glen spent equal time with each. The Champaign looked really good. The Dwarf did not show herself that well. The English lop looked fantastic! The Angora looked wooly. After a few words Glen announced the winner as the Dutch! The final Star - priceless!

Now, I'm usually not speechless, but I sure was here. Stunned was also a good description. All I could do was shake my head in disbelief! I would have liked to have been all smiley, but as happy as I was, you just don't know how to react.

The Stars did align! But in retrospect the most important star was getting the mother of the winner from Katie Bickelhaupt! So, something that may seem very small and insignificant, may be the most important step on a long journey!

ATTENTION ALL YOUTH:

The Dutch Reporter will be featuring a page just for youth.

We want your photographs, stories, artwork, and poems.

Mail or e-mail to:

Julie Hume
1396 W Kinsel Highway
Charlotte MI 48813
517-543-3358
odie@cablespeed.com



ARE YOU GRADUATING FROM YOUTH CLASSES TO OPEN CLASSES IN 2006?

Then we would like to honor you in the Dutch Reporter on a page congratulating our graduates.

Mail or e-mail your picture, name, birth date, city, and state to:

Julie Hume
1396 W Kinsel Highway
Charlotte MI 48813
odie@cablespeed.com

Quality Dutch in all Colors

Kevin Hooper

ARBA Judge
President ADRC
Will Ship

2001 NDS - Open Best Dutch - Bred by Rick Billups
Sire was Hooper's KT240
2002 NDS - Open Best Dutch - Bred by Jay Imes
Dam was Hooper's KG468
2002 NDS - Open Best Opp Dutch - Bred by Ed McKinley
Sire was Hooper's KS260
2002 NDS - Youth Best Dutch - Bred by Adrienne & Mac Gearhart
Grand Sire on both sides Hooper's KS257
2002 NDS - Youth Runner Up - Bred by Megan Kline
Sire was Hooper's KT350
2002 NDS Youth Best Opp Dutch - Bred by Steven Stump
25% Hooper Breeding
2003 NDS - Youth Best of Breed - Bred by Katie Bicklehaupt
100% Hooper breeding
2004 ARBA Convention - Open Best Dutch
Owned & Bred by Kevin Hooper



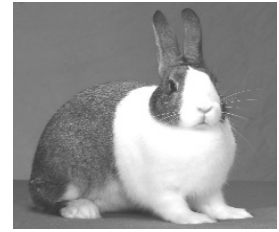
Best of Breed
Steel Buck

2004 ARBA National Convention
Providence, Rhode Island



Best of Breed
Black Buck

2006 National Dutch Show
Washington, Pennsylvania



Best of Breed & BEST IN SHOW
Gray Doe

2006 ARBA National Convention
Fort Worth, Texas



Congratulations, Kevin !!!!

Best In Show

at the 2006 ARBA National Convention

Fort Worth, Texas

SWEEPSTAKES CONTEST RESULTS

Sweepstakes Year - 1/1/2006 - 12/31/2006
Results below are through 4/30/2006

The results shown below were submitted by the
sweepstakes Chairpeson, Valerie Worzella.

If you have any questions regarding the
sweepstakes, please contact Valerie.

YOUTH OVERALL SWEEPSTAKES

Place	Exhibitor	State	#Shows	Points
1	Alexandra Reau	MI	19	7,921
2	Kevin Athey	MD	18	6,712
3	Adrienne & Mac Gerhart	OH	14	6,427
4	Suzanne Wilch	OH	16	5,976
5	Cody & Danny Lape	OH	12	5,459
6	Katie Bickelhaupt	OH	16	3,871
7	Emily Borgmann	MO	10	3,851
8	Kristy Hume	MI	13	3,800
9	Nathan Lohrey	OH	15	3,636
10	Trevor Marquis	IL	19	3,609
11	Sarah & Erin Hage	MI	13	3,180
12	Tracy Albertoni	CA	23	2,763
13	Harold L Smith III	NY	13	1,939
14	Jacob & Joseph Harden	IA	6	1,760
15	Jasmine Wright	MA	16	1,744
16	Nathan Graybeal	PA	5	1,725
17	Vanessa Brey	NY	13	1,618
18	Drew Patton	LA	8	1,444
19	Alexandra "Lulu" Riley	NY	8	1,412
20	Kimberly & Jeffery Deutsch	MO	8	1,311
21	Naomi Wisniewski	PA	7	1,301
22	Scott Sustersich	MD	8	1,299
23	Victoria Voigt	WI	8	1,299
24	Shane Hansen	WI	8	1,253
25	Steffi Woodfill	MN	9	1,231

YOUTH RABBIT OF THE YEAR

Place	Exhibitor	State	Tattoo	Points
1	Adrienne & Mac Gerhart	OH	A203	1,750
2	Alexandra Reau	MI	KG50	920
3	Alexandra Reau	MI	Z37	630
4	Bethany Brown	CT	K639	416
5	Kristy Hume	MI	SR43	366
6	Adrienne & Mac Gerhart	OH	M163	350
7	Kevin Athey	MD	SG42	349
8	Adrienne & Mac Gerhart	OH	M153	308
9	Alexandra Reau	MI	Z48	290
10	Tracy Albertoni	CA	CO13	277
11	Cody & Danny Lape	OH	CD130	274
12	Emily Borgmann	MO	K674	261
13	Alexandra "Lulu" Riley	NY	M169	248
14	Emily Borgmann	MO	BGAL	246
15	Sarah & Erin Hage	MI	AV20	246

YOUTH BLACK VARIETY

Place	Exhibitor	State	# Shows	Points
1	Alexandra Reau	MI	19	2,902
2	Adrienne & Mac Gerhart	OH	14	2,631
3	Suzanne Wilch	OH	16	2,119
4	Katie Bickelhaupt	OH	16	1,551
5	Emily Borgmann	MO	10	1,463
6	Cody & Danny Lape	OH	12	1,459
7	Kristy Hume	MI	13	1,425
8	Kevin Athey	MD	17	1,393
9	Drew Patton	LA	8	1,005
10	Vanessa Brey	NY	12	833
11	Harold L Smith III	NY	13	732
12	Bethany Brown	CT	11	726
13	Sarah & Erin Hage	MI	13	692
14	Jasmine Wright	MA	16	644
15	Steffi Woodfill	MN	9	531

YOUTH BOB CONTEST

Place	Exhibitor	State	Points
1	Adrienne & Mac Gerhart	OH	2,626
2	Alexandra Reau	MI	2,075
3	Trevor Marquis	IL	1,032
4	Emily Borgmann	MO	849
5	Cody & Danny Lape	OH	774
6	Kevin Athey	MD	763
7	Bethany Brown	CT	643
8	Kristy Hume	MI	623
9	Tracy Albertoni	CA	526
10	Katie Bickelhaupt	OH	508
11	Naomi Wisniewski	PA	499
12	Steffi Woodfill	MN	465
13	Jasmine Wright	MA	413
14	Danette Moore	PA	371
15	Lauren McDevitt	CA	355

YOUTH BLUE VARIETY

Place	Exhibitor	State	# Shows	Points
1	Emily Borgmann	MO	10	1,979
2	Suzanne Wilch	OH	16	1,855
3	Adrienne & Mac Gerhart	OH	14	1,378
4	Kristy Hume	MI	13	1,338
5	Nathan Graybeal	PA	5	1,212
6	Trevor Marquis	IL	19	1,009
7	Alexandra Reau	MI	15	827
8	Cody & Danny Lape	OH	12	755
9	Hilary Wittrock	WA	1	524
10	Tracy Albertoni	CA	23	523
11	Nathan Womack	CA	11	499
12	Brandon Moe	WI	7	419
13	Harold Smith III	NY	12	402
14	Vanessa Brey	NY	11	383
15	Victoria Voigt	WI	8	336

YOUTH CHOCOLATE VARIETY

Place	Exhibitor	State	# Shows	Points
1	Kevin Athey	MD	18	4,865
2	Cody & Danny Lape	OH	12	1,778
3	Tracy Albertoni	CA	23	1,697
4	Suzanne Wilch	OH	16	1,321
5	Rebekah D Bogan	OH	10	1,014
6	Alexandra Reau	MI	16	622
7	Michelle Meijer	MI	11	554
8	Brady Hoskins	KS	5	442
9	Kassandra & Kelvin Abrams	NY	14	361
10	Zoe Patton	LA	8	350
11	Maddy, Anna, & Molly Paul	OH	2	312
12	Jasmine Wright	MA	13	306
13	Sarah Correll	IN	7	290
14	Shane Hansen	WI	8	268
15	Kimberly & Jeffery Deutsch	MO	8	257

YOUTH STEEL VARIETY

Place	Exhibitor	State	# Shows	Points
1	Jacob & Joseph Harden	IA	6	1,041
2	Adrienne & Mac Gerhart	OH	14	873
3	Alexandra Reau	MI	19	495
4	Cory Patton	LA	8	435
5	Caitlyn Hanlon	NY	7	374
6	Cody & Danny Lape	OH	12	333
7	Victoria Voigt	WI	8	297
8	Rachel Flarey	OH	12	290
9	Trevor Marquis	IL	7	219
10	Graham Shields	OR	1	198
11	Haley Craig	IL	11	193
12	Kimberly & Jeffery Deutsch	MO	8	192
13	Megan & Alyssa Reilly	WI	19	174
14	Alexandra "Lulu" Riley	NY	6	169
15	Kevin Garrison	FL	3	149

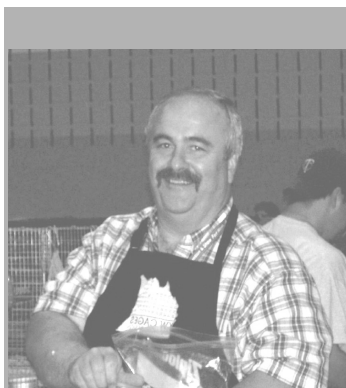
YOUTH GRAY VARIETY

Place	Exhibitor	State	# Shows	Points
1	Katie Bickelhaupt	OH	16	2,070
2	Alexandra Reau	MI	19	1,543
3	Naomi Wisniewski	PA	7	984
4	Sarah & Erin Hage	MI	13	800
5	Cody & Danny Lape	OH	12	750
6	Kristy Hume	MI	13	729
7	Alexandra "Lulu" Riley	NY	8	649
8	Cory Patton	LA	8	629
9	Suzanne Wilch	OH	14	515
10	Jasmine Wright	MA	16	505
11	Lauren Dean	MD	5	335
12	Shane Hansen	WI	8	329
13	Lauren McDevitt	CA	9	320
14	Kevin Garrison	FL	4	318
15	Vanessa Brey	NY	6	276

YOUTH TORTOISE VARIETY

Place	Exhibitor	State	# Shows	Points
1	Nathan Lohrey	OH	15	3,536
2	Sarah & Erin Hage	MI	13	1,531
3	Scott Sustersich	MD	8	1,238
4	Trevor Marquis	IL	19	1,161
5	Harold L Smith	NY	11	526
6	Alexandra Reau	MI	18	507
7	Alexandra "Lulu" Riley	NY	8	398
8	Steffi Woodfill	MN	9	390
9	Nathan Graybeal	PA	5	379
10	Zoe Patton	LA	8	329
11	Katherine Spellmire	OH	5	295
12	Adrienne & Mac Gerhart	OH	13	236
13	Kate Knieling	OR	2	229
14	Logan Sclavi	WI	1	208
15	Shane Hansen	WI	6	202

If you have any questions regarding the sweepstakes contest, contact: Valerie Worzella



OPEN OVERALL SWEEPSTAKES

Place	Exhibitor	State	#Shows	Points
1	Dennis, Barb, & Megan kline	OH	12	8,127
2	Ron & Renee Russ	PA	13	6,790
3	Kevin Hooper	OH	5	6,579
4	Dan Schwandt	WI	21	5,970
5	Michael Smith	MI	15	5,486
6	Fred & Kathy Mullinax	NC	5	4,742
7	Penn & Sue Peters	WV	15	4,732
8	Scott Williamson	CA	25	4,690
9	Jim & Frances Schettler	CA	17	4,189
10	Sarah Cleavenger	WA	14	4,059
11	Matt Gholden & Jill Pfaff	OR	14	4,012
12	Kelly & Glenda Cummings	IN	8	3,875
13	Bob Bergene	KS	9	3,812
14	Todd Uran	OH	11	3,711
15	Warren Wiltman	WI	8	3,611
16	Theresa M Kortbein	WI	21	3,606
17	Aaron L Martin	PA	12	3,365
18	Hilary Wittrock	WA	15	3,211
19	Ricky Wood	VA	11	3,198
20	Eric & Sharon Mixdorf	IA	14	3,149
21	Valerie Worzella	WI	6	2,808
22	Jean Harris	WA	13	2,778
23	Todd Biddle	PA	12	2,714
24	Gene Knieling	OR	12	2,663
25	Jeannie McDevitt	CA	15	2,599

OPEN BOB CONTEST

Place	Exhibitor	State	Points
1	Kevin Hooper	OH	2,004
2	Scott Williamson	CA	1,908
3	Sarah Cleavenger	WA	1,644
4	Steve & Sherry Patton	LA	1,319
5	Michael Smith	MI	1,300
6	Ron & Renee Russ	PA	1,193
7	Dennis, Barb, & Megan Kline	OH	1,065
8	Jim & Frances Schettler	CA	941
9	Theresa M Kortbein	WI	925
10	Gene Knieling	OR	866
11	Hilary Wittrock	WA	866
12	Jeannie McDevitt	CA	659
13	Silas & Marge Drake	TN	643
14	Aaron L Martin	PA	639
15	James Rydell	SD	638

OPEN RABBIT OF THE YEAR

Place	Exhibitor	State	Tattoo	Points
1	Kevin Hooper	OH	K657	1,677
2	Steve & Sherry Patton	LA	MSA	1,051
3	Sarah Cleavenger	WA	DDZ2	882
4	Naomi Wisniewski	PA	NJ2	580
5	Sarah Cleavenger	WA	DDI1	542
6	Scott Williamson	CA	INDY	513
7	Theresa Kortbein	WI	K125	480
8	John Imes	PA	JG28	444
9	Michael Smith	MI	EM57	442
10	Mike & Margaret Michael	MI	L2	368
11	Mike Stuewe	MN	DM83	364
12	nonmember		1MG	352
13	Jeannie McDevitt	CA	FUNSTAR	337
14	Steve Blythe & Rita Stelzer		K492	331
15	Billy Bounds	MD	LB325	330

OPEN BLACK VARIETY

Place	Exhibitor	State	# Shows	Points
1	Valerie Worzella	WI	6	2,034
2	Kevin Hooper	OH	5	1,910
3	Dennis, Barb, & Megan Kline	OH	12	1,752
4	Warren Wiltman	WI	8	1,697
5	Todd Biddle	PA	12	1,605
6	Scott Williamson	CA	25	1,567
7	Eric & Sharon Mixdorf	IA	14	1,531
8	Michael Smith	MI	14	1,501
9	Sarah Cleavenger	WA	14	1,501
10	Fred & Kathy Mullinax	NC	5	1,451
11	Ron & Renee Russ	PA	13	1,296
12	Mike Stuewe	MN	13	1,108
13	Paul, Chris, & Megan Matthys	IN	13	1,080
14	Stanley Goeglein	IN	7	1,068
15	Penn & Sue Peters	WV	14	1,031

OPEN BLUE VARIETY

Place	Exhibitor	State	# Shows	Points
1	Dennis, Barb, & Megan Kline	OH	12	1,773
2	Sarah Cleavenger	WA	14	1,736
3	Penn & Sue Peters	WV	15	1,732
4	Bob Bergene	KS	9	1,544
5	Scott Williamson	CA	25	1,493
6	Hilary Wittrock	WA	15	1,427
7	Gary Clark	MO	9	1,304
8	Jeannie McDevitt	CA	15	1,291
9	Megan Gottschalk	MI	13	1,125
10	Warren Wiltman	WI	8	1,099
11	Jean Harris	WA	13	1,041
12	Michael Smith	MI	15	1,036
13	Matt Gholden & Jill Pfaff	OR	14	946
14	Jim & Frances Schettler	CA	17	801
15	Gene Knieling	OR	12	790



12/06

Clover Lane Dutch

"Steel & Gray" since 1946

John C. (Jay) Imes ARBA Registrar ABA Judge

19402
Green Mtn. St.
Meadville, PA 16335 (814)337-5395



OPEN CHOCOLATE VARIETY

Place	Exhibitor	State	# Shows	Points
1	Shelly Thompson	OH	21	1,993
2	Penn & Sue Peters	WV	15	1,691
3	Dennis, Barb, & Megan Kline	OH	12	1,293
4	Wilbur Williamson	IN	6	1,127
5	Ron & Renee Russ	PA	13	1,120
6	Michael Smith	MI	15	1,103
7	Aaron L Martin	PA	12	1,074
8	Bob Bergene	KS	9	1,003
9	Kevin Hooper	OH	5	997
10	Stuart & Becky Canfield	OH	3	904
11	Todd Biddle	PA	11	824
12	Ricky Wood	VA	10	754
13	Henry & Donna Carpenter	MI	14	752
14	Jim & Frances Schettler	CA	17	636
15	Pete Nelsen	WA	9	535

OPEN STEEL VARIETY

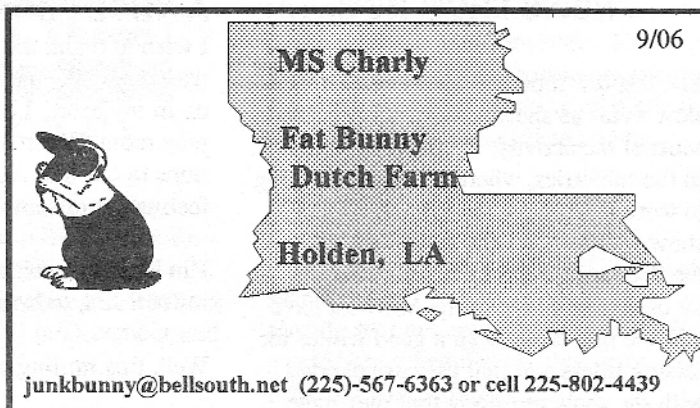
Place	Exhibitor	State	# Shows	Points
1	Ron & Renee Russ	PA	13	1,770
2	Fred & Kathy Mullinax	NC	5	944
3	Theresa M Kortbein	WI	15	790
4	Steve & Sherry Patton	LA	8	714
5	Kevin Hooper	OH	5	699
6	Fred & Helen Schmall	CA	17	376
7	Alan Miller	IN	10	339
8	Cody & Dany Lape	OH	1	338
9	Silas & Marge Drake	TN	28	301
10	Susan & Carolyn Jock	IN	13	294
11	Shelly Thompson	OH	15	294
12	Paul, Chris, & Megan Matthys	IN	9	284
13	Anthony Campbell	AZ	14	278
14	Thomas Smith	IA	7	262
15	Janet Bowers	MI	5	261

OPEN GRAY VARIETY

Place	Exhibitor	State	# Shows	Points
1	Kelly & Glenda Cummings	IN	8	3,279
2	Dennis, Barb, & Megan Kline	OH	12	2,772
3	Billy Bounds	MD	7	2,075
4	Ron & Renee Russ	PA	13	1,738
5	Theresa M Kortbein	WI	21	1,308
6	Matt Gholden & Jill Pfaff	OR	14	1,234
7	Randy Ryland	LA	8	1,207
8	Stanley Goeglein	IN	8	1,199
9	Michael Smith	MI	15	1,009
10	Lynn Hebert	LA	8	971
11	Hilary Wittrock	WA	13	970
12	Aaron L Martin	PA	12	777
13	Jim & Frances Schettler	CA	17	777
14	Ricky Wood	VA	11	760
15	Fred & Kathy Mullinax	NC	5	752

OPEN TORTOISE VARIETY

Place	Exhibitor	State	# Shows	Points
1	Dan Schwandt	WI	21	4,959
2	Todd Uran	OH	11	2,559
3	Marvin Cummings	FL	14	916
4	Kevin Hooper	OH	5	864
5	Dale Grabenbauer	FL	10	819
6	Matt Gholden & Jill Pfaff	OR	13	784
7	Tiffany & Vicki Dills	WA	11	664
8	Ricky Wood	VA	11	659
9	Lynn Hebert	LA	8	630
10	Jim & Frances Schettler	CA	17	615
11	Herbert Six	MI	12	607
12	Jean Harris	WA	13	596
13	Fred & Kathy Mullinax	NC	5	530
14	Herb Kelso	SC	5	480
15	A Newman & D Papakee	IA	11	400



9/06

MS Charly

Fat Bunny Dutch Farm

Holden, LA

junkbunny@bellsouth.net (225)-567-6363 or cell 225-802-4439



<p><i>Bunny Brigade Dutch</i> Scoot their Boots to Texas!</p> <p>Had a great time. Congratulations to all the Winners!</p>	<p>Congratulations Kevin!</p> <p>You Can't Beat the Dutch 2006</p> <p><i>God Bless, Steve, Sherry, Cory, Drew, Zoe & Levi Patton</i></p>
<p>Congratulations to all the Winners... Great Show!</p> <p><i>Eric & Sharon Mixdorf Hawkeye Dutch Rabbitry</i> Denver, IA</p> <p>Best Black 1st place Black Jr. Doe Best Opposite Tort 1st place Tort Sr. Buck</p>	<p>Congratulations Cory Patton! Youth BOV & BOSV Steel And Steel Display</p> <p>Congratulations Drew Patton! Best Black Sr. Doe & Best Blue Sr. Doe Plus Youth Seller's Class</p> <p><i>Love, Mom & Dad</i></p>
<p>Thank for all the great raffle donations!</p> <p><i>American Dutch Rabbit Club</i></p>	<p>Congrats to all the winners!</p> <p>Thanks for a great time in Texas!</p> <p>See you in Michigan!</p> <p><i>The Patton Family Steve, Sherry, Cory, Drew, Zoe & Levi</i></p>
<p>Thanks to everyone for a great show!</p> <p><i>Warren Wiltman</i></p>	<p>Congratulations Kevin</p> <p>Best In Show!</p> <p><i>From the McCurry Family</i></p>
<p>Enjoyed judging the youth Dutch this year... There were some dandy animals!</p> <p>Thanks for the opportunity!</p> <p><i>Eric Mixdorf Denver, Iowa</i></p>	<p>Congratulations to all the Texan winners!</p> <p>Enjoyed the Show!</p> <p><i>Sue Hill Verona, WI</i></p>

<p>Congratulations to All the Winners!</p> <p><i>Melody Stremkowski</i> & <i>John Milroy</i></p>	<p>Congratulations Kevin on Best In Show!</p> <p><i>Tiffany Wayne</i></p>
<p>Thanks for everyone's help in putting on a great show!</p> <p>Best Open Dutch – Gray Jr. Doe</p> <p>Best Opp. Dutch – Black Jr. Buck</p> <p>Best Sr. All Colors – Black Sr. Buck</p> <p>Best and Best Opposite Steel</p> <p><i>Kevin Hooper, Ohio</i></p>	
<p>Congratulations To All!</p> <p><i>Steve Blythe/Rita Stelzer</i></p>	<p>Congratulations Kevin – And all the winners at Texas!</p> <p><i>Michigan Dutch Rabbit Club</i></p>
<p>Best wishes to all new Breeders who bought rabbits From TX, LA, NM & AR</p> <p><i>Bergene Rabbitry</i></p>	<p>Congratulations Kevin!</p> <p>See you in Michigan!</p> <p><i>Dr. Chris Hayhow</i></p>

<p>Way to Go Kevin!</p> <p>We had a good convention too!</p> <p>Motel was lacking.</p> <p><i>Hawkeye Dutch Rabbitry Eric and Sharon Mixdorf</i></p>	<p>Had a great time in Texas!</p> <p><i>Jill & Angie Aisbet Chris Schneider</i></p>
<p><i>Kortbein's Dutch</i> Theresa Kortbein Waterford, WI 920-973-1142 tmkortbein@yahoo.com www.freewebs.com/showdutch/ ARBA Registrar</p>	<p><i>Dan Schwandt</i> 5924 NW Hwy 83 Waterford WI 53185 262-534-2045</p>
<p><i>Emily's Dutch Den</i> Black, Blue, Gray, Tortoise With Pedigrees Medford, Oregon</p> <p>Number: 541-778-3228 E-Mail: dutchgirl@charter.net</p>	<p><i>Jill's Wild Dutch Bunch</i> Dutch Rabbits Pedigreed-Registered Black-Blue-Tortoise-Gray Developing Gold & Harlequin Varieties Jill E. Pfaff (541) 753-0128 – Jilswlddut@ccountry.net Corvallis, OR 97330 Since 1975</p>
<p>Congratulations Kevin and all the winners!</p> <p>Wish we could have been there!</p> <p>See you all in Michigan!</p> <p><i>Megan's Dutch Hutch Dennis, Barb and Megan Kline</i></p>	

<p>Loma Vista Rabbitry</p> <p>Who's Lucky Rabbitry</p> <p>DUTCH RABBIT Lilacs, Dutch & Silver Martens</p> <p><i>Diana Utter O'Haver</i> 817-771-2268 BunnyD055 @ aol.com</p> <p><i>WH "Bill" O'Haver</i> 915-261-8504 Marietta, OK 73448</p>	<p>Todd Uran 881 West 11th Ave Columbus, OH 43212 urantodd@aim.com</p> <p>Breeder of Black, Blue, Tort & Gray Dutch</p>
<p>Congrats Kevin On Best In Show!</p> <p><i>Phil, Sara, Cody & Dan Lape</i></p>	<p>Congratulations To all the Winners!</p> <p><i>Steve, Sandy & Suzanne Wilch</i></p>
<p><i>Lohrey's Dutch</i> Specializing in Black & Tortoise</p> <p>Jeff, Stephanie, Nate and Sam 1695 Bell Rd. Hamilton, OH 45013 513-738-4436 lohreyjs@netscape.net www.lohreysdutch.com</p>	

THANK YOU!
2006 ARBA Convention Award Sponsors



<p>Bob Bergene Dale Bernhardt Kim & Jeffrey Deutsch Reece Farness Jean Harris Sue Hill & Emily Strandwitz Kevin Hooper Brian, Annette & Brady Hoskins Kristy Hume</p>	<p>Theresa Kortbein Susan Loan Pat Mareska Mark, Sheryl, Greg, David & Michele Moll Trevor Marquis John Milroy Wm. O'Haver James Rydell Jim & Fran Schettler Dan Schwandt</p>	<p>Dan & Dawn Schwartz Herb Six John Stenson Melody Stremkowski Mark Stewardson Upper MidWest Dutch Rabbit Club Jeff Weierheuser Dorothy Wilke Lisa & Hilary Wittrock Ricky Wood</p>
---	---	--



OHIO STATE DUTCH RABBIT CLUB

- * Spring Double Show: May 26, 2007 - Tiffin, OH
~ Mark Stewardson - Judge
~ Terry Fender - Judge
 - * Fall Show: November 24, 2007 - Wilmington, OH
~ Glen Carr - Open Judge
~ Brad Boyce - Youth Judge
- (Club web site: OSDRC.tripod.com)

OFFICERS:

President: Kevin Hooper
 Vice President: Dennis Kline
 Secretary/Treasurer: Barb Kline
 Director/Editor: Shelly Thompson
 Director: Allan Gerhart
 Director: Todd Uran
 Director: Phil Lape
 Youth Representative: Suzanne Wilch
 Sweepstakes: Steve Wilch

For more information

contact:
 Barb Kline
 4664 S. Co. Rd. 591
 New Riegel, OH 44875-9738
 klinedutch@aol.com

12/06

Michigan Dutch RC



**If It Ain't Dutch,
It Ain't Much !!**

For more
 Information
 Contact:
 Carlene Bell, Sec
 4786 Allen
 Webberville, MI
 48892
 bell@ia4u.net

Open & Youth Sweepstakes
 Spring & Fall Specialty shows

President: Janet Bowers
 V President: Tom Dietrich
 Sec/Treas: Carlene Bell

12/06

Kansas Dutch Rabbit Club



2006 Officers

President - Nancy Kennedy
 V President - Daryl Gardner
 Treasurer - Jack Colborn
 Secretary - Shelly McCray

Dues - \$ 5 per person/\$8 per family
 Show - Dutch Only Picnic Show
 June 3, 2006- Wichita, Kansas

For more information please contact:

Nancy Kenndy, Secretary
 2484 151st Rd
 Atlanta, KS 67008
 nancyk@kennedyrabbitry.com



12/06

Sycamore Rabbitry

Black, Blue and Gray Dutch

Kristy Hume
 1396 W Kinsel
 Charlotte, MI 48813
 (517)543-3358
 odie@cablespeed.com



Check out our website!

9/07

www.sycamorerabbitry.com

Drew's Fur Babies

Home to Dutch Rabbits

Black, Blue, Chocolate, Gray, Steel, Tort

Patton Family

Steve, Sherry, Cory, Drew, Zoe & Levi

Phone:(318)309-2335 Blanchard-Morringsport, LA
 slp4rabbits@yahoo.com
 www.drewsfurbabies.angelcities.com

9/06

Michigan Dutch Rabbit Club

Proudly Presents

National Dutch Show



April 27th - 29th

**Kalamazoo County Fairgrounds
2900 Lake Street
Kalamazoo, MI 49048**

Hotels

Headquarters Hotel

Clarion Hotel

3600 Cork Street
Kalamazoo, MI 49048
269-385-3922
\$69.95 + Tax

Hotel Amenities:

In room refrigerator & microwave
Indoor pool, Game Room, Sauna, Whirlpool,
Restaurant/Lounge & Food Court
For Discounted Rate - tell them you are with the
Michigan Dutch Rabbit Club

Rooms must be reserved by: 3/13/07

Additional Hotels

Days Inn: 269-381-7070
Holiday Inn Express: 269-373-0770
Best Western: 269-381-1900

Contact Information

- ☐ **General Chairperson: Janet Bowers**
269-749-9667 eweb502@netzero.net
- ☐ **Show Secretary: Carlene Bell**
517-521-4441 cbell@ia4u.net
- ☐ **Youth Contests: Brenda Reau**
734-279-1845 rsuffolk@cass.net
- ☐ **Advertising: Carlene Bell**
- ☐ **Banquet: Julie Hume**
517-543-3358 odie@cablespeed.com
- ☐ **Fun Classes: Megan Gottschalk**
989-644-3569 otterpopmg@yahoo.com

***If It Ain't DUTCH...
It Ain't Much!!***

For Further Information: www.michigandutchrabbitclub.com

Ask the Judge/Breeder

by Julie Hume

If you have a question you wish to pose for either the "Ask the Judge" or "Ask the Breeder" columns, just e-mail or mail your question to me. These columns are an avenue where you can ask questions and advise from the professionals in our organization. For the judge's column, you may ask questions such as judging criteria, presentation on the show table, what it takes to become a judge, and proper etiquette as a few examples. For the breeder's column, questions can range from feeding, conditioning, breeding techniques, rabbit care, how to improve your herd, anything that people who have been breeding Dutch rabbits for many years might have suggestions on. If you would like to participate on the panels, just drop me an e-mail and I will add your name to our groups. The questions will be e-mailed and each participant has the option to answer or not. This is the chance to get a lot of viewpoints from across the country!

E-mail your questions to: odie@cablespeed.com

Mailing address is: Julie Hume,
1396 W Kinsel Highway
Charlotte, Mi 48813

Ph: 517-543-3358

ASK THE JUDGE

If a junior matures early, is it better to move it up to the senior class? Do you fault a rabbit in a junior class if it looks like a senior?

Do you fault a rabbit in a junior class if it looks like a senior?

From Ray Brewer:

I can see no legitimate reason to bump a junior up in class. Most of us know that our Dutch hit their show prime (bloom) at 5 to 6 months. As there is no max weight limit on juniors (other than the max wt. for any class of 5 ½ lbs.) why not just show the rabbit in class based on age? OK, OK, sometimes an exhibitor owning a junior who has won several legs may bump it up to get that sometimes elusive senior leg before the bunny starts to slip. I don't guess I have a serious problem with that practice.

Oh boy! This one is a real "can of worms" and a sore spot with me! There are lots of stories out there about those "toy" Dutch who never reach senior weight and yet get shown as juniors year after year. Our standard allows a judge to deem any animal obviously a senior and being shown in a junior class "unworthy of award". I've sent off a few that I thought were seniors and put even more down at the bottom of the class.

From Kevin Hooper:

The answer to this question depends a lot upon the breed. Since we are talking Dutch here, there are a couple of ways to look at this.

First, maturity does not necessarily mean size. Many times a junior may have the size to be shown as a senior, but if it has not matured, it will not do as well. A

young senior will have started to thicken up a bit, usually more than a large junior who is five months old or so. The head will be more developed - USUALLY - and the mature rabbit will have a better feel than the large junior will.

On the other hand, it is not uncommon to see a mature junior who has not yet hit the size or age for the senior class. Those juniors who show the traits of seniors usually do quite well on the table.

If I see a large, mature looking animal in the junior class, it is placed accordingly based on the competition, with the comment being made that they should bump it up to senior, based on its' development. I have faulted a few for being too large in the class, but that is rare, especially now that most breeds have maximum junior weights (not the Dutch).

Now sometimes, that junior you bump up will do well against good competition to a certain point. They will be sleeker in coat, and usually have better color than some of the veteran seniors. If they have the maturity along with the sleek coat and color, then they will do quite well.

From Jan Coffelt:

I feel an animal should be placed in the class in which it will best compete. I have never faulted an animal for being too young or too old looking for the class it is placed in.

I tend to have a group of rabbits in my own herd that sometimes just make senior weight being just close to four pounds. It has annoyed me that judges will make remarks that the animal looked like a junior, or faulting it for not being a good sized Dutch. As far as I am concerned, as long as the animal is within the limits of the weight requirements for the class, it is not a concern. I proceed to judge on the merits of the animal in type, markings, fur, and color.

ASK THE BREEDER

What do you know about pimples on rabbits and what do you do to treat them? (For those who are unfamiliar with this problem, it is a pimple that appears on the genitals, mainly bucks, and will disqualify the animal from that class.)

From Fran Schettler:

By pimples on rabbits, I assume that you mean pimples in the sheath area, primarily on bucks, but sometimes on does too. Usually just popping the pimple and emptying it thoroughly works. Be aware though that this may cause a raw sore that could get the animal disqualified by the judge so try not to do it right before the show unless you have to. Also be aware that the animal is not going to appreciate your efforts and will undoubtedly put up a fuss about the process, especially if you have a pimple that does not want to be popped. You can follow this treatment with some sort of antiseptic too. I usually use my fingernail to pop the pimple, but some people use a needle.

In a more chronic or infectious situation, a shot or two of penicillin i.m. (intra muscular) seems to help. I think that sometimes the pimple is from a dirty cage or the heat of summer, but sometimes I can't figure out why they get it. Other times it may be a sign of an infection. This infection does seem to be transmittable to others during the breeding or kindling process and it may be some sort of syphilis. I can remember asking Doc Reed about it once years ago and that's what he said it might be. Usually though syphilis would also present with more symptoms such as general redness, swelling and soreness in the genital area.

I had an instance a few years back where all of my chocolates, even the unbred juniors, had to be treated with penicillin in order to combat the widespread problem. I believe the does caught it from a single buck, and then the general breeding and kindling process continued to spread it until all had it. A course of two shots a few days apart solved the problem.

Another thought worth mentioning; I have one buck now that seemed to have a chronic pimple problem. Nothing worked, including the shot. I have now replaced my penicillin with a fresh bottle, administered another shot, and it is working. So be aware of the efficacy of your medicines, even though the expiration date may not have come yet.

From Kevin Hooper:

This was a big problem I ran into in the early nineties. I had some lab work done on this by Doc Reed. Without going into the details, there is little that can be done. The bacteria were resistant to antibiotics. *Genticin (may not be spelled correctly) was the only drug which would have any

affect on it, and if you were to do an injection which would be the best way to treat them, you could count on loosing 20% due to the digestive reaction to the drug.

I did find a Gentamicin ophthalmic ointment which was somewhat effective. The best way to handle this is to cull for those who seem to have the tendency of getting pimples.

My whole herd had them after I brought in one buck. They did not have to have any contact with the buck; it just spread to all. I culled the most severe until it was no longer an issue. I still have rabbits get them, but not frequently.

**Note from Julie: searching the Internet, Gentacin seems connected to Gentamicin and was the only reference for the ophthalmic ointment.*

From Jill Pfaff:

I'm assuming you are referring to vent abscesses. These appear most commonly in bucks (I think because they are always spraying urine and get grimy) on the sheath of the penis but I have also seen them on the female vent area. I think we call them pimples because they are similar to the facial pimples we have all dealt with as teenagers. A skin pore gets dirt or debris in it and the bodies reaction is to send white blood cells to attack the foreign object or seal it off from spreading to the rest of the body which become pus. As for treatment I usually try to squeeze out all the pus till there is just a pinkish fluid and then liberally dab on mouthwash with a cotton ball for a couple of days. I use mouthwash because it is an affective antiseptic yet mild enough not to damage the tissues in the area. The cells in the mouth and vent area are similar. I don't believe using alcohol or peroxide is any more affective and a lot more painful. To squeeze out the pus may take two people so one person can hold the animal on its hindquarters and the other person will have both hands free to do the squeezing though I've done the procedure by myself. Expressing the pus takes a bit of patience because it is usually thick like toothpaste. The area will get a bit red and also be tender. Sometimes the procedure may need to be repeated for a few days to get it all cleaned out. All wounds/sores etc need to heal from the inside out or can become a cyst, which may need to be surgically removed.

From Bob Bergene:

When I tip over the rabbit and see a small white pimple or pimples, I feel that it is an inflammation or minor infection caused by bacteria on the cage floor or even on the skin in the genital area. To treat it, I will rub the area with rubbing alcohol and then proceed to pop the pimple. After that is done, I apply a "mastitis treatment". What this is, is penicillin in oil

suspension in a tube. I apply it to the infected area, so as to heal, and prevent further infection. This penicillin in a tube which just squirts on to apply is difficult to get in Kansas where I live, but am able to get it in Wisconsin at almost any farm store. It is used widely by the dairy industry up there. You can also apply Vaseline or Dr. Watkins salve, (also great for healing sore hocks in other rabbit breeds). Vaseline and Dr. Watkins salve are good to use if the soreness has progressed and is red due to cage infection and urine caking.

My neighbor, who is a DVM and is very experienced with treatment and diseases of rabbits, feels the pimple is an "inflammation of the hair shaft" in the genital area. This can be caused by bacterial infection.

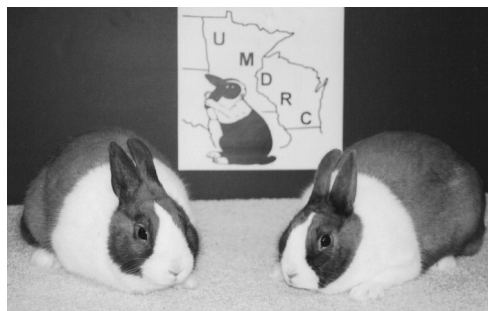
First of all, I hope that you do not have this condition in your rabbits, but as it is fairly common, if you do, maybe the above steps will help.



**DUTCH
HEADQUARTERS
HOTEL**

**2007 ARBA Convention
Grand Rapids, Mi.
Days Inn Downtown
310 Pearl Street NW
Grand Rapids, 49504
Reservations: 616-235-7611
One block from DeVos Place
\$89.00/night 1-4 persons
Free Parking, Queen 2-Bd
Rooms, Airport Shuttle,
Free Internet, Gym,
Fitness Center, Pool,
Sully's Steakhouse and
Sports Bar located at the
Hotel.
Reservations Must Be Made
by June 1st, 2007**

QUALITY DUTCH IN ALL COLORS



Dan Schwandt & Theresa Kortbein

5924 NW Hwy 83

Waterford, WI 53185

(262)534-2045

(920)973-1142

drschwandt@yahoo.com

tmkortbein@yahoo.com

BOV Tortoise '05 NDS

Best Overall Sr. '04 NDS

BOSV Tortoise '05 NDS

Best Steel Fur '04 - '06 NDS

BOV Tortoise '05 ARBA Conv.

BOSV Steel '05 NDS

BOSV Tortoise '05 ARBA Conv.

Best Steel Jr. '05 NDS

BOSV Chocolate '05 ARBA Conv.

BOSV Gray '05 ARBA Conv.

BOV Tortoise '06 NDS

BOSV Gray '06 NDS

#1 Tortoise Sweepstakes '05

BOSV Blue '06 NDS

09/07

**AMERICAN DUTCH RABBIT CLUB
YOUTH SCHOLARSHIP FOUNDATION
4664 S. Co. Rd. 591
New Riegel, OH 44853
PROCEDURES FOR YOUTH SCHOLARSHIP APPLICANTS**

1. All applications must be submitted on forms obtained from Scholarship Committee member. Computer forms will not be accepted unless in original format.
2. Applicant must have held continuous ADRC membership for at least three (3) years preceding application for scholarship.
3. Applicants are eligible to apply only if they are a high school graduate under the age of 21 and currently have 12 credit hours of college education.
4. Applicants must have completed high school with a minimum cumulative GPA of 3.00 (unweighted) on a grade scale of 4.00, and have been in the top 50% of graduating class.
5. Home schooled applicants are eligible, but must submit SAT or ACT scores, and a letter of recommendation from a person outside the immediate family.
6. All applications must include a complete High School and College transcript.
7. Scholarship proceeds may be used to further education at any accredited four (4) year college, two (2) year college, vocational, or technical school.
8. Scholarships will be paid to the member and school upon receipt of confirmation of college enrollment.
9. All applications must be postmarked by March 15th of application year and returned to the ADRC Youth Scholarship Foundation.
10. Applicant is only eligible to win scholarship one time.



WELCOME NEW MEMBERS

Rachel Hecker, AK
 Kelsey Hecker, AK
 David Hecker, AK
 Douglas & Cheryl Plumley, AL
 Mystina Swaim, AR
 Stacey Curl, CA
 Courtney Fund, CA
 Katie Hill, CA
 Emily Johnson, CA
 Kevin Poe, CA
 Hannah Williamson, CA
 Jordan Yee, CA
 Mary Franklin, DE
 Rachel Rosenberg, FL
 Alan & Jill Stemmler, IL
 Lydia Stemmler, IL
 Natalie Stemmler, IL
 Ashlyn Archer, IN
 Lauryl Knoila, IN
 Ryan & Rosalie McBride, IN
 Jamie McBride, IN
 Nolan McBride, IN
 Alexander McBride, IN
 Allison Krick, KS

Steve & Kathy Lawrence, KS
 Joe Robinson, KY
 Corey Deshotel, LA
 Codey Deshotel, LA
 Casey Deshotel, LA
 David "Jerry" Guillory, LA
 Karen King, LA
 Jason Green, MD
 Emily Stencil, MD
 Edward Kwaske, MI
 Donald Rosinski, MI
 Charles Sayles, MI
 Sarah Clauson, MN
 Dorothy Pascher, MO
 John F. Hopper Jr., NC
 Robert Richardson, NC
 Aleece Calarco & Brad Wagner, NE
 Alenna Calarco, NE
 Jordan Wagner, NE
 Caitlyn Brantner, NJ
 Sam & Diane Freeman, NM
 Jim & Carolyn Hidalgo, NM
 Brandon Hidalgo, NM
 Ryan McClish, NM
 Alex McClish, NM
 Rick & Sherry Evans, OH
 Quinn Evans, OH
 Peyton Evans, OH

Rachel Fox, OH
 Edna Lambert, OH
 Ron & Lisa McGinnis, OH
 Adam McGinnis, OH
 Megan McGinnis, OH
 Cathy Rennie, OH
 D'Andra Ellis, OK
 Amy Straight, OK
 Sandee Straight, OK
 Danielle Barbacow, PA
 Michael Dew, Jr., PA
 Eugene Ditzler, PA
 Michele Gannon, PA
 Boyd Gannon, Sr., PA
 Ronald Mashburn, TN
 Kimberly Patrick, TX
 Marcia Bisbee, WI
 Erica Haglund, WI
 Paul & Kristine Leverich, WI
 Katherine Leverich, WI
 Christopher & Amy Olson, WI
 Shelby Olson, WI
 J.C. Olson, WI
 Mary Scharinger, WI



Denny's Dutch
 Dennis K. McAtee, Sr.
 9933 32nd Street
 Oxford Jct., Iowa 52323
 Ph. 319-484-2377

3/07

BERGENE RABBITRY

QUALITY DUTCH



30165 West 154th Street
 Gardner, KS 66030

(913) 856-7311
 bergene@planetkc.com

Also:
 Palominos
 Holland Lops
 Standard Chinchillas

12/06 www.bergenerabbitry.com



End Bunny Boredom with 8-in-1 Rabbit Toys & Treats

- **Yogies Treats** are made with delicious, melt-in-your-mouth real yogurt.

- **Snak Shak Activity Logs** are 3-in-1 fun.

- They're a chew, treat, and natural hideaway that's 100% edible and made with fresh alfalfa and golden honey.

- **Wacky Wabbit! Treats** are fun combinations of alfalfa, carrot, wood chews and more.

Check out all the great diets, treats, and rabbit care products from the trusted 8-in-1 brand.

8-in-1 Pet Products

www.8in1pet.com



Carefresh Colors Bedding

Fun colors that kids love!

Super absorbency provides superior odor control.

Made of natural, biodegradable wood pulp filter.

Sanitized to kill fungus, mold, and bacteria.

Completely safe.

The ideal pet bedding and litter for

- small animals
- reptiles
- baby birds

Absorption Corporation

www.absorbent.com



Special Wins



Open Best In Show		
5/20/2006 - Kern Co RBA	Bakersfield, CA	Scott Williamson - Black SB - BDY
6/3/2006 - Oregon League of RCB	Newport, OR	Matt Gholden & Jill Pfaff - Blue SD - JB5LK
6/3/2006 - Brookings RC	Brookings, SD	Steve Blythe & Rita Stelzer - Blue JD - K490
6/4/2006 - Oregon League of RCB	Newport, OR	Matt Gholden & Jill Pfaff - Black JB - P608
6/24/2006 - Golden West RBA	Pomona, CA	Scott Williamson - Black JD - LIZ
Youth Best In Show		
5/14/2006 - Southwest Wisconsin RC	Dodgeville, WI	Shane Hansen - Black SD K134
5/27/2006 - We Be RC	Hutchinson, MN	Steffi Woodfill - Black JD - DM10
6/3/2006 - ??	Deland, FL	Kevin Garrison - Blue SD - KB53
Open Best Reserve & Best 4 Class		
5/6/2006 - Are We There Yet R&C Club	Fairbault, MN	Thomas Smith - Black SD - 35S
5/6/2006 - Three Corners RC	Hutchinson, KS	Pat Willis - Black SB - 432
5/7/2006 - California R&CS	Pomona, CA	Scott Williamson - Black SD - MEG
5/13/2006 - Saginaw Valley R&CBA	Corunna, MI	Michael Smith - Black SB - EM57
5/27/2006 - We Be RC	Hutchinson, MN	Steve blythe & Rita Stelzer - Gray JD - K492
6/25/2006 - Washington State RBA	Kennewick, WA	Sarah Cleavenger - Black JD - DDZ2
Youth Best Reserve & Best 4 Class		
6/4/2006 - Connecticut RBA	North Haven, CT	Lauren & Sean Kinane - Gray SD - K30
6/4/2006 - Iroquois RBA	Crescent City, IL	Trevor Marquis - Tortoise SB - M84
6/24/2006 - Golden West RBA	Pomona, CA	Tracy Albertoni - Black JB - ROMEO

Compliments of
**Gene & Kate
Knieling**

Silverton, Oregon

Blacks, Blue,
Gray, Steel and Tort



12/06



It was a long convention. I need a rest!

Advertise in the
Dutch Reporter.

Let other Dutch breeders
know what you have for sale
or what you might be
looking to acquire.


The ads can be for
buyers just as well as
they can be for sellers!

Moll'sRabbitry

Dutch

Black, Blue, Chocolate,
Steel, Tortoise

**Greg Moll
David C. Moll**



4047 Mohawk Trail
Adrian, MI 49221
(517) 265-8587

12/07

Open Show Reports

Date 5-6-2006
 Show BVRA A
 Where STOCKTON, CA
 Judge STACY, RAY
 Dutch 28
 BOB Black SB Scott Williamson
 BOS Blue SD Jeannie McDevitt
 Black 8 SB Scott Williamson
 Blue 13 JB Scott Williamson
 Gray
 Choc 5 JD Scott Williamson
 Steel 1 SB Jill/Troy Giron/Ihrke
 Tort 1 JD Scott Williamson

Date 5-6-2006
 Show NWRB A
 Where MONROE, WA
 Judge HASSENPLUG, ROGER
 Dutch 65
 BOB Gray SB Pete Nelsen
 BOS Blue JD Jean Harris
 Black 21 JB Sarah Cleavenger
 Blue 18 JB Sarah Cleavenger
 Gray 7 SB Pete Nelsen
 Choc 7 JB Pete Nelsen
 Steel 3 JB Hilary Wittrock
 Tort 9 SD Jean Harris

Date 5-6-2006
 Show SSRBA A
 Where SARASOTA, FL
 Judge ???
 Dutch 39
 BOB Black JD Tim Smith
 BOS Chocolate JB Tim Smith
 Black 15 JD Tim Smith
 Blue 3 JD Kennard E Henley
 Gray 4 SD William C Henley, III
 Choc 9 JD nonmember
 Steel 4 SD Marvin Cummings
 Tort

Date 5-7-2006
 Show OSRBA
 Where COLUMBUS, OH
 Judge ORMSBY, BRUCE
 Dutch 63
 BOB Black SB Kevin Hooper
 BOS Black SD Kevin Hooper
 Black 16 SB Kevin Hooper
 Blue 7 JB Dennis, Barb. & Megan Kline
 Gray 10 SD Dennis, Barb. & Megan Kline
 Choc 10 SD Dennis, Barb. & Megan Kline
 Steel 6 SB Kevin Hooper
 Tort 14 JD Todd Uran

Date 5-6-2006
 Show BVRA B
 Where STOCKTON, CA
 Judge MAGEE, MELISSA
 Dutch 28
 BOB Blue SD Jeannie McDevitt
 BOS Black SB Scott Williamson
 Black 8 SD Scott Williamson
 Blue 13 SD Jeannie McDevitt
 Gray
 Choc 5 JD Scott Williamson
 Steel 1 SB Jill/Troy Giron/Ihrke
 Tort 1 JD Scott Williamson

Date 5-6-2006
 Show NWRB B
 Where MONROE, WA
 Judge PALMBLAD, LAVERN
 Dutch 66
 BOB Black SD Lloyd D Greag
 BOS Chocolate JB Pete Nelsen
 Black 22 SD Lloyd D Greag
 Blue 19 SB Sarah Cleavenger
 Gray 7 SB Pete Nelsen
 Choc 7 JB Pete Nelsen
 Steel 3 SB Lloyd D Greag
 Tort 8 SB Arnold W Ferguson

Date 5-6-2006
 Show SSRBA B
 Where SARASOTA, FL
 Judge ???
 Dutch 45
 BOB Chocolate JD nonmember
 BOS Chocolate SB Kevin Garrison
 Black 13 JD Tim Smith
 Blue 4 JD Kennard E Henley
 Gray 7 JD Kevin Garrison
 Choc 10 JD nonmember
 Steel 7 JB Nikki Rutledge
 Tort 4 SD Marvin Cummings

Date 5-7-2006
 Show ECRBA A
 Where TOPSFIELD, MA
 Judge PLATT, ALAN
 Dutch 30
 BOB Black SD Sharon Sartori
 BOS Chocolate JB Pam Dunning
 Black 6 SD Sharon Sartori
 Blue 5 SB nonmember
 Gray 5 JD Lynne S Mandile
 Choc 3 JB Pam Dunning
 Steel 5 JD Lynne S Mandile
 Tort 6 SD nonmember

Date 5-6-2006
 Show OSRC SPEC A
 Where COLUMBUS, OH
 Judge VEZINO, HEATHER
 Dutch 57
 BOB Black SB Todd Uran
 BOS Chocolate SD Shelly Thompson
 Black 13 SB Todd Uran
 Blue 6 SB nonmember
 Gray 9 SB Janice Wise
 Choc 11 JB Henry & Donna Carpenter
 Steel 4 JB Shelly Thompson
 Tort 14 JD Todd Uran

Date 5-6-2006
 Show SCRBA
 Where HUTCHINSON, KS
 Judge KROENKE, DAVID M
 Dutch 22
 BOB Blue SD Jack Colborn
 BOS Gray SB Bob Bergene
 Black 7 JD Pat Willis
 Blue 8 SD Jack Colborn
 Gray 1 SB Bob Bergene
 Choc 2 SB Bob Bergene
 Steel 2 JB nonmember
 Tort 2 JB Bob Bergene

Date 5-6-2006
 Show TCRC
 Where HUTCHINSON, KS
 Judge MICHAUD, G.D.'GARY'
 Dutch 18
 BOB Black SB Pat Willis
 BOS Black JD Pat Willis
 Black 6 SB Pat Willis
 Blue 7 JB Pat Willis
 Gray 1 SB Bob Bergene
 Choc 2 JB Bob Bergene
 Steel
 Tort 2 JB Bob Bergene

Date 5-7-2006
 Show ECRBA B
 Where TOPSFIELD, MA
 Judge WAGGONER, RANDY L
 Dutch 31
 BOB Tortoise SD nonmember
 BOS Chocolate JB Pam Dunning
 Black 6 SD Sharon Sartori
 Blue 5 SB nonmember
 Gray 5 SD Anthony Mandile
 Choc 4 JB Pam Dunning
 Steel 5 SB Lynne S Mandile
 Tort 6 SD nonmember

Date 5-6-2006
 Show OSRB SPEC B
 Where COLUMBUS, OH
 Judge RIDDLE, RONALD
 Dutch 81
 BOB Gray SD Dennis, Barb. & Megan Kline
 BOS Tortoise JB Todd Uran
 Black 18 JB Janice Wise
 Blue 11 JD Dennis, Barb. & Megan Kline
 Gray 18 SD Dennis, Barb. & Megan Kline
 Choc 14 SD Shelly Thompson
 Steel 5 JB Shelly Thompson
 Tort 15 JB Todd Uran

Date 5-6-2006
 Show AWTYRCC A
 Where FAIRBAULT, MN
 Judge CHRISTEN, THERESA A
 Dutch 52
 BOB Black SD Thomas Smith
 BOS Gray JB Richard Deplazes
 Black 23 SD Thomas Smith
 Blue 6 SB Jim Daluge
 Gray 6 JB Richard Deplazes
 Choc 7 JD Thomas Smith
 Steel 8 JD Thomas Smith
 Tort 2 SB Thomas Smith

Date 5-7-2006
 Show CRCS A
 Where POMONA, CA
 Judge MARESKA, KIM
 Dutch 39
 BOB Black SD Scott Williamson
 BOS Blue SB Scott Williamson
 Black 18 SD Scott Williamson
 Blue 12 SB Scott Williamson
 Gray
 Choc 1 SB nonmember
 Steel
 Tort 8 JB nonmember

Date 5-13-2006
 Show WCRBA A
 Where DELTA, CO
 Judge CONYERS, JAMES F
 Dutch 13
 BOB Black JD nonmember
 BOS Chocolate SB nonmember
 Black 7 JD nonmember
 Blue 1 SD nonmember
 Gray 3 SD nonmember
 Choc 2 SB nonmember
 Steel
 Tort

Date 5-6-2006
 Show HCRCA A
 Where CODY, WY
 Judge WEEKS, LAWRENCE LEE
 Dutch 9
 BOB Black SD John Jones
 BOS Gray SB John Jones
 Black 4 SD John Jones
 Blue 2 SB John Jones
 Gray 2 SB John Jones
 Choc 1 SB John Jones
 Steel
 Tort

Date 5-6-2006
 Show AWTYRCC B
 Where FAIRBAULT, MN
 Judge DAPPER, ANNA
 Dutch 36
 BOB Black JB Mike Stuewe
 BOS Black SD Thomas Smith
 Black 19 JB Mike Stuewe
 Blue 5 SD Thomas Smith
 Gray 1 SB Thomas Smith
 Choc 5 SD Thomas Smith
 Steel 5 JD Thomas Smith
 Tort 1 SB Thomas Smith

Date 5-7-2006
 Show CRCS B
 Where POMONA, CA
 Judge GREEN, JAMIE
 Dutch 39
 BOB Blue JB nonmember
 BOS Black SD Scott Williamson
 Black 18 SD Scott Williamson
 Blue 12 JB nonmember
 Gray
 Choc 1 SB nonmember
 Steel
 Tort 8 JD nonmember

Date 5-13-2006
 Show WCRBA B
 Where DELTA, CO
 Judge KRAUSE, ROGER L
 Dutch 15
 BOB Gray SB nonmember
 BOS Gray SD nonmember
 Black 8 JD nonmember
 Blue 2 SD nonmember
 Gray 3 SB nonmember
 Choc 2 SD nonmember
 Steel
 Tort

Date 5-6-2006
 Show HCRCA B
 Where CODY, WY
 Judge SAUL, KATY
 Dutch 12
 BOB Black SB nonmember
 BOS Blue SD Nikolas Soto
 Black 5 SB nonmember
 Blue 3 SD Nikolas Soto
 Gray
 Choc 2 SB John Jones
 Steel
 Tort

Date 5-6-2006
 Show ERRBA
 Where PARKER, SD
 Judge RICE, BRENT
 Dutch 54
 BOB Tortoise SB James Rydell
 BOS Gray SD Steve/Rita Blythe/Stelzer
 Black 20 JD James Rydell
 Blue 16 SD James Rydell
 Gray 5 SD Steve/Rita Blythe/Stelzer
 Choc 6 SD James Rydell
 Steel
 Tort 7 SB James Rydell

Date 5-7-2006
 Show RCRBA
 Where RICE LAKE, WI
 Judge CHRISTEN, THERESA A
 Dutch 29
 BOB Chocolate JB John Milroy
 BOS Gray JD Melody Stremkowski
 Black 8 SB Eric & Sharon Mixdorf
 Blue 6 JD John Milroy
 Gray 3 JD Melody Stremkowski
 Choc 6 JB John Milroy
 Steel 3 SD Eric & Sharon Mixdorf
 Tort 3 SD Melody Stremkowski

Date 5-13-2006
 Show FCRBA
 Where DELTA, CO
 Judge PEACOCK, MIKE
 Dutch 15
 BOB Black JD nonmember
 BOS Black SB Nikolas Soto
 Black 8 JD nonmember
 Blue 2 SD nonmember
 Gray 3 JD nonmember
 Choc 2 SB nonmember
 Steel
 Tort

Date 5-13-2006
Show FSRBA A
Where DELAND, FL
Judge WEST , GREGORY D
Dutch 36
BOB Chocolate SD William C Henley, III
BOS Blue SB Deborah M Stoller
Black 11 JD Tim Smith
Blue 6 SD Kennard E Henley
Gray 3 SD nonmember
Choc 10 SD William C Henley, III
Steel 1 JB nonmember
Tort 5 SD Marvin Cummings

Date 5-13-2006
Show FSRBA B
Where DELAND, FL
Judge LEMON, JAMES R
Dutch 40
BOB Black SD Tim Smith
BOS Gray SB nonmember
Black 13 SD Tim Smith
Blue 9 SD Michael Smith
Gray 4 SB nonmember
Choc 11 SD William C Henley, III
Steel 1 JB nonmember
Tort 5 SD Marvin Cummings

Date 5-13-2006
Show SVRCBA
Where CORUNNA, MI
Judge RICHTER , JOHN
Dutch 37
BOB Black SB Michael Smith
BOS Black SD Edward McKinley
Black 9 SB Michael Smith
Blue 6 SB Megan Gottschalk
Gray 12 SD Carlene Bell
Choc 5 SB Michael Smith
Steel 2 SB Edward McKinley
Tort 3 SD Edward McKinley

Date 5-13-2006
Show LCRBA A
Where PONTIAC, IL
Judge GEHR, RICHARD W
Dutch 17
BOB Chocolate SB Eric & Sharon Mixdorf
BOS Tortoise JD Dallas, Jane, & Eric Meyer
Black 8 JD Eric & Sharon Mixdorf
Blue 3 SD Paul & Chris Matthys
Gray 1 JD Paul & Chris Matthys
Choc 2 SB Eric & Sharon Mixdorf
Steel 2 SD Myron Millman
Tort 1 JD Dallas, Jane, & Eric Meyer

Date 5-13-2006
Show LCRBA B
Where PONTIAC, IL
Judge GREBNER, WALTER
Dutch 17
BOB Black JD Cathern A Hart
BOS Black SB Eric & Sharon Mixdorf
Black 8 JD Cathern A Hart
Blue 3 SD Paul & Chris Matthys
Gray 1 JD Paul & Chris Matthys
Choc 2 SB Eric & Sharon Mixdorf
Steel 2 SD Paul & Chris Matthys
Tort 1 JD Dallas, Jane, & Eric Meyer

Date 5-13-2006
Show FLRBA
Where CANADAIGUA, NY
Judge BROSE, HELEN
Dutch 14
BOB Gray SB John F Stenson
BOS Gray JD John F Stenson
Black 4 SB Harry Brokaw
Blue 3 JB John F Stenson
Gray 2 SB John F Stenson
Choc
Steel 1 JD John F Stenson
Tort 4 SD John F Stenson

Date 5-13-2006
Show SMRBA A
Where KNOXVILLE, TN
Judge BUTLER , ALVIN
Dutch 47
BOB Black JD Fred & Kathy Mullinax
BOS Steel JB Fred & Kathy Mullinax
Black 16 JD Fred & Kathy Mullinax
Blue 5 JB Marti Dill
Gray 8 SD Silas & Marge Drake
Choc 4 SD Fred & Kathy Mullinax
Steel
Tort 6 SD Fred & Kathy Mullinax

Date 5-13-2006
Show SMRBA B
Where KNOXVILLE, TN
Judge BUTLER, BARBARA
Dutch 50
BOB Steel JB Fred & Kathy Mullinax
BOS Gray SD Fred & Kathy Mullinax
Black 14 SB nonmember
Blue 10 SB Fred & Kathy Mullinax
Gray 8 SD Fred & Kathy Mullinax
Choc 4 SD Fred & Kathy Mullinax
Steel 8 JB Fred & Kathy Mullinax
Tort 6 SB Fred & Kathy Mullinax

Date 5-13-2006
Show SDRF SPEC
Where KNOXVILLE, TN
Judge HOOPER, KEVIN
Dutch 48
BOB Black JD Fred & Kathy Mullinax
BOS Black JB Marti Dill
Black 16 JD Fred & Kathy Mullinax
Blue 6 JD Fred & Kathy Mullinax
Gray 8 JD nonmember
Choc 4 SD Fred & Kathy Mullinax
Steel 7 JB Fred & Kathy Mullinax
Tort 6 JB Fred & Kathy Mullinax

Date 5-13-2006
Show NCRBA A
Where GAITHERSBURG, MD
Judge WILSON , CARLA
Dutch 45
BOB Black SD Todd Biddle
BOS Blue SB Aaron L. Martin
Black 16 SD Todd Biddle
Blue 9 SD Penn & Sue Peters
Gray 4 SD Aaron L. Martin
Choc 12 JD Aaron L. Martin
Steel 2 JD nonmember
Tort 2 JB nonmember

Date 5-13-2006
Show NCRBA B
Where GAITHERSBURG, MD
Judge RIDDLE, RONALD
Dutch 45
BOB Chocolate JD Penn & Sue Peters
BOS Gray SB Aaron L. Martin
Black 16 SD Todd Biddle
Blue 9 JB Penn & Sue Peters
Gray 4 SB Aaron L. Martin
Choc 12 JD Penn & Sue Peters
Steel 2 SB nonmember
Tort 2 JB nonmember

Date 5-13-2006
Show MSRP
Where SEDALIA, MO
Judge DICKERSON, RANDY K
Dutch 10
BOB Blue SD Jack Gilmore
BOS Chocolate JB nonmember
Black 6 JD Jack Gilmore
Blue 3 SD Jack Gilmore
Gray
Choc 1 JB nonmember
Steel
Tort

Date 5-13-2006
Show HCRBA
Where NORWALK, OH
Judge PATRICK, CATHY
Dutch 12
BOB Chocolate SD Shelly Thompson
BOS Steel JB Shelly Thompson
Black 3 JB nonmember
Blue 3 JD nonmember
Gray 2 SD nonmember
Choc 2 SD Shelly Thompson
Steel 2 JB Shelly Thompson
Tort

Date 5-13-2006
Show RFNCO
Where NORWALK, OH
Judge PETRAS, RON
Dutch 12
BOB Chocolate SD Shelly Thompson
BOS Steel JB Shelly Thompson
Black 3 JB nonmember
Blue 3 JD nonmember
Gray 2 JB nonmember
Choc 2 SD Shelly Thompson
Steel 2 JB Shelly Thompson
Tort

Date 5-13-2006
Show BBB A
Where BILLINGS, MT
Judge WEEKS , LAWRENCE LEE
Dutch 10
BOB Black JB John Jones
BOS Black SD John Jones
Black 5 JB John Jones
Blue 3 JB nonmember
Gray 1 SB John Jones
Choc 1 SB John Jones
Steel
Tort

Date 5-13-2006
Show BBB B
Where BILLINGS, MT
Judge BEAN , JODY
Dutch 11
BOB Black SB nonmember
BOS Black SD John Jones
Black 5 SB nonmember
Blue 4 SD John Jones
Gray
Choc 1 SB John Jones
Steel
Tort

Date 5-13-2006
Show CCRBA
Where NORTH HAVEN, CT
Judge SHAFTOE, BOB
Dutch 25
BOB Tortoise SD nonmember
BOS Blue SB nonmember
Black 14 JB Mary Ellen Stamets
Blue 7 JD nonmember
Gray
Choc 1 SB nonmember
Steel
Tort 3 SD nonmember

Date 5-13-2006
Show NEDRC SPEC
Where WINDSOR LOCKS, CT
Judge DELMASTRO, FRANCIS P
Dutch 22
BOB Blue SD Sharon Sartori
BOS Black JB Mary Ellen Stamets
Black 12 JB Mary Ellen Stamets
Blue 7 SD Sharon Sartori
Gray
Choc 1 SB nonmember
Steel
Tort 2 SD nonmember

Date 5-14-2006
Show UMDRC SPEC
Where DODGEVILLE, WI
Judge WENZEL, SHERI
Dutch 78
BOB Black JB Warren Wiltman
BOS Blue JD Valerie Worzella
Black 19 JB Warren Wiltman
Blue 15 JB Valerie Worzella
Gray 11 SB Theresa M Kortbein
Choc 16 JD Warren Wiltman
Steel 2 JB Albert/Dakota Newman/Papakee
Tort 14 SB Dan Schwandt

Date 5-14-2006
Show SWWRC
Where DODGEVILLE, WI
Judge GRIMM , JOHN
Dutch 81
BOB Black JB Warren Wiltman
BOS Blue JD Valerie Worzella
Black 20 JB Warren Wiltman
Blue 15 JB Warren Wiltman
Gray 14 SB Theresa M Kortbein
Choc 16 JD Dan Schwandt
Steel 3 JB Dennis & Karlene McAtee
Tort 13 SB Dan Schwandt

Date 5-14-2006
Show NC4-HAB
Where KENDALLVILLE, IN
Judge BERGER, TOM
Dutch 7
BOB Steel SB Susan & Carolyn Jock
BOS Gray SD nonmember
Black 2 SD Susan & Carolyn Jock
Blue
Gray 3 SD nonmember
Choc
Steel 2 SB Susan & Carolyn Jock
Tort

Date 5-20-2006
Show KCRBA A
Where BAKERSFIELD, CA
Judge STACY, RAY
Dutch 42
BOB Black SB Scott Williamson
BOS Black JD Fred & Helen Schmall
Black 9 SB Scott Williamson
Blue 10 SB Scott Williamson
Gray 4 SD Fred & Helen Schmall
Choc 10 SB Tracy Albertoni
Steel 2 SD Fred & Helen Schmall
Tort 7 JB Scott Williamson

Date 5-20-2006
Show KCRBA B
Where BAKERSFIELD, CA
Judge LUGO, JOE A
Dutch 42
BOB Black JD Scott Williamson
BOS Blue SB Scott Williamson
Black 9 JD Scott Williamson
Blue 10 SB Scott Williamson
Gray 4 SD Fred & Helen Schmall
Choc 10 SD Scott Williamson
Steel 2 SD Fred & Helen Schmall
Tort 7 JB Scott Williamson

Date 5-20-2006
Show BCRBA
Where LEESPORT, PA
Judge ???
Dutch 19
BOB Chocolate SD Aaron L. Martin
BOS Black JB Aaron L. Martin
Black 4 JB Aaron L. Martin
Blue 6 SB Aaron L. Martin
Gray 6 SD Aaron L. Martin
Choc 2 SD Aaron L. Martin
Steel 1 JD nonmember
Tort

Date 5-20-2006
 Show HTRC
 Where CHEYENNE, WY
 Judge TUNTLAND, DERECK
 Dutch 12
 BOB Gray SB nonmember
 BOS Gray SD nonmember
 Black 8 JD nonmember
 Blue
 Gray 2 SB nonmember
 Choc
 Steel
 Tort 1 SB nonmember

Date 5-20-2006
 Show PS
 Where NAVASOTA, TX
 Judge MCCracken, KEN
 Dutch 24
 BOB Black SD nonmember
 BOS Chocolate JB nonmember
 Black 10 SD nonmember
 Blue 2 SB nonmember
 Gray 3 SB nonmember
 Choc 3 JB nonmember
 Steel 1 JD nonmember
 Tort 5 JB nonmember

Date 5-20-2006
 Show WMRBA A
 Where IONIA, MI
 Judge SWARTZ, ROBERT
 Dutch 48
 BOB Black SD Michael Smith
 BOS Blue SB Janet Bowers
 Black 10 SD Michael Smith
 Blue 9 JD Michael Smith
 Gray 13 SD Jenni Himebaugh
 Choc 8 SD Michael Smith
 Steel 5 JB Janet Bowers
 Tort 3 SB Edward McKinley

Date 5-20-2006
 Show WMRBA B
 Where IONIA, MI
 Judge BRANHAM, TIM
 Dutch 48
 BOB Black SB Michael Smith
 BOS Black SD Michael Smith
 Black 10 SB Michael Smith
 Blue 9 SD Michael Smith
 Gray 13 JB Michael Smith
 Choc 8 JB Henry & Donna Carpenter
 Steel 5 SB Edward McKinley
 Tort 3 JD Carlene Bell

Date 5-20-2006
 Show CEMRB A
 Where MONTGOMERY CITY, MO
 Judge RICE, BRENT
 Dutch 25
 BOB Black JB Gary Clark
 BOS Blue JD Dale Bernhardt
 Black 6 JB Gary Clark
 Blue 18 JB Gary Clark
 Gray
 Choc 1 SD Gary Clark
 Steel
 Tort

Date 5-20-2006
 Show CEMRB B
 Where MONTGOMERY CITY, MO
 Judge ELLIOTT, JANIE
 Dutch 25
 BOB Blue JB Gary Clark
 BOS Blue JD Dale Bernhardt
 Black 6 JD Dale Bernhardt
 Blue 18 JB Gary Clark
 Gray
 Choc 1 SD Gary Clark
 Steel
 Tort

Date 5-20-2006
 Show SCRC S SPEC
 Where CANTON, OH
 Judge BUTLER, ALVIN
 Dutch 47
 BOB Tortoise SD Ron & Renee Russ
 BOS Gray SB John Imes
 Black 8 JB Penn & Sue Peters
 Blue 4 JB Penn & Sue Peters
 Gray 11 SB John Imes
 Choc 13 JD Ron & Renee Russ
 Steel 9 JD Ron & Renee Russ
 Tort 2 SD Ron & Renee Russ

Date 5-20-2006
 Show SCRC S A
 Where CANTON, OH
 Judge BOGAN, KEVIN
 Dutch 57
 BOB Steel JD Ron & Renee Russ
 BOS Blue JB Penn & Sue Peters
 Black 9 SB Ron & Renee Russ
 Blue 8 JB Penn & Sue Peters
 Gray 15 JD Ron & Renee Russ
 Choc 16 SD Penn & Sue Peters
 Steel 7 JD Ron & Renee Russ
 Tort 2 JB Ron & Renee Russ

Date 5-20-2006
 Show MVRCA
 Where FRANKFORT, NY
 Judge VECCHIO, DEBORAH
 Dutch 2
 BOB Black SB nonmember
 BOS Chocolate SD nonmember
 Black 1 SB nonmember
 Blue
 Gray
 Choc 1 SD nonmember
 Steel
 Tort

Date 5-20-2006
 Show IERBA A
 Where DAVENPORT, WA
 Judge DIETZMAN, SUSAN M
 Dutch 70
 BOB Blue SD Hilary Wittrock
 BOS Chocolate JB Pete Nelsen
 Black 13 JD Sydney Britton
 Blue 12 SD Hilary Wittrock
 Gray 13 SD Lloyd D Greqq
 Choc 10 JB Pete Nelsen
 Steel 6 JB Hilary Wittrock
 Tort 16 SB Jean Harris

Date 5-20-2006
 Show IERBA B
 Where DAVENPORT, WA
 Judge DIETZMAN, ROBERT
 Dutch 70
 BOB Black JB Jean Harris
 BOS Chocolate SD Sydney Britton
 Black 13 JB Jean Harris
 Blue 12 SD Hilary Wittrock
 Gray 13 SB Hilary Wittrock
 Choc 10 JB Pete Nelsen
 Steel 6 SB Lloyd D Greqq
 Tort 16 SB Lloyd D Greqq

Date 5-21-2006
 Show CORFBA
 Where POLAND, ME
 Judge BREWER, RAYMOND
 Dutch 7
 BOB Black SB Paul Jacques
 BOS Black JD Paul Jacques
 Black 4 SB Paul Jacques
 Blue
 Gray 2 SD Paul Jacques
 Choc 1 SB Paul Jacques
 Steel
 Tort

Date 5-21-2006
 Show YCRBA
 Where POLAND, ME
 Judge KRAUS, FREDA
 Dutch 7
 BOB Gray SD Paul Jacques
 BOS Chocolate SB Paul Jacques
 Black 4 SB Paul Jacques
 Blue
 Gray 2 SD Paul Jacques
 Choc 1 SB Paul Jacques
 Steel
 Tort

Date 5-21-2006
 Show WARBA
 Where VASHUA, IA
 Judge BARNES, BRIONY
 Dutch 66
 BOB Black SB Eric & Sharon Mixdorf
 BOS Gray SD Albert/Dakota Newman/Papakee
 Black 19 SB Eric & Sharon Mixdorf
 Blue 11 SD Thomas Smith
 Gray 7 SD Albert/Dakota Newman/Papakee
 Choc 13 SB Thomas Smith
 Steel 11 SD Eric & Sharon Mixdorf
 Tort 14 SB Eric & Sharon Mixdorf

Date 5-21-2006
 Show SCRC S B
 Where CANTON, OH
 Judge KELLER, HOWARD L
 Dutch 33
 BOB Gray SD Ron & Renee Russ
 BOS Gray SB Ron & Renee Russ
 Black 6 JD Ron & Renee Russ
 Blue 2 SD nonmember
 Gray 8 SD Ron & Renee Russ
 Choc 8 JD Ron & Renee Russ
 Steel 6 SB Ron & Renee Russ
 Tort 3 SD Ron & Renee Russ

Date 5-21-2006
 Show SLRC SPEC
 Where UNION GROVE, WI
 Judge HAUSER, DAVID
 Dutch 17
 BOB Gray SB Theresa M Kortbein
 BOS Black SD Dan Schwandt
 Black 2 SD Dan Schwandt
 Blue 2 JD Theresa M Kortbein
 Gray 3 SB Theresa M Kortbein
 Choc
 Steel
 Tort 10 SB Dan Schwandt

Date 5-21-2006
 Show SLRC
 Where UNION GROVE, WI
 Judge CHRISTEN, THERESA A
 Dutch 11
 BOB Gray SB Theresa M Kortbein
 BOS Blue JD Theresa M Kortbein
 Black 1 SD Dan Schwandt
 Blue 2 JD Theresa M Kortbein
 Gray 2 SB Theresa M Kortbein
 Choc
 Steel
 Tort 6 SB Dan Schwandt

Date 5-27-2006
 Show IRBA A
 Where EAU CLAIRE, WI
 Judge PATRICK, CATHY
 Dutch 5
 BOB Black SB Anthony Gates
 BOS Gray SD Wayne Foltz
 Black 2 SB Anthony Gates
 Blue 2 SB Karen & Darrell Gates
 Gray 1 SD Wayne Foltz
 Choc
 Steel
 Tort

Date 5-27-2006
 Show IRBA B
 Where EAU CLAIRE, WI
 Judge BOYCE, BRAD
 Dutch 5
 BOB Black SB Anthony Gates
 BOS Blue JD Wayne Foltz
 Black 2 SB Anthony Gates
 Blue 2 SB Karen & Darrell Gates
 Gray 1 SD Wayne Foltz
 Choc
 Steel
 Tort

Date 5-27-2006
 Show GCRBA A
 Where HAMILTON, MT
 Judge UPTAGRAFFT, VALERIE
 Dutch 37
 BOB Steel SB Benton Anderson
 BOS Black JD Benton Anderson
 Black 8 JB nonmember
 Blue 3 JB nonmember
 Gray 4 SB Benton Anderson
 Choc 2 SD nonmember
 Steel 1 SB Benton Anderson
 Tort 9 SD nonmember

Date 5-27-2006
 Show GCRBA B
 Where HAMILTON, MT
 Judge WEEKS, LAWRENCE LEE
 Dutch 36
 BOB Black SD Diane Nelson
 BOS Black JB Diane Nelson
 Black 17 SD Diane Nelson
 Blue 3 SB nonmember
 Gray 5 JD Benton Anderson
 Choc 2 SD nonmember
 Steel 1 SB Benton Anderson
 Tort 8 SD nonmember

Date 5-27-2006
 Show CSRBA A
 Where BARTOW, FL
 Judge LYNCH, KITTY
 Dutch 50
 BOB Blue SD Tina Garrison
 BOS Tortoise JB Dale Graberbauer
 Black 16 JD Tim Smith
 Blue 6 SD Tina Garrison
 Gray 3 SB William C Henley, III
 Choc 13 JD William C Henley, III
 Steel 2 SB William C Henley, III
 Tort 10 SD Dale Graberbauer

Date 5-27-2006
 Show CSRBA B
 Where BARTOW, FL
 Judge ROUSH, DR STEPHEN
 Dutch 58
 BOB Tortoise JB Dale Graberbauer
 BOS Gray SD William C Henley, III
 Black 17 SB William C Henley, III
 Blue 7 SD Tina Garrison
 Gray 8 JB Kevin Garrison
 Choc 12 JD Dale Graberbauer
 Steel 7 SB William C Henley, III
 Tort 7 JB Dale Graberbauer

Date 5-27-2006
 Show GAA A
 Where SHELBY, NC
 Judge RICE, BILL
 Dutch 28
 BOB Tortoise JB Fred Mullinax
 BOS Black JD Fred Mullinax
 Black 6 JD Fred Mullinax
 Blue 6 JB Fred Mullinax
 Gray 7 JD Herb Kelso
 Choc 2 SD Fred Mullinax
 Steel 5 JD nonmember
 Tort 2 JB Fred Mullinax

<p>Date 5-27-2006 Show GAA B Where SHELBY, NC Judge WESTHOFF, RUSTY Dutch 26 BOB Gray JD Herb Kelso BOS Gray SB Silas & Marae Drake Black 5 SD Herb Kelso Blue 5 JD Herb Kelso Gray 7 JD Herb Kelso Choc 2 SD Fred & Kathy Mullinax Steel 5 JD nonmember Tort 2 JB Fred & Kathy Mullinax</p>	<p>Date 5-27-2006 Show HCERP B Where HUNTINGTON, IN Judge SHUMAKER, RANDY Dutch 10 BOB Tortoise SB Susan & Carolyn Jock BOS Black SD Susan & Carolyn Jock Black 2 SD Susan & Carolyn Jock Blue 2 SB Susan & Carolyn Jock Gray 1 SD nonmember Choc Steel 3 SB Susan & Carolyn Jock Tort 2 SB Susan & Carolyn Jock</p>	<p>Date 5-28-2006 Show IRBA C Where EAU CLAIRE, WI Judge DAPPER, ANNA Dutch 5 BOB Black SB Anthony Gates BOS Gray SD Wayne Foltz Black 2 SB Anthony Gates Blue 2 SB Karen & Darrell Gates Gray 1 SD Wayne Foltz Choc Steel Tort</p>	<p>Date 5-28-2006 Show DCOA SPEC Where GLENDALE, AZ Judge HARDIN, JEFF Dutch 10 BOB Black SD Pat Mareska BOS Black SB Pat Mareska Black 4 SD Pat Mareska Blue 3 SB Pat Mareska Gray Choc 3 JB nonmember Steel Tort</p>
<p>Date 5-27-2006 Show GAA C Where SHELBY, NC Judge FRANKLIN, LYMAN Dutch 20 BOB Blue JD nonmember BOS Black SB nonmember Black 4 JD Fred Mullinax Blue 4 JD nonmember Gray 4 SD Silas & Marge Drake Choc 1 SD Fred Mullinax Steel 5 JD nonmember Tort 2 SB Fred Mullinax</p>	<p>Date 5-27-2006 Show NERCA Where HARTFORD, PA Judge BELL, RUTH ANN Dutch 5 BOB Chocolate SB nonmember BOS Black SD nonmember Black 1 SD nonmember Blue Gray Choc 4 SB nonmember Steel Tort</p>	<p>Date 5-28-2006 Show IRBA D Where EAU CLAIRE, WI Judge Dutch BOB BOS Black Blue Gray Choc Steel Tort</p>	<p>Date 5-28-2006 Show KCRCBA Where MT VERNON, OH Judge Dutch BOB BOS Black Blue Gray Choc Steel Tort</p>
<p>Date 5-27-2006 Show BTRA Where RUSTON, LA Judge HUMPHRIES, JOSH Dutch 68 BOB Steel JD Steve & Sherry Patton BOS Gray JB Lynn Hebert Black 15 JD Eric & Gwen Himel Blue 8 JD Eric & Gwen Himel Gray 21 JD nonmember Choc 5 JD James & Liane Baird Steel 9 JD Steve & Sherry Patton Tort 10 JD nonmember</p>	<p>Date 5-27-2006 Show OSDRC A SPEC Where TIFFIN, OH Judge D'AMICO, MIKE Dutch 101 BOB Tortoise SD Todd Uran BOS Gray JB Dennis, Barb. & Megan Kline Black 23 JD Dennis, Barb. & Megan Kline Blue 11 JD Michael Smith Gray 22 SD Dennis, Barb. & Megan Kline Choc 21 SD Shelly Thompson Steel 4 JB Shelly Thompson Tort 20 SD Todd Uran</p>	<p>Date 5-28-2006 Show GCRBA C Where HAMILTON, MT Judge STACY, RAY Dutch 31 BOB Black JB Diane Nelson BOS Gray JD Benton Anderson Black 15 JB Diane Nelson Blue 3 SB nonmember Gray 3 JD Benton Anderson Choc 2 SD nonmember Steel 1 SB Benton Anderson Tort 7 SB nonmember</p>	<p>Date 5-28-2006 Show HORCC Where MT VERNON, OH Judge Dutch BOB BOS Black Blue Gray Choc Steel Tort</p>
<p>Date 5-27-2006 Show ALTRC Where RUSTON, LA Judge TERRY, MARY JO Dutch 61 BOB Steel SD Steve & Sherry Patton BOS Steel JB Randy Ryland Black 15 JB Steve & Sherry Patton Blue 5 SD Eric & Gwen Himel Gray 21 JD Yvonne Hebert Choc 1 SD Randy Ryland Steel 9 SD Steve & Sherry Patton Tort 10 JD nonmember</p>	<p>Date 5-27-2006 Show OSDRC B SPEC Where TIFFIN, OH Judge ADAMS, MIKE Dutch 99 BOB Black SB Michael Smith BOS Chocolate JD Dennis, Barb. & Megan Kline Black 22 SB Michael Smith Blue 11 SB Michael Smith Gray 21 SD Alan Miller Choc 22 JD Dennis, Barb. & Megan Kline Steel 3 JB Shelly Thompson Tort 20 JB Todd Uran</p>	<p>Date 5-28-2006 Show GCRBA D Where HAMILTON, MT Judge UPTAGRAFFT, MICHELLE Dutch 32 BOB Gray SB Benton Anderson BOS Black SD Diane Nelson Black 16 JB Diane Nelson Blue 3 SB nonmember Gray 3 SB Benton Anderson Choc 2 SB nonmember Steel 1 SB Benton Anderson Tort 7 SD nonmember</p>	<p>Date 5-28-2006 Show CMRBN Where STURBRIDGE, MA Judge PLATT, ALAN Dutch 17 BOB Chocolate SB Pam Dunning BOS Blue SD nonmember Black 6 SB Pam Dunning Blue 7 SB nonmember Gray Choc 4 SB Pam Dunning Steel Tort</p>
<p>Date 5-27-2006 Show NLRA Where RUSTON, LA Judge HOOKS, CARROL G Dutch 67 BOB Steel JB Randy Ryland BOS Tortoise JD Yvonne Hebert Black 15 JD Steve & Sherry Patton Blue 7 SD Eric & Gwen Himel Gray 21 SD Randy Ryland Choc 5 JD James & Liane Baird Steel 9 JB Randy Ryland Tort 10 JD Yvonne Hebert</p>	<p>Date 5-27-2006 Show WBRC A Where HUTCHINSON, MN Judge HAUSER, DAVID Dutch 80 BOB Gray JD Steve/Rita Blythe/Stelzer BOS Blue JB Mike Stuewe Black 22 SD Mike Stuewe Blue 14 JD Steve/Rita Blythe/Stelzer Gray 12 JD Steve/Rita Blythe/Stelzer Choc 15 SD James Rydell Steel 5 JB Albert/Dakota Newman/Papakee Tort 12 JD Steve/Rita Blythe/Stelzer</p>	<p>Date 5-28-2006 Show HCERP C Where HUNTINGTON, IN Judge YOUNG, MICHAEL D Dutch 3 BOB Black SB nonmember BOS Black SD nonmember Black 2 SB nonmember Blue Gray 1 SD nonmember Choc Steel Tort</p>	<p>Date 5-28-2006 Show NTOTP A Where SEWARD, NE Judge AVESING, MIKE Dutch 20 BOB Black JD Andy Hawthorne BOS Blue SB nonmember Black 12 JD Andy Hawthorne Blue 5 SB nonmember Gray Choc Steel Tort 1 SB nonmember</p>
<p>Date 5-27-2006 Show HCERP A Where HUNTINGTON, IN Judge HARTZELL, BRIAN Dutch 11 BOB Tortoise SB Susan & Carolyn Jock BOS Black SD nonmember Black 3 SD nonmember Blue 2 SB Susan & Carolyn Jock Gray 1 SD nonmember Choc Steel 3 SB Susan & Carolyn Jock Tort 2 SB Susan & Carolyn Jock</p>	<p>Date 5-27-2006 Show WBRC B Where HUTCHINSON, MN Judge THOMAS, N W TEX Dutch 65 BOB Blue JB James Rydell BOS Gray JD Steve/Rita Blythe/Stelzer Black 16 JB Mike Stuewe Blue 12 JB James Rydell Gray 8 JD Steve/Rita Blythe/Stelzer Choc 14 SD Tiffany Wayne Steel 3 SD Don Van Hylte Tort 12 SD Steve/Rita Blythe/Stelzer</p>	<p>Date 5-28-2006 Show HCERP D Where HUNTINGTON, IN Judge YOUNG, MICHAEL D Dutch 2 BOB Black SB nonmember BOS Gray SD nonmember Black 1 SB nonmember Blue Gray 1 SD nonmember Choc Steel Tort</p>	<p>Date 5-28-2006 Show NTOTP B Where SEWARD, NE Judge ADDISON, CONALL Dutch 26 BOB Chocolate SB nonmember BOS Black JD Kristin Renk Black 15 SB nonmember Blue 8 SD nonmember Gray Choc 2 SB nonmember Steel Tort 1 SB nonmember</p>

<p>Date 5-28-2006 Show WBRC C Where HUTCHINSON, MN Judge THOMAS , TONNA Dutch 13 BOB Black JB Mike Stuewe BOS Black SD Mike Stuewe Black 5 JB Mike Stuewe Blue 1 JB Mike Stuewe Gray 1 SB Tiffany Wayne Choc 1 SB Tiffany Wayne Steel 1 SD Tiffany Wayne Tort 4 SD Tiffany Wayne</p>	<p>Date 6-3-2006 Show FDRBA SPEC Where DELAND, FL Judge MARSHALL , JOEL Dutch 57 BOB Blue SD Kevin Garrison BOS Black JB nonmember Black 13 JB nonmember Blue 7 SD Kevin Garrison Gray 7 SB Dylan Rutledge Choc 13 JB nonmember Steel 6 SD Nikki Rutledge Tort 11 SD Dale Graberbauer</p>	<p>Date 6-3-2006 Show KDC SPEC Where WICHITA, KS Judge KROENKE, DAVID M Dutch 41 BOB Gray JD Marvin Cole BOS Blue SB Bob Bergene Black 12 JD Briony Barnes Blue 10 SB Bob Bergene Gray 6 JD Marvin Cole Choc 4 JD Bob Bergene Steel 3 JB nonmember Tort 6 JB Briony Barnes</p>	<p>Date 6-4-2006 Show CRBA Where NORTH HAVEN, CT Judge NARAGON, TODD Dutch 5 BOB Black SD Sharon Sartori BOS Black SB Sharon Sartori Black 3 SD Sharon Sartori Blue 2 SD Sharon Sartori Gray Choc Steel Tort</p>
<p>Date 5-28-2006 Show WBRC D Where HUTCHINSON, MN Judge GRIMM , JOHN Dutch 28 BOB Gray JD Steve/Rita Blythe/Stelzer BOS Black JB Mike Stuewe Black 9 JB Mike Stuewe Blue 4 SD Steve/Rita Blythe/Stelzer Gray 5 JD Steve/Rita Blythe/Stelzer Choc 3 JD Don Van Hyfte Steel 2 SD Tiffany Wayne Tort 5 SD Tiffany Wayne</p>	<p>Date 6-3-2006 Show OLORCB Where NEWPORT, OR Judge GERMAINE, GEORGE Dutch 28 BOB Blue SD Matt/Jill Gholden/Pfaff BOS Blue JB Gene Knieling Black 6 SD Matt/Jill Gholden/Pfaff Blue 7 SD Matt/Jill Gholden/Pfaff Gray 6 SD Gene Knieling Choc Steel 5 JD Anthony Campbell Tort 4 JD Matt/Jill Gholden/Pfaff</p>	<p>Date 6-3-2006 Show MTRBA Where COLUMBIA, TN Judge KINGSBURY , BRAD Dutch 21 BOB Black JD nonmember BOS Black JB nonmember Black 4 JD nonmember Blue 5 JD nonmember Gray 5 SD Silas & Marge Drake Choc 6 SB Don Burchfield Steel 1 SB Silas & Marge Drake Tort</p>	<p>Date 6-4-2006 Show CRBA SPEC A Where NORTH HAVEN, CT Judge CARDINAL, DAVID Dutch 5 BOB Blue SD Sharon Sartori BOS Black SB Sharon Sartori Black 3 SB Sharon Sartori Blue 2 SD Sharon Sartori Gray Choc Steel Tort</p>
<p>Date 5-28-2006 Show WBRC SPEC Where HUTCHINSON, MN Judge CHRISTEN, THERESA A Dutch 22 BOB Blue SD Steve/Rita Blythe/Stelzer BOS Tortoise SB Tiffany Wayne Black 8 SD Mike Stuewe Blue 3 SD Steve/Rita Blythe/Stelzer Gray 5 JD Steve/Rita Blythe/Stelzer Choc 1 SB Tiffany Wayne Steel 1 SD Tiffany Wayne Tort 4 SB Tiffany Wayne</p>	<p>Date 6-3-2006 Show OHR Where STELLA, MO Judge VOGTS, VICTOR Dutch 11 BOB Chocolate JD nonmember BOS Black JB nonmember Black 2 JB nonmember Blue 2 JD nonmember Gray Choc 6 JD nonmember Steel Tort 1 JD nonmember</p>	<p>Date 6-3-2006 Show BRC Where BROOKINGS, SD Judge DAPPER, ANNA Dutch 44 BOB Blue JD Steve/Rita Blythe/Stelzer BOS Blue SB James Rydell Black 10 JB James Rydell Blue 13 JD Steve/Rita Blythe/Stelzer Gray 5 SD Steve/Rita Blythe/Stelzer Choc 9 JB James Rydell Steel Tort 7 JD James Rydell</p>	<p>Date 6-4-2006 Show CRBA SPEC B Where NORTH HAVEN, CT Judge CARDINAL, DAVID Dutch 14 BOB Gray SB Lauren & Sean Kinane BOS Blue SD Lauren & Sean Kinane Black 3 SD Jasmine Wright Blue 2 SD Lauren & Sean Kinane Gray 5 SB Lauren & Sean Kinane Choc 2 JD Jasmine Wright Steel 1 SB Lauren & Sean Kinane Tort 1 SD Lauren & Sean Kinane</p>
<p>Date 6-2-2006 Show OLORCB SPEC Where NEWPORT, OR Judge PALMBLAD, LAVERN Dutch 35 BOB Black SD Matt/Jill Gholden/Pfaff BOS Black JB Matt/Jill Gholden/Pfaff Black 5 SD Matt/Jill Gholden/Pfaff Blue 7 SD Matt/Jill Gholden/Pfaff Gray 9 SD Matt/Jill Gholden/Pfaff Choc Steel 8 SD Graham Shields Tort 6 SB Matt/Jill Gholden/Pfaff</p>	<p>Date 6-3-2006 Show IHRCB Where OSKALOOSA, IA Judge DICKERSON, RANDY K Dutch 12 BOB Black SB nonmember BOS Gray JD Albert/Dakota Newman/Papakee Black 1 SB nonmember Blue Gray 2 SB Albert/Dakota Newman/Papakee Choc 3 JB Albert/Dakota Newman/Papakee Steel 1 JB Albert/Dakota Newman/Papakee Tort 5 SB Albert/Dakota Newman/Papakee</p>	<p>Date 6-4-2006 Show CPRBA Where STATE COLLEGE, PA Judge RIDDLE, RONALD Dutch 7 BOB Black SD Harry Brokaw BOS Black SB Harry Brokaw Black 5 SD Harry Brokaw Blue Gray Choc Steel Tort 2 SB Breanna Brokaw</p>	<p>Date 6-4-2006 Show IRBA A Where CRESCENT CITY, IL Judge WUNDERLIN, MARVIN Dutch 25 BOB Black JD Cathern A Hart BOS Black JB Theresa M Kortbein Black 9 JD Cathern A Hart Blue 4 JD Dan Schwandt Gray 3 JB Theresa M Kortbein Choc 2 JB Jeffrey & Christine Cornelius Steel 1 SD Myron Millman Tort 6 JD Dan Schwandt</p>
<p>Date 6-3-2006 Show A Where DELAND, FL Judge BREWER, RAYMOND Dutch 47 BOB Blue SD Tina Garrison BOS Black JB nonmember Black 12 SD Tim Smith Blue 6 SD Tina Garrison Gray 4 SB William C Henley, III Choc 13 SD nonmember Steel 2 SB William C Henley, III Tort 10 SB Marvin Cumminas</p>	<p>Date 6-3-2006 Show PPRBA A Where KIOWA, CO Judge CRAYTHORN, NEAL Dutch 26 BOB Chocolate SB nonmember BOS Gray SD nonmember Black 14 SB John Chew Blue 4 JD John Chew Gray 4 SD nonmember Choc 3 SB nonmember Steel Tort 1 SB Glen & Cheryl McMuri</p>	<p>Date 6-4-2006 Show TCROP Where STATE COLLEGE, PA Judge RIZZO, SAM Dutch 7 BOB Black SB Harry Brokaw BOS Black SD Harry Brokaw Black 5 SB Harry Brokaw Blue Gray Choc Steel Tort 2 SB Breanna Brokaw</p>	<p>Date 6-4-2006 Show IRBA B Where CRESCENT CITY, IL Judge SLACK, KELLI Dutch 17 BOB Gray SB Theresa M Kortbein BOS Tortoise JD Dan Schwandt Black 8 JB Theresa M Kortbein Blue 2 SB Cathern A Hart Gray 3 SB Theresa M Kortbein Choc 1 JB Jeffrey & Christine Cornelius Steel 1 SD Myron Millman Tort 2 JB Dan Schwandt</p>
<p>Date 6-3-2006 Show B Where DELAND, FL Judge LONG, GEORGE Dutch 56 BOB Steel SB William C Henley, III BOS Gray SD Kevin Garrison Black 13 JB nonmember Blue 7 SD Kevin Garrison Gray Choc 13 JD nonmember Steel 6 SB William C Henley, III Tort 10 SD Marvin Cumminas</p>	<p>Date 6-3-2006 Show PPRBA B Where KIOWA, CO Judge REZAC, RUBY Dutch 25 BOB Gray SD nonmember BOS Chocolate SB nonmember Black 13 SD Amelia Chew Blue 4 JD John Chew Gray 4 SD nonmember Choc 3 SB nonmember Steel Tort 1 SB Glen & Cheryl McMuri</p>	<p>Date 6-4-2006 Show OLORCB Where NEWPORT, OR Judge GERMAINE, GEORGE Dutch 28 BOB Black JB Matt/Jill Gholden/Pfaff BOS Blue SD Matt/Jill Gholden/Pfaff Black 6 JB Matt/Jill Gholden/Pfaff Blue 6 JB Gene Knieling Gray 6 JD Matt/Jill Gholden/Pfaff Choc Steel 5 JD Anthony Campbell Tort 4 JB Matt/Jill Gholden/Pfaff</p>	<p>Date 6-10-2006 Show BCRBA Where ITHACA, NY Judge BROSE, HELEN Dutch 32 BOB Gray SB John F Stenson BOS Chocolate SD Aaron L Martin Black 10 JD John F Stenson Blue 7 SB Aaron L Martin Gray 5 SB John F Stenson Choc 7 SD Aaron L Martin Steel Tort 3 SB Breanna Brokaw</p>

<p>Date 6-10-2006 Show HDRF SPEC Where REYNOLDS, IN Judge BERGER, TOM Dutch 47 BOB Gray SD Alan Miller BOS Black SB Stanley Goegelein Black 12 SB Stanley Goegelein Blue 6 JD Kelly Cummings Gray 19 SD Alan Miller Choc 1 JD nonmember Steel 2 SB Alan Miller Tort 7 SB Kim Case</p>	<p>Date 6-10-2006 Show TMRC A Where SPARKS, NV Judge BROWN, SHARON Dutch 29 BOB Black SD nonmember BOS Steel SB nonmember Black 11 SD nonmember Blue 2 SB nonmember Gray 6 SB nonmember Choc 7 SB Frankie Rios Steel 3 JD nonmember Tort</p>	<p>Date 6-11-2006 Show NESCRRC Where STURBRIDGE, MA Judge GILLISPIE, SUE Dutch 14 BOB Black SD Sharon Sartori BOS Blue SB Pam Dunning Black 4 SD Sharon Sartori Blue 7 SB Pam Dunning Gray Choc 3 JB Pam Dunning Steel Tort</p>	<p>Date 6-17-2006 Show RPOA B Where KILLEN, AL Judge DENHAM, CLAYTON Dutch 13 BOB Black JD nonmember BOS Blue JB nonmember Black 4 JD nonmember Blue 3 JD nonmember Gray 2 SB Silas & Marqe Drake Choc 2 JD Silas & Marqe Drake Steel 2 JD nonmember Tort</p>
<p>Date 6-10-2006 Show BRURBA Where REYNOLDS, IN Judge CARR, GLEN C Dutch 47 BOB Blue JD Kelly & Glenda Cummings BOS Gray SB Stanley Goegelein Black 12 JD Paul, Chris, & Megan Matthys Blue 7 JD Kelly & Glenda Cummings Gray 19 JD Stanley Goegelein Choc 2 JD Megan Case Steel 2 SB Alan Miller Tort 5 JB Kelli Slack</p>	<p>Date 6-10-2006 Show TMRC B Where SPARKS, NV Judge SZYCHULDA, CATHY Dutch 31 BOB Chocolate SB Frankie Rios BOS Steel JD nonmember Black 12 SB nonmember Blue 2 SD nonmember Gray 6 SB nonmember Choc 7 SB Frankie Rios Steel 4 SB nonmember Tort</p>	<p>Date 6-11-2006 Show FVSF Where WEYAUWEGA, WI Judge HAUSER, DAVID Dutch 41 BOB Black SB Warren Wiltman BOS Blue JD Warren Wiltman Black 7 SB Warren Wiltman Blue 9 JD Warren Wiltman Gray 3 JB Melody Stremkowski Choc 15 SB Courtney Pease Steel 2 JD Theresa M Kortbein Tort 5 SB Melody Stremkowski</p>	<p>Date 6-17-2006 Show TARBA Where ITHACA, NY Judge HREIZ, JAY Dutch 7 BOB Black JD Gail & Edward Kaiser BOS Chocolate SB Gail & Edward Kaiser Black 3 JD Gail & Edward Kaiser Blue 1 SB Gail & Edward Kaiser Gray Choc 2 SB Gail & Edward Kaiser Steel Tort 1 JD Gail & Edward Kaiser</p>
<p>Date 6-10-2006 Show NWDRC SPEC Where EVERETT, WA Judge BENGTON, ERIK ALAN Dutch 135 BOB Black JD Sarah Cleavenger BOS Steel JB Hilary Wittrock Black 24 JD Sarah Cleavenger Blue 35 SD Pete Nelsen Gray 21 SD Matt/Jill Gholden/Pfaff Choc 23 SD Tiffany & Vicki Dills Steel 5 JB Hilary Wittrock Tort 27 JD Matt/Jill Gholden/Pfaff</p>	<p>Date 6-10-2006 Show FVSF Where WEYAUWEGA, WI Judge WOOLLET, PHIL Dutch 27 BOB Tortoise SD Dan Schwandt BOS Blue SB Karen & Darrell Gates Black 7 JB Theresa M Kortbein Blue 3 JD John Milroy Gray 3 JB Theresa M Kortbein Choc 9 SB Courtney Pease Steel 2 JD Theresa M Kortbein Tort 3 SD Dan Schwandt</p>	<p>Date 6-17-2006 Show HOMRC Where CHARLOTTE, MI Judge WILSON, CARLA Dutch 32 BOB Chocolate JB Henry & Donna Carpenter BOS Blue JD Megan Gottschalk Black 5 SB nonmember Blue 14 JD Megan Gottschalk Gray 1 SB Janet Bowers Choc 8 JB Henry & Donna Carpenter Steel 3 SB Susan & Carolyn Jock Tort 1 SB Susan & Carolyn Jock</p>	<p>Date 6-17-2006 Show BRRCC Where CHARLES TOWN, WV Judge BUSTLE, ROGER Dutch 31 BOB Blue JD Ricky Wood BOS Black JB Aaron L Martin Black 8 JB Aaron L Martin Blue 8 JD Ricky Wood Gray 7 SD Aaron L Martin Choc 3 SD Aaron L Martin Steel Tort 5 JD Ricky Wood</p>
<p>Date 6-10-2006 Show FRBA A Where KALISPELL, MT Judge SHUMAKER, RANDY Dutch 7 BOB Steel SB Linda Frazier BOS Blue SD Linda Frazier Black 4 SB Linda Frazier Blue 2 SD Linda Frazier Gray Choc Steel 1 SB Linda Frazier Tort</p>	<p>Date 6-11-2006 Show LSRC Where SPENCER, IA Judge Dutch BOB BOS Black Blue Gray Choc Steel Tort</p>	<p>Date 6-17-2006 Show MDRC SPEC Where CHARLOTTE, MI Judge STEWARDSON, MARK Dutch 37 BOB Gray JB Michael Smith BOS Gray JD Edward McKinley Black 8 JD Michael Smith Blue 13 JD Megan Gottschalk Gray 8 JB Michael Smith Choc 4 SB Michael Smith Steel 2 SB Edward McKinley Tort 2 SD Edward McKinley</p>	<p>Date 6-17-2006 Show PCRBA Where RANDOLPH, OH Judge KELLER, HOWARD L Dutch 74 BOB Gray SD John Imes BOS Blue JB Penn & Sue Peters Black 17 SB Ron & Renee Russ Blue 11 SD John Imes Gray 10 SD John Imes Choc 19 JD Ron & Renee Russ Steel Tort 4 JB Ron & Renee Russ</p>
<p>Date 6-10-2006 Show FRBA B Where KALISPELL, MT Judge WEEKS, LAWRENCE LEE Dutch 7 BOB Black SB Linda Frazier BOS Blue SD Linda Frazier Black 4 SB Linda Frazier Blue 2 SD Linda Frazier Gray Choc Steel 1 SB Linda Frazier Tort</p>	<p>Date 6-11-2006 Show LSRC SPEC Where SPENCER, IA Judge BOOTS IV, HARRY Dutch 6 BOB Blue SB nonmember BOS Blue SD nonmember Black 1 JB nonmember Blue 4 SB nonmember Gray Choc Steel Tort</p>	<p>Date 6-17-2006 Show GLRCS Where CHARLOTTE, MI Judge SLACK, KELLI Dutch 51 BOB Blue SB Michael Smith BOS Blue JD Megan Gottschalk Black 11 SB Michael Smith Blue 16 SB Michael Smith Gray 10 JB Michael Smith Choc 10 JB Henry & Donna Carpenter Steel 2 SB Edward McKinley Tort</p>	<p>Date 6-17-2006 Show PCRCBA SPEC A Where RANDOLPH, OH Judge PATRICK, CATHY Dutch 69 BOB Gray JD Ron & Renee Russ BOS Steel JB Shelly Thompson Black 15 JB Ron & Renee Russ Blue 8 JB Penn & Sue Peters Gray 11 JD Ron & Renee Russ Choc Steel 12 JD Ron & Renee Russ Tort 5 SB Ron & Renee Russ</p>
<p>Date 6-10-2006 Show SRBA Where WICHITA, KS Judge VOGTS, VICTOR Dutch 31 BOB Gray SD Marvin Cole BOS Black SB Eric & Sharon Mixdorf Black 6 JD Briony Barnes Blue 8 SD Briony Barnes Gray 5 SD Marvin Cole Choc 4 JD Gary Clark Steel 3 SB Eric & Sharon Mixdorf Tort 5 SB Marvin Cole</p>	<p>Date 6-11-2006 Show NERCC Where STURBRIDGE, MA Judge COTA, ROGER Dutch 14 BOB Chocolate JB Pam Dunning BOS Black SD Sharon Sartori Black 4 SD Sharon Sartori Blue 7 SD Sharon Sartori Gray Choc 3 JB Pam Dunning Steel Tort</p>	<p>Date 6-17-2006 Show RPOA A Where KILLEN, AL Judge BURCHFIELD, DONALD Dutch 6 BOB Steel SB Silas & Marqe Drake BOS Chocolate JD Silas & Marqe Drake Black 1 JB Marqe Drake Blue Gray 2 SB Silas & Marqe Drake Choc 1 JD Silas & Marqe Drake Steel 2 SB Silas & Marqe Drake Tort</p>	<p>Date 6-17-2006 Show PCRCBA SPEC B Where RANDOLPH, OH Judge PATRICK, WILLIAM Dutch 69 BOB Black JD Ron & Renee Russ BOS Steel JB Ron & Renee Russ Black 15 JD Ron & Renee Russ Blue 8 JB Penn & Sue Peters Gray 11 SD John Imes Choc 18 SD Penn & Sue Peters Steel 12 JD Ron & Renee Russ Tort 5 SB Ron & Renee Russ</p>

Date 6-18-2006
 Show WMRBA
 Where DENMARK, ME
 Judge JURGELONIS, PAUL
 Dutch 3
 BOB Black SB Paul Jacques
 BOS Black SD Paul Jacques
 Black 3 SB Paul Jacques
 Blue
 Gray
 Choc
 Steel
 Tort

Date 6-24-2006
 Show GWRBA B
 Where POMONA, CA
 Judge SHUMAKER, RANDY
 Dutch 17
 BOB Black JD Scott Williamson
 BOS Blue JB nonmember
 Black 5 JD Scott Williamson
 Blue 5 JD Scott Williamson
 Gray
 Choc
 Steel
 Tort 7 SD Scott Williamson

Date 6-24-2006
 Show FRCOT B
 Where GALESVILLE, WI
 Judge UNDERBERG, JOSH
 Dutch 5
 BOB Steel SB Kristine & Paul Leverich
 BOS Gray SD Kristine & Paul Leverich
 Black
 Blue
 Gray 3 SD Kristine & Paul Leverich
 Choc
 Steel 2 SB Kristine & Paul Leverich
 Tort

Date 6-25-2006
 Show WSRBA
 Where KENNEWICK, WA
 Judge PELHAM, CHUCK
 Dutch 114
 BOB Black JD Sarah Cleavenger
 BOS Gray SB Hilary Wittrock
 Black 22 JD Sarah Cleavenger
 Blue 30 JD Jean Harris
 Gray 26 SB Hilary Wittrock
 Choc 18 JB Lloyd D Greag
 Steel 5 JB Hilary Wittrock
 Tort 13 JB Tiffany & Vicki Dills

Date 6-18-2006
 Show MRVRCBA
 Where URBANA, OH
 Judge
 Dutch
 BOB
 BOS
 Black
 Blue
 Gray
 Choc
 Steel
 Tort

Date 6-24-2006
 Show SCRBA A
 Where DUNCAN, OK
 Judge WESTHOFF, RUSTY
 Dutch 23
 BOB Black JD nonmember
 BOS Gray SB W H O'Haver
 Black 6 JD nonmember
 Blue 4 SB W H O'Haver
 Gray 4 SB W H O'Haver
 Choc 7 JD Jimmy R Smith
 Steel 1 SB W H O'Haver
 Tort 1 SD nonmember

Date 6-24-2006
 Show FRCOT C
 Where GALESVILLE, WI
 Judge TUNTLAND, DERECK
 Dutch 4
 BOB Black JB nonmember
 BOS Black SD nonmember
 Black 4 JB nonmember
 Blue
 Gray
 Choc
 Steel
 Tort

Date 6-26-2006
 Show PCRB
 Where OTTAWA, OH
 Judge KELLER, HOWARD L
 Dutch 3
 BOB Steel JD nonmember
 BOS Gray JB nonmember
 Black
 Blue 1 SD nonmember
 Gray 1 JB nonmember
 Choc
 Steel 1 JD nonmember
 Tort

Date 6-21-2006
 Show SDCF
 Where DEL MAR, CA
 Judge
 Dutch
 BOB
 BOS
 Black
 Blue
 Gray
 Choc
 Steel
 Tort

Date 6-24-2006
 Show SCRBA B
 Where DUNCAN, OK
 Judge VOGTS, VICTOR
 Dutch 22
 BOB Blue JD W H O'Haver
 BOS Blue JB W H O'Haver
 Black 7 SB W H O'Haver
 Blue 5 JD W H O'Haver
 Gray 4 SB W H O'Haver
 Choc 4 JD Jimmy R Smith
 Steel 1 SB W H O'Haver
 Tort 1 SD nonmember

Date 6-24-2006
 Show MCRA A
 Where TROY, OH
 Judge PATRICK, CATHY
 Dutch 16
 BOB Steel JB Shelly Thompson
 BOS Chocolate SD Shelly Thompson
 Black 3 JD Shelly Thompson
 Blue
 Gray
 Choc 10 SD Shelly Thompson
 Steel 2 JB Shelly Thompson
 Tort

Date 6-30-2006
 Show BF
 Where BROCKTON, MA
 Judge JURGELONIS, PAUL
 Dutch 26
 BOB Black SB Paul Jacques
 BOS Tortoise SD Anthony Mandile
 Black 6 SB Paul Jacques
 Blue 3 JD Paul Jacques
 Gray 5 SD nonmember
 Choc 2 SD nonmember
 Steel 5 SD Lynne S Mandile
 Tort 5 SD Anthony Mandile

Date 6-23-2006
 Show SCRBA C
 Where DUNCAN, OK
 Judge HUMPHRIES, JOSH
 Dutch 12
 BOB Blue JD W H O'Haver
 BOS Black JB W H O'Haver
 Black 4 JB W H O'Haver
 Blue 4 JD W H O'Haver
 Gray 3 JB W H O'Haver
 Choc
 Steel 1 SB W H O'Haver
 Tort

Date 6-24-2006
 Show BCF
 Where ALLISON, IA
 Judge DAPPER, ANNA
 Dutch 40
 BOB Black SB Don Dowd
 BOS Blue JD Don Van Hyfte
 Black 14 SB Don Dowd
 Blue 6 JB Thomas Smith
 Gray 6 SB Dennis & Karlene McAtee
 Choc 6 JD Thomas Smith
 Steel 6 JD Thomas Smith
 Tort 2 SB Thomas Smith

Date 6-24-2006
 Show MCRA B
 Where TROY, OH
 Judge NARAGON, TODD
 Dutch 16
 BOB Chocolate JD Shelly Thompson
 BOS Black JB nonmember
 Black 3 JB nonmember
 Blue
 Gray
 Choc 10 JD Shelly Thompson
 Steel 2 JB Shelly Thompson
 Tort 1 SD nonmember

Date 3-4-2006
 Show CMRB B
 Where GREAT FALLS, MT
 Judge CARDINAL, DAVID
 Dutch 10
 BOB Black SD Diane Nelson
 BOS Steel SB Diane Nelson
 Black 3 SD Diane Nelson
 Blue 2 JD Diane Nelson
 Gray 2 SD Diane Nelson
 Choc 1 SB John Jones
 Steel 1 SB Diane Nelson
 Tort 1 SD nonmember

Date 6-24-2006
 Show ACF
 Where PLEASANTON, CA
 Judge IRHKE, TROY
 Dutch 35
 BOB Gray JD Fran Schettler
 BOS Chocolate SB Fran Schettler
 Black 7 JD Fran Schettler
 Blue 4 SD Jim Schettler
 Gray 5 JD Fran Schettler
 Choc 11 SB Fran Schettler
 Steel
 Tort 6 SB Fran Schettler

Date 6-24-2006
 Show WSRBA
 Where KENNEWICK, WA
 Judge HOOPER, KEVIN
 Dutch 155
 BOB Black JD Sarah Cleavenger
 BOS Gray JB Russ & Janice Coffelt
 Black 41 JD Sarah Cleavenger
 Blue 37 JD Jean Harris
 Gray 29 JD Hilary Wittrock
 Choc 25 JB Autumn Dennistown
 Steel 5 JB Hilary Wittrock
 Tort

Date 6-24-2006
 Show MCRA B
 Where TROY, OH
 Judge RIDDLE, RONALD
 Dutch 34
 BOB Blue JD Alexandra Reau
 BOS Gray SB Alexandra Reau
 Black 11 SD Alexandra Reau
 Blue 4 JD Alexandra Reau
 Gray 12 SB Alexandra Reau
 Choc 3 SD Derek Branson
 Steel 3 SD Tyler Branson
 Tort 1 JB Alexandra Reau

Date 3-4-2006
 Show CMRB A
 Where GREAT FALLS, MT
 Judge KOCH, ROBERT A
 Dutch 10
 BOB Black SD Diane Nelson
 BOS Black SB John Jones
 Black 3 SD Diane Nelson
 Blue 2 JD Diane Nelson
 Gray 2 SB John Jones
 Choc 1 SB John Jones
 Steel 1 SB Diane Nelson
 Tort 1 SD nonmember

Date 6-24-2006
 Show GWRBA A
 Where POMONA, CA
 Judge KING, DOUGLAS
 Dutch 17
 BOB Blue JD Scott Williamson
 BOS Blue JB nonmember
 Black 5 JD Scott Williamson
 Blue 5 JD Scott Williamson
 Gray
 Choc
 Steel
 Tort 7 SB Scott Williamson

Date 6-24-2006
 Show FRCOT A
 Where GALESVILLE, WI
 Judge WAYNE, TIFFANY
 Dutch 4
 BOB Black JB nonmember
 BOS Black SD nonmember
 Black 4 JB nonmember
 Blue
 Gray
 Choc
 Steel
 Tort

Date 6-25-2006
 Show HENRY CO FAIR (WIRBA)
 Where CAMBRIDGE, IL
 Judge
 Dutch
 BOB
 BOS
 Black
 Blue
 Gray
 Choc
 Steel
 Tort



Youth Show Reports

Date 5-6-2006
 Show BVRA A
 Where STOCKTON, CA
 Judge MILBURN, JENNIFER
 Dutch 57
 BOB Blue SB Lauren McDevitt
 BOS Black JD nonmember
 Black 21 JD nonmember
 Blue 9 SB Lauren McDevitt
 Gray 7 JB Lauren McDevitt
 Choc 15 SB nonmember
 Steel 3 SD nonmember
 Tort 2 JD nonmember

Date 5-6-2006
 Show SCRBA
 Where HUTCHINSON, KS
 Judge KROENKE, DAVID M
 Dutch 6
 BOB Black JB nonmember
 BOS Gray JD nonmember
 Black 2 JB nonmember
 Blue 2 JD nonmember
 Gray 1 JD nonmember
 Choc
 Steel
 Tort 1 JB nonmember

Date 5-7-2006
 Show ECRBA A
 Where TOPSFIELD, MA
 Judge PLATT, ALAN
 Dutch 14
 BOB Chocolate SB nonmember
 BOS Black JD Anthony Mandile
 Black 7 JB nonmember
 Blue 1 JB nonmember
 Gray
 Choc 5 SB nonmember
 Steel 1 JD Anthony Mandile
 Tort

Date 5-13-2006
 Show SVRCBA
 Where CORRUNNA, MI
 Judge STEWARDSON, MARK
 Dutch 76
 BOB Gray SB Alexandra Reau
 BOS Black SD Alexandra Reau
 Black 26 SB Sarah & Erin Hage
 Blue 14 SB Kristy Hume
 Gray 14 SB Alexandra Reau
 Choc 9 SB Michelle Meijer
 Steel 4 SB Alexandra Reau
 Tort 9 SD Sarah & Erin Hage

Date 5-6-2006
 Show BVRA B
 Where STOCKTON, CA
 Judge ORMOND, ALLAN
 Dutch 49
 BOB Black SD Shelby Lehfeldt
 BOS Gray JB Lauren McDevitt
 Black 20 SD Shelby Lehfeldt
 Blue 8 SD Ashlee Revnon-Kadlacsik
 Gray 7 JB Lauren McDevitt
 Choc 13 JD nonmember
 Steel
 Tort 1 SB nonmember

Date 5-6-2006
 Show AWTYRCC A
 Where FAIRBAULT, MN
 Judge FRONNING, MARK
 Dutch 16
 BOB Tortoise SD Steffi Woodfill
 BOS Tortoise SB Steffi Woodfill
 Black 7 SB Steffi Woodfill
 Blue
 Gray 1 SB Joshua Collins
 Choc
 Steel
 Tort 7 SD Steffi Woodfill

Date 5-7-2006
 Show ECRBA B
 Where TOPSFIELD, MA
 Judge WAGGONER, RANDY L
 Dutch 11
 BOB Black JB nonmember
 BOS Black SD Anthony Mandile
 Black 6 JB nonmember
 Blue 1 JB nonmember
 Gray
 Choc 3 JB Anthony Mandile
 Steel 1 JD Anthony Mandile
 Tort

Date 5-13-2006
 Show LCRBA A
 Where PONTIAC, IL
 Judge GREBNER, WALTER
 Dutch 19
 BOB Steel JD Trevor Marquis
 BOS Tortoise JB Trevor Marquis
 Black 4 JD Trevor Marquis
 Blue 2 JD Trevor Marquis
 Gray 4 JD Haley Craig
 Choc
 Steel 4 JD Trevor Marquis
 Tort 5 JB Trevor Marquis

Date 5-6-2006
 Show OSRB SPEC A
 Where COLUMBUS, OH
 Judge RIDDLE, RONALD
 Dutch 71
 BOB Black JD Adrienne & Mac Gerhart
 BOS Gray JB Katie Bickelhaupt
 Black 19 JD Adrienne & Mac Gerhart
 Blue 11 SD Adrienne & Mac Gerhart
 Gray 14 JB Katie Bickelhaupt
 Choc 8 SD Suzanne Wilch
 Steel 9 JB Adrienne & Mac Gerhart
 Tort 10 SD Nathan Lohrey

Date 5-6-2006
 Show AWTYRCC B
 Where FAIRBAULT, MN
 Judge DAPPER, RUTH
 Dutch 12
 BOB Tortoise SD Steffi Woodfill
 BOS Black SB Steffi Woodfill
 Black 5 SD Steffi Woodfill
 Blue
 Gray 1 SB Joshua Collins
 Choc
 Steel
 Tort 6 SD Steffi Woodfill

Date 5-13-2006
 Show WCRBA A
 Where DELTA, CO
 Judge CONYERS, JAMES F
 Dutch 20
 BOB Chocolate SD nonmember
 BOS Black SB Nikolas Soto
 Black 2 SB Nikolas Soto
 Blue 1 SD Nikolas Soto
 Gray 3 JB nonmember
 Choc 3 SD nonmember
 Steel
 Tort 1 SB nonmember

Date 5-13-2006
 Show LCRBA B
 Where PONTIAC, IL
 Judge GEHR, RICHARD W
 Dutch 20
 BOB Steel JD Trevor Marquis
 BOS Tortoise JB Trevor Marquis
 Black 5 SD nonmember
 Blue 2 JD Trevor Marquis
 Gray 4 JB Trevor Marquis
 Choc
 Steel 4 JD Trevor Marquis
 Tort 5 JB Trevor Marquis

Date 5-6-2006
 Show OSRB SPEC B
 Where COLUMBUS, OH
 Judge VEZINO, HEATHER
 Dutch 77
 BOB Blue SD Suzanne Wilch
 BOS Black SB Suzanne Wilch
 Black 21 SB Suzanne Wilch
 Blue 12 SD Suzanne Wilch
 Gray 14 JB Katie Bickelhaupt
 Choc 9 JB Rachael Flarev
 Steel 10 SB nonmember
 Tort 11 SD Nathan Lohrey

Date 5-6-2006
 Show TCRC
 Where HUTCHINSON, KS
 Judge MICHAUD, G.D.'GARY'
 Dutch 6
 BOB Blue JD nonmember
 BOS Black JB nonmember
 Black 2 JB nonmember
 Blue 2 JD nonmember
 Gray 1 JD nonmember
 Choc
 Steel
 Tort

Date 5-13-2006
 Show WCRBA B
 Where DELTA, CO
 Judge KRAUSE, ROGER L
 Dutch 8
 BOB Gray JD nonmember
 BOS Gray JB nonmember
 Black 1 SD nonmember
 Blue
 Gray 3 JD nonmember
 Choc 3 SB nonmember
 Steel
 Tort 1 SB nonmember

Date 5-13-2006
 Show FLRBA
 Where CANANDAIGUA, NY
 Judge BROSE, HELEN
 Dutch 46
 BOB Black JD Nick Cazer
 BOS Gray SB Alexandra "Lulu" Riley
 Black 18 JD Nick Cazer
 Blue 5 SB Vanessa Brev
 Gray 9 JD Vanessa Brev
 Choc 5 SB nonmember
 Steel 3 JB Alexandra "Lulu" Riley
 Tort 6 SB Alexandra "Lulu" Riley

Date 5-6-2006
 Show HCRCA
 Where CODY, WY
 Judge CRAYTHORN, SUSAN
 Dutch 3
 BOB Black SB Nikolas Soto
 BOS Blue SD Nikolas Soto
 Black 1 SB Nikolas Soto
 Blue 1 SD Nikolas Soto
 Gray
 Choc 1 SD nonmember
 Steel
 Tort

Date 5-7-2006
 Show RCRBA
 Where RICE LAKE, WI
 Judge CHRISTEN, THERESA A
 Dutch 9
 BOB Tortoise JD nonmember
 BOS Chocolate SB nonmember
 Black 4 SD Bailey Lick
 Blue 1 JB Bailey Lick
 Gray 1 JD nonmember
 Choc 2 SB nonmember
 Steel
 Tort 1 JD nonmember

Date 5-13-2006
 Show FCRBA
 Where DELTA, CO
 Judge PEACOCK, MIKE
 Dutch 8
 BOB Gray JB nonmember
 BOS Gray JD nonmember
 Black 1 SD nonmember
 Blue
 Gray 3 JB nonmember
 Choc 3 SD nonmember
 Steel
 Tort 1 SB nonmember

Date 5-13-2006
 Show MSRP
 Where SEDALIA, MO
 Judge DICKERSON, RANDY K
 Dutch 35
 BOB Blue JD Emily Borgmann
 BOS Black SB Emily Borgmann
 Black 17 SD Emily Borgmann
 Blue 11 JD Emily Borgmann
 Gray 3 JD Kimberly & Jeffery Deutsch
 Choc 2 JB Kimberly & Jeffery Deutsch
 Steel
 Tort

Date 5-6-2006
 Show NWRB
 Where MONROE, WA
 Judge HASSENPFLUG, ROGER
 Dutch
 BOB
 BOS
 Black
 Blue
 Gray
 Choc
 Steel
 Tort

Date 5-7-2006
 Show OSRBA
 Where COLUMBUS, OH
 Judge ORMSBY, BRUCE
 Dutch 94
 BOB Black JD Adrienne & Mac Gerhart
 BOS Steel JB Cody & Danny Lape
 Black 24 JD Adrienne & Mac Gerhart
 Blue 17 SB Cody & Danny Lape
 Gray
 Choc 14 JD Cody & Danny Lape
 Steel 12 JB Cody & Danny Lape
 Tort 11 SB Nathan Lohrey

Date 5-13-2006
 Show FSRBA
 Where DELAND, FL
 Judge ???
 Dutch 6
 BOB Black JD nonmember
 BOS Gray SB nonmember
 Black 3 JD nonmember
 Blue
 Gray 2 SB nonmember
 Choc
 Steel 1 SD Jackie Neff
 Tort

Date 5-13-2006
 Show HCRBA
 Where NORWALK, OH
 Judge PATRICK, CATHY
 Dutch 11
 BOB Gray SB Katie Bickelhaupt
 BOS Gray SD Katie Bickelhaupt
 Black 5 SB Katie Bickelhaupt
 Blue
 Gray 6 SB Katie Bickelhaupt
 Choc
 Steel
 Tort

<p>Date 5-13-2006 Show RFNCO Where NORWALK, OH Judge PETRAS, RON Dutch 32 BOB Black SD Katie Bickelhaupt BOS Gray SB Katie Bickelhaupt Black 11 SD Katie Bickelhaupt Blue 7 SD Suzanne Wilch Gray 9 SB Katie Bickelhaupt Choc 5 SD Suzanne Wilch Steel Tort</p>	<p>Date 5-14-2006 Show NC4-HAB Where KENDALLVILLE, IN Judge BERGER, TOM Dutch 13 BOB Gray SB nonmember BOS Gray SD nonmember Black Blue Gray 5 SB nonmember Choc 4 SB nonmember Steel 3 SB nonmember Tort 1 SB nonmember</p>	<p>Date 5-20-2006 Show CEMRB B Where MONTGOMERY CITY, MO Judge ELLIOTT, JANIE Dutch 36 BOB Gray JD Kimberly & Jeffery Deutsch BOS Black SB Emily Borqmann Black 16 JD Emily Borqmann Blue 9 JD Emily Borqmann Gray 5 JD Kimberly & Jeffery Deutsch Choc 4 SB Kimberly & Jeffery Deutsch Steel 2 JD Kimberly & Jeffery Deutsch Tort</p>	<p>Date 5-21-2006 Show WARBA Where VASHUA, IA Judge BARNES, BRIONY Dutch 24 BOB Black SD nonmember BOS Black SB nonmember Black 4 SD nonmember Blue 6 SD nonmember Gray 6 SD nonmember Choc 5 JD nonmember Steel 2 SD nonmember Tort 1 SD nonmember</p>
<p>Date 5-13-2006 Show ??? Where HORTON, KS Judge ADDISON, CONALL Dutch 12 BOB Chocolate SB Brady Hoskins BOS Gray SD Brady Hoskins Black 2 SD Brady Hoskins Blue 3 SB Brady Hoskins Gray 4 SD Brady Hoskins Choc 3 SB Brady Hoskins Steel Tort</p>	<p>Date 5-20-2006 Show BCRCBA Where LEESPORT, PA Judge BELL, RUTH ANN Dutch 60 BOB Black SD Danette Moore BOS Steel SB nonmember Black 21 SD Danette Moore Blue Gray Choc Steel 3 SB nonmember Tort</p>	<p>Date 5-20-2006 Show SCRCB A Where CANTON, OH Judge BOGAN, KEVIN Dutch 21 BOB Gray SB Rachael Flarey BOS Chocolate JD nonmember Black 6 SB Naomi Wisniewski Blue 1 JB Naomi Wisniewski Gray 7 SB Rachael Flarey Choc 5 JD nonmember Steel 2 JD Rachael Flarey Tort</p>	<p>Date 5-21-2006 Show SCRCB B Where CANTON, OH Judge KELLER, HOWARD L Dutch 17 BOB Gray SD Katie Bickelhaupt BOS Gray SB Katie Bickelhaupt Black 7 JD Katie Bickelhaupt Blue Gray 7 SD Katie Bickelhaupt Choc 1 JB Rachael Flarey Steel 2 JD Rachael Flarey Tort</p>
<p>Date 5-13-2006 Show CCRCBA Where NORTH HAVEN, CT Judge SHAFTOE, BOB Dutch 26 BOB Chocolate JD Jasmine Wright BOS Blue JB Jasmine Wright Black 10 SD Bethany Brown Blue 5 SD Lauren & Sean Kinane Gray 5 SD Lauren & Sean Kinane Choc 3 JD Jasmine Wright Steel 2 JB Bethany Brown Tort 1 SD Lauren & Sean Kinane</p>	<p>Date 5-20-2006 Show PS Where NAVASOTA, TX Judge MCCracken, KEN Dutch 13 BOB Black JB nonmember BOS Blue SD nonmember Black 6 JB nonmember Blue 4 SD nonmember Gray 1 JD nonmember Choc Steel 2 JD nonmember Tort</p>	<p>Date 5-20-2006 Show MVRBCA Where FRANKFORT, NY Judge BELL, RUTH ANN Dutch 52 BOB Gray JD Alexandra "Lulu" Riley BOS Steel SB Harold L Smith III Black 13 SD Kassandra & Kalvin Abrams Blue 9 SB Vanessa Brey Gray 11 JD Alexandra "Lulu" Riley Choc 7 SB nonmember Steel 6 SB Harold L Smith III Tort 6 SB Alexandra "Lulu" Riley</p>	<p>Date 5-21-2006 Show SLRC SPEC Where UNION GROVE, WI Judge HAUSER, DAVID Dutch 30 BOB Steel JD Trevor Marquis BOS Tortoise JB Trevor Marquis Black 10 SD Shane Hansen Blue 1 JD Trevor Marquis Gray 7 JD nonmember Choc 2 SB Shane Hansen Steel 3 JD Trevor Marquis Tort 7 JB Trevor Marquis</p>
<p>Date 5-13-2006 Show NEDRC SPEC. Where WINDSOR LOCKS, CT Judge DELMASTRO, FRANCIS P Dutch 28 BOB Steel JB Bethany Brown BOS Gray SD Lauren & Sean Kinane Black 13 JD Jasmine Wright Blue 5 JB Jasmine Wright Gray 5 JB Jasmine Wright Choc 2 JD Jasmine Wright Steel 2 JB Bethany Brown Tort 1 SD Lauren & Sean Kinane</p>	<p>Date 5-20-2006 Show WMRBA A Where IONIA, MI Judge WOOLLET, PHIL Dutch 58 BOB Gray SB Alexandra Reau BOS Black SD Alexandra Reau Black 20 SD Alexandra Reau Blue 8 JD Alexandra Reau Gray 6 SB Alexandra Reau Choc 6 SD Michelle Meijer Steel 4 JD Alexandra Reau Tort 14 SD Alexandra Reau</p>	<p>Date 5-20-2006 Show OCRB Where FRANKFORT, NY Judge HOPPER, EVERETT Dutch 51 BOB Steel SD Caitlyn Hanlon BOS Steel SB Caitlyn Hanlon Black 13 SB Vanessa Brey Blue 9 JB Vanessa Brey Gray 10 SD Caitlyn Hanlon Choc 7 SB nonmember Steel 6 SD Caitlyn Hanlon Tort 6 SB Alexandra "Lulu" Riley</p>	<p>Date 5-21-2006 Show SLRC Where UNION GROVE, WI Judge CHRISTEN, THERESA A Dutch 35 BOB Tortoise JB Trevor Marquis BOS Tortoise JD Shane Hansen Black 10 JD Trevor Marquis Blue 3 SB nonmember Gray 8 JB nonmember Choc 3 SB nonmember Steel 3 JD Trevor Marquis Tort 8 JB Trevor Marquis</p>
<p>Date 5-14-2006 Show UMDRC SPEC Where DODGEVILLE, WI Judge WENZEL, SHERI Dutch 24 BOB Steel SB Victoria Voigt BOS Chocolate JD Victoria Voigt Black 6 SD Shane Hansen Blue 5 JB Victoria Voigt Gray 5 JD nonmember Choc 5 JD Victoria Voigt Steel 2 SB Victoria Voigt Tort 1 JD nonmember</p>	<p>Date 5-20-2006 Show WMRBA B Where IONIA, MI Judge ADAMS, MIKE Dutch 53 BOB Black SB Sarah & Erin Hage BOS Blue JD Alexandra Reau Black 12 SB Sarah & Erin Hage Blue 7 JD Alexandra Reau Gray 8 SB Alexandra Reau Choc 8 SB Michelle Meijer Steel 4 JB Alexandra Reau Tort 14 SD Sarah & Erin Hage</p>	<p>Date 5-21-2006 Show FRVRBA A Where YORKVILLE, IL Judge CARDINAL, DAVID Dutch 3 BOB Tortoise JB nonmember BOS Tortoise JD nonmember Black 1 SD nonmember Blue Gray Choc Steel Tort 2 JB nonmember</p>	<p>Date 5-27-2006 Show IRBA A Where EAU CLAIRE, WI Judge BOOTS IV, HARRY Dutch 17 BOB Chocolate SB nonmember BOS Steel SD Megan & Alyssa Reilly Black 4 SD Megan & Alyssa Reilly Blue 1 SD nonmember Gray 4 JD nonmember Choc 3 SB nonmember Steel 1 SD Megan & Alyssa Reilly Tort 4 SB nonmember</p>
<p>Date 5-14-2006 Show Swwrc Where DODGEVILLE, WI Judge CHRISTEN, THERESA A Dutch 37 BOB Black SD Shane Hansen BOS Steel SB Victoria Voigt Black 8 SD Shane Hansen Blue 6 SD Victoria Voigt Gray 5 SB Shane Hansen Choc 8 JD Victoria Voigt Steel 3 SB Victoria Voigt Tort 7 JD nonmember</p>	<p>Date 5-20-2006 Show CEMRB A Where MONTGOMERY CITY, MO Judge RICE, BRENT Dutch 36 BOB Blue SD Emily Borqmann BOS Black SB Emily Borqmann Black 16 JD Emily Borqmann Blue 9 SD Emily Borqmann Gray 5 JB Kimberly & Jeffery Deutsch Choc 4 JB Kimberly & Jeffery Deutsch Steel 2 JD Kimberly & Jeffery Deutsch Tort</p>	<p>Date 5-21-2006 Show FRVRBA B Where YORKVILLE, IL Judge SOPER, JOHN Dutch 3 BOB Tortoise JB nonmember BOS Black SD nonmember Black 1 SD nonmember Blue Gray Choc Steel Tort 2 JB nonmember</p>	<p>Date 5-27-2006 Show IRBA B Where EAU CLAIRE, WI Judge DAPPER, RUTH Dutch 15 BOB Chocolate JB Megan & Alyssa Reilly BOS Tortoise JD nonmember Black 3 SB nonmember Blue Gray 4 JB nonmember Choc 3 JB Megan & Alyssa Reilly Steel 1 SD Megan & Alyssa Reilly Tort 4 JD nonmember</p>

Date 5-27-2006
Show CSRBA A
Where BARTOW, FL
Judge LYNCH, KITTY
Dutch 15
BOB Gray JB Kevin Garrison
BOS Gray JD Kevin Garrison
Black 4 JD Bridget Graham
Blue 1 SD Kevin Garrison
Gray 5 JB Kevin Garrison
Choc
Steel 5 JB Nikki Rutledge
Tort

Date 5-27-2006
Show HCERP B
Where HUNTINGTON, IN
Judge SHUMAKER, RANDY
Dutch 40
BOB Blue JD Alexandra Reau
BOS Black JB Alexandra Reau
Black 9 SD Alexandra Reau
Blue 6 JD Alexandra Reau
Gray 7 JD Alexandra Reau
Choc 7 SD Zac & Zayne Hunter
Steel 3 JD Alexandra Reau
Tort 8 SD Alexandra Reau

Date 5-27-2006
Show KVRC
Where GARDNER, KS
Judge ELLIOTT, JANIE
Dutch 8
BOB Gray JD Karina Critten
BOS Blue SB nonmember
Black 2 JD Issac Critten
Blue 2 SB nonmember
Gray 1 JD Karina Critten
Choc 3 SB Karina Critten
Steel
Tort

Date 5-28-2006
Show HORCC
Where MT VERNON, OH
Judge WILSON, CARLA
Dutch 4
BOB Black SD nonmember
BOS Blue SB nonmember
Black 3 SD nonmember
Blue
Gray
Choc
Steel
Tort

Date 5-27-2006
Show CSRBA B
Where BARTOW, FL
Judge CUMMINGS, MARVIN L
Dutch 1
BOB Black JD nonmember
BOS
Black 1 JD nonmember
Blue
Gray
Choc
Steel
Tort

Date 5-27-2006
Show NERCA
Where HARTFORD, PA
Judge BROSE, HELEN
Dutch 56
BOB Gray SB Alexandra "Lulu" Riley
BOS Black SD Vanessa Brey
Black 16 SB Harold L. Smith III
Blue 7 SB Vanessa Brey
Gray 9 SB Alexandra "Lulu" Riley
Choc 15 SB Kevin Athey
Steel 4 SB Alexandra "Lulu" Riley
Tort 5 SB Harold L. Smith III

Date 5-28-2006
Show IRBA C
Where EAU CLAIRE, WI
Judge RICE, BRENT
Dutch 14
BOB Gray JB nonmember
BOS Tortoise JD nonmember
Black 4 SD Megan & Alyssa Reilly
Blue
Gray 4 JB nonmember
Choc 4 SB nonmember
Steel 1 SD Megan & Alyssa Reilly
Tort 1 JD nonmember

Date 5-28-2006
Show CMRBN
Where STURBRIDGE, MA
Judge BELL, RUTH ANN
Dutch 13
BOB Blue JB Jasmine Wright
BOS Tortoise SD nonmember
Black 5 JD Jasmine Wright
Blue 2 JB Jasmine Wright
Gray 3 SD Jasmine Wright
Choc 2 SB Jasmine Wright
Steel
Tort 1 SD nonmember

Date 5-27-2006
Show BTRA
Where RUSTON, LA
Judge FARROW, FRANK V
Dutch 39
BOB Blue SB Drew Patton
BOS Gray SD Cory Patton
Black 8 SB Brandon Ryland
Blue 7 SB Drew Patton
Gray 8 SD Cory Patton
Choc 6 JD Zoe Patton
Steel 3 JD Cory Patton
Tort 7 SB Levi Patton

Date 5-27-2006
Show OSDRC A SPEC
Where TIFFIN, OH
Judge ADAMS, MIKE
Dutch 108
BOB Black JD Adrienne & Mac Gerhart
BOS Steel JB Adrienne & Mac Gerhart
Black 34 JD Adrienne & Mac Gerhart
Blue 16 SD Adrienne & Mac Gerhart
Gray 15 SB Katie Bickelhaupt
Choc 20 JD Rebekah D Boqan
Steel 8 JB Adrienne & Mac Gerhart
Tort

Date 5-28-2006
Show IRBA D
Where EAU CLAIRE, WI
Judge KOCH, ROBERT A
Dutch 12
BOB Steel SD Megan & Alyssa Reilly
BOS Gray JB nonmember
Black 3 SD Megan & Alyssa Reilly
Blue
Gray 4 JD nonmember
Choc 3 SD Megan & Alyssa Reilly
Steel 1 SD Megan & Alyssa Reilly
Tort 1 JD nonmember

Date 5-28-2006
Show WBRC C
Where HUTCHINSON, MN
Judge CHRISTEN, THERESA A
Dutch 11
BOB Black SD Brandon Moe
BOS Blue SB Brandon Moe
Black 3 SD Brandon Moe
Blue 5 SD Brandon Moe
Gray 1 SB Joshua Collins
Choc
Steel
Tort 1 SD Brandon Moe

Date 5-27-2006
Show ALTRC
Where RUSTON, LA
Judge LAWRENCE, ROBERT
Dutch 38
BOB Blue SB Drew Patton
BOS Gray SD Brandon Ryland
Black 8 JD Drew Patton
Blue 7 SB Drew Patton
Gray 8 SB Cory Patton
Choc 6 JD Zoe Patton
Steel 2 SB Cory Patton
Tort 7 SB Zoe Patton

Date 5-27-2006
Show OSDRC B SPEC
Where TIFFIN, OH
Judge D'AMICO, MIKE
Dutch 101
BOB Black JD Adrienne & Mac Gerhart
BOS Black SB Cody & Danny Lape
Black 32 JD Adrienne & Mac Gerhart
Blue 14 JB Adrienne & Mac Gerhart
Gray 13 JD Suzanne Wilch
Choc 19 JD Cody & Danny Lape
Steel 8 JD Adrienne & Mac Gerhart
Tort 15 SD Sarah & Erin Hage

Date 5-28-2006
Show HCERP C
Where HUNTINGTON, IN
Judge YOUNG, MICHAEL D
Dutch 30
BOB Blue JD Alexandra Reau
BOS
Black 6 SD Alexandra Reau
Blue 5 JD Alexandra Reau
Gray 6 SB Alexandra Reau
Choc 4 SD Zac & Zayne Hunter
Steel 3 SB Alexandra Reau
Tort 6 SD Alexandra Reau

Date 5-28-2006
Show WBRC D
Where HUTCHINSON, MN
Judge HAUSER, DAVID
Dutch 11
BOB Blue SB Brandon Moe
BOS Black SD Brandon Moe
Black 3 SD Brandon Moe
Blue 5 SB Brandon Moe
Gray 1 SB Joshua Collins
Choc 1 JD Brandon Moe
Steel
Tort 1 SD Brandon Moe

Date 5-27-2006
Show NLRA
Where RUSTON, LA
Judge BANKS, ROGER
Dutch 39
BOB Gray JB nonmember
BOS Black JD Drew Patton
Black 8 JD Drew Patton
Blue 7 SB Drew Patton
Gray 8 JB nonmember
Choc 6 JD Zoe Patton
Steel 3 SB Cory Patton
Tort 7 SB Zoe Patton

Date 5-27-2006
Show WBRC A
Where HUTCHINSON, MN
Judge THOMAS, TONNA
Dutch 22
BOB Black JD Steffi Woodfill
BOS Tortoise SB Steffi Woodfill
Black 9 JD Steffi Woodfill
Blue 6 SD Brandon Moe
Gray 2 JD Steffi Woodfill
Choc
Steel
Tort 5 SB Steffi Woodfill

Date 5-28-2006
Show HCERP D
Where HUNTINGTON, IN
Judge CUNNINGHAM, KYLE
Dutch 29
BOB Steel SB Alexandra Reau
BOS Blue JD Alexandra Reau
Black 5 JD Alexandra Reau
Blue
Gray 6 SB Alexandra Reau
Choc 4 SD Zac & Zayne Hunter
Steel 3 SB Alexandra Reau
Tort 6 SD Alexandra Reau

Date 6-3-2006
Show
Where DELAND, FL
Judge BREWER, RAYMOND
Dutch 10
BOB Blue SD Kevin Garrison
BOS Gray SB Dylan Rutledge
Black 1 JD Bridget Graham
Blue 1 SD Kevin Garrison
Gray 4 SB Dylan Rutledge
Choc
Steel 4 SD Kevin Garrison
Tort

Date 5-27-2006
Show HCERP A
Where HUNTINGTON, IN
Judge HARTZELL, BRIAN
Dutch 46
BOB Black JD Sarah Correll
BOS Gray SB Alexandra Reau
Black 11 JD Sarah Correll
Blue
Gray 7 SB Alexandra Reau
Choc 9 SD Zac & Zayne Hunter
Steel 3 SB Alexandra Reau
Tort 10 SD Alexandra Reau

Date 5-27-2006
Show WBRC B
Where HUTCHINSON, MN
Judge GRIMM, JOHN
Dutch 17
BOB Black JD Steffi Woodfill
BOS Tortoise SB Steffi Woodfill
Black 7 JD Steffi Woodfill
Blue 5 SD Brandon Moe
Gray 1 JD Steffi Woodfill
Choc
Steel
Tort 4 SB Steffi Woodfill

Date 5-28-2006
Show KCRCA
Where MT VERNON, OH
Judge COLLINS, J LEO
Dutch 4
BOB Black SD nonmember
BOS Black SB nonmember
Black 2 SD nonmember
Blue 2 SB nonmember
Gray
Choc
Steel
Tort

Date 6-3-2006
Show OHR
Where STELLA, MO
Judge VOGTS, VICTOR
Dutch 9
BOB Gray JD Karina Critten
BOS Chocolate SB Karina Critten
Black 3 JD Issac Critten
Blue
Gray 1 JD Karina Critten
Choc 2 SB Karina Critten
Steel
Tort 2 JD nonmember

Date 6-3-2006
 Show IHRCB
 Where OSKALOOSA, IA
 Judge DICKERSON, RANDY K
 Dutch 25
 BOB Steel SD Jacob & Joseph Harden
 BOS Tortoise SB nonmember
 Black 6 JB Jacob & Joseph Harden
 Blue 3 SB Jacob & Joseph Harden
 Gray 4 SD Jacob & Joseph Harden
 Choc 5 JD nonmember
 Steel 4 SD Jacob & Joseph Harden
 Tort 3 SB nonmember

Date 6-4-2006
 Show CRBA
 Where NORTH HAVEN, CT
 Judge NARAGON, TODD
 Dutch 14
 BOB Gray SD Lauren & Sean Kinane
 BOS Blue JB Jasmine Wright
 Black 3 JD Jasmine Wright
 Blue 2 JB Jasmine Wright
 Gray 5 SD Lauren & Sean Kinane
 Choc 2 SD Jasmine Wright
 Steel 1 SB Lauren & Sean Kinane
 Tort 1 SD Lauren & Sean Kinane

Date 6-10-2006
 Show NWDRC SPEC
 Where EVERETT, WA
 Judge BENGTSO, ERIK ALAN
 Dutch 15
 BOB Black JD Autumn Dennistown
 BOS Chocolate JB Autumn Dennistown
 Black 10 JD Autumn Dennistown
 Blue 1 JD nonmember
 Gray
 Choc 4 JB Autumn Dennistown
 Steel
 Tort

Date 6-11-2006
 Show FVFS
 Where WEYAUWEGA, WI
 Judge UNDERBERG, JOSH
 Dutch 25
 BOB Black SD Bailey Lick
 BOS Blue SB
 Black 8 SD Bailey Lick
 Blue 4 SB
 Gray 5 JD nonmember
 Choc 3 SB nonmember
 Steel 1 SD Megan & Alyssa Reilly
 Tort 4 SD nonmember

Date 6-3-2006
 Show PPRBA A
 Where KIOWA, CO
 Judge CRAYTHORN, NEAL
 Dutch 10
 BOB Black SB nonmember
 BOS Gray JD nonmember
 Black 3 SB nonmember
 Blue 2 SB nonmember
 Gray 3 JD nonmember
 Choc 2 SD nonmember
 Steel
 Tort

Date 6-4-2006
 Show IRBA A
 Where CRESCENT CITY, IL
 Judge MAUCK, RONALD D
 Dutch 19
 BOB Tortoise SB Trevor Marquis
 BOS Tortoise JD Zachary Gerling
 Black 8 JD Renee Gerling
 Blue 1 JD Trevor Marquis
 Gray 2 JB Trevor Marquis
 Choc 1 SB Renee Gerling
 Steel 4 JD Trevor Marquis
 Tort 3 SB Trevor Marquis

Date 6-10-2006
 Show SRBA
 Where WICHITA, KS
 Judge VOGTS, VICTOR
 Dutch 13
 BOB Steel JB nonmember
 BOS Blue JD nonmember
 Black 2 JB nonmember
 Blue 7 JD nonmember
 Gray 2 SD nonmember
 Choc 1 JB nonmember
 Steel 1 JB nonmember
 Tort

Date 6-17-2006
 Show HOMRC
 Where CHARLOTTE, MI
 Judge RAISOR JR, GEORGE M
 Dutch 70
 BOB Black SB Sarah & Erin Hage
 BOS Tortoise SD Sarah & Erin Hage
 Black 22 SB Sarah & Erin Hage
 Blue 16 SB Kristy Hume
 Gray 13 JD Kristy Hume
 Choc 4 JD nonmember
 Steel 7 JD Alexandra Reau
 Tort 8 SD Sarah & Erin Hage

Date 6-3-2006
 Show PPRBA B
 Where KIOWA, CO
 Judge REZAC, RUBY
 Dutch 10
 BOB Black SB nonmember
 BOS Chocolate SD nonmember
 Black 3 SB nonmember
 Blue 2 SB nonmember
 Gray 3 JD nonmember
 Choc 2 SD nonmember
 Steel
 Tort

Date 6-4-2006
 Show IRBA B
 Where CRESCENT CITY, IL
 Judge GEHR, RICHARD W
 Dutch 19
 BOB Steel JD Trevor Marquis
 BOS Steel JB Trevor Marquis
 Black 8 JD Trevor Marquis
 Blue 1 JD Trevor Marquis
 Gray 2 JB Trevor Marquis
 Choc 1 SB Renee Gerling
 Steel 4 JD Trevor Marquis
 Tort 3 SB Trevor Marquis

Date 6-10-2006
 Show FVFS
 Where WEYAUWEGA, WI
 Judge KOCH, ROBERT A
 Dutch 39
 BOB Steel SD Megan & Alyssa Reilly
 BOS Gray JB nonmember
 Black 11 SD Shane Hansen
 Blue 6 SD nonmember
 Gray 7 SD Shane Hansen
 Choc 8 SB nonmember
 Steel 2 SD Megan & Alyssa Reilly
 Tort 5 SD nonmember

Date 6-17-2006
 Show MDRS SPEC
 Where CHARLOTTE, MI
 Judge RICHTER, JOHN
 Dutch 55
 BOB Black SD Kristy Hume
 BOS Blue SB Kristy Hume
 Black 17 SD Kristy Hume
 Blue 12 SD Kristy Hume
 Gray 13 SD Sarah & Erin Hage
 Choc 3 JB Anna DeKohenck
 Steel 4 JD Alexandra Reau
 Tort 6 SB Sarah & Erin Hage

Date 6-3-2006
 Show KDC SPEC
 Where WICHITA, KS
 Judge KROENKE, DAVID M
 Dutch 21
 BOB Blue SD Brady Hoskins
 BOS Chocolate SB Brady Hoskins
 Black 4 SB Brady Hoskins
 Blue 6 SD Brady Hoskins
 Gray 4 SD Brady Hoskins
 Choc 5 SB Brady Hoskins
 Steel
 Tort 1 JB nonmember

Date 6-10-2006
 Show BCRBA
 Where ITHACA, NY
 Judge BROSE, HELEN
 Dutch 45
 BOB Gray SB Alexandra "Lulu" Riley
 BOS Gray SD Vanessa Brey
 Black 13 JD Nick Cazer
 Blue 8 SD Harold L Smith III
 Gray 9 SB Alexandra "Lulu" Riley
 Choc 5 SB nonmember
 Steel 4 JB Alexandra "Lulu" Riley
 Tort 6 SB Harold L Smith III

Date 6-11-2006
 Show LSRC
 Where SPENCER, IA
 Judge WAYNE, TIFFANY
 Dutch 23
 BOB Blue SD nonmember
 BOS Black JB nonmember
 Black 3 SD nonmember
 Blue 12 SD nonmember
 Gray 5 SB nonmember
 Choc 2 SD nonmember
 Steel 1 SB nonmember
 Tort

Date 6-17-2006
 Show GLRCS
 Where CHARLOTTE, MI
 Judge ADAMS, MIKE
 Dutch 29
 BOB Black SD Alexandra Reau
 BOS Gray JB Alexandra Reau
 Black 12 SD Alexandra Reau
 Blue 8 JD Alexandra Reau
 Gray 5 JB Alexandra Reau
 Choc 1 SB nonmember
 Steel 3 JB Alexandra Reau
 Tort

Date 6-4-2006
 Show CPRBA
 Where STATE COLLEGE, PA
 Judge RIDDLE, RONALD
 Dutch 43
 BOB Steel SB nonmember
 BOS Black SD Danette Moore
 Black 16 SD Danette Moore
 Blue 2 SD Sherry Moore
 Gray 3 SB nonmember
 Choc 21 SD Kevin Athey
 Steel 1 SB nonmember
 Tort

Date 6-10-2006
 Show HDRF SPEC
 Where REYNOLDS, IN
 Judge BERGER, TOM
 Dutch 30
 BOB Black SD Sarah Correll
 BOS
 Black 12 SD Sarah Correll
 Blue 2 SD Sarah Correll
 Gray 3 JD nonmember
 Choc 7 SB Sarah Correll
 Steel 4 SD nonmember
 Tort 2 SB nonmember

Date 6-11-2006
 Show NERCC
 Where STURBRIDGE, MA
 Judge COTA, ROGER
 Dutch 22
 BOB Blue JB nonmember
 BOS Gray SD Jasmine Wright
 Black 10 SD Jasmine Wright
 Blue 2 JB nonmember
 Gray 3 SD Jasmine Wright
 Choc 4 SB Anthony Mandile
 Steel 1 JD Anthony Mandile
 Tort 2 SD Anthony Mandile

Date 6-17-2006
 Show TARBA
 Where CORTLAND, NY
 Judge VECCHIO, DEBORAH
 Dutch 53
 BOB Gray SD Vanessa Brey
 BOS Tortoise JB Harold L Smith III
 Black 12 JD Caitlyn Hanlon
 Blue 9 SD Caitlyn Hanlon
 Gray 11 SD Vanessa Brey
 Choc 7 SD Cassandra & Kalvin Abrams
 Steel 7 JB Alexandra "Lulu" Riley
 Tort 7 JB Harold L Smith III

Date 6-4-2006
 Show TCRCOP
 Where STATE COLLEGE, PA
 Judge RIZZO, SAM
 Dutch 24
 BOB Chocolate SB Kevin Athey
 BOS Chocolate SD Kevin Athey
 Black 6 SD Cassandra & Kalvin Abrams
 Blue
 Gray
 Choc 18 SB Kevin Athey
 Steel
 Tort

Date 6-10-2006
 Show BRURBA
 Where REYNOLDS, IN
 Judge THOMAS, TONNA
 Dutch 33
 BOB Steel JD Trevor Marquis
 BOS Steel JB Trevor Marquis
 Black 16 JD Trevor Marquis
 Blue 3 JD Trevor Marquis
 Gray 4 JB nonmember
 Choc 1 SD Sarah Correll
 Steel 7 JD Trevor Marquis
 Tort

Date 6-11-2006
 Show NESRC
 Where STURBRIDGE, MA
 Judge GILLISPIE, SUE
 Dutch 22
 BOB Blue JB Jasmine Wright
 BOS Gray SD Jasmine Wright
 Black 10 SD Jasmine Wright
 Blue 2 JB Jasmine Wright
 Gray 3 SD Jasmine Wright
 Choc 4 JD Anthony Mandile
 Steel 1 JD Anthony Mandile
 Tort 2 SD nonmember

Date 6-17-2006
 Show BRRCC
 Where CHARLES TOWN, WV
 Judge BUSTLE, ROGER
 Dutch 29
 BOB Tortoise JB Scott Sustersich
 BOS Chocolate SD Kevin Athey
 Black 4 SB Kevin Athey
 Blue
 Gray
 Choc 15 SB Kevin Athey
 Steel
 Tort 10 JB Scott Sustersich

Date 6-17-2006
Show PCRCBA
Where RANDOLPH, OH
Judge KELLER, HOWARD L
Dutch 26
BOB Gray JB Katie Bickelhaupt
BOS Black SD Jesse Kubick
Black 8 SD Jesse Kubick
Blue 5 JB Kyle Schreiber
Gray 9 JB Katie Bickelhaupt
Choc 1 JB Rachael Flarey
Steel 3 JD Jesse Kubick
Tort

Date 6-17-2006
Show PCRCBA SPEC A
Where RANDOLPH, OH
Judge PATRICK, CATHY
Dutch 48
BOB Steel JB Cody & Danny Lape
BOS Chocolate SD Cody & Danny Lape
Black
Blue 6 SD Suzanne Wilch
Gray 16 SD Suzanne Wilch
Choc 9 SD Cody & Danny Lape
Steel 4 JB Cody & Danny Lape
Tort

Date 6-17-2006
Show PCRCBA SPEC B
Where RANDOLPH, OH
Judge PATRICK, WILLIAM
Dutch 48
BOB Black SD Suzanne Wilch
BOS Gray SB Naomi Wisniewski
Black 13 SD Suzanne Wilch
Blue 6 SD Suzanne Wilch
Gray 16 SB Naomi Wisniewski
Choc 9 SD Cody & Danny Lape
Steel 4 JB Cody & Danny Lape
Tort

Date 6-18-2006
Show IRBA C
Where GRAND RAPIDS, MN
Judge FRONNIG, MARK
Dutch 16
BOB Black SD Steffi Woodfill
BOS Blue SB Brandon Moe
Black 6 SD Steffi Woodfill
Blue 4 SD Brandon Moe
Gray 2 SB nonmember
Choc 1 JB Brandon Moe
Steel
Tort 3 SD Steffi Woodfill

Date 6-18-2006
Show IRBA D
Where GRAND RAPIDS, MN
Judge MARSHALL, JOEL
Dutch 15
BOB Black SD Steffi Woodfill
BOS Tortoise SB Steffi Woodfill
Black 6 SD Steffi Woodfill
Blue 4 SD Brandon Moe
Gray 1 JB nonmember
Choc 1 JB Brandon Moe
Steel
Tort 3 SD Steffi Woodfill

Date 6-18-2006
Show NERF
Where WESTFIELD, MA
Judge RIZZO, SAM
Dutch 10
BOB Gray SB Jasmine Wright
BOS Black SD Jasmine Wright
Black 3 SD Jasmine Wright
Blue 1 JB Jasmine Wright
Gray 3 SB Jasmine Wright
Choc 2 SB Jasmine Wright
Steel
Tort 1 SB nonmember

Date 6-18-2006
Show MRVRCBA
Where URBANA, OH
Judge HARTZELL, BRIAN
Dutch 33
BOB Black JB Rachel Routzonq
BOS Tortoise SD Nathan Lohrey
Black 9 JB Rachel Routzonq
Blue 8 SD nonmember
Gray 5 JB Rachel Routzonq
Choc 1 SD Derek Branson
Steel
Tort 10 SD Nathan Lohrey

Date 6-21-2006
Show SDCF
Where DEL MAR, CA
Judge MILBURN, JENNIFER
Dutch 14
BOB Blue JB nonmember
BOS Blue SD nonmember
Black 3 SB nonmember
Blue 5 JB nonmember
Gray
Choc 4 JD nonmember
Steel 2 SB nonmember
Tort

Date 6-23-2006
Show SCRBA C
Where DUNCAN, OK
Judge CALDWELL, ROBERT A
Dutch 22
BOB Black JB Rachel Tackett
BOS Tortoise JD Rachel Tackett
Black 4 JB Rachel Tackett
Blue 2 JB nonmember
Gray 5 JB Rachel Tackett
Choc 4 SD nonmember
Steel 3 JB Rachel Tackett
Tort 4 JD Rachel Tackett

Date 6-24-2006
Show GWRBA A
Where POMONA, CA
Judge MILBURN, JENNIFER
Dutch 10
BOB Black JB Tracy Albertoni
BOS Blue SD Tracy Albertoni
Black 1 JB Tracy Albertoni
Blue 3 SD Tracy Albertoni
Gray
Choc 5 JB Tracy Albertoni
Steel
Tort 1 SB Tracy Albertoni

Date 6-24-2006
Show GWRBA B
Where POMONA, CA
Judge SWANSON, RICHARD
Dutch 10
BOB Chocolate JB Tracy Albertoni
BOS Blue JD Tracy Albertoni
Black 1 JD Tracy Albertoni
Blue 3 JB Tracy Albertoni
Gray
Choc 5 JB Tracy Albertoni
Steel
Tort 1 SB Tracy Albertoni

Date 6-24-2006
Show SCRBA A
Where DUNCAN, OK
Judge VOGTS, VICTOR
Dutch 20
BOB Black JB Rachel Tackett
BOS Black JD nonmember
Black 5 JB Rachel Tackett
Blue 2 SD nonmember
Gray 5 JD nonmember
Choc 4 SD nonmember
Steel 1 SB nonmember
Tort 3 JD Rachel Tackett

Date 6-24-2006
Show SCRBA B
Where DUNCAN, OK
Judge ARMSTRONG, BRIGETTE
Dutch 20
BOB Black JD nonmember
BOS Gray JB Rachel Tackett
Black 5 JD nonmember
Blue 1 JB nonmember
Gray 5 JB Rachel Tackett
Choc 4 SB nonmember
Steel 2 SB nonmember
Tort 3 JD Rachel Tackett

Date 6-24-2006
Show BCF
Where ALLISON, IA
Judge GRIMM, JOHN
Dutch 41
BOB Blue SD nonmember
BOS Blue SB nonmember
Black 10 SD nonmember
Blue 13 SD nonmember
Gray 10 SD nonmember
Choc 3 JB nonmember
Steel 4 SD nonmember
Tort 1 SD nonmember

Date 6-24-2006
Show FRCOT A
Where GALESVILLE, WI
Judge TUNTLAND, DERECK
Dutch 13
BOB Gray JD nonmember
BOS Tortoise SB nonmember
Black 1 SB nonmember
Blue
Gray 3 JD nonmember
Choc 1 SB nonmember
Steel 1 SD Megan & Alyssa Reilly
Tort 7 SD nonmember

Date 6-24-2006
Show FRCOT B
Where GALESVILLE, WI
Judge WAYNE, TIFFANY
Dutch 151
BOB Gray JD nonmember
BOS Gray JB nonmember
Black
Blue
Gray 3 JD nonmember
Choc 1 SB nonmember
Steel 1 SD Megan & Alyssa Reilly
Tort 9 SD nonmember

Date 6-24-2006
Show FRCOT C
Where GALESVILLE, WI
Judge UNDERBERG, JOSH
Dutch 12
BOB Gray JD nonmember
BOS Gray JB nonmember
Black 1 SB nonmember
Blue
Gray 3 JD nonmember
Choc 3 JD nonmember
Steel 1 SD Megan & Alyssa Reilly
Tort 4 SD nonmember

Date 6-24-2006
Show MCRA A
Where TROY, OH
Judge PETRAS, RON
Dutch 20
BOB Gray SB Alexandra Reau
BOS Black JD Alexandra Reau
Black 6 JD Alexandra Reau
Blue 3 JD Alexandra Reau
Gray 6 SB Alexandra Reau
Choc 2 SB Alexandra Reau
Steel 2 JD Alexandra Reau
Tort 1 JB Alexandra Reau

Date 6-25-2006
Show HENRY CO FAIR (WIRBA)
Where CAMBRIDGE, IL
Judge GEHR, RICHARD W
Dutch 6
BOB Tortoise JD nonmember
BOS Tortoise SB nonmember
Black 1 SB nonmember
Blue 1 SB nonmember
Gray
Choc 2 JD nonmember
Steel
Tort 2 JD nonmember

Date 6-25-2006
Show WSRBA
Where KENNEWICK, WA
Judge GILLISPIE, GENE
Dutch 31
BOB Black SB nonmember
BOS Black JD Autumn Dennistown
Black 14 SB nonmember
Blue 9 SB Jobin Reed
Gray 3 SB nonmember
Choc 4 JB Autumn Dennistown
Steel
Tort 1 JB Jobin Reed

Date 6-25-2006
Show PCRB
Where OTTAWA, OH
Judge KELLER, HOWARD L
Dutch 8
BOB Chocolate JD nonmember
BOS Chocolate SB nonmember
Black 3 SB nonmember
Blue 2 JD nonmember
Gray
Choc 3 JD nonmember
Steel
Tort

Date 6-30-2006
Show ACF
Where PLEASANTON, CA
Judge LUGO, JOE A
Dutch 7
BOB Black SD nonmember
BOS Chocolate SB Makayla Beauchamp
Black 1 SD nonmember
Blue 1 SD nonmember
Gray 2 SD nonmember
Choc 2 SB Makayla Beauchamp
Steel
Tort 1 SD nonmember

Date 6-30-2006
Show BF
Where BROCKTON, MA
Judge BENOIT, LINDSAY
Dutch 10
BOB Black SD Anthony Mandile
BOS Chocolate SB Anthony Mandile
Black 4 SD Anthony Mandile
Blue 3 SB Anthony Mandile
Gray
Choc 3 SB Anthony Mandile
Steel
Tort

Date 3-18-2006
Show BB4-HRCC B
Where HAMBURG, PA
Judge KRAUS, FREDA
Dutch 35
BOB Chocolate JB Kevin Athey
BOS Chocolate SD Kevin Athey
Black 16 JB Kevin Athey
Blue
Gray
Choc 18 JB Kevin Athey
Steel
Tort 1 SD Kevin Athey



2006 ARBA Convention

Open Seller's Class

Place	Ear #	Variety	Sex	Jr/Sr	Seller	Buyer	Price
1	632	Black	D	Jr	Karen/Darrell/Tony Gates	Hilary Wittrock	\$105.00
2	PS4	Blue	D	Jr	Scott Williamson	Pete Nelsen	\$160.00
3	P6TV	Blue	D	Jr	Jill Pfaff/Matt Gholden	Pete Nelsen	\$105.00
4	S650	Tort	D	Jr	Dan Schwandt	Mystina Swaim	\$80.00
5	628	Black	D	Jr	Karen/Darrell/Tony Gates	Lorette Lang	\$150.00
NP	MS1	Steel	B	Jr	Amanda Klepps	Jill Pfaff	\$20.00
NP	K609	Steel	D	Jr	Theresa Kortbein	Mystina Swaim	\$55.00
NP	654H	Black	D	Jr	Eric & Sharon Mixdorf	McCurry Family	\$55.00
NP	S608	Tort	B	Sr	Dan Schwandt	Jeff Tackett	\$30.00
NP	BONIE	Blue	D	Sr	McCurry Family	Amanda Klepps	\$45.00
NP	6W6	Blue	D	Sr	Bob Bergene	Laura Watson	\$125.00
NP	PBJ7	Tort	B	Sr	Steve & Sherry Patton	Charles May	\$45.00
Total Sales							\$975.00
Total to ADRC							\$487.50

Youth Seller's Class

Place	Ear #	Variety	Sex	Jr/Sr	Seller	Buyer	Price
1	DBF2	Blue	D	Sr	Drew Patton	Josh Humphries	\$30.00
2	SR79	Black	D	Jr	Kristy Hume	Jeff Tackett	\$30.00
3	CDS1	Gray	B	Sr	Cory Patton	Jeff Tackett	\$25.00
4	R211	Tort	B	Sr	Rachel Zimdars	Dan Schwandt	\$30.00
5	WL	Blue	B	Jr	Kelly Burkharadt	No Sale	\$0.00
NP	DDT2	Black	B	Jr	Kelly Burkharadt	Rebekka Robledo	\$30.00
Total Sales							\$145.00
Total to ADRC							\$72.50

Total to ADRC from Seller's Class \$560.00

Thank you to all of the Sellers and Buyers!

AMERICAN DUTCH RABBIT CLUB HALL OF FAME MEMBERS

Inducted at Greenville, OH 1996

Al Butler	Stan Goeglein	George Parmer
Barb Butler	Norma Hart	Jack Pugh
Bill Geitzenauer	Anthony Micallef	Jack Wireman

Inducted at Greenville, OH 1997

Andy Barton	Roger Eich
-------------	------------

Inducted at Hutchinson, KS 1998

Doreen Bengtson	Larry Bengtson
Wenton Carlton	Wayne MacKinnon

Inducted at Oshkosh, WI 1999

Roger Guetschow	Lynn Shaw
-----------------	-----------

Inducted at York, PA 2000

Alan Miller	Mike Stinehelfer
-------------	------------------

Inducted at Springfield, IL 2001

Maxine Parmer	Reggie Shull
---------------	--------------

Inducted at Washington, PA 2003

John Imes	Ed McKinley	Robert Worden
-----------	-------------	---------------

Inducted at Greenville, OH 2004

Larry Thompson	Wilbur Williamson
----------------	-------------------

Inducted at Manitowoc, WI 2005

Fred Mullinax	Scott Williamson
---------------	------------------

Inducted at Washington, PA 2006

Tom Dietrich	Kevin Hooper
--------------	--------------

AMERICAN DUTCH RABBIT CLUB SHOW SANCTION REQUEST

Send all sanction request with payment to:

Jill Pfaff
 263 NE Byron Place
 Corvallis, OR 97330
 Ph: (541) 753-0128
 Cell: (541) 207-7196
 adrceansanctions@yahoo.com

Sanction Fees:

Open \$9.00

Youth \$6.00

Apply at least 60 days in advance of show date.

(NOTE: Fees will be double for any sanction applied for less than 30 days prior to the show date.

Show Date _____ Show Location _____

Open ARBA sanction number _____ Youth ARBA sanction number _____

Sponsoring Club _____

Secretary Name _____

Address _____

City _____ State _____ Zip _____

Phone: _____ Email: _____

ADRC PUBLICITY ORDER FORM

ITEM	COLOR	SIZE	PRICE
Apron	Kaki or Denim		\$15.00
Arm Patches	Blue or Chocolate		\$4.50
Dutch Lapel Pin	Black, Blue, Chocolate, Tortoise		\$2.50
T-shirt youth	Blue or Pink	Small, Medium, Large	\$8.00
T-shirt adult	White, Natural, Ash, Sage	Small, Medium, Large, X-Large	\$12.50
Long Sleeve Gray Polo	Gray	Medium, Large, X-Large	\$25.00
Long Sleeve Maroon Polo	Maroon	Small, Medium, Large, X-Large	\$32.50
Sweatshirt	Red or Ash	Small, Medium, Large, X-Large	\$22.50
Full Color Dutch Poster			\$5.00

Please email Angie before ordering so she can tell you of availability on items.

Send order to: (include your name, address, city, state, zip, phone# and email)

Angie Aisbet
 211 Lawndale Ave
 Slinger, WI 53086
 Ph: 262-644-6367
 rabbitsrus@nconnect.net

Sub-Total	
15% handling fee	
TOTAL	
# Items ordered	

MEMBERSHIP APPLICATION
American Dutch Rabbit Club

Send to:

Barb Kline Secretary / Treasurer
4664 S. C. Rd 591
New Riegel, OH 44853
419-595-2050
ADRCSecretary@aol.com



Yearly Dues:

Youth Membership	\$8.00	_____
Single Membership	\$10.00	_____
Husband / Wife	\$14.00	_____
Family	\$20.00	_____

I hereby make application for membership in the American Dutch Rabbit Club. I agree to abide by your Constitution and By-Laws to further the interest of the American Dutch Rabbit in every way possible.

Print Name: _____

E-mail: _____

Birth Date: _____

Youth name(s) and birth date(s) for family membership:

Street Address _____

City: _____ State _____ Zip _____

Phone _____

Renewal _____ New _____ Recommended by _____

Canadian Memberships must add an additional \$5.00 to cover mailing expenses. Foreign memberships must add an additional \$8.00 to cover mailing expenses. All fees must be in US funds. If you want your Dutch Reporter sent to you First Class, please add \$7.00.

WALDEN ACRES

William C. Henley, III

Kennard E. Henley

1730 Walden Court
Englewood, Florida 34224

(941) 474-3139

Facsimile: (941) 473-1249

e-mail: WaldenAcres@hotmail.com



"Hoppin' Excellence"



Dutch - Chocolate & Black Varieties
Quality Pedigrees - Proven Show Winners



03/07

12/06

PETERS' RABBITS



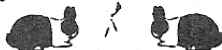
Black, Blue & Chocolate

Penn & Sue Peters
129 Apple Meadow Lane
Morgantown, WV 26508

(304) 291-0111

PENNSUE2@AOL.COM

Megan's Dutch Hutch



Specializing in Black, Blue, Chocolate, & Gray

4664 S. Co. Rd. 591
New Riegel, OH 44853
419-595-2050

KlineDutch@aol.com
Dennis, Barb & Megan Kline
ARBA Registrar RR386

2005 Best Display NDS - Open
2004 BOB NDS-Open
2003-2004 Overall Sweepstakes-Open
1999-2002 Overall Sweepstakes-Youth
2002 Best Sr. Overall NDS-Youth
2001 BOS NDS-Youth
1999 BOB ARBA-Youth

12/06

STONE RIDGE RABBITRY

DUTCH

MINI LOPS



2003 BOS ARBA CONV. - YOUTH
BEST TORTOISE DISPLAY YOUTH
BOV CHOCOLATE-YOUTH
BOV BLUE - YOUTH
BOSV TORTOISE-YOUTH
BOSV STEEL - YOUTH
BOSV GRAY - YOUTH

Katie & Dr. Vickie Spellmire
12987 Moulton-New Knoxville Rd.
Wapakoneta, Ohio 45895
(419) 753-2723
spellmire@nktelco.net



12/06

HAY DAY HILLS

Quality Dutch:
Blacks, Blues, & Torts

Kelli Slack



1022 W 1300 N
N Manchester, IN 46962
(260)982-8714

1924 W 500 N
W Lafayette, IN 47906
(765)497-1294

6/06

krisdutch@aol.com

Dutch Haven Rabbitry

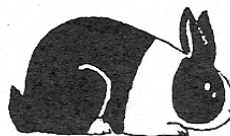
Sue & Emily Strandwitz

8495 Co G

Verona, WI 53593

(608) 832-1579

Bunnisoo@aol.com



Black

Blue

Chocolate

Tortoise

12/06

PRSRT STD
U.S. Postage
PAID
PERMIT # 211
Winona, MN



*May your
days
be merry
and bright*

D U T C H

SEND TO:

DATED MATERIAL