

Devoted to the interests of  
the Dutch Breed  
"America's Finest Rabbit"

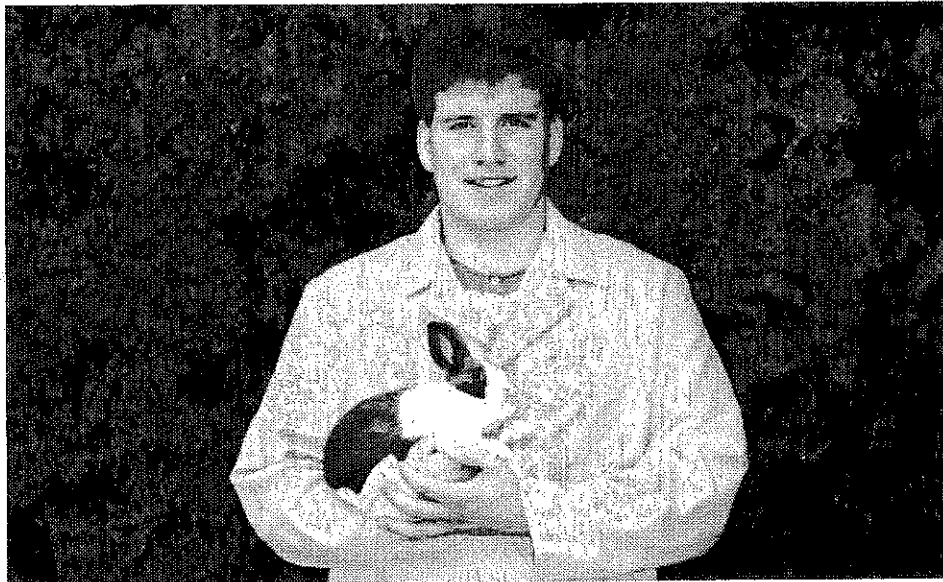


# THE DUTCH REPORTER

VOLUME 54 NO 3

AUGUST-SEPTEMBER 1996

## THE TRADITION CONTINUES



New ARBA Judge Erik Bengtson

See cover story page 8  
Ballot enclosed  
Peoria news page 10

*Official newsletter of the American Dutch Rabbit Club*

# EICH'S RABBITRY

Top Quality Dutch  
FOR SALE

National Winners for over 46  
years

Black-Blue-Chocolate-Tortoise

WE WILL SHIP



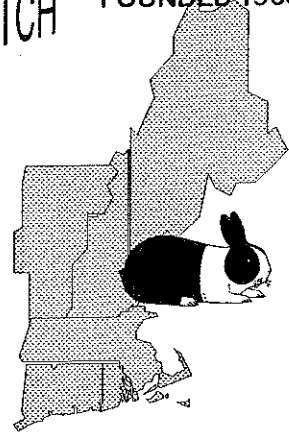
ROGER & BONNIE EICH  
Box 502  
Dallas Center, IA 50063  
(515) 992-3466

6/99

# NEW ENGLAND DUTCH RABBIT CLUB

FOUNDED 1963

Spring & Fall  
Shows



Newsletter published  
twice a year.

Dawn M. Bradahw, Sec'y.  
56 Sherwood Circle  
Manchester, CT 06040

3/97

DUES: \$5.00 PER YEAR

# PETERS' RABBITS



Black, Blue & Chocolate

BOV Blue-'91 NDS      BOV Blue-'92 NDS  
BOV Blue-'94 ARBA Conv.      1st Blue Sr Buck '95 NDS

Penn & Sue Peters  
Rt 10 Box 458  
Morgantown, WV 26505  
(304)291-0111  
9/97



pring



Hill Rabbitry

DUTCH & ENGLISH SPOTS

Rick & Julie Billups  
1219 Willis Branch Rd  
Goodlettsville, TN 37072  
(615)859-8619



6/97



# DA-MAR'S

EQUIPMENT CO.

14468 Industrial Pkwy.  
South Beloit, IL 61080

FREE Illustrated Catalog

PHONE: 1-800-95BUNNY  
HOURS: 8 A.M. thru 6 P.M. MON.-FRI.  
8 A.M. thru 4 P.M. SATURDAY  
FAX: 815/624-2883 (24 HOURS A DAY)



For all your  
RABBITRY  
SUPPLIES

MOST MAJOR CREDIT CARDS ACCEPTED.

We ship UPS and RPS Daily.  
Up to 53% Disc. on Trucking.

Toll Free Order Line: 1-800-95BUNNY



# Compliments of Fleming's House of Rabbits

BLACK, BLUE & TORT DUTCH

DALE & JOSEPHINE FLEMING  
PO Box 133  
GREENVILLE, KENTUCKY 42345  
(502)338-7308

9/97

**PRESIDENT:**

**Fred Mullinax (96)**  
105-A Easy View Dr.  
Lincolnton, NC 28092  
(704)732-1554

**VICE-PRESIDENT:**

**Wayne MacKinnon (97)**  
146 Field St.  
Taunton, MA 02780  
(508)823-7953

**SECRETARY-TREASURER:**

**Doreen Bengtson (98)**  
Rt. 1 Box 95  
Lewiston, MN 55952-9720  
(507)864-2103 or  
**DOREEN@SELCO.LIB.MN.US**

**DISTRICT 1 DIRECTORS:**

**Ken Emerson (96)**  
4670 Lakeville Rd.  
Geneseo, NY 14454  
(716)243-5327  
**Sue Peters (97)**  
Rt 10 Box 458  
Morgantown, WV 26505  
(304)291-0111  
**Kevin Hooper (98)**  
7661 State Route 350  
New Vienna, OH 45159  
(513)987-2244

**DISTRICT 2 DIRECTORS:**

**Floyd Dopler (96)**  
Box 511  
Andalusia, IL 61232  
(309) 798-5367 or **fdopler@aol.com**  
**Richard Gehr (97)**  
190 N. First Ave.  
Coal City, IL 60416  
(815)634-2676  
**Sharon Mixdorf (98)**  
1357 Huntington Rd.  
Waterloo, IA 50701-3452  
(319)234-6937

**DISTRICT 3 DIRECTORS:**

**Fran Schettler (96)**  
305 Romae Ct.  
Danville, CA 94526  
(510) 838-8036  
**George Parmer (97)**  
9990 SW Marjorie Lane  
Beaverton, OR 97005  
(503)644-4870  
**Wenton Carlton (98)**  
14150 N Hawkeye Drive  
Tucson, AZ 85742  
(520)297-2681

**DISTRICT 1 STATES:**

CT, DE, FL, GA, ME, MD, MA, NH, NJ, NY, NC, OH, PA, RI, SC, VT, VA, WV

**DISTRICT 2 STATES:**

AL, AR, IL, IN, IA, KY, LA, MI, MN, MS, MO, TN, WI

**DISTRICT 3 STATES:**

AK, AZ, CA, CO, HI, ID, KS, MT, NE, NV, NM, ND, OK, OR, SD, TX, UT, WA, WY

**SWEEPSTAKES OPEN & YOUTH:**

**Jeffrey Andrews**  
325 Hamilton St.  
Albion, NY 14411  
(716)589-4857 or **jandrews@vivanet.com**

**PUBLICITY DEPARTMENT:**

**Rick & Julie Billups**  
1219 Willis Branch  
Goodlettsville, TN 37072  
Phone & Fax (615)859-8619

**DUTCH REPORTER EDITOR:**

**Julia Anderson**  
301 E Conant St.  
Portage, WI 53901  
(608) 742-6526 **Jadreditor@aol.com**

**DOMESTIC RABBITS REPORTER:**

**Eric Mixdorf**  
1357 Huntington Rd  
Waterloo, IA 50701  
(319)234-6937  
*Send news by 5th of Feb, April, June,  
Aug, Oct and Dec*

**YOUTH REP TO ADRC BOARD**

**Megan Gottschalk**  
6750 N Van Dyke  
Port Austin, Michigan 48467  
**MGWheatie@aol.com**

**NEEDED FOR NEXT DUTCH RE-  
PORTER: (SEND BY NOV 1)**

**IDEAS ON THE FOLLOWING:**

Caring for orphans  
Breeding Blacks

**REMEMBER:**

**Ballots must be to ADRC Sec/Treas no  
later than Sept 15**

**HIGHLIGHTS**

Director's Reports..... pgs 2 - 4  
Tort Dutch..... pgs 5,6  
E-Mail & member judges..... pg 7  
Cover story..... pg 8  
New members..... pg 9  
Peoria connection..... pg 10  
Youth news..... pg 11  
Local club news..... pg 12  
Jill Dobson..... pg 13  
Building a Better Dutch..... pg 14  
Publicity dept report..... pg 14  
ADRC financial report..... pg 15  
Publicity order form..... pg 17  
Hall of Fame..... pg 19,20  
Warren McNamara..... pg 21  
Ballot listing..... pg 21  
97 NDS info..... pg 22  
Husbandry of the Rabbit..... pg 23  
Standings..... pg 24  
Show results..... pgs 25-39  
Membership/Sanction blank..... pg 44

**ADVERTISEMENTS:**

**Inside covers:** Bengtsons, DA-MARS, Blythe,  
Carlton, Eich, NEDRC, Billups, Peters,  
Flemings, Strandwitz  
Anderson, Bengtson, Schettler..... pg 6  
Dowd, Barton, Dobson/Purpus..... pg 7  
Gates, Bullis..... pg 8  
Bass Equipment..... pg 9  
Barnes..... pg 11  
MacKinnon..... pg 12  
Imes..... pg 13  
Andrews..... pg 14  
Dill, Bergene..... pg 15  
Schwartz, Mullinax, Hooper, McClung..... pg 16  
Wireman, Guetschow, McCune, Micallef,  
Mixdorf, Hamersley..... pg 22

**ADVERTISING RATES:**

	<i>SINGLE ISSUE</i>	<i>YEARLY</i>
Full Page	\$ 30.00	\$120.00
Half Page	\$ 20.00	\$ 80.00
Third Page	\$ 16.00	\$ 65.00
Fourth Page	\$ 12.00	\$ 48.00
Yearly Breeder Card	_____	\$ 18.00
Judge & Registrar Listing	_____	\$ 12.00
Booster Listing	_____	\$ 12.00
"FOR SALE" Listing	\$ 10.00	_____



President's  
COLUMN

Hi Dutch Fans,

I hope everyone is enjoying summer and raising a lot of good Dutch. It's really been hot here in the south for the past few weeks. The temperatures have been around 90 degrees to over 100 degrees, so you can see we aren't raising too many Dutch.

Everyone needs to congratulate the Ohio Dutch Club for sponsoring the 1997 National Dutch Show. Without this club, we might not be having a '97 national show.

We will be electing a new president and three new directors, so lets all vote and give our support to the people who will be running the club for the next three years.

One of the greatest moments for me being in the club, was having the honor of inducting the first group of men and women into the Hall of Fame. It was a great feeling handing out the awards to all these outstanding people. I hope everyone enjoyed the first annual American Dutch Rabbit Club Hall of Fame, and we will have more recipients next year.

I hope to see all of you soon or give me a call sometime.

President  
*Fred Mullinax*  
Lincolnton, NC



Vice-President's  
COLUMN

Hello Everybody,

We back east are looking forward to the fall shows, and meeting again with our Dutch friends. There should be another good crop of juniors ready to go at it, in the fall. I generally show 95% rookies starting each spring and fall shows. It is a good indication of how my breeding program is going and what areas need improving.

September by the way is a key month for me to produce litters for next spring. Some of the best seniors come from September litters, preferably early September. These young seniors are generally in the very best of flesh and fur condition at 8 - 10 months of age. That puts them in the right place at the right time, so to speak. Look at the conditioning on the show winners, timing is very important to your success in showing.

Here in Massachusetts we seem to be in another transition period with the Dutch. Some of the long time Dutch breeders seem to not be showing as often, and the youth Dutch fanciers seemed to have gone on to other things. This I have noticed happens occasionally and seems to be normal. Lives change with other priorities such as collage, marriage, moving, etc. This is why we must strive with this club to make the hobby of raising and sowing Dutch a memorable experience. We want as many of those people back as we can get raising and showing Dutch again. The youth especially are very impressionable many rabbits were injured, can be a bad experience that turns youngsters off to the Dutch rabbit hobby. In short, make the new fancier feel that they are wanted and welcome, so we will all enjoy this hobby together for years to come.

In closing I would like to wish each and every one the very best of the fall shows. Above all, enjoy yourself and have fun.

Vice-President  
*Wayne MacKinnon*  
Taunton, MA



Sec/Treas  
COLUMN

Thank you to the Ohio State Dutch Club for graciously offering to host the 1997 National Dutch Show. The site will be the same as the 1996, that is, Greenville, Ohio and the date will be the first weekend in May.

**DISCLAIMER**  
Articles, statements, and opinions printed or expressed in the Dutch Reporter may not be those of the American Dutch Rabbit Club or the editor and are solely the responsibility of the authors.

So, make your plans. Also, all those interested groups that surfaced when we were searching for a host for 1997, let us hear from you. I have heard interest from several groups, but as of today nothing official has reached this office. If any of you have any questions, just give me a call, and I would be glad to talk with you. Wouldn't it be great if we had several bids for the 1998 and 1999 National's?

I would like to thank Kevin Hooper, Briony Barnes, Fran Schettler, Rick Billups, and Sue Strandwitz for their interest in the American Dutch Rabbit Club. We actually have races in two districts this time. These members have offered their names as candidates, now it is our responsibility to honor their interest with our interest. I would suggest that you vote immediately, because it is so easy to set it aside and forget it. Remember your vote must reach Rt. 1 Box 95 by September 15, 1996 to be counted. I usually check the mail when it arrives on the due date and then run to town and mail the ballots to the election committee. So, do you part for the American Dutch Rabbit Club and VOTE. Thanks.

I would like to call your attention to the fact that this issue of the Dutch Reporter is officially known as the July August issue. I have been trying to comply with our constitution and by-laws in everyway possible, and the document specifically states that the election ballots must be in the July August issue of the DR and must be received by the secretary no later than September 15. The next issue of the Dutch Reporter will be the September, October, November, December issue and will contain the ARBA Convention reports and happenings.

Every once in a while I get a question about memberships. If you will check your constitution and by-laws in your American Dutch Rabbit Club Guidebook, you will note that you have a 60 day grace period to renew your membership. If you renew after 60 days, you will be treated as a new member. In other words, if your renewal arrived 61 days after your expiration

you will receive a new membership number. You can request that your membership be backdated, but this will not happen automatically, you must request it. Every secretary has had a different method of arriving at membership numbers, this secretary starts the number with a B for Bengtson, then the last number of the year (ex. 6 for 1996) and then the number of members registered in this year, so B6007 would be the seventh member registered by this secretary in 1996. If the membership is a youth it will be preceded by a Y (ex. YB6128).

The new American Dutch Rabbit Club Guidebook should have reached all of you by now. If your copy has not arrived please let me know and I'll send you another. I have tried to keep a handle on who did and who didn't get a GB, and I hope that I didn't miss anyone. Thank you to Kevin and Julia for all of their work on the GB. We know there are things that can be improved, and if you have any suggestions, I will be starting a file for the next edition. I hope that we have enough to last until 2000, and it is not too soon to begin collecting information. We do need some new articles and so we need each of you to give some thought to what you could help with in the way of informative articles for the next edition. It would be great for you to try some of your thoughts out in the coming issues of the Dutch Reporter. So, start generating some ideas.

I look forward to seeing many of you in Peoria. Dan and Dawn Schwartz have worked hard to help with a top notch show. Bring your best and we'll see you there.

*Sec/Treas*

Doreen Bengtson



Lewiston, MN

[DOREEN@SELCO.LIB.MN.US](mailto:DOREEN@SELCO.LIB.MN.US)

**MEMBERS CANNOT  
READ YOUR AD, IF  
YOU DON'T ADVER-  
TISE**

## **D**ISTRICT ONE NEWS

### NEWS FROM SUE

Hi Everyone,

Well, it seems summer is well on its way in our part of the country; at times a little warm, but it sure beats the cold! We will no longer be breeding our Dutch does, as they don't do too well in the heat when they are pregnant. It really seems to stress them. We do have a number of nice babies coming up, though, so hope to have something to show in Peoria.

Speaking of shows, we attended a couple of nice ones late this spring. The Ohio State Dutch in conjunction with the Loraine County Rabbit Club in Ohio put on a real nice double show the first of June. They had a good turnout of Dutch — well over a hundred. Also, we attended the Lehigh Valley show in Leesport, PA on the fifteenth of June. There were over a hundred Dutch there, also. Chris Hayhow was the judge, and did a nice job, as did Bill Patrick and Kevin Bogat at the Ohio show.

We have a new rabbit club just starting in Waynesburg, PA. They have a real good membership of enthusiastic people, and will be having their first show on March 20. Anyone reading this and interested in attending is welcome to contact me. It should be a good show.

I was delighted to hear that we will be having a NDS in 1997. We certainly enjoyed the 1996 one, and being that it will be in the same place, are looking forward to it. For a while it didn't look as though we may have one, so are really grateful to the Ohio Club for stepping forward again. Thank you!!

*Sue Peters*

Morgantown, WV



### NEWS FROM KEVIN

Many of you have heard by now that the NDS will be coming back to Ohio in 1997. We had no other bids and our Ohio crew liked the idea, so we submitted a bid which was accepted. The date of the show will be MAY 2 - 4, 1997. It will be once again be held at Greenville, Ohio. The Michigan State Dutch Club has volunteered to help with the youth portion of the show. The next DR will have most of the details. One change this year is that everyone will need to request a catalog. In the past, the catalog was mailed to all who exhibited at the last NDS.

The next DR will also have all of the proposed amendments to our Constitution and By-laws. We will be working over the summer and early fall to prepare for these for circulation at the ARBA Convention in Peoria. Any input that you may have on our C & B should be forwarded to Fran Schettler, Ken Emerson, or myself.

In this issue, you will find your election ballot for officers of the American Dutch Rabbit Club. Let's have a record number of votes cast this year. The American Dutch Rabbit Club is only as strong as its membership. We have well over 500 members, how about 250 ballots cast?

There are always going to be areas across the country that don't have many Dutch. I know this can be discouraging to only show against yourself and the enthusiasm to show can dwindle. An idea that Rick Billups had, was for breeders in those areas to donate a pair of Dutch to the local shows raffle. In most cases that would instantly give you another breeder in the area. Don't feel as if you have to give away your best animal, but donate a couple of good breeding animals. What can it hurt?

Please feel free to contact me with any concerns or problems that you may have with the Dutch Club or with your Dutch.

Yours in Dutch,



*Kevin Hooper*

New Vienna, Ohio

## **D**ISTRICT TWO NEWS

### NEWS FROM SHARON

I have received favorable comments on the breeder of the year, or rabbit of the year contests. Jill Dobson of California and Valerie Dahl from Connecticut are on a committee with me, so if you have any suggestions or comments about having something like this, let any of us know. I did receive a letter from Megan Gottschalk on this. Thanks Megan.

We finally seem to be getting a few new breeders in Iowa. Hope to see them showing something soon.

We are done showing now until August. That last show we went to, was just way too hot.

We're trying to get prepared to leave all these creatures for a 4th of July camping trip. It will be strange traveling without rabbits in the car. You keep wanting to look back and check on them.

Stay cool.  
*Sharon Mixdorf*  
*Waterloo, Iowa*



## **D**ISTRICT THREE NEWS

### NEWS FROM FRAN

Wow! What a National Dutch Show. I turned my previous director's message in at the NDS, so this is my first opportunity to comment on the NDS. Everyone who helped make the 1996 National Dutch Show happen should be VERY proud of their accomplishments as it was a GREAT show. Too bad the bigger airports aren't a little closer though because even when I catch a 6:00 AM flight Friday morning in California, I can't get there much before 8:00 PM at night. This makes it hard to get to the Board meeting and get cooped in at the same time. However, thanks to my husband Jim and Karen Lewis, the rabbits did get safely into their coops

while I ran over to the meeting. This group will also be working on a repeat NDS for next year—how about a little more room between the banquet tables this next time?

### News From Nevada

I have had a report from Stan Burke that Dutch people there are in the process of forming a Nevada State Dutch Club. Good luck!

### News From California

The California Dutch Rabbit Club, along with some of the Nevada Dutch people, especially Stan Burke, the Bennett's and Jeanette Jesch, are still trying to put together a feasible plan to host a Reno National Dutch Show. Another committee is investigating alternative locations in California. The biggest single problem with the Reno location still seems to be the cooping. Prevailing costs on available cooping is currently about \$1.00 per hole PLUS shipping costs. For the size of show we anticipate, this cooping cost may be prohibitive. We have talked with some of the other breed clubs who are organizing various group national breed shows for 1998 in Reno. They are apparently planning on renting the Ohio State Club's coops, but his, we are currently told, would also be \$1.00 per coop plus a share of a \$4700 shipping fee. If anyone out there can help with this Reno area cooping issue, please call me at 510-838-8036 as soon as possible.

On a different note, the California Dutch Rabbit Club recently hosted five Dutch specialty shows in two weekends. First there was a triple Dutch show in Vacaville, CA followed by a double Dutch specialty show in Reno, Nevada a week later. The Saturday Reno double show was help in

conjunction with a youth all breed show on a Saturday, and then there was a open all breed show on Sunday. The kids got four shows in one weekend! Dutch breeders got together Saturday night for an informal dinner at a local restaurant, and everyone enjoyed the strawberry pie! There will be another double Dutch show near Santa Cruz on the Pacific Coast in July, followed the next day by an all breed show. The Roadrunner Dutch Club has also hosted a couple of recent Dutch Specialty shows in Ventura, CA right by the ocean, in both cases in conjunction with an all breed show.

The multiple show concept continues to expand in scope here in California. Maybe it is partially because California is such a large state that we don't think twice about traveling 3 or 4 hours plus to a show. Now it almost seems wasteful to go to a single show! Wow, what a change from just a few years ago.

I'd really enjoy hearing from other Dutch members, especially within my District, about their Dutch activities and local news. Are the other states seeing these multiple shows too? Our entry fees are steadily climbing to an average of \$2.75 per rabbit. Are your fees similar What level of interest is there within the District towards holding a National Dutch Show, either in Reno or elsewhere in the District? I won't know these answers or your local news unless you write to me, so please contact me at 305 Romae Court, Danville, CA 94526.

Have a safe and fun summer!

*Fran Schettler*  
*Danville, CA*



## **ORDER YOUR 1996 ARBA CONVENTION CATALOGS TODAY!**

Send \$8.00 to:  
Jerry Hicks  
84 Carefree Dr.  
Chatham, IL 62629  
Phone 217-483-4550

# BREEDING TORTOISE DUTCH RABBITS

## BREEDING TORTS

by Fran Schettler

Julia Anderson has asked for a few words on breeding tortoise Dutch. The torts were the last variety that Jim and I added to our Dutch herd. We started with a doe from Dorothy Bayliss and then acquired a super buck from Mark Pecaric and one other good doe from another breeder. This was about eight years ago. After acquiring another outstanding buck from Mark to recover from the premature demise of the first buck, our line of torts have done very well for us.

From my observations and experiences over the last several years, the tort color will not be a problem for you if you follow a few simple, basic rules:

1. Start with good colored and good typed stock.
2. Don't breed in other colors.
3. Cull for color in addition to type.

*To elaborate on each of these rules,*

**Rule 1** is pretty basic to getting a good start in any variety of Dutch.

**Rule 2:** If you cross your torts with any other color, you can easily distort the color and placement of your shadings. The shadings must be blue, not black, or chocolate etc. It is VERY EASY to totally destroy your shading color by breeding in black or keeping that cute tort baby that throws unexpectedly out of some other color cross. It is VERY HARD to get the shadings back to the proper color!

**Rule 3:** Torts will only get darker with age. While I don't mind keeping a lighter colored tort, a tort that is already dark as a junior will only get darker as it gets older and may introduce that darkness in color in its offspring. I would avoid these animals whenever possible. What do I mean by a dark tort? Most typically this is an animal that has dark shadings running too high up on the back or even all over the animal's body. Many times this darkness is closer to black than to blue and it frequently seems that this dark tort will have other colors in its background, but not always.



## TORTOISE BREEDING

by Briony Barnes

I have raised Tortoise Dutch exclusively for almost five years, and have enjoyed the challenge of perfecting this color. Here are some tips I've found useful in Tort breeding.

First, I don't believe it is ever necessary to breed other colors into your Torts. I have studied the genetics involved and there is nothing another color can do to improve it. We breeders have such a wide range of shades in Torts that you can find whatever you need within the variety, no matter how dark or light your bunnies may be.

Perfecting the shades is difficult. I know I haven't quite done it yet, at least on a well-marked and typed rabbit! I have found that by breeding a doe with a smutty back to a buck with shadings on his head and ears only and nowhere else, you can get some nicely colored babies. Generally bucks tend to be lighter than does with less shadings on the hindquarters. I don't know why.

Another thing that is hard trying to guess what color the baby will be when it grows up. Some that look like golds may turn into nice torts after one molt. This may vary with the strain. Mine, for example, tend to be born with their shadings, then they fade out and come back. Some things to look for in determining adult color are 1) Surface color. 2) Ears and 3) Under tail.

The surface color of a nice Tort will be orange. Bright, clear orange, not sumutty or washed out.

Ears are a good indicator as to shadings. They tend to darken up before other areas. If your baby has nice dark ears at 2-3 months, chances are it will be a good Tort. When a baby develops shadings, usually the ears will darken first followed by the head. Haunch shadings may be slow coming in, sometimes taking up to a year to fully develop.

Under tails in babies are a good indicator as to belly color (unless they are very light). The undersides of tails are darker than bellies in most babies, but the belly color will normally deepen to match in adults. The top color of the tail should be the same as the body color.

The main thing to remember is that most if not all babies will be darker by maturity.

I have discovered that it is possible for Torts to be washed out by the sun. They develop an ugly dull yellowish color on their backs.

I hope these hints have helped you, I know I have enjoyed raising and observing this beautiful variety.



## SOME HINTS ON TORTS

by Eric Mixdorf

The breeding of Tortoise Dutch is a little more of a challenge than some of the other basic colors (Black, Blue, Chocolate) in that Tortoise is a shaded variety. Like the Steel, it takes a blend of colors. To get a nice even distribution of rich clean orange color and smokey blue shading, is the ultimate goal.

You still see a lot of Torts at the shows with entirely too much shading, mainly black shadings or smut up over the back of the animal as well as the entire head. On occasion you still run across Torts that have chocolate shadings or are more caramel in color. Then there are Blue Fawn colors that pop up from time to time. These should all be signs that some color mixing may have taken place somewhere in the animals background.

First start from a reputable breeder who can show you the pedigrees and bloodlines on his animals. Tort to Tort breedings for several generations is best without mixing of other colors. Look through their herd of Torts for consistency in color as well as type. Look over their senior animals and how well they have kept their color. Tortoise will usually darken some with each

molt so the cleaner orange the senior animals are the better. The herd buck should exemplify the brightest, cleanest color possible. You may want to keep a variety of shaded does to experiment with different combinations with the buck. We usually look at color of the kits at 10 - 14 days for uniformity within the litter. The brighter babies are the ones to watch, even a little shading on the lower hips will be visible by then. Dark kits in the nestbox will result in juniors with too much shading later. Keep the good colored does from these litters and breed back to the sire. Again, cull the dark. Through strict and selective culling your correct color will become more and more evident.


So what is the correct color? With ten different judges you will get ten different opinions. And it could be based on what they see on the show tables in their part of the country. They may have never seen a good Tort. We are not looking for that color of a Tort, Mini Rex, or a Tort Holland Lop, or a Tort English Spot. These would all be too dark in comparison to a Tortoise Dutch in my opinion. The standard calls for a bright clean orange over the body. Bright—meaning brilliant, illuminating and glossy. Clean—meaning free from smut or shading of any kind. Orange—a rich deep orange as to resemble a pumpkin or orange marmalade jelly. Not fluorescent road construction orange, not madagascar, not sooty fawn. Smokey blue shadings should appear on the lower haunches and carry over to the underside of the tail and groin area. (Beware of extremely light or white tails). Not black shadings...not chocolate shadings. Not! Not! Not! Shadings on the head should appear around the whisker beds and blend to orange up to the ears. At the base of the ears, the shading will appear again and blend up the ears to match the body color. By laying the rabbits ears down to touch its back, the ears and body should match.

By keeping the Tortoise color called for in the standard, the Tortoise Dutch should begin to show themselves more consistently throughout the country. You may show the same rabbit twice in one day and get Best Tortoise one time and get 4th out of a class of 5 the next because he is too bright in color (?). Can a black be too black?

Maybe they would make a good topic to present at a district judges conference in your area. Rather than using a Black, use a Tortoise Dutch to explain the importance of good type, markings and color. Through strict culling, selective breeding and continuing education we can all learn. I've raised them for 20 years and am still learning.




OHIO IN '97!



andy  
Anderson


RABBITS-ON-LINE

"Upgrade to Type"



301 E Conant St  
Portage, WI 53901  
(608) 742-6526

12/96



Erik Bengtson,  
ARBA Judge

(507)864-2103  
311 Wilson Ave., SE  
St. Cloud, MN 56304

Breeder of a few good Dutch  
All colors

12/96

FRAN, JIM, MATTHEW and KEVIN  
SCHETTLER'S  
DANVILLE RABBIT TREE

305 Romae Ct.  
Danville, California 94526  
510-838-8036

DUTCH - quality in all six colors

National level winnings:

Best of Breed -1991 ARBA Convention  
Best Opposite of Breed - 1993 NDS

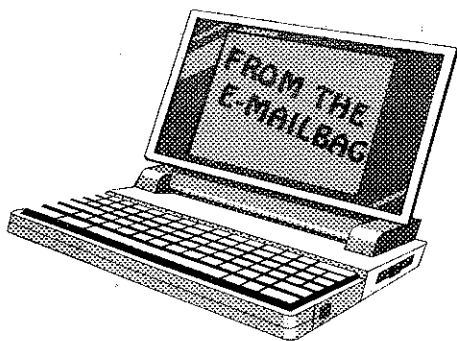
- 1 - Best Black, Best Fur, Best Opp Gray
- 3 - Best Blue
- 2 - Best Chocolate, Best Chocolate Display
- 1 - Best Opp Chocolate, Best Opp Blue
- 2 - Best Steel, Best Gray
- 1 - Best Tortoise, Best Tort Display
- 2 - Best Opp Tort, Best Blue Display

Jim: President, California Dutch  
Rabbit Club

Fran: Director, ADRC  
Secretary/Treasurer,  
California Dutch Rabbit Club







**JUDGES THAT ARE  
ADRC MEMBERS**

Conall Addison	KS	Mike D'Amico	OH
Allen Barr	CA	Karl Ehnis, Jr.	MI
Erik Bengtson	MN	Robert Evertson	KS
Larry Bengtson	MN	Stan Freed	VA
Kevin Bogan	OH	Richard Gehr	IL
Donna Brak	WA	Gary Grimm	IA
Ray Brewer	SC	Dr. Chris Hayhow	PA
Al Butler	OH	Roger Krause	CO
Barbara Butler	OH	James Lemon	FL
Wenton Carlton	AZ	Norman McNary	FL
Glen Carr	IL	Keith McNinch	OK
Jan Coffelt	WA	Ivan Miller	IL
Marvin Cole	KS	Nick Nelson	MN
Fred Cremer	CA	Jack Pugh	MD
Marvin Cummings	FL	Mark Stewardson	CAN
		John Weltevreden	MI
		Dr. Scott Williamson	CA

From: obrien@cyberspace.com  
To: Jadreditor@aol.com

Dear Ms. Anderson,

I just wanted to compliment the individuals who put together and contributed to our new guidebook! I was very impressed by the quality and diversity of the information presented, available to any breeder, new or experienced. It's great we have such a fine organization with such dedicated people. Thanks again for the wonderful guidebook!

*Kelly O'Brien*

P.S. A note to Briony Barnes- good luck on your campaign for District Three Director, I think it's terrific a youth member is running!

From: pbrennan@mail.qp.gov.bc.ca (Pat Brennan)

To: Jadreditor@aol.com

Thanks, I received my guidebook yesterday in the mail. My compliments on the book, looks really good with lots of new and relevant information. I especially enjoy the new articles by some of the current top breeders (like Kevin) and the color photos were a really nice touch. (that tort looks very interesting, perhaps in a couple years I'll add a few to my barn)

Regards

Pat

**Sophia & Andy Barton**

**7580 Col. - Lanc. Rd.  
Carroll, Ohio 43112**



12/96

**DUE ON SEPTEMBER 15, 1996**

*ADRC Director's ballots— due to Doreen Bengtson*

*Banquet reservations for Peoria—due to Dan & Dawn Schwartz*

**DOWD'S DUTCH**

**DON & DANA  
(319)237-6392**



**222 Grove Street  
Box 88**

**Fredericksburg, Iowa 50630**

9/96



**Quality Show and Breed Dutch**

**Black, Blue, Gray, Tortoise, Steel**

**Joanne Purpus  
579 La Costa Ave.  
Leucadia, CA 92024  
(619)942-5018**

**Jill Dobson  
1560 Via Paloma  
Escondido, CA 92026  
(619)739-1747**

12/96

## A CONVERSATION WITH ERIK BENGTSON

NEW ARBA JUDGE #699

**What's it been like to grow up in a "rabbit family"?** It was fine except for when I got big, climbing into the little rabbit holes was tough.

**Do you remember anyone ever spelling your first and last name correctly growing up?** My mother and father do pretty good at it.

**When did your rabbit experiences begin?** April 1970.

**When were you born?** April 9, 1970.

**So when did you start raising rabbits?** At the ripe old age of 5. My first rabbits were black and chocolate Polish.

**Do you remember always liking rabbits?** It is tough to like rabbits in Minnesota during the Winter in an unheated barn, but somehow I managed to develop a deep love for rabbits.

**When did you get your first Dutch rabbit?** I got my first Dutch when I was 13 years old. I picked him out of my dad's culls. Dad was kind enough to sell him to me for 10 bucks! I remember the rabbit specifically was tattooed SONY. Great type, great markings, and sterile as the Sahara Desert. I was sure that I could get a litter out of him. I was wrong. That was the first lesson my father taught me about Dutch, and it only cost me 10 bucks.

**What do you remember about rabbit shows as a youngster?** My father, Larry Bengtson was usually judging so I could play when the rabbits were done being judged. Most shows only had 2 or 3 judges, and they were Darrell Bramhall, Gary Grimm, and my father. I remember playing with Gary Grimm's son John Grimm at these shows. (This Spring I had the pleasure of taking my judge's test the same day as John—just like old times!)

**How many breeds of rabbits do you remember your family raising as you grew up?** LOTS—nearly all the breeds.

**What were your favorites?** Dutch, Polish, Palominos, Florida Whites and English Spots.

**How have rabbit shows changed from your point of view in the past 10 years or so?** They used to be a place to show my rabbits and win. Now winning is nice, but I see it as an excellent place to exchange information, stories and jokes. So if you have heard a good one send it my way!

**Did you attend many nationals shows growing up and where did you travel to?** I was dragged to many shows all over the country. One I remember in particular was ARBA Convention in Houston, Texas—1977. I was too young to know what happened, but something exciting was going on around me. I found out a few years later that a Bengtson chocolate Dutch won BOB!

**Did you always want to become a judge?** Yes, I did, since I was a young child. I wanted to be a judge, just like my father.

**When did you get serious about becoming a judge?** About three years ago, after I graduated from college and had the time to pursue this.

**Did growing up with rabbits help you prepare for this examination?** Yes, but I still studied very hard.

**What do you remember about the test?** Sweating, when asked the first question on the oral part.

**How many father and son judges are there today?** There are two—my father and I and Gary Grimm and his son John.

**Where do you hope to travel to as a judge?** EVERYWHERE! God willing!

**What are your goals as a judge?** To be the best judge I can be.

...since I was a young child. I wanted to be a judge, just like my father.



Terri Bullis

Specializing in Chocolate Dutch  
Also Blacks - Blues

Also Belgian Hares

24 Los Flores Ave.  
So. San Francisco, CA 94080  
(415)952-6520 12/96

**YOU CAN'T BEAT THE DUTCH!**

Karen & Darrell Gates  
M404 Co. Trk. E  
Marshfield, WI 54449  
(715)384-8919



Blacks, Blues  
& Chocolates

9/96

TAKE OUT A "SPECIAL AD" IN PEORIA! LET EVERYONE KNOW YOU WERE THERE!

# WELCOME NEW MEMBERS!

Cindy and Jorri Rawailot, Illinois  
Beth Witters, Washington  
Michelle Swisher, Ohio (Rec.: Anthony Micallef)  
Harry Boots III, Iowa  
Judy DeBois, Florida (Red: Richard DuBois)  
Jesse Eaton, Michigan  
Rachel Eaton, Michigan  
Melissa Grazier, Montana  
Karen Bloomquist, Nebraska  
Robert Pease, Missouri  
Brennan Stillman, Indiana  
"Skip" F B Hall, New York  
Robyn Gabel, Wyoming  
Desiree Vigil, Wyoming  
Katrina Hoelzen, Wisconsin (Rec.: Terri Gegenfurtner)  
Rick Rhyne, North Carolina  
Jenni Wall, Washington  
Robert Hessick, Ohio (Rec.: Robin Hessick-Fooco)

Casi Shaw, Wisconsin  
April Lewis, South Dakota  
David A Boon, Michigan  
April Hupp, California  
Phillip Pruitt, Illinois  
Nancy Saxman, Pennsylvania  
Christina Saxman, Pennsylvania (Rec.: Briony Barnes)  
Kim Haas, Illinois  
Mark Ojeda, Texas  
April Hupp, California  
Phillip Pruitt, Illinois  
Sarah Low, Iowa  
Kate Kiley, Georgia  
Samantha Fitzgerald, Minnesota (Red: Char Wright)  
Emeri Caudill, Missouri  
Andrew Wright, Indiana  
Patricia Bell, Colorado  
Victor Fullerton, Vermont

## PREMIUM PRODUCTS FOR ... OUR PRICELESS CUSTOMERS !!!

**BASS NOW PROUDLY OFFERS OUR STACK-A-HUTCH  
LEGS WITH A PREMIUM POWDER COATED FINISH  
AT NO EXTRA COST !!**

**ORDER YOUR STACKABLE CAGING EQUIPPED WITH  
OUR LEGS AND ABS PLASTIC PANS AND FORGET  
ABOUT RUST AND CORROSION FOREVER!!**

**CONSULT THE BASS PROFESSIONALS —  
ONE CALL — ONE COMPANY...NOBODY ELSE EVEN COMES CLOSE!**

HOME OFFICE AND PLANT  
P.O. BOX 352  
MONETT, MO 65708  
417-235-7557  
1-800-798-0150  
FAX 417-235-4312

**Bass**  
EQUIPMENT COMPANY

WESTERN WAREHOUSE  
11264 EASTSIDE ROAD  
HEALDSBURG, CA 95448  
707-433-6177  
1-800-369-7518

## GET YOUR KICKS IN 96

*Catch The Spirit In Peoria, IL at the 73rd  
ARBA Convention  
Oct. 20 - 24*

**Open Breed Chairperson:** Dan Schwartz

**Open Breed Co-Chairperson:** Dawn Schwartz

**Youth Breed Chairperson:** Robert Woods, Jr.

**Youth Breed Co-Chairperson:** Travis Anderson

### HOTELS:

**ARBA Headquarters:** Pere Marquette

(800)447-1676

1 Block from Civic Center

**Jumers Castle Lodge** (800)285-8637

\$68 Single & Double

2.5 miles from Civic Center

**Red Roof Inn** (800)843-7663

\$47 Single/\$57 (2) Doubles



### JUDGES:

Mike D'Amico & Al Butler

### BREAKFAST BANQUET:

Sunrise Breakfast Bar at Jumer's Castle Lodge 117 N Western at Moss Ave. Peoria, IL.

*Wednesday Oct. 23. 8:30 AM to 11:30 AM*

**Price (tax/tip included):** \$10 per person

***Banquet Reservations Required:*** Send to Dawn Schwartz 13526 S Tara Drive Lockport, IL 60441. ***Deadline for reservations is Sept. 15.***

### AWARDS PRESENTATION:

The awards will follow our Breakfast and they promise to be GREAT!

### ADRC RAFFLE:

Please remember to try to bring something for our raffle table. It would be greatly appreciated by Julie & Rick.

### SELLER'S CLASS:

Open & Youth to follow judging on Monday. Bring a SHARP DUTCH to help promote our breed!

Everyone in Illinois is looking forward to seeing you. We PROMISE to show you a really GREAT TIME!



#### BANQUET RESERVATION FORM

Name \_\_\_\_\_

Number Attending \_\_\_\_\_

Phone Number \_\_\_\_\_

***Reservation Deadline 9/15/95 Send to Dawn Schwartz***

#### GET YOUR KICKS IN 96 AT THE 73rd ARBA CONVENTION DONATION FORM FOR SPECIALS

Name \_\_\_\_\_

Amount Enclosed \$ \_\_\_\_\_

**Please send to Dawn Schwartz, (708)301-7752 See address above**

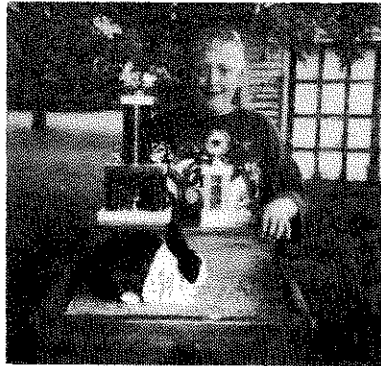
The 1997 Ohio State Dutch Club will host  
the National Dutch Show in Greenville,  
Ohio May 2-4.

youth  
HAPPENINGS



.....our future stars

SOME PRIZE WINNING BUNNIES!



McCune's Phoenix  
Steel Jr Doe

BIS July 6, 1996

SWMRC - Worthington, MN



McCune's Terra  
Steel Doe

Best 4 Class March 17, 1996

SCIRBA - Winterset, Iowa

*Both bred and shown by Jess McCune of Spencer, Iowa*


HOME AGAIN

The Dutch Reporter had articles on preparing for a show. Now here is a checklist to use when you return from the show. Lets start at the point where the rabbits are back in their cages.

- Fresh water, hay, bread treat to show rabbits.
- Gather and disinfect carry cups (bucket w/bleach).
- Empty carry cage trays (in garden, worm pit, trash can etc.)
- Place carry cage(s) and trays in sun to disinfect.
- Sweep out inside/outside vehicle.
- Unpack vehicle.
- Telephone a rabbit buddy, talk about the show.
- Put on pajamas, relax.
- Tally show results.

DAY LATER

- Wash carry cages.
- Vacuum show table, restock show slips.
- Wash carry cups.
- Store carry cages, cups.
- Check if show rabbit(s) are eating, provide comfrey, bread, treat as necessary.
- Display trophy, ribbons.
- Write letter and thank you notes to judge(s) and friends.
- Budget \$ for next show.
- Eat carrots with your best show rabbit.

Megan Gottschalk  
Port Austin, Michigan 

**Congratulations to Brad Widrig who got Reserve in Show at the Lilac City Youth Show in Spokane, Washington with a Tort Buck.**

**YOUTH BREEDERS--SEND IN YOUR NEWS TO THE DR EDITOR! WE WANT TO HEAR HOW YOUR DOING.**

Dear Dutch Reporter,

I am sending a picture of me and my blue junior buck that got BOB in the Funky Bunnies Youth Show in Red Lodge, Montana on June 1. He also got BOV in another show the same day. My mom and I started raising Dutch when I was in first grade and joined 4-H. We started with some rabbits from Donna Brak. I'll be in 4th grade this fall. We still enjoy our Dutch.

Emma Heller  
Gardiner, MT



Emma Heller of Gardiner, MT  
ADRC Youth Member

**BRIONY BARNES**  
Tortoise Dutch Only  
Top Quality Stock  
Will Ship



12/96

5297 NW 10th  
El Dorado, KS 67042  
(316)752-3415

## LOCAL CLUB INFORMATION

### CALIFORNIA NEWS

#### UPCOMING CALIFORNIA All Dutch Shows

##### Southern California:

August 4 Cardiff-by-the-Sea  
October 6 Leucadia

##### Northern California:

August 17 Morgan Hill A.M. show

Contact Fran Schettler for more information

#### RECENT ALL DUTCH SHOW WINNERS

Sun Valley Dutch Fanciers 2/25/96: BOB and BOS Jill Dobson

San Diego Beach and Rabbit Club 2/25/96 BOB- John Eubank BOS- Jill Dobson

Roadrunner Dutch Rabbit Club 3/9/96 BOB- Brenda Diaz BOS- Fran and Jim Schettler

Central Valley Dutch Speciality 3/23/96 BOB- Jim and Fran Schettler BOS- Julie Toth

### UPPER MIDWEST DUTCH RABBIT CLUB NEWS

The UMDRC Annual Fun Show was held in the part near Stockton, Minnesota on June 2, 1996. Nick Nelson of Minnesota judged 100 Dutch in open and 54 in youth.

#### OPENS HOW WINNERS

BOV Blue - Jan Luedtke  
BOV Chocolate - Troy Ihrke  
BOV Tortoise - E & S Mixdorf  
BOV Steel - Jan Luedtke  
BOV Br. Gray - Bengtson's Dutch  
BOB honors went to Sue Strandwitz's Black Sr. Buck and BOS went to a Chocolate Jr. Doe shown by Troy Ihrke.

#### YOUTH SHOW WINNERS

BOV Black - Nick Wenger  
BOV Blue - Nick Wenger  
BOV Chocolate - Nick Wenger  
BOV Tortoise - D & D Luedtke  
BOV Steel - Jess McCune  
BOV Br. Gray - Jess McCune

Nick Wenger won BOB with a Blue Jr. Doe and Valerie Worzella got the BOS honors with her Blue Sr. Buck

### FLORIDA HAPPENINGS

We have quality rabbit shows in the state of Florida with good judges from across the U.S.A. In numbers from 600 - 2,000 entries per show. The Dutch numbers range from 30 to 60. Our Dutch folks here are a delightful group. Always willing to help one another. A little kidding here and there, like "hey Dale, you should have wiped the milk off of that baby tort's face before you put her up before the judge." Or, "I only carried one Dutch to the show, because I only need one to win". We go to the shows not only to compete, but very frankly, to see each other again and a genuine love for one another.

We drove to Deland, Florida on June 29th, for a show. We showed in show A. There was over 100 entries in the open and over 250 in the youth. 51 Dutch was judges by Tom Andrews and he awarded my nine week old black junior doe as Best Dutch. She went up for BIS before Dave Cardinal and Ray Brewer of South Carolina and was awarded 2nd runner up for BIS.

We welcome all Dutch breeders from other states to show with us and enjoy each other. We would love to meet you.

Sincerely - a lover of my brother and sisters and that little rabbit with a white bank around it's shoulders.

Dale Grabenbauer  
Sebastian, Florida



## WAYNE MAC KINNON Breeder and Exhibitor of Dutch Rabbits

1955 \_\_\_\_\_ 1996



MAC'S W971  
BEST OF BREED  
1995 ARBA CONV.  
LOUISVILLE, KENTUCKY  
1ST SR DOE 1996 NATIONAL  
DUTCH SHOW  
WELLINGTON, OHIO

1992 Best of Breed (540)  
ARBA Convention Columbus, Ohio  
1995 Best of Breed (533)  
& Best Opposite Sex National  
Dutch Show Oshkosh, Wisconsin  
1995 Best of Breed (578)  
ARBA Convention, Louisville, KY  
1963 Best Senior ARBA  
Convention Sedalia, Missouri  
1970 Best Senior ARBA  
Convention, Syracuse, New York  
1993 Best Senior ARBA  
Convention Tacoma Washington

Will Ship October 1 to May 1  
Phone Correspondence Only



Call evenings for information  
(508)823-7953

146 Field Street  
Taunton, MA 02780

6/97

## A TRUE BREEDER AND PROMOTER OF OUR BREED

The following story is to let you know of a fellow breeder's kindness, sincerity, & promotion of her breed. Most of you will know or either have heard of **Jill Dobson**, from California. Dan & I both had the pleasure of meeting her in Tulsa, OK at the ARBA Convention. Jill is the kind of person that after meeting her you feel like you've known her for along time. She's a very easy going, friendly individual.

At this years past Dutch Nationals in Ohio, I was talking to Jill when low and behold, my eye caught a flashy Tort Jr Doe, it turned out to be Jill's. I told her that was a really sharp Doe, and what was really ironic about that comment was — I don't even like Tort's. I went on to tell her that if Dan found this particular Doe he would definitely buy her, being that he has had the bug to buy a Tort for the last 2 years.

*It's nice to know there are still individuals out there with good character.*

Later that morning Jill and me were both writing when sure enough here comes Dan up to ask her about that flashy Tort Doe. Both me and Jill ended up on the floor, now do I know my husband or what! Well sure enough it was a done deal, she was ours. This is definitely the part where you want to follow this story closely. That Jr. Doe went on to win her class out of 38 Jr. Does, she also was best Jr. Tort. Jill, Dan & me all watched her win her class. It was at this time that I asked Jill if she still was for sale. And her answer was, "Why of course she is, she's yours now." I don't know about you all, but that to me is held in the highest regard. It's nice to know that there are still individuals out there with good character.

So as the story goes "LASSIE" came home with us to Illinois. Dan was going to breed her as soon as we brought her home, but I thought we should maybe let her settle in a little first. Then we decided to go to a 4 show weekend in

Huntington, IN on Memorial weekend. Lassie was looking really good for this pre entry show so we decided to enter her. We went ahead and bred her 2 weeks before the show hoping she would even blossom more. We went with the hopes of her winning her Senior Doe class. Well, she surpassed that, she won 3 BOBs and 1 BOS, and went on to win 2 BIS out of the four shows. One of the judges went as far to tell us she was the best Dutch they had seen. As soon as we got home I called Jill to let her know how her Lassie did, she seemed pleasantly surprised. I know that with selling fine show stock you always wonder, "I wonder how that bunny is showing?" It's always nice in my mind to let the breeder know when you have a big win, it makes them feel as if they are going in the right direction. I feel that more breeders should take the time to sit down and put something positive down on paper about a fellow breeder. After all, that is one of the reasons we raise bunnies, for the friendships, competition and FUN! Always remember "RABBITS ARE FOR FUN!"

**Dan & Dawn Schwartz**  
Lockport, IL



- 1 Ballots due to Doreen no later than **Sept. 15, 1996.**
- 2 Peoria banquet reservations and specials due to Dawn and Dan Schwartz **RIGHT AWAY!**
- 3 Ads needed for the DR. Send to Julia Anderson.
- 4 Send to Kevin Hooper ads & specials for the 97 NDS.
- 5 Next DR deadline is Nov. 1. Please send your thoughts on breeding blacks and caring for orphans.
- 6 Renew your membership promptly.

Dear Julia,

I found this ad for the Dutch Club in a copy of the 1954 - 56 ARBA Guide Book.

I thought maybe you would want to run a copy in the Dutch Reporter. Look at the dues and rabbit in the emblem. Also, the DR was a monthly publication. At that time the ARBA office was in Pittsburgh, PA and James Blythe was the secretary.

Bonnie Glenn  
Chicora, PA



**Clover Lane Dutch Rabbits**  
(all colors)

John C. (Jay) Imes ARBA Registrar ABA Judge

RD #10 Box 224

Green Mtn. St.

Meadville, PA 16335

(814)337-5395

12/96



## American Dutch Rabbit Club

FOR  
BEAUTY!



FOR  
SPORT!

YOU CAN'T BEAT THE DUTCH

**THE WORLD'S PREMIER SHOW RABBIT**

Our valuable illustrated GUIDE BOOK and THE DUTCH REPORTER, monthly publication, are given with membership.

**JOIN US NOW**  
**\$2.00 PER YEAR**

SECRETARY  
Mrs. Madeline Tuttle Grables  
2545 Lakeview—Union Lake  
Pontiac, Michigan

## BUILDING A BETTER DUTCH

By Kevin Hooper

I am going to share my thoughts on how I have been breeding and trying to build a better Dutch. This is not a fast process, but you can make it faster with careful selection. By no means are my Dutch perfect, but they are very consistent.

I first began working on my body type. The first feature that I selected for was depth. When I felt the majority of my Dutch had depth, I concentrated on full lower hind quarters. I am, and will always be working on lower hq, but I see much improvement in this area over what my Dutch were a few years ago. Last, I will work on width. A nice tall Dutch with full hq that also has width to the body will show itself as very round. I did not worry about the head shape until I had the body depth that I liked, and the lower hq. As I bred in the width to the body, the head seemed to arrive as well. As I was trying to establish my own line, I did not bring in very many Dutch from other herds. I have only one animal in my herd that I did not raise and he is 1/2 my stock. I would suggest that you cull from your herd any animals that have narrow or pinched hq. If that animal is kept, it better have a bunch of superior features to pass on to its' offspring and you will need to cull the bunnies carefully.

As far as markings go, it would be nice to be able to correct them all at once, but it is very unlikely. I like to look through all of my animals every few months to see what the most prominent marking fault is. I keep only animals that closely match the standard description. If a Dutch has many superior qualities, I will allow a major fault. If I find that the most common fault is a biased saddle, than I will put more emphasis on a proper saddle marking when I do my next cull. As you eliminate the groups of faults, you will see improvements in the overall quality and consistency of your herd.

Good fur and color should be in the foundation of your stock as well. A Dutch with good density (thickness), texture, and

length to the coat will enhance the markings and improve the feel. Do the best you can on color. I have used many animals with fair color in the past providing that they have many superior traits otherwise.

One other point I would emphasize. You need to keep the "generation interval" low in your rabbitry. This means you need to have a young herd. To do this you must keep breeding stock out of new litters and cull older animals that are marginal producers. The average age in my herd counting the animals that I am keeping is usually less than one year.

My theory is that if you continually are eliminating faults from the herd, the quality of your Dutch overall will improve greatly.

J & R  
RABBITRY  
(716)589-4857



Pedigreed  
Mini Lops & Dutch

Jeff & Ruth  
Andrews

325 Hamilton St.  
Albion, NY 14411

6/97

### American Dutch Rabbit Club Publicity Department 2nd Quarter 1996 nancial Report

<b>April 1, 1996 Beginning Balance</b>		<b>\$ 333.83</b>
Postage Expense	(\$61.00)	272.83
NDS Banner	(93.10)	179.73
Order refunds	(4.00)	175.73
NDS Raffle Expense	(22.71)	153.01
NDS Change for cash box	(156.00)	(2.98)
Deposits for April	245.71	242.73
Account Charge for April	(\$3.48)	239.25
<b>April 30, 1996 Ending Balance</b>		<b>\$239.25</b>
<b>May 1, 1996 Beginning Balance</b>		<b>\$239.25</b>
John Neff Engraving & Supplies	(\$83.00)	156.25
Order refunds	(4.00)	152.25
Ohio State Dutch Club, proceeds from 1995 ARBA raffle**	(250.00)	(97.75)
Deposit: change from cash box	156.00	58.25
Deposits for May	814.50	872.75
Account Charge for May	(4.57)	868.18
<b>May 31, 1996 Ending Balance</b>		<b>\$868.18</b>
<b>June 1, 1996 Beginning Balance</b>		<b>\$868.18</b>
Postage Expense	(\$10.04)	858.14
Account Charge for June	(1.67)	856.47
<b>June 30, 1996 Ending Balance</b>		<b>\$856.47</b>

\*\* proceeds from the Publicity Booth raffle during the 1995 ARBA Convention. All proceeds from the Publicity Booth raffle will go towards the next National Dutch Show.



**American Dutch Rabbit Club, Inc. Financial Statement 1996 Second Quarter Report**

**EDITOR'S REMARKS**

**Income:**

	Memberships	Sanctions	Gen Fund(Misc)	Total
April	\$698.00	\$588.00	\$1966.50	\$3252.50
May	317.00	519.00	39.00	875.00
June	392.00	900.00	435.93	1727.93
<b>TOTALS</b>	<b>\$1407.00</b>	<b>\$2007.00</b>	<b>\$2441.43</b>	<b>\$5855.43</b>

**Expenses:**

April	\$2759.37	Starting Balance	\$5191.59
May	1191.46	Income	\$5855.43
June	1667.22	Expenses	\$5618.05
<b>TOTAL</b>	<b>\$5618.05</b>	<b>Ending Balance</b>	<b>\$5419.97</b>

**CONTINGENCY FUND**

Previous Balance 3/31/96	\$6921.63
Deposit (1st Qtr 1996)	116.00
Withdrawal (Guide Book Printing)	(1772.27)
<b>Current Balance 6/30/96</b>	<b>\$5265.36</b>

Total Funds Available	
General Fund	\$5419.97
Contingency Fund	5265.36
<b>TOTAL</b>	<b>\$10685.33</b>

I certify this to be a true and accurate account of the American Dutch Rabbit Club Financial Status to the best of my knowledge.

Doreen Bengtson, Secretary/Treasurer

Enclosed in this Dutch Reporter is a very important ballot for you to return to Doreen Bengtson. As a Dutch Club member it is your responsibility to cast your vote. REMEMBER she needs this by Sept 15, so I would suggest that you have it postmarked by Sept. 10 at the latest. Mail can take up to a week to arrive at its destination. I have found that out by some of the postmarks of mail from the American Dutch Rabbit Club membership.

Weather for the most part has been near perfect for the bunnies in Wisconsin. There have only been a few really hot and humid days. This is not so in many other parts of the country. Many of you are dealing with floods, heat, humidity and droughts. It is important to make your rabbits as comfortable as possible. This may be a time to cull very closely, as overcrowding adds to stress.

Look for the Hall of Fame application. Be prepared to turn one in for your favorite Dutch person in Peoria. Doreen will be collecting them there. Dan and Dawn Schwartz will need your banquet reservations and donations towards specials very, very soon. Please look for that info in this DR.

Thanks to the Ohio State Dutch Rabbit Club as they are taking on another NDS for 1997. We all should be very thankful for their willingness to "go that extra mile" and do the national show two years in a row. Please won't you lend a hand to help, through your donations for specials and advertisements for their show catalog? Most clubs need to fund raise for at least 2 - 3 years before taking on the NDS, and they won't have that chance.

Thanks again, to all of you who submitted the excellent articles contained in this issue. Keep them coming. Those of you who are editors of Dutch specialty club newsletters — put me on your mailing list, as I can keep the entire membership informed of your happenings.

Read your director's reports carefully and be sure to let your officers and directors know if you have any special concerns. And most of all REMEMBER TO CAST YOUR VOTE!



**DAFFY DILL'S RABBITRY**

VERN & MARTI DILL  
125 Colby Drive  
Huntsville, AL 35810

(205) 852-2383



9/96

**Best Opposite Gray - '87 NDS**  
**Best Opposite Gray - '88 NDS**  
**Best Steel - '88 NDS**

**BERGENE RABBITRY**

**QUALITY DUTCH**

30165 West 154th Street  
Gardner, KS 66030



12/96

**(913)884-2131**

*Also:*

Palominos  
Holland Lops  
New Zealand  
Whites

**THE SCHWARTZ FAMILY  
RABBITS FOR FUN**

Dan, Dawn, Clarke & Paige Schwartz  
13526 South Tara Drive  
Lockport, IL. 60441  
(708)301-7752



**DUTCH**

*BOB & Best Fur 1994 ARBA Convention Tulsa, OK  
1st Place 1994 & 1995 Illinois BOB Sweepstakes  
1st Place 1994 & 1995 Illinois BOS Sweepstakes*

**Specializing in Blacks & Blues**

12/96

**MULLINAX  
DUTCH**

**FRED & KATHY**  
*(704) 732-1554*

105-A Easy View Drive  
Lincolnton, North Carolina 28092



**FRED: President ADRC**

9/96

**Here's a spot for  
your new ad!  
Contact the Dutch  
Reporter Editor  
and you can have  
this spot next  
time.**

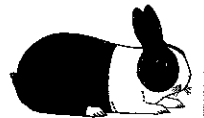
**Quality Dutch in all Colors**

**K**evin **H**ooper  
ARBA Registrar

**Satisfaction Guaranteed!!  
Will Ship**

**Breeding Dutch Since 1975**

Best Display '91, '92, '95, '96 NDS  
Best Display '94 ARBA Conv.  
Best Fur '90, '92 ARBA Conv.  
Best Fur '92 NDS  
Best Chocolate '93 NDS  
Best Gray '93, '94, '96 NDS  
Best Tort '95 NDS, '95 ARBA Conv.



7661 State Route 350  
New Vienna, OH 45159  
**(513) 987-2244**

12/96



**ROY McCLUNG**  
Rt. 3 Box 96  
Seymour, Texas 76380  
817/888-5685

# ADRC PUBLICITY ITEM ORDER FORM



NAME \_\_\_\_\_

ADDRESS \_\_\_\_\_

CITY \_\_\_\_\_ STATE \_\_\_\_\_ ZIP \_\_\_\_\_

PHONE \_\_\_\_\_

NAME OF ITEM	PRICE	QUANTITY	SIZE	COLOR	COST
Pedigree Book	\$6.50				
Arm Patches (Black/Blue/Chocolate)	\$3.25				
Dutch Decal (outside)	\$1.50				
Scratch Pads	\$1.25				
Dutch Lapel Pin (Black, Blue, Choc, Tort)	\$2.00				
Caps (Grey/Natural)	\$6.25				
Adult T-Shirts (White or Blue) Lg/XL	\$12.50				
Dutch Glass Mugs	\$6.75				
Dutch Glass Cups (stackable)	\$4.50				
Adult Sweatshirts: Grey S-M-L	\$22.00				
<i>NEW</i> Polo Shirts (Lt. Blue or Silver) M,L,XL	\$25.00				
<i>NEW</i> Sweatshirts (White) M,L,XL	\$22.00				
<i>NEW</i> Jacket (Grey) M, L,XL	\$35.00				
<i>NEW</i> Apron	\$13.00				
<b>Limited time-Dutch Slates</b> All Six Colors	\$20.00				
<b>SUB-TOTAL \$ _____ PLUS 15% Handling Charge \$ _____ TOTAL \$ _____</b>					

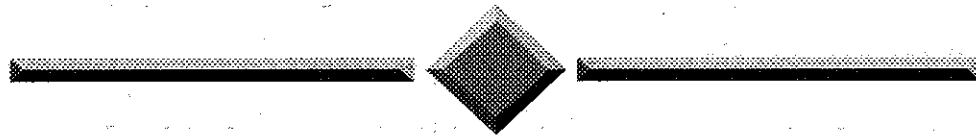
Mail this form with your check made out to  
ADRC PUBLICITY & mail to



Rick & Julie Billups  
1219 Willis Branch Road  
Goodlettsville, TN 37072  
Phone & Fax (615)859-8619



*VOTE  
SUE STRANDWITZ  
ADRC DIRECTOR  
DISTRICT #2*



*ADRC Life Member  
ADRC Youth Supporter  
General Chairperson 1995 NDS (Oshkosh)  
Committed to improvement  
Strives for excellence  
Vote for Progress, Vote for Sue!*

*Compliments of:*

*Larry & Doreen Bengtson  
Roger Guetschow  
Erik Bengtson  
Julia Anderson  
Mandy Anderson*



# HALL OF FAME NOMINATION FORM

## AMERICAN DUTCH RABBIT CLUB

*(All forms must be complete and postmarked by Jan. 10 to be considered for that year.)*

**Please fill out completely and be sure to print clearly.** (use additional paper if more room is needed)

Date: \_\_\_\_\_

NAME OF NOMINEE \_\_\_\_\_ AGE OF NOMINEE \_\_\_\_\_

PRINCIPAL RESIDENCE \_\_\_\_\_  
\_\_\_\_\_

WHY SHOULD THIS NOMINEE BE CONSIDERED? \_\_\_\_\_  
\_\_\_\_\_  
\_\_\_\_\_  
\_\_\_\_\_  
\_\_\_\_\_

NUMBER OF YEARS NOMINEE HAS BEEN MEMBER OF ADRC \_\_\_\_\_

NUMBER OF YEARS NOMINEE HAS RAISED AND SHOWED DUTCH RABBITS \_\_\_\_\_

ACTIVITIES IN ADRC, STATE DUTCH CLUB OR LOCAL RABBIT CLUB \_\_\_\_\_  
\_\_\_\_\_  
\_\_\_\_\_

BRIEF AUTO BIOGRAPHY OF NOMINEE \_\_\_\_\_  
\_\_\_\_\_  
\_\_\_\_\_  
\_\_\_\_\_  
\_\_\_\_\_  
\_\_\_\_\_

**NAME AND ADDRESS OF TEN AMERICAN DUTCH RABBIT CLUB MEMBERS THAT ARE RECOMMENDING NOMINEE. THESE MEMBERS MUST BE IN GOOD STANDING.**

- ① \_\_\_\_\_
- ② \_\_\_\_\_
- ③ \_\_\_\_\_
- ④ \_\_\_\_\_
- ⑤ \_\_\_\_\_
- ⑥ \_\_\_\_\_
- ⑦ \_\_\_\_\_
- ⑧ \_\_\_\_\_
- ⑨ \_\_\_\_\_
- ⑩ \_\_\_\_\_

**VERIFICATION  
ADRC SECRETARY**

**PLEASE MAIL NOMINATION PAPERS BY JAN.10 TO:  
ADRC SECRETARY, Doreen Bengtson  
Rt 1 Box 95 Lewiston, MN 55952  
(507)864-2103**

**APPLICATION PROCESS**

- 1-Nomination form can appear in the Dutch Reporter once a year.
- 2-Ten ADRC members in good standing to endorse Nominee.
- 3-Brief Biography must accompany Nomination form.
- 4-Completely filled out nomination form to be returned to ADRC secretary for verification.
- 5-Verified nomination form forwarded to Committee Chairman for voting.
- 6-Nominee must have been a member in good standing for fifteen years minimum.
- 7-Any member of any age or sex may be nominated for induction.

## REMEMBERING WARREN MCNAMARA

The American Dutch Rabbit Club lost another long time Dutch fancier in June. Mr. Warren McNamara of Reistertown, Maryland passed the that final Dutch show in the sky. Warren was one of those quiet supportive people that are always there when you need them. He joined the ADRC in February of 1961. He was active in breeding those old favorite chocolate Dutch. Warren is one of the Eastern Dutch Rabbit Fanciers, and he was always there when the Eastern Dutchmen "did" a National Dutch Show. He served a stint as the secretary treasurer of the Eastern club. Warren also served as a director of the American Dutch Rabbit Club. In his term as a director he displayed the ability to always keep things on an even keel. He was a strong supporter of the organization at all times, and was one of those old-timers that could spend hours and hours "talking Dutch." We are richer for having known Warren and will miss him. By the way, he could "put out" a really classy chocolate Dutch every once in a while. Our sympathy to the MacNamara family.

## COMPLETE BALLOT LISTING

*(Must be in to Doreen Bengtson no later than 9-15-96)*

District Director's names will appear on ballots specific to that district only. Some districts will be voting for President only on this ballot. There will be a write in space for District One Director for suggestion purposes only since no candidate has come forward in that district. Candidates are listed in alphabetical order.

### OFFICE OF PRESIDENT

3 year term

### OFFICE OF DISTRICT ONE DIRECTOR

3 year term

*NO PETITIONS RECEIVED*

For Suggestions purposes only

### OFFICE OF DISTRICT TWO DIRECTOR

3 year term

Rick Billups  
Sue Strandwitz

### OFFICE OF DISTRICT THREE DIRECTOR

3 year term

Briony Barnes  
Fran Schettler

**Please read your ballot instructions and PLEASE VOTE!**



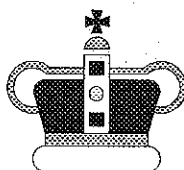
### 1996 DUTCH YOUTH ROYALTY WINNERS

Queen: Angie Aisbet King: Robert Woods

Princess: Jessica Aisbet, Jenica Hurst Prince: Richie Cruz Duke: Clark Schwartz

Lady: Jaque Peters

Judges: Todd Uran and Tammy Wise



## DUTCH REPORTER ADS THAT HAVE EXPIRED OR ARE EXPIRING:

M J Dill

Eric & Sharon Mixdorf

Bass Equipment

Darell & Karen Gates

Fred & Kathy Mullinax

Tony Micallef

Dowd's Dutch

TW Rabbitry

Amber Miskell

Please renew promptly! Thanks for your support of the American Dutch Rabbit Club through your advertisement.



# 1997 NATIONAL DUTCH SHOW

The Ohio State Dutch Rabbit Club will be your host for the 1997 National Dutch Show on May 2 - 4 in Greenville, Ohio. The **Headquarters Hotel** will be the **Greenville Inn**. (513)548-3613 as before. There will also be a new **Comfort Inn** opening this Fall. Due to the short amount of time that we have to prepare and conduct our fund raisers, we will be asking for donations of all kinds. For a donation of **\$50.00** you can sponsor the variety of your choice (first come basis). The fifty dollar donation will cover a Best of Variety and Best Opp. Variety plaque in either the open or youth along with a free 1/4 page ad in the catalog. Any and all donations will be greatly appreciated. Please make out checks to the Ohio National Dutch Show and mail all donations to Kevin Hooper at the following address: 7661 State Route 350 New Vienna, Ohio 45159.

Next year we will not be mailing catalogs out to the exhibitors automatically who showed in the 1996 NDS. Those individuals wanting a catalog will need to mail a request along with **\$3.00** to the following address: **Julie Billups 1219 Willis Branch Road Goodlettsville, TN 37072.**

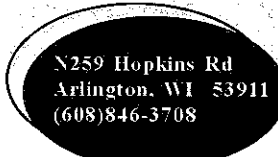

The catalog will be mailed free to those members who place a 1/4 page ad or larger in the 1997 catalog. **Catalog ads** for the 1997 NDS catalog should be mailed to Kevin Hooper and the cost will be as follows:

1/6 page \$10.00  
 1/4 page \$15.00  
 1/2 page \$25.00  
 Full page \$40.00  
 Inside front or back cover \$45.00

We have secured two of the three open judges: Scott Williamson and Richard Gehr.


Look for more information in the next issue and at the ARBA convention.


H O B E Y	<b>Jack &amp; Ruth Wireman</b> of <b>Jack's Bunnies</b>	6/97	H O B E Y
			
5475 Seeman St. SW Navaree, OH 44662		<b>(330)484-1397</b>	No Shipping 45+ years

	<b>ROGER GUETSCHOW DUTCH</b> EMPHASIS ON TYPE Dutch Breeder since 1960 All 6 Colors	6/97
N259 Hopkins Rd Arlington, WI 53911 (608)846-3708		

<b>TONY MICALLEF</b>	<b>Quality Dutch Rabbits</b> 18250 Bethel Church Rd Manchester, MI 48158 <u>Black, Blue, Chocolate, Tort</u>	9/96
313428-7524		

*\$12 will buy this spot for one year in the Dutch Reporter!*

	<b>nawkeye dutch rabbitry</b> (319) 234-6937 Quality Dutch AND HAVANAS	9/96
SHARON & ERIC MIXDORF 1357 Huntington Rd Waterloo, IA 50701		

	<b>DUTCH</b>	12/96
<b>J M Bunny Farm</b>		
<i>ARBA Registered</i>		
Jess McCune Bill McCune Kim McCune	2035 - 370th Street Spencer, IA 51301 (712)262-1403	

<b>L'IL RED DUTCH HUTCH</b>		
		
<b>GORDON &amp; MARILYN HAMERSLEY</b>		
24931 Woodfield School Road Gaithersburg, MD 20882 <b>(301) 253-3716</b>		
		6/97



# Husbandry of the RABBIT

## Part 5

By Janet Amundson Romich,  
DVM, MS

Professor, Madison Area Technical  
College, Madison, WI

Laura Ayers, CVT  
National Wildlife Health Laboratory,  
Madison, WI

## BACTERIAL DISEASES

### STAPHYLOCOCCUS INFECTIONS

*Staphylococcus aureus* is a common organism found in lesions in rabbits. Young rabbits affected with the septicemic form of *S. aureus* generally die. Clinical signs in cases of acute septicemia usually include fever, depressions, and anorexia. Rabbits with this form of infection usually succumb within one week of the onset of clinical signs.

Rabbits may be infected with *S. aureus* but show little or no signs of clinical disease. Conjunctivitis may be the only evident clinical sign. In older rabbits, infection may involve almost any organ or tissue. Abscesses commonly contain *Staphylococcus* organisms. Mastitis has also been linked to *Staphylococcus* infections. In some cases, the infection may develop to septicemia and rapid death. Kits should not be fostered to another mother because the organism can be spread by the kits to the foster mother. Skin lesions are also evident with *Staphylococcus* infection. Diagnosis of the organism is by culture, and treatment of patients is similar to treatment of animals infected with *Pasteurella*, pending sensitivity testing.

### TREPONEMATOSIS

Treponematosis, or rabbit syphilis, is a venereal disease of domesticated rabbits. The disease clinically appears as scabbed external genitalia and genital ulcers and occurs in both sexes. Lesions may also be evident near the ears, nose, eyes, and lips. The disease is transmitted by coitus as

well as from mother to offspring. Treponematosis is caused by the spirochete *Treponema cuniculi*, which can be observed using dark-field microscopy. Treatment of patients is attempted with subcutaneous penicillin injections, which may eradicate the organism in individuals, but all rabbits in the herd must be treated to eliminate the disease entirely.

### TYZZER'S DISEASE

Tyzzler's disease is characterized by profuse diarrhea, anorexia, dehydration, lassitude, and death within one to three days. Tyzzler's disease was once believed to be caused by the enteric bacteria *Bacillus piliformis* but has been reclassified as an infection caused by *Clostridium piliforme*. The disease is uncommon in pet rabbits and is usually diagnosed at necropsy.

### BORDETELLA BRONCHISEPTICA

Rabbits can be asymptomatic carriers of *Bordetella* bacteria. Transmission of *Bordetella bronchiseptica* occurs via direct contact or aerosolization; incubation of the organism is five to seven days. Clinical signs of the disease may include rapid death, nasal and ocular discharge, dyspnea, abortion, and stillbirth. Treatment of infected patients is accomplished by injectable trimethoprim-sulfa and supportive care. Isolation of affected animals is important. The disease is rapidly fatal in guinea pigs; therefore, guinea pigs and rabbits should not be housed together.

### ENTERIC DISEASES

*Enteric complex* is a general term used to describe gastrointestinal problems in rabbits. Many diseases (e.g., infectious, iatrogenic, and environmental) have clinical signs that include diarrhea. Infectious diseases, such as rotavirus, coccidiosis, and bacterial diseases (e.g., *Clostridium* species and *Escherichia coli*) are evident in young, stressed animals. Iatrogenic causes of diarrhea secondary to antibiotic treatment may be seen with such agents as penicillin,

ampicillin, erythromycin, clindamycin, and lincomycin. Environmental alterations (pertaining to changes in diet and temperature stresses) may also affect fecal consistency. These factors, usually in the presence of stress, can predispose rabbits to the development of enteric complex.

Acute enteropathies generally affect very young or weanling rabbits. Lassitude, rough haircoat a perineal area covered with a greenish brown fecal material, a watery feel when the animal is palpated, and death within 48 hours is evident clinically. Rabbits pass soft stools (cecotrophs) at night; cecotrophs should not be confused with signs associated with acute enteropathy. Also, soft stools passed at certain times of the day, mixed with normal stools, may be caused by a diet that is too low in fiber. Enteropathies are evident less often in animals that are fed a high fiber diet.

Treatment varies with the presentation of the disease and age of the animal. Treatment of patients may include maintaining food intake with an increase in the fiber content of the food, fluid therapy, and a repopulation of normal gastrointestinal flora by feeding fecal material from a healthy rabbit. (Night stools from a healthy individual are best.)

Trichobezoar or hair accumulation in the stomach of mature rabbits can also cause gastrointestinal problems. The reasons rabbits ingest hair can range from a nutritional deficiency to boredom. Clinical signs often include anorexia, oligodipsia, bloat, hypothermia, weight loss, agalactia, depressions, and absence of feces or diarrhea. Death from starvation and metabolic abnormalities may occur in three to four weeks. Diagnosis, which may be difficult, is generally based on clinical signs and radiographic examination. Treating patients with fresh pineapple juice or papaya enzyme tablets (if the rabbit is still eating) may be helpful. Pineapple juice contains the enzyme bromelain, which seems to help break up the hair ball. In terminal cases, gastronomy and hair ball removal can be attempted but is associated with high mortality. Prevention of trichobezoar is accomplished by providing rabbits with quality grass hay and changing the diet to high-fiber feed.

1996 OPEN SWEEPSTAKES STANDINGS

<u>NAME</u>	<u>STATE</u>	<u>SHOWS</u>	<u>POINTS</u>
1. Jim & Fran Schettler	CA	15	4630
2. Ricky Wood	VA	18	6778
3. Kevin Hooper	OH	12	6662
4. Wenton Carlton	AZ	20	6338
5. Jill Dobson	CA	15	4252
6. John Eubank	CA	19	3710
7. Ed McKinley	MI	6	3645
8. Stan Burke	NV	22	3581
9. Robert Worden	IN	8	3558
10. Mike & Donna Brak	WA	15	3501
11. Betty Hoagland-Wetzel	MN	12	3038
12. Todd Uran	OH	6	2690
13. Dennis McAtee	IA	11	2327
14. Valerie Dahl	CT	10	2322
15. Dan & Dawn Schwartz	IL	11	2236
16. Duane & Teresa Kikkert	IN	20	2054
17. Troy Ihrke	MN	10	2048
18. Courtney Lewis (Y)	CA	13	1905
19. R & K Rabbitry	IN	9	1825
20. Fred & Kathy Mullinax	NC	6	1820

1996 YOUTH SWEEPSTAKES STANDINGS

<u>NAME</u>	<u>STATE</u>	<u>SHOWS</u>	<u>POINTS</u>
1. Robert Woods	IL	25	4629
2. Emily Smith	MI	12	3420
3. Sara Sparks	TX	6	2607
4. Katie Graveen	WI	10	2442
5. Nick Wenger	MN	15	2366
6. Jenica Hurst	IN	8	2317
7. Amy Regelin	MI	12	2031
8. Julie Toth	CA	10	1958
9. J. Brown & J. Caldwell	NC	1	1652
10. Valerie Worzella	WI	12	1581
11. Megan Gottschalk	MI	11	1424
12. Cody Lape	OH	8	1392
13. Jess McCune	IA	5	1253
14. Richie Cruz	NJ	6	1199
15. Kelli Slack	IN	11	1178
16. Emily Hederstedt	KS	7	1165
17. Courtney Lewis	CA	7	959
18. Jennifer Pummill	OH	10	926
19. Jessica Gittleman	NJ	9	904
20. Bryan & Tambria Lugo	CA	12	838

# OPEN SHOW REPORTS

**\*\*\* CORRECTION \*\*\***

DATE: 3-2-96  
 SHOW: NW GA C&RC-Show #2  
 WHERE: Dalton, GA  
 JUDGE: L Franklin  
 DUTCH: 51  
 BOB: Choc JB Wood  
 BOS: Choc SD Schultheis  
 BLACK: 12 JD Dill  
 BLUE: 17 SD McKenna  
 CHOC: 6 JB Wood  
 BR/GRAY: 6 SD Drake  
 STEEL: 2 JD Wood  
 TORT: 8 SD Wood

**\*\*\* CORRECTION \*\*\***

DATE: 3-9-96  
 SHOW: Olympic R&CF  
 WHERE: Chehalis, WA  
 JUDGE: J Coffelt  
 DUTCH: 29  
 BOB: Blue JD Johnston  
 BOS: Blk SB Nelson  
 BLACK: 9 SD Nelson  
 BLUE: 6 JD Johnston  
 CHOC: 10 SB NM  
 STEEL: 1 JB NM  
 TORT: 3 SB Nelson

DATE: 2-10-96  
 SHOW: Juniper Country R&CA  
 WHERE: Bend, OR  
 JUDGE: T Keyes  
 DUTCH: 22  
 BOB: Blk JD NM  
 BOS: Blue SD NM  
 BLACK: 7 JD NM  
 BLUE: 4 JB NM  
 TORT: 6 SB NM  
 BR/GRAY: 5 SB Cadena

DATE: 3-9-96  
 SHOW: Long Island RBA  
 WHERE: Bethpage, NY  
 JUDGE: R Frizzel  
 DUTCH: 5  
 ALL WINNERS NM

DATE: 3-16-96  
 SHOW: S. Central Iowa RBA  
 WHERE: Winterset, IA  
 JUDGE: M Avesing  
 DUTCH: 61  
 BOB: Br/Gray JD McAtee  
 BOS: Blk SB NM  
 BLACK: 18 SB NM  
 BLUE: 4 JB E&S Mixdorf  
 CHOC: 17 SB NM  
 TORT: 4 SB Larson  
 STEEL: 8 SB McAtee  
 BR/GRAY: 10 JD McAtee

DATE: 3-17-96  
 SHOW: Great Falls RBA  
 WHERE: Great Falls, MT  
 JUDGE: J Coffelt  
 DUTCH: 7  
 BOB: Blk SD Littlepage  
 BOS: Blk SB Littlepage

BLACK: 4 SD Littlepage  
 CHOC: 3 SB NM

DATE: 3-17-96  
 SHOW: Great Falls RBA  
 WHERE: Great Falls, MT  
 JUDGE: G Spencer  
 DUTCH: 7  
 BOB: Blk SD Littlepage  
 BOS: Blk JB Thompson  
 BLACK: 4 SD Littlepage  
 CHOC: 3 SB NM

DATE: 3-17-96  
 SHOW: Washington Co Yth RBA  
 WHERE: Washington, PA  
 JUDGE: B Patrick  
 DUTCH: 19  
 BOB: Br/Gray JB NM  
 BOS: Blue SD Imes  
 BLACK: 3 JD NM  
 BLUE: 7 SB NM  
 CHOC: 2 SB NM  
 TORT: 2 SB Imes  
 BR/GRAY: 5 JB NM

DATE: 3-23-96  
 SHOW: Tri Cities RA  
 WHERE: Kennewick, WA  
 JUDGE: D Kaiser  
 DUTCH: 63  
 BOB: Blk JB Harris  
 BOS: Blue JD Brak  
 BLACK: 19 JB Harris  
 BLUE: 13 JD Brak  
 BR/GRAY: 7 JD NM  
 CHOC: 11 SD Young  
 STEEL: 5 JB R&J Coffelt  
 TORT: 8 SB L/Loucks

DATE: 3-23-96  
 SHOW: Tri Cities RA  
 WHERE: Kennewick, WA  
 JUDGE: F Rudolph  
 DUTCH: 68  
 BOB: Blue JD M&D Brak  
 BOS: Steel JB R&J Coffelt  
 BLACK: 23 SB M&D Brak  
 BLUE: 13 JD M&D Brak  
 BR/GRAY: 7 SD J/Loucks  
 CHOC: 12 SD Young  
 STEEL: 5 JB R&J Coffelt  
 TORT: 8 SB Harris

DATE: 3-23-96  
 SHOW: Southside VA RB  
 WHERE: Chesterfield, VA  
 JUDGE: L Bengtson  
 DUTCH: 49  
 BOB: Steel SD Wood  
 BOS: Br/Gray SB Wood  
 BLACK: 14 JD NM  
 BLUE: 9 SB Wood  
 CHOC: 12 JB Wood  
 BR/GRAY: 2 SB Wood  
 STEEL: 4 SD Wood  
 TORT: 8 SB Wood

DATE: 3-23-96  
 SHOW: Southside VA RB  
 WHERE: Chesterfield, VA  
 JUDGE: F DeMastro

DUTCH: 44  
 BOB: Blue JD Wood  
 BOS: Br/Gray SB Wood  
 BLACK: 11 SB Wood  
 BLUE: 9 JD Wood  
 CHOC: 10 SD Crawford  
 BR/GRAY: 2 SB Wood  
 STEEL: 4 JD Wood  
 TORT: 8 SB NM

DATE: 3-23-96  
 SHOW: Lapeer Area RR  
 WHERE: Lapeer, MI  
 JUDGE: W Bouwkamp  
 DUTCH: 42  
 BOB: Tort SB McKinley  
 BOS: Blk JD McKinley  
 BLACK: 15 JB T&D Recker  
 BLUE: 11 JB Dietrich  
 CHOC: 2 SD McKinley  
 TORT: 9 SB McKinley  
 STEEL: 3 SB Bowers  
 BR/GRAY: 2 SD Bowers

DATE: 3-23-96  
 SHOW: Empire State RBA  
 WHERE: Fulton, NY  
 JUDGE: C Hayhow  
 DUTCH: 29  
 BOB: Blk SB K&D Emerson  
 BOS: Blk SD K&D Emerson  
 BLACK: 12 SB K&D Emerson  
 BLUE: 6 JB K&D Emerson  
 CHOC: 3 SD C,J&R Andrews  
 BR/GRAY: 1 SB Schilling  
 STEEL: 1 SB Schilling  
 TORT: 6 SB Schilling

DATE: 3-23-96  
 SHOW: Decatur RBA  
 WHERE: Lawrenceville, GA  
 JUDGE: J Green  
 DUTCH: 28  
 BOB: Tort SD R&M Brewer  
 BOS: Blk SB Schultheis  
 BLACK: 7 SB Schultheis  
 BLUE: 7 JD Davison  
 CHOC: 1 SB R&M Brewer  
 BR/GRAY: 5 SB NM  
 STEEL: 3 SB R&M Brewer  
 TORT: 5 SD R&M Brewer

DATE: 3-23-96  
 SHOW: Decatur RBA  
 WHERE: Lawrenceville, GA  
 JUDGE: D Cardinal  
 DUTCH: 28  
 BOB: Tort SD R&M Brewer  
 BOS: Br/Gray SB Daniels  
 BLACK: 7 SB Schultheis  
 BLUE: 7 JB Schultheis  
 CHOC: 1 SB R&M Brewer  
 BR/GRAY: 5 SD Daniels  
 STEEL: 3 SD R&M Brewer  
 TORT: 5 SD R&M Brewer

DATE: 3-23-96  
 SHOW: So University RA  
 WHERE: Baton Rouge, LA  
 JUDGE: R Gehr  
 DUTCH: 9  
 BOB: Blk SD Molinere

BOS: Blue SB Molinere  
 BLACK: 5 SD Molinere  
 BLUE: 1 SB Molinere  
 CHOC: 3 JD Molinere

DATE: 3-23-96  
 SHOW: Central Valley RBA  
 WHERE: Hanford, CA  
 JUDGE: D King  
 DUTCH: 94  
 BOB: Tort SB J&F Schettler  
 BOS: Blk SD Toth  
 BLACK: 40 SD Toth  
 BLUE: 21 JD NM  
 CHOC: 8 JD J&F Schettler  
 BR/GRAY: 13 JD Eubank  
 STEEL: 5 SD Puente  
 TORT: 7 SB J&F Schettler

DATE: 3-23-96  
 SHOW: Central Valley RBA  
 WHERE: Hanford, CA  
 JUDGE: S Byrom  
 DUTCH: 54  
 BOB: Tort SB J&F Schettler  
 BOS: Br/Gray JD Baird  
 BLACK: 22 SB Robinson  
 BLUE: 11 JB J&F Schettler  
 BR/GRAY: 8 JD Baird  
 CHOC: 6 JD J&F Schettler  
 STEEL: 1 SB J&F Schettler  
 TORT: 6 SB J&F Schettler

DATE: 3-23-96  
 SHOW: N. Central IN RBA  
 WHERE: Goshen, IN  
 JUDGE: G Raisor  
 DUTCH: 88  
 BOB: Blk SB Worden  
 BOS: Blue SD T&D Kikkert  
 BLACK: 18 SB Worden  
 BLUE: 27 SB Worden  
 CHOC: 16 SB Hewson  
 TORT: 13 SB Hewson  
 STEEL: 5 SD Dangler  
 BR/GRAY: 9 JB Miller

DATE: 3-23-96  
 SHOW: Kansas Dutch RC  
 WHERE: Lawrence, KS  
 JUDGE: D Kroenke  
 DUTCH: 58  
 BOB: Blue JB Clark  
 BOS: Tort JD M&M Cole  
 BLACK: 22 JB Clark  
 BLUE: 14 JB Clark  
 CHOC: 4 JD Everton  
 TORT: 15 JB M&M Cole  
 STEEL: 1 SB NM  
 BR/GRAY: 2 SB NM

DATE: 3-23-96  
 SHOW: Golden Country RBA  
 WHERE: Gridley, CA  
 JUDGE: C Wickizer  
 DUTCH: 23  
 BOB: Blk SD Trout  
 BOS: Br/Gray JB Burke  
 BLACK: 4 SD Trout  
 BLUE: 2 SB Garcia  
 BR/GRAY: 7 JD Garcia  
 \*\*\* Cont'd next page \*\*\*

**OPEN SHOW REPORTS**

CHOC: 7 JB Burke  
 STEEL: 2 JD Burke  
 TORT: 1 JB DQ

DATE: 3-23-96  
 SHOW: Hoosier Dutch RF  
 WHERE: Goshen, IN  
 JUDGE: D Havlicek  
 DUTCH: 74  
 BOB: Blue SD D&T Kikkert  
 BOS: Choc JB K&G Cummings  
 BLACK: 17 JB K&K O'Dell  
 BLUE: 22 SD D&T Kikkert  
 CHOC: 14 SD K&K O'Dell  
 TORT: 11 JD R&K Rabbitry  
 STEEL: 2 SD Miller  
 BR/GRAY: 8 JB K&G Cummings

DATE: 3-23-96  
 SHOW: Golden Country RBA  
 WHERE: Gridley, CA  
 JUDGE: S Brown  
 DUTCH: 25  
 BOB: Blk SB Burke  
 BOS: Br/Gray JD Garcia  
 BLACK: 6 SB Burke  
 BLUE: 2 SB Garcia  
 BR/GRAY: 7 JB Burke  
 CHOC: 7 JB Burke  
 STEEL: 2 JD Burke  
 TORT: 1 JB DQ

DATE: 3-23-96  
 SHOW: Capital City RC  
 WHERE: Lawrence, KS  
 JUDGE: R Koch  
 DUTCH: 32  
 BOB: Blk SB E&T Bogart  
 BOS: Blue JD Clark  
 BLACK: 13 SB E&T Bogart  
 BLUE: 9 JD Clark  
 CHOC: 2 JB NM  
 BR/GRAY: 1 SB Tackett  
 TORT: 7 JD M&M Cole

DATE: 3-24-96  
 SHOW: Massachusetts Fed R&C  
 WHERE: Taunton, MA  
 JUDGE: A Platt  
 DUTCH: 61  
 BOB: Tort SD MacKinnon  
 BOS: Blue SB NM  
 BLACK: 21 SB NM  
 BLUE: 10 SD MacKinnon  
 CHOC: 12 JD MacKinnon  
 BR/GRAY: 3 JB Dahl  
 STEEL: 2 SD Dahl  
 TORT: 13 SD MacKinnon

DATE: 3-24-96  
 SHOW: Whiteside Co RBA  
 WHERE: Sterling, IL  
 JUDGE: M Wunderlin  
 DUTCH: 47  
 BOB: Blk JB D&D Schwartz  
 BOS: Br/Gray SD McAtee  
 BLACK: 20 JB D&D Schwartz  
 BLUE: 7 SB Poole  
 CHOC: 1 JB DQ  
 BR/GRAY: 6 SD McAtee  
 STEEL: 6 JD McAtee  
 TORT: 7 JD Graflund

DATE: 3-24-96  
 SHOW: Mid Ohio RBA  
 WHERE: London, OH  
 JUDGE: B Patrick  
 DUTCH: 62  
 BOB: Tort SD Hooper  
 BOS: Blue SB Hooper  
 BLACK: 18 SB J&T Wise  
 BLUE: 11 SD Hooper  
 CHOC: 7 SD J&T Wise  
 TORT: 6 SD Hooper  
 STEEL: 10 JB NM  
 BR/GRAY: 10 SB Barton

DATE: 3-30-96  
 SHOW: Pacific Rim R&CBA  
 WHERE: Langley, BC Canada  
 JUDGE: F Roberts  
 DUTCH: 34  
 BOB: Blk JD Currie  
 BOS: Blue SB Moreau  
 BLACK: 13 JD Currie  
 BLUE: 10 SB Moreau  
 CHOC: 5 SB NM  
 TORT: 2 JB Thomas  
 STEEL: 2 JD NM  
 BR/GRAY: 2 SB NM

DATE: 3-30-96  
 SHOW: Rio Grande Valley RA  
 WHERE: Albuquerque, NM  
 JUDGE: M Avesing  
 DUTCH: 18  
 BOB: Blk JD Carlton  
 BOS: Choc JB Carlton  
 BLACK: 6 JD Carlton  
 BR/GRAY: 1 JD Carlton  
 CHOC: 8 JB Carlton  
 STEEL: 1 SB Carlton  
 TORT: 2 SB Carlton

DATE: 3-30-96  
 SHOW: Rio Grande Valley RA  
 WHERE: Albuquerque, NM  
 JUDGE: T Connolly  
 DUTCH: 23  
 BOB: Choc JB Carlton  
 BOS: Choc JD Carlton  
 BLACK: 8 JD Carlton  
 BR/GRAY: 3 SD NM  
 CHOC: 8 JB Carlton  
 STEEL: 1 SB Carlton  
 TORT: 3 SB Carlton

DATE: 3-30-96  
 SHOW: Motherlode RBA  
 WHERE: Placerville, CA  
 JUDGE: B Talley  
 DUTCH: 27  
 BOB: Blk JD NM  
 BOS: Blk SB Burke  
 BLACK: 5 JD NM  
 BLUE: 4 SD NM  
 CHOC: 9 SB NM  
 BR/GRAY: 5 SB Burke  
 STEEL: 3 JD Burke  
 TORT: 1 SB Bennett

DATE: 3-30-96  
 SHOW: Mountain Meadow R&CC  
 WHERE: Nampa, ID  
 JUDGE: F Rudolph

DUTCH: 25  
 BOB: Blk JD NM  
 BOS: Br/Gray SB NM  
 BLACK: 6 JD NM  
 BLUE: 5 JD L/Loucks  
 CHOC: 2 JD NM  
 BR/GRAY: 5 SD J/Loucks  
 STEEL: 2 SD J/Loucks  
 TORT: 5 SB L/Loucks

DATE: 3-30-96  
 SHOW: Greater Gulf Coast RB  
 WHERE: Gautier, MS  
 JUDGE: R Westoff  
 DUTCH: 12  
 BOB: Choc JD Molinere  
 BOS: Br/Gray SB C/Dennis  
 BLACK: 4 JD Molinere  
 BLUE: 1 JB NM  
 CHOC: 3 JD Molinere  
 TORT: 1 SB C/Dennis  
 BR/GRAY: 3 SB C/Dennis

DATE: 3-30-96  
 SHOW: Greater Gulf Coast RB  
 WHERE: Gautier, MS  
 JUDGE: C Alexander  
 DUTCH: 12  
 BOB: Blk SD Molinere  
 BOS: Blk JB Molinere  
 BLACK: 4 SD Molinere  
 BLUE: 1 JB NM  
 CHOC: 3 JD Molinere  
 TORT: 1 SB C/Dennis  
 BR/GRAY: 3 SB C/Dennis

DATE: 3-30-96  
 SHOW: Mountain Meadow R&CC  
 WHERE: Nampa, ID  
 JUDGE: D Cardinal  
 DUTCH: 23  
 BOB: Tort SB L/Loucks  
 BOS: Blk JD NM  
 BLACK: 6 JD NM  
 BLUE: 3 JD L/Loucks  
 CHOC: 2 JD NM  
 BR/GRAY: 5 SD J/Loucks  
 STEEL: 2 SD J/Loucks  
 TORT: 5 SB L/Loucks

DATE: 3/30-3/31/96  
 SHOW: Texas RBA  
 WHERE: Belton, TX  
 JUDGE: R Shumaker  
 DUTCH: 43  
 BOB: Blue JB D/Wade  
 BOS: Blue JD D/Wade  
 BLACK: 20 JB NM  
 BLUE: 11 JB D/Wade  
 CHOC: 12 JB D/Wade

DATE: 3-31-96  
 SHOW: Pacific Rim R&CBA  
 WHERE: Langley, BC Canada  
 JUDGE: J Paris  
 DUTCH: 41  
 BOB: Blk SB M&D Brak  
 BOS: Blue JD M&D Brak  
 BLACK: 14 SB M&D Brak  
 BLUE: 13 SB M&D Brak  
 CHOC: 8 JB NM  
 TORT: 3 SB NM

STEEL: 2 JD NM  
 BR/GRAY: 1 SB NM

DATE: 3-31-96  
 SHOW: WMS Co RC  
 WHERE: Montpelier, OH  
 JUDGE: R Allebach  
 DUTCH: 47  
 BOB: Choc SB Uran  
 BOS: Tort JD Uran  
 BLACK: 14 SD NM  
 BLUE: 6 JD NM  
 BR/GRAY: 4 SD Marti  
 CHOC: 6 SB Uran  
 STEEL: 10 JD Uran  
 TORT: 7 JD Uran

DATE: 3-31-96  
 SHOW: Tibbar RBA  
 WHERE: New Lenox, IL  
 JUDGE: J Soper  
 DUTCH: 17  
 BOB: Blk JB D&D Schwartz  
 BOS: Blue JD D&D Schwartz  
 BLACK: 10 JB D&D Schwartz  
 BLUE: 1 JD D&D Schwartz  
 STEEL: 3 SB McAtee  
 BR/GRAY: 3 JB McAtee

DATE: 3-31-96  
 SHOW: Sprigfield R&CBA  
 WHERE: Springfield, OH  
 JUDGE: R Mauck  
 DUTCH: 74  
 BOB: Tort JB Hooper  
 BOS: Steel SD R&J Billups  
 BLACK: 19 SB K&V Bogan  
 BLUE: 16 SB NM  
 CHOC: 10 SB Thompson  
 BR/GRAY: 13 SD Hooper  
 STEEL: 10 SD R&J Billups  
 TORT: 6 JB Hooper

DATE: 3-31-96  
 SHOW: Rochester RBA  
 WHERE: Rochester, NY  
 JUDGE: B Patrick  
 DUTCH: 33  
 BOB: Blk JB NM  
 BOS: Blk JD K&D Emerson  
 BLACK: 14 JB NM  
 BLUE: 6 JB K&D Emerson  
 CHOC: 4 SD C,J&R Andrews  
 TORT: 9 JD NM

DATE: 4-6-96  
 SHOW: Pikes Peak RBA  
 WHERE: Castle Rock, CO  
 JUDGE: R Waggoner  
 DUTCH: 24  
 BOB: Blk JB NM  
 BOS: Blue JD NM  
 BLACK: 7 JB NM  
 BLUE: 8 JD NM  
 BR/GRAY: 3 SD Bean  
 CHOC: 3 SB NM  
 STEEL: 3 SB NM

DATE: 4-6-96  
 SHOW: Tipton Co RBA  
 WHERE: Memphis, TN  
 \*\*\* Cont'd next page \*\*\*

OPEN SHOW REPORTS

JUDGE: C Richenback  
DUTCH: 12  
BOB: Blue SB NM  
BOS: Blk JD Drake  
BLACK: 4 SB NM  
BLUE: 4 SB NM  
CHOC: 1 JD DQ  
TORT: 3 JD Drake

DATE: 4-6-96  
SHOW: Tipton Co RBA  
WHERE: Memphis, TN  
JUDGE: R Westoff  
DUTCH: 7  
BOB: Blk JD Drake  
BOS: Tort JB Drake  
BLACK: 3 JD Drake  
BLUE: 2 SB Drake  
TORT: 2 JD Drake

DATE: 4-6-96  
SHOW: Sierra Foothill R&CBA  
WHERE: Gridley, CA  
JUDGE: R Shumaker  
DUTCH: 44  
BOB: Blk JD Lewis  
BOS: Tort JB J&F Schettler  
BLACK: 14 JD Lewis  
BLUE: 8 SD Lewis  
CHOC: 8 JD NM  
BR/GRAY: 7 JD Garcia  
STEEL: 1 SB DQ  
TORT: 6 JB J&F Schettler

DATE: 4-6-96  
SHOW: S. Carolina State R&CBA  
WHERE: Shelby, NC  
JUDGE: J Green  
DUTCH: 44  
BOB: Choc JB Wood  
BOS: Blk SD F&K Mullinax  
BLACK: 17 SB Wood  
BLUE: 5 JB Wood  
CHOC: 6 JB Wood  
BR/GRAY: 3 SB Wood  
STEEL: 5 SD Wood  
TORT: 8 SB F&K Mullinax

DATE: 4-6-96  
SHOW: Bluegrass RBA  
WHERE: Shelbyville, KY  
JUDGE: R Rhorer  
DUTCH: 11  
BOB: Blk JD Driskell  
BOS: Blk SB Driskell  
BLACK: 4 JD Driskell  
BLUE: 1 SB NM  
CHOC: 1 SB NM  
STEEL: 5 SB Bramble

DATE: 4-6-96  
SHOW: S. Carolina State R&CBA  
WHERE: Shelby, SC  
JUDGE: J Hardin  
DUTCH: 42  
BOB: Blk JB F&K Mullinax  
BOS: Blue JD Wood  
BLACK: 17 JB F&K Mullinax  
BLUE: 4 SB Wood  
CHOC: 5 SD Wood

BR/GRAY: 3 JB F&K Mullinax  
STEEL: 5 JD Wood  
TORT: 8 SB F&K Mullinax

DATE: 4-6-96  
SHOW: Sierra Foothill R&CBA  
WHERE: Gridley, CA  
JUDGE: M Hidalgo  
DUTCH: 44  
BOB: Blk JD Lewis  
BOS: Tort JB J&F Schettler  
BLACK: 14 JD Lewis  
BLUE: 8 JB J&F Schettler  
CHOC: 8 JD Burke  
BR/GRAY: 7 SB J&F Schettler  
STEEL: 1 SB J&F Schettler  
TORT: 6 JB J&F Schettler

DATE: 4-6-96  
SHOW: Golden Prairie RBA  
WHERE: Lafayette, IN  
JUDGE: J Marshall  
DUTCH: 36  
BOB: Blue SD D&T Kikkert  
BOS: Blue JB R&K Rabbitry  
BLACK: 9 SB D&T Kikkert  
BLUE: 8 SD D&T Kikkert  
CHOC: 5 JB Hewson  
BR/GRAY: 6 SB R&K Rabbitry  
STEEL: 1 SB Miller  
TORT: 7 JB R&K Rabbitry

DATE: 4-6-96  
SHOW: NE Tower on the Plains  
WHERE: Seward, NE  
JUDGE: D Kroenke  
DUTCH: 40  
BOB: Choc JD Evertson  
BOS: Tort JB M&M Cole  
BLACK: 15 SB E&T Bogart  
BLUE: 6 JD E&T Bogart  
BR/GRAY: 1 SB Lahmann  
CHOC: 4 JD Evertson  
STEEL: 2 SB Lahmann  
TORT: 12 JB M&M Cole

DATE: 4-6-96  
SHOW: NE Tower on the Plains  
WHERE: Seward, NE  
JUDGE: R Wallace  
DUTCH: 62  
BOB: Choc JD Evertson  
BOS: Blk SB E&T Bogart  
BLACK: 24 JD Stelzer  
BLUE: 16 JB NM  
BR/GRAY: 2 SB Lahmann  
CHOC: 11 JD Evertson  
STEEL: 1 JD NM  
TORT: 8 JD M&M Cole

DATE: 4-6-96  
SHOW: Hoosier Dutch RF  
WHERE: Lafayette, IN  
JUDGE: D Hauser  
DUTCH: 54  
BOB: Blk JD Worden  
BOS: Gray SB R&K Rabbitry  
BLACK: 15 JD Worden  
BLUE: 13 SB Worden  
CHOC: 10 JD F&S Barlow

TORT: 7 JD R&K Rabbitry  
STEEL: 1 JB Miller  
BR/GRAY: 8 SB R&K Rabbitry

DATE: 4-6-96  
SHOW: Champion RC  
WHERE: Wheeling, VA  
JUDGE: C Backus  
DUTCH: 30  
BOB: Blk JB P/Peters  
BOS: Choc SD S/Peters  
BLACK: 9 JB P/Peters  
BLUE: 11 SD Dunmire  
CHOC: 9 SD S/Peters  
STEEL: 1 SD S/Peters

DATE: 4-6-96  
SHOW: Champion RC  
WHERE: Wheeling, WV  
JUDGE: L Trausch  
DUTCH: 28  
BOB: Blk JB P/Peters  
BOS: Choc JD P/Peters  
BLACK: 8 JB P/Peters  
BLUE: 11 JB Dunmire  
CHOC: 8 JB P/Peters  
STEEL: 1 SD S/Peters

DATE: 4/11-4/14/96  
SHOW: Town & Country Fair  
WHERE: Tucson, AZ  
JUDGE: R Allebach  
DUTCH: 32  
BOB: Tort SB Carlton  
BOS: Br/Gray SD Carlton  
BLACK: 8 JB Carlton  
CHOC: 10 SB Carlton  
TORT: 8 SB Carlton  
BR/GRAY: 6 SD Carlton

DATE: 4-13-96  
SHOW: Cattaraugus Co RBA  
WHERE: Olean, NY  
JUDGE: H Keller  
DUTCH: 10  
BOB: Blk SD Hall  
BOS: Tort SB Hirsch  
BLACK: 2 SD Hall  
TORT: 8 JD Hirsch

DATE: 4-13-96  
SHOW: Mid-Jersey R&CBA  
WHERE: Augusta, NJ  
JUDGE: G Fellers  
DUTCH: 55  
BOB: Blue SD Sartori  
BOS: Blk SB Pecaric  
BLACK: 21 SB Pecaric  
BLUE: 12 SD Sartori  
CHOC: 3 SD Dahl  
TORT: 12 SD Orwig  
STEEL: 5 SD NM  
BR/GRAY: 2 SD Dahl

DATE: 4-13-96  
SHOW: Mid-City RC  
WHERE: Yankton, SD  
JUDGE: B Rice  
DUTCH: 16  
BOB: Blk SB M/Grann

BOS: Tort JD M/Grann  
BLACK: 6 SB M/Grann  
BLUE: 4 SB Rydell  
TORT: 2 JD M/Grann  
STEEL: 2 SB Rydell  
BR/GRAY: 2 SD J/Grann

DATE: 4-13-96  
SHOW: 4-H Rabbit Ranchers  
WHERE: Pensacola, FL  
JUDGE: R Westoff  
DUTCH: 6  
BOB: Blk SD Molinere  
BOS: Blk JB Molinere  
BLACK: 4 SD Molinere  
CHOC: 2 SD Molinere

DATE: 4-13-96  
SHOW: Crossroads RBA  
WHERE: Statesville, NC  
JUDGE: J Hardin  
DUTCH: 10  
BOB: Choc JD NM  
BOS: Blk SB NM  
BLACK: 4 JD NM  
CHOC: 2 JD NM  
BR/GRAY: 1 JD NM  
STEEL: 1 SB R&M Brewer  
TORT: 2 SD R&M Brewer

DATE: 4-13-96  
SHOW: San Antonio RBA  
WHERE: Sequin, TX  
JUDGE: W Rome  
DUTCH: 23  
BOB: Blue JD D/Wade  
BOS: Blue JB D/Wade  
BLACK: 9 SB D/Wade  
BLUE: 5 JD D/Wade  
CHOC: 6 SD D/Wade  
BR/GRAY: 2 JB R/Wade  
TORT: 1 JD D/Wade

DATE: 4-13-96  
SHOW: Southern WV RBA  
WHERE: Cottageville, WV  
JUDGE: H Rice  
DUTCH: 64  
BOB: Steel SB NM  
BOS: Blk SD A&S Barton  
BLACK: 22 SB NM  
BLUE: 14 SB McKenna  
CHOC: 18 JD P/Peters  
TORT: 3 SB McKenna  
STEEL: 4 SB NM  
BR/GRAY: 3 SD NM

DATE: 4-13-96  
SHOW: So Colorado RBA  
WHERE: Pueblo, CO  
JUDGE: S Pulliam  
DUTCH: 3  
BOB: Blk JD NM  
BLACK: 1 JD NM  
BLUE: 2 SD Eastman

DATE: 4-13-96  
SHOW: Mid-City RC  
WHERE: Yankton, SD  
\*\*\* Cont'd next page \*\*\*

OPEN SHOW REPORTS

JUDGE: B Wallace  
 DUTCH: 20  
 BOB: Blk JB NM  
 BOS: Blue JD NM  
 BLACK: 8 JB NM  
 BLUE: 4 SB Rydell  
 TORT: 2 SD NM  
 STEEL: 3 SB Rydell  
 BR/GRAY: 3 SD J/Grann

DATE: 4-13-96  
 SHOW: Huntington RBA  
 WHERE: Columbia City, IN  
 JUDGE: G Raisor  
 DUTCH: 14  
 BOB: Blue SD D&T Kikkert  
 BOS: Blk SB D&T Kikkert  
 BLACK: 4 SB D&T Kikkert  
 BLUE: 4 SD D&T Kikkert  
 BR/GRAY: 2 SB Marti  
 STEEL: 3 SD Dangler  
 TORT: 1 SD Dangler

DATE: 4-13-96  
 SHOW: Midwest Trailblazers RC  
 WHERE: Sedalia, MO  
 JUDGE: G Johnston  
 DUTCH: 4  
 BOB: Choc JD Everton  
 BOS: Blue JB Clark  
 BLACK: 1 JB Clark  
 BLUE: 2 JB Clark  
 CHOC: 1 JD Everton

DATE: 4-13-96  
 SHOW: Florida State RBA  
 WHERE: Deland, FL  
 JUDGE: D Somers  
 DUTCH: 13  
 BOB: Blk JD NM  
 BOS: Choc SB Savitz  
 BLACK: 4 JD NM  
 BLUE: 1 JD NM  
 CHOC: 4 SB Savitz  
 TORT: 4 JD NM

DATE: 4-13-96  
 SHOW: Hub City RBA  
 WHERE: Nanaimo, BC, Canada  
 JUDGE: F Roberts  
 DUTCH: 10  
 BOB: Blk SD NM  
 BOS: Blue SB NM  
 BLACK: 6 SD NM  
 BLUE: 2 SB NM  
 CHOC: 2 SB Currie

DATE: 4-13-96  
 SHOW: Cal State R&CBA  
 WHERE: Tulare, CA  
 JUDGE: J Shults  
 DUTCH: 71  
 BOB: Br/Gray JD Eubank  
 BOS: Blk JB Dobson  
 BLACK: 26 JB Dobson  
 BLUE: 15 JD Eubank  
 CHOC: 7 SD J&F Schettler  
 BR/GRAY: 10 JD Eubank  
 TORT: 13 SB J&F Schettler

DATE: 4-13-96  
 SHOW: Florida State RBA  
 WHERE: Deland, FL  
 JUDGE: B Whaley  
 DUTCH: 28  
 BOB: Blue JD NM  
 BOS: Blk JB NM  
 BLACK: 8 JB NM  
 BLUE: 4 JD NM  
 CHOC: 3 JB Savitz  
 BR/GRAY: 2 SD Engle  
 TORT: 11 JD B&B Bond

DATE: 4-13-96  
 SHOW: Hop-2-It RBA  
 WHERE: St. Johns, MI  
 JUDGE: K Ehnis  
 DUTCH: 39  
 BOB: Blk JD McKinley  
 BOS: Blk JB McKinley  
 BLACK: 11 JD McKinley  
 BLUE: 8 SD Weltevreden  
 CHOC: 3 SD McKinley  
 TORT: 12 JD McKinley  
 STEEL: 2 SB Bowers  
 BR/GRAY: 3 JD Bowers

DATE: 4-13-96  
 SHOW: S. Plains RBA  
 WHERE: Lubbock, TX  
 JUDGE: D Shrader  
 DUTCH: 37  
 BOB: Blk JB NM  
 BOS: Tort JD C&E Rhodes  
 BLACK: 11 JB NM  
 BLUE: 4 SB NM  
 CHOC: 7 SD NM  
 BR/GRAY: 3 SB NM  
 STEEL: 2 JD C&E Rhodes  
 TORT: 10 SB NM

DATE: 4/13-4/14/96  
 SHOW: Oregon League of R&CB  
 WHERE: Eugene, OR  
 JUDGE: M Kroening  
 DUTCH: 13  
 BOB: Blk SD NM  
 BOS: Blk SB Richardson  
 BLACK: 8 SD NM  
 BLUE: 2 JD Richardson  
 CHOC: 2 JB NM  
 TORT: 1 SD NM

DATE: 4/13-4/14/96  
 SHOW: Oregon League of R&CB  
 WHERE: Eugene, OR  
 JUDGE: S Johnson  
 DUTCH: 12  
 BOB: Blk SB Richardson  
 BOS: Blk SD NM  
 BLACK: 7 SB Richardson  
 BLUE: 2 SB NM  
 CHOC: 2 JB NM  
 TORT: 1 SD NM

DATE: 4-13-96  
 SHOW: Yakima Valley RBA  
 WHERE: C. Wash. St Fair Grnds  
 JUDGE: D Wilcox  
 DUTCH: 51  
 BOB: Blue JD Johnston  
 BOS: Blk JB Thomas

BLACK: 22 JB Thomas  
 BLUE: 10 JD Johnston  
 BR/GRAY: 2 JD NM  
 CHOC: 5 SB Dills  
 STEEL: 3 JB R&J Coffelt  
 TORT: 9 JB Thomas

DATE: 4-13-96  
 SHOW: Tri-Co RB  
 WHERE: Jefferson, WI  
 JUDGE: R Goedderz  
 DUTCH: 23  
 BOB: Br/Gray SB Guetschow  
 BOS: Blue SD Guetschow  
 BLACK: 12 SB NM  
 BLUE: 6 SD Guetschow  
 CHOC: 2 JB Strandwitz  
 BR/GRAY: 3 SB Guetschow

DATE: 4-14-96  
 SHOW: Mississippi Valley RBA  
 WHERE: DeWitt, IA  
 JUDGE: B Rice  
 DUTCH: 40  
 BOB: Br/Gray SD McAtee  
 BOS: Blk JB Dowd  
 BLACK: 5 JB Dowd  
 BLUE: 13 SB Dowd  
 BR/GRAY: 9 SD McAtee  
 CHOC: 5 JB Dowd  
 STEEL: 4 SB McAtee  
 TORT: 4 SB Dowd

DATE: 4-14-96  
 SHOW: Mississippi Valley RBA  
 WHERE: DeWitt, IA  
 JUDGE: G Grimm  
 DUTCH: 49  
 BOB: Blue SD Dowd  
 BOS: Blue SB Weiersheuser  
 BLACK: 9 SD NM  
 BLUE: 13 SD Dowd  
 BR/GRAY: 10 SB McAtee  
 CHOC: 8 SB NM  
 STEEL: 4 SB McAtee  
 TORT: 5 SB Dowd

DATE: 4-14-96  
 SHOW: Cal State R&CBA  
 WHERE: Tulare, CA  
 JUDGE: D Matthews  
 DUTCH: 72  
 BOB: Blk JB Dobson  
 BOS: Tort JD Dobson  
 BLACK: 28 JB Dobson  
 BLUE: 14 SB Dobson  
 CHOC: 7 SB J&F Schettler  
 BR/GRAY: 10 SD Baird  
 TORT: 13 JD Dobson

DATE: 4-14-96  
 SHOW: Midwest Trailblazers RC  
 WHERE: Sedalia, MO  
 JUDGE: B Dodge  
 DUTCH: 4  
 BOB: Choc JD Everton  
 BOS: Blue JB Clark  
 BLACK: 1 JB Clark  
 BLUE: 2 JD Clark  
 CHOC: 1 JD Everton

DATE: 4-14-96  
 SHOW: Akron RC  
 WHERE: Tallmadge, OH  
 JUDGE: M D'Amico  
 DUTCH: 28  
 BOB: Br/Gray JB Townsend  
 BOS: Blk JD Imes  
 BLACK: 4 JD Imes  
 BLUE: 8 SB Jack's Bunnies  
 CHOC: 5 JD NM  
 TORT: 5 JB Smith  
 BR/GRAY: 6 JB Townsend

DATE: 4-14-96  
 SHOW: Liano Estacado RBA  
 WHERE: Lubbock, TX  
 JUDGE: K McNinch  
 DUTCH: 38  
 BOB: Blk SD NM  
 BOS: Blk SB NM  
 BLACK: 11 SD NM  
 BLUE: 4 SB NM  
 CHOC: 9 SB NM  
 BR/GRAY: 3 SD NM  
 STEEL: 2 JD C&E Rhodes  
 TORT: 9 SB NM

DATE: 4-14-96  
 SHOW: Hub City RBA  
 WHERE: Nanaimo, BC, Canada  
 JUDGE: D Brak  
 DUTCH: 9  
 BOB: Blk SD NM  
 BOS: Blk JB Currie  
 BLACK: 6 SD NM  
 BLUE: 1 SB NM  
 CHOC: 2 SB Currie

DATE: 4-14-96  
 SHOW: Springfield RBC  
 WHERE: Springfield, IL  
 JUDGE: R Waggoner  
 DUTCH: 38  
 BOB: Blue SD D&T Kikkert  
 BOS: Tort JB Graflund  
 BLACK: 16 SD D&T Kikkert  
 BLUE: 7 SD D&T Kikkert  
 CHOC: 7 JD S&J Satulla  
 TORT: 7 JB Graflund  
 BR/GRAY: 1 JD NM

DATE: 4-14-96  
 SHOW: Jacksonville Area RB  
 WHERE: Springfield, IL  
 JUDGE: K Cunningham  
 DUTCH: 34  
 BOB: Blue SD D&T Kikkert  
 BOS: Blk SB D&T Kikkert  
 BLACK: 15 SB D&T Kikkert  
 BLUE: 7 SD D&T Kikkert  
 CHOC: 4 SB NM  
 TORT: 7 JB Graflund  
 BR/GRAY: 1 JD NM

DATE: 4-14-96  
 SHOW: Tri-Co RB  
 WHERE: Jefferson, WI  
 JUDGE: M Avesing  
 DUTCH: 18  
 BOB: Br/Gray SB Guetschow  
 BOS: Blk JD Strandwitz  
 \*\*\* Cont'd next page \*\*\*

OPEN SHOW REPORTS

BLACK: 10 SB Guetschow  
 BLUE: 2 SD Guetschow  
 CHOC: 3 SB W&F Kuntz  
 BR/GRAY: 2 SB Guetschow  
 STEEL: 1 SB Guetschow

DATE: 4-20-96  
 SHOW: Silver Sage R&CBA  
 WHERE: Carson City, NV  
 JUDGE: J Coleman  
 DUTCH: 33  
 BOB: Choc JB Bennett  
 BOS: Br/Gray SD Burke  
 BLACK: 7 JB NM  
 BLUE: 5 JD Burke  
 CHOC: 8 JB Bennett  
 TORT: 1 SB Bennett  
 STEEL: 4 SB Burke  
 BR/GRAY: 8 SD Burke

DATE: 4-20-96  
 SHOW: Hop To It RC  
 WHERE: Hutchinson, MN  
 JUDGE: R Goedderz  
 DUTCH: 70  
 BOB: Br/Gray JB Cheney  
 BOS: Tort JD J/Bach  
 BLACK: 12 JD S/Bach  
 BLUE: 14 SD Wetzel  
 CHOC: 18 JD Ihrke  
 BR/GRAY: 8 JB Cheney  
 STEEL: 3 JD J/Bach  
 TORT: 15 JD J/Bach

DATE: 4-20-96  
 SHOW: Georgia RC  
 WHERE: Temple, GA  
 JUDGE: TL Andrews  
 DUTCH: 3  
 BOB: Blk SB Schultheis  
 BOS: Br/Gray SD NM  
 BLACK: 1 SB Schultheis  
 BR/GRAY: 1 SD NM  
 STEEL: 1 SB Schott

DATE: 4-20-96  
 SHOW: Whitewater Valley RBA  
 WHERE: Connersville, IN  
 JUDGE: T Fender  
 DUTCH: 25  
 BOB: Tort SB Hewson  
 BOS: Blue SD D&T Kikkert  
 BLACK: 7 JD D&T Kikkert  
 BLUE: 4 SD D&T Kikkert  
 BR/GRAY: 4 SD Hewson  
 CHOC: 5 SB Hewson  
 STEEL: 1 SD Hewson  
 TORT: 4 SB Hewson

DATE: 4-20-96  
 SHOW: Georgia RC  
 WHERE: Temple, GA  
 JUDGE: C Richenback  
 DUTCH: 7  
 BOB: Tort JD NM  
 BOS: Steel SB Schott  
 BLACK: 3 SD NM  
 BR/GRAY: 2 JD Schott  
 STEEL: 1 SB Schott  
 TORT: 1 JD NM

DATE: 4-20-96  
 SHOW: Lilac City Youth RC  
 WHERE: Spokane, WA  
 JUDGE: F Roberts  
 DUTCH: 46  
 BOB: Blue JD Brak  
 BOS: Blk SB NM  
 BLACK: 17 SB NM  
 BLUE: 10 JD Brak  
 CHOC: 7 JD NM  
 BR/GRAY: 3 SB NM  
 STEEL: 1 JB NM  
 TORT: 8 SB NM

DATE: 4-20-96  
 SHOW: Silver Sage R&CBA  
 WHERE: Carson City, NV  
 JUDGE: R Hassenpflug  
 DUTCH: 26  
 BOB: Br/Gray SB Burke  
 BOS: Br/Gray SD Burke  
 BLACK: 5 JB NM  
 BLUE: 5 SD NM  
 CHOC: 5 JB Burke  
 STEEL: 4 JD Bennett  
 BR/GRAY: 7 SB Burke

DATE: 4-20-96  
 SHOW: Lancaster Co R&CBA  
 WHERE: Lampeter, PA  
 JUDGE: J Hardin  
 DUTCH: 11  
 BOB: Tort SD Fresconi  
 BOS: Blk SB Roth  
 BLACK: 6 SD NM  
 BLUE: 1 SD NM  
 TORT: 4 SD Fresconi

DATE: 4-20-96  
 SHOW: S. Cent. Michigan RBA  
 WHERE: Mason, MI  
 JUDGE: B Shaftoe  
 DUTCH: 51  
 BOB: Tort SD McKinley  
 BOS: Br/Gray JB Bowers  
 BLACK: 15 SD Micallef  
 BLUE: 7 JD T&D Reckker  
 BR/GRAY: 4 SD Bowers  
 CHOC: 7 JD Micallef  
 STEEL: 5 SB Bowers  
 TORT: 13 SD McKinley

DATE: 4-20-96  
 SHOW: Country RBA  
 WHERE: Belen, NM  
 JUDGE: J Livingston  
 DUTCH: 43  
 BOB: Blk JD Carlton  
 BOS: Blk SB Carlton  
 BLACK: 15 JD Carlton  
 CHOC: 8 SB Carlton  
 BR/GRAY: 6 SD NM  
 STEEL: 1 SB Carlton  
 TORT: 13 SB Carlton

DATE: 4-20-96  
 SHOW: Jackson Purchase RBC  
 WHERE: Hopkinsville, KY  
 JUDGE: R Waggoner  
 DUTCH: 24  
 BOB: Blue JD Davison  
 BOS: Tort JB M/Drake

BLACK: 5 JD M/Drake  
 BLUE: 6 JD Davison  
 CHOC: 1 SD NM  
 TORT: 12 SD D&J Fleming

DATE: 4-20-96  
 SHOW: Mid Valley R&CBA  
 WHERE: Rhinebeck, NY  
 JUDGE: F Del Mastro  
 DUTCH: 22  
 BOB: Br/Gray SD Dahl  
 BOS: Steel JB Dahl  
 BLACK: 7 SD Dahl  
 BLUE: 2 SB Dahl  
 CHOC: 3 SD Dahl  
 BR/GRAY: 4 SD Dahl  
 STEEL: 3 JB Dahl  
 TORT: 3 JD Dahl

DATE: 4-20-96  
 SHOW: Western Iowa RBA  
 WHERE: Sioux City, IA  
 JUDGE: B Rice  
 DUTCH: 49  
 BOB: Choc SB NM  
 BOS: Choc JD NM  
 BLACK: 19 SB Rydell  
 BLUE: 10 JB Steizer  
 CHOC: 17 SB NM  
 TORT: 1 SB Rydell  
 STEEL: 1 SB Rydell  
 BR/GRAY: 1 JB NM

DATE: 4-21-96  
 SHOW: Decatur Area RBA  
 WHERE: Decatur, IL  
 JUDGE: W Grebner  
 DUTCH: 13  
 BOB: Blk JD K&C Runkles  
 BOS: Blue JB NM  
 BLACK: 6 JD K&C Runkles  
 BLUE: 4 JB NM  
 CHOC: 2 JB NM  
 BR/GRAY: 1 JD NM

DATE: 4-21-96  
 SHOW: NE Ohio RF  
 WHERE: Jefferson, OH  
 JUDGE: H Keller  
 DUTCH: 10  
 BOB: Blk JD Imes  
 BOS: Blk SB Imes  
 BLACK: 3 JD Imes  
 TORT: 1 JD Imes  
 BR/GRAY: 6 JD NM

DATE: 4-21-96  
 SHOW: Portsmouth RBA  
 WHERE: Lucasville, OH  
 JUDGE: H Rice  
 DUTCH: 22  
 BOB: Blk SD Barton  
 BOS: Blk SB Shaw  
 BLACK: 6 SD Barton  
 BLUE: 8 SB Shaw  
 CHOC: 7 SB NM  
 BR/GRAY: 1 SB Barton

DATE: 4-21-96  
 SHOW: Teays Valley RBA  
 WHERE: Lucasville, OH  
 JUDGE: K Bogan

DUTCH: 22  
 BOB: Blk SD A&S Barton  
 BOS: Blue SB Shaw  
 BLACK: 6 SD A&S Barton  
 BLUE: 8 SB Shaw  
 CHOC: 7 JD NM  
 BR/GRAY: 1 SB A&S Barton

DATE: 4-21-96  
 SHOW: Freestate Domestic RC  
 WHERE: Gaithersburg, MD  
 JUDGE: R Brewer  
 DUTCH: 26  
 BOB: Blk JB G&M Hamersley  
 BOS: Tort SD Fresconi  
 BLACK: 11 JB G&M Hamersley  
 BLUE: 8 SB Wood  
 CHOC: 3 SB Wood  
 TORT: 4 SD Fresconi

DATE: 4-21-96  
 SHOW: Whitewater Valley RBA  
 WHERE: Connersville, IN  
 JUDGE: R Riddle  
 DUTCH: 5  
 BOB: Blue SD D&T Kikkert  
 BOS: Blk SB D&T Kikkert  
 BLACK: 3 SD D&T Kikkert  
 BLUE: 1 SD D&T Kikkert  
 CHOC: 1 JB D&T Kikkert

DATE: 4-21-96  
 SHOW: Fairfield Co RBA  
 WHERE: N. Haven, CT  
 JUDGE: L Benoit  
 DUTCH: 37  
 BOB: Blk SD Dahl  
 BOS: Blk SB NM  
 BLACK: 10 SD Dahl  
 BLUE: 10 SD J/Green  
 CHOC: 6 JB NM  
 TORT: 5 SB Sartori  
 STEEL: 2 SD Dahl  
 BR/GRAY: 4 SD Dahl

DATE: 4-21-96  
 SHOW: Southwest RBA  
 WHERE: Ft. Worth, TX  
 JUDGE: R Lawrence  
 DUTCH: 22  
 BOB: Blk JB Holman  
 BOS: Steel JD McClung  
 BLACK: 8 JB Holman  
 BLUE: 5 JB McClung  
 TORT: 2 JB McClung  
 STEEL: 2 JD McClung  
 BR/GRAY: 5 JB McClung

DATE: 4/26-4/28/96  
 SHOW: Ohio State Dutch-NDS  
 WHERE: Greenville, OH  
 JUDGES: G Carr  
 M D'Amico  
 C Haynow  
 DUTCH: 644  
 BOB: Blue SB Worden  
 BOS: Blk JD McKinley  
 BLACK: 180 JB Shaw  
 BLUE: 128 SB Worden  
 CHOC: 108 SDThompson  
 BR/GRAY: 66 SD Hooper  
 \*\*\* Cont'd next page \*\*\*

**OPEN SHOW REPORTS**

STEEL: 55 SD Bounds  
TORT: 107 SD McKinley

DATE: 4-27-96  
SHOW: South Texas RBA  
WHERE: Yoakum, TX  
JUDGE: G Gillespie  
DUTCH: 8  
ALL WINNERS NM

DATE: 4-27-96  
SHOW: Fair City RC  
WHERE: Wessington Springs, SD  
JUDGE: D Kroenke  
DUTCH: 16  
BOB: Blk JD M/Grann  
BOS: Tort JB M/Grann  
BLACK: 4 JD M/Grann  
BLUE: 4 JD J/Grann  
CHOC: 2 SB M/Grann  
TORT: 4 JB M/Grann  
BR/GRAY: 2 JD J/Grann

DATE: 4-27-96  
SHOW: Rochester Area RC  
WHERE: Kasson, MN  
JUDGE: R Steinberg  
DUTCH: 18  
BOB: Blk JD Van Hyfte  
BOS: Tort SB Larson  
BLACK: 5 JD Van Hyfte  
BLUE: 5 SD Van Hyfte  
CHOC: 1 SD Bach  
BR/GRAY: 2 SB Larson  
TORT: 5 SB Larson

DATE: 4-27-96  
SHOW: Riverton RB  
WHERE: Riverton, WY  
JUDGE: C Wickizer  
DUTCH: 39  
BOB: Br/Gray JD Gabel  
BOS: Choc SB S/Sigurdson  
BLACK: 10 JB Sunderman  
BLUE: 8 JD NM  
CHOC: 7 SB S/Sigurdson  
TORT: 6 SB Metcalf  
STEEL: 3 JD NM  
BR/GRAY: 5 JD Gabel

DATE: 4-27-96  
SHOW: Riverton RB  
WHERE: Riverton, WY  
JUDGE: J Coffelt  
DUTCH: 40  
BOB: Br/Gray JD NM  
BOS: Blk SB Sunderman  
BLACK: 10 SB Sunderman  
BLUE: 9 SB Metcalf  
CHOC: 7 JD NM  
TORT: 6 SB Metcalf  
STEEL: 3 JD NM  
BR/GRAY: 5 JD NM

DATE: 4-27-96  
SHOW: Riverton RB  
WHERE: Riverton, WY  
JUDGE: P Fix  
DUTCH: 33  
BOB: Br/Gray JD Gabel  
BOS: Blue SB Metcalf  
BLACK: 8 JD Sunderman

BLUE: 7 SB Metcalf  
CHOC: 7 JD S/Sigurdson  
TORT: 6 JD Metcalf  
STEEL: 2 SB Vigil  
BR/GRAY: 3 JD Gabel

DATE: 4-27-96  
SHOW: Idaho State R&CBA  
WHERE: Rupert, ID  
JUDGE: R Shaftoe  
DUTCH: 15  
BOB: Blk SB NM  
BOS: Blk JD NM  
BLACK: 4 SB NM  
BLUE: 6 JD NM  
CHOC: 1 SD NM  
BR/GRAY: 3 SB NM  
TORT: 1 SB L/Loucks

DATE: 4-28-96  
SHOW: Golden West RBA  
WHERE: Pomona, CA  
JUDGE: D Swanson  
DUTCH: 18  
BOB: Blk SD Diaz  
BOS: Blk SB Diaz  
BLACK: 8 SD Diaz  
BLUE: 5 JD NM  
CHOC: 3 JD Duncan  
TORT: 2 SB NM

DATE: 4-28-96  
SHOW: Central Wisconsin RBA  
WHERE: Marshfield, WI  
JUDGE: C Stelloh  
DUTCH: 8  
BOB: Blk JD D&K Gates  
BOS: Blk SB NM  
BLACK: 6 JD D&K Gates  
CHOC: 2 SD D&K Gates

DATE: 4-28-96  
SHOW: Mills County RBA  
WHERE: Thurman, IA  
JUDGE: D Kroenke  
DUTCH: 17  
BOB: Choc JD Evertson  
BOS: Blk JB NM  
BLACK: 6 JB NM  
BLUE: 3 JB NM  
CHOC: 7 JD Evertson  
TORT: 1 JB NM

DATE: 5-4-96  
SHOW: Pearl River County RBA  
WHERE: Picayune, MS  
JUDGE: D Somers  
DUTCH: 8  
BOB: Blk JB Molinere  
BOS: Choc SD NM  
BLACK: 5 JB Molinere  
BLUE: 1 JD NM  
CHOC: 1 SD NM  
TORT: 1 JB Molinere

DATE: 5-4-96  
SHOW: Northwest RB  
WHERE: Monroe, WA  
JUDGE: T Keyes  
DUTCH: 83  
BOB: Blue SD M&D Brak  
BOS: Blue JB Moreau

BLACK: 18 JB M&D Brak  
BLUE: 16 SD M&D Brak  
CHOC: 26 JB Nelson  
BR/GRAY: 4 JB Nelson  
STEEL: 3 JD NM  
TORT: 16 JB Nelson

DATE: 5-4-96  
SHOW: Three Corners RC  
WHERE: Hutchinson, KS  
JUDGE: J Jewett  
DUTCH: 32  
BOB: Blue JB J&C Colborn  
BOS: Blk SD E&T Bogart  
BLACK: 17 SD E&T Bogart  
BLUE: 6 JB J&C Colborn  
CHOC: 4 JD NM  
STEEL: 1 SB NM  
TORT: 4 JD M&M Cole

DATE: 5-4-96  
SHOW: Northwest RB  
WHERE: Monroe, WA  
JUDGE: D Wilcox  
DUTCH: 63  
BOB: Choc JB Nelson  
BOS: Blue SD M&D Brak  
BLACK: 14 JB M&D Brak  
BLUE: 13 SD M&D Brak  
CHOC: 15 JB Nelson  
BR/GRAY: 3 JB Nelson  
STEEL: 3 JB Nelson  
TORT: 15 JB Nelson

DATE: 5-4-96  
SHOW: Garden City RBA  
WHERE: Missoula, MT  
JUDGE: J Kelly  
DUTCH: 34  
BOB: Blk SD Gregg  
BOS: Blk SB Gregg  
BLACK: 12 SD Gregg  
BLUE: 12 SD NM  
CHOC: 2 SD NM  
BR/GRAY: 1 SD NM  
STEEL: 1 SB NM  
TORT: 6 SB Gregg

DATE: 5-4-96  
SHOW: Garden City RBA  
WHERE: Missoula, MT  
JUDGE: C Gomez  
DUTCH: 22  
BOB: Br/Gray SD NM  
BOS: Steel JB NM  
BLACK: 8 SD Gregg  
BLUE: 6 SB NM  
CHOC: 1 SB NM  
BR/GRAY: 1 SD NM  
STEEL: 1 JB NM  
TORT: 5 SB Gregg

DATE: 5-4-96  
SHOW: Fruit Ridge RF  
WHERE: Hudsonville, IL  
JUDGE: W Bouwkamp  
DUTCH: 16  
BOB: Tort SD Cushman  
BOS: Blk SB Cushman  
BLACK: 7 SD Cushman  
BLUE: 7 SB Cushman  
TORT: 2 SD Cushman

DATE: 5-4-96  
SHOW: Cal-State R&CBA  
WHERE: Pomona, CA  
JUDGE: J Shults  
DUTCH: 25  
BOB: Blk SB Diaz  
BOS: Br/Gray SD Eubank  
BLACK: 18 SB Diaz  
BLUE: 4 JB Eubank  
BR/GRAY: 2 SD Eubank  
STEEL: 1 SD Giron

DATE: 5-4-96  
SHOW: Blennerhassett RB  
WHERE: Ohio  
JUDGE: D Boroff  
DUTCH: 23  
BOB: Choc JB A/Henry  
BOS: Blue JD NM  
BLACK: 5 SD P/Peters  
BLUE: 5 JD NM  
CHOC: 12 JB A/Henry  
BR/GRAY: 1 SD NM

DATE: 5-4-96  
SHOW: Owatonna Area RC  
WHERE: Owatonna, MN  
JUDGE: A Butler  
DUTCH: 59  
BOB: Choc SB Hoagland-Wetzel  
BOS: Blue SD Luedtke  
BLACK: 12 SD Hoagland-Wetzel  
BLUE: 8 SD Luedtke  
BR/GRAY: 5 JB Cheney  
CHOC: 22 SB Hoagland-Wetzel  
STEEL: 2 JD Bach  
TORT: 10 JB Cheney

DATE: 5-4-96  
SHOW: Phelps Co RBA  
WHERE: Rolla, MO  
JUDGE: R Riddle  
DUTCH: 12  
BOB: Blue JD Strassner  
BOS: Choc JB S&J Satulla  
BLACK: 3 JD R&P Caldwell  
BLUE: 4 JD Strassner  
CHOC: 3 JD S&J Satulla  
TORT: 1 SD Smith  
STEEL: 1 SB R&P Caldwell

DATE: 5-4-96  
SHOW: Union RBA  
WHERE: Monroe, NC  
JUDGE: H Keller  
DUTCH: 12  
BOB: Blk SB NM  
BOS: Blk SD NM  
BLACK: 5 SB NM  
CHOC: 2 JD NM  
BR/GRAY: 2 SD R&M Brewer  
STEEL: 1 SB R&M Brewer  
TORT: 2 SD R&M Brewer

DATE: 5/4-5/5/96  
SHOW: El Paso RA  
WHERE: Las Cruces, NM  
JUDGE: M Crawford  
DUTCH: 20  
BOB: Blk SD Carlton  
BOS: Choc JB Carlton  
\*\*\* Cont'd next page \*\*\*



**OPEN SHOW REPORTS**

BLACK: 5 SD Carlton  
 CHOC: 8 JB Carlton  
 BR/GRAY: 3 Carlton  
 TORT: 4 SB Carlton

DATE: 5/4-5/5/96  
 SHOW: El Paso RA  
 WHERE: Las Cruces, NM  
 JUDGE: C Hooks  
 DUTCH: 20  
 BOB: Blk SB Carlton  
 BOS: Blk SD Carlton  
 BLACK: 5 SB Carlton  
 CHOC: 8 JB Carlton  
 BR/GRAY: 3 JD Carlton  
 TORT: 4 SB Carlton

DATE: 5/4-5/5/96  
 SHOW: El Paso RA  
 WHERE: Las Cruces, NM  
 JUDGE: S Pulliam  
 DUTCH: 20  
 BOB: Blk SD Carlton  
 BOS: Blk SB Carlton  
 BLACK: 5 SD Carlton  
 CHOC: 8 SB Carlton  
 BR/GRAY: 3 JD Carlton  
 TORT: 4 SB Carlton

DATE: 5/4-5/5/96  
 SHOW: Platte River RF  
 WHERE: Henderson, CO  
 JUDGE: B Shaftoe  
 DUTCH: 20  
 BOB: Steel JD NM  
 BOS: Choc SB NM  
 BLACK: 7 SB NM  
 BLUE: 8 SB Metcalf  
 CHOC: 1 SB NM  
 BR/GRAY: 1 SD NM  
 STEEL: 3 JD NM

DATE: 5-5-96  
 SHOW: Effingham R&CBA  
 WHERE: Altamont, IL  
 JUDGE: O Reynolds  
 DUTCH: 10  
 BOB: Blk JB NM  
 BOS: Blk SD NM  
 BLACK: 4 JB NM  
 BLUE: 3 SB NM  
 TORT: 1 JB J&C Rawailot  
 GRAY: 2 SB J&C Rawailot

DATE: 5-5-96  
 SHOW: Southwestern Ohio RBA  
 WHERE: Xenia, OH  
 JUDGE: R Allebach  
 DUTCH: 60  
 BOB: Tort SB Hooper  
 BOS: Blue JD A&S Barton  
 BLACK: 14 SB J&T Wise  
 BLUE: 15 SB NM  
 CHOC: 6 JB Hooper  
 BR/GRAY: 7 JD Hooper  
 STEEL: 8 SB J&T Wise  
 TORT: 10 SB Hooper

DATE: 5-5-96  
 SHOW: RF of N. Central Ohio  
 WHERE: Canton, OH  
 JUDGE: L Collins

DUTCH: 28  
 BOB: Blk JD J/Imes  
 BOS: Blk SB NM  
 BLACK: 11 JD J/Imes  
 BLUE: 3 SB Wireman  
 CHOC: 2 SD NM  
 TORT: 5 JB J/Imes  
 STEEL: 1 SD M/Townsend  
 BR/GRAY: 6 SD J/Imes

DATE: 5-5-96  
 SHOW: East River RB  
 WHERE: Lennox, SD  
 JUDGE: G Johnston  
 DUTCH: 72  
 BOB: Blue JD Stelzer  
 BOS: Blue JB J/Grann  
 BLACK: 28 JB Stelzer  
 BLUE: 11 JD Stelzer  
 BR/GRAY: 6 JD McCune  
 CHOC: 13 JD McCune  
 STEEL: 8 SD McCune  
 TORT: 6 SD M/Grann

DATE: 5-5-96  
 SHOW: East River RB  
 WHERE: Lennox, SD  
 JUDGE: B Evertson  
 DUTCH: 49  
 BOB: Blk JB Stelzer  
 BOS: Blue JD Stelzer  
 BLACK: 18 JB Stelzer  
 BLUE: 9 JD Stelzer  
 BR/GRAY: 4 JD McCune  
 CHOC: 7 JD McCune  
 STEEL: 6 SD McCune  
 TORT: 5 JD J/Grann

DATE: 5-5-96  
 SHOW: Stark Co R&CBA  
 WHERE: Canton, OH  
 JUDGE: P Macy  
 DUTCH: 21  
 BOB: Blk JB Imes  
 BOS: Tort SD NM  
 BLACK: 9 JB Imes  
 BLUE: 1 SB Wireman  
 BR/GRAY: 6 SD Imes  
 TORT: 5 SD NM

DATE: 5-5-96  
 SHOW: N. Illinois RR  
 WHERE: Woodstock, IL  
 JUDGE: R Riddle  
 DUTCH: 17  
 BOB: Br/Gray SD McAtee  
 BOS: Steel SB McAtee  
 BLACK: 5 SD Anderson  
 STEEL: 3 SB McAtee  
 BR/GRAY: 9 SD McAtee

DATE: 5-5-96  
 SHOW: Essex Co R&CA  
 WHERE: Topsfield, MA  
 JUDGE: D LaRochelle  
 DUTCH: 38  
 BOB: Choc SB S/Green  
 BOS: Blk SD Dahl  
 BLACK: 11 SB NM  
 BLUE: 10 SB Dahl  
 CHOC: 6 SB S/Green  
 BR/GRAY: 4 JD Dahl

STEEL: 2 SB Dahl  
 TORT: 5 JD Dahl

DATE: 5-5-96  
 SHOW: Red Cedar RB  
 WHERE: Rice Lake, WI  
 JUDGE: B Rice  
 DUTCH: 40  
 BOB: Blk JB Hoagland-Wetzel  
 BOS: Choc JD Ihrke  
 BLACK: 9 JB Hoagland-Wetzel  
 BLUE: 4 SB Ihrke  
 CHOC: 23 SB Ihrke  
 TORT: 2 SB A/Wetzel  
 STEEL: 2 JD Ihrke

DATE: 5-5-96  
 SHOW: Salt City RBA  
 WHERE: Hutchinson, KS  
 JUDGE: C Addison  
 DUTCH: 30  
 BOB: Blk SB E&T Bogart  
 BOS: Blk JD E&T Bogart  
 BLACK: 18 SB E&T Bogart  
 BLUE: 6 JD E&T Bogart  
 CHOC: 5 JB NM  
 STEEL: 1 SB NM

DATE: 5-11-96  
 SHOW: Trinity Co RB  
 WHERE: Lewiston, CA  
 JUDGE: C Gomez  
 DUTCH: 11  
 BOB: Blue JD Garcia  
 BOS: Blue SB Garcia  
 BLACK: 4 JB Garcia  
 BLUE: 6 JD Garcia  
 CHOC: 1 SB NM

DATE: 5-11-96  
 SHOW: San Juan RB  
 WHERE: Farmington, NM  
 JUDGE: F Cremer  
 DUTCH: 38  
 BOB: Choc SB Carlton  
 BOS: Blk JD Carlton  
 BLACK: 10 SB Carlton  
 CHOC: 14 SB Carlton  
 BR/GRAY: 9 JB Carlton  
 TORT: 5 SB Carlton

DATE: 5-11-96  
 SHOW: Trinity Co RB  
 WHERE: Lewiston, CA  
 JUDGE: D Dopfer  
 DUTCH: 11  
 BOB: Blk JD Garcia  
 BOS: Blue JB Garcia  
 BLACK: 4 JD Garcia  
 BLUE: 6 JD Garcia  
 CHOC: 1 SB NM

DATE: 5-11-96  
 SHOW: Tulsa RBA  
 WHERE: Tulsa, OK  
 JUDGE: O Reynolds  
 DUTCH: 9  
 ALL WINNERS NM

DATE: 5-11-96  
 SHOW: West. Hills & Plains RB  
 WHERE: Hermosa, SD

JUDGE: B Price  
 DUTCH: 10  
 ALL WINNERS NM

DATE: 5-11-96  
 SHOW: Western Hills & Plains RB  
 WHERE: Hermosa, SD  
 JUDGE: S Parker  
 DUTCH: 10  
 ALL WINNERS NM

DATE: 5-11-96  
 SHOW: Springfield RB  
 WHERE: Rogersville, MO  
 JUDGE: B Rice  
 DUTCH: 46  
 BOB: Blk JB Gilmore  
 BOS: Blue SD Clark  
 BLACK: 13 JB Gilmore  
 BLUE: 13 SD Clark  
 CHOC: 4 JB L/Tackett  
 TORT: 6 JB B/Tackett  
 STEEL: 5 SB B/Tackett  
 BR/GRAY: 5 JB B/Tackett

DATE: 5-11-96  
 SHOW: Smoky Mountain RB  
 WHERE: Knoxville, TN  
 JUDGE: R Hall  
 DUTCH: 94  
 BOB: Steel SD R&J Billups  
 BOS: Blue JB F&K Mullinax  
 BLACK: 28 JD R&J Billups  
 BLUE: 20 JB F&K Mullinax  
 CHOC: 12 SB Wood  
 BR/GRAY: 11 SD NM  
 STEEL: 7 SD R&J Billups  
 TORT: 16 JD Drake

DATE: 5-11-96  
 SHOW: Rolling Hills  
 WHERE: Chrisney, IN  
 JUDGE: J Marshall  
 DUTCH: 15  
 BOB: Tort SD D&J Fleming  
 BOS: Tort JB D&J Fleming  
 BLACK: 5 JD NM  
 BLUE: 3 JB D&J Fleming  
 BR/GRAY: 1 JD DQ  
 STEEL: 2 SD NM  
 TORT: 4 SD D&J Fleming

DATE: 5-11-96  
 SHOW: Florida State RBA  
 WHERE: Deland, FL  
 JUDGE: D Oser  
 DUTCH: 51  
 BOB: Tort SB Grabenbauer  
 BOS: Blk SD Cummings  
 BLACK: 9 JB NM  
 BLUE: 15 SB May  
 BR/GRAY: 4 SB Engler  
 CHOC: 9 JB Savitz  
 TORT: 14 SB Grabenbauer

DATE: 5-11-96  
 SHOW: North Carolina Dutch  
 WHERE: Knoxville, TN  
 JUDGE: W Willis  
 DUTCH: 89  
 BOB: Blk SB F&K Mullinax  
 \*\*\* Cont'd next page \*\*\*

**OPEN SHOW REPORTS**

BOS: Steel SD R&J Billups  
 BLACK: 30 SB F&K Mullinax  
 BLUE: 18 JD F&K Mullinax  
 CHOC: 10 JB Wood  
 TORT: 16 JB Wood  
 STEEL: 7 SB R&M Brewer  
 BR/GRAY: 8 SB Wood

DATE: 5-11-96  
 SHOW: Western Michigan RBA  
 WHERE: Greenville, MI  
 JUDGE: K Ehnis  
 DUTCH: 13  
 ALL DISQUALIFIED

DATE: 5-11-96  
 SHOW: Florida State RBA  
 WHERE: Deland, FL  
 JUDGE: D Cardinal  
 DUTCH: 44  
 BOB: Blue SB May  
 BOS: Choc SD May  
 BLACK: 9 JB May  
 BLUE: 13 SB May  
 BR/GRAY: 3 JD Lemon  
 CHOC: 6 SD May  
 TORT: 13 JD NM

DATE: 5-12-96  
 SHOW: Waterloo Area RBA  
 WHERE: Waterloo, IA  
 JUDGE: M Avesing  
 DUTCH: 45  
 BOB: Blk JB Dowd  
 BOS: Br/Gray JD McAtee  
 BLACK: 7 JB Dowd  
 BLUE: 7 SB Dowd  
 CHOC: 8 JB Dowd  
 TORT: 11 SB E&S Mixdorf  
 STEEL: 2 SB McAtee  
 BR/GRAY: 10 JD McAtee

DATE: 5/17-5/19/96  
 SHOW: Ohio State RBA  
 WHERE: Columbus, OH  
 JUDGE: G Raisor  
 DUTCH: 72  
 BOB: Blk SB Uran  
 BOS: Steel JD Hooper  
 BLACK: 20 SB Uran  
 BLUE: 7 SB Hooper  
 BR/GRAY: 5 SD Hooper  
 CHOC: 15 SD J&T Wise  
 STEEL: 9 JD Hooper  
 TORT: 16 JB Hooper

DATE: 5-18-96  
 SHOW: Alaskan RBC  
 WHERE: Anchorage, AK  
 JUDGE: L Weeks  
 DUTCH: 19  
 BOB: Blue JD Hawley  
 BOS: Blue JB Hawley  
 BLACK: 8 JB Hawley  
 BLUE: 7 JD Hawley  
 BR/GRAY: 1 JD NM  
 CHOC: 3 JB M/Riddle

DATE: 5-18-96  
 SHOW: High Time RC  
 WHERE: Cheyenne, WY

JUDGE: R Krause  
 DUTCH: 21  
 BOB: Steel JD NM  
 BOS: Blue SB Metcalf  
 BLACK: 5 JD Sunderman  
 BLUE: 6 JD NM  
 CHOC: 2 SB NM  
 TORT: 1 SB NM  
 STEEL: 3 JD NM  
 BR/GRAY: 4 SD NM

DATE: 5-18-96  
 SHOW: Alaskan RBC  
 WHERE: Anchorage, AK  
 JUDGE: F Rudokph  
 DUTCH: 19  
 BOB: Br/Gray JD NM  
 BOS: Blk JB Hawley  
 BLACK: 8 JB Hawley  
 BLUE: 7 JD Hawley  
 BR/GRAY: 1 JD NM  
 CHOC: 3 JB M/Riddle

DATE: 5-18-96  
 SHOW: Central CT R&CBA  
 WHERE: North Haven, CT  
 JUDGE: R Cota  
 DUTCH: 37  
 BOB: Blk SD Dahl  
 BOS: Choc SB Green  
 BLACK: 10 SD Dahl  
 BLUE: 7 SB Green  
 CHOC: 7 SB Green  
 TORT: 5 SB Sartori  
 STEEL: 3 SB Dahl  
 BR/GRAY: 5 JD Dahl

DATE: 5-18-96  
 SHOW: Saquaro State R&CBA  
 WHERE: Prescott, AZ  
 JUDGE: M Lovejoy  
 DUTCH: 30  
 BOB: Blk JD Carlton  
 BOS: Choc JB Carlton  
 BLACK: 10 JD Carlton  
 CHOC: 10 JB Carlton  
 BR/GRAY: 5 JD Carlton  
 TORT: 5 SB Carlton

DATE: 5-18-96  
 SHOW: Mile-Hi RF  
 WHERE: Prescott, AZ  
 JUDGE: D King  
 DUTCH: 30  
 BOB: Choc JB Carlton  
 BOS: Blk JD Carlton  
 BLACK: 10 JD Carlton  
 CHOC: 10 JB Carlton  
 BR/GRAY: 5 JD Carlton  
 TORT: 5 SB Carlton

DATE: 5-18-96  
 SHOW: Rabbit Fest  
 WHERE: Copperas Cove, TX  
 JUDGE: G Carr  
 DUTCH: 35  
 BOB: Tort JB McClung  
 BOS: Blk JD McClung  
 BLACK: 12 SB McClung  
 BLUE: 8 JD McClung  
 BR/GRAY: 5 JD McClung

CHOC: 1 SB McClung  
 STEEL: 3 JD McClung  
 TORT: 6 JB McClung

DATE: 5-18-96  
 SHOW: Hippy Hops Youth RC  
 WHERE: Jackson, WY  
 JUDGE: C Dick  
 DUTCH: 15  
 BOB: Br/Gray JD Gabel  
 BOS: N/A  
 BLACK: 7 JD NM  
 BLUE: 3 JD Gabel  
 TORT: 3 JB Gabel  
 STEEL: 1 SB Gabel  
 BR/GRAY: 1 JD Gabel

DATE: 5-18-96  
 SHOW: Crazy-8 RCBA  
 WHERE: Canby, OR  
 JUDGE: C Zemny  
 DUTCH: 25  
 BOB: Blk SB M&D Brak  
 BOS: Blk SD M&D Brak  
 BLACK: 9 SB M&D Brak  
 BLUE: 5 SB NM  
 TORT: 11 SB Widrig

DATE: 5-18-96  
 SHOW: Suburban Twins RC  
 WHERE: Farmington, MN  
 JUDGE: R Steinberg  
 DUTCH: 30  
 BOB: Choc SB Hoagland-Wetzel  
 BOS: Blue SD Luedtke  
 BLACK: 7 SB Luedtke  
 BLUE: 3 SB Hoagland-Wetzel  
 BR/GRAY: 1 SB Larson  
 CHOC: 15 SB Hoagland-Wetzel  
 TORT: 4 JB Luedtke

DATE: 5-18-96  
 SHOW: Suburban Twins RC  
 WHERE: Farmington, MN  
 JUDGE: G Gillispie  
 DUTCH: 29  
 BOB: Choc SB Hoagland-Wetzel  
 BOS: Blue SD Luedtke  
 BLACK: 7 SB Luedtke  
 BLUE: 3 SB Hoagland-Wetzel  
 BR/GRAY: 1 SB DQ  
 CHOC: 14 SB Hoagland-Wetzel  
 TORT: 4 JB Luedtke

DATE: 5-18-96  
 SHOW: Hare Raisers Youth Club  
 WHERE: Jackson, WY  
 JUDGE: D Kaiser  
 DUTCH: 15  
 BOB: Blk JD NM  
 BOS: Blk JB NM  
 BLACK: 7 JD NM  
 BLUE: 3 SD NM  
 TORT: 3 JB Gabel  
 STEEL: 1 SD Gabel  
 BR/GRAY: 1 JD Gabel

DATE: 5-18-96  
 SHOW: Saginaw Valley R& CBA  
 WHERE: Saginaw, MI  
 JUDGE: L Trausch

DUTCH: 41  
 BOB: Blk JB Micallef  
 BOS: Tort SD McKinley  
 BLACK: 14 JB Micallef  
 BLUE: 4 JB McKinley  
 CHOC: 6 JB Micallef  
 BR/GRAY: 6 JD Regelin  
 STEEL: 3 SB Bowers  
 TORT: 8 SD McKinley

DATE: 5-19-96  
 SHOW: Baltimore & Howard Co  
 WHERE: Friendship, MD  
 JUDGE: E Stewart & R Brewer  
 DUTCH: 109  
 BOB: Steel SD Bounds  
 BOS: Choc JB Wood  
 BLACK: 37 JB Preede  
 BLUE: 17 SD Wood  
 BR/GRAY: 14 JD Bounds  
 CHOC: 16 JB Wood  
 STEEL: 9 SD Bounds  
 TORT: 16 SB Pecaric

DATE: 5-19-96  
 SHOW: Crazy-8 RCBA  
 WHERE: Canby, OR  
 JUDGE: R Hassenpflug  
 DUTCH: 12  
 BOB: Blk JB Thomas  
 BOS: Blue SD Brak  
 BLACK: 6 JB Thomas  
 BLUE: 4 SD Brak  
 TORT: 2 SB Thomas

DATE: 5-19-96  
 SHOW: Central MA RBN  
 WHERE: Barre, MA  
 JUDGE: G Fellers  
 DUTCH: 3  
 WINNER NM

DATE: 5-19-96  
 SHOW: SW Wisconsin RC  
 WHERE: Mineral Point, WI  
 JUDGE: R Mauck  
 DUTCH: 20  
 BOB: Choc SB Ihrke  
 BOS: Blue SD Ihrke  
 BLACK: 8 JB NM  
 BLUE: 5 SD Ihrke  
 CHOC: 6 SB Ihrke  
 BR/GRAY: 1 SB Guetschow

DATE: 5-19-96  
 SHOW: Eastern Dutch RFC  
 WHERE: West Friendship, MD  
 JUDGE: R Frizzell, Jr  
 DUTCH: 123  
 BOB: Steel SB Cruz  
 BOS: Blue JD Pugh  
 BLACK: 39 SD Pecaric  
 BLUE: 20 SB Wood  
 CHOC: 19 SB Wood  
 TORT: 20 SB Pecaric  
 STEEL: 10 SB Cruz  
 BR/GRAY: 15 JD Bounds

DATE: 5-19-96  
 SHOW: Central MA RBN  
 WHERE: Barre, MA  
 \*\*\* Cont'd next page \*\*\*

**OPEN SHOW REPORTS**

JUDGE: G Fellers  
 DUTCH: 51  
 BOB: Blk SB NM  
 BOS: Choc SD Dahl  
 BLACK: 15 SB NM  
 BLUE: 9 SD Sartori  
 BR/GRAY: 7 JD Dahik  
 CHOC: 9 JB NM  
 STEEL: 5 SD NM  
 TORT: 6 SB Sartori

DATE: 5-19-96  
 SHOW: Livingston Co RB  
 WHERE: Pontiac, IL  
 JUDGE: R Gehr  
 DUTCH: 22  
 BOB: Blk SB D&T Kikkert  
 BOS: Blk SD D&T Kikkert  
 BLACK: 9 SB D&T Kikkert  
 BLUE: 2 JB W&T Coffey  
 CHOC: 4 SD Graflund  
 TORT: 7 SB Graflund

DATE: 5-19-96  
 SHOW: Nebraska R&CBA  
 WHERE: Springfield, NE  
 JUDGE: B Everson  
 DUTCH: 28  
 BOB: Blk JB NM  
 BOS: Blk SD NM  
 BLACK: 10 JB NM  
 BLUE: 7 JD Haldeman  
 CHOC: 8 JB Haldeman  
 STEEL: 3 SB Lahmann

DATE: 5-25-96  
 SHOW: Huron Co RB  
 WHERE: Norwalk, OH  
 JUDGE: R Allebach  
 DUTCH: 25  
 BOB: Blk SB Hessick-Fooce  
 BOS: Br/Gray JD Hessick-Fooce  
 BLACK: 10 SB Hessick-Fooce  
 BLUE: 3 JB Nixon  
 CHOC: 2 JB Hessick-Fooce  
 STEEL: 6 SB Nixon  
 BR/GRAY: 4 JD Hessick-Fooce

DATE: 5-25-96  
 SHOW: NE PA R&CA  
 WHERE: Harford, PA  
 JUDGE: H Keller  
 DUTCH: 42  
 BOB: Blue JB S&S Esterly  
 BOS: Blue JD S&S Esterly  
 BLACK: 16 JD S&S Esterly  
 BLUE: 11 JB S&S Esterly  
 CHOC: 7 JB S&S Esterly  
 BR/GRAY: 4 SD Cruz  
 STEEL: 1 SB Cruz  
 TORT: 3 SB Cruz

DATE: 5-25-96  
 SHOW: Huntington Co Exhibition  
 WHERE: Huntington, IN  
 JUDGE: G Grimm  
 DUTCH: 46  
 BOB: Tort SD D&D Schwartz  
 BOS: Blue SB Worden  
 BLACK: 18 JD D&D Schwartz  
 BLUE: 12 SB Worden  
 CHOC: 3 SD Jock

BR/GRAY: 5 JD Miller  
 STEEL: 3 SD Miller  
 TORT: 5 SD D&D Schwartz

DATE: 5-25-96  
 SHOW: Huntington Co Exhibition  
 WHERE: Huntington, IN  
 JUDGE: G Raisor  
 DUTCH: 45  
 BOB: Blk JB Shaw  
 BOS: Tort SD D&D Scharzt  
 BLACK: 18 JB Shaw  
 BLUE: 11 SB Worden  
 CHOC: 3 SD Jock  
 BR/GRAY: 5 SB R&K Rabbitry  
 STEEL: 3 SB Miller  
 TORT: 5 SD D&D Schwartz

DATE: 5-25-96  
 SHOW: Great River RC  
 WHERE: St Croix Falls, WI  
 JUDGE: R Riddle  
 DUTCH: 44  
 BOB: Choc SB Hoagland-Wetzel  
 BOS: Choc JD Hoagland-Wetzel  
 BLACK: 11 JB Hoagland-Wetzel  
 BLUE: 8 SB Hoagland-Wetzel  
 CHOC: 17 SB Hoagland-Wetzel  
 BR/GRAY: 4 SD Cheney  
 STEEL: 1 SD DQ  
 TORT: 3 SB Larson

DATE: 5-25-96  
 SHOW: Indianhead RB  
 WHERE: St Croix Falls, WI  
 JUDGE: S Zaruba  
 DUTCH: 27  
 BOB: Blue SB Statler  
 BOS: Blue JD Statler  
 BLACK: 6 JD Bach  
 BLUE: 6 SB Statler  
 CHOC: 6 SD Cheney  
 BR/GRAY: 4 SD Cheney  
 STEEL: 2 SD NM  
 TORT: 3 SB Larson

DATE: 5-25-96  
 SHOW: North Island RBA  
 WHERE: Courtenay, BC, Canada  
 JUDGE: P Butcher  
 DUTCH: 14  
 BOB: Blk JD Currie  
 BOS: Blk JB Currie  
 BLACK: 8 JD Currie  
 BLUE: 3 SB NM  
 BR/GRAY: 3 SB NM

DATE: 5-25-96  
 SHOW: Applegate Trail R&CB  
 WHERE: Klamath Falls, OR  
 JUDGE: B Ramsey  
 DUTCH: 32

BOB: Blk SB Richardson  
 BOS: Blue JD Richardson  
 BLACK: 9 SB Richardson  
 BLUE: 8 JD Richardson  
 BR/GRAY: 3 SD Burke  
 CHOC: 5 JB Burke  
 STEEL: 3 JD Burke  
 TORT: 4 JD Burke

DATE: 5-25-96  
 SHOW: Crossroads RBA  
 WHERE: Taylorsville, NC  
 JUDGE: J Green  
 DUTCH: 35  
 BOB: Choc JB Wood  
 BOS: Blk SD NM  
 BLACK: 7 SD NM  
 BLUE: 9 SB Wood  
 CHOC: 6 JB Wood  
 BR/GRAY: 3 SB Wood  
 STEEL: 5 SB R&M Brewer  
 TORT: 5 SB McKenna

DATE: 5/25-5/26/96  
 SHOW: High Plains RC  
 WHERE: Denver, CO  
 JUDGE: B Fulkles  
 DUTCH: 2  
 BOB: Blue JB NM  
 BLUE: 2 JB NM

DATE: 5-26-96  
 SHOW: Huntington Co Exhibition  
 WHERE: Huntington, IN  
 JUDGE: B Dumas  
 DUTCH: 26  
 BOB: Tort SD D&D Schwartz  
 BOS: Blue JB W&T Coffey  
 BLACK: 11 JD D&D Schwartz  
 BLUE: 5 SD D&T Kikkert  
 CHOC: 2 SD Jock  
 BR/GRAY: 2 JD Regelin  
 STEEL: 2 JD Regelin  
 TORT: 4 SD D&D Schwartz

DATE: 5-26-96  
 SHOW: Huntington Co Exhibition  
 WHERE: Huntington, IN  
 JUDGE: K Cunningham  
 DUTCH: 18  
 BOB: Tort SD D&D Schwartz  
 BOS: Blk JB D&D Schwartz  
 BLACK: 9 JD D&D Schwartz  
 BLUE: 4 JB W&T Coffey  
 BR/GRAY: 2 JD Regelin  
 STEEL: 2 JD Regelin  
 TORT: 1 SD D&D Schwartz

DATE: 5-26-96  
 SHOW: Huron Co RB  
 WHERE: Norwalk, OH  
 JUDGE: M D'Amico  
 DUTCH: 24  
 BOB: Steel JD Hessick-Fooce  
 BOS: Steel JB Hessick-Fooce  
 BLACK: 11 SD Hessick-Fooce  
 BLUE: 2 JB Hessick-Fooce  
 CHOC: 3 JD Hessick-Fooce  
 STEEL: 7 JD Hessick-Fooce  
 BR/GRAY: 1 JD Hessick-Fooce

DATE: 5-26-96  
 SHOW: St Croix Valley RBA  
 WHERE: St Croix Falls, WI  
 JUDGE: M Kroening  
 DUTCH: 36  
 BOB: Choc SB Hoagland-Wetzel  
 BOS: Tort JD A/Wetzel  
 BLACK: 11 JB Hoagland-Wetzel  
 BLUE: 2 SB Hoagland-Wetzel  
 CHOC: 13 SB Hoagland-Wetzel

BR/GRAY: 2 SB Larson  
 TORT: 8 JD A/Wetzel

DATE: 5-26-96  
 SHOW: St Croix Valley RBA  
 WHERE: St Croix Falls, WI  
 JUDGE: B Rice  
 DUTCH: 39  
 BOB: Blk SD Gates  
 BOS: Choc SB Hoagland-Wetzel  
 BLACK: 11 SD Gates  
 BLUE: 3 SB Hoagland-Wetzel  
 CHOC: 14 SB Hoagland-Wetzel  
 BR/GRAY: 2 SB Larson  
 STEEL: 1 SD NM  
 TORT: 8 JD A/Wetzel

DATE: 5-26-96  
 SHOW: North Island RBA  
 WHERE: Courtenay, BC, Canada  
 JUDGE: J Coffelt  
 DUTCH: 12  
 BOB: Blk JD Currie  
 BOS: Blk JB Currie  
 BLACK: 6 JD Currie  
 BLUE: 3 SB NM  
 BR/GRAY: 3 JB NM

DATE: 5-26-96  
 SHOW: Green Mountain RBA  
 WHERE: Rutland, VT  
 JUDGE: R Kuehnle  
 DUTCH: 41  
 BOB: Blk SB NM  
 BOS: Blue SD Sartori  
 BLACK: 14 SB NM  
 BLUE: 7 SD Sartori  
 CHOC: 8 JD NM  
 TORT: 4 JD Dahl  
 STEEL: 3 SD Dahl  
 BR/GRAY: 5 JD Dahl

DATE: 5-31-96  
 SHOW: Richland Co RBA  
 WHERE: Mansfield, OH  
 JUDGE: H Rice  
 DUTCH: 8  
 BOB: Blk JB NM  
 BOS: Blk SD Stinehelfer  
 BLACK: 4 JB NM  
 BLUE: 2 SB Stinehelfer  
 CHOC: 1 SB NM  
 STEEL: 1 SB Stinehelfer

DATE: 6-1-96  
 SHOW: Mid-MO Youth & 4-H  
 WHERE: Linn, MO  
 JUDGE: D Hauser  
 DUTCH: 2  
 WINNER NM

DATE: 6-1-96  
 SHOW: Eastern Idaho RB  
 WHERE: Pocatello, ID  
 JUDGE: C Zemny  
 DUTCH: 28  
 BOB: Blue JD Hall  
 BOS: Blk JB Leonard  
 BLACK: 6 SD Leonard  
 \*\*\*Cont'd next page\*\*\*

## OPEN SHOW REPORTS

BLUE: 7 JD Hall  
 CHOC: 1 JB NM  
 BR/GRAY: 6 JD Hall  
 STEEL: 2 SB Hall  
 TORT: 6 SB L/Loucks

DATE: 6-1-96  
 SHOW: Beartooth Bunny Bunch  
 WHERE: Red Lodge, MT  
 JUDGE: F Roberts  
 DUTCH: 10  
 BOB: Blk JB Thompson  
 BOS: Br/Gray JD Gabel  
 BLACK: 4 JB Thompson  
 BLUE: 2 JD Vigil  
 TORT: 1 JB Gabel  
 STEEL: 2 SB Vigil  
 GRAY: 1 JD Gabel

DATE: 6-1-96  
 SHOW: Lorain Co RCBA  
 WHERE: Wellington, OH  
 JUDGE: K Bogan  
 DUTCH: 95  
 BOB: Tort JB Hooper  
 BOS: Steel JD Hooper  
 BLACK: 29 SD Hooper  
 BLUE: 11 SB Hooper  
 CHOC: 16 JB P&S Peters  
 BR/GRAY: 10 JB Hooper  
 STEEL: 16 JD Hooper  
 TORT: 13 JB Hooper

DATE: 6-1-96  
 SHOW: W Puget Sound R&CC  
 WHERE: Bremerton, WA  
 JUDGE: K Waliser  
 DUTCH: 54  
 BOB: Blue SD Brak  
 BOS: Br/Gray JB Nelson  
 BLACK: 10 JB Nelson  
 BLUE: 13 SD Brak  
 CHOC: 11 SD VanBuren  
 BR/GRAY: 6 JB Nelson  
 STEEL: 2 JB J&R Coffelt  
 TORT: 12 SB Thomas

DATE: 6-1-96  
 SHOW: Beartooth Bunny Bunch  
 WHERE: Red Lodge, MT  
 JUDGE: E Johnston  
 DUTCH: 17  
 BOB: Br/Gray JD Gabel  
 BOS: Blk JB NM  
 BLACK: 6 JB NM  
 BLUE: 5 JB Heller  
 CHOC: 1 SB NM  
 TORT: 2 JB NM  
 STEEL: 2 SB Vigil  
 BR/GRAY: 1 JD Gabel

DATE: 6-1-96  
 SHOW: California Dutch RC  
 WHERE: Vacaville, CA  
 JUDGE: D Matthews  
 DUTCH: 70  
 BOB: Choc JD J&F Schettler  
 BOS: Blk JB J&F Schettler  
 BLACK: 21 JB J&F Schettler  
 BLUE: 12 JB Lewis  
 BR/GRAY: 11 SD Burke  
 CHOC: 13 JD J&F Schettler

STEEL: 4 JD Burke  
 TORT: 9 SB J&F Schettler

DATE: 6-1-96  
 SHOW: California Dutch RC  
 WHERE: Vacaville, CA  
 JUDGE: J Coleman  
 DUTCH: 70  
 BOB: Tort SD J&F Schettler  
 BOS: Tort SB J&F Schettler  
 BLACK: 21 SD J&F Schettler  
 BLUE: 12 JB Lewis  
 BR/GRAY: 11 JB Bennett  
 CHOC: 13 SB Bennett  
 STEEL: 4 SB Burke  
 TORT: 9 SD J&F Schettler

DATE: 6-1-96  
 SHOW: Grimes Co Fair Assoc.  
 WHERE: Navasota, TX  
 JUDGE: JL Dino  
 DUTCH: 21  
 BOB: Blk JD DWade  
 BOS: Blue JB CWade  
 BLACK: 13 JD DWade  
 BLUE: 3 JB CWade  
 CHOC: 5 SB DWade

DATE: 6-1-96  
 SHOW: Brookings RC  
 WHERE: Brookings, SD  
 JUDGE: D Shrader  
 DUTCH: 72  
 BOB: Blk SB Blythe  
 BOS: Tort JD Blythe  
 BLACK: 24 SB Blythe  
 BLKUE: 17 JB Blythe  
 CHOC: 5 JB Blythe  
 TORT: 12 JB Blythe  
 STEEL: 5 JB NM  
 BR/GRAY: 9 JB NM

DATE: 6-1-96  
 SHOW: California Dutch RC  
 WHERE: Vacaville, CA  
 JUDGE: B Meyer  
 DUTCH: 70  
 BOB: Blk SB NM  
 BOS: Blue SD NM  
 BLACK: 20 SB NM  
 BLUE: 13 SD NM  
 BR/GRAY: 11 JD Bennett  
 CHOC: 13 JB Bullis  
 STEEL: 4 SB Burke  
 TORT: 9 SB J&F Schettler

DATE: 6-1-96  
 SHOW: San Fernando Valley RBA  
 WHERE: Ventura, CA  
 JUDGE: L Bell  
 DUTCH: 84  
 BOB: Blue SD Dobson  
 BOS: Tort SB Dobson  
 BLACK: 36 JD Dobson  
 BLUE: 19 SD Dobson  
 BR/GRAY: 13 SD Puente  
 STEEL: 5 SD Puente  
 TORT: 11 SB Dobson

DATE: 6-1-96  
 SHOW: Roadrunner Dutch CLUB  
 WHERE: Ventura, CA  
 JUDGE: P Perry  
 DUTCH: 74  
 BOB: Blk SB Diaz  
 BOS: Blk JD Diaz  
 BLACK: 32 SB Diaz  
 BLUE: 18 JB Eubank  
 TORT: 7 SB Dobson  
 STEEL: 5 SB Puente  
 BR/GRAY: 12 JD J/Allen

DATE: 6-2-96  
 SHOW: Iroquois RBA  
 WHERE: Crescent City, IL  
 JUDGE: W Grebner  
 DUTCH: 44  
 BOB: Blk SB D&T Kikkert  
 BOS: Br/Gray JD Rawailot  
 BLACK: 12 SB D&T Kikkert  
 BLUE: 6 JB McAtee  
 CHOC: 3 SD Graffund  
 TORT: 6 JB Graffund  
 STEEL: 4 SB McAtee  
 BR/GRAY: 13 JD Rawailot

DATE: 6-2-96  
 SHOW: Top Of Ohio North Coast  
 WHERE: Wellington, OH  
 JUDGE: B Shaftoe  
 DUTCH: 64  
 BOB: Br/Gray JD Hooper  
 BOS: Tort SB Hooper  
 BLACK: 18 JB B/Hessick  
 BLUE: 4 JD Hooper  
 CHOC: 8 SB Hooper  
 TORT: 11 SB Hooper  
 STEEL: 14 JD Hooper  
 BR/GRAY: 9 JD Hooper

DATE: 6-2-96  
 SHOW: Upper Midwest Dutch RC  
 WHERE: Stockton, MN  
 JUDGE: N Nelson  
 DUTCH: 99  
 BOB: Blk SB Strandwitz  
 BOS: Choc JD Ihrke  
 BLACK: 32 SB Strandwitz  
 BLUE: 15 SD Luedtke  
 CHOC: 25 JD Ihrke  
 TORT: 14 SB E&S Mixdorf  
 STEEL: 5 SD Bengtson's  
 BR/GRAY: 8 JD Bengtson's

DATE: 6-8-96  
 SHOW: High Desert RBA  
 WHERE: Victorville, CA  
 JUDGE: R Shumaker  
 DUTCH: 27  
 BOB: Blue JB Eubank  
 BOS: Br/Gray JD Eubank  
 BLACK: 11 SD Eubank  
 BLUE: 8 JB Eubank  
 CHOC: 3 JD Duncan  
 BR/GRAY: 4 JD Eubank  
 TORT: 1 SB NM

DATE: 6-8-96  
 SHOW: Broome Co RB  
 WHERE: Ithaca, NY  
 JUDGE: B Burdick

DUTCH: 9  
 BOB: Blk SB K&D Emerson  
 BOS: Blk SD K&D Emerson  
 BLACK: 5 SB K&D Emerson  
 BLUE: 2 SB K&D Emerson  
 CHOC: 2 SD NM

DATE: 6-8-96  
 SHOW: California Dutch RC  
 WHERE: Reno, NV  
 JUDGE: C Zemny  
 DUTCH: 85  
 BOB: Blk SD J&F Schettler  
 BOS: Tort JB J&F Schettler  
 BLACK: 23 SD J&F Schettler  
 BLUE: 16 JD Bullis  
 BR/GRAY: 14 JD Bennett  
 CHOC: 13 JB J&F Schettler  
 STEEL: 9 JB NM  
 TORT: 10 JB J&F Schettler

DATE: 6-8-96  
 SHOW: California Dutch RC  
 WHERE: Reno, NV  
 JUDGE: D Brak  
 DUTCH: 88  
 BOB: Br/Gray SD Burke  
 BOS: Tort SB J&F Schettler  
 BLACK: 25 SB Klopfer  
 BLUE: 17 JD Burke  
 BR/GRAY: 13 SD Burke  
 CHOC: 14 JB Bullis  
 STEEL: 9 SB Burke  
 TORT: 10 SB J&F Schettler

DATE: 6-9-96  
 SHOW: NE Vermont RBA  
 WHERE: Lyndonville, VT  
 JUDGE: E Stewart  
 DUTCH: 3  
 ALL WINNERS NM

DATE: 6-9-96  
 SHOW: High Desert Hoppers Yth  
 WHERE: Carson City, NV  
 JUDGE: D Matthews  
 DUTCH: 84  
 BOB: Blk JB J&F Schettler  
 BOS: Br/Gray JD Bennett  
 BLACK: 25 JB J&F Schettler  
 BLUE: 19 SD NM  
 BR/GRAY: 12 JD Bennett  
 CHOC: 14 JD J&F Schettler  
 STEEL: 6 JB NM  
 TORT: 8 SB J&F Schettler

DATE: 6-9-96  
 SHOW: Van Wert Co RBA  
 WHERE: Celina, OH  
 JUDGE: K Cunningham  
 DUTCH: 31  
 BOB: Blue JD R&K Rabbitry  
 BOS: Blue JB R&K Rabbitry  
 BLACK: 6 JD R&K Rabbitry  
 BLUE: 10 JD R&K Rabbitry  
 CHOC: 2 SB NM  
 BR/GRAY: 3 SB R&K Rabbitry  
 STEEL: 2 SB Miller  
 TORT: 8 JB R&K Rabbitry

## YOUTH SHOW REPORTS

DATE: 1-13-96  
 SHOW: Gabilan Youth RC  
 WHERE: Watsonville, CA  
 JUDGE: B Meyer  
 DUTCH: 41  
 BOB: Bik JB Lewis  
 BOS: Bik SD Toth  
 BLACK: 16 JB Lewis  
 BLUE: 17 SB Toth  
 CHOC: 2 SB Uchiyama  
 BR/GRAY: 3 SB KWilliamson  
 STEEL: 1 SB B&T Lugo  
 TORT: 2 SB Toth

DATE: 1-13-96  
 SHOW: Gabilan Youth RC  
 WHERE: Watsonville, CA  
 JUDGE: S Byrom  
 DUTCH: 28  
 BOB: Bik JB Lewis  
 BOS: Bik SD Toth  
 BLACK: 11 JB Lewis  
 BLUE: 11 SB Toth  
 CHOC: 2 SD Uchiyama  
 BR/GRAY: 1 SB NM  
 STEEL: 1 SB B&T Lugo  
 TORT: 2 SD Toth

DATE: 2-10-96  
 SHOW: Gabilan Youth RC  
 WHERE: Angels Camp, CA  
 JUDGE: C Zemny  
 DUTCH: 30  
 BOB: Bik JD NM  
 BOS: Bik JB B&T Lugo  
 BLACK: 15 JD NM  
 BLUE: 7 JD Anderson  
 CHOC: 2 SD NM  
 TORT: 5 SB NM  
 STEEL: 1 SB B&T Lugo

DATE: 3-16-96  
 SHOW: South Central Iowa RBA  
 WHERE: Winterset, IA  
 JUDGE: M Avesing  
 DUTCH: 32  
 BOB: Steel JD McCune  
 BOS: Tort SB Jones  
 BLACK: 13 SB NM  
 BLUE: 9 JD McCune  
 CHOC: 5 JD McCune  
 TORT: 1 SB Jones  
 STEEL: 1 JD McCune  
 BR/GRAY: 3 SD NM

DATE: 3-17-96  
 SHOW: Pony Express RC  
 WHERE: Cameron, MO  
 JUDGE: R Wallace  
 DUTCH: 19  
 BOB: Choc JB Powell  
 BOS: Br/Gray JD Redden  
 BLACK: 9 SB Powell  
 BLUE: 3 SB Powell  
 CHOC: 4 JB Powell  
 TORT: 2 SD NM  
 BR/GRAY: 1 JD Redden

DATE: 3-23-96  
 SHOW: Empire State RBA  
 WHERE: Fulton, NY

JUDGE: B Van Velden  
 DUTCH: 12  
 BOB: Bik SD NM  
 BOS: Tort SB Hirsch  
 BLACK: 5 SD NM  
 BLUE: 2 SD NM  
 CHOC: 1 SD NM  
 TORT: 3 SB Hirsch  
 STEEL: 1 JB NM

DATE: 3-31-96  
 SHOW: Tibbar RBA  
 WHERE: New Lenox, IL  
 JUDGE: J Soper  
 DUTCH: 42  
 BOB: Bik SB NM  
 BOS: Bik JD Welsh  
 BLACK: 13 SB NM  
 BLUE: 11 SD C&P Schwartz  
 CHOC: 2 JB Woods  
 TORT: 6 JB NM  
 STEEL: 5 SB Woods  
 BR/GRAY: 5 JB Woods

DATE: 3-31-96  
 SHOW: Busy Bunnies Youth Club  
 WHERE: Springfield, OH  
 JUDGE: K Bogan  
 DUTCH: 23  
 BOB: Bik SB Pummill  
 BOS: Bik SD NM  
 BLACK: 10 SB Pummill  
 BLUE: 7 JB Pummill  
 CHOC: 4 SB NM  
 BR/GRAY: 2 JD Pummill

DATE: 4-4-96  
 SHOW: Berks Co R&CBA  
 WHERE: Leesport, PA  
 JUDGE: B Burdick  
 DUTCH: 21  
 BOB: Br/Gray SB Gittleman  
 BOS: Br/Gray SD NM  
 BLACK: 8 SB NM  
 BLUE: 3 JD NM  
 CHOC: 4 SB Gittleman  
 TORT: 4 SB NM  
 GRAY: 2 SB Gittleman

DATE: 4-6-96  
 SHOW: Pikes Peak RBA  
 WHERE: Castle Rock, CO  
 JUDGE: R Lawrence  
 DUTCH: 25  
 BOB: Bik SB Metcalf  
 BOS: Blue SD Metcalf  
 BLACK: 12 SB Metcalf  
 BLUE: 5 SD Metcalf  
 BR/GRAY: 1 JB NM  
 CHOC: 3 SB NM  
 TORT: 4 SB Metcalf

DATE: 4-6-96  
 SHOW: Hoosier Dutch RF  
 WHERE: Lafayette, IN  
 JUDGE: D Hauser  
 DUTCH: 57  
 BOB: Tort SB Hurst  
 BOS: Bik JD Welsh  
 BLACK: 14 JD Welsh  
 BLUE: 7 SD Hurst

CHOC: 11 SD NM  
 TORT: 12 SB Hurst  
 STEEL: 5 SB NM  
 BR/GRAY: 8 SB NM

DATE: 4-6-96  
 SHOW: NE Tower on the Plains  
 WHERE: Seward, NE  
 JUDGE: D Kroenke  
 DUTCH: 49  
 BOB: Bik JB Wagoner  
 BOS: Blue SD Hederstedt  
 BLACK: 20 JB Wagoner  
 BLUE: 13 SD Hederstedt  
 BR/GRAY: 1 SD Wagoner  
 CHOC: 11 SB NM  
 STEEL: 1 JD NM  
 TORT: 3 JD NM

DATE: 4-6-96  
 SHOW: Golden Prairie RBA  
 WHERE: Lafayette, IN  
 JUDGE: J Marshall  
 DUTCH: 49  
 BOB: Choc SD NM  
 BOS: Blue JB Welsh  
 BLACK: 13 SB Slack  
 BLUE: 6 JB Welsh  
 CHOC: 11 SD NM  
 BR/GRAY: 8 SD Woods  
 STEEL: 6 SB Gochenour  
 TORT: 5 SB Hoff

DATE: 4-13-96  
 SHOW: Cattaraugus Co RBA  
 WHERE: Olean, NY  
 JUDGE: H Keller  
 DUTCH: 9  
 BOB: Tort SB Hirsch  
 BOS: Bik SD NM  
 BLACK: 4 SB NM  
 TORT: 5 SB Hirsch

DATE: 4-13-96  
 SHOW: Mid-Jersey R&CBA  
 WHERE: Augusta, NJ  
 JUDGE: G Long  
 DUTCH: 25  
 BOB: Blue JB Orwig  
 BOS: Bik SD Orwig  
 BLACK: 10 SD Orwig  
 BLUE: 6 JB Orwig  
 BR/GRAY: 1 SB Gittleman  
 CHOC: 4 SB Gittleman  
 TORT: 4 JD Cruz

DATE: 4-13-96  
 SHOW: Illinois RB  
 WHERE: Springfield, IL  
 JUDGE: R Gehr  
 DUTCH: 40  
 BOB: Bik SB Woods  
 BOS: Bik SD NM  
 BLACK: 13 SB Woods  
 BLUE: 16 JB NM  
 CHOC: 3 SB NM  
 TORT: 3 SB Woods  
 STEEL: 2 SD Woods  
 BR/GRAY: 3 SB Woods

DATE: 4-13-96  
 SHOW: Huntington RBVA  
 WHERE: Columbia City, IN  
 JUDGE: G Raisor  
 DUTCH: 18  
 BOB: Tort SB Hurst  
 BOS: Choc SD D&D Hunter  
 BLACK: 7 SB D&D Hunter  
 BLUE: 2 SB Hurst  
 CHOC: 4 SD D&D Hunter  
 TORT: 5 SB Hurst

DATE: 4-13-96  
 SHOW: Midwest Trailblazers RC  
 WHERE: Sedalia, MO  
 JUDGE: G Johnston  
 DUTCH: 15  
 BOB: Bik SB NM  
 BOS: Bik SD Rugen  
 BLACK: 7 SB NM  
 BLUE: 4 SB Redden  
 CHOC: 1 JB Powell  
 BR/GRAY: 3 SB NM

DATE: 4-13-96  
 SHOW: Hop-2-It RBA  
 WHERE: St. Johns, MI  
 JUDGE: K Ehnis  
 DUTCH: 28  
 BOB: Bik SD Smith  
 BOS: Blue SB Smith  
 BLACK: 10 SD Smith  
 BLUE: 8 SB Smith  
 CHOC: 5 JD Gottschalk  
 TORT: 3 SB Gottschalk  
 BR/GRAY: 2 SD NM

DATE: 4-13-96  
 SHOW: Cal State R&CBA  
 WHERE: Tulare, CA  
 JUDGE: M Hidalgo  
 DUTCH: 48  
 BOB: Bik SB B&T Lugo  
 BOS: Bik SD Toth  
 BLACK: 25 B&T Lugo  
 BLUE: 7 SB NM  
 CHOC: 1 JB NM  
 BR/GRAY: 7 JD Keegan  
 STEEL: 4 SB Dowdy  
 TORT: 4 JD NM

DATE: 4-13-96  
 SHOW: Mid-City RC  
 WHERE: Yankton, SD  
 JUDGE: B Rice  
 DUTCH: 17  
 ALL WINNERSS NM

DATE: 4-13-96  
 SHOW: Tri-Co RB  
 WHERE: Jefferson, WI  
 JUDGE: R Goedderz  
 DUTCH: 58  
 BOB: Bik SB Worzella  
 BOS: Bik SD Anderson  
 BLACK: 23 SB Worzella  
 BLUE: 17 SB Graveen  
 CHOC: 6 SB Field  
 BR/GRAY: 1 JB Aisbet  
 TORT: 11 SB NM

## YOUTH SHOW REPORTS

DATE: 4-14-96  
 SHOW: Mississippi Valley RBA  
 WHERE: DeWitt, IA  
 JUDGE: G Grimm  
 DUTCH: 19  
 BOB: Blue SB Chapman  
 BOS: Blue SD NM  
 BLACK: 8 JB Chapman  
 BLUE: 9 SB Chapman  
 BR/GRAY: 1 SD NM  
 TORT: 1 JB Chapman

DATE: 4-14-96  
 SHOW: Mississippi Valley RBA  
 WHERE: DeWitt, IA  
 JUDGE: B Rice  
 DUTCH: 6  
 BOB: Blk JB Chapman  
 BOS: Blue JD Chapman  
 BLACK: 3 JB Chapman  
 BLUE: 3 JD Chapman

DATE: 4-14-96  
 SHOW: Midwest Trailblazers RC  
 WHERE: Sedalia, MO  
 JUDGE: B Dodge  
 DUTCH: 18  
 BOB: Blue SB NM  
 BOS: Br/Gray JD Redden  
 BLACK: 10 SB Powell  
 BLUE: 4 SB NM  
 CHOC: 1 JB Powell  
 BR/GRAY: 3 SB NM

DATE: 4-14-96  
 SHOW: Cal State R&CBA  
 WHERE: Tulare, CA  
 JUDGE: D Matthews  
 DUTCH: 49  
 BOB: Blk JB Keegan  
 BOS: Blk JD Lewis  
 BLACK: 24 JB Keegan  
 BLUE: 10 SB NM  
 CHOC: 1 JB NM  
 BR/GRAY: 6 JD Keegan  
 STEEL: 4 JD Puente  
 TORT: 4 SB Toth

DATE: 4-14-96  
 SHOW: Springfield RBC  
 WHERE: Springfield, IL  
 JUDGE: I Miller  
 DUTCH: 23  
 BOB: Blk SB NM  
 BOS: Blue JD Woods  
 BLACK: 9 SB NM  
 BLUE: 3 JB NM  
 CHOC: 3 JB Woods  
 TORT: 3 SB Woods  
 STEEL: 2 SD Woods  
 BR/GRAY: 3 SD Woods

DATE: 4-14-96  
 SHOW: Jacksonville Area RB  
 WHERE: Springfield, IL  
 JUDGE: K Cunningham  
 DUTCH: 22  
 BOB: Blk SB Woods  
 BOS: Blue SD Woods  
 BLACK: 9 SB Woods  
 BLUE: 3 JD Woods

CHOC: 2 JB Woods  
 TORT: 3 SB Woods  
 STEEL: 2 SB NM  
 BR/GRAY: 3 SB Woods

DATE: 4-14-96  
 SHOW: Akron RC  
 WHERE: Tallmadge, OH  
 JUDGE: M D'Amico  
 DUTCH: 22  
 BOB: Choc JB Shields  
 BOS: Blk JD NM  
 BLACK: 3 JD NM  
 BLUE: 3 SD NM  
 CHOC: 13 JB Shields  
 STEEL: 2 SB Townsend  
 BR/GRAY: 1 JB Townsend

DATE: 4-14-96  
 SHOW: Tri-Co RB  
 WHERE: Jefferson, WI  
 JUDGE: M Avesing  
 DUTCH: 39  
 BOB: Blk SB Worzella  
 BOS: Tort JD NM  
 BLACK: 15 SB Worzella  
 BLUE: 6 SD Anderson  
 CHOC: 3 SB Field  
 BR/GRAY: 1 JB DQ  
 TORT: 14 JD NM

DATE: 4-20-96  
 SHOW: Lancaster Co R&CBA  
 WHERE: Lampeter, PA  
 JUDGE: J Hardin  
 DUTCH: 13  
 ALL WINNERS NM

DATE: 4-20-96  
 SHOW: Gabilan Youth RC  
 WHERE: Paso Robles, CA  
 JUDGE: P Perry  
 DUTCH: 44  
 BOB: Blk SB B&T Lugo  
 BOS: Blk JD C/Allen  
 BLACK: 23 SB B&T Lugo  
 BLUE: 7 SD NM  
 BR/GRAY: 6 SD C/Allen  
 CHOC: 2 SB NM  
 STEEL: 1 SD N/Allen  
 TORT: 5 SB Toth

DATE: 4-20-96  
 SHOW: So Central MI RBA  
 WHERE: Mason, MI  
 JUDGE: B Shaftoe  
 DUTCH: 55  
 BOB: Br/Gray JB Regelin  
 BOS: Blue JD Gottschalk  
 BLACK: 21 JB NM  
 BLUE: 16 SB Smith  
 BR/GRAY: 4 JB Regelin  
 CHOC: 9 SB NM  
 TORT: 5 SD Regelin

DATE: 4-20-96  
 SHOW: Jackson Purchase RBA  
 WHERE: Hopkinsville, KY  
 JUDGE: R Waggoner  
 DUTCH: 7  
 ALL WINNERS NM

DATE: 4-20-96  
 SHOW: Whitewater Valley RBA  
 WHERE: Connersville, IN  
 JUDGE: T Fender  
 DUTCH: 13  
 BOB: Br/Gray SB McKinney  
 BOS: Choc SD NM  
 BLACK: 4 JD McKinney  
 BLUE: 5 SD McKinney  
 BR/GRAY: 2 SB McKinney  
 CHOC: 2 SD NM

DATE: 4-20-96  
 SHOW: Hop To It RC  
 WHERE: Hutchinson, MN  
 JUDGE: R Goedderz  
 DUTCH: 33  
 BOB: Blk SD NM  
 BOS: Br/Gray SB NM  
 BLACK: 7 SD NM  
 BLUE: 12 JD Wenger  
 CHOC: 7 SB Williams  
 BR/GRAY: 5 SB NM  
 STEEL: 1 JD D&D Luedtke  
 TORT: 1 SD NM

DATE: 4-20-96  
 SHOW: Mid Valley R&CBA  
 WHERE: Rhinebeck, NY  
 JUDGE: F Del Mastro  
 DUTCH: 17  
 BOB: Blk SB Parlati  
 BOS: Tort SD Gittleman  
 BLACK: 8 SB Parlati  
 BLUE: 3 SD Parlati  
 CHOC: 3 SB Day  
 BR/GRAY: 1 SB Gittleman  
 TORT: 2 SD Gittleman

DATE: 4-21-96  
 SHOW: NE Ohio RF  
 WHERE: Jefferson, OH  
 JUDGE: H Keller  
 DUTCH: 12  
 BOB: Blue SB Fonner  
 BOS: Choc JD B/Townsend  
 BLUE: 4 SB Fonner  
 CHOC: 6 JB Shields  
 STEEL: 1 SB M/Townsend  
 BR/GRAY: 1 JD M/Townsend

DATE: 4-21-96  
 SHOW: Freestate Domestic RC  
 WHERE: Gaithersburg, MD  
 JUDGE: B Rice  
 DUTCH: 22  
 BOB: Blue SD Anderson  
 BOS: Blk SB NM  
 BLACK: 8 SB NM  
 BLUE: 4 SD Anderson  
 CHOC: 3 JB NM  
 BR/GRAY: 3 SD NM  
 STEEL: 1 SB Anderson  
 TORT: 3 SD Anderson

DATE: 4-21-96  
 SHOW: Whitewater Valley RBA  
 WHERE: Connersville, IN  
 JUDGE: R Riddle  
 DUTCH: 7  
 BOB: Br/Gray SB McKinney

BOS: Blk JD McKinney  
 BLACK: 2 JD McKinney  
 BLUE: 3 SD McKinney  
 BR/GRAY: 1 SB McKinney  
 CHOC: 1 SB McKinney

DATE: 4-21-96  
 SHOW: Teays Valley RBA  
 WHERE: Lucasville, OH  
 JUDGE: R Byrne  
 DUTCH: 6  
 BOB: Blk JB Peters  
 BOS: Blk SD Peters  
 BLACK: 3 JB Peters  
 BLUE: 1 SB NM  
 CHOC: 1 JD Peters  
 BR/GRAY: 1 SD Pummill

DATE: 4-21-96  
 SHOW: Decatur Area RBA  
 WHERE: Decatur, IL  
 JUDGE: Unknown  
 DUTCH: 3  
 ALL WINNERS NM

DATE: 4-21-96  
 SHOW: Southwest RBA  
 WHERE: Ft Worth, TX  
 JUDGE: R Lawrence  
 DUTCH: 64  
 BOB: Blk SB Sparks  
 BOS: Choc JD Walker  
 BLACK: 18 SB Sparks  
 BLUE: 8 SD Lewis  
 CHOC: 6 JD Walker  
 TORT: 15 SB Hergert  
 STEEL: 8 SD Crow  
 BR/GRAY: 9 SD Sparks

DATE: 4-21-96  
 SHOW: Fairfield Co RBA  
 WHERE: N. Haven, CT  
 JUDGE: D LaRochelle  
 DUTCH: 11  
 BOB: Blk SB Gittleman  
 BOS: Blue SD Parlati  
 BLACK: 4 SB Gittleman  
 BLUE: 2 SD Parlati  
 CHOC: 2 SB Gittleman  
 TORT: 2 SB Gittleman  
 BR/GRAY: 1 SB Gittleman

DATE: 4-21-96  
 SHOW: Portsmouth RBA  
 WHERE: Lucasville, OH  
 JUDGE: C Backus  
 DUTCH: 15  
 BOB: Blk JB NM  
 BOS: Blk SD NM  
 BLACK: 7 JB NM  
 BLUE: 1 SB NM  
 CHOC: 2 JD NM  
 BR/GRAY: 2 SB McMurray  
 STEEL: 2 JB McMurray  
 TORT: 1 SD McMurray

DATE: 4-27-96  
 SHOW: Rochester Area RC  
 WHERE: Kasson, MN  
 JUDGE: R Steinberg  
 \*\*\* Cont'd next page \*\*\*

## YOUTH SHOW REPORTS

DUTCH: 27  
 BOB: Blk SB Wenger  
 BOS: Blue JD Wenger  
 BLACK: 8 SB Wenger  
 BLUE: 8 SB NM  
 CHOC: 4 SD Wenger  
 BR/GRAY: 2 DQ  
 STEEL: 3 SB Eaton  
 TORT: 2 SB Eaton

DATE: 4/26-4/28/96  
 SHOW: Ohio State Dutch-NDS  
 WHERE: Greenville, OH  
 JUDGE: L Bengtson/K Bogan  
 DUTCH: 289  
 BOB: Blue JB Caldwell/Brown  
 BOS: Br/Gray SD Cruz  
 BLACK: 84 JB Caldwell/Brown  
 BLUE: 73 JB Caldwell/Brown  
 CHOC: 41 SB Graveen  
 BR/GRAY: 31 SD Cruz  
 STEEL: 15 SB Reynolds  
 TORT: 45 SB Hurst

DATE: 4-27-96  
 SHOW: S. Texas RBA  
 WHERE: Yoakum, TX  
 JUDGE: G Gillespie  
 DUTCH: 16  
 BOB: Blk SD NM  
 BOS: Blue JB Lisle  
 BLACK: 8 SD NM  
 BLUE: 8 SD Lisle

DATE: 4-27-96  
 SHOW: Heartland RC of Pierre-SD  
 WHERE: Wessington Springs, SD  
 JUDGE: W Willa  
 DUTCH: 13  
 ALL WINNERS NM

DATE: 4-28-96  
 SHOW: Central Wisconsin RBA  
 WHERE: Marshfield, WI  
 JUDGE: C Stelloh  
 DUTCH: 26  
 BOB: Choc SB Damrow  
 BOS: Blk SD NM  
 BLACK: 15 SB Worzella  
 BLUE: 6 SB Anderson  
 CHOC: 1 SB Damrow  
 TORT: 4 SB NM

DATE: 4-28-96  
 SHOW: Mills County RBA  
 WHERE: Thurman, IA  
 JUDGE: J Crawford  
 DUTCH: 18  
 ALL WINNERS NM

DATE: 5-4-96  
 SHOW: Three Corners RC  
 WHERE: Hutchinson, KS  
 JUDGE: J Jewett  
 DUTCH: 32  
 BOB: Blk JB NM  
 BOS: Steel SD Crow  
 BLACK: 11 JB NM  
 BLUE: 8 SD Hederstedt  
 CHOC: 3 JD Crow  
 STEEL: 2 SD Crow  
 TORT: 8 SB Hergert

DATE: 5-4-96  
 SHOW: Fruit Ridge RF  
 WHERE: Hudsonville, MI  
 JUDGE: W Bouwkamp  
 DUTCH: 18  
 BOB: Blue JD Gottschalk  
 BOS: Blk SB Morley  
 BLACK: 7 SB Morley  
 BLUE: 4 JD Gottschalk  
 CHOC: 2 JD Gottschalk  
 TORT: 2 SB NM  
 BR/GRAY: 3 JB Gottschalk

DATE: 5-4-96  
 SHOW: Owatonna Area RC  
 WHERE: Owatonna, MN  
 JUDGE: A Butler  
 DUTCH: 55  
 BOB: Blue SB Wenger  
 BOS: Tort JD Wenger  
 BLACK: 15 SB D&D Luedtke  
 BLUE: 15 SB Wenger  
 BR/GRAY: 1 SD NM  
 CHOC: 14 SB Wenger  
 STEEL: 5 JD D&D Luedtke  
 TORT: 5 JD Wenger

DATE: 5-4-96  
 SHOW: Phelps Co RBA  
 WHERE: Rolla, MO  
 JUDGE: R Riddle  
 DUTCH: 22  
 BOB: Steel SB Woods  
 BOS: Br/Gray SD Woods  
 BLACK: 6 SB NM  
 BLUE: 1 JD Woods  
 CHOC: 3 JB Woods  
 TORT: 4 JD Woods  
 STEEL: 3 SB Woods  
 BR/GRAY: 5 SB Woods

DATE: 5/4-5/5/96  
 SHOW: Platte River RF  
 WHERE: Henderson, CO  
 JUDGE: B Shaftoe  
 DUTCH: 35  
 BOB: Choc SB NM  
 BOS: Blue SD Metcalf  
 BLACK: 17 SB Sunderman  
 BLUE: 4 SD Metcalf  
 CHOC: 7 SB NM  
 TORT: 6 SB Metcalf  
 BR/GRAY: 1 JB NM

DATE: 5-5-96  
 SHOW: Essex Co R&CBA  
 WHERE: Topsfield, MA  
 JUDGE: L Benoit  
 DUTCH: 4  
 BOB: Blk SD Ardison  
 BLACK: 3 SD Ardison  
 CHOC: 1 SB DQ

DATE: 5-5-96  
 SHOW: Stark Co R&CBA  
 WHERE: Canton, OH  
 JUDGE: P Macy  
 DUTCH: 13  
 BOB: Blk SB NM  
 BOS: Steel SD Townsend

BLACK: 2 SB NM  
 BLUE: 3 JB Townsend  
 CHOC: 7 SD NM  
 STEEL: 1 SD Townsend

DATE: 5-5-96  
 SHOW: Effingham R&CBA  
 WHERE: Altamont, IL  
 JUDGE: G Raisor  
 DUTCH: 24  
 BOB: Br/Gray SB Woods  
 BOS: Blk JD Woods  
 BLACK: 6 JD Woods  
 BLUE: 1 JD Woods  
 CHOC: 5 SD NM  
 TORT: 4 SB Woods  
 STEEL: 3 JB NM  
 BR/GRAY: 5 SB Woods

DATE: 5-5-96  
 SHOW: Northern Illinois RR  
 WHERE: Woodstock, IL  
 JUDGE: R Riddle  
 DUTCH: 4  
 ALL WINNERS NM

DATE: 5-5-96  
 SHOW: Southwestern Ohio RBA  
 WHERE: Xenia, OH  
 JUDGE: R Allebach  
 DUTCH: 20  
 BOB: Blue SB NM  
 BOS: Blk SD NM  
 BLACK: 8 SB Pummill  
 BLUE: 7 SB Weber  
 CHOC: 3 SB Pummill  
 STEEL: 2 SB NM

DATE: 5-5-96  
 SHOW: Red Cedar RB  
 WHERE: Rice Lake, WI  
 JUDGE: B Rice  
 DUTCH: 40  
 BOB: Blue JD Graveen  
 BOS: Blk SB Wenger  
 BLACK: 11 SD Wenger  
 BLUE: 14 JD Graveen  
 CHOC: 8 SD Wenger  
 TORT: 4 JD Wenger  
 STEEL: 3 SD NM

DATE: 5-5-96  
 SHOW: Salt City RBA  
 WHERE: Hutchinson, KS  
 JUDGE: C Addison  
 DUTCH: 32  
 BOB: Blue SD Hederstedt  
 BOS: Blk SB Gardner  
 BLACK: 11 SB Gardner  
 BLUE: 9 SD Hederstedt  
 CHOC: 3 JB Powell  
 TORT: 7 SB Gardner  
 STEEL: 2 SD Kennedy

DATE: 5-11-96  
 SHOW: Montgomery Co Youth RC  
 WHERE: Gaithersburg, MD  
 JUDGE: O Yates  
 DUTCH: 28  
 BOB: Br/Gray SB Cruz  
 BOS: Blue SD NM

BLACK: 11 SB NM  
 BLUE: 4 SD NM  
 CHOC: 3 JB NM  
 BR/GRAY: 5 SB Cruz  
 STEEL: 3 SB Cruz  
 TORT: 2 SB Cruz

DATE: 5-11-96  
 SHOW: Smoky Mountain RB  
 JUDGE: C Lynch  
 DUTCH: 17  
 BOB: Br/Gray JB NM  
 BOS: Tort JD NM  
 BLACK: 9 SB NM  
 BLUE: 4 JB Hinkle  
 BR/GRAY: 1 JB NM  
 TORT: 3 JD NM

DATE: 5-11-96  
 SHOW: Tulsa RBA  
 WHERE: Tulsa, OK  
 JUDGE: O Reynolds  
 DUTCH: 3  
 ALL WINNERS NM

DATE: 5-11-96  
 SHOW: Western Michigan RBA  
 WHERE: Greenville, MI  
 JUDGE: P Jones  
 DUTCH: 16  
 BOB: Blue JD Smith  
 BOS: Br/Gray JB Smith  
 BLACK: 5 SB Smith  
 BLUE: 8 JD Smith  
 CHOC: 1 JB NM  
 BR/GRAY: 2 JB Smith

DATE: 5-11-96  
 SHOW: Waterloo Area RBA  
 WHERE: Waterloo, IA  
 JUDGE: L Bengtson  
 DUTCH: 55  
 BOB: Choc SD NM  
 BOS: Blk SB Woods  
 BLACK: 15 SD Woods  
 BLUE: 9 SD Jones  
 CHOC: 6 SD NM  
 TORT: 8 JD Woods  
 STEEL: 9 SD McCune  
 BR/GRAY: 8 SD Woods

DATE: 5/17-5/19/96  
 SHOW: Ohio State RBA  
 WHERE: Columbus, OH  
 JUDGE: G Raisor  
 DUTCH: 47  
 BOB: Choc SD Reynolds  
 BOS: Tort SB Hirsch  
 BLACK: 12 JD Hessick  
 BLUE: 9 SB Ruggiero  
 BR/GRAY: 4 SD Woods  
 CHOC: 10 SD Reynolds  
 STEEL: 5 SB Woods  
 TORT: 7 SB Hirsch

DATE: 5-18-96  
 SHOW: Suburban Twins RC  
 WHERE: Farmington, MN  
 JUDGE: G Gillispie  
 DUTCH: 40  
 \*\*\* Cont'd next page \*\*\*

## YOUTH SHOW REPORTS

BOB: Steel SB Eaton  
 BOS: Blk SD Wenger  
 BLACK: 11 SB Wenger  
 BLUE: 10 SB Wayne  
 BR/GRAY: 1 SD NM  
 CHOC: 7 SD NM  
 STEEL: 5 SB Eaton  
 TORT: 6 SB Eaton

DATE: 5-18-96  
 SHOW: Stanislaus Co Youth  
 WHERE: Crowslanding, CA  
 JUDGE: F Cremer  
 DUTCH: 13  
 BOB: Blk SB B&T Lugo  
 BOS: Blk JD B&T Lugo  
 BLACK: 6 SB B&T Lugo  
 BLUE: 3 SD NM  
 CHOC: 1 SD NM  
 TORT: 1 JB NM  
 STEEL: 1 SB B&T Lugo  
 BR/GRAY: 1 JB NM

DATE: 5-18-96  
 SHOW: High Time RC  
 WHERE: Cheyenne, WY  
 JUDGE: R Krause  
 DUTCH: 25  
 BOB: Tort JB Metcalf  
 BOS: Blk SB NM  
 BLACK: 10 SD Metcalf  
 BLUE: 4 JD NM  
 CHOC: 3 SB NM  
 TORT: 7 SB Metcalf  
 STEEL: 1 JB NM

DATE: 5-18-96  
 SHOW: Suburban Twins RC  
 WHERE: Farmington, MN  
 JUDGE: R Steinberg  
 DUTCH: 41  
 BOB: Blk SD Wenger  
 BOS: Blk SB Wayne  
 BLACK: 11 SD Wenger  
 BLUE: 10 JD Wenger  
 CHOC: 8 SB Wenger  
 STEEL: 5 SB Eaton  
 TORT: 6 SD Eaton  
 BR/GRAY: 1 SD NM

DATE: 5-18-96  
 SHOW: Rabbit Fest  
 WHERE: Copperas Cove, TX  
 JUDGE: F Farrow  
 DUTCH: 67  
 BOB: Blk SB Lewis  
 BOS: Choc JD Sparks  
 BLACK: 19 SB Lewis  
 BLUE: 10 SB Sparks  
 CHOC: 10 SB Sparks  
 TORT: 10 JB Crow  
 STEEL: 11 SD Crow  
 BR/GRAY: 7 SD Sparks

DATE: 5-18-96  
 SHOW: Central CT R&CBA  
 WHERE: North Haven, CT  
 JUDGE: R Cota  
 DUTCH: 25  
 BOB: Blk SB Gittleman  
 BOS: Blk SD Cruz

BLACK: 6 SB Gittleman  
 BLUE: 3 SD Green  
 CHOC: 4 SB Gittleman  
 TORT: 7 SB Cruz  
 STEEL: 1 SB Cruz  
 BR/GRAY: 4 SB Gittleman

DATE: 5-18-96  
 SHOW: Saginaw Valley R&CBA  
 WHERE: Saginaw, MI  
 JUDGE: L Trausch  
 DUTCH: 58  
 BOB: Blk SB Smith  
 BOS: Blue JD Smith  
 BLACK: 22 SB Smith  
 BLUE: 16 SB Smith  
 CHOC: 10 JB Regelin  
 BR/GRAY: 6 JB Smith  
 TORT: 4 SD Regelin

DATE: 5-19-96  
 SHOW: Livingston Co RB  
 WHERE: Pontiac, IL  
 JUDGE: R Gehr  
 DUTCH: 10  
 ALL WINNERS NM

DATE: 5-19-96  
 SHOW: SW Wisconsin RC  
 WHERE: Mineral Point, WI  
 JUDGE: R Mauck  
 DUTCH: 31  
 BOB: Choc SB Field  
 BOS: Blue SD NM  
 BLACK: 13 SB Worzella  
 BLUE: 11 SD NM  
 CHOC: 3 SB Field  
 BR/GRAY: 1 JB A/Aisbet  
 TORT: 3 SB J/Aisbet

DATE: 5-19-96  
 SHOW: Napa Spring Fair  
 WHERE: Napa, CA  
 JUDGE: J Coleman  
 DUTCH: 13  
 BOB: Br/Gray SB Dowdy  
 BOS: Blk JD NM  
 BLACK: 4 JD NM  
 BLUE: 1 JB NM  
 BR/GRAY: 3 SB Dowdy  
 STEEL: 3 SB Baldwin  
 TORT: 2 SD NM

DATE: 5-25-96  
 SHOW: Hare Raisers Youth 4-H  
 WHERE: West Friendship, MD  
 JUDGE: R Frizzel  
 DUTCH: 15  
 ALL WINNERS NM

DATE: 5-25-96  
 SHOW: Huntington Co Exhibition  
 WHERE: Huntington, IN  
 JUDGE: G Raiser  
 DUTCH: 67  
 BOB: Blk JD Hurst  
 BOS: Blk SB Lape  
 BLACK: 22 JD Hurst  
 BLUE: 16 JD Hurst  
 CHOC: 13 JB Regelin  
 BR/GRAY: 2 SB McKinney

STEEL: 3 SB Kilander  
 TORT: 11 JD Hurst  
 DATE: 5-25-96  
 SHOW: Huntington Co Exhibition  
 WHERE: Huntington, IN  
 JUDGE: G Grimm  
 DUTCH: 65  
 BOB: Blk SB Lape  
 BOS: Blk SD Slack  
 BLACK: 21 SB Lape  
 BLUE: 15 SD Lape  
 CHOC: 13 JB Regelin  
 BR/GRAY: 2 SB McKinney  
 STEEL: 3 SB Woods  
 TORT: 11 SB Hurst

DATE: 5-25-96  
 SHOW: Great River RC  
 WHERE: St Croix Falls, WI  
 JUDGE: M Kroening  
 DUTCH: 28  
 BOB: Blk SD Wayne  
 BOS: Steel SB Eaton  
 BLACK: 6 SD Wayne  
 BLUE: 10 SD Graveen  
 CHOC: 4 JD Graveen  
 STEEL: 3 SB Eaton  
 TORT: 5 SB Eaton

DATE: 5-25-96  
 SHOW: Huron Co RB  
 WHERE: Norwalk, OH  
 JUDGE: R Allebach  
 DUTCH: 26  
 BOB: Blk SD Smith  
 BOS: Blk SB Smith  
 BLACK: 11 SD Smith  
 BLUE: 10 JB NM  
 CHOC: 2 SD Reynolds  
 TORT: 1 JD Pummill  
 STEEL: 1 SB Reynolds  
 BR/GRAY: 1 JB Smith

DATE: 5-25-96  
 SHOW: Indianhead RB  
 WHERE: St Croix Falls, WI  
 JUDGE: S Zaruba  
 DUTCH: 51  
 BOB: Blk SB Worzella  
 BOS: Blk SD Wenger  
 BLACK: 13 SB Worzella  
 BLUE: 16 SB Worzella  
 CHOC: 9 SB Wenger  
 BR/GRAY: 1 SD Worzella  
 STEEL: 5 SB Eaton  
 TORT: 7 SB Eaton

DATE: 5-26-96  
 SHOW: Georgetown Area RBA  
 WHERE: Melvin, IL  
 NO DUTCH SHOWN

DATE: 5-26-96  
 SHOW: Huntington Co Exhibition  
 WHERE: Huntington, IN  
 JUDGE: K Cunningham  
 DUTCH: 36  
 BOB: Blue JD Slack  
 BOS: Blk JB Lape  
 BLACK: 15 JB Lape

BLUE: 10 JD Slack  
 CHOC: 7 SB McKinney  
 BR/GRAY: 2 SB McKinney  
 TORT: 2 SB Regelin

DATE: 5-26-96  
 SHOW: Huntington Co Exhibition  
 WHERE: Huntington, IN  
 JUDGE: B Dumas  
 DUTCH: 38  
 BOB: Blue JD Slack  
 BOS: Blk JB Lape  
 BLACK: 16 JB Lape  
 BLUE: 11 JD Slack  
 CHOC: 7 JB Regelin  
 BR/GRAY: 2 JB Regelin  
 TORT: 2 SB Regelin

DATE: 5-26-96  
 SHOW: Huron Co RB  
 WHERE: Norwalk, OH  
 JUDGE: B Swartz  
 DUTCH: 32  
 BOB: Blue JD Smith  
 BOS: Blk SB Smith  
 BLACK: 11 SD Smith  
 BLUE: 13 JD Smith  
 CHOC: 2 SD Reynolds  
 TORT: 1 JD Pummill  
 STEEL: 3 SB NM  
 BR/GRAY: 2 SB Hessick

DATE: 5-26-96  
 SHOW: St Croix Valley RBA  
 WHERE: St Croix Falls, WI  
 JUDGE: B Rice  
 DUTCH: 49  
 BOB: Blue SD Graveen  
 BOS: Blk SB Worzella  
 BLACK: 12 SB Worzella  
 BLUE: 16 SD Graveen  
 CHOC: 9 SB Graveen  
 BR/GRAY: 1 SD Worzella  
 STEEL: 4 SB Eaton  
 TORT: 7 JD Wenger

DATE: 5-26-96  
 SHOW: St Croix Valley RBA  
 WHERE: St Croix Falls, WI  
 JUDGE: R Goedderz  
 DUTCH: 40  
 BOB: Blk SB Worzella  
 BOS: Choc JD Graveen  
 BLACK: 9 SB Worzella  
 BLUE: 12 SD Graveen  
 CHOC: 9 SB Graveen  
 BR/GRAY: 1 SD Worzella  
 STEEL: 4 SB Eaton  
 TORT: 5 SB Eaton

DATE: 5-31-96  
 SHOW: Richland Co RBA  
 WHERE: Mansfield, OH  
 JUDGE: H Keller  
 DUTCH: 19  
 BOB: Blk SB Woods  
 BOS: Blue SD NM  
 BLACK: 7 SB Woods  
 BLUE: 4 JB NM  
 CHOC: 2 SD Reynolds  
 \*\*\* Cont'd next page \*\*\*



## YOUTH SHOW REPORTS

TORT: 2 JD Woods  
 STEEL: 2 SB Reynolds  
 BR/GRAY: 2 SD Woods

DATE: 6-1-96  
 SHOW: NW Dutch RC  
 WHERE: Olympia, WA  
 JUDGE: R Powell  
 DUTCH: 37  
 BOB: Tort SD Widrig  
 BOS: Blk JB NM  
 BLACK: 10 JD NM  
 BLUE: 7 JB Grega  
 CHOC: 7 JB NM  
 TORT: 9 SD Widrig  
 STEEL: 2 SB NM  
 BR/GRAY: 2 SD E/Cason

DATE: 6-1-96  
 SHOW: Funky Bunnies Youth Club  
 WHERE: Red Lodge, MT  
 JUDGE: B Price  
 DUTCH: 7  
 BOB: Blue JB Heller  
 BOS: None  
 BLACK: 2 JB NM  
 BLUE: 3 JB Heller  
 CHOC: 1 SB NM  
 TORT: 1 JB NM

DATE: 6-2-96  
 SHOW: Iroquois RBA  
 WHERE: Crescent City, IL  
 JUDGE: W Grebner  
 DUTCH: 14  
 ALL WINNERS NM

DATE: 6-1-96  
 SHOW: Lorain Co RCBA  
 WHERE: Wellington, OH  
 JUDGE: J Soper  
 DUTCH: 60  
 BOB: Blk SB Hessick  
 BOS: Blue JD Lape  
 BLACK: 23 SB Hessick  
 BLUE: 15 JD Lape  
 CHOC: 10 SD Reynolds  
 BR/GRAY: 2 JB Regelin  
 STEEL: 5 SB Reynolds  
 TORT: 5 JB Ruggiero

DATE: 6-2-96  
 SHOW: Up & Going RC  
 WHERE: Peru, IA  
 JUDGE: D Jackson  
 DUTCH: 17  
 BOB: Blk JD NM  
 BOS: Blk JB NM  
 BLACK: 8 JD NM  
 BLUE: 6 SD NM  
 CHOC: 1 SB Wagoner  
 TORT: 2 JD NM

DATE: 6-1-96  
 SHOW: Mid-Missouri Youth & 4-H  
 WHERE: Linn, MO  
 JUDGE: D Hauser  
 DUTCH: 18  
 BOB: Blk SB NM  
 BOS: Br/Gray JD Redden  
 BLACK: 9 SB NM  
 BLUE: 5 SB Powell  
 CHOC: 1 JB Powell  
 STEEL: 1 JB Redden  
 BR/GRAY: 2 JD Redden

DATE: 6-2-96  
 SHOW: Upper Midwest Dutch RC  
 WHERE: Stockton, MN  
 JUDGE: N Nelson  
 DUTCH: 54  
 BOB: Blue JD Wenger  
 BOS: Blue SB Worzella  
 BLACK: 21 SD Wenger  
 BLUE: 11 JD Wenger  
 CHOC: 1 SB Wenger  
 TORT: 2 JB D&D Luedtke  
 STEEL: 13 SD McCune  
 BR/GRAY: 6 JD McCune

DATE: 6-8-96  
 SHOW: High Desert Hoppers  
 WHERE: Carson City, NV  
 JUDGE: S Byrom  
 DUTCH: 35  
 BOB: Blk SB Klopfer  
 BOS: Br/Gray JD Bennett  
 BLACK: 11 SB Klopfer  
 BLUE: 10 JB Lewis  
 BR/GRAY: 6 JD Bennett  
 CHOC: 3 SD NM  
 STEEL: 3 SB Bennett  
 TORT: 2 SB Bennett

DATE: 6-8-96  
 SHOW: High Desert RBA  
 WHERE: Victorville, CA  
 JUDGE: I Horowitz  
 DUTCH: 25  
 BOB: Blk SB B&T Lugo  
 BOS: Blk JD Keegan  
 BLACK: 12 SB B&T Lugo  
 BLUE: 6 JB Keegan  
 STEEL: 1 SB B&T Lugo  
 BR/GRAY: 6 JD N/Allen

DATE: 6-8-96  
 SHOW: Broome Co RB  
 WHERE: Ithaca, NY  
 JUDGE: B Burdick  
 DUTCH: 18  
 BOB: Br/Gray SB Gittleman  
 BOS: Blk SD Cruz  
 BLACK: 7 SB Gittleman  
 BLUE: 3 JB Gittleman  
 CHOC: 3 SB Hamilton  
 TORT: 1 SB Cruz  
 STEEL: 1 SB Cruz  
 BR/GRAY: 3 SB Gittleman

DATE: 6-9-96  
 SHOW: Van Wert Co RBA  
 WHERE: Celina, OH  
 JUDGE: K Cunningham  
 DUTCH: 35  
 BOB: Blk JB Lape  
 BOS: Blue JD Smith  
 BLACK: 12 JB Lape  
 BLUE: 11 JD Smith  
 CHOC: 8 SB NM  
 BR/GRAY: 1 JB Smith  
 STEEL: 2 SB NM  
 TORT: 1 JD NM

DATE: 6-15-96  
 SHOW: Carrot Crunchers 4-H  
 WHERE: E Middleboro, MA  
 JUDGE: Unknown  
 DUTCH: 16  
 BOB: Blk SD NM  
 BOS: Blk SB NM  
 BLACK: 12 SB NM  
 BLUE: 1 JB Ardison  
 CHOC: 1 JB NM  
 TORT: 2 SD NM

## OPEN SPECIAL WINNERS

3-2-96  
 3-31-96  
 4-14-96  
 4-20-96  
 4-21-96  
 5-5-96  
 5-11-96  
 5-25-96  
 5-25-96  
 5-26-96

Best In Show  
 Best In Show  
 Best In Show  
 Best 4 Class  
 Best In Show  
 Best In Show  
 Best 4 Class  
 Best 4 Class  
 Best In Show  
 Best In Show

NW Georgia C&RC #2  
 Springfield R&CBA  
 Springfield RBC  
 Jackson Purchase RBC  
 Whitewater Valley RBA  
 Stark Co R&CBA  
 Springfield RB  
 Applegate Trail R&CB  
 Huntington Co Exhibition  
 Huntington Co Exhibition

Ricky Wood  
 Kevin Hooper  
 D & T Kikkert  
 Sheena Davison  
 D & T Kikkert  
 John Imes  
 Jack Gilmore  
 Chris Richardson  
 D & D Schwartz  
 D & D Schwartz

## YOUTH SPECIAL WINNERS

4-6-96  
 4-14-96  
 5-18-96  
 6-1-96

Best In Show  
 Best In Show  
 Best In Show  
 Best In Show

Pikes Peak RBA  
 Mississippi Valley RBA  
 Stanislaus Co Youth Rabbits  
 NW Dutch RC

Ben Metcalf  
 Tad Chapman  
 B & T Lugo  
 Bradlee Widrig

**NATIONAL DUTCH SHOW  
Showroom -- Greenville, Ohio  
1996 and also site for 1997 NDS.**



ADRC Show Sanction: Date of Show \_\_\_\_\_ Open ARBA Code# \_\_\_\_\_ Youth ARBA Code # \_\_\_\_\_

Sponsoring Club \_\_\_\_\_ Show location \_\_\_\_\_ Secretary Name \_\_\_\_\_ Ph# \_\_\_\_\_

Address \_\_\_\_\_ City \_\_\_\_\_ State \_\_\_\_\_ Zip \_\_\_\_\_ Sanction Fees: Open \$9 Youth \$6. *Apply at least 60 days in advance.* Send to Doreen Bengtson, Sect. Rt 1 Box 95 Lewiston, MN 55952-9720.

**MEMBERSHIP APPLICATION  
AMERICAN DUTCH RABBIT CLUB**

**Send to:** Doreen Bengtson, Sect.  
Route 1 Box 95  
Lewiston, MN 55952  
(507)864-2103



**YEARLY DUES**

- Youth \$8.00     Single \$10.00     Husband/Wife \$15.00  
**these membership fees include a \$3.00 voluntary surcharge per person**

Date \_\_\_\_\_ 19\_\_\_\_

I hereby make application for membership in the **AMERICAN DUTCH RABBIT CLUB**. I agree to abide by your Constitution and By-Laws and to further the interest of the AMERICAN DUTCH RABBIT in every way possible.

Print Name \_\_\_\_\_

Rabbitry Name \_\_\_\_\_

Street Address \_\_\_\_\_

City \_\_\_\_\_ State \_\_\_\_\_ Zip \_\_\_\_\_ Phone ( ) \_\_\_\_\_

Renewal     New    Recommended by \_\_\_\_\_

**Canadian memberships** must add an additional \$5 to cover mailing expenses. **Foreign memberships** must add an additional \$8 to cover mailing expenses. All fees must be in U.S. funds. If you want your Dutch Reporter send to you 1st class, please add \$7.

## BENGTSON'S DUTCH

Larry, Doreen, Erik & Paul



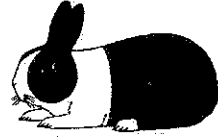
3/97

Larry: ARBA Judge  
Doreen: ADRC Sect  
Erik: ARBA Judge



Route 1 Box 95  
Lewiston, MN 55952  
(507)864-2103

## BLYTHER'S DUTCH



Steve, Judy  
Kristina & Michelle

ALL COLORS FOR SALE

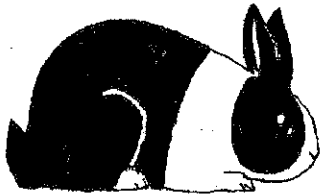
R.R. 1 Box 25A (605)624-2564  
Burbank, South Dakota 57010

9/97

## Dutch Haven Rabbitry.

"We strive for Excellence"

Sue & Emily Strandwitz  
Neenah, Wisconsin  
(414)729-9577



\*Dutch in\*

Black Blue  
Chocolate Tortoise

12/97

## W enton C arlton

14150 N Hawkeye Drive  
Tucson, Arizona 85741



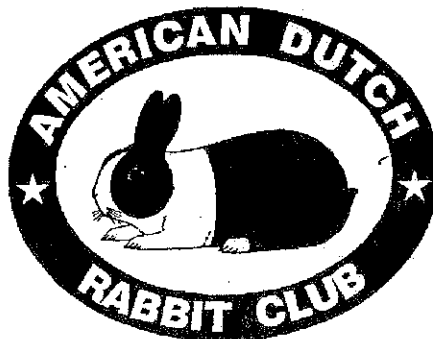
9/97

ONLY TWO LEFT!

\$60 FOR TWO YEARS

THE DUTCH REPORTER  
Julia Anderson, Editor  
301 East Conant Street  
Portage, Wisconsin 53901

BULK RATE  
U.S. Postage  
PAID  
PERMIT # 211  
Winona, MN



CHECK YOUR LABEL FOR  
MEMBERSHIP EXPIRATION  
DATE AND RENEW PROMPTLY.



SEND TO:

Empty rectangular box for address information.



DATED MATERIAL