

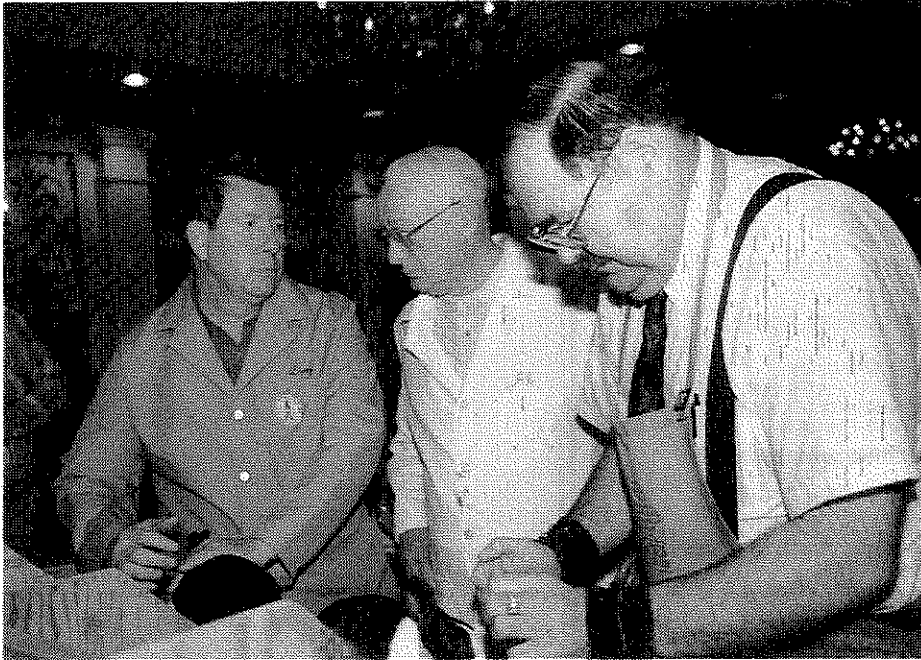
APRIL

MAY

1994

JUNE

*THE
DUTCH
REPORTER*



OPEN JUDGES

1994 NATIONAL DUTCH SHOW

Larry Bengtson - Al Butler - Dr. T.E. Reed



DEVOTED TO THE INTERESTS OF THE DUTCH BREED
AMERICA'S FINEST RABBIT

EICH'S RABBITRY

Top Quality Dutch
FOR SALE

National Winners for over 43 years
Black - Blue - Chocolate - Tortoise

WE WILL SHIP

Roger and Bonnie Eich
Box 502 Dallas Center, Iowa
(515) 992-3466 50063



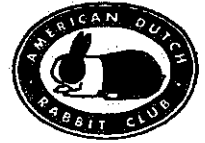
3/95

DUTCH HUTCH RABBITRY



GRAND CHAMPION BLOODLINES

Blacks and Blues



Rick Lehmann

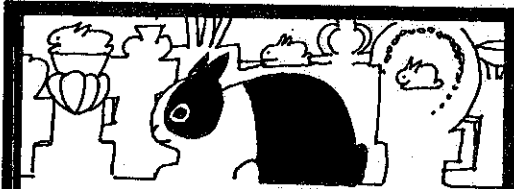
11925 Stearns

Overland Park, KS 66213-1963

Phone: 913-681-9486

3/95

NDS PLEASANTON CA '93



JOANNE PURPUS & JILL DOBSON
QUALITY SHOW AND BREED DUTCH
IN: BLACK, BLUE, GRAY, TORTOISE, STEEL

JOANNE PURPUS
579 LA COSTA AVE
LEUCADIA CA 92024
619-942-5018

JILL DOBSON
1560 VIA PALOMA
ESCONDIDO CA 92026
619-739-1747

JILL DOBSON : 1ST BLUE JR B BEST BLUE JR
1ST TORT JR B BOSV TORT

JOANNE PURPUS : 1ST PL ALL STEELS
BOV & BOSV STEEL BEST DISPLAY STEELS

JOANNE PURPUS : 1ST GRAY SB 1ST GRAY SR D
BEST SR GRAY BOSV GRAY BEST GRAY FUR
BEST DISPLAY GRAYS

PRESIDENT
 Fred Mullinax (96)
 105-A Easy View Dr.
 Lincolnton, NC 28092
 (704) 732-1554

VICE-PRESIDENT
 Wayne MacKinnon (94)
 146 Field St.
 Taunton, MA 02780
 (508) 823-7953

SECRETARY-TREASURER
 Norma Hart (95)
 190 N. First Ave.
 Coal City, IL 60416
 (815) 634-2676

DIRECTORS DISTRICT 1

STATES INCLUDED IN DISTRICT: CT, DE, FL, GA, ME, MD, MA, NH, NJ, NY, NC, OH, PA, RI, SC, VT, VA, WV

Jack Pugh (94)
 4862 Ilchester Rd.
 Ellicott City, MD 21043

Kevin Hooper (95)
 585 Cherrybend Rd.
 Wilmington, OH 45177
 (513) 584-4669

Ken Emerson
 4670 Lakeville Rd.
 Geneseo, NY 14454
 (716) 243-5327

V
O
L
U
M
E

DIRECTORS DISTRICT 2

STATES INCLUDED IN DISTRICT: AL, AR, IL, IN, IA, KY, LA, MI, MN, MS, MO, TN, WI

Richard Gehr (94)
 190 N. First Ave.
 Coal City, IL 60416
 (815) 634-2676

PENDING APPOINTMENT (95)

Floyd Dopler (96)
 Box 511
 Andalusia, IL 61232
 (309) 798-5367

52
N
O

DIRECTORS DISTRICT 3

STATES INCLUDED IN DISTRICT: AK, AZ, CA, CO, HI, ID, KS, MT, NE, NV, NM, ND, OK, OR, SD, TX, UT, WA, WY

George Farmer (94)
 9990 SW Marjorie Lane
 Beaverton, OR 97005
 (503) 644-4870

Charles Christ (95)
 7221 N. 25th Lane
 Phoenix, AZ 85051
 (602) 864-6085

Fran Schettler (96)
 305 Romae Ct.
 Danville, CA 94526
 (415) 838-8036

2

**SWEEPSTAKES
 OPEN & YOUTH**
 Jeffrey Andrews
 325 Hamilton St.
 Albion, NY 14411
 (716) 589-4857

PUBLICITY DEPARTMENT
 Al & Barb Butler
 4310 Richville Dr. SW
 Canton, OH 44706
 (216) 484-1977



DUTCH REPORTER EDITOR
 Richard Gehr
 190 N. First Ave.
 Coal City, IL 60416
 (815) 634-2676



The Dutch Reporter is published 4 times yearly. Material for publication and ads must reach the EDITOR by the 1st of March, June, September, and December in order to appear in that issue.

ADVERTISING RATES

Full Page
 Half Page
 Third Page
 Fourth Page
 Yearly Breeder Card
 Judge and Registrar Listing
 Booster Listing
 "FOR SALE" Listing

SINGLE ISSUE

\$30.00
 \$20.00
 \$16.00
 \$12.00

 \$10.00

YEARLY

\$120.00
 \$80.00
 \$65.00
 \$48.00
 \$18.00
 \$12.00
 \$12.00

PRESIDENT'S REPORT

Fred Mullinax

Hi Dutch Fans,

The National Dutch Show in Reading, PA was a blast! It may not have been one of the biggest Dutch shows, but it sure had some outstanding Dutch. Two of the finest breeders of Dutch from Indiana took B.O.B. and B.O.S.; Lynn Shaw winning B.O.B. with a beautiful Black Jr. Doe and Al Miller winning B.O.S. with an outstanding Steel Buck. It seems like I just wrote something like this about one year ago from the Midwest Classic. These men are something when it comes to breeding and showing Dutch. Congratulations to both and to all winners. They will be listed some other place in the Dutch Reporter.

We as a club need to be thinking about people we want to be in the Dutch Hall of Fame. I know that we have a lot of men and women that have contributed a lot to Dutch rabbits, so let's get all of the names and keep them in a safe place until the voting comes out.

I think that any club holding any National Dutch Show should have good caging so that bucks can't bite other bucks. I know it's a big job just putting on the National Dutch Show, and sometimes you just don't have a lot to work with. This is just my opinion.

Here in the South we held the Carolina's Dutch Show in Maggie Valley, NC This is the first time in four years that we have had over 100 Dutch. There were some outstanding Dutch with a lot of different winners. A Gray Sr. Doe won B.O.B. and a Black Sr. Buck won B.O.S. The Youth show had 27 Dutch. A Black Sr. Buck won B.O.B. and went on to win Best In Show. This is probably the sixth or seventh time that a Youth Dutch has won Best In Show.

Shows here in the South have come to a halt with the heat here. Most rabbits just can't stand it. We have already been getting 90 or better temperatures so you can see why the shows are over.

Hope to see all of you at some show or some other place.

DISTRICT I

Ken Emerson

Hi everyone!

Let me introduce myself as a new Director. I live in upstate New York and have been raising Dutch since 1987. My first rabbit was shown in November of 1987 and finished a dismal seventh. Since then I've gotten hooked and enjoy attending shows. I try to attend the National Dutch Shows as well as the ARBA Conventions. I have also been raising Californians, and at the last convention in Puyallup I was lucky enough to have Best Opposite of Breed.

Let me try to explain why I wanted to be a Director. After raising Dutch for some years, I finally felt that I might be qualified to hold the position. I was hoping that some new blood might stimulate the tried but true Board members, and I also hoped I could contribute new ideas as well as maybe presenting a different view. I would welcome ideas, helpful hints, and constructive criticism from all; also any articles or ideas for the Dutch Reporter.

Local Dutch turnout at shows this spring has been low, at best. Two key breeders in the area are sorely missed; one has changed jobs and hasn't been able to show, and another is busy helping a Youth breeder get started. Shows in general are up in the number of breeders, but down an average of 200 - 300 animals. The harsh upstate winter has taken its toll, and juniors are few and far between.

I won't go into the National Dutch Show at Reading since I'm sure everyone else will - however, a good time was had by all. I will say that whenever a National is anywhere close to you, you should try to attend even if you do not have any animals to show.

There did seem to be some confusion on some issues that were to be voted on in the Dutch Reporter. First, I will try to keep you informed on issues as they come up. Secondly, I suggest you read the minutes of both the general and Board meetings when they are printed in the D.R. to see what the issues are.

DISTRICT II

Floyd Dopler

As I am writing this article, it is Memorial Day. I mention this fact to remind everyone how much lead in time you need when sending show information in to Dick to advertise your show. You really need to take note of when the deadlines are, and realize when your information will be published, mailed, and into the hands of the membership. I also would like to mention that when I took the time to run an ad for the Illinois Dutch Rabbit Club specialty show one year I received a phone call from a person who, at the time, only belonged to the American Dutch Rabbit Club. He was not a member of ANY other organization and this was his only way of knowing of a specialty show going on. He really wanted to show his dutch. He has since gone on to show many more dutch with his son and has helped the Illinois Dutch club many times since. Gaining him as a member was worth all the effort it takes to put on a specialty show. He is a good friend of mine, John Rudolph of Island Lake Illinois.

As a director, I was ambushed at a show I attended with questions concerning the DUTCH REPORTER. It is listed in the DR the amount of money paid to M&D printing for producing our bulletin AND mailing it. I have been asked what is costs PER PAGE to print and the number of copies we average per mailing. I am confident editor Dick Gehr can give a better answer on this one than I could.

My sincere congratulations goes to the Indiana dutch breeders for their fantastic wins at the National Show. Best of Breed & Best Opposite Sex in the open AND the youth came from the Indiana breeders. These are truly sensational wins considering the national was not located in their immediate vicinity. In 1993 I was the Indiana State Show secretary and although this is a six hour trip from my home, it was certainly worth the effort as I had the opportunity to meet some of the really great breeders in the state. They impressed me with their organized way of making sure every rabbit made it to the table whether or not the owner was present, which is something I worried about since I was busy doing other things.

Dopler con't..

Dutch breeder Kelly Cummings was show superintendent, who was a REALLY busy person.

I have joined an on line computer service called America on Line. I mention this as information, not as an advertisement. Many directors in other specialty clubs belong to this service as do other rabbit breeders. It is very easy to send and receive electronic mail this way and you become more inclined to respond to a letter if you do not have to make out an envelope for it or wait days or weeks for an answer. Sometimes I get my answers in a matter of hours. If any dutch breeder is currently a member, feel free to drop me a line. Send your message to: FDopler. If anyone would like details on this service, write or call me. I am the ultimate elcheapo who likes to keep up on new and modern conveniences, so I waited and watched awhile before I logged on this system. All computers being sold new now seem to come with a modem already in them, so all you need to do is attach your phone cord. The softwear they provide you with is free and it configures your system by itself. It is quite easy to do.

I sent our club president a personal letter to inform him that I would not be attending the National Dutch Show and subsequent meeting. It is doubtful that I will be able to go to Tulsa for the convention either. Ironically, I should have no problems in making it to the national next year or to the convention in Louisville. I am working at staying in touch with our other directors and officers.

Best Wishes until the fall months.....

DISCLAIMER

ARTICLES, STATEMENTS, AND OPINIONS PRINTED OR EXPRESSED IN THE DUTCH REPORTER MAY NOT BE THOSE OF THE AMERICAN DUTCH RABBIT CLUB OR THE EDITOR AND ARE SOLELY THE RESPONSIBILITY OF THE AUTHORS

DISTRICT II

Kevin Hooper

I would first like to congratulate all of the Indiana breeders who took home the honors at this year's National Dutch Show. Those were some nice Dutch raised by some quality breeders. Congratulations!

The show season is coming to an end here in the Midwest. We recently held our Ohio State Dutch Show in Wellington. The Youth show had 41 Dutch with the honors being taken by Amy's Trail Rabbitry from Michigan with a Black Jr. Doe and a Tort Sr. Buck of Amy's was Best Opposite. In the Open show, I was fortunate to have Best of Breed with a Tort Jr. Buck and Best Opposite with a Steel Jr. Doe. Bill Patrick was our judge.

The Lorain Co. show that evening was judged by Doc Reed. The same Tort Jr. Buck of mine was B.O.B. and a Black Sr. Doe of Sue Peters was B.O.S. The Tort Buck went on to take Best 4 Class, and up against a Californian for Best In Show. After much discussion between the three judges, the Californian, owned by Dutch breeder (and Californian breeder) Ken Emerson, was picked for B.I.S. This was the sixth Best In Show won by this Doe. Congratulations, Ken!

The Sunday show at Wellington, judged by Joe Frizzell, was won by my Steel Jr. Doe with Ken Emerson taking B.O.S. with a Black Sr. Buck.

The first annual unofficial Ohio State Dutch Golf Outing held on Saturday was won by Ken Emerson, with Dan Nixon a close second, and myself and Rick Billups many strokes back.

Please find elsewhere in this issue the minutes of the Board of Directors meeting held at the N.D.S. Some items which we were concerned with: National Dutch Show Rules and Requirements, ballots cast for the Standards revisions, publicity club inventory, and Seller's Class participation at the N.D.S. and ARBA Convention.

I received a copy of a letter from a breeder recently following the N.D.S. concerning the balloting for the Standards revisions. I would like to make a couple of comments on this.

Hooper, con't.

We received 23 ballots on the Standards as was mentioned in the last DR. There was discussion on why we had this low turn out of votes. There were many reasons this could have happened and these were discussed at the N.D.S. This letter said that she was sure that the Board of Directors made up the bulk of these votes and that we had the vote go the way we (the Board) wanted. WRONG! Out of the 23 ballots, only three were cast by Officers of the Club! I myself did not vote as I was reserving my vote in the case we had a tie. I also would not have voted for every proposed clarification that was presented.

I hope all of you are making plans now to attend the ARBA Convention in Tulsa this fall. It was a great facility in 1989 and promises to be better this year.



Sara Sigurdson with her B.O.B. and B.O.S. at the Wind River RBA show in Riverton, WY.

"Carmel" and "Fudge" were 67 days old.

DISTRICT II and EDITOR'S REPORT

Dick Gehr

The National Dutch Show is now history, and is one we should remember for quite some time. The facilities were excellent, and the Easterners did a great job of accomodating all in attendance. Congratulations to the winners, and everyone that exhibited. You don't have to place first to be a winner. Just having an animal to compete with in this kind of competition is an accomplishment.

This DR has been delayed for a couple of reasons. I was asked to wait on materials pertinent to the Tulsa Convention, and I lost a couple of days during the middle of the month due to the loss of a good friend. I am sure everyone is aware of the passing of Dr. T.E. Reed. Doc was a good friend, a staunch supporter of the Dutch rabbit and ADRC, and a person willing to give of himself and his knowledge to anyone in need. He will be greatly missed.

To comment on Floyd Dopler's "ambush" concerning the Dutch Reporter, I find it odd that people are quick to comment, question, criticize, etc. to everyone except the person directly involved. If someone has questions about the Dutch Reporter cost, I would think they would approach me, as Editor, or Norma, as the person paying the bills.

A couple of years ago there were price quotes obtained for the printing of the DR. The least expensive was from M&D Printing in Henry, Illinois. If someone else would like to present a proposal to have the Dutch Reporter printed, that is perfectly fine. Just take a copy to whomever you wish and ask them to give you a quote on printing 700 - 800 issues four times per year. Submit the proposal to the ADRC Board, and it will be considered. Believe me, if someone else would like to act as Editor of the DR, you are more than welcome to do so. I have been doing this for quite some time, in an effort to help the club. I receive no payment for putting this magazine together. There are many things I could do with the time spent, and when I do the DR it has to be when time permits. That is the reason it is sometimes a little late.

Gehr, con't.

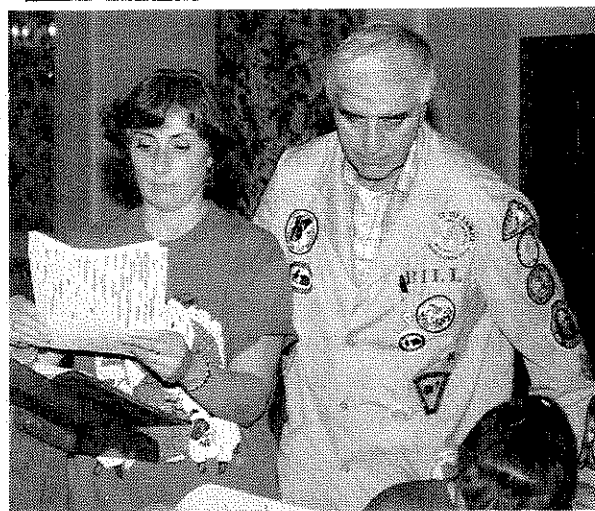
The cost of the DR cannot be given in an exact dollar amount per page. It depends on the number of copies and pages, pictures included, any reducing or enlarging, etc. The cost averages about \$800.00 - \$900.00 per issue, and this is for the cost of printing and mailing. (No Editor's fees are included) Normally they print about 750 copies, averaging about 50 - 55 pages per issue. This is quite an expense for the club.

I would welcome any volunteer to take over the job as Dutch Reporter Editor. Just contact myself or President Fred Mullinax.

There is a need for some Constitutional changes. I have been working on several and will be presenting them for signatures at Tulsa. I will also be printing our Constitution and By-Laws as they presently read in the next issue of the DR. That way anyone desiring changes or alterations will have the opportunity to work something up.

The proposed clarifications or alterations to our Dutch standard were rejected by the ADRC Standards Committee. I do not know what Kevin has done in regards to this situation. I haven't heard anything from him.

That's about it for this time. Hope to see you all somewhere in my travels.



*Bill and Diane Geitzenauer
Hard at work at the NDS*

ADRC BOARD OF DIRECTOR'S MEETING

NDS - READING, PA

The Board of Directors Meeting of the ADRC was called to order by President Mullinax at 7:15 PM at the Inn at Reading, PA.

Those officers in attendance were President Mullinax, Vice-President MacKinnon, Directors Emerson, Hooper, Reed and Gehr, and Secretary-Treasurer Hart. Absent were Directors-Pugh, Dopler, Parmer, Christ, and Schettler.

A motion was made by Director Hooper and Seconded by Director Gehr to dispense with the reading of the minutes from the previous meeting as they were printed in the DR. Motion Carried.

Report of Officers:

Director Gehr reported that due to a bad winter in his area there were not many juniors, making the numbers at shows down from previous years.

Director Emerson reported that the first three shows in his area showed the number of exhibitors were up, but the number of animals were down. He also noted that there weren't too many juniors.

Vice-President MacKinnon stated that it had been a good year for the Dutch and actually rabbits in general in his area. He said that they have lost a lot of older breeders but there are quite a few new ones coming up.

Director Hooper noted that they have a lot of Youth breeders in his area. He said that now they are sanction Youth Dutch at the shows and this has caused a decrease in the number of animals being exhibited in the Open shows. He stated that we could still use articles and information for the new Guidebook. He said he is still getting ads and would like updates and more info. This is to be a quality Dutch Guidebook. He's hoping for a mid-summer to July printing date.

Secretary Hart echoed Dick with regards to the juniors and that the numbers have been down. She also noted that our membership has grown with a total of 324 adults - 316 Youth - and 84 husband/wife combinations. This makes a total of 808 members.

Board Minutes, con't.

President Mullinax noted that the Dutch were really up in the south. He said that at the Carolina Dutch Show they had 115 Dutch with 21 exhibitors. He said the Youth were picking up and noted that the Youth had taken several Best In Shows with Dutch.

Jack Wireman entered the room to present a bid from the Ohio Dutch RC for the 1996 NDS. The dates are April 26-28 at the Darke County Fairgrounds in Greenville, OH. A motion was made by Director Emerson and seconded by Director Reed that Ohio be awarded the 1996 NDS. Motion carried.

Al Butler came in to give a financial report on the Publicity Department. He said that sales were down from the past and that this year they have a close out taggle on some discounted items. He stated that they have \$4,000.00 worth of inventory.

There was a discussion on the Publicity Department, whether it was self supporting, and if some possible new items were needed. President Mullinax is to contact Diane Schaefer with regard to possible publicity items that could be sold by the ADRC.

A motion was made by Director Hooper and seconded by Secretary Hart that the Publicity Report by Al Butler be accepted. Motion carried.

Director Reed noted that he was shocked at the amount of ADRC Standards ballots returned. He stated that he couldn't understand why everyone did not exercise their right to vote. He said that there had to be a reason for it and possibly some didn't understand or felt that they didn't know enough about it.

It was brought up about the ADRC Hall of Fame. Director Reed made a motion that we start with a base and make guidelines to follow for induction. This was seconded by Director Hooper. Motion carried.

Director Reed made a motion that the committee get back to the Board within 30 days with regard to guidelines for induction. This was seconded by Vice-President MacKinnon. Motion carried.

Board Minutes, con't.

Old Business. - The sweepstakes seller's class and fur class trophies were ordered and shipped to the Inn at Reading by the trophy company on Tuesday. At this time, it is not known if they arrived. There was discussion about this and the membership will be asked to vote on a change to this. Only a few of the sweepstakes winners are in attendance, and this creates double mailing and a large inconvenience for repackaging and shipping again. The winners need recognition and they can be acknowledged for their wins at the NDS, with trophies or awards being mailed directly to them from the company.

There was also a discussion as to the amount of sweepstakes awards purchased. Open sanctions are \$9.00 and the sweepstakes allows for 10 trophies for the Open. Youth sanctions are \$6.00 and 19 trophies are purchased.

Director Reed noted that President Mullinax should bring this to vote of the general membership and explain that the Board is trying to look at this logically and in the best interest of the club and membership.

Doreen Bengtson came in and gave a complete update on the 1995 National Dutch Show in Wisconsin. After a few questions and complete answers, Doreen was thanked by the Board.

New Business: Director Reed made a motion that President Mullinax speak with the Publicity Department and ask that they submit a report to each of the Board of Directors 10 days prior to the 1994 ARBA Convention in Tulsa, showing what has been sold of each item and a complete total inventory of all the items available. Motion was seconded by Kevin Hooper, motion carried.

There was a discussion as to how soon NDS catalogs should become available. It was felt that they should be out at least 60 days prior to the show.

Directors Emerson and Hooper were to go over the show rules and sellers class rules and incorporate the two. They will submit a new copy to each Board member to go over and review.

Board Minutes, con't.

Director Reed wanted to go on record noting that Director Gehr has done a very good job as editor of the DR with what he has had to work with. Wayne MacKinnon stated he felt the same way.

There was a letter read from Dr. Chris Hayhow to the editor with regard to being omitted in the judge's listing in the last Dutch Reporter. This letter was gone over and discussed. It was noted the Secretary prints the listing from her membership files, not the DR editor, and Dr. Hayhow had joined as Chris and Johnora Hayhow. There was no mention that he was a judge on his application and therefore he was not listed.

Director Reed noted that it should be recorded that this letter was read and discussed by the Board and it was the opinion of those Board members present that they were in full support of the action taken by editor Gehr.

The Treasurer's report was given. Motion to accept the Treasurer's report was made by Director Reed and seconded by Director Hooper. Motion carried.

Being no further business of the ADRC Board, Director Gehr made a motion to adjourn, seconded by Vice-President MacKinnon. Motion carried, meeting adjourned.

GENERAL MEMBERSHIP MEETING

1994 NDS - READING, PA

The meeting of the general membership of the ADRC was called to order at 7:10 AM April 29 at Reading, PA in the showroom.

Officers and Directors present were President Mullinax, Vice-President MacKinnon, Secretary-Treasurer Hart, and Directors Hooper, Emerson, Gehr, and Reed. Directoires absent were Pugh, Dopler, Parmer, Christ, and Schettler.

There was a moment of silence for those Dutch breeders that had passed away during the last year.

General Minutes, con't.

Martin Preede made a motion, seconded by Doreen Bengtson, to dispense with the reading of the minutes from the last general membership meeting as they were printed in the DR. Motion carried.

Directors Reports: Director Emerson stated shows are down in numbers but up in the number of exhibitors. Not many juniors are being shown in the first few shows of the year.

Director Gehr stated juniors are down due to a rough winter in the medwest. The number of animals shown has been down also.

Director Hooper noted that Youth exhibitors are up in his area, and the winter was tough there also.

Norma echoed Dick's remarks about shows and juniors. She also stated that the ADRC membership has increased to slightly over 800 members.

President Mullinax stated the number of exhibitors of Dutch are up in his area.

The Youth sweepstakes awards were discussed and it was reflected that the Open sanctions are 50% higher than the Youth, and 9 less sweepstakes awards are given to the Open.

Alan Miller made a motion to due away with the District trophies for Youth and only award the top ten winners trophies as is in the Open. The 11th through 20th place winners in both Open and Youth would receive a certificate. Motion seconded by Larry Bengtson. Motion carried.

A discussion was held on awarding the sweepstakes trophies at the National Dutch Show. This creates problems in that many people receiving the awards are not present, thus their trophies have to be packaged and shipped twice, making postage more expensive and increasing the possibility of damage. In addition, it allows more time to correct any mistakes that may have occurred.

Dick Gehr made a motion to rescind the motion previously made to distribute the sweepstakes trophies at the NDS, seconded by Alan Miller. Motion carried.

General Minutes, con't.

It was pointed out that there would be some items on a close-out discount table from the Publicity Department. There were still a few memorial cups from this show, and don't forget the raffle for next year's NDS.

Doreen Bengtson invited those in attendance to come to the 1995 NDS in Oshkosh, Wisconsin. January 15th will be the deadline for ads for the catalog, with the catalog mailing taking place around mid-February. The judges for the Open will be Scott Williamson, Stan Freed, and Conall Addison. The Youth judge will be Gary Grimm, and possibly a second Youth judge will be added. The dates are April 28 - 30.

Secretary Hart gave the Treasurer's report.

President Mullinax stated the Board had considered doing away with the ribbons for Open due to the expense. A discussion also followed about the Youth showing in Open. There was no action taken.

Alan Miller questioned what the membership was getting for their dues. The DR has been cut to 4 issues a year, now possibly cutting out the ribbons. A suggestion was made to possibly follow the United Kingdom by putting out a Yearbook only once per year listing all the major wins, and dispensing with the DR.

Dick Gehr commended Kevin Hooper for his work on the Standards, and expressed a concern over the number of ballots cast. A discussion followed questioning the validity of the Standards ballot as there was no closing date published for the ballot. It had been printed previously that the ballot would appear in the next issue of the DR, and it also stated to vote the ballot, cut it out and send it to Kevin. If someone wanted to vote, they had the opportunity. A deadline date shouldn't be necessary if one really wants to vote. All they have to do is fill in the ballot and send it in at their first convenience. Dick Gehr stated he would not change the ballot from the way it was sent to him for publication.

A discussion followed on several areas of the Standard, nose spots in particular. Mark Pecaric expressed his opinion on this issue.

Norma Hart

Dick Gehr explained that the manner the Standard addresses the nose spots should be correct, and judges would have to be educated in examining the Dutch for DQ's.

More discussion followed on the sweepstakes trophies for Open and Youth. Also on the DR. A suggestion was made to have two large issues and two small issues each year, to be more constructive with the articles, etc.

A thought was to have the Standards proposals voted on at National Conventions. This could be done in the manner of a poll, but nothing official could be decided as this would conflict with the ARBA's regulations.

Several people expressed a view of donating towards the sweepstakes in order to have more awards.

Stan Goeglein made a motion for the Vice-President to form a committee to address problems concerning the clubs financial situation and report at Tulsa, seconded by Doreen Bengtson. Motion carried.

Alan Miller questioned why the \$1.00 for Best of Variety was done away with. It was explained when we required \$1.00 for Best of Variety, nothing was necessary for Best of Breed and Best Opposite. So we went to \$5.00 for Best of Breed and \$3.00 for Best Opposite Sex, and eliminated the required \$1.00 for Best of Variety.

Alan Miller made a motion to require \$5.00 for Best of Breed, \$3.00 for Best Opposite Sex, and \$1.00 for Best of each variety effective January 1, 1995, seconded by Kevin Hooper. Motion carried by majority.

Discussion followed noting the expense to show sponsors now for all the sanctions, judges, buildings, etc.

Alan Miller questioned whether placement stickers would be used for the top 10 rabbits in a class at this NDS. Mark Pecaric said not to his knowledge. Doreen stated it would be done in Wisconsin.

Reggie Shull made a motion to adjourn, seconded by Rick Billups. Motion carried.

If you have noticed any problem with some of your mailings, we are, 'unfortunately' having some difficulty with the postal service. Our mail goes through South Suburban, IL and Chicago has had burned, undelivered and 'hidden' mail for quite some time now. The matter is being looked into, but many are suffering the burden of it. I sent two memberships to the same town (different people) but they never arrived. I was notified and new cards were again issued and sent. One party did receive the second card while the other had not yet received either mailing. Both were sent out on the same day, same time, from the same post office. Please keep this in mind when mailing something in or when waiting to receive your membership, sanction, or whatever. Some mail has taken up to two weeks to deliver from the date of the postmark; unreal! Please send for your sanction requests early enough before your show date, and remember, sanction fees are \$9.00 for open and \$6.00 for youth. This has been in effect since January 1st. and is listed in your Secretary handbook issued to each club by the American Rabbit Breeders. Remember to check your membership cards and your Dutch Reporter label for your expiration date. Each label has this information printed on it along with your first class expiration date if you have requested and paid for this service.

I was saddened to hear of the death of Dr. T.E. Reed. As I sit here writing this, I still can't believe that he is no longer with us. I've started this paragraph at least a dozen times and still cannot find the right words to express my feelings with regard to this tragic loss of a very good friend to many of us. 'Doc' was always there when I needed him and he wasn't afraid to jump in head first to help out at a moments' notice! I will miss him deeply. To his family, we extend our most heartfelt sympathy!

Please remember to notify this office of any change of address. Your Dutch Reporter label is printed 'here' and if your address is not correct on it, your Dutch Reporter will not be forwarded by the Postal Department! (Only First Class Mailings). So check your DR address label and send corrections directly to me.

I hope that you are making plans for Tulsa. Now's the time to be thinking about the ARBA Convention and that possible Dutch win. It's only about 3 1/2 months away! (Winter too!!!) STAY COOL!

AMERICAN DUTCH RABBIT CLUB FINANCIAL STATEMENT

* GENERAL FUND:

PREVIOUS BALANCE 10/25/93.....\$ 3345.26

INCOME FROM 10/26/93 THROUGH 04/27/94:

MEMBERSHIPS \$ 2015.00
 SANCTIONS..... 4327.00
 MISCELLANEOUS..... 1319.13
 CHECKING INTEREST... 11.12

TOTAL INCOME: \$ 7672.25

MISCELLANEOUS INCOME DEFINED:

CANADIAN & FIRST CLASS DUTCH REPORTER MAILING FEES; DR ADS; SELLERS' CLASS MONIES COLLECTED; ADRC COLLECTION FROM WASHINGTON ARBA CONVENTION; GUIDEBOOK MONIES COLLECTED; NSF CHECKS AND BANK SERVICE CHARGE FEES COLLECTED; DONATION TO THE ADRC; DUTCH REPORTER MAILING COSTS FOR BACK ISSUES REIMBURSEMENT; ARBA REGISTRATIONS:

EXPENSES FROM 10/26/93 THROUGH 04/27/94:

ARBA CHARTER RENEWAL FEE.....\$ 35.00
 OFFICE MAX (SUPPLIES)..... 11.98
 MEMBERSHIP CARD PRINTING..... 58.56
 SERVICE CONTRACT ON COMPUTER..... 119.95
 EDRF ('94 NDS ALLOTMENT)..... 500.00
 EDRF (ADRC COLLECTION FROM CALIFORNIA NDS)..... 171.00
 SELLERS' CLASS PAYBACKS FROM '93 CONVENTION..... 200.00
 CONTINGENCY FUND TRANSFER (FROM GF TO MONEY MARKET). 309.00
 BANK CHECKING FEES..... 130.30
 WENTON CARLTON (ADRC ALLOWANCE FOR '93 ARBA CONV.).. 50.00
 NSF CHECKS AND BANK SERVICE CHARGES DEDUCTED..... 66.50
 SECRETARY TRAVEL ALLOWANCE TO '93 ARBA CONVENTION AND '94 NATIONAL DUTCH SHOW..... 549.00
 TO ADRC PUBLICITY/BUTLERS (ALLOWANCE FROM ADRC MEMBERSHIPS)..... 510.00
 JEFF ANDREWS (SWEEPSTAKE CHAIRPERSON)..... 649.00
 ADRC SECRETARY (COMMISSION FROM MEMBERSHIPS AND SANCTIONS ONLY; FOR 7 MONTHS/SEPT '93 THRU MARCH '94)..... 1472.75
 US POSTMASTER (ALL MAILING FEES & PERMIT)..... 600.37
 STINEMAN RIBBON CO. (SWEEPSTAKE RIBBONS O/Y)..... 618.60
 M & D PRINTING (DR PRINTING & MAILING FEES)..... 1869.45

TOTAL EXPENSES: \$ 7921.46

GENERAL FUND PREVIOUS BALANCE 10/25/93..... \$ 3345.26
 INCOME 10/26/93 THROUGH 04/27/94..... 7672.25
 EXPENSES 10/26/93 THROUGH 04/27/94..... 7921.46

GENERAL FUND BALANCE 04/27/94..... \$ 3096.05

*** CONTINGENCY FUND MONEY MARKET ACCOUNT:**

PREVIOUS BALANCE 10/93 \$ 5232.81

INCOME FROM 10/93 THROUGH 04/27/94:

INTEREST EARNED..... \$ 60.45

TRANSFERS FROM GENERAL FUND... 309.00

CONTINGENCY FUND/MONEY MARKET ACCOUNT BALANCE
 ON 04/27/94..... \$ 5602.24

TOTAL FUNDS AVAILABLE:

GENERAL FUND..... \$ 3096.05

CONTINGENCY (MONEY MARKET) FUND..... \$ 5602.24

TOTAL FUNDS AVAILABLE: 04/27/94..... \$ 8698.29

I CERTIFY THIS TO BE A TRUE AND ACCURATE STATEMENT OF
 THE FINANCIAL CONDITION OF THE AMERICAN DUTCH RABBIT CLUB.

Norma Hart

 NORMA HART, SECRETARY/TREASURER ADRC

4/27/94

 DATE

H	JACK & RUTH WIREMAN	H
O	of	O
B	Jack's Bunnies	B
B	5475 Seeman St. SW	B
Y	Navarre, OH 44662	Y
DUTCH	Phone: 216-484-1397	45+ years

ANDERSON'S RABBITS 6/94

Quality Dutch - Blacks and Blues
 New Zealand Whites




Mandy Anderson
 301 E. Conant St.
 Portage, WI 53901
 Ph: 608-742-6526

Travis Anderson
 W8076 Thompson
 Poynette, WI 53955
 Ph: 608-635-7157

DUTCH TREAT RABBITRY

DUTCH ONLY

BOSV
 Tortoise
 1990 ARBA
 Convention



NCRBA
 ARBA
 ADRC
 URBA

Mrs. Carol Snyder 604 Sunny Brook Dr.
 Monroe, NC 28110 6/94

ADRC PUBLICITY FUND REPORT 10/27/93 THRU 4/27/94

INCOME:

SALES	\$ 297.50
ARBA CONVENTIONS SALES	525.28
PUBLICITY FUNDS FROM ADRC 10/92-12/31/93	510.00
POSTAGE INCOME for Mail Orders	29.77

TOTAL INCOME \$1362.55

EXPENSES:

Postage and UPS (Includes items for 1993 ARBA Convention)	\$ 123.61
Monarch Sports Check #424	226.00
Postage & Telephone Check #425 (Tel.16.02)	41.87
Monarch Sports Check #426	58.00
Postage & UPS Check #427	17.76
Monarch Sports Check #428	160.00
Take Me Back to Tulsa 1/2 page Ad Check #429	80.00
Take Me Back to Tulsa Double Booth Check #430	225.00
Monarch Sports Check #431	90.00
Change for NDS Check #432	50.00

TOTAL EXPENSES \$1072.24

CHECKING ACCOUNT BALANCE	\$ 504.57
CASH ON HAND	52.94
SHARES ACCOUNT	146.18

Outstanding bills:

Commercial Press	\$ 570.15
Crystal Impressions	168.37

ADRC PUBLICITY DEPARTMENT:

Al Butler

 AL BUTLER

Barb Butler

 BARB BUTLER

1994 NATIONAL DUTCH SHOW
READING, PENNSYLVANIA

JUDGES: DR TERRY REED, LARRY BENGTON & AL BUTLER
BEST OF BREED: BLACK JUNIOR DOE OWNED BY LYNN SHAW, IN
BEST OPPOSITE: STEEL JUNIOR BUCK OWNED BY ALAN MILLER, IN
(SEE OTHER SIDE FOR COMPLETE UNOFFICIAL REPORT)

REPORT:

The 1994 National Dutch Show was one to remember. Over 400 open Dutch entries made the judging a good days job for the judges. Thanks to the Eastern Dutch Rabbit Fanciers for a great show! It was a great time, getting to see old friends and their years work in their breeding programs. The Inn in Reading was a really good motel, with a colonial decor and lots of room for everyone. The Banquet was especially well done and the food was terrific. Thanks to Mark Pecaric, show superintendent for his difficult job, well done with grace and humor.

Thanks to Don Dowd and Larry, we went to Reading with 50 souvenir 1995 NDS cups to sell. To date we have sold 11 of them and your next opportunity will be at the Fun Show in June. These cups cost the UMDRC \$5. and are presently being sold for \$7.50 each. They have the UMDRC 1995 NDS logo on them with the show dates, so if you have trouble remembering the dates, or the place, BUY A CUP!!

The hat collection at the 1994 NDS banquet amounted to \$250., thanks to a special last minute donation by a Mini-Lop breeder. (Thanks Diane)

I was able to twist the arm of the 1994 NDS secretary and they let me copy the show reports as they came in and so you see the results on the other side of this sheet.

Specials Donations:

\$40. -----Warren McNamara
\$10. -----Lynn Shaw
\$25. -----Bob McKenna
\$10. -----Ken Emerson
\$20. -----Larry Thompson (for youth)
\$50. -----Wayne MacKinnon
\$ 7.50 -----Mark Pecaric

Total \$162.50

That is a good start, but now everyone needs to start beating the bushes for every \$ you can get.

It was suggested by Bob McKenna that we solicit donations for sponsors for each variety, so we now have Bob McKenna as the sponsor for the Blues, Wayne MacKinnon as the sponsor for the Blacks, and Warren McNamara as the sponsor for the Chocolates. A donation of \$25. or more will put your name on the sponsor list for a variety-Torts, Steels & Grays to go yet in open and all colors open yet in youth. Thanks contributors!!

Blacks: 35 Sr Bks	28 Sr Does	32 Jr Bucks	36 Jr Does	
1. K&D Emerson	Robin Hessick BSrAC	Bob Worden BOBlk	Lynn Shaw BOB, BJRAC	
2. Wayne MacKinnon	Douglas Foote	Lynn Shaw	D&D Schwartz	
3. Linda Anderson	Larry Snyder	Wayne MacKinnon	Roger Pierce	
4. K&D Emerson	Esterly/Luckenbill	R&K Rabbitry	Larry Nixon	
5. Jim Smith	Clark Crawford	R&J Billups	P&S Peters	
6. Lynn Shaw	Jim Smith	Wallace Simmons	Wayne MacKinnon	
7. Robin Hessick	F&K Mullinax	Kevin Hooper	Lynn Shaw	
8. R&J Billups	Laura Fassett	F&K Mullinax	D&D Schwartz	
9. K&D Emerson	Hero Wolters	Anthony Micallef	R&J Billups	
10. Bob Worden	Kevin Hooper	Marty Preede	Dawn Bradshaw	
Blues: 17 Sr Bks	26 Sr Does	16 Jr Bks	19 Jr Does	
1. George Strahler BV	Arlene Joyce BOSV	Lynn Shaw	R&J Billups	THE
2. R&J Billups	Esterly/Luckenbill	K&D Emerson	Wayne MacKinnon	
3. Kevin Hooper	Mark Pecaric	Jack Pugh	Ricky Wood	1 9 9 4
4. Jim Smith	P&S Peters	Dawn Bradshaw	Ricky Wood	
5. Roger Pierce	Jill Dobson	Dawn Bradshaw	Jack Pugh	
6. Ricky Wood	Linda Anderson	P&S Peters	Jack Pugh (?)	National
7. Stan Goeglein	Bob Worden	Dale Cushman	Linda Anderson	
8. Robin Hessick	Clark Crawford	F&K Mullinax	P&S Peters	
9. D&D Schwartz	D&D Schwartz	R&B Eich	Jack Pugh	Dutch
10. Esterly/Luckenbill	K&D Emerson	Linda Anderson	Linda Anderson	
Chocolates: 24 Sr Bk	21 Sr Does	17 Jr Bks	12 Jr Does	Show
1. Anthony Micallef	Anthony Micallef	Shelly Thompson	Ricky Wood	
2. Thomas Geisweit	Kevin Hooper	A Micallef	K&D Emerson	Unofficial
3. Warren MacNamara	Thomas Geisweit	Larry Snyder	Wayne MacNamara	
4. Ricky Wood	Carl Decker	Clark Crawford	G&M Hamersley	
5. Carl Decker	Gorden Hammersley	R&B Eich	Adam Smith	Report
6. Ricky Wood	Robin Hessick	Kevin Hooper	Kevin Hooper	
7. Carl Decker	Carl Decker	P&W Peters	Wayne MacNamara	
8. Warren MacNamara	Kevin Hooper	G&M Hamersley	A. Micallef	
9. Valerie Dahl	A. Micallef	P&W Peters	Ricky Wood	
10. Adam Smith	K&D Emerson	Wayne MacNamara	Valerie Dahl	Judges:
Tortoise: 27 Sr Bks	15 Sr Does	18 Jr Bks	23 Jr Does	
1. Todd Uran	A. Micallef	Todd Uran	Ricky Wood BOSV	Dr Terry Reed
2. Kevin Hooper	Jim Smith	Kevin Hooper	Mark Pecaric	
3. Ricky Wood	Marty Preede	Jill Dobson	R&K Rabbitry	Larry Bengtson
4. A. Micallef	K&D Emerson	Ricky Wood	F&K Mullinax	
5. Ricky Wood	Esterly/Luckenbill	Kevin Hooper	Jim Smith	
6. Jim Smith	A. Micallef	Jill Dobson	Rickey Wood	Al Butler
7. Kevin Hooper	Wayne MacKinnon	K. Sugalski	Jill Dobson	
8. Jim Smith	Jim Smith	Clark Crawford	Kevin Hooper	
9. Mark Pecaric	Jack Wireman	Kevin Hooper	Jill Dobson	
10. Wayne MacKinnon	Sue Wilson	Kevin Hooper	Kevin Hooper	Youth: sorry
STEEL: 8 Sr Bks	9 Sr Does	16 Jr Bucks	5 Jr Does	we are not ig-
1. Kevin Hooper	Kevin Hooper BOSV	Alan Miller BOS	Clark Crawford	noring the youth,
2. Clark Crawford	Alan Miller	Alan Miller	Alan Miller	but there were
3. Esterly/Luckenbill	Kevin Hooper	Ricky Wood	Jack Pugh	no placings by
4. Ricky Wood	Jack Pugh	Dan Nixon	Valerie Dahl	UMDRC area youth,
5. Bill Geitzenauer	Alan Miller	Valerie Dahl	Valerie Dahl	& I forgot to get
6. Robin Hessick	Larry Nixon	R&J Billups		the report. There
7. Jack Pugh	Valerie Dahl	Clark Crawford		were about 125
8. Alan Miller	Valerie Dahl	Valerie Dahl		entries in youth &
9.	Larry Thompson	Ricky Wood		the judge was
10.		Clark Crawford		Barb Butler.
GRAYS: 9 Sr Bks	10 Sr Does	10 Jr Bks	10 Jr Does	
1. Kevin Hooper BOV	Alan Miller	Alan Miller	Dan Nixon	
2. Dan Nixon	Billy Bounds	Dan Nixon	Steve Schilling	
3. Douglas Foote	G&M Hammersley	Ricky Wood	Kevin Hooper	
4. Douglas Foote	Jack Pugh	R&B Eich	Dan Nixon	
5. Jack Pugh	Kevin Hooper	Kevin Hooper	Steve Schilling	
6. Alan Miller	Larry Nixon	Steven Schilling	Alan Miller	
7. Kevin Hooper	Jack Pugh	Bill Geitzenauer	Valerie Dahl	
8. Bill Geitzenauer	Douglas Foote	Jack Pugh	Alan Miller	
9. Larry Nixon	Valerie Dahl	Ricky Wood	Hero Wolters	
10.	Eliminated	Sue Wilson	Valerie Dahl	

JUDGING THE 1994 NATIONAL DUTCH SHOW

It was indeed my honor and pleasure to have the opportunity to judge the 1994 National Dutch Show hosted by the Eastern Dutch Rabbit Fanciers. This club must be complimented for all the efforts they put forth to host an outstanding event.

It is always interesting to go back over notes of the various national shows and ARBA conventions that have been judged and compare the various traits that are observed in the classes that I judge.

The two Black classes judged gave the impression that there was a very high quality top end of the class, no middle; and, a bottom of the class. The two Tort classes, in my opinion, had quality much deeper through the class than the Blacks.

I was impressed with the improved quality of head type and the ears on the animals in most varieties.

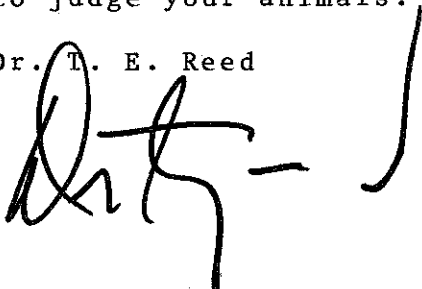
In the past, there have been an extremely large number of animals that were very pinched in the lower hip. This did not appear to be as great a problem as in the past; but, there was a lot of animals, particularly in the Black classes, that were very weak in the shoulder.

I was very impressed with the overall improvement of the quality of Steels as it related to color and type. Of great concern is the Chocolate color and the Blue color. Presently, the standard calls for a medium-dark blue. If the blue color in the next Standard of Perfection goes to dark blue only, there is approximately 50% of the class that I judge that are going to have some very severe problems. The area of Chocolate color that gives me great concern is undercolor. Unfortunately, very few of the Chocolates had the bluish-dove undercolor next to the skin. This will certainly allow for the dilution of the surface color.

The blaze and neck are each allocated five points. If we change positions of many of the neck markings with the blaze, the number of animals that placed much lower would be astounding. Even though the neck marking is not visible, it is still allocated five points. When there is a full neck and the animal loses the complete five points in national competition, this can be a difference between winning and losing.

The above are just my personal observations and are meant to be constructive criticism. I compliment all of the breeders for their efforts and I thank each of you again for the opportunity to judge your animals.

Dr. T. E. Reed



RE: MAXIMUM WEIGHT ON JUNIORS

It is the goal of every species of animals to breed for early maturity of the various characteristics of the species. This should not be any different in the domestic rabbit. An early maturing and fast growing rabbit does not indicate that it will go over the maximum weight limit at maturity. It is my opinion that it would be a total mistake to place a maximum weight limit on the junior Dutch rabbit. This would retard progress!

Some of the breeds do put a maximum weight on junior rabbits with the intent of some of preventing an extra advantage to large rabbits. This may be appropriate for some breeds. However, in my opinion, it would not be in the best interest of the Dutch breed.

A maximum weight on the junior Dutch would not prevent the rabbit from being a "life time" junior. This I do believe is a problem in some areas where the small Dutch rabbit is shown as a junior for eternity. Placing a maximum weight on the junior class would not resolve this problem. Some specialty clubs have resolved the problem of small rabbits being shown as juniors forever by placing the ear number of the winning rabbits in the show reports. That will substantiate the age of the rabbit.

This has been successful in other clubs. An example of this is the Flemish Giant and Checkered Giant clubs.

RE: IDEAL WEIGHT

In some country's judging systems, there are points allocated for weight. If the animal exceeds or does not reach the ideal weight, points are deducted. In the American Rabbit Breeders Association judging system, the ideal weight is just a guide. I do not see where points can be added or subtracted for an animal being above or below the ideal weight as long as it carries the type and other characteristics that are mandated by the Standard of Perfection.

The only way where ideal weight may be a factor in a decision would be if you had two animals that had exactly the same point allocation then it may be preferable to place the animal that is closer to the ideal weight over the other. I have yet to see two Dutch rabbits that were identical in quality.

The reason for using smaller bucks is the fact that one likes to use a litter larger doe to have more reproductive capacity. By mating a smaller buck to a larger doe, the offspring will still fall within close proximity of the ideal weight.

Dr. T.E. Reed

1940 - 1994

Dr. Terry E. Reed, 54

Area veterinarian and rabbit specialist, Dr. Terry E. Reed, 54, died unexpectedly at 4:10 p.m. Saturday at Woodlawn Hospital in Rochester. He was stricken with a heart attack while judging a rabbit show.

Born March 19, 1940 in Fort Wayne, he was a son of the late Howard E. Reed and Mrs. Lulu Simmerman Reed, who survives at Ossian. His marriage to the former Sandy Newhard, who also survives, took place July 3, 1973 in Richmond, Ky.

Dr. Reed, a 1958 graduate of Ossian High School, received a bachelor's degree in animal science from Purdue University in 1960, a master's in human physiology from Purdue in 1962 and a DVM from the Purdue University Veterinary Medical School in 1965.

His professional career included a veterinary practice in Markle from 1966 to 1984 and serving as director of commercial rabbitry from 1976 to 1986. He served as director of ambulance services at Wells Community Hospital from 1978 to 1988 and was ambulance chief at Markle Volunteer Fire Department from 1967 to 1988.

He had been employed by Heinold Feed Co. since 1986, serving as director of rabbit research center and as rabbit specialist.

Dr. Reed's professional affiliations included vice president and president of American Rabbit Breeders Association from 1981 to 1994, rabbit disease consultant (independent) from 1972 to 1986, and as director of Rabbit Disease Diagnostic Laboratory since 1984.

He was the recipient of a National 4-H Scholarship and



Dr. Terry Reed

Sears Roebuck Scholarship, National Merit Physiology of Reproduction Award, Service of Merit as ARBA President, several local, state and breed specialty club awards and was honored as Florida White Rabbit Breeders Person of the Year in 1990.

Dr. Reed was also a member of the Markle F&AM, Fort Wayne Valley Scottish Rite and Mizpah Shrine.

Funeral rites will be officiated by Gerald Moreland at 11 a.m. Thursday at Elzey & Haggard Funeral Home at Ossian. Burial will take place in Oak Lawn Cemetery.

Friends may call from 7 to 9 p.m. Tuesday and from 2 to 5 and 7 to 9 p.m. Wednesday at the funeral home.

Preferred are memorials to the American Diabetes Association or ARBA Youth Scholarship Fund.



W E L C O M E N E W M E M B E R S

N a m e	S t a t e	R e c o m m e n d e d B y
Linda J Loucks	ID	Lori Leppert
Janet L Loucks	ID	Lori Leppert
Tiffany Kleppinger	NJ	Heather Long
Matthew Bermudez	CA	
Colleen Sherman	MA	
Larry N Fraysier	VA	ADRC Pamphlet
Kimberly Rappaport	NY	
Carl Poole	IA	Don Dowd
John Acheson	MT	Bre Ann J Van Gilder
Adam A Van Gilder	MT	Bre Ann J Van Gilder
Benjamin Drew Mickey	PA	Richard Mickey Jr
Jessica Luebbers	IL	Stacy Van Hoorn
Serena Duenas	NY	
Terese Bogart	KS	Earl Bogart
Kimberly Perry	WA	ADRC Pamphlet
Amanda Buchanan	KS	Bob Bergene
Courtney Lewis	CA	Karen Lewis
Jamie Oltman	NE	The Judge & Sarpy Co Fair
Pam Frenz	OH	
Le Ann McKinney	IN	
Emily Hederstedt	KS	Earl Bogart
Erin Moore	CANADA	Judy Currie
Patrick Murphy	OR	ADRC Pamphlet
Alanna Murphy	OR	ADRC Pamphlet
Isamar Vilanova Torres	PUERTO RICO	
Richie Cruz	NJ	Cookie Gittleman
Clarien Tiger	KS	
Brad W Blanchard	LA	
Gayle Hougard	MN	
Patrick Bell	CA	Linda Bell
Jenny Ladwig	WI	Gary Anderson
Heather Radke	MN	
Michelle Lasley	IN	Joan Lasley
Emma Heller	MT	Mary Heller
Anna Leonard	AZ	Chuck Christ
Kristin Lewis	TX	Roy Mc Clung
Candace L Baszler	MI	ADRC Pamphlet
Troy Hiltz	CANADA	ADRC
Maureen Gilligan	WA	
Terri Gegenfurtner	WI	
Kasey Gegenfurtner	WI	
Steve & Sheila Jones	AR	Carolee Riley
Christopher Jones	AR	Carolee Riley
Nicholas Jones	AR	Carolee Riley
Matthew Jones	AR	Carolee Riley
Diana Tubb	TX	Roy McClung
Jennifer Stearns	VT	
Katie L Smith	OR	
John A Baxter	UT	Karen Leonard

welcome new members continued.....

Name	State	Recommended By
Sean Godoy	CA	
Patrick & Marie (Panikowski)	Dunleavy	PA
Tyler Brown	OH	
Emily Jo Russell	OH	Jack Wireman/Jack's Bunnies
Rachael Gogswell	OH	David J Stumpf

We wish to thank you for joining with us and also thanks all those who recommended us. Welcome to the American Dutch Rabbit Club!

ADRC SELLER'S CLASS / 1994 NATIONAL DUTCH SHOW / READING, PA.

PLACEMENT	EAR#	VARIETY	SELLER	BUYER	PRICE
1	K38	Blk SD	K Hooper	L Shaw	\$ 100.00
2	D3ZE	Blue JD	J Dobson	A Miller	99.00
3	OTAY	Tort SB	J Smith	G Hamersley	40.00
4	NQCL	Tort SD	J Smith	No Sale	-
-	S9B	Tort SB	J Smith	No Sale	-
5	D9S	Blk SB	D Sugalski	No Sale	-
6	525	Tort SB	M Pecaric	Gittleman	15.00
7	DS89	Blk JB	K Sugalski	L Bengtson	15.00
DQ	DON	Blue SB	D Sugalski	No Sale	-

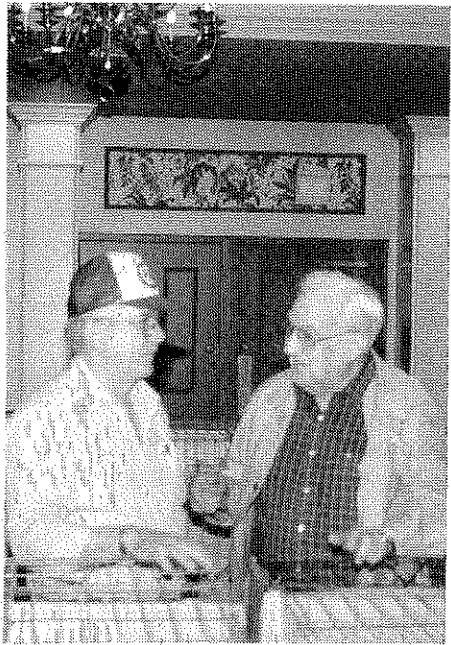
\$ 269.00

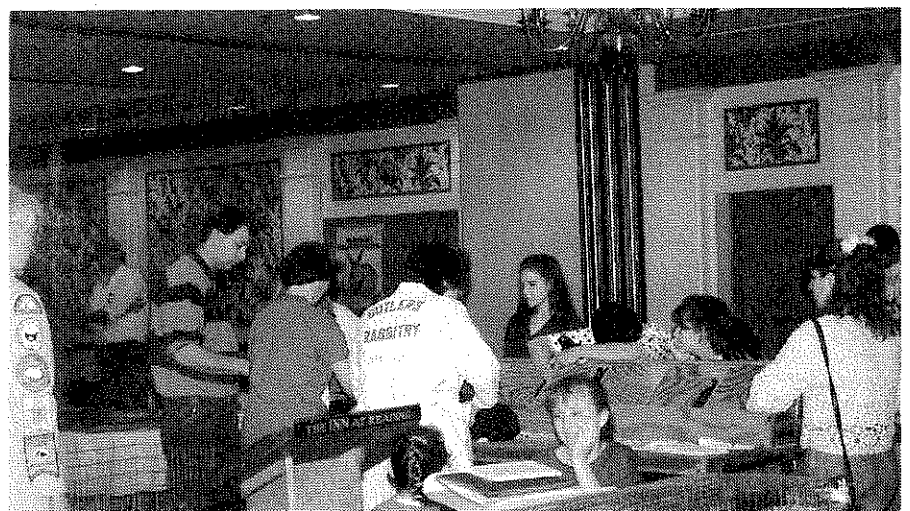
* Note/An additional \$1.00 was added to the sale price of the second place animal to make it an even \$100.00.

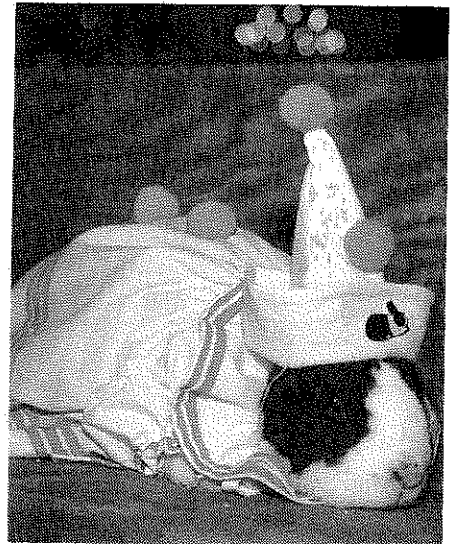
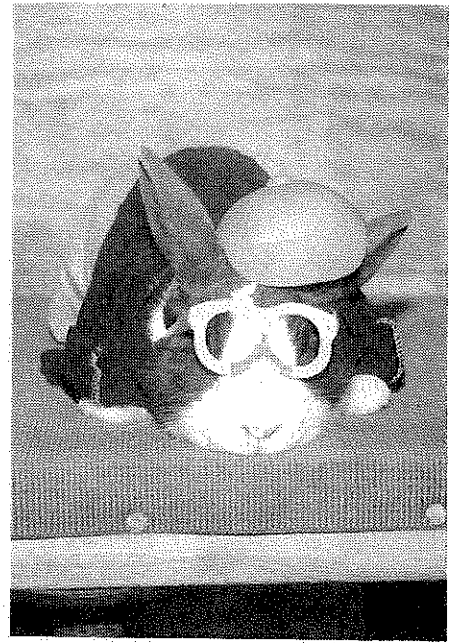
TOTAL SELLER'S CLASS COLLECTION: \$ 270.00

** First place and highest priced Seller's Class win went to KEVIN HOOPER.

THE AMERICAN DUTCH RABBIT CLUB WISHES TO THANK EVERYONE WHO PARTICIPATED IN ANY WAY IN THIS YEAR'S SELLER'S CLASS AT THE 1994 NDS.







BREWER FAMILY FARM

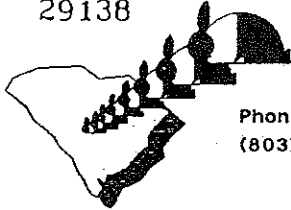
Margie And Ray Brewer

P.O. BOX 85
SALUDA, SC
29138

Holland Lops
Mini Rex

DUTCH,
All Colors

Ray Brewer,
All Breed
Judge No. 625.



Phone:
(803)445-7725

We speak "DUTCH" with a Southern accent,
And the accent's on TYPE!



KEVIN HOOPER

585 CHERRYBEND RD
WILMINGTON, OH 45177
PH: 513-584-4669



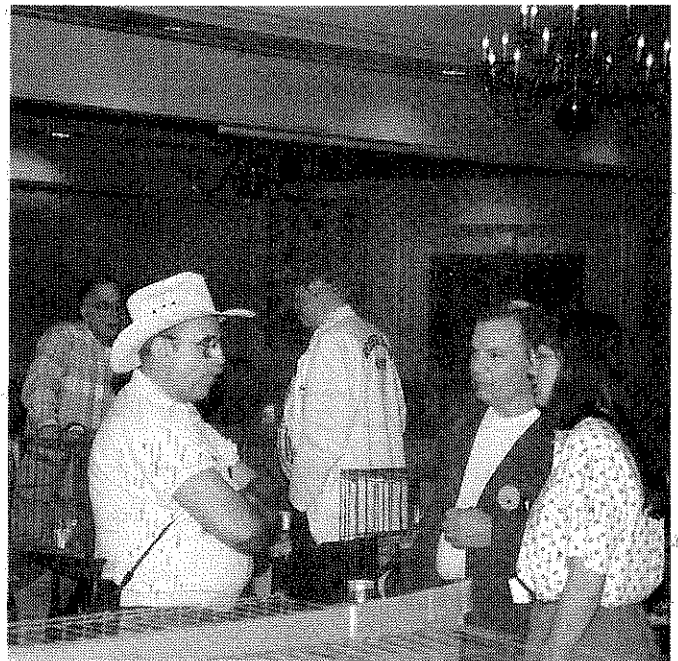
- Best Display 1991 National Dutch Show
- Best Display 1992 National Dutch Show
- Best Fur 1990 ARBA Convention
- Best Futr 1992 ARBA Convention
- Best Fur 1992 National Dutch Show
- Best Chocolate 1993 National Dutch Show
- Best Gray 1993 National Dutch Show

***MANY WINS AND PLACEMENTS
AT NATIONAL SHOWS***

* SATISFACTION
GUARANTEED

REASONABLE
PRICES

ALL COLORS SHIPPING AVAILABLE 6/94



Amber Miskell
2956 Palm Ave.
Highland, CA 92346
909-864-5464

Terri Bullis



(415) 952-6520

Specializing in Chocolate Dutch
Also Blacks - Greys - Steel

Show-Breeder-Pet Quality
Also Belgian Hares

24 Los Flores Ave.
So. San Francisco, CA 94080

TAKE ME BACK TO TULSA 1994 ARBA CONVENTION



October 30 - November 3, 1994

Expo Center, Tulsa Fair Grounds, Tulsa Oklahoma

ADRC SHOW SPECIALS

Anyone who would like to donate additional specials may do so. Please send your specials to Jack Colburn and indicate if it is for Open or Youth and also any other pertinent information that you may want (variety, class, etc. Send specials to:

Kansas Dutch Rabbit Club
Jack Colburn, Treasurer
1015 South Allen
Chanute, KS 66720

Make checks to: Kansas Dutch Rabbit Club. These specials will be posted at the ADRC Booth. Thanks!!


Harvest Buffet



BANQUET INFORMATION

We will be having a breakfast buffet on Wednesday, November 2nd at 8:15 A.M. It will be at the Harvest Buffet.

The address is 3637 Memorial Drive and is 5 blocks south of the hotels which are listed in hotel information. Cost for the all you can eat Breakfast Buffet is \$5.88 for adults and \$2.95 for children under 10 and under. This includes tax and tip. You will pay at the restaurant, but please fill out the form below so that we can provide a count to Harvest Buffet

NAME: _____

NUMBER ATTENDING, ADULTS _____ CHILDREN _____

SEND THIS FORM TO: Bob Bergene
30165 West 154
Gardner, KS 66030



Sent Check Dated July 25
38.00 + 4.94 = 42.94



HOTEL INFORMATION

HEADQUARTERS HOTEL: DAYS INN
8201 E. Skelly Dr.
Tulsa, OK 74129
(918) 665-6800
FLAT RATE: \$38.00 plus tax (13%)

A block of 25 rooms has been set aside for the ADRC. Ten of these rooms are kitchenettes, and fifteen regular rooms, please specify which you prefer. When you call, indicate that you are with the American Dutch Rabbit Club and confirm the rate of \$38.00.

ADDITIONAL HOTELS: HOLIDAY INN TULSA CENTRAL
8181 East Skelly Drive
Tulsa, OK 74129
(918) 663-4541
FLAT RATE: \$47.00 plus tax (13%)

A block of 10 rooms has been set aside for the ADRC. This hotel has indoor pool, restaurant and is in same parking lot area as Days Inn. Ask for Lillian Watson & indicate ADRC.

Georgetown Plaza Motel
8502 East 27th St.
I44 Exit 31st/Memorial
Tulsa, OK 74129
(918) 622-6616
ROOM RATE: \$23.99 and up

This motel is in same parking lot area as above hotels. No rooms have been blocked at this motel.



1. Location of hotels listed in hotel information
2. Harvest Buffet, Dutch Breakfast Banquet, Wed A.M.
3. Tulsa State Fairgrounds



LOCATIONS OF HOTELS, BANQUET & FAIR GROUND S

UPCOMING SHOWS

08/04-14/94 WISCONSIN STATE FAIR AT MILWAUKEE/WEST ALLIS WI CINDY STELLOH W274 S8425 BEAVER TRAIL MUKWONAGO, WI 53149 JKA1158 12530
 08/05/94 PREBLE CO AG SOCIETY AT EATON OH VICKI HECK 722 S FRANKLIN ST EATON, OH 45320 JKA1506 11190
 08/06/94 RIVERTON RBA AT RIVERTON WY MRS APRIL OLHEISER 48 DOOREL RD RIVERTON, WY 82501 JKA1534 11330
 08/06/94 WIND RIVER RBA AT RIVERTON WY MRS BECKY DUBRY PO Box 663 LANDER, WY 82520 JKA1485 11340
 08/06/94 ESSEX CO R & CBA AT TOPSFIELD MA MARTHA DRISCOLL 5 BROOKVALE DR DANVERS, MA 01923 JKA1870 12860
 08/07/94 JOHNSON CO FAIR AT GARDNER KS CLARENCE W LINSEY 316 SOUTH MAHAFFIE OLATHE, KS 66061 JKA811 11000
 08/07/94 CALUMET RBA AT CROWN POINT IN BETTE SOMMER 1413 TRUMAN HAMMOND, IN 46320 JKA1355 12030
 08/07/94 CALUMET RBA AT CROWN POINT IN BETTE SOMMER 1413 TRUMAN HAMMOND, IN 46320 JKYA728 1203Y
 08/07/94 MISSISSIPPI VALLEY FAIR AT DAVENPORT IA FLOYD DOPLER JR Box 511 ANDALUSIA, IL 61232 JKA864 12110
 08/07/94 MISSISSIPPI VALLEY FAIR AT DAVENPORT IA FLOYD DOPLER JR Box 511 ANDALUSIA, IL 61232 JKYA440 1211Y
 08/07/94 WASHINGTON COUNTY FAIR & RODEO AT HILLSBORO OR DEBRA HICKMOTT 2740 SW 185TH ALOHA, OR 97006 JKA1698 12660
 08/09/94 CARROLL CO FAIR AT MILLEDGEVILLE IL LINDA FOLKERS 25393 GENESSE RD STERLING, IL 61081 JKA1101 11750
 08/10/94 SCIOTO CO AG SOCIETY AT LUCASVILLE OH LORETTA BENNER 12969 ST Rt 104 LUCASVILLE, OH 45648 JKA1295 12960
 08/13/94 CALIFORNIA DUTCH RC AT MORGAN HILL CA DAVID UCHIYAMA 19630 AGATE CIRCLE #408 SALINAS, CA 93906 JKS1142 11380
 08/13/94 CALIFORNIA DUTCH RC AT MORGAN HILL CA DAVID UCHIYAMA 19630 AGATE CIRCLE #408 SALINAS, CA 93906 JKS1143 11390
 08/13/94 EAST RIVER RBA AT SIOUX FALLS SD RUBY REZAC RR 3 Box 50 SIOUX FALLS, SD 57106 JJA508 11570
~~08/13/94 CHEERYLAND RBA AT TRAVERSE CITY MI DENISE L BRETZKE 2611 WALLAKER RD BENTONIA, MI 49616 JKA672 11790~~
~~08/13/94 CHEERYLAND RBA AT TRAVERSE CITY MI DENISE L BRETZKE 2611 WALLAKER RD BENTONIA, MI 49616 JKYA295 1179Y~~
 08/13/94 MASON CO FAIR AT PT PLEASANT WV MAE MEADOWS RT 1 Box 613 MILTON, WV 25541 JKA1825 12700
 08/13/94 IOWA STATE FAIR AT DES MOINES IA EDYTHE WETH 1895 WILSON AVE WILTON, IA 52778-9221 JKA1344 12740
 08/14/94 MERCER CO FAIR AT CELINA OH TREVA MUEHLENKAMP 5579 SR 118 CELINA, OH 45822 JKYA817 1176Y
 08/14/94 NEBRASKA R & CBA AT OMAHA NE LINDA SNOYER RR 2 Box 185 COUNCIL BLUFFS, IA 50503 JKA1471 12850
 08/16/94 WHITESIDE CO FAIR AT MORRISON IL ALAN L GEERTS 21242 LYNDON RD MORRISON, IL 61270-9339 JKA1599 11620
 08/16/94 ZANESVILLE RBA AT ZANESVILLE OH CHERYL SMELTZER 9385 BLACK RUN RD NASHPORT, OH 43830 JKA1895 12570
 08/17-21/94 VENTURA COUNTY FAIR AT VENTURA CA SHERREL GILBERTSON PO Box 444 SOMIS, CA 93066 JKA1443 11640
 08/19-27/94 NATIONAL CAPITAL RBA AT GAITHERSBURG MD BARBARA H BESSWEIN 9805 HANKINS CREAMERY RD DAMASCUS, MD 20872 JKA641 12500
 08/19/94 ILLINOIS STATE FAIR AT SPRINGFIELD IL DALLAS MEYER RR #1 Box 146 THAWVILLE, IL 60968 JKA1425 11840
 08/20/94 TRI STATE RR AT COLDWATER MI DEBBIE MERCER 304 STANCER RD UNION CITY, MI 49094 JKA781 10290
 08/20/94 TRI STATE RR AT COLDWATER MI DEBBIE MERCER 304 STANCER RD UNION CITY, MI 49094 JKYA407 1029Y
 08/20/94 CAROLINAS DUTCH RC AT SHELBY NC LINDA L ANDERSON 146 CANDLEWOOD CIRCLE WAYNESVILLE, NC 28786 JKS1980 12950
 08/21/94 RANDOLPH CO RBA AT REDKEY IN CONNIE WAGNER 1004 N MERIDIAN ST SUITE 1 PORTLAND, IN 47371 JJA664 10750
 08/21/94 RANDOLPH CO RBA AT REDKEY IN JANET DAVIDSON R #4 Box 2410 PORTLAND, IN 47371 JJA338 1075Y
 08/21/94 LIMA RB/ALLEN CO FAIR AT LIMA OH DEB WEIHRACH 269 SO LAWN AVE BLUFFTON, OH 45817 JKA1550 12410
 08/21/94 LIMA RB/ALLEN CO FAIR AT LIMA OH DEB WEIHRACH 269 SO LAWN AVE BLUFFTON, OH 45817 JKYA848 1241Y
 08/24/94 THE GREAT DARKE CO FAIR AT GREENVILLE OH DON E WICK 5474 ST Rt 721 BRADFORD, OH 45308 JKA1260 12840
 08/25-09/05/94 MICHIGAN STATE FAIR AT DETROIT MI JOAN SCHWEDT 1120 W STATE FAIR AVE DETROIT, MI 48203-1087 JKA1202 11350
 08/25-09/05/94 MICHIGAN STATE FAIR AT DETROIT MI JOAN SCHWEDT 1120 W STATE FAIR AVE DETROIT, MI 48203-1087 JKYA638 1135Y
 08/25-09/05/94 NEW YORK STATE FAIR AT SYRACUSE NY KATHY ZINDAHL 19 ELM ST TULLY, NY 13159 JKA1667 11880
 08/27/94 NEVADA STATE FAIR AT RENO NV DIANA SARREN # 2327 CIELO VISTA DR SPARKS, NV 89436 JKYA937 1213Y
 08/28/94 BLUESTONE RBA AT OAK HILL WV MARGARET RICHARDSON 104 MOREAU PLACE OAK HILL, WV 25901 JKA1179 10840
 08/28/94 CENTRAL ME RBA AT RICHMOND ME ALISON LAMOND RT 1 Box 1604 TURNER, ME 04282 JKA1029 10830
 08/28/94 CENTRAL ME RBA AT RICHMOND ME ALISON LAMOND RT 1 Box 1604 TURNER, ME 04282 JKYA541 1083Y
 08/28/94 BLOOMINGTON-NORMAL RBA AT BLOOMINGTON IL DICK GATES 32177 BERNAUER RD DEER CREEK, IL 61733 HKA1178 12100
 08/28/94 BLOOMINGTON-NORMAL RBA AT BLOOMINGTON IL DICK GATES 32177 BERNAUER RD DEER CREEK, IL 61733 HKYA641 1210Y
 08/28/94 NEVADA STATE FAIR AT RENO NV BEVERLY CASALE # 2327 CIELO VISTA DR SPARKS, NV 89436 JKA1435 12130
 08/31-09/05/94 CANFIELD FAIR AT CANFIELD OH JUNE BURGOWNE # CANFIELD FAIR PO Box 250 CANFIELD, OH 44406 JKA1505 11270
 09/02/94 SOUTH DAKOTA STATE FAIR AT HURON SD DARLENE HORSLEY RR 1 Box 101 WESSINGTON SPRINGS, SD 57382 JKA1985 12930
 09/03/94 VAN WERT CO RBA AT VAN WERT OH BILL SMITH R 14462 ST Rt 116 VAN WERT, OH 45891 JKA1226 12350
 09/03/94 VAN WERT CO YOUTH RC AT VAN WERT OH CHRIS HEIZMAN 650 S WASHINGTON ST VAN WERT, OH 45891-2380 JKYA647 1280Y
 09/04/94 WESTERN IOWA RBA AT ONAWA IA SUSAN FARRELL 1701 OLD HMY 141 SERGEANT BLUFF, IA 51054 HKA1383 10690
 09/04/94 WESTERN IOWA RBA AT ONAWA IA SUSAN FARRELL 1701 OLD HMY 141 SERGEANT BLUFF, IA 51054 HKYA752 1069Y
 09/09-14/94 LOS ANGELES CO FAIR AT POMONA CA CHATA CLAYTON PO Box 2250 POMONA, CA 91769 JKA1102 99970
 09/09-18/94 KANSAS STATE FAIR AT HUTCHINSON KS SHIRLEY WILSON 7415 N YAGGY RD HUTCHINSON, KS 67502 JKA1126 12910

UPCOMING SHOWS

09/10-11/94 INDIANA STATE RBA AT INDIANAPOLIS IN MARILYN POE 1708 WHITCOMB AVE LAFAYETTE, IN 47904 HKA390 11220
 09/10-11/94 INDIANA STATE RBA AT INDIANAPOLIS IN MARILYN POE 1708 WHITCOMB AVE LAFAYETTE, IN 47904 HKYA234 1122Y
 09/10/94 WASHINGTON CO RC AT BRENNAM TX PAUL RICHTER RT 5 Box 301 BRENNAM, TX 77833 JKA570 98300
 09/10/94 TENNESSEE VALLEY FAIR AT KNOXVILLE TN DON HOLIFIELD C/O PO Box 6066 KNOXVILLE, TN 37914 JKA955 10320
 09/10/94 RABBIT BRORS & FANC OF CAPITAL DIST AT COBLESKILL NY KAREN MCGEE RD #2 Box 63F SCHAGHTICOKE, NY 12154 JKA1068 10730
 09/10/94 RABBIT BRORS & FANC OF CAPITAL DIST AT COBLESKILL NY KAREN MCGEE RD #2 Box 63F SCHAGHTICOKE, NY 12154 JKYA567 1073Y
 09/10/94 MID-MI RBA AT IONIA MI BONNIE HECKSEL 8467 WHITALL NE ROCKFORD, MI 49341 HKA310 11710
 09/10/94 MID-MI RBA AT IONIA MI ANGELA VEZINO 6575 McWHORTER HWY MULLIKEN, MI 48861 HKYA183 1171Y
 09/10/94 SIERRA FOOTHILL R & CBA AT GRIDLEY CA LOUISE WHITE 188 SELF LANE CROVILLE, CA 95966 JKA359 11820
 09/10/94 SIERRA FOOTHILL R & CBA AT GRIDLEY CA PATTI HEGENMEYER 132 FLYING CLOUD DR CROVILLE, CA 95965 JKYA669 1182Y
 09/10/94 MICHIGAN DUTCH RC AT IONIA MI JANET BOWERS 9399 W CHADWICK RD DEWITT, MI 48820-9120 JKS1845 12420
 09/10/94 MICHIGAN DUTCH RC AT IONIA MI JANET BOWERS 9399 W CHADWICK RD DEWITT, MI 48820-9120 JKYS1020 1242Y
 09/10/94 INDIAN HILLS RB AT OSKALOOSA IA KAREN M HORNADAY 1310 So 11TH CENTERVILLE, IA 52544 JKA912 12490
 09/10/94 INDIAN HILLS RB AT OSKALOOSA IA KAREN M HORNADAY 1310 So 11TH CENTERVILLE, IA 52544 JKYA473 1249Y
 09/11/94 SPRINGFIELD R & CBA AT SPRINGFIELD OH CATHY SHARROCK 536 W NORTH ST SPRINGFIELD, OH 45504 HJA835 97570
 09/11/94 BUSY BUNNIES YOUTH CLUB AT SPRINGFIELD OH CATHY SHARROCK 536 W NORTH ST SPRINGFIELD, OH 45504 HJYA464 9757Y
 09/15-19/94 LOS ANGELES CO FAIR AT POMONA CA CHATA CLAYTON PO Box 2250 POMONA, CA 91769 JKYA581 9997Y
 09/16-17/94 NEW MEXICO STATE FAIR AT ALBUQUERQUE NM EDWINA BARELA PO Box 8546 ALBUQUERQUE, NM 87198 JKA1385 11430
 09/16-17/94 NEW MEXICO STATE FAIR AT ALBUQUERQUE NM EDWINA BARELA PO Box 8546 ALBUQUERQUE, NM 87198 JKYA754 1143Y
 09/17-18/94 ILLINOIS RBA/STATE CONV AT SPRINGFIELD IL NORMA HART 190 N FIRST AVE COAL CITY, IL 60416 HJA1791 12020
 09/17-18/94 ILLINOIS RBA/STATE CONV AT SPRINGFIELD IL DALLAS MEYER RR 1 Box 146 THAMVILLE, IL 60968 HJYA960 1202Y
 09/17/94 LIMA RBA AT LIMA OH JUDY KIRACOFF 9470 N DIXIE HWY BLUFFTON, OH 45817 HKA1619 95370
 09/17/94 LIMA RBA AT LIMA OH JUDY KIRACOFF 9470 N DIXIE HWY BLUFFTON, OH 45817 HKYA873 9537Y
 09/17/94 WESTERN ME FAIR SHOW AT OXFORD ME DIANA WHITEHOUSE RR #2 Box 725 BRIDGTON, ME 04009 JKA1237 10660
 09/17/94 WESTERN ME FAIR SHOW AT OXFORD ME SHERRY GAMMON RR #2 Box 1178 PINHOOK RD BRIDGTON, ME 04009 JKYA656 1066Y
 09/17/94 PEACH TREE RF AT WESTON LA SANDIE ROUSH 828 ERVIN COTTON RD EROS, LA 71238 JKA1292 11420
 09/17/94 SOUTH JERSEY R & CBA AT MULICA HILL NJ MARTI SOUTHWICK 872 BRIDGETON PIKE SEWELL, NJ 08080 JKA1166 11950
 09/17/94 AMARILLO TRI-STATE FAIR AT AMARILLO TX BILLIE CLARK 511 6TH AVE CANYON, TX 79015 JKA1828 12550
 09/17/94 AMARILLO TRI-STATE FAIR AT AMARILLO TX BILLIE CLARK 511 6TH AVE CANYON, TX 79015 JKY1008 1255Y
 09/17/94 STARK CO R & CB AT TALLMADGE OH TERI INDORF 325 - 53RD ST SW CANTON, OH 44706 JKA1218 12720
 09/17/94 STARK CO R & CB AT TALLMADGE OH TERI INDORF 325 - 53RD ST SW CANTON, OH 44706 JKYA646 1272Y
 09/18/94 NUTMEG RBA AT GOSHEN CT SUSAN BIRMINGHAM 131 BLUEBERRY LANE SOUTHURBY, CT 06488-1928 JKA380 97580
 09/18/94 NUTMEG RBA AT GOSHEN CT SUE KLINE 46 BANNON ST TORRINGTON, CT 06790 JKYA187 9758Y
 09/18/94 COUNCIL BLUFFS RBA AT MISSOURI VALLEY IA RITA D JOHNSTON RR 2 Box 176-7 GLENWOOD, IA 51534 JKA1110 10340
 09/18/94 SANDBURR RBC AT ARGOS IN DIANA WILES 12517 UPAS RD PLYMOUTH, IN 46563 HKA424 11550
 09/18/94 SANDBURR RBC AT ARGOS IN JEFF YOUNG R #4 WINAMAC, IN 46996 HKYA246 1155Y
 09/19/94 WESTERN WASHINGTON FAIR AT PUYALLUP WA MILLIE WOLFE PO Box 813 PUYALLUP, WA 98371 JKA1306 11900
 09/19/94 WESTERN WASHINGTON FAIR AT PUYALLUP WA MILLIE WOLFE PO Box 813 PUYALLUP, WA 98371 JKYA698 1190Y
 09/22-26/94 CENTRAL WA STATE FAIR AT YAKIMA WA JEAN & JERRY HARRIS PO Box 1381 YAKIMA, WA 98907 HJA1447 11730
 09/24/94 HOOSIER DUTCH RF AT FT WAYNE IN GLENDA CUMMINGS 5735 So EMERSON AVE INDIANAPOLIS, IN 46237-2522 JKS823 99000
 09/24/94 HOOSIER DUTCH RF AT FT WAYNE IN GLENDA CUMMINGS 5735 So EMERSON AVE INDIANAPOLIS, IN 46237-2522 JKYS421 9900Y
 09/24/94 AUTO CITY RBA AT SALINE MI ANGIE ELLIS 21224 SHERMAN SOUTHFIELD, MI 48034 HKA1101 10870
 09/24/94 AUTO CITY RBA AT SALINE MI ANGIE ELLIS 21224 SHERMAN SOUTHFIELD, MI 48034 HKYA599 1087Y
 09/24/94 KAW VALLEY RC AT GARDNER KS CLARENCE W LINSEY 316 SOUTH MAHAFFIE OLATHE, KS 66061 HKA1515 11040
 09/24/94 KAW VALLEY RC AT GARDNER KS CLARENCE W LINSEY 316 SOUTH MAHAFFIE OLATHE, KS 66061 HKYA825 1104Y
 09/24/94 TRUCKEE MEADOWS RC AT RENO NV MICHELLE KLEPPS 5720 BOZIC LN SUN VALLEY, NV 89433 JKA1148 11560
 09/24/94 NIAGARA FRONTIER RC AT HAMBURG NY DOROTHEA ASHBERY 37 REGAL ST DEPEW, NY 14043-1017 JKA856 11990
 09/24/94 NORTH EAST OHIO RF AT JEFFERSON OH DENNIS & CHARLENE BENTON 1000 KINSMAN RD NE NORTH BLOOMFIELD, OH 44450 JKA528 12480
 09/24/94 NORTH EAST OHIO RF AT JEFFERSON OH DENNIS & CHARLENE BENTON 1000 KINSMAN RD NE NORTH BLOOMFIELD, OH 44450 JKYA265 1248Y
 09/24/94 MID-CITY RC AT YANKTON SD JUDY MENSCH PO Box 281 MENNO, SD 57045 JKA442 12650
 09/24/94 MID CITY RC AT YANKTON SD JUDY MENSCH PO Box 281 MENNO, SD 57045 JKS1949 12810
 09/25/94 SANDUSKY VALLEY RBA AT FREMONT OH ROBERT BOWMAN 7905 THOMPSON TWP Rd 81 BELLEVUE, OH 44811 HKA505 97190

UPCOMING SHOWS

09/25/94 SANDUSKY VALLEY RBA AT FREMONT OH ROBERT BOWMAN 7905 THOMPSON TWP Rd 81 BELLEVUE, OH 44811 HKYA287 9719Y
 09/25/94 WABASH-ERIE CANAL AT LOGANSPOET IN FAY HAUSER R 1 Box 42 LUCERNE, IN 46950 HKA503 97480
 09/25/94 WABASH-ERIE CANAL AT LOGANSPOET IN FAY HAUSER R 1 Box 42 LUCERNE, IN 46950 HKYA285 9748Y
 09/25/94 CUMBERLAND COUNTY RBA AT CUMBERLAND ME ALISON LAMOND RT 1 Box 1604 TURNER, ME 04282 JKYA446 1149Y
 09/25/94 WHITESIDE CO RBA AT ROCK FALLS IL VI DIRKS 28805 GAULRAPP RD ROCK FALLS, IL 61071 HKA448 11610
 09/25/94 WHITESIDE CO RBA AT ROCK FALLS IL VI DIRKS 28805 GAULRAPP RD ROCK FALLS, IL 61071 HKYA257 1161Y
 09/29/94 WASHINGTON CO RBA AT WASHINGTON PA BARBARA BOOHER 55 GRABLE RD WASHINGTON, PA 15301 JKA1591 12360
 09/29/94 WASHINGTON CO RBA AT WASHINGTON PA BARBARA BOOHER 55 GRABLE RD WASHINGTON, PA 15301 JKYA877 1236Y
 09/30-10/02/94 TULSA STATE FAIR AT TULSA OK ANNE DAVIS 3920 SO OMASSO AVE TULSA, OK 74105 JJA268 10790
 09/30-10/02/94 TULSA STATE FAIR AT TULSA OK ANNE DAVIS 3920 SO OMASSO AVE TULSA, OK 74105 JJOY123 1079Y
 10/01/94 DELAWARE CO RBA AT MUNCIE IN LYNN A LITTLER 8191 EAST CR 900N ALBANY, IN 47320 HKA1083 97860
 10/01/94 DELAWARE CO RBA AT MUNCIE IN LYNN A LITTLER 8191 EAST CR 900N ALBANY, IN 47320 HKAY590 9786Y
 10/01/94 HOOSIER DUTCH RF AT MUNCIE IN GLENDA CUMMINGS 5735 SO EMERSON AVE INDIANAPOLIS, IN 46237-2522 JKS1509 11300
 10/01/94 HOOSIER DUTCH RF AT MUNCIE IN GLENDA CUMMINGS 5735 SO EMERSON AVE INDIANAPOLIS, IN 46237-2522 JKYS820 1130Y
 10/02/94 CARROLL CO 4-H RC AT WESTMINSTER MD DORI LYNNE THOMPSON 1925 JORDAN RETREAT Rd NEW WINDSOR, MD 21776-8519 JKYA193 9765Y
 10/02/94 WESTERN ME FAIR SHOW AT FRYEBURG ME DIANA WHITEHOUSE RR #2 Box 725 BRIDGTON, ME 04009 JKA1238 10670
 10/02/94 WESTERN ME FAIR SHOW AT FRYEBURG ME SHERRY GAMMON RR #2 Box 1178 PINHOOK Rd BRIDGTON, ME 04009 JKYA657 1067Y
 10/02/94 CUYAHOGA R & CBA AT BEREA OH EDWARD YOUNG 6108 HILLSIDE Rd INDEPENDENCE, OH 44131 AKA1072 11170
 10/02/94 CUYAHOGA R & CBA AT BEREA OH EDWARD YOUNG 6108 HILLSIDE Rd INDEPENDENCE, OH 44131 AKYA585 1117Y
 10/02/94 MIAMI VALLEY RC AT GREENVILLE OH ELLEN WICK 5474 St Rt 721 BRADFORD, OH 45308 HJA309 12210
 10/02/94 MIAMI VALLEY RC AT GREENVILLE OH ELLEN WICK 5474 St Rt 721 BRADFORD, OH 45308 HJYA182 1221Y
 10/08/94 TWIN COUNTY RBA AT MICHIGAN MARIANNE KNEPP ROUTE 4 Box 4919 GRAYLING, MI 49738 JKA274 98320
 10/08/94 TWIN COUNTY RBA AT MICHIGAN MARIANNE KNEPP ROUTE 4 Box 4919 GRAYLING, MI 49738 JKYA127 9832Y
 10/08/94 BORDERLINE RC AT CAMBRIDGE MN SANDY LARSON 13940 St CROIX Tr N STILLWATER, MN 55082 HKA1026 98680
 10/08/94 BORDERLINE RC AT CAMBRIDGE MN SANDY LARSON 13940 St CROIX Tr N STILLWATER, MN 55082 HKYA569 9868Y
 10/08/94 CENTRAL MISSISSIPPI R & CF AT RICHLAND MS CAPPY SCOTT 5119 TUCKER Rd VICKSBURG, MS 39180 JKA674 99660
 10/08/94 PHELPS CO RBA AT ROLLA MO SUE GILLISPIE HCR 71 Box 110 VIENNA, MO 65582 JKA533 10130
 10/08/94 PHELPS CO RBA AT ROLLA MO SUE GILLISPIE HCR 71 Box 110 VIENNA, MO 65582 JKYA268 1013Y
 10/08/94 FALLS CITIES R & CBA AT CLERMONT KY JOY M SMITH 8729 RUNNING FOX CIRCLE LOUISVILLE, KY 40291 JKA723 11400
 10/08/94 FALLS CITIES R & CBA AT CLERMONT KY JOY M SMITH 8729 RUNNING FOX CIRCLE LOUISVILLE, KY 40291 JKYA576 1140Y
 10/08/94 FALLS CITIES R & CBA AT CLERMONT KY JOY M SMITH 8729 RUNNING FOX CIRCLE LOUISVILLE, KY 40291 JKA1493 11410
 10/08/94 FALLS CITIES R & CBA AT CLERMONT KY JOY M SMITH 8729 RUNNING FOX CIRCLE LOUISVILLE, KY 40291 JKYA811 1141Y
 10/08/94 BORDERLINE RC AT CAMBRIDGE MN SANDY LARSON 13940 St CROIX Tr N STILLWATER, MN 55082 JKA1395 12250
 10/08/94 BORDERLINE RC AT CAMBRIDGE MN SANDY LARSON 13940 St CROIX Tr N STILLWATER, MN 55082 JKYA745 1225Y
 10/08/94 SOUTH FLORIDA RBA AT TAMPA FL DON OSER 9700 STARLINE DR DADE CITY, FL 33525 JKA1800 12450
 10/08/94 SOUTH FLORIDA RBA AT TAMPA FL RON TAYLOR 123 W THOMAS ST TAMPA, FL 33604 JKYA996 1245Y
 10/08/94 SOUTH FLORIDA RBA AT TAMPA FL JUDY HALL PO Box 243 BALM, FL 33503 JKA1801 12460
 10/09/94 LAKE GEUGA CO RB AT PAINESVILLE OH R MARSHALL 550 MENTOR AVE PAINESVILLE, OH 44077 HKA1471 10150
 10/09/94 LAKE GEUGA CO RB AT PAINESVILLE OH R MARSHALL 550 MENTOR AVE PAINESVILLE, OH 44077 HKYA800 1015Y
 10/09/94 WEST CENTRAL ILLINDIS RBA AT GALESBURG IL TIM RAKERS 719 W FREMONT GALESBURG, IL 61401 JKA296 10350
 10/09/94 WEST CENTRAL ILLINDIS RBA AT GALESBURG IL TIM RAKERS 719 W FREMONT GALESBURG, IL 61401 JKYA144 1035Y
 10/09/94 WEST CENTRAL ILLINDIS RBA AT GALESBURG IL TIM RAKERS 719 W FREMONT GALESBURG, IL 61401 JKS1191 10360
 10/09/94 WEST CENTRAL ILLINDIS RBA AT GALESBURG IL TIM RAKERS 719 W FREMONT GALESBURG, IL 61401 JKYS631 1036Y
 10/09/94 BUNNY BOOSTERS 4-H YOUTH RC AT CLARINDA IA BETH WAGONER R 2 Box 77 CLARINDA, IA 51632 JKA613 11810
 10/09/94 BUNNY BOOSTERS 4-H YOUTH RC AT CLARINDA IA BETH WAGONER R 2 Box 77 CLARINDA, IA 51632 JKYA314 1181Y
 10/09/94 CENTRAL CT R & CBA INC AT NORTH HAVEN CT INA MAE SCHMIDT 4 BISHOP ST NORTH HAVEN, CT 06473 JJA953 12830
 10/09/94 CENTRAL CT R & CBA INC AT NORTH HAVEN CT INA MAE SCHMIDT 4 BISHOP ST NORTH HAVEN, CT 06473 JJA500 1283Y
 10/15-16/94 KANSAS STATE RBA AT HUTCHINSON KS CLARENCE W LINSEY 316 SOUTH MAHAFFIE OLATHE, KS 66061 JKA1137 11260
 10/15-16/94 KANSAS STATE RBA AT HUTCHINSON KS CLARENCE W LINSEY 316 SOUTH MAHAFFIE OLATHE, KS 66061 JKYA605 1126Y
 10/15/94 HOOSIER DUTCH RF/MIDWEST DUTCH CLASSIC AT FT WAYNE IN GLENDA CUMMINGS 5735 SO EMERSON AVE INDIANAPOLIS, IN 46237-2522 JKS824 99010
 10/15/94 HOOSIER DUTCH RF/MIDWEST DUTCH CLASSIC AT FT WAYNE IN GLENDA CUMMINGS 5735 SO EMERSON AVE INDIANAPOLIS, IN 46237-2522 JKYS422 9901Y
 10/15/94 CENTRAL LOUISIANA RB AT ALEXANDRIA LA PAT DUJAY 120 HUDSON LANE PINEVILLE, LA 71360 HKA1991 99670
 10/15/94 BERKS CO R & CBA AT LEESPORT PA ALLEN HARTRANFT 11 W PENN AVE ROBESONIA, PA 19551 HKA1688 10410
 10/15/94 CENTRAL MI RBA AT CHARLOTTE MI JUANITA CARPENTER 14494 GODDARD Rd LAKE ODESSA, MI 48849-9412 JKA753 11290
 10/15/94 CENTRAL MI RBA AT CHARLOTTE MI JUANITA CARPENTER 14494 GODDARD Rd LAKE ODESSA, MI 48849-9412 JKYA396 1129Y
 10/15/94 NORTHERN PLAINS RBA AT WEST FARGO ND PHYLLIS PRITCHARD 10105 32ND St S FARGO, ND 58104 HKA581 11790

EXPIRING MEMBERS

SILSETH, CHRISTI RR 1 Box 75 HAVANNA, ND 58043 07/02/94
 SHORT, VALDINE 208-2 AV SE GEN DEL LANGDON ALBERTA CANADA T0J 1X0, 07/05/94
 PAISLEY, MICHAEL W & JACALA M 2123 MYRTLE AVE ZANESVILLE, OH 43701 07/06/94
 FLEMING, DALE & JOSEPHINE PO Box 133 GREENVILLE, KY 42345 07/06/94
 HOBMEIER, KAREN AIRPORT RD PO Box 114 HANCOCK, MI 49930 07/06/94
 SMITH, ADAM JAMES 336 SEVILLE RD WADSWORTH, OH 44281 07/07/94
 ELSTON, BRANDON 528 E 550 RD OVERBROOK, KS 66524-8819 07/07/94
 PALEY, W J (BILL) THE WARREN MILLRIG RD WISTON-BY-BIGGAR LANARKSHIRE, UK ML12 6HT 07/0

ANDERSON, BETH 1424 AHLSTROM HOLLOW DR LANSING, IA 52151 07/08/94
 UECKER, SUSAN & ROBERT 7825 WESTERN AVENUE CEDARBURG, WI 53012 07/09/94
 SAULN, ARIEL 957 ARMACOST RD SAN DIEGO, CA 92164 07/09/94
 FABARES, SANDERS 8907 ROCKET RIDGE RD LAKESIDE, CA 92040 07/09/94
 ZEIGLER, JENNIFER 2126 BOUNDRAY AVE RAMONA, CA 92065 07/09/94
 SCHLIEP, KELLI PO Box 98 SANTA MARGARITA, CA 93453 07/09/94
 TOTH, JULIE 447 PLOMO CT ARROYO GRANDE, CA 93420 07/09/94
 SELKIRK, CLAY HCR 74 SANTA RITA RD CAYUCOS, CA 93430 07/09/94
 BATHE, BRIAN 2739 LOPEZ DR ARROYO GRANDE, CA 93420 07/09/94
 MORGAN, JUSTIN 3711 ALISOS RD ARROYO GRANDE, CA 93420 07/09/94
 MCGRAY, DONALD 606 E HERMOSA SANTA MARIA, CA 93454 07/09/94
 ERDEN, ASHLEY 1273 LITTLE MORRO CREEK MORRO BAY, CA 93442 07/09/94
 ANTON, JENNIFER 4511 TITAN AVE LOMPPOO, CA 93436 07/09/94
 MORGAN, SHIRLYN 3711 ALISOS RD ARROYO GRANDE, CA 93420 07/09/94
 ROBERTS, JENNIFER 946 VISTA COLLADOS SAN LUIS OBISPO, CA 93405 07/09/94
 MARTINEZ, NICOLE 569 BAKEMAN LANE ARROYO GRANDE, CA 93420 07/09/94
 SINCLAIR, JAIME 1224 PATTERSON RD SANTA MARIA, CA 93455 07/09/94
 SEITZ, ROSLYN 350 ESTUARY WAY GROVER BEACH, CA 93433 07/09/94
 VAN HOORN, STACY 8907 MEMORY TRAIL WONDER LAKE, IL 60097 07/10/94
 GLENN, BONNIE R 853 CHICORA RD CHICORA, PA 16025 07/13/94
 DUNNING, KATHY A 1153 CROWLEY AVE SANTA CLARA, CA 95051 07/14/94
 LITTLEPAGE, KATY 141 1ST RD NE FAIRFIELD, MT 59436 07/15/94
 BOGAN, KEVIN & VICKI 1033 N STAR RT 72 SABINA, OH 45169 07/16/94
 FENSKY, SHORTY RR #1 THORSBY ALBERTA CANADA T0C 2P0, 07/17/94
 NEUMAN, CAROL RR#1 THORSBY ALBERTA CANADA T0C 2P0, 07/17/94
 CROUCH, RUSSELL RR #2 BOX 109 MALVERN, IA 51551 07/18/94
 WALDO, SHASTA 10 BROOKVIEW ACRES SPEARFISH, SD 57783 07/18/94
 GITTLEMAN, JESSICA MAE 19 POPLAR PL FANWOOD, NJ 07023 07/19/94
 BAKER, TIMOTHY 383 E TILSON W SALEM, WI 54669 07/20/94
 SICA, SAM & JOAN 5 PINERIDGE AVE MIDDLETOWN, NJ 07748 07/22/94
 SICA, JEANNE MARIE 5 PINERIDGE AVE MIDDLETOWN, NJ 07748 07/22/94
 SICA, SAMANTHA 5 PINERIDGE AVE MIDDLETOWN, NJ 07748 07/22/94
 WISE, BUTCH 8633 FLICK RD TIFF CITY, OH 45371 07/23/94
 MILLWARD, KARRI 46544 TR 285 COSHOCTON, OH 43812 07/23/94
 BILLUPS, ROCKY C/O 93 ONEY AVE HUNTINGTON, WV 25705 07/24/94
 WEIERSHEUSER, JEFF 1104 ISETT MUSCATINE, IA 52761 07/24/94
 WEIERSHEUSER, TAMBER 1104 ISETT MUSCATINE, IA 52761 07/24/94
 HOLLOWAY, DAVID B 3052 NE LINCOLN HILLSBORO, OR 97124 07/24/94
 McMURRAY, JEAN 232 EAST SOUTH ST HILLSBORO, OH 45133 07/25/94
 MURSKO, EDWIN 66 ANDERSON AVE WEST HAVEN, CT 06516 07/26/94
 VAN BUREN, ROBERT PO Box 292 WAUNA, WA 98395-9998 07/27/94
 SWAHN, JR., PATRICIA B & THOMAS W RR #1 BOX 196A TUNBRIDGE, VT 05077-9734 07/29/94
 WITTMER, JAMIE RR 2 BOX 50A MUSCATINE, IA 52761 07/29/94
 HAYHOW, DR CHRIS & JOHNORA 5977 SHADY LANE NAZARETH, PA 18064-8643 07/31/94
 JACKSON, DON & MARTHA 611 VIEW ST BOX 346 TABOR, IA 51653 08/01/94
 HOAGLAND-WETZEL, BETTY PO Box 14712 MINNEAPOLIS, MN 55414 08/01/94
 MASSERANT, JULIE LYNN 5717 TROMBLEY RD NEWPORT, MI 48166 08/01/94
 MASSERANT, LAURIE RENEE 5717 TROMBLEY RD NEWPORT, MI 48166 08/01/94
 WOLTER, MATTHEW RT 1 COUNTY HWY CC BOX 384 PRINCETON, WI 54968 08/03/94

EXPIRING MEMBERS

KONECNE, ALLEN RR 1 Box 40B DIAGONAL, IA 50845 08/03/94
 SIGURDSON, KENT & LAURIE 856 WEST CHRISTY LN POWELL, WY 82435 08/05/94
 RUTTER, CASE Box 453 COLES MILL RD FRANKLINVILLE, NJ 08322-9708 08/06/94
 GOTTSCHALK, MEGAN F. 6750 N VAN DYKE PORT AUSTIN, MI 48467 08/10/94
 TERRY, SHELLY J 408-A Hwy 395 N COLVILLE, WA 99114 08/10/94
 DAY, RENEE HCR 1 Box 126 KREIG ROAD CAIRO, NY 12413 08/11/94
 WILSON, SANDRA Box 692 STONY PLAIN ALBERTA CANADA T0E 2G0, 08/11/94
 HAMM, RAYMOND SHANE 3378 HILLMAN FORD RD MORRAL, OH 43337 08/12/94
 RONCELLI, JANET RT 1 Box 230JJ LEXINGTON, Mo 64067 08/14/94
 EGLOFF, CARL J 21345 ANN RITA DR BROOKFIELD, WI 53045 08/16/94
 RECKKER, LAURA 5575 WILDCAT RD NORTH STREET, MI 48049 08/16/94
 FREESTONE, MEGAN 3298 NORTH 3800 EAST HANSEN, Id 83334 08/16/94
 BURT, JANE A 980 WEST FIVE POINT HWY CHARLOTTE, MI 48813 08/17/94
 BAIRD BURBACK, JANET 19665B HALE AVE MORGAN HILL, CA 95037 08/18/94
 JONES, COLIN RR 1 Box 193 NEVADA, IA 50201 08/18/94
 BARRY, JENNIFER 965 SUNSET DR DIXON, CA 95620 08/19/94
 MCRAE, LESLIE 46 PRESTON AVE SARNIA ONTARIO CANADA N7S 1L6, 08/21/94
 HAMERSLEY, GORDON & MARILYN 24931 WOODFIELD SCHOOL RD GAITHERSBURG, Md 20882 08/23/94
 SUDDUTH, ERIC 611 E CLINTON HOBBS, NM 88240 08/23/94
 LONG, LARRY 14021 - 113TH AVE DAVENPORT, IA 52804 08/23/94
 MILLER, WALTER & SHIRLEY 2634 SCHEETZ ST YOUNGSTOWN, OH 44509 08/24/94
 POWELL, KIMBERLY 228 COHASSETT DR HERMITAGE, PA 16148 08/24/94
 BREWER, MARGIE & RAY PO Box 85 SALUDA, SC 29138 08/25/94
 CALDWELL JR, ROBERT L RT .11 Box 12 MOORESVILLE, NC 28115 08/25/94
 JERNIGAN, T L RT 4 Box 94 FAIRMONT, NC 28340 08/25/94
 LINDAU, LORI E 15519 ADAMS ST WEEPING WATER, NE 68463 08/25/94
 REEVES, MICHELLE 4617 ORCHARD HTS RD NW SALEM, OR 97304 08/27/94
 MILLER, IVAN Box 25 521 WEST ST MAQUON, IL 61458 08/27/94
 REEVES, NOELLE 4617 ORCHARD HTS RD NW SALEM, OR 97304 08/29/94
 WHITWER, JULIE RR 2 Box 164 TILDEN, NE 68781 08/30/94
 O'BRIEN, KELLY 24023 26TH DR SE BOTHELL, WA 98021-6521 08/31/94
 DUNAR, EDWARD 915 W RANCHITO LANE MEQUON, WI 53092 09/01/94
 ADDISON, CONALL Box 356 ST JOHN, Ks 67576 09/01/94
 BENGTSON, ERIK A RT 1 Box 95 LEWISTON, MN 55952-9720 09/01/94
 WENGER, NICK RT 1 Box 93 MINNESOTA CITY, MN 55959 09/02/94
 REHARK, KATIE 800 MAGIE AVE FAIRFIELD, OH 45014 09/02/94
 HINKLE, JASON RONALD PO Box 5074 MARYVILLE, Tn 37802-5074 09/02/94
 LOOMIS, TAMMY 399 61ST ST NW ALBUQUERQUE, NM 87105 09/04/94
 BARFIELD, RHONDA 2500 HAYES RD CONROE, Tx 77385 09/04/94
 ROSNIK, JODY 7375 N ALPINE DR PARKER, Co 80134 09/04/94
 SUTTON, ELIZABETH PO Box 413 MILLS, WY 82644 09/05/94
 ANDERSON, MANDY 301 E CONANT ST PORTAGE, WI 53901 09/05/94
 RUDOLPH, JOHN 117 S CIRCLE DR ISLAND LAKE, IL 60042 09/08/94
 FINKENBINDER, STEVE RT 3 Box 157 PONTIAC, IL 61764 09/08/94
 FINKENBINDER, DEVIN RT 3 Box 157 PONTIAC, IL 61764 09/08/94
 SNYDER, LARRY & BEV 9441 W 1300 N DEMOTTE, IN 46310 09/09/94
 SUGALSKI, RICHARD & KAREN 153 OLD WESTMINSTER RD HUBBARDSTON, MA 01452 09/10/94
 SUGALSKI, DEREK 153 OLD WESTMINSTER RD HUBBARDSTON, MA 01452 09/10/94
 DEPLAZES, NEIL 11656 280TH ST E WEBSTER, Mn 55088 09/11/94
 STEWARDSON, MARK 279 RON ALLEN DR. DORCHESTER ONTARIO CANADA, NOL 1G1 09/11/94
 HOLMAN, DUANE 714 TEAL DR GRAND PRAIRIE, Tx 75052 09/11/94
 GILMORE, JACK 1023 N FULBRIGHT SPRINGFIELD, Mo 65802 09/12/94
 SMITH, JIM & BRENDA 336 SEVILLE RD WADSWORTH, OH 44281 09/12/94
 SCHWARTZ, DANNY 14354 PEBBLE CREEK DR LOCKPORT, IL 60441 09/13/94
 HODGSON, MRS M I 1 REDCAR RD/DUNSDALE NR GUISBOROUGH CLEVELAND ENGLAND, TS14 6RH 09/15/94
 ALLEBACH, RICHARD & SYLVIA 2871 N St Rt 235 ST PARIS, OH 43072 09/18/94
 BAIRD, BARBARA 19665B HALE AVE MORGAN HILL, CA 95037 09/20/94

OPEN SWEEPSTAKES STANDINGS

Reports Rec'd as of 6-1-94

<u>Exhibitor</u>	<u>State</u>	<u># of Shows</u>	<u>Points</u>
1. Ricky Wood	VA	15	4222
2. Charles Christ	AZ	13	3685
3. Wenton Carlton	AZ	14	3679
4. J & F Schettler	CA	9	3068
5. Kevin Hooper	OH	7	2902
6. K & D Emerson	NY	5	2555
7. John Eubank	CA	14	2475
8. Joanne Purpus	CA	10	2365
9. F & K Mullinax	NC	8	2208
10. Lynn Shaw	IN	2	2166
11. G & J Dobson	CA	11	2123
12. Alan Miller	IN	9	2113
13. Ed Hewson	IN	7	2053
14. Valerie Dahl	CT	11	1862
15. Dana Dowd	IA	6	1853
16. Linda Anderson	NC	13	1677
17. M & J Mills	TX	8	1564
18. L & D Bengston	MN	8	1553
19. Robin Hessick	OH	6	1546
20. Anthony Micallef	MI	3	1475

YOUTH SWEEPSTAKES STANDINGS

Reports Rec'd as of 6-1-94

<u>Exhibitor</u>	<u>State</u>	<u># of Shows</u>	<u>Points</u>
1. Robert Woods	IL	8	1456
2. Derek Sugalski	MA	3	1370
3. Jeremy Hunzie	CA	7	1215
4. S & M Snyder	IN	4	1164
5. Mandy Anderson	WI	6	1096
6. Nick Wenger	MN	6	952
7. Lindsea Coy	MA	7	793
Amy Regelin	MI	7	793
9. Colin Jones	IA	4	766
10. Abby Mullinax	NC	3	737
11. Jenica Hurst	IN	3	662
12. Kim Jacobs	MA	2	577
13. Karen Schomaker	OH	4	574
14. Amber Miskell	CA	6	572
15. Beau Williamson	CA	4	522
16. Jennifer Harbin	OH	2	521
17. Tony Larson	MN	8	509
18. John Hayhow	PA	1	502
19. Jess McCune	IA	2	489
20. Kate Williamson	CA	3	444

OPEN DISTRICT STANDINGS

YOUTH DISTRICT STANDINGS

DISTRICT 1

1. Ricky Wood	VA	4222
2. Kevin Hooper	OH	2902
3. K & D Emerson	NY	2555
4. F & K Mullinax	NC	2208
5. Valerie Dahl	CT	1862
6. Linda Anderson	NC	1677
7. Robin Hessick	OH	1546
8. Wayne MacKinnon	MA	1123
9. Rebecca Zimmer	NY	1019
10. Ed Manning	FL	1011

DISTRICT 2

1. Lynn Shaw	IN	2166
2. Alan Miller	IN	2113
3. Ed Hewson	IN	2053
4. Dana Dowd	IA	1853
5. L & D Bengtson	MN	1553
6. Anthony Micallef	MI	1475
7. R & K Rabbitry	IN	1382
8. Robert Worden	IN	1346
9. D & J Fleming	KY	1225
10. Roger Guetschow	WI	977

DISTRICT 3

1. Charles Christ	AZ	3685
2. Wenton Carlton	AZ	3679
3. J & F Schettler	CA	3068
4. John Eubank	CA	2475
5. Joanne Purpus	CA	2365
6. G & J Dobson	CA	2123
7. M & J Mills	TX	1564
8. Tracy Robinson	CA	1268
9. Bob Bergene	KS	1082
10. Rebecca Simons	IA	1079

DISTRICT 1

1. Derek Sugalski	MA	1370
2. Lindsea Coy	MA	793
3. Abby Mullinax	NC	737
4. Kim Jacobs	MA	577
5. Karen Schomaker	OH	574
6. Jennifer Harbin	OH	521
7. John Hayhow	PA	502
8. Jamie Ruggiero	PA	321
9. Jessica Gittleman	NJ	306
10. Adrienne Lamond	ME	264

DISTRICT 2

1. Robert Woods	IL	1456
2. S & M Snyder	IN	1164
3. Mandy Anderson	WI	1096
4. Nick Wenger	MN	952
5. Amy Regelin	MI	793
6. Colin Jones	IA	766
7. Jenica Hurst	IN	662
8. Tony Larson	MN	509
9. Jess McCune	IA	489
10. Wesley Freiberg	IA	393

DISTRICT 3

1. Jeremy Hunzie	CA	1215
2. Amber Miskell	CA	572
3. Beau Williamson	CA	522
4. Kate Williamson	CA	444
5. David Uchiyama	CA	419
6. April Worley	CA	351
7. Joy Keegan	CA	342
8. Patrick Bell	CA	311
9. B & T Lugo	CA	295
10. Julie Toth	CA	289

***** OPEN ***
SPECIAL WINNERS**

3-12-94	Kaw Valley RC	Best 4 Class	Bob Bergene
3-13-94	Great West. Lvstk Show	Best In Show	Beau Williamson
4-2-94	NE Tower on the Plains	Best In Show	E & T Bogart
4-23-94	Riverton RB	Best 4 Class	L. Sigurdson
5-1-94	Salt City RBA	Best In Show	E & T Bogart

***** YOUTH ***
SPECIAL WINNERS**

2-13-94	Lakeland RBA	Best In Show	Anderson's Rbts
2-20-94	Natividad 4-H RP	Best 4 Class	K. Williamson
3-12-94	Great West. Lvstk Show	Best Reserve	Beau Williamson
3-26-94	Central Valley RBA	Best In Show	Beau Williamson
4-17-94	Fairfield Co RBA	Best In Show	Lindsea Coy
4-23-94	Carolina Mountain RBA	Best In Show	Abby Mullinax
4-24-94	Central Wisconsin RBA	Best In Show	M & T Anderson
4-30-94	Hop To It RC	Best In Show	Nick Wenger

OPEN SHOW REPORTS

DATE: 8-6-93
 SHOW: Adams Ag Fair
 WHERE: Adams, MA
 JUDGE: E Szczpanek
 DUTCH: 36
 BOB: Blue JB NM
 BOS: Blue JD NM
 BLACK: 9 SB NM
 BLUE: 9 JB NM
 CHOC: 3 Eliminated
 GRAY: 6 SD Zimmer
 STEEL: 3 Eliminated
 TORT: 6 SD NM

DATE: 8-17-93
 SHOW: Zanesville RBA
 WHERE: Zanesville, OH
 JUDGE: J Frizzell
 DUTCH: 25
 BOB: Blue SD Paisley
 BOS: Choc JB Paisley
 BLACK: 12 SB Paisley
 BLUE: 4 SD Paisley
 CHOC: 8 JB Paisley
 TORT: 1 SB NM

DATE: 8-17-93
 SHOW: Zanesville RBA
 WHERE: Zanesville, OH
 JUDGE: J Frizzell
 DUTCH: 25
 BOB: Blue SD Paisley
 BOS: Choc JB Paisley
 BLACK: 12 SB Paisley
 BLUE: 4 SD Paisley
 CHOC: 8 JB Paisley
 TORT: 1 SB NM

DATE: 10-10-93
 SHOW: Zanesville RBA
 WHERE: Zanesville, OH
 JUDGE: M D'Amico
 DUTCH: 38
 BOB: Blue JB Hessick
 BOS: Choc JD Hessick
 BLACK: 15 SB Barton
 BLUE: 7 JB Hessick
 CHOC: 13 JD Hessick
 STEEL: 1 JB Hessick
 GRAY: 2 SD Barton

DATE: 1-15-94
 SHOW: Sonoma Marin RA
 WHERE: Santa Rosa, CA
 JUDGE: A Barr
 DUTCH: 136
 BOB: Gray SD NM
 BOS: Blue SB J&F Schettler
 BLACK: 39 SD Robinson
 BLUE: 36 JD Whalen
 CHOC: 22 JB J&F Schettler
 TORT: 13 JB J&F Schettler
 STEEL: 7 JD Bullis
 GRAY: 19 SD NM

DATE: 2-13-94
 SHOW: Lakeland RBA
 WHERE: Elkhorn, WI
 JUDGE: W Grebner
 DUTCH: 34
 BOB: Blue SB D&K Gates
 BOS: Blk SD S&R Uecker
 BLACK: 17 SB NM
 BLUE: 8 SB D&K Gates
 CHOC: 2 SB D&K Gates
 GRAY: 2 JD S&R Uecker
 STEEL: 3 SD S&R Uecker
 TORT: 2 JB S&R Uecker

DATE: 2-19-94
 SHOW: Falls Cities R&CBA
 WHERE: Elizabethtown, KY
 JUDGE: T Walsh
 DUTCH: 39
 BOB: Blk SB Campbell
 BOS: Blue SD Mueller
 BLACK: 18 SB Campbell
 BLUE: 10 SD Mueller
 CHOC: 5 JD D&J Fleming
 TORT: 5 SD D&J Fleming
 GRAY: 1 SB Campbell

DATE: 2-19-94
 SHOW: Falls Cities R&CBA
 WHERE: Elizabethtown, KY
 JUDGE: H Conrad
 DUTCH: 33
 BOB: Tort SD D&J Fleming
 BOS: Blk SB Bramble
 BLACK: 15 SB Bramble
 BLUE: 6 JD Campbell
 CHOC: 5 JD D&J Fleming
 TORT: 5 SD D&J Fleming
 GRAY: 2 SB Campbell

DATE: 2-19-94
 SHOW: Mountain Meadow R&CC
 WHERE: Nampa, ID
 JUDGE: A Barr
 DUTCH: 26
 ALL WINNERS NM

DATE: 2-19-94
 SHOW: Mountain Meadow R&CC
 WHERE: Nampa, ID
 JUDGE: T Keyes
 DUTCH: 31
 BOB: Tort JB NM
 BOS: Steel JD NM
 BLACK: 9 SB NM
 BLUE: 3 SB NM
 CHOC: 11 SB Corbeil
 TORT: 4 JB NM
 STEEL: 4 SB NM

DATE: 2-19-94
 SHOW: Olympic R&C Fanciers
 WHERE: Chehalis, WA
 JUDGE: B Peterson
 DUTCH: 12
 BOB: Blk SB NM
 BOS: Blue SD NM
 BLACK: 6 SB NM
 BLUE: 2 SD NM
 CHOC: 2 SB VanBuren
 TORT: 2 SD NM

DATE: 2/19-2/20/94
 SHOW: Pennsylvania State RBA
 WHERE: Lebanon, PA
 JUDGE: R Cota
 DUTCH: 37
 BOB: Blk SB Bradshaw
 BOS: Choc JD Dahl
 BLACK: 13 SB Bradshaw
 BLUE: 11 JB Bradshaw
 CHOC: 2 JD Dahl
 GRAY: 3 JD Dahl
 STEEL: 4 SD Dahl
 TORT: 4 SB Dahl

DATE: 2/19-2/20/94
 SHOW: Pennsylvania State RBA
 WHERE: Lebanon, PA
 JUDGE: F DelMastro
 DUTCH: 50
 BOB: Blue JB S Peters
 BOS: Steel SD Dahl
 BLACK: 17 SB Sartori
 BLUE: 15 JB S Peters
 CHOC: 7 JB P Peters
 GRAY: 3 JD Dahl
 STEEL: 4 SD Dahl
 TORT: 4 SD Dahl

DATE: 2-20-94
 SHOW: Peoria Area RBA
 WHERE: Peoria, IL
 JUDGE: I Miller
 DUTCH: 38
 BOB: Blue SD D&D Schwartz
 BOS: Blue SB D&D Schwartz
 BLACK: 17 SD D&D Schwartz
 BLUE: 4 SD D&D Schwartz
 CHOC: 7 SD K&L MacLeod
 TORT: 10 SD NM

DATE: 2-26-94
 SHOW: SW Missouri Hare Raisers
 WHERE: Webb City, MO
 JUDGE: R Gehr
 DUTCH: 1
 Winner NM

DATE: 2-26-94
 SHOW: Arizona State R&CBA
 WHERE: Douglas, AZ
 JUDGE: C Wickizer
 DUTCH: 24
 BOB: Choc JB Christ
 BOS: Tort SD Christ
 BLACK: 8 JB Brownson
 BLUE: 3 JD Christ
 CHOC: 4 JB Christ
 TORT: 9 SD Christ

DATE: 2-26-94
 SHOW: Rochester Area RC
 WHERE: Rochester, MN
 JUDGE: R Goedderz
 DUTCH: 64
 BOB: Tort SB D&D Dowd
 BOS: Blue SD D&D Dowd
 BLACK: 16 JB Bengtson's
 BLUE: 8 SB D&D Dowd
 CHOC: 12 SB D&D Dowd
 GRAY: 6 SD Ihrke/Reil
 STEEL: 8 SB Ihrke/Reil
 TORT: 14 SB D&D Dowd

OPEN SHOW REPORTS

DATE: 2-26-94
 SHOW: CA State R & CBA
 WHERE: Turlock, CA
 JUDGE: C Zemny
 DUTCH: 69
 BOB: Blk SD J&F Schettler
 BOS: Gray JB NM
 BLACK: 14 SD J&F Schettler
 BLUE: 20 SD Hunzie
 CHOC: 10 JB J&F Schettler
 TORT: 6 JD J&F Schettler
 STEEL: 7 JB J&F Schettler
 GRAY: 12 JB NM

DATE: 2-27-94
 SHOW: Cochise County RBA
 WHERE: Douglas, AZ
 JUDGE: T Thomas
 DUTCH: 54
 BOB: Choc SB Carlton
 BOS: Blk SD Christ
 BLACK: 14 SB Christ
 BLUE: 8 SB Carlton
 CHOC: 11 SB Carlton
 TORT: 13 SB Christ
 STEEL: 1 SD Carlton
 GRAY: 7 JB Carlton

DATE: 2-27-94
 SHOW: State Line RBA
 WHERE: Bowling Green, OH
 JUDGE: K Cunningham
 DUTCH: 56
 BOB: Blk SB Hessick
 BOS: Steel SD Hooper
 BLACK: 14 SB Hessick
 BLUE: 10 SB R&J Billups
 CHOC: 8 JD Hooper
 TORT: 13 SD D Nixon
 STEEL: 6 SD Hooper
 GRAY: 5 JD Hooper

DATE: 2-27-94
 SHOW: Western IL RBA
 WHERE: Galva, IL
 JUDGE: M Avesing
 DUTCH: 37
 BOB: Blue SB D&D Schwartz
 BOS: Blk SD Kral
 BLACK: 20 SD Kral
 BLUE: 5 SB D&D Schwartz
 CHOC: 5 JB Kral
 TORT: 7 JD NM

DATE: 2-27-94
 SHOW: Eastern Maine RBA
 WHERE: Carmel, ME
 JUDGE: L Benoit
 DUTCH: 11
 ALL WINNERS NM

DATE: 2-27-94
 SHOW: Cochise RB
 WHERE: Douglas, AZ
 JUDGE: B Kingsbury
 DUTCH: 65
 BOB: Tort JD Christ
 BOS: Blk JB Christ
 BLACK: 15 JB Christ
 BLUE: 7 SB Carlton
 CHOC: 10 SB Carlton
 TORT: 14 JD Christ
 STEEL: 5 SD Carlton
 GRAY: 14 SB Carlton

DATE: 3/4-3/6/94
 SHOW: Michigan State RBA
 WHERE: E Lansing, MI
 JUDGE: J Weltevreden
 DUTCH: 75
 BOB: Blk JB McKinley
 BOS: Blue SD Micallef
 BLACK: 18 JB McKinley
 BLUE: 18 SD Micallef
 CHOC: 12 SD Micallef
 TORT: 22 SB McKinley
 GRAY: 5 SB Storey

DATE: 3-5-94
 SHOW: Sandhills RBA
 WHERE: Midland, TX
 JUDGE: C Hooks
 DUTCH: 10
 BOB: Tort SB McManus
 BOS: Blue SD NM
 BLACK: 1 JB NM
 BLUE: 7 SB McManus
 TORT: 2 SB McManus

DATE: 3-5-94
 SHOW: Sandhills RBA
 WHERE: Midland, TX
 JUDGE: C Alexander
 DUTCH: 10
 BOB: Blue SB McManus
 BOS: Blue SD NM
 BLACK: 1 JB NM
 BLUE: 7 SB McManus
 TORT: 2 SB McManus

DATE: 3-5-94
 SHOW: Central Florida RBA
 WHERE: Orlando, FL
 JUDGE: D Cardinal
 DUTCH: 21
 BOB: Gray SB Dallison
 BOS: Blk JD Dallison
 BLACK: 9 JD Dallison
 BLUE: 2 JD Dallison
 CHOC: 1 JB Savitz
 TORT: 3 SD Manning
 STEEL: 2 JB Manning
 GRAY: 4 SB Dallison

DATE: 3-5-94
 SHOW: Southern Indiana RBA
 WHERE: Charlestown, IN
 JUDGE: T Fender
 DUTCH: 32
 BOB: Blk SD Mueller
 BOS: Blue JB NM
 BLACK: 14 SD Mueller
 BLUE: 9 JB NM
 CHOC: 1 JD D&J Fleming
 TORT: 4 SD D&J Fleming
 STEEL: 1 JD Bramble
 GRAY: 3 JB Bramble

DATE: 3-5-94
 SHOW: Hunt Co RBA
 WHERE: Greenville, TX
 NO DUTCH SHOWN

DATE: 3-5-94
 SHOW: Southern Indiana RBA
 WHERE: Charlestown, IN
 JUDGE: B Kingsbury
 DUTCH: 33
 BOB: Blk SB Campbell
 BOS: Blue SD Mueller
 BLACK: 14 SB Campbell
 BLUE: 10 SD Mueller
 CHOC: 1 SD D&J Fleming
 TORT: 4 JB Thomas
 STEEL: 1 JD Bramble
 GRAY: 3 SD Bramble

DATE: 3-5-94
 SHOW: Central Florida RBA
 WHERE: Orlando, FL
 JUDGE: B VanVelden
 DUTCH: 31
 BOB: Tort SB Savitz
 BOS: Blk JD NM
 BLACK: 15 JD NM
 BLUE: 4 JB NM
 CHOC: 3 JB Savitz
 TORT: 3 SB Savitz
 STEEL: 2 JB Manning
 GRAY: 4 JB Savitz

DATE: 3-5-94
 SHOW: SE Washington RBC
 WHERE: Asotin, WA
 JUDGE: F Roberts
 DUTCH: 20
 BOB: Steel SD NM
 BOS: Blk SB Houseman
 BLACK: 5 SB Houseman
 BLUE: 7 SB NM
 CHOC: 3 SB NM
 GRAY: 3 SB Houseman
 STEEL: 1 SD NM
 TORT: 1 SB NM

DATE: 3-5-94
 SHOW: Noble Co RFC
 WHERE: Columbia City, IN
 JUDGE: Dr T Reed
 DUTCH: 94
 BOB: Blk JD Worden
 BOS: Steel JB Miller
 BLACK: 36 JD Worden
 BLUE: 7 JB R&K Rabbitry
 CHOC: 13 JB Snyder
 TORT: 17 JB NM
 STEEL: 8 SD Miller
 GRAY: 13 SD Miller

DATE: 3-5-94
 SHOW: NW Georgia C & RC
 WHERE: Dalton, GA
 JUDGE: C Hayhow
 DUTCH: 33
 BOB: Blk SB Anderson
 BOS: Blk SD Schultheis
 BLACK: 14 SB Anderson
 BLUE: 8 SB Wood
 CHOC: 4 JD Wood
 GRAY: 1 JB Wood
 STEEL: 1 SB Wood
 TORT: 5 SB Wood

OPEN SHOW REPORTS

DATE: 3-5-94
 SHOW: Union RBA
 WHERE: Monroe, NC
 JUDGE: B Rice
 DUTCH: 24
 BOB: Blk SB F&K Mullinax
 BOS: Blk SD F&K Mullinax
 BLACK: 5 SB F&K Mullinax
 BLUE: 3 JB F&K Mullinax
 CHOC: 4 JD F&K Mullinax
 TORT: 5 SB F&K Mullinax
 STEEL: 3 SB F&K Mullinax
 GRAY: 4 JB R&M Brewer

DATE: 3-5-94
 SHOW: NW Georgia C & RC
 WHERE: Dalton, GA
 JUDGE: P Delashmitt
 DUTCH: 49
 BOB: Blk SB Anderson
 BOS: Blk SD Schultheis
 BLACK: 17 SB Anderson
 BLUE: 11 SD McKenna
 CHOC: 7 JD Wood
 GRAY: 3 JD NM
 STEEL: 5 SB Wood
 TORT: 6 JB Wood

DATE: 3-5-94
 SHOW: NW Georgia C & RC
 WHERE: Dalton, GA
 JUDGE: J Hardin
 DUTCH: 49
 BOB: Blk JB Simmons
 BOS: Blue SD Simmons
 BLACK: 17 JB Simmons
 BLUE: 12 SD Simmons
 CHOC: 7 SB McKenna
 GRAY: 3 JB Wood
 STEEL: 4 JD NM
 TORT: 6 SB Wood

DATE: 3-6-94
 SHOW: York Co R&CBA
 WHERE: Bair, PA
 JUDGE: H Keller
 DUTCH: 26
 BOB: Blue SD Joyce
 BOS: Blk JB Joyce
 BLACK: 8 JB Joyce
 BLUE: 4 SD Joyce
 CHOC: 3 SB McNamara
 STEEL: 3 SD L&P Hailey
 GRAY: 8 SB Stoudt

DATE: 3-6-94
 SHOW: Tri County RBA
 WHERE: Hanson, MA
 JUDGE: M Cavacco
 DUTCH: 22
 BOB: Blk JB MacKinnon
 BOS: Blk JD Zimmer
 BLACK: 11 JB MacKinnon
 BLUE: 4 SB NM
 GRAY: 2 JD Zimmer
 TORT: 5 JB Sugalski

DATE: 3-12-94
 SHOW: Saquaro State RBA
 WHERE: Phoenix, AZ
 JUDGE: D Carnahan
 DUTCH: 6
 BOB: Blk JB Brownson
 BOS: Tort SD Brownson
 BLACK: 1 JB Brownson
 TORT: 5 SD Brownson

DATE: 3-12-94
 SHOW: Gaston RBA
 WHERE: Denver, NC
 JUDGE: M D'Amico
 DUTCH: 37
 BOB: Gray SD F&K Mullinax
 BOS: Blue JB F&K Mullinax
 BLACK: 16 JB F&K Mullinax
 BLUE: 4 JB F&K Mullinax
 CHOC: 1 JD F&K Mullinax
 TORT: 10 SB F&K Mullinax
 STEEL: 4 SB F&K Mullinax
 GRAY: 2 SD F&K Mullinax

DATE: 3-12-94
 SHOW: San Fernando Valley RBA
 WHERE: Lake View Terrace, CA
 JUDGE: D Berdechowski
 DUTCH: 43
 BOB: Blk SB Keegan
 BOS: Blue JD Dobson
 BLACK: 18 SB Keegan
 BLUE: 13 JB Dobson
 GRAY: 7 JB Miskell
 TORT: 5 JB Dobson

DATE: 3-12-94
 SHOW: Great W. Lvstk Show
 WHERE: Tulare, CA
 JUDGE: B Meyer
 DUTCH: 18
 BOB: Blue SB S&D Williamson
 BOS: Blk JD NM
 BLACK: 7 SB NM
 BLUE: 5 SB S&D Williamson
 GRAY: 1 JD Robinson
 TORT: 5 SB McEwen

DATE: 3-12-94
 SHOW: Music City RBA
 WHERE: Murfreesboro, TN
 JUDGE: J Hardin
 DUTCH: 18
 BOB: Blue SD Anderson
 BOS: Blk SB NM
 BLACK: 9 SB NM
 BLUE: 7 SD Anderson
 CHOC: 1 SB McKenna
 TORT: 1 SB McKenna

DATE: 3-12-94
 SHOW: Music City RBA
 WHERE: Murfreesboro, TN
 JUDGE: R Brewer
 DUTCH: 15
 BOB: Blue SD Anderson
 BOS: Blk SB Anderson
 BLACK: 8 SB Anderson
 BLUE: 5 SD Anderson
 CHOC: 1 SB McKenna
 TORT: 1 SB DQ

DATE: 3-12-94
 SHOW: Kaw Valley RC
 WHERE: Gardner, KS
 JUDGE: M Cole
 DUTCH: 48
 BOB: Blue JB Bergene
 BOS: Choc JD Bergene
 BLACK: 22 JD Bogart
 BLUE: 14 JB Bergene
 CHOC: 6 JD Bergene
 GRAY: 3 SD Crook
 STEEL: 2 SD Caldwell
 TORT: 1 SB Bergene

DATE: 3-12-94
 SHOW: Upper Midwest Dutch RC
 WHERE: Jefferson, WI
 JUDGE: B Koch
 DUTCH: 73
 BOB: Blue SB K&D Gates
 BOS: Blue SD Guetschow
 BLACK: 22 SB K&D Gates
 BLUE: 15 SB K&D Gates
 CHOC: 11 SB K&D Gates
 TORT: 16 SD Guetschow
 STEEL: 5 JD R&S Uecker
 GRAY: 4 JB Guetschow

DATE: 3-12-94
 SHOW: Long Island RBA
 WHERE: Franklin Square, NY
 JUDGE: G Fellers
 DUTCH: 42
 BOB: Blk SD Dahl
 BOS: Blue SB Bradshaw
 BLACK: 17 SD Dahl
 BLUE: 8 SB Bradshaw
 CHOC: 2 SD Dahl
 TORT: 7 JB Zimmer
 STEEL: 3 SD Dahl
 GRAY: 5 JB Dahl

DATE: 3-13-94
 SHOW: Ohio Valley RBA
 WHERE: Hamilton, OH
 JUDGE: T Fender
 DUTCH: 60
 BOB: Blk SD Hooper
 BOS: Blk SB K&V Bogan
 BLACK: 13 SD Hooper
 BLUE: 21 SD Shaw
 CHOC: 7 JD Hooper
 GRAY: 7 SB Hooper
 STEEL: 4 SD Hooper
 TORT: 8 JB Hooper

DATE: 3-13-94
 SHOW: Carroll Co R&CBA
 WHERE: Westminster, MD
 JUDGE: B Rice
 DUTCH: 31
 BOB: Tort JB Wood
 BOS: Blue SD Joyce
 BLACK: 5 SB Joyce
 BLUE: 8 SB Pugh
 CHOC: 7 JD Wood
 TORT: 4 JB Wood
 STEEL: 4 SB Wood
 GRAY: 3 JB Wood

OPEN SHOW REPORTS

DATE: 3-13-94
 SHOW: Great W. Lvstk Show
 WHERE: Tulare, CA
 JUDGE: F McGehee
 DUTCH: 37
 BOB: Blue JD B/Williamson
 BOS: Blue SB Hunzie
 BLACK: 8 SD NM
 BLUE: 12 JD B/Williamson
 CHOC: 7 JB Uchiyama
 GRAY: 5 SB K/Williamson
 STEEL: 2 SD K/Williamson
 TORT: 3 SD K/Williamson

DATE: 3-13-94
 SHOW: Ontario Area RBA
 WHERE: Pomona, CA
 JUDGE: E Hord
 DUTCH: 41
 BOB: Blk SD Purpus
 BOS: Gray SB J/Eubank
 BLACK: 17 SD Purpus
 BLUE: 5 JD Dobson
 GRAY: 7 JD Purpus
 STEEL: 6 JD Purpus
 TORT: 6 SB Purpus

DATE: 3-13-94
 SHOW: Badger RBA
 WHERE: Jefferson, WI
 JUDGE: G Gillispie
 DUTCH: 47
 BOB: Blue SB D&K Gates
 BOS: Tort SD Guetschow
 BLACK: 23 JD Hawkeye Dutch
 BLUE: 9 SB D&K Gates
 CHOC: 5 SB D&K Gates
 GRAY: 2 JB Guetschow
 STEEL: 3 JD R&S Ueker
 TORT: 5 SD Guetschow

DATE: 3-13-94
 SHOW: Butler Co RBA
 WHERE: Butler, PA
 JUDGE: D Gehr
 DUTCH: 6
 ALL WINNERS NM

DATE: 3/17-18/94
 SHOW: Maricopa Co Fair
 WHERE: Phoenix, AZ
 JUDGE: ???
 DUTCH: 33
 BOB: Blue JD Christ
 BOS: Blk SB Christ
 BLACK: 8 SB Christ
 BLUE: 10 JD Christ
 CHOC: 8 SD Christ
 TORT: 7 SD Christ

DATE: 3-19-94
 SHOW: El Paso RA
 WHERE: Las Cruces, NM
 JUDGE: M Crawford
 DUTCH: 35
 BOB: Blue SB NM
 BOS: Choc JD NM
 BLACK: 5 SB NM
 BLUE: 3 SB NM
 CHOC: 11 SB Carlton
 GRAY: 4 JB Carlton
 STEEL: 1 SD Carlton
 TORT: 11 SB Carlton

DATE: 3-19-94
 SHOW: Capital City RBA
 WHERE: Frankfort, KY
 JUDGE: R Mauck
 DUTCH: 23
 BOB: Blue JD Campbell
 BOS: Blk SB Bramble
 BLACK: 14 SB Bramble
 BLUE: 5 JD Campbell
 TORT: 2 JB Thomas
 GRAY: 2 SB Campbell

DATE: 3-19-94
 SHOW: Goldleaf RBA
 WHERE: Danville, VA
 JUDGE: R Brewer
 DUTCH: 39
 BOB: Tort JB Wood
 BOS: Blk JD Hopper
 BLACK: 11 JD Hopper
 BLUE: 7 SD Crawford
 CHOC: 6 SB Wood
 GRAY: 3 JB Wood
 STEEL: 4 SB Crawford
 TORT: 8 JB Wood

DATE: 3-19-94
 SHOW: Goldleaf RBA
 WHERE: Danville, VA
 JUDGE: L Shuping
 DUTCH: 44
 BOB: Blk JD Hopper
 BOS: Tort JB Wood
 BLACK: 13 JD Hopper
 BLUE: 7 SD Crawford
 CHOC: 7 SD Brewer
 GRAY: 4 SB NM
 STEEL: 4 SB Wood
 TORT: 9 JB Wood

DATE: 3-19-94
 SHOW: Wind River RBA
 WHERE: Riverton, WY
 JUDGE: B Price
 DUTCH: 40
 BOB: Choc JD S/Sigurdson
 BOS: Choc JB S/Sigurdson
 BLACK: 19 SB Roop
 BLUE: 6 JB Baumert
 CHOC: 11 JD S/Sigurdson

DATE: 3-19-94
 SHOW: Georgia RC
 WHERE: Temple, GA
 JUDGE: C Alexander
 DUTCH: 7
 BOB: Blk SD Schultheis
 BOS: Blk SB NM
 BLACK: 4 SD Schultheis
 BLUE: 2 JD NM
 CHOC: 1 SB NM

DATE: 3-19-94
 SHOW: Georgia RC
 WHERE: Temple, GA
 JUDGE: N Simbeck
 DUTCH: 3
 BOB: Blk SD Schultheis
 BOS: Blk SB NM
 BLACK: 2 SD Schultheis
 CHOC: 1 SB NM

DATE: 3-19-94
 SHOW: Wind River RBA
 WHERE: Riverton, WY
 JUDGE: D Dopher
 DUTCH: 39
 BOB: Blue SB B&L Baumert
 BOS: Blk JD L/Sigurdson
 BLACK: 19 JB L/Sigurdson
 BLUE: 5 SB B&L Baumert
 CHOC: 10 SD S/Sigurdson
 TORT: 1 JB NM
 STEEL: 2 JB NM
 GRAY: 2 JD NM

DATE: 3-19-94
 SHOW: Front Range RB
 WHERE: Golden, CO
 JUDGE: R Hassenpflug
 DUTCH: 16
 ALL WINNERS NM

DATE: 3-19-94
 SHOW: Ventura County RBA
 WHERE: Ventura, CA
 JUDGE: J Milburn
 DUTCH: 42
 BOB: Blue JD NM
 BOS: Blk SB Robinson
 BLACK: 20 SB Robinson
 BLUE: 8 JD NM
 TORT: 6 JB NM
 STEEL: 1 JD Robinson
 GRAY: 7 SB J/Eubank

DATE: 3-19-94
 SHOW: Roadrunner Dutch Club
 WHERE: Ventura, CA
 JUDGE: F Harper
 DUTCH: 63
 BOB: Blue SB NM
 BOS: Blk JD NM
 BLACK: 28 JD NM
 BLUE: 11 SB NM
 CHOC: 3 SB NM
 TORT: 5 SB G&B Sowers
 STEEL: 2 SB Puente
 GRAY: 14 JB K/Eubank

DATE: 3-19-94
 SHOW: RP of Alabama
 WHERE: Florence, AL
 JUDGE: B Kingsbury
 DUTCH: 5
 ALL WINNERS NM

DATE: 3-19-94
 SHOW: Golden Country RBA
 WHERE: Roseville, CA
 JUDGE: L Leverett
 DUTCH: 20
 BOB: Blue SB Dunning
 BOS: Gray JD Bullis
 BLACK: 10 JD Bullis
 BLUE: 8 SB Dunning
 GRAY: 2 JD Bullis

DATE: 3-19-94
 SHOW: Southwest Louisiana RBC
 WHERE: Iowa, LA
 JUDGE: M Henry
 DUTCH: 4
 ALL WINNERS NM

OPEN SHOW REPORTS

DATE: 3-19-94
 SHOW: Mid Jersey R & CBA
 WHERE: Bridgewater, NJ
 JUDGE: G Fellers
 DUTCH: 75
 BOB: Blk SB MacKinnon
 BOS: Blk JD MacKinnon
 BLACK: 29 SB MacKinnon
 BLUE: 17 SB Bradshaw
 CHOC: 7 SB Decker
 TORT: 11 SB MacKinnon
 STEEL: 3 SD Dahl
 GRAY: 8 SB Foote

DATE: 3-19-94
 SHOW: North Central IN RBA
 WHERE: Goshen, IN
 JUDGE: W Bouwkamp
 DUTCH: 53
 BOB: Tort JD R&K Rabbitry
 BOS: Choc JB Hewson
 BLACK: 16 SB Miller
 BLUE: 8 SB Miller
 CHOC: 11 JD Hewson
 TORT: 5 JD R&K Rabbitry
 STEEL: 4 SD Miller
 GRAY: 9 JD Miller

DATE: 3-19-94
 SHOW: Emerald RB
 WHERE: Eugene, OR
 JUDGE: J Forestler
 DUTCH: 13
 BOB: Blk JB A&M Silbernagel
 BOS: Choc JD Vincent
 BLACK: 7 JB A&M Silbernagel
 CHOC: 3 JD Vincent
 TORT: 1 JB NM
 GRAY: 2 JB NM

DATE: 3-19-94
 SHOW: Tri Cities RA
 WHERE: Kennewick, WA
 JUDGE: J Kelly
 DUTCH: 34
 BOB: Blk SB NM
 BOS: Blk JD Wilkes
 BLACK: 15 SB NM
 BLUE: 5 SB NM
 CHOC: 9 JD Wilkes
 GRAY: 1 SB Wilkes
 TORT: 4 JD Campbell

DATE: 3-19-94
 SHOW: Emerald RB
 WHERE: Eugene, OR
 JUDGE: V Hertel
 DUTCH: 14
 BOB: Blk JB A&M Silbernagel
 BOS: Blk JD A&M Silbernagel
 BLACK: 7 JB A&M Silbernagel
 CHOC: 4 SD Vincent
 TORT: 1 JB NM
 GRAY: 2 JB NM

DATE: 3-19-94
 SHOW: RP of Alabama
 WHERE: Florence, AL
 JUDGE: P Delashmit
 DUTCH: 5
 ALL WINNERS NM

DATE: 3-19-94
 SHOW: So Central Iowa RBA
 WHERE: Winterset, IA
 JUDGE: W Grebner
 DUTCH: 40
 BOB: Blue SB McAtee
 BOS: Blue JD NM
 BLACK: 14 JB Lahmann
 BLUE: 12 SB McAtee
 CHOC: 8 SD Dinsdale
 TORT: 3 JB Bengston
 STEEL: 1 JB Bengston
 GRAY: 2 JB Bengston

DATE: 3-20-94
 SHOW: Williams Co RBA
 WHERE: Montpelier, OH
 JUDGE: J Frizzell
 DUTCH: 38
 BOB: Blk SD Hessick
 BOS: Blk SB Hessick
 BLACK: 16 SD Hessick
 BLUE: 6 SB R&J Billups
 CHOC: 3 JB Hessick
 TORT: 6 SB NM
 STEEL: 4 SB Hessick
 GRAY: 3 SB Nixon

DATE: 3-20-94
 SHOW: Tibbar RBA
 WHERE: New Lenox, IL
 JUDGE: M Avesing
 DUTCH: 16
 BOB: Blk SD Kral
 BOS: Blue SB D&D Schwartz
 BLACK: 6 SD Kral
 BLUE: 2 SD D&D Schwartz
 CHOC: 4 JB Kral
 GRAY: 4 SB Kral

DATE: 3-20-94
 SHOW: Pony Express RC
 WHERE: Cameron, MO
 JUDGE: B Rice
 DUTCH: 26
 BOB: Blk JB Bergene
 BOS: Blk JD Bergene
 BLACK: 14 JB Bergene
 BLUE: 5 JB Bergene
 CHOC: 4 JD Bergene
 TORT: 1 SB Bergene
 STEEL: 1 SD NM
 GRAY: 1 SD NM

DATE: 3-20-94
 SHOW: SC State R&CBA
 WHERE: Cola, SC
 JUDGE: M Wunderlin
 DUTCH: 26
 BOB: Blk SD F&K Mullinax
 BOS: Blk SB Anderson
 BLACK: 11 SD F&K Mullinax
 BLUE: 3 JB F&K Mullinax
 CHOC: 2 SD R&M Brewer
 GRAY: 3 SD F&K Mullinax
 STEEL: 3 SB F&K Mullinax
 TORT: 4 SB F&K Mullinax

DATE: 3-26-94
 SHOW: Empire State RBA
 WHERE: Fulton, NY
 JUDGE: B Burdick
 DUTCH: 56
 BOB: Blk SB K&D Emerson
 BOS: Blue JD K&D Emerson
 BLACK: 17 SB K&D Emerson
 BLUE: 14 SB NM
 CHOC: 11 JB K&D Emerson
 STEEL: 2 JD NM
 TORT: 12 SB K&D Emerson

DATE: 3-26-94
 SHOW: Southern WV RBA
 WHERE: Cottageville, WV
 JUDGE: J Frizzell
 DUTCH: 35
 BOB: Blk SB NM
 BOS: Blue JD S.Peters
 BLACK: 16 SB NM
 BLUE: 12 JD S.Peters
 CHOC: 5 JB P.Peters
 GRAY: 2 SD NM

DATE: 3-26-94
 SHOW: St. Louis Area R&CBA
 WHERE: Troy, MO
 JUDGE: S Griffith
 DUTCH: 11
 BOB: Blk JB S&J Satulla
 BOS: Choc JD S&J Satulla
 BLACK: 2 JB S&J Satulla
 CHOC: 9 JB S&J Satulla

DATE: 3-26-94
 SHOW: Motherlode RBA
 WHERE: Placerville, CA
 JUDGE: S Brown
 DUTCH: 21
 BOB: Blk SB Hagen
 BOS: Blk JD T/Whalen
 BLACK: 9 SB Hagen
 BLUE: 6 SB Mead
 GRAY: 4 JD Mead
 STEEL: 1 SB NM
 TORT: 1 SD Mead

DATE: 3-26-94
 SHOW: Bluegrass RBA
 WHERE: Shelbyville, KY
 JUDGE: R Mauck
 DUTCH: 25
 BOB: Blue SB D&J Fleming
 BOS: Blk SD Mueller
 BLACK: 13 SB Campbell
 BLUE: 6 SB D&J Fleming
 CHOC: 1 SB D&J Fleming
 TORT: 3 SB D&J Fleming
 GRAY: 2 SB Campbell

DATE: 3/26-3/27/94
 SHOW: Texas RBA
 WHERE: Belton, TX
 JUDGE: M Etter
 DUTCH: 41
 BOB: Blue JD M&J Mills
 BOS: Tort SB M&J Mills
 BLACK: 13 JD Holman
 BLUE: 8 JD M&J Mills
 CHOC: 5 SD Wade
 GRAY: 7 SD NM
 STEEL: 3 SB M&J Mills
 TORT: 5 SB M&J Mills

OPEN SHOW REPORTS

DATE: 3-26-94
 SHOW: Mile Hi RFA
 WHERE: Prescott, AZ
 JUDGE: C Dick
 DUTCH: 51
 BOB: Tort SD Christ
 BOS: Gray JB Carlton
 BLACK: 9 SD Christ
 BLUE: 8 SD Christ
 CHOC: 10 SD Christ
 GRAY: 10 JB Carlton
 TORT: 14 SD Christ

DATE: 3-26-94
 SHOW: Central Valley RBA
 WHERE: Hanford, CA
 JUDGE: S Williamson
 DUTCH: 28
 BOB: Blk SD J&F Schettler
 BOS: Blk SB Robinson
 BLACK: 7 SD J&F Schettler
 BLUE: 6 JB Giron
 CHOC: 4 JD Baird
 GRAY: 4 JD J&F Schettler
 STEEL: 3 JD Robinson
 TORT: 4 SB NM

DATE: 3-26-94
 SHOW: Southside VA RB
 WHERE: Richmond, VA
 JUDGE: G Grimm
 DUTCH: 43
 BOB: Blk JD NM
 BOS: Blk JB NM
 BLACK: 19 JD NM
 BLUE: 9 JD Wood
 CHOC: 4 JB Crawford
 TORT: 5 SB Wood
 STEEL: 5 SB Wood
 GRAY: 1 JB Wood

DATE: 3-26-94
 SHOW: Northern Plains RBA
 WHERE: Moorhead, MN
 JUDGE: R Steinberg
 DUTCH: 1
 BOB: Blk SD Krall
 BLACK: 1 SD Krall

DATE: 3-26-94
 SHOW: Arizona Desert R&CF
 WHERE: Prescott, AZ
 JUDGE: J Jewett
 DUTCH: 51
 BOB: Gray JB Carlton
 BOS: Blk SD Christ
 BLACK: 9 SD Christ
 BLUE: 8 SD Christ
 CHOC: 10 JB Christ
 TORT: 14 SD Christ
 GRAY: 10 JB Carlton

DATE: 3-26-94
 SHOW: Decatur RBA
 WHERE: Snellville, GA
 JUDGE: R Cota
 DUTCH: 14
 BOB: Blk SD Schultheis
 BOS: Blk SB NM
 BLACK: 9 SD Schultheis
 BLUE: 5 SD Anderson

DATE: 3-26-94
 SHOW: Decatur RBA
 WHERE: Snellville, GA
 JUDGE: R Waggoner
 DUTCH: 9
 BOB: Blk SB Anderson
 BOS: Blk SD Schultheis
 BLACK: 6 SB Anderson
 BLUE: 2 SD Anderson
 GRAY: 1 SD NM

DATE: 3-26-94
 SHOW: Southern University
 WHERE: Baton Rouge, LA
 JUDGE: R Brewer
 DUTCH: 10
 BOB: Blk JB Molinere
 BOS: Blue JD NM
 BLACK: 5 JB Molinere
 BLUE: 4 JD NM
 CHOC: 1 JD NM

DATE: 3-27-94
 SHOW: MA Fed of R & CC
 WHERE: Taunton, MA
 JUDGE: L Benoit
 DUTCH: 18
 BOB: Tort SB Zimmer
 BOS: Blk JD Zimmer
 BLACK: 7 SB Zimmer
 BLUE: 5 SB NM
 GRAY: 3 JD Zimmer
 TORT: 3 SB Zimmer

DATE: 3-27-94
 SHOW: Capital City RC
 WHERE: Lawrence, KS
 JUDGE: E Johnston
 DUTCH: 29
 BOB: Blue SB Bogart
 BOS: Blk JD Bogart
 BLACK: 13 JB Bergene
 BLUE: 8 SB Bogart
 CHOC: 5 SB Evertson
 TORT: 3 JD Bergene

DATE: 3-27-94
 SHOW: Springfield R&CBA
 WHERE: Springfield, OH
 JUDGE: D Hauser
 DUTCH: 19
 BOB: Choc SD Hooper
 BOS: Gray SB Hooper
 BLACK: 19 SD Hessick
 BLUE: 19 SD K&V Bogan
 CHOC: 5 SD Hooper
 TORT: 11 JD Hooper
 STEEL: 7 SB Hessick
 GRAY: 9 SD Hooper

DATE: 3-27-94
 SHOW: Bluegrass RBA
 WHERE: Shelbyville, KY
 JUDGE: R Roehr
 DUTCH: 17
 BOB: Blk JD D&J Fleming
 BOS: Blue SB D&J Fleming
 BLACK: 8 JD D&J Fleming
 BLUE: 5 SB D&J Fleming
 CHOC: 1 SB D&J Fleming
 TORT: 3 SB Fleming

DATE: 4-2-94
 SHOW: Rio Grande Valley RA
 WHERE: Belen, NM
 JUDGE: T Loomis
 DUTCH: 32
 BOB: Gray SD Carlton
 BOS: Choc SB Carlton
 BLACK: 7 SD Garcia
 BLUE: 2 SB Garcia
 CHOC: 3 SB Carlton
 GRAY: 9 SD Carlton
 TORT: 11 SB Carlton

DATE: 4-2-94
 SHOW: East Alabama RBC
 WHERE: Attala, AL
 JUDGE: C Alexander
 DUTCH: 4
 ALL WINNERS NM

DATE: 4-2-94
 SHOW: Champion RC
 WHERE: Wheeling, WV
 JUDGE: H Keller
 DUTCH: 17
 BOB: Choc JD NM
 BOS: Choc SB NM
 BLACK: 6 SD S/Peters
 BLUE: 5 JD S/Peters
 CHOC: 5 JD NM

DATE: 4-2-94
 SHOW: Champion RC
 WHERE: Wheeling, WV
 JUDGE: J Green
 DUTCH: 19
 BOB: Choc JD NM
 BOS: Choc JB P/Peters
 BLACK: 7 JD S/Peters
 BLUE: 5 JD J/Henry
 CHOC: 6 JD NM
 TORT: 1 SD NM

DATE: 4-2-94
 SHOW: East Alabama RBC
 WHERE: Attala, AL
 NO DUTCH SHOWN

DATE: 4-2-94
 SHOW: Golden Prairie RBA
 WHERE: Lafayette, IN
 JUDGE: G Raisor
 DUTCH: 60
 BOB: Gray SD Hewson
 BOS: Blue SB Miller
 BLACK: 22 SD Hewson
 BLUE: 9 SB Miller
 CHOC: 8 SB L&B Snyder
 TORT: 5 SB Hewson
 STEEL: 4 SD Miller
 GRAY: 12 SD Hewson

DATE: 4-2-94
 SHOW: Pacific Rim R&CC
 WHERE: Aldergrove BC Canada
 JUDGE: P Butcher
 DUTCH: 23
 BOB: Blk SD M&D Brak
 BOS: Blk SB M&D Brak
 BLACK: 11 SD M&D Brak
 BLUE: 6 SB M&D Brak
 CHOC: 4 JD M&D Brak
 GRAY: 2 SB Cockburn

OPEN SHOW REPORTS

DATE: 4-2-94
 SHOW: NE Tower on the Plains
 WHERE: Seward, NE
 JUDGE: R Wallace
 DUTCH: 35
 BOB: Blk JD Bogart
 BOS: Blk JB NM
 BLACK: 18 JD Bogart
 BLUE: 4 SB Bogart
 CHOC: 10 SD NM
 GRAY: 2 SD Lahmann
 TORT: 1 SD NM

DATE: 4-2-94
 SHOW: Country RBA
 WHERE: Belen, NM
 JUDGE: C Dick
 DUTCH: 48
 BOB: Gray JD Carlton
 BOS: Tort SB Carlton
 BLACK: 13 SD Garcia
 BLUE: 5 SD Garcia
 CHOC: 5 SD NM
 GRAY: 10 JD Carlton
 STEEL: 2 JD NM
 TORT: 13 SB Carlton

DATE: 4-2-94
 SHOW: Sierra Foothills R&CBA
 WHERE: Gridley, CA
 JUDGE: D Tschantz
 DUTCH: 19
 BOB: Blue JB NM
 BOS: Gray JD J/Barry
 BLACK: 6 SD Lopez
 BLUE: 9 JB NM
 CHOC: 1 JB Williamson
 GRAY: 3 JD J/Barry

DATE: 4-2-94
 SHOW: Sierra Foothills R&CBA
 WHERE: Gridley, CA
 JUDGE: R Wood
 DUTCH: 22
 BOB: Gray JD J/Barry
 BOS: Blue JB Groesbeck
 BLACK: 8 SD Lopez
 BLUE: 9 JB Groesbeck
 CHOC: 1 JB Williamson
 GRAY: 3 JD J/Barry
 STEEL: 1 SD NM

DATE: 4-2-94
 SHOW: Alaskan RBC
 WHERE: Wasilla, AK
 JUDGE: V Palmblad
 DUTCH: 13
 BOB: Blk SB Cler
 BOS: Blk SD NM
 BLACK: 6 SB Cler
 BLUE: 5 SD Cler
 TORT: 2 SD NM

DATE: 4-2-94
 SHOW: Alaskan RBC
 WHERE: Wasilla, AK
 JUDGE: S Henninger
 DUTCH: 13
 BOB: Blk SD NM
 BOS: Blue SB Paquette
 BLACK: 6 SD NM
 BLUE: 5 SB Paquette
 TORT: 2 SD NM

DATE: 4-2-94
 SHOW: NE Tower on the Plains
 WHERE: Seward, NE
 JUDGE: M Cole
 DUTCH: 39
 BOB: Blk JD Bogart
 BOS: Blue SB Bogart
 BLACK: 17 JD Bogart
 BLUE: 9 SB Bogart
 CHOC: 10 JD NM
 GRAY: 2 SD Lahmann
 TORT: 1 SD NM

DATE: 4-2-94
 SHOW: Crossroads RBA
 WHERE: Stateville, NC
 JUDGE: C Haaf
 DUTCH: 26
 BOB: Blue JB Wood
 BOS: Blk SD NM
 BLACK: 9 SD NM
 BLUE: 4 JB Wood
 CHOC: 3 SB Wood
 TORT: 6 SB Wood
 STEEL: 2 JB Wood
 GRAY: 2 JB Wood

DATE: 4-2-94
 SHOW: Hoosier Dutch RF
 WHERE: Lafayette, IN
 JUDGE: D Hauser
 DUTCH: 58
 BOB: Blk JD Worden
 BOS: Tort JB Hewson
 BLACK: 21 JD Worden
 BLUE: 9 JD Miller
 CHOC: 8 JD Hewson
 GRAY: 11 JD Miller
 STEEL: 4 JB Miller
 TORT: 5 JB Hewson

DATE: 4-9-94
 SHOW: Midway RB & FA
 WHERE: Valdosta, GA
 JUDGE: N McNary
 DUTCH: 9
 BOB: Blk SB NM
 BOS: Blk SD NM
 BLACK: 4 SB NM
 BLUE: 1 JD Dallison
 TORT: 1 SD NM
 GRAY: 3 SB Dallison

DATE: 4-9-94
 SHOW: Tri County RBA
 WHERE: Jefferson, WI
 JUDGE: O Yates
 DUTCH: 9
 BOB: Blk SB R&S Uecker
 BOS: Steel JD R&S Uecker
 BLACK: 4 SB R&S Uecker
 BLUE: 2 SD R&S Uecker
 STEEL: 3 JD R&S Uecker

DATE: 4-9-94
 SHOW: Midway RB & FA
 WHERE: Valdosta, GA
 JUDGE: M Cummings
 DUTCH: 7
 ALL WINNERS NM

DATE: 4-9-94
 SHOW: Yakima Valley RBA
 WHERE: Yakima, WA
 JUDGE: G Germaine
 DUTCH: 45
 BOB: Blk SB NM
 BOS: Tort JD Widrig
 BLACK: 19 SB NM
 BLUE: 11 SB NM
 CHOC: 6 JB Norwood
 GRAY: 2 SB R&C Coale
 TORT: 7 JD Widrig

DATE: 4-9-94
 SHOW: Upper Midwest Dutch RC
 WHERE: St Charles, MN
 JUDGE: C Stelloh
 DUTCH: 111
 BOB: Blk SB Guetschow
 BOS: Blue JD Hawkeye Dutch
 BLACK: 30 SB Guetschow
 BLUE: 25 SB D&K Gates
 CHOC: 20 JB Bengston
 TORT: 25 SB Dowd's Dutch
 STEEL: 6 SD Dowd's Dutch
 GRAY: 5 JB Guetschow

DATE: 4-9-94
 SHOW: Mountain Meadow R&CC
 WHERE: Caldwell, ID
 JUDGE: R Allebach
 DUTCH: 24
 BOB: Blue SB NM
 BOS: Blue SD NM
 BLACK: 7 SB NM
 BLUE: 4 SB NM
 CHOC: 3 SB NM
 GRAY: 1 JB NM
 STEEL: 5 JB Loucks
 TORT: 4 SB NM

DATE: 4-9-94
 SHOW: Huntington RBA
 WHERE: Columbia City, IN
 JUDGE: D Hauser
 DUTCH: 20
 BOB: Blk JD Worden
 BOS: Blk JB Worden
 BLACK: 9 JD Worden
 BLUE: 3 JB R&K Rabbitry
 CHOC: 2 JD R&K Rabbitry
 GRAY: 1 JD Miller
 STEEL: 4 JB R&K Rabbitry
 TORT: 1 JD R&K Rabbitry

DATE: 4-9-94
 SHOW: Nebraskaland RBA
 WHERE: Mitchell, NE
 JUDGE: R Dannehl
 DUTCH: 36
 BOB: Blk SB NM
 BOS: Blue SD L&B Baumert
 BLACK: 10 SB NM
 BLUE: 12 SB Metcalf
 CHOC: 9 JD Stanley
 TORT: 4 SB Metcalf
 GRAY: 1 SB NM

OPEN SHOW REPORTS

DATE: 4-9-94
 SHOW: Harebrained Happening
 WHERE: Ukiah, CA
 JUDGE: S Brown
 DUTCH: 20
 BOB: Blk SB Bullis
 BOS: Choc SD Bullis
 BLACK: 7 SB Bullis
 BLUE: 6 SB NM
 CHOC: 1 SD Bullis
 TORT: 2 SB NM
 GRAY: 4 JD Mead

DATE: 4-9-94
 SHOW: Platte Valley RC
 WHERE: Mitchell, NE
 JUDGE: E Johnson, Jr.
 DUTCH: 35
 BOB: Blue JD B&L Baumert
 BOS: Blk SB NM
 BLACK: 10 SD Stanley
 BLUE: 11 JD B&L Baumert
 CHOC: 9 JB NM
 TORT: 4 JD Stanley
 GRAY: 1 SB NM

DATE: 4/9-4/10/94
 SHOW: South Plains RBA
 WHERE: Lubbock, TX
 JUDGE: W Gibson
 DUTCH: 43
 BOB: Blue SB McManus
 BOS: Blk JD NM
 BLACK: 7 JD NM
 BLUE: 12 SB McManus
 CHOC: 9 JB NM
 TORT: 15 SB NM

DATE: 4-10-94
 SHOW: Springfield RBC
 WHERE: Springfield, IL
 JUDGE: M Wunderlin
 DUTCH: 18
 BOB: Blk JD HGH Rabbitry
 BOS: Blue SB D&D Schwartz
 BLACK: 8 JD HGH Rabbitry
 BLUE: 3 SB D&D Schwartz
 CHOC: 1 SD NM
 TORT: 6 JB NM

DATE: 4-10-94
 SHOW: Tri County RBA
 WHERE: Jefferson, WI
 JUDGE: R Riddle
 DUTCH: 12
 BOB: Blue SB K&D Gates
 BOS: Blue SD R&S Uecker
 BLACK: 5 SB R&S Uecker
 BLUE: 3 SB K&D Gates
 CHOC: 1 SB K&D Gates
 STEEL: 3 SB R&S Uecker

DATE: 4-10-94
 SHOW: Rochester RBA
 WHERE: Rochester, NY
 JUDGE: M Stewardson
 DUTCH: 48
 BOB: Choc SD C, J&R Andrews
 BOS: Tort SB K&D Emerson
 BLACK: 13 JB NM
 BLUE: 10 JB K&D Emerson
 CHOC: 14 SD C, J&R Andrews
 TORT: 11 SB K&D Emerson

DATE: 4-10-94
 SHOW: Mississippi Valley RBA
 WHERE: DeWitt, IA
 JUDGE: R Steinberg
 DUTCH: 33
 BOB: Steel SD Dowd
 BOS: Tort JB Dowd
 BLACK: 11 JB Dowd
 BLUE: 7 SD Dowd
 CHOC: 7 SB Dowd
 GRAY: 1 SD Dowd
 STEEL: 1 SD Dowd
 TORT: 6 SD Dowd

DATE: 4-10-94
 SHOW: Western Mass RBA
 WHERE: Chicopee, MA
 JUDGE: C Howell
 DUTCH: 47
 BOB: Steel SD Dahl
 BOS: Blue SB Zimmer
 BLACK: 18 SB Sartoni
 BLUE: 8 SD Dahl
 CHOC: 2 SB Dahl
 TORT: 11 JB NM
 STEEL: 2 SD Dahl
 GRAY: 6 SD Dahl

DATE: 4-10-94
 SHOW: Rochester RBA
 WHERE: Rochester, NY
 JUDGE: B Shaftoe
 DUTCH: 63
 BOB: Blk SB K&D Emerson
 BOS: Choc JD K&D Emerson
 BLACK: 20 SB K&D Emerson
 BLUE: 13 SB NM
 CHOC: 14 SB K&D Emerson
 GRAY: 2 JD Dahl
 STEEL: 1 SD Dahl
 TORT: 13 SB K&D Emerson

DATE: 4-16-94
 SHOW: Whitewater Valley RBA
 WHERE: Connersville, IN
 JUDGE: G Judy
 DUTCH: 54
 BOB: Blue JB R&K Rabbitry
 BOS: Blk JD R&K Rabbitry
 BLACK: 20 JD R&K Rabbitry
 BLUE: 8 JB R&K Rabbitry
 CHOC: 6 SB Hewson
 GRAY: 10 JD Miller
 STEEL: 4 JB R&K Rabbitry
 TORT: 6 JB Hewson

DATE: 4-16-94
 SHOW: Oregon League of R&CB
 WHERE: Eugene, OR
 JUDGE: T Thomas
 DUTCH: 44
 BOB: Blue SB J/Reeves
 BOS: Blk JD Silbernagel
 BLACK: 15 SB N/Reeves
 BLUE: 11 SB J/Reeves
 CHOC: 6 JD Vincent
 GRAY: 9 SB M/Reeves
 STEEL: 1 SB NM
 TORT: 2 SB NM

DATE: 4-16-94
 SHOW: Eastern Carolina RBA
 WHERE: Smithfield, NC
 JUDGE: L Franklin
 DUTCH: 20
 BOB: Blue JD Wood
 BOS: Blue JB Wood
 BLACK: 4 SD Wood
 BLUE: 4 JD Wood
 CHOC: 3 JD Wood
 TORT: 5 JB Wood
 STEEL: 2 SB Wood
 GRAY: 2 JB Wood

DATE: 4-16-94
 SHOW: Eastern Carolina RBA
 WHERE: Smithfield, NC
 JUDGE: B Rice
 DUTCH: 20
 BOB: Tort SB Wood
 BOS: Blue JD Wood
 BLACK: 4 SD Wood
 BLUE: 4 JD Wood
 CHOC: 3 JD Wood
 TORT: 5 SB Wood
 STEEL: 2 SB Wood
 GRAY: 2 SB Wood

DATE: 4-16-94
 SHOW: California State Conv
 WHERE: Tulare, CA
 JUDGE: S Byrom
 DUTCH: 90
 BOB: Steel JD Purpus
 BOS: Blk SB Robinson
 BLACK: 32 SB Robinson
 BLUE: 16 JB Giron
 CHOC: 11 JB J&F Schettler
 GRAY: 12 JD Purpus
 STEEL: 8 JD Purpus
 TORT: 11 SD Dobson

DATE: 4-16-94
 SHOW: Cattaraugus Co RBA
 WHERE: Olean, NY
 JUDGE: C Hayhow
 DUTCH: 14
 BOB: Choc SD C, J&R Andrews
 BOS: Gray JB NM
 BLACK: 2 JB NM
 BLUE: 1 SB C, J&R Andrews
 CHOC: 6 SD C, J&R Andrews
 TORT: 1 SB Stenson
 STEEL: 1 SD NM
 GRAY: 3 SD NM

DATE: 4-16-94
 SHOW: Mid City RC
 WHERE: Yankton, SD
 JUDGE: B Lawrence
 DUTCH: 71
 BOB: Gray SD Simons
 BOS: Tort SB Simons
 BLACK: 25 SB Rydell
 BLUE: 12 JB Lahmann
 CHOC: 7 SB Grann Rabbitry
 TORT: 9 SB Simons
 STEEL: 6 SB Waldo
 GRAY: 12 SD Simons

OPEN SHOW REPORTS

DATE: 4-16-94
 SHOW: Mid City RC
 WHERE: Yankton, SD
 JUDGE: Wallace & Jackson
 DUTCH: 94
 BOB: Tort SB Simons
 BOS: Gray SD Simons
 BLACK: 33 SB Simons
 BLUE: 19 SB Simons
 CHOC: 7 JD Rydell
 TORT: 12 SB Simons
 STEEL: 8 JB Scheef
 GRAY: 15 SD Simons

DATE: 4-16-94
 SHOW: South Florida RBA
 WHERE: Tampa, FL
 JUDGE: B Kingsbury
 DUTCH: 47
 BOB: Choc JD May
 BOS: Gray SB Savitz
 BLACK: 19 JD May
 BLUE: 11 JD Savitz
 CHOC: 9 JD May
 TORT: 5 JB Grabenbauer
 STEEL: 1 JD NM
 GRAY: 2 SB Savitz

DATE: 4-16-94
 SHOW: Hoosier Dutch RF
 WHERE: Connersville, IN
 JUDGE: T Fender
 DUTCH: 54
 BOB: Steel JB R&K Rabbitry
 BOS: Steel JD Hewson
 BLACK: 19 SB Worden
 BLUE: 8 SB Hewson
 CHOC: 6 SD K&G Cummings
 GRAY: 10 JD Miller
 STEEL: 5 JB R&K Rabbitry
 TORT: 6 JB Hewson

DATE: 4-16-94
 SHOW: San Antonio RBA
 WHERE: Sequin, TX
 JUDGE: J Livingston
 DUTCH: 23
 BOB: Blue JD M&J Mills
 BOS: Blk JB M&J Mills
 BLACK: 10 JB M&J Mills
 BLUE: 6 JD M&J Mills
 CHOC: 1 SB Wade
 STEEL: 1 JB NM
 GRAY: 5 JD M&J Mills

DATE: 4-16-94
 SHOW: South Florida RBA
 WHERE: Tampa, FL
 JUDGE: C Alexander
 DUTCH: 35
 BOB: Black SD NM
 BOS: Tort SB NM
 BLACK: 15 SD NM
 BLUE: 6 SD Cummings
 CHOC: 7 JD May
 GRAY: 2 SB Savitz
 TORT: 5 SB NM

DATE: 4-16-94
 SHOW: San Antonio RBA
 WHERE: Sequin, TX
 JUDGE: G Gillispie
 DUTCH: 22
 BOB: Blue SB M&J Mills
 BOS: Blue JD M&J Mills
 BLACK: 10 SB NM
 BLUE: 6 SB M&J Mills
 CHOC: 1 SB Wade
 GRAY: 4 JD M&J Mills
 STEEL: 1 JB NM

DATE: 4-16-94
 SHOW: S. Central Mich RC
 WHERE: Mason, MI
 JUDGE: W Bouwkamp
 DUTCH: 21
 BOB: Choc SD NM
 BOS: Blk SB Cushman
 BLACK: 4 SB Cushman
 BLUE: 9 JB Cushman
 CHOC: 2 SD NM
 TORT: 6 SD Cushman

DATE: 4-16-94
 SHOW: East Ohio RB
 WHERE: Cortland, OH
 JUDGE: W Davis
 DUTCH: 10
 BOB: Blk JD S/Peters
 BOS: Choc JB P/Peters
 BLACK: 6 JD S/Peters
 BLUE: 1 SD S/Peters
 CHOC: 3 JB P/Peters

DATE: 4-17-94
 SHOW: Oregon League of R&CB
 WHERE: Eugene, OR
 JUDGE: B Koch
 DUTCH: 33
 BOB: Blk SB M/Reeves
 BOS: Blk SD NM
 BLACK: 12 SB M/Reeves
 BLUE: 10 SB J/Reeves
 CHOC: 1 SB NM
 GRAY: 9 SB N/Reeves
 TORT: 1 SB Eliminated

DATE: 4-17-94
 SHOW: Whitewater Valley RBA
 WHERE: Connersville, IN
 JUDGE: K Cunningham
 DUTCH: 15
 BOB: Blk SD S&J Freed
 BOS: Tort SB Cummings
 BLACK: 6 SD S&J Freed
 BLUE: 3 SB Cummings
 CHOC: 1 SD Cummings
 GRAY: 3 SB Cummings
 TORT: 2 SB Cummings

DATE: 4-17-94
 SHOW: SC State R & CBA
 WHERE: Columbia, SC
 JUDGE: J Frizzell
 DUTCH: 3
 BOB: Choc SD R&M Brewer
 BOS: None
 CHOC: 2 SD R&M Brewer
 TORT: 1 SD R&M Brewer

DATE: 4-17-94
 SHOW: Fairfield Co RBA
 WHERE: Fairfield, CT
 JUDGE: E Szczepanek
 DUTCH: 52
 BOB: Blue SB Zimmer
 BOS: Blue SD Dahl
 BLACK: 17 JD Zimmer
 BLUE: 11 SB Zimmer
 CHOC: 4 SB Dahl
 TORT: 8 SB Zimmer
 STEEL: 6 JB Dahl
 GRAY: 6 SB Zimmer

DATE: 4-17-94
 SHOW: California State RBA
 WHERE: Tulare, CA
 JUDGE: J Green
 DUTCH: 80
 BOB: Blue JD J&F Schettler
 BOS: Blk JB Eubank
 BLACK: 27 JB Eubank
 BLUE: 13 JD J&F Schettler
 CHOC: 11 JB J&F Schettler
 GRAY: 11 JD Purpus
 STEEL: 7 JD NM
 TORT: 11 JD Dobson

DATE: 4-17-94
 SHOW: Decatur Area RBA
 WHERE: Decatur, IL
 JUDGE: R Gehr
 DUTCH: 6
 BOB: Blk JB NM
 BOS: Blk JD K&L MacLeod
 BLACK: 3 JB NM
 BLUE: 1 SB K&L MacLeod
 CHOC: 2 SB K&L MacLeod

DATE: 4-17-94
 SHOW: Portsmouth RBA
 WHERE: Lucasville, OH
 JUDGE: P Macy
 DUTCH: 32
 BOB: Blk SD NM
 BOS: Blk SB NM
 BLACK: 9 SD NM
 BLUE: 15 SD K&V Bogan
 CHOC: 1 SD NM
 TORT: 3 SD K&V Bogan
 GRAY: 4 SD NM

DATE: 4-23-94
 SHOW: Snowy Hills RBA
 WHERE: Colville, WA
 JUDGE: unknown
 DUTCH: 44
 BOB: Blk SB M&D Brak
 BOS: Blk SD M&D Brak
 BLACK: 15 SB M&D Brak
 BLUE: 11 JD M&D Brak
 CHOC: 7 JD M&D Brak
 GRAY: 7 SB NM
 STEEL: 1 SD NM
 TORT: 3 SD NM

OPEN SHOW REPORTS

DATE: 4-23-94
 SHOW: Madison County RC
 WHERE: Alexandria, IN
 JUDGE: T Thomas
 DUTCH: 41
 BOB: Choc SB Hewson
 BOS: Tort SD K&G Cummings
 BLACK: 8 JD Hewson
 BLUE: 6 SB K&G Cummings
 CHOC: 7 SB Hewson
 TORT: 8 SD K&G Cummings
 STEEL: 4 SB NM
 GRAY: 8 SB K&G Cummings

DATE: 4-23-94
 SHOW: South Texas RBA
 WHERE: Yoakum, TX
 JUDGE: B Kingsbury
 DUTCH: 34
 BOB: Gray SD NM
 BOS: Tort SB M&J Mills
 BLACK: 7 SD NM
 BLUE: 8 SB M&J Mills
 CHOC: 1 JB Wade
 TORT: 5 SB M&J Mills
 STEEL: 4 SB M&J Mills
 GRAY: 9 SD NM

DATE: 4-23-94
 SHOW: Fair City RC
 WHERE: Wessington Sprgs, SD
 JUDGE: R Koch
 DUTCH: 26
 BOB: Tort JB Blythe
 BOS: Blk SD Scheef
 BLACK: 8 JB Blythe
 BLUE: 12 SD NM
 CHOC: 1 SB NM
 TORT: 3 JB Blythe
 STEEL: 1 JB Scheef
 GRAY: 1 SD NM

DATE: 4-23-94
 SHOW: Carolina Mountain RBA
 WHERE: Waynesville, NC
 JUDGE: R Waggoner
 DUTCH: 71
 BOB: Blk SB Anderson
 BOS: Blk SD Schultheis
 BLACK: 25 SB Anderson
 BLUE: 17 SD Anderson
 CHOC: 5 SD R&M Brewer
 GRAY: 5 SD F&K Mullinax
 STEEL: 5 SB F&K Mullinax
 TORT: 14 SD R&M Brewer

DATE: 4-23-94
 SHOW: Snowy Hills RBA
 WHERE: Colville, WA
 JUDGE: V Palmblad
 DUTCH: 35
 BOB: Blk JD M&D Brak
 BOS: Blk JB M&D Brak
 BLACK: 12 JD M&D Brak
 BLUE: 8 JD R&C Coale
 CHOC: 7 JD M&D Brak
 GRAY: 5 SB NM
 STEEL: 1 SD NM
 TORT: 2 SB NM

DATE: 4-23-94
 SHOW: Riverton RB
 WHERE: Riverton, WY
 JUDGE: P Fix
 DUTCH: 26
 BOB: Blk JD L/Sigurdson
 BOS: Blue SB Metcalf
 BLACK: 10 JD L/Sigurdson
 BLUE: 5 SB Metcalf
 CHOC: 7 JD Roop
 TORT: 1 SB Metcalf
 STEEL: 2 JB NM
 GRAY: 1 JD Roop

DATE: 4-23-94
 SHOW: Oklahoma RBA
 WHERE: Norman, OK
 JUDGE: S Freed
 DUTCH: 6
 BOB: Blue SD McClung
 BOS: Blk SB Daly
 BLACK: 3 SB Daly
 BLUE: 1 SD McClung
 CHOC: 1 JB McClung
 TORT: 1 JD McClung

DATE: 4-23-94
 SHOW: Silver Sage R & CBA
 WHERE: Gardnerville, NV
 JUDGE: B Talley
 DUTCH: 53
 BOB: Blue SB J&F Schettler
 BOS: Gray JD J&F Schettler
 BLACK: 7 SB Burke
 BLUE: 11 SB J&F Schettler
 CHOC: 9 SD NM
 GRAY: 9 JD J&F Schettler
 STEEL: 9 SD J&F Schettler
 TORT: 8 JD J&F Schettler

DATE: 4-23-94
 SHOW: New England R&CSC
 WHERE: No Haven, CT
 JUDGE: L Benoit
 DUTCH: 45
 BOB: Blk SB Dahl
 BOS: Blk JD Dahl
 BLACK: 13 SB Dahl
 BLUE: 10 JB Bradshaw
 CHOC: 5 SD Dahl
 TORT: 5 SD Dahl
 STEEL: 7 JD Dahl
 GRAY: 5 JB Dahl

DATE: 4-23-94
 SHOW: Carolina Dutch Club
 WHERE: Waynesville, NC
 JUDGE: B Lawrence
 DUTCH: 88
 BOB: Gray SD F&K Mullinax
 BOS: Blk SB Anderson
 BLACK: 33 SD Schultheis
 BLUE: 20 SD Anderson
 CHOC: 7 SB Wood
 TORT: 14 JB Wood
 STEEL: 7 SB F&K Mullinax
 GRAY: 7 SD F&K Mullinax

DATE: 4-23-94
 SHOW: Jackson Purchase RBC
 WHERE: Hopkinville, KY
 JUDGE: C Thomas
 DUTCH: 35
 BOB: Blk SD Thomas
 BOS: Blue SB D&J Fleming
 BLACK: 12 SD Thomas
 BLUE: 11 SB D&J Fleming
 CHOC: 9 SB D&J Fleming
 TORT: 3 SB Thomas

DATE: 4-23-94
 SHOW: Jackson Purchase RBC
 WHERE: Hopkinville, KY
 JUDGE: C Richenback
 DUTCH: 35
 BOB: Blk SB D&J Fleming
 BOS: Blk JD D&J Fleming
 BLACK: 13 SB D&J Fleming
 BLUE: 9 JB D&J Fleming
 CHOC: 9 SD S&J Satulla
 TORT: 4 SB Thomas

DATE: 4-23-94
 SHOW: Centennial R&CBA
 WHERE: Norman, OK
 JUDGE: C Carroll
 DUTCH: 6
 BOB: Blk SB Daly
 BOS: Blue SD McClung
 BLACK: 3 SB Daly
 BLUE: 1 SD McClung
 CHOC: 1 JB McClung
 TORT: 1 JD McClung

DATE: 4-24-94
 SHOW: Mills County RBA
 WHERE: Thurman, IA
 JUDGE: W Gibson
 DUTCH: 24
 BOB: Blue SB Lahmann
 BOS: Blk JD Scheef
 BLACK: 12 JD Scheef
 BLUE: 5 SB Lahmann
 CHOC: 5 JD Lahmann
 STEEL: 1 JB Scheef
 GRAY: 1 JD NM

DATE: 4-24-94
 SHOW: Golden West RBA
 WHERE: Orange, CA
 JUDGE: F Harper
 DUTCH: 33
 BOB: Blk JD NM
 BOS: Blk SB Eubank
 BLACK: 12 JD NM
 BLUE: 4 JD NM
 CHOC: 2 JB Gillis
 GRAY: 8 JB A/Miskell
 STEEL: 3 JD Purpus
 TORT: 4 SB A/Miskell

DATE: 4-24-94
 SHOW: Central ME RBA
 WHERE: Richmond, ME
 JUDGE: L Benoit
 DUTCH: 7
 ALL WINNERS NM

OPEN SHOW REPORTS

DATE: 4-24-94
 SHOW: Central Wisconsin RBA
 WHERE: Marshfield, WI
 JUDGE: M Wunderlin
 DUTCH: 22
 BOB: Blue SB D&K Gates
 BOS: Steel JD R&S Uecker
 BLACK: 11 JB D&K Gates
 BLUE: 4 SB D&K Gates
 STEEL: 3 JD R&S Uecker
 TORT: 1 SD Wetzel

DATE: 4-24-94
 SHOW: Lake Erie RB
 WHERE: Oak Harbor, OH
 JUDGE: M Henry
 DUTCH: 24
 BOB: Blk SD Hessick
 BOS: Steel JB Nixon
 BLACK: 7 SD Hessick
 BLUE: 8 SB Empcke
 CHOC: 4 SD Hessick
 GRAY: 3 JB Nixon
 STEEL: 2 JB Nixon

DATE: 4-24-94
 SHOW: Cedar Rapids RB
 WHERE: Central City, IA
 JUDGE: R Dickerson
 DUTCH: 37
 BOB: Blue SB McAtee
 BOS: Blue JD E&S Mixdorf
 BLACK: 10 SD E&S Mixdorf
 BLUE: 6 SB McAtee
 CHOC: 12 SB Dowd
 TORT: 7 SB Dowd
 STEEL: 2 SD Dowd

DATE: 4/27-5/1/94
 SHOW: Santa Barbara Fair/Expo
 WHERE: Santa Barbara, CA
 JUDGE: L Bell
 DUTCH: 47
 BOB: Blk JD Robinson
 BOS: Gray SB NM
 BLACK: 12 JD Robinson
 BLUE: 12 SB NM
 CHOC: 6 JB NM
 TORT: 10 SD NM
 STEEL: 3 JD Robinson
 GRAY: 4 SB NM

DATE: 4-30-94
 SHOW: Van Wert Co RBA
 WHERE: Van Wert, OH
 JUDGE: C Filliator
 DUTCH: 7
 ALL WINNERS NM

DATE: 4-30-94
 SHOW: Hop To It RC
 WHERE: Hutchinson, MN
 JUDGE: R Goedderz
 DUTCH: 25
 BOB: Blk SD Ihrke/Reil
 BOS: Tort JB NM
 BLACK: 5 SD Ihrke/Reil
 BLUE: 3 SB Wetzel
 CHOC: 1 SB Ihrke/Reil
 TORT: 5 JB NM
 STEEL: 7 SB Ihrke/Reil
 GRAY: 4 SD Ihrke/Reil

DATE: 4-30-94
 SHOW: Jacksonville RBA
 WHERE: Green Cove Springs, FL
 JUDGE: D Burchfield
 DUTCH: 22
 BOB: Blk JD Cummings
 BOS: Gray SB Dallison
 BLACK: 7 JD Cummings
 BLUE: 5 SD Cummings
 CHOC: 1 SB Savitz
 TORT: 3 SB NM
 GRAY: 6 SB Dallison

DATE: 4-30-94
 SHOW: Turquoise Mt RBA
 WHERE: Grants, NM
 JUDGE: T Loomis
 DUTCH: 28
 BOB: Gray SD Carlton
 BOS: Blk JB Garcia
 BLACK: 7 SD Garcia
 BLUE: 3 SB Carlton
 CHOC: 4 SD Garcia
 TORT: 8 SB Garcia
 GRAY: 6 SD Carlton

DATE: 4-30-94
 SHOW: National Dutch Show
 WHERE: Reading, PA
 JUDGES: Dr T Reed
 A Butler
 L Bengston
 DUTCH: 451
 BOB: Blk JD Shaw
 BOS: Steel JB Miller
 BLACK: 131 JD Shaw
 BLUE: 86 SB Stahler
 CHOC: 74 JB Thompson
 TORT: 83 SB NM
 STEEL: 38 JB Miller
 GRAY: 39 SB Hooper

DATE: 4-30-94
 SHOW: Garden City RBA
 WHERE: Missoula, MT
 JUDGE: B Koch
 DUTCH: 13
 BOB: Blue SB Wallace
 BOS: Blk JD Wallace
 BLACK: 4 JD Wallace
 BLUE: 7 SB Wallace
 CHOC: 1 SD Van Gilder
 GRAY: 1 JD Houseman

DATE: 4-30-94
 SHOW: Greater VT R&CBA
 WHERE: Rutland, VT
 JUDGE: P Jurgelonis
 DUTCH: 19
 BOB: Gray JB Dahl
 BOS: Choc SD NM
 BLACK: 7 JD NM
 BLUE: 4 JD NM
 CHOC: 2 SD NM
 TORT: 2 JD Dahl
 STEEL: 1 SD Dahl
 GRAY: 2 JB Dahl

DATE: 4-30-94
 SHOW: Jacksonville RBA
 WHERE: Green Cove Springs, FL
 JUDGE: J Hardin
 DUTCH: 14
 BOB: Choc SB Savitz
 BOS: Blue JD Grabenbauer
 BLACK: 5 SD NM
 BLUE: 3 JD Grabenbauer
 CHOC: 1 SB Savitz
 TORT: 3 SB NM
 GRAY: 2 SB Cummings

DATE: 4-30-94
 SHOW: Turquoise Mt RBA
 WHERE: Grants, NM
 JUDGE: J Conyers
 BOB: Gray SD Carlton
 BOS: Tort SB Garcia
 BLACK: 7 SD Garcia
 BLUE: 3 SB Garcia
 CHOC: 4 SB Carlton
 GRAY: 6 SD Carlton
 TORT: 8 SB Garcia

DATE: 5-1-94
 SHOW: Waterloo Area RBA
 WHERE: Waterloo, IA
 JUDGE: B Rice
 DUTCH: 46
 BOB: Blk JB Dowd's Dutch
 BOS: Blue SD Dowd's Dutch
 BLACK: 11 JB Dowd's Dutch
 BLUE: 12 SD Dowd's Dutch
 CHOC: 11 SB Dowd's Dutch
 TORT: 8 SB Dowd's Dutch
 STEEL: 3 SD Hawkeye Dutch Rbtry
 GRAY: 1 SB Dowd's Dutch

DATE: 5-1-94
 SHOW: Salt City RBA
 WHERE: Hutchinson, KS
 JUDGE: C Addison
 DUTCH: 31
 BOB: Blk JD E&T Bogart
 BOS: Blk SB Bergene
 BLACK: 13 JD E&T Bogart
 BLUE: 12 JB Bergene
 CHOC: 2 SD NM
 TORT: 2 SD Bergene
 STEEL: 2 JB Bergene

DATE: 5-1-94
 SHOW: Sun Valley Dutch Fanciers
 WHERE: Escondido, CA
 JUDGE: A Barr
 DUTCH: 80
 BOB: Gray JB Purpus
 BOS: Blk JD Staples
 BLACK: 25 JD Staples
 BLUE: 16 JD Staples
 CHOC: 4 JB Gillis
 TORT: 13 SB Dobson
 STEEL: 6 JB Purpus
 GRAY: 16 JB Purpus

DATE: 5-1-94
 SHOW: Oklahoma State RBA
 WHERE: Tulsa, OK
 JUDGE: A Panko
 DUTCH: 6
 ALL WINNERS NM

OPEN SHOW REPORTS

DATE: 5-1-94
 SHOW: Garden City RBA
 WHERE: Missoula, MT
 JUDGE: J Jewett
 DUTCH: 16
 BOB: Blue SD NM
 BOS: Blue SB Wallace
 BLACK: 6 JB Van Gilder
 BLUE: 8 SD NM
 CHOC: 1 SD Van Gilder
 TORT: 1 SD NM

DATE: 5-1-94
 SHOW: Sun Valley Dutch Fanciers
 WHERE: Escondido, CA
 JUDGE: C Zemny
 DUTCH: 73
 BOB: Blk JD Eubank
 BOS: Blk SB NM
 BLACK: 23 JD Eubank
 BLUE: 13 JD NM
 CHOC: 4 SD NM
 TORT: 11 JB Kuppens
 STEEL: 6 JB Purpus
 GRAY: 16 JD Bell

DATE: 5-1-94
 SHOW: Effingham RBA
 WHERE: Altamont, IL
 JUDGE: H Conrad
 DUTCH: 10
 BOB: Blk SB K&L MacLeod
 BOS: Blk JD K&L MacLeod
 BLACK: 3 SB K&L MacLeod
 BLUE: 1 SB K&L MacLeod
 CHOC: 4 JD S&J Satulla
 TORT: 1 SD K&L MacLeod
 STEEL: 1 SB K&L MacLeod

DATE: 5-7-94
 SHOW: Fruit Ridge RF
 WHERE: Hudsonville, MI
 JUDGE: J Weltereden
 DUTCH: 19
 BOB: Blue SB Cushman
 BOS: Blue Sd Cushman
 BLACK: 5 JB Cushman
 BLUE: 11 SB Cushman
 TORT: 3 SD Cushman

DATE: 5-7-94
 SHOW: RP Santa Clara Valley
 WHERE: San Jose, CA
 JUDGE: C Gomez
 DUTCH: 69
 BOB: Blue SD Hunzie
 BOS: Blue SB NM
 BLACK: 21 JD NM
 BLUE: 25 SD Hunzie
 CHOC: 12 SD Uchiyama
 TORT: 2 SD J&F Schettler
 STEEL: 4 SD J&F Schettler
 GRAY: 5 SD NM

DATE: 5-14-94
 SHOW: Tipton Co RBA
 WHERE: Burlison, TN
 JUDGE: P Delaschmit
 DUTCH: 9
 ALL WINNERS NM

DATE: 5-14-94
 SHOW: Tipton Co RBA
 WHERE: Burlison, TN
 JUDGE: P Delaschmit
 DUTCH: 7
 ALL WINNERS NM

DATE: 5-14-94
 SHOW: Tom Green County RC
 WHERE: San Angelo, TX
 NO DUTCH SHOWN

DATE: 5-21-94
 SHOW: Saginaw Valley R&CBA
 WHERE: Saginaw, MI
 JUDGE: P Jones
 DUTCH: 56
 BOB: Blk JB Cushman
 BOS: Choc JD Micallef
 BLACK: 18 JB Cushman
 BLUE: 11 JB Micallef
 CHOC: 8 JD Micallef
 GRAY: 2 SD Bowers
 STEEL: 1 JD Bowers
 TORT: 16 SB McKinley

DATE: 5-21-94
 SHOW: Wasatch RBA
 WHERE: Salt Lake City, UT
 JUDGE: A Barr
 DUTCH: 17
 ALL WINNERS NM

 DUE TO AN OVERSIGHT ON MY PART, THE FINAL OPEN
 STANDINGS FOR 1993 WERE INCORRECT. KEVIN &
 VICKI BOGAN WERE OMITTED FROM THE LIST WHEN IN
 ACTUALITY THEY FINISHED IN 6TH PLACE. SORRY
 FOR ANY INCONVENIENCE THIS ERROR MAY HAVE CAU-
 SED. JEFF ANDREWS/SWEEPSTAKES



*** CORRECTED ***
 OPEN SWEEPSTAKES - 1993 FINAL STANDINGS

NAME	STATE	POINTS	# OF SHOWS
1. Emerson & Green	NY	14951	28
2. J & F Schettler	CA	12656	30
3. Kevin Hooper	OH	10792	26
4. Wenton Carlton	AZ	9353	28
5. Charles Christ	AZ	7341	23
6. K & V Bogan	OH	7171	29
7. Dana Dowd	IA	5721	17
8. Robin Hessick	OH	5406	16
9. Faye Scheef	NE	5327	29
10. Ricky Wood	VA	5285	26
11. Ed Hewson	IN	5248	19
12. Valerie Dahl	CT	5184	23
13. G & J Dobson	CA	5170	16
14. R & K Shull	IN	5057	28
15. M & J Mills	TX	5021	24
16. D & K Gates	WI	4815	23
17. Tracy Robinson	CA	4498	24
18. Joanne Purpus	CA	3843	13
19. L & D Bengtson	MN	3831	25
20. Wayne MacKinnon	MA	3828	10

YOUTH SHOW REPORTS

DATE: 12-4-93
 SHOW: Inland Empire Youth RA
 WHERE: Pomona, CA
 JUDGE: D Tschantz
 DUTCH: 31
 BOB: Blue SD Keegan
 BOS: Tort SB Zimmerman
 BLACK: 10 SD NM
 BLUE: 6 SD Keegan
 CHOC: 2 SD NM
 TORT: 5 SB Zimmerman
 STEEL: 4 SB Keegan
 GRAY: 4 SB Keegan

DATE: 2-12-94
 SHOW: Rogers Co 4-H Hare Raisers
 WHERE: Claremore, OK
 JUDGE: D Kroenke
 DUTCH: 3
 ALL WINNERS NM

DATE: 2-13-94
 SHOW: Lakeland RBA
 WHERE: Elkhorn, WI
 JUDGE: M Wunderlin
 DUTCH: 21
 BOB: Blue SB Anderson's Rabbits
 BOS: Blue SD Anderson's Rabbits
 BLACK: 6 SB NM
 BLUE: 12 SB Anderson's Rabbits
 GRAY: 1 SB Aisbet
 TORT: 2 SB Aisbet

DATE: 2-19-94
 SHOW: Olympic R&C Fanciers
 WHERE: Chehalis, WA
 JUDGE: V Palmblad
 DUTCH: 25
 BOB: Tort SB Widrig
 BOS: Blk JD NM
 BLACK: 11 JD NM
 BLUE: 5 SB NM
 CHOC: 2 SB O'Brien
 TORT: 7 SB Widrig

DATE: 2-20-94
 SHOW: Freestate Domestic RC
 WHERE: Gaithersburg, MD
 JUDGE: F DelMastro
 DUTCH: 13
 BOB: Blk SD Mickey
 BOS: Blk SB NM
 BLACK: 5 SD Mickey
 BLUE: 3 SD Wilson
 CHOC: 1 SB NM
 GRAY: 2 SB NM
 STEEL: 1 SB NM
 TORT: 1 JD NM

DATE: 2-20-94
 SHOW: Natividad 4-H RP
 WHERE: Monterey, CA
 JUDGE: S Byrom
 DUTCH: 53
 BOB: Gray SB K/Williamson
 BOS: Blk JD K/Williamson
 BLACK: 14 JD K/Williamson
 BLUE: 18 SD Hunzie
 CHOC: 6 JD Uchiyama
 TORT: 4 JD K/Williamson
 STEEL: 1 SD K/Williamson
 GRAY: 10 SB K/Williamson

DATE: 2-20-94
 SHOW: Cumberland Co RBA
 WHERE: Portland, ME
 JUDGE: A Platt
 DUTCH: 22
 BOB: Blk SB Rice
 BOS: Steel SD Lamond
 BLACK: 9 SB Rice
 CHOC: 4 SD Coy
 TORT: 7 SB Coy
 STEEL: 1 SD Lamond
 GRAY: 1 SB Lamond

DATE: 2-26-94
 SHOW: Rochester Area RC
 WHERE: Rochester, MN
 JUDGE: R Goedderz
 DUTCH: 31
 BOB: Tort JD Wenger
 BOS: Blue SB Freiberg
 BLACK: 8 SD Deplazes
 BLUE: 6 SB Freiberg
 CHOC: 9 JD Wenger
 GRAY: 4 JD Wenger
 TORT: 4 JD Wenger

DATE: 2-27-94
 SHOW: Eastern Maine RBA
 WHERE: Carmel, ME
 JUDGE: A Burke
 DUTCH: 12
 BOB: Blk SD Craig
 BOS: Blk SB Craig
 BLACK: 4 SD Craig
 CHOC: 2 SD Lamond
 GRAY: 1 SB Lamond
 STEEL: 1 SD Lamond
 TORT: 4 SB Lamond

DATE: 2-27-94
 SHOW: Western IL RBA
 WHERE: Galva, IL
 JUDGE: M Avesing
 DUTCH: 42
 BOB: Blk JB NM
 BOS: Blk JD NM
 BLACK: 17 JB NM
 BLUE: 12 SB NM
 CHOC: 3 SB Woods
 TORT: 6 SB NM
 STEEL: 2 SD Woods
 GRAY: 2 SD Woods

DATE: 2-27-94
 SHOW: Jamul Harebrains
 WHERE: Del Mar, CA
 JUDGE: A Barr
 DUTCH: 20
 BOB: Gray JD NM
 BOS: Blk JB Miskell
 BLACK: 8 JB Miskell
 BLUE: 6 SD NM
 CHOC: 2 SB Kapelczak
 TORT: 2 JB Miskell
 GRAY: 2 JD NM

DATE: 3-5-94
 SHOW: Sonoma Co 4-H RR
 WHERE: Santa Rosa, CA
 JUDGE: B Brown
 DUTCH: 55
 BOB: Blue SD Hunzie
 BOS: Blue SB Hunzie
 BLACK: 19 SB NM
 BLUE: 19 SD Hunzie
 CHOC: 2 JD NM
 TORT: 1 SD NM
 STEEL: 4 SD Hixon
 GRAY: 10 SB NM

DATE: 3-5-94
 SHOW: Noble Co RFC
 WHERE: Columbia City, IN
 JUDGE: Dr T Reed
 DUTCH: 71
 BOB: Blue SB S&M Snyder
 BOS: Choc SD S&M Snyder
 BLACK: 15 SB S&M Snyder
 BLUE: 12 SB S&M Snyder
 CHOC: 10 SD S&M Snyder
 TORT: 22 SB Hurst
 STEEL: 5 SD NM
 GRAY: 7 JB NM

DATE: 3-5-94
 SHOW: Central Florida RBA
 WHERE: Orlando, FL
 JUDGE: M Cummings
 DUTCH: 15
 BOB: Gray SB Dallison
 BOS: Blk SD NM
 BLACK: 5 SD NM
 BLUE: 7 JD Dallison
 CHOC: 2 JD NM
 GRAY: 1 SB Dallison

DATE: 3-5-94
 SHOW: Michigan State Yth Conv.
 WHERE: East Lansing, MI
 JUDGE: J Weltevreden
 DUTCH: 47
 BOB: Blk SB Regelin
 BOS: Gray SD NM
 BLACK: 20 SB Regelin
 BLUE: 5 SB Gottschalk
 CHOC: 9 SB Darling
 GRAY: 9 SD NM
 STEEL: 2 SB Haase
 TORT: 2 SB Gottschalk

DATE: 3-5-94
 SHOW: Hunt Co RBA
 WHERE: Greenville, TX
 JUDGE: M Crawford
 DUTCH: 14
 BOB: Blk JB NM
 BOS: Tort SD NM
 BLACK: 3 JB NM
 CHOC: 1 JB Marney
 GRAY: 3 SD NM
 STEEL: 2 JB NM
 TORT: 5 JB NM

DATE: 3-5-94
 SHOW: Southern Indiana RBA
 WHERE: Charlestown, IN
 JUDGE: B Patrick
 DUTCH: 4
 BOB: Blk SD Mueller
 BOS: Blk SB NM
 BLACK: 2 SD Mueller
 BLUE: 2 SB Mueller

YOUTH SHOW REPORTS

DATE: 3-6-94
 SHOW: Tri County RBA
 WHERE: Hanson, MA
 JUDGE: S Rizzo
 DUTCH: 51
 BOB: Blk SD Sugalski
 BOS: Tort SB Coy
 BLACK: 24 SD Sugalski
 BLUE: 6 SB NM
 CHOC: 12 SD Sugalski
 TORT: 9 SB Coy

DATE: 3-12-94
 SHOW: Long Island RBA
 WHERE: Franklin Square, NY
 JUDGE: P Jurgelonis
 DUTCH: 5
 BOB: Blk SD Gittleman
 BOS: Tort SB Gittleman
 BLACK: 2 SD Gittleman
 GRAY: 1 Elim
 TORT: 2 SD Gittleman

DATE: 3-12-94
 SHOW: Upper Midwest Dutch RC
 WHERE: Jefferson, WI
 JUDGE: B Koch
 DUTCH: 62
 BOB: Blk SB Anderson's Rabbits
 BOS: Blk SD Krall
 BLACK: 24 SB Anderson's Rabbits
 BLUE: 11 SB Anderson's Rabbits
 CHOC: 8 JD Wenger
 TORT: 11 SD Wenger
 STEEL: 2 SD N&D Blaauw
 GRAY: 6 JD Larson

DATE: 3-12-94
 SHOW: Great W. Lvstk Show
 WHERE: Tulare, CA
 JUDGE: M Lovejoy
 DUTCH: 47
 BOB: Blue SD B/Williamson
 BOS: Blk SB NM
 BLACK: 11 SB NM
 BLUE: 18 SD B/Williamson
 CHOC: 8 SB NM
 GRAY: 5 SB K/Williamson
 STEEL: 2 SB NM
 TORT: 3 SD K/Williamson

DATE: 3-12-94
 SHOW: Shingle Springers YC
 WHERE: Shingle Springs, CA
 JUDGE: B Brown
 DUTCH: 8
 ALL WINNERS NM

DATE: 3-13-94
 SHOW: Badger RBA
 WHERE: Jefferson, WI
 JUDGE: M Wunderlin
 DUTCH: 72
 BOB: Blue SD T/Anderson
 BOS: Blue SB M/Anderson
 BLACK: 26 SD M/Anderson
 BLUE: 14 SD T/Anderson
 CHOC: 8 JB N&D Blaauw
 GRAY: 8 SB Aisbet
 STEEL: 2 JD Stankowski
 TORT: 14 SB NM

DATE: 3-13-94
 SHOW: Ontario Area RBA
 WHERE: Pomona, CA
 JUDGE: E Hord
 DUTCH: 13
 BOB: Blk SB Bell
 BOS: Gray JD Bell
 BLACK: 6 SB Bell
 BLUE: 2 SB B/Miskell
 GRAY: 5 JD Bell

DATE: 3-13-94
 SHOW: Ohio Valley RBA
 WHERE: Hamilton, OH
 JUDGE: T Fender
 DUTCH: 28
 BOB: Blue SD M.Longshore
 BOS: Blk SB Schomaker
 BLACK: 10 SB Schomaker
 BLUE: 8 SD M.Longshore
 CHOC: 1 SB NM
 GRAY: 4 SB Hardin
 STEEL: 4 SB B.Longshore
 TORT: 1 SB B.Longshore

DATE: 3-13-94
 SHOW: Butler Co RBA
 WHERE: Butler, PA
 JUDGE: D Gehr
 DUTCH: 47
 BOB: Blk SB Harbin
 BOS: Blue SD Harbin
 BLACK: 22 SB Harbin
 BLUE: 10 SD Harbin
 CHOC: 6 SD Glenn
 TORT: 8 SB Ruggiero
 GRAY: 1 SB Ruggiero

DATE: 3-19-94
 SHOW: So Central Iowa RBA
 WHERE: Winterset, IA
 JUDGE: W Grebner
 DUTCH: 68
 BOB: Tort SB Jones
 BOS: Steel SD McCune
 BLACK: 30 JB McCune
 BLUE: 11 SB Freiberg
 CHOC: 7 SD McCune
 TORT: 9 SB Jones
 STEEL: 2 SD McCune
 GRAY: 9 SB Jones

DATE: 3-19-94
 SHOW: Ventura Co RBA
 WHERE: Ventura, CA
 JUDGE: J Shults
 DUTCH: 32
 BOB: Steel JD NM
 BOS: Blk JB McGray
 BLACK: 12 SD A/Miskell
 BLUE: 6 SB B/Miskell
 CHOC: 4 SD NM
 TORT: 7 JB A/Miskell
 STEEL: 2 JB Puente
 GRAY: 7 JD NM

DATE: 3-19-94
 SHOW: RP of Alabama
 WHERE: Florence, AL
 NO DUTCH SHOWN

DATE: 3-19-94
 SHOW: Southwest LA RBA
 WHERE: Iowa, LA
 JUDGE: M Henry
 DUTCH: 15
 ALL WINNERS NM

DATE: 3-19-94
 SHOW: Capital City RBA
 WHERE: Frankfort, KY
 JUDGE: R Mauck
 DUTCH: 4
 BOB: Blue SB Mueller
 BOS: Blk SD Mueller
 BLACK: 2 SD Mueller
 BLUE: 1 SB Mueller
 GRAY: 1 JD NM

DATE: 3-19-94
 SHOW: N. Central Indiana RBA
 WHERE: Goshen, IN
 JUDGE: W Bouwkamp
 DUTCH: 57
 BOB: Steel JD NM
 BOS: Blue SB K.O'Dell
 BLACK: 17 JB NM
 BLUE: 13 JD K.O'Dell
 TORT: 19 SB Hurst
 STEEL: 3 JD NM
 GRAY: 5 JB NM

DATE: 3-20-94
 SHOW: Williams Co RBA
 WHERE: Montpelier, OH
 JUDGE: J Frizzell
 DUTCH: 22
 BOB: Blue SB MN
 BOS: Blue SD Reynolds
 BLACK: 9 JD Regelin
 BLUE: 5 SB NM
 CHOC: 3 SD Rowen
 STEEL: 1 SD Rowen
 GRAY: 4 SD Rowen

DATE: 3-20-94
 SHOW: Tibbar RBA
 WHERE: New Lenox, IL
 JUDGE: R Riddle
 DUTCH: 31
 BOB: Blue SB NM
 BOS: Blk SD NM
 BLACK: 8 SD NM
 BLUE: 6 SB NM
 CHOC: 4 SD Woods
 TORT: 9 JD Meyer
 STEEL: 3 SB Woods
 GRAY: 1 SD Woods

DATE: 3-20-94
 SHOW: Natividad 4-H RP
 WHERE: Atascadero, CA
 JUDGE: S Byrom
 DUTCH: 45
 BOB: Blk JB B&T Lugo
 BOS: Blue SD Hunzie
 BLACK: 12 JB B&T Lugo
 BLUE: 16 JB Toth
 CHOC: 10 SB Uchiyama
 GRAY: 5 JB B&T Lugo
 STEEL: 1 JD NM
 TORT: 1 SB Erden

YOUTH SHOW REPORTS

DATE: 3-26-94
 SHOW: St Louis Area R&CBA
 WHERE: Troy, MO
 JUDGE: B Rice
 DUTCH: 4
 BOB: Choc JB Northcutt
 BOS: Choc JD Northcutt
 BLACK: 1 SD Northcutt
 CHOC: 3 JB Northcutt

DATE: 3-26-94
 SHOW: Empire State RBA
 WHERE: Fulton, NY
 JUDGE: B Burdick
 DUTCH: 10
 ALL WINNERS NM

DATE: 3-26-94
 SHOW: Central Valley RBA
 WHERE: Hanford, CA
 JUDGE: C Zemny
 DUTCH: 32
 BOB: Blue JB Williamson
 BOS: Blue SD Hunzie
 BLACK: 7 JB B&T Lugo
 BLUE: 14 JB Williamson
 CHOC: 5 JD Uchiyama
 GRAY: 5 JD Riley
 STEEL: 1 SB NM

DATE: 3-26-94
 SHOW: Furry Friends 4-H Club
 WHERE: Creamery, PA
 JUDGE: A Butler
 DUTCH: 8
 BOB: Gray JD Duenas
 BOS: Blk JB Horn
 BLACK: 6 JB Horn
 BLUE: 1 SB Gittleman
 GRAY: 1 JD Duenas

DATE: 3-26-94
 SHOW: Southern University
 WHERE: Baton Rouge, LA
 JUDGE: R Brewer
 DUTCH: 22
 ALL WINNERS NM

DATE: 3/26-3/27/94
 SHOW: Texas RBA
 WHERE: Belton, TX
 JUDGE: W Gibson
 DUTCH: 19
 ALL WINNERS NM

DATE: 3-27-94
 SHOW: Mass. Fed of R & CC
 WHERE: Taunton, MA
 JUDGE: L Benoit
 DUTCH: 29
 BOB: Blk SD Jacobs
 BOS: Blk SB Jacobs
 BLACK: 15 SD Jacobs
 CHOC: 4 SB Jacobs
 TORT: 10 SD Jacobs

DATE: 3-27-94
 SHOW: Capital City RC
 WHERE: Lawrence, KS
 JUDGE: R Dickerson
 DUTCH: 11
 ALL WINNERS NM

DATE: 3-27-94
 SHOW: Busy Bunnies YC
 WHERE: Springfield, OH
 JUDGE: H Keller
 DUTCH: 27
 BOB: Blk SB NM
 BOS: Blue SD NM
 BLACK: 10 SB NM
 BLUE: 6 SD NM
 CHOC: 3 SB NM
 TORT: 1 SB B/Longshore
 STEEL: 5 SB B/Longshore
 GRAY: 2 SB Hardin

DATE: 4-2-94
 SHOW: Hoosier Dutch RF
 WHERE: Lafayette, IN
 JUDGE: D Hauser
 DUTCH: 32
 BOB: Blk SD NM
 BOS: Choc SB H/O'Dell
 BLACK: 6 SD NM
 BLUE: 8 JD K/O'Dell
 CHOC: 6 SD H/O'Dell
 GRAY: 4 JB NM
 STEEL: 3 JD NM
 TORT: 5 JD S&M Snyder

DATE: 4-2-94
 SHOW: Golden Prairie RBA
 WHERE: Lafayette, IN
 JUDGE: G Raiser
 DUTCH: 32
 BOB: Blk SB S&M Snyder
 BOS: Steel JD NM
 BLACK: 6 SB S&M Snyder
 BLUE: 7 JD K/O'Dell
 CHOC: 6 SB H/O'Dell
 TORT: 4 SD NM
 STEEL: 4 JD NM
 GRAY: 5 JB NM

DATE: 4-2-94
 SHOW: NE Tower on the Plains
 WHERE: Seward, NE
 JUDGE: D Jackson
 DUTCH: 19
 BOB: Blk SB NM
 BOS: Choc JD NM
 BLACK: 12 SB NM
 BLUE: 1 SD Kosmos
 CHOC: 4 SB NM
 STEEL: 1 SB NM
 TORT: 1 SB NM

DATE: 4-2-94
 SHOW: Crossroads RBA
 WHERE: Stateville, NC
 JUDGE: B Rice
 DUTCH: 1
 WINNER NM

DATE: 4-9-94
 SHOW: Midway RB & FA
 WHERE: Valdosta, GA
 JUDGE: M Cummings
 DUTCH: 6
 BOB: Gray SB Dallison
 BOS: Blue JD Dallison
 BLACK: 3 SB NM
 BLUE: 1 JD Dallison
 GRAY: 1 SB Dallison

DATE: 4-9-94
 SHOW: Tri County RBA
 WHERE: Jefferson, WI
 JUDGE: O Yates
 DUTCH: 15
 BOB: Tort SB Aisbet
 BOS: Choc SD N&D Blaauw
 BLACK: 6 SB N&D Blaauw
 BLUE: 2 JB NM
 CHOC: 2 SD N&D Blaauw
 TORT: 1 SB Aisbet
 STEEL: 1 SD N&D Blaauw
 GRAY: 3 SB Aisbet

DATE: 4-9-94
 SHOW: Upper Midwest Dutch RC
 WHERE: St Charles, MN
 JUDGE: C Stelloh
 DUTCH: 25
 BOB: Blue JD NM
 BOS: Choc JB NM
 BLACK: 4 SD Wenger
 BLUE: 5 JD NM
 CHOC: 5 JD Wenger
 TORT: 7 SD Wenger
 GRAY: 4 JD Larson

DATE: 4-9-94
 SHOW: Huntington RBA
 WHERE: Columbia City, IN
 JUDGE: D Hauser
 DUTCH: 4
 ALL WINNERS NM

DATE: 4-10-94
 SHOW: Western Mass RBA
 WHERE: Chicopee, MA
 JUDGE: D LaRochelle
 DUTCH: 36
 BOB: Blk SB Sugalski
 BOS: Blk SD Sugalski
 BLACK: 17 SB Sugalski
 BLUE: 8 SB Sugalski
 CHOC: 8 SB Sugalski
 TORT: 2 SB Coy
 STEEL: 1 SB NM

DATE: 4-10-94
 SHOW: Mississippi Valley RBA
 WHERE: DeWitt, IA
 JUDGE: R Steinberg
 DUTCH: 22
 BOB: Gray SB Jones
 BOS: Gray SD Jones
 BLACK: 8 SB Weston
 BLUE: 6 SB Freiberg
 CHOC: 3 SB Jones
 GRAY: 3 SB Jones
 TORT: 2 SB Jones

DATE: 4-10-94
 SHOW: Tri County RBA
 WHERE: Jefferson, WI
 JUDGE: R Riddle
 DUTCH: 25
 BOB: Tort SB Aisbet
 BOS: Choc SD N&D Blaauw
 BLACK: 8 SB Aisbet
 BLUE: 5 SB Anderson
 CHOC: 2 SD N&D Blaauw
 TORT: 6 SB Aisbet
 STEEL: 1 SD N&D Blaauw
 GRAY: 3 JB N&D Blaauw

YOUTH SHOW REPORTS

DATE: 4-10-94
 SHOW: Springfield RBC
 WHERE: Springfield, IL
 JUDGE: Dr T Reed
 DUTCH: 50
 BOB: Blue SB Finkenbinder
 BOS: Blk SD NM
 BLACK: 22 SB NM
 BLUE: 6 SB Finkenbinder
 CHOC: 4 JB Northcutt
 TORT: 11 JB Meyer
 STEEL: 5 JB Woods
 GRAY: 2 JD Woods

DATE: 4-16-94
 SHOW: S. Central Michigan RC
 WHERE: Mason, MI
 JUDGE: W Bouwkamp
 DUTCH: 11
 BOB: Blk SB Regelin
 BOS: Blk JD Regelin
 BLACK: 8 SB Regelin
 BLUE: 1 SD Regelin
 CHOC: 1 Regelin
 TORT: 1 SB Regelin

DATE: 4-16-94
 SHOW: California State Conv.
 WHERE: Tulare, CA
 JUDGE: J Milburn
 DUTCH: 99
 BOB: Gray JD Bell
 BOS: Tort JB A/Miskell
 BLACK: 26 SB A/Miskell
 BLUE: 25 SD Hunzle
 CHOC: 9 SB Uchiyama
 GRAY: 20 JD Bell
 STEEL: 5 SB NM
 TORT: 14 JB A/Miskell

DATE: 4-16-94
 SHOW: Hoosier Dutch RF
 WHERE: Connersville, IN
 JUDGE: T Fender
 DUTCH: 18
 BOB: Blue JB Schomaker
 BOS: Blk SD NM
 BLACK: 4 SD NM
 BLUE: 2 JB Schomaker
 CHOC: 1 SD NM
 GRAY: 4 SB NM
 STEEL: 7 JD NM

DATE: 4-16-94
 SHOW: Cattaraugus Co RBA
 WHERE: Olean, NY
 JUDGE: C Hayhow
 DUTCH: 9
 ALL WINNERS NM

DATE: 4-16-94
 SHOW: Whitewater Valley RBA
 WHERE: Connersville, IN
 JUDGE: G Judy
 DUTCH: 28
 BOB: Blue JB Schomaker
 BOS: Steel JD Schomaker
 BLACK: 9 SD NM
 BLUE: 5 JB Schomaker
 CHOC: 1 SD NM
 GRAY: 6 SB Schomaker
 STEEL: 7 SB Schomaker

DATE: 4-16-94
 SHOW: East Ohio RB
 WHERE: Cortland, OH
 JUDGE: W Davis
 DUTCH: 17
 BOB: Blue SD Harbin
 BOS: Choc SB Hardy
 BLACK: 11 SB NM
 BLUE: 3 SD Harbin
 CHOC: 3 JD Hardy

DATE: 4-16-94
 SHOW: San Antonio RBA
 WHERE: Sequin, TX
 NO DUTCH SHOWN

DATE: 4-16-94
 SHOW: South Florida RBA
 WHERE: Tampa, FL
 JUDGE: C Haaf
 DUTCH: 8
 ALL WINNERS NM

DATE: 4-16-94
 SHOW: San Antonio RBA
 WHERE: Sequin, TX
 JUDGE: F Farrow
 DUTCH: 2
 WINNER NM

DATE: 4-16-94
 SHOW: Oregon League of R&CB
 WHERE: Eugene, OR
 JUDGE: J Coffelt
 DUTCH: 1
 BOB: Gray SB M/Reeves
 GRAY: 1 SB M/Reeves

DATE: 4-17-94
 SHOW: Decatur Area RBA
 WHERE: Decatur, IL
 JUDGE: G Carr
 DUTCH: 20
 BOB: Choc SD Woods
 BOS: Steel JB Woods
 BLACK: 4 JD NM
 BLUE: 2 SB Woods
 CHOC: 3 SD Woods
 TORT: 5 SD Woods
 STEEL: 5 JB Woods
 GRAY: 1 SD Woods

DATE: 4-17-94
 SHOW: California State RBA
 WHERE: Tulare, CA
 JUDGE: D Matthews
 DUTCH: 77
 BOB: Gray JD Bell
 BOS: Tort JB A/Miskell
 BLACK: 22 SB NM
 BLUE: 21 SB Worley
 CHOC: 9 JB NM
 GRAY: 13 JD Bell
 STEEL: 2 JB Hixon
 TORT: 10 JD NM

DATE: 4-17-94
 SHOW: Pasadena RBA
 WHERE: Pasadena, TX
 NO DUTCH SHOWN

DATE: 4-17-94
 SHOW: Fairfield Co RBA
 WHERE: Fairfield, CT
 JUDGE: P Jurgelonis
 DUTCH: 23
 BOB: Blk JD Coy
 BOS: Blk SB Kroeger
 BLACK: 7 JD Coy
 BLUE: 10 SB Kroeger
 CHOC: 5 SD Coy
 TORT: 1 SB Coy

DATE: 4-17-94
 SHOW: Whitewater Valley RBA
 WHERE: Connersville, IN
 JUDGE: K Cunningham
 DUTCH: 8
 ALL WINNERS NM

DATE: 4-17-94
 SHOW: Portsmouth RBA
 WHERE: Lucasville, OH
 JUDGE: W Davis
 DUTCH: 4
 ALL WINNERS NM

DATE: 4-23-94
 SHOW: Placer Co 4-H RS
 WHERE: Roseville, CA
 JUDGE: S Brown
 DUTCH: 19
 BOB: Blk SB NM
 BOS: Blk SD T/Whalen
 BLACK: SB NM
 BLUE: 2 SD Lewis
 CHOC: 6 SD NM
 GRAY: 3 JD NM

DATE: 4-23-94
 SHOW: Madison County RC
 WHERE: Alexandria, IN
 JUDGE: T Thomas
 DUTCH: 13
 BOB: Blk SB NM
 BOS: Blk SD NM
 BLACK: 6 SB NM
 BLUE: 1 SB Kilander
 TORT: 1 JB NM
 STEEL: 2 SD Kilander
 GRAY: 3 SB Kilander

DATE: 4-23-94
 SHOW: New England R&CSC
 WHERE: No Haven, CT
 JUDGE: L Benoit
 DUTCH: 21
 BOB: Blk JD NM
 BOS: Blk JB Horn
 BLACK: 6 JD NM
 BLUE: 11 SD Kroeger
 CHOC: 3 SD S/Green
 GRAY: 1 SD Eliminated

DATE: 4-23-94
 SHOW: Carolina Mountain RBA
 WHERE: Waynesville, NC
 JUDGE: R Waggoner
 DUTCH: 23
 BOB: Blk JB Mullinax
 BOS: Blue JD NM
 BLACK: 13 JB Mullinax
 BLUE: 5 JD NM
 GRAY: 1 JD Mullinax
 TORT: 2 SB Mullinax

YOUTH SHOW REPORTS

DATE: 4-23-94
 SHOW: Oklahoma RBA
 WHERE: Norman, OK
 JUDGE: S Freed
 DUTCH: 2
 WINNER NM

DATE: 4-23-94
 SHOW: South Texas RBA
 WHERE: Yoakum, TX
 NO DUTCH SHOWN

DATE: 4-23-94
 SHOW: Jackson Purchase RBC
 WHERE: Hopkinville, KY
 JUDGE: R Roehr
 DUTCH: 2
 WINNER NM

DATE: 4-23-94
 SHOW: Centennial R&CBA
 WHERE: Norman, OK
 JUDGE: CM Carroll
 DUTCH: 2
 WINNER NM

DATE: 4-24-94
 SHOW: Lake Erie RB
 WHERE: Oak Harbor, OH
 JUDGE: M Henry
 DUTCH: 22
 BOB: Blk SB Regelin
 BOS: Blue SD Regelin
 BLACK: 8 SB Regelin
 BLUE: 4 SD Regelin
 CHOC: 7 SD NM
 GRAY: 1 SB NM
 STEEL: 1 SD Fried
 TORT: 1 SB Regelin

DATE: 4-24-94
 SHOW: Central Wisc. RBA
 WHERE: Marshfield, WI
 JUDGE: M Wunderlin
 DUTCH: 35
 BOB: Blue SB T&M Anderson
 BOS: Blue SD M/Anderson
 BLACK: 12 JB M/Anderson
 BLUE: 14 SB T&M Anderson
 CHOC: 1 SD Wenger
 STEEL: 2 D Stankowski
 TORT: 6 SB NM

DATE: 4-24-94
 SHOW: Cedar Rapids RB
 WHERE: Central City, IA
 JUDGE: R Dickerson
 DUTCH: 31
 BOB: Tort SB Jones
 BOS: Blk JD Weston
 BLACK: 11 SB Jones
 BLUE: 7 SD Weston
 CHOC: 5 SD Jones
 TORT: 4 SB Jones
 STEEL: 1 SD McCune
 GRAY: 3 SB Jones

DATE: 4-24-94
 SHOW: Mills County RBA
 WHERE: Thurman, IA
 JUDGE: D Kroenke
 DUTCH: 11
 ALL WINNERS NM

DATE: 4-24-94
 SHOW: Central ME RBA
 WHERE: Richmond, ME
 JUDGE: C Howell
 DUTCH: 23
 BOB: Choc SD Coy
 BOS: Blk SB Rice
 BLACK: 11 SD Craig
 CHOC: 3 SD Coy
 TORT: 7 SB Coy
 STEEL: 1 SD Lamond
 GRAY: 1 SB Lamond

DATE: 4-30-94
 SHOW: Hop To It RC
 WHERE: Hutchinson, MN
 JUDGE: R Goedderz
 DUTCH: 26
 BOB: Blk SD Wenger
 BOS: Gray SB NM
 BLACK: 5 SD Wenger
 BLUE: 3 SB Wenger
 CHOC: 3 SB Larson
 TORT: 8 SD Wenger
 GRAY: 7 SB NM

DATE: 4-30-94
 SHOW: Jacksonville RBA
 WHERE: Green Cove Springs, FL
 JUDGE: D Burchfield
 DUTCH: 11
 BOB: Gray SB Dallison
 BOS: Blk JD Dallison
 BLACK: 5 JD Dallison
 BLUE: 2 JD Dallison
 GRAY: 4 SB Dallison

DATE: 4-30-94
 SHOW: Van Wert Youth RC
 WHERE: Van Wert, OH
 JUDGE: R Allebach
 DUTCH: 24
 BOB: Blk SB NM
 BOS: Blk JD NM
 BLACK: 20 SB NM
 BLUE: 1 SD NM
 CHOC: 2 SB NM
 GRAY: 1 SD Reynolds

DATE: 4-30-94
 SHOW: Greater VT R&CBA
 WHERE: Rutland, VT
 JUDGE: P Jurgelonis
 DUTCH: 10
 ALL WINNERS NM

DATE: 4-30-94
 SHOW: National Dutch Show
 WHERE: Reading, PA
 JUDGE: B Butler
 DUTCH: 128
 BOB: Blk SD NM
 BOS: Blue SB S&M Snyder
 BLACK: 42 SD NM
 BLUE: 32 SB S&M Snyder
 CHOC: 25 JD Hardy
 TORT: 17 SB Hurst
 STEEL: 5 SD Mullinax
 GRAY: 7 SD Mullinax

DATE: 5-1-94
 SHOW: Oklahoma State RBA
 WHERE: Tulsa, OK
 NO DUTCH SHOWN

DATE: 5-1-94
 SHOW: Salt City RBA
 WHERE: Hutchinson, KS
 JUDGE: C Addison
 DUTCH: 19
 BOB: Blk JD NM
 BOS: Blk JB Hughes
 BLACK: 10 JD NM
 BLUE: 3 JD NM
 CHOC: 5 JD NM
 GRAY: 1 JD DQ

DATE: 5-1-94
 SHOW: Effingham RBA
 WHERE: Altamont, IL
 JUDGE: B Dodge
 DUTCH: 24
 BOB: Choc SD Woods
 BOS: Blk JB Woods
 BLACK: 7 JB Woods
 BLUE: 4 SD Woods
 CHOC: 3 SD Woods
 TORT: 4 JD Woods
 STEEL: 5 JB Woods
 GRAY: 1 SD Woods

DATE: 5-1-94
 SHOW: Waterloo Area RBA
 WHERE: Waterloo, IA
 JUDGE: S Zaruba
 DUTCH: 33
 BOB: Blue SB Frieberg
 BOS: Blk SD Jones
 BLACK: 14 SB Reimer
 BLUE: 11 SB Frieberg
 CHOC: 3 SB Jones
 TORT: 1 SB Jones
 STEEL: 1 SB Jones
 GRAY: 3 JB Reimer

DATE: 5-7-94
 SHOW: Central Texas RC
 WHERE: Giddings, TX
 JUDGE: M Etter
 DUTCH: 6
 ALL WINNERS NM

DATE: 5-7-94
 SHOW: Fruit Ridge RF
 WHERE: Hudsonville, MI
 JUDGE: J Weltevreden
 DUTCH: 10
 BOB: Blue SD Regelin
 BOS: Blk SB Regelin
 BLACK: 7 SB Regelin
 BLUE: 1 SD Regelin
 CHOC: 1 SD Regelin
 TORT: 1 SB Regelin

DATE: 5-14-94
 SHOW: Tipton Co RBA
 WHERE: Burlison, TN
 JUDGE: D Solomon
 DUTCH: 2
 WINNER NM

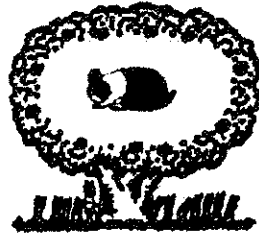
M - V RABBITRY

9/94

EVELYN CORN

195 Marguerite Street
Coal City, Il. 60416
Phone: 815-634-4568

Dutch
Mini Lops



*SNYDER FAMILY
DUTCH HUTCH*

Shanna and Mick Snyder
9441 W 1300 N
DeMotte, IN 46310
(219) 987-5710



**L'IL RED DUTCH HUTCH
GORDON & MARILYN
HAMERSLEY**

BREEDERS

24931 Woodfield School Rd.
Gaithersburg, Md. 20882
Phone: (301) 253-3716

10/94



BOB & Best Display '92 National Dutch Show
BOB & Best Display '92 ARBA Convention
BOB & Best Display '92 ISRBA Convention
1st Place National Dutch Sweepstakes 1992
1st Place Hoosier Dutch Sweepstakes 1992

12/94

**BERGENE
RABBITRY**



QUALITY DUTCH

also:

Palominos, Holland Lops, New Zealand Whites

30165 West 154th St.

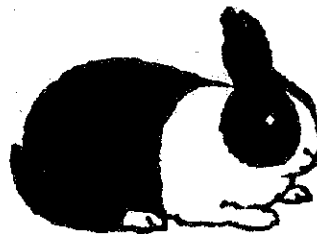
Gardner, KS 66030

3/94

(913) 884-2131



MULLINAX DUTCH



Black - Blue
Chocolate - Grey
Steel - Tortoise

WE
SHIP



REGISTERED, PEDIGREED, and GRAND CHAMPION STOCK

DEREK'S DUTCH



3/94

Specializing in Blue and Black Dutch Rabbits

Show Pet

Derek, Richard, and
Karen Sugalski

153 Old Westminster Rd.
Hubbardston, MA 01452

FRED, KATHY, and ABBY

105 A East View Drive
Lincolnton, North Carolina 28092
(704) 732-1554

YOU CAN'T BEAT THE DUTCH

(508) 928-4023

AMERICAN DUTCH RABBIT CLUB PUBLICITY ITEM ORDER FORM

NAME _____

ADDRESS _____

CITY _____ STATE _____ ZIP _____

PHONE _____

NAME OF ITEM	PRICE	QUANTITY	SIZE	COLOR	COST
Pedigree Book 50 pedigrees	6.50				
Arm Patches (Black/Blue/Chocolate)	3.00				
Dutch Decal (outside)	1.25				
Scratch Pads	1.25				
Caps - Dutch Motto (Black/Blue/	6.00				
Dutch Lapel Pin (Black/Blue/	2.00				
Child's T-Shirt (Dutch & Motto) White or Blue S - M - L	9.00				
Adult T-Shirt (Dutch & Motto) White or Blue S - M - L - XL	12.00				
Deck of Playing Cards	4.00				
Glass Cups (stackable) (Dutch)	4.50				
Adult Sweatshirts (Dutch) Gray S - M - L [special order] XL - XXL	22.00				
Glass Mugs (Dutch Emblem)	6.00				

Subtotal _____

10% Handling charge _____

TOTAL _____

Mail this form along with your check or money order to:

Barb & AJ Butler
 4310 Richville Dr. S.W.
 Canton, OH 44706
 Phone: 216-484-1977

PLEASE MAKE CHECKS PAYABLE TO
ADRC - PUBLICITY



SHOW SANCTION APPLICATION

Date of Show.....

Open ARBA Show Code #..... Youth ARBA Show Code #.....

Sponsoring Club.....

Location of Show.....

Show Secretary Name.....

Address.....

City.....State.....Zip.....

Enclose \$9.00 for an open ADRC sanction and \$6.00 for a youth ADRC sanction and mail to: The American Dutch Rabbit Club Norma Hart, Sec'y, 190 N First Ave Coal City, Illinois 60416 APPLY FOR SANCTIONS AT LEAST 60 DAYS PRIOR TO YOUR SHOW DATE

ADRC MEMBERSHIP APPLICATION/FEES

I hereby make application for membership in the AMERICAN DUTCH RABBIT CLUB, INC. and enclose the amount due for dues and fees. I agree, if accepted, to abide by the Constitution and By-Laws of this Organization and to further the interest of the American Dutch Rabbit Club in every way possible.

DATE.....ADULT.....YOUTH.....AGE.....

NAME.....

STREET ADDRESS.....

BOX NUMBER.....

CITY.....STATE.....ZIP.....

NEW..... RENEWAL..... RECOMMENDED BY.....

Membership Fees are: \$7.00 per adult \$9.00 Husband/Wife \$5.00 per youth

Life Mmembership may be purchased for 20 times the current adult membership fee. * Canadian Memberships MUST add an additional \$5.00 to cover mailing expenses. * Foreign Memberships MUST add an additional \$8.00 to cover mailing expenses. ALL FEES MUST BE PAID IN US FUNDS

YOU MAY HAVE YOUR DUTCH REPORTER MAILED TO YOU BY FIRST CLASS MAIL FOR AN ADDITIONAL \$5.00 FEE.

Send your membership application and correct fees to: The American Dutch Rabbit Club Norma Hart, Sec'y, 190 N First Ave Coal City, Illinois 60416

THE DUTCH REPORTER
Dick Gehr, Editor
190 N. First Ave.
Coal City, IL 60416

BULK RATE
U.S. Postage
PAID
Permit #6
Henry, Illinois

D American

U

T

C

NOTICE: BE CERTAIN TO CHECK
YOUR EXPIRATION DATE
LISTED ON YOUR LABEL
AND RENEW PROMPTLY.

S E N D T O:

H

You
Can't Beat
The Dutch

Rabbit Club