

Devoted to the interests of
the Dutch Breed
"America's Finest Rabbit"



THE DUTCH REPORTER

VOLUME 56 NO 2

APRIL/MAY/JUNE 2000

BEST OF BREED 2000 NATIONAL DUTCH SHOW YORK, PA.



Official newsletter of the American Dutch Rabbit Club

EICH'S RABBITRY

Top Quality Dutch FOR SALE

National Winners for over 50
years

Black-Blue-Chocolate-Tortoise



ROGER & BONNIE EICH
10148 Desert Hills Drive
Sun City, AZ 85351
(623)933-2357

6/00

BLTYHE'S DUTCH



Steve , Judy
Kristina & Michelle

ALL COLORS

32157 470th Ave. (605)624-2564
Burbank, South Dakota 57010

12/01



Spring



Hill Rabbitry

DUTCH & CHECKERED GIANTS

Rick & Julie Billups
488 Pratt Road
Blanchester, OH 45107
(937)655-8657
also: NPGA Registered
Show Quality Pigmy Goats



12/01

PREEDE'S QUALITY DUTCH

Specializing in Blacks and
Blues

Martin Preede
49 Addicks Road

Westwood, NJ 07695
(201)666-2683
mpreede@bellatlantic.net



3/01

FRAN, JIM, MATTHEW & KEVIN

SCHETTLER'S

DANVILLE RABBIT TREE
305 Romae Ct.
Danville, California 94526
510-838-8036

9/01

DUTCH - quality in all six colors

National wins in the last few years:

- Best of Breed** - 1997 National Dutch Show
- Best of Breed** - 1991 ARBA Convention
- Best Opposite of Breed** - 1993 NDS
- 1 - Best Black, Best Opp Blue, Best Fur
- 2 - Best Steel, Best Blue Display
- 3 - Best Chocolate, Best Blue, Best Opp Tortoise
- 1 - Best Opp Chocolate
- 2 - Best Brown Gray
- 1 - Best Opp Brown Gray
- 2 - Best Tortoise
- 1 - Best Tortoise Display
- 2 - Best Chocolate Display



TW RABBITRY WISE ACRES



Since 1979

DUTCH - All Colors
Janice & Tammy Wise

8633 Flick Road
Tipp City, Ohio 45371
(513) 667-6417

6/02

PRESIDENT:

Kevin Hooper (2002)
7661 State Route 350
New Vienna, OH 45159
(937)-987-2244 or khood1@juno.com



VICE-PRESIDENT:

Roger Guetschow(2000)
N259 Hopkins Rd.
Arlington, WI 53911
(608)-846-3708

SECRETARY-TREASURER:

Doreen Bengtson (2001)
Rt. 1 Box 95
Lewiston, MN 55952-9720
(507)864-2103 or
dbengt@rushford.polaristel.net (& always
send a copy to): DOREEN@SELCO.LIB.MN.US

DISTRICT 1 DIRECTORS:

Sue Peters (2000)
Rt 10 Box 458
Morgantown, WV 26505
(304)291-0111 or PENNSUE2@aol.com

Todd Uran (2001)
881 W 11th Ave
Columbus, OH 43212
(614)488-8656 or turan@checkfree.com

Martin Preede(2002)
49 Addicks Road
Westwood, NJ 07675-3507
(201)666-2683 or mpreede@bellatlantic.net

DISTRICT 2 DIRECTORS:

Sharon Mixdorf (2001)
1357 Huntington Rd.
Waterloo, IA 50701-3452
(319)234-6937

Sue Strandwitz
2655 Oakridge
Neenah, WI 54956
(920)729-9577
Bunnisoo@aol.com

Troy Ihrke (2000)
722 15th St SE
Owatonna, MN 55060-4175
(507)455-3291
t ihrkechoc@aol.com

DISTRICT 3 DIRECTORS:

Steve Blyth (2001)
R.R. 1 Box 25A
Burbank, SD 57010
(605)624-2564

Pete Nelsen (2002)
1625 99th Ave SE
Everett, WA 98205
(206)-334-2119
Petersrab@aol.com
Briony Barnes (2000)
5297 NW 10th
El Dorado, KS 67042
(316)752-3415
bunnybri@yahoo.com

www.dutchrabbit.com

DISTRICT 1 STATES:

CT, DE,FL, GA,ME,MD,MA,NH,NJ,NY,NC,OH,PA,RI,SC, VT, VA, WV

DISTRICT 2 STATES:

AL,AR,IL,IN,IA,KY,LA,MI,MN,MS,MO, TN, WI

DISTRICT 3 STATES:

AK,AZ,CA,CO,HI,ID,KS,MT,NE,NV,NM,ND,OK,OR,SD, TX,UT,WA, WY

SWEEPSTAKES OPEN & YOUTH:

Jeffrey Andrews
325 Hamilton St.
Albion, NY 14411
(716)589-4857 or jandrews@2ki.net

PUBLICITY DEPARTMENT:

Rick & Julie Billups
488 Pratt Road
Blanchester, OH 45107
(937)655-8657 jbillups@in-touch.net

DUTCH REPORTER EDITOR:

Julia Anderson
N7558 Boulder Drive
Portage, WI 53901
Phone 608-742-6526 jadredit@palacenet.net

DOMESTIC RABBITS REPORTER:

Robert Hanlon
27 N Pollard Dr.
Fulton, NY 13069
email Bunnyman01@aol.com
Send news by 5th of Feb, April, June, Aug,
Oct and Dec

YOUTH REP TO ADRC BOARD

Fritz Trybus
532 S Clinton
Oak Park, IL 60304
(708)524-0407
Trybunnies@aol.com

NEXT DUTCH REPORTER:

*Deadline: Aug 10: Articles needed on—
Getting your rabbitry ready for Winter.
Fall/Winter breeding.*

**Make plans to attend the ARBA
Convention this FALL!!**

HIGHLIGHTS

Director's Reportspgs 2-4
Going the Distance pg 5
Domestic Rabbits Reporterpg 6
Youth News pg 7
Local Dutch News pg 8
Rabbit cage ideaspg 9
Publicity order formpg 10
Resumespg 11
New Members pg 12
National showspg 14
ADRC board meeting pg 15
ADRC gen'l membership meetingpg16
NDS BOB winners pg 16
NDS BOS Open winner pg 17
NDS specials ads pg 18 - 23
Briony's show box pg pg 23
Seller's Class pg 24
NDS show reports pgs.....pgs 25-28
Standings pgs 29-31
Show reports pgs 32-47
ADRC financial report pgpg 37
Harlequin Dutch pg 47

ADVERTISEMENTS:

Inside covers: Bengtsons, Carlton, Eich, Peters,
Schettler, Strandwitz, Dobson, TW Wise,
Blythe,Preede,Billups

Andrews, Anderson.....pg 4
Caldwell./Lybargerpg 8
LDRC, Schwartz.....pg 9
Kennedy Rabbitry,OSDC, KDRC,Gilbert pg 13
Micallef, Ines pg 29
Hooper pg 30
McAtee, Mixdorf pg 32
Dangler, Wireman pg 34
Dowd pg 36
Bergene Rabbitry pg 47

ADVERTISING RATES:

	<i>SINGLE ISSUE</i>	<i>YEARLY</i>	<i>TWO Years</i>
Full Page	\$ 30.00	\$120.00	\$210.00
Half Page	\$ 20.00	\$ 80.00	\$140.00
Third Page	\$ 16.00	\$ 65.00	\$115.00
Fourth Page	\$ 12.00	\$ 48.00	\$ 81.00
Yearly Breeder Card	_____	\$ 18.00	\$ 32.00
Judge & Registrar Listing	_____	\$ 12.00	\$ 22.00
Booster Listing	_____	\$ 12.00	\$ 22.00
"FOR SALE" Listing	\$ 10.00	_____	_____

President's MESSAGE

The National Dutch show is history for this year. Congratulations to Rick and Julie Billups for their Best Dutch, Best Jr, and Best Sr awards. Congrats also to Kristina and Michelle Blythe with BOB, and Emily Smith with BOS in the youth. I had the honor of BOS in the open this year.

There were several challenges presented at the NDS this year. (The hired secretary didn't arrive until about 10 PM Friday - with the coop cards, paperwork etc.) This meant that the breeders were not sure which coops they were to put their Dutch in and This made for a large challenge of finding all of those Dutch that were to be in the coops for the classes. Thanks to all who pitched in and made it work. Hopefully Marty Preede and Mark Pecaric have recovered by now. Thanks for making it work.

We will be going to Illinois for the NDS in 2001. It will be in Springfield on April 20-22. This is a large facility with nice cooping and excellent lighting. The Board has agreed to allow the American Checker Giant National Show to be in the far end of the building. They will be separated from us and we will not have any interference from them. (They will only have about 250 Checkers). We don't look to having our NDS with other breeds in the future, but we will consider the bids as presented.

The Indiana group is looking at bidding for the 2002 NDS in Fort Wayne. The Washington State group is considering 2003, and the Ohio Dutch Club is looking at 2004. Nothing is set in stone past next year. We have not received any formal bids for those years yet. I would encourage those groups to submit formal bids as soon as possible as it would help the sponsoring clubs to have the show planned 2-3 years ahead, and it would help us to secure the judges that we want.

We will have a different Dutch breeder writing our articles for the upcoming Domestic Rabbits Magazine. Bob Hanlon

from New York has volunteered to do this for a while. If you have anything that you feel should be in the DR, send it to Bob.

The Club is doing very well financially the past few years. We have implemented some ideas that have maintained all benefits to the members while not costing us as much money. With that in mind, the Board decided to increase the sponsorship money for the ARBA Conventions from \$300 to \$500. This will help the hosting group to provide awards for open and youth. The raffle from the convention the few years has gone to fund the BIS account. (This is \$1000 for any Dutch that wins BIS at the ARBA Convention in open and \$500 for youth.) That account is fully funded. Now, the money from the raffle at the convention will go toward paying the booth rental for a larger booth, chairs carpet etc. The booth size at each convention will vary based on the location, but we will be trying for four spaces at our larger Conventions. Last year we set up a hospitality area in one booth for our members who needed to rest or just wanted to sit and talk. we also had donuts, punch, and even wine and cheese one evening. These things are for the all Members of the Dutch Club to enjoy.

If you are new to the Convention or the Dutch Club, make yourself known. I had a report from the convention last year that a new breeder felt unwelcome and that the Dutch breeders were stuck-up. The new breeder can get all of the help they want simply by asking. Granted, I know I am usually extremely busy at the Convention and I seldom can find a lot of time to talk. But, if the experienced breeders don't know you, and you don't make yourself known, then they will talk to those old friends that they have not seen for a year or so. All of our Dutch folks at the shows love to talk Dutch. If they don't know you, then they will talk Dutch to those who they do know.

The development of the Web site is still in progress. We now have someone who will

DISCLAIMER

Articles, statements, and opinions printed or expressed in the DR may not be those of the ADRC or the editor and are solely the responsibility of the authors.

do the maintenance of the site. We will let you know when we are up and running.

Congratulations to our latest inductees to the Dutch Hall of Fame ; Mike Stinehelfer of Ohio, and Alan Miller of Indiana.

Kevin Hooper
New Vienna, Ohio



Sec. MESSAGE

Dear Dutch Friends,
I will make this short to allow plenty of room for all the National Dutch Show information that you all will want to see. Many thanks to the Eastern Dutch Fanciers for hosting the 2000 National Dutch Show. It gets to be a big job when the entries keep on a coming. Congratulations to Rick and Julie for BOB and to Kevin for BOS. Thanks to everyone who helped get the show on the road. To the remark takers, the carriers, the judges and anyone else that pitched in to get the job done. Thanks to sellers class participants both buyers and sellers. You will find the report on that elsewhere in this DR. Thanks to all the Special Ads people. I have placed all the special ads from all the Dutch Reporters in a notebook and it is really interesting to look through that and see who attended the show and who won and who didn't. The specials ads help support the costs of the Dutch Reporter and we appreciate all those people that step up and contribute.

Please take a moment to read the board and general membership meeting minutes. It will help to keep up to the minutes on the actions of your representatives and fellow members.

Have a good summer,

Doreen Bengtson
Lewiston, Minnesota



DISTRICT ONE REPORTS

NEWS FROM SUE

Hi everyone,

Well, here it is — May already, and show season is in full swing here in the East. We had a mild winter, so there wasn't a lot of stress on the rabbits this winter, for which we are thankful.

We just returned from the National Dutch Show, and I want to thank everyone for the way they pitched in and helped. Putting on a national show is always a big job and the Dutch people were wonderful and helped in any way they could. I did want to mention, too, that I thought the banquet was well run, and the food was delicious. It was also very convenient to have the dining hall so close to the show room. It seems as though there is always more to do than time to do it in, so it was good not to have to travel to a banquet facility.

I also want to congratulate all of the winners. It was good to see Rick and Julie Billups win Best of Breed, and also want to congratulate Kevin Hooper for his Best Opposite of Breed win. I didn't see the list of the other winners, but there were really some nice rabbits there and all of the winners did well to come out on top with that kind of competition.

Penn and I attended the Blennerhasset and Southern West Virginia Clubs show yesterday. They combine their efforts each year and put on a very nice show. I want to congratulate Joe Henry on his Best in Show win. Joe has had a hard winter, healthwise, and was seriously considering getting out of rabbits. He sold off most of his blacks. When the doctors gave him a relatively clean bill of health this past week Joe decided to keep his chocolates, which are his favorites, a while longer to see how it goes. However yesterday Joe won Best in Show with a gorgeous little blue buck. Now Joe doesn't know what to do. I know one thing for sure — we can be looking for a real pretty blue buck at the National Convention in Columbus this fall! Congratulations on your win,

Joe. And we would love to keep you in Dutch!

Well, until next time, lots of luck to all of you with your spring shows!

Sue Peters
Morgantown, WV



NEWS FROM TODD

Well another National is over and it was a good one. The entry was large and there were a lot of great rabbits. The Eastern Dutch Club did a lot with what they had to work with and although we had a bumping start it all worked out in the end. I am sure that other clubs would have not been able to buckle down and get through it all as well as the Dutch club but it is not really a surprise that our club just got down to business and made it all work out. Congratulations to all the winners. Kevin and Rick have both worked very hard and both deserve to be at the top as they were this year.

It's now time to look toward the fall and what I am sure will be a large show in Columbus. I have still not finalized the breakfast but other than that things seem to be on track. If any would like to make donations for specials please let me know.

Thanks,

Todd Uran
Columbus, Ohio



DISTRICT TWO REPORTS

NEWS FROM SHARON

I wrote a different article on our computer, but when I tried to print, I was told that the program had done something illegal. So I lost that article. Now, two days later, it's back to good

old writing a letter.

The weather for our trip to and from Pennsylvania was terrific. We had fun at the show, but I definitely think the seller's class should not be done so late at night. No one seemed to want to bid. The banquet food was good and the building was right next to the showroom, was very fancy and nice. This was the first national show where Eric and I both agreed we never heard one sneezing rabbit. Maybe we were just too busy to see the rabbits. As usual Wayne MacKinnon did a wonderful job announcing the Hall of Fame winners.

At this show the actual ear numbers were used for judging instead of coop numbers. We all need to work at legible ear numbers. I saw one tattoo stamped 3 times into the ear and it still could not be read.

On our way home, we stopped at a signature Inn in Indiana. This is the same kind of motel that will be the headquarters at the 2001 NDS. It was very clean and nice and the staff was very friendly. We got to make our own waffles for breakfast. The rooms did have microwaves and refrigerators. According to a brochure all the motels have these.

Hope everyone can make it to Springfield, IL. In April 2001. First I'll see you all at Columbus, Ohio.

Sharon Mixdorf
Waterloo, Iowa



NEWS FROM STEVE

Hi Everyone. Just got back from the National Dutch Show in York, PA. Could have been too far, 1350 miles from South Dakota to PA. but it was worth it once we got there to see all the great people in Dutch rabbits.

Congratulation to Rick Billups and Kevin Hooper in the open BOB & BOS. My girls and Emily Smith — BOB & BOS in the Youth Show. Lots and lots of good rabbits in many of the classes it looked like to me.

I attended a local show yesterday – total rabbits looked very light, but Dutch rabbits had about 50. Jim Rydell won BOB with a good black sr. doe. We had BOS with a jr. choc. Buck.

Summer is coming quickly, so keep those bunnies cool. Get those bunnies in the nest boxes for Columbus, Ohio this Fall.

Hope to see you at upcoming shows and at Columbus this Fall.

Steve Blyth
Burbank, SD



DISTRICT THREE REPORTS

NEWS FROM BRIONY

Hi Dutch Breeders!

First of all it was great seeing everyone in Pennsylvania! Although the show was not without its glitches, everyone pulled together, helped out, and things turned out all right. After all, a flawed NDS is much better than no NDS!

I don't have much in the way of news to report. I have been to a few shows in the Kansas/Missouri area this spring. Open numbers seem to be on the rise with several people getting back into the show habit. Youth numbers have backslid a little but the breeders we do have seen very enthusiastic. Something I have not seen in a while is all six colors being exhibited at the shows but both Youth and Open are doing a good job of promoting all colors.

One of the topics for this Dutch Reporter is Tort breeding. I have been breeding Torts for nine years and they were the variety I started with. One of the first things people ask is "What is good Tort color?" The Standard calls for a bright orange with smoky blue shadings. There are a lot of discrepancies as to what is a good color on the rabbit. Most people agree that the "bright clean orange" would be the color of a pumpkin or maybe an orange crayon. What "smoky

blue" should look like is where differences come in. To me "smoky blue" is not cigarette smoke but oil fire smoke-thick, dark, and BLUE. My interpretation of the Standard is that we should have plenty of contrast in our Torts-bright top color and dark shadings. Getting this color sometimes requires mixing of shades. I have found that by using a bright, clean buck with some shadings on the head and not much on the hindquarters and a dark, smutty doe oftentimes I will get a rabbit with a clean, bright back and shadings that are dark but confined. Most of the dark, smutty does will also carry a better depth of color. When breeding for color an important thing to remember is NOT to go outside the tort color. There are so many different shades that whatever you need to complement your rabbits can be found within the variety.

Good luck to everyone with their rabbits during the summer, don't forget that plenty of cool, fresh water goes a long way!

Briony Barnes
ElDorado, KS



NEWS FROM STEVE

Hi Everyone. Just got back from the National Dutch Show in York, PA. Could have been too far, 1350 miles from South Dakota to PA. but it was worth it once we got there to see all the great people in Dutch rabbits.

Congratulation to Rick Billups and Kevin Hooper in the open BOB & BOS. My girls and Emily Smith – BOB & BOS in the Youth Show. Lots and lots of good rabbits in many of the classes it looked like to me.

I attended a local show yesterday – total rabbits looked very light, but Dutch rabbits had about 50. Jim Rydell won BOB with a good black sr. doe. We had BOS with a jr. choc. Buck.

Summer is coming quickly, so keep those bunnies cool. Get those bunnies in the nest boxes for Columbus, Ohio this Fall.

Hope to see you at upcoming shows and at Columbus this Fall.

Steve Blyth
Burbank, SD



Compliments of:

Julia Anderson
Mandy Bengtson



Support
the ADRC

3/01

J & R
RABBITRY
(716)589-4857



Pedigreed
Mini Lops & Dutch

Charles,
Jeff & Ruth
Andrews

325 Hamilton St.
Albion, NY 14411
email:
jandrews@2ki.net

12/01

GOING THE DISTANCE TO LOCAL AND NATIONAL SHOWS

Here in Arizona, show season is short due to few all breed clubs and six plus months of extreme heat over most of the state. In order to be competitive, Arizona breeders need to travel to California for a minimum of 5 to 12 hours from Phoenix for shows in Southern or Central California or New Mexico which is a minimum of 7 hours and a few hours more for the Southern Arizona (Tucson) breeders.

From Phoenix, it means some 5 hours crossing the desert west before temps moderate. Going to New Mexico, it is only 2 hours to cooler Flagstaff, but then many hours crossing the hot high desert to New Mexico. A reliable vehicle and powerful A.C. are indispensable. A Breakdown of either in the desert (which can be 120 degrees or more and seldom under than 100 degrees in the summer months of May to Oct) will result in certain death for all the rabbits. There are long stretches with no shade or water. On the California side, there are emergency telephones conveniently placed at brief intervals – still no guarantee that help would arrive in time. It is also possible to do some night driving to avoid the heat of the day and worst rays of the sun, but one must beware of becoming drowsy. In summer, it can still be over 100 degrees at midnight – but at least there is no sun.

There is a show somewhere in California almost every week. However, even with reliable transportation and bring-

**Support
your local
Dutch Club**

ing some food along, the cost of travel is still prohibitive. Gasoline prices are higher than overnight at least one night. It helps if there are friends of family with whom to stay. Even Motel 6 is no bargain anymore. There will still be some meals purchased at some point. It helps if you can sell some rabbits. However, there are also opportunities to buy rabbits. At southern California shows, KW CAGES is on site and of course, one always needs something! Then, there are the raffles to help support the shows.

Attending national shows requires more planning and lots more financing (unless the show is literally in your hometown!). For most of us, if we can only attend one national show per year, it will probably be the ARBA. Many of us have more than one breed. Friends and family who may travel with us and share expenses often have other breeds. Therefore, it is more practical to go where we can take all our breeds and meet with many of our friends from distant areas who we may only see once per year at ARBA Conventions.

In is Jan/Feb/March president's report, Kevin mentions the possibility of planning an NDS with another club. Since the NDS can draw 500 or more rabbits, there isn't too much need to go in with one or more breeds. The multi-national shows or mini conventions, can be a real boon to breeds with smaller numbers.

Having attended 3 of these multi-national shows in the past, I can list some advantages. The first was mid 90's and was hosted by Denver's High Plains Rabbit Club. Hotel was expensive but sharing a room with 2 friends made it do-able. There were at least 6 breed nationals held in one big show room inside the headquarters hotel – never had to leave the building. Separate banquet rooms were provided for each breed as well as booth space for each club. Over a 2-day period, we had 2 specialty shows plus one all-breed show. The host club provided awards.

Next several years ago, we had a mini convention in Reno, Nevada. All shows were at the same facility. Each club made

their own arrangements and provided their awards. Banquets were arranged independently at separate locations. Each breed had 2 specialty shows.

In 1999, Country RBA of New Mexico hosted multi-nationals for at least 6 or 7 breeds in Albuquerque. Once again, the host club handled the facility set up, planned banquets in separate rooms in host hotel (an exception was Tans & Belgian Hares who shared since all but one Hare breeder also had Tans) and provided the awards. Each breed had 2 specialty shows on Saturday and all breed show on Sunday.

Again, this works well if you travel with someone raising another breed. However, there is no guarantee that all of your breeds will be at the same mini convention. There have been 2 occasions (including this year) when 2 of my breeds shared national show facilities but it was just too far to travel (East Coast). Wouldn't have been able to attend even if Dutch had also been there!

Deciding how far is too far to travel is dependent on many factors. Weather and finances are prime considerations. Then, there is the matters of accommodations if one must stay overnight. Competition is important. It's no fun to travel 7 hours to a show and find that you are the only exhibitor in 2 of your breeds. Judges are another factor. Showing under certain judges offers more incentive to go the extra mile. In some cases, in So. Calif., the same judges are at every show. It's definitely not worth the trip to have the same judge sort through the same rabbits several shows in a row. Last but not least, it is important to have enough quality animals to be competitive. You certainly don't want to spend a lot of time and money hauling around a bunch of inferior animals. Most of all, you must really enjoy the shows and seeing all your friends to make it worth all the extra effort and expense.

Respectfully submitted,



**Pat Mareska, BUNNY BRIGADE
Glendale, Arizona**

ROBERT HANLON: DOMESTIC RABBITS REPORTER

Hello,
My name is Robert Hanlon. I will be taking over as the reporter for the ARBA's Domestic Rabbit magazine. I live at 27 N. Pollard Dr., Fulton New York 13069, with my wife Georgina, and my two children Robert and Kellee. I started raising Dutch rabbits with my dad when I was a teenager many years ago. We raised mostly blacks and blues from stock we purchased from Mr. Bill Stedman and Mr. Tom Shufflebottom. I had a brief time period when I was without rabbits, (20 years with Uncle Sam in the U.S. Navy). After I retired from the Navy, I decided to take up the hobby again. I have a small rabbitry, about 25 holes. I raise blacks, blues, and chocolates. This year was my first time ever showing at a national show. It was great and it was a learning experience. Enough about me.

I will do the best I can as the new reporter for the Domestic Rabbit magazine but as you all know without your support there is no news to send out. I can only be as good as the information is that I receive. Please send me any information you can such as Open and Youth Best in Show wins, Best Four Class wins, and any show type information that you believe should get national attention. I want to bring your news to the ARBA level. I know that there are a lot of breeders out there doing some great things to promote the Dutch Rabbit and to support the youth of our organization. Let's get the attention our club deserves.

You can e-mail me at Bunnyman01@AOL.com. My first article will include news from the National Dutch show.

*Thank you,
Bob Hanlon*



A LITTLE HUMOR

Beautiful six-month-old male rabbit – black and white – playful, friendly, very affectionate. Ideal for family w/ kids.

OR

Handsome 32-year-old husband – personable, funny, good job, but does not like rabbits. Says he goes or the rabbit goes.

Call Jennifer at 555-5555 – come see both and decide which you'd like.

DUTCH REPORTER TOPICS

April/May/June 2000

“Breeding Tortoise Dutch”
Proper Conditioning - How Is It Done?

July/August/Sept 2000

Getting your Rabbitry ready for Winter.
Fall/Winter breeding.

We want to hear from you! Send us your thoughts and ideas!

Let Kevin Hooper or your director know of something that you would like to see covered in future DR's.



youth HAPPENINGS

.....our future stars

200 NDS YOUTH AWARDS

SHOWMANSHIP AWARDS

Junior:

- 1- Piper Smith
- 2- Sarah MacCombie
- 3- Julie Bergene
- 4- Ashley Jensen
- 5- Katie Bickelhaupt

Senior:

- 1- Jessica Gittleman
- 2- Catherine Coe
- 3- Brittany Riehl
- 4- Megan Kline
- 5- Diana Gilpin

ROYALTY AWARDS

DUKE

Alex Aisbet

LORD

Danny Lape

PRINCESS

- 1- Sarah MacCombie
- 2- Ashley Jensen
- 3- Julie Bergene
- 4- Adrienne Gerhart
- 5- Donietta McDowell

DUTCHESS

- 1- Cathy Coe
- 2- Megan Kline
- 3- Corrie Small
- 4- Erica Wittstadt
- 5- Jessie Aisbet

QUEEN

- 1- Jessican Gittleman
- 2- Diana Gilpin

OTHER CONTESTS

JR PHOTO

Grand Prize: Adrienne Gerhart
Donnietta McDowell
Katie Bickelhaupt
Adrienne Gerhart

SR PHOTO

Grand Prize: Greg Anell
Megan Kline
Kelly Slack
Diana Gilpin

JR WRITING

Grand Prize: Brian Weber
Finalist: Rachel Paul

SR WRITING

Grand Prize: Ashley Fridey

JR POSTER

Grand Prize: Danny Lape

JR CRAFT

Grand Prize: Cody Lape

SR CRAFT

Erica Wittstadt

SR ART

Megan Kline

Congratulations to all the contestants and winners. It's not too early to be thinking about the NDS in Illinois next year - and what contest you will be entering.

YOUTH REPORT

The National Dutch Show has come and gone. I hope that all the youth who made the trip to Pennsylvania had a good time. There was a nice line up of youth royalty, showmanship, and educational contests at the show, congratulations to everyone who participated. It is a lot of work to enter those contests and takes a lot of time, I commend all the youth who put in the effort!

The youth rabbits were very nice as well. If any of your rabbits made it to the top half of some of those classes, you were

doing good! I'd also like to thank our two youth judges for a job well done. They worked at a steady pace and got the job done, despite a few mishaps with getting rabbits to the table and such. All of the table help also kept things going. If you have never tried writing or running rabbits, try doing it at the next show. Help is always needed!

There are a few things that are happening in the youth department now. We are trying to continue to update our royalty and showmanship competitions and hope to increase the participation in them and the quality of awards offered to our winners. We're also trying to continue to get quality judges for the youth at future ARBA Conventions and National Dutch Shows. If any youth have suggestions or comments on any of these topics, or something else, feel free to contact me.

In other reports I'd like to put updates on youth numbers and activity at local Shows in the many parts of our country. If you show youth Dutch actively and could keep in touch with me over the months and just let me know how the numbers are, please contact me. I may be contacting some of the youth I already know of. Right now in my neck of the woods the interest in showing Dutch in Illinois is down. Numbers have not been steady and not as high as they used to be in years past. Traveling up to Wisconsin I see a lot of youth Dutch involvement, and at many of the shows 80-100 youth Dutch isn't uncommon. Michigan and Indiana youth numbers seem to remain steady and good. I hear we have some newer breeders in Michigan as well, that are getting hit by the Dutch bug.

I will rap it up because my first report is getting long. Thank you for your support and I look forward to working with you.

Fritz Trybus
532 S. Clinton
Oak Park, IL. 60304
(708) 524-0407
Trybunnies@aol.com

LOCAL DUTCH NEWS

NEWS FROM KANSAS

On 3-25-00 at a show in Capitol City in Lawrence there were 94 Dutch in open and 80 in youth. Looks like Dutch are coming up.

*Jack Colborn
Chanute, KS*



DUTCH IN THE SOUTHWEST

California and Arizona are home to several active local clubs. In Arizona, Dutch numbers are down from 50-60 per show in the fall to the 40's this spring. Show season was shorter this year, beginning in Nov. and ending in Feb. Dutch specialties were held in conjunction with all-breed shows in Nov., Dec. & Feb.

After celebrating 50 years of raising Dutch rabbits in April of '99, Roger Eich retired from showing rabbits. He and Bonnie sold off most of their herd and equipment. They kept only a few favorite rabbits. We wish them good health and good times ahead, and hope that they will still come by some shows to keep in touch. The next Arizona Dutch Specialty will probably be held in Tucson, Nov. 11 when the next show season opens.

California's Roadrunner Dutch Club held a special 10th anniversary show, Oct. 30. To thank all club supporters, Barb Sowers set entry fees at \$1 per rabbit, provided lunch for all exhibitors and gave out really nice awards for all BOB & BOSV as well as BOB & BOSB. 78 great Dutch crossed the tables that day. Barb merits special recognition for remaining such a faithful supporter of the Dutch rabbit and the ADRC, even though she and George now reside in an area where they are no longer allowed to breed rabbits. Barb continues to serve as secretary for shows

in her area. *A big 21-BUN SALUTE to Barb Sowers!*

Southern Calif. DRC is thriving and recruiting members from as far away as the United Kingdom. Phillip & Elizabeth Smethurst of England are among the newer members. **Those with Internet access may want to check out the UKRC web site at www.dutchrabbits.co.uk**

SCRDC publishes the excellent PAW PRINTS with informative articles; upcoming show listing and past show results. Anyone interest in joining the SCRDC to receive this fine newsletter may contact Joanne Purpus of Leucadia, CA.

Everyone in the Southwest is excited about the 2001 ARBA Convention to be held in Del Mar, CA. Although the SCRDC will not be in charge of the Dutch, our membership will be actively involved. Joanne is a member of the 2001 show committee. She is participating in some of the benefit shows currently being held all over the state of Calif.- To raise money for 2001. It is not too early to start planning to attend. The dates will be Oct. 14-18, 2001. Climate is always great - year round - in the San Diego area. Facilities are top of the line. Hotels/motels will fill up quickly. If possible, plan to spend a few extra days to take in a few of the many available attractions. Southern California has much to offer, something for everyone. Hope to see you there.

*Pat Mareska/Bunny Brigade
Glendale, Arizona*



LOUISIANA DUTCH RABBIT CLUB

Announcing the Louisiana Dutch Rabbit Club's new web site:

http://www.geocities.com/ldrc_la/

Check it out!!

1999 Breed Winners are Jimmie

Daniel in Open and Jeffrey Champagne in Youth.

The club is busy planning the October 14,2000 show in Carencro, LA. There will be a double Dutch show. Contact Judy Duthu for more info; 113 Jane St. Chauvin, LA 70344.

At a show on 3/11/00 Nancy Palmer took BOB with a black jr. doe and Jimmie Daniel won BOS with a Blue Sr Buck. Hunger Schexnaydre won BOB youth with a black jr. buck and Jeffrey Champagne won BOS with a black jr. doe.



**Caldwell &
Lybarger
Rabbits**

(573)594-2286



All 6 Colors

*9687 Andrain Rd. 673
Vandalia, MO 63382*

3/00

DID YOU KNOW?

If your membership is expired more than 60 days, you will loose ALL your sweepstakes points!!!!!!

Check your label and renew promptly.

CAGES, IDEAS and PRECAUTIONS by Kevin Hooper

I have been raising Dutch now for twenty-five years (since I was nine). You learn something every year that you need to change in either the cooping, the barn or whatever. Below are some ideas that will help you avoid some problems.

Cages - You have two options here, solid dividers between cages or wire. I like the wire dividers as they aren't as messy, and there is better airflow through the barn. Your dividers for each coop should be 2 panels of 1/2" x 1" wire placed 1" apart. This will prevent any does from biting the curious babies in the next cage. As most of us know, once a Dutch have been bit on the nose, it usually will heal with either a dark scar, or dark hairs where they should not be. This will prevent biting.

Spraying bucks -First, try to keep these bucks in pens that have solid dividers. Sometimes they will not spray if they don't have a rabbit beside that they can see. Also, keep them in the cage against the wall. If they continue to spray and make a mess out of themselves, and you would like to show them try this- put the in the pen in the corner that has one or no solid dividers. You will be sacrificing the cleanliness of the animal beside the buck, but the damage will be minimized.

Pens with trays (or belting material underneath) - use plastic poly trays. The droppings and urine have some smell, but that can be dumped. The yellowish staining can be hosed out of the plastic trays and this is what holds the smell. This is not as easy when metal trays begin to rust. The same is true for those of us using the Borak belting material. The manure that defies gravity and sticks to the belt doesn't stink. It's the stuff that builds up over time that holds the smell, even after you dump the tubs holding the manure. Take the belting out and hose it down every couple of months or have an extra set of belts that can be switched when one gets stained.

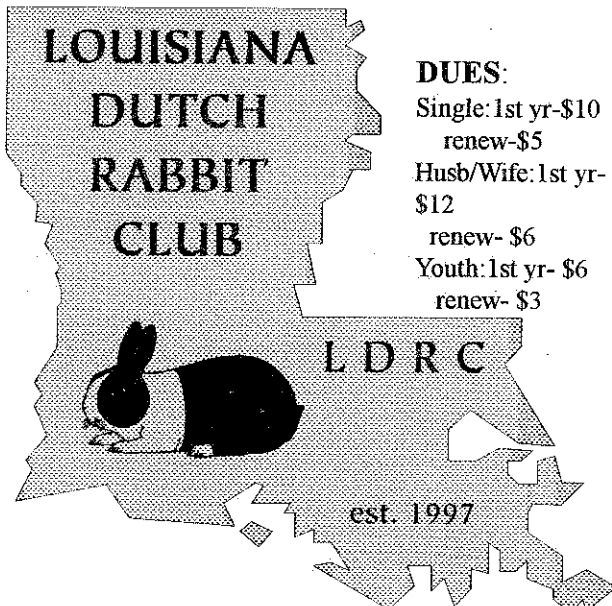
Ammonia - This can be reduced in barns or hutches or cages by keeping the area dry. When urine combines with moisture, it creates ammonia. If you have hanging cages, don't dump the water bowls under the cages. Don't get water in the trays, etc.

Rabbit won't eat - It doe not matter if you just bought a new rabbit, or one of yours is off of feed, the remedy is the same. If they don't eat the pellets, don't feed them. Take their pellets away for two days and feed them straw. Then give them a small amount of the pellets the third day. As long as they eat that then give the regular amount the fourth day.

Carriers - Don't carry them by grabbing the middle of the lid of the carrier. This will spring the lid (bend in the middle). Then it won't go down against the dividers and the rabbits can bite each other - (see scars and colored hairs above.)

I'm sure there will be more in a year or two.





**LOUISIANA
DUTCH
RABBIT
CLUB**

LDRC

est. 1997

DUES:
Single: 1st yr-\$10
renew-\$5
Husb/Wife: 1st yr-\$12
renew- \$6
Youth: 1st yr- \$6
renew- \$3


President: Jimmie Daniel
V-Pres: LuCristia Stanga
Sec/Treas: Judy Duthu
113 Jane St.
Chauvin, LA 70344
(504)594-9551

9/00



**THE SCHWARTZ FAMILY
RABBITS FOR FUN**

Dan, Dawn, Clarke & Paige Schwartz
14410 W 1063rd Street
Lockport, IL. 60441
(708)301-7752



DUTCH OPEN
*BOB & Best Fur 1994 ARBA Convention
Tulsa, OK*

*Best Black Fur 1996 NDS
Best Black Fur 1997 NDS*

DUTCH YOUTH
*Best Fur 1996, 1998 NDS
Best Fur 1996 ARBA Convention Peoria, IL.
Best Steel Fur 1997 NDS*

Specializing in Blacks & Blues

12/00

ADRC PUBLICITY ITEM ORDER FORM

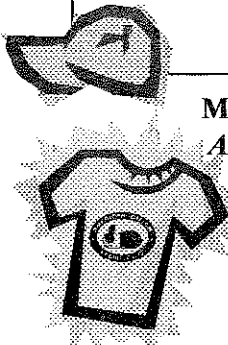


NAME _____ HOME PHONE # _____

STREET ADDRESS _____ CITY _____

STATE _____ ZIP _____ TODAY'S DATE _____

NAME OF ITEM	PRICE	HOW MANY	SIZE	COLOR
Pedigree Book	\$ 6.50			
Arm Patches (blue,black,choc)	\$4.50			
Scratch Pads	\$1.25			
Dutch Lapel Pin(Black, Blue,Choc,Tort)	\$2.50			
Dutch Glass Mugs	\$6.50			
Dutch Glass Cups(stackable)	\$4.50			
Caps with Dutch Logo Natural white/navy white/red	\$6.50			
Adult T-shirts *** (sm, med, large, XL) White Natural Ash Sage	\$12.50			
Polo Shirts small or medium Blue or Gray - state color	\$25.00			
Crew Neck Sweatshirts *** (med, large XL) red ash	\$22.00			
Jacket (natural) XL limited supply	\$35.00			
Aprons (natural)	\$13.00			
Porcelain Pins (only 6 left)	\$12.00			
Sweat Pants white (large)	\$22.00			



Mail this form with your check made out to

ADRC PUBLICITY & mail to :

Rick & Julie Billups

488 Pratt Road
Blanchester, OH 45107
Phone (937)655-8657
jbillups@in-touch.net

2

Sub Total	
15% handling charge	
Total	
# items ordered	

RESUMES

BRIONY BARNES

I would like to submit my name to the ADRC membership as a candidate for re-election to the position of District III Director. I am completing my first term after being appointed by President Hooper to fill a vacant term beginning in 1998.

For those of you who don't know me, I will include a little about myself and my rabbit raising background. I am 19 years old and live in El Dorado, Kansas where I attend Butler County Community College on a vocal music scholarship. I am a behavioral Science major and am also considering elementary education. For now I still live at home with my parents and rabbits. I also work part time at the Colleges Distance Learning Center. I am not sure where I will transfer after my graduation in 2001, but I can assure you that it will be within District III, and I will keep my rabbits. I have owned rabbits since 1986 and began raising Dutch in 1991. I started with Torts, which are still my favorite, but have added Blacks & Blues and recently a pair of English Spots. I maintain around 20 holes and usually show 2-6 rabbits per show. I have been fairly successful at the Youth level, winning numerous local BOB's and BOS's. My biggest win was BOB at the 1994 ARBA Convention with a homebred Tort. Along with serving as an ADRC Director I am currently Vice-President of the Kansas Dutch Rabbit Club and was President of our county-wide 4-H rabbit group for several years, as well as being a past ARBA Rabbit Queen. I have also recently achieved an eight-year goal in being granted an ARBA all-breed Judge's license. I believe my first

term on the ADRC Board was successful. I have attended every National show along with every Board and General Membership meeting. I have also attempted to keep in contact with the membership by submitting a Director's report to the Dutch Reporter for all but one issue during my term.

Two of my major contributions to the club have been the Royalty Guidelines and Youth Committees. The Royalty Guidelines committee was appointed to standardize the National Dutch Show Royalty Contest. After these rules were approved the committee was not longer necessary. There was a feeling that the Youth needed continued support so at the 2000 NDS I submitted a proposal for a Youth committee. The Board approved this and I was named chairperson. Along with Royalty some goals for this are to handle selection of the youth judges for the ARBA Convention and seeing to it that youth are given the same treatment as open. I know from experience how much a young breeder can learn from the rabbit project, and by a good youth program we are ensuring a solid foundation for our breed in years to come. One thing I believe is especially important in a good Director is someone who is friendly, approachable, and listens to the opinions and questions of all members. This is something I have always tried to do and hope those I represent consider me to have been successful.

It has been an honor to serve the ADRC as a Director for the past two and a half years. If elected for a second term, I promise to do everything I can to help promote the Dutch

rabbit and give District III members an active voice in the Board. I hope you all have been satisfied with my performance in the first term and will consider me qualified for a second!



FRAN SCETTTLER

My name is Fran Schettler, and I am running for the Vice Presidency of the ADRC. Most of you probably know me already or know of me already. For those who don't, however, I'll just briefly mention my credentials to run for this office.

I am a CPA in California and work as a Controller for a large telecommunications company. I have raised Dutch for 15 years and have spent many of those years on the ADRC Board as a District Board member. I have served and am serving on many ADRC committees, am currently chairman of the ARBA Judges Selection Committee and am a member of the Standards Committee and the Hall of Fame Committee. Last year, working with an Access programmer, I designed, programmed and tested the new ADRC sweepstakes computer program that allowed the ADRC to expand its sweepstakes offering and helped ease the tremendous amount of work that the sweepstakes takes. I could go on but I think that this gives you the general idea.

I would welcome the honor of becoming your Vice President, and would appreciate your vote.

Thank you.

WELCOME TO THE AMERICAN DUTCH RABBIT CLUB THE FOLLOWING NEW MEMBERS

Caitlin Stobel 207 Russell, **KS** 3/5/2001 Y *rec: Bob Bergene*
 Anjelica Pearson Junction City, **KS** 03/05/2001 Y *rec: Bob Bergene*
 Larry & Leslie Thomas Family Greenville, **IN** Family youth: Cara Thomas (MR) 11/19/2000
 Michael & Robin Duricek Bowling Green, **OH** 03/22/2001 F Family Youth: Carlene Duricek
 FY *rec: Kevin Hooper*
 Emily Heath Florence, **MS** 39073 03/17/2001 Y *rec: electronic form*
 Michael Gates Sandusky, **OH** 03/17/2001 S
 Rebbecca Hoover Burden, **KS** 03/06/2001 Y
 Ron & Dianne Russ Erie, **PA** 03/15/2001 F Family Youth: Rachel, Ruth, Renee Russ FY
 Brady Warner Keymar, **MD** 03/13/2001 Y *rec: electronic form*
 Wayne Killingsworth Maeystown, **IL** 03/10/2001 S *rec: electronic form*
 Becki Gadilaukas Aztec, **NM** 03/10/2001 F Family Youth: Karin, Elizabeth, Lucy Gadilaukas
 FY
rec: Kassie Brown
 C Thomas Cudworth House Taunton, **MA** 03/24/2001 S
 Shelly K Tewes Family Jackson, **MN** 3/29/2001 F Family Youth: Travis, Stephanie & Alex
 Tewes FY
rec: electronic form
 Brianna K Anderson Westby, **WI** 04/09/2001 Y *rec: D Bengtson*
 Ashley Grisez Frederick, **MD** 02/03/2001 Y
 Wally Comer Cincinnati, **OH** 3/31/2001 S
 Rachael A Paul Family New Bremen, **OH** 03/22/2001 Family family youth: Chris E, Carri A,
 Maddy C, Anna K & Molly K Paul
 Melissa Wolfe Lake Stevens, **WA** 3/31/2001 Y
 Cathy Wolfe same address 3/31/2001 S *both rec: Pete & Debra Nelsen*
 Donald & Judith Amon Sandy Lake, **PA** 4/6/2001 H *rec: John Imes*

NEVER BE AFRAID TO TRY SOMETHING NEW

Remember – Amateurs build the Ark. Professionals built the Titanic.	Even if you are on the right track, you will get run over if you just sit there.	An optimist thinks that this is the best possible world. A pessimist fears that this is true.
Conscience is what hurts when everything else feels good.	Politicians and diapers have one thing in common. They should both be changed regularly and for the same reason.	I don't mind going anywhere as long as it is an interesting path.
Talk is cheap because supply exceeds demand.		Indecision is the key to flexibility.



12/00

Kennedy Rabbitry

Quality Blacks, Chocolates, &
Brown Grays.

Also Breeders of
Florida White
Rex

Winners of numerous Best in Shows, BOB's
and BOS's

Call us for your needs.

RR 1 Box 26
Atlanta, KS 67008 316-394-2467
akennedy@mercurybigshoes.net

PO Box 2949
250 Grandview Drive
Wise, Virginia 24293

Carlos Boggs
Assistant and Youth
Show Person

Wise Rabbitry

"Mountain Grown Dutch"
All Inquiries Promptly Answered
Will Ship



Greg & Dawn Gilbert
(540) 328-5717 (Home)
(540) 328-3676 (Rabbitry)

Dutch
(Most Varieties)

9/00

OHIO STATE DUTCH RABBIT CLUB

Open & Youth Sweepstakes
Two State Specialty Shows per year
Spring: Payback Show
Fall: Trophy Show

OFFICERS:

President: Kevin Hooper
Vice Pres: Todd Uran
Sec/Treas: Vicki Bogan
Dir/Editor: Shelly Thompson
Dir: Bob Hessick
Dir: Dan Nixon



For more information contact:
Vicki Bogan, Sec/Treas.
1033 N SR 72
Sabina, OH 45169

12/00

Kansas Dutch Rabbit Club

2000 Officers

President - Marvin Cole Treasurer - Jack Colborn
Vice President - Briony Barnes Secretary - Bob Bergene

Dues - \$ 5 per person/\$8 per family

Shows - Specialty Shows in Spring and Fall
Dutch Only Summer Picnic Show
June 3, Gardner, KS



For more info please contact:
Bob Bergene, Secretary
30165W. 154th St
Gardner, KS 66030

3/02

THE OHIO STATE RABBIT BREEDERS
ASSOCIATION, INC.
SPONSORS THE ARBA 77TH ANNUAL
CONVENTION -- Oct. 29 - Nov. 2, 2000
"A Tail of Two Centuries"
COLUMBUS, OHIO

The following is the information thus far put together for the 2000 ARBA Convention in Columbus. I have 40 rooms blocked off at the Travel Log/Howard Johnson (this is the same hotel as the last ARBA convention in Columbus). Located at the Dublin/Grandview (161) exit off of I-71. The phone number is 614-885-4484. Please make sure to mention you are with the Dutch club. The price for a **double room is 49.95 per night**. The location of the breakfast to be held on Wednesday 11/3 is yet to be determined. If you are interested in donating money for specials please send those to me at 881 W 11th Avenue Columbus Oh 43212. If you have any questions please email me at TURAN@CheckFree.com or call me at 614-488-8656 (I am never home). That is all I have for know.

Thanks

Todd Uran

see page 40 for judge's list

ARBA Convention Catalogs can be ordered from:

Judy Kiracofe

9470 N. Dixie Hwy.

Bluffton, OH 45817 jakiraco@wcoil.com

Make checks out to OSRB, 2000 for \$9.75

2001 National Dutch Show -
Sponsored by the Illinois Dutch
Rabbit Club
Springfield, IL April 22-22

Illinois State Fairgrounds-Orr Building (2 miles from Interstate 55)

Show Secretary: Norma Hart

Show Superintendent: Richard Gehr

Assistant Show Superintendents: Dan Schwartz,
Bill Lorenz, & Ron VanDeWalle

All cooping will be double walled, which should prevent any injuries by one animal to another. The Orr Building is 40,000 square feet of room. The NDS will be held in conjunction with the American Checkered Giant Club National Show. They will be setup at one end of the building, and will not interfere with the NDS. Entry fee will be \$4 per animal. Fur will be \$3. Activities are planned for Friday evening for both youth and adults. The "no ear number" entry system will be used.

HEADQUARTERS: Signature Inn, which is located about 15-20 minutes from the Fairgrounds. The rate is **\$64.90, including tax (up to 4 people in a room)**. Currently 58 room are blocked off - 2 queen beds in each room and 2 rooms have 1 king bed. All rooms contain a microwave, refrigerator, coffee maker, ironing board and each morning there is a free continental breakfast in the lobby. The banquet will be held in the headquarters.

The Springfield airport is only a few minutes from the showroom and is serviced by American Eagle, United Express, and TWA's commuter service. If you are flying from a distance, you may wish to consider flying into St. Louis, MO and renting a vehicle to drive to Springfield. There will be food available at the showroom Friday, all day Saturday and during checkouts on Sunday.

2001 ARBA Convention

San Diego, CA

October 14-18

In a recent magazine poll of the ten best big cities in America, San Diego was named as number five. This is interesting because, moving down here almost twenty years ago from a really big city - Los Angeles which finished God knows where, I always felt San Diego was a nice, midsize city. Apparently not anymore.

The reasons for this pick was "San Diego has some of the best weather in the world. That makes getting out and about in the great outdoors a San Diego passion.

Balboa park, with the world renowned

San Diego zoo, is also one of the best public parks in the

world. The gaslamp area boasts 16 blocks of galleries, cafes and bars in restored 19th century buildings. (I might add that Kevin and Denese held their wedding reception in a wonderful, old restored hotel) of course all this wonderfulness is also a mecca for alternative medicine, holistic schools, past life regression therapy and a thousand yoga teachers"

San Diego's eccentricities are enhanced by a gorgeous ocean and blue, blue sky's. All this can be experienced at the Del Mar Hilton Hotel....the perfect headquarters for the Arba 2001 Convention.

Be there.

Joanne Purpus

ARBA 2001 Event Coordinator

ADRC BOARD MEETING YORK, PA.

The board meeting of the American Dutch Rabbit Club was called to order by President Kevin Hooper at 6:45 PM Friday April 28, 2000 in the National Dutch Show show room, York, Pennsylvania.

Board members answering roll call were: President Kevin Hooper, Secretary Doreen Bengtson, District I directors, Sue Peters and Martin Preede, District II director, Sharon Mixdorf, & District III directors, Steve Blyth, Pete Nelsen & Briony Barnes. Briony Barnes made a motion to dispense with the reading of the minutes of the last board meeting since they had been printed in the Dutch Reporter. Motion seconded by Sharon Mixdorf, carried.

Reports of officers:

Todd Uran had no report.

Pete Nelson reports having been to 10 shows this spring and that a Dutch had Best in Show both open and youth at one of those shows. He expects to see 60-80 Dutch at each show and many youth exhibitors.

Sharon Mixdorf reports that the virus scare has caused lower numbers at shows in Iowa. Also that there have been no other confirmed cases of the dreaded virus.

Martin Preede says that the bad weather in the east has caused lower numbers of exhibitors at shows.

Briony Barnes is seeing open exhibitors on the increase and youth on the decrease. Also that she and Bob Bergene are both new ARBA Judges. Briony an all breed judge, and Bob a Dutch Specialty.

Steve Blythe hasn't been showing lately, but says that he hears that the good ones are still showing up at the shows.

Kevin Hooper notes that youth numbers are outstanding with 60 Dutch in open and 120-130 in every youth show. Open numbers are down slightly.

Treasurers report was accepted as it appears in another part of this

Dutch Reporter.

Publicity committee reports they have new youth "T" shirts. They come in Pink and Blue and are smashing. The committee also is offering Sweatshirts and working on a Dutch Breed Poster. A discussion followed about purchasing some small portable DUTCH SHOW signs that could be sent to each show sponsor to help direction everyone to the show area. They have put the Best In Show money into a CD until it is needed. Then asked for direction as to what the raffle money from the ARBA Convention should be earmarked for. After discussion it was decided that the funds should be used to purchase additional booth space for the ADRC. This would help provide socializing space for members. **Guide Book** committee is getting letters out to members soliciting articles for the coming new Guide Book.

Youth Committee proposal by Briony Barnes was discussed. A motion made by Doreen Bengtson, seconded by Martin Preede was carried. President Hooper appointed Briony Barnes as chair of that project. Fritz Trybus, the ADRC Youth Rep then reported that youth activity is down in Illinois.

OLD BUSINESS:

Web Site: will cost about \$250 per year and it is ready to roll, but awaiting a volunteer site manager.

Bid for the 2001 National Dutch Show was presented and after reviewing the material, Todd Uran made a motion to accept the bid, seconded by Steve Blyth, motion passed. The dates for NDS 2001 April 20-22, 2001 in Springfield, IL. Bid material will appear in another part of this Dutch Reporter.

The Dutch Reporter editor is requesting another list of Dutch Reporter topics. We will ask for ideas at the general membership meeting on Saturday AM.

Seller's Class and ethics were the topic of the next discussion. The Board goes on record as asking sellers class chairmen to follow the guidelines very carefully. The objective being to keep the

quality of the entries as high as possible. Discussion of additional awards ended with no action.

NEW BUSINESS:

Discussion of Life Membership followed. The rules for Life Membership appear in the Constitution and By Laws. It was brought to the board's attention that some new members have felt ignored or not welcomed at national shows. It was decided to ask all members attending their first National show stand and be recognized so that we know who they are.

Secretary presented a request for a postal meter and scale. Board approved with a motion by Martin Preede and second by everyone.

Domestic Rabbit article contributor has retired and the ADRC needs a new volunteer to contribute. A call for a volunteer will be made at the general membership meeting on Saturday.

Hall of fame nominations as presented by the committee, Alan Miller & Mike Stinehelfer were approved with a motion by Martin Preede and second by Pete Nelson, carried.

Discussion of increase of support of ARBA Convention sponsorship resulted in a motion by Steve Blyth, second by Pete Nelson to increase the ADRC appropriation to \$250. for open and \$250 for youth. Passed.

Approval of the appointment of Sue Strandwitz to replace Rick Billups who has moved out of his district was approved by the board.

Motion to adjourn by Sue Peters, seconded by Briony Barnes was passed.

*Respectfully submitted,
Doreen Bengtson, Secretary*



ADRC GENERAL MEMBERSHIP MEETING: YORK, PA.

The American Dutch Rabbit Club general membership meeting was called to order by President Kevin Hooper at 8:30 AM in the showroom at York, Pennsylvania. All board members answered roll call except Vice President Roger Guetschow and District II directors Troy Ihrke and Sue Strandwitz. Motion by Dan Nixon to dispense with the reading of the minutes since they had been printed in the Dutch Reporter, seconded by Pete Nelson was passed. Motion by Reggie Shull, seconded by Jay Imes to approve the treasurer's report (printed elsewhere in this DR) was carried.

Officers of the ADRC were introduced. Call for Domestic Rabbit article contributor resulted in the appointment of Briony Barnes to that position.

Guidebook committee announced the call for articles for the soon to be new guidebook.

Publicity committee reported new items for sale and the enlargement of the booth space for the National Convention in Columbus.

OLD BUSINESS:
none

NEW BUSINESS:

Call for topics for future Dutch Reporters was given.

Call for resumes for election to offices in the ADRC was given.

Announcement of the acceptance by the Board of the appointment of Sue Strandwitz to the position left vacant by Rick Billups moving out of his district.

Announcement of the acceptance of the bid by the Illinois Dutch Club for the 2001 National Dutch Show in Springfield, IL on April 20-22, 2001.

Announcement of the board action to increase the allotment for awards to National ARBA conventions to \$250 each to open and youth.

Motion to adjourn by Fred Mullinax, seconded by Jay Imes was passed.

The meeting was adjourned.

*Respectfully submitted,
Doreen Bengtson, secretary*



BEST OF BREED YOUTH 2000 NATIONAL DUTCH SHOW

The trip to York, PA. was a long ways for us to travel. Dad did give it a second thought when we were only four hours from home. He wanted to turn around and go back home. We convinced him it would be worth going on and that it would be a great way to bond with his two little daughters! We were right about that.

Our Sr. Blue doe won Best of Breed in the youth show. It was very thrilling to win.

BEST OF BREED OPEN

RICK AND JULIE BILLUPS 2000 National Dutch Show

Winning Best of Breed at this year NDS was an absolute shock to both Julie and I. The unfortunate thing was that Julie was unable to attend this years' show due to her pregnancy and she missed out on the tense moments. This is our first National win since we started raising Dutch together in 1991. Prior to that, my brother and I had a couple National wins with one being BOS at the 1985 NDS in York, PA. with a blue senior doe. It appears that York is my lucky place. The trip to York was a little bumpy to say the least. Between the hour delay on the wonderful PA Turnpike and then our arrival at the show room, I thought what else could go wrong. Kevin and I checked into the motel with what was supposed to be a room with two double beds but ended up being a room with a queen bed and a sofa. The motel informed us that they were overbooked and couldn't switch out the room. Kevin was judging on Saturday so he took the bed and I got the sofa by default. Most of my time on Saturday was spent in the publicity booth and checking to make sure all of our animals made it to the table. I was surprised to win the junior black doe class and then shocked when I was informed that Julie and I had won the blue senior doe class. We are proud to say that the black junior doe is 60% Billups and 40% Hooper stock on her four generation pedigree with no out crossings.

As many of you know, Julie and I have been in a transitional stage over the past six months with us living in two different cities. Winning BOB or even placing in the top of a class was the furthest from our minds. We owe a lot of the credit to the feed that we use and its ability to keep our animals in condition while being moved twice in a three-month period. Additional credit or thanks goes to our good friend and BOS winner Kevin Hooper for helping us move our rabbits and housing/feeding part of the herd for several months. Julie and I would have had to reduce our herd like we did five years ago when we moved to Nashville and started all over again.

We would like to say thank you to the judges for all their hard work and thank you to the show committee.

It was great to see our many friends that we have met over the years. Good luck to all of you.

Thanks to Mom and Dad for making it possible for us to go to the NDS. We couldn't do it without your help.

We will see you in Columbus, Ohio. Good luck to all of you and thank you again.

*Kristina and Michelle Blythe
Burbank, South Dakota*



BEST OPPOSITE SEX OPEN
KEVIN HOOPER 2000 National Dutch Show

It was an interesting finish to the National Dutch Show this year. You could see the judges were comparing the Black doe and Blue doe belonging to Rick Billups, and my Gray Sr Doe. They were looking for the BOB, at least that's what we figured, and we were right. They spent a good bit of time on the BOB, and then they looked at the bucks. They didn't spend nearly as much time on the bucks as the does, at least it seemed that way.

Several of our Ohio breeders were making our predictions while Rick wasn't going to jinx himself and didn't say much of anything. Judging how the judges were looking at them, I made my call of the Black Jr Doe and the Steel Jr Buck. It was more of a feeling on my Steel Jr Buck than how they looked at him.

It was enjoyable to win the Best Opposite at this NDS. It was nice to see Ohio Dutch doing well again, and it was good to see Rick get a big win. I was disappointed in the little steel buck - when I discovered at 10 weeks he was no longer a doe. She matured into a nice little buck. He now resides in that state up north with Tom Dietrich.



**2000 NATIONAL DUTCH SHOW
BREED FUR WINNERS**

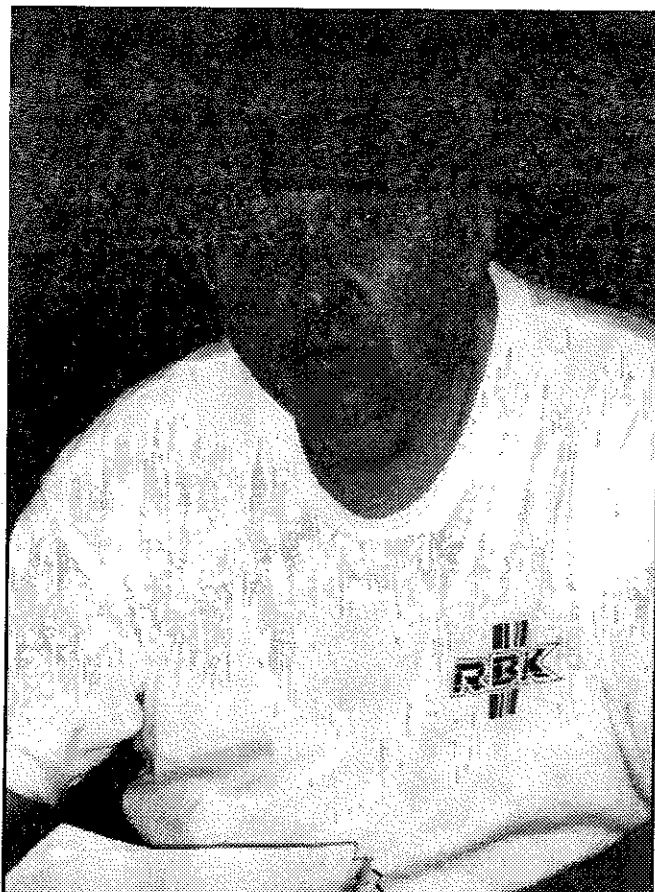
OPEN

- 1- Mullinax
- 2- Miller
- 3- Hooper
- 4- Aisbet
- 5- Hessick

YOUTH

- 1- Kline
- 2- Antonelli
- 3- Gilpin
- 4- Lape
- 5- Trybus

Scenes from YORK



Thanks for the Great Show

Lots of Fun

HESSICKS DUTCH HUTCH

GREAT TO MEET OLD AND NEW FRIENDS

**BERGENE RABBITRY
KANSAS**



Way to Go

Rick and Kevin!!

SMITH'S RABBITRY

Jim, Adam and Austin

Congrats to the winners.

The construction was horrible.

My rabbits didn't win and my son broke his elbow!

Carol Dangler

Congratulations to ALL winners! I enjoyed my 1st show!

Katie Bickelhaupt

386 Halifax Lane
Medina, OH 44256
330-723-8449

DUTCH - Black, Blue, Brown-Gray



Thanks for hosting the 2000 Dutch Show!
Loved coming home to Pennsylvania.

Don & Carol Johnson

Kirkland, WA
cajejo@aol.com



HOWDY'S DUTCH RABBITS

Howard Dunmire, Sr.
126 Wisebecker Lane
Monongahela, PA 15063
724-258-4191
dunmire@stargate.com



Great Job

Rick & Kevin

**See everyone in Columbus
this Fall**



Bob Hanlon
27 N. Pollard Dr.
Fulton, N.Y. 13069
315-598-6061

Congratulations to All.

BEST TORTOISE
BEST TORTOISE FUR

Aisbet Family

rabbitsrus@nconnect

<http://www.homeskad.com/dutchrabbits>

**Had Good Time
Home of the Blues**



RICKY WOOD

DUTCH -- ALL COLORS
Faber, VA 804-263-5255

CLARK CRAWFORD



RICHMOND, VA

804-222-0533

JACK TEIXEIRA

88 Summer St.
Taunton, MA 02780
Black, Choc & Tort
(508)822-4564

Congratulations to all winners. We had a great time.
Hope to see everyone at the ARBA Conv.

San W. Kirk

Diane Gilpin



GREAT SHOW!

**“Old Man Still
Plugging”**

L. Thompson

DONIETTA MC DOWELL

Thanks for a great show!

CHARLES WABECK

Salisbury, MD 21801

Blacks and Blues

We got lost a couple of times, got quite
mad, but it was still a great show!

Rachel Antonelli
Rachel's Treasured Bunnies

**I CAME
I SAW
I'LL BE BACK**

RON BURCH

Best of Everything

**“Tommy D”
Tom Dietrich**

ARBA JUDGE

Wayne MacKinnon

TONY MICALLET

Best of Everything

Congratulations to everyone!
The weather was great.
Had a good time!

Emily & Mike Smith
(and Matt)

CAN I SLEEP NOW?

MARK

Congratulations Rick & Kevin

BOB & BOS

Bob Hessick

Jill,

Thanks for your knowledge and expertise with the Harle's, but most of all, thanks for a great start!

Ann & Janet Wickerham

Lynn Shaw
was
there

To Billy Bounds,

Thank you for getting me off to a great start with my Tortoise and Brown Grays.

To John Imes,

Than you for my beautiful Blacks and Blues and also all the other varieties you sold me at the convention.

To Ron Burke,

Thank you for Charmer, he stole my heart.

To everyone else that has helped me, thank you. The Dutch breeders are so generous to the youth and that makes showing the breed so much easier and enjoyable. I love my Dutch and I love all the people I have met.

Love,

Ashley Grisez

**THANKS TO EVERYONE WHO
HELPED US OUT IN YORK**

I LOVE YOU ALL,

Marty Preede

GREAT SHOW,
GREAT TIME,
THANKS!

NEW YORK STATE DUTCH CLUB

Had a great time in
York.

Larry Dishaw



CONGRATULATIONS TO EVERYONE!
THANKS FOR A GREAT TIME.

CHRIS HAYHOW

*Thanks for a fun show and the great
support of the Harlequin Dutch
Display.*

Jill Dobson

Had a great time!!!

Stacey Bollinger

410-597-9858

BLACK BLUE TORT

I placed 7th with a Tort Buck - Youth

Thanks for a Busy, Fun Time -- Sorry Sharon
couldn't come to enjoy it.

V.A. Dahl

Had fun & congrats to all the winners!

BOSV Black & Best Jr. Blue

Cody and Danny Lape

Weber's Dutch Rabbitry

4787 Cotton Run Road

Hamilton, Ohio 45011

(513)726-5149

Alan, Brian, Scott, Valerie, Keith

Blacks *** Blues

BLYTHE'S DUTCH

BOB YOUTH

BOV Blue Youth

BOSV Choc Youth

Best Choc Display Youth

Best Gray Display Youth

Best Overall Display Youth

Best Steel Display Open

Best Steel Open

BEST SENIOR BLACK 2000 NATIONAL DUTCH SHOW

Larry and Doreen Bengtson Lewiston, Minnesota



It was a real delight to be asked to Judge again at a NDS.

Thanks!

Stan (Joyce) Freed



To Billy Bounds -

Thank you so much for giving my daughter such a good start with the Torts.

Ann Wickerham

BEST TORT, SR.
Eric and Sharon Mixdorf

Had Fun!

How do you get out of here without going on the Turn Pike?
319-234-6937

Was it worth a two day drive?

I think so.
Thanks EDRFC, it was fun!

Briony Barnes

Best of Breed
Open Winners:
Rick and Julie Billups

Had a good time and it feels good to finally win one.

Thanks to everyone who helped in the Publicity Booth.

The road construction was terrible, the trip was long.
We were afraid our turns would be all wrong.
The show secretary didn't show

Martin was STRESSED!
But we'd driven all night and we needed to rest.
We listened to judges and what they discussed,

With most we agreed,
over just a couple we fussed! :)
Uncle Dick didn't come
and everyone asked,

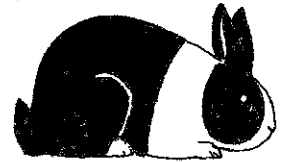
Since he stayed home,
We spend more cash, fast!
It was the girl's trip East,
We had a great time.
Congrats to Rick, Julie & Kevin
Your rabbits looked fine.

Tommy D was Rockin'
With the swinging rabbit he won,
Thank you Eastern Dutch
Club, It was a job
"Well done".

Kelli, Val & Kay

P.S.
He's Back!

Kevin Hooper BOS Open



Had The Time of My Life



MEADVILLE, PA

Congratulations to all the winners!

BEST YOUTH FUR

Megan Kline

Had a great time!

BEST OPEN FUR

Fred and Kathy Mullinax

I ENJOYED MY TIME IN YORK, PA

**FRITZ TRYBUS
OAK PARK, IL.**

GOOD SHOW

**Greg & Dawn Gilbert
Carlos Boggs**



Be sure to take out one of these special ads in Columbus this Fall. Let everyone know you made the trip!

For the next DR.

Articles and /or comments and pictures from the following are needed:

Youth NDS contest winners
Hall of Fame Winners
NDS Judges comments
BOS Youth winner

SELLER'S CLASS - 2000 NATIONAL DUTCH SHOW

<i>Open</i>						
<i>Place</i>	<i>Ear No</i>	<i>Variety</i>	<i>Sex/Class</i>	<i>Seller</i>	<i>Buyer</i>	<i>Price</i>
	1 R448	Black	Jr Doe	Bob Hessick	Denny Kline	\$150.00
	2 I7	Gray	Sr Doe	Jay Imes	Bob Hessick	\$50.00
	3 ES60	Black	Jr Buck	Evenberg & Stearns	Jay Imes	\$110.00
	4 HDC59	Blue	Jr Buck	Howard Dunmire	Loretta Schmidgall	\$45.00
	5 D1	Blue	Jr Doe	Rick Lehmann	Valerie Dahl	\$60.00
	6 RCOB5	Black	Sr Buck	Ray Perchinski	Valerie Dahl	\$40.00
	7 P3172	Blue	Sr Doe	Martin Preede	Pete Nelsen	\$70.00
	8 990H	Black	Jr Doe	E & S Mixdorf	Keith Weber	\$40.00
	9 JAB2	Black	Jr Buck			
	JD03	Black	Jr Doe	D & C Johnston	Doreen Bengtson	\$65.00
	JSA6	Black	Jr Doe			
	10 JSA4	Black	Jr Buck			
	JGE1	Blue	Sr Doe	D & C Johnston	Doreen Bengtson	\$65.00
	JD01	Blue	Jr Doe			
No Place	006H	Chocolate	Jr Doe	E & S Mixdorf	Todd Uran	\$30.00
No Place	KB62	Blue	Jr Doe	Kevin Hooper	Larry Dishaw	\$75.00
No Place	R420	Black	Sr Doe	Bob Hessick	Howard Dunmire	\$75.00
No Place	JJ10	Black	Sr Buck	Jim Smith	Mark Pecaric	\$25.00
No Place	OJ	Tortoise	Sr Buck	Jim Smith	Loretta Schmidgall	\$15.00
No Place	HDC29	Blue	Jr Doe	Howard Dunmire	C & D Lape	\$50.00
No Place	ORCB4	Black	Jr Doe	Ray Perchinski	Loretta Schmidgall	\$35.00
No Place	12W	Blue	Jr Buck	Keith Weber	Valerie Dahl	\$35.00
No Place	KT26	Tortoise	Jr Buck	Kevin Hooper	Todd Uran	\$60.00
No Place	J9LE	Tortoise	Jr Doe	Jill Dobson	Larry Dishaw	\$85.00
No Place	33W	Blue	Jr Doe	Keith Weber	Jim Smith	\$20.00
No Place	TT62	Black	Jr Buck	Robert Hanlon	Loretta Schmidgall	\$15.00
No Place	I929	Blue	Sr Doe	Gary Clark	Clark Crawford	\$30.00
No Place	PC	Blue	Jr Buck	Gary Clark	Dan Nixon	\$25.00
No Place	H927	Blue	Sr Doe	Bob Tackett	Tony Micallef	\$45.00
No Place	TT77	Choc	JD	Robert Hanlon	Loretta Schmidgall	\$30.00
No Place	HDA87	Blue	Sr Doe	Linda Waldruff	George Long	\$30.00
No Place	L6	Blue	Jr Buck	Linda Waldruff	Ron Burch	\$15.00
						\$1,390.00

<i>Youth</i>						
<i>Place</i>	<i>Ear No</i>	<i>Variety</i>	<i>Sex/Class</i>	<i>Seller</i>	<i>Buyer</i>	<i>Price</i>
	1 KN1	Gray	Sr Buck	Katie Bickelhaupt	Larry Dishaw	\$35.00
No Place	M35	Black	Sr Buck	Megan Kline	Sharon Mixdorf	\$35.00
	A12	Gray	Sr Buck	Catherine Coe	Valerie Dahl	\$15.00
	ROY	Black	Sr Buck	Rachel Russ	Clark Crawford	\$15.00
	TED	Chocolate	Sr Buck	Rachel Russ	Joaquim Tiexiera	\$25.00
	K211	Chocolate	Sr Buck	K & M Blythe	Tony Micallef	\$25.00
	K230	Chocolate	Jr Doe	K & M Blythe	Steve Esterly	\$15.00
	AT20	Blue	Jr Buck	Austin Smith	Steve Esterly	\$15.00
	RO2	Blue	Sr Buck	Rachel Antonelli	Tony Micallef	\$20.00
	CD69	Black	Sr Buck	C & D Lape	Katie Bickelhaupt	\$50.00
	R4	Blue	Sr Doe	Rachel Antonelli	Larry Dishaw	\$65.00
	LO1	Black	Jr Buck	Corrie Small	NO SALE	
						\$315.00

OPEN SHOW REPORT - 2000 NATIONAL DUTCH SHOW

BOB 593 IN BREED	02RJ	JR DOE	BLACK	RICK & JULIE BILLUPS
BOS 293 BREED OPPOSITES	KS60	JR BUCK	STEEL	KEVIN HOOPER
BEST SENIOR ALL COLORS	JR62	SR DOE	BLUE	RICK & JULIE BILLUPS
BEST JUNIOR ALL COLORS	02RJ	JR DOE	BLACK	RICK & JULIE BILLUPS
BEST DISPLAY OVERALL				KEVIN HOOPER
BEST FUR OVERALL	KG45		BROWN GRAY	F&K MULLINAX

BLACK

BOV 183 IN VARIETY	02RJ	JR DOE		RICK & JULIE BILLUPS
BOSV 88 VARIETY OPPOSITES	RA1	SR BUCK		LARRY, DOREEN, ERIK, MANDY BENGTON
BEST SENIOR	RA1	SR BUCK		LARRY, DOREEN, ERIK, MANDY BENGTON
BEST JUNIOR	02RJ	JR DOE		RICK & JULIE BILLUPS
BEST DISPLAY				DON & CAROL JOHNSTON
BEST FUR	R340			BOB HESSICK

BLUE

BOV 131 IN VARIETY	JR62	SR DOE		RICK & JULIE BILLUPS
BOSV 57 VARIETY OPPOSITES	HDC39	JR BUCK		HOWARD DUNMIRE SR
BEST SENIOR	JR62	SR DOE		RICK & JULIE BILLUPS
BEST JUNIOR	HDC39	JR BUCK		HOWARD DUNMIRE SR
BEST DISPLAY				PETE & DEBRA NELSEN
BEST FUR	KB42			KEVIN HOOPER

CHOCOLATE

BOV 78 IN VARIETY	9TF1	SR DOE		PETE & DEBRA NELSEN
BOSV 41 VARIETY OPPOSITES	FC2	JR BUCK		F & K MULLINAX
BEST SENIOR	9TF1	SR DOE		PETE & DEBRA NELSEN
BEST JUNIOR	FC2	JR BUCK		F & K MULLINAX
BEST DISPLAY				F & K MULLINAX
BEST FUR	KC76			KEVIN HOOPER

BROWN GRAY

BOV 71 IN VARIETY	KG18	SR DOE		KEVIN HOOPER
BOSV 35 VARIETY OPPOSITES	MG37	JR BUCK		ALAN MILLER
BEST SENIOR	KG18	SR DOE		KEVIN HOOPER
BEST JUNIOR	MG37	JR BUCK		ALAN MILLER
BEST DISPLAY				KEVIN HOOPER
BEST FUR	FG45			F & K MULLINAX

STEEL

BOV 49 IN VARIETY	K215	SR DOE		STEVE & JUDY BLYTHE
BOSV 26 OPPOSITES	KS60	JR BUCK		KEVIN HOOPER
BEST SENIOR	K215	SR DOE		STEVE & JUDY BLYTHE
BEST JUNIOR	KS60	JR BUCK		KEVIN HOOPER
BEST DISPLAY				KEVIN HOOPER
BEST FUR	M155			ALAN MILLER

TORTOISE

BOV 81 IN VARIETY	7	JR DOE		ANGIE AISBET
BOSV 46 VARIETY OPPOSITES	F7T	JR BUCK		F & K MULLINAX
BEST SENIOR	815H	SR BUCK		ERIC & SHARON MIXDORF
BEST JUNIOR	7	JR DOE		ANGIE AISBET
BEST DISPLAY				F & K MULLINAX
BEST FUR	J2			ANGIE AISBET

BLACK

SR BUCK 44	SR DOE 35	JR BUCK 44	JR DOE 60
1 BENGTON	FITCH	SHAW	BILLUPS
2 JOHNSTON	ESTERLY	BERGENE	BELL
3 SCHWARTZ	URAN	MIXDORF	BOB HESSICK
4 SCHWARTZ	EVENBURG & STEARNS	DIETRICH	ASBET
5 BOUNDS	IMES	LARRY NIXON	JOHNSTON

BLUE

SR BUCK 30	SR DOE 43	JR BUCK 27	JR DOE 31
1 BELL	BILLUPS	DUNMIRE	HOOPER
2 FITCH	MULLINAX	DUNMIRE	NELSEN
3 NELSEN	SHAW	CLARK	NELSEN
4 WEBER	TOM & AMBER HESSICK	WEBER	WEBER
5 URAN	BOB HESSICK	NELSEN	MULLINAX

CHOCOLATE

SR BUCK 18	SR DOE 22	JR BUCK 23	JR DOE 15
1 TEIXEIRA	NELSEN	MULLINAX	URAN
2 HOOPER	GILBERT	URAN	MULLINAX
3 BOB HESSICK	MICALEFF	WISE	HOOPER
4 MIXDORF	NESBITT	HANLON	MULLINAX
5 ESTERLY	WOOD	HANLON	WOOD

BROWN GRAY

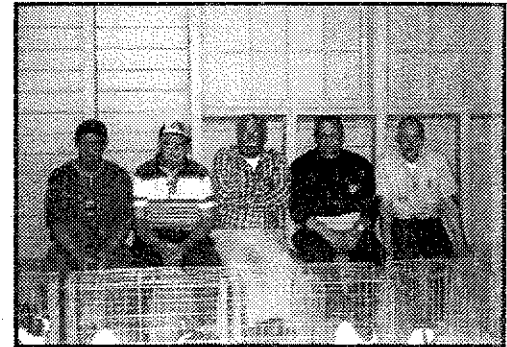
SR BUCK 16	SR DOE 20	JR BUCK 19	JR DOE 16
1 LARRY NIXON	HOOPER	MILLER	ESTERLY
2 NELSEN	ESTERLY	HOOPER	BERGENE
3 HOOPER	NELSEN	BOUNDS	GILBERT
4 HOOPER	IMES	SHULL	MULLINAX
5 BOUNDS	HOOPER	BOUNDS	NELSEN

STEEL

SR BUCK 14	SR DOE 12	JR BUCK 12	JR DOE 11
1 GERHART	BLYTHE	HOOPER	HOOPER
2 BOB HESSICK	HOOPER	LARRY NIXON	MILLER
3 BLYTHE	BOUNDS	BLYTHE	MULLINAX
4 HOOPER	HOOPER	HOOPER	LARRY NIXON
5 BLYTHE	NESBITT	BOB HESSICK	URAN

TORTOISE

SR BUCK 28	SR DOE 19	JR BUCK 18	JR DOE 16
1 MIXDORF	WOOD	MULLINAX	ASBET
2 TEIXEIRA	MULLINAX	URAN	NESBITT
3 GUETSCHOW	WOOD	DANGLER	MULLINAX
4 TEIXEIRA	DANGLER	SHULL	BERGENE
5 ASBET	HOOPER	BERGENE	DANGLER



YOUTH SHOW REPORT - 2000 NATIONAL DUTCH SHOW

BOB 297 IN BREED	K209	SR DOE	BLUE	KRISTINA & MICHELLE BLYTHE
BOS 151 BREED OPPOSITES	EM32	JR BUCK	TORT	EMILY SMITH
BEST SENIOR ALL COLORS	K209	SR DOE	BLUE	KRISTINA & MICHELLE BLYTHE
BEST JUNIOR ALL COLORS				
BEST DISPLAY OVERALL				KRISTINA & MICHELLE BLYTHE
BEST FUR OVERALL	M58			MEGAN KLINE

BLACK

BOV 80 IN VARIETY	KP4	JR DOE		KATIE BICKELHAUPT
BOSV 43 VARIETY OPPOSITES	9CD	JR BUCK		CODY & DANNY LAPE
BEST SENIOR	RPX	SR BUCK		RACHAEL ANTONELLI
BEST JUNIOR	KP4	JR DOE		KATIE BICKELHAUPT
BEST DISPLAY				CODY & DANNY LAPE
BEST FUR	M58			MEGAN KLINE

BLUE

BOV 57 IN VARIETY	K209	SR DOE		KRISTINA & MICHELLE BLYTHE
BOSV 31 VARIETY OPPOSITES	Z	SR BUCK		KELLY HOWARD
BEST SENIOR	K209	SR DOE		KRISTINA & MICHELLE BLYTHE
BEST JUNIOR	7CD	JR BUCK		CODY & DANNY LAPE
BEST DISPLAY				FRITZ TRYBUS
BEST FUR	H2			DIANA GILPIN

CHOCOLATE

BOV 42 IN VARIETY	MEG	SR DOE		RENEE RUSS
BOSV 23 VARIETY OPPOSITES	K210	SR BUCK		KRISTINA & MICHELLE BLYTHE
BEST SENIOR	MEG	SR DOE		RENEE RUSS
BEST JUNIOR	91Z	JR BUCK		ZACHARY & NATHAN GRAYBEAL
BEST DISPLAY				KRISTINA & MICHELLE BLYTHE
BEST FUR	9G0			ASHLEY GIRSEZ

BROWN GRAY

BOV 43 IN VARIETY	EM43	JR DOE		EMILY SMITH
BOSV 23 VARIETY OPPOSITES	KG23	SR BUCK		KATIE BICKELHAUPT
BEST SENIOR	KG23	SR BUCK		KATIE BICKELHAUPT
BEST JUNIOR	EM43	JR DOE		EMILY SMITH
BEST DISPLAY				KRISTINA & MICHELLE BLYTHE
BEST FUR	F150			FRITZ TRYBUS

STEEL

BOV 24 IN VARIETY	EM405	JR DOE		EMILY SMITH
BOSV 12 OPPOSITES	LT	SR BUCK		KELLI SLACK
BEST SENIOR	LT	SR BUCK		KELLI SLACK
BEST JUNIOR	EM405	JR DOE		EMILY SMITH
BEST DISPLAY				FRITZ TRYBUS
BEST FUR	CDS7			CODY & DANNY LAPE

TORTOISE

BOV 51 IN VARIETY	MEN	JR DOE		KELLI SLACK
BOSV 19 VARIETY OPPOSITES	EM32	JR BUCK		EMILY SMITH
BEST SENIOR	9BC2	SR DOE		KRISTINA & MICHELLE BLYTHE
BEST JUNIOR	MEN	JR DOE		KELLY SLACK
BEST DISPLAY				EMILY SMITH
BEST FUR	3C			ASHLEY JENSEN

BLACK

SR BUCK 24	SR DOE 26	JR BUCK 19	JR DOE 11
1 ANTONELLI	GRISEZ	LAPE	BICKELHAUPT
2 LAPE	LAPE	LAPE	BLYTHE
3 BICKELHAUPT	JENSEN	EMILY SMITH	LAPE
4 KLINE	SLACK	BOGGS	JENSEN
5 LAPE	ANTONELLI	WEBER	LAPE

BLUE

SR BUCK 19	SR DOE 12	JR BUCK 12	JR DOE 14
1 HOWARD	BLYTHE	LAPE	TRYBUS
2 AUSTIN SMITH	EMILY SMITH	AISBET	SLACK
3 ANTONELLI	ANTONELLI	BOGGS	KLINE
4 TRYBUS	KLINE	GERHART	TRYBUS
5 BERGENE	ANTONELLI	GERHART	LAPE

CHOCOLATE

SR BUCK 14	SR DOE 11	JR BUCK 9	JR DOE 8
1 BLYTHE	RUSS	GRAYBEAL	AISBET
2 PAUL	KLINE	LAPE	BLYTHE
3 BLYTHE	PAUL	GRAYBEAL	KLINE
4 TRYBUS	GRAYBEAL	BLYTHE	HOWARD
5 BLYTHE	AISBET	SMALL	BLYTHE

BROWN GRAY

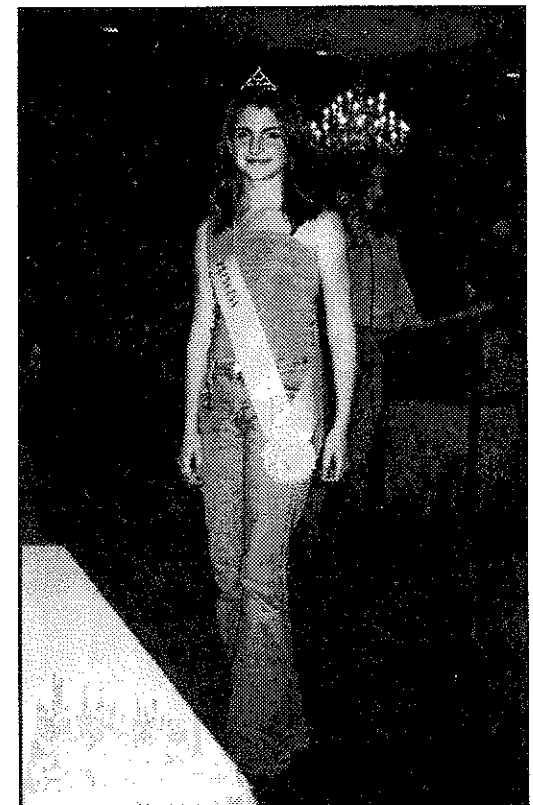
SR BUCK 11	SR DOE 12	JR BUCK 12	JR DOE 8
1 BICKELHAUPT	BLYTHE	TRYBUS	EMILY SMITH
2 WITTSTADT	COE	BLYTHE	SLACK
3 BICKELHAUPT	EMILY SMITH	GRISEZ	BLYTHE
4 MCDOWELL	TRYBUS	EMILY SMITH	GRAYBEAL
5 EMILY SMITH	SLACK	HOWARD	SLACK

STEEL

SR BUCK 7	SR DOE 8	JR BUCK 5	JR DOE 4
1 SLACK	GILPIN	GRAYBEAL	EMILY SMITH
2 PAUL	PAUL	WOLFE	GRISEZ
3 COE	TRYBUS	LAPE	JENSEN
4 TRYBUS	COE	PAUL	GRAYBEAL
5 EMILY SMITH	TRYBUS	WEBER	

TORTOISE

SR BUCK 12	SR DOE 17	JR BUCK 7	JR DOE 15
1 WOLFE	JENSEN	EMILY SMITH	SLACK
2 EMILY SMITH	STELZER	ANTONELLI	ANTONELLI
3 BARRON	KLINE	AISBET	EMILY SMITH
4 LAPE	MACCOMBIE	WHITEHOUSE	KLINE
5 EMILY SMITH	PAUL	ASHLEY JENSEN	SHAEFFER



OPEN SWEEPSTAKES STANDINGS 5/5/00

Place	Name	State	Shows	Points
1	Pete/Debra Nelson	WA	9	5332
2	Jim/Fran Schettler	CA	15	4401
3	Greg Gilbert	VA	10	3601
4	Ricky Wood	VA	9	2452
5	Jill Giron-Lee	CA	14	2329
6	Fred/Kathy Mullinax	NC	6	2318
7	John Imes	PA	4	1888
8	Chris/Denise Lowey	CA	12	1774
9	Kevin Hooper	OH	5	1689
10	Dan Nesbitt	IN	6	1567
11	Wenton Carlton	AZ	7	1481
12	Gene Styles	FL	11	1438
13	Beau Williamson	CA	13	1352
14	Robert Hessick	OH	4	1290
15	Joaquim Teixeira	MA	4	1172
16	Jess McCune	IA	4	1157
17	Jimmie Daniel	LA	8	1078
18	Joanne Purpus	CA	5	1062
19	Larry Dishaw	NY	5	1052
20	Todd Uran	OH	2	1014

YOUTH SWEEPSTAKES STANDINGS – 5/3/00

Place	Name	State	Shows	Points
1	Megan Kline	OH	4	3099
2	Cody/Danny Lape	OH	4	2379
3	Emily Smith	MI	5	1486
4	Rachel Antonelli	MI	6	1338
5	Chris Moerbe	TX	4	1201
6	Rachel/Daniel Saunier	OH	6	1125
7	Amber Hessick	PA	4	868
7	Zacgart/Nathan Graybeal	IN	4	868
9	Greg Moll	MI	5	779
10	Renee Russ	PA	3	763
11	Ashley Grisez	MD	4	728
12	Tiffany Wayne	MN	2	607
13	Adrienne Gerhart	OH	6	509
14	Fritz Trybus	IL	2	500
15	Tamber Weiersheuser	IA	2	498
16	Diana Gilpin	TN	4	491
17	Rachael Paul	OH	2	487
17	Ashely Jensen	VA	4	487
19	Jessica Aisbet	WI	3	482
20	Kelli Slack	IN	3	454

RABBIT OF THE YEAR STANDINGS 5/5/00

Owner /Rabbit Ear #	State	Shows	Points
1 Beau Williamson/RSSTAR	CA	11	1066
2 Kevin Hooper/KS23	OH	3	520
3 Emily Smith/EM94	MI	3	468
4 Megan Kline/M2	OH	2	401
5 Lori Simpson/ASD	CA	4	378
6 Jill Giron-Lee/J49	CA	3	376
7 Cody/Danny Lape/CD43	OH	1	316
8 Catherine Coe/FISH	MD	2	314
9 RachelAntonelli/RPX	MI	1	306
10 Renee Russ/MEG	PA	4	297
11 Jack&Charlott Colborn/6T1	KS	2	246
12 Jim&Fran Schettler/WW133	CA	3	243
13 Kelli Slack/KR	IN	2	238
14 Rick Lehmann/SP6	KS	3	230
15 Megan Kline/M24	OH	2	226
16 Michael Smith/EM401	MI	1	222
17 Rachel&Daniel Saunier/910T	OH	2	220
18 Carol Dangler/D31	OH	2	207
19 Pete/Debra Nelsen/9VC1	WA	2	204
20 Todd Uran/44	OH	1	202
20 John Imes/BA4	PA	1	202

BEST & BEST OPPOSITE OF BREED STANDINGS 5/5/00

Place	Name	State	Wins	Points
1	Pete/Debra Nelson	WA	14	1081
2	Beau Williamson	CA	13	959
3	Jim/Fran Schettler	CA	16	825
4	Greg Gilbert	VA	10	750
5	Jill Giron-Lee	CA	10	710
6	Megan Kline	OH	4	627
7	Kevin Hooper	OH	5	611
8	Lori Simpson	CA	5	538
9	Emily Smith	MI	4	526
10	Fred/Kathy Mullinax	NC	5	463
11	John Imes	PA	5	420
12	Gene Styles	FL	7	417
13	Zachary/Nathan Graybeal	PA	6	404
14	Renee Russ	PA	6	400
15	Dan/Dawn Schwartz	IL	4	396
16	Jimmie Daniel	LA	11	387
17	Wenton Carlton	AZ	7	386
18	Joaquim Teixeira	MA	6	381
19	Ricky Wood	VA	5	356
20	Michael Smith	MI	2	333

TONY
MICALLEF

Quality Dutch Rabbits

18250 Bethel Church Rd
Manchester, MI 48158
Black, Blue, Chocolate, Tort



3/01

734-428-7524



Clover Lane Dutch

"Black, Blue, Brown-Gray" since 1946

John C. (Jay) Imes ARBA Registrar ABA Judge

19402
Green Mtn. St.
Meadville, PA 16335 (814)337-5395

12/00



**OPEN VARIETY SWEEPSTAKES
STANDINGS 5/5/00**

	Place	Name	State	Shows	Points
BLACK	1	Jim/Fran Schettler	CA	15	1237
	2	Pete/Debra Nelson	WA	9	1233
	3	Jill Giron-Lee	CA	14	1015
	4	Beau Williamson	CA	13	887
	5	Gene Styles	FL	11	799
	6	Chris/Denise Lowey	CA	12	679
	7	Robert Hessick	OH	4	662
	8	Greg Gilbert	VA	10	633
	9	Pat Mareska	AZ	12	608
	10	Todd Uran	OH	2	490

BLUE	1	Pete/Debra Nelson	WA	9	1445
	2	Jill Giron-Lee	CA	14	950
	3	Ricky Wood	VA	9	866
	4	Howard Dunmire	PA	5	717
	5	Fred/Kathy Mullinax	NC	6	697
	6	Gary Clark	MO	7	685
	7	Jim/Fran Schettler	CA	15	542
	8	Greg Gilbert	VA	10	496
	9	Keith Weber	OH	3	468
	10	John Imes	PA	4	452

CHOC	1	Greg Gilbert	VA	10	1062
	2	Jim/Fran Schettler	CA	15	1042
	3	Pete/Debra Nelson	WA	9	650
	4	Ricky Wood	VA	9	433
	5	Chris/Denise Lowey	CA	12	409
	6	Dan Nesbitt	IN	6	297
	7	Shelly Thompson	OH	5	294
	8	Joaquim Teixeira	MA	4	244
	9	Jimmie Daniel	LA	8	241
	10	Brenda Wright	LA	3	200

	Place	Name	State	Shows	Points
TORT	1	Ricky Wood	VA	9	537
	2	Joaquim Teixeira	MA	4	471
	3	Fred/Kathy Mullinax	NC	6	453
	4	Carol Dangler	OH	4	429
	5	Jim/Fran Schettler	CA	15	417
	6	Jill Dobson	OR	4	412
	7	Carol Dangler	OH	5	378
	8	Joaquim Teixeira	MA	6	343
	9	Billy Bounds	CA	3	291
	10	Eric/Sharon Mixdorf	IA	5	283

STEEL	1	Kevin Hooper	OH	5	236
	2	Jim/Fran Schettler	CA	13	189
	3	Dan Nesbitt	IN	6	153
	4	Larry Dishaw	NY	5	135
	5	Jess McCune	IA	4	128
	6	Wenton Carlton	AZ	7	119
	7	R/L Snodgrass/Thompson	IL	3	111
	8	Ricky Wood	VA	9	110
	9	Robert Hessick	OH	3	102
	10	Fred/Kathy Mullinax	NC	6	100

GRAY	1	Pete/Debra Nelson	WA	9	1424
	2	Greg Gilbert	VA	10	1035
	3	John Imes	PA	4	756
	4	Jim/Fran Schettler	CA	15	568
	5	Joanne Purpus	CA	5	532
	5	Jess McCune	IA	4	532
	7	Cara Thomas	IN	6	473
	8	Kevin Hooper	OH	5	414
	8	Gene Styles	FL	11	414
	10	Fred/Kathy Mullinax	NC	6	363

Quality Dutch in all Colors

Kevin **H**ooper
ARBA Judge



President ADRC
Satisfaction Guaranteed!!
Will Ship

Breeding Dutch Since 1975

7661 State Route 350
New Vienna, OH 45159
(937) 987-2244
khoop1@juno.com

Best Display '91,'92, '95, '96, '97,'98,'99 NDS
Best Display '94, '96, '97 ARBA Conv.
Best Fur '90, '92, '96 ARBA Conv.
Best Fur '92 NDS
Best Black '98 NDS
Best Blue '97 ARBA Conv.
Best Chocolate '93,'99 NDS
Best Gray '93,'94, '96, '97,'99 NDS, '96 '97,'99 ARBA Conv.
Best Tort '95 NDS, '92, '95, '96 ARBA Conv.
Best Black '90, '96 ARBA Conv.
Best Steel '96 ARBA Conv.
Best Opposite Sex, '96 ARBA Conv.
Best Opposite Sex, '97 ARBA Conv.
Best of Breed, '98 NDS

12/00

YOUTH VARIETY SWEEPSTAKES STANDINGS 5/5/00

<u>BLACK</u>	Place	Name	State	Shows	Points
	1	Cody/Danny Lape	OH	4	1278
	2	Megan Kline	OH	4	1066
	3	Chris Moerbe	TX	4	857
	4	Rachel/Daniel Saunier	OH	7	773
	5	Greg Moll	MI	4	476
	6	Rachel Antonelli	MI	6	453
	7	Renee Russ	PA	3	414
	8	Emily Smith	MI	5	361
	9	Tamber Weiersheuser	IA	3	285
	10	Brian Weber	OH	4	253

<u>BLUE</u>	Place	Name	State	Shows	Points
	1	Megan Kline	OH	4	700
	2	Rachel Antonelli	MI	6	483
	3	Cody/Danny Lape	OH	4	390
	4	Adrienne Gerhart	OH	6	331
	5	Emily Smith	MI	5	279
	6	Chris Moerbe	TX	4	215
	7	Ashley Grisez	MD	4	211
	8	Renee Russ	PA	3	169
	9	Renee Provost	MA	5	162
	10	Clara Burgi	WI	2	142

<u>CHOC</u>	Place	Name	State	Shows	Points
	1	Megan Kline	OH	4	432
	2	Zachary/Nathan Graybeal	PA	4	420
	3	Alex Aisbet	WI	3	211
	4	Drew Berger	IN	4	199
	5	Rachael Paul	OH	2	132
	6	Cody/Danny Lape	OH	4	125
	7	Ashley Grisez	MD	4	114
	8	Rachel/Daniel Saunier	OH	5	93
	9	Renee Russ	PA	3	91
	10	Fritz Trybus	IL	2	60

<u>TORT</u>	Place	Name	State	Shows	Points
	1	Megan Kline	OH	4	537
	2	Jessica Aisbet	WI	3	454
	3	Rachel/Daniel Saunier	OH	7	375
	4	Emily Smith	MI	5	348
	5	Cody/Danny Lape	OH	4	316
	6	Janet Wickerham	MD	4	207
	7	Ashley Jensen	VA	4	170
	8	Drew Berger	IN	4	147
	9	Greg Moll	MI	5	144
	10	Kelli Slack	IN	3	126

<u>STEEL</u>	Place	Name	State	Shows	Points
	1	Cody/Danny Lape	OH	4	112
	2	Fritz Trybus	IL	2	107
	3	Tiffany Wayne	MN	2	104
	4	Jennifer Wayne	CA	2	88
	5	Zachary/Nathan Graybeal	PA	4	83
	6	Drew Berger	IN	4	80
	7	Kristen Battson	OH	3	65
	8	Diana Gilpin	TN	4	58
	9	Rachael Paul	OH	2	54
	10	Brian Weber	OH	2	51

<u>BROWN</u>	Place	Name	State	Shows	Points
	1	Drew Berger	IN	4	338
	2	Katie Bickelhaupt	OH	4	308
	3	Natalie Powell	KS	6	255
	4	Emily Smith	MI	5	188
	5	Zachary/Nathan Graybeal	PA	4	169
	6	Rachel Antonelli	MI	5	127
	7	Ashley Grisez	MD	3	97
	8	Tamber Weiersheuser	IA	3	90
	9	Catherine Coe	MD	3	85
	10	Fritz Trybus	IL	2	75

CORRECTED SHOW REPORTS

DATE: 9-11-99
SHOW: Washington RC
WHERE: Brenham, TX
JUDGE: M Etter
DUTCH: 20
BOB: Blk SB Moerbe
BOS: Blk SD Moerbe
BLACK: 15 SB Moerbe
BLUE: 2 SD Moerbe
TORT: 3 SB Merbe

DATE: 9-25-99
SHOW: Central TX RC
WHERE: Giddings, TX
JUDGE: B Lawrence
DUTCH: 24
BOB: Blk SB Moerbe
BOS: Blk SD NM
BLACK: 12 SB Moerbe
BLUE: 8 SD Andrews
TORT: 4 SB Moerbe

DATE: 11-13-99
SHOW: Brazos Area RBA

WHERE: Needville, TX
JUDGE: C Reeder
DUTCH: 19
BOB: Blue SB NM
BOS: Blk JD Moerbe
BLACK: 11 JD Moerbe
BLUE: 5 SB NM
CHOC: 1 SB NM
TORT: 2 SD NM

DATE: 11-13-99
SHOW: Brazos Area RBA
WHERE: Needville, TX
JUDGE: M Crawford
DUTCH: 19
BOB: Blk SD Moerbe
BOS: Blue SB NM
BLACK: 12 SD Moerbe
BLUE: 4 SB NM
CHOC: 1 SB NM
TORT: 2 SD NM

DATE: 12-4-99
SHOW: Texas RBA
WHERE: Killeen, TX

JUDGE: F Farrow
DUTCH: 12
BOB: Blk SD Moerbe
BOS: Blk SB Moerbe
BLACK: 8 SD Moerbe
BLUE: 4 SD Moerbe

DATE: 12-11-99
SHOW: Mid Tex RBA
WHERE: Killeen, TX
JUDGE: C Hooks
DUTCH: 13
BOB: Blk SD Moerbe
BOS: Blk SB Sparks
BLACK: 9 SD Moerbe
BLUE: 4 SD Sparks

DATE: 12-11-99
SHOW: Johnson Co RBA
WHERE: Killeen, TX
JUDGE: CM Carroll
DUTCH: 13
BOB: Blue SD Sparks
BOS: Blue SB Sparks
BLACK: 9 SD Moerbe
BLUE: 4 SD Sparks

Summary Show Reports - Open

DATE: 1/22/00
 SHOW: Little River YRBA
 WHERE: Santa Maria, CA
 JUDGE: Armando Cabrera
 DUTCH: 5
 BOB: Blue SD Brown, Zachary
 BOS:
 Black: 1 SD Brown, Zachary
 Blue: 1 SD Brown, Zachary
 Brown/Gray 2 SD Non-Member
 Tort: 1 SD Non-Member

DATE: 1/22/00
 SHOW: Little River YRBA
 WHERE: Santa Maria, CA
 JUDGE: Jamie Green
 DUTCH: 5
 BOB: Blue SD Brown, Zachary
 BOS: BOB: Black JB Simpson, Lori
 Blue: 1 SD Brown, Zachary BOS: Black JD Simpson, Lori
 Brown/Gray 2 SD Brown, Zachary Black: 30 JB Simpson, Lori
 Chocolate: 1 SD Brown, Zachary Blue: 12 SD Weeks, Kristen Black: 6 SB Non-Member Black: 15 JD Giron-Lee, Jill
 Tort: 1 SD Non-Member Brown/Gray 24 JD Purpus, Joanne Blue: 2 JD Palmer, Nancy Blue: 18 SB Giron-Lee, Jill
 Chocolate: 2 SB Carlton, Wenton Brown/Gray 1 JB Palmer, Nancy Brown/Gray 6 SB Mead, Rose
 Steel: 6 JD Weeks, Kristen Chocolate: 1 SB Non-Member Chocolate: 10 JB Schettler, Jim &

DATE: 1/29/00
 SHOW: So California Dutch RC
 WHERE: Imperial, CA
 JUDGE: Gail Ramsey
 DUTCH: 77
 BOB: Black JD Simpson, Lori
 BOS: Black JB Non-Member
 Black: 30 JD Simpson, Lori
 Blue: 12 JD Purpus, Joanne
 Brown/Gray 21 JD Carlton, Wenton
 Chocolate: 4 SB Non-Member
 Steel: 6 SB Carlton, Wenton
 Tort: 4 SB Non-Member

DATE: 1/29/00
 SHOW: Eastern Idaho RB
 WHERE: Blackfoot, ID
 JUDGE: Doug Covert
 DUTCH: 41
 BOB: Blue JB Non-Member
 BOS: Blue JD Non-Member
 Black: 13 SD Welch, Terry
 Blue: 9 JB Non-Member
 Brown/Gray 12 SD Non-Member
 Chocolate: 4 SD Welch, Terry
 Steel: 1 JB Non-Member
 Tort: 2 SB Non-Member

DATE: 1/29/00
 SHOW: Eastern Idaho RB
 WHERE: Blackfoot, ID
 JUDGE: Alan Ormond
 DUTCH: 32
 BOB: Black SB Welch, Terry
 BOS: Blue JD Non-Member
 Black: 11 SB Welch, Terry
 Blue: 8 JD Non-Member
 Brown/Gray 8 SB Non-Member
 Chocolate: 4 SD Welch, Terry
 Tort: 1 SD Non-Member

DATE: 1/29/00
 SHOW: Imperial Yuma R&C Adv Co
 WHERE: Imperial, CA
 JUDGE: Jennifer Milburn
 DUTCH: 80
 JUDGE: Chuck Alexander
 DUTCH: 13
 BOB: Steel JB Palmer, Nancy
 BOS: Blue JD Palmer, Nancy
 Black: 6 SB Non-Member
 Blue: 2 JD Palmer, Nancy
 Brown/Gray 1 JB Palmer, Nancy
 Tort: 7 JD Bullis, Terri

DATE: 2/5/00
 SHOW: Pacific W R&CSC-Show A
 WHERE: Vallejo, CA
 JUDGE: Doug King
 DUTCH: 62
 BOB: Black JD Giron-Lee, Jill
 BOS: Blue SB Giron-Lee, Jill
 Black: 18 JD Giron-Lee, Jill
 Blue: 13 SB Giron-Lee, Jill
 Brown/Gray 6 SD Schettler, Jim &

DATE: 2/5/00
 SHOW: Pacific W R&CSC-Show B
 WHERE: Vallejo, CA
 JUDGE: Lawrence Weeks
 DUTCH: 57
 BOB: Blue JB Giron-Lee, Jill
 BOS: Black JD Schettler, Jim & Fran
 Black: 16 JD Schettler, Jim & Fran
 Blue: 12 JB Giron-Lee, Jill
 Brown/Gray 6 SB Non-Member
 Chocolate: 12 JD Non-Member
 Steel: 4 SD Lowey, Chris & Denise
 Tort: 7 JD Bullis, Terri

DATE: 2/5/00
 SHOW: Pennsylvania State RBA
 WHERE: Lebanon, PA
 JUDGE: Bonnie Burdick
 DUTCH: 42
 BOB: Black SB Sartori, Sharon
 BOS: Blue SD Dunmire, Howard
 Black: 15 SB Sartori, Sharon
 Blue: 15 SD Dunmire, Howard
 Brown/Gray 2 JD Dahl, Valerie
 Chocolate: 2 SB Ancharski, Denise
 Steel: 1 SD Dahl, Valerie
 Tort: 7 SB Bollinger, Stacey

DATE: 2/5/00
 SHOW: S.P.A.R.K.-Show C
 WHERE: Pensacola, FL
 JUDGE: Judy Parris
 DUTCH: 58
 BOB: Steel JB Palmer, Nancy
 BOS: Black JB Balliet, Nickolas
 Black: 15 JD Giron-Lee, Jill
 Blue: 18 SB Giron-Lee, Jill
 6 SB Mead, Rose
 Chocolate: 10 JB Schettler, Jim & Fran

DATE: 2/6/00
 SHOW: Tri County RBA
 WHERE: Princeton, IL
 JUDGE: Richard Gehr
 DUTCH: 41
 BOB: Black SD Schwartz, Dan & Dawn
 BOS: Tort SB Mixdorf, Eric & Sharon
 Black: 13 SD Schwartz, Dan & Dawn
 Blue: 3 SB McAtee, Dennis
 Brown/Gray 8 JB McAtee, Dennis
 Chocolate: 3 SD Mixdorf, Eric & Sharon
 Steel: 6 SB Aisbet, Angela
 Tort: 8 JD Aisbet, Angela

DATE: 2/5/00
 SHOW: S.P.A.R.K.-Show A
 WHERE: Pensacola, FL
 JUDGE: Tom Green
 DUTCH: 10
 BOB: Brown/Gray JB Palmer, Nancy
 BOS: Black SD Non-Member
 Blue: 2 JD Palmer, Nancy
 Brown/Gray 1 JB Palmer, Nancy
 Chocolate: 1 SB Non-Member
 Steel: 3 JB Palmer, Nancy

DATE: 2/6/00
 SHOW: Pennsylvania State RBA
 WHERE: Lebanon, PA
 JUDGE: Sam Rizzo
 DUTCH: 32
 BOB: Black SB Bollinger, Stacey
 BOS: Black SD Bollinger, Stacey
 Black: 10 SB Bollinger, Stacey
 Blue: 13 SB Dunmire, Howard
 Brown/Gray 2 JD Dahl, Valerie
 Chocolate: 1 SD Sartori, Sharon
 Steel: 1 SD Dahl, Valerie
 Tort: 5 SB Bollinger, Stacey

DATE: 2/6/00
 SHOW: Double Dutch Club
 WHERE: Vallejo, CA
 BOB: Black JD Giron-Lee, Jill
 BOS: Black JB Balliet, Nickolas
 Black: 15 JD Giron-Lee, Jill
 Blue: 18 SB Giron-Lee, Jill
 6 SB Mead, Rose
 Chocolate: 10 JB Schettler, Jim & Fran

DATE: 2/6/00
 SHOW: Tri County RBA
 WHERE: Princeton, IL
 JUDGE: Richard Gehr
 DUTCH: 41
 BOB: Black SD Schwartz, Dan & Dawn
 BOS: Tort SB Mixdorf, Eric & Sharon
 Black: 13 SD Schwartz, Dan & Dawn
 Blue: 3 SB McAtee, Dennis
 Brown/Gray 8 JB McAtee, Dennis
 Chocolate: 3 SD Mixdorf, Eric & Sharon
 Steel: 6 SB Aisbet, Angela
 Tort: 8 JD Aisbet, Angela

DATE: 2/11/00
 SHOW: Florida State Fair
 WHERE: Tampa, FL
 JUDGE: Glen Carr
 DUTCH: 24
 BOB: Black SD Manning, Ed
 BOS: Black SD Manning, Ed
 BOS: Brown/Gray JB Manning,
 Black: 18 SD Manning, Ed
 Brown/Gray 2 JB Manning, Ed
 Steel: 2 SB Non-Member
 Tort: 2 SB Non-Member



Denny's Dutch
 Dennis K. McAtee, Sr.
 9933 32nd Street
 Oxford Jct., Iowa 52323
 Ph. 319-484-2377

Denny and Karlene 3/01

hawkeye dutch rabbitry 6/00

sharon & Eric Mixdorf
 1357 Huntington Rd.
 Waterloo, IA 50701
 (319)234-6937
Quality Dutch & Tans



DATE: 2/12/00
 SHOW: Kern Co RBA
 WHERE: Bakersfield, CA
 JUDGE: Jennifer Milburn
 DUTCH: 43
 BOB: Black JD Giron-Lee, Jill
 BOS: Blue JB Giron-Lee, Jill
 Black : 22 JD Giron-Lee, Jill
 Blue : 12 JB Giron-Lee, Jill
 Brown/Gray 5 SB Non-Member
 Chocolate : 3 JB Non-Member
 Tort : 1 JB Diaz, Brenda

DATE: 2/12/00
 SHOW: Georgia RC-Show 1

WHERE: Carrollton, GA
 JUDGE: Al Butler
 DUTCH: 2
 BOB:
 BOS:
 Black : 2

DATE: 2/12/00
 SHOW: Georgia RC-Show 2
 WHERE: Carrollton, GA
 JUDGE: Barbara Butler
 DUTCH: 13

BOB: Black SB Non-Member
 BOS: Blue SD Non-Member

Black : 7 SB Non-Member
 Blue : 1 SD Non-Member
 Brown/Gray 2 SD Non-Member
 Chocolate : 2 SB Non-Member
 Tort : 1 SD Non-Member

DATE: 2/12/00
 SHOW: Kern Co RBA
 WHERE: Bakersfield, CA
 JUDGE: Fred Cremer
 DUTCH: 42
 BOB: Black SD Williamson, Beau
 BOS: Chocolate JB Non-Member
 Black : 21 SD Williamson, Beau
 Blue : 12 SD Giron-Lee, Jill
 Brown/Gray 5 SB Pavay, Linda
 Chocolate : 3 JB Non-Member
 Tort : 1 JB Diaz, Brenda

DATE: 2/12/00
 SHOW: Arizona State R&CBA
 WHERE: Casa Grande, AZ
 JUDGE: David Cardinal
 DUTCH: 56
 BOB: Black JD Simpson, Lori
 BOS: Blue SB Carlton, Wenton
 Black : 26 JD Simpson, Lori
 Blue : 11 SB Carlton, Wenton
 Brown/Gray 5 JB Non-Member
 Chocolate : 5 SB Garcia, Marie
 Steel : 5 JB Non-Member

Tort : 4 SD Carlton, Wenton

DATE: 2/12/00

SHOW: Wateree Valley RF
 WHERE: Saluda, SC
 JUDGE: Kitty Lynch
 DUTCH: 59
 BOB: Black JB Gilbert, Greg
 BOS: Black JD Gilbert, Greg
 Black : 14 JB Gilbert, Greg
 Blue : 11 JD Brewer, Ray & Margie

Brown/Gray 12 JB Gilbert, Greg
 Chocolate : 8 SD Gilbert, Greg
 Kathy
 Steel : 3 JB Mullinax, Fred &

Tort : 11 SB Mullinax, Fred & Kathy

DATE: 2/12/00
 SHOW: Arizona State R&CBA
 WHERE: Casa Grande, AZ
 JUDGE: Bill Patrick
 DUTCH: 43

BOB: Blue SB Carlton, Wenton
 BOS: Tort JD Carlton, Wenton
 Black : 18 SD Mareska, Pat
 Blue : 12 SB Carlton, Wenton
 Brown/Gray 3 JD Carlton, Wenton
 Chocolate : 1
 Steel : 5 SD Mutal, Sharon
 Tort : 4 JD Carlton, Wenton

DATE: 2/12/00
 SHOW: Stonebelt RBA
 WHERE: Bloomington, IL
 JUDGE: Charisse Ormsby
 DUTCH: 21
 BOB: Black SD Nesbitt, Dan
 BOS: Steel SB Nesbitt, Dan
 Black : 3 SD Nesbitt, Dan
 Blue : 6 JD Nesbitt, Dan
 Chocolate : 5 SD Nesbitt, Dan
 Steel : 2 SB Nesbitt, Dan
 Tort : 5 JD Nesbitt, Dan

DATE: 2/12/00
 SHOW: Wateree Valley RF
 WHERE: Saluda, SC
 JUDGE: Brad Kingsbury
 DUTCH: 66
 BOB: Blue SB Gilbert, Greg
 BOS: Brown/Gray SD Styles, Gene
 Black : 17 JD Styles, Gene
 Blue : 12 SB Gilbert, Greg
 Brown/Gray 14 SD Styles, Gene
 Chocolate : 9 SD Gilbert, Greg

Steel : 3 JD Mullinax, Fred & Kathy

Tort : 11 SD Mullinax, Fred & Kathy

DATE: 2/13/00
 SHOW: Lakeland RBA
 WHERE: Elkhorn, WI
 JUDGE: Gary Grimm
 DUTCH: 26
 BOB: Black SB Gates, Darrell & Karen

Tort JD Aisbet, Angela
 Black : 9 SB Gates, Darrell & Karen
 Blue : 3 SB Gates, Darrell &
 Blue : 3 SB Gates, Darrell & Karen

Brown/Gray 3 SB Lorenz, Christine

Chocolate : 2 SD Gates, Darrell & Karen
 Steel : 5 JD Aisbet, Angela
 Tort : 4 JD Aisbet, Angela

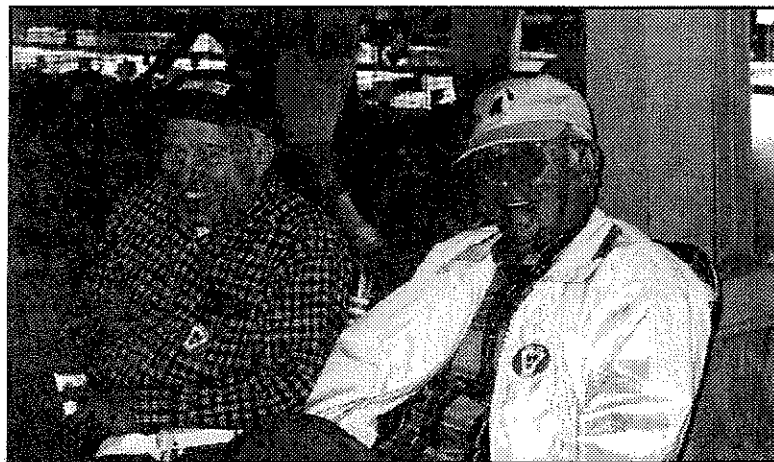
DATE: 2/13/00
 SHOW: Springfield R&CB
 WHERE: Springfield, OH
 JUDGE: Bruce Ormsby
 DUTCH: 38
 BOB: Black SB Shaw, Paula
 BOS: Blue SD Hooper, Kevin
 Black : 5 SB Shaw, Paula
 Blue : 9 SD Hooper, Kevin
 Brown/Gray 7 SB Hooper, Kevin
 Chocolate : 9 JD Thompson, Shelly
 Steel : 3 SB Hooper, Kevin
 Tort : 5 JD Hooper, Kevin

DATE: 2/13/00
 SHOW: Olympic R&CF
 WHERE: Shelton, WA
 JUDGE: Tom Keyes
 DUTCH: 43
 BOB: Brown/Gray JD Nelsen, Pete & Debra
 BOS: Brown/Gray JB Nelsen, Pete & Debra
 Black : 10 SB Johnston, Don & Carol
 Blue : 14 SD Nelsen, Pete & Debra
 Brown/Gray 10 JD Nelsen, Pete & Debra
 Brown/Gray 10 JD Nelsen, Pete & Debra
 Chocolate : 4 SD Nelsen, Pete & Debra
 Chocolate : 4 SD Nelsen, Pete & Debra
 Tort : 5 SB Nelsen, Pete & Debra

DATE: 2/19/00
 DATE: 2/19/00
 SHOW: Central MI RBA
 JUDGE: WHERE: Saline, MI Kim Howell
 JUDGE: Kim Howell
 DUTCH: 42
 BOB: Black SD Dangler, Carol
 BOS: Chocolate SB Bell, Carlene
 Black : 13 SD Dangler, Carol
 Black : 13 SD Dangler, Carol
 Blue : 7 JD Doll, Kevin
 Brown/Gray 2 JB Doll, Kevin
 Chocolate : 6 SB Bell, Carlene
 Chocolate : 6 SB Bell, Carlene
 Steel : 3 SB Dangler, Carol
 Tort : 11 JD Dangler, Carol

DATE: 2/19/00
 SHOW: Houston Livestock Show
 WHERE: Houston, TX
 JUDGE: John Soper
 DUTCH: 18
 BOB: Chocolate JD Barfield, Rhonda
 Chocolate SB
 BOS: Chocolate SB
 Black : 4 SD Non-Member
 Blue : 2 SD Barfield, Rhonda
 Brown/Gray 5 SD Barfield, Rhonda
 Chocolate : 4 JD Barfield, Rhonda
 Steel : 3 SD Barfield, Rhonda

DATE: 2/19/00
 SHOW: RP of Alabama-Show B
 WHERE: Florence, AL
 JUDGE: Al Butler
 DUTCH: 15
 BOB: Black SB Dill, Vern & Marti
 BOS: Black SD Lance, Gage
 Black : 7 SB Dill, Vern & Marti
 Blue : 3 SB Dill, Vern & Marti
 Brown/Gray 1 SB Non-Member
 Chocolate : 2 SB Non-Member
 Steel : 2 SD Non-Member



DATE: 2/19/00
 SHOW: Brookings RC
 WHERE: Watertown, SD
 JUDGE: Karen Heintz
 DUTCH: 14
 BOB: Chocolate JD Non-Member
 BOS: Tort JB Non-Member
 Blue: 4 JD Non-Member
 Brown/Gray 2 SB Non-Member
 Chocolate: 2 JD Non-Member
 Tort: 6 JB Non-Member

DATE: 2/19/00
 SHOW: Northwest Dutch RC
 WHERE: Victoria, BC, Canada
 JUDGE: Cindy Wickizer
 DUTCH: 68
 BOB: Blue SD Non-Member
 BOS: Brown/Gray SB Nelsen, Pete & Debra
 Black: 16 JB Currie, Judy
 Blue: 19 SD Non-Member
 Brown/Gray 16 JD Nelsen, Pete & Debra
 Chocolate: 11 SB Nelsen, Pete & Debra
 Steel: 1 SB Non-Member
 Tort: 5 SB Nelsen, Pete & Debra

DATE: 2/19/00
 SHOW: Yancouver Island RBA
 WHERE: Victoria, BC, Canada
 JUDGE: Cliff Dick
 DUTCH: 59
 BOB: Brown/Gray JD Nelsen,

Pete & Debra
 BOS: Brown/Gray JB Nelsen, Pete & Debra
 Black: 15 SB Nelsen, Pete & Debra
 Blue: 16 SD Nelsen, Pete & Debra
 Brown/Gray 16 JD Nelsen, Pete & Debra
 Chocolate: 10 SD Nelsen, Pete & Debra
 Steel: 1 SB Non-Member
 Tort: 1 SB Nelsen, Pete & Debra

DATE: 2/19/00
 SHOW: Falls Cities R&CBA
 WHERE: Shelbyville, KY
 JUDGE: Terry Fender
 DUTCH: 45
 BOB: Brown/Gray SD Non-Member
 BOS: Tort SB Driskell, Keith
 Black: 20 JD Driskell, Keith
 Blue: 2 JD Driskell, Keith
 Brown/Gray 16 SD Non-Member
 Chocolate: 1 SD Mathis, Denny

Steel: 2 JB Non-Member
 Tort: 4 JD Non-Member
 DATE: 2/19/00
 SHOW: RP of Alabama-Show A
 WHERE: Florence, AL
 JUDGE: Barbara Butler
 DUTCH: 13
 BOB: Blue SB Dill, Vern & Marti
 BOS: Steel SD Non-Member
 Black: 5 SB Non-Member
 Blue: 3 SB Dill, Vern & Marti
 Brown/Gray 1 SB Non-Member
 Chocolate: 2 SB Non-Member
 Steel: 2 SD Non-Member

DATE: 2/20/00
 SHOW: Cumberland Co RBA
 WHERE: Lyman, ME
 JUDGE:
 DUTCH: 0
 BOB:
 BOS:

DATE: 2/20/00
 SHOW: Yancouver Island RBA
 WHERE: Victoria, BC, Canada
 JUDGE: Randy Shumaker
 DUTCH: 68
 BOB: Blue SD Nelsen, Pete & Debra
 BOS: Brown/Gray JB Nelsen, Pete & Debra
 Black: 16 JD Nelsen, Pete & Debra
 Blue: 19 SD Nelsen, Pete & Debra
 Brown/Gray 16 JB Nelsen, Pete & Debra
 Chocolate: 11 SD Nelsen, Pete & Debra
 Steel: 1 SB Non-Member
 Tort: 5 SD Non-Member

DATE: 2/20/00
 SHOW: Peoria Area RBA
 WHERE: Peoria, IL
 JUDGE: Glen Carr
 DUTCH: 90
 BOB: Black JD Schwartz, Dan & Dawn
 BOS: Black SB Schwartz, Dan & Dawn
 Black: 32 JD Schwartz, Dan & Dawn
 Blue: 24 SD Schwartz, Dan & Dawn
 Brown/Gray 8 JD Rawailot, Jorri & Cindy
 Chocolate: 4 SD Mixdorf, Eric & Sharon
 Steel: 5 JD Snodgrass/Thompson, R, & L/T
 Tort: 17 SD Gehr, Richard

DATE: 2/26/00
 SHOW: Bunny Boosters RC
 WHERE: Shenandoah, IA
 JUDGE: Wendy Feaga
 DUTCH: 48
 BOB: Black JB Non-Member
 BOS: Steel SD McCune, Jess
 Black: 15 JB Non-Member
 Blue: 10 JD Non-Member
 Brown/Gray 10 JD McCune, Jess
 Chocolate: 5 JB McCune, Jess
 Steel: 5 SB McCune, Jess
 Tort: 3 SB McCune, Jess

DATE: 2/26/00
 SHOW: Florida Dutch Club
 WHERE: Bahn, FL
 JUDGE: Fibber McGehee
 DUTCH: 72
 BOB: Black SB Non-Member
 BOS: Black SD Non-Member


Black: 22 SB Non-Member
 Blue: 15 SB Wood, Ricky
 Blue: 15 SB Wood, Ricky
 Brown/Gray 8 JD Styles, Gene
 Chocolate: 16 SD Non-Member
 Steel: 2 JD Non-Member
 Tort: 9 SD Non-Member

DATE: 2/26/00
 SHOW: Wichita Valley RBA-Show A
 WHERE: Henrietta, TX
 JUDGE: Christi Reeder
 DUTCH: 24
 BOB: Black SB Non-Member
 BOS: Brown/Gray SD O Haver, W.H.
 Black: 10 SB Non-Member
 Blue: 6 JD O Haver, W.H.
 Brown/Gray 5 SB Non-Member
 Chocolate: 1 JD O Haver, W.H.
 Chocolate: 1 JD O Haver, W.H.
 Tort: 2 JD O Haver, W.H.

DATE: 2/26/00
 SHOW: Wichita Valley RBA-Show B
 WHERE: Henrietta, TX
 JUDGE: Victor Vogts
 DUTCH: 21
 BOB: Brown/Gray JD O Haver, W.H.
 BOS: Blue JB O Haver, W.H.
 Black: 10 SD O Haver, W.H.
 Blue: 4 JB O Haver, W.H.
 Brown/Gray 4 JD O Haver, W.H.
 Chocolate: 1 JD O Haver, W.H.
 Tort: 2 JD O Haver, W.H.

DATE: 2/26/00
 DATE: 2/26/00
 SHOW: SW Missouri Hare Raisers
 WHERE: Joplin, MO
 JUDGE: Dr. Chris Hayhow
 DUTCH: 62
 BOB: Blue JD Tackett, Bob
 BOS: Blue SB Non-Member
 Black: 17 SB Gilmore, Jack
 Black: 17 SB Gilmore, Jack
 Blue: 21 JD Tackett, Bob
 Brown/Gray 4 SB Colborn, Jack & Charlott
 Chocolate: 3 SB Hoagland, Betty
 Steel: 1 SD Non-Member
 Tort: 16 JD Evenson, Jean

DATE: 2/26/00
 DATE: 2/26/00
 SHOW: SW Missouri Hare Raisers
 WHERE: Joplin, MO
 JUDGE: Ken McCracken
 DUTCH: 62
 BOB: Blue SB Non-Member
 BOS: Black SD Hoagland, Betty
 Black: 21 SB Gilmore, Jack
 Blue: 22 SB Non-Member
 Brown/Gray 4 SB Colborn, Jack & Charlott
 Brown/Gray 4 SB Colborn, Jack & Charlott
 Chocolate: 3 SB Hoagland, Betty
 Tort: 12 SD Wetzel, Arden



DANGLER'S
"Dutch in All Colors"

Carol Dangler


BOSV Tort '97 ARBA Conv.
 BOSV Black '98 NDS
 BOS '98 NDS

07957 St. Rt. 127
 Bryan, OH 43506
(419)636-5517

3/00

Jack & Ruth Wireman

of
 Jack's Bunnies
 Navaree, Ohio



No Bunnies, but still enjoy
 the shows. Dutch Blood in veins, I guess.

6/01

DATE: 2/26/00
SHOW: Central Montana RB
WHERE: Great Falls, MT
JUDGE: Allan Ormond
DUTCH: 10
BOB: Brown/Gray SB
Non-Member
BOS: Blue SD Non-Member
Black: 1
Blue: 3 SD Non-Member
Brown/Gray 5 SB Non-Member
Tort: 1 JB Non-Member

DATE: 2/26/00
SHOW: Central Montana RB

WHERE: Great Falls, MT
JUDGE: Eunita Boatman
WHERE: Convention
DUTCH: 12
BOB: Blue JB Non-Member
111
Brenda Dumas
BOS: Brown/Gray SD
Non-Member
Black: 2 JD Non-Member
Blue: 4 JB Non-Member

Brown/Gray 5 SD Non-Member
Tort: 1 JB Non-Member

DATE: 2/26/00
SHOW: California State
R&CBA-Show B

WHERE: Turlock, CA
JUDGE: Shannon Byrom
DUTCH: 59
BOB: Black SD Williamson, Beau
Black SB Schettler, Jim &
Fran
Black: 22 SD Williamson, Beau
Blue: 14 JB Lowey, Chris &
Denise
Brown/Gray 4 JD Schettler, Jim &
Chocolate: 11 SD Schettler, Jim &
Fran
Steel: 3 JB Schettler, Jim &
Tort: 5 JD Bullis, Terri

DATE: 2/26/00
SHOW: Georgia State R&CA-Show

WHERE: Perry, GA
JUDGE: John Soper
DUTCH: 13
BOB: Black JD Dill, Vern & Marti
BOS: Blue SB Dill, Vern & Marti
Black: 6 JD Dill, Vern & Marti
Blue: 4 SB Dill, Vern & Marti
Brown/Gray 1 SD Brewer, Ray &
Margie
Tort: 2 JB Brewer, Ray &
Margie

DATE: 2/26/00
SHOW: California State
R&CBA-Show A
WHERE: Turlock, CA
JUDGE: Randy Shumaker
DUTCH: 62
BOB: Blue JB Lowey, Chris &
Denise
BOS: Tort JD Bullis, Terri
Black: 22 JD Giron-Lee, Jill
Blue: 16 JB Lowey, Chris &
Denise
Brown/Gray 4 JD Schettler, Jim &
Chocolate: 12 JB Non-Member
Steel: 3 JB Schettler, Jim &
Tort: 5 JD Bullis, Terri

DATE: 2/26/00
SHOW: Georgia State R&CA-Show
WHERE: Perry, GA

JUDGE: Pam Jones
JUDGE: Pam Jones
DUTCH: 13
BOB: Black SD Brewer, Ray &
Margie
BOS: Black SB Dill, Vern & Marti
Black: 6 SD Brewer, Ray &
Margie
Blue: 4 JD Non-Member
Brown/Gray 1 SD Brewer, Ray &
Brown/Gray 1 SD Brewer, Ray &
Margie
Tort: 2 SB Non-Member

DATE: 2/27/00
SHOW: San Diego Beach &
RC-Show 1

WHERE: Del Mar, CA
JUDGE: Allan Barr
DUTCH: 26
DUTCH: 26
BOB: Black JD Purpus, Joanne
BOS: Black JB Purpus, Joanne
Black: 9 JD Purpus, Joanne
Blue: 5 SD Purpus, Joanne
Brown/Gray 7 JD Purpus, Joanne

Chocolate: 2 SB Non-Member
Tort: 3 SD Marshall, Kimberly

DATE: 2/27/00
SHOW: Western IL RBA
WHERE: Toulon, IL
JUDGE: Gary Grimm
DUTCH: 44

BOB: Black SD Graflund, David
BOS: Black SB Schwartz, Dan &
Dawn
Black: 22 SD Graflund, David
Blue: 9 JD Graflund, David
Brown/Gray 8 JB McAtee, Dennis
Chocolate: 1 JB Lorenz, Christine
Tort: 4 SB Hulva, Danny &

DATE: 2/27/00
SHOW: San Diego Beach &
RC-Show 2
WHERE: Del Mar, CA
JUDGE: Judy Paris
DUTCH: 23
BOB: Tort SB Marshall, Kimberly
BOS: Brown/Gray JD Purpus,
Joanne
Black: 9 JD Purpus, Joanne
Blue: 4 SD Purpus, Joanne
Brown/Gray 7 JD Purpus, Joanne
Tort: 3 SB Marshall, Kimberly

DATE: 2/27/00
SHOW: State Line RBA
SHOW: State Line RBA
JUDGE: WHERE:

JUDGE: Cathy Backus
DUTCH: 101
DUTCH: 101
BOB: Black SD Uran, Todd
BOS: Blue SB Giebel, Mark &
Black: 30 SD Uran, Todd

Blue: 16 SB Giebel, Mark &
Brown/Gray 16 SB Hooper, Kevin
Chocolate: 13 JD Hessick, Amber
Chocolate: 13 JD Hessick, Amber
Steel: 10 SB Hooper, Kevin
Tort: 16 JD Giebel, Mark &
Tort: 16 JD Giebel, Mark &

DATE: 3/4/00
SHOW: Central Florida RBA
WHERE: Orlando, FL
JUDGE: Laurie Hoehn
DUTCH: 37

BOB: Brown/Gray JB Styles,
Black SD Non-Member
BOS: Black SD Non-Member
Black: 15 SD Non-Member
Black: 15 SD Non-Member
Blue: 2 JB Non-Member
Brown/Gray 5 JB Styles, Gene
Chocolate: 6 SD Non-Member
Steel: 5 JB Non-Member
Tort: 4 JB Non-Member

DATE: 3/4/00
SHOW: Southern Indiana RBA
WHERE: Charlestown, IN
JUDGE: Randy Hickman
DUTCH: 27

BOB: Black JB Driskell, Keith
BOS: Brown/Gray SD Thomas,
Cara
Black: 9 JB Driskell, Keith
Blue: 1 JD Non-Member
Brown/Gray 12 SD Thomas, Cara
Chocolate: 1 SB Mathis, Denny
Steel: 1 JB Thomas, Cara
Tort: 3 SB Driskell, Keith

DATE: 3/4/00
SHOW: Southern Indiana RBA
WHERE: Charlestown, IN
JUDGE: Robert Byrne
DUTCH: 21
BOB: Brown/Gray SD Thomas,
Cara
BOS: Black JB Driskell, Keith
Black: 7 SD Driskell, Keith
Brown/Gray 11 SD Thomas, Cara
Chocolate: 1 SB Mathis, Denny
Steel: 1 JB Thomas, Cara
Tort: 1 SB Driskell, Keith

DATE: 3/4/00
SHOW: Michigan State Spring
SHOW: Michigan State Spring
WHERE: Bowling Green, OH Cathy Backus

WHERE: East Lansing, MI
Lowell Trausch JUDGE: DUTCH:

DUTCH: 111
BOB: Black JD Smith, Michael
BOS: Tort SB Smith, Michael
Black: 34 JD Smith, Michael

Blue: 20 SD Non-Member
Brown/Gray 11 JB Boon, David
Chocolate: 13 JD Micallef, Anthony
Chocolate: 13 JD Micallef, Anthony
Steel: 9 JD Boon, David
Tort: 24 SB Smith, Michael
Tort: 24 SB Smith, Michael

DATE: 3/4/00
SHOW: 4-County RC
WHERE: Brenham, TX
JUDGE: Don Mersiovsky
DUTCH: 25

BOB: Brown/Gray JD Barfield,
Rhonda
BOS: Brown/Gray JB Barfield, Rhonda
BOS: Brown/Gray JB Barfield,

Black: 12 JB Non-Member
Blue: 6 JB Non-Member
Brown/Gray 4 JD Barfield, Rhonda
Chocolate: 1 JD Barfield, Rhonda
Steel: 2 SD Non-Member

DATE: 3/4/00
SHOW: NW Georgia C&RC-Show 3
WHERE: Dalton, GA
JUDGE: Kitty Lynch
DUTCH: 61

BOB: Steel SB Wood, Ricky
BOS: Chocolate SD Gilbert, Greg
Black: 15 JB Wood, Ricky
Blue: 12 SB Wood, Ricky
Brown/Gray 12 JB Gilbert, Greg
Chocolate: 15 SD Gilbert, Greg
Steel: 4 SB Wood, Ricky
Tort: 3 SB Wood, Ricky



DATE: 3/4/00
 SHOW: Noble Co RFC
 WHERE: Columbia City, IN
 JUDGE: Chuck Pelham
 DUTCH: 29
 BOB: Black SB Shull, Reggie
 BOS: Black JD Worden, Robert
 Black: 9 SB Shull, Reggie
 Blue: 4 SB Fitch, Tim
 Brown/Gray 5 SB Worden, Robert
 Chocolate: 3 JD Burrey, Leon
 Steel: 5 JB Burrey, Leon
 Tort: 3 JB Shull, Reggie

DATE: 3/4/00
 SHOW: NW Georgia C&RC-Show 2
 WHERE: Dalton, GA
 JUDGE: Patti Fix
 DUTCH: 44
 BOB: Brown/Gray JD Gilbert,
 BOS: Black JB Wood, Ricky
 Black: 6 SD Non-Member
 Blue: 9 JB Wood, Ricky
 Brown/Gray 10 JD Gilbert, Greg
 Chocolate: 13 JD Gilbert, Greg
 Steel: 3 SB Wood, Ricky
 Tort: 3 SB Wood, Ricky

DATE: 3/4/00
 SHOW: Great Western Open-Show
 WHERE: Tulare, CA
 JUDGE: Allen Barr
 DUTCH: 46
 BOB: Black SD Williamson, Beau
 BOS: Black JB Giron-Lee, Jill
 Black: 24 SD Williamson, Beau
 Blue: 13 JB Lowey, Chris & Denise
 Brown/Gray 1 SD Schmall, Fred & Helen
 Chocolate: 5 SD Lowey, Chris & Denise
 Steel: 2 SB Schmall, Fred & Helen
 Tort: 1 JD Lowey, Chris & Denise

DATE: 3/5/00
 SHOW: Tri County RC
 WHERE: Taunton, MA
 JUDGE: Paul Jurgelson
 DUTCH: 39
 BOB: Tort SB Teixeira, Joaquim
 BOS: Tort SD Teixeira, Joaquim
 Black: 12 SD MacKinnon,
 Blue: 7 SD MacKinnon, Wayne
 Chocolate: 11 SD Teixeira, Joaquim
 Steel: 1 JB Non-Member
 Tort: 8 SB Teixeira, Joaquim

DATE: 3/4/00
 SHOW: Central Florida RBA
 WHERE: Orlando, FL
 JUDGE: Bob Koch
 DUTCH: 39
 BOB: Black JD Non-Member
 BOS: Brown/Gray JB Styles,
 Black: 14 JD Non-Member
 Blue: 3 JB Non-Member
 Brown/Gray 6 JB Styles, Gene
 Chocolate: 5 SD Non-Member
 Steel: 5 JD Non-Member
 Tort: 6 JB Non-Member

DATE: 3/4/00
 SHOW: NW Georgia C&RC-Show 1
 WHERE: Dalton, GA
 JUDGE: Rusty Westhoff
 DUTCH: 50
 BOB: Black JB Gilbert, Greg
 BOS: Brown/Gray JD Gilbert,
 Black: 8 JB Gilbert, Greg
 Blue: 10 JB Wood, Ricky
 Brown/Gray 13 JB Gilbert, Greg
 Chocolate: 13 JD Gilbert, Greg
 Steel: 3 SB Wood, Ricky
 Tort: 3 SB Wood, Ricky

DATE: 3/5/00
 SHOW: Northeast Missouri RBA-Show 2
 WHERE: Palmvra, MO
 JUDGE: John Grimm
 DUTCH: 26
 BOB: Blue SD Clark, Gary
 BOS: Steel SB Non-Member
 Black: 10 JD Non-Member
 Blue: 7 SD Clark, Gary
 Brown/Gray 3 SB Caldwell, Randal & Patty
 Chocolate: 3 SD Caldwell, Randal & Patty
 Steel: 1 SB Non-Member
 Tort: 2 SB Caldwell, Randal & Patty

DATE: 3/5/00
 SHOW: Northeast Missouri RBA-Show 1
 WHERE: Palmvra, MO
 JUDGE: Walt Grebner
 DUTCH: 26
 BOB: Blue JD Tackett, Bob
 BOS: Steel SB Non-Member
 Black: 10 SB Tackett, Bob
 Blue: 7 JD Tackett, Bob
 Brown/Gray 3 SD Caldwell, Randal & Patty
 Chocolate: 3 SD Caldwell, Randal & Patty
 Steel: 1 SB Non-Member
 Tort: 2 SD Caldwell, Randal & Patty

DATE: 3/4/00
 SHOW: Lake Area RC
 WHERE: Obertlin, LA
 JUDGE: JL Dino
 DUTCH: 17
 BOB: Black SB Daniel, Jimmie
 BOS: Black SD Daniel, Jimmie
 Black: 7 SB Daniel, Jimmie
 Blue: 3 JB Non-Member
 Brown/Gray 1 JD Non-Member
 Chocolate: 3 SD Daniel, Jimmie
 Steel: 1 SB Guidry, TJ &
 Tort: 2 SD Daniel, Jimmie

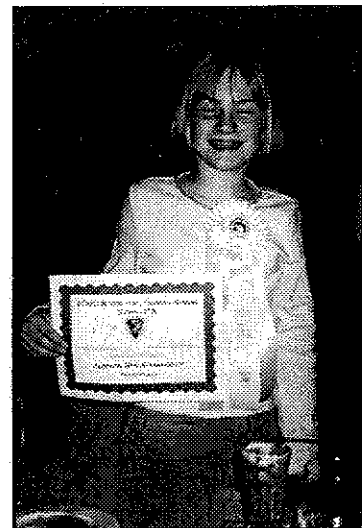
DATE: 3/4/00
 SHOW: Evergreen RB
 WHERE: Enumclaw, WA
 JUDGE: Cindy Wickizer
 DUTCH: 59
 BOB: Black SD Nelsen, Pete & Debra
 BOS: Brown/Gray JB Nelsen, Pete & Debra
 Black: 23 SD Nelsen, Pete & Debra
 Blue: 14 SD Nelsen, Pete & Debra
 Brown/Gray 10 SD Nelsen, Pete & Debra
 Chocolate: 5 SD Nelsen, Pete & Debra
 Steel: 4 SD Non-Member
 Tort: 3 SD Non-Member

DATE: 3/5/00
 DATE: 3/5/00
 SHOW: Mississippi Valley RB
 SHOW: Mississippi Valley RB
 WHERE: DeWitt, IA
 JUDGE: Harry Boots III
 DUTCH: 26
 BOB: Blue SB McAtee, Dennis
 BOS: Black JD Rawailot, Jorri & Cindy
 Black: 9 JD Rawailot, Jorri & Cindy
 Blue: 3 SB McAtee, Dennis
 Brown/Gray 7 JB McAtee, Dennis
 Chocolate: 2 JB McAtee, Dennis
 Tort: 5 SB Hulva, Danny &

DATE: 3/5/00
 SHOW: Evergreen RB-Show B
 WHERE: Enumclaw, WA
 JUDGE: Vern Palmblad
 DUTCH: 51
 BOB: Black SD Nelsen, Pete & Debra
 BOS: Black SD Nelsen, Pete & Debra
 Debra
 BOS: Blue SB Nelsen, Pete & Debra
 Black: 19 SD Nelsen, Pete & Debra
 Blue: 11 SB Nelsen, Pete & Debra
 Brown/Gray 10 SD Nelsen, Pete & Debra
 Brown/Gray 10 SD Nelsen, Pete & Debra
 Chocolate: 6 SD Nelsen, Pete & Debra
 Steel: 2 SD Non-Member
 Tort: 3 SD Non-Member

DATE: 3/4/00
 SHOW: Great Western Open-Show
 WHERE: Tulare, CA
 JUDGE: Jamie Green
 DUTCH: 46
 BOB: Black SD Williamson, Beau
 BOS: Blue JB Giron-Lee, Jill
 Black: 24 SD Williamson, Beau
 Blue: 13 SD Giron-Lee, Jill
 Brown/Gray 1 SD Schmall, Fred & Helen
 Chocolate: 5 JD Lowey, Chris & Denise
 Steel: 2 SB Lowey, Chris & Denise
 Tort: 1 JD Lowey, Chris & Denise

Chocolate: 5 SD Nelsen, Pete & Debra
 Steel: 4 SD Non-Member
 Tort: 3 SD Non-Member



Julie Bergene - Kansas

DOWD'S DUTCH

DON & DANA
 (319)237-6392



222 Grove Street
 Box 88
 Fredericksburg, Iowa 50630

12/00

DATE: 3/5/00
 SHOW: York Co RCBA
 WHERE: Bair, PA
 JUDGE: Howard Keller
 DUTCH: 68
 BOB: Black SB Coe, Catherine
 BOS: Black SD Bollinger, Stacey
 Black : 22 SB Coe, Catherine
 Blue : 10 SB Pugh, Jack
 Brown/Gray 9 SB Bounds, Billy
 Chocolate : 9 SB Graybeal, Zachary & Nathan
 Steel : 7 SB Bounds, Billy
 Tort : 11 SB Bounds, Billy

DATE: 3/11/00
 SHOW: California R&CS
 WHERE: Pomona, CA
 JUDGE: Joey Shults
 DUTCH: 32
 BOB: Brown/Gray JB Purpus, Joanne
 BOS: Black SD Simpson, Lori
 Black : 15 SD Simpson, Lori
 Blue : 5 SB Non-Member
 Brown/Gray 7 JB Purpus, Joanne
 Chocolate : 2 SD Non-Member
 Steel : 1 JD Non-Member
 Tort : 2 JB Diaz, Brenda

DATE: 3/11/00
 SHOW: High Plains RC-Show 2
 WHERE: Henderson, CO
 JUDGE: Jan Coffelt
 DUTCH: 13
 BOB: Black JB Farness, Reece
 BOS: Chocolate JD Non-Member
 Black : 5 JB Farness, Reece
 Blue : 1 SD Farness, Reece
 Chocolate : 4 SB Non-Member
 Steel : 2 SB Farness, Reece
 Tort : 1 SB Farness, Reece

DATE: 3/12/00
 SHOW: Carroll Co R&CBA
 WHERE: Westminster, MD
 JUDGE: Wendy Feaga
 DUTCH: 64
 BOB: Brown/Gray SB Bounds, Billy
 BOS: Black SD Jensen, Ashley
 Black : 23 SB Bounds, Billy
 Blue : 9 SB Grisez, Ashley
 Brown/Gray 5 SB Bounds, Billy
 Chocolate : 6 JD Grisez, Ashley
 Steel : 4 JD Coe, Catherine
 Tort : 17 SB Grisez, Ashley

DATE: 3/11/00
 SHOW: Golden Country RBA
 WHERE: Orland, CA
 JUDGE: Bruce Brown
 DUTCH: 10
 BOB: Brown/Gray SB Mead,
 BOS: Steel JD Non-Member
 Black : 2 JB Non-Member
 Blue : 2 SD Mead, Rose
 Brown/Gray 2 SB Mead, Rose
 Chocolate : 1 SB Mead, Rose
 Steel : 2 JD Non-Member
 Tort : 1 SB Mead, Rose

DATE: 3/11/00
 SHOW: Louisiana Dutch RC
 WHERE: Greensburg, LA
 JUDGE: Chuck Alexander
 DUTCH: 24
 BOB: Black SB Daniel, Jimmie
 BOS: Chocolate SD Daniel, Jimmie
 Black : 8 SB Daniel, Jimmie
 Blue : 6 SB Daniel, Jimmie
 Brown/Gray 2 JB Palmer, Nancy
 Chocolate : 3 SD Daniel, Jimmie
 Steel : 1 JB Palmer, Nancy
 Tort : 4 JB Daniel, Jimmie

DATE: 3/11/00
 SHOW: Golden Country RBA
 WHERE: Orland, CA
 JUDGE: Don Matthews
 DUTCH: 10
 BOB: Brown/Gray SB Mead,
 BOS: Brown/Gray SD Mead,
 Black : 2 SB Non-Member
 Blue : 2 SD Mead, Rose
 Brown/Gray 2 SB Mead, Rose
 Chocolate : 1
 Steel : 2 JD Non-Member
 Tort : 1 SB Mead, Rose

DATE: 3/18/00
 SHOW: Llano Estacado RBA
 WHERE: Levelland, TX
 JUDGE: Bob Sorrels
 DUTCH: 2
 BOB: Black SB Non-Member
 BOS: Black SD Non-Member
 Black : 2 SB Non-Member

DATE: 3/11/00
 SHOW: Louisiana Dutch RC
 WHERE: Greensburg, LA
 JUDGE: Bobby Crosby
 DUTCH: 10
 BOB: Black JB Non-Member
 BOS: Black JD Non-Member

DATE: 3/11/00
 SHOW: Kaw Valley RC
 WHERE: Gardner, KS
 JUDGE: David Kroenke
 DUTCH: 32
 BOB: Black JB Lehmann, Rick

DATE: 3/12/00
 SHOW: Ohio Valley RB
 WHERE: Hamilton, OH
 WHERE: Hamilton, OH
 JUDGE: Ron Rohrig
 DUTCH: 53
 BOB: Steel SB Hooper, Kevin
 BOS: Blue JD Hooper, Kevin
 Black : 10 SB Hooper, Kevin
 Blue : 17 SB Weber, Keith
 Brown/Gray 12 SB Hooper, Kevin
 Chocolate : 5 SB Hooper, Kevin
 Steel : 3 SB Hooper, Kevin
 Tort : 6 SB Hooper, Kevin

DATE: 3/18/00
 SHOW: Emerald Empire RBA-Show
 WHERE: Eugene, OR
 JUDGE: Roger Hassenpflug

Black : 4 JB Non-Member
 Brown/Gray 2 JB Non-Member
 Chocolate : 2 JB Non-Member
 Steel : 1 SB Non-Member
 Tort : 1 JD Non-Member

BOS: Blue SD Lehmann, Rick
 Black : 10 JB Lehmann, Rick
 Blue : 10 JB Bergene, Bob
 Brown/Gray 6 JB Non-Member
 Chocolate : 1 JD Bergene, Bob
 Steel : 1 SD Non-Member
 Tort : 4 JD Bergene, Bob

DATE: 3/12/00
 SHOW: Badger R&C Show
 WHERE: Jefferson, WI
 WHERE: Jefferson, WI
 JUDGE: David Cardinal
 DUTCH: 91
 BOB: Blue JD Wiltman, Warren
 BOS: Black SB Guetschow,
 Black : 37 SD Guetschow,
 Blue : 24 JD Wiltman, Warren
 Brown/Gray 4 JB Shirley, George
 Chocolate : 6 SB Mixdorf, Eric & Sharon

DUTCH: 60
 BOB: Black JD Non-Member
 BOS: Black JD Non-Member
 BOS: Brown/Gray JB Nelsen, Pete & Debra
 Black : 18 JD Non-Member
 Blue : 16 JD Non-Member
 Brown/Gray 12 JB Nelsen, Pete & Debra
 Chocolate : 5 SD Neisen, Pete & Debra
 Chocolate : 5 SD Nelsen, Pete & Debra
 Steel : 1 JD Non-Member
 Tort : 8 JD Dobson, Jill

DATE: 3/11/00
 SHOW: Louisiana Dutch RC
 Dr. Chris Hayhow
 WHERE: Greensburg, LA
 JUDGE: Bobby Crosby
 DUTCH: 24
 BOB: Black SB Palmer, Nancy
 BOS: Blue SB Daniel, Jimmie
 Black : 8 JD Palmer, Nancy
 Blue : 6 SB Daniel, Jimmie
 Brown/Gray 2 JB Palmer, Nancy
 Chocolate : 3 SD Daniel, Jimmie

DATE: 3/11/00
 SHOW: High Plains RC-Show 1
 WHERE: Henderson, CO
 JUDGE: Erik Bengtson
 DUTCH: 5
 BOB: Chocolate SD
 BOS: Black SB Non-Member
 Black : 1 SB Non-Member
 Chocolate : 4 SD Non-Member

Steel : 4 JB Shirley, George
 Tort : 16 SB Mixdorf, Eric & Sharon

DATE: 3/18/00
 SHOW: Emerald Empire RBA-Show
 WHERE: Eugene, OR
 JUDGE: WHERE: Eugene, OR
 Dr. Chris Hayhow
 DUTCH: 66
 BOB: Black JD Non-Member
 BOS: Blue JB Nelsen, Pete & Debra
 Black : 20 JD Non-Member
 Blue : 18 JD Non-Member
 Blue : 18 JD Non-Member
 Brown/Gray 13 SD Non-Member
 Chocolate : 5 SD Nelsen, Pete & Debra
 Steel : 1 JD Non-Member
 Tort : 9 JB Dobson, Jill

1st Quarter 2000

	Income	Expenses
January	\$ 1,131.38	\$ 2,022.55
February	\$ 1,656.00	\$ 710.29
March	\$ 2,529.00	\$ 1,834.49
Checking Account Balance		\$ 13,091.60
Outstanding Checks		\$ 1,459.49
Total		\$ 11,632.11
Not Credited Deposits		\$ 4,185.00
Total		\$ 15,817.11

General Fund	\$ 15,817.11
Cont Fund	\$ 5,467.14
Cert of Dep	\$ 2,409.37
Total Fund Available	\$ 23,693.62

Respectfully Submitted, Doreen Bengtson,
 Treasurer

DATE: 3/18/00
SHOW: Long Island RBA
WHERE: Old Bethpage, NY
JUDGE: Paul Jurgelonis
DUTCH: 11
BOB: Black SB Sartori, Sharon
BOS: Blue JD Sartori, Sharon
Black: 3 SB Sartori, Sharon
Blue: 2 JD Sartori, Sharon
Brown/Gray 2 JD Dahl, Valerie
Chocolate: 2 SD Sartori, Sharon
Steel: 1 SD Dahl, Valerie
Tort: 1 JB DisQualified

DATE: 3/18/00
SHOW: Central Valley RBA-Show B
WHERE: Hanford, CA

JUDGE: Joe Lago

DUTCH: 54

BOB: Black JB Schettler, Jim &

Fran

BOS: Blue SD Giron-Lee, Jill
Black: 20 JB Schettler, Jim &
Fran

Blue: 13 SD Giron-Lee, Jill
Brown/Gray 3 JD Schettler, Jim &
Chocolate: 10 SB Non-Member
Steel: 3 JB Schettler, Jim &

Tort: 5 SB Non-Member

DATE: 3/18/00
SHOW: Sunshine State RBA
WHERE: Palmetto, FL
JUDGE: Norm McNary
DUTCH: 27

BOB: Black JB Styles, Gene
BOS: Black SD Non-Member
Black: 13 JB Styles, Gene

Blue: 3 JD Non-Member
Brown/Gray 2 JB Styles, Gene

Chocolate: 1 SD Non-Member
Steel: 6 SB May, Norman
Tort: 2 JB Non-Member

DATE: 3/18/00
SHOW: Tri-Cities RA

WHERE: Kennewick, WA
JUDGE: Charmaine Rudolph

DUTCH: 38

BOB: Black JD Gregg, Lloyd
BOS: Blue SB Gregg, Lloyd
Black: 10 JD Gregg, Lloyd
Blue: 4 SB Gregg, Lloyd
Brown/Gray 4 SB Gregg, Lloyd
Chocolate: 7 SB Non-Member
Steel: 1 SD Non-Member
Tort: 12 SD Non-Member

DATE: 3/18/00
SHOW: Central Valley RBA
WHERE: Hanford, CA
JUDGE: Joey Shults
DUTCH: 54
BOB: Black SD Williamson, Beau
BOS: Black SB Schettler, Jim &
Fran
Black: 20 SD Williamson, Beau
Blue: 13 SD Giron-Lee, Jill
Brown/Gray 3 JD Schettler, Jim &
Chocolate: 10 JB Schettler, Jim &
Fran

Steel: 3 SB Gouette, Tracy
Tort: 5 SB Non-Member

DATE: 3/18/00
SHOW: South Central Iowa RBA

WHERE: Colfax, IA

JUDGE: Harry Boots IV

DUTCH: 52

BOB: Blue SB McAtee, Dennis
BOS: Brown/Gray SD McCune, Jess

Black: 10 SB McCune, Jess
Blue: 10 SB McAtee, Dennis
Brown/Gray 15 SD McCune, Jess
Chocolate: 6 JB McCune, Jess

Steel: 6 SB McCune, Jess
Tort: 5 SB Mixdorf, Eric &
Sharon

DATE: 3/18/00
SHOW: North Carolina RC-Show A
WHERE: Winston-Salem, NC

JUDGE: Bill Whaley
DUTCH: 60
BOB: Black JB Mullinax, Fred &
Kathy
BOS: Blue JD Mullinax, Fred &
Kathy

Black: 10 JB Mullinax, Fred &
Kathy
Blue: 17 JD Mullinax, Fred &
Kathy

Brown/Gray 13 SD Mullinax, Fred &
Kathy

Chocolate: 13 JD Gilbert, Greg
Steel: 2 JD Mullinax, Fred &
Kathy

Tort: 5 SD Mullinax, Fred &
Kathy

DATE: 3/18/00
SHOW: Sunshine State RBA
WHERE: Palmetto, FL
JUDGE: TL Andrews
DUTCH: 25
BOB: Brown/Gray JB Styles,
BOS: Steel SD May, Norman
Black: 15 JB Styles, Gene
Blue: 4 JD Manning, Ed
Brown/Gray 1 JB Styles, Gene
Chocolate: 1 SD Non-Member
Steel: 4 SD May, Norman

DATE: 3/18/00
SHOW: North Central Indiana RBA
WHERE: Goshen, IN

JUDGE: John Richter

DUTCH: 59

BOB: Chocolate SD Nesbitt, Dan

BOS: Brown/Gray SB Worden,
Robert

Black: 12 SD Nesbitt, Dan
Blue: 13 SD Shaw, Lynn

Brown/Gray 5 SB Worden, Robert
Chocolate: 12 SD Nesbitt, Dan
Steel: 4 SB Nesbitt, Dan
Tort: 13 SB Nesbitt, Dan

DATE: 3/18/00
SHOW: North Carolina RBA-Show B
SHOW: North Carolina RBA-Show B
WHERE: Winston-Salem, NC
JUDGE: Karen Heintz
JUDGE: Karen Heintz
DUTCH: 63

BOB: Tort SD Mullinax, Fred &
Kathy

BOS: Blue SB Mullinax, Fred &
Kathy

Black: 13 JB Mullinax, Fred &
Kathy

Blue: 15 SB Mullinax, Fred &
Blue: 15 SB Mullinax, Fred &
Kathy

Brown/Gray 15 JD Gilbert, Greg
Chocolate: 13 JD Gilbert, Greg

Steel: 2 JB Mullinax, Fred &
Steel: 2 JB Mullinax, Fred &
Kathy

Tort: 5 SD Mullinax, Fred &
Tort: 5 SD Mullinax, Fred &
Kathy

DATE: 3/19/00
SHOW: Massachusetts Fed of R&C
WHERE: Taunton, MA
JUDGE: Lindsay Benoit
DUTCH: 45
BOB: Black SB Non-Member
BOS: Black JD Teixeira,
Black: 14 SB Non-Member
Blue: 10 JB MacKinnon,
Brown/Gray 3 SD Non-Member
Chocolate: 6 JD Teixeira, Joaquim
Steel: 2 JD Non-Member
Tort: 10 SB Teixeira, Joaquim

DATE: 3/19/00
SHOW: Washington Co RBA
WHERE: Washington, PA
WHERE: Washington, PA

JUDGE: Bill Patrick

JUDGE: Bill Patrick

DUTCH: 101

DUTCH: 101

BOB: Brown/Gray SB Imes,

BOB: Brown/Gray SB Imes,

BOS: Chocolate SD Russ,

Black: 27 JB Imes, John

Blue: 28 SD Imes, John

Blue: 28 SD Imes, John

Brown/Gray 18 SB Imes, John

Brown/Gray 18 SB Imes, John

Chocolate: 13 SD Russ, Renee

Steel: 4 SD Seamer, Robert

Tort: 11 SD Saunier, Rachel &
Daniel

DATE: 3/19/00

DATE: 3/19/00

SHOW: Washington Co RBA

WHERE: Washington, PA

WHERE: Washington, PA

JUDGE: Al Butler

DUTCH: 33

BOB: Blue JB Dunmire, Howard

BOB: Blue JB Dunmire, Howard

BOS: Brown/Gray JD Imes,

Black: 4 JB Imes, John

Blue: 15 JB Dunmire, Howard

Brown/Gray 13 JD Imes, John

Brown/Gray 13 JD Imes, John

Steel: 1 SB Imes, John

DATE: 3/19/00

SHOW: North Carolina RBA

SHOW: North Carolina RBA

WHERE: Winston-Salem, NC

WHERE: Winston-Salem, NC

JUDGE: Rusty Westhoff

JUDGE: Rusty Westhoff

DUTCH: 29

BOB: Black JB Gilbert, Greg

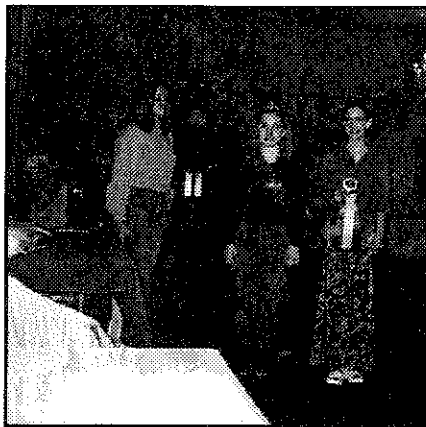
BOS: Black JD Gilbert, Greg

Black: 5 JB Gilbert, Greg

Blue: 6 JB Non-Member

Brown/Gray 10 SB Non-Member

Chocolate: 8 SD Gilbert, Greg



Chocolate : 2 JD Hessick, Robert
 Steel : 4 SD Hessick, Robert
 Tort : 2 JD Giebel, Mark & Ken

Steel : 3 JD McAtee, Dennis
 Tort : 6 JD Graffund, David

Brown/Gray 6 SD Thomas, Cara
 Chocolate : 2 JD Non-Member
 Steel : 2 SD Non-Member

Denise
 Chocolate : 2 SB Lowey, Chris & Denise
 Tort : 2 JB Lowey, Chris & Denise

DATE: 3/25/00
 SHOW: Ventura RBA-Show A
 WHERE: Ventura, CA
 JUDGE: Mike Lovejoy
 DUTCH: 14
 BOB: Tort JB Diaz, Brenda

DATE: 4/1/00
 SHOW: Carroll Co Ohio RC
 WHERE: Carrollton, OH
 JUDGE: Al Butler
 DUTCH: 43
 BOB: Brown/Gray JB Imes,
 BOS: Black SD Imes, John

DATE: 4/1/00
 SHOW: SERBA
 WHERE: Oriand, CA
 JUDGE: Chuck Gomez
 DUTCH: 10
 BOB: Black JB Lowey, Chris & Denise
 BOS: Black JD Lowey, Chris & Denise

DATE: 4/1/00
 SHOW: Texas Panhandle RBA-Show B
 WHERE: Pampa, TX
 JUDGE: Randy Dickerson

BOS: Black SD Diaz, Brenda
 Black : 3 SD Diaz, Brenda

Black : 10 SD Imes, John
 Blue : 9 SD Imes, John

Black : 4 JB Lowey, Chris & Denise
 Blue : 2 JD Lowey, Chris & Denise

DUTCH: 1
 BOB: Black SB Willis, Pat
 BOS: Black SB Willis, Pat
 Black : 1 SB Willis, Pat

Blue : 8 JB Eubank, John
 Steel : 1 SB Gouette, Tracy
 Tort : 2 JB Diaz, Brenda

Brown/Gray 13 JB Imes, John
 Chocolate : 8 SD Thompson, Shelly
 Steel : 1 SB Weaver, Thomas
 Tort : 2 SD Smith, Jim

Chocolate : 2 SB Lowey, Chris & Denise
 Tort : 2 JB Lowey, Chris & Denise

DATE: 4/1/00
 SHOW: Texas Panhandle RBA-Show A
 WHERE: Pampa, TX

DATE: 3/25/00
 SHOW: Southside VA RB-Show 2
 WHERE: Chesterfield, VA

DATE: 4/1/00
 SHOW: Osceola 4-H SAA

DATE: 4/1/00
 SHOW: San Antonio RBA
 WHERE: Killeen, TX
 JUDGE: Carrol Hooks
 DUTCH: 22
 BOB: Steel JB Non-Member
 BOS: Black SD Non-Member

JUDGE: Unknown
 DUTCH: 1
 BOB: Black SB Willis, Pat
 BOS: Black : 1 SB Willis, Pat

JUDGE: Ron Mauck
 DUTCH: 48
 BOB: Chocolate SB Wood,
 BOS: Tort SD Freed, Stan &
 Black : 10 SB Moneymaker, Liz
 Blue : 12 SB Grisez, Ashley
 Brown/Gray 7 JD Freed, Stan &
 Chocolate : 5 SB Wood, Ricky
 Steel : 4 SB Wood, Ricky

WHERE: Ewart, MI
 JUDGE: John Wettevredin
 DUTCH: 11
 BOB: Black SB Non-Member
 BOS: Blue SD Cushman, Dale
 Black : 4 SB Non-Member
 Blue : 2 SD Cushman, Dale
 Tort : 5 SB Cushman, Dale

DATE: 4/1/00
 SHOW: Golden Prairie RBA

Tort : 10 JB Freed, Stan &

DATE: 4/1/00

Black : 10 SD Non-Member
 Blue : 7 SB Non-Member
 Brown/Gray 1 SD Non-Member
 Brown/Gray 1 SD Non-Member
 Steel : 2 JB Non-Member
 Tort : 2 SB Non-Member

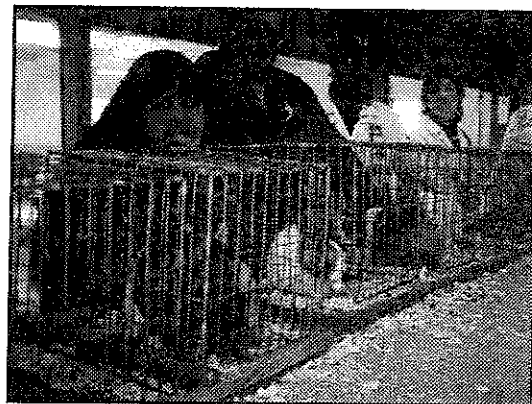
WHERE: Lafayette, IN
 JUDGE: Gary Grimm
 JUDGE: Gary Grimm
 DUTCH: 41
 DUTCH: 41
 BOB: Black SB Goeglein, Stan
 BOS: Black JD Fitch, Tim
 Black : 12 SB Goeglein, Stan
 Blue : 8 SB Fitch, Tim
 Brown/Gray 3 SD Goeglein, Stan
 Chocolate : 4 JB Nesbitt, Dan
 Steel : 6 SD Nesbitt, Dan
 Tort : 8 JD Nesbitt, Dan

DATE: 3/26/00
 SHOW: Fayette County RBA
 WHERE: Wilmington, OH

SHOW: Jackson Purchase RBC-Show A
 WHERE: Hopkinsville, KY
 JUDGE: Ron Rohrig

JUDGE: Brian Hartzell
 DUTCH: 84
 BOB: Steel SB Hooper, Kevin
 BOS: Brown/Gray SD Thomas, Cara
 Black : 17 JB Billups, Rick &
 Blue : 16 JD Hooper, Kevin
 Brown/Gray 14 SD Thomas, Cara
 Chocolate : 19 SD Thompson, Shelly
 Steel : 8 SB Hooper, Kevin
 Tort : 10 SD Bogan, Kevin & Vicki

DUTCH: 16
 BOB: Black SB Non-Member
 BOS: Brown/Gray JD Thomas, Cara
 Black : 7 SB Non-Member
 Blue : 1 JB Thomas, Cara
 Brown/Gray 4 JD Thomas, Cara
 Chocolate : 2 JD Non-Member
 Steel : 2 SD Non-Member



Harlequin Dutch Fan Club

Eric/Sharon Mixdorf, CarolDangler, Jack Teixeira, Mark Pecaric, Bob Tachett, Gary Clark, Valerie Dahl, Jay Imes, Jill Dobson, Janet Wickerham, Sue Macombie

DATE: 4/1/00
 SHOW: South Florida RBA-Show A
 WHERE: Tampa, FL
 JUDGE: Ray Brewer
 DUTCH: 38
 BOB: Tort JD Non-Member
 BOS: Blue JB Non-Member
 Black: 20 JD Non-Member
 Blue: 2 JB Non-Member
 Brown/Gray 5 JB Styles, Gene
 Chocolate: 3 SD Non-Member
 Steel: 4 SD Non-Member
 Tort: 4 JD Non-Member

DATE: 4/1/00
 SHOW: South Florida RBA-Show B
 WHERE: Tampa, FL
 JUDGE: David Cardinal
 DUTCH: 28
 BOB: Steel SD Non-Member
 BOS: Brown/Gray JB Styles,
 Black: 15 JD Non-Member
 Blue: 2 JD Manning, Ed
 Brown/Gray 2 JB Styles, Gene
 Chocolate: 3 SD Non-Member
 Steel: 4 SD Non-Member
 Tort: 2 SB Non-Member

DATE: 4/2/00
 SHOW: Decatur Area RBA
 WHERE: Decatur, IL
 JUDGE: Butch Hall
 DUTCH: 21
 BOB: Blue SD Non-Member
 BOS: Black SB Non-Member

Black: 4 SB Non-Member
 Blue: 7 SD Non-Member
 Brown/Gray 3 JD Non-Member
 Chocolate: 1 SB Non-Member
 Steel: 2 JB Non-Member
 Tort: 4 JD Non-Member

DATE: 4/2/00
 SHOW: Bay State RBA
 WHERE: Taunton, MA

JUDGE: Paul Jurgelonis

DUTCH: 41
 BOB: Tort SD Teixeira, Joaquim
 BOS: Tort SB Teixeira, Joaquim
 Black: 11 JB Teixeira, Joaquim
 Blue: 6 JD Sartori, Sharon
 Brown/Gray 3 SD Non-Member
 Chocolate: 9 SD Teixeira, Joaquim
 Steel: 2 SD Dahl, Valerie

Tort: 10 SD Teixeira, Joaquim

DATE: 4/2/00
 SHOW: Rochester RBA
 WHERE: Rochester, NY
 JUDGE: Bill Patrick
 DUTCH: 24
 BOB: Tort SB Dishaw, Larry
 BOS: Tort SD Dishaw, Larry
 Black: 2 JB Dishaw, Larry
 Blue: 4 SB Dishaw, Larry
 Brown/Gray 4 JB Dishaw, Larry
 Chocolate: 4 SD Andrews, C, J, &
 Steel: 3 JD Dishaw, Larry
 Tort: 7 SB Dishaw, Larry

DATE: 4/2/00
 SHOW: Rochester RBA
 WHERE: Rochester, NY
 JUDGE: Bing Harris
 DUTCH: 39
 BOB: Chocolate SD Russ,
 BOS: Black SB Russ, Renee
 Black: 10 SB Russ, Renee
 Blue: 9 SB Dishaw, Larry
 Brown/Gray 4 JB Dishaw, Larry
 Chocolate: 6 SD Russ, Renee
 Steel: 3 JD Dishaw, Larry
 Tort: 7 SD Dishaw, Larry

DATE: 4/8/00
 SHOW: Stevens Co RBA-Show A
 WHERE: Duncan, OK
 JUDGE: Ken McCracken
 DUTCH: 27
 BOB: Black SB Non-Member
 BOS: Black JD Non-Member

Black: 9 SB Non-Member
 Blue: 3 SD Rudd, Sarah
 Brown/Gray 10 SD O Haver, W.H.
 Chocolate: 3 JD O Haver, W.H.
 Tort: 2 JD O Haver, W.H.

DATE: 4/8/00
 SHOW: Baltimore & Howard Co RCBA
 WHERE: W. Friendship, MD

JUDGE: Lyman Franklin

DUTCH: 89
 BOB: Black SB Coe, Catherine
 BOS: Black JD Bounds, Billy
 Black: 22 SB Coe, Catherine
 Blue: 16 SD Wood, Ricky
 Brown/Gray 13 SB Bounds, Billy
 Chocolate: 10 SD Non-Member
 Steel: 5 SB Wood, Ricky

Tort: 23 SD Wood, Ricky

DATE: 4/8/00
 SHOW: Cal State R&CBA-Show A
 WHERE: Tulare, CA
 JUDGE: Brooke Baldwin
 DUTCH: 19
 BOB: Black SD Williamson, Beau
 BOS: Tort JB Diaz, Brenda
 Black: 9 SD Williamson, Beau
 Blue: 6 SD Giron-Lee, Jill
 Chocolate: 2 SB Non-Member
 Steel: 1
 Tort: 1 JB Diaz, Brenda

DATE: 4/8/00
 SHOW: Stevens Co RBA-Show B
 WHERE: Duncan, OK
 JUDGE: Vic Vogts
 DUTCH: 26
 BOB: Blue JD O Haver, W.H.
 BOS: Brown/Gray JB Non-Member
 Black: 8 SB Non-Member
 Blue: 3 JD O Haver, W.H.
 Brown/Gray 10 JB Non-Member
 Chocolate: 3 JB O Haver, W.H.
 Tort: 2 JD O Haver, W.H.

DATE: 4/8/00
 SHOW: Crossroads RBA
 WHERE: Hiddenite, NC
 JUDGE: Bill Patrick
 DUTCH: 8
 BOB: Blue JB Brewer, Ray & Margie
 BOS: Brown/Gray SD Bryant, Terry
 Black: 2 SD Bryant, Terry
 Blue: 2 JB Brewer, Ray & Margie
 Brown/Gray 4 SD Bryant, Terry

DATE: 4/9/00
 SHOW: Springfield RBC
 WHERE: Springfield, IL
 JUDGE: Walt Grebner

DUTCH: 25

BOB: Steel JD Snodgrass/Thompson, R, & LT
 BOS: Blue SB Runkles, Ken & Carolyn
 Black: 8 SD Lorenz, William
 Blue: 6 SB Runkles, Ken & Carolyn
 Brown/Gray 4 JD Snodgrass/Thompson, R, & LT
 Steel: 2 JD Snodgrass/Thompson, R, & LT
 Tort: 5 JB Non-Member

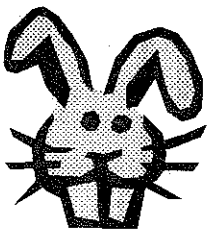
DATE: 4/9/00
 SHOW: New England Show Circuit
 WHERE: Devens, MA
 JUDGE: Alan Platt
 DUTCH: 48
 BOB: Black JB Teixeira,
 BOS: Blue JD MacKinnon,
 Black: 15 JB Teixeira, Joaquim
 Blue: 10 JD MacKinnon,
 Brown/Gray 2 SD Dahl, Valerie
 Chocolate: 9 SD Teixeira, Joaquim
 Steel: 2 SD Dahl, Valerie
 Tort: 10 SD Teixeira, Joaquim

DATE: 4/9/00
 SHOW: Cal State R&CBA-Show B
 WHERE: Tulare, CA
 JUDGE: Glen Carr
 DUTCH: 19
 BOB: Black SD Williamson, Beau
 BOS: Black JB Giron-Lee, Jill
 Black: 9 SD Williamson, Beau
 Blue: 6 SD Giron-Lee, Jill
 Chocolate: 2 SB Non-Member
 Steel: 1 SB Non-Member
 Tort: 1 JB Diaz, Brenda

DATE: 4/9/00
 SHOW: Cal State R&CBA
 WHERE: Tulare, CA
 JUDGE: Shannon Byrom
 DUTCH: 33
 BOB: Black SD Williamson, Beau
 BOS: Black SB Williamson, Beau
 Black: 16 SD Williamson, Beau
 Blue: 11 SD Giron-Lee, Jill
 Brown/Gray 2 SD Non-Member
 Chocolate: 2 SB Non-Member
 Steel: 1 SB Gouette, Tracy
 Tort: 1 JB Diaz, Brenda

DATE: 4/9/00
 SHOW: Miami Valley RC
 WHERE: Greenville, OH
 JUDGE: Kevin Hooper
 DUTCH: 52
 BOB: Steel SD Non-Member
 BOS: Black JB Non-Member
 Black: 10 JB Non-Member
 Blue: 12 SB Bogan, Kevin & Vicki
 Brown/Gray 7 SD Non-Member
 Chocolate: 13 JD Non-Member
 Steel: 3 SD Non-Member
 Tort: 7 SB Bogan, Kevin &

SEE YOU IN COLUMBUS!



OFFICIAL JUDGES: 77TH ARBA CONVENTION

OPEN: Richard Gehr
 Randy Waggoner
 Bruce Ormsby

YOUTH: Erik Bengtson

DATE: 4/15/00
 SHOW: N. Cent. Alabama
RBC-Show A
 WHERE: Decatur, AL
 JUDGE: Bill Gendren
 DUTCH: 10
 BOB: Black JD Dill, Vern & Marti
 BOS: Black SB Non-Member
 Black : 7 JD Dill, Vern & Marti
 Brown/Gray 1 JD Dill, Vern & Marti
 Chocolate : 1 JD Non-Member
 Steel : 1 SD Non-Member

DATE: 4/15/00
 SHOW: Silver Sage R&CBA-Show

WHERE: Carson City, NV
 JUDGE: Brooke Baldwin
 DUTCH: 22
 BOB: Steel JD Schettler, Jim & Fran
 BOS: Blue JB Schettler, Jim & Fran

Black : 7 SD Schettler, Jim &
 Blue : 3 JB Schettler, Jim &
 Brown/Gray 2 JD Schettler, Jim &
 Chocolate : 6 JB Non-Member
 Steel : 3 JD Schettler, Jim &
 Tort : 1 JB Schettler, Jim &

DATE: 4/15/00
 SHOW: Silver Sage R&CBA-Show
 WHERE: Carson City, NV
 JUDGE: Chuck Gomez
 DUTCH: 22
 BOB: Black JD Schettler, Jim & Fran
 BOS: Blue JB Schettler, Jim & Fran
 Black : 7 JD Schettler, Jim &
 Blue : 3 JB Schettler, Jim &
 Brown/Gray 2 JD Schettler, Jim &
 Chocolate : 6 SB Non-Member
 Steel : 3 JB Schettler, Jim &
 Tort : 1 JB Schettler, Jim &

DATE: 4/15/00
 SHOW: N. Cent. Alabama
RBC-Show B
 WHERE: Decatur, AL
 JUDGE: David Cardinal
 DUTCH: 10
 BOB: Black SB Dill, Vern & Marti
 BOS: Brown/Gray JD Dill, Vern & Marti
 Black : 7 SB Dill, Vern & Marti
 Brown/Gray 1 JD Dill, Vern & Marti
 Chocolate : 1 JD Non-Member
 Steel : 1 SD Non-Member

DATE: 4/16/00
 SHOW: Cedar Rapids RBA
 WHERE: Cedar Rapids, IA
 JUDGE: Mary Wunderlin
 DUTCH: 41
 BOB: Steel SB McCune, Jess
 BOS: Black JD McCune, Jess
 Black : 7 JD McCune, Jess
 Blue : 7 SB Dowd, Don
 Brown/Gray 12 SB McCune, Jess
 Chocolate : 3 JB McAtee, Dennis
 Steel : 6 SB McCune, Jess
 Tort : 6 SB Mixdorf, Eric & Sharon

DATE: 4/16/00
 SHOW: NY Convention Show
 WHERE: Fulton, NY
 JUDGE: Bonnie Burdick
 DUTCH: 12
 BOB: Steel SB Dishaw, Larry

BOS: Steel JD Dishaw, Larry
 Black : 2 SB Kaiser, Gail
 Blue : 1 SB Dishaw, Larry
 Brown/Gray 1 JB Dishaw, Larry
 Chocolate : 2 SB Dishaw, Larry
 Steel : 2 SB Dishaw, Larry
 Tort : 4 SB Dishaw, Larry

DATE: 4/22/00
 SHOW: Indiana State RBA
 WHERE: Lafayette, IN
 JUDGE: Bill Gendren
 DUTCH: 23
 BOB: Blue SB Fitch, Tim
 BOS: Blue SB Fitch, Tim
 BOS: Black SD Fitch, Tim
 Black : 7 SD Fitch, Tim
 Blue : 5 SB Fitch, Tim
 Chocolate : 3 SD Nesbitt, Dan
 Steel : 4 SD Nesbitt, Dan
 Tort : 4 JD Nesbitt, Dan

DATE: 4/29/00
 SHOW: California State R&CS
 WHERE: Orland, CA
 JUDGE: Lavonne Leverett
 DUTCH: 31
 BOB: Blue SB Schettler, Jim & Fran
 BOS: Black JD Schettler, Jim & Fran
 Black : 8 SB Lowey, Chris & Denise
 Blue : 8 SB Schettler, Jim & Fran
 Brown/Gray 1 JD Schettler, Jim & Fran
 Chocolate : 7 SB Lowey, Chris & Denise
 Steel : 4 JD Schettler, Jim & Fran
 Tort : 3 SB Schettler, Jim & Fran

DATE: 4/29/00
 SHOW: California State R&CS
 WHERE: Orland, CA
 JUDGE: Brooke Baldwin
 DUTCH: 31
 BOB: Chocolate JB Schettler, Jim & Fran
 BOS: Black JD Schettler, Jim & Fran
 Black : 8 JD Schettler, Jim & Fran
 Blue : 8 SD Carson, Diana
 Brown/Gray 1 JD Schettler, Jim & Fran
 Chocolate : 7 JB Schettler, Jim & Fran
 Steel : 4 JD Schettler, Jim & Fran
 Tort : 3 JD Lowey, Chris & Denise

Local Dutch Clubs:

Think about bidding a future National Dutch Show. It can bring a lot of excitement in your area!! It is really not that difficult, as there are lots of people in the ADRC that can lend a hand.

For more information contact Kevin Hooper, Doreen Bengtson or your district director.

OPEN SPECIAL WINNERS

2/12/00	Best in Show	Kern Co RBA	Giron-Lee, Jill
2/12/00	Best in Show	Stonebelt RBA	Nesbitt, Dan
3/25/00	Best in Show	Empire State RBA	Dishaw, Larry
3/25/00	Best in Show	Lapeer Area RR	Dietrich, Tom
4/1/00	Best Reserve in Show	South Florida RBA-Show A	Non-Member
4/8/00	Best in Show	Cal State R&CBA-Show A	Williamson, Beau
4/9/00	Best Reserve in Show	Cal State R&CBA-Show B	Williamson, Beau
4/22/00	Best 4 Class	Indiana State RBA	Fitch, Tim
4/29/00	Best Reserve in Show	California State R&CS	Schettler, Jim & Fran

YOUTH SPECIAL WINNERS

2/12/00	Best 4 Class	Arizona State R&CBA	Non-Member
2/20/00	Best in Show	Cumberland Co RBA	Provost, Renee
3/18/00	Best in Show	North Central Indiana RBA	Slack, Kelli
4/1/00	Best in Show	Glenwood 4-H VYHB-Show A	Mendonca, Amy

Summary Show Reports - Youth

DATE: 1/22/00
 SHOW: Pasadena RBA-Show B
 WHERE: Pasadena, TX
 JUDGE: Mary Crawford
 DUTCH: 40
 BOB: Black JD Moerbe, Chris
 BOS: Steel SB Non-Member
 Black: 23 JD Moerbe, Chris
 Blue: 12 JD Non-Member
 Brown/Gray 1 JB Non-Member
 Chocolate: 1 SB Non-Member
 Steel: 1 SB Non-Member
 Tort: 2 SD Non-Member

DATE: 1/22/00
 SHOW: Little River YRBA
 WHERE: Santa Maria, CA
 JUDGE: Brooke Baldwin
 DUTCH: 50
 BOB: Tort SD Brown, Zachary
 BOS: Black JB Non-Member
 Black: 20 SD Non-Member
 Blue: 9 JD Non-Member
 Brown/Gray 5 SD Allen, Jennifer

Chocolate: 4 SD Non-Member
 Steel: 5 SD Allen, Jennifer
 Tort: 7 SD Brown, Zachary

DATE: 1/22/00
 SHOW: Little River YRBA
 WHERE: Santa Maria, CA
 JUDGE: Joe Lugo
 DUTCH: 51
 BOB: Steel SD Allen, Jennifer
 BOS: Black JB Non-Member
 Black: 21 JD Non-Member
 Blue: 8 SD Non-Member
 Brown/Gray 5 JD Brown, Zachary
 Chocolate: 4 SD Brown, Zachary
 S

DATE: 2/17/00
 SHOW: Florida State Fair
 WHERE: Tampa, FL
 JUDGE: Marvin Cummings
 DUTCH: 19
 BOB: Black SB Capshaw, Deke
 BOS: Steel SD Non-Member
 Black: 10 SB Capshaw, Deke
 Blue: 3 SD Non-Member
 Brown/Gray 3 SD Non-Member
 Steel: 1 SD Non-Member
 Tort: 2 SD Non-Member

DATE: 2/19/00
 SHOW: RP of Alabama
 WHERE: Florence, AL
 JUDGE: Don Burchfield
 DUTCH: 7
 BOB: Black SB Lance, Gage
 BOS: Black SD Lance, Gage
 Black: 5 SB Lance, Gage
 Blue: 1 SB Grady, Clarissa
 Brown/Gray 1 SB Non-Member

DATE: 2/5/00
 SHOW: S.P.A.R.K. Youth-Show A
 WHERE: Penacola, FL
 JUDGE: Tom Green
 DUTCH: 5
 BOB: Black SB Non-Member
 BOS: Black JD Non-Member
 Black: 4 SB Non-Member
 Blue: 1 SB Non-Member

DATE: 2/5/00
 SHOW: S.P.A.R.K. Youth-Show B
 WHERE: Pensacola, FL
 JUDGE: Bill Gendren
 DUTCH: 5
 BOB: Black SB Non-Member
 BOS: Black JD Non-Member
 Black: 4 SB Non-Member
 Blue: 1 SB Non-Member

DATE: 2/5/00
 SHOW: Pennsylvania State RBA
 WHERE: Lebanon, PA
 JUDGE: Bonnie Burdick
 DUTCH: 61
 BOB: Brown/Gray SB Graybeal, Zachary & Nathan

BOS:
 Black: 18 JD Small, Corrie
 Blue: 6 SB Grisez, Ashley
 Brown/Gray 8 SB Graybeal, Zachary & Nathan
 Chocolate: 14 JB Graybeal, Zachary & Nathan
 Steel: 2 JB Graybeal, Zachary & Nathan
 Tort: 13 JB Jensen, Ashley

DATE: 2/6/00
 SHOW: Pacific WR&CSC

SHOW: Yakima Valley RBA
 WHERE: Naches, WA
 JUDGE: Dale Wilcox
 DUTCH: 11
 BOB: Black SB Non-Member
 BOS: Black SD Non-Member
 Black: 4 SB Non-Member
 Blue: 2 JD Non-Member
 Tort: 5 SD McCrackin, Calvin

DATE: 2/19/00
 SHOW: San Antonio Livestk Show
 WHERE: San Antonio, TX
 JUDGE:
 DUTCH: 0
 BOB:
 BOS:

DATE: 2/6/00
 SHOW: Pacific WR&CSC
 WHERE: Vallejo, CA
 JUDGE: Joe Lugo
 DUTCH: 19
 BOB: Black SD Non-Member
 BOS: Black SB Non-Member
 Black: 7 SD Non-Member
 Blue: 8 JD Balliet, Kristine
 Brown/Gray 1 SD Non-Member
 Chocolate: 2 SD Non-Member
 Tort: 1

DATE: 2/6/00
 SHOW: Tri County RBA
 WHERE: Princeton, IL
 JUDGE: Mike Avesing
 DUTCH: 62
 BOB: Blue JB Weiersheuser, Tamber
 BOS: Tort SD Trybus, Fritz
 Black: 14 SB Weiersheuser, Tamber
 Blue: 15 JB Weiersheuser, Tamber
 Brown/Gray 5 SB Trybus, Fritz
 Chocolate: 10 SB Non-Member
 Steel: 8 SD Non-Member
 Tort: 10 SD Trybus, Fritz

DATE: 2/6/00
 SHOW: Pennsylvania State RBA
 WHERE: Lebanon, PA
 JUDGE: Sam Rizzo
 DUTCH: 33
 BOB: Black SB Biddle (MHS), Todd
 BOS: Black JD Biddle (MHS), Todd
 Black: 16 SB Biddle (MHS),

DUTCH: 22
 BOB: Steel SD Non-Member
 BOS: Black JB Non-Member
 Black: 8 JB Non-Member
 Blue: 6 JB Craig, Andrew
 Brown/Gray 2 SB Hulva, Brenna
 Chocolate: 2 JB Hulva, Brenna
 Steel: 2 SD Non-Member
 Tort: 2 JD Hulva, Daniel

DATE: 2/20/00
 SHOW: San Antonio Livestock
 WHERE: San Antonio, TX
 JUDGE:
 DUTCH: 0
 BOB:
 BOS:

DATE: 2/12/00
 SHOW: Arizona State R&CBA
 WHERE: Casa Grande, AZ
 JUDGE: Bill Patrick
 DUTCH: 14
 BOB: Tort SB Non-Member
 BOS: Black JD Non-Member
 Black: 7 SB Non-Member
 Blue: 2 SB Non-Member
 Brown/Gray 1 JB Non-Member
 Chocolate: 2 SB Non-Member
 Steel: 1 SB Non-Member
 Tort: 1 SB Non-Member

DATE: 2/12/00
 SHOW: Arizona State R&CBA
 WHERE: Casa Grande, AZ
 JUDGE: David Cardinal
 DUTCH: 14
 BOB: Black JD Non-Member
 BOS: Brown/Gray JB Non-Member
 Black: 7 JD Non-Member
 Blue: 2 SB Non-Member
 Brown/Gray 1 JB Non-Member
 Brown/Gray 1 JB Non-Member
 Chocolate: 2 SB Non-Member
 Steel: 1 SB Non-Member
 Tort: 1 SB Non-Member

DATE: 2/12/00
 SHOW: Stonebelt RBA
 WHERE: Bloomington, IN
 JUDGE: Dave Hauser
 DUTCH: 12
 BOB: Black SD Gerhart,
 BOS: Blue SB Non-Member
 BOS: Blue SB Non-Member
 Black: 5 SD Gerhart, Adrienne
 Blue: 6 SB Non-Member
 Steel: 1 SB Non-Member

JUDGE: Dr. Chris Hayhow
 DUTCH: 48
 BOB: Black SD Barnes, Briony
 BOS: Black JB Non-Member
 Black: 15 SD Barnes, Briony
 Blue: 7 SB Non-Member
 Brown/Gray 9 SD Powell, Natalie
 Chocolate: 3 SD Henry, Ryan
 Tort: 14 SB Non-Member

DATE: 2/26/00
 SHOW: Wichita Valley RBA
 WHERE: Henrietta, TX
 JUDGE: Christi Reeder
 DUTCH: 2
 BOB: Blue SD Rudd, Sarah
 BOS: Black JB Non-Member
 Black: 1 JB Non-Member
 Blue: 1 SD Rudd, Sarah

DATE: 2/26/00
 SHOW: Bunny Boosters RC
 WHERE: Shenandoah, IA
 JUDGE: Wendy Feaga
 DUTCH: 22
 BOB: Brown/Gray SD
 Non-Member
 BOS: Tort SB Non-Member
 Black: 8 JD Non-Member
 Blue: 2 SB Non-Member
 Brown/Gray 2 SD Non-Member
 Chocolate: 7 JD Non-Member
 Tort: 3 SB Non-Member

DATE: 2/26/00
 SHOW: Georgia State R&CA-Show
 WHERE: Perry, GA
 JUDGE: Rusty Westhoff
 DUTCH: 2
 BOB: Blue SB Non-Member
 BOS:
 Black: 1 SB Non-Member
 Blue: 1 SB Non-Member

DATE: 2/26/00
 SHOW: Georgia State R&CA-Show
 WHERE: Perry, GA
 JUDGE: Richard Allebach
 DUTCH: 2
 BOB: Blue SB Non-Member
 BOS:
 Black: 1
 Blue: 1 SB Non-Member

DATE: 2/27/00
 SHOW: Western IL RBA
 WHERE: Toulon, IL

JUDGE: John Grimm
 DUTCH: 30
 BOB: Black JD Weiersheuser,
 Tamber
 BOS: Black SB Kelly, Autumn
 Black: 9 JD Weiersheuser,
 Tamber
 Blue: 12 SD Hulva, Miriam
 Brown/Gray 4 JD Weiersheuser,
 Tamber
 Chocolate: 1 JB Hulva, Michelle
 Steel: 2 SD Non-Member
 Tort: 2 JB Hulva, Daniel

DATE: 2/27/00
 SHOW: State Line RBA
 WHERE: Bewing Green, OH
 JUDGE: Bob Shaftoe
 DUTCH: 153
 BOB: Black JB Antonelli, Rachel
 BOS: Chocolate SD Kline,
 Black: 61 JB Antonelli, Rachel
 Blue: 30 SD Kline, Megan
 Brown/Gray 12 JB Non-Member
 Chocolate: 14 SB Kline, Megan
 Steel: 8 SB Lape, Cody &
 Tort: 28 JD Kline, Megan

DATE: 3/1/00
 SHOW: Mississippi Valley RB
 WHERE: DeWitt, IA
 JUDGE: Harry Boots III
 DUTCH: 20
 BOB: Black SB Kelly, Autumn
 BOS: Steel SD Non-Member
 Black: 9 SB Kelly, Autumn
 Blue: 2 JB Weiersheuser,
 Tamber
 Brown/Gray 4 JD Weiersheuser,
 Tamber
 Chocolate: 1 JB Hulva, Michelle
 Steel: 2 SD Non-Member
 Tort: 2 JB Hulva, Daniel

DATE: 3/4/00
 SHOW: Great Western Youth-Show
 WHERE: Tulare, CA

JUDGE: Brooke Baldwin
 DUTCH: 13
 BOB: Black SB Non-Member
 BOS: Brown/Gray SD

Non-Member
 Black: 3 SB Non-Member
 Blue: 7 SB Non-Member
 Brown/Gray 3 SD Non-Member

DATE: 3/4/00
 SHOW: Michigan State RBYA
 WHERE: East Lansing, MI
 JUDGE: Ray Hall
 DUTCH: 89
 BOB: Blue SD Smith, Emily
 BOS: Steel SB Stump, Steven
 Black: 33 JD Smith, Emily
 Blue: 15 SD Smith, Emily
 Brown/Gray 4 SD Stump, Steven
 Chocolate: 12 SD Non-Member
 Steel: 6 SD Stump, Steven
 Tort: 19 SB Non-Member

DATE: 3/4/00
 SHOW: Lake Area RC
 WHERE: Oberlin, IA
 JUDGE: JL Dino
 DUTCH: 21
 BOB: Chocolate JD Non-Member
 BOS: Black SB Non-Member
 Black: 9 SB Non-Member
 Blue: 1 JB Non-Member
 Brown/Gray 2 JD Non-Member
 Chocolate: 5 JD Non-Member
 Steel: 2 SB Non-Member
 Tort: 2 JD Non-Member

DATE: 3/4/00
 SHOW: 4-County RC
 WHERE: Brenham, TX
 JUDGE: Don Mersiovsky
 DUTCH: 18
 BOB: Black SB Moerbe, Chris
 BOS: Blue JD Moerbe, Chris
 Black: 12 SB Moerbe, Chris
 Blue: 6 JD Moerbe, Chris

DATE: 3/4/00
 SHOW: Southern Indiana RBA
 WHERE: Charlestown, IN

JUDGE: Randy Hickman
 DUTCH: 2
 BOB: Black SB Non-Member
 BOS: Black SB Non-Member
 BOS:
 Black: 2 SB Non-Member

DATE: 3/4/00
 SHOW: Great Western Youth-Show
 WHERE: Tulare, CA

JUDGE: Chris Zenny
 DUTCH: 14
 BOB: Black SB Non-Member
 BOS: Blue SD Non-Member

Black: 3 SB Non-Member
 Blue: 8 SB Toth, Julie
 Brown/Gray 3 SB Toth, Julie
 Brown/Gray 3 SB Toth, Julie

DATE: 3/4/00
 SHOW: NW Georgia C&RC-Show 2
 WHERE: Dalton, GA
 JUDGE: Kitty Lynch
 DUTCH: 26
 BOB: Steel SD Gilpin, Diana
 BOS: Black SB Non-Member
 Black: 13 JD Non-Member
 Blue: 3 SB Non-Member
 Brown/Gray 4 SB Non-Member
 Chocolate: 4 JD Non-Member
 Steel: 2 SD Gilpin, Diana

DATE: 3/4/00
 SHOW: NW Georgia C&RC
 WHERE: Dalton, GA
 JUDGE: Roger Banks
 DUTCH: 26
 BOB: Steel SD Gilpin, Diana
 BOS: Brown/Gray SB
 Non-Member
 Black: 13 SD Lance, Gage
 Blue: 3 SD Non-Member
 Brown/Gray 4 SB Non-Member
 Chocolate: 4 SD Non-Member
 Steel: 2 SD Gilpin, Diana

DATE: 3/4/00
 SHOW: Noble Co RFC
 WHERE: Columbia City, IN
 JUDGE: Chuck Pelham
 DUTCH: 32
 BOB: Black SD Slack, Kelli
 BOS: Steel SB Berger, Drew
 Black: 4 SD Slack, Kelli
 Blue: 3 JD Slack, Kelli
 Brown/Gray 10 SB Berger, Drew
 Chocolate: 5 SD Berger, Drew
 Steel: 3 SB Berger, Drew
 Tort: 7 SD Berger, Drew

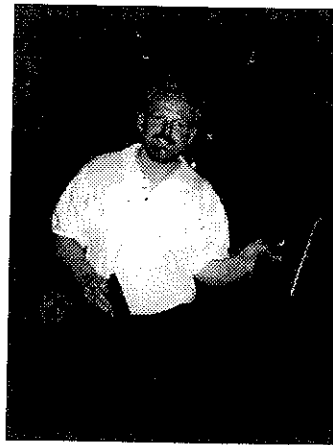
DATE: 3/5/00
 SHOW: Tri County RC
 SHOW: Tri County RC
 WHERE: Taunton, MA
 JUDGE: Paul Jurgelonis
 DUTCH: 19
 BOB: Blue SD Provost, Renee
 BOS: Blue SD Provost, Renee
 BOS: Black SB Provost, Renee
 Black: 4 SB Provost, Renee
 Blue: 6 SD Provost, Renee

Chocolate: 1 SD Non-Member
 Tort: 8 SD Blauss, Tim

DATE: 3/5/00
 DATE: 3/5/00
 SHOW: Northeast Missouri

RBA-Show 1
RBA-Show 1
 WHERE: Palmyra, MO
 JUDGE: Walt Grebner
 DUTCH: 5

BOB: Steel SD Non-Member
 BOS: Chocolate JB Non-Member
 Blue: 1 JD Non-Member
 Brown/Gray 1 SB Non-Member
 Chocolate: 1 JB Non-Member
 Steel: 1 SD Non-Member
 Tort: 1 SD Non-Member



DATE: 3/5/00
 SHOW: Northeast Missouri
RBA-Show 2
 WHERE: Palmvra, MO
 JUDGE: John Grimm
 DUTCH: 5
 BOB: Steel SD Non-Member
 BOS: Brown/Gray SB Non-Member
 Blue: 1 JD Non-Member
 Brown/Gray 1 SB Non-Member
 Chocolate: 1 JB Non-Member
 Steel: 1 SD Non-Member
 Tort: 1
 E

DATE: 3/11/00
 SHOW: Kaw Valley RC
 WHERE: Gardner, KS
 JUDGE: David Kroenke
 DUTCH: 16
 BOB: Brown/Gray JB Powell, Natalie
 BOS: Black SD Barnes, Briony
 Black: 8 SB Non-Member
 Blue: 2 JB Barnes, Briony
 Brown/Gray 4 JB Powell, Natalie
 Tort: 2 SB Non-Member

DATE: 3/11/00
 SHOW: Montgomery Co Fair
 WHERE: Conroe, TX
 JUDGE: Conall Addison
 DUTCH: 8
 BOB: Black SD Andrews,
 BOS: Black JB Andrews,
 Black: 6 SD Andrews, Heather
 Blue: 1 SB Fernandez, Kristen
 Chocolate: 1 JD Fernandez, Kristen

DATE: 3/11/00
 SHOW: Keep It Hopping RC-Show A

WHERE: Pomona, CA
 JUDGE: Joe Lugo
 DUTCH: 5
 BOB: Black SB Crippen, Erica
 BOS: Black SD Crippen, Erica
 Black: 3 SB Crippen, Erica

DATE: 3/11/00
 SHOW: High Plains RC
 WHERE: Henderson, CO
 JUDGE: Jan Coffelt
 DUTCH: 6
 BOB: Brown/Gray SB Farness, Creighton
 BOS: Chocolate SD
 Black: 2 SB Non-Member
 Brown/Gray 2 SB Farness, Creighton
 Chocolate: 2 SB Non-Member

DATE: 3/11/00
 SHOW: High Plains RC
 WHERE: Henderson, CO
 JUDGE: Erik Bengtson
 DUTCH: 14
 BOB: Brown/Gray SB Farness, Creighton
 BOS: Steel SD Farness, Reece
 Black: 6 JB Farness, Reece
 Blue: 1 SD Farness, Reece
 Brown/Gray 2 SB Farness, Creighton
 Chocolate: 2 SB Non-Member
 Steel: 2 SB Farness, Reece
 Tort: 1 SB Farness, Reece

DATE: 3/11/00
 SHOW: Keep It Hopping RC-Show B
 WHERE: Pomona, CA
 JUDGE: Jake Kuntz
 DUTCH: 3
 BOB: Black SB Crippen, Erica
 BOS: Black SD Crippen, Erica
 Black: 3 SB Crippen, Erica

DATE: 3/11/00
 SHOW: Sonoma-Marin RBA
 WHERE: Rohnert Park, CA
 JUDGE: Chris Zemny
 DUTCH: 8
 BOB: Black SB Non-Member
 BOS: Brown/Gray JB Non-Member
 Black: 4 JD Non-Member
 Blue: 2 SB Non-Member
 Brown/Gray 1 JB Non-Member
 Steel: 1 SB Non-Member

DATE: 3/11/00
 SHOW: Pope Co Fair Hares
 WHERE: Russellville, AR
 JUDGE: Bobby Walker
 DUTCH: 10
 BOB: Black SB Henry, Ryan
 BOS: Black SD Non-Member
 Black: 7 SB Henry, Ryan
 Blue: 1 JB Henry, Ryan
 Brown/Gray 1
 Tort: 1 SB Non-Member

DATE: 3/11/00
 SHOW: High Plains RC
 WHERE: Henderson, CO
 JUDGE: Jan Coffelt
 DUTCH: 6
 BOB: Brown/Gray SB Farness, Creighton
 BOS: Chocolate SD
 Black: 2 SB Non-Member
 Brown/Gray 2 SB Farness, Creighton
 Chocolate: 2 SB Non-Member

DATE: 3/11/00
 SHOW: Louisiana Dutch RC
 WHERE: Greensburg, LA
 JUDGE: Chuck Alexander
 DUTCH: 10
 BOB: Black SB Non-Member
 BOS: Chocolate JD Non-Member
 Black: 4 SB Non-Member
 Brown/Gray 2 JB Non-Member
 Chocolate: 2 JB Non-Member
 Steel: 1 SB Non-Member
 Tort: 1 JD Non-Member

DATE: 3/12/00
 SHOW: Badger RB
 WHERE: Jefferson, WI
 JUDGE: Marv Wunderlin
 DUTCH: 97
 BOB: Black SB Wayne, Tiffany
 BOS: Steel SD Trybus, Fritz
 Black: 21 SB Wayne, Tiffany
 Black: 21 SB Wayne, Tiffany
 Blue: 17 JB Burgi, Ciara
 Blue: 17 JB Burgi, Ciara
 Brown/Gray 5 SD Trybus, Fritz
 Chocolate: 17 SB Non-Member
 Steel: 12 SB Trybus, Fritz
 Tort: 25 SD Trybus, Fritz

DATE: 3/12/00
 SHOW: Ohio Valley RB
 WHERE: Hamilton, OH
 JUDGE: Ron Rohrig
 DUTCH: 48
 BOB: Black SD Non-Member
 BOS: Steel SB Non-Member
 Black: 13 SD Non-Member
 Blue: 13 JB Non-Member
 Brown/Gray 6 SB Non-Member
 Chocolate: 6 SB Non-Member
 Steel: 8 SB Non-Member
 Steel: 8 SB Non-Member
 Tort: 2 JD Non-Member

DATE: 3/18/00
 SHOW: Central Valley RBA
Youth-Show A
 WHERE: Hanford, CA
 JUDGE: Jennifer Milburn
 DUTCH: 17
 BOB: Black JB Non-Member
 BOS: Black SD Non-Member
 Black: 8 JB Non-Member
 Blue: 7 SB Non-Member
 Brown/Gray 2 SB Non-Member

DATE: 3/18/00
 SHOW: Sunshine State RBA
 WHERE: Palmetto, FL
 JUDGE: Norm McNary
 DUTCH: 5
 BOB: Black SB Vernon, Chance
 BOS: Blue JD Vernon, Chance
 Black: 2 SB Vernon, Chance
 Blue: 2 JD Vernon, Chance
 Brown/Gray 1 JD Non-Member

DATE: 3/18/00
 SHOW: Central Valley RBA
 SHOW: Central Valley RBA Youth-Show

WHERE: Hanford, CA
 JUDGE: Allan Ormond
 DUTCH: 17
 BOB: Blue SB Non-Member
 BOS: Black SD Non-Member
 Black: 8 JB Non-Member
 Blue: 7 SB Non-Member
 Blue: 7 SB Non-Member
 Brown/Gray 2 SB Non-Member
 Brown/Gray 2 SB Non-Member

DATE: 3/18/00
 SHOW: North Central Indiana RBA
 WHERE: Goshen, IN
 JUDGE: John Richter
 DUTCH: 62
 BOB: Black SD Slack, Kelli
 BOS: Blue SB Non-Member
 Black: 12 SD Slack, Kelli
 Blue: 11 SB Non-Member
 Blue: 11 SB Non-Member
 Brown/Gray 16 SB Antonelli, Rachel
 Chocolate: 6 SB Berger, Drew
 Steel: 9 SB Non-Member
 Tort: 8 SB Antonelli, Rachel

DATE: 3/18/00
 SHOW: Long Island RBA
 SHOW: Long Island RBA
 WHERE: Old Bethpage, NY
 JUDGE: Gary Fellers
 DUTCH: 11
 BOB: Blue SB Varsam, N,J,J,P
 BOS: Brown/Gray JD Weber,
 Black: 7 SB Varsam, N,J,J,P
 Blue: 1 SB Varsam, N,J,J,P
 Brown/Gray 1 JD Weber, Ken
 Tort: 2 SB Non-Member

Thanks Jill Dobson,
 JackWireman and Don
 Johnston for sending pictures
 from York.



Next DR deadline is Aug 10.
 Articles and pictures needed from
 the youth contest winners at the
 York NDS -

DATE: 3/18/00
SHOW: South Central Iowa RBA
WHERE: Coffax, IA
JUDGE: Harry Boots IV
DUTCH: 15
BOB: Brown/Gray SB Non-Member
BOS: Chocolate SD
Black : 6 SD Non-Member
Blue : 4 SB Non-Member
Brown/Gray 2 SB Non-Member
Chocolate : 1 SD Non-Member
Tort : 2 SB Non-Member

DATE: 3/19/00
SHOW: Massachusetts Fed of R&C
WHERE: Taunton, MA
JUDGE: Lindsay Benoit
DUTCH: 20
BOB: Black SD Cristina, Johnathan
BOS: Blue JB Provost, Renee
Black : 6 SD Cristina, Johnathan
Blue : 6 SD Provost, Renee
Brown/Gray 1 JD Weber, Ken
Chocolate : 1 SD Non-Member
Tort : 6 SD Blauss, Tim

DATE: 3/19/00
Jeff Albright
SHOW: Washington Co Youth RBA
WHERE: Washington, PA
JUDGE: Al Butler
DUTCH: 58
BOB: Tort SD Saunier, Rachel & Daniel
BOS: Blue SB Grisez, Ashley
2 JD Non-Member
Black : 22 SB Saunier, Rachel & Daniel
Blue : 10 JD Grisez, Ashley
Brown/Gray 5 SB Non-Member
Chocolate : 10 JD Grisez, Ashley
Steel : 1 JD Grisez, Ashley
Tort : 10 SD Saunier, Rachel & Daniel

DATE: 3/19/00
SHOW: Ponv Express RC
WHERE: Cameron, MO
JUDGE: Robert Wallace
DUTCH: 10
BOB: Black SB Non-Member
BOS: Chocolate SD
Black : 7 SB Non-Member
Chocolate : 2 SD Non-Member
Steel : 1 SB Non-Member

DATE: 3/25/00
SHOW: Lapeer Area RR
WHERE: Lapeer, MI
JUDGE: Carla Wilson
DUTCH: 87
BOB: Blue SD Smith, Emily
BOS: Black SB Moll, Greg
Black : 32 SB Moll, Greg
Blue : 21 SD Smith, Emily
Brown/Gray 6 SB Smith, Emily
Chocolate : 8 SB Non-Member
Steel : 1 SB Smith, Emily
Tort : 19 SD Non-Member

DATE: 3/25/00
SHOW: Country RB-Show 2
WHERE: Belen, NM
JUDGE: Wenton Carlton
DUTCH: 13
BOB: Brown/Gray SD Brown, Kassie
BOS: Black SB Gadilauskas,
Black : 9 SB Gadilauskas, Karin
Brown/Gray 3 SD Brown, Kassie
Chocolate : 1 SD Moulder, Cody

DATE: 3/25/00
SHOW: NE Ohio RF
WHERE: Jefferson, OH
JUDGE: Dennis Holcomb
DUTCH: 43
BOB: Chocolate SD Russ,
BOS: Black SB Bickelhaupt,
Black : 21 SB Bickelhaupt, Katie
Blue : 5 SB Russ, Renee
Brown/Gray 8 SD Bickelhaupt, Katie
Chocolate : 4 SD Russ, Renee
Chocolate : 4 SD Russ, Renee
Tort : 5 JD Saunier, Rachel & Daniel

DATE: 3/25/00
SHOW: Whitewater Valley RBA

WHERE: Connersville, IN
JUDGE: Terry Fender
DUTCH: 26
BOB: Blue SB Non-Member
BOS: Blue SD Gerhart, Adrienne
Black : 8 JB Weber, Brian
Blue : 5 SB Non-Member
Brown/Gray 3 SB Non-Member
Chocolate : 7 SD Non-Member
Steel : 3 SB Gerhart, Adrienne

DATE: 3/25/00
SHOW: Frostbite Falls RC
WHERE: Hawley, MN
JUDGE: John Grimm
DUTCH: 8
BOB: Black SB Non-Member
BOS: Black JD Non-Member
Black : 4 SB Non-Member
Blue : 3 SB Fitzgerald,
Brown/Gray 1 SB Non-Member

DATE: 3/25/00
SHOW: Empire State RBA
WHERE: Fulton, NY
JUDGE: Mike D'Amico
DUTCH: 36
BOB: Brown/Gray SD Graybeal, Zachary & Nathan
BOS: Chocolate SB Graybeal, Zachary & Nathan
Black : 13 JD Gadd, Chelsea
Blue : 3 SB Non-Member
Brown/Gray 3 SD Graybeal, Zachary & Nathan
Chocolate : 11 JD Graybeal, Zachary & Nathan
Steel : 3 SB Graybeal, Zachary & Nathan
Tort : 3 SD Non-Member

DATE: 3/25/00
SHOW: Country RB-Show 1
WHERE: Belen, NM
JUDGE: Randy Shumaker
DUTCH: 13
DUTCH: 13
BOB: Black JD Gadilauskas,
BOB: Black JD Gadilauskas,
BOS: Black JB Gadilauskas,
BOS: Black JB Gadilauskas,
Black : 9 JD Gadilauskas, Elizabeth

Brown/Gray 3 SD Brown, Kassie
Chocolate : 1 SD Moulder, Cody

DATE: 3/25/00
SHOW: Southside VA RB
WHERE: Chesterfield, VA
JUDGE: Linda Shuping
DUTCH: 21
BOB: Black SD Grisez, Ashley
BOS: Brown/Gray JB Grisez, Ashley
Black : 5 SD Grisez, Ashley
Blue : 3 JD Grisez, Ashley
Brown/Gray 2 JB Grisez, Ashley
Chocolate : 3 JD Grisez, Ashley
Steel : 1 JD Grisez, Ashley
Tort : 7 JD Grisez, Ashley

DATE: 3/25/00
SHOW: Kansas State Dutch Club
WHERE: Lawrence, KS
JUDGE: Eugene Johnston
DUTCH: 23
BOB: Black SD Stade, Caitlin
BOS: Blue JB Stade, Caitlin
Black : 6 SD Stade, Caitlin
Blue : 6 JB Stade, Caitlin
Brown/Gray 4 SB Stade, Brendan
Chocolate : 4 SD Stade, Brendan
Tort : 3 JD Stade, Caitlin

DATE: 3/25/00
SHOW: Diamond State RC
WHERE: Malvern, AR
JUDGE: Bill Fulkes
DUTCH: 9
BOB: Blue JD Non-Member
BOS: Black JB Non-Member
Black : 3 JB Non-Member
Blue : 3 JD Non-Member
Brown/Gray 1 SB Non-Member
Brown/Gray 1 SB Non-Member
Tort : 2 JD Non-Member

DATE: 3/25/00
SHOW: Diamond State RC
WHERE: Malvern, AR
JUDGE: WHERE: Malvern, AR

JUDGE: Jeff Albright
DUTCH: 9
BOB: Blue JB Non-Member
BOS: Blue JD Non-Member
Black : 3 JB Non-Member
Blue : 3 JB Non-Member
Brown/Gray 1
Elizabeth Brown/Gray Tort : 1
Tort : 2 JD Non-Member

DATE: 3/25/00
SHOW: Central NY RF
WHERE: Fulton, NY
JUDGE: David Cardinal

DUTCH: 28
BOB: Chocolate SB Graybeal, Zachary & Nathan
BOS: Steel JD Graybeal, Zachary & Nathan
Black : 9 SB Gadd, Chelsea
Blue : 2 SD Non-Member
Brown/Gray 3 SD Graybeal, Zachary & Nathan
Chocolate : 8 SB Graybeal, Zachary & Nathan
Steel : 3 JD Graybeal, Zachary & Nathan
Tort : 3 SD Non-Member

ADRC STANDING COMMITTEES

ELECTION COMMITTEE

Greg Gilbert, Bob McKenna, and Ricky Wood.

STANDARDS COMMITTEE -- for 2000-2005

Dick Evenburg/Kay Stearns, Tom Dietrich, Jill Dobson, Scott Williamson (one other member to be announced.)

DATE: 3/25/00
 SHOW: Capital City RC
 WHERE: Lawrence, KS
 JUDGE: Randy Dickerson
 DUTCH: 42
 BOB: Black JD Stade, Brendan
 BOS: Chocolate JB Stade, Brendan
 Black : 14 JD Stade, Brendan
 Blue : 8 SB Non-Member
 Brown/Gray 9 JB Powell, Natalie
 Chocolate : 5 JB Stade, Brendan
 Tort : 6 JD Stade, Cairdin

DATE: 3/26/00
 SHOW: Whiteside Co RC
 WHERE: Rock Falls, IL
 JUDGE: Walt Grebner
 DUTCH: 8
 BOB: Steel SD Non-Member
 BOS: Black SB Cochran, Kara
 Black : 2 SB Cochran, Kara
 Blue : 3 SB Non-Member
 Chocolate : 1
 Steel : 1 SD Non-Member
 Tort : 1 SB Non-Member

DATE: 3/26/00
 SHOW: Fayette Co RBA
 WHERE: Wilmington, OH
 JUDGE: Kevin Hooper
 DUTCH: 124
 BOB: Chocolate SD Kline,
 BOS: Blue SB Kline, Megan
 Black : 50 JB Weber, Brian
 Blue : 28 SB Kline, Megan
 Brown/Gray 10 SD Non-Member
 Chocolate : 19 SD Kline, Megan
 Steel : 5 SD Battson, Kristen
 Tort : 12 JD Lape, Cody & Danny

DATE: 4/1/00
 SHOW: Jackson Purchase
RBC-Show A
 WHERE: Hopkinsville, KY
 JUDGE: Ron Rohrig
 DUTCH: 20
 BOB: Black SD Lance, Gage
 BOS: Black SB Lance, Gage
 Black : 13 SD Lance, Gage
 Blue : 6 JD Gilpin, Diana
 Steel : 1 SD Gilpin, Diana

DATE: 4/1/00
 SHOW: Osceola 4-H SAA
 WHERE: Ewart, MI
 JUDGE: Brenda Dumas
 DUTCH: 26
 BOB: Black SB Moll, Greg
 BOS: Black JD Moll, Greg
 Black : 14 SB Moll, Greg
 Blue : 4 SB Moll, Greg
 Chocolate : 1 SD Non-Member
 Steel : 1
 Tort : 6 SD Non-Member

DATE: 4/1/00
 SHOW: Texas Panhandle
RBA-Show B
 WHERE: Pampa, TX
 JUDGE: Dickerson
 DUTCH: 6
 BOB: Black JD Bessent, Caity
 BOS: Blue SB Bessent, Caity
 Black : 5 JD Bessent, Caity
 Blue : 1 SB Bessent, Caity

DATE: 4/1/00
 SHOW: Texas Panhandle
RBA-Show A
 WHERE: Pampa, TX
 JUDGE: William Bryan
 DUTCH: 6
 BOB: Blue SB Bessent, Caity
 BOS: Black JD Bessent, Caity
 Black : 5 JD Bessent, Caity
 Blue : 1 SB Bessent, Caity

DATE: 4/1/00
 SHOW: Darke Co 4-H RR
 WHERE: Greenville, OH
 JUDGE: Kevin Hooper
 DUTCH: 37
 BOB: Chocolate SB Paul,
 BOS: Brown/Gray JD Non-Member
 Black : 9 SD Paul, Rachael
 Blue : 5 JD Non-Member
 Brown/Gray 4 JD Non-Member
 Chocolate : 9 SB Paul, Rachael
 Steel : 6 SD Battson, Kristen
 Tort : 4 JD Paul, Maddy

DATE: 4/1/00
 SHOW: Jackson Purchase
RBC-Show B
 WHERE: Hopkinsville, KY
 JUDGE: Brian Hartzell
 DUTCH: 20
 BOB: Black SD Gilpin, Diana
 BOS: Blue JB Gilpin, Diana
 Black : 13 SD Gilpin, Diana
 Blue : 6 JB Gilpin, Diana
 Steel : 1 SD Gilpin, Diana

DATE: 4/1/00
 SHOW: South Florida RBA
 WHERE: Tampa, FL
 JUDGE: Rusty Westhoff
 DUTCH: 12
 BOB: Brown/Gray JD Vernon,
 Chance
 BOS: Black JB Capshaw, Deke
 Black : 4 JB Capshaw, Deke
 Blue : 2 JD Vernon, Chance
 Brown/Gray 2 JD Vernon, Chance
 Steel : 1 JD Thompson,
 Tort : 3 JD Vernon, Chance

DATE: 4/1/00
 SHOW: Golden Prairie RBA
 WHERE: Lafayette, IN
 JUDGE: Gary Grimm
 DUTCH: 23
 BOB: Black SD Pearson, Anna
 BOS: Blue SB Non-Member
 Black : 7 SD Pearson, Anna
 Blue : 3 SB Non-Member
 Brown/Gray 4 JD Slack, Kelli
 Steel : 3 SB Non-Member
 Tort : 6 SB Slack, Kelli

DATE: 4/1/00
 SHOW: Hop To It Youth RC
 WHERE: Street, MD
 JUDGE: Gary Fellers
 DUTCH: 65
 BOB: Steel JD Jensen, Ashley
 BOS: Brown/Gray SB Non-Member
 Black : 13 SB Jensen, Ashley
 Blue : 9 SD Grisez, Ashley
 Brown/Gray 14 SD Graybeal,
 Zachary & Nathan
 Chocolate : 11 SD Graybeal,
 Zachary & Nathan
 Steel : 6 JD Jensen, Ashley
 Tort : 12 SD Wickerham, Janet

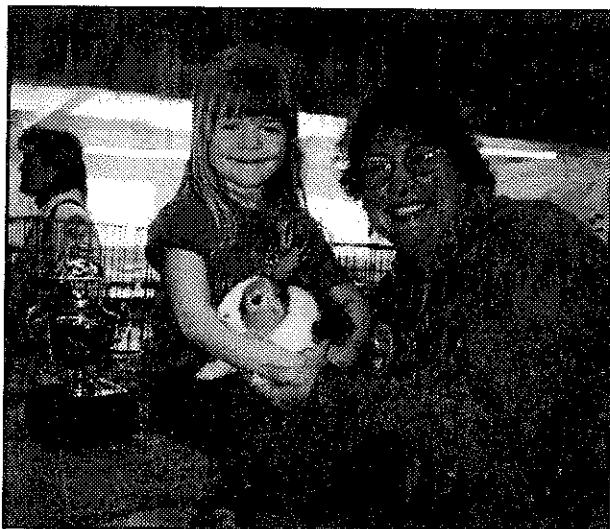
DATE: 4/1/00
 SHOW: San Antonio RBA
 WHERE: Killeen, TX
 JUDGE:
 DUTCH: 0
 BOB:
 BOS:

DATE: 4/1/00
 SHOW: Glenwood 4-H VYHB-Show
 WHERE: Stockton, CA
 JUDGE: Roger Wood
 DUTCH: 10
 BOB: Black SD Williamson, Beau
 BOS: Black SB Williamson, Beau
 Black : 6 SD Williamson, Beau
 Blue : 3 SB Non-Member
 Blue : 3 SB Non-Member
 Chocolate : 1 SD Non-Member

DATE: 4/1/00
 SHOW: Glenwood 4-H VYHB-Show
 WHERE: Stockton, CA
 JUDGE: Barbara Talley
 DUTCH: 18
 BOB: Black SD Mendonca, Amy
 BOS: Blue SB Mendonca, Amy
 Black : 8 SD Mendonca, Amy
 Blue : 6 SB Mendonca, Amy
 Brown/Gray 2 SD Mendonca, Amy
 Chocolate : 2 SD Non-Member

DATE: 4/1/00
 SHOW: Carroll Co Ohio RC
 WHERE: Carrollton, OH
 JUDGE: Al Butler
 DUTCH: 52
 BOB: Tort SD Saunier, Rachel & Daniel
 BOS: Blue SB Smith, Austin
 Black : 20 JD Bickelhaupt, Katie
 Blue : 8 SB Smith, Austin
 Brown/Gray 7 JD Bickelhaupt, Katie
 Chocolate : 11 SB Pawlak, Matt
 Steel : 1 SB Non-Member
 Tort : 5 SD Saunier, Rachel & Daniel

DATE: 4/2/00
 SHOW: Decatur Area RBA
 SHOW: Decatur Area RBA
 WHERE: Decatur, IL
 JUDGE: Marv Wunderlin
 DUTCH: 5
 BOB: Black JD Non-Member
 BOS: Black JB Non-Member
 Black : 4 JD Non-Member
 Chocolate : 1 SD Non-Member



Janet Wickerham & Jill Dobson

Harle Report:

Jill Dobson reports that about 20 AOV's were entered at the NDS. Nine breeders brought Harles, and her list of breeders is at about 40!

(Jilswlddudt@ccountry.net) or
 541-826-4408

DATE: 4/2/00
SHOW: Rochester RBA
WHERE: Rochester, NY
JUDGE: BH Patrick
DUTCH: 32
BOB: Blue SB Russ, Renee
BOS: Chocolate SD Russ,
Black: 17 JD Russ, Renee
Blue: 7 SB Russ, Renee
Chocolate: 5 SD Russ, Renee
Tort: 3 SD Non-Member

DATE: 4/2/00
SHOW: Bay State RBA
WHERE: Taunton, MA
JUDGE: Paul Jargelonis
DUTCH: 19
BOB: Blue SD Provost, Renee
BOS: Black SB Provost, Renee
Black: 7 SD Cristina, Johnathan
Blue: 6 SD Provost, Renee
Brown/Gray 1 JD Weber, Ken
Tort: 5 SB Blauss, Julie

DATE: 4/2/00
SHOW: South Jersey R&CF
WHERE: Egg Harbor, NJ
JUDGE: Peg Hailey
DUTCH: 13
BOB: Blue JB Non-Member
BOS: Blue SD Non-Member
Black: 3 SB Coe, Catherine
Blue: 4 JB Non-Member
Brown/Gray 2 SD Coe, Catherine
Tort: 4 JB Coe, Catherine

DATE: 4/8/00
SHOW: Stephen's Co RBA-Show A
WHERE: Duncan, OK
JUDGE: Janie Crawford
DUTCH: 16
BOB: Black SB Bessent, Caity
BOS: Brown/Gray SD Powell,
Natalie
Black: 7 SB Bessent, Caity
Blue: 3 SB Bessent, Caity
Brown/Gray 4 SD Powell, Natalie
Tort: 2 JD Non-Member

DATE: 4/8/00
SHOW: Cal State R&CBA-Show A
WHERE: Tulare, CA
JUDGE: Manuel Hidalgo
DUTCH: 15
BOB: Black JD Non-Member
BOS: Black SB Non-Member
Black: 9 JD Non-Member
Blue: 3 SD Non-Member
Brown/Gray 2 SB Non-Member
Chocolate: 1 SB Non-Member

DATE: 4/8/00
SHOW: Stephens Co RBA
WHERE: Duncan, OK
JUDGE: Cristi Reeder
DUTCH: 16
BOB: Blue SB Bessent, Caity
BOS: Black SD Bessent, Caity
Black: 7 SD Bessent, Caity
Blue: 3 SB Bessent, Caity
Brown/Gray 4 SB Powell, Natalie
Tort: 2 JD Non-Member

DATE: 4/9/00
SHOW: Cal State R&CBA-Show B
WHERE: Tulare, CA
JUDGE: Chris Zenny
DUTCH: 13
BOB: Chocolate SB
BOS: Blue SD Non-Member
Black: 7 JB Non-Member
Blue: 3 SD Non-Member
Brown/Gray 2 SB Non-Member
Chocolate: 1 SB Non-Member

DATE: 4/9/00
SHOW: New England Show Circuit
WHERE: Devens, MA
JUDGE: Alan Platt
DUTCH: 20
BOB: Blue JD Provost, Renee
BOS: Tort SB Ardison, Staci
Black: 8 SD Cristina, Johnathan
Blue: 5 JD Provost, Renee
Tort: 7 SD Ardison, Staci

DATE: 4/9/00
SHOW: Springfield RBC
WHERE: Springfield, IL
JUDGE: Walt Grebner
DUTCH: 12
BOB: Blue JB Craig, Andrew
BOS: Blue SD Non-Member
Black: 5 SB Craig, Andrew
Blue: 3 JB Craig, Andrew
Brown/Gray 1 SB Hulva, Daniel
Chocolate: 1 SB Hulva, Daniel
Steel: 1
Tort: 1 SB Hulva, Daniel

DATE: 4/15/00
SHOW: Manitoba RF
WHERE: Winnipeg, MB Canada
JUDGE: Rich Steinberg
DUTCH: 9
BOB: Black SB Non-Member
BOS: Black JD Non-Member
Black: 3 SB Non-Member
Blue: 2 SD Non-Member
Chocolate: 3 JD Non-Member
Tort: 1 SD Non-Member

DATE: 4/15/00
SHOW: Manitoba RF
WHERE: Winnipeg, MB, Canada
JUDGE: Erik Bengtson
DUTCH: 9
BOB: Black JD Non-Member
BOS: Blue SB Cossette, Kaleb
Black: 3 JD Non-Member
Blue: 2 SB Cossette, Kaleb
Chocolate: 3 JD Non-Member
Tort: 1 SD Non-Member

DATE: 4/16/00
SHOW: NY Convention Show
WHERE: Fulton, NY
JUDGE: Bonnie Burdick
DUTCH: 11
BOB: Blue SB Non-Member
BOS: Chocolate SD
Black: 3 JB Non-Member
Blue: 2 SB Non-Member
Chocolate: 3 SB Non-Member
Tort: 3 SD Non-Member

DATE: 4/16/00
SHOW: Portsmouth RBA
WHERE: Lucasville, OH
JUDGE: Harry Rice
DUTCH: 37
BOB: Black JD Non-Member
BOS: Black SB Non-Member
Black: 15 JD Non-Member
Blue: 10 SB Non-Member
Brown/Gray 1 SB Non-Member
Chocolate: 5 SB Non-Member
Steel: 1 JB Non-Member
Tort: 5 SB Non-Member

DATE: 4/16/00
SHOW: Cedar Rapids RBA
WHERE: Cedar Rapids, IA
JUDGE: Mary Wunderlin
DUTCH: 13
BOB: Brown/Gray SB
Non-Member
BOS: Black SD Kelly, Autumn
Black: 6 SD Kelly, Autumn
Blue: 1 SD Non-Member
Brown/Gray 2 SB Non-Member
Chocolate: 2 SB Non-Member
Tort: 2 SB Non-Member

DATE: 4/16/00
SHOW: Portsmouth RBA
WHERE: Lucasville, OH
JUDGE: Terry Fender
DUTCH: 36
BOB: Tort JD Saunier, Rachel &
Daniel
BOS: Black SB Non-Member
Black: 14 SB Non-Member
Blue: 10 JD Non-Member
Brown/Gray 1 SB Non-Member
Brown/Gray 1 SB Non-Member
Chocolate: 5 SB Non-Member
Steel: 1 JB Non-Member
Tort: 5 JD Saunier, Rachel &
Daniel

DATE: 4/22/00
SHOW: Indiana State RBA
WHERE: Lafayette, IN
JUDGE: George Raisor
DUTCH: 19
BOB: Black SD Pearson, Anna
BOS: Blue SB Non-Member
Black: 3 SD Pearson, Anna
Blue: 2 SB Non-Member
Brown/Gray 5 SB Berger, Drew
Chocolate: 3 SB Berger, Drew
Steel: 4 SB Berger, Drew
Tort: 2 SB Berger, Drew

BERGENE RABBITRY

QUALITY DUTCH



30165 West 154th Street
Gardner, KS 66030

(913) 884-2131
bergen@planetkc.com

Also:

Palominos
Holland Lops
New Zealand Whites
Cinnamons

12/01



**AMERICAN DUTCH RABBIT CLUB
HALL OF FAME**

Inducted at Greenville, Ohio 1996 NDS

Al Butler Jack Wireman Norma Hart
 Barb Butler Anthony Micallef Stan Goegelein
 Bill Geitzenauer George Parmer Jack Pugh
 Anthony Micallef

Inducted at Greenville, Ohio 1997 NDS

Andy Barton Roger Eich

Inducted at Hutchinson, Kansas 1998 NDS

Doreen Bengtson Wenton Carlton
 Larry Bengtson Wayne MacKinnon

Inducted at Oshkosh, Wisconsin 1999 NDS

Roger Guetschow Lynn Shaw

Inducted at York, Pennsylvania 2000 NDS

Alan Miller Mike Stinehelfer

DR ADS EXPIRING

Roger Eich, Carol Dangler, Mixdorf's,
 Caldwell/Lybarger Rabbits

Help out the Dutch Club with your renewal.

**THANKS FOR THE NEW ADS AND
RENEWALS FOR THIS ISSUE**

Bob Bergene, TW Wise Rabbitry, Jack/Ruth
 Wireman, Kansas Dutch Rabbit Club, Marty
 Preede, Bengtson's Dutch, Tony Micallef

**Next DR Deadline
Aug. 10**

ADRC Show Sanction: Date of Show _____ Open ARBA Code# _____ Youth ARBA Code # _____

Sponsoring Club _____ Show location _____ Secretary Name _____ Ph# _____

Address _____ City _____ State _____ Zip _____ Sanction Fees: Open \$9 Youth \$6. *Apply at least 60 days in advance.* Send to Doreen Bengtson, Sect. Rt 1 Box 95 Lewiston, MN 55952-9720.

MEMBERSHIP APPLICATION

AMERICAN DUTCH RABBIT CLUB

Send to: Doreen Bengtson, Sect.

Route 1 Box 95
 Lewiston, MN 55952
 (507)864-2103

YEARLY DUES

Youth \$8.00 Single \$10 Husband/Wife \$14 Family \$20

Date _____ 19 _____

I hereby make application for membership in the **AMERICAN DUTCH RABBIT CLUB**. I agree to abide by your Constitution and By-Laws and to further the interest of the AMERICAN DUTCH RABBIT in every way possible.

Print Name _____

Youth name(s) for family membership _____

Street Address _____

City _____ State _____ Zip _____ Phone() _____ - _____

Renewal New Recommended by _____

Canadian memberships must add an additional \$5 to cover mailing expenses. **Foreign memberships** must add an additional \$8 to cover mailing expenses. All fees must be in U.S. funds. If you want your Dutch Reporter send to you 1st class, please add \$7.



BENGTSON'S DUTCH

Larry, Doreen, Erik & Paul



3/02



Route 1 Box 95
Lewiston, MN 55952
(507)864-2103

12/01

PETERS' RABBITS



Black, Blue & Chocolate

Penn & Sue Peters
129 Apple Meadow Lane (304)291-0111
Morgantown, WV 26508

PENNSUE2@aol.com

Get your inside covers ad today!
Two years for \$60.

JILL'S WILD DUTCH BUNCH



Since
1975

Pedigreed Registered
Black Tortoise Harlequin
JILL E. DOBSON
1299 Barton Rd.
Eagle Point, OR 97524
(541)826-4408 email: Jilswlddut@ccountry.net

12/01

W enton C arlton

14150 N Hawkeye Drive
Tucson, Arizona 85741



9/01

Dutch Haven Rabbitry "We strive for Excellence"

Sue & Emily Strandwitz
Neenah, Wisconsin
(920)729-9577

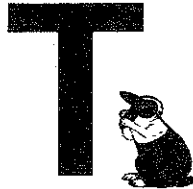
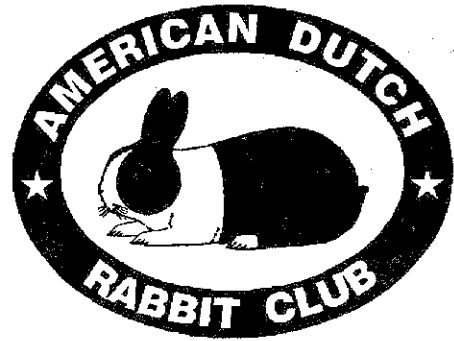


Dutchin
Black Blue
Chocolate Tortoise

12/00

THE DUTCH REPORTER
Julia Anderson, Editor
N7558 Boulder Drive
Portage, Wisconsin 53901

BULK RATE
U.S. Postage
PAID
PERMIT # 211
Winona, MN



SEND TO:



DATED MATERIAL