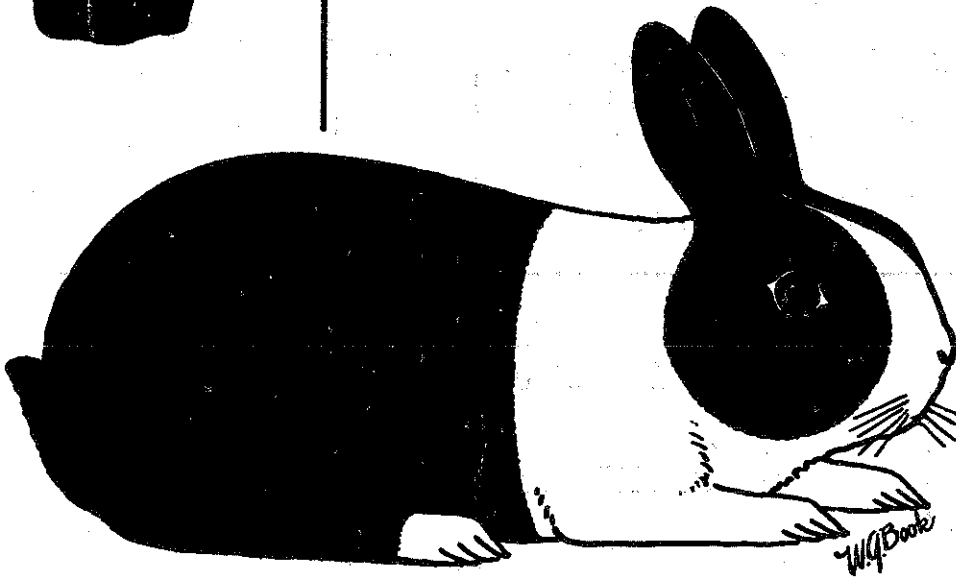




The Dutch Reporter



DEVOTED TO THE INTERESTS OF THE
BREEDERS OF DUTCH,

America's Finest Rabbit



American Dutch Rabbit Club

Aug 63

OSMON'S
RABBITRY

BLACK - BLUE - TORTOISE

D U T C H

11817 So. HARDING,
CHICAGO 55, ILLINOIS

7-63

A. R. B. A. RABBIT and CAVY JUDGE

"Don" REID
Route # 1,
Lockport, Illinois
Phone: HUXley 5-3137

DUTCH - Black - Blue
FLEMISH - Sandy - White
NEW ZEALANDS - Reds
CAVIES (American) - All Colors

3-64

BILL SUMMERS
BLACK DUTCH BLUE

BEST BLUE NAT'L DUTCH SHOW 1961, COLO. SPRINGS, COLO.
BEST BLUE NAT'L CONVENTION 1961, LOUISVILLE, KY.
BEST BLUE NAT'L CONVENTION 1962, TAMPA, FLA.

Colorado Springs, Colorado

502 Sevilla Drive,

Phone: EX-27678

12-63

JESS WILLIAMS

BLUE, BLACK
TORTOISE & CHOCOLATE

D U T C H

2801 West Lincoln
Phoenix 9 Arizona

3-64

BEAUFORD
CAUTHORN'S RABBITRY

BLACK CHOCOLATE
TORTOISE BLUE
GRAY STEEL

Route 12 - Box 569
Oklahoma City 15, Okla.

Bernie

Joyce

8-63

HADAWAY'S DUTCH

BLACK - BLUE - CHOCOLATE - TORTOISE

From a show winning herd
Junior, Senior stock for sale -- priced right

CARROLL HADAWAY

510 Cannon St., Chestertown, Maryland

11-63

BLACK DUTCH

JACK BOUGHTON
9961 Mayfield Rd.,

Chesterland, Ohio
Phone 286-3837

only a few -- but some of the best

6-63

BLACK BLUE
TORTOISE

BREEDING DUTCH
SINCE 1899

STOCK FOR SALE
MOST ALL TIMES

Chas. Williams
402 Delaware Road,
Kenmore, New York

6-63

Edout

The Dutch Reporter

Devoted to the interests of the breeders of Dutch, America's Finest Rabbit
American Dutch Rabbit Club

August 1963

SECRETARY'S CHIT-CHAT

by J. Weinhardt

This is the period of the year when activity in the rabbit clubs seems to be at their lowest ebb. Many local clubs cancel their meetings for July and August or else they hold gettogethers just for fun with a big picnic dinner as the point of greatest interest. In most parts of the country shows are at a minimum and those that are held have very small entries of mostly junior stock due to the extreme heat. Everyone is looking over their litters and preparing their entries for the fair shows which really get to rolling during the last two weeks in August. Although the Dutch entries seem to be down considerably in most of the early spring and summer shows this year, it is my feeling that the late summer and fall shows will show a big increase, due principally to the growing interest of new breeders in Dutch Rabbits. Letters from such new comers in search of good stock from reliable breeders make up quite a portion of my weekly mail. I do my best to recommend breeders within driving distance of these potential buyers homes, but often am handicapped by my spotty knowledge of geography in various parts of the country, especially the location of some of the small towns that I've never even heard of. Sometimes it is even impossible to locate these towns on a road map, but I do the very best I can. I always send any such person a copy of the current issue of the Dutch Reporter, so if YOU have an ad and the person writing in lives near you, it just might sell some of that extra stock for you.

Along with queries for sources of stock from persons who are already members of the ADRC there are often requests or suggestions of topics they would like to see discussed on the pages of the Dutch Reporters. Many months ago we had such a request for an article on the breeding of good chocolates -- to date no such article has been forthcoming. During the past few weeks there has been another on the same subject, and I quote: "I would like to raise some Chocolate Dutch but the only breeder around here who raises chocolates, is having trouble with long racy type and very long ears." Isn't there one among you who has had good success with Chocolates, who could write something for the newer breeder on the solution to such a problem?

Interest seems to be growing in the fine art of producing good Tortoise, Steel and Gray Dutch, but requests for native experiences with these varieties (other than Tort-

OFFICERS

President: George Bayliss; P. O. Box 504, Hayward, California
 Vice-President: Melvin C. Emery; R# 3 - Box 133C, Elyria, Ohio
 Publicity Director: Mrs. Tom Shufflebotham; Box 257, Valparaiso, Indiana

BOARD OF DIRECTORS

Tom Shufflebotham; Valparaiso, Indiana-----Don Reid; Lockport, Illinois
 William C. Stedman; Newfane, New York-----Bill Summers; Colorado Springs, Colo.
 Roger Eich; Templeton, Iowa-----E. R. Parks; Glendale, Arizona

EDITOR & SEC'Y.-TREAS.—Mrs. W. A. Weinhardt, 17990 Bethel Church Rd., R #3, Manchester, Michigan

Opinions expressed in articles and letters published in the Dutch Reporter do not necessarily represent those of the American Dutch Rabbit Club, the Editor or the Publisher.

The date your membership expires is shown on the address label of your Dutch Reporter. Dues \$3.00 per year. NOTE: Our Club is affiliated with the American Rabbit Breeders Association, Inc., and by sending \$6.76 instead of \$3.00, you will become a member of both Associations.

All material for the Dutch Reporter must be in the hands of the Editor by the 15th of the month preceding issue.

Please notify us immediately of any change in address so that you will not miss copies of the Dutch Reporter

oise) have fallen on deaf ears. Another breeder I am quoting, puts it this way: "I have found that securing proper color in Tortoise is in itself a task, although the article by Mr. Shufflebotham in the August '62 issue of the Dutch Reporter was very helpful. My main complaint about Tortoise is that when starting out you must either begin with a trio of long racy typed animals or pay out a young FORTUNE for a start."

With these requests, and others, and no material forthcoming from amongst our membership, I am forced again to turn to our brother breeders over the sea and to old issues of the Dutch Reporter for items that I feel might be of interest to all. Those of you who do not care for such "warmed over" material will just have to bear with us until you decide to get off your hands and take up a pen and furnish us with something "fresh".

YOU CAN'T BEAT THE DUTCH

HOW TO BREED STEEL GRAYS

by J. W. Vickers

(The following article is copied from the Year Book of the United Kingdom Dutch Rabbit Club for 1946 and supplied me by our good friend, Chas. O. Lewis. JW)

Is steel breeding such a difficult proposition for the budding Dutch Fancier to tackle, as it is generally supposed to be?

The idea no doubt arises from the fact that several colours and shades are used in the breeding, to try to attain and keep the desired colour, required and set out in the standard of the Dutch Rabbit Club.

This should not stop any Novice Fancier from taking up this most fascinating colour. The beginner should know what colour his stock are bred from, but if he is in doubt he should place himself in the hands of one of many old steel club members. There are many who will only be too willing to help the Novice into the ranks of Steel breeding, and it is with this idea that I will try and explain the colours used in the breeding of Steel Grays.

I have numbered my notes on colours as follows:--

(1) The Standard Steel. Just imagine a rabbit with gray base colour and an upper, sparkling, pin-pointed, even ticking from ear tips and all over the body. Showing a steely blue tint of medium to dark colour, and here you have the ideal Steel that may be mated to most colours and give you a good percentage of steels.

(2) The Dark Steel. This is a good rabbit for exhibition, if the ticking shows up on its dark ground base colour. It is very useful mating to No. 1, especially the medium colour if ticking is in evidence. Can be used in most other colours with good assurance of success.

(3) Black (Steel Bred). Many of our present-day winning blacks are Steel Bred, and providing they are free from any white hairs on ears and body, they can hold their own in the Show Pen. But they can do a great amount of harm if used for any other colour but Steel, and I consider this colour very useful for steel mating. Can be mated to any shade that excels in ticking.

(4) The Pale or Light Gray. This colour is not a popular rabbit from an exhibition point of view. Judges don't seem to like it, as with its lack of belly colour it's undercut is difficult to define. If its ticking is pin-pointed then it is a most useful rabbit to mate to Dark Steel or Black Steel bred, and will often give a successful result.

(5) Blue or Blue Gray (Steel Bred). A most useful rabbit in experienced hands. Should never be used in Black or Blue breeding. If it has hazel coloured eyes so much the better and can be used to advantage to mate with No. 1, 2 or 3 to improve the shadings of ticking. There is always a risk in using blue of getting discoloured eyes, and any having this fault should be destroyed. If this fault is bred into any stud it will take some time to remove.

(6) The Brown Gray. This colour is becoming a favourite with many Fanciers and I have a failing for it myself. It is a lovely exhibition rabbit and its colour wears well, as its good straw-coloured belly makes its undercut easy to define. Browns should never be used in Steel Gray breeding, but should be kept and bred as a separate stud, using Blacks as bred from Brown Grays for the accessory colour.

There appears to be very few ideal Steels being shown today. Many are too dark in colour and lack that bluey steel ticking chiefly on ears and spine. Others show too much Brown in the coat, probably due to the result of using the Brown Gray. There is plenty of room for the Novice to step in and try to improve on this colour. If he has success in his breeding and produces a good coloured Steel Gray he will have a rabbit that he will be proud to exhibit, and many will be the tempting offers he will have to refuse if he wants to keep it.

I have tried to make these notes clear to the Novice and hope they may prove helpful to him and give him as much enjoyment in trying to produce the Ideal Steel as I have had in my 50 years as a Dutch Breeder.

YOU CAN'T BEAT THE DUTCH

THE GENETICAL MAKE-UP OF DUTCH MARKINGS.

by W. King Wilson

(This article first appeared in the United Kingdom Dutch Rabbit Club Year Book for 1951. JW.)

The breeding of Dutch rabbits is fascinating but it is also baffling. It is hard enough to breed good ones, but why is it that when a good one turns up it is not followed by a series of really good ones? Well, some strains do turn out quite a flow of nice ones, but there are usually such a lot of wrong ones that Dutch does are often let off with rearing half or quarter sized litters. It is only when a breeder keeps records of the fate of ALL the young born that he realises what a small proportion of good ones there are.

Anyone who has done much Dutch breeding will know that the amount of coloured coat varies from good show Dutch in BOTH directions; There are the heavily marked "deep", or dark Dutch, right up to the animal that hardly has any white except on the tip of the nose and on the front toes. There have, in fact, been some without any white, so they were selfs.

In the other direction you may find they have less and less colour. When the colour is reduced very much it breaks up into patches behind the saddle and becomes spotted. The amount of colouring can be further reduced until there is practically none, except round the eyes and tail (as in the French breed of Hotot), these are the "whites". The eyes are coloured but wall and spec eyes are frequently associated with the spotted and white marked ones. Reduction of the pigmented coat marking also seems to reduce the colour in the iris of the eyes.

Although most Dutch can be roughly grouped into these four or five grades: Dark, show, spotted, and white, there are in fact all degrees of GRADUATION, rather than any sharp dividing line between these groups. Furthermore, a rabbit is more often than not different when viewed from the opposite side. Therefore, if you try to keep charts of the markings you need a vast number, running into hundreds, if you are to chart them accurately. On the other hand it is simpler and more workable to grade your stock into the foregoing ROUGH grades.

Leading scientists since Hurst's early work, included Professors Castle, Punnett and Nachtsheim, also Pease and others, have tried to work to a graded series of markings. But even the leading geneticists of Western Universities disagreed on the interpretation of the breeding results.

The American theory is the simpler, in as much as it is based on the theory that dark or heavily marked Dutch, du^d is dominant, and lightly marked, du^w is recessive, and that reasonably well marked Dutch, including show animals, are the impure form $du^d du^w$ which comes in between the dark and the lightly marked extremes. (If breeders have FULL records from crossing these two sorts of mismarked together, it ought to make interesting reading--K.W.)

It should be explained here that the scientists include in their typical Dutch group many mismarked animals, such as one finds owners using in the breeding pen.

The British theory is much more complicated and goes into three, or possibly four, different pairs of alternative factors (N, P, T, S) are stipulated to explain the different degrees of coloured coat. N being the self, P the major factor for pattern, T and S being as it were, intermediate and spotted and somewhat less powerful in det-

erming markings. (Or possibly it could be reduced to dark P.P., light p.p, and "good" Dutch P,p?) A double dose of a factor increases the amount of markings over a simple dose. In this scheme the show Dutch might be of two or more different sorts of make-up, but NOT true breeding unless the eyes are unsound. The lightly marked, however, breed true within themselves.

Therefore you are not likely to breed good ones by breeding lightly marked or spotted ones together. But, if your breeding records show that about a quarter of all the young born are light, and another quarter are heavily marked you may tire of this WASTAGE IN CULLING HALF OF THE YOUNG. In that case you could try out the cross between the spotted and the heavily marked. But please be sure to record ALL the young that are born. You need not fear a glut of winners. There will still be plenty to use as fosters. Be sure to breed from a strain that produces winners. Then see which system produces the FEWEST WASTERS.

Conclusion:-- These notes are intended for experienced Dutchmen. They are NOT meant for the guidance of beginners. These notes only touch on the markings, we had better leave out the problems of colour and type for this time.

YOU CAN'T BEAT THE DUTCH

DUTCH PEDIGREES

by Earl D. Hord

(The following article first appeared in the Dutch Reporter for October, 1953. JW)

It has been called to the attention of this breeder that many of the Dutch breeders are getting lax in filling out the pedigrees on the stock they sell. This I am very sorry to hear, as the pedigree can be important as type and color in making your matings in Dutch. The most common complaint is there are no colors on the pedigrees and then next, there are no weights represented on the pedigree. I am sure that there are no breeders of good Dutch that are ashamed he has some colors on the pedigree other than the color of the rabbit on the pedigree. That would be the only reason I can think of why he wouldn't want the colors on the pedigree from the shady standpoint. The other reason why they aren't there is just plain laxness in putting them on. Some may say that there is no space for color on the pedigree he is using. There may not be a designated space, but I am sure there are plenty of spaces where these colors could be written, even on the back.

As to weight on the pedigree of the rabbit, this is and should be necessary. We are breeding for an ideal weight as well as markings, type and color. Therefore, a man who has a nice animal wishes to know if the weight on this particular animal is running true to the background. If the parents were on the large side, he could be sure that the rabbit is carrying some genes for larger size as well as some for smaller and for the ideal, if it were ideal. With this information, the breeder could control the size of the offspring better by making matings to suit his needs at the time.

As a registrar, I am loathe to send in a registration on a good animal without all the information called for. I have to do it, as the pedigree presented to me is all I have. Perhaps if we all took a good look at our pedigrees and brought them all up to date, we could have something we could be proud of.

Just one more gripe that I am hearing a lot these days. This gripe is pointed particularly to Dutch Breeders. That is the gripe about not answering mail for breeding stock when you have an ad in a magazine or some other organ of advertising. One lady from California told me that out of six breeder she had written to in less than two months she had received a reply from only one. It happened to be myself that replied. Even though I did not have what she was wanting, the nice letter I received from her on the way mail was answered was sufficient to make me happy.

I know that there are many who also have good stock for sale, so please let the new breeders know who you are and where you are as the demand for breeding stock is really good now. There are many people going into Dutch now. There are several reasons for this. Maybe one of them is that Dutch are, to quote our Secretary, "Just as tough as pine knots". Remember, you can't beat the Dutch; let's not have it said you can beat the Dutch Breeders. So, fill in the pedigrees with all the information you have, and soon the succeeding generations will take care of a full pedigree;

weight is still important, too; and answer the requests for breeding stock; show Dutch; talk Dutch and above all, BREED DUTCH.

YOU CAN'T BEAT THE DUTCH

SANCTIONED SHOWS

- July 21; Cuyahoga R&CBA; Sec'y, Al Meier, Jr.; 14728 Ridge Rd., N. Royalton, Ohio.
- Aug. 4; Lakehead RPA at Proctor Frgrds. (Livestock Bldg.), Duluth, Minn.; Sec'y, Mrs. Anna Mae Viergutz; R# 6 - Box 295, Ryan Rd., Duluth, Minn.
- Aug. 5-11; Mower & Midwest Cty. Fair at Austin, Minn.; Sec'y, E. M. Nelson; 504 - 10 Ave. NW, Austin, Minn.
- Aug. 8-14; Ozark Empire Fair with Springfield RBA; Sec'y, Edna Robb; 3034 W. State, Springfield, Mo.
- Aug. 9-18; Indiana State Fair; Sec'y, Florence K. Ayers, 2912 Hoover Ave., Springfield Illinois.
- Aug. 11-12; All-Iowa Fair with Cedar Rapids SSA; Sec'y, Mrs. Ethel Becicka; 5000 J St, SW, Cedar Rapids, Iowa.
- Aug. 12-17; Muskingham Cty. Fair; Sec'y, Herb R. Anthony; 254 S. 6th. St., Newark, Ohio
- Aug. 12-17; Morrow RR, Fair show; Sec'y, Mrs. Shirley Brady; R# 2, Mt. Gilead, Ohio.
- Aug. 8-18; Wis. State Fair at West Allis; Sec'y, Walter R. Cook; 4910 So. 43rd. St., Milwaukee 20, Wis.
- Aug. 14-21; Black Hills Range Days; Sec'y, Henry C. Blom; R# 2 - Box 198, Rapid City, South Dakota.
- Aug. 17-18; Mid State Fair at Gardner, Mass; with Mohawk RBA; Sec'y, John O. Rod; Box 87, Tempelton, Mass.
- Aug. 17-23; Lima R&CBA, Inc. with Allen Cty. Fair; Sec'y, Dale Place; R# 3, Wapakoneta, Ohio.
- Aug. 17-24; Lake Cty. Central States Fair with Calumet RBA; Sec'y, Jackie Lucas; Portage, Indiana.
- Aug. 18; Akron RC; Sec'y, Alex Ballash; 1075 Prospect St., Barberton, Ohio.
- Aug. 18-24; Montgomery Cty. Fair at Gaithersburg, Md.; Sec'y, Margaret V. Curtis; 401 E. Jefferson St., Falls Church, Va.
- Aug. 18-24; Tri-Cty. RC with Marshfield Fair at Marshfield, Mass.; Sec'y, Alton P. Chandler; Tarklin Rd., Kingston, Mass.
- Aug. 19-24; State Fair of W. Va. at Lewisburg; C. T. Sydenstricker, Sec'y-Mgr., Lewisburg, W. Va.
- Aug. 19-24; Calhoun Cty. Fair at Marshall, Mich.; Sec'y, Dean Daglow; 213 E. Leigh St, Homer, Mich.
- Aug. 21-25; Iowa State Fair at Des Moines; Sec'y, Mrs. Hollis Scott; Elkhart, Iowa
- Aug. 23-Sept. 2; Ohio State Fair at Columbus; H. W. Lucks, Sup't Rabbit Show; 7559 Cherry Brook Dr., Reynoldsburg, Ohio.
- Aug. 24-29; Paulding Fair at Paulding, Ohio; Sec'y, Marjorie Chester; R# 1, Payne, Ohio.
- Aug. 24-Sept. 2; Long Island Fair with Long Island RBA; Sec'y, Howard Bartow; 38 Sherman St., Merrick, L.I., N. Y.
- Aug. 25-31; Colo. State Fair at Pueblo; Jack Vaughn, Sup't Rabbit Dep't., 2416 Rice St., Pueblo, Colo.
- Aug. 26-31; Ft. LeBoeuf R&CBC with Wattsburg Fair; Sec'y, Clifford Ramey; P. O. Box 173, Wesleyville, Pa.
- Aug. 27-Sept. 1; Traverse City Fair with Cherryland RBA; Sec'y, Mrs. Irma Schwartz; R# 2 - Box 120, Cedar, Mich.
- Aug. 28-Sept. 2; P & O R&FFA, Inc. at Canfield, Fair, Canfield, Ohio; Sec'y, Mrs. Mabel Brucker; R# 2 - Box 251, W. Middlesex, Pa.
- Aug. 27-Sept. 1; Snohomish Cty. Evergreen Fair with Northwest RBA at Monroe, Wash.; Sec'y, John Stokes; 1305 - 5th. Ave. S, Edmonds, Wash.
- Aug. 30-Sept. 6; Van Wert Cty. Fair with Van Wert Cty. RBA; Sec'y, William G. Smith; 602 So. Walnut St., Van Wert, Ohio
- Aug. 31-Sept. 4; Montgomery Cty. Fair; Goldie V. Scheible, Sec'y-Mgr.; P. O. Box 6066, Dayton 9, Ohio

Sept. 1; Clarinda RBA at Clarinda, Iowa; Sec'y, Mrs. Dorothy Walter, Nodaway, Iowa
Sept. 6-8; Ill. State Conv. Show at Springfield, Ill; Sec'y, Bernise A. Bloomquist;
Box 8, Sherrard, Illinois.
Sept. 7-8; Litchfield Cty. R&CBA; Sec'y, George L. Smith; Maple Farm, Thomaston, Conn
Sept. 11-14; Saline Comm. Fair with Ann Arbor RBA; Sec'y, Mrs. Doris Miskovic; 345 W.
Delhi Rd., Ann Arbor, Mich.
Sept. 11-15; Inland Empire RBA with Spokane Interstate Fair; Sec'y, Aletha Macomber;
E. 1717 LaCrosse, Spokane 27, Wash.
Sept. 12-22; New Mexico State Fair at Albuquerque; Chloe Baker, Adm. Ass't.; P. O.
Box 8546, Albuquerque, N. M.
Sept. 13-14; Gloucester Cty. Fair, Gloucester, Va. with Ass'n. of Va. RBA; Sec'y,
Charles L. Bull; 138 Shoe Lane, Newport News, Va.
Sept. 13-17; Los Angeles Cty. Fair at Pomona; Gladys M. Donlavy, Ass't. Sec'y; Los
Angeles Cty. Fair Ass'n., Pomona, Calif.
Sept. 14-15; Terryville Fair with Cen. Conn. R&CBA; Sec'y, Harry Anthony, Jr.; 120
Miller Ave., Meriden, Conn.
Sept. 14-15; E. Wis. R&CBA State Conv. Show at Sheboygan; Sec'y, Richard D. Maas;
1315 Georgia Ave., Sheboygan, Wis.
Sept. 14-15; Texas Panhandle RBA at Tri State Frgrds.; Sec'y, Jimmy Grantham; 1004
Louisiana, Amarillo, Texas.
Sept. 14-19; Kansas State Fair; H. W. Janzen, Sup't.; 1514 E. 23d. St., Hutchinson,
Kansas.
Sept. 15; Soo Valley RBA at Sioux Falls, S. D.; Sec'y, Wayne Carlson; 705 N. Walts;
Sioux Falls, S. D.
Sept. 15; Erie RC in Erie, Pa.; Sec'y, Clifford Ramey; P. O. Box 173, Wesleyville, Pa
Sept. 21-22; Columbus RBA; at Columbus, Ohio; Sec'y, G. A. Burke; 6400 Scioto Darby
Creek Rd., Hilliard, Ohio
Sept. 22; Tri-State R&CBA, Inc. at Mahoning Cty. Frgrds., Canfield, Ohio; Sec'y, Mabel
Brucker; R# 2 - Box 251, W. Middlesex, Pa.
Aug. 23-24; York Cty. RBA of Maine with Acton Farmer Fair at Acton, Maine; Sec'y,
Charles D. Fink; Old South Rd., South Berwick, Maine.
Sept. 20-22; Indiana State RBA Annual State Show at Tippecanoe Cty. Frgrds, Lafayette,
Ind.; Sec'y, George Synesael; 1011 S. 4th., Lafayette, Indiana
Sept. 23-29; Kern Cty. RBA with Kern Cty. Fair; Sec'h, Alma Cremer; 9704 Enger St.,
Bakersfield, Calif.
Sept. 28-Oct. 5th.; Pecos Valley RBA with Eastern New Mexico State Fair at Roswell;
Sec'y, Gail M. Warrington; 2325 N. Mesa Ave., Roswell, N. M.
Oct. 19-20; Lorain Cty. R&CBA, Inc. at Lorain Cty. Frgrds., Wellington, Ohio; Sec'y,
Mrs. Mike Honoshofsky; R# 2, W. Ridge Rd., Elyria, Ohio
Nov. 17; Iowa Progressive RC at Harper, Iowa; Sec'y, C. Jay Miller; 303 S. 6th. St.,
Kalona, Iowa

YOU CAN'T BEAT THE DUTCH

LONG ISLAND RABBIT BREEDERS ASS'N.

Commack, New York (2-125) May 26, 1963 Judge: John Wolos
TOTAL DUTCH (62) BLACK DUTCH (23) Best Black, BEST DUTCH, Jr. Doe, Christine V. Hall.
Best Opposite Black, BEST OPPOSITE DUTCH, Sr. Buck, Cranston Hgts. Rbtry. Exhibi-
tors of Blacks, Cranston Hgts, Cedar Rail Rbtry, John Hauser, Harold Mills, Carroll
Hadaway, Rickmer's Rbtry, Hall.
BLUE DUTCH (19) Best Blue, Sr. Buck, Hadaway. Best Opposite Blue, Jr. Doe, Cranston
Hgts. Exhibitors of Blues, Hadaway, Cranston Hgts, Rickmers, Howard Bartow, Hauser,
Willow Ranch.
CHOCOLATE DUTCH (10) Best Chocolate, Sr. Buck, Rickmers, Best Opposite Chocolate, Jr
Doe, Hadaway. Exhibitors of Chocolates, Rickmers, Willow, Hadaway, Walter Meyer.
TORTOISE DUTCH (10) Best Tortoise, Sr. Doe, Hadaway. Best Opposite Tortoise, Sr. Buck
Mills. Exhibitors of Tortoise, Mills, Hadaway, Marker's Rbtry.
SWEEPSTAKE POINTS: Cranston Hgts. Rbtry. 217. Carroll Hadaway 141. Rickmer's Rbtry.
132. Cedar Rail Rbtry. 111. Harold Mills 86. Howard Bartow 33. Christine Hall 18.

YOU CAN'T BEAT THE DUTCH

STATE LINE RABBIT BREEDERS ASS'N.

Adrian, Michigan (2-46) June 1-2, 1963 Judge: Harold Guthrie
 TOTAL DUTCH (41) BLACK DUTCH (14) Best Black, Jr. Doe, Weinhardts. Best Opposite Black Sr. Buck, Cooper's Hillcrest Rbtry. Exhibitors of Blacks, Coopers, Sharlotte Sagarsee, Gillin Rbtry, Jack Ellis, Clyde L. Smith, George Paupert, Weinhardts, Woodland Rbtry.
 BLUE DUTCH (8) Best Blue, Sr. Buck, Karl Schmidt. Best Opposite Blue, BEST OPPOSITE DUTCH, Sr. Doe, Paupert. Exhibitors of Blues, Schmidt, Smith, Paupert, Weinhardts Cooper, Paul Helsel.
 CHOCOLATE DUTCH (14) Best Chocolate, BEST DUTCH, Sr. Buck, Lee Oelka. Best Opposite Chocolate, Sr. Doe, Russell Betz. Exhibitors of Chocolates, Oelka, Schmidt, Cooper, Ellis, Betz, Paupert, Weinhardts.
 TORTOISE DUTCH (5) Best Tortoise, Sr. Buck, Wells' Modern Rbtry. Best Opposite Tortoise Sr. Doe, Cooper. Exhibitors of Tortoise, Wells, Cooper, Smith.
 SWEEPSTAKE POINTS: Cooper 140. Lee Oelka 76, Clyde L. Smith 60. George Paupert 51. Karl Schmidt 48. Jack Ellis 38. Sharlotte Sagarsee 35. Weinhardts 32. Russell Betz 24. Wells' Modern Rbtry. 18. Woodland Rbtry. 8. Paul Helsel 6.

YOU CAN'T BEAT THE DUTCH

PONY EXPRESS RABBIT BREEDERS ASS'N.

Roseacres Airport (2-57) June 1-2, 1963 Judge: Don Guthrie
 TOTAL DUTCH (23) BLACK DUTCH (11) Best Black, BEST DUTCH, Jr. Buck, Roberts Rabbit Ranch. Best Opposite Black, BEST OPPOSITE DUTCH, Sr. Doe, Donald Woodin; Exhibitors of Blacks, Bob Wallace, Roberts, Woodin.
 BLUE DUTCH (4) No Best Blue listed. Exhibitors of Blues, Roberts, Woodin, Wallace.
 CHOCOLATE DUTCH (2) Best Chocolate, Jr. Doe, Woodin. Best Opposite Chocolate, Sr. Buck, Woodin.
 TORTOISE DUTCH (4) Best Tortoise, Jr. Doe, Woodin. Best Opposite Tortoise, Jr. Buck Woodin. Exhibitors of Tortoise, Woodin.
 STEEL DUTCH (1) Best Steel, Sr. Buck, Roberts.
 GRAY DUTCH (2) Best Gray, Sr. Buck, Roberts, Best Opposite Gray, Jr. Doe, Roberts.
 SWEEPSTAKE POINTS: Roberts Rabbit Ranch 113. Donald Woodin 80.

YOU CAN'T BEAT THE DUTCH

HAMILTON COUNTY RABBIT BREEDERS ASS'N.

Mason, Ohio (2-60) June 1-2, 1963 Judge: Bob Byrne
 TOTAL DUTCH (56) BLACK DUTCH (29) Best Black, BEST OPPOSITE DUTCH, Jr. Doe, Mary Stohrer. Best Opposite Black, Sr. Buck, J & L Rbtry. Exhibitors of Blacks, J & L, Stohrer, Tansy's Rbtry, Melvin Heck, Donald Weeks.
 BLUE DUTCH (10) Best Blue, Sr. Buck, Stohrer. Best Opposite Blue, Sr. Doe, Stohrer. Exhibitors of Blues, Stohrer, Tansy, Bonita Buehler, Sunset Rbtry.
 CHOCOLATE DUTCH (11) Best Chocolate, Sr. Doe, Stohrer. Best Opposite Chocolate, Jr. Buck, Stohrer. Exhibitors of Chocolates, Stohrer.
 TORTOISE DUTCH (6) Best Tortoise, BEST DUTCH, Sr. Buck, Steffen's Rbtry. Best Opposite Tortoise, Sr. Doe, J & L. Exhibitors of Tortoise, Steffen's, Richard Krebs, J & L, Buehler, Stohrer.
 SWEEPSTAKE POINTS: Mary Stohrer 497. J & L Rbtry. 111. Tansy's Rbtry. 85. Donald Weeks 30. Richard Krebs 16. Sunset Rbtry. 9.

YOU CAN'T BEAT THE DUTCH

RABBIT PRODUCERS OF SANTA CLARA VALLEY

San Jose, California (2-96) June 1-2, 1963 Judge: Robert Sprague
 TOTAL DUTCH (41) BLACK DUTCH (17) Best Black, BEST DUTCH, Sr. Buck, Himalayan Fur Farm Best Opposite Black, Jr. Doe, Romeo Rbtry. Exhibitors of Blacks, Himalayan, Don Schmitz, Elmer Paquette, Oscar Harden, Don Lovejoy, Romeo.
 BLUE DUTCH (7) Best Blue, Sr. Doe, Himalayan. Best Opposite Blue, Jr. Buck, Himalayan Exhibitors of Blues, Schmitz, Harden, Himalayan, Romeo.
 CHOCOLATE DUTCH (3) Best Chocolate, Sr. Buck, Himalayan. Best Opposite Chocolate, Jr.

Doe, Himalayan. Exhibitors of Chocolates, Himalayan.
TORTOISE DUTCH (2) Best Tortoise, BEST OPPOSITE DUTCH, Sr. Doe, Don Lovejoy. Best Opposite Tortoise, Sr. Buck, Lovejoy.
STEEL DUTCH (8) Best Steel, Sr. Buck, Harden. Best Opposite Steel, Sr. Doe, Harden. Exhibitors of Steels, Harden, Himalayan, Lovejoy.
GRAY DUTCH (4) Best Gray, Sr. Doe, Himalayan. Best Opposite Gray, Sr. Buck, Himalayan Exhibitors of Grays, Himalayan, Harden.
SWEEPSTAKE POINTS: Himalayan Fur Farm 178. Oscar Harden 121. Don Lovejoy 45. Romeo Rbtry. 38. Elmer Paquette 33.

YOU CAN'T BEAT THE DUTCH

EMPIRE STATE RABBIT BREEDERS ASS'N.

Syracuse, New York (2-71) June 2, 1963 Judge: Wm. Thompson
TOTAL DUTCH (72) BLACK DUTCH (32) Best Black, BEST DUTCH, Sr. Buck, Betty Fish. Best Opposite Black, Best Opposite Dutch, Sr. Doe, Fish. Exhibitors of Blacks, Fish, John J. Baker, Twin Valley Rbtry. G. Morehead.
BLUE DUTCH (8) Best Blue, Sr. Buck, Twin Valley. Best Opposite Blue, Sr. Doe, Twin Valley. Exhibitors of Blues, Twin Valley, R. Cooper, Fish, Baker, John Cuer.
CHOCOLATE DUTCH (14) Best Chocolate, Sr. Buck, Sam Catalano. Best Opposite Chocolate, Jr. Doe, Richard VanHouten. Exhibitors of Chocolates, Catalano, Fish, K & S Rbtry Van Houten.
TORTOISE DUTCH (3) Best Tortoise, Jr. Doe, Patricia & Charles Willis. Best Opposite, Tortoise, Jr. Buck, Willis. Exhibitors of Tortoise, Markers Rbtry. Willis.
STEEL DUTCH (10) Best Steel, Sr. Buck, Fish. Best Opposite Steel, Sr. Doe, Fish. Exhibitors of Steel, Fish.
GRAY DUTCH (5) Best Steel, Sr. Buck, Fish. Best Opposite Gray, Sr. Doe, Fish. Exhibitors of Grays, Fish.
SWEEPSTAKE POINTS: Betty Fish 610. Twin Valley Rbtry. 100. Richard VanHouten 47. John Cuer 8.

YOU CAN'T BEAT THE DUTCH

FF. LEBOEUF RABBIT & CAVY BREEDERS ASS'N.

Wattsburg, Pennsylvania (2-97) June 2, 1963 Judge: Karl Sautters
TOTAL DUTCH (36) BLACK DUTCH (11) Best Black, BEST DUTCH, Sr. Buck, Jack Boughton. Best Opposite Black, BEST OPPOSITE DUTCH, Jr. Doe, Boughton. Exhibitors of Blacks, Boughton, Carletta Russell, Ramey's Rbtry.
BLUE DUTCH (3) Best Blue, Sr. Buck, Ramey. Best Opposite Blue, Jr. Buck, Russell. Exhibitors of Blues, Ramey, Russell.
CHOCOLATE DUTCH (6) Best Chocolate, Sr. Buck, Russell. Best Opposite Chocolate, Jr. Doe, Ramey, Exhibitors of Chocolates, Russell, Ramey.
TORTOISE DUTCH (16) Best Tortoise, Sr. Buck, South Erie Rbtry. Best Opposite Tortoise Jr. Doe, So. Erie. Exhibitors of Tortoise, South Erie, Ramey, Kathy Fuller.
SWEEPSTAKE POINTS: South Erie Rbtry. 143. Clifford Ramey 129. Jack Boughton 95. Carletta Russell 53. Kathy Fuller 42.

YOU CAN'T BEAT THE DUTCH

SAUGUS 4-H RABBIT CLUB

Topsfield, Massachusetts (2-88) June 2, 1963 Judge: Arthur J. Burke
TOTAL DUTCH (24) BLACK DUTCH (10) Best Black, BEST DUTCH, Sr. Doe, Teddy Stefanski. Best Opposite Black, BEST OPPOSITE DUTCH, Sr. Buck, Barbara Nickerson. Exhibitors of Blacks, Nickerson, Mary Melody Cushing, Stefanski.
BLUE DUTCH (7) Best Blue, Sr. Doe, John Scanlon. Best Opposite Blue, Sr. Buck, Scanlon Exhibitors of Blues, Scanlon, Wayne Winslow, Fred Franklin, Stefanski, Cushing.
CHOCOLATE DUTCH (3) Best Chocolate, Jr. Doe, Stefanski. Best Opposite Chocolate, Sr. Buck, George L. Smith. Exhibitors of Chocolates, Smith, Stefanski.
TORTOISE DUTCH (2) Best Tortoise, Jr. Buck, Stefanski. Best Opposite Tortoise, Jr. Doe, Stefanski.
SWEEPSTAKE POINTS: Teddy Stafanski 96. John Scanlon 32. Mary Melody Cushing 31. Bar-

bara Nickerson 36. Fred Franklin 12. George L. Smith 6.

YOU CAN'T BEAT THE DUTCH

OHIO STATE DUTCH RABBIT CLUB

Mansfield, Ohio (2-58) June 9, 1963 Judge: G. A. Burke
 TOTAL DUTCH (52) BLACK DUTCH (24) Best Black, BEST DUTCH, Jr. Buck, Joseph Penksa.
 Best Opposite Black, BEST OPPOSITE DUTCH, Jr. Doe, Jack Boughton. Exhibitors of
 Blacks, Boughton, Dave & Pats Rabbit Farm, Donald Weeks. Penksa, Circle G Rbtry.
 Thomas Jermyn, Meier & Foster, Bruce Kucharski, Mikes Rbtry, Jim Wilgor.
 BLUE DUTCH (10) Best Blue, Sr. Buck, Penksa. Best Opposite Blue, Sr. Doe, Wm. Karlin-
 ski. Exhibitors of Blues, Penksa, Karlinski, Jim Wilgor, Dave & Pat.
 CHOCOLATE DUTCH (10) Best Chocolate, Sr. Buck, Jack's Bunnies. Best Opposite Choc-
 olate, Jr. Doe, Kucharski. Exhibitors of Chocolates, Jack's, Wilgor, Penksa,
 Kucharski.
 TORTOISE DUTCH (7) Best Tortoise, Sr. Buck, A & M Emery. Best Opposite Tortoise, Sr.
 Doe, Emery. Exhibitors of Tortoise, Emery.
 STEEL DUTCH (1) Best Steel, Jr. Doe, Mikes.
 SWEEPSTAKE POINTS: Joseph Penksa 137. Jack Boughton 130. A & M Emery 84. Bruce Kuch-
 arski 56. James Wilgor 71. Jack's Bunnies 51. Dave & Pat's Rabbit Farm 38. Wm.
 Karlinsky 36. Thomas Jermyn 32. Donald Weeks 31. Meier & Foster 16. Mike's Rbtry.
 16. Circle G Rbtry. 12.

YOU CAN'T BEAT THE DUTCH

MORROW RABBIT CLUB

Mt. Gilead, Ohio (2-114) June 15-16, 1963 Judge: Vern Ashton
 TOTAL DUTCH (46) BLACK DUTCH (18) Best Black, BEST DUTCH, Sr. Buck, Donald Weeks.
 Best Opposite Black, Sr. Doe, McNary's Rbtry. Exhibitors of Blacks, Weeks, Dave
 & Pat's Rabbit Farm, Albert May, Cliff Mole, Dailays Dandies, McNary, Thomas
 Giebel, Mikes Rbtry.
 BLUE DUTCH (7) Best Blue, Sr. Buck, McNary. Best Opposite Blue, Jr. Doe, McNary.
 Exhibitors of Blues, McNary, Dailey, Dave & Pat's.
 CHOCOLATE DUTCH (6) Best Chocolate, Sr. Doe, Dailey. Best Opposite Chocolate, Sr.
 Buck, Dailey. Exhibitors of Chocolates, Dailey, Hit & Miss Rbtry, Mikes.
 TORTOISE DUTCH (9) Best Tortoise, Sr. Buck, Steffen's Rbtry. Best Opposite Tortoise,
 Sr. Doe, Buckeye Farms. Exhibitors of Tortoise, Steffens, Bel Bunny Ranch, Buck-
 eye, Dailey, Weeks, Margie Brady.
 STEEL DUTCH (3) Best Steel, BEST OPPOSITE DUTCH, Jr. Doe, Mikes. No bucks shown.
 Exhibitors of Steels, Mikes, McNary.
 GRAY DUTCH (1) Best Gray, Jr. Buck, McNary.
 SWEEPSTAKE POINTS: McNary's Rbtry. 87. Dailey's Dandies 77. Donald Weeks 66. Dave &
 Pat's Rabbit Farm 58. Clifford Mole 55. Mike's Rbtry. 48. Thomas Giebel 12. Buck-
 eye Farms 18.

YOU CAN'T BEAT THE DUTCH

TRI-STATE RABBIT & CAVY BREEDERS ASS'N.

Canfield, Ohio (2-35) June 16, 1963 Judge: James Blyth
 TOTAL DUTCH (33) BLACK DUTCH (14) Best Black, BEST DUTCH, Sr. Buck, Jack Boughton.
 Best Opposite Black, BEST OPPOSITE DUTCH, Sr. Doe, Joseph Penksa. Exhibitors of
 Blacks, Boughton, Tom Jermyn, Harry Groner, Chuck Poremba, Meier & Foster, Jack's
 Bunnies, Myron Keith Samuels.
 BLUE DUTCH (5) Best Blue, Sr. Buck, Samuels. Best Opposite Blue, Jr. Doe, Walter M.
 Clapsaddle. Exhibitors of Blues, Samuels, Clapsaddle, Wm. Karlinsky.
 CHOCOLATE DUTCH (7) Best Chocolate, Sr. Buck, Groner. Best Opposite Chocolate, Jr.
 Doe, Poremba. Exhibitors of Chocolates, Groner, Jack's, Poremba, Penksa.
 TORTOISE DUTCH (6) Best Tortoise, Sr. Buck, Kathy Fuller. Best Opposite Tortoise,
 Jr. Doe, Fuller. Exhibitors of Tortoise, Fuller, Groner, Ted Vicket.
 STEEL DUTCH (1) Best Steel, Sr. Doe, Groner.
 SWEEPSTAKE POINTS: Jack Boughton 60. Tom Jermyn 52. Joseph Penksa 46. Harry Groner
 44. Myron Keith Samuels 39. Chuck Poremba 32. Kathy Fuller 30. Jack's Bunnies 14.

Meier & Foster 12. Wm. Karlinsky 8.

YOU CAN'T BEAT THE DUTCH

CATTARAUGUS COUNTY RABBIT BREEDERS ASS'N.

Little Valley, New York (2-117) June 16, 1963 Judge: Joe Baldauf
 TOTAL DUTCH (54) BLACK DUTCH (23) Best Black, BEST DUTCH, Jr. Doe, Charles Williams.
 Best Opposite Black, BEST OPPOSITE DUTCH, Sr. Buck, Betty Fish. Exhibitors of
 Blacks, Fish, Williams, Wm. Stedman, Twin Valley Rbtry, Richard Cooper, South
 Erie Rbtry.
 BLUE DUTCH (3) Best Blue, Sr. Buck, Cooper. No does shown. Exhibitors of Blues,
 Cooper, Twin Valley.
 CHOCOLATE DUTCH (8) Best Chocolate, Jr. Doe, Cooper. Best Opposite Chocolate, Sr.
 Buck, Fish. Exhibitors of Chocolates, Fish, Richard VanHouten, Cooper, Twin Valley
 Ramey's Rbtry.
 TORTOISE DUTCH (15) Best Tortoise, Jr. Doe, South Erie. Best Opposite Tortoise, Jr.
 Buck, So. Erie. Exhibitors of Tortoise, Ramey, Charles & Patricia Widlis, Williams,
 So. Erie, Hall's Backyard Rbtry.
 STEEL DUTCH (2) Best Steel, Sr. Buck, Fish. No does shown. Exhibitors of Steels,
 Fish.
 GRAY DUTCH (2) Best Gray, Sr. Buck, Fish. No does shown. Exhibitors of Grays, Fish.
 SWEEPSTAKE POINTS: Betty Fish 211. Twin Valley Rbtry. 125. South Erie Rbtry 108.
 Charles Williams 97. Clifford Ramey 60. Hall's Backyard Rbtry. 30. Wm. Stedman 16.
 Richard VanHouten 8.

YOU CAN'T BEAT THE DUTCH

MINNESOTA STATE RABBIT BREEDERS ASS'N.

Anoka, Minnesota (1-9) June 23, 1963 Judge: Weldon Wahl
 TOTAL DUTCH (22) BLACK DUTCH (15) Best Black, BEST DUTCH, Jr. Buck, A. E. Jacobsen, Sr.
 Best Opposite Black, Jr. Doe, Hugo Planz. Exhibitors of Blacks, Rau's Rabbit
 Ranch., Jerry Dahl. Jacobsen, Ronald Boyum, Tryggestad's Rbtry, Planz.
 BLUE DUTCH (2) Best Blue, BEST OPPOSITE DUTCH, Jr. Doe, Doris Leibel. Only buck Disq
 CHOCOLATE DUTCH (2) Best Chocolate, Jr. Buck, Leibel. No does shown. Exhibitors of
 Chocolates, Leibel.
 TORTOISE DUTCH (3) Best Tortoise, Jr. Buck, Tryggestad. Best Opposite Tortoise, Jr.
 Doe, Boyum. Exhibitors of Tortoise, Tryggestad, Boyum.
 SWEEPSTAKE POINTS: Hugo Planz 65. Tryggestad's Rbtry. 20.

YOU CAN'T BEAT THE DUTCH

ORANGE COUNTY FAIR

Costa Mesa, California (2-19) July 9-11, 1963 Judge: C. E. Lewis - W. F. Gilbert
 TOTAL DUTCH (102) BLACK DUTCH (22) Best Black, BEST DUTCH, Sr. Doe, Parks' Petland.
 Best Opposite Black, Sr. Buck, Doris Brakebill. Exhibitors of Blacks, Brakebill,
 Romley's Rbtry, Sherry Robbins, Parks.
 BLUE DUTCH (22) Best Blue, Sr. Doe, Romley. Best Opposite Blue, Sr. Buck, Sheldon
 Wilson. Exhibitors of Blues, Wilson, Romley, Parks, Brakebill.
 CHOCOLATE DUTCH (17) Best Chocolate, Sr. Doe, Parks. Best Opposite Chocolate, BEST
 OPPOSITE DUTCH, Jr. Buck, Parks. Exhibitors of Chocolates, Romley, Parks, Chuck
 Troftoruben, Brakebill.
 TORTOISE DUTCH (15) Best Tortoise, Jr. Buck, Parks. Best Opposite Tortoise, Jr. Doe,
 R. C. Waters, Jr. Exhibitors of Chocolates, Romley, Parks, Waters.
 STEEL DUTCH (12) Best Steel, Jr. Doe, Parks. Best Opposite Steel, Sr. Buck, Parks.
 Exhibitors of Steels, Parks, Romley.
 GRAY DUTCH (14) Best Gray, Sr. Buck, Parks. Best Opposite Gray, Jr. Doe, Parks. Ex-
 hibitors of Grays, Parks, Romley, Wilson, Waters.
 SWEEPSTAKE POINTS: Romley's Rbtry. 621. Parks' Petland 582. Sheldon Wilson 131. R. C.
 Waters, Jr. 49. Sherry Robbins 21.

YOU CAN'T BEAT THE DUTCH

SWEEPSTAKE STANDINGS

Parks' Petland-----	1193	Bruce Nicholson-----	423
Romley's Rbtry-----	1067	Twin Valley Rbtry-----	407
Cranston Hgts. Rbtry---	972	Cooper's Hillcrest Rbtry---	406
Carroll Hadaway-----	917	Ramey's Rbtry-----	385
Betty Fish-----	821	Chuck Stanelle-----	351
Cedar Rail Rbtry-----	587	C. Jay Miller-----	350
South Erie Rbtry-----	584	Cook's Rbtry-----	330
Mary Stohrer-----	497	Roberts' Rabbit Ranch-----	319
Jack Boughton-----	481	Teddy Stefanski-----	316
Don Gingerich-----	447	Miller Bros. Rbtry-----	308

YOU CAN'T BEAT THE DUTCH

WELCOME!!!

NEW MEMBERS WELCOME!!!

WELCOME!!!

- R. C. Waters, Jr.; 10813 Reagan, Los Alamitos, Calif.
 Larry D. Cobb; R# 1, Yarmouth, Maine
 Richard A. Metz; 7408 Elizabeth St., Cincinnati 31, Ohio
 Pierce Rabbitry; 1035 E. 13th. St., Pueblo, Colo.
 Dan Harrell; 8816 Georgian Dr., Austin 53, Texas
 Mrs. Beuford Cauthorn; R# 12 - Box 569, Oklahoma City 15, Okla.
 Bett Hickman; 461 E. Locust Ave., Philadelphia 44, Pa.
 Larry Schock; 4910 Silvercrest Terr., Dayton 40, Ohio
 N. E. Lehman; 25075 Detroit Rd., Westlake, Ohio
 Wilma Fisher; 720 Palmer, Pueblo, Colo.
 Robert A. Harris; 7200 So. Grant, Littleton, Colo.
 DaMar Rabbitry; R# 1, Conley, Georgia
 Diane Newby; 3709 Grape Ave. NE, Grand Rapids 5, Mich.
 Joan Zimmerman; Short Falls, New Hampshire
 Mrs. Ernest G. Dailey; R# 2, Mt. Gilead, Ohio
 Wayne Willmann; 2403 Lincoln Ave., Cleveland 34, Ohio
 Henry C. Blom; R# 2 - Box 198, Rapid City, S. D.
 Douglas Walter; Nodaway, Iowa
 Patricia Lynn Bonar; 3913 Stonequarry Rd., Vandalia, Ohio

YOU CAN'T BEAT THE DUTCH

LATE AND VERY IMPORTANT - THE NEW GUIDE BOOK

by Tom Shufflebotham

Having all of the material in my hands ready for proof-reading in April at the National Dutch Show at Bakersfield, Calif., and having the assurance of our President that the color plates for inclusion, had either been shipped or would be shipped within 30 days of that time, I was morally certain that our new Guide Book would be in the hands of the membership by this time. Letters and telephone calls to the west coast have produced absolutely no results and we still have no color plates. This leaves me in a serious quandry. I know the membership is growing more anxious every day to have these books and I have done everything I can think of to facilitate their delivery, but at this point my hands are securely tied. Please continue to be patient and rest assured that if there is anything I can do to hurry things along it will be done.

YOU CAN'T BEAT THE DUTCH

All Breeders of DUTCH RABBITS

are invited to show at the

EASTERN DUTCH RABBIT FANCIERS CLUB

TROPHIES

ALL DUTCH FALL SHOW

RIBBONS

September 29, 1963

At the home of Delmas Cockey

1323 S. Caton Ave., Baltimore 27, Md.

Write: Mrs. Christine V. Hall, Sec'y., RD 2, Box 140, Quakertown, Pa.

7-63

RICHARDS
BUNNYLAND

BREEDER & EXHIBITOR
DUTCH -- ALL COLORS

K. EARLE RICHARDS
8149 YONGE STREET,
THORNHILL, ONTARIO

4-64

JOHN L. NELSON

BREEDER & EXHIBITOR

Famous
DUTCHENG BLOODLINES
of
Blacks - Blues - Torts.

R# 1 - Box 142-B
Crete, Illinois

3-64

L. & M. SIMONSON

BLACK DUTCH BLUE

Lowell W. Simonson
4340 E. 38 St.,

Des Moines 17, Iowa
Ph: 262-3541

I AM PROUD OF THEM

3-64

THE ATHLETIC SUPPLY CO.

TROPHIES OF DISTINCTION

330 Superior Street,
Phone: 241-6289

Westgate Village
Phone: 536-4386

TOLEDO 4, OHIO

3-64

THE WEINHARDTS
BILL - JOE - JESS

D U T C H

BLUE BLACK
TORTOISE CHOCOLATE

R#3, MANCHESTER, MICH.

6-63

MEIER & FOSTER

DUTCH HOBBYISTS -- BLACKS ONLY

(Straight Black Bred)

Stock Occasionaly For Sale

14728 Ridge Rd.,

7-73

Royalton 33, Ohio

ROMLEYS RABBITRY

ALL COLORS OF DUTCH

Second Sweepstake Winner
Last Two Years

2701 No. 21st. St.,

7-63

Phone: AM-61195

Phoenix 6, Ariz.

DUTCH REPORTER ADVERTISING RATES

Full Pg. Per issue \$10.00
1/2 Page - per issue 5.00
1/4 Page - per issue 3.00
Breeder Card-per yr. 3.00
Dbl. Br. Card-per yr. 5.00
Classified advertising
3¢ per word - 1 issue

SEND COPY TO:

MRS. W. A. WEINHARDT, ED.
R# 3, MANCHESTER, MICH.

DUTCH

BLACK CHOCOLATE

MRS. EDWIN P. HALL

R. D. 2, QUAKERTOWN, PENNA

8-64

EASTERN DUTCH RABBIT FANCIERS CLUB

SPRING and FALL SHOWS - EVERY YEAR

Breeders of DUTCH RABBITS invited to join
Dues \$2.00 yr.

Mrs. Christine V. Hall, Secretary

RD 2, Box 140 - Quakertown, Pennsylvania

7-63

Dale & LaVerna

B O R O F F

Box 28, Latty, Ohio

ALL COLORS
OF DUTCH

3-64

STOHRERS & QUINTONS RABBITRY

BLACKS
ROUND HEAD

BLUES
SHORT EARS
GOOD COLOR

CHOCOLATES
COBBY TYPE

Show Stock \$8.00 & Up
Type Does for Breeding \$5.00

Ph: CHapel 4-3657

Indpls., Ind.

MARY STOHRER
R R# 1, PARAGON, INDIANA

3-64

A.R.B.A. RABBIT & CAVY JUDGE
"BOB SCOTT"

Box 162, Conrow Road, R. D. 1,
Riverside, New Jersey

Black D U T C H Blue

Black ENGLISH Blue
ORANGE REX

White CAVIES Black

1-64

CHEYENNE RABBITRY

BOB & IRMA ERNST

Red Satins

BLACK -- BLUE -- CHOC.

DUTCH

301 E. FIRST
HOISINGTON, KANSAS

3-64

Tortoise

FAMOUS

Tortoise

"SOUTH ERIE STRAIN"

Pedigreed Tortoise Dutch

Very good type-Perfect color & Fur

Your choice of juniors from:

One, Two or Three generations
of Grand Champions

South Erie Service Plan

- #1. All requests answered the same day as received.
- #2. Complete description of stock & price list.
- #3. Colored pictures of stock.
- #4. Complete ARBA Pedigree papers sent for your approval in advance of purchase.
- #5. Stock shipped Via Railway Express.
- #6. Each crate supplied with food & water.
- #7. All stock guaranteed to be as represented.

Write or phone:

SOUTH ERIE RABBITRY
1418 W. 31st. Street
Erie, Pennsylvania
Phone: GL 56178

(Registered under #2219 with the A.R.B.A.)

Bill Zimmerley-Owner

Tortoise
8-63

A.R.B.A.

A.D.R.C.

Tortoise

Handwritten text, likely bleed-through from the reverse side of the page. The text is mostly illegible due to fading and bleed-through.

Handwritten text, likely bleed-through from the reverse side of the page. The text is mostly illegible due to fading and bleed-through.

Handwritten text, likely bleed-through from the reverse side of the page. The text is mostly illegible due to fading and bleed-through.

Handwritten text, likely bleed-through from the reverse side of the page. The text is mostly illegible due to fading and bleed-through.

Handwritten text, likely bleed-through from the reverse side of the page. The text is mostly illegible due to fading and bleed-through.

Handwritten text, likely bleed-through from the reverse side of the page. The text is mostly illegible due to fading and bleed-through.

Handwritten text, likely bleed-through from the reverse side of the page. The text is mostly illegible due to fading and bleed-through.

THE
Dutch
Reporter
 DEVOTED TO THE INTERESTS OF
 THE BREEDERS OF DUTCH
 America's Finest Rabbit

PUBLICITY ITEMS

- Pedigree Books - 50 per Book - with stub-\$1.25
- "Ideal Dutch" Mats for use in having your
 stationary printed or for your ad----- 1.00
- ADRC Official Emblem mats, with word "member"
 same uses as above----- 1.00
- Special Editions of Small Stock Mag.
 1961----- .50
- Collector's Item - 1954----- 1.00
- Dutch Stamps, for use on your correspondence,
 and many other places .01
- Shoulder Patches, Black only----- 1.00
- 2 for----- 1.75

Beautiful Dutch Decals - for your car window - carrying cases, etc. 50¢ each or
 3 for \$1.00.

Large Back Patches----- 3.25

For these items write: Mrs. Dorothea Shufflebotham, Publicity Director; Box 257,
 Valparaiso, Indiana.

"YOU CAN'T BEAT THE DUTCH" — AMERICA'S FINEST RABBIT

THE DUTCH REPORTER
 Mrs. W. A. Weinhardt
 R.# 3.
 Manchester, Michigan

Sec. 3488 P.L.S.R.
 U.S. Postage
PAID
 Manchester
 Mich.
 Permit No. 7

Jack Wireman 3-14-64
 5475 Seaman St. SW,
 R# 1, Navarre, Ohio

Forwarding
 Postage Guaranteed.

POSTMASTER: Form 3547 Requested.