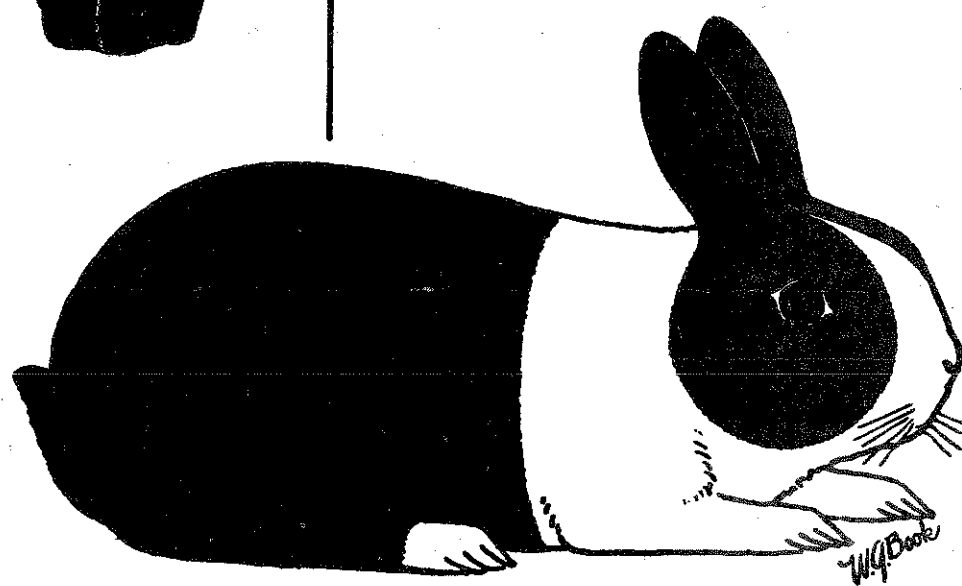




DECEMBER, 1969

The Dutch Reporter



DEVOTED TO THE INTERESTS OF THE BREEDERS OF DUTCH,

America's Finest Rabbit



American Dutch Rabbit Club

Dec 69

1970 NATIONAL DUTCH SHOW

BOOSTERS: In addition to those published, Roger Guetschow, Jack's Bunnies, Keith Nall, Berkeley Earles and Wilbur Williamson.....

Plans are falling into shape for the "BIG SHOW". Darrell Bramhall, General Chairman tells me that the Holiday Inn, on Highway 18 West of Mason City will be the "HEAD QUARTERS HOTEL" The Banquet will also be held there. Tickets will be \$3.50, Buffet style with a choice of three meats and all that goes with a good meal.

The Deadline for advertising is; March 1st, with a slight leeway, so don't "put off". DO IT NOW. Remember, a dollar here and a dollar there, put it all together and it makes for a good "Specials" list. We all know that the Dutch Club makes funds available for this Show of Shows, but the rental of space doesn't come cheap any more.

There will be no "cuts or dies" used in the catalog printing as the catalog will be printed on a Multith machine.

SEND: Ad copy to: Darrell Bramhall at 1211 -- 2nd Ave. S.W. Mason City, Ia. 50401

Send Specials to: Darrell Bramhall.....

Editor's Corner:

This is the time of year when I allow myself the luxury of retrospect. I remember good friends that are gone, but live on in memory. Madeleine and Ray Grables, remember the "bang up Dutch Show at Detroit, MI. and how hard Madeleine worked on the Gold Dutch. I don't remember the date, but I was representing Larro Feeds at the time. Had a lovely Christmas card from Ed Stahl who was 84 on Dec. 14th, another from Carl Kroboth who spent his first Christmas alone as Mrs. Kroboth had passed away Nov. 24th.

I have had several letters regarding the publishing of full Show Reports. Again, folks it's not all together a matter of my available time but a combination of conditions. Typing full show reports is a time consuming and tedious job as any would find out if they were committed to doing it, not to mention the additional cost of publishing a larger Bulletin, material and postage. This problem has been discussed at recent Board and General meetings and it is hoped that publishing the first place winners would be an acceptable compromise. The ads are just helping to defray the increased cost of the Bulletin. Ten cases of paper, \$160.00. 10 tubes of ink, \$30.00. Mimeo fax stencils, \$2.50. Covers, just received, \$60.00 not to mention, Stencils, and other items incidental to the work. In this day and age, everything costs money, "sad as the case might be". One has to be on the alert when buying and conscious of pricing. I am sending out an average of 550 Dutch Reporters (10 to 12 pages) once a month.

I am very conscious of striving to improve my work. I knew nothing of mimeograph work until I started this job a year ago. I find it a challenge and I am learning something new.

Thank you, one and all, for the articles and "KEEP THEM COMING". Now's the time to write. As soon as the shows start and spring work begins, time is at a premium and we don't want a repeat of last summer, "Nothing in the D.R. etc."

Good old Minnesota, can't beat the weather. 40 above one day and 25 below another. Nothing like feeding and watering about 200 rabbits in a 25 below day with a wind chill of 51 below. That'll chase the cobwebs out of a brain. Surprising how well the rabbit fare tho. They've learned to eat and drink when it is offered in order to survive. There will be a few frozen tails and frayed ears but on the whole they are looking pretty sharp. This is fur sparkling time.....Doris Leibel

The Dutch Reporter

Volume 26, No. 11

December, 1969

AMERICAN DUTCH RABBIT CLUB

Mrs. W.A. Weinhardt, Sec.-Treas., 12024 Pleasant Lake Rd., Manchester, Mi. 48158
Membership fees and dues for one year, \$3.00; Combination Husband-Wife, \$5.00
Show Sanction fees, \$5.00, with a \$1.00 listing fee, total \$6.00
Our Club is affilliated with the American Rabbit Breeder's Assn. and by sending
\$7.75 instead of \$3.00 you will become a member of both associations.

The Dutch Reporter is the official organ of the American Dutch Rabbit Club, however,
opinions expressed in articles in this publication are not necessarily those of the
organization or the Editor, Doris Leibel Editor.

OFFICERS:

President, Don Reid, Rte. #1, Box 159, Lockport, Il., 60441
Vice-Pres, Myron Stinchelfer, 426 Union Ave, Bucyrus, Oh. 44820
Sec.-Treas, Mrs. W.A. Weinhardt, 12024 Pleasant Lake Road, Manchester, Mi. 48158
Publicity Directors, Mr. & Mrs. James Walker, 5959 So. Old 30 Highway, Westerville,
Ohio, 43081 (NOTE: NEW ADDRESS)
Dutch Reporter Editor, Mrs. Doris Leibel, 3850 Beau d' Rue Dr. St. Paul, Mn. 55111

BOARD of DIRECTORS:

Don Lovejoy, Salinas, Calif. W.R. Griffith, Chattanooga, Tn.
Stanley Googlein, Fort Wayne, Ind. David Paul, Des Moines, Ia.
Clyde J. Jones, Fort Worth, Tx. Doris Leibel, St. Paul, Mn.

DUTCH REPORTER ADVERTISING RATES:

Full page, one issue.....	\$20.00	1/2 page, one issue.....	\$10.00
1/4 page, one issue.....	6.00	Breeder Card, one year.....	6.00
		Dable Breeder Card, one year.....	\$10.00

Send copy and remittance to Doris Leibel, Editor

BULLETIN MATERIAL MUST BE RECEIVED BY THE 10th of the MONTH IN ORDER TO BE INCLUDED
IN THE CURRENT ISSUE. Anything received after the 10th of the month will be held
over for the next issue, with the possible exception of surplus articles which
may have to be spaced out some what and Show Reports that arrive in groups to large
to publish in one issue.

SEND ALL CHANGES OF ADDRESS TO SECRETARY'S OFFICE AS THE ADDRESS STENCILS ARE CUT
BY Mrs. Weinhardt. I hope that we have arrived at a system now by where Mrs.
Weinhardt closes her books the last day of the month. Sends the monthly information
to me, including current stencils, by the 10th and I will endeavor to have the
D.R. out in the week of the 21st. All information from the Secretary's office will
be dated and in one section, with the exception of the few show reports used as
fillers. Secretary's information includes, Chit Chat, Sweepstakes Standings,
Coming Sweepstakes Shows and New Members.

JUST A WORD TO SHOW SECRETARIES & LOCAL CLUBS,....GET YOUR REQUESTS FOR SANCTION-
LISTING IN AS EARLY AS POSSIBLE AND HELP US TO GIVE YOUR SHOW ADEQUATE PUBLICITY.

You Can't Beat The Dutch

THE PRESIDENT'S CORNER.....

Happy New Year to All. Look's as if the Dutch Club will have a very active 1970.. I want to thank all of the Officers, that have cooperated, and all committees. Will be contacting some of the Officers soon in regard to articles, etc. I would like to thank Doris Leibel for an excellent job on the Dutch Reporter for 1969. She has made a few mistakes and she knows it. She is trying to do her best at all times. She has had many problems, it would be impossible to list all of them. I have received ten issues to date, Dec. 23rd, of the D.R. 1969. The two issues marked Aug-Sept. and Sept.-Oct. are not two months in one issue. You will notice that Doris made three issues with temporary covers. You will also notice that each temporary cover was better than the last. Doris has had complaints on this and we will be back to printed covers as soon as they can be printed. Cost of printed covers etc. will be taken up at the next Board meeting. Very few members realize the cost of putting out the D.R. today. We all know that third class mail takes an average of three weeks to be delivered. We just cannot afford to send them first class. Several of the members have sent money to Doris for her to send their copy first class. (I do).

What goes into the D.R. depends on what we all send in. I would like to invite every member of the Dutch Club to send in an article to Doris. Wouldn't it be nice if members that wrote in complaining how little is in the D.R. would take the same amount of time to send in an article? If you need a couple of subjects, I will start them out. First subject is change of weights of Dutch. Since last ARBA bulletin had several letters protesting weight changes. You will notice that A.R.B.A. Board recommended that this subject be turned over to A.R.B.A. Standards Committee. Mr. Al Meier is Chairman of this Committee. Letters on this subject should be sent to him and a carbon copy to the D.R., would give us several articles. I believe that there will be at least one in this issue of the D.R. My personal opinion on this subject is that we have an ideal weight of four and one half pounds. Let us breed to meet standard and not change the standard to meet the rabbit. I have no problems raising good healthy Dutch out of 4½ to 5 pound does but have a heck of a time getting litters out of those 3½ pound does. A junior Dutch is a junior till it is one DAY less than six months. The day it is six months, it is a SENIOR. Cannot see limiting a JUNIOR to 3½ pounds and then the NEXT DAY it can go to 5½ pounds. In other words my personal opinion is not to make any changes in weights of DUTCH...

Next subject is eye color. Had inquiry from member asking about eye color for Blue Dutch. Blue Dutch are to have Blue eyes. He was wondering why some Blue Dutch were being passed with hazel eyes? I went out and looked at all the eyes in my Blue Dutch Now go out and look at the eyes in your Blue Dutch....What color are they? Made several phone calls on this subject. Did not get definite answers. Hope to get official explanation on this shortly. My thoughts on this are: The center, Bull's Eye is called the pupil. This is the part of the eye that is to be blue. The iris is the part of the eye that surrounds the pupil (color). This is the part of the eye that varies. Some of my Blue Dutch have a bluish cast and some a washed out hazel?? So.....I think the center (pupil) is the part of the eye that is to be blue. What do you think?

by: Don Reid

YOU CAN'T BEAT THE DUTCH

Editor's Note: He'll let me hear about this one, but HAPPY January 12th BIRTHDAY to Prez. Don Reid.....

YOU CAN'T BEAT THE DUTCH

1970 NATIONAL DUTCH SHOW, Mason City, Iowa, April 24-26. Place your ads in the Premium List by sending them to: Darrell Bramhall, 1211 - 2nd St. S.W. Mason City, Iowa 50401.

GUEST WRITER of the MONTH, Stan Goeglein, Fort Wayne, Ind..... ADRC Director

Tips on Conditioning your Dutch and their General Needs.....

Before I endeavor to pass along through this medium a few observations and opinions and maybe a tip or two on the general physical condition of the fine little Dutchman and his needs, let me say here and now that I hope all of this article is regarded solely as the personal opinion of a Dutch fancier and should not be regarded as the sole gospel on this subject. To start with, I feel that getting a Dutch in good condition and getting a Dutch in good "Show Condition" are one and the same. I will grant you that by the help of certain protein feeds you can retain the bloom on a Blue, for example, or seemingly put that extra sheen of gloss ~ your blacks, however, these additives are merely the final touch in conditioning your Dutch for the show table.

The basis must be applied first, or these touches are meaningless. By the basis, I am referring to the everyday care of Dutch. First and absolutely foremost in the list of necessities in conditioning a Dutch, whether for the show table, or what have you, is that liquid ingredient known as water. Any breeder of livestock can verify that you can skip a feeding now and then with no ill effects, but water, fresh and clean is an everyday necessity in successful livestock breeding.

The second most important ingredient is your feed. The little Dutch actually requires very little feed to keep in condition. Going by the theory that most breeders feed in the evening as I do, I have found that what is cleaned up in 12 hours is all that is necessary for a days feeding.

Unless rabbits are in lots, they only feed their young at night and consume feed themselves at that time during those evening hours.

When the subject of conditioning arises, it is almost a sure bet that the subject of hutches will arise at the same time. On this subject there are so many pros and cons that all I can say is what my personal experience has shown me. First, I find that when Dutch are on solid floors with straw bedding to chow on, they seem in a more natural environment and have maintained a more steady general physical condition as for raising young, maintaining weight, etc. I feed no hay at all, but feel roughage is good for rabbits that are on a pellet diet, and so rely on the straw used for bedding to supply the necessary roughage. It has been told to me many times over the years, that hay fed continuously to Dutch retains their chances of continually producing well-furred offspring. Being a nut of sorts on Dutch fur, I have found that it must be produced from generation to generation from both the doe and buck factor to retain fur with the ideal flyback. As to the size of hutches that are ideal for Dutch, again you enter a field of wide controversy. From personal experience with my Dutch, I find that there are two things that are most important. First is the height of the hutch. I feel that although Dutch are small, you still need an ideal height of 18 inches for your hutches. The reason for this is that fumes rise in a hutch just like heat, and if you have the 14 or 16 inch heights, you will run into a more prevalent problem of runny eyes and general bacterial problems. Secondly, I think length of the hutch is far more important than depth of hutch. Now let me mention that I am referring to solid wooden hutches with wire fronts only. The reason for this being, the convenience of only reaching in 18 or 20 inches to reach a rabbit, better than having to go in, say, 36 inches. Also, in a hutch that has length over depth, you are able to observe your litters by eye. As a closing remark never fear of losing type in your Dutch because of a large hutch; for type is bred into an animal and it is not lost by a large hutch or retained by a small one. Remember, we are all at our best, when functioning under ideal environmental conditions.....

~~YOU CAN'T BEAT THE DUTCH~~

FROM OUR MEMBERS AND FRIENDS:

Gentlemen of the American:
Mr. Don Reid

This letter is in reference to an item in the Nov-Dec. Bulletin, concerning a change in the Dutch Standard of Perfection. At first it didn't appear to be much of a change or a very significant one. After studying the matter, it is evident that it is a very radical and significant change of the Standard, if passed by the Standards Committee. For the American, at the Convention, to have approved a change of this magnitude, unanimously, is alarming.

The Standard of Perfection is the basis of all Judging, plus guide lines for Breeders to follow. The challenge of breeding rabbits is the hope that one will breed the "perfect rabbit", as set forth in the standard. If most of the Dutch had met the Standard, and a new challenge were needed, then the Standard should be changed. It doesn't seem that all Dutch have done this, rather, some have departed from the standard and now want the standard changed to fit their rabbits, rather than face the challenge of breeding their stock to fit the standard. Many breeders have been trying to reach of the standard and their reward will be that they are wrong and those who worked away from the standard are correct.

Any change in the Standard should be for perfection, towards the ideal weight, not away from it. Reducing the top weight from $5\frac{1}{2}$ to 5 pounds might not be a bad idea, if the bottom weight were raised to 4 pounds, as this would improve and tighten the standard. If the bottom weight is lowered away from the ideal weight the Standard is not being improved, it is being placed one sided, and is working away from the Standard. The margin from $4\frac{1}{2}$ pounds to 5 pounds is 25 per cent of the weight deviation. The margin from $4\frac{1}{2}$ to 3 pounds is 75 per cent of the weight deviation. Add this to the proposed change, limit to $3\frac{1}{2}$ pounds on juniors and the Standard would be out of line at the bottom end.

If the philosophy of changing the Standard to fit the rabbits is followed, then I realize my reasoning is incorrect. However, if one tries to breed the rabbits to fit the Standard, then my reasoning is correct, sound and proper.....

Respectfully,
Robert K. Brown, Valparaiso, Ind.

From Betty L. Minor, Galloway, Ohio

We never have many entries in the fur classes, Why? Fur is an important factor. The reason I say this is that I was beaten out of 1st place recently on fur. I expect that there are quite a few who don't know good fur, especially new breeders. I don't know to much about it, but am learning. I thought it would help our fur classes if each Dutch Exhibitor would enter at least one rabbit in fur class (including myself) every time they enter a show, no matter where the show was held. Young new breeders would learn about fur and the fur class would hold as much interest as the other classes. Just think what a nice fur class we could have if everyone did this at each show. Also think of the improvement on Dutch Breeding in itself. Just trying to boost the fur a little.....

~~-----YOU CAN'T BEAT THE DUTCH-----~~

Plan on attending the A.R.B.A. Convention in October, 1970 at Syracuse, New York...

From our Members etc., continued.....

Don Reid, Pres. of ADRC
Al Mier, Chairman ARBA Standards Committee
Dutch Club Members,....

The changes that were passed on our Dutch Standards of Perfection by the Board of the A.R.B.A. at the Calgary Convention and reported in the Nov.-Dec. bulletin were ridiculous. I was annoyed by the fact that the motion was made by a Dutch Club member. Evidently those supporting this motion hadn't given it enough thought.

We are still trying to reach our Standard of Perfection and breed the ideal Dutch. Let us review our present Standard and the effect these changes will have. Under weight and condition, "Ideal weight, senior bucks and does, $4\frac{1}{2}$ pounds, Registration weights $3\frac{1}{2}$ to $5\frac{1}{2}$ pounds." Then under instructions to Judges, on ears and weight, "In consideration of ears and weight, any variation from Ideal specifications either over or under, should be considered as a departure from the Standard requirements. Ears to be in balance with animal whether it be a $3\frac{1}{2}$ or $5\frac{1}{2}$ pound senior or junior."

We have been seeing too many of these small type Dutch, with short Polish ears. Breeders are to blame for this by advertising, Toy Type with Short Ears. Judges, are paying too little attention to our present Standard, are giving newcomers to our fancy the impression that these are Standard of perfection requirements. As our club membership has close to 50% turnover, you may readily see the effect that this can have on balloting for changes in our standard.

The ideal weight has always been $4\frac{1}{2}$ pounds and I have yet to hear of any objection to this. Yet there are those that advocate lowering of our bottom weights from $3\frac{1}{2}$ to 3 pounds.

Having been a member of the ARBA about 40 years, a member of the Dutch Club about the same number, attended 27 ARBA Conventions, missing only one National Dutch Show as a Judge, Breeder and Exhibitor and having bred Best of Breed at several of these, I can honestly say that I have yet to see or breed the Perfect Dutch. This ideal is something that we have been trying to attain since our Standard was first written, and we have not yet done so.

How could any Breeder expect to produce the perfect Dutch by using a 3 pound buck, which would be 50% below the Ideal Weight. Like begets Like, and what goes in must come out, it would not be many generations until we would be producing Dutch that would be smaller than Polish or the Netherland Dwarf.

Should these changes be approved by the Standards Committee (ARBA) a Senior going over 5# could not be registered. It would only be $\frac{1}{2}$ # over Ideal Weight, yet a 3 #er, which would be $1\frac{1}{2}$ # below Ideal Weight could be. A Junior weighting over $3\frac{1}{2}$ could be eliminated. How silly and unfair these proposed changes are to fanciers who have been working toward our Standard of Perfection and not against it. I trust that the proposed changes will never become part of our standard.

Let us all strive to breed the PERFECT DUTCH that at least comes close to our standard instead of trying to make the Standard fit the rabbit....

Tom Shufflebotham, Valparaiso, Ind.

~~YOU CAN'T BEAT THE DUTCH~~

From our Members, Roy Fox, Cridersville, Ohio,.....

Mrs. Leibel: I like the way that you put the issue month on the cover of the Dutch Reporter. I'd sure like to hear from that "even tempered gentleman" Tom Shufflebotham in the Reporter again. I would like to know what he's forgotten. My Reporter usually changes hands several times so don't remember the advertising rates, however enclosed is \$6.00 which I think is the cost of a breeder card for one year.

Since you printed my views on the new Dutch Standard I've received a few letters. Most found fault with me, but none stuck up for the standard. The most h---I caught was over the dewlap. That's my fault. I don't like a big dewlap. It's obnoxious. The standard says that a slight dewlap is O.K. A judge that sees a Dutch that poses in a crouch may call a dewlap when in the proper position there is none. That is why I say this. Most does that I have seem to carry this trait after a few litters. Sorry if I caused a commotion over this.

Can someone give me the reasoning behind this weight deal? It seems to me that there isn't much. There seems to be a movement afoot to pull the standard toward the Polish. Here we have an animal that can be used for food, lab and show. Very few people have a lab outlet, not very many are of show quality, that leaves kill and bury or kill and sell the meat. With the smaller standard a jr. eliminated for over 3 # you are discriminating against all the standards that have been set up by a lot of hard working people that have made this beautiful animal what it is now. If one would see the show reports of Dutch in this area in the early "50's" they would have a hard time beleiving that the Dutchman has come as far as it has. It has been a three fold animal, Lab, Show and Meat. I still think that it came up most as a nurse doe for the larger breeds. Only the best babies were kept. This seems to carry thru as a maternal instinct. Why are people trying to ruin a wonderful breed. I ask this possibly as I like a top of the scale doe and a bottom of the scale buck. This is kept on for generations. When the does get smaller and also the bucks, wouldn't it help if a larger buck were brought in once in awhile?

Thomas Edison said a "genius is made of 1% inspiration and 99% perspiration" One look at the beautiful Dutch gives inspiration. It takes a lot of cussing, praying, sweat and hard work to have Dutch to meet the standard. It takes a lot of "bull" to get the standard changed to the breeder.

Doris has begged for articles. She has had poor results to date. It isn't her fault. I tried to start a good discussion but you people don't respond. I guess I hit to close to home. Articles may seem old to older breeders but to new fanciers they are a gold mine.

~~YOU CAN'T BEAT THE DUTCH~~

Salinas Valley RBA-70-1-49

July 27, 1969 Sherwood Park, Salinas Calif. Robert Horschbach
Sweepstakes Points: Regal Rbtry. 18. Elmer Paquette, 90. Dave Shewmaker, 79. Ron Gilbertson, 694. Don Lovejoy, 78. Total Dutch (79) Blacks (20) SB (3) B. Blk. Lovejoy, SD. (3) NM. JB (7) Gilbertson, JD (7) Gilbertson, BLUES (15) SB (4) Gilbertson SD. (1) Gilbertson, JB. (4) Gilbertson, JD (6) BOS. B. Tort. Lovejoy, CHOCOLATES (7) SB (1) NM. JB (3) B. Choc. Gilbertson, JD (3) Gilbertson, TORTOISE (22) SB (4) NM. SD (2) NM. JB (11) BOB, Gilbertson, JD (5) NM. STEELS (1) JB (1) Gilbertson, GRAY (14) SB (4) B. Gray, Gilbertson, SD (0) JB (4) Gilbertson, JD (6) Gilbertson.

Ross Co. Fair-69-2-138

Aug. 5-9, 1969 Chillicothe, Ohio Judge, Harold Krahl
Sweepstakes Points: Hand N' Hand, 65. Robin Cole, 26. Total Dutch (33) BLACKS (15) SB (2) BOB, Hand N' Hand, SD. (4) NM. JB (7) NM. JD (2) NM. BLUES (5) SB (1) NM. SD (0) JB (3) Hand N' Hand, JD (1) NM. CHOCOLATES (5) SB (1) Cole, SD (1) BOS, Cole, JB (2) NM. JD (1) NM, TORTOISE (6) SB (1) B. Tort, Cole. SD. (1) disq, JB (1) NM, JD (3) NM. GRAYS (2) Shown by NM.

Something of interest to our members.....

Mrs. W.A. Weinhardt from Al Meier, Chairman of A.R.B.A. Standards Committee.....

The primary reason I could give you no answer to your questions regarding the Standard Committee's ruling on the proposed Dutch weight revision was that it had been submitted to the Committee for their vote and the final returns are only now just in. A delay in submitting the question to the committee was caused by the Standards Committee not having any communication from the Dutch Club or its Standard Committee. As a matter of fact, we still have had no communications from either and have acted on the matter as it was obtained from the A.R.B.A. Bulletin's minutes of the A.R.B.A. Director's meeting.

The result of the A.R.B.A. Standards Committee vote was as follows: Six (6) committee members against the revision, one (1) committee member for the revision, the chairman abstaining. Therefore the revision of the Dutch Standard weights has been disapproved and the present weight limits of $3\frac{1}{2}$ to $5\frac{1}{2}$ pounds for seniors and an and ideal weight of $4\frac{1}{2}$ pounds for seniors is to be retained.

You and the Dutch Club members may be interested in the comments of the committee members as to their reasons for their vote. All members were asked to comment on the change. 1 -- The standards of a breed are asked to describe the ideal, the reduction of weight did not bring the Dutch rabbit closer to its ideal. We would be asking of a one half pound tolerance above the ideal weight and allowing a one and one half pound tolerance below. 2 -- None of the objectives outlined for the perfect Dutch rabbit indicate small size as being a plus characteristic. 3 -- The weight limit requested for the junior Dutch was so far from the ideal senior weight that an animal passing, on its age, from junior to senior would either be handicapped as a senior while still a junior, have been eliminated for weight. An animal is a junior by definition, until the day it becomes six months old, one meeting the junior weights would, upon becoming a senior the following day, be cut for being too small. 4 -- To summarize; the committee feels that no real purpose, beneficial to the Dutch rabbit or its breeders is accomplished by the weight revision.

To those club members who are displeased by the A.R.B.A. Standards Committee's ruling let me state that the vote for the revision was cast by a Dutch breeder and the six votes against included the votes of four long time Dutch breeders -- not including the chairman who didn't vote but concurs in the decision. Sincerely, Al.....

~~YOU CAN'T BEAT THE DUTCH~~

Received, 1-2-70

Calif. Expo & Rabbit Show-70-1-78

Sept. 4-9, 1969

Sacramento, Calif. Judge; Fred Cremer

Sweepstakes Points: Clipfort Rabbitry, 577. Leonard Weir, 310, Regal Rabbitry, none. Total Dutch (99) Blacks (13) SB, (3) B. Blk. Weir,

SD, (3) Weir, JB (3) Weir, JD (4) BO NM, BLUES (18) SB (4) Clipfort, SD (5) Clipfo

JB (4) BOB Weir, JD (5) Weir, CHOCOLATES (15) SB, (4) B. Choc, Clipfort, SD (3)

Weir, JB (3) NM, JD (5) Clipfort, TORTOISE (21) SB (4) B. Tort, Clipfort, SD (3)

NM, JB (9) NM, JD (5) NM, STEELS (14) SB (4) B. Steel, Clipfort, SD (4) NM, JB (3)

Weir, JD (3) Weir, GRAYS (18) SB (4) Weir, SD (5) B. Gray, Weir, JB (4) Clipfort,

JD (5) Weir.

~~YOU CAN'T BEAT THE DUTCH~~

Daughter to friend, " I developed a whole new personality yesterday, but father made me wash it off"

CHIT CHAT...

Here it is, the end of an old year---not such a good one for the ADRC. We did sanction the same number of shows held in 1969 as were sanctioned in 1968 and have 39 shows sanctioned for 1970. The bad news lies in our decline in membership. As of this date we have a total of 479 members, which is 221 less than we had on April 1, 1969, which was the high point since I became your Secretary in 1956. I think this means that we must all work a little harder, especially your secretary..... There are just as many (or more) Dutch being shown as last spring and just as great a demand for breeding stock as ever, so I guess it is up to us to make a greater effort to sell our Club as well as breeding stock. Let's each and every one of us resolve to solicit at least one new member in 1970.

Rabbit activities are at their lowest ebb of the year all over the country and especially in those cold northern states. We are having very few litters, but saving most of them. Just hope that there are one or two good ones in those litters that are doing well. It seems most years the best ones are born in December.

The crop of Christmas cards this year was bigger and better than ever and many from my rabbit friends contained nice friendly notes. Only sorry that I was not able to remember all of you with cards and notes. One that I might think would be of interest to our older members came from a former Canadian member K. Earle Richards. He isn't a bit well and no longer able to work, saying, "Am unable to walk very far before I have to stop and get my breath, otherwise I feel fine. I am now getting a small pension." I feel sure that Earles would like to hear from anyone who might remember him. His address is, 12 McKee Ave., Willowdale, Ont. Canada

We are full of plans to attend our first show of the year, at Springfield, Ohio, Jan. 25th---This is always a good show and we are looking forward to a nice visit with Barb and Jim Walker---for the first time at their new home in Westerville, Ohio. We saw it once before before they moved in and know that they have done a lot of work on it. Hope to see many of you at the spring shows.....

WELCOME NEW MEMBERS

Harry Rice, R#1, Portsmouth, Oh. 45662
 Mrs. Emma R. Womack, 508 E. 14th Ave. Cordele, Ga. 31015
 Ronnie Broderius, 7801 N. 37th Ave. Phoenix, Az. 85021
 Mr. & Mrs. Robert Mohr, Box 352, Rosemount, Mn. 55068
 K.L. Poole, R# 8, Defiance, Oh. 43512
 Leonard C. Heroux, Jr. 422 Main St. Yalesville, Ct. 06492
 Allen Boerst, 11 Locust, Hammond, In. 46325
 Lightsfoot Rabbitry, 10405 S.E. 11th, Bellevue, Wa. 98024
 George Lorenz, 969 Johnson St. Elmira, N.Y. 14901
 Richard R. Frey, 190 Midlane Dr. Hillard, Oh. 43026
 Wilbur Williamson, R# 7-Box 75, LaPorte, In.
 Donald L. Mahan, Robinson Place, Westboro, Ma. 01581
 Martha Howe, 815 N. 5th St. Beatrice, Nb. 68310
 Mrs. W.T. Hobbs, 2429 Norfolk St. Augusta, Ga. 30906
 W.E. Kimball, 1534 W. Pleasant St., Springfield, Oh. 45503
 Ronald G. Keeler, P.O. Box 13, Grandview, Id. 83624
 Roger Eich, Dallas Center, Ia. 50063
 Jeffrey Stroud, 5818 Lucy Lane, Pasadena, Tx. 77505
 Robert W. Bennett, 116 Colona St., Wycoff, N.J. 07481
 Terry and Gayle Swader Rbtry. 5617 Eastbourne Dr. Springfield, Va. 22151
 John C. Price, Jr. 37 Belvidere St. Nazareth, Pa. 18064

Sec. Cornor Continues, received Jan 2, 1970 for publication.....

Coming Sweepstakes Shows

- Jan. 25, Rabbit Breeders of San Fernando Valley, Sec. Mrs. Allen Crosscy, 7960 Stansberry, Panorama, Ca. 91402
- Jan 16-18, Gulf Coast RPA at Palmetto Co. Fair, Palmetto, Fl. Sec. R.E. Mosher, P.O. Box 52, Parrish, Fl. 33564
- Feb. 4-8, South West Exposition & Fat Stock Show, W.R. Watt, Pres. Mgr. P.O. Box 150 Ft. Worth, Tx. 76101
- Feb. 8, Lima R&CBA, Sec. Willard Morris, R#1-Box 44 Lakeview, Oh. 43331
- Feb. 3-14, Fla State Fair with So. Fla RBA, Inc. Sec. Mrs. Oreen Hoblitzell, R#6-Box 511, Tampa, Fl. 33617
- Feb. 14-15, San Antonio RBA with San Antonio Livestock Exposition, Sec. Mrs. Maurice Etter, 4314 Commercial, San Antonio, Tx. 78221
- Feb. 14-15, Golden West RBA in Pomona, Sec. Sunny Harper, 20041 Clark St. Orange Co. 92667
- Feb. 21, Ariz RF in Madison Park, Phoenix, Sec. Julia M. Byus, 2819 N. Edith Bl'vd. Tucson, Az. 85716
- Feb. 22, Peoria Area RBA at Exposition Garden, Peoria, Sec. Helen Miller, Box 25, Maquon, Il. 61458
- Feb. 21-22, Bay Area RBA in Pleasanton, Ca. sec, Heinz Hofmann, 327 Alhambra Val. Rd, Martinez, Ca. 94553
- Feb. 22, Salt City RBA in Hutchinson, Ks. Sec. Louise Johnson, 712 North St. Halstead, Ks. 67056.
- Feb. 22-28, Cen. Fla. Fair with Cen. Fla. RBA at Orlando. Sec. Ethel N. Westeen, P.O. Box 6633, Orlando, Fla. 32803.
- Feb. 25-29, Houston Livestock Show, Astrodome, Houston, Tx. Sec. Ruth Teasdale, 1113 E. Davis, Conroe, Tx. 77301
- March 1, Kanakee Val. Inc. Sec. Kathy Kahler, Box 11, Custer Park, Il. 60418
- Mar. 8, Gulf Coast R.C. at So. Texas State Frags. Beaumont, Sec. Mrs. Alma Ogg, Rte. #3 - Box 243, Orange, Tx. 77630
- Mar. 15, N. Cen. Mor. RBA. at Richmond, Mo. Sec. Carl D. Gosorski, R#1 Higginsville Mo. 64037
- Mar. 17, Pima Co. Fair with Cactus RBA, Sec. Dorothy Dunbar, R# 9, Box 488 E. Tucson, Az. 85704
- Mar. 26-28, Michigan State RBA at E. Lansing, Sec. Mrs. Ronald Hathaway, R#2, Ludington, Mi. 49431
- April 4, Kansas State DRC at Hutchinson, Ks. Sec. Louise Johnson, 712 North St. Halstead, Ks. 67056
- April 5, Ohio State DRC at Tiffen, Ohio, Soc. Mildred Hand, 1144 E. Walnut St. Lancaster, Oh. 43130
- April 1-5, Three Corners RC at Kansas State Frags. Sec. Irma Ernst, 301 E. First Hoisington, Ks. 67544
- April 11-12, Texas Panhandle RBA at Tri-State Grgds. Amarillo, Sec. Jim Ada Hill, 505 Tennessee, Amarillo, Tx. 79106
- April 24-26, NATIONAL DUTCH SHOW at Mason City, Iowa, Sec. Doris Leibel, 3850 Beau d' Rue Dr. St. Paul, Mn. 55111. (Note, No other show will be sanctioned for a Dutch Sweepstakes on these dates within a radius of 500 miles of Mason City, J.W.)
- May 9, Western Michigan RBA at Lowell, Sec. Anna Renton, 1538 - 44th St. S.E. Grand Rapids, Mi. 49508
- May 9-10, Tulsa RBA, Inc. at Tulsa, Okla. Sec. Jack Lockhart, R# 1, Box 861, Owasso, Ok. 74055
- May 16-17, Portsmouth RBA of Ohio at Lucasville, Oh. Sec. Marion Bess, Jersey Ridge Rd. Maysville, Ky. 41056
- North La. RGA in Shreveport, Sec. Linda Warren, R#1-Box 377, Koithville, La. 71034
- June 20-21, Mad River Val. R&CBA, Sec. Joyce Judy, 10 Central Ave. Mechanicsburg, Oh. 43044

SWEEPSTAKES STANDINGS, dated 12-29-69

Leonard Weir, Ca. (11)-----6413	Sunset Rbtry, Ca. (5)-----1989
Clipfort Rbtry, Ca. (11)-----5577	Dale Zentner, Ia. (7)-----1530
Sweet Success Rbtry, Co. (3)-----3185	E.D. Smith, Va. (4)-----1517
Larry Bengtson, Mn. (4)-----3009	J.R. Cooper, N.Y. (6)-----1393
C. & D. Jones, Tx. (4)-----2563	Cook's Rbtry, Wis. (3)-----1283
Rin Gilbertson, Ca. (5)-----2554	Wm. Schaefer, Conn. (6)-----1270
McNary's Rbtry, Oh. (7)-----2262	Troy Hutcheson, Mi. (8)-----1249
Hand N' Hand Rbtry, Oh. (14)-----2176	Googloin & Shaw, Ind. (7)-----1178
Mike's Rbtry, Oh. (12)-----2100	Warren McNamara, Md. (6)-----1165
Cooper's H.C. Rbtry, Mi. (9)-----2077	Maurice Etter, Tx. (3)-----1055

-----YOU CAN'T BEAT THE DUTCH-----

Williams County Fair-70-1-56

Sept. 5-10, 1969 Montpelier, Oh. Judge: Bernadine Barnes
Sweepstakes Points: Robert Burns, 18. Total Dutch (15) Blacks (5) SB (2) NM,
SD (3) BOB Burns, BLUES (5) Shown by NM's, CHOCOLATES (3) Shown by NM's, TORTOISE
(2) shown by NM's.

Mattatuck RBA, Inc. - 70-1-26

Sept. 6-7., 1969 Bethlehem, Conn. Judge, John Peplowski
Sweepstakes Points: William A. Schaefer, 328, Harry Anthony Jr, 183, Double Dutch
Rabbits, 58, Christopher Bagge 63, Total Dutch (67) BLACKS (13) SB (4) Schaefer,
SD (4) Schaefer, JB (3) Schaefer, JD (2) B. Blk, Bagge, BLUES (28) SB (9)
NM, SD (3) NM, JB (5) B. Blu, NM, JD (11) NM, CHOCOLATES (13) SB (5) Double Dutch,
SD (3) NM, JB (3) B. Choc, Bagge, Jr. D. (2) Schaefer, TORTOISE (11) SB (2) Schaefer
SD (3) Schaefer, JB (3) Schaefer, JD (3) BOS Schaefer, STEELS (1) NM, GRAYS (1) NM,

Tenn. Val. A & I Fair-69-2-79

Sept. 6-14, 1969 Knoxville, Tn. Judge: Robert Byrne
Sweepstakes Points: Jimmy Hillard, 258, Robert McKenna, 50, Hugh Barnett, 166,
R. & G. Barnett, 9, Total Dutch (57) BLACKS (21) SB (6) Hillard, SD (4) BOB Mc-
Kenna, JB (6) Hillard, JD (5) H. Barnett, BLUES (13) SB (2) Hillard, SD (3) B. Blue
H. Barnett, JB (6) Hillard, JD (2) H. Barnett, CHOCOLATES (6) SB (1) Hillard,
SD (2) B. Choc, Hillard, JB (2) H. Barnett, JD(1) H. Barnett, TORTOISE (14) SB (2)
NM, SD (5) NM, JB (4) NM, JD (3) NM, GRAYS (3) SD (1) McKenna, JB (1) McKenna
JD (1) B. Gray, McKenna.

Spokane Interstate Fair, Inland Empire RBA-70-1-55

Sept. 6-14, 1969 Spokane, Wa. Judge: Steve West
Sweepstakes Points: Gary Broadbent, 12, Total Dutch (6) BLACKS (6) Shown by NM's
except for SD (2) Broadbent.

Wes-Tex RBA - 70-1-14

Sept. 7, 1969 Buffalo Gap, Tx. Judge: Don Hawkings
Sweepstakes Points: C & C Jones, 623, Bryon Wilson, 118 Total Dutch (50) BLACKS
(17) SB (4) BOB Jones, SD (3) Jones, JB (5) Jones, JD (5) Jones, BLUES (8)
SB (2) Jones, SD (3) BOS, Wilson, JB (3) Jones, JD(0) CHOCOLATES (6) SB (2) Jones,
JB (1) Wilson, JD (3) B. Choc, Jones, TORTOISE (18) SB (6) Wilson, SD (3) Jones,
JB (6) Jones, JD (3) B. Tort, Jones, STEELS (2) SB (1) B. Steel, Jones, JD (1)
Jones, GRAUS (5) SB (1) B. Gray, Jones, JD (4) Jones.

Soo Valley RBA -- 69-2-153

Sept. 7, 1969

Sioux Falls, S.D.

Judge: Robert Wallace

Sweepstakes Points: Arnold Alberts, 107, Darroll Bramhall, D & B. 28/ Curtis Conners, 18. Total Dutch (33) BLACKS (6) SB (1) Alberts. SD (2) BOB, D & B. JB (1) Alberts JD (2) disq. BLUES (9) SB (1) NM. SD (1) Conners. JB (4) NM. JD (3) NM. CHOCOLATES (3) SB (1) Alberts. JB (1) BOS, NM. JD (1) NM. TORTOISE (7) SD (3) NM. JB (1) NM. JD (3) NM. GRAYS (8) SB (1) Alberts JB (2) Alberts. JD (5) B. Gray, Alberts.

No. Cent. Ala. RBA -- 70-1-69

Sept. 12-14, 1969

Decatur, Ala.

Judge: John Cosby

Sweepstakes Points: Shady Brook Rbtry, 179. W.H. & Glenda Goodman, 59. Art. Hutchins 102. Bow-Berg Rbtry, 22. Lester Freeman, 5. Sandy & Karen Fisk, 70. Total Dutch (35) BLACKS (11) SB (3) Shady Brook. SD (1) B. Blk. Shady Brook. JB (?) Shady Brook. JD (5) Hutchins. BLUES (21) SB (2) Fisk. SD (6) Hutchins. JB (7) BOB. Shady Brook JD (7) BOS. Shady Brook. CHOCOLATES (3) SB (3) B. Choc. Bow-Berg. JD (1) Shady Brook

Los Angeles County Fair -- 69-2-61

Sept. 12-28, 1969

Pomona, Ca.

Dutch Judge: Don Guthrie

Sweepstakes Points: Leonard Weir, 1307. Sunset Rabbit Ranch, 594. Clipfort Rabbitry 739. Theo Stewart, 22. Triple S. Rbtry, 151. Total Dutch (176) BLACKS (29) SB (8) BOS. Weir. SD (6) Clipfort. JB (8) NM. JD (7) B. Blk. Weir. BLUES (26) SB (7) Clipfort. SD (8) Clipfort. JB (4) Sunset. JD (7) BOB Weir. CHOCOLATES (37) SB (7) Clipfort. SD (8) B. Choc. Clipfort. JB (10) Weir. JD (12) Clipfort. TORTOISE (28) SB (9) Clipfort. SD (4) Sunset. JB (6) B. Tort. Weir. JD (9) Weir. STEELS (30) SB (10) B. Steel. Clipfort. SD (7) Sunset. JB (6) Sunset. JD (7) Weir. GRAYS (26) SB (7) B. Gray, Weir. SD (7) Weir. JB (6) Sunset. JD (6) Weir.

Chattanooga RBA -- 70-1-21

Sept. 13, 1969

Chattanooga, Tn.

Judge: G.A. Burke

Sweepstakes Points: Jimmy Hillard, 370. Hugh & Nancy Barnett, 219. W.R. Griffity, 190. Robert F. McKenna, 144. Clyde R. Baker, 62. Francis L. Jones, 193. W.G. Frasier, 64. R.G. Barnette, 24. Al Cas Rbtry, 18. Total Dutch (92) BLACKS (39) SB (13) B. Blk. Hillard. SD (10) BOS. McKenna. JB (8) Hillard. JD (8) Hillard BLUES (21) SB (3) Griffith. SD (8) H & N. Barnette. JB (7) BOB. Hillard. JD (3) H Barnette. CHOCOLATES (18) SB (5) B. Choc. Griffith. SD (7) Hillard. JB (3) H. Barnette. JD (3) Al Cas. TORTOISE (12) SB (3) all by NM.

Texas Panhandle RBA -- 70-1-64

Sept. 13-14, 1969

Amarillo, Tx.

Judges: Art Nelson & Buck Lathar

Sweepstakes Points: J.C. Wilshire, 74. J.J. Scharnberg, 60. Rocking M. Rbtry, 16. Robert Berry, 85. Total Dutch (31) BLACKS (9) SB (2) BOB Wilshire. SD (1) Scharnberg JB (2) NM. JD (4) BOS. Wilshire. BLUES (4) SB (2) B. Blue. Scharnberg. SD (2) Berry. TORTOISE (6) SB (3) B. Tort. Wilshire. SD (2) Scharnberg. JB (1) Scharnberg. STEELS (2) SB (1) Berry. SD (1) B. Steel. Berry. GRAYS (5) SB 92) B. Gray Berry. SD (2) Berry. JB (1) Berry.

All States RBA -- 70-1-41

Sept. 13, 14, 1969

Holyoke, Co.

Judge: Dean Benker

Sweepstakes Points: Mike Beauprez, 124. Sweet Success Rabbitry, 702 Total Dutch (55) BLACKS (15) SB (2) NM. SD (1) Beauprez. JB (6) BOB Sweet Success. JD (8) BOS. Sweet Success. CHOCOLATES (21) SD (1) Beauprez. JB (15) B. Choc. Sweet Success. JD (5) Beauprez.

Mass. Fed. of R&CC Inc. -- 70-1-84

Sept. 14, 1969

Topsfield, Mass.

Judge: John O. Rod.

Sweepstakes Points: Paul J. Jurgelonis, 68. Total Dutch (14) BLACKS (8) SB (4) B. Blk. Jurgelonis. SD (1) NM. JD (3) BOS. NM. BLUES (5) SB (4) B. Blue. Jurgelonis. JD (1) NM. TORTOISE (1) JB (1) NM.

Kansas State Fair -- 69-2-67

Sept. 13-21, 1969 Hutchinson, Ks. Judge: Marvin Cummings
 Sweepstakes Points: L & L Johnson, 174. Robert Ernst, 159. Mar-Lo Rabbitry, 60
 Total Dutch (42) BLACKS (13) SB (2) L & L Johnson. SD (1) BOS, Johnson. JB (5)
 BOB Ernst. JD (5) Johnson. BLUES (14) SB (2) Johnson. SD (8) B. Blue, Johnson.
 JB (8) Ernst. JD (2) Johnson. CHOCOLATES (8) SB (4) B. Choc. Johnson. SD (2) NM.
 JB (1) Ernst. JD (1) Johnson. STEEL (4) JB (1) NM. JD (3) NM. GRAYS (1) NM.

Huntington RBA -- 70-1-9

Sept. 14, 1969 Huntington, Ind. Judge: Carlton Gaddis
 Sweepstakes Points: G & S, 233. R.D. Humbert, 52. D & S Rbtry. 39. Alan Miller, 50
 A.C. McKeeman, 52. Glen Summers, 38. Brown, 8. Carl Lehrman, 8. Total Dutch (43)
 BLACKS (20) SB (5) B. Blk. Goeglein & Shaw. SD (2) G & S. JB (4) G & S. JD (8)
 BOS. G & S. BLUES (7) SB (2) B. Blue, McKenna. SD (1) Summers. JB (3) McKeeman.
 JD (1) G & S. CHOCOLATES (7) SB (2) G & S. SD (2) G & S. JB (2) BOB. G & S. JD (1)
 G & S. TORTOISE (7) SB (4) B. Tort. NM. JD (1) Miller. STEELS (2) SB (1) B. Steel,
 McKeeman. SD (1) A. Miller. GRAYS (1) SB (1) A. Miller.

Eastern Dutch RFC -- 70-1-65

Sept. 14, 1969 Wilmington, De. Judge: Martin Roy
 Sweepstakes Points: Lockwood Star Dutch, 150. West End Rabbitry, 246. Warren
 McNamara, 320. Cranston Heights Rbtry., 181. Henry Smith, 165. Carl Docker Jr, 52.
 William Geitzenauer, 170. Frank Shutter, 184. Boyd Gannon, 222. Owen Yates, 107.
 Total Dutch (141) BLACKS (37) SB (10) BOB Lockwood. SD (6) NM. JB (10) Geitzenauer.
 JD (11) Geitzenauer. BLUES (23) SB (7) NM. SD (5) NM. JB (6) NM. JD (5) B. Blue,
 Lockwood. CHOCOLATES (41) SB (8) McNamara. SD (11) BOS. McNamara. JB (11) Gannon.
 JD (11) Gannon. TORTOISE DUTCH (18) SB (7) Shutter. SD (5) B. Tort. NM. JB (1) NM.
 JD (5) McNamara. STEEL (11) SB (3) NM. SD (2) Smith. JB (4) B. Steel, Smith. JD (2)
 NM. GRAY (11) SB (3) NM. SD (2) Yates. JB (2) NM. JD (2) B. Gray, Yates.

Ashland County Fair -- 70-1-57

Sept. 15-20, 1969 Ashland, Ohio Judge: Harold Guthrie
 Sweepstakes Points: Jack's Bunnies, 148. Larry Nixon, 123. Total Dutch (48) BLACKS
 (10) SB (4) B. Blk. Jack's. SD (2) Jack's. JB (1) Nixon. JD (3) Jack's BLUES (15)
 SB (4) NM. SD (3) NM. JB (2) Nixon. JD (6) BOB. NM. CHOCOLATES (11) SB (2) Jack's
 SD (1) Jack's. JB (4) NM. JD (4) Jack's. B. Choc. & BOS. SD, Jack's. TORTOISE (8)
 SB (2) NM. All shown by NM'S. GRAYS (4) Shown by NM's.

Richmond RBA -- 70-1-2

Sept. 18-28, 1969 Richmond, Va. Judge: ???????????
 Sweepstakes Points: Michael & Florence Zazzaretti, 118. E.D. Smith, 287. Owen Yates,
 148. Total Dutch (51) BLACKS (14) SB (5) B. Blk. Zazzaretti. SD (5) NM. JB (2) NM
 JD (2) Smith. BLUES (6) SB (2) Smith. SD (4) B. Blue, Smith. CHOCOLATES (10)
 SB (3) B. Choc. Smith. SD (4) Yates. JB (1) Yates. JD (2) Yates. TORTOISE (17)
 SB (5) Zazzaretti BOB. SD (7) Smith. JB (1) Yates. JD (4) Smith. GRAYS (4) SB (1)
 Yates. SD (1) Yates. JB (1) NM. JD (1) BOS. Yates.

Southwest RBA -- 70-1-82

Sept. 20, 1969 Arlington, Tx. Judge: Ed Storey
 Sweepstakes Points: Clyed & Doris Jones, 931. Roger Dove, 184. Maurice Etter, 386.
 Mrs. Alvin Dominey, 40. Total Dutch (119) BLACKS (30) SB (7) BOB. Jones. SD (5) Jones.
 JB (12) Etter. JD (6) Etter. BLUES (11) SB (2) Jones. SD (3) Jones. JB (4) B. Blue,
 Jones. JD (2) NM. CHOCOLATES (24) SB (3) Etter. SD (5) BOS. ETTER JB (5) Etter.
 JD (9) Etter. TORTOISE (40) SB (15) Jone. SD (7) B. Tort. NM. JB (10) Jones.
 JD (8) Jones. CRAYS (9) SB (1) Dove. SD (1) Etter. JB (2) Etter. JD (5) B. Gray, Jones
 STEELS (7) SB (3) B. Steel Jones. SD (1) Jones. JB (0) JD (3) Etter.

YOU CAN'T BEAT THE DUTCH

<p>COMPLIMENTS OF</p> <p>BARB & JIM WALKER</p> <p>Bar - J Rabbitry</p> <p>Columbus, Ohio</p> <p>4-70</p>	<p>DUTCH</p> <p>Black Blue Chocolate</p> <p>Andefer Rabbitry P.O. Box 1382 Melbourne, Florida 32901 Phone: 723-4008</p> <p>FRANCIS L. JONES</p> <p>5-70</p>	
<p>A.R.B.A. RABBIT AND CAVY JUDGE</p> <p>"DON" REID</p> <p>Route #1 Box 159 Lockport, Illinois 60441 Phone: 815-485-6517</p> <p>DUTCH - Black, Blue FLEMISH - Sandy, White NEW ZEALANDS - Reds, White</p> <p>CAVIES - (American) - All Colors</p> <p>9-70</p>	<p><u>DUTCH</u> <u>All Colors</u></p> <p>COOK'S RABBITRY</p> <p>Walt and Anna</p> <p><u>POLISH</u></p> <p>4910 So. 43rd Street Greenfield, Wisconsin Phone: 282-7454</p> <p>53220</p>	
<p>HAND 'N' HAND</p> <p>1144 E. Walnut Street</p> <p>Lancaster, Ohio 43130</p> <p><u>DUTCH</u> <u>All Colors</u></p> <p>4-70</p>	<p>HOLLY KNOLL FARM</p> <p>in SW Virginia & East Tennessee</p> <p>HAS</p> <p>Quality Blue, Black and Gray Dutch Selected for Fur, Type and Markings</p> <p>Allen, Barry and Robert McKenna 101 West Valley Drive Bristol, VA. 24201</p> <p>7-70</p>	
<p>WE ARE IN DUTCH!</p> <p>C JAY & DINAH MILLER</p> <p>303 So. 6th Street</p> <p>Kalona, Iowa 52247</p> <p>7-70</p>	<p>BLACK AND BLUE DUTCH! NEW ZEALAND REDS BLUE EYED WHITE POLISH</p> <p>From some of the best stock in the east</p> <p>ROBERT M. GAISER</p> <p>R. D. 2 Worthington, PA. 16262</p> <p>11-70</p>	<p>ROY FOX</p> <p>R. R. #6</p> <p>Cridersville, Ohio 45806</p> <p>11-70</p>

Black and Blue Dutch

EXCLUSIVELY

A. SEEMAN

411 Oakview Avenue

Joliet, Illinois 60433

4-70

RODNEY DANNEHL

LICENSED POULTRY JUDGE & A.R.B.A. REGISTRAR

Route #2, Box 325
Hugo, Minnesota 55038

FOR SALE

Black Dutch, Black & Blue Silver Martins, N.Z.W.,
Red Satins and English Spots

Buff Orpington Chickens, Rouen Ducks

7-70

JAKE'S RABBITRY

4845 - 33rd Ave. So.
Minneapolis, Minn. 55417
Phone: 612-729-0283

DUTCH - Black, Blue & Choc.

NEW ZEALANDS - White

SATINS - White

3-70

CAREFREE

(A friend of the Dutch)

NEW ZEALANDS - Blue Seal Reg.
stock

COCKER SPANIELS - temperament
first! Champ stock & studs

ENGLISH TOY SPANIELS - and Stud

PERSIAN CATS and Stud

Diane Christianson
2906 West 84 Street
Bloomington, Minnesota 55431
Phone: 612-888-1006

5-70

**Mc CUMBER
RABBITRY**

TOM and IRMA

Route #2 Jebany Drive

Ludington, Michigan 4943

D U T C H

All Colors

4-70

MIKE'S RABBITRY

426 Union Avenue
Bucyrus, Ohio 44820

D U T C H - All Colors

Bantams - Pigeons

Pheasants

COCKER SPANIELS

4-70

**NORTHLAND
RABBITRY**

Ron and Marilyn Hathaway

Route #2

Ludington, Michigan 49431

BLACK AND BLUE DUTCH

4-70

V É E RABBITRY

Velma & Elmer Paquette

DUTCH AND HAVANAS

334 Acacia Road
Santa Paula, Calif. 93061

Phone: 805-525-7260

Elmer Paquette - Judge and
Registrar

11-70

7-L BUNNIES

BREEDING - EXCLUSIVELY

CHOCOLATE DUTCH

STRICTLY FOR SHOW

Elmer & Jerrrie Plus (5) Lakatos

25631 Glendale

Detroit, Michigan 48239

313-537-2936

V I S I T O R S W E L C O M E !

11-70

BOYD GANNON

BLACK AND CHOCOLATE DUTCH

A few choice rabbits usual
for sale!

Effort, Pa., 18330

11-

compliments of

THE OHIO STATE DUTCH RABBIT CLUB

Mrs. Mildred Hand, Sec. - Tres.
1144 Walnut Street
Lancaster, Ohio 43130

3-70

CONNER'S RABBITRY

P.O. Box 74
Malmo, Nebraska

DUTCH-Black, Chocolate & Blue
NEW ZEALAND WHITES
GOLDEN PALMINGS

3-70

BLUE JAY'S RABBITRY
DUTCH - POLISH - SATINS

JAY WEBB

9535 S. E. 15th
Belleue, Washington 98004
Phone: 454-3598

3-70

D. B. RABBITRY

Mason City, Iowa

TOP QUALITY DUTCH

Black - Blue - Chocolate
Tortoise - Steel - Gray

Darrell Bramhall
1211 - 2nd St. N.W.
Phone: 423-5453

Dick Battleson
1640 N. Carolina
Phone: 423-4020

3-70

GORDOLYN'S MENAGERIE

GORDY, DORIS AND LINDA LEIBEL
3850 Beau-d' Rue Drive
St. Paul, Minnesota 55111
Phone: 612-454-2930

DUTCH - All Colors
NEW ZEALANDS - White and Black
MINIATURE SCHNAUZERS - Salt and Pepper - AKC
PERSIAN CATS - Blue or White - CFA, AFCA

DORIS LEIBEL, ARBA Judge and Registrar

12-69

DON UNRUH

DUTCH

Black - Blue - Tortoise

146 Kumquat Ave.
St. Paul Park, Minn.

Phone: 612-459-1197

1-70

Phone: 516-764-0620
517 Winsor Parkway
Oceanside, New York 11572

WARMHOLD'S RABBITRY

DUTCH

Blue - Black - Steel - Gray
POLISH - White, Blue, Choc.

BOOSTING DUTCH IN MINNESOTA

L. A. Bengtson

Box 213

Rollingstone, Minnesota 55969

12-69

"J" TOP

DUTCH and POLISH

Beagles - AKC - Field Trail

Long - Tailed Pheasants
20 Varieties Pigeons

JOE THOMAS POWERS

R.R. #2 - Box 103

Shakopee, Minn. 55379

Phone: 612-445-1264

3-70

AMERICAN DUTCH RABBIT CLUB

JESSIE WEINHARDT, Sec'y - Treas

NEW ADDRESS

12024 Pleasant Lake Road

Manchester, Michigan 48158

Phone: 313-428-8979

4-70

JACK'S BUNNIES

JACK WIREMAN, proprietor

5475 Seeman St. S. W.

Navarre, Ohio 44662

4-70

COOPER'S HILLCREST RABBITRY

SOME OF THE BEST IN THE MIDDLE WEST!

2601 Sharon Hollow Road

Grass Lake, Michigan 49240

4-70

R-V RABBITRY

(BREEDERS OF FAMOUS STRAINS)

DUTCH: Black and Blue

NEW ZEALANDS: Whites

TOY FOX TERRIERS - AKC Registered - Pedigree quality
breeding stock for sale.

RICKEY and VICKEY ANDREWS

Route #2, Box 11

Granbury, Texas 76048

4-70

JOHN L. NELSON

Breeder and Exhibitor

Famous Dutchens Bloodlines

of

Blues, Blacks, and Torts

Rte. #1 - Box 142 - B

Crete, Illinois 60417

4-70

GOEGLIN & SHAW

DUTCH FANCIERS

Black, Blue, Chocolate

Our Dutch have nice cobby type! We breed for color, marking and type that excels in having round heads, short ears, and nice round rumps. Nothing over 4½ lbs. used in our Breeding Program. National Dutch Show and Convention winners year after year!

Write your needs to -
6914 Autumn View Drive
Fort Wayne, Indiana 46806

4-70

L.W. SIMONSON

R. R. 2
Ames, Iowa 50010
Phone: 515-232-3318

DUTCH
Chocolate and Black

Strictly a Hobby

3-70

C. H. STEINBERGER

DUTCH
Blacks and Blues
(Dutcheng Foundation)

Also
Tans - Using imported English Black Bucks
Harlequins - Sometimes a few

P.O. Box 441 (D)

Storrs, Conn. 06268
3-70

SWEET SUCCESS RABBITRY

As a matter of policy
selling rabbits from the showroom or
from the rabbit hutch

PATRICK J. HERMAN
3500 Lafayette
Denver, Colorado

Phone: 623-8104

3-70

Compliments of

CLAUDE BENNETT

1136 4th Ave.
Terre Haute
Indiana 47807

3-70

Compliments of

DAVID PAUL

1718 E. Watrous
Des Moines
Iowa 50320

3-70

IOWA SMALL ANIMAL ENTERPRISE

Mice - Rabbits - Cavies

1720 So. 17th St.
Fort Dodge, Iowa 50501
Phone: 515-573-5761

BURKLEY EARLES - Judge & Registrar

(OPEN FOR ASSIGNMENTS)

3-70

ZENTNER'S DUTCH RABBITRY

Luverne, Iowa 50560
Phone: 515-882-3254

ALL COLORS DUTCH!

3-70

DEAN MILLER

Rte. #3
Mason City, Iowa 50501

Dutch - Silver Wartens
and Siamese Satins

Phone: 515-423-6033

3-70

THE
DUTCH
REPORTER

PUBLICITY ITEMS

Pedigree Books, 50 per book, with stub.....	\$1.25
"Ideal" Dutch Mats for use in having your stationery printed or for your ad.....	1.00
ADRC Official Emblem Mats, with word "member".....	1.00
Dutch Stamps for use on your correspondence and many other places.....	.01
Shoulder Patches, black only.....	1.00
Beautiful Dutch Decals, for your car window, Carrying cases, etc. each.....	.50
three for.....	1.00
Lapel pins, Anyone would take pride in wearing one of these, Gold with Blue Dutch or Silver with Black Dutch.....	2.00
1966 Special All Dutch issue of Small Stock Magazine, limited supply.....	1.00

FOR THESE ITEMS, WRITE TO: (NOTE NEW ADDRESS)

Mr. & Mrs. James Walker, 5959 So. Old 3C Highway, Westerville, Ohio 43081

YOU CAN'T BEAT THE DUTCH

America's Finest Rabbit

THE DUTCH REPORTER

Mrs. Doris Leibel, Editor
3850 Beau d' Rue Dr.
Saint Paul, Mn. 55111

BULK RATE
U.S. POSTAGE
PAID
MENOTA, MN.
PERMIT # 17

Jack's Bunnies 3-14-70
5275 Seeman St.,
Navarre, OH 44662

446