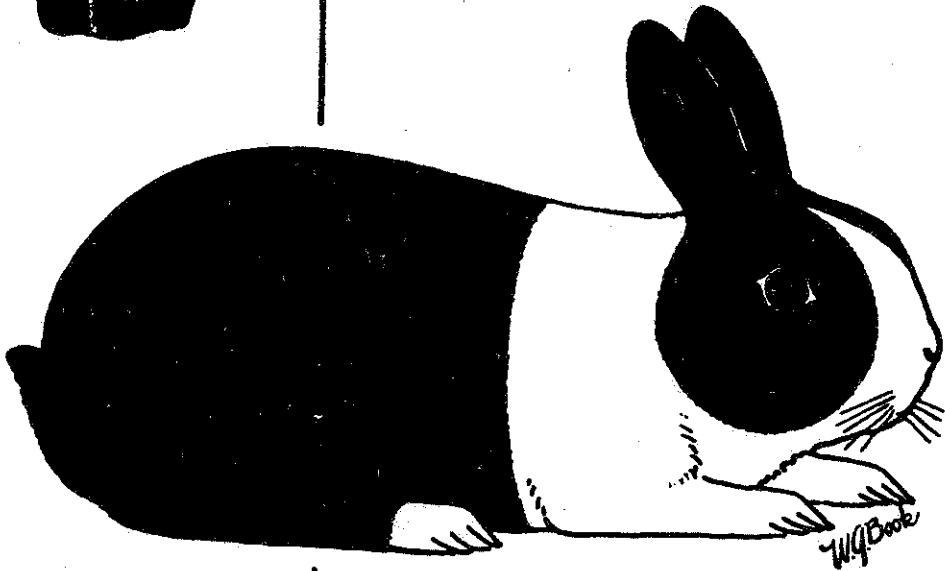


July-Aug 82



The Dutch Reporter



DEVOTED TO THE INTERESTS OF THE BREEDERS OF DUTCH,

America's Finest Rabbit



American Dutch Rabbit Club

July Aug 82

SAW RABBITRY

SCOTT & DIANNE WILLIAMSON

R.R. 2 Box 181
Champaign, Illinois 61820
Phone: 217-344-2751

QUALITY DUTCH

**DIANNES BLACKS
SCOTTS TORTOISE**

**Reed-Humbarger
Rabbitry**

MARKLE, INDIANA

DUTCH

All Colors
**Florida Whites
Havanas — Chocolates, Blues
and Blacks**

Dr. T. E. & Sandy Reed,
L. D. Humbarger — **Owners**

LIFE MEMBER
"You Can't Beat the Dutch"

The Lord Nelson Strain

JOHN L. NELSON
R. R. 3 — Box 1114
Crete, Illinois 60417

**BREEDER, EXHIBITOR
OF**

**BLACKS — BLUES
TORTOISE**

SINCE 1941

PAUL & LAURA CONLEY

DUTCH

Black - Blue

Chocolate - Tortoise

Steel - Gray

8353 SHELDON ROAD
ELK GROVE, CA 95624

the
TOMMY D STRAIN
BOB-1980 National Dutch Show
BOB-1980 Ohio State Dutch Show
BOB-1980 ARBA Convention Show

BLACKS & BLUES

Tom Dietrich
3462 Royal Drive
Columbiaville, Mich 48421
Phone: 313-793-7109



the HOP shop

George & Jean Schill

3923 New Texas Rd.
Pittsburgh, PA 15239
Phone (412) 793-9254



FINE DUTCH ALL 6 COLORS

Best of Breed

1975 ARBA Convention

ROGER GUETSCHOW

Route 1

Arlington, WI 53911

Phone 608-846-3708



**BREEDER OF QUALITY
DUTCH**

WARREN McNAMARA

ADRC

Booster and Supporter
Since 1955

ROUTE 2 BOX 36
REISTERTOWN, MD 21136
PHONE 301-833-2286

COMPLIMENTS OF
LARRY & DOREEN
and
"LARRY'S CHO CHAMP"



Ear #C1 Reg 6690K GC #5983
1st Jr Bk 1977 N.D.S.
BOB 1977 ARBA Conv.
BOS 1978 N.D.S. Ohio
ARBA JUDGE

EICH'S RABBITRY

Top Quality Dutch

FOR SALE

Black - Blue - Chocolate - Tortoise

Box 502 Dallas Center, IA 50063

Phone 515-992-3466

MICKEY & MAE WATTERS

1206 GUILLE ST.

ATHEN, TN 37303



**Black — Blue — Chocolate
Tortoise**
WE DO NOT SHIP

**DON & NELLE
BRADY**



**TORTOISE
DUTCH**

1461 Brittmore
Houston, Texas 77024
(713) 464-3780

The Dutch Reporter

VOL. 39 NO. 4
JULY - AUG.

PRESIDENT:

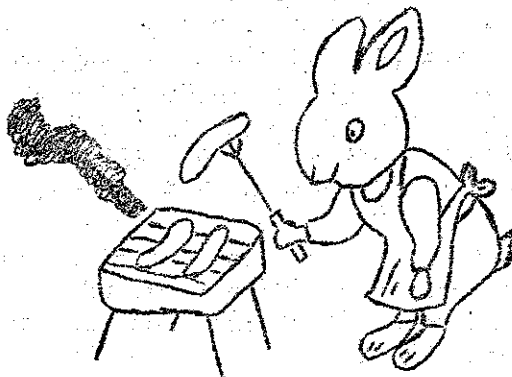
Scott Williamson '83
R.R.2, Box 181
Champaign, IL. 61820

VICE-PRESIDENT:

Jack Wireman '82
5475 Seeman St. SW
Navarre, OH. 44662

SECRETARY-TREASURER:

Norma Hart
190 North First Avenue
Coal City, IL. 60416



DIRECTORS:

Roger Eich '82 Box 502 Dallas Center, IA. 50063	William Geitzenauer '83 106 Harding Drive Washington, NJ 07882	Don Lovejoy '82 Box 694 Pomona, CA. 91769
Mickey Watters '83 1206 Guille Road Athens, TN. 37303	Tom Dietrich '83 3462 Royal Drive Columbiaville, MI. 48421	Wenton Carlton '82 4431 N Anna Park Rd. Tucson, AZ. 85705

The Dutch Reporter is published 6 times yearly on the first of February, April, June, August, October and December. Material for publication must reach the editor by the 15th. of the month preceding or it will not be printed in that issue.

ADVERTISING RATES

Single issue page	\$20.00	Yearly Breeder Cards:	
half page	\$10.00	Single	\$6.00
fourth page	\$ 6.00	Double	\$10.00

Judge and Registrar Listing: \$4.00 yearly Booster Listing: \$3.00 yearly
Dutch "For Sale" ad;---1 issue, Booster Listing Size: \$3.00

NOTICE

Unless advance arrangements are made, any articles reaching this office after the deadline, (the 15th. of the month preceding) will not be printed in that issue due but will be held over until the next Dutch Reporter.

Final ballots will be mailed by August 1st. Please exercise your right to vote. The American Dutch Rabbit Club belongs to you, the membership, and can only be as serviceable, competent and sound as you want to make it. Be an active member, get involved, and take part in this outstanding organization. When your ballot arrives, vote it as you wish and mail it back to the Election Chairman promptly.

VOTE

VOTE

VOTE

VOTE

VOTE

President's Message

Summer has finally arrived in central Illinois bringing with it it's blast of hot humid air. Remember the 4 basic principles to keep your rabbits cool.

1. Keep animals out of the direct sunlight (supplemental shade works well)
2. Insulate the roof of your rabbitry or rabbit hutches
3. Provide plenty of clean, fresh water daily
4. Allow for draft-free air movement

The more effective precautions you can take against the heat, the better your rabbits will do for you at the fall shows.

Since the fall show season is rapidly approaching, it is again time to plan your show calendar. One of the best ways to promote our breed is to show it off. So let's all be "show-offs" and keep the number of quality Dutch high at the ADRC sanctioned shows.

Another way to promote Dutch is made possible by our hardworking publicity chairpersons, Al and Barb Butler. They have put together publicity items second to NO other specialty club. The newest of these items being a very attractive lapel pin. The pin comes in three colors: black, blue, and chocolate; cost-\$2.00. Al & Barb have also been able to get the ADRC patches in these same colors. These two new items will not only promote our breed but enable us to show off at least three of our beautiful colors. With the large variety of quality publicity items now available, you may want to consider the use of these items for show specials. Consider not only the durability of these items, but also their functionality and usefulness not to mention the promotion that can result as we 'advertise' our breed.

The ADRC annual election of officers is rapidly approaching. I would like to request that each member take the time and opportunity to vote. This is our organization and everyone helps make it successful as well as progressive. So please take the time and effort to mail in your vote. For the cost of a stamp you can help shape the Dutch Club of tomorrow.

The final item of importance for this issue's president's message has to do with youth. I truly appreciate the help and advice I received while growing up from the Dutch people I am proud to call friends. The experiences and interactions I had and still have with Dutch folks make glad I chose Dutch. The man who sold me on Dutch (in more ways than one) is Mr. Dutcheng himself, Tom Shufflebotham of Valparaiso, Indiana. I grew to respect and admire Tom as I have many other Dutchmen/women. The beauty of the people who raise Dutch is that they are ready to give freely of their time and advice to help another breeder get started. Youth in Dutch need the support and encouragement from all of us who have the experience to offer sound advice. A policy which you may want to establish is to offer a one year free youth membership to a potential youth member with the purchase of breeding stock or to those young people who exhibit a genuine interest in Dutch. At \$5.00, the membership is a real bargain and may help sell another member on a long life with Dutch. If you have any input on developing and promoting an active youth program, contact the man I am proud to call both father and friend, Wilbur Williamson, P.O. Box 515, La Porte, Indiana 46350. With the proper reinforcement, the new generation Dutch breeder will be around for a long, long time.

KEEP YOUR HUTCH FILLED WITH DUTCH! !

SCOTT

FROM THE VICE PRESIDENT

Hello again to Dutchland. Here's the same old line we run in to each year at this time. Mark your ballots and vote! Let's try and get a 50% turn out this year. It's your club so why not just pick your choice and try voting for size? May feel good to give it a try.

Don't forget to get those does bred for the National Dutch Show in Ohio in '83. Save that weekend for the Dutch-May 6-7 of '83. We have big plans for you. Don't forget your specials and ads. Send them to me or Al Butler. Full page: \$20.00; ½ page: \$10.00; ¼ page: \$5.00; breeder and judge listing: 4 lines \$3.00. Also, we have a booster ad, name, address and color of Dutch or phone number for \$1.00. Take your pick and send it in now lest you forget.

Ohio news----Larry Nixon was our "Dutchman of the Year" in Ohio for '81. Congratulations to Larry as he is a fine booster of our Dutch, and there when you need him.

Hey! How about that idea you were thinking about for new members but forgot to send in? Who was thinking of having the National Dutch Show for '84. It may sound early but you can't put one together overnight.

Keep trying for a good one and I will too! See you at the shows or when our trails cross.

DON'T FORGET TO VOTE ! !

Jack

SECRETARY'S MESSAGE

It doesn't seem like it's already time to publish the July/August issue of the DR. Wasn't it just a few days ago that the last issue was mailed? I find it hard to believe that the time has gone by so quickly! You know, it won't be long and we're going to have to start preparing for winter. This is also how time passes when you don't send in your ballot just as soon as you receive it. We sometimes have a tendency to put it aside and our vote never gets cast. Don't let this happen! Keep a stamp on hand and as soon as your final ballot arrives---vote it, stamp it, and put it in your return mail.

Don Brady regrets that he will not be able to accept the nomination for ADRC Director at this time so the next in line was Wilbur Williamson of Indiana, who has accepted and whose name will appear on the ballot. Ballots will be in the mail by August 1st.

Seems as though my vacation is going to get off to a late start. Our son was chosen to play on the All Star Team in the District Baseball Tournament so vacation will have to take a back seat. We're quite proud of him and feel that the delay is well worth it.

This office has been quite busy issuing sanctions. A ribbon and rosette order was placed the end of March for enough to sweepstake 200 open shows. Our old supply was exhausted and some sanctions had to be sent out without the new ribbons and forwarded later. You will note by the quarterly report that 136 open sanctions were issued in April/May and June and I've issued 17 to date for the month of July. This, along with the ones that had to be sent out to shows missing the ribbons, leaves me with enough to sanction 25 more shows.....until I place the next order----which will be very soon. The ADRC also has B.O.B., B.O.S. and

continued.....

Secretary's Message continued.....

Best of Variety ribbons that are available to youth ADRC members at ADRC youth sanctioned shows. Support the Youth----When you write for an open sanction, remember to include \$5.00 and obtain one for the young people also.

ADRC new youth members have really been coming in. Since my first entry in any book, since I took over this office, I have issued 73 new youth memberships. Out of these 73,----42 have been issued since the 1982 N.D.S. Not too bad I'd say! We should all feel a might proud of our Youth Committee as I'm sure they took a tremendous part in promoting these memberships.

We've been doing our best to keep ourselves and our Dutch cool. 2 new exhaust fans have been added in the rabbitry and it seems to be a really big help! We've now gotten all of the materials needed to build 80 new holes complete with new drop pans. All we're in need of now is the time! An extra 8 hours added on to each day would definitely be of some help to alot of us.

You will find, in this issue, the final top 3 placements in the ADRC Sweepstake Standings for each state, along with the final top 20 in the nation for the 1981-1982 Sweepstake Year. Congratulations to All!

Start planning your breeding program to get thoseJrs. all lined up for Canton, Ohio and the 1983 N.D.S. We'll see you there!

Norma

DECISIONS

By: Director Geitzenauer

One of the biggest questions asked in new breeders itinerary is what do I keep out of a litter? Some of us older breeders have asked the same thing of ourselves many times.

The first question that you must ask yourself is what was I looking for when I bred the pair? If you just threw two together without reason, you are not much of a fancier. Even though every Dutch has it in them to have perfect anything, you cannot just throw 2 together hoping to come out with the perfect Dutch. Occasionally they will come out well but this is by far the smallest minority of OBTAINING SHOW STOPPERS. If, for instance, you have half stops on most of your herd and continue to breed these together you will end up with a strain of half stopped Dutch. You must either purchase a third stopped Dutch (preferably a buck) or save those one or two out of your litters that has good stops. This is just an example but most herds are "blessed" by one major fault and we all try to get rid of it by the above method. If your herd has 2 or 3 major faults with most of your stock, pray for a miracle! As all of us have found that nothing comes easily.

The preferable way to start is to buy stock with no faults, or minimum faults. Since this is not feasible to all but the millionaire we get the best we can for our available money, preferably one fault animals. Even so, these quite often run into 2 or 3 Andrew Jacksons from established herds.

Getting back to our original question, the answer must be what was I looking for to help improve the original stock? If you did not get any with the pair but one of the parents have what is desired, save the one that is either the closest or opposite to what is desired. But while you're doing this, do not ever save one with a genetic disqualification no matter if it has the desired point or not.

continued.....

DECISIONS, ...continued

You have to be aware even though it looks easy to win that trophy, it normally takes alot of thought, two to three years of heavy culling and a little help from up above.

CARE AND MANAGEMENT OF A YOUNG DUTCH STUD

By: Scott Williamson

Many articles have been written about technics in managing and feeding a herd of Dutch rabbits. A novice to the Dutch fancy may feel at a loss when trying to condition their stud for show. Every "die-hard" Dutch breeder has his or her own secret formula for conditioning their rabbits but it all boils down to one single factor -- MANAGEMENT.

Management is a road term which applies to purchasing, feeding, breeding and housing of the animal. Let's start at the beginning. Purchasing breeding stock is one of the most important steps in the success of a Dutch stud. Cheap breeding stock is a poor substitute for quality stock. What is quality breeding? Price does not equate quality. My advice is to join the American Dutch Rabbit Club and read as well as digest the information printed in the Dutch Reporter. Information such as articles and show reports should be analyzed. How successful and consistent is a rabbit breeder in good, stiff competition? Spend some money to travel and visit rabbit breeders to learn how good of managers and breeders they actually are. Observe how the rabbits are kept, herd health and records maintained within the herd. The history of the prospective breeding stock should be discussed between the buyer and seller. If the decision is made to buy, do not back down because of price. Most Dutch breeders like to get people started right in the Dutch fancy at a reasonable price.

DO WE NEED TYPE?

By: Bill Geitzenauer

After visiting some rabbitries this summer that I have never visited before, I find a gross neglect in breeders when culling out their litters. It seems that markings must be the name of the game. Few had the notion to look for type as well as markings. I have seen some 6 week old youngsters eliminated because of a short stop with the well marked gross type Dutch saved for breeders and show. It is criminal to breed for markings only. How many times have we seen a good typed Dutch placed over the well marked poor type with a lot of breeders talking that the judge is no good.

But wait! Perhaps the judge is wrong by placing markings over type. Now how many points are on type? Checking the standard, there are exactly 27 on type while markings have 50. Of these 27 type points, (15 on body type) if you eliminate eyes (2), ears (2), feet and legs (2) and tail (1), you now have 20 points left. These are now: head (5) and 15 on Body type. This means that:
Head type: (5)
Body type:(15)

So we arrive at type equalling 20 and markings 50. Is it no wonder that the average Dutch breeder is saving the well marked Dutch with pinched hindquarters, snipey head, flat back with constant width from the shoulders on back towards the tail. Now what is a judge supposed to do? In training they were told that most breeds, type was supreme, and to pick a poor typed specimen just sticks in their craw. It is no wonder that judges, when picking Dutch, continually are pushing
next page.....

DO WE NEED TYPE,...continued

them together to give a semblance of having some type when they are well marked. This then satisfies the exhibitors who say "Good Judging" !

In the not too distant future, we will have to address this problem as well as the problem of condition and weight.

Is it possible to have 150 points on a Dutch? Suggest the membership should do some thinking on this. I for one do not like change, and still resist the half stops to third stops when so many life's were poured into developing half stops. Well, this is food for thought.

Hopefully this will help you realize the quandry some judges are in and why some of us old timers still breed for type first, then markings.

What Ever Happened to Hershey's Chocolates?

By Dan Rohrer, Jr.

Some years back my son David did a speech for a 4-H public speaking contest entitled "How Hershey's Chocolates Helped Me Grow" and it was subsequently published in the Dutch Reporter for the subject was his original chocolate doe purchased in 1972 as the start of his 4-H rabbit project. Little did we realize at the time what Hershey would lead to.

Since David's article was published it has given us a lot of pleasure from time to time to see other writers refer to their chocolate does which were named Hershey after the one in David's article, and several people have asked whatever became of Hershey?

Hershey celebrated her 10th. birthday recently with her usual ration of pellets. She is the "Queen-Mother" of Rohrer's Rabbitry and will occupy that position of honor for the rest of her days. Despite her age she has retained a rather firm body type and has never developed a dewlap. At the age of 7 she kindled an outstanding doe which placed 5th. at the National Dutch Show in '80 in very stiff senior chocolate doe competition. This doe was registered as "Lil Hershey" and qualified for grand champion during her show career.

While we're fortunate to still have our original, there will always be a Hershey in Rohrer's Rabbitry as a tribute to the little mismarked doe purchased in '72 for \$4.00. In considering the pleasure obtained from our Dutch fancy as initiated by Hershey's purchase, her value today could not be expressed in monetary terms. We hope all of those other "Hersheys" out there have brought the same joy to their owners.

Editors Note*

The article printed, "DO WE NEED TYPE", by Bill Geitzenauer, was written after conversing with three well known judges and receiving their thoughts in regard to type on "Dutch".

The thing to do with good advice is to pass it on. It is never any good to oneself. ----- Oscar Wilde

DIRECTOR DIETRICH

The summer is swiftly going by. In Michigan we have had rain til it is coming out of our ears.

George Strahler and Joe Frizzell have visited recently. Did not get a chance to visit as much as I would have liked to because of job commitments.

In raising Dutch, I often get the question, How do you go about building a good Dutch herd? I usually reply, "get with some long established Dutch raisers who show on the National level, get some decent animals from these people and also the advice each one has to offer. Then go out and raise some Dutch and learn by your mistakes." Continually cull animals according to the Dutch standard and remember you are raising a marked breed so when you get a few show placers, or winners, you are doing good. You will learn the ins and outs of rabbit raising by doing it. Dutch are not an easy breed to put everything together on, but when you do, you know you have accomplished something.

YOUTH NOTES

MONICA HARDT; ARIZONA

Hi! My name is Monica Hardt and I have been selected as Chief Reporter for the Dutch Youth Club. I need the help of youth members in Districts other than District 2. If you wish to be a reporter in your district, please write me at: P.O. Box 356 Holbrook, AZ. 86025
I would appreciate the help. Thanks!

JIM EIMERMACHER; OHIO

I am very pleased that the ADRC has a youth program. I think the committee to get the youth program going did a GREAT job. I think the new youth program is a tribute to what hard work and good management can accomplish. I have enclosed my renewal and I firmly believe that the youth membership in the ADRC will increase greatly.

Ed: I think your prediction is right. I've really had the youth memberships coming in. I think our youth committee deserves a BIG HAND! Norma

LETTERS

I would like to congratulate all of the new members on joining the ADRC, and wish them lots of GOOD LUCK and SUCCESS in the future.

An Old "Dutch Man",

Al Seeman

VOTE

VOTE

VOTE

VOTE

VOTE

LETTERS,.....continued

VICKIE HILL; WASHINGTON

Dear Dutch Reporter; For the past few years I've been showing chocolate and black Dutch. My rabbits do OK, although I do not prepare them. I often see people rubbing their animals with cloths or talcum powder before they get to the table.

What or how should I prepare my animals for a show? What would you suggest as far as feeding, posing, grooming, health, etc.?

I would really be grateful for your response. P.S. Enclosed is a check to continue my membership.

Editor: Vickie,--It seems that grooming and preparation for a show starts in the rabbitry. Keeping the rabbits' hutch clean, so there are no stains on the rabbit, is of primary concern. Handling the rabbits daily, the way a judge would, checking the teeth, toe nails and rolling them over to check the undercut and stops and then posing them will help them to get used to the judges' table. Rubbing the rabbit, everyday, from the head towards the tail, and periodically from the tail towards the head, will help to get alot of the dead or loose fur out so the coat will look healthier. This can also be done with a damp cloth.

We have found that our rabbits stay in better condition when we feed a lower protien feed, and add some "goodies" once in awhile. Rather than feed an 18 or 19 percent protien feed with 16 percent crude fibre we use a 17 percent protien with 13 percent crude fibre and 2 percent fat, and add some steam rolled barley, rolled oats or a little calf manna, (just mixing it in with the feed) once in awhile. We also use "Aqua-Vite" in our water. This is a type of vitamin supplement and it seems to help our rabbits coats look "slicker" and "healthier".

Breeding your rabbits when they are in good, healthy condition is better than breeding them when they are moulting or sickly. The bottom line would be GOOD, SOUND, HEALTHY facilities for the animals,--attention, and lots of T.L.C. from the owner. Possibly we can get some of our readers to write in on how they prepare their animals. Any answers pertaining to Vickie's above question will be published in the September/October issue of the DR. Norma

Nomination Appreciated
By Dan Rohrer, Jr.

I felt honored when reading the results of the A.D.R.C. nomination process and realized that I would be on the election ballot for Director. To be so selected by your fellow breeders is a tribute even if you don't eventually get selected.

If elected, however, I would contribute to the best of my ability to keep the A.D.R.C. one of the top specialty clubs in the nation. I feel that our club has capable leadership and is making great strides. I'll simply say that if elected I will step into the harness and do my share of pulling.

continued next page.....

Dan Rohrer, continued.....

My rabbit interest is exclusively devoted to the Dutch fancy. We have a small but competitive herd of Dutch bred primarily for personal pleasure, keeping in mind the improvement of the breed. Sale of stock is of secondary importance conducted primarily to keep the existing herd to manageable proportions.

I have served as the Eastern Dutch Fanciers Club Publicity Director for the past 4 years and have published their newsletter quarterly over this time period. I am currently the E.D.R.F.C. Vice-President, previously having served as a Director. I am currently serving as chairman of your A.D.R.C. Education Committee and try to contribute to the Dutch Reporter as frequently as I feel I have something for the benefit of the membership.

As it was a 4-H rabbit project (my son's) that initiated my Dutch breeding I have retained a strong interest in the youth programs and have served for a number of years as a 4-H rabbit club leader. I am currently the Maryland A.R.B.A. representative.

I advocate no particular changes and am happy with our standard with the possible exception of feeling there should be a 4½ pound weight limit for juniors. After all, should a junior be more than the ideal Dutch weight?

I would appreciate your support in the election but the choice is that of the individual member. I encourage all eligible members to have a voice in the A.D.R.C by exercising their voting rights. That's the only way to keep a strong, responsible club, regardless of who you vote for. If you support me, many thanks. If you decide otherwise, then I'll support them also by continuing my efforts to keep the Dutch breed on top. They're such great little rabbits with such great breeders that we owe it to them.

EDITOR: I received some letters concerning the proper color for "Gray" Dutch. Below you will find one of those letters. I wrote to a few of our judges, along with a letter to Al Meier, Chairman of the ARBA Standards Committee, and asked them to voice their opinion. You will find these letters printed also.

After reading the following articles, if you feel that there has been something left unsaid, please say it by way of the Dutch Reporter. NORMA

ANDY BARTON; CARROLL, OHIO

As you will see, my writing leaves much to be desired, but here goes.

Last weekend I attended the Ohio State Dutch Club Show held in conjunction with the Lorain County RBA, with the Dutch being judged twice.

During the judging for the Ohio Dutch, every Gray that was entered was disqualified for being the wrong color, with the judges remarks being brown ticking instead of Gray. After discussion, it was stated a Blue-Gray was more the right color instead of what we have now.

When the Dutch were judged in the afternoon, all Gray were OK, with a Gray doe going right down to the end for Best Opposite Dutch before losing to a Blue. I don't want this letter to sound as if I am trying to criticize either judge, I just am trying to get the Gray color clarified.

continued next page.....

Andy Barton, continued.....

In the standard it states the Gray Dutch should have black lacing on the ears, which leaves me to believe the ticking on Grays should be dark. A Blue-Gray has blue lacing on the ears.

I want to make it clear I am not saying what the right color is, I don't really know at this point, I thought maybe somebody could clarify it.

This is what makes the Dutch so interesting, there is always a challenge.

I think the Grays are as beautiful as any color we have, but don't know if I have been working for the wrong color or not.

Thank you for hearing me out and hope you can read and make this out.

P.S. If it was right to disqualify the Grays during the Ohio Dutch Show, then the Gray that was B.O.S. at the 1981 Convention would have been disqualified ---to show you what I mean.

GRAY DUTCH AND OTHER THINGS

By Al Meier

In response to a request from the Dutch Club Secretary, as a consequence of two letters commenting upon the disqualification of Grays by one judge and the passing of all Grays by the other judge at this combined show. I'm writing what I hope is a clarification of Gray color.

Before I get into a discussion of color I'd like to question, "why no protest against one or the other?" It's inconceivable that both could be right.

One of the problems is that there are probably no more than a half-dozen people who realize there are two definite Grays, with shades in between, and our color description is an ambiguity which tries to combine some features of both.

The BROWN GRAY - preferred - has a belly color showing on the surface of the undercut and has an agouti pattern body color.

The PALE GRAY has no agouti patterned hair shaft; the top color merges into a pale slate base color - There is no definition. Nobody in England intentionally breeds Pale Grays, they are an aftermath of Steel and Gray breeding, but, are shown. NOTE! The belly color is white over a pale slate undercolor the same as our standard calls for.

Printed below are color descriptions for Steels, Brown Grays and Pale Grays as taken from James Read's book on Dutch. James Read was an old friend of Tom Shufflebotham and was, for over sixty years, President of the U.K. Dutch Club.

(Note, the Steel is not an agouti)

STEEL GREY ___ Dark Steel Grey merging to pale slate blue in the undercolour. The whole interspersed with black guard hairs. The medium bright and evenly ticked shade is the one to aim for and the extreme tips of the full will be tipped with steel blue or grey. The mixture to carry well down the sides, flanks, hind feet. Belly colour will be a lighter shade varying with the top colour; underside to tone with the belly colour. Ears to match body.

continued, next page.....

Al Meier, continued.....

BROWN GREY Slate blue at the base followed by a band of yellowy orange then a black line, finishing by light or nut brown tips to the fur. The whole interspersed by black guard hairs. That is the impression gained when the fur or the Brown Grey is parted. The general impression should be light or nut brown on ears, cheeks, body, hind feet and top of tail, the while ticked with black hairs. Belly colour and eye circles (small as possible) bright straw colour. A lighter shade permissible under tail.

PALE GREY Top colour biscuit, carrying well down and merging into pale slate at the base. The whole interspersed with black ticking. The general impression should be biscuit ticked with black on ears, cheeks, body and top of tail. Belly colour white with pale slate under-colour. Eye circles white but non-existent or small as possible. Body colour should be present on hind feet. Underside of tail white.

I would suggest the American Dutch Club use the descriptions of the steel and the brown gray with the notation following the gray color description: "lack of definition to be considered a fault. White surface color on the undercut to be a fault but lack of undercut undercolor to be a disqualification."

I would further suggest that "Brown" be substituted for "Hazel" in eye color; Hazel is a rather indeterminate color. For blue eye color I would suggest: "Blue-Gray" to avoid confusion with the Blue of B.E.W.'s. We determine eye color by the color of the iris.

A further question raised was the full neck being accepted despite the standard calling for a disqualification for: "the absence of definite markings, (except hair-line between the ears)."

Full and ragged necks have been accepted for so long that to make a full neck a disqualification at this stage would make for the single most common cause of disqualification in the standard. This would impose a needless hardship on breeders; I always tried for clean necks, and feel a note should be added under "neck" to note that it is an exception to the absence of any marking disqualification, but a full, dirty, or ragged neck marking is a fault. Better yet, remove the disqualification for any missing markings - we have individual disqualifications fitting most markings. I can think of marking faults - not disqualifications -- that I would not use in breeding before some minor disqualifications.

As a further suggestion; since it's nearing the time for standards revisions:

- 1.) The stops presently call for : "white markings from toes to a point one-third way up the hocks." It should read -- "From toes to a point one-third of the length of the foot as measured to the hock." The hock is the heel or the rabbits foot -- white over the hock disqualifys.
- 2.) Split-Stops -- Some problem for some to interpret. Should possibly read: "When the body color runs between toes of hindfeet connecting with the body color of the foot pad."
- 3.) The Dutch, at present, has no points on "condition." I'd suggest points be stolen from some sections. I think head and ears could be combined for six points, one point on eyes, describe "feet and legs and tail" with "tyand save those three points. I'm not making firm suggestions; just a way of putting at least five points, or more, on condition. (As an example, check the English Spot standard)

Color Me Gray!

By Scott Williamson

Judging from the number of ideas I jotted on gray color prior to writing this article, we could be dealing with a small book. However, I will try and condense my views and interpretations of proper gray color.

The first reference that should be cited is of course the Standard of Perfection, since this book is responsible for the information available to all judges. I, therefore, refer to pages 86-87 in the Standard or pages 59-60 in our Dutch guidebook for the written definition of gray color. The dictionary defines gray as a color made by the mixing of black and white pigments. Many people who don't raise rabbits look at our Blue Dutch and call them gray while other people see a chinchilla colored rabbit and consider that to be gray. We have all these different ideas about what gray color could be or should be, it's no wonder gray breeders can get confused.

There are 13 points allotted for color on our belted beauties. Consider this: White is also a color, since approximately 1/3 of a Dutch is white, there is about 4 of the 13 points that should go to the white areas. This leaves 9 points to be considered in our different varieties. The most any judge could fault a Dutch on the variety color is 9 points out of 100. Too many times, judges lose site of the point distribution on Dutch. I have seen some judges make their decision on condition when there are 0 points on condition according to the Book of Standards. The Standard must be relied on for a more consistent or uniform job of judging. The "book" should always be face up on the judge's table opened to the page of the breed he/she is judging. Good judges rely on the use of this book for reference if needed while evaluating the animals. Trouble can begin if personal bias or prejudice enters into the decision making process; to coin a phrase, "Judge by the Book."

In the Standard of Perfection a good attempt has been made to describe gray color. If you refer to this color description you will see the word slight used to describe the amount of sandy tinge which is permissible. Slight is the key word here with a dictionary definition of small in amount or extent. Therefore, an excessive amount would not be permissible but the question becomes apparent of where we draw the line or distinguish between slight and excessive. It is my opinion that unless we incorporate the words excessive sandy tinge as a disqualification under gray color description, any animals with this should only be faulted.

Other color description problems occur with grays. Belly color is probably the next most common fault. The ideal belly should be white over slate blue. This would make the undercut indistinguishable unless you blow into the fur. According to the standard, the undercut can show, which means that there is a definite break in the white of the chest and that of the belly with the belly color being more of a creamy or off-white shade. Comments on ticking are often neglected. The ticking should be uniform or even throughout the gray portion of body color. Ring color must also be considered, as good ring color would, uniform and even. Too many times I have seen grays with the ticking but not the uniform ring or visa versa, and at times even both are at fault. If these grays are used in breeding steels, poor colored steels can result with patchy steel tipping (dark backs, etc.). If brassy grays or grays with too much sandy tinge are used in the steel breeding program, poor colored steels can result with a brassy tinge to the steel tipped guard hair.

The gray color often seen on the lower hip is what may be more near the standard requirements. Although I think we have a long way to go to get the

continued, next page.....

Color Me Gray, continued.....

color on our grays ideal, we can make faster progress if more of us take the challenge of raising this beautiful variety.

The gray Dutch was the original color of Dutch, so we have had plenty of time to improve the color? ? ?

THE "GRAY" DUTCH

By Al Butler

Each time I judge the Dutch rabbit I wonder, "What have we let happen to our Grays?" Are we letting the sandy tinge, which is undesirable, take over and give us a brassy or sandy colored rabbit or are we trying to see how far the judge will allow us to go before we start going back to our standard and put the GRAY DUTCH back on the show table?

Let's look at our standard and read it for a minute: "A uniform, ticked, medium dark shade of gray, agouti coated, carrying distinct bands which are visible when blown into: under color next to skin to be slate blue. Fur to carry a distinct ring color when blown into. SLIGHT sandy tinge permissible. Ticking to be carried evenly over cheeks, top of body, sides, down the outside of rear legs and ears. NARROW black lacing on ears desirable. Eye circles of white or very light gray should be NARROW and INCONSPICUOUS. The belly color for Grays should be a white surface color with slate blue undercolor extending from inside of rear legs over belly to the undercut. The undercut showing on the surface color of the belly is permissible, when not showing on the surface color of the belly it is determined by blowing into the fur and is the point of junction where the slate-blue undercolor on the body meets the white fur covering the forelegs and the chest. The undercut should be a continuous line with the GRAY TICKED saddle to form a perfect circle around the body, the same as other varieties. The tail color of Grays should be; top of tail to match body color, under-side of tail to match belly color. Eyes: Hazel Faults: Brassy tinge, white hairs.

Now let's look at what we have just read: Point #1 - The ticking on a Gray is to be Gray. There is no question about this as it is spelled out very plainly in the latter part of the color description, therefore, when the ticking has a brown or brassy tinge or cast, we no longer have a gray Dutch, but an AOC, and they were taken out of our standard several years ago.

Point #2 - The only place we can then allow the SLIGHT sandy tinge is on the TOP OF THE SURFACE COLOR OF OUR FUR. Any place else is not allowed.

Point #3 - The Belly: The belly should be white with slate blue undercolor. (A) As the surface of the belly darkens, it approaches the Steel-Gray color, but since it is not dark normally, but only a medium shade, we have a dark Gray or a light Steel. The darkened color which is on the belly, tends to darken the color over the entire animal.

NOW! The judge has a well marked Dutch entered in the Gray class. It has a very nice conditioned coat and is very firm of flesh. BUT - the ticking is not gray but brassy, along with a brassy tinge to the surface color of the fur. The judge is now between a rock and a hard place. Does he become Mr. Nice Guy, make the breeder happy and place the rabbit, perhaps make it Best Of Breed or Best Opposite, or does he fault it slightly because it is a very nice animal and make it first in the class and Best of Variety and stop there, or does he say "I have

continued, next page.....

Al Butler, continued.....

to put this animal off the table either Unworthy of an Award or Disqualify it because it is the wrong color." WHAT WOULD YOU DO?

BARB BUTLER: Ohio

I'd like to comment on the article written by my husband on the subject of the "Gray" Dutch.

From a judges viewpoint we have a Standard of Perfection to follow when it comes to judging any breed of rabbit approved by the Standards Committee. These are guidelines for the BREEDERS as well as the JUDGES. The Standards Committee of the breeds works with the ARBA Standards Committee in developing the proper wording for the breed standard.

The ticking on most Gray Dutch is not Gray. It's brown or brassy colored.

A little over a year ago, I placed Unworthy of Award, a whole group of "Gray" Dutch for not having the proper colored ticking. This action did not stir up the controversy that Al has because it was a small show and only one or two breeders. Since that time, I've lost my courage and have placed the "Gray Dutch with comments on the ticking being any color but gray."

When judging Silver Martens, or the Marten group in Netherland Dwarfs, the ticking is to be white. Anything else is disqualified. Why are the Gray Dutch different?

If the "Gray" Dutch Breeders want to keep the rabbits they have without the gray ticking, and raise the ones with the brown or brassy ticking, they must either change the name of the color of the Dutch they now have, or change the Standard to correspond with the rabbit they are now raising.

Be honest, "Gray" Dutch Breeders. Take a close look at the ticking on your "Gray" Dutch rabbits and see what color you're raising...: "GRAY", BROWN OR BRASS??

GRAY COLOR

By Wenton Carlton

Good Gray color is very hard to get. I am not an expert on gray color, but here goes my ideas. I think the "Gray Dutch" is the most beautiful of the six colors. It is a very hard color to get, and keep. Here is what I try to produce on my Grays.

I want a dark shade of Gray color, as the Gray Dutch is an agouti colored animal, and this color should go all the way down the shaft of each hair. If you get a good dark shade of gray you will form a band which is visible when blown into. Next to the skin I want a slate blue color. The dark shade of Gray ticking on the surface color should be even throughout the color portions of the Dutch. These shadings of the gray colors makes your gray Dutch a very attractive animal. You want to avoid too dark, which is black coloring, and by the same reason, avoid a very light gray color.

continued, next page.....

Gray Color, continued.....

If you breed these into your animals over any length of time, you lose your agouti coloring and also lose your Gray colored Dutch. I also don't like a smokey gray color because it also does away with your agouti color.

The standard states that a slight sandy tinge is permissible. I don't like a sandy tinge as it is hard to get rid of. If you breed sandy tinged rabbits together over a period of time, you'll have a lot of brassy colored animals. This brassy coloring is very undesirable.

When I pick breeding stock I never pick a buck who has any sandy coloring and seldom do I pick a doe either. I also never keep a gray without black lacing on it's ears. I also want a very light and inconspicuous eye circle. Eye color to be hazel.

This is what I would say would be good color as a breeder of Dutch. I think the important thing in color of any Dutch is to make sure you have very intense color and a glossy color so as not to get away from the Good Dutch Color. As a breeder, I would not like to see a blue gray color, as that will cause a lot more problems and frankly, I don't think it would be near as attractive as a dark gray.

As a judge, when I judge Dutch, I look for dark gray, not black, but a very dark gray color. I also look for the slate blue next to the skin. I also look for good ring or band as you blow into the fur. I want black lacing on ears. I want light gray eye circles and a hazel colored eye. I cut for a sandy tinge and I fault severely brassy, brownish coloring, and blue colors as this is not called for in the book of standards. We, as judges, have to follow what is in the book of standards until it is changed. I think in this case, the rabbits should not have been disqualified as nowhere in the book of standards does it say this is a disqualification. I believe a better way to handle this would have been "unworthy of an award". Your breeders get the message. I have given this award several times on Grays and Steel Dutch who do not follow our standards.

Seeks Re-election

Election time is getting near and as your Director, I am running for election. I would appreciate your vote. Most of all, be sure you send your ballot in when you receive it. This is the only way members can have their say,----by voting!

Wenton Carlton, Arizona

FOR SALE	
CHOCOLATE----	2 BUCKS AND 4 DOES
BLACK-----	1 BUCK AND 3 DOES
TORTOISE-----	2 BUCKS AND 1 DOE
CONTACT: ROGER EICH	BOX 502
DALLAS CENTER, IOWA 50063	PH: 515-992-3466

A.R.B.A. DISTRICT JUDGES CONFERENCE

HOSTED BY

DISTRICT DIRECTOR - ROBERT KOCH
WAUPACA, WISCONSIN

SPONSORED BY

3 & 7 RABBIT CLUB
CHEROKEE, IOWA

NOVEMBER 27, 1982 --- COMMUNITY CENTER --- CHEROKEE, IOWA
REGISTRATION 8 A.M. ---PROGRAM TO START 8:30 A.M.

BAKED HAM DINNER TO BE SERVED AT NOON

FOR FURTHER INFORMATION CONTACT: FLOYD L. COURTRIGHT
501 E. SPRUCE
CHEROKEE, IOWA 51012
PHONE. (712) 225-3575

NEWS FROM THE EAST

Eastern Dutch Fanciers News

By Dan Rohrer, Jr.

Publicity Director, E.D.R.F.C.

E.D.R.F.C. Spring Show - A Long Awaited Win

Next to a big win at a National Dutch Show or an A.R.B.A. Convention the most prestigious accomplishment for an Eastern Dutch breeder is to win B.O.B. at one of the Eastern Dutch Fanciers shows which for the Eastern fancier represent the toughest competition this side of a national event.

Our seasoned, and well-traveled breeders, George and Jean Schill finally attained this goal when they carried home the B.O.B. trophy from the Eastern Dutch Club's May 29 Spring Show in New Village, N.J. After having won the national Dutch sweepstakes and consistently placing high each year and always being tough to beat it is quite likely that most Eastern Breeders were wondering what George and Jean could do for an encore. Little did we realize that our own B.O.B. trophy had eluded the Schills for these many years. Now they've added this coveted trophy to their long list of accomplishments. Congratulations, George and Jean. We think this win was well earned and we also feel that it speaks well for the competition in the East because it was so long in coming.

Considering the lateness in the Spring and the fact that the show was held on the first day of a holiday weekend there was a good entry of Dutch at the E.D.R.F.C. show. Judge Paul Jurgelonis did an excellent job of sorting out the winners.

EDRFC Fall Show Plans - Two Shows For One Trip Dan Rohrer

The regular fall show of the Eastern Dutch Fanciers will be held in conjunction with the annual convention show of the Eastern Rabbit & Cavy Fanciers Ass'n. show October 2 and 3, at York, PA.

EDRFC Fall Show, continued.....

Dutch judging for the E.D.R.F.C. show will be held on Saturday, October 2, and for the convention show on Sunday, October 3. Different judges for each show, of course.

In planning this event it was felt that by offering the opportunity for two highly competitive shows for one enjoyable weekend trip, an unusually large entry of Dutch would be obtained for both shows. It was also felt that the back-to-back shows would serve to create a lot of interest in the Dutch Breed. It also could encourage Dutch breeders to travel from greater distances since they can participate in two shows for their travel dollars.

Barb Gioielli is show secretary for the October 2, EDRFC show. There will be approximately 25 trophies offered for this show, including a seller's class. The majority of these specials are already pledged but a few more would be appreciated especially those pledged "to be used where needed!" You can contact Barb at 1503 Lincoln Street, Catasauqua, PA. 18032.

George Strahler is Dutch Chairman for the October 3 Convention Show and is likewise seeking specials which will make the Dutch specials the envy of the other breeds. You can contact George at: 1320 Mine Lane Road - Easton, PA. 18042

We're promoting this two show concept in an effort to draw Dutch Breeders from a wider area and to single out the Dutch breed for special attention in the hopes of obtaining some new breeders for our great little bunnies.

National Dutch Show - 1984?

By Dan Rohrer

Eastern Dutch Fanciers members have begun initial considerations for plans to present a bid for the sponsorship of the 1984 National Dutch Show....We'll keep you posted as these plans progress.....

+*****



NOTICE



Elsewhere in this issue, you will find the 1981-82 ADRC Sweepstakes Final. Please be sure to check and see that our figures match with those of yours. If there is any discrepancy in the points, please notify this office immediately so that we may check our files and make corrections if need be. Please do not count points received from those shows that are outstanding. You will find those shows listed directly below the final sweepstakes....Editor

V O 'T' I E !

NEW MEMBERS.....

New Member

Jana Allen
 Paul Niebuhr
 Lyle Streeter
 Marie Macaluso
 Fay Bozeman
 Michael A. Henson
 Tommy Henson
 Cindy Cooper
 Cheryl Cooper
 Martha Jackson
 Mike Ritter
 Von N. Randall
 Robert Ackors
 Edward & Barbara Masoner
 Kevin Bloomquist
 Ricky Carmack
 Chris Kelly
 Arne Doemer
 Rochelle Doemer
 Joyce Bowerman
 Timothy A. Schroeder
 L. Todd Langshaw
 Joe Lords, Jr.
 Franklin Walberg
 Jaimie Kubaszyk
 Ken McGlothlin
 Donald Reese
 Kathy Wisniewski
 Kelly F. Gore
 Donald R. Ward
 Trina Marie Perreira
 Mr. & Mrs. Larry Nelson
 Meg Nolan
 Scott Chew
 Kathy Powell
 Shawn Bray
 Jason Conklin
 Bruce Rushforth, Jr.
 Shanon L. Anzjon-Paddock
 Michelle Norman
 Susan Greaney
 Brad Stockmaster
 Casey McHugh
 Kristin K. Van Loon
 Rodney Stevens
 Jennifer Winship
 Evert Blanton
 Rhonda Holt
 Clifford Amdahl

TX
 MN
 MI
 ID
 LA
 WV
 WV
 WA
 WA
 IA
 WA
 NV
 VT
 AR
 AZ
 TX
 OH
 MI
 MI
 MI
 IN
 MI
 OR
 IL
 IN
 IN
 IN
 IN
 IN
 MO
 HI
 IL
 VA
 CO
 CO
 WA
 CA
 MA
 WA
 ND
 NJ
 OH
 OH
 MI
 MI
 MA
 KY
 MI
 IA

Recommended By

Reid's Rabbit Ranch
 William Niebuhr
 Vern & Marti Dill
 ARBA
 Al & Barb Butler
 Al & Barb Butler
 Mills Co. RBA, Inc.
 Rabbits Magazine
 Arlene Jones
 Clifton Wesley
 Jack's Bunnies
 Vern & Marti Dill
 Vern & Marti Dill
 Vern & Marti Dill
 ARBA
 Joe & Anna Lords
 Craig Lesser
 Wilbur Williamson
 Wilbur Williamson
 Wilbur Williamson
 Wilbur Williamson
 Wilbur Williamson
 Nathan H. Perreira
 Stan Krpal
 Dan Rohrer, Jr.
 Patrick P. Herman
 Eric Roos
 Bruce Rushforth, Sr.
 ARBA
 John Bach
 Bill Geitzenauer
 Sue Stockmaster
 Sue Stockmaster
 Joyce Swartz
 Domestic Rabbits
 Vern & Marti Dill
 David Paul

WELCOME AND THANKS

HAILE'S RABBITRY

8/82

ANNETTE AND ARNOLD HAILE

4006 MISCHIRE

HOUSTON, TEXAS 77025

PHONE: 713-668-1681

BLACK AND BLUE DUTCH

USUALLY SOME FOR SALE

"WILL SHIP"

M-V RABBITRY

1/83

195 Marguerite Street Coal City, Illinois 60416

"1981"

BOB-Best Blue-IL Dutch RC - "All Dutch Show"
BOB-Best Blue-BO Blue-Best Choc-Whiteside County
BOB-Best Blue-Best Choc-Northern Illinois R.R.
Best Blue-Best Chocolate-Winnebago Forrest

BOB White Satin-----Iroquois County
Best Opp. Sex Californian----Iroquois County

BO PEEP FARMS

3/83

VERN & MARTI DILL
1677 110TH. AVE.
OTSEGO, MICHIGAN 49078
PHONE: 616-694-6367

BLACK DUTCH BLUE
CHOCOLATE

Addison's Rabbitry

12/82

Conall & Barbara Addison
Box 356, St. John, Kansas
67576

Phone: 1-316-549-6647

DUTCH

BLACK BLUE

CHOCOLATE

DAVE & DIXIE'S

12/82

RABBIT RANCH

DAVID & DIXIE PARKER
RT 2, BOX 1007
Pine Bluff, Arkansas 71603
Phone: 501-879-1031

DUTCH

BLACK, BLUE, CHOC., & TORT.

NETHERLAND DWARFS

MINI-LOPS

HOLCUMBRINK'S

10/82

RABBITRY

GARY E. HOLCUMBRINK
105 N. GRANVIEW
QUINCY, ILLINOIS 62301
PHONE: 217-222-8156

DUTCH

"CHOCOLATES"

GILMORE & LOGAN

5/83

DUTCH EXCLUSIVELY
GOOD AS THE BEST
BETTER THAN THE REST
1431 S. KANSAS
SPRINGFIELD, MO. 65807

YOU
CAN'T
BEAT
THE DUTCH

GUIDE BOOK ADS

INSIDE FRONT COVER	\$75.00	BREEDER LISTING	\$5.00
FULL PAGE	50.00	JUDGES LISTING	5.00
HALF PAGE	30.00	REGISTRAR LISTING	5.00
QUARTER PAGE	17.50	EIGHTH PAGE	10.00

MAKE ALL CHECKS PAYABLE TO: AMERICAN DUTCH RABBIT CLUB
and send to: Norma Hart, Secretary 190 N. First Ave.,
Coal City, Illinois 60416

NEW GUIDEBOOKS WILL BE MADE AVAILABLE TO THE MEMBERSHIP
BY THE 1983 NATIONAL DUTCH SHOW.

FINANCIAL STATEMENT
(SECOND QUARTER)

Memberships Received	Contingency Fund	Sec'y. Comm.	NDS Fund	ARBA Fund	Publcty. Fund	Gen. Fund	Due o/p
April \$460.75	\$59.00	\$88.36	\$66.295	\$22.095	\$44.19	\$132.56	
May 405.00	55.00	77.10	58.005	19.32	38.65	115.925	\$11.00
June 376.75	55.00	72.22	54.195	18.065	36.13	108.39	3.00
Totals 1242.50	169.00	237.68	178.495	59.48	118.97	356.875	14.00
1242.50	169.00	237.68	178.49	59.48	118.97	356.88	14.00

ARBA o/p Breeder Lstg. Combo mbshps.	
April	48.25
May	30.00
June	29.75
Total	108.00

Sanctions received	D.R. Editor Fee	Sec'y. Comm.	Gen. Fund	Refunds
April \$248.00	\$31.00	\$54.25	\$162.75	
May-youth 25.00	50.00	6.00	18.00	\$3.00 o/p
-open 360.00		77.00	231.00	
June-youth 35.00	67.00	7.00	21.00	
-open 480.00		105.00	315.00	
Totals 1148.00	148.00	249.25	747.75	3.00

Miscellaneous Income, Second Quarter:

2 Dutch Editions of Rabbits Magazine	\$ 2.00
Money collected at '82 NDS for ARBA Conv. Specials	101.00
1st. class DR Postage-----Lowell Simonson	4.00
-----Dan Rohrer, Jr.	4.00
-----Mike Stinehelfer	5.00
'82 NDS Sellers' Class	563.75
Dutch Reporter Ads -----Hero Wolters	3.00
-----Gary Grimm	4.00
-----Gilmore & Logan	6.00
-----L & L Johnson (2 Yrs.)	6.00
-----Dan Rohrer, Jr.	3.00
-----Kevin Hooper	3.00
-----Roger Eich (For Sale Ad)	3.00
-----Nathan Frisby	3.00
ARBA Registrations	9.70
Pkg. of DR's for promotional purpose reimbursement	2.00
Payment rec'd. for service charge on insufficient funds check	2.00
Money allotted for typewriter purchase from Publicity	275.00
Money allotted for typewriter purchase from Norma Hart	40.00
Interest on checking account (2nd. quarter)	46.30
TOTAL MISCELLANEOUS INCOME:	\$1085.75

CONTINUED.....

Treasurer's report, continued.....

Expenditures, Second Quarter

Contingency Fund transfer, first quarter	\$ 167.00
Secretary Commission, first quarter	536.27
Publicity Funds transfer, first quarter	124.83
Stineman Ribbon & Trophy Co. (open ribbons and rosettes)	587.89
'82 NDS Sellers' Class payback	255.00
Secretary travel expense to '82 NDS	25.00
Village of Coal City, typewriter	1040.00
Village of Coal City, typewriter supplies	49.00
Stineman Trophy & Ribbon Co. (youth ribbons)	349.37
Service contract on typewriter (good thru 8/11/83)	96.50
ARBA Conv. specials collected at '82 NDS banquet----	
1/2 for open transferred to George & Maxine Parmer for open specials	50.50
DR Editor Fee for March/April, May/June	150.00
ADRC Postage: (DR Mailing, sanctions, memberships, nomination ballots, membership overpayments, ARBA, and information for second quarter)	374.00
Joliet Office Supply (Mimeo paper, mimeo ink, stencils, index cards and one letter guide)	349.37
ARBA, combination memberships forwarded	108.00
Membership o/p returned (includes \$3.00 in overpayments received the last day of the second quarter but not paid out until 7/2/82)	14.00
Sanction overpayment	3.00
Bailey Publishing & Printing (Pics of '82 NDS for DR)	68.00
Insufficient funds check & service charge	7.00
TOTAL EXPENDITURES, SECOND QUARTER	\$4354.73

Starting Balance	\$4373.68	<u>EARMARKED FUNDS</u>	
Income, 2nd. quarter	3476.25	1982 ARBA Convention Fund	\$184.24
Expenditures	4354.73	1983 NDS Fund	400.00
July Balance, Gen Fund	\$3495.20		

Life Membership Account #6-1646-01	First Quarter Balance	\$466.08
	Interest Received	6.43
	July Balance	472.51

Contingency Fund Account #6-1647-01	First Quarter Balance	1698.24
	Transfer 1st. quarter contingency funds	167.00
	Interest received	25.74
	July Balance	1890.98

<u>Second Quarter Payments Due:</u>	Contingency Fund, 2nd. quarter transfer	169.00
	Publicity Funds, 2nd. quarter transfer	118.97
	Secretary Commission, 2nd. quarter	486.93
	TOTAL DUE:	774.90

I CERTIFY THIS TO BE A TRUE STATEMENT OF THE FINANCIAL CONDITION OF THE AMERICAN DUTCH RABBIT CLUB AS OF JULY, 1982, TO THE BEST OF MY KNOWLEDGE.

Norma Hart

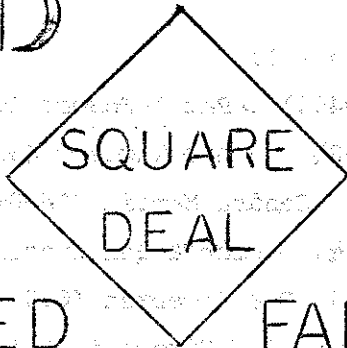
 Norma Hart, Sec'y.-Treas./ADRC

<p>L AND L JOHNSONS' 2/84 DUTCH PERIOD 712 N. Street Halstead, KS. 67056 NO SHIPPING</p>	<p>JACK & RUTH WIREMAN 12/84 Jack's Bunnies 5475 Seeman Street S.W. Navarre, Ohio 44662 DUTCH HOLLAND LOPS</p>
<p>BARTON'S BUNNIES 2/83 RT. 2 CARROLL, OHIO 43112 DUTCH CHAMPAGNE D' ARGENTS</p>	<p>2/83 "COMPLIMENTS OF A DUTCH MAN" "AL SEEMAN"</p>
<p>HERO H. WOLTERS 6/83 251 Good Springs Road Asbury, NJ 08802 BLACKS BLUES</p>	<p>ANTHONY MICALLEP 10/82 8172 Riverdale Dearborn Heights, Michigan 48127 DUTCH BLACK BLUE CHOCOLATE TORTOISE</p>
<p>THOMAS C. HADAWAY 10/82 510 Cannon St., Chestertown, MN 21620 Phone: 301-778-3673 MARSHLAND DUTCH BLACKS BLUES</p>	<p>DOUBLE DUTCH RABBITRY 12/82 Bob & Sandi Sipkema Rt.6, Box 212 Rensselaer, IN 47978 DUTCH CHOCOLATES BLACKS</p>
<p>rising sun rabbitry 10/82 HILARY BONGARD Barkhamsted, CT. Ph: 203-379-4757 BLUE & TORTOISE DUTCH MINI-LOPS</p>	<p>SPRING HILL RABBITRY 4/83 DUTCH ROCK & RICK BILLUPS DUTCH 93 Oney Ave., Huntington, W.VA. 25705 BLACK; BLUE, CHOCOLATE, TORTOISE, Gray</p>
<p>BILL GEITZENAUER 8/84 106 HARDING DRIVE WASHINGTON, NJ 07882 BLACK BLUE STEEL GRAY</p>	<p>DUTCH BOOSTER 12/82 Bill & Carolyn Campbell 436 Bittersweet Lane Henderson, Kentucky 42420 BLACK DUTCH BLACK DUTCH</p>
<p>ROHRER'S DUTCH RABBITRY 5/83 DAN ROHRER, JR. 16 Rosewood Dr., Hagerstown, MD. 21740 BLACK - BLUE - CHOCOLATE NO SHIPPING</p>	<p>NATHAN & PAT FRISBY 5/83 Rt.2, Box 41 Staffordsville, KY. 41256 Phone: 606-297-6800 DUTCH BLACK BLUE CHOCOLATE GRAY</p>
<p>STEVE GEORGE 3/83 1007 10th. Ave. S.W. Austin, MN 55912 Phone: 507-433-8279 BLACK DUTCH BLUE</p>	<p>GLENN & MACEL MORGAN 4/83 7565 Dawson Drive SE Warren, Ohio 44434 BLACKS BLUES CHOCOLATES</p>
<p>MAX & DAVID SCOTT 12/82 Rt. 1, Box 74 Morristown, Indiana 46161 Phone: 317-763-6606 DUTCH, ALL COLORS</p>	<p>NOR-DICK RABBITRY 3/83 NORMA HART & DICK GEHR 190 North First Ave. Coal City, IL. 60416 DUTCH Phone: 815-634-4788 DUTCH</p>
<p>KEVIN HOOPER 6/83 1975 MOLLIE'S ROCK RD. DRESDEN, OHIO 43821 BLACK, BLUE, CHOC., STEEL, AND GRAY</p>	<p>YOU CAN'T BEAT THE DUTCH 8/83 BACH'S DUTCH DUTCH EXCLUSIVELY JOHN BACH BOX 428 RENVILLE, MN. 56284 Phone: 612-329-8216</p>

HEINOLD

FEEDS

8/82



RABBIT FEED

FAMILY RATIONS

RABBIT BREEDERS

FOR LARGE HUSKY LITTERS, FAST WEIGHT GAINS,
TOP FINISH AND PRIZE WINNING
RABBIT FEED

HEINOLD'S SQUARE DEAL RABBIT PELLETS, MADE FROM TOP QUALITY WHOLE GRAINS,
BRIGHTER GREEN ALFALFA LEAF MEAL, VITAMINS, MINERALS, PROTEINS AND ANTIBIOTICS.

DEALER INQUIRIERS WELCOME

"THE FEED WITH THE DUTCH ON THE BAG"

Heinold Feeds, Inc.

KOUTS, INDIANA

PHONE: 219-766-2234

1982 SWEEPSTAKES FINAL

<u>NAME</u>	<u>POINTS</u>	<u>STATE</u>	<u>SHOWS</u>
1. Wenton Carlton	9453	AZ	22
2. Larry Hyer	4862	TX	12
3. George & Jean Schill	4704	PA	16
4. Dave Holland	4425½	CA	14
5. Scott & Dianne Williamson	3853½	IL	17
6. Max Scott	3506½	IN	12
7. Gioielli's Rabbitry	3492½	PA	16
8. George Strahler	3338	PA	14
9. Wilba D. & Lowell Jones	3316½	TN	6
10. Dave & Dixie Parker	2862½	AR	13
11. Anthony Micallef	2828½	MI	8
12. Kevin Hooper	2758½	OH	17
13. Gilmore & Logan	2672	MO	6
14. Larry Peterson	2413½	WA	14
15. Earl & Diane Smith	2407	TX	12
16. Les & Louise Johnson	2371	KS	7
17. R.C. & Lois Farrill	2156	TX	10
18. Andy Barton	2153½	OH	23
19. George Youngblood	1988	KY	15
20. Gary Holcumbrink	1879	IL	9

SHOWS OUTSTANDING THIS FINAL SWEEPSTAKES, AND NOT COUNTED ARE: Milan Fair 7/11/81,
Central Florida 7/11-12/81, Warren Co. Agricultural Soc. 7/22-25/81, Montana
State Fair 7/25/81, Foothills RBA 11/14/81, Metroplex RBA 12/12/81, Douglas Co.
RBA 2/13/82, Carroll Co. R & CBA 3/28/82, Mall City RBA 4/10/82,---

ALABAMA Joyce & Mike Kines (21)
ARIZONA Wenton Carlton (9453) Pat & Robert Burkett (740½) Clifton Wesley(601)
ARKANSAS D & D Parker (2862½) P & J Thweatt (959) David Parker, Jr. (16)
CALIFORNIA D Holland (4425½) Sandra Martin (1500½) Mike Lovejoy (507)
CANADA Jerry Bryczka (70½) Elmer & Bea Huggins (33)
COLORADO Fred Kitch (1267½) P & J Herman (610) Kori Fitzgerald (366½)
CONNECTICUT W Shaefer (1876½) P & H Sikorski (1618) Herschel Hicks (398)
FLORIDA Cherie Thomas (515½) Charles Haaf (50)
GEORGIA Melinda & Wayne Garrison (331½)
IDAHO Judy Farmer (255½)
ILLINOIS S & D Williamson (3853½) G Holcumbrink (1879) Nor-Dick Rabbitry (1538)
INDIANA Max Scott (3606½) Ed Hewson (990) Ray Rosing (778)
IOWA Roger & Bonnie Eich (1447) William Mixdorf (830½) Dave Paul (822½)
KANSAS L & L Johnson (2371) Robert Evertson (1586½) Marvin Cole (524½)
KENTUCKY G Youngblood (1988) M/M Wm Thompson (930½) M/M Nathan Frisby (899)
LOUISIANA C & R Frank (187) Larry Smith (72) Jimmie Daniel (71)
MAINE Lissa Fowley (755½) Joan & Don Farris (455½)
MARYLAND T. Hadaway (1113) D. Rohrer, Jr. (1052½) L. Thompson (1044)
MASSACHUSETTS P Dunning (193) W MacKinnon (134) Paul Jurgelonis (100)
MICHIGAN Anthony Micallef (2828½) Paul Ehnis (1317) Myrl Milhahn (1299)
MINNESOTA John Bach (1507) Don Reid (329) Larry & Doreen Bengtson (139½)
MISSISSIPPI Barb & C W Pruitt (6)
MISSOURI G & L Rabbitry (2672) O'Connell Brothers (1149) Gary Ray Clark (591)
MONTANA Ellis Houseman (181)
NEBRASKA Michelle Heftie (124) Kim Scott (64)
NEW JERSEY K. Pecaric (1373) Hero Wolters (682) Bill Geitzenauer (414)
NEW MEXICO Jennifer & Joel Norris (50)
NEW YORK Al Heinrich (1475) Howard French (552½) Laing Kennedy (529)
NORTH CAROLINA Kutaw Newgard (74½) Virgil Murphy (59) Gloria Groves (32)
OHIO Kevin Hooper (2758½) Andy Barton (2153½) Huber Harter (1693½)
OKLAHOMA Beverly & Dale Jones (80) Joe McGuire (12)
OREGON I-Young (845) G & M Parmer (590½) J & R Hassenpflug (340)
PENNSYLVANIA G & J Schill (4704) Gioielli's Rabbitry (3492½) George Strahler(3338)
SOUTH CAROLINA M & R Brewer (202½) Wayne McGuirt (131) B F Bloodworth (73)
SOUTH DAKOTA R & J Trudeau (626) Derrick Freese (24) Jon Sundal (21)
TENNESSEE W & L Jones (3316½) W & W Griffith (1100) M & M Watters (803)
TEXAS Larry Hyer (4862) E & D Smith (2407) R C & Lois Farrill (2156)
VERMONT Arlene Jones (126)

continued, next page.....

Sweepstake Standings, continued.....

VIRGINIA E D Smith (1400) Jennifer Fraser (265½) James McCoy (227)
WASHINGTON L & D Peterson (2413½) J & R Coffelt (1129) Nancy Brown (641½)
WEST VIRGINIA R & R Billups (598) Phillip Holcombe (455½) S Meadows (62)
WISCONSIN Chuck Stanelle (438) Jackie Daly (234) Jeff Guetschow (232)

Note* The Sweepstakes printed above are the top three placements in each state and Canada.

SHOW CALENDAR

Page 1

AUGUST 14/82

San Gabriel Valley CB at Ventura, CA Sharon Baker 15501 Yorba Ave., Chino, CA. 91710

AUGUST 15/82

Ventura County RBA at Ventura CA Elmer Paquette 334 Acacia Road, Santa Paula, CA. 93060

AUGUST 15-17/82

Iowa State Fair at Des Moines, Iowa Bob Lloyd 930 S.W. Hackley, Des Moines, Iowa 50315

AUGUST 15-22/82

Lenawee County Fair at Adrian, MI Gary McDowell c/o Lenawee County Fair, Box 792, Adrian, MI. 49221

AUGUST 16/82

Newaygo Co. 4-H Rabbit Advisory at Fremont, MI. Nancy J. Carson 16906 Maple Island Rd., Hesperia, MI 49421

AUGUST 16-21/82

Zanesville RBA at Zanesville, OH J Robert Jardine 410 Stardust Circle Zanesville, OH 43701

AUGUST 17-22/82

Indiana State Fair at Indianapolis, IN Barbara Kauchak R.R.8, Box 221 Greenfield, IN 46140

AUGUST 20-21/82

Volunteer Valley RBA at Tracy City, TN Evelyn Ledford PO Box 568 Whitwell, TN 37397

AUGUST 20-28/82

The State Fair of W.VA. at Lewisburg, W VA E.W. Rock PO Box 829 Lewisburg, W.VA. 24901

AUGUST 20-29/82

Colorado State Fair at Pueblo, CO Marjorie Vaughn 2416 Rice Pueblo, CO 81004

AUGUST 21/82

San Fernando Valley R & CBA at Burbank, CA G. Nash PO Box 1241 Sun Valley, California 91352

Genesee County Fair at Mt. Morris, MI Linda Fleming 7475 N. Linden Rd. Mt. Morris, MI. 48458

AUGUST 22/82

Calumet RBA & Lake CO Fair at Crown Point, IN Bette Sommer 1413 Truman Hammond, IN 46320

AUGUST 22-23/82

National Capital RBA at Gaithersburg, MD Barbara Gesswein 9805 Hawkins Creamery RD., Damascus, MD 20750

AUGUST 25/82

Missouri State Fair at Sedalia, MO M/M Harry Fisher, Jr. PO Box 111 Sedalia, MO 65301

continued, next page.....

AUGUST 25-28/82

Benton-Franklin County Fair at Kennewick, WA Bonnie Kelly 1025 E 27th. Ave,
Kennewick, WA 99336

AUGUST 28-29/82

York County RBA at Acton, Maine Joan C. Farris 10 First ST., Berwick, ME 03901

AUGUST 28-SEPTEMBER 2/82

Paulding RBA at Paulding OH Dale A Boroff Rt 1, Box 829 Paulding, OH 45879
(OPEN AND YOUTH)

AUGUST 28-SEPTEMBER 6/82

Evergreen State Fair at Everett, WA Evergreen State Fair PO Box 129 Everett,
WA. 98201

AUGUST 28-SEPTEMBER 6/82

New York State Fair at Syracuse, NY Kathy Zimdahl 17 E Elm St., Tully, NY 13159

AUGUST 29/82

Bloomington-Normal RBA at Bloomington, IL Judith Mohr R R 4 Bloomington, IL 61701
(OPEN AND YOUTH)

AUGUST 31/82

Cherryland RBA at Traverse City, MI Robert Sauer 1450 West St. Benzonia, MI
49616

SEPTEMBER 2/82

Michigan State Fair at Detroit, MI Angie Ellis c/o Michigan State Fairgrounds
Detroit, MI 48203

SEPTEMBER 2-6/82

Canfield Fair at Canfield, OH Grace E Williams PO Box 27 Canfield, OH 44406

Sunflower State Expo at Topeka, KS Mary Lee PO Box 1918 Topeka, KS 66601

SEPTEMBER 4-9/82

Van Wert Co RBA at Van Wert, OH Nancy Dixon R 1, Van Wert, OH 45891

SEPTEMBER 5/82

Central Maine RBA at Gardiner Sportsmans Club Jo Ann Noble R.#3, Box 171,
(OPEN AND YOUTH) Augusta, Maine 04330

SEPTEMBER 5/82

Columbus RBA at Hilliard, OH Dolores Breckenridge 1479 Cole Road Columbus, OH.
43228

Western Iowa RBA at Onawa, Iowa Jean Trudeau RR 2, Box 46 Jefferson, SD 57038

SEPTEMBER 7-11/82

Ann Arbor RBA at Saline, MI Ms. Debbie Eagleson-Brown 2321 South Lima Center,
Chelsea, MI 48118

SEPTEMBER 9-27/82

Los Angeles Co Fair at Pomona, CA Sunny Harper 20041 Clark St. Orange, CA.
92669

SEPTEMBER 12/82

Williams Co RBA at Montpelier, OH John Friedel RR 3 Bryan, OH 43506

SEPTEMBER 10-18/82

York Fair at York, PA Frank V McConkey 334 Carlisle Ave, York, PA. 17404-3299

SEPTEMBER 11/82

Southwest RBA at Alvarado, TX Gary & Becky Russell 22 Shadowbrook Lane
Hurst, Texas 76015Tennessee Valley A & I Fair at Knoxville, TN Don Holifield PO Box 6066
Knoxville, TN 37914

Fox Valley RC at Seymour, WI Lois Smith R#3, Box 122 Seymour, WI 54165

East Kentucky RBA at Greenup, KY Nathan Ray Frisby Rt 2, Box 41 Staffordsville,
Kentucky 41256

continued.....

SEPTEMBER 11/82

Rabbit Breeders & Fanciers of Capitol District at Cobleskill, NY
 William Hillmann RD 2, Box 3 Delanson, NY 12053

SEPTEMBER 11-12/82

Wisconsin State Convention at Elkhorn, WI Luella Calkins 724 Phipps Ave.,
 Rice Lake, WI 54868

Indiana State RBA at Indianapolis, IN Icele Case 3136 N Wozniak Rd.
 (OPEN AND YOUTH) Michigan City, IN 46360

SEPTEMBER 11-14/82

Inland Empire RBA at Spokane, WA Gwen Lareva E. 13710 Wellesley Spokane, WA
 99214

SEPTEMBER 11-19/82

Kansas State Fair at Hutchinson, KS Mary E Fast 3301 N Plum Hutchinson, KS
 67501

SEPTEMBER 12/82

Chesterfield, VA. County Fair Sandra Regan 221 N Courthouse Road Richmond,
 Virginia 23236

Wolf River Rabbit Club at Seymour, WI Janet Beyer R #1, Box 332B Shawono, WI
 54166

RI RBA at Richmond, RI Bruce W Perra 1333 Centreville Rd., Warwick, RI 02886

SEPTEMBER 14/82

New Mexico State Fair at Albuquerque, NM Edgar White PO Box 8546 Albuquerque,
 New Mexico 87198

SEPTEMBER 16-20/82

Western Washington Fair at Puyallup, WA Janice Saum 5620 E 112th. St.,
 Puyallup, WA 98373

SEPTEMBER 18/82

Anoka County RC at Anoka, MN Phyllis Morris 249 Constance Blvd. NW Anoka,
 (OPEN AND YOUTH) MN. 55303

Mass. Fed. of R. & C.C. at Topsfield, Mass. Nancy Platt 299 E. Main Street,
 (OPEN AND YOUTH) Norton, MA. 02766

Mid-Valley Youth Rabbit Club at Turlock, CA Shannon Sanford 1706 E Keyes Road,
 (YOUTH) Ceres, CA. 95307

Eastern Michigan RBA at Goodells, MI Kathy Ruemenapp 8288 Broadbridge,
 Fair Haven, MI 48023

Emerald Empire RBA at Cottage Grove, OR Ilene Young 2250 Valhalla Street,
 Eugene, OR 97401

Niagra Frontier RC at Hamburg, NY Shirley Dowski 3226 Porter Center Road,
 Youngstown, NY 14174

Ft. Payne RC at Ft Payne, AL Coy Phillips Rt 1, Box 365 Ft. Payne, AL. 35967

SEPTEMBER 18-19/82

Illinois State Convention at Springfield, IL Norma Hart 190 North First Avenue,
 (OPEN AND YOUTH) Coal City, IL 60416

SEPTEMBER 18-21/82

National Cattle Congress at Waterloo, Iowa Richard Byrum PO Box 298 Waterloo,
 Iowa 50704

SEPTEMBER 18-25/82

Tri-State Fair at Amarillo, TX Emily Dowdy 256 W Mobley Amarillo, TX 79108

continued.....

SEPTEMBER 19/82

Nutmeg RBA at Bethlehem Fairgrounds Hilary Bongard PO Box 193, Pleasant Valley, CT 06063

Akron Rabbit Club at Tallmadge, OH Mrs. Dorothy Krahl 2555 Wadsworth Road, Norton, Ohio 44203

Council Bluff RBA at Underwood, Iowa John Randall Rt.1, Box 39-A, Crescent, Iowa 51526

SEPTEMBER 24-OCTOBER 2/82

Central Washington State Fair at Yakima, WA Greg G Stewart c/o Central WA. State Fair PO Box 1381 Yakima, WA 98907

SEPTEMBER 25/82

Totem Rabbit Club Betty Spady 19537-76th. Avenue, Surrey-B.C. Canada V3S 4P1

Meramec Valley R. & CBA at Rolla, MO Carol Williams Rt 4, Box 160 Salem, MO 65560

So West VA RBA at Beckley, W VA Charles Larabee Rt 2, Box 381 Charleston, W VA 25314

Oregon State Convention at Yoncalla, OR. Larry Knotts Rt 1, Box 125 Yoncalla, OR. 97499

SEPTEMBER 25-26/82

State Fair of Virginia at Richmond VA. Becky Walker 6526 Cornfield Lane, Mechanicsville, VA. 23111

Lewis-Clark RBA at Lewiston, Idaho Judy Farmer 3825 17th. St. Lewiston, ID 83501

SEPTEMBER 25-OCTOBER 2/82

Panhandle So. Plains Fair at Lubbock, TX Rosalie Berry 513 E Kent Lubbock, TX 79403

SEPTEMBER 26-82

Washington CO. RBA at Washington, PA Barbara Bocher 55 Grable Rd., Washington, PA. 15301

Mid-Ohio RBA at London, OH Leonard Kestner 6936 East National Road, South Charleston, Ohio 45368

Oregon State Convention at Yoncalla, OR Larry Knotts Rt. 1, Box 125, Yoncalla, OR. 97499

N.N.J. Rabbit & CB at Augusta, NJ Bonnie De Young & Frank Del Mastro, 23 Holiday Lane, West Milford, NJ 07480

SEPTEMBER 26/82

Sandusky Valley RBA at Fremont, OH Robert Bowman 5234 N. Twp. Rd. 81, Rt. #3, Bellevue, Ohio 44811

SEPTEMBER 26/82

Mohawk RBA at Sutton, MA Sue Scanlon RFD 203X, Douglas, MA 01516

OCTOBER 1-10/82

Ventura County Fair at Ventura, CA Elmer Paquette 334 Acacia Rd., Santa Paula, CA. 93060

Arkansas State Fair at Little Rock, AR W.M. Dorough PO Box 907, Little Rock, Arkansas 72203

OCTOBER 2/82

Auto City RBA at Saline, MI Angie Ellis 21224 Sherman, Southfield, MI 48034

Pasadena RBA at Baytown, TX Lillie K. Dowdy & Mary Ann Nona P O Box 1952, Pasadena, Texas 77501

Hop To it RC at Stewert, MN Annette Jaeger Rt 1, Box 72, Gaylord, MN 55334

continued, next page.....

OCTOBER 2/82

Rabbit Promoters of San Mateo Co. at Daly City, CA Judy Evans 407 Hillcrest Rd., San Carlos, CA 94070
(OPEN AND YOUTH)

Eastern Dutch RF at York, PA Barb Gioielli 1503 Lincoln St., Catasauqua, PA 18032

Delaware Co RBA at Muncie, IN Jerry Clark 2404 N Country Club Road, Muncie, Indiana 47302

Long's Peak RBA at Loveland, CO Linoa Heil 4401 Terry Lake Road, Ft. Collins, Colorado 80524

Alabama RBA at Birmingham, AL La Nell McLaughlin Rt 3, Box 501, Leeds, AL 35094

Ark. Fed. of Dom. RB at Little Ark. State Fair Grounds, Becky Smith Rt 9, Box 798, Pine Bluff, AR 71603

OCTOBER 2-3/82

Eastern R & CFA at York, PA Cindy Ray 19421 Gardner Place, Germantown, MD. 20874

OCTOBER 3/82

Stonebelt RBA at Bloomington, IN Jane Stevens 8485 E Baby Creek Rd., Bloomington Indiana 47401

Cuyahoga R & CBA at Berea, OH Edward Young 6108 Hillside Rd., Independence, Ohio 44131

OCTOBER 9/82

Midland R & C CO-Op at Midland Co. Fairgrounds Lisa VanHove 9540 Harrison Ave. Farwell, MI 48622

Kentucky State RBA at Shepherdsville, KY Nancy Youngblood Rt 2, Box 141, Paducah, KY. 42001
(OPEN AND YOUTH)

San Juan R & P BA at Farmington, NM Lora Blankinship PO Box 735, Flora Vista, NM 87415

OCTOBER 9-10/82

Southwest LA. RBA at Sulphur, LA Mrs. Cartha Rogers 2108 Ellis Drive, Westlake, LA. 70669

OCTOBER 10/82

Harvey Co. RBA at Hillsboro, KS Barbara Kottwitz R R 2, Box 60, Peabody, KS 66866

Grundy Co. RBA at Morris, IL Adrienne & Bill Lorenz R R 1, Box 57A, New Lenox, Illinois 60451
(OPEN AND YOUTH)

Monroe Co. RBA at Waterloo, IL Tony Kleiboeker PO Box 121 Breese, IL. 62230
(OPEN AND YOUTH)

Bay State RBA at MA. Richard Boynton 41 Locust St., Assonet, MA. 02702

Bullitt Co. RB & 4-H RC at Shepherdsville, KY. F.B. Coomer 6210 Yellow Pine Dr., Louisville, KY 40229

OCTOBER 16/82

Central Alabama RC at Montgomery, AL. Sue Brannon 631 Greenridge Rd., Montgomery, AL. 36109

Mid-Willamette Valley RBA at Albany, OR. Gwen Parker 36281 Middle Ridge Dr., Lebanon, OR. 97355

Penn-Ohio RB at Canfield, Ohio Edna Wehr 14725 Green Beaver Rd., Salem, OH. 44460

Forest City RB at Woodstock, Ontario Mrs. Stella Pearson R R #4, Komoka, Ontario, Canada NOL 1R0

Golden Prairie RBA at Boswell, IN Linda Morgan Box 36 Ambia, IN 47917

continued, next page.....

OCTOBER 16-24/82

Golden Triangle RC at Beaumont, TX Bob Whitman 2355 Rusk, Beaumont, TX 77702

OCTOBER 17/82

Tuscarawas County RBA at New Philadelphia, OH Henry W. Green, 1859 East High Ave
(OPEN AND YOUTH) New Philadelphia, OH 44663

OCTOBER 17/82

Mid-Missouri R & CBA at Columbia, MO Mrs. Dixie Forsee Route 13, Columbia, MO
65201Winnebago Forest RBA at Rockford, IL Ron Holmgren 1307 Union, Belvidere, IL
61008*****

SHOW REPORTS

FEBRUARY 14, 1982 Lakeland RBC at Elkhorn, WI

JUDGE: Fidelis Steinhoff 10 Dutch 6 exhibitors 5 nm---BOB Blk SB C Stanelle-
BOS Blue SD Stanelle 5 Blk SB Stanelle---3 Blue SD Stanelle---1 Tort SD nm---
1 Gray SB nm---Points: Chuck Stanelle 51

APRIL 3, 1982 Jacksonville RBA at Green Cove Springs, FL

JUDGE: Horace Curtis 6 Dutch 5 exhibitors All Non-members

APRIL 10, 1982 All Southern Dutch RC at South Pittsburg, TN

JUDGE: Don Burchfield 64 Dutch 8 exhibitors 4 nm---BOB Tort JB L & W.D. Jones---
BOS Blk SD nm---17 Blk SB L & W.D. Jones---13 Blue JB nm---5 Choc SB Jones---29
Tort JB Jones Points: L & W.D. Jones 524, W/W Griffith 244, B & C Tuck 117,
B & C Campbell 38

APRIL 10, 1982 Chattanooga R.C. at South Pittsburg, Tn.

JUDGE: Glen Carr 54 Dutch 7 exhibitors 4 nm---BOB Tort. JB Lowell & Wilba D.
Jones---BOS W.R. & Wilma Griffith Blk SD---15 Blk SB L & W.D. Jones---7 Blue nm-
4 Choc SB L. & W.D. Jones---28 Tort JB L. & W.D. Jones Points: L & W.D. Jones 419
W/W Griffith 258, B & C Campbell 36

APRIL 10, 1982 Tualatin Valley RBA at Hillsboro, Or.

Judge: Larry Carlsen 39 Dutch 17 exhibitors 9 nm---BOB Blk SB nm---BOS Choc JD
Heather Venn---16 Blk SB nm---6 Blue SB nm---5 Choc JD H. Venn---5 Tort SB G & M
Parmer---2 Steel no BOV---5 Gray SD nm Points: G & D Hickmott 46, M Langner 54,
I. Young 48, R. Reser 12, T Bennett 0, B Bennett 12, G & M Parmer 24, H Venn 34½

APRIL 10, 1982 North Carolina RBA at Monroe, NC

JUDGE: Francis Archambault 10 Dutch 4 exhibitors ALL ADRC MEMBERS---BOB BLK
SB Virgil Murphy---BOS Blue SD Wayne McGuirt---2 Blk SB V. Murphy---2 Blue SD W
McGuirt---3 Choc JB V. Murphy---2 Tort SD T Rogers---1 Steel SB W McGuirt Points:
W McGuirt 29, V. Murphy 28, K Newgard 6, T Rogers

APRIL 16-17-18, 1982 Pima County Fair at Tucson, Az.

JUDGE: Allen Barr 91 Dutch 5 exhibitors 3 nm---BOB Blue JD Wenton Carlton---
BOS Gray JD W Carlton---22 Blk JB D Holland---15 Blue JD W Carlton---19 Choc SB
nm---15 Tort SB nm---7 Steel JD W Carlton---13 Gray SB W Carlton Points: W.
Carlton 645½, D Holland 385

APRIL 17, 1982 Southern Fla. RBA at Ft. Myers, Fl.

JUDGE: Horace Curtis 15 Dutch 7 exhibitors ALL NM

APRIL 17, 1982 Audubon-Pennyrile RBA at Henderson, Ky.

JUDGE: Wally Zahn 17 Dutch 4 exhibitors 1 nm---BOB Gray SB George Youngblood--
BOS Blue SD G Youngblood---7 Blk SB nm---4 Blue SD G Youngblood---4 Choc JB Sean
Thompson---1 Tort SB G Youngblood---1 Gray SB G Youngblood Points: S Thompson
80, G Youngblood 73½, S Smith 14

APRIL 17, 1982 Northern Idaho RBA at Coeur d Alene, Id.

JUDGE: Olan Williams 6 Dutch 2 exhibitors Both ADRC Members---BOB Choc SB
Kiki Barber---BOS Blk SD Farmer's Bunny Corral---2 Blk SB K Barber---1 Blue SB
Farmer's B.C.---3 Choc SB K Barber Points: K Barber 39, Farmer's B.C. 27

APRIL 17, 1982 Tri-County RBA at No. Ft. Myers, Fl.

JUDGE: Richard Allebach 13 Dutch 7 exhibitors ALL NM

APRIL 17, 1982 Balto & Howard Co. RCBA at W. Friendship, Md.

JUDGE: Floyd Tobias 60 Dutch 14 exhibitors 5 nm---BOB Blk SB T Hadaway---
BOS Blk SD L Thompson---33 Blk SB T Hadaway---11 Blue JB T Hadaway---9 Choc SD
W McNamara---2 Tort SB E Woods---2 Steel SD L Thompson---3 Gray SB L Thompson
Points: Lucky Foot Rabbitry 10, G Strahler 228, T Hadaway 236, K Pecaric 24, C.A.
Mattingly 47, E Woods 29, W McNamara 91, C Marino Sr. 12, L Thompson 216

APRIL 17, 1982 Hudson Valley RBA at Yorktown, NY.

JUDGE: Jurgelonis 27 Dutch 9 exhibitors 3 nm---BOB Blk SD Christina Byrne---
BOS Blue SB C Byrne---14 Blk SD C Byrne---7 Blue SB C Byrne---1 Choc JB K Pecaric
5 Tort SB H Bongard Points: H Bongard 6, K Pecaric 60, C Byrne 178½, L Dziedzic
23, A Heinrick 42, K Fischer 8

APRIL 17, 1982 Satellite RBA at Spring Tx.

JUDGE: Dale Allison 30 Dutch 11 exhibitors 6 nm---BOB Blk JD nm---BOS Blk JB
nm---14 Blk JD nm---2 Blue SB nm---7 Choc JB nm---7 Tort JD D & N Brady Points:
D Rocka 48, E & D Smith 62, C & T Waybright 14, D & N Brady 33, D & J Lorenz 38

APRIL 17, 1982 Tualatin Valley RBA at Wilsonville, Or.

JUDGE: Vern Palmblad 36 Dutch 12 exhibitors 3 nm---BOB Blk SB nm---BOS Blk SD
Melissa Langner---11 Blk SB nm---5 Blue SB Ilene Young---4 Choc SB Heather Venn--
9 Tort SD Steve Tuma---4 Steel JB G & M Parmer---3 Gray JD nm Points: S Tuma 30,
T Bennett 9, B Bennett 14, G & M Parmer 73, G & D Hickmott 46, H Venn 36,
M Langner 42, I Young 62, K Braun 8

APRIL 17, 1982 Anderson Co. RBA at Anderson, SC.

JUDGE: Jimmy Hillard 19 Dutch 7 exhibitors 3 nm---BOB Blk JD nm---BOS Blue SB
nm---4 Blk JD nm---7 Blue SD Tommie & Ralph Simpson---4 Choc JB B.F. Bloodworth--
2 Tort SB W McGuirt---1 Steel SB W McGuirt---1 Gray SD T & R Simpson Points:
M Garrison 24, B.F. Bloodworth 47, W McGuirt 32, T & R Simpson 30

APRIL 17, 1982 Yakima Valley RBA at Selah, Wa.

JUDGE: Betty Beckendorf 16 Dutch 8 exh. 3 nm---BOB Blk SB Jim & Eonnie Kelly---
BOS Blk SD Larry & Donna Peterson--- 9 Blk SB J & B Kelly---4 Blue SB L & D Peter
son---1 Choc JB nm---1 Tort JD Jan & Russ Coffelt---1 Steel JB J & R Coffelt
Points: J & B Kelly 52, L & D Peterson 76 K Pudney 15, J & R Coffelt 22 N Brown 16

APRIL 17, 1982 Central La. RBA at Alexandria, La.

JUDGE: Charles Haaf, Jr. 12 Dutch 5 exhibitors 4 nm---BOB Blue JD nm---BOS
Blk SB Larry Smith---6 Blk SD nm---6 Blue JD nm Points: L Smith 72

APRIL 18, 1982 North Central In RBA at Goshen, IN

Judge: Ed Toebbe 39 Dutch 8 Exhibitors 1 nm---BOB Blk SD J Swartz---BOS Blk JB J Swartz---13 Blk SD Swartz---8 Blue SB M & D Scott---10 Choc JD M & D Scott---2 Tort SB M & D Scott---3 Steel SD M & D Scott---3 Gray SB J Swartz---
Points: Max & David Scott 155, Joyce Swartz 118½, Reggie Shull 95, Robert Sipkema 55, Vern & Marti Dill 44, Carol Sipkema 24, Jan Ery 12

APRIL 18, 1982 Decatur Area RBA at Decatur, IL

Judge: Oren Reynolds 20 Dutch 6 Exhibitors 2 NM---BOB Blue SD M-V Rabty---
BOS Choc JB B Auxier---1 Blk JB M-V Rabty---13 Blue SD M-V Rabty---2 Choc JB B Auxier---3 Torts SB Nor-Dick Rabty---1 Gray (no award) nm Points: M-V Rabty, Ev Corn 122, Tony Kleiboeker 44, Nor-Dick Rabty 26, Brenda Auxier 12

APRIL 18, 1982 Miami Valley RCat Greenville, OH

Judge: Harold Guthrie 25 Dutch 8 Exhibitors 4 NM BOB Blk SB L Meiser---
BOS Choc JD nm---8 Blk SB Meiser---3 Blue SD nm---5 Choc ?---8 Tort JB nm---
1 Gray SD Sherrie Creek Points: Lawrence Meiser 91, Eldon & Barb Wical 34, Sherrie Creek 26, Judith Johnson 8

APRIL 18, 1982 Western Mass. RBA at Agawam, MA

Judge: Louis McGuire 50 Dutch 8 Exhibitors 1 NM---BOB Blk SD W chaefer---
BOS Blue Sb W Schaefer---18 Blk SD Schaefer---11 Blue SB Schaefer---9 Choc SD Schaefer---10 Tort SB H Bongard---2 Gray JD nm Points: W Schaefer 267, Pat Sikorski 252, Kimberly Pecaric 59, L Fowley 56, P Dunning 52, Hilary Bongard 30, R Ernenwein 9

APRIL 24, 1982 North Central Iowa RFA at Iowa Falls, Iowa

Judge: Darrell Bramhall 36 Dutch 8 Exhibitors 1 NM---BOB Choc SD L Simonson---
BOS Blk SB S George---13 Blk SB S George---13 Blue JD D Paul---4 Choc SD Lowell Simonson---2 Tort SB Burkley Earles---1 Steel Disq---3 Gray SD Mixdorf Rabty---
Points: David Paul 120, Mixdorf Rabbitry 115, Steve George 92, Lowell Simonson 68, Robert Brown 48, Burkley Earles 28, Frances Draper none

APRIL 24, 1982 Oklahoma RBA at Oklahoma City, OK

Judge: Gordon Fry 7 Dutch 2 Exhibitors all members---BOB Blk SD D & B Jones---BOS Blk JB J McGuire---3 Blk SD D & B Jones---1 Blue SB J McGuire---2 Steel SD D & B Jones---1 Gray SD D & B Jones---Points: D & B Jones 39, J Mc Guire 21½

APRIL 24, 1982 Central Oregon Coast RBA

Judge: Betty Beckendorf 27 Dutch 13 Exhibitors 6 NM---BOB Blue JB Sandi Wright---
BOS Blue SD nm---6 Blk SB Kay Brown---8 Blue JB S Wright---2 Choc SB Ilene Young---
6 Tort SB G & M Parmer---2 Steel SB nm---3 Gray JD I Young---Points: I Young 59, Sandi Wright 45, G & M Parmer 38, K Brown 12, Steve Tume 8, Tim Bennett 6, Melissa Langner 0

APRIL 24, 1982 So Central RB at Jackson, MI

Judge: Claude Bennett 29 Dutch 7 Exhibitors 3 NM---BOB Blk JD nm---BOS Blue JB Marti Dill---12 Blk JD nm---10 Blue JB M Dill---6 Choc SB Dill---1 Steel SB J Daugherty---Points: Ed McKleney 96, Betty Storey 80, Marti Dill 59½, James Daugherty 44

APRIL 24, 1982 Eastern Colorado RC at Henderson, CO

Judge: Keith McNinch 25 Dutch 9 Exhibitors 5 NM---BOB Blk SB B Barrows---BOS Blk SD Pike Rbty.---10 Blk SB Barrows---7 Blue JB Barrows---1 Choc SD nm---6 Tort SB nm---1 Steel SD nm---Points: Pike Brothers Rbty. 78½, Sandy & Wes Nelson 12, Babbette Barrows 91, Chris Orth 8

more, next page.....

APRIL 24, 1982 Pearl River Co. RBA at Picayune, MS.

Judge: Thomas Coatoam 21 Dutch 5 Exhibitors 1 NM---BOB Blk JB R Frank---BOS R Borne Gray JD---17 Blk JB R Frank---1 Blue Disq---1 Choc JB Frank---2 Gray JD Borne---Points: E & M Storey 120, R Frank 89, R Borne 30½, C & B Pruitt 27

APRIL 24, 1982 Smoky Mountain RBA at Knoxville, TN

Judge: Ed Toebbe 14 Dutch 7 Exhibitors 6 NM---BOB nm Blk SD---BOS Blk SB nm--6 Blk SD nm---2 Blue SD T & R Simpson---1 Choc SB Disq---5 Gray SD T & R Simpson--Points: Tommye & Ralph Simpson 24

APRIL 24, 1982 Mid-Tex RBA at Rockdale, TX

Judge: Frank Farrow 58 Dutch 8 Exhibitors 3 NM---BOB Tort JD D & N Brady---BOS Blk JB RC & Lois Farrill---25 Blk SD Reid's Rabbit Ranch---9 Blue JB D & E Smith---4 Choc SB nm---17 Torts JD Brady---2 Gray JB D & E Smith---(1 Steel)Elim. Points:D & E Smith 214, RC & Lois Farrill 203, Don & Nelle Brady 181, Reid's Rabbit Ranch 115, Donny & Janet Lorenz 29

APRIL 25, 1982 Central Oregon Coast RBA

Judge: Conall Addison 28 Dutch 12 Exhibitors 6 NM---BOB Blue SD nm---BOS Blk SB K Brown---5 Blk SD M Langner---8 Blue SD nm---2 Choc SB I Young---8 Tort SD S Tuma---2 Steel JB G Parmer---3 Gray JD nm---Points: I Young 106, G & M Parmer 40, Kay Brown 26, Steve Tuma 12, Tim Bennett 8, Melissa Langner 6

APRIL 25, 1982 Tri County RBA at Waukesha, WI

Judge: Claude Bennett 15 Dutch 6 Exhibitors 4 NM--- BOB Blue JB J Guetschow--BOS ? nm---2 Blk JB nm---6 Blue JB J Guetschow---2 Choc SB nm---3 Tort SB nm---1 Steel JB nm---1 Gray JD nm---Points: J Guetschow 45, Mrs. R Wilke 15

APRIL 25, 1982 Madison Co. RC at Alexandria, IN

Judge: Harold Guthrie 36 Dutch 8 Exhibitors 1 NM---BOB Blk SB TE & Sandy Reed--BOS Blk SD nm---14 Blk SB Reed---4 Blue SDE Hewson---11 Choc JD E Hewson---7 Tort SB E Hewson---Points: Hewson 207, R Rosing 72, T E & Sandy Reed 66, Reginald Shull 47, Steve Huse 29, David Klier 28, Lisa Taylor 15

APRIL 25, 1982 Fair City RC at Aberdeen, SD

Judge: Orville Bloomquist 48 Dutch 10 Exhibitors 7 NM---BOB Blk SD J Bach---BOS Tort SB J Bach---16 Blk SD Bach---15 Blue SD nm---5 Choc SB D Freese---7 Tort JD Bach---1 Steel JD nm---4 Gray JB nm---Points: John Bach 310, Chad Aspelin 48, Derrick Freese 38

APRIL 25, 1982 Texas Panhandle RBA at Amarillo, TX

Judge: C.M. Carroll 12 Dutch 2 Exhibitors Both members---BOB Steel JB R Berry--BOS Blue JD R Berry---1 Blk JB Berry---1 Blue JD Berry---1 Tort SD Berry---1 Steel JB Berry---8 Gray JB Berry--Points: Robert Berry 131, Bud & Patti Romine 17

APRIL 25, 1982 NoDak RB at Aberdeen, SD

Judge: Rodney Dannehl 49 Dutch 10 Exhibitors 7 NM---BOB Tort SB J Bach---BOS Tort SD J Bach---16 Blk SB nm---16 Blue SB Bach---5 Choc SB Bach---7 Tort SB Bach---1 Steel JD Disq 4 Gray JB Bach---Points: John Bach 331½, Derrick Freese 31, Chad Aspelin 21

APRIL 25, 1982 Mil-Mon Cavy Breeders at Waterloo, IL

Judge: Ivan Miller 15 Dutch 4 Exhibitors 2 NM---BOB Blk SD Youngblood---BOS Gray SB Youngblood---5 Blk SD Youngblood---3 Blue JDT Kleiboeker---5 Choc SD nm--1 Tort SB Youngblood---1 Gray SB Youngblood---Points: George Youngblood 82½, Tony Kleiboeker 22

APRIL 25, 1982 Four Seasons R & CC at Brentwood, NH

Judge: Henry Connors 28 Dutch 5 Exhibitors 2 NM---BOB Choc SD P Sikorski---
BOS Tort SB P Sikorski---16 Blk SD P Dunning---6 Blue SD Sikorski---4 Choc SD
Sikorski---2 Torts SB Sikorski---Points: Pat Sikorski 249, Donald Farris 71, Pam
Dunning 30

APRIL 25, 1982 Capital City RC at Topeka, KS

Judge: Don Moncrief 21 Dutch 8 Exhibitors 4 NM---BOB Blk JD Evertson Rbty.---
BOS Blk SB Evertson Rbty.---9 Blk JD Evertson---5 Blue SDnm---3 Choc JB Addison Rbty
3 Tort SD M Cole---1 Steel SD Addison Rbty---Points: Bob Evertson 73½, Conall
Addison 33, Marvin Cole 12, Gary Ray Clark 6

APRIL 25, 1982 Morrow RR at Mt Gilead, OH

Judge: Al Butler 54 Dutch 9 Exhibitors 2 NM---54 Dutch BOB Blue JD K Hooper---
BOS Steel SB M Stinehelfer---21 Blk SB R & R Billups---9 Blue JD Hooper---12 Choc
SB Hooper---6 Torts SB R & R Billups---4 Steel SB Stinehelfer---2 Gray (U.O.A. &
Elim.)---Points: R & R Billups 211, K Hooper 202, G & J Schill 119, M Stinehelfer
81, S Meadows 67, David Jenkins 50, Mary Powers 32

APRIL 25, 1982 Freestate Dom. RC at Frederick, MD

Judge: Jack Pugh 70 Dutch 17 Exhibitors 4 NM---BOB Blk JD D Rohrer---BOS Blk SB
B Bachschmid---32 Blk JD Rohrer---14 Blue SD Strahler---12 Choc SD McNamara---5
Torts JB Pecaric---2 Steel SD Thompson---5 Gray JD A Miller---Points: Dan Rohrer
169, Larry Thompson 153, Warren McNamara 130, George Strahler 116, Beth Bachschmid
95, Kim Pecaric 75, Charlotte Mattingly 52, Art Miller 50, Kent Miller 48, Dawn
Perkins 42, David Maas 38, Kathleen Maas 38, Carl Marino Jr. 14

APRIL 25, 1982 Finger Lakes RBA at Syracuse, NY

Judge: Harry Jessmer 47 Dutch 13 Exhibitors 8 NM---BOB Blk SB nm---BOS Blk JD
nm---27 Blk SB nm---7 Blue SB L & K Kennedy---3 Choc SD nm---5 Torts SD nm---1
Steel SB Kennedy---4 Gray SB nm---Points: Howard French 101, Al Heinrich 91,
Laing Kennedy 68, Bruce Blass 49, Don Smith 20

MAY 1, 1982 Owatonna Area RC at Owatonna, MN

Judge" Ted Kozicki 43 Dutch 10 Exhibitors 5 NM---BOB W Niebuhr Blue SB---BOS
Tort JD J Bach---18 Blk SB nm---11 Blue SB Niebuhr---5 Choc SD nm---4 Torts JD
Bach---1 Steel SB nm---4 Gray JD nm---Points: John Bach 223½, William Niebuhr 97,
Robert Brown 50, Steve George 39, Larry Bengtson 0

MAY 1, 1982 N Central AL RBC at Decatur, AL

Judge: Don Burchfield 8 Dutch 3 Exhibitors 3 NM

MAY 1, 1982 Teche RBA at Franklin, LA

Judge: Frank Farrow 16 Dutch 5 Exhibitors 1 NM---BOB Blk JB nm---BOS Gray JD
D Country, Randy Borne---13 Blk JB R Franks, 1 Choc JB Franks---2 Gray JD R Borne-
Points: Ron Franks 56, Jimmie Daniel 54, Theresa Harrington 50, Randy Borne 37

MAY 1, 1982 Rabbit Producers of Santa Clara Valley at San Jose, CA

Judge: George Bayliss 13 Dutch 6 Exhibitors 3 NM---BOB Tort SB S Sanford---BOS
Tort SD S Sanford---2 Blk (Disq & Elim)---1 Choc (Elim) ---4 Tort SB Sanford---
6 Gray SB M.E. King---Points: Shannon Sanford 37½, Mary Ellen King 24, Marjorie
Hartzell 0

MAY 1, 1982 San Juan R & P BA at McGee Park

Judge: Thad Greer 5 Dutch 3 Exhibitors All Non Members

more, next page.....

MAY 1, 1982 Quincy Area RB at Quincy, IL All Dutch Show

Judge: Gary Grimm 111 Dutch 16 Exhibitors 4 NM---BOB Blk JD G&L Rabbitry---
 BOS Blue SB M-V Rbty, Ev-Corn---35 Blk JD G & L---24 Blue SB M-V Rbty.---18 Chc
 JB G Holcumbrink---30 Torts SB S & D Williamson---1 Steel JB Williamson---3 Gray
 SD Williamson---Placements: Blk: SB; G & L, G&L, Williamson, Osmon, G&L---
 SD; NM, G&L, G&L, NM, F & G Simms---JB M-V Rbty, J Smith, Nor-Dick, G&L, William-
 son---JD; G&L, G&L, Williamson, G&L; G&L---Blue SB; M-V, G&L; Williamson,
 Williamson, M-V,---SD; A Kelley, G&L, Nor-Dick, M-V, Nor-Dick---JB; Osmon, G&L, NM-
 JD; NM, M-V, M-V---Choc SB; NM, Nor-Dick, Osmon, Holcumbrink, Holcumbrink---SD;
 Holcumbrink, Holcumbrink, Holcumbrink, Holcumbrink---JB; Holcumbrink, Holcumbrink,
 Holcumbrink, Holcumbrink, nm---JD; Holcumbrink---Torts. SB; Williamson, Nor-Dick,
 Williamson, J Smith, Nor-Dick---SD; A Kelley, J Smith, Nor-Dick; Williamson,
 Williamson---JB; Schultz, Kelley, Nor-Dick, Schultz, Nor-Dick---JD; Schultz, Kelley,
 Nor-Dick, Nor-Dick, Kelley---Steel JB; Williamson---Gray SD; Williamson,
 Williamson---JD; F & G Simms---POINTS: Gilmore & Logan 462, Nor-Dick Rbty.223,
 Williamson (SAW) 212, M-V Rbty, Ev Corn 207½, Gary Holcumbrink 201, Alden Kelley
 179, Rusty Schultz 94, Jerry Smith 88, Art Osmon 51, Fred & Geneva Simms 16,
 W. Lorenz 0, Bloomquist Rbty. 0

MAY 1-2, 1982 Richland Co. RBA at Richland Co. Fairgrounds

Judge: Francis E. Morgan 22 Dutch 5 Exhibitors 1 NM---BOB Blue SD A&B Butler--
 BOS Steel SB Larry Nixon---9 Blk SB Wireman---6 Blue SD Butler---1 Choc SD Wireman--
 3 Tort SB Wireman---3 Steel SB Nixon---Points: Larry Nixon 97, Jack Wireman 48,
 Al & Barb Butler 80, Mike Stinehelfer 30

MAY 2, 1982 Quincy Area RB at Quincy, IL

Judge: Williamson, Scott 113 Dutch 19 Exhibitors 6 NM---BOB Blk JD G&L Rbty--
 BOS Choc JB G Holcumbrink---Blk SB 9; G&L, G&L, G&L, G&L, G&L---SD 9; NM, G&L,
 NM, J Smith, G&L---JB 8; Nor-Dick, M-V Rbty, J Smith, NM, NM---JD 7; G&L, G71,
 NM, G&L, G&L---Blue SB 9; G&L, NM, NM, NM, NM,---SD 13; Kelley, Nor-Dick, NM, G&L,
 M-V Rbty---JB 3; G&L, NM, Osmon---JD 3; M-V Rbty, NM, M-V Rbty---Choc SB7; Nor-Dick
 Holcumbrink, Osmon, NM, Holcumbrink---SD 7; Holcumbrink, Holcumbrink, Holcumbrink,
 Holcumbrink, NM---JB 12; Holcumbrink, Holcumbrink, NM, Holcumbrink, Holcumbrink---
 JD 1; Holcumbrink---Tort SB 5; Nor-Dick, NM, Nor-Dick, Lorenz, elim---SD 8; Nor-
 Dick, J Smith, W Giebelhausen, Kelley, NM---JB 6; Kelley, NM, Nor-Dick, Schultz,
 Nor-Dick---JD 5; Nor-Dick, Schultz, Nor-Dick, Kelley, Kelley---Gray JD 1; Simms--
 Best Blk: JD G&L---Best Blue SD A Kelley---Best Choc JB Holcumbrink--- Best Tort
 JD Nor-Dick---Best Gray JD F & G Simms---Points: Gary Holcumbrink 358½, Gilmore
 & Logan 491, Nor-Dick Rbty. 304, A.L. Kelley 145, Jerry Smith 74, M-V Rbty-Ev Corn
 72, Rusty Schultz 32, Art Osmon 30, Wayne Giebelhausen 24, Wm. Lorenz 10, Fred
 & Geneva Simms 6, Bloomquist Rbty. 0, Brenda Auxier 0

MAY 2, 1982 Red Cedar RBA at Rice Lake, WI

Judge: Ralph Pace 13 Dutch 4 Exhibitors 1 NM---BOB Blk JD R Brown---BOS Choc SB
 NM---8 Blk JD R Brown---1 Blue SD S George---4 Choc SD B Hoagland---Points:
 Robert Brown 53, Betty Hoagland 47, Steve George 26

MAY 2, 1982 Van Wert Co RBA at Van Wert, OH

Judge: Richard Allebach 39 Dutch 12 Exhibitors 6 NM---BOB Gray JD A Miller---
 BOS Blk SB R Fox---15 Blk SB Fox---7 Blue SD non-member---9 Choc SB R Shull---
 4 Tort SB NM---4 Gray JD Miller--- Points: Roy Fox 142½, Allan Miller 81, Larry
 Meiser 76, Reggie Shull 69, Sherrie L Creek 25, Judith Johnson 9,

MAY 2, 1982 Mid Iowa Rabbit Ass'n. at Fort Dodge, Iowa

Judge: Larry Bengtson 19 Dutch 4 Exhibitors All Non-Members

more, next page.....

MAY 2, 1982 Golden West RBA at Orange, CA

Judge: Forrest Harper 26 Dutch 6 Exhibitors 3 NM---BOB Blk SD S Martin---BOS
Tort SB S Martin---6 Blk SD Martin---9 Blue SD D Holland---6 Choc JD Martin---2
Tort SB Martin---2 Steel SB Martin---1 Gray SB D Holland---Points: Sandra Martin
233, Dave Holland 52, Mike & June Lovejoy 18

MAY 2, 1982 Michigan RS & Conv. Inc. at Hillsdale, MI

Judge: Terry Reed 21 Dutch 3 Exhibitors 1 Non Member---BOB Blk JD NM---BOS Blue
SB B Storey---6 Blk JD nm---6 Blue SB Storey---7 Choc JD Storey---1 Tort SD G.
Bowerman---1 Gray SB G Bowerman---Points: Betty Storey 141½, Greg Bowerman 30

MAY 2, 1982 Essex Co R & CBA at Topsfield, MA

Judge: Paul Jurgelonis 34 Dutch 6 Exhibitors 2 NM---BOB Blk JB P Sikorski---
BOS Blue SD Sikorski---17 Blk JB Sikorski---7 Blue SD Sikorski---6 Choc SB Sikorski
3 Tort SB Sikorski---1 Gray SB L Fowley---Points: Pat Sikorski 320, Donald Farris
62, Lissa Fowley 40, Pam Dunning 12

MAY 2, 1982 North Texas RBA at Dallas, TX

Judge: C.M. Carroll 30 Dutch 7 Exhibitors 3 NM---BOB Tort JB Reid's Rabbit Ranch
BOS Blk JD Reid's---15 Blk JD Reid's---4 Blue JB M Arent---4 Choc SB C & M Pipes--
3 Tort JB Reid's---2 Steel SD Reid's---2 Gray SB J Allen---Points: Reid's 218,
Muriel Arent 86, Charles Pipes 44, Jana Allen 25

MAY 2, 1982 East River RBA at Harrisburg, SD

Judge: Robert Evertson 45 Dutch 10 Exhibitors 4 NM---BOB Gray SD J Sundal,---
BOS Gray SB J Sundal---13 Blk SB J Bach---13 Blue SBnm---6 Choc SB D Freese---
3 Torts JD J Bach---1 Steel JD M Heftie---9 Gray SD J Sundal---Points: John Bach
191, Jon Sundal 105½, Robert Trudeau 61, Michele Heftie 45, Derrick Freese 28,
Chad Aspelin 24

MAY 2, 1982 Kiam-Egyptian RBA at Carbondale, IL

Judge: Stuart Griffith 12 Dutch 4 Exhibitors 1 NM---BOB Blk SB G Youngblood--
BOS Blk SD T Kleiboeker---6 Blk SB Youngblood---3 Blue JD Kleiboeker---2 Choc JB
Youngblood---1 Gray SB Youngblood---Points: G. Youngblood 68, T Kleiboeker 32--
Dave Schulte 15

MAY 2, 1982 Sunflower RBA at Derby, KS

Judge: Gordon Fry 15 Dutch 3 Exhibitors All Non-Members

MAY 2, 1982 Gaston Co. RBA at Hickory, NC

Judge: Owen Yates 3 Dutch 2 Exhibitors All Non-Members

MAY 8, 1982 Rabbit Fest '82 R&C Show at Copperas Cove, TX

Judge: Don Moncrief 31 Dutch 5 Exhibitors 3 NM---BOB Blk JD Reid's Rabbit Ranch-
BOS Tort JB Reid's---14 Blk JD Reid's---3 Blue JBE & D Smith---6 Choc JB nm---4
Torts JB Reid's---2 Steel SD Reid's---2 Gray JD E & D Smith---Points: Reid's
Rabbit Ranch 178½, Earl & Diane Smith 153

MAY 8, 1982 Emerald Valley RF at Cottage Grove, OR

Judge: Don Dopfer 18 Dutch 11 Exhibitors 6 NM---BOB Blk SD R Reser---BOS Gray
SB nm---9 Blk SD Reser---4 Blue JB R&J Hassenpflug---2 Choc SB Ilene Young---2
Tort (disq)=-1 Gray SB nm---Points: R & J Hassenpflug 44, Richard Reser 36,
Ilene Young 18, Greg & Debra Hickmott 16, Kay Braun 0

MAY 8, 1982 Mid-Counties RBA at Tipton, IN

Judge: Carl Filiater 20 Dutch 7 Exhibitors 3 NM---BOB Choc JB nm---BOS Blk JD
Diane Clute---8 Blk JD Clute---2 Blue JB Clute---10 Choc JB nm---Points: Ray
Rosing 80, Diane Clute 57, T.E. & Sandy Reed 32, David Klier 32

continued, next page.....

MAY 8, 1982 Florida West Coast R & CBA at Brandon Civic Center

Judge: Charlie Haaf 20 Dutch 10 Exhibitors All-Non-Members

MAY 8, 1982 Kaintuck RBA at La Center, KY

Judge: Harold Conrad 7 Dutch 2 Exhibitors 1 NM---BOB ? SB G Youngblood---BOS
? SD G Youngblood---2 Blk SD Youngblood---2 Blue JD nm---2 Choc JB Youngblood---
1 Gray SB Youngblood---Points: George Youngblood 46½

MAY 8, 1982 Lake Ontario RFA at Batavia, NY

Judge: Bram Van Velden 26 Dutch 7 Exhibitors 2 NM---11 Blk JB M Hall---8 Blue
SB L Kennedy---1 Choc Disq---4 Torts SB J Goodrich---1 Steel SB L Kennedy---
---1 Gray SD J Goodrich---Points: Laing Kennedy 103, Howard French 79, Mark Hall 78,
Lester Hensel 16, Don Smith 12

MAY 8, 1982 Garden City RBA at Missoula, Montana

Judge: Scott Williamson 13 Dutch 3 Exhibitors 1 NM---BOB Choc SD E. Houseman---
BOS Tort SB E Houseman---5 Blk SD P & J Farmer---3 Blue SB Pat & Judy Farmer---
4 Choc SD E Houseman---1 Tort SB Houseman---Points: Ellis Houseman 57½, Judy
Farmer 51

MAY 8, 1982 Western MI RBA at Hudsonville, MI

Judge: Marvin Kroening 13 Dutch 3 Exhibitors 1 NM---BOB Choc SB NM---BOS Blue
SD Marti Dill---3 Blk SB B Storey---5 Blue SB B Storey---5 Choc SB NM---Points:
Betty Storey 78, Marti Dill 24½

MAY 8, 1982 South Texas RBA at Yoakum, TX

Judge: Matt Kevil 7 Dutch 2 Exhibitors 1 NM---BOB Tort JD D & N Brady---BOS
Tort SB D & N Brady---1 Blk Elim---6 Torts JD Erady---Points: D & N Brady 62½

MAY 8, 1982 Indianhead RBA at St Croix Falls, WI

Judge: Don Reid 24 Dutch 6 Exhibitors 4 NM---BOB Blk SB J Bach---BOS Tort SB
J Bach---11 Blk SB Bach---7 Blue SB Bach---2 Choc SB Bach---3 Tort SD Bach---1
Gray JD NM---Points: John Bach 163, Robert Brown 38

MAY 9, 1982 National Capitol RBA at Gaithersburg, MD

Judge: Jack Pugh 26 Dutch 5 Exhibitors All ADRC Members
BOB Blk SD T Hadaway---BOS Blk SB T Hadaway---15 Blk SD Hadaway---2 Blue SB Lucky
Foot Rabbitry---3 Choc JB K Pecaric---4 Tort SB E Woods---2 Gray JB C Marino---
Points: T Hadaway 132, Kim Pecaric 86, Lucky Foot Rabty. (franco Jauregui & Beth
Bachschnid), Ed Woods 38, Carl Marino Sr. 12

MAY 9, 1982 Tri-State RBA at Evansville, IN

Judge: Harold Conrad 34 Dutch 10 Exhibitors 2 NM ---BOB Gray SB G Youngblood---
BOS Choc JD C Wallace---10 Blk SD Youngblood---4 Blue SB B Campbell---12 Choc
JD Wallace---4 Tort JB R Wolfe---2 Steel JD C Wallace---2 Gray SB Youngblood---
Points: G Youngblood 118, Craig Wallace 95, Bill Campbell 52, Steve Smith 28,
Greta Wuest 28, Roy Wolfe 26, Phillip Smith 24, Fred & Geneva Simms 15

MAY 9, 1982 Columbus RBA at Franklin Co. Fairgrounds

Judge: Dr. T.E. Reed 71 Dutch 13 Exhibitors 2 NM
BOB Steel SB G & J Schill---BOS Blue SD Barb & Al Butler---25 Black SB Schill---
21 Blue JB Schill---13 Choc SD Schill---5 Tort SB R & R Billups---2 Steel SB
Schill---5 Gray SB G Frisby---Points: Butlers 147½, G & J Schill 382, Andy Barton
99, Kevin Hooper 107, R & R Billups 99, Glenn Frisby 57, Sherrie Creek 45,
Joe Frizzell 43, Larry Meiser 33, Judith Johnson 24, Vicki Bogan 9

more, next page.....

MAY 9, 1982 Cumberland County RBA at Cumberland, ME

Judge: Richard Kuehnle 19 Dutch 5 Exhibitors 3 NM---BOB Blue SB L Fowley---
BOS Choc SD L Fowley---5 Blk JD D Farris---1 Blue SB L Fowley---2 Choc JB Fowley---
9 Torts SD nm---2 Gray SB Fowley---Points: Lissa Fowley 72½, Donald Farris 65

MAY 9, 1982 Garden City RBA at Missoula, Montana

Judge: Gibb Johnson 12 Dutch 4 Exhibitors 2 NM---BOB Choc SD E Houseman---BOS
Tort SB E Houseman---5 Blk SD Judy Farmer---1 Blue SB Farmer---5 Choc SD Houseman
1 Tort SB Houseman---Points: Judy Farmer 54, Ellis Houseman 36

MAY 9, 1982 Polk Co RBA at Adel, IA

Judge: Robert Wallace 19 Dutch 4 Exhibitors 1 NM---BOB Blue JD D Paul---BOS
Blue SB D Paul---7 Blk SD Mixdorf---10 Blue JD Paul---1 Tort JD Mixdorf---
1 Gray SD Mixdorf---Points: Dave Paul 104½, Mixdorf Rbty. 103, Robert Trudeau 30

MAY 9, 1982 Polk Co. RBA at Adel, IA

Judge: Robert Wallace 7 Dutch 2 Exhibitors Both Members---BOB Blue SD D Paul-
BOS Blue SB D Paul---2 Blk SD D Paul---5 Blue SD D Paul---1 Gray SD Mixdorf---
Points: Dave Paul 52½, Mixdorf Rbty. 22

MAY 15, 1982 Mid Valley RBA in Washington NONE SHOWN

MAY 15, 1982 South Plains RBA at Lubbock, TX

Judge: Weldon Wahl 46 Dutch 8 Exhibitors 4 NM---BOB Blk SB B Berry---BOS
Blue SD L Hyer---9 Blk SB B Berry---7 Blue SB Hyer---5 Choc SD M Sutton---4 Torts
SB Hyer---4 Steel JB Hyer---17 Gray SB B Berry---Points: Larry Hyer 219, Bob
Berry 201, Patty Romine 146, Michael Sutton 24

MAY 15, 1982 Lawrence County RBA at Lawrenceburg, TN

Judge: Norma Simbeck 18 Dutch 7 Exhibitors 6 NM---BOB Blk JD NM--BOS Blue JB
NM---10 Blk JD NM--5 Blue JB NM---2 Torts JD NM---1 Steel JB NM---Points: Bill
& Carolyn Tuck 30

MAY 15, 1982 Springfield RBA at Ozark, MO

Judge: N.D. Hawkins 12 Dutch 2 Exhibitors 1 NM---BOB Blk JD G&L Rbty.---BOS Blk
SB G & L Rbty.---9 Blk JD G & L---3 Blue SD G & L---Points: Gilmore & Logan Rbty.
149

MAY 15, 1982 Borderline RC at Cambridge, MN

Judge: Darrell Bramhall 27 Dutch 7 Exhibitors 3 NM---BOB Blk SD J Bach---BOS
Choc SB J Bach---13 Blk SD Bach---7 Blue SD J Liebnow---2 Choc SB Bach---3 Tort SD
Bach---2 Gray JB Bach---Points: John Bach 165½, Robert Brown 55, Wm Niebuhr,
Jodi Liebnow 6

MAY 15, 1982 Trinity Valley RBA at Fairfield, TX

Judge: Matt Kevil 39 Dutch 6 Exhibitors 3 NM---BOB Blk SD Reid's R R ---BOS
Blk JB E & D Smith---18 Blk SD Reid's---6 Blue SD Smith---7 Choc SB Smith---3 Tort
JB Reid's---2 Steel SD Reid's---3 Gray JB Smith---Points: Earl & Diane Smith 215½,
Reid's Rabbit Ranch 161, Muriel Arent 77

MAY 15, 1982 Clackamas Co RBA at Canby, OR

Judge: Jan Coffelt 31 Dutch 20 Exhibitors 13 NM---BOB Blue SB R & J Hassenpflug-
BOS Blue SD nm---18 Blk SB nm---6 Blue SB Hassenpflug---2 Choc SB I Young---3 Tort
JB I Young---1 Steel Disq---1 Gray SD nm---Points: R & J Hassenpflug 71, Greg
Hickmott 60, Ilene Young 32, Sandi Wright 28, Bob Gibson, 20, Kay Braun 15, Steve
Tuma 8

MAY 15, 1982 Bluegrass RBA at Shelbyville, KY
 Judge: Harold Conrad 31 Dutch 6 Exhibitors 1 NM---BOB Blk JB M Blunschi---
 BOS Blue JD Blunschi---12 Blk JB Blunschi---9 Blue JD Blunschi---7 Choc JD F & M
 Whittet---3 Gray SB M/M N Frisby---Points: Martin Blunschi 152½, M/M Nathan Frisby
 100, B & C Campbell 58, F & M Whittet 42, Greta Wuest 35

MAY 16, 1982 Nebraska R & CBA at Springfield, NE
 Judge: Cecil Green 4 Dutch 2 Exhibitors 1 NM---BOB Blk SB R Evertson---BOS Blk
 SD Evertson---2 Blk SB Evertson---1 Blue SD nm---1 Choc JD Evertson---Points:
 Robert Evertson 24

MAY 16, 1982 Cincinnati RBA at Cincinnati, OH
 Judge: George Judy 18 Dutch 7 Exhibitors 2 NM---BOB Blue SB B Campbell---BOS
 Choc JB F Whittet---6 Blk SB Campbell---6 Blue SB K Bogan---5 Choc SB F Whittet--
 1 Steel SD J Eimermacher---Points: Bill Campbell 66, Lawrence Meiser 40, Kevin
 Bogan 38, Fred Whittet 35, Jim Eimermacher 18

MAY 16, 1982 Salt City RC at Hutchinson, KS
 Judge Marvin Cole 14 Dutch 4 Exhibitors ALL Non-Members

MAY 16, 1982 North East Ohio RFA at Ashtabula, OH
 Judge: Frances Morgan 14 Dutch 6 Exhibitors 4 NM---BOB Blk JB Butlers---BOS
 Blue JD Butlers---6 Blk JB Butler---7 Blue JD Butlers---1 Tort SB M Powers---
 Points: Al & Barb Butler 95, Mary Powers 14

MAY 16, 1982 Ohio River Valley RBA at Clairsville, OH
 Judge: Harry Fisher 28 Dutch 4 Exhibitors 1 NM---BOB Blue SD M E Unterzuber---
 BOS Blk JB Unterzuber---13 Blk JB Unterzuber---7 Blue SD Unterzuber---4 Choc SD P.
 Holcombe---3 Tort SB NM---1 Gray SB Holcombe---Points: Mary E Unterzuber 191,
 Phillip Holcombe 105, Dale & Matt Valentine 42

MAY 16, 1982 Southeastern RC at Union Grove, WI
 Judge: Hank Zimmerman 9 Dutch 3 Exhibitors 2 NM---BOB Blk SB C Stanelle---
 BOS Blue SD Stanelle---4 Blk SB Stanelle---4 Blue SD Stanelle---1 Choc SD NM---
 Points: Chuck Stanelle 45½

MAY 22, 1982 Bernalillo County RBA at 4-H Center, NM
 Judge: Weldon Wahl 33 Dutch 6 Exhibitors 5 NM---BOB Steel JD W Carlton---
 BOS Blk JB W Carlton---12 Blk JB Carlton---7 Blue SB Carlton---2 Choc SB Carlton--
 6 Torts JD NM---3 Steel JD Carlton---3 Gray JD W Carlton---Points: W Carlton 335½

MAY 22, 1982 East Kentucky RBA at Greenup, KY
 Judge: Al Butler 83 Dutch 13 Exhibitors 2 NM---BOB Blk JB Frisby's Rbty---
 BOS Blue SD C Weber---32 Blk JB; (SB) Barton, Billups, Billups, Hooper, Meiser--
 (SD) Frisby's Rbty., Glenn Frisby, Hooper, Hooper, Whittet---(JB) Frisby's Rbty.,
 Barton, Frisby, Frisby, Holcombe (JD) Frisby's, Barton, Frisby's, Holcombe, NM--
 18 Blue SD (SB) Barton, Meadows, G Frisby, Meadows, Frisby's---(SD) C Weber,
 Meadows (JB) Frisby's, Whittet, Meadows---(JD) G Frisby, Frisby's, Meadows,
 Barton, T Henson---17 Choc JD (SB) Hooper, Whittet, Henson, Hooper, Elim.---
 (SD) L Meiser, Elim., Elim.---(JB) Billups--(JD) Whittet, Billups, Whittet,
 Holcombe, Frisby's---5 Tort SB (SB) Billups, Billups, Disq.---(JD) Meadows, NM---
 1 Steel JB (JB) Hooper---10 Gray SD (SB) Frisby's, G Frisby; Frisby's, Holcombe---
 (SD) Barton, Disq.---(JB) Frisby's--(JD) Frisby's, Frisby's, Hooper---Points:
 M/M N Frisby 407, R & R Billups 127, Andy Barton 184, K Hooper 121, F & M Whittet
 107, Glenn Frisby 102, Sue Meadows 92, Connie Weber 53½, Phillip Holcombe 44,
 Larry Meiser 27, Tommy Henson 23

MAY 22, 1982 Suburban Twins RC at Farmington, MN

Judge: Bob Koch 26 Dutch 5 Exhibitors 2 NM---BOB Blk SD J Bach---BOS Blue SB Wm. Niebuhr---11 Blk SD Bach---6 Blue SB Niebuhr---4 Choc SB Bach---4 Tort SD Bach---1 Gray JD nm---Points: John Bach 177, Wm. Niebuhr 69, Bob Brown 35

MAY 22, 1982 Southern Maryland RBA at La Plata, MD

Judge: Howard Keller 29 Dutch 8 Exhibitors 2 NM---BOB Blk SD L Thompson--- BOS Blk JB T Hadaway---18 Blk SD Thompson---4 Blue SB Hadaway---5 Choc SB Thompson- 1 Steel SD Thompson---1 Gray SB Thompson---Points: T Hadaway 104½, L Thompson 102, W Mc Namara 78, Beth Bachschmid & Franco Jauregui 76, Dawn Perkins 18, Lori Burke 18

MAY 22, 1982 Saginaw Valley R & CBA at Saginaw, MI

Judge: Dr. T.E. Reed 48 Dutch 8 Exhibitors 1 NM---BOB Tort SB A Micallef--- BOS Blk SD P Sheets---19 Blk SD Sheets---11 Blue JD Micallef---6 Choc SD B Storey- 8 Torts SB Micallef---2 Steel SB J & S Daugherty---2 Gray SD J & S Daugherty--- Points: Anthony Micallef 228, Patty Sheets 98, Mc Kinley Rbty. 91, Ehnis Rbty. 72, James & Sharon Daugherty 47, Betty Storey 59, Marti Dill 28

MAY 22, 1982 Delaware Do RC at Delaware, OH

Judge: Joe Frizzell 11 Dutch 1 Exhibitor ADRC member---BOB Blk SB G & J Schill- BOS Blue SD G & J Schill---5 Blk SB Schill---4 Blue SB Schill---2 Choc SD Schill-- 1 Gray SD Schill--Points: George & Jean Schill112½

MAY 22-23, 1982 Southeast LA RBA at Baton Rouge, LA

Judge: Charlie Haaf 46 Dutch 7 Exhibitors 4 NM---BOB Blk SD NM---BOS Tort JB D & D Parker---21 Blk SD NM---7 Blue SD D&D Parker---3 Choc SD D&D Parker---10 Torts SD Parker---2 Steel SB Parker---3 Gray SD NM---Points: David & Dixie Parker 314, Ron Frank 93, Jimmie Daniel 51

MAY 23, 1982 Mills County RBA at Glenwood, IA

Judge: Robert Wallace 14 Dutch 5 Exhibitors 2 NM---BOB Blk SD R Evertson--- BOS Blk SB R Evertson---7 Blk SD Evertson--2 Blue SB NM---3 Choc JD Martha Jackson 1 Steel JD M Heftie---1 Gray JD M HeftiePoints--Robert Evertson 57, Michelle Heftie 18, Martha Jackson 6

MAY 23, 1982 Waterloo Area RBA at Waterloo, IA

Judge: Scott Williamson 12 Dutch 5 Exhibitors 2 NM---BOB Blk JB M Johnson--- BOS Blk SD Mixdorf Rbty---6 Blk JB Johnson---3 Blue SB Mixdorf Rbty---2 Torts JD Mixdorf Rbty---1 Gray SB G Grimm---Points: Mixdorf Rbty. 78, Murl Johnson 18, Gary Grimm 6

YOUTH SHOW REPORTS

MAY 8, 1982 Cleveland Area RBA at Splendora, TX

Judge: Tex Thomas 13 Dutch 8 Exhibitors ALL NON MEMBERS

MAY 15, 1982 Brazoria Co 4-H RBA at Angleton, TX

Judge: Mike Withrow 19 Dutch 10 Exhibitors ALL NON MEMBERS

BEST IN SHOW

Yakima Valley RBA 4/17/82 16 Dutch--Jim & Bonnie Kelly Black SB

Fair City RC 4/25/82 48 Dutch---John Bach Black SD

Owatonna RC 5/1/82 43 Dutch---William Niebuhr Blue SB

SHOW SANCTION APPLICATION

Date of Show _____ ARBA Show Code No. _____ Youth
ARBA Show code No. _____ Open

Sponsoring Club _____

Location of Show _____

Show Secretary _____

Address _____

City- _____ State _____ Zip Code _____

Enclose \$8.00 for open and \$5.00 for youth and mail to Norma Hart, 190 N First Avenue, Coal City, IL 60416 c/o American Dutch Rabbit Club

Please apply for sanction at least 60 days before show date if possible.

THANK YOU!

ADRC Membership Fees

\$5.00 Single youth membership (under 18 years of age) - \$7.00 Single adult membshp

\$9.00 Husband/Wife membership - \$16.75 Single ARBA/ADRC combination adult membshp.

\$21.75 Husband/Wife ARBA/ADRC combination membership - \$9.75 youth ARBA/ADRC combo

NOTE* Memberships outside of the United States will be charged an additional \$4.00 to cover mailing expenses. (~~except Canada~~)

MEMBERSHIP APPLICATION

I hereby make application for membership in the American Dutch Rabbit Club, Inc., and enclose the amount for dues and fees. I agree, if accepted, to abide by the Constitution and By-Laws of this organization and to further the interest of the American Dutch Rabbit Club in every way possible.

Name _____ Date _____
Adult _____ Youth _____ Age _____

Street Address _____ Box No. _____

City _____ State- _____

Zip Code _____

New _____ Renewal _____

Recommended By _____

MAIL TO: Norma Hart, Secretary-Treasurer

c/o American Dutch Rabbit Club

190 North First Avenue


Coal City, Illinois 60416

EASTERN DUTCH RABBIT FANCIERS

"An Organization of Dedicated Fanciers"
 "ALWAYS WILLING TO ACCEPT NEW FANCIERS"

Annual Spring & Fall Trophy Shows, Newsletter
 Dues \$2.00 per year

President: Bill Geitzenauer Vice-President: Dan Rohrer, Jr.
 Directors: George Strahler, E. D. Smith, Jean Schill,
 Jennifer Gioielli, Larry Thompson
 Secretary: Barbara Gioielli 1503 Lincoln Street Catasauqua, Pennsylvania
 18032

<p>E.D. SMITH 6/82 Box 239, Jonadab Road Yorktown, VA. 23490 Phone: 804-898-3473 DUTCH, ALL COLORS</p>	<p>MYRL MILHAHN 6/82 480 Green Street Constantine, MI 49042 BLACK BLUE CHOCOLATE TORTOISE</p>	
<p>ROSALIE SPURLOCK 8/82 1026 Harrell Ave. Frostproof, FL. 33843 Phone: 813-635-4690 LOPS ENGLISH SPOTS DWARFS DUTCH REX</p>	<p>SANDY ACRES RABBITRY 6/83 Jesse & Sandy Gregory 3312 East 56th. Hutchinson, KS. 67501 Phone: 316-669-8878 BLACK, BLUE, CHOCOLATE AND GRAY DUTCH BLACK SATINS STANDARD CHINS</p>	
<p><i>Keith</i> 6/82 <i>McNinch</i> Box 319 Sinclair, Wyoming 82334 NEW JUDGE ARBA DUTCH GRAY & STEEL</p>	<p>TIMBER BLUFF 6/82 RABBITRY Diana & Jenny Chezem Rt. 9, Box 160 Sparta, Tennessee 38583 Ph: 615-935-5085 or 935-8350 DUTCH BLACK BLUE REX-White, Opal, Br., & Chin SIAMESE SATINS</p>	

JUDGES AND REGISTRARS

<p>GARY R. GRIMM 4/83 RT. 3, MARION, IOWA 52302 PHONE: 319-393-2958 ARBA JUDGE</p>	<p>REGISTRAR 6/82 LAWRENCE E. THOMPSON 2111 BETHEL ROAD FINKSBURG, MD. 21048</p>
<p>REGISTRAR 3/83 RICHARD GEHR 190 NORTH FIRST AVENUE COAL CITY, ILLINOIS 60416</p>	<p><i>RENT ME!!</i></p>

PUBLICITY ITEMS

NAME _____

ADDRESS _____

CITY _____

STATE _____

ZIP _____

NAME OF ITEM	HOW MANY?	SIZE	COLOR	PRICE
Name & Address Book	1.25			
Pedigree Book (40)	3.25			
Arm Patches -Blk, Bl., Choc	3.00			
Felt tipped Pen (Blue or Black)	1.00			
Scratch Pads (w/emblem)	1.25			
String Tie with emblem	2.00			
Dutch Decals 65¢ ea. or 3/	1.50			
Judging Dutch Books	1.25			
Cups (w/emblem)	3.75			
Split Ring Key Fob	1.75			
Caps (Dutch Motto)	5.50			
Jackets (unlined) Royal Blue or Maroon	28.00			
Jackets (lined) Royal Blue or Maroon	36.00			
"T" Shirts (Dutch & Motto) Childs S-M-L White or Blue	5.50			
"T" Shirts (Dutch & Motto) Adults S-M-L-XL White Only	5.50			

NEW ITEM: Lapel Pins (Dutch) TOTAL:
 Blk, Blue or Choc. \$2.00 each.

Mail this order blank along with your check or money order to:

Barb & Al Butler
 4310 Richville Drive SW
 Canton, Ohio 44706

"PROMOTE THE DUTCH"

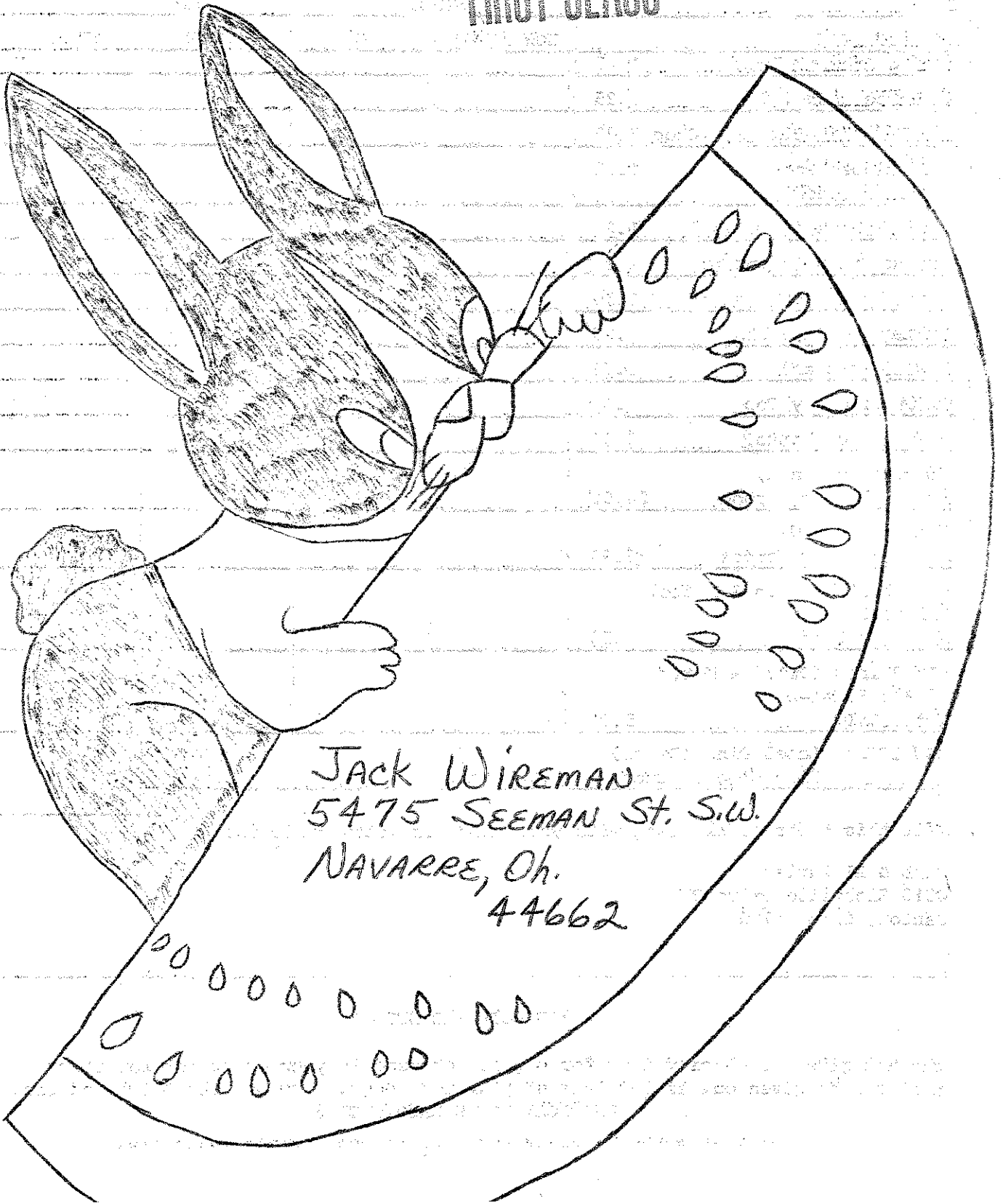
Why not give a publicity item for a gift or send in your order now for items that can be given out as specials at your next show. Promote the Dutch and the:
 "AMERICAN DUTCH RABBIT CLUB"

THE DUTCH REPORTER

American Dutch Rabbit Club, Inc.
Norma Hart
190 North First Avenue
Coal City, Illinois 60416



FIRST CLASS



JACK WIREMAN
5475 SEEMAN ST. S.W.
NAVARRE, Oh.
44662