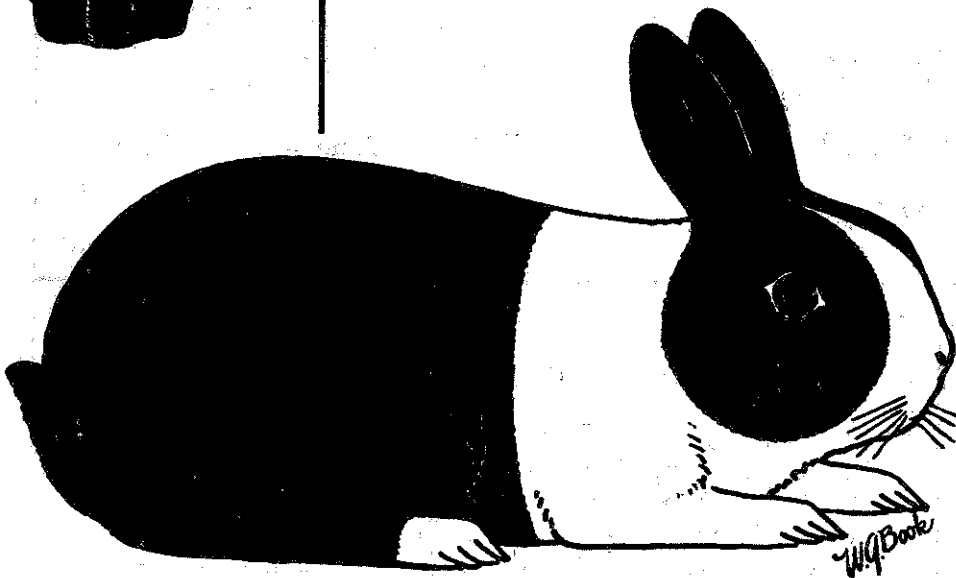


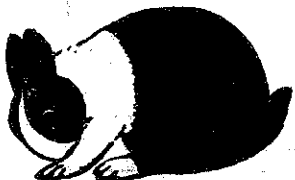
JUNE
60

The Dutch Reporter



DEVOTED TO THE INTERESTS OF THE
BREEDERS OF DUTCH,

America's Finest Rabbit
Membership List



American Dutch Rabbit Club

JUNE 60

JESS WILLIAMS

DISTINCTIVE DUTCH

BLUE, BLACK
TORTOISE & CHOCOLATE

BICKLEY'S BUNNYLAND

D U T C H

2801 West Lincoln,
Phoenix, Arizona

E. C. BICKLEY
1019 Perry St.,

SANDUSKY, OHIO
Phone: MA 6-1031

I LIKE TO BE IN
"DUTCH"

WOULD YOU? IF SO, I'VE GOT SOME
ALSO RUBY-EYED POLISH.

BILL STEEDMAN
NEWFANE, NEW YORK

WALT

ANNA

COOK'S
RABBITRY

BLACK CHOCOLATE BLUE
STEEL GRAY
GOLD - DUTCH

Blue - Eye Polish
4910 S. 43rd. St.,

Milwaukee 15, Wisconsin

LASALLE RABBITRY
DUTCH

BLACK - BLUE - CHOC.
TORTOISE

RUBY-EYED POLISH

22357 E. 15 Mi. Rd.,
MT. CLEMENS, MICHIGAN

HERE IS WHAT THE JUDGES SAY!

"Best Display, Steel - National Conv. Springfield.
Best Sr. Chocolate, National Conv. Springfield.
Best Chocolate - National Dutch Show - '59.
Best Display Dutch---Eastern Convention - '59.
Best Chocolate - Eastern Dutch Show - '59."

JIMMY SINCLAIR,

Rt. #4 - Box 427
Salem, Virginia

HULDA'S RABBITRY

CAMP ROAD, HURON, OHIO

BLUE CHOCOLATE BLACK

GOOD BLOODLINES

FOR BREEDING AND SHOW.

SMITH'S RABBITRY
BREEDER --- EXHIBITOR

CHOCOLATE
BLACK - BLUE
D U T C H

Blue-Eyed Polish

ELMO C. SMITH

302 East Orchard Ave.,
COUNCIL BLUFFS, IOWA

2096 PC

The Dutch Reporter

Devoted to the interests of the breeders of Dutch, America's Finest Rabbit
American Dutch Rabbit Club

June 1960

DUTCH FUROR

by J. Russell Hall
 Publicity Director

Another "old-timer" in length of club membership is Grace Craig (Mrs. Harry E.) Staneart. Grace started raising rabbits over 44 years ago with a Black Belgian as a pet for her daughter. Since then she has raised all breeds except Angoras and Flemish Giants.

In 1940 she started showing rabbits, and at Muncie, Ind. she entered a Chinchilla doe which came in 4th. in a class of 8, which made her very proud. During World War II Grace raised a good many rabbits, having a 600-head rabbitry. At first she had outside hutches, but now she has her hutches in a 40'x30' cement block building, with a room for feed storage, and a slaughter room below.

When the Indiana Dutch Club was organized by Ancel Beaver in 1946, they held an all-Dutch show at Grace's home, and she has had a sow every year since, except last year when there was sickness in the family. But she is counting on one, again, this year.

Grace has been secretary of the National Dutch Show three times, being awarded a plaque for outstanding service to the Indian State Dutch Club at Logansport, Indiana in 1956 at the National Dutch Show for which she was secretary. She is now secretary of the Indiana Dutch Rabbit Club. She has had ups and downs with her rabbits, and has been "cleaned out" by heat, dogs, and rats; but never gives up. She now shows nothing but Dutch, as she likes them best. She says that Dutch take up less hutch space and eat less than larger breeds. She can raise a Dutch to 3 lbs. quicker than any other breed with less feed; and a 3 lb. Dutch will dress out 2 lbs. of meat, which is the size most people want. Dutch also make nice pets for children, due to their size and being easy to handle.

As a final word, Grace says she is always ready to help anyone with their rabbit problems by giving information, or whatever she can.

YOU CAN'T BEAT THE DUTCH

SECRETARY'S CHIT-CHAT

by J. Weinhardt

Recently I have heard the rumblings of criticism regarding my very frequent quotations from the organ of our fellow Dutch Rabbit Breeders over the Atlantic, Inc.

OFFICERS

President; George Bayliss; P. O. Box 504, Hayward, California
 Vice-President; G. C. Leisenring; P. O. Box 762, Fostoria, Ohio
 Publicity Director; J. Russell Hall; 18 William St., Hornell, N. Y.

BOARD OF DIRECTORS

Tom Shufflebotham; Valparaiso, Indiana-----Clinton Dennis; Duncan, Oklahoma
 E. C. Bickley; Sandusky, Ohio-----Roger Eich; Templeton, Iowa
 William C. Stedman; Newfane, New York-----Jimmy Sinclair; Salem, Virginia

EDITOR & SEC'Y.-TREAS.—Mrs. W. A. Weinhardt, 17990 Bethel Church Rd., R #3, Manchester, Michigan

Opinions expressed in articles and letters published in the Dutch Reporter do not necessarily represent those of the American Dutch Rabbit Club, the Editor or the Publisher.

The date your membership expires is shown on the address label of your Dutch Reporter. Dues \$3.00 per year. NOTE: Our Club is affiliated with the American Rabbit Breeders Association, Inc., and by sending \$5.75 instead of \$3.00, you will become a member of both Associations.

All material for the Dutch Reporter must be in the hands of the Editor by the 15th of the month preceding issue.

Please notify us immediately of any change in address so that you will not miss copies of the Dutch Reporter

"Fur and Reather". I am a bit at a loss to understand the reasoning behind such criticism for several reasons; one being that when our membership lets me and the American Dutch Rabbit Club down by failing to contribute interesting material for filling the pages of YOUR Dutch Reporter, I am forced to reach out in all directions for anything that I can find which I feel might prove of interest to the majority of our members. I can't help wondering if the "green eyed monster" is creeping in and we hate to admit that any ideas that did not have their conception in the minds of our compatriots are not worthy of consideration. Inasmuch as the basis of all education is the studying of the ideas of others and the selection of such points as might be applicable when used to our own purposes, it seems a bit narrow minded to me not to at least lend an ear to ANY idea that may be presented, no matter what its source might be. I, personally feel that I am more fortunate than most of our members in being privileged to read this fine publication, and hence am always ready and anxious to pass along any words that I feel would be of general interest, or could in any part be applied to our own problems.

I have the feeling of being permitted to sit at the feet of the masters in a sense. After all our original Dutch stock DID come from England, and these people have been breeding Dutch for shows long before most of us ever heard of them. They are, in fact, the REAL OLD-TIMERS. Of course there are bound to be novices among them even as here, but also there are those who have learned from the experiences of the old-timers and I think we would be very remiss not to pay a bit of attention to what they have to say.

At risk of garnering further criticism, I feel bound to report a few lines from the April 21st. issue of "Fur and Feather", which I feel carries the crux of our newest problem and gives a very concise and clear analysis of what we have been fretting about. Quote: "From time to time attempts have been made to inveigle the Dutch Club (UKDRC) authorities to consider some variation in the standard, but such has invariably been ignored. We Dutch breeders have absolute faith in a standard that has stood the test of time and which has always provided a challenge to the right type of breeders and exhibitors.

"there have been some loses but I see no reason for writing them into the standard; they can be rediscovered.

"Any standard worthy of the name should at all times prove a challenge, and any efforts made by individuals, or groups, who, unable to meet the challenge, desire the target lowering, should be firmly resisted by the custodians of the breed." end quote. These words were penned by the same Mr. A. D. Colbeck whose article I copied into the April issue of the Dutch Reporter, and it is my opinion that we could do worse than heed what he has to say.

Since the last publication I have received one donation of \$2.00 from Christine Loverde toward the new mimeograph machine which leaves a balance of \$31.00 still to be raised. Have you done your part?

How many of you have sent in your specials and/or ads for the 1960 ARBA Covantion? Time is slipping away. Please do it TODAY. Send your ad to W. D. Parsons; 4000 Beverly Dr., Waco, Texas and your specials to L. E. Settle; 2710 - 55th. St., Lubbock, Texas, or I will be willing to accept them, also.

You will find a sweepstake standing report, further along, on the old series which closed with the National Dutch Show at Harper, Iowa. However I cannot publish a final reconing of points until all show reports are in. I have show reports for three of these shows, but have never had catalogs for any of them. If anyone of you has shown at one of the following shows and would like to have your points counted, see if you can get me a copy of the catalog: Baltimore Cty. R&CBA, March 20, 1960, Decatur RBA, March 25, and York Cty. R&CBA, April 3, 1960. The following three shows I have had neither catalog OR show report, so if any of you have any influence with the secretaries, I would appreciate your help: Central Fla. RBA, Feb. 22-27, Portsmouth, Ohio, Feb. 27-28, and Council of Calif. ARBA Clubs, April 9-10, 1960. I have received quite a number of reports for shows in the new series and hope room will permit their inclusion in this issue.

A couple of notes in closing: It has been brought to my attention that there was an error in the show report for the Springfield, Ohio show in last month's Reporter. Mr. Maynard Roof should have had credit for placing Best Blue Dutch instead of Bickley as published.

Also I have had a letter from Mr. Richard F. Griggs and Ray Grunt, who are the Breed Chairman Committee for the 1960 ARBA Convention show, reporting that our choice of judges for that show have been accepted and both judges have agreed to serve. They are: George Bayliss, senior judge and Tom Shufflebotham, junior judge.

YOU CAN'T BEAT THE DUTCH

WE DON'T KNOW ALL THE ANSWERS - BUT WE TRY

Dear Mrs. Weinhart:

It's been quite a while since I've spoken with you but I wonder if you could squeeze in a little request in your spare time? Here's my problem: I'm trying to find the address of a man who raises Dutch in N. Y. state. All I know is his name and I wonder if you have him in your files. His name is Harold (Butch) May. (ED.'s Note: I was very happy to give Mr. Geitzenauer this information. JW) I would be more proud of our secretarial staff (This is the first time I've ever been called a whole staff. Thanks. JW) if you could help.

I like the new Dutch Reporter and especially the editorials. I was getting tired of reading show report after show report. We're supposed to have an educational type of newsprint and I love the articles written by men and women who have made good. I fairly read the print thru and try to obtain the writer's train of thought. Isn't there some way to entice breeders of good bloodlines to divulge their secrets to some of us who may need a little steering? I consistently run into problems above my scope. Here's one I can't quite figure out. I have a black doe and I've had her bloodlines for six generations and bred only black or blue to her. These black and blue bucks are also from my stock for at least 4 generations. Every litter, she has one off-color rabbit and it is either a gray or a steel, and always a buck. This has happened 4 times now, and I can't quite figure it out. Why only one, and where does it come from? The original line of her pedigree shows only black or blue.

Here's another question mark. Did you ever see a three colored rabbit? Blue cheeks, black rump, white shoulders and stops?

Bill Geitzenauer
Box 53, Blandon, Pa.

Answer by T. Shufflebotham, Ed. Chmn.

I am in receipt of your letter from our secretary, Mrs. Weinhardt. It makes the officers feel good when we receive such letters as yours, acknowledging the good work that they are all trying to do.

I don't know that I can be of too much help to you in your problem. There is one thing that is certain: Somewhere in your bloodlines, someone has done some indiscriminate breeding, and have not supplied correct pedigrees. It would be impossible for you to be getting any other color but blacks and blues out of black and blue breeding if you have 100% pure black-blue bloodlines. As I have stated many times before, what is bred in, is bound to come out. That is undoubtedly what has happened in your case. I have often stated that it is very important that you purchase your foundation stock from a reliable breeder who has a well established strain. This may seem like a poor statement to make, however, I have always felt that pedigrees don't mean a thing, anyone can make one out. It is the honesty of the fancier that you are dealing with that is all important. I am sure that in time you will be able to eliminate this fault by destroying the off-colored blacks and blues that you are getting. They do claim that this can be done in eight generations, however even after that they will be liable to pop up every once in a while.

Your question as to whether it is possible to get a three colored Dutch, black, blue and white - yes, I have seen this, but very rarely, and it is possible for them to be produced out of good, pure-bred color lines.

Dear Jessie:

We would like to have two Dutch shows a year, one in the spring and one in the Fall. Can we have them through our local club, or do we have to form a Dutch Club to sponsor them. I think we could have a show with 150 - 200 Dutch, but I think it would be hard for us to form another club as we have three clubs here now.

Jess Williams
2801 W. Lincoln, Phoenix, Ariz.

Answer by Jessie Weinhardt, secretary, ADRC.

There is no rule limiting the number of shows held by any club in one year. If you should decide to form a State Dutch Specialty Club, however, you would be limited by ARBA rules to holding only an All Dutch Show.

YOU CAN'T BEAT THE DUTCH

FROM THE EDITOR'S MAIL-BAG

Why we like one-day shows:

Jess Williams, Arizona: We had our little one-day show last Sunday and I guess it was a big success. We had 327 head of Whites, Reds, Spots, Dutch, Cins and Satins. There were 87 head of Dutch, which wasn't bad for Phoenix. The secretary, Mrs. Grames had to go to the hospital four days before the show and her husband with the help of Howard Koski did a bang up job. I am all for one day shows. This was our third one and we have them int the Park with plenty of grass, trees and shade and a good crowd all day long. We cleaned up everything, including the pay-off by 5:00 o'clock, starting at 9:00 A.M.

I was out to the 4 H show at the fairgrounds today. There was lots of fat calves and hungry kids and 100 rabbits, which was pretty good for them.

Merle Emery, Ohio: I know you don't believe in these one day shows, but I have to go along with this one day show as it is the OSDC's only way of making money for specials in National Dutch Shows and ARBA Conventions. I would like to tell you how we work these shows. We get local clubs to donate building and coops at no cost to us. We do pay for bedding and electricity. The local club which donates the show facilities operates the lunch stand with all profit going to them. These shows are cooped and advertised. This year the Ohio Californian club and Ohio Dutch clubs have gone together so to say. Ohio Dutch will judge in the morning and hold their meeting in the afternoon. Ohio Cal. will hold their meeting in the morning and judge in the afternoon. No rabbits of either breed will be released until all rabbits have been judged, which we figure will be about 6:00 P.M. or later. A person interested in either breed will have an opportunity to see the rabbits judged, sit in on a state meeting and talk to the breeders of both breeds. They can see for themselves why a fancy can be a commercial as well as a commercial can be fancy.

I also like one-day shows in the summer-time for the heat is hard on a rabbit and one-day in show coops isn't as hard as two or three. In the fall, winter and spring you can't beat a 2 or 3 day show, especially if you have won on Saturday, you can throw your chest out on SudaY, or if you lose you can see what beat you and see what you have to do to improve on for the next show. Also, not to mention the good times on Saturday night where the breeders get to judge the judges and have a good bull session.

Lower weight on Dutch?

Paul W. Sarvey, Beaver, Pa: I saw in the Dutch Reporter where some people think the weight should be changed to 3 lb. Boy, they sure are crazy! Why don't we make the Dutch just another variety of Polish and be done with it? I really can't see where 1/2 lb. is going to help out the weight, anyway, so why not just leave it as it is?

Maynard Roof, Ohio: Received the "Dutch Reporter" today. It is so seldom that I am home that I just read it cover to cover.

First, it is a pleasure to read it well reporduced. Second, and most important, is the Dutch standard. I have been exposed to show stock since a small child because my early memories are mf my dad's echibition chickens. Later rabbits - New Zealand Reds, Whites, Checker Giants, Flemish, English Spots to mention some that

have been in the family. My dad always was and still is a fancier, so I grew up under that type of training.

When he retired we started again. I bought and handcarried some of the best Californians from California by air to my home. They have, however, gone by the way in favor of black and blue Dutch exclusively because dad and I are both fanciers and proud of it. I certainly hate to see the Dutch being classed as commercial rabbits because soon the emphasis will be on commercial qualities and size rather than fancy characteristics.

Personally we are satisfied with the standard as it is. We are definitely against raising the 5 1/2 lb. limit. Further, if enough pressure comes to lower the standard from 3 1/2 lbs. to 3 lb., it should be for bucks only. Does should remain at 3 1/2 lbs. minimum. Other breeds have different weight for bucks and does so maybe this is a compromise if something has to change.

Oscar F. Schultz, Conn.: I have just received my copy of the Dutch Reporter and as usual I read it from cover to cover. I have two things on my mind - one is the weight on Dutch and the other is the Dutch as a Commercial Rabbit.

As far as weight is concerned I hope they do not change the weights on Dutch.

As far as the Dutch being a Commercial Rabbit, I never considered them as such until a few years ago and the thing that changed my mind was a visit to Oliver Milliken's Rabbitry in Tampa, Florida. Mr. Milliken is a retiring sort of man who does not argue with anyone, but is one who knows how to raise rabbits and keeps records of everything he does and knows what he is talking about. Some of you know that I spend most of my winters in Florida and all I do while I am there is visit rabbitries and attend shows. I have been to Mr. Milliken's house a good many times and some of the things he told me at first, I did not think could be true, so I decided to check his records. I spent two days checking his record, weighing litters at all ages, weighing does and bucks and found all of his records correct. He does not do anything but raise and sell rabbits and covies and I must say he lives good, has raised a family, has a very fine wife, and a nice home, and it all comes from rabbits and covies.

Most breeders of rabbits have always considered the Dutch as a fancy breed - that is alright, but Mr. Milliken has put Dutch rabbits on the table of a great many people. In dressing the Dutch in most cases, they will dress out a larger percentage of meat than the heavier breeds. Some of you will say, "Who will buy a 1 1/2 lb. dressed fryer?" Well, Mr. Milliken has no trouble disposing of all he raises and buys quite a few besides, and pays a premium for Dutch.

I wish Mr. Milliken would write more for the Dutch Reporter and I can assure you that anything he writes, he has records to prove it.

This and that: Animal Directory Service; Box 705, Portsmouth, N. H.: Our new SMALL ANIMAL DIRECTORY has just been completed. This directory contains over 1000 names of persons connected with the small animal business in some way - dealers, buyers, equipment and feed manufacturers, commercial and federal hospitals, laboratories, trade journals, etc.

The SMALL ANIMAL DIRECTORY is offered in the April issue of "Small Stock" for \$3.00 each postpaid. We are offering this Directory to A.R.C.B.A. clubs at \$2.00 each in quantities of 6 or more.

The SMALL ANIMAL DIRECTORY is a must for all who are interested in the small animal business. This Directory is nation-wide in scope.

YOU CAN'T BEAT THE DUTCH

BACK AGAIN!

by J. R. Hall

In 1947, and again in 1949 the 3 lb. minimum weight was discussed very thoroughly by our members, both pro and con, in the "Dutch Reporter", the majority favoring the 3 1/2 lb. weight. Then in 1953 the entire standard was revised and accepted by vote of the membership, with a 3 1/2 lb. minimum, a 4 1/2 ideal weight, and a 5 1/2 lb. top.

Now a certain few of the members again wish to change our standard. We have an excellent standard and ideals to aim for; and as yet no one has been able to match

those ideals in raising Dutch, by producing a perfect animal. The one pound spread on each side of the Ideal Weight gives all breeders some leeway. However I don't think that just because some of our breeders have a smaller Dutch in their hutches that we should revise our standard for their benefit.

The same goes for the larger Dutch. I sell my culls to the local laboratory, and many times they want a larger Dutch than I can furnish them. If I followed the line of thinking of the breeders who are clamoring for the weight reduction, I would yell to high heaven for an expansion of the upper weight limit. I know there are others who also would like it. Never-the-less, in fairness to all, I am solidly behind the idea of NO CHANGE in our Standard on the subject of weight.

YOU CAN'T BEAT THE DUTCH

WHY BRING THIS UP?

by Tom Shufflebotham

I really enjoyed my visit to the American Dutch Rabbit Club annual show in Iowa. We were all treated with the utmost courtesy - the show had a wonderful set-up and went off in splendid fashion. Good planning assured this.

However, I was disappointed when the members present voted to refer the question of lowering weight limits to the ADRC Standard Committee. This was brought before the club a number of years ago and the matter was defeated.

In the first place, we all went into Dutch because we like the breed - the standard was accepted by us and we still are trying to produce the perfect specimen to that standard. I, myself have always felt that the challenge in Dutch breeding was to fit the animal to the standard and not to fit the standard to someone's animals.

At present interest in Dutch is at a peak - there has never been more interest shown outside our club, and hardly a day passes that someone does not request information about them.

Presently the Dutch is winning acclaim, not only in the fancy pens, but also as a commercial competitor in the fast growing fryer market. It has long been an outstanding animal as a fancy and exhibition item - but the fact remains that many of the rabbits produced do not find their way to either the show tables or the breeding pen. This means that you either eat or send the culls to market.

Lowering the weight limits on the Dutch would be a gross error as it would take them out of the fryer market and put them on a par with the Polish rabbit or the bantam chicken, too small.

I feel that the article in the May Reporter by Mr. Collins was very timely and to the point. Since reading this item I have had the pleasure of discussing this pertinent matter with Judge Oliver Milliken, a member of both the ADRC and the Florida Dutch Club. First of all let me fill you in on Judge Milliken - he is a transplanted Hoosier from South Bend, Indiana, now living in Florida. I have known him personally for the past thirty years and he has always been a breeder of Dutch. For a good many years he has made a living from his rabbits and has always kept accurate records and knows what he is talking about. He vouched for everything said by Mr. Collins one hundred percent!

The Florida Dutch Club voted \$50.00 to Mr. Milliken to further his experimental venture, to push the Dutch as an all around commercial and fancy animal and one that can hold its own with any of them. He has made complete comparisons with the Dutch and several of the commercial breeds and has all of the facts and figures to prove that YOU CAN'T BEAT THE DUTCH when it comes to feed conversion and cost per pound. Mr. Milliken even offered to furnish feed and equipment to conduct a certified test against one of our best known commercail breeders and processors - and was turned down!

In tampering with the weight standard what would we stand to gain? We would have much to lose!

At the ADRC show in Harper, they did one thing that should be done at all shows. They weighed every Dutch before it was penned and the weight was marked on the coop tag. I feel that this is a good procedure as it takes the judge off the hook and he does not have to argue with the breeder. The rabbit either conforms to the weight standard, or it does not - its variant is either above or below the standard of per-

fection. I feel that if all judges had been judging to the standard of our rabbit that this question of weight would never have come up - but too many of them have been favoring the light weight animal. This confuses the breeder and exhibitor.

I know that you cannot judge type on the scales and I know that you can have an excellent typed Dutch at 3½ pounds and you can also have an excellent typed Dutch at 5½ pounds. We should not lose sight of the fact that both are equal in regard to weight as a factor in placement - one is a pound over and the other is a pound under the standard of perfection. Let's try to make them as near the standard as possible.

Bear this in mind, if the question comes up for a membership vote - what are you going to do with your underweight Dutch culls? Also that a vast majority of all Dutch littered are culls that have to be disposed of and that a good many breeders must make their rabbits at least pay their way. It is just as hard to breed a 4½ pound Dutch as it is to breed a 3 pound one!

I do hope that Dutch Club members do not take this bid to lower our standard requirements too lightly - when it comes to a vote, vote, but think before you do so.

YOU CAN'T BEAT THE DUTCH

AMERICAN DUTCH RABBIT CLUB MEMBERSHIP LIST

SPECIAL NOTE: When you receive your ballot, later this month for the purpose of nominating your candidate for the office of Secretary and three Board Members, PLEASE check your choice against this list as many votes have been wasted in the past, by listing the names of persons who were not eligible to hold office. I am also listing the expiration date of each membership. If your dues expire before June 1st. YOU WILL NOT RECEIVE A BALLOT!

34

- Wm. H. Taylor; 521 Park Ave., Birmingham 9, Alabama 10-21-60
- Brick Goodman; 905 West 4th. Ave., Mesa, Arizona 1-27-61
- Michael Just; 8326 E. Thomas Rd., Scottsdale, Arizona 4-3-61
- E. R. Parks; R# 1 - Box 812, Glendale, Arizona 3-13-61
- Nicholas S. Romley; 2701 N. 21st. St., Phoenix, Arizona 6-30-62
- Jess Williams; 2801 West Lincoln St., Phoenix, Arizona 12-31-60
- Kenneth Matthews; P. O. Box 113, Dyess, Arkansas 3-3-61
- Mrs. George Bayliss; P. O. Box 504, Hayward, Calif. 12-6-60
- George Bayliss; P. O. Box 504, Hayward, Calif. 12-1-60
- Bruce Blair; 1738 West Rd., Whittier, Calif. 10-27-60
- Clipfort Rbtry; P. O. Box 623, Lucerne Valley, Calif. 7-28-60
- Homer D. Cook, Jr.; 355 Meadow Lane, San Jose, Calif. 6-12-60
- Harold Cooper; 5802 San Miguel Rd., Box 55, Sunnyside, Calif. 6-7-60
- Fred Cremer; 9704 Enger St., Bakersfield, Calif. 9-30-60
- Mrs. Marshall Fobes; 10208 - 60th. St., Mira Loma, Calif. 11-9-60
- Jack Gillis; 933 So. Douglas, Yucaipa, Calif. 1-10-61
- Susan Green; R# 1 - Box 230, Fairfield, Calif. 7-17-60
- C. E. Lewis; P. O. Box 174, Lincoln Acres, Calif. 10-14-60
- Durward D. Palmer; 1612 W221 St., Torrance, Calif. 11-16-60
- Elmer Paquette; 344 Acacia Rd., Santa Paula, Calif. 2-13-61
- Barbara Jean Patterson; 12408 Magnolia, El Monte, Calif. 12-29-60
- Donald L. Schmitz; R# 4 - Box 3070, Modesto, Calif. 10-8-60
- Robert Sprague; 3317 - 42nd. St., Sacramento 17, Calif. 9-30-60
- Wayne A. Sterner; 589 Apricot Ave., Campbell, Calif. 7-14-60
- Robin Day; Centennial Rd. N. Box 391, Highland Creek, Ontario, Canada 1-1-61
- K. Earle Richards; 8149 Yonge St., Thornhill, Ontario, Canada 1-19-61
- Kenneth Dorn; R# 1, Fort Morgan, Colorado 3-27-61
- Albert B. Herman; 5510 Niagara, Denver, Colorado 3-1-61
- Patrick P. Herman; 4666 Logan, Denver 16, Colorado 3-1-61
- T. Bobby Hughes; Ordway, Colorado 8-7-60
- Kathleen A. Hume; 891 So. Dale Ct., Denver 19, Colorado 3-29-61
- D. B. Meek; R# 2 - Box 210, Pueblo, Colorado 10-1-60
- Pierce Rbtry; 1025 E. 13th. St., Pueblo, Colorado 8-15-60
- Bill Summers; 502 Sevilla Drive, Colorado Springs, Colorado 12-3-60

Wares Rbtry; R# 2 - Box 260, Ft. Collins, Colorado 10-15-60
John Yearous; 202 So. Deuel St., Ft. Morgan, Colorado 3-12-61
Harry Anthony, Jr.; 120 Miller Ave., Meriden, Conn. 10-25-60
John M. Gearin; 15 Kenyon Place, East Hartford, Conn. 10-10-60
Oscar F. Schultz; Westport Ave., Norwalk, Conn. 10-13-60
Henry K. Zarges; 82 Fort Point St., E. Norwalk, Conn. 3-21-61
Glenwood C. Sturgis, Sr.; 1704 Newport Gap Pike, Wilmington 8, Del. 4-5-61
Glenwood C. Sturgis, Jr.; 1704 Newport Gap Pke, Wilmington 8, Del. 4-5-61
Pat DeFreytas; 5926 - 25 Ave., Hillcrest Hgts., Md., Washington 21, D. C. 1-27-61
Peggy Carter; R# 2 - Box 461, Lutz, Florida 8-3-60
James D. Collins; 3206 - 19th. Ave. W, Bradenton, Florida 11-15-60
Mr. & Mrs. Jesse Gardner; R# 2 - Box 195, Leesburg, Florida 11-13-60
Mr. & Mrs. W. B. Janes; 1709 E. Henry St., Tampa 10, Florida 1-13-61
Ken Wigner; P. O. Box 606, Bradenton, Florida 12-11-60
Mrs. Graham Latta; R# 6 - Box 34, Tampa 10, Florida 5-27-60
Rosemary Malott; 412 - 58th. St. NW, Bradenton, Florida 12-6-60
Mr. & Mrs. Oliver Milliken; R# 6 - Box 48, Tampa 10, Florida 5-18-60
Shirley McCullers; R# 3 - Box 555, Tampa 5, Florida 1-12-61
Mr. & Mrs. M. S. Nininger; P. O. Box 98, Land O'Lakes, Florida 11-4-60
C. W. Stinson; Hwy-42, Ellenwood, Georgia 1-28-61
Tom Bandstra; 3441 S. Schultz Dr., Lansing, Illinois 5-18-60
Bernise A. Bloomquist; Box 138, Sherrard, Illinois 9-16-60
Elbert Ferguson; Box 452, Cary Illinois 3-28-61
Walter C. Foulkes; 211 S. Second St., St. Charles, Illinois 1-24-61
Gene Gaither; Stanford, Illinois 2-13-60
John Hulva; 2014 Bloomington Rd., East Peoria, Illinois 11-12-60
Mrs. W. E. Lindsey; R# 3, Champaign, Illinois 9-3-60
Ed Merboth; R# 2, Box 58, Lanark, Illinois 1-23-61
Robert Miller; 607 Jefferson St., Oregon, Illinois 11-11-60
James Morris; Gardner, Illinois 2-20-61
Osmon's Rbtry; 11817 So. Harding, Chicago 43, Illinois 9-7-60
Curt Roseman; R# 3 - Box 38, Lake Villa, Illinois 9-27-60
Homer Trusner; Box 28, Elwin, Illinois 12-8-60
Don Reid; R# 1, Lockport, Illinois 9-12-61
A. Seeman; 411 Oakview Ave., Joliet, Illinois 9-10-60
Howard O. Allen; 819 W. 11th. St., Muncie, Indiana 5-20-60
Dr. Max Andrew; 1117 S. Clinton St., Ft. Wayne 2, Indiana 9-7-60
Lynn Battershall; R# 1, Roanoke, Indiana 10-9-60
Claude H. Bennet; 1136 - 4th. Ave., Terre Haute, Indiana 7-23-60
William E. Miller; 406 E. Rupel St., North Liberty, Indiana 10-3-60
James Bond; Box 32, Carlos, Indiana 3-20-61
Kelly F. Collins; 5229 E. 42nd. St., Indianapolis 26, Indiana 1-25-61
Mrs. Bernice L. Gardner; 3125 Central Ave., Indianapolis 5, Indiana 5-9-60
Stan Goeglein; 1202 Roosevelt Dr., Ft. Wayne, Indiana 4-7-61
Arthur Gruner; 1713 South Talbot St., Indianapolis 25, Indiana 3-26-61
Claude E. Hicks; 1801 S. Arlington Ave., Indianapolis 3, Indiana 4-8-61
Kenneth Kimball; 2855 W. 76th. St., Indianapolis, Indiana 3-3-61
Virgil Morton, Monroeville, Indiana 7-19-61
Alvin C. McKeeman; 5419 S. Hanna St., Ft. Wayne, Indiana 10-11-60
Julius R. Pleasants; Chief-of-hand-rearing, Lobund Inst., U. of Notre Dame, S. Bend
Indiana 11-4-60
Richard Pribbernow; 2803 Cambridge, Ft. Wayne, Indiana 4-25-61
Richard Shock; R# 1, New Castle, Indiana 6-30-60
Tom Shufflebotham; Box 257, Valparaiso, Indiana 3-11-61
Mrs. Tom Shufflebotham; Box 257, Valparaiso, Indiana 3-11-61
Mr. & Mrs. Harry Staneart; R# 2, Middletown, Indiana 4-20-61
Mary E. Stohrer; R# 1, Paragon, Indiana 10-11-60
Lester C. Wells; P. O. Box 13, Oaklandon, Indiana 4-24-61
Wm. T. Brinker; R# 2, Waterloo, Iowa 6-13-60

61

Melvin Dunsmoor; R# 1, Oskaloosa, Iowa 10-18-60
 Lavern Earles; 1720 So. 17th. St., Ft. Dodge, Iowa 7-19-60
 Michael Eich; Box 72, Templeton, Iowa 1-18-61
 Mr. & Mrs. Roger Eich; Box 72, Templeton, Iowa 1-18-61
 Don Guthrie; Box 26, Lamoni, Iowa 9-24-60
 E. A. Martinson; R# 3, Marion, Iowa 5-5-61
 C. Jay Miller; R# 2 - Box 1, Kalona, Iowa 12-16-60
 John Miller; Harper, Iowa 1-16-61
 John Planz; Audubon, Iowa; 6-19-60
 Elmo C. Smith; 302 E. Orchard Ave., Council Bluffs, Iowa 1-19-61
 Patrick Shirley; Mt. Vernon, Iowa 5-2-60
 Donald Wooden; R# 1, Essex, Iowa 5-8-61
 Dale Zentner; LuVerne, Iowa 5-2-61
 Mr. & Mrs. John B. Crawford; 12809 W. 63rd. St., R# 1, Shawnee, Kansas 2-8-61
 Robert L. Ernst; 301 E. First, Hoisington, Kansas 4-30-61
 Clayton Mantz; Box 19, Bushton, Kansas 9-9-60
 Walter Schroeder, Jr.; 2808 N. Lorraine, Hutchinson, Kansas 3-12-61
 H. V. Slusher; Lansing, Kansas 1-29-61
 Mrs. Chester L. Roberts; 4742 Parkview, Kansas City, Kansas 2-2-61
 Kathryn Gould; 2724 Bank St., Louisville, Ky 7-18-60
 Edward Toebe; R# 10 - Box 304, Louisville, Ky. 10-23-60
 Lawrence P. Daniels; 19 Beechwood Ave., Westbrook, Maine 4-23-61
 Lloyd L. Wills; R# 1, Skowhegan, Maine 7-30-60
 Delmas Cockey; 1323 S. Caton Ave., Baltimore 27, Maryland 3-16-61
 Austin Gaver; Finksburg, Maryland 9-3-60
 Carroll Haddway, Jr.; 510 Cannon St., Chestertown, Maryland 10-17-60
 Wm. T. Thompson; R# 2 - Box 372, Reisterstown, Maryland 8-24-60
 Mrs. Herbert Winand; Manchester, Maryland 8-11-60
 Ranald Belcher; 676 Summer St., East Bridgewater, Mass. 1-12-61
 Leo P. Chesnelivez; 178 Forge Rd., Westport, Mass. 1-26-61
 Mary Melody Cushing; 49 Auburn St., Saugus, Mass. 10-14-60
 Kenneth Delmore; 21 Roosevelt Dr., Southbridge, Mass. 6-25-60
 Alfred B. Handy; 31 Harvard St., Malden 48, Mass. 9-27-60
 C. A. Henry; 49 Auburn St., Saugus, Mass. 10-16-60
 Wayne F. MacKinnon; 604 Crescent St., Brockton, Mass. 9-10-60
 John O. Rod; P. O. Box 136, Templeton, Mass. 11-4-60
 Barnes Rbtry; R# 2, Burma Hwy., Morenci, Mich. 3-21-61
 Glen Buck; 32490 Van Born, Wayne, Mich. 8-16-60
 Corie Dalman; 10310 Gordon St., Zeeland, Mich. 5-16-60
 Paul Davies; 25 Fort St., Niles, Mich. 7-6-60
 Fuller's Rbtry; R# 5, Wauseon, Ohio 3-19-61
 Mrs. R. J. Grables; R# 2, 527 Sunset Dr., Milford, Mich. 4-30-61
 R. J. Grables; R# 2, 527 Sunset Dr., Milford, Mich. 11-13-60
 Gerrit R. Johnson; 236 Wall St., Zeeland, Mich. 9-20-60
 Ronald Inscho; 6560 Saline Dr., Waterford, Mich. 7-20-60
 George Kieback; 2011 Byrd Dr., Kalamazoo, Mich. 10-31-60
 Mike Kronk; 3401 Livernois; Detroit 10, Mich. 6-6-60
 Thomas E. McDaniel; 1710 Marsac St., Bay City, Mich. 5-12-60
 Leslie McInnes; 3511 First St., Hadley, Mich. 3-5-61
 Lester Gene Norton; R# 4, Freeman Rd., Eaton Rapids, Mich. 6-30-60
 John Nowak; 3135 Grant St., Saginaw, Mich. 5-23-60
 Lee Oelka; 6021 Newberry Rd., Wayne, Mich. 7-12-60
 Pakulski & Courtell Rbtry; 25278 Peter Kaltz, Warren, Mich. 9-5-60
 Lyle Pelkey; 7614 Jackson St., Warren, Mich. 6-15-60
 Jennie Roach; 770 Pensacola; Pontiac, Mich. 9-5-60
 Donald Rosiniski; 18467 Gaylord, Detroit 40, Mich. 8-29-60
 Clyde L. Smith; 6715 Faust, Detroit 28, Mich. 6-5-60
 Hartley Thomas; 8196 Fenton, Dearborn, Mich. 3-27-61
 Joe Weinhardt; 17990 Bethel Church Rd., R# 3, Manchester, Mich. 4-5-61

Mr. & Mrs. W. A. Weinhardt; 17990 Bethel Ch. Rd., R# 3, Manchester, Mich. 9-13-60
Raymond F. Wells; 2435 So. Main St., Ann Arbor, Mich. 5-17-60
Ray Willey; 22357 E. 15 Mi. Rd., Mt. Clemens, Mich. 2-17-61
Eugene E. Jacobsen; 7515 Wentworth Ave., Minneapolis 23, Minn. 1-12-61
Doris Leibel; R# 1, St. Paul 11, Minn. 3-12-61
Joseph L. Opsahl; 328 Cecil, Fergus Falls, Minn. 8-24-60
Mrs. Dorothy Otterhalt; 6849 Lakeview Dr., Circle Pines, Minn. 11-4-60
Hugo Planz; R# 5, Austin, Minn. 1-4-61
Richard Priebe; 3385 De Monterville Rd., No. St. Paul 9, Minn. 9-11-60
Tryggestad's Rbtry; 2503 - 33 Ave. NE, Minneapolis 18, Minn. 7-1-60
Ray Gentry; P. O. Box 6504, Jackson, Mississippi 10-18-60
John Furrer; 3439 Minnesota Ave., St. Louis, Missouri 12-1-60
Louis VanHorne; 1908 N. Kiger Rd., Independence, Mo. 8-12-60
Denny Mietzner; Box 185, Hildreth, Nebraska 12-10-60
Willow Rbtry; 107 Hillside Ave., Berkeley Hgts., N. J. 9-14-60
L. C. VanNess; 13 Park St., West Caldwell, N. Y. 5-10-60
Marcia Estabrook; 1105 Parsifal NE, Albuquerque, New Mexico 2-19-61
C. B. Groff; 127 Valley Dr., Valley Estates, Fairview, New Mexico 7-2-60
Bob Lushbaugh; 4493 Trinity Dr., Los Alamos, New Mexico 11-5-60
Bill Nygard; P. O. Box 1291, Santa Fe, New Mexico 4-22-61
Kenneth Avery; R# 3, Madison Hill, Wellsville, N. Y. 10-23-60
John Cuer; 82 Ridgecrest Rd., Rochester 15, N. Y. 10-18-60
Cordie DeLand; R# 2, Manlius, N. Y. 11-12-60
Fred Gottschalk; Rt. 49, Riverbend Rd., Pleasantdale, Troy, N. Y. 9-18-60
J. Russell Hall; 18 William St., Hornell, N. Y. 11-15-60
John S. Huppuch; Nelson Ave., Saratoga Springs, N. Y. 5-15-60
Cassandra Lape; 315 Washington Hwy., Snyder 26, N. Y. 6-2-60
Chas. O. Lewis; 247 Willow St., Roslyn Hgts., N. Y. 3-4-61
John Mellozzo; Hall St., Central Nyack, N. Y. 11-6-60
Earl J. Murray; 352 E. Main St., Waterloo, N. Y. 5-6-60
Merle Palmiter; Box 158, Avon, N. Y. 4-27-61
William C. Stedman; 150 S. Main St., Newfane, N. Y. 8-6-60
Fred & Judy Sykes; 28 Gouverneur St., Canton, N. Y. 7-26-60
Charles Williams; 402 Delaware Rd., Kenmore 17, N. Y. 8-6-60
Jack Woolnough; P. O. Box 766, East Hampton, N. Y. 10-23-60
Everett & Ailsa Wright; Delaware Ave., P. O. Box 283, Delhi, N. Y. 8-26-60
David K. Jennings; R# 1 - Box 71, Asheville, North Carolina 10-12-60
James H. Potter; Box 25, Snow Hill, North Carolina 9-14-60
Joe Baldauf; 614 Blanche Ave., Lockland 15, Ohio 3-19-61
Mr. & Mrs. E. C. Bickley; 1019 Perry St., Sandusky, Ohio 5-1-61
Jack Boughton; 3380 Mayfield Rd., Chesterland, Ohio 10-17-60
Sharon Buehler; 8634 Cheviot Rd., Cincinnati 39, Ohio 1-30-61
Deborah Burtless; R# 2, Ft. Byron, Ohio 10-17-60
Mr. & Mrs. Robert Crabbs; 669 Fuhrer Ave., R# 1, Lexington, Ohio 5-27-60
Elmer Courtright; R# 1, McComb, Ohio 4-2-61
Marie Downing; 17800 Marcella Rd., Cleveland 19, Ohio 8-8-60
Mr. & Mrs. Al Emery; 210 Marseilles Ave., Elyria, Ohio 12-9-60
Melvin C. Emery & Sons; 120 Hayes Ave., Elyria, Ohio 8-10-60
Mr. & Mrs. Merle Emery; R# 3, Elyria, Ohio; 11-7-60
Frank Geist; Box 49 - R# 3, Zanesville, Ohio 7-26-60
Harry Groner; 81 Perry St., Struthers, Ohio 11-3-60
Mrs. Isabel Heck; 8155 Broadwell Rd., Cincinnati 44, Ohio 3-19-61
Mr. & Mrs. R. M. Hickok; 287 N. Washington St., Delaware, Ohio 8-23-60
Grace Ann Hutchinson; R# 1 - Box 252, Monroeville, Ohio 2-24-61
John O. Hutchinson; R# 1 - Box 252, Monroeville, Ohio 7-17-60
James Kells; R# 3, Urbana, Ohio 6-13-60
Gerald C. Leisenring; P. O. Box 762, Fostoria, Ohio 3-6-61
Little Country Acre Rbtry.; R# 2 - Box 113, St. Paris, Ohio 10-12-60
Christine Loverde; 1118 W. North. St., Springfield, Ohio 4-26-61

67
 Don Lovejoy; R# 1, Morgan Rd., Jefferson, Ohio 2-14-61
 Al Meier, Jr. 4477 Emerson Rd., So. Euclid 21, Ohio 11-9-60
 Willard Miller; R# 3, Navarre, Ohio 4-30-61
 Jack Moore; 2988 Raymond St. NW, Greentown, Ohio 4-17-61
 Mr. & Mrs. Clarence Ohlemacher; R# 1, Camp Rd., Huron, Ohio 2-6-61
 Harry Rice; R# 1, Portsmouth, Ohio 19-17-60
 Maynard E. Roof; 160 Possum Rd. W, Springfield, Ohio 3-30-61
 Rex Russell; 107 Klingler Rd., Paulding, Ohio 9-30-60
 Betty Sargeant; 37543 Second St., Willoughby, Ohio 8-8-60
 Mr. & Mrs. A. E. Sautters; 1127 Garfield Ave. SW, Canton 6, Ohio 10-20-60
 Carl W. Schalip; 642 W. Church St., Galion, Ohio 5-5-60
 Harold H. Shingler; 4615 Ranchwood Rd., Akron 13, Ohio 2-19-61
 E. P. Shilliday; 5188 Eastover Rd., Cleveland 24, Ohio 11-27-61
 Al Snivley; 1500 Loretta, Columbus 11, Ohio 2-11-61
 Larry Spangler; 609 Apple Ave., Toledo, Ohio 5-10-60
 Erie Mahlke; R# 3 - Box 37, Wellington, Ohio 8-31-60
 David Maynard; R# 3 - Box 37, Wellington, Ohio 8-31-60
 Myron Stinhelfer; 426 Union Ave., Bucyrus, Ohio 10-11-60
 Mr. & Mrs. Harold Stokes; R# 1, West Liberty, Ohio 4-4-61
 Jack Turle; 1946 Edgewood Dr., Twinsburg, Ohio 6-22-60
 Dr. D. H. Volzer; 1821 Woodland Ave., Canton, Ohio 1-10-61
 Donald F. Weeks; R# 1, Highland, Ohio 1-18-61
 Jack Wireman; R# 1, Navarre, Ohio 3-14-61
 Beuford Cauthorn; R# 12 - Box 352A, Oklahoma City 15, Okla. 5-22-61
 Mr. & Mrs. Clinton D. Dennis; Box 641, Duncan, Oklahoma 12-14-60
 Dutch Sp. Club of Okla., Mrs. M. W. Hales, Sect'y, 4321 S.E. 55, Oklahoma City 15, Okla
 1-26-61

 J. C. Early; 520 E. Frank St., Norman, Okla. 6-5-60
 Wanda Hudson; R# 2, Marlow, Oklahoma 10-17-60
 George T. Marshall; Box 215, Dewar, Oklahoma 10-27-60
 J. C. Lowit; R# 2 0 Box 160, Troutdale, Oregon 8-29-60
 Guy Antonucci; 523 Allegheny Ave., W. Aliquippa, Pa. 10-16-60
 Joseph S. Billett; 187 N. Franklin St., Wilkes Barre, Pa. 5-9-60
 James Blyth; 4323 Murray Ave., Pittsburgh 17, Pa. 10-15-60
 Carl E. Decker, Jr.; 935 Clay Ave., Stroudsburg, Pa. 1-30-61
 Everett English; R# 4, Meadville, Pa. 6-25-60
 Carol J. Frees; Ridge Rd., R# 1 - Box 302, Spring City, Pa. 5-2-61
 William A. Geitzenauer; Box 53, Blandon, Pa. 4-8-61
 Mrs. Edwin P. Hall; R# 2, Quakertown, Pa. 2-18-61
 Alan R. Kacsur; 2353 Old Lincoln Hwy., Langhorne, Pa. 10-20-60
 W. H. Kennedy; 222 Soose Rd., Pittsburgh 9, Pa. 10-18-60
 Palmer R. Leader; 260 S. Pleasant Ave., Dallastown, Pa. 3-13-61
 Michael Mantsch; 3020 Marvin Ave., Erie, Pa. 3-19-61
 Jack Messner; Rothsville, Pa. 10-19-60
 R. E. Rice; R# 1, Smith's Ferry, Pa. 1-8-61
 Charles N. Shaffer; R# 2, Felton, York Cty, Pa. 5-12-60
 Harold Thayer; 1320 W. 34th St., Erie, Pa. 3-19-61
 Floyd Tobias; R# 3, Nazareth, Pa. 10-17-60
 Doris A. Verder; 1057 Bridge Rd., Cornwells Hgts., Pa. 3-22-61
 Frank Westley, Jr.; R# 18, Pottstown, Pa. 5-16-61
 Mr. & Mrs. V. K. Yates; 228 Brook St., Willow Grove 5, Pa. 5-23-61
 E. W. Zimmerlay; 1418 W. 31st., Erie, Pa.
 Walter H. Eaton, Jr. R# 2, Box 419, Cumberland, Rhode Island 11-16-60
 George Mundy; 74 Homecrest Ave., Slatersville, R. I. 9-15-60
 James Peckham; 4 Elliott Place, Newport, R. I. 4-11-61
 Jesse Ellisor; R# 1 - Box 249-F, Bennettsville, S. C. 8-27-60
 M. L. Love; 1129 Cherokee Rd., P. O. Box 1250, Florence, S. C. 2-24-61
 Walter Cox; R# 1, Peltier Rd., Knoxville 18, Tenn. 10-29-60
 Robert B. Dudley; 216 Broad St., Sweetwater, Tenn. 8-7-60

John Gilbert; McCord Ave., Athens, Tenn. 1-14-61
 Hoyle Kidd; 1300 Forrest Dr., Maryville, Tenn. 10-10-60
 Mr. & Mrs. Max A. Trew; P. O. Box 533, Englewood, Tenn. 1-21-61
 Mr. & Mrs. Mickey Watters; Watters Village, Athens, Tenn. 8-10-60
 John Absalom; 1902 N. Emerson, Tyler, Texas 8-13-60
 K. A. Carter; 1523 Parkway Dr., Lubbock, Texas 10-5-60
 Clyde J. Clark; 202 Willis Ave., Yoakum, Texas 7-15-60
 Ben L. Darby; P. O. Box 351, Van, Texas 3-26-61
 H. L. Davis; 2808 Fir Park, Ft. Worth, Texas 3-6-61
 Mr. & Mrs. D. E. Geddes; P. O. Box 415, Arcadia, Texas 9-10-60
 Bobby Halbert; 4001 Wilbarger, Ft. Worth, Texas 5-3-60
 Lillian Harris; 1529 Melbourne Dr., Corpus Christi, Texas 12-12-60
 Bobby Kautz; 609 Westview Terr., Arlington, Tarrant, Texas 1-18-61
 H. H. Latimer; 4502 Shackelford St., Ft. Worth 5, Texas 9-7-60
 Roy Martin, Jr.; 2301 - 15th., Vernon, Texas 12-13-60
 Robert D. Mook; R# 2 - Box 181, Beaumont, Texas 1-7-61
 Kirk R. Moore; 1909 Buchanan St., Wichita Falls, Texas 1-11-61
 Donna Parker; 1405 Lincoln, Amarillo, Texas 10-3-60
 Mrs. W. D. Parsons; 4000 Beverly Dr., Waco, Texas 6-12-61
 Billy Priddy; 4920 Barnett, Ft. Worth, Texas 3-15-61
 J. J. Scharnberg; P. O. Box 405, Lubbock, Texas 9-20-60
 L. E. Settle; 2710 - 55th. St., Lubbock, Texas 5-14-60
 Rebecca Tennyson; 1313 Woodbine St., Waco, Texas 10-13-60
 Donald N. Test, Jr.; 714 Broadway, San Antonio 5, Texas 5-26-60
 Mrs. D. Walker; 5508 Berget; Amarillo, Texas 10-29-60
 Byron F. Wilson; 2033 State St., Abilene, Texas 3-8-61
 Abbie Wheeler; Box 495, West Rutland, Vermont 10-17-60
 T. W. Jett; 2606 Colonial Ave. SW, Roanoke, Virginia 7-14-60
 Jimmie Sinclair; 904 Rod Lane, Salem, Virginia 6-11-61
 Eldon L. Zicker; R# 8 - Box 293, Yakima, Washington 8-11-60
 Andrew C. Camp; R# 1, Lavalette, W. Va. 8-15-60
 George Camp; 3853 Green Valley Rd., Huntington 5, West Birginia 3-31-61
 E. M. Childress; 2729 Daniels Ave., So. Charleston, W. Va. 8-4-60
 George W. Resseger, Jr.; 359 Whitten Lane, New Martinsville, W. Va. 5-14-60
 Mr. & Mrs. Walter Cook; 4910 S. 43rd. St., Milwaukee 15, Wis. 9-2-60
 Judy Henninger; R# 3, N73-W13579 Appleton Ave., Menomonee Falls, Wis. 4-2-61
 James Milbrath; R# 1, Sullivan, Wis. 8-21-60
 Glenn Wagner; 9128 So. 13th. St., So. Milwaukee, Wis. 9-27-60
 H. S. Arthur; 5 School Hill, Irchester, nr. Wellingborough, Northants, England 5-7-60
 F. B. Grosvenor; 22 Lawrence Rd., Ealing, London, England, W 5 5-560
 C. W. B. Holmes; 5 Council Houses, Low St., Carlton, nr. Goole, Yorks., England 4-30-61
 W. Hunter; 6 Wellbrae, Stonehouse, Lanarks, Scotland 10-6-60
 James Read; Dutton, Longridge, nr. Preston, England 1-1-61
 A. W. Smith; 67 High St., Irchester, nr. Welliborough, Northants, England 7-19-60
 R. Stone; 6 Venner Rd., Sydenham, London, SE 26, England 1-1-61
 D. F. Thorpe; 144 Bottesford Lane, Bottesford, nr. Scunthorpe, Lincs., England 9-5-60
 Rev. E. F. Gordon Wallace; Ingleside, Old Fishbourne, Chichester, Sussex, Eng. 6-23-60
 J. W. Wilson; 528 Gorton Rd., N. Reddish, Stockport, Cheshire, England 2-3-61

YOU CAN'T BEAT THE DUTCH

1960-61 COMMITTEES

STANDARD COMMITTEE

CHAIRMAN: E. C. Bickley, Sandusky, Ohio
 R. J. Grables, Milford, Mich.
 G. C. Leisenring, Fostoria, Ohio
 F. Cremer, Bakersfield, Calif.
 C. Gaddis, Winchester, Indiana

WAYS & MEANS COMMITTEE

CHAIRMAN: Clinton Dennis, Duncan, Oklahoma
 W. C. Stedman, Newfane, N. Y.
 Roger Eich, Templeton, Iowa
 J. C. Lowit, Troutdale, Oregon

ELECTION COMMITTEE

CHAIRMAN: Al Meier, Jr., So. Euclid, Ohio

EDUCATIONAL COMMITTEE
CHAIRMAN: T. Shufflebotham, Valparaiso, Ind.
Jimmy Sinclair, Salem, Virginia
Don Reid, Lockport, Illinois
Don Guthrie, Lamoni, Iowa
AUDITOR: Karl F. Schmidt; Mt. Pleasant, Mich.

E. P. Shilliday, Cleveland, Ohio
Jack Boughton, Chesterland, Ohio
PUBLICITY DIRECTOR
J. R. Hall, Hornell, New York

YOU CAN'T BEAT THE DUTCH

SWEEPSTAKE SHOWS

June 18-19; No. Colo. RBA at Colo. State U. Field House, Ft. Collins. Sec'y, Violet M. Wares; R# 2 - Box 260, Ft. Collins, Colo.
June 18-19; Valley View RBA at Allegan Cty. Frgrds.; Sec'y, Mrs. Doris Wilson; 904 Wilson, South Haven, Michigan
June 30-July 4; So. Calif. Exp. and San Diego Cty. Fair; Sec'y, Mrs. Frances Barnhart; P. O. Box 578, Del Mar, California
July 12-17; Orange Cty. Fair at Costa Mesa, Calif.; Sec'y, Enid Densel; 9647 Sierra Ave., Fontana, California.
June 26; Erie Rabbit Clug; at Bothes Grove, Erie; Sec'y, Arthur Heberlein; 3051 W. 32 St., Erie, Pennsylvania.
June 26; Ohio State RBA at Berea; Sec'y, Harold H. Shingler; 4615 Ranchwood Rd., Akron 15, Ohio.
July 17; Tri-county clubs of Huron, Lorain and Richland at Norwalk Frgrds; Sec'y, Mrs. Bea Beier; R# 2, Norwalk, Ohio
Sept. 5-9; VanWert Cty. Fair with Van Wert Cty. RBA; Sec'y, Edwin Etzler; R# 1, Van Wert, Ohio.
June 4-5; Rab. Pro. of Santa Clara Val. at Pleasanton; Sec'y, John Phillips; 203000 Crescent Drive, Sunnyvale, Calif.

YOU CAN'T BEAT THE DUTCH

SOUTH FLORIDA RABBIT BREEDERS ASS'N. - FLORIDA STATE FAIR

Tampa, Florida (1-101) February 2-13, 1960 Judge: Tommy Andrew
TOTAL DUTCH (36) BLACK DUTCH (11) SR. BUCK (2)1st., Best Black, BEST DUTCH, Peggy Carter. 2nd. C. A. Garner. SR. DOE (4)1st. Carter. 2nd., 4th. Rosemary Malott. 3rd. Sue Pritchard. JR. BUCK (1)1st. Malott. JR. DOE (4)1st., 3rd., 4th. Malott. 2nd. Carter.
BLUE DUTCH (4) SR. BUCK (1)1st. Janes Rbtry. SR. DOE (3)1st., Best Blue, Malott. 2nd. Carter. 3rd. Janes.
CHOCOLATE DUTCH (15) SR. BUCK (3)1st. Jimmy Wilson. 2nd. Janes. 3rd. James D. Collins. SR. DOE (5)1st., 2nd., 3rd. Janes. 4th. Collins. 5th. Disq. JR. BUCK (2)1st. Collins. 2nd. Disq. JR. DOE (5)1st., Best Chocolate, BEST OPPOSITE DUTCH, 3rd. Collins. 2nd. D & S Rbtry. 4th. Pritchard. 5th. Disq.
TORTOISE DUTCH (6) SR. DOE (5)1st., Best Tortoise, Pritchard. 2nd. Garner. 3rd. Carter. 4th. Janes. JR. DOE (1)1st. Carter.
SWEEPSTAKE POINTS: Janes Rbtry. 102. Rosemary Malott 92. Peggy Carter 85. James D. Collins 76.

YOU CAN'T BEAT THE DUTCH

PIMA COUNTY FAIR

Tucson, Arizona (2-22) March 9-13, 1960 Judge: Arthur Nelson
TOTAL DUTCH (116) BLACK DUTCH (34) SENIOR BUCK (9)1st., Best Black, BEST DUTCH, 2nd., 4th. Parks' Petland. 3rd., 5th. Romley's Rbtry. SR. DOE (6)1st. Parks. 2nd. Jess Williams. 3rd. Romley. 4th. Clipfort Rbtry. 5th. Disq. JR. BUCK (10)1st. Parks. 2nd., 4th. Romley. 3rd. William. 5th. Clipfort. JR. DOE (9)1st. Apache Rbtry. 2nd., 3rd. Williams. 4th. Clipfort. 5th. Romley.
BLUE DUTCH (27) SR. BUCK (10)1st., Best Chocolate, 2nd. Romley. 3rd., 4th. Parks. 5th. Williams. SR. DOE (4)1st. Parks. 2nd., 4th. Clipfort. 3rd. Williams. JR. BUCK (7)1st., 3rd. Romley. 2nd., 4th. Williams. 5th. Clipfort. JR. DOE (6)1st., 2nd. Williams. 3rd. Clipfort. 4th., 5th. Romley.
CHOCOLATE DUTCH (20) SR. BUCK (4)1st. Graemes Rbtry. 2nd., 4th. Parks. 3rd. Romley

5th. Williams. SR. DOE (4)1st., Best Chocolate, BEST OPPOSITE DUTCH, Romley. 2nd. Williams. 3rd., 4th. Disq. JR. BUCK (4)1st. Romley. 2nd. Clipfort. 3rd., 4th. Williams. JR. DOE (5)1st. Romley. 2nd. Clipfort. 3rd. Grames. 4th., 5th. Williams. TORTOISE DUTCH (12) SR. BUCK (4)1st., 2nd. Parks. 3rd. Elim. 4th. Disq. SR. DOE (4) 1st., Best Tortoise, 3rd. Clipfort. 2nd., 4th. Williams. JR. BUCK (2)1st., 2nd. Williams. JR. DOE (2)1st. Williams. 2nd. Disq. STEEL DUTCH (10) SR. BUCK (3)1st., Best Steel, 3rd. Clipfort. 2nd. Parks. SR. DOE (4) 1st., 3rd. Clipfort. 2nd., 4th. Parks. JR. DOE (3)1st., 2nd., 3rd. Clipfort. GRAY DUTCH (13) SR. BUCK (3)1st., Best Gray, 2nd., 3rd. Clipfort. SR. DOE (4)1st., 2nd. Clipfort. 3rd. Parks. 4th. Disq. JR. BUCK (3)1st., 2nd., 3rd. Clipfort. JR. DOE (3)1st., 2nd., 3rd. Clipfort. SWEEPSTAKE POINTS: Clipfort Rbtry. 420. Parks' Petland 408. Romley's Rbtry. 403. Jess Williams 342.

YOU CAN'T BEAT THE DUTCH

RICHMOND RABBIT BREEDERS ASS'N.

Elmont, Virginia (2-35) March 19, 1960 Judge: J. T. McLain - H. Curtis
 TOTAL DUTCH (35) BLACK DUTCH (9) SR. BUCK (3)1st. C. J. Simpson. 2nd., 3rd. Jimmy Sinclair. SR. DOE (4)1st., Best Black, Simpson. 2nd., 4th. Sinclair. 3rd. Jimmy Porter. JR. DOE (2)1st. Simpson. 2nd. Circle T Rbtry.
 BLUE DUTCH (8) SR. BUCK (3)1st., 2nd. Sinclair. 3rd. Simpson. SR. DOE (2)1st., Best Blue, BEST DUTCH, Sinclair. 2nd. John Tyree. JR. BUCK (2)1st. Simpson. 2nd. Sinclair. JR. DOE (1)1st. Sinclair.
 CHOCOLATE DUTCH (8) SR. BUCK (3)1st. Sinclair. 2nd. Simpson. 3rd. Billy Pope. SR. DOE (2)1st. Sinclair. 2nd. Disq. JR. BUCK (2)1st., Best Chocolate, BEST OPPOSITE DUTCH, Sinclair. 2nd. Simpson. JR. DOE (1)1st. Sinclair.
 TORTOISE DUTCH (5) SR. BUCK (2)1st., 2nd. Sinclair. SR. DOE (1)1st., Best Tortoise, Sinclair. JR. BUCK (1)1st. Sinclair. JR. DOE (1)1st. Sinclair.
 STEEL DUTCH (4) SR. BUCK (2)1st., 2nd. Sinclair. SR. DOE (2)1st., Best Steel, 2nd., Sinclair.
 GRAY DUTCH (1) SR. BUCK (1)1st., Best Gray, Sinclair.
 SWEEPSTAKE POINTS: Jimmy Sinclair 233. C. J. Simpson 95.

YOU CAN'T BEAT THE DUTCH

TRINITY VALLEY RABBIT CLUB

Liberty, Texas (2-7) March 20, 1960 Judge: R. B. Hopkins
 TOTAL DUTCH (14) BLACK DUTCH (10) SR. BUCK (2)1st., Best Black, BEST DUTCH, 2nd. D. E. Geddes. SR. DOE (3)1st., 2nd., 3rd. Geddes. JR. BUCK (4)1st., 2nd., 3rd., 4th. Geddes. JR. DOE (1)1st. Geddes.
 BLUE DUTCH (1) JR. BUCK (1)1st., Best Blue, Geddes.
 CHOCOLATE DUTCH (3) SR. BUCK (2)1st., 2nd. Geddes. SR. DOE (1)1st., Best Chocolate, BEST OPPOSITE DUTCH, Geddes.
 SWEEPSTAKE POINTS: D. E. Geddes 157.

YOU CAN'T BEAT THE DUTCH

WILL COUNTY RABBIT BREEDERS ASS'N.

Elwood, Illinois (2-29) March 27, 1960 Judge: H. R. Saegesser
 TOTAL DUTCH (12) BLACK DUTCH (6) SR. BUCK (3)1st., Best Black, BEST DUTCH, Al Seeman. 2nd. Don Reid. 3rd. Bloomquist Rbtry. SR. DOE (1)1st. Seeman. JR. DOE (2)1st., 2nd. Seeman.
 BLUE DUTCH (4) SR. BUCK (3)1st., 3rd. Seeman. 2nd. Reid. JR. DOE (1)1st., Best Blue, BEST OPPOSITE DUTCH, Seeman.
 GRAY DUTCH (2) SR. BUCK (1)1st., Best Gray, Seeman. JR. DOE (1)1st. James Morris.
 SWEEPSTAKE POINTS: Al Seeman 83. Don Reid 24. Bloomquist Rbtry. 9. James Morris 6.

YOU CAN'T BEAT THE DUTCH

VAN WERT COUNTY RABBIT BREEDERS ASS'N.

Van Wert, Ohio (2-52) April 1-3, 1960 Judge: R. J. Grables
 TOTAL DUTCH (40) BLACK DUTCH (14) SR. BUCK (7)1st., BEST OPPOSITE DUTCH, 2nd., 3rd.

Clyde L. Smith. 4th. Russell Betz. 5th. Ralph Long. SR. DOE (5)1st., Best Black, BEST DUTCH, Smith. 2nd., 3rd. Fuller Rbtry. 4th. Harry Chester. 5th. LaVerna M. Hoadley. JR. DOE (2)1st. Betz. 2nd. Hoadley.

BLUE DUTCH (6) SR. BUCK (1)Elim. SR. DOE (1)1st. Virgil Morton. JR. BUCK (1)1st., Best Blue, Russell. JR. DOE (2)1st. Russell. 2nd. Smith.

CHOCOLATE DUTCH (12) SR. BUCK (4)1st., Best Chocolate, 4th. Smith. 2nd., 3rd. James Kells. SR. DOE (3)1st. Smith. 2nd., 3rd. Kells. JR. BUCK (2)1st. Kells. 2nd. Smith JR. DOE (3)1st., 2nd. Smith. 3rd. Kells.

TORTOISE DUTCH (5) SR. BUCK (2)1st., Best Tortoise, Morton. 2nd. Dale Boroff. SR. DOE (3)1st., 3rd. Chester. 2nd. Kells.

STEEL DUTCH (3) SR. BUCK (2)1st., Best Steel, Morton. 2nd. Wilbert Boroff. SR. DOE (1) 1st. W. Boroff.

GRAY DUTCH (1) SR. BUCK (1)1st., Best Gray, Morton.

SWEEPSTAKE POINTS: Clyde Smith 217. James Kells 82. Virgil Morton 36. Fuller Rbtry. 30 Rex Russell 18.

YOU CAN'T BEAT THE DUTCH

NIAGARA FRONTIER RABBIT CLUB

Hamburg, New York (2-70) April 3, 1960 Judge: Harry Rice

TOTAL DUTCH (69) BLACK DUTCH (37) SR. BUCK (13)1st., Best Black, BEST DUTCH, Jack Boughton. 2nd. Bill Ehlers. 3rd. Eastview Rbtry. 4th. E. P. Shilliday. 4th. John Cuer. SR. DOE (13)1st. Ehlers. 2nd. Harold May. 3rd. Maple Knoll Rbtry. 4th. Allen Baker. 5th. Tony Naurocki. JR. BUCK (6)1st. Charles Williams. 2nd. Eastview. 3rd. Boughton. 4th. Naurocki. 5th. Shilliday. JR. DOE (6)1st., BEST OPPOSITE DUTCH, Williams. 2nd. Harold Thayer. 3rd. Shilliday. 4th. May. 5th. Hager's Rbtry.

BLUE DUTCH (14) SR. BUCK (8)1st., Best Blue, Williams. 2nd. Boughton. 3rd. Michael Mantsch. 4th. Ehlers. 5th. Maple Knoll. SR. DOE (2)1st. Baker. 2nd. Ehlers. JR. BUCK (3)1st. Williams. 2nd. Cuer. 3rd. Disq. JR. DOE (1)1st. Mantsch.

CHOCOLATE DUTCH (5)1st., Best Chocolate, Mantsch. 2nd., 3rd., 5th. Murray. 4th. Green Meadows Rbtry.

TORTOISE DUTCH (8) SR. BUCK (6)1st., Best Tortoise, 2nd. Bill Zimmerlay. 3rd. Ehlers. 4th. May. 5th. Murray. SR. DOE (2)1st. Zimmerlay. 2nd. Ehlers.

STEEL DUTCH (1) SR. BUCK (1)1st., Best Steel, May.

SWEEPSTAKE POINTS: Charles Williams 132. Jack Boughton 128. Michael Mantsch 76. Bill Zimmerlay 72. Eastview Rbtry. 63. Earl Murray 58. E. P. Shilliday 47. John Cuer 25. Harold Thayer 20.

YOU CAN'T BEAT THE DUTCH

CENTRAL ARIZONA RABBIT BREEDERS ASS'N.

Phoenix, Arizona (2-31) April 3, 1960 Judge: E. R. Parks - John Wells

TOTAL DUTCH (81) BLACK DUTCH (24) SR. BUCK (7)1st., Best Black, 5th. Parks' Petland. 2nd., 3rd., 4th. Romley's Rbtry. SR. DOE (5)1st. Romley. 2nd., 3rd., 4th. Parks. 5th. Jess Williams. JR. BUCK (8)1st., 3rd. Romley. 2nd., 5th. Parks. 4th. William JR. DOE (4)1st. Romley. 2nd., 4th. R. S. Satterwhite. 3rd. Williams.

BLUE DUTCH (20) SR. BUCK (7)1st. Mike Just. 2nd. Romley. 3rd., 5th. Parks. 4th. Williams. SR. DOE (3)1st. Romley. 2nd. Williams. 3rd. Parks. JR. BUCK (6)1st., Best Blue, 2nd., 3rd. Romley. 4th., 5th. Parks. JR. DOE (4)1st., 2nd. Williams. 3rd. Romley. 4th. Disq.

CHOCOLATE DUTCH (22) SR. BUCK (8)1st., Best Chocolate, BEST DUTCH, Just. 2nd., 5th. Romley. 3rd. Williams. 4th. Grames Rabbit Ranch. SR. DOE (7)1st., BEST OPPOSITE DUTCH, 5th. Romley. 2nd. Just. 3rd. Grames. 4th. Williams. JR. BUCK (4)1st., 3rd. Just. 2nd. Romley. 4th. Williams. JR. DOE (3)1st. Just. 2nd. Romley. 3rd. Williams

TORTOISE DUTCH (8) SR. BUCK (3)1st., Best Tortoise, 2nd., 3rd. Parks. SR. DOE (3) 1st., 3rd. Parks. 2nd. Williams. JR. BUCK (1)1st. Williams. JR. DOE (1)1st. Williams.

STEEL DUTCH (5) SR. BUCK (1)1st., Best Steel, Parks. SR. DOE (4)1st., 2nd., 3rd., 4th. Parks.

GRAY DUTCH (2) SR. BUCK (2)1st., Best Gray, 2nd. Parks.

SWEEPSTAKE POINTS: Romley Rbtry. 450. Parks' Petland 341, Jess Williams 178. Mike

YOU CAN'T BEAT THE DUTCH

SOUTH CENTRAL IOWA RABBIT FANCIERS ASS'N.

Winterset, Iowa (2-23) April 3, 1960 Judge: Ivan Miller
 TOTAL DUTCH (20) BLACK DUTCH (10) SR. BUCK (2)1st. Donald Wooden. 2nd. Elmo Smith. SR. DOE (3)1st. Bob Lang. 2nd. Wooden. 3rd. C. Jay Miller. JR. BUCK (3)1st., BEST OPPOSITE DUTCH, Don Guthrie. 2nd. Arnold Smith. 3rd. Lang. JR. DOE (2)1st., Best Black, Wooden. 2nd. Disq.
 BLUE DUTCH (2) SR. DOE (1)1st., Best Blue, Wooden. JR. DOE (1)1st. Guthrie.
 CHOCOLATE DUTCH (4) SR. BUCK (2)1st. Wooden. 2nd. Miller Bros. SR. DOE (2)1st., Best Chocolate, Wooden. 2nd. Miller Bros.
 TORTOISE DUTCH (1) JR. BUCK (1)1st., Best Tortoise, A. Smith.
 STEEL DUTCH (1) SR. DOE (1)1st., Best Steel, BEST DUTCH, Miller Bros.
 GRAY DUTCH (2) SR. BUCK (1)Elim. JR. BUCK (1)Elim.
 SWEEPSTAKE POINTS: Donald Wooden 66. Don Guthrie 24. Miller Bros. 22. C. Jay Miller 9. Elmo Smith 8.

YOU CAN'T BEAT THE DUTCH

TEXAS STATE SHOW

(2-57) April 9-10, 1960 Judge: G. J. Leger
 TOTAL DUTCH (26) BLACK DUTCH (8) SR. BUCK (4)1st., Best Black, BEST OPPOSITE DUTCH, 2nd. D. E. Geddes. 3rd. Mrs. W. D. Parsons. 4th. Mission City Rbtry. SR. DOE (2) 1st., 2nd. Geddes. JR. BUCK (2)1st., 2nd. Geddes.
 BLUE DUTCH (10) SR. BUCK (2)1st. Kirk Moore. 2nd. Mission City. SR. DOE (2)1st., 2nd. Mission City. JR. DOE (4)1st., Best Blue, BEST DUTCH, 2nd., 4th. Parsons. JR. BUCK (2)1st., 2nd. Parsons.
 CHOCOLATE DUTCH (6) SR. BUCK (3)1st., Best Chocolate, Moore. 2nd. Geddes. 3rd. Mission City. SR. DOE (3)1st., 2nd. Mission City. 3rd. Geddes.
 TORTOISE DUTCH (2) SR. BUCK (1)Disq. JR. DOE (1)1st., Best Tortoise, Moore.
 SWEEPSTAKE POINTS: D. E. Geddes 101. Mrs. W. D. Parsons 80. Kirk R. Moore 48.

YOU CAN'T BEAT THE DUTCH

WILLIAMS COUNTY RABBIT BREEDERS ASS'N.

Bryan, Ohio (1-95) April 9-10, 1960 Judge: Carlton Gaddis
 TOTAL DUTCH (47) BLACK DUTCH (24) SR. BUCK (10)1st. A & M Emery. 2nd., 3rd. Clyde L. Smith. 4th. Cooper's Hillcrest Rbtry. 5th. Dick Pribbernow. SR. DOE (6)1st., Best Black, BEST OPPOSITE DUTCH, A & M Emery. 2nd. A. C. McKeeman. 3rd. Smith. 4th. Fuller's Rbtry. 5th. Cooper. JR. BUCK (4)1st. Mel Emery & Sons. 2nd. McKeeman. 3rd. Barnes Rbtry. 4th. A & M Emery. JR. DOE (4)1st. Barnes. 2nd. Russell Betz. 3rd. A & M Emery. 4th. Disq.
 BLUE DUTCH (10) SR. BUCK (3)1st., Best Blue, 3rd. Cooper. 2nd. Mel Emery. SR. DOE (3) 1st., 3rd. Mel Emery. 2nd. Cooper. JR. BUCK (1)1st. Cooper. JR. DOE (3)1st. Smith 2nd. Mel Emery. 3rd. McKeeman.
 CHOCOLATE DUTCH (11) SR. BUCK (4)1st., Best Chocolate, BEST DUTCH, Betz. 2nd., 3rd. A & M Emery. 4th. Pribbernow. SR. DOE (2)1st. Smith. 2nd. A & M Emery. JR. BUCK (1) 1st. Smith. JR. DOE (4)1st., 3rd. A & M Emery. 2nd., 4th. Smith.
 TORTOISE DUTCH (1) SR. BUCK (1)1st., Best Tortoise, Cooper.
 GRAY DUTCH (1) SR. DOE (1)1st. Barnes., Best Gray.
 SWEEPSTAKE POINTS: A & M Emery 188. Clyde L. Smith 148. Mel Emery & Sons 75. A. C. McKeeman 49. Barnes Rbtry. 42. Dick Pribbernow 18. Fuller's Rbtry. 12.

YOU CAN'T BEAT THE DUTCH

OKLAHOMA RABBIT BREEDERS ASS'N.

Oklahoma City, Oklahoma (2-72) April 10, 1960 Judge: Harold McGovney
 TOTAL DUTCH (36) BLACK DUTCH (3) SR. BUCK (2)1st., Best Black, 2nd. Dennis Rabbit Ranch. JR. BUCK (1)1st. Hudson Rbtry.
 BLUE DUTCH (11) SR. BUCK (7)1st., Best Blue, Bueford Cauthorn. 2nd., 3rd. J. C. Early. 4th. Dennis. 5th. Hudson. SR. DOE (2)1st., BEST OPPOSITE DUTCH, Early. 2nd. Disq.

JR. DOE (2)1st. Cauthorn. 2nd. Disq.
 CHOCOLATE DUTCH (10) SR. BUCK (3)1st., Best Chocolate, Dennis. 2nd. Cauthorn. 3rd.
 Early. SR. DOE (1)1st. Dennis. JR. BUCK (3)1st. Robert Turner. 2nd. Dennis. 3rd.
 Disq. JR. DOE (3)1st. Cauthorn. 2nd. Early. 3rd. Dennis.
 TORTOISE DUTCH (8) SR. BUCK (4)1st., Best Tortoise, 2nd. Dennis. 3rd., 4th. Cauthorn.
 SR. DOE (1)1st. Dennis. JR. BUCK (1)1st. Early. JR. DOE (2)1st. Early. 2nd. Disq.
 STEEL DUTCH (1) SR. BUCK (1)1st., Best Steel, Cauthorn.
 GRAY DUTCH (3) SR. BUCK (1)1st. Dennis. JR. BUCK (1)1st., Best Gray, Cauthorn. JR. DOE
 (1)1st. Cauthorn. BEST DUTCH, Black Senior Buck, Dennis.
 SWEEPSTAKE POINTS: Dennis Rabbit Ranch 131. Beuford Cauthorn 122. J. C. Early 100.
 Hudson Rbtry. 13.

YOU CAN'T BEAT THE DUTCH

SWEEPSTAKE STANDINGS - OLD SERIES

A & P Herman-----	15,838	Dennis Rabbit Ranch-----	2,553
Bickley's Bunnyland--	7,100	Clyde L. Smith-----	2,299
Clipfort Rbtry-----	6,187	Cook's Rbtry-----	2,284
Parks' Petland-----	5,591	R. M. Hickok-----	2,061
Eich's Rbtry-----	5,270	Delmas Cockey-----	1,572
Hulda's Rbtry-----	4,985	Kenneth Dorn-----	1,518
A & M Emery-----	3,148	Watter's Rbtry-----	1,407
Romley's Rbtry-----	2,948	Earles Rbtry-----	1,314
Jimmy Sinclair-----	2,860	Bill Summers-----	1,386
LaSalle Rbtry-----	2,617	Jess Williams-----	1,286

YOU CAN'T BEAT THE DUTCH

PECOS VALLEY RABBIT BREEDERS ASS'N.

Roswell, New Mexico (2-48) April 17, 1960 Judge: Charles O'Dell
 TOTAL DUTCH (58) BLACK DUTCH (19) SR. BUCK (7)1st. C. B. Groff. 2nd., 3rd., 4th. Rom-
 ley's Rbtry. 5th. Parks' Petland. SR. DOE (3)1st. Robert Williams. 2nd. Romley.
 3rd. Groff. JR. BUCK (6)1st., 2nd. Romley. 3rd. Parks. 4th. K. A. Carter. 5th.
 J. J. Scharnberg. JR. DOE (3)1st., Best Black, Romley. 2nd. Parks, 3rd. Parks.
 BLUE DUTCH (17) SR. BUCK (8)1st., 2nd. Romley. 3rd. Parks. 4th. Scharnber. 5th. Carter.
 SR. DOE (1)1st. Romley. JR. BUCK (4)1st., Best Blue, 2nd., 3rd. Romley. 4th. Parks
 JR. DOE (4)1st., 2nd., 4th. Parks. 3rd. Romley.
 CHOCOLATE DUTCH (11) SR. BUCK (5)1st., 2nd., 4th. Parks. 3rd., 5th. Romley. SR. DOE(3)
 1st. Williams. 2nd., 3rd. Romley. JR. BUCK (2)1st., Best Chocolate, 2nd. Romley.
 JR. DOE (1)1st. Romley.
 TORTOISE DUTCH (8) SR. BUCK (4)1st., 2nd., 4th. Parks. 3rd. Carter. SR. DOE (1)1st.
 Parks. JR. DOE (3)1st., 2nd., 3rd. Parks. (The Se'y failed to say which rabbit
 placed Best Tortoise.)
 STEEL DUTCH (3) SR. BUCK (1)1st. Parks. SR. DOE (2)1st. Parks. 2nd. Scharnberg. (no
 information as to which rabbit placed Best Steel.)
 SWEEPSTAKE POINTS: Romley's Rabbitry 371. Parks' Petland 295. C. B. Groff 51. K. A.
 Carter 32. J. J. Scharnberg 30.

YOU CAN'T BEAT THE DUTCH

SALT CITY RABBIT CLUB

Hutchinson, Kansas (2-50) April 23-24, 1960 Judge: L. W. VanHorne
 TOTAL DUTCH (9) BLACK DUTCH (2) SR. BUCK (1)Elim. SR. DOE (1)1st., Best Black, Walter
 Schroeder, Jr.
 BLUE DUTCH (1) JR. DOE (1)1st., Best Blue, Robert L. Ernst.
 CHOCOLATE DUTCH (3) SR. BUCK (1)1st., Best Chocolate, W-C Rbtry. SR. DOE (1)1st.,
 Best Chocolate, BEST OPPOSITE DUTCH, L & L Johnson's. JR. BUCK (1)1st. Ernst.
 TORTOISE DUTCH (3) SR. BUCK (2)1st., Best Tortoise, 2nd. Ernst. SR. DOE (1)1st. Ernst.
 SWEEPSTAKE POINTS: Robert L. Ernst 38. Walter Schroeder, Jr. 6. W & C Rbtry 6.

YOU CAN'T BEAT THE DUTCH

ALBUQUERQUE RABBIT BREEDERS ASS'N.

Albuquerque, New Mexico (2-63) April 23-24, 1960 Judge: George Anglin
 TOTAL DUTCH (57) BLACK DUTCH (21) SR. BUCK (6)1st. Parks' Petland. 2nd., 4th., 5th.
 Romley's Rbtry. 3rd. Marcia Estabrook. SR. DOE (7)1st. Romley. 2nd. Bill Summers.
 3rd., 4th. Estabrook. 5th. C. B. Groff, JR. BUCK (5)1st., Best Black, Romley. 2nd.
 Parks. 3rd., 4th., 5th. Disq. JR. DOE (3)1st. Romley. 2nd. Parks. 3rd. Disq.
 BLUE DUTCH (18) SR. BUCK (5)1st., Best Blue, BEST DUTCH, 5th. Parks. 2nd., 3rd., 4th.
 Romley. SR. DOE (5)1st., BEST OPPOSITE DUTCH, Summers. 2nd., 3rd. Estabrook. 4th.
 Romley. 5th. Estabrook. JR. BUCK (4)1st., 2nd., 3rd. Romley. 4th. Parks. JR. DOE
 (4)1st., 2nd., 4th. Parks. 3rd. Romley.
 CHOCOLATE DUTCH (9) SR. BUCK (4)1st., Best Chocolate, 4th. Romley. 2nd., 3rd. Parks.
 SR. DOE (2)1st., 2nd. Romley. JR. BUCK (2)1st., 2nd. Romley.
 TORTOISE DUTCH (7) SR. BUCK (3)1st., 2nd., 3rd. Parks. SR. DOE (1)1st. Parks. JR. DOE
 (3)1st., Best Tortoise, 2nd., 3rd. Parks.
 STEEL DUTCH (2) SR. BUCK (1)1st. Parks. SR. DOE (1)1st., Best Steel, Parks.
 SWEEPSTAKE POINTS: Romley's Rbtry. 323. Parks' Petland 257. Marcia Estabrook 93. Bill
 Summers 58. C. B. Groff 7.

YOU CAN'T BEAT THE DUTCH

CUMBERLAND COUNTY RABBIT BREEDERS ASS'N. OF MAINE

Windham, Maine (2-78) April 23-24, 1960 Judge: Marvin F. Carley
 TOTAL DUTCH (33) BLACK DUTCH (26) SR. BUCK (5)1st. Blynn Packard. 2nd., 5th. William
 Clawes. 3rd., 4th. Lawrence Daniels. SR. DOE (6)1st. Melody Cushing. 2nd., 3rd.,
 5th. Daniels. 4th. Packard. JR. BUCK (9)1st., BEST OPPOSITE DUTCH, Alfred Handy.
 2nd., 3rd., 4th. Daniels. 5th. Packard. JR. DOE (6)1st., BEST DUTCH, 2nd. Daniels
 3rd. Handy. 4th. Cushing. 5th. Paul Murphy.
 BLUE DUTCH (7) SR. BUCK (2)1st. Handy. 2nd. Cushing. SR. DOE (2)1st. Cushing. 2nd.
 Daniels. JR. BUCK (1)1st. Cushing. JR. DOE (2)1st., Best Blue, Handy. 2nd.
 Cushing.
 SWEEPSTAKE POINTS: Alfred Handy 108. Melody Cushing 70. Lawrence Daniels 222.

YOU CAN'T BEAT THE DUTCH

LIMA RABBIT & CAVY BREEDERS ASS'N., INC.

Lima, Ohio (2-102) April 23-24, 1960 Judge: Carldon Gaddis
 TOTAL DUTCH (23) BLACK DUTCH (8) SR. BUCK (1)1st. Dick Pribbernow. SR. DOE (2)1st.,
 BEST OPPOSITE DUTCH, A. C. McKeeman. 2nd. James Kells. JR. BUCK (3)1st., Best
 Black, BEST DUTCH, McKeeman. 2nd., 3rd. Mike's Rbtry. JR. DOE (2)1st. McKeeman.
 2nd. Mike's.
 BLUE DUTCH (7) SR. BUCK (2)1st., 2nd. Mike's. SR. DOE (2)1st. Kells. 2nd. McKeeman.
 JR. BUCK (3)1st. P. O. Gookenbarger. 2nd., 3rd. Mike's.
 CHOCOLATE DUTCH (6) SR. BUCK (2)1st., Best Chocolate, Kells. 2nd. Pribbernow. SR. DOE
 (1)1st. Kells. JR. BUCK (2)1st. Kells. 2nd. Mike's. JR. DOE (1)1st. Kells.
 TORTOISE DUTCH (1) SR. DOE (1)1st., Best Tortoise, Kells.
 GRAY DUTCH (1) SR. BUCK (1)1st., Best Gray, Mike's.
 SWEEPSTAKE POINTS: Mike's Rbtry. 76. A. C. McKeeman 58. James Kells 62. Dick Pribber-
 now 14.

YOU CAN'T BEAT THE DUTCH

EATON COUNTY RABBIT BREEDERS ASS'N.

Eaton Rapids, Michigan (2-46) April 23-24, 1960 Judge: Ray Grables
 TOTAL DUTCH (37) BLACK DUTCH (15) SR. BUCK (2)1st. Leland Roach, Jr. 2nd. Lester Gene
 Norton. SR. DOE (5)1st., Best Black, 2nd. LaSalle Rbtry. 3rd. LaVern LeClair. 4th
 5th. Norton. JR. BUCK (4)1st. LaSalle. 2nd., 3rd. John Nowak. 4th. LeClair. JR.
 DOE (4)1st. LaSalle. 2nd. Nowak. 3rd. Gordon Halsey. 4th. Disq.
 BLUE DUTCH (10) SR. BUCK (3)1st., BEST OPPOSITE DUTCH, LaSalle. 2nd. Cooper's Hillcres
 Rbtry. 3rd. Disq. SR. DOE (4)1st. Cooper. 2nd., 4th. Joe Weinhardt. 3rd. Norton.
 JR. BUCK (1)1st. Weinhardt. JR. DOE (2)1st., Best Blue, BEST DUTCH, LaSalle.
 2nd. Disq.
 CHOCOLATE DUTCH (5) SR. BUCK (1)1st. Norton. SR. DOE (3)1st., 2nd. Weinhardt. 3rd.

Norton. JR. DOE (1)1st., Best Chocolate, Cooper.
 TORTOISE DUTCH (5) SR. BUCK (2)1st. Cooper. 2nd. LaSalle. SR. DOE (3)1st., Best Tortoise, LaSalle. 2nd. Weinhardt. 3rd. Norton.
 GRAY DUTCH (2) SR. DOE (1)1st. Norton. JR. DOE (1)1st., Best Gray, Norton.
 SWEEPSTAKE POINTS: LaSalle Rbtry. 154. Joe Weinhardt 72. Lester Gene Norton 71. John Nowak 44.

YOU CAN'T BEAT THE DUTCH

KANKAKEE VALLEY RABBIT BREEDERS ASS'N.

Chebanse, Illinois (2-15) April 24, 1960 Judge: H. Saegesser
 TOTAL DUTCH (5) BLACK DUTCH (3) SR. BUCK (1)1st., Best Black, BEST OPPOSITE DUTCH, Chet Yokum. SR. DOE (2)1st. E. F. Hoffman. 2nd. Jay Hendershott.
 BLUE DUTCH (2) SR. BUCK (1)1st. Elaine Webb. JR. DOE (1)1st., Best Blue, BEST DUTCH, Yocom.
 SWEEPSTAKE POINTS: No members showing.

YOU CAN'T BEAT THE DUTCH

TRI CITY RABBIT BREEDERS ASS'N.

Cascade, Iowa (2-61) April 24, 1960 Judge: Don Guthrie
 TOTAL DUTCH (18) BLACK DUTCH (4) JR. BUCK (3)1st. Melvin Kleppe. 2nd., 3rd. Dale Bruce. JR. DOE (1)1st., Best Black, Kleppe.
 BLUE DUTCH (4) SR. BUCK (2)1st., 2nd. Disq. SR. DOE (2)1st., Best Blue, Bruce. 2nd. Dis
 CHOCOLATE DUTCH (6) SR. BUCK (1)1st., Miller Bros. SR. DOE (2)1st. Bruce. 2nd. Miller. JR. BUCK (1)1st., BEST OPPOSITE DUTCH, Miller. JR. DOE (2)1st., Best Chocolate, 2nd. Miller.
 TORTOISE DUTCH (3) SR. DOE (1)1st. C. Jay Miller. JR. BUCK (1)1st. Bruce. JR. DOE (1)1st., Best Tortoise, Bruce.
 STEEL DUTCH (1) SR. DOE (1)1st., Best Steel, BEST DUTCH, Miller Bros.
 SWEEPSTAKE POINTS: Miller Bros. 46. C. Jay Miller 6.

YOU CAN'T BEAT THE DUTCH

FREEMPORT RABBIT & FUR BREEDERS ASS'N.

Freeport, Illinois (2-65) April 24, 1960 Judge: Ivan Miller
 TOTAL DUTCH (19) BLACK DUTCH (6) SR. BUCK (3)1st., Best Black, BEST DUTCH, 3rd. Cook's Rbtry. 2nd. Bunny Hop Rbtry. SR. DOE (2)1st., BEST OPPOSITE DUTCH, Bunny Hop. 2nd Cook. JR. DOE (1)1st. Cook.
 BLUE DUTCH (4) SR. BUCK (1)1st. Bunny Hop. SR. DOE (1)1st. Cook. JR. BUCK (1)Cook. JR. DOE (1)1st., Best Blue, Cook.
 CHOCOLATE DUTCH (3) SR. DOE (1)1st. Cook. JR. BUCK (1)1st. Cook. JE. DOE (1)1st., Best Chocolate, Cook.
 TORTOISE DUTCH (3) SR. DOE (1)1st., Best Tortoise, Cook. JR. BUCK (1)1st. Cook. JR. DOE (1)1st. Cook.
 STEEL DUTCH (1) SR. BUCK (1)1st., Best Steel, Cook.
 GRAY DUTCH (2) SR. BUCK (1)1st., Best Gray, Cook. SR. DOE (1)1st. Cook.
 SWEEPSTAKE POINTS: Cook's Rbtry. 113. Bunny Hop Rbtry. 30.

YOU CAN'T BEAT THE DUTCH

TERRE HAUTE RABBIT & CAVY BREEDERS ASS'N.

Terre Haute, Indiana (2-83) April 24, 1960 Judge: Lester Wells
 TOTAL DUTCH (9) BLACK DUTCH (5) SR. BUCK (1)1st. Frank Sappingfield. SR. DOE (1)1st. Paul Willett. JR. BUCK (1)1st., Best Black, BEST DUTCH, Willett. JR. DOE (2)1st. Sappingfield. 2nd. Kenneth Kimball.
 BLUE DUTCH (2) SR. DOE (1)1st., Best Blue, BEST OPPOSITE DUTCH, Kimball.
 CHOCOLATE DUTCH (1)1st., Best Chocolate, Kimball.
 TORTOISE DUTCH (1) SR. DOE (1)1st., Best Tortoise, Danny Ray Spitler.
 SWEEPSTAKE POINTS: Kenneth Kimball 20.

YOU CAN'T BEAT THE DUTCH

FINGER-LAKES RABBIT BREEDERS ASS'N.

Waterloo, New York (2-91) April 24, 1960 Judge: Don Lovejoy
 TOTAL DUTCH (43) BLACK DUTCH (21) SR. BUCK (7)1st., Best Black, BEST DUTCH, Glen Ehlers
 2nd., 4th. John Cuer. 3rd. Hager's Rbtry. 5th. Sam Catalano. SR. DOE (8)1st., 3rd.
 Ehlers. 2nd. Maple Knoll Rbtry. 4th. Earl Murray. 5th. Cuer. JR. BUCK (3)1st. Dan
 McConnell. 2nd. William Stedman. 3rd. Cuer. JR. DOE (3)1st. Stedman. 2nd. Ehlers.
 3rd. Hager's.
 BLUE DUTCH (11) SR. BUCK (5)1st., Best Blue, Maple Knoll. 2nd., 3rd. Ehlers. 4th.
 Murray. 5th. Disq. SR. DOE (4)1st., BEST OPPOSITE DUTCH, 3rd. Ehlers. 2nd. A.
 Baker. 4th. K & D Rbtry. JR. BUCK (1)1st. Cuer. JR. DOE (1)1st. Linda Smith.
 CHOCOLATE DUTCH (8) SR. BUCK (4)1st., Best Chocolate, 2nd. Murray. 3rd. Avery's Rbtry.
 4th. Hager's. SR. DOE (4)1st., 2nd., 3rd. Murray. 4th. Green Meadow's Rbtry.
 TORTOISE DUTCH (3) SR. BUCK (1)1st., Best Tortoise, Hall's Backyard Rbtry. SR. DOE (1)
 1st. Hall. JR. DOE (1)1st. Hall.
 SWEEPSTAKE POINTS: Earl Murray 118. John Cuer 75. Wm. Stedman 30. Hall's Backyard Rbtry
 18. Avery's Rbtry 12.

YOU CAN'T BEAT THE DUTCH

SAN ANTONIO RABBIT BREEDERS ASS'N.

San Antonio, Texas (2-73) April 24, 1960 Judge: Ray Grant
 TOTAL DUTCH (7) BLACK DUTCH (1) SR. BUCK (1)1st. Oliver F. C. Keene.
 BLUE DUTCH (3) SR. BUCK (1)1st., Keene. SR. DOE (2)1st., Best Blue, BEST DUTCH, 2nd.
 Keene.
 CHOCOLATE DUTCH (3) SR. BUCK (1)1st., Best Chocolate, BEST DUTCH, Keene. SR. DOE (2)
 1st. 2nd. Keene.
 SWEEPSTAKE POINTS: No members showing.

YOU CAN'T BEAT THE DUTCH

AUTO CITY RABBIT BREEDERS ASS'N.

Belleville, Michigan (2-80) April 30-May 1, 1960 Judge: R. J. Grables
 TOTAL DUTCH (53) BLACK DUTCH (15) SR. BUCK (6)1st., 2nd. Clyde Smith. 3rd. Mrs. Le-
 land Roach. 4th. Cooper's Hillcrest Rbtry. 5th. Lester Gene Norton. SR. DOE (5)
 1st. Smith. 2nd., 3rd. LaSalle Rbtry. 4th. Leslie McInnes. 5th. Mike Kronk. JR.
 BUCK (3)1st., Best Black, BEST OPPOSITE DTUCH, LaSalle. 2nd. Hartley Thomas. 3rd.
 Glen Buck. JR. DOE (1)1st. LaSalle.
 BLUE DUTCH (17) SR. BUCK (5)1st., 4th. LaSalle. 2nd. Cooper. 3rd. Kronk. 5th. Thomas.
 SR. DOE (4)1st. Kron. 2nd., 4th. Joe Weinhardt. 3rd. Cooper. JR. BUCK (2)1st.
 Kronk. 2nd. Elim. JR. DOE (6)1st., Best Blue, BEST DUTCH, 5th. LaSalle. 2nd.
 Kronk. 3rd. Kronk. 4th. Smith.
 CHOCOLATE DUTCH (13) SR. BUCK (4)1st., Best Chocolate, 3rd. Smith. 2nd. McInnes. 4th.
 Russell Betz. SR. DOE (6)1st. McInnes. 2nd. Smith. 3rd. McInnes. 4th., 5th.
 Weinhardt. JR. BUCK (1)1st. Smith. JR. DOE (2)1st. Cooper. 2nd. Buck.
 TORTOISE DUTCH (3) SR. BUCK (1)1st., Best Tortoise, Cooper. SR. DOE (2)1st. Thomas.
 2nd. LaSalle.
 STEEL DUTCH (3) SR. BUCK (2)1st., Best Steel, 2nd. Thomas. SR. DOE (1)1st. Thomas.
 GRAY DUTCH (3) SR. BUCK (1)1st., Best Gray, Thomas. SR. DOE (2)1st., 2nd. Thomas.
 SWEEPSTAKE POINTS: Clyde L. Smith 168. LaSalle Rbtry. 149. Mike Kronk 98. Hartley
 Thomas 83. Leslie McInnes 80. Joe Weinhardt 42. Mrs. Leland Roach 18. Glen Buck
 17. Lester Gene Norton 6.

YOU CAN'T BEAT THE DUTCH

NORTH TEXAS RABBIT BREEDERS ASS'N.

Dallas, Texas (2-81) April 30-May 1, 1960 Judge: Benny F. Hill
 TOTAL DUTCH (27) BLACK DUTCH (15) SR. BU K (3)1st. Ben L. Darby. 2nd., 3rd. Disq.
 JR. BUCK (3)1st. Darby. 2nd. Kirk Moore. 3rd. Yolande Howard. JR. DOE (6)1st.,
 Best Black, Doris Jones. 2nd. H. H. Latimer. 3rd. Darby. 4th., 5th. Moore.
 BLUE DUTCH (3) SR. BUCK (1)1st., Best Blue, BEST DUTCH, Moore. SR. DOE (1)1st. Moore
 JR. DOE (1)1st. Mrs. W. D. Parsons.
 CHOCOLATE DUTCH (8) SR. BUCK (1)1st. Odis Youngblood. SR. DOE (1)1st. Rob't. Williams

JR. BUCK (3)1st., Best Chocolate, 2nd. Latimer. 3rd. Moore. JR. DOE (3)1st., BEST OPPOSITE DUTCH, 2nd., 3rd. Latimer.
 TORTOISE CUTCH (1) SR. DOE (1)1st., Best Tortoise, Moore.
 SWEEPSTAKE POINTS: H. H. Latimer 93. Kirk R. Moore 57. Ben L. Darby 54. Mrs. W. D. Parsons 6.

YOU CAN'T BEAT THE DUTCH

OHIO STATE CONVENTION SHOW - LORAIN COUNTY RABBIT & CAVY BREEDERS ASS'N., INC.
 Wellington, Ohio (2-19) April 30-May 1, 1960 Judge: Don Lovejoy
 TOTAL DUTCH (111) BLACK DUTCH (40) SR. BUCK (11) 1st., BEST OPPOSITE DUTCH, 4th. Hulda' Rbtry. 2nd., 3rd., 5th. Bickley's Bunnyland. SR. DOE (9)1st., 5th. Bickley. 2nd. Pair O' Jacks Rbtry. 3rd. Hulda. 4th. Pair O' Jacks. JR. BUCK (8)1st., 5th. Bickley. 2nd. Mel Emery & Sons. 3rd. Mike's Rbtry. 4th. Eastview Rbtry. JR. DOE (12) 1st., Best Black, BEST DUTCH, Bickley. 2nd. Walt Botamer. 3rd. Barnes Rbtry. 4th. Hulda. 5th. Pair O' Jacks.
 BLUE DUTCH (26) SR. BUCK (9)1st., Best Blue, 3rd., 4th. Bickley. 2nd., 5th. Hulda. SR. DOE (7)1st. Bickley. 2nd. Mel Emery. 3rd., 5th. H & B Crabbs. 4th. Hulda. JR. BUCK (6)1st., 5th. Hulda. 2nd., 4th. M. Emery. 3rd. Mike's. JR. DOE (4)1st., 3rd. Bickley. 2nd., 4th. Hulda.
 CHOCOLATE DUTCH (24) SR. BUCK (9)1st., 3rd. Hulda. 2nd., 4th. A & M Emery. 5th. Bickley. SR. DOE (5)1st., 3rd. A & M Emery. 2nd. Hulda. 4th. Bickley. 5th. W. Clapsaddle. JR. BUCK (6)1st. Mel Emery. 2nd. A. Kovanik. 3rd. Hulda. 4th. A & M Emery. 5th. Mike's. JR. DOE (4)1st., Best Chocolate, 2nd. A & M Emery. 3rd., 4th. Hulda.
 TORTOISE DUTCH (10) SR. BUCK (3)1st., 2nd. A & M Emery. 3rd. Jack's Bunnies. SR. DOE (3)1st., Best Tortoise, 2nd., 3rd. A & M Emery. JR. BUCK (2)1st., 2nd. A & M Emery. JR. DOE (2)1st., 2nd. A & M Emery.
 STEEL DUTCH (3) SR. BUCK (2)1st., Best Steel, State Rbtry. 2nd. Jack's. JR. DOE (1) 1st. State.
 GRAY DUTCH (8) SR. BUCK (2)1st. Mike. 2nd. John Hutchinson. SR. DOE (2)1st., Best Gray, Bickley. 2nd. Hutchinson. JR. BUCK (2)1st., 2nd. Hutchinson. JR. DOE (2) 1st., 2nd. Hutchinson.
 SWEEPSTAKE POINTS: Bickley's Bunnyland 487. Hulda's Rbtry. 403. A & M Emery 260. Mel Emery & Sons 132. Pair O' Jacks Rbtry. 66. John Hutchinson 56. Barnes Rbtry. 36. State Rbtry. 18. Jack's Bunnies 17. Mike's Rbtry. 60. Eastview Rbtry. 16.

YOU CAN'T BEAT THE DUTCH

BUCKS COUNTY RABBIT & CAVY BREEDERS ASS'N.

Skipack, Pennsylvania (2-54) May 1, 1960 Judge: Marvin Godshall
 TOTAL DUTCH (50) BLACK DUTCH (16) SR. BUCK (3)1st. Delmas Cockey. 2nd., 3rd. Glenwood Sturgis. SR. DOE (5)1st., Best Black, 4th. Sturgis. 2nd. Cockey. 3rd. Frank Westley. 5th. Mabel Higgins. JR. BUCK (2)1st. Cockey. 2nd. Christine Hall. JR. DOE (6)1st., 3rd., 4th., 5th. Sturgis. 2nd. Westley.
 BLUE DUTCH (9) SR. BUCK (4)1st., Best Blue, Alan Kacsur. 2nd. Charles Bib. 3rd., 4th. Richard Holt. SR. DOE (3)1st., BEST OPPOSITE DUTCH, 2nd. Holt. 3rd. Carol Frees. JR. BUCK (1)1st. Cockey. JR. DOE (1)1st. Sturgis.
 CHOCOLATE DUTCH (12) SR. BUCK (3)1st., 2nd. Willow Rbtry. 3rd. Hall. SR. DOE (2)1st. Higgins. 2nd. Willow. JR. BUCK (2)1st. Amber Crest Rbtry. 2nd. Hall. JR. DOE (5) 1st., Best Chocolate, 2nd., 3rd, 4th. Willow. 5th. Sturgis.
 TORTOISE DUTCH (8) SR. BUCK (4)1st., Best Tortoise, BEST DUTCH, 2nd. Codkey. 3rd. Bib. 4th. Sturgis. SR. DOE (1)1st. Bib. JR. BUCK (2)1st. Frees. 2nd. Cockey. JR. DOE (1)1st. Frees.
 STEEL DUTCH (5) SR. BUCK (2)1st., Best Steel, 2nd. Sturgis. SR. DOE (2)1st., 2nd. Sturgis. JR. BUCK (1)1st. Sturgis.
 SWEEPSTAKE POINTS: Glenwood Sturgis 198. Willow Rbtry. 113. Delmas Cockey 96. Carol Frees 27. Christine Hall 25. Alan Kacsur 24. Amber Crest Rbtry. 12.

YOU CAN'T BEAT THE DUTCH

TRI COUNTY RABBIT CLUB

Toulon, Illinois (2-95)

May 15, 1960

Judge: Marshall Hazard

TOTAL DUTCH (5) BLACK DUTCH (1) SR. DOE (1)1st., Best Black, BEST DUTCH, D & D Rbtry.
BLUE DUTCH (1) SR. BUCK (1)1st., Best Blue, BEST OPPOSITE DUTCH, R. W. Miller.
TORTOISE DUTCH (3) SR. BUCK (1)1st., Best Tortoise, Miller. JR. BUCK (2)1st., 2nd.
Miller.

SWEEPSTAKE POINTS: No members showing.

YOU CAN'T BEAT THE DUTCH

SWEEPSTAKE STANDINGS - NEW SERIES

Romley's Rbtry-----694	Mike's Rbtry-----136
Parks' Petland-----552	Mel Emery & Sons-----132
Bickley's Bunnyland--487	Earl Murray-----118
Hulda's Rbtry-----403	Joe Weinhardt-----114
LaSalle Rbtry-----303	Willow Rbtry-----113
A & M Emery-----260	Cook's Rbtry-----113
Glenwood Sturgis----198	Alfred Handy-----108
Clyde L. Smith-----168	Mike Kronk-----98
Lawrence Daniles----222	

YOU CAN'T BEAT THE DUTCH

4
ADDITIONAL MEMBERS

Karl F. Schmidt; R# 5, Mt. Pleasant, Michigan 3-31-61
Mike Camp; 5956 Baker Rd., Huntington, West Virginia 5-13-60
Franklin J. Kramer; 515 Glenwood Trail, Elgin, Illinois 5-27-61
W. M. Wilmot; Heathfield, Wild Hill, Teversal, Notts., England 5-31-61

ELECT

DON REID
VICE PRESIDENT
A.R.B.A.

A.R.B.A. RABBIT and CAVY JUDGE
ONE OF THE FAITHFUL FEW

WANTED

Non-pregnant Dutch does - 3½ lbs. and up. Not interested in markings or pedigrees. Must be pure-bred Dutch, free of colds and other disease. \$3.00 each with express charges paid by the shipper. Write for particulars to:

SCIENTIFIC SMALL ANIMAL LABORATORY & FARM
Charles Hume, Prop.
401 West Golf Road, Arlington Heights, Illinois

<p>BLACK BLUE</p> <p style="text-align: center;">TORTOISE</p> <p style="text-align: center;"><u>BREEDING DUTCH</u> <u>SINCE 1899</u></p> <p style="text-align: center;"><u>IMPORTED BLOODLINES</u></p> <p style="text-align: center;">WINNERS FOR SALE Chas. Williams 402 Delaware Road, Kenmore, New York</p>	<h2 style="font-size: 2em;">FOR RENT</h2> <h2 style="font-size: 2em;">\$3.00</h2> <h2 style="font-size: 2em;">PER YEAR</h2>	<p>BILL TOT</p> <p style="text-align: center;">CENTEX RABBITRY "THE PARSONS"</p> <p>Black Blue</p> <p style="text-align: center;">D U T C H</p> <p style="text-align: center;">CALIFORNIANS Pedigreed Breeding Stock</p> <p style="text-align: center;">4000 Beverly Drive, WACO, TEXAS</p>
---	---	---

<h2 style="text-align: center;">FLORIDA STATE DUTCH RABBIT CLUB</h2> <p style="text-align: center;">Meetings Fourth Sunday of Each Month at Ruskin Agricultural Center, Ruskin, Florida</p> <p style="text-align: center;">Dutch are ideal rabbits for warm climates. Will ship to all islands via air mail f.o.b. Tampa</p> <p style="text-align: center;">Mrs. Martha Vrooman, Secretary 1402 - 12th. St. W., Palmetto, Florida</p>	<p style="text-align: center;">ALMACREST RABBITRY CHOCOLATE DUTCH</p> <p>Not a Toy, large cobby type A Top Commercial Strain that will win. Our Record: Four Straight Best Chocolate.</p> <p style="text-align: center;">JAMES D. COLLINS 3206 - 19th. AVE. W, BRADENTON, FLORIDA</p>
---	---

<p>HARRY ANTHONY, JR.</p> <p style="text-align: center;">120 Miller Ave., Meriden, Conn.</p> <p style="text-align: center;">BREEDER & EXHIBITOR O F BLACK - BLUE - TORTOISE</p> <h2 style="text-align: center;">DUTCH</h2>	<h1 style="font-size: 4em;">DUTCH</h1> <p>BLACK CHOCOLATE</p> <p style="text-align: center;">MRS. EDWIN P. HALL R. D. 2, QUAKERTOWN, PENNA.</p>	<p style="text-align: center;">MASSASOIT RABBITRY</p> <p style="text-align: center;">W. F. MacKINNON 604 CRESCENT ST., BROCKTON 44, MASS.</p> <p style="text-align: center;">SHOW PROVEN QUALITY</p> <h2 style="text-align: center;">DUTCH</h2> <p style="text-align: center;">BLACK & BLUE</p>
--	--	---

PUBLICITY ITEMS

Pedigree Books - 50 per Book - with stub-----\$1.25
 Shoulder Patches, Black & Chocolate, a must for your rabbitry coat.
\$1.00 each or 2 for 1.75
 Kintted Wool Ties, fine Ass't of colors, with Dutch worked in----- 1.95
 "Ideal Dutch" mats for use in having your stationary printed, or adds much to
 your advertising----- 1.00
 Large Chenille Back Patches, Black, Blue or Chocolate----- 2.50
 Special "Dutch" issue of Small Stock Magazine. State and Area Dutch Club Sec'y's
 are especially urged to contact Mr. Hall with regard to these for use as
 Publicity items for your clubs. Full particulars upon request.
 FOR ABOVE ITEMS WRITE: J. RUSSELL HALL: 18 William St., Hornell, New York.

SOUTH ERIE RABBITRY

TORTOISE
DUTCH

Member of
A.R.B.A. E.R.C. A.D.R.C.

BILL ZIMMERLEY
1418 W. 31, Erie, Pa.

DAVE'S RABBITRY

Outstanding
BLUE DUTCH

R# 1, Baird Cove Road,
Asheville, N. C.

RICHARDS' RABBITRY

BREEDER & EXHIBITOR
DUTCH -- ALL COLOURS

K. EARLE RICHARDS

8149 YONGE ST.,
THORNHILL, ONTARIO

BEN L. DARBY

BOX 351, VAN, TEXAS

BREEDER -- EXHIBITOR
OF
BLACK - BLUE - CHOCOLATE

DUTCH

RED, WHITE & BLUE
REGISTERED STOCK

EICH'S

RABBITRY

DUTCH

BREEDING -- ALL COLORS

CONTACT AT

TEMPLETON, IOWA
FOR YOUR
BREEDING & SHOW NEEDS

BUNNY ALLY DUTCH RABBITRY BLACK DUTCH MY SPECIALTY

JUNIORS & SENIORS - GOOD TYPE

Show Marked - \$5.00 & Up

RT. 5
AUSTIN, MINNESOTA

DUTCH

Small Cobby Type,
Short ears,
Reasonably priced.

BEAVER & QUINTON
Bloodlines

MARY E. STOHRER
R. R.# 1, Paragon, Ind.

PIERCE RABBITRY - REG. 1213 A.R.B.A.
1035 EAST 13th. ST., PUEBLO, COLORADO
COLORADO'S OLDEST DUTCH BREEDER
BLACK, BLUE, CHOCOLATE, STEEL, GRAY
COLORADO STATE FAIR WINS.

'56 Best Black, Best Dutch
'57 Best Blue, Best Opposite, Best Dutch. '58 Best Blue
'59 1st. Gold Sr. Doe, 1st. Small Roaster
SIX OTHER WINS AMONG FIRST FIVE PRIZES.

MEMBER AMERICAN DUTCH RABBIT CLUB

Pedigrees always sent promptly.

JANES RABBITRY

BLUE, BLACK,
CHOCOLATE & TORTOISE

DUTCH

1709 E. HENRY AVE.,
TAMPA 10, FLORIDA

DUTCH REPORTER
ADVERTISING RATES

Full Page - each issue \$10.00
 $\frac{1}{2}$ Page - each issue 5.00
 $\frac{1}{4}$ Page - each issue 3.00
Classified - 3¢ per word
Breeder Card-per year 2.00
Dbl. Br. Card-per year 4.00

SEND COPY TO:

MRS. W. A. WEINHARDT
R# 3, Manchester,
Michigan

"I'M IN DUTCH"

Breeder & Exhibitor

FANCY -- CHOCOLATES

H. H. LATIMER

4502 Shackelford, Ft. Worth, Texas

CONTEMPORARY-DUTCH

BLACK
BLUE
CHOCOLATE

GOLD

TORTOISE
STEEL
GRAY

5510 NIAGARA ST., Phone:
DENVER 16, COLORADO ATLAS 8-3726

"QUALITY-HAS-NO-SUBSTITUTE"

CAMP'S RABBITRY

Breeder of
Checkered Giants & Dutch

GEORGE CAMP

ARBA Judge & Registrar
Open for Show Judging
Engagements.
3853 Green Valley Road,
Huntington 5, W. Va.
Phone: JA 9-1141

OSMON'S
RABBITRY

BLACK - BLUE - TORTOISE

DUTCH

11817 So. HARDING
BLUE ISLAND, ILLINOIS

CLINT

SUE

DENNIS RABBIT RANCH

Some of the nations best bloodlines in
Black, Blue, Chocolate & Tortoise Dutch.

A few English Spots & Californians

Box 641

Phone: Duncan
Home AL 5-7064

Oklahoma
Office AL 5-8726

THE

Dutch Reporter

DEVOTED TO THE INTERESTS OF
THE BREEDERS OF DUTCH
America's Finest Rabbit

W.A. Weinhardt
France

"YOU CAN'T BEAT THE DUTCH" — AMERICA'S FINEST RABBIT

THE DUTCH REPORTER
Mrs. W. A. Weinhardt
R.# 3,
Manchester, Michigan

Sec. 3486 P.L.&R.
U.S. Postage
PAID
Manchester
Mich.
Permit No. 7

W.A. Weinhardt
France

Jack's Bunnies 3-14-61
R# 1,
Navarre, Oh.
10

Forwarding
Postage Guaranteed.

POSTMASTER: Form 3547 Requested.