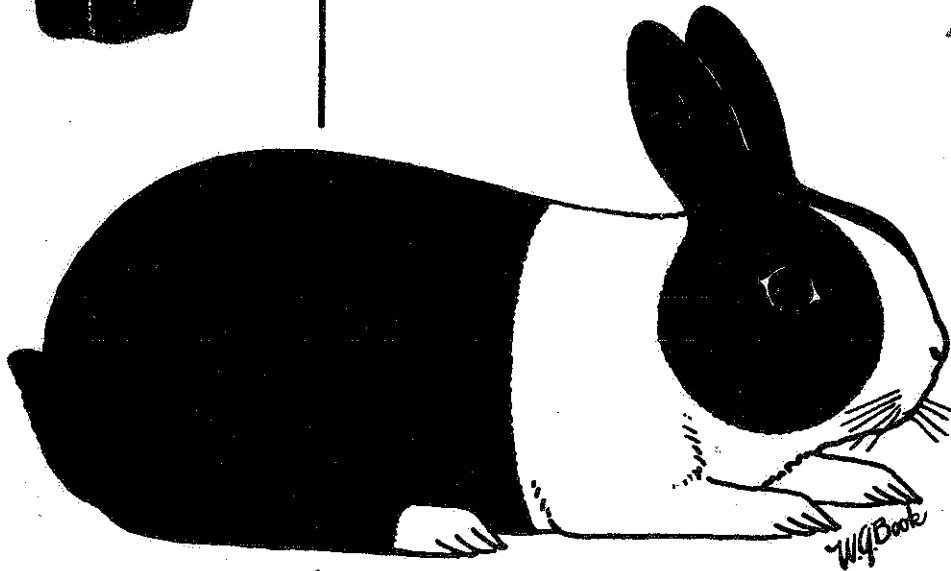




# The Dutch Reporter

*March April  
75*



DEVOTED TO THE INTERESTS OF THE  
BREEDERS OF DUTCH,

*America's Finest Rabbit*

*Membership List*

**American Dutch Rabbit Club**

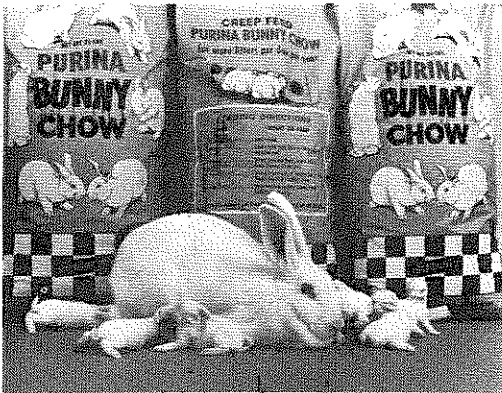


*Mar April 75*

# WOULD YOU BELIEVE?

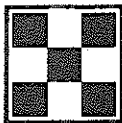
## ...250 pounds of meat per doe per year?

With good management, the complete Purina Rabbit Program makes 250 pounds of live weight per doe per year a realistic goal.

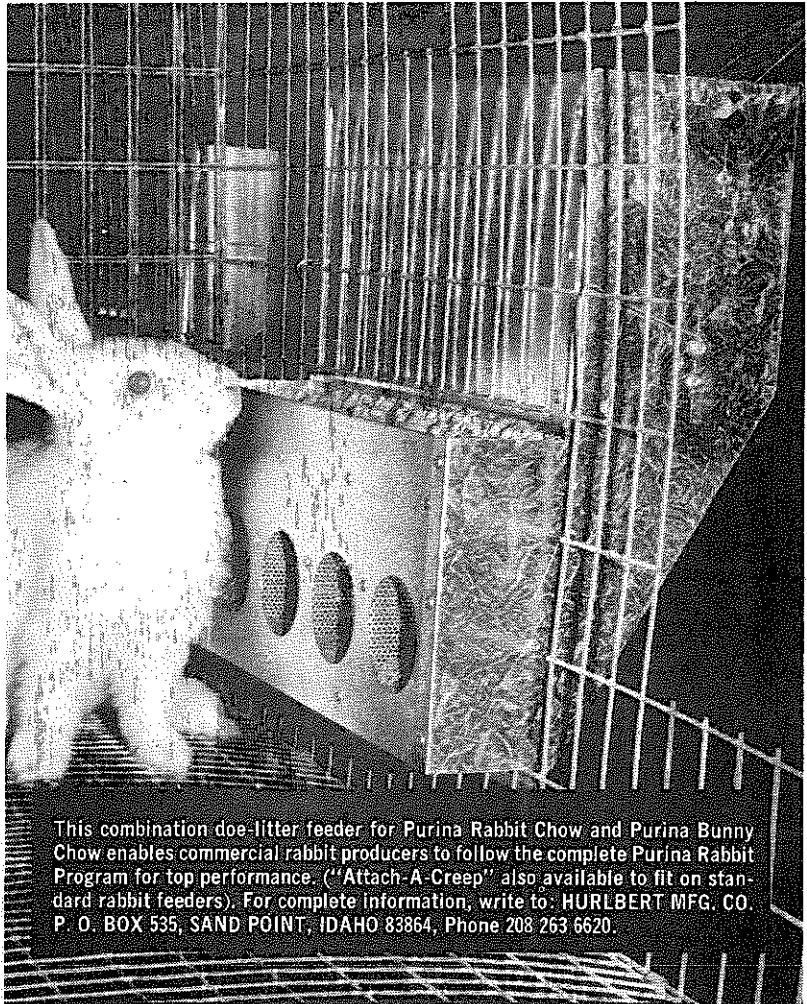


Follow the Purina Rabbit Program for maximum production at minimum cost.

For further information write:  
**RABBIT RATIONS**  
 Ralston Purina Company  
 Checkerboard Square,  
 St. Louis, Missouri 63188



**Ralston Purina Company**



This combination doe-litter feeder for Purina Rabbit Chow and Purina Bunny Chow enables commercial rabbit producers to follow the complete Purina Rabbit Program for top performance. ("Attach-A-Creep" also available to fit on standard rabbit feeders). For complete information, write to: HURLBERT MFG. CO. P. O. BOX 535, SAND POINT, IDAHO 83864, Phone 208 263 6620.

### THE PURINA RABBIT FEEDING PROGRAM

#### FOR BUNNIES

AGE	WHAT TO FEED
birth—2½ weeks	Doe's milk.
2½—4 weeks	Doe's milk, plus Bunny Chow creep fed as a supplementary feed.
4 weeks	Wean bunnies from doe's milk.
4-5½ weeks	Creep feed Bunny Chow only (Free Choice).
5½—6 weeks	Reduce amount of Bunny Chow fed. Begin feeding Rabbit Chow outside of creep feeder.
6 weeks	Stop feeding Bunny Chow.
6—8 weeks	Feed Rabbit Chow only (Free Choice).

Provide plenty of fresh, clean water at all times.

#### FOR DOES

WHAT TO FEED	AMOUNT
Rabbit Chow	4 to 8 oz. per day, free choice (according to size of rabbit).

Provide plenty of fresh, clean water at all times.

#### FOR BUCKS

WHAT TO FEED	AMOUNT
Rabbit Chow	3 to 6 oz per day (limit feed according to size of rabbit)

Provide plenty of fresh, clean water at all times.

25 16994 75/1

## PRESIDENT'S MESSAGE

Well what do you think of the first issue of the Dutch Reporter put out by the Kahlers. They sure done a whale of a job with gatherings of what they had from former and present secretaries. If you liked it write them and let them know.

I have a couple of committees that has been appointed for the rest of this year. Due to the new Dutch Editorial Policy put into effect by the Board of Directors at Syracuse it shall consist of five members. They now will be Chairmen of Committee the editor of Dutch Reporter, Bob & Kathy Kahler, appointed Publicity Directors, Elmer & Millie Hand and 3 appointed directors, Don Reid, Tom Shufflebotham and Bill Geitzenauer.

The election committee for this year will be Carl E. Decker Jr. Chairman, Donna Marie Raab and Boyd Gannon.

The next big show coming up after this issue of the reporter will be the National Dutch Show at Houston. Would like to see all of you there but I know it is not possible for some to go but if you can't send those good Dutch anyway. I hear the show will be all held in one building so there won't be any driving around.

Well good luck with the Dutch and I hope to see you at the shows.

Mike Stinehelfer

\* \* \* \* \*

## PEORIA SHOW

Bob & I were able to attend the Peoria Show on February 23, and of course they had another "small" one day show, something like 1,560 entries. I wrote for Oren Reynolds who judged the Dutch. Bill Eck from Springfield took best of breed with a chocolate (22 shown) and Tom Shufflebotham had best opposite with a Black (21 shown). We almost had enough Dutch Directors there for a meeting, Tom, Don Reid and Roger Eich. Bob & I had never met Roger before and we were quite happy we did meet him, although I think I shocked him . . . you see he got the impression probably from Don . . . that I was a little old lady in a crippled condition that kept me from Rabbit Shows. Well, a Spring Chicken I am not, Bob is 41 and I am 37. I keep very active, although I smoke like a stack and drink like a . . . . I enjoy swimming, ice & roller skating, baseball, basketball, football and volley ball. In fact I play Volley ball once a week. The other sports, I keep up with, I guess we should have had boys because I have taught the girls the love of sports. We also enjoy fishing and canoeing, I have also hunted and trapped with Bob. Anyway it was real nice talking with Roger and he promised us an article in the near future. Maybe this issue?????? The Avesings of Muscatine, Iowa were there and I know there were more Illinois Breeders but I keep remembering the English Spot breeders and I am sorry but I really can't remember the others. Al Seeman had the flu. so he wasn't able to attend.

Kathy Kahler

SECRETARY'S MESSAGE

Greetings to all. I have heard rumors that Spring is just around the corner, and while the situation in Minnesota is anything but Spring, I hope that the rest of the country is more fortunate. We have had our little bundle of spring joy, a bit ahead of time, in the arrival of a NEW SON, PAUL FREDERICK. Arrived the morning the latest blizzard started, and after his birth I went home to baby-sit, and spent the next three days snowed in. Didn't even have mail delivery, so by the time Friday came there was a bunch.

We have had many letters of appreciation for the first Dutch Reporter that the Kahlers published, and I'd like to add my appreciation. I am sure that the Kahlers enjoy knowing that the membership did appreciate their work and effort. It is no small task, editing a publication of this sort, and I'm sure that with the continued support of the officers and members of the ADRC that we will receive many more Dutch Reporters, that will be timely, interesting and of good quality. But keep in the back of your mind the fact that the Kahlers cannot do this by themselves. Thanks again to Bob, Kathy and the girls, for their fine effort.

This issue contains the official membership list of the ADRC. This is the list that will be used to mail the ballots from. If your name is not on the list, or if you note that others that you think should belong are not on the list, then get your membership renewed. You will note that the list is quite a bit smaller than last year, with only 453 members now, as compared to 599 on the 1974 list. We as members of the ADRC, are going to have to make a concerted effort to regain these lost members. Size alone does not make a good club, but with the number of breeders that raise and show Dutch rabbits, we should have many more members. Make it a special point to ask others to join our club - be a DUTCH BOOSTER.

Ballots will be sent out around May 1, 1975 for the nominations. Check the membership list before you vote. Non-members are not eligible. Judges must be members in good standing of the ADRC. I urge you to vote, but at the same time, do not vote just to be voting. Exercise your voting rights by selecting someone you feel is qualified, capable and will do the job properly.

By the time this DR reaches you, the National Dutch Show will be just around the corner. This is OUR show - the one and only show that represents the Nation and the Dutch. There may be larger shows occasionally, but none that represent our club, our members and our Dutch so well. There is just something special about these shows. I plan on attending, and hope to see you there.

Larry Bengtson

\* \* \* \* \*

- REMEMBER - National Dutch Show - April 27<sup>th</sup> - Houston, Texas
- REMEMBER - National Dutch Club Elections
- REMEMBER - ARBA Elections - Use your ballots - Don't throw them away.
- REMEMBER - NATIONAL Convention - November 10-13 - Milwaukee, Wisconsin
- REMEMBER - Check the membership list and any questions - write Larry.

T O R T O I S E     D U T C H

WE HAVE THE FOLLOWING LIST OF RABBITS FOR SALE  
FROM OUR HERD OF WINNERS FROM RHODE ISLAND TO  
CALIFORNIA - - - MINNESCTA - - - TEXAS

GROUP - 1

A rabbit buck or doe, 10 weeks or older with no disqualifications. These are not show rabbits however are from the same litters as our show stock. A great opportunity to start or add to your Torts at a reasonable price - - \$10.00 - - with pedigrees on each and eligible to register. These are delivered to the Houston airport and we ship at this price for two or more. AIR FREIGHT COLLECT.

GROUP - 2

These are better marked rabbits from the same litters and can be shown. Will have pedigrees and will register - 10 weeks or older. \$15.00 each on orders of two or more.

For the breeder who wants a show specimen that he can be proud of to take to the show, we have some from time to time. Priced by private treaty. You write your needs. We usually have 200-300 Tortoise on hand.

NOTE: No guarantee is given or implied as to reproductive ability on Juniors. We do not ship - June through September.

Don & Nelle Brady - 1461 Brittmore, Houston, Texas 77043

BRING YOUR TORTS TO HOUSTON. OVER \$200.00 CASH ON TORTS & TROPHIES

JOHN MELLOZZO V.S. DUTCH DEN NEWS

In reply to an article written in Dutch Den New's about the Toy Dutch; which has appeared several times in the Dutch Reporter, downing this proper size show rabbit.

As you state we have a standard calling for  $3\frac{1}{2}$ - $5\frac{1}{2}$  and ideal  $4\frac{1}{2}$  when we have a three different pound weight standard, this means that it is up to the judge to pick the best cobby, best type of rabbit on the table in front of him.

It does not mean that just because the ideal weight is  $4\frac{1}{2}$  lbs., that he or she must pick that particular rabbit.

We must understand that Ford is not building Model T's, he is building LTD's. Therefore we are to improve our Dutch Standard and breed, not to keep on breeding that 18<sup>th</sup> century Dutch, which in my mind as a breeder in all show rabbits for 52 years and I must say that I am for the ideal dutch to the weights not more than  $3\frac{1}{2}$ - $4\frac{1}{4}$  lbs.

This is the ideal dutch for show, not the  $4\frac{1}{2}$  pounds, let me set you clear, the  $4\frac{1}{2}$  pound ideal dutch is a racy rabbit, long head, long ears, grizzled ears as judge Karl Sauters always said. "Body type large, front quarters resembling the Belgian Hare, Hind quarters resembling the Flemish Giant. This ideal  $4\frac{1}{2}$  and  $5\frac{1}{2}$  pound dutch is a laboratory rabbit, not a show dutch."

We're straightening you out on young  $3\frac{1}{2}$ - $4\frac{1}{4}$  produce, 6,7 or 8 young in a litter. As you mentioned  $4\frac{1}{2}$  lbs., produce larger litters, we are breeding for QUALITY not QUANTITY. THEREFORE it is not how many rabbits that large rabbits produces, it's how many GOOD ONES. you Get.

As I read the second page of your article you are stating just what I'm saying that the ideal  $4\frac{1}{2}$  pound dutch, the proper dutch will raise a  $3$ - $3\frac{1}{2}$  dutch at about 10-12 weeks. This rabbit is only 3 months old then, therefore, what will he weigh at 1 year old - - -  
- - - - "Meat and Lab."

As for nastiness I see the small dutch very good. In all ways, good mothers, no bad teeth or cow hocks as you state.

I'm for the SMALL DUTCH, (SHOW DUTCH),  $3\frac{1}{2}$ - $4\frac{1}{4}$ ; to prove my point, judge for yourself, look at my dutch pictures, in all the Special Dutch Issues and compare these with other pictures entered of the Ideal  $4\frac{1}{2}$ . Also in my rabbitry the perfect one was born many times, take a good look at my pictures on dutch and prove it to yourself.

\* \* \* \* \*

We received this article in among some things from Doris and this is the kind of articles we like to receive-~~it~~ it shows you CARE about your favorite breed. Not only that you care but you will take the time to let us know WHAT Y O U think. I don't care what a man or woman does as long as she keeps her claws off of Bob BUT I do like a healthy opinion on DUTCH. I hope you get the idea-My Mom expressed it differently "People who live in glass houses - shouldn't throw bricks." NO Personalities JUST RABBITS OR Rabbit Policies. Kathy

## CHOCOLATE DUTCH

by

DON E. LOVEJOY

I am writing this article at the request of Kathy Kahler, I never could tell a lady no. I hope some will find it interesting and perhaps to a few, even beneficial.

Chocolates are our newest variety and methods of producing winning Chocolates are numerous. I will describe some of these, along with what has been working well for me.

First a little background. Charles O. Lewis of New York was the original "Mr. Chocolate Dutch" and was a friend and aid to me many (not too many) years ago. According to Mr. Lewis the strain of Chocolate that we have in this country was started in 1925 by an E. Mitchell of Northampton, England.

The original Chocolates were started with Black Dutch Havana crosses.

Mr. Lewis imported the first Chocolates into this country in 1935. He enjoyed great success with the variety. His method of breeding was to mate the best Chocolate buck obtainable with typey, deep colored black does. This produces black young. Does from this cross bred back to their sire produced some chocolate young. He selected the best chocolates and continued to introduce black occasionally as he believed this would help retain the good deep, rich chocolate color so greatly desired. This theory is subscribed to by many.

An English breeder Andy Storrer suggests Steel bred Black Does to Chocolate Bucks to produce good Chocolate color. This theory scares me a little because of the variables but have never tried it.

I have bred black into my chocolates and found, it to be very beneficial.

Proper type or better shape has long been a problem in this variety and our cobbler blacks have done much to improve and stabilize this feature. It may have also helped color. The one problem with this cross is that when you get Chocolate and Blacks in the same litter the well marked animals will usually be blacks.

Maybe it's just my buck, or do I live right?

After much trial and error we have decided that the best method for us is that straight bred is best bred. We breed only chocolate to chocolate, culling rigidly for type and color at all times. We have established, at least to our own satisfaction, that good color can be produced and maintained in this manner. It has the advantage of all chocolate young in the litters. In a litter of (6) two black young will reduce your chances by one third of having that top flight chocolate.

(CONTINUED)



## CHOCOLATE DUTCH CONTINUED

If this method is used two factors must be closely watched. Do not breed from an animal with light eye color as this is an indication that light body color is just around the corner.

Animals that lack depth of surface color should also not be used. Our Chocolate Doe which won Best Chocolate at the 1974 National Convention drew much praise for her deep rich color and is the product of 4 generations of chocolate to chocolate breeding.

Both heat and sunlight will adversely affect chocolate color and they should be protected from both.

Another factor to consider in selecting your chocolate breeders is their moulting characteristics. Some animals will moult heavily and for extended periods. By restricting your breeders to animals that moult very briefly or better yet, to those that slip a few hairs at a time and never really fall apart you can develop a line that will be in show coat most of the time.

Don

Our Thanks to Don. I will take the blame for all mis-spelled words.  
\*\*\*\*\*

## NATIONAL DUTCH SHOW

The Texas State Dutch Rabbit Club are planning a G R E A T SHOW for the exhibitors who will be attending the National Show and Convention on May 25, 26 and 27<sup>th</sup> this year.

The hotel is conveniently located with all sorts of shops and eating places and theatres within walking distance.

We have a host of specials so far and are expecting more. We have an energetic group working on ads for the catalog. We just hope that everyone can come.

The show will be in the Banquet Room of the hotel, with the Saturday night banquet being held in a smaller banquet room.

There is a penthouse supper club where you can eat, drink, dance and be merry.

If anyone wants to send specials or ads for the catalog, we sure will add them to our growing list. We are looking forward to a big show with Don Reid and Bob Berry judging the Open show and Doris Leibel judging the youth show.

Send anything you want to give to NELLE BRADY, 1461 BRITTMORE, HOUSTON, TEXAS 77043 and they will be forwarded to the right people.

Y O U    A L L    C O M E

\*\*\*\*\*

"Is there any significance to the fact that when a woman says she's all tired out, the doctor first looks at her tongue?"

"Everyman should learn to eat cautiously. He may marry some day."



SWEEPSTAKE SHOWS

APRIL

- 4-5,1975 California State R&CBA at Ventura, Calif., ADRC 70  
Elmer Paquette, 334 Acacia Road, Santa Paula, Cal.,93060
- 4-5 Smoky Mountain RBA at Knoxville, Tenn., MM575 ARDC 60  
Mrs. Ralph Simpson, 229 Hillcrest Dr., Knoxville, Tenn.37918
- 5 S.W. Kentucky RBA MM509 Wanda Balthrop, Box 644,  
Hopkinsville, Kentucky 42240
- 5 Moonlighters RC at Albert Lea, Minn. MM447, Arlene Lunning,  
RR #4, Box #16, Albert Lea, Minnesota 56007
- 5 Mall City RBA Inc. At (WHO KNOWS) MM512, Bob Stickley  
10076 Woodlawn Dr., Portage, Michigan 49081
- 5-6 Falls Cities RBA at Louisville, Kentucky, Harold Quick  
4619 S. 1st Street, Louisville, Kentucky 40214  
Funl
- 5 Tualatin Valley RBA at Hillsboro, Oregon, MM513 ADRC 75  
Sharla Lee, Rt. #3, Box 26, Newberg, Oregon 97132
- 5 Tidewater RBA at Zuni, Virginia, MM553 ADRC112  
Florence Zazzaretti, Box 54, Claremont, Virginia 23899
- 6 Van Wert County RBA, at Monroeville, Indiana MM510 ADRC79  
Mrs. Carl Lehrman Rt. #2, Monroeville, Indiana 46773
- 6 Fairfield Co. RBA at Norwalk, Conn. MM91 ADRC 16  
Mary Sweetland, Box 304 82 Fort Point St. E. Norwalk,  
Connecticut 06856
- 6 Delaware State RBA at WAlmington, Del. GG189 ADRC59  
May Hill, 2006 Jackson Ave., Wilmington, Delaware 19808
- 6 Lakeland RBA at Elkhorn, Wisc. Harold Peters, RFD #3,  
Lake Geneva, Wisconsin 53147
- 6 Polk County RBA at Des Moines, Iowa, MM590 ADRC56  
Dolores B. Lewis, 2716 Logan, Des Moines, Iowa 50317
- 6 Van Wert County RBA at Van Wert, Ohio, Elaine Lehrman  
RFD #2, Monroeville, Indiana 46773
- 6 Tibbar RBA Inc. at New Lenox, Ill. MM234, Muriel Reid,  
RFD #1, Box #216, Lockport, Illinois 60441
- 6 South Euclid RF at Painsville, Ohio MM680 ADRC100  
David Hardesty 10811 Detroit Ave., Apt. #1, Cleveland  
Ohio 44102

(CONTINUED)

SWEEPSTAKE SHOWS CONTINUED - 1975

APRIL

- 12 Jackson Purchase RBA at Murray, Kentucky, MM773 ADRC 115  
Donald Burchfield, 1603 Belmote Dr., Murray, Kentucky 42071
- 12 S. Jersey R&CBA at Cherry Hill, New Jersey, MM514, 37D  
Peter J. Parker 220 Mill Street, Moorestown, New Jersey, 08057
- 12-13 Texas State RBA at New Braunfels, Texas MM450 6D  
Mildred Stein, Star Rt., Box 3A, Castroville, Texas 78009
- 19 Solano Co. RBA at Vallejo, California MM585 ADRC 65  
Eunita Boatman, 801 Liberty Island Rd. Rio Vista, Calif. 94571
- 19 Eastern Carolina RBA at Raleigh, NC MM618 ADRC 26  
Mrs. H.E. Forbes, 3829 ~~Anger~~ Ave., Durham, N. Carolina 27703
- 19 Anderson Co. RBA at Anderson, South Carolina MM564 ADRC68  
Marlene Partain, Rt. #2, Box 156, Iva, S. Carolina 29655
- 19-20 South Plains RBA at Lubbock, Texas MM648 ADRC 94  
Mrs. Rosalie Berry, 513 E. Kent, Lubbock, Texas 79403
- 20 Golden West RBA at Anaheim, California MM695 ADRC104  
Sunny Harper, 20041 Clark St., Orange, California 92669
- 20 Decatur Area RB at Decatur, Ill. MM465 ADRC 27D  
Oren Redynolds, RFD #3, Box #509C, Decatur, Ill. 62526
- 20 Arbuckle RBA at Ardmore, Oklahoma MM715 ADRC92  
Beverly Jones, Rt. #1, Box #161, Ratcliff, Oklahoma, 73081
- 20 Zanesville RBA, Inc., at Zanesville, Ohio MM605 ADRC82  
Edna L. Andrews, Rt. #3, Box 141, Newark, Ohio 43055
- 20 Auto City RBA at Detroit, Michigan MM589 ADRC61  
Angie Ellis, 21224 Sherman, Southfield, Michigan 48075
- 20 Calumet RBA at Crown Point, Indiana MM651 ADRC63  
Jackie Lucas, 5928 I. Houston Ave., Portage, Ind. 46368
- 20 Indianapolis RF at Marion Co. Fairgrounds MM543 ADRC43  
Sherie L. Raiser, 1518 S. Victor, Indianapolis, Ind. 46241
- 26 All States RC at Big Springs, Nebraska, MM672 ADRC 72  
Billy Cooper, 1108 E. 12<sup>th</sup> Street, North Platte, Neb., 69101
- 26 Essex Co. R&CBA at (????????????), Massachusetts, MM714 ADRC109  
Shirley Krygowski, 2 Stuart Road, Peabody, Mass. 01960
- 27 Akron RC at Akron, Ohio MM637 ADRC 74  
Dorothy Krahl, 2555 Wadsworth Road, Barberton, Ohio 44203
- 27 Hi Plains RBA at Plainview, Texas MM665 ADRC71  
Susan Vayles, 2603 Upchurch, Plainview, Texas 79072

SWEEPSTAKE SHOWS CONTINUED - 1975

APRIL

- 27 Central Eastern Missouri RB at Vandalia, Mo. ADRC73  
Marjorie Card, Box 61, Frankford, Missouri 63441
- 26 Chatanooga RC at Ringgold, Georgia, Wilma Griffith, Sec'y.,  
5868½ Grubb Road, Hixson, Tennessee 37343
- 27 at Annville, Pennsylvania, Joseph W. Shutter, Secretary  
R. #2, Jonestown, Pennsylvania 17038
- 27 Connecticut RBA at Durham, Conn., Jessica Moran, Secretary,  
257 Tenn Road, Cheshire, Connecticut 06410
- 27 Grundy Co. RBA at Morris, Illinois, Kathy Kahler, Box 11  
Custer Park, Illinois 60418
- 27 Waterloo Area RBA at Waterloo, Iowa, Catherine Ross, Sec'y.,  
5728 Waverly Road, R#3, Cedar Falls, Iowa 50613
- 27 Rochester RBA at Henrietta New York, Richard Meisner, Sec'y.,  
3938 Pearl Street, Batavia, New York, 14020
- 27 Tri-Co RBA at Greenfield, Wisconsin, Philip Lohman, Sec'y.,  
11800 W. Howard Avenue, Greenfield, Wisconsin 53228
- 27 Shelby Co. RBA at Sidney, Ohio, Waunita Wolaver, Secretary,  
R #6, Sidney, Ohio 45365

25-26-27 NATIONAL DUTCH SHOW AT HOUSTON, TEXAS  
NELLE BRADY, SEC'Y., 1461 BRITTMORE, HOUSTON, TEXAS 77043

MAY

- 3 Nevada RBA at Fernley, Nevada, Lillian Mowrer, Secretary  
980 Chickadee Drive, Lemmon Valley, Nevada, 89508
- 3 Piedmont RBA at Moore, South Carolina MM732 ADRC86  
Debbie Smith Martello Road, Moore, S.Carolina 29369
- 3 Vancouver Island RBA, At Victoria, BC, Canada MM673 ADRC76  
John Thorn, 2809 Sooke Rd., Victoria, BC, Canada V9B 1Y8
- 3-4 Bernalillo County RBA at Albuquerque, N.M., MM544 ADRC93  
Margaret Henderson, Box 6322, Albuquerque, New Mexico 87107
- 3-4 Great Falls RBA at Great Falls, Montana, Gayle Dorr, Sec'y.,  
Aux RR, Box 507, Great Falls, Montana, 59401
- 3-4 Richland County RBA at Mansfield, Ohio, Mrs. Mildred Crabbs,  
Secretary, Box #222, R. #3, Mansfield, Ohio 44903
- 4 Central Wisconsin RBA at Marshfield, Wisconsin, Secretary,  
Charles Riley, 416 Nash Road, Wisconsin Rapids, Wisc., 54494

(CONTINUED)

SWEEPSTAKE SHOWS CONTINUED - 1975

MAY

- 4 S.W. Louisiana RBA at Sulphur, Louisiana, Secretary  
Lowanna Crosby, 413 Neely Road, Westlake, La., 70669
- 10-11 Tulsa RBA at Tulsa, Oklahoma, Henry Allison, Secretary  
15350 E. Pine, Tulsa, Oklahoma 74116
- 10-11 N. W. New Mexico RBA at Farmington, N.M., Elizabeth Thrift,  
Secretary, 6715 E. Main, Farmington, New Mexico 87401
- 10-11 Cumberland C&RBA at Cumberland, Maine, Andre Boucher, Sec'y.,  
23 Speirs Street, Westbrook, Maine 04092
- 11 Portsmouth RBA at Jackson, Ohio, Sophie Barton, Secretary  
Box #295, Jackson, Ohio 45640
- 16-17 Lorain Co. R&CBA at Norwalk, Ohio, Emma Lou Honoshofsky, Sec'y.  
8904 W. Ridge Road, Elyria, Ohio 44035
- 17 Saginaw Valley R&CBA at Saginaw, Michigan MM658 ADRC 57  
Wayne B. Wheeler, 8430 Battle Run Rd., Richmond, Mich. 48062
- 17 Cincinnati RBA at Cincinnati, Ohio MM207 ADRC 87  
Barbara Solzman, Box #1, Branch Hill, Ohio 45108
- 17 So. Colorado RBA at Pueblo, Colorado, Anna Smart, Secretary  
2610 Hyacinth, Pueblo, Colorado 81005
- 17-18 Williams Co. RBA at Montpelier, Ohio, Lowell Trausch, Sec'y.,  
R. #1, Box #22R, Paulding, Ohio 45879
- 18 Progressive R.C. at Kansas City, Sandy Martin, Secretary  
8802 E. 47<sup>th</sup> Street, Kansas City, Missouri 64129
- 18 Trumbull Co. RBA at Canfield, Ohio KK426 54C  
Emil Weiss, 419 Maple Street, Niles, Ohio 44446
- 17-18 Springfield RBA at Springfield, Missouri, MM709 ADRC 125  
Mrs. Robert D. Harralson, Rt. #2, Box 101-A, Williard,  
Missouri 65781
- 18 Finger Lake RBA at Syracuse, New York, Sam Rizzo, Sec'y.,  
32 Church Street, Honeoye, New York 14471
- 18 S. E. Wisconsin RC at Kansasville, Wisconsin Secretary  
Joseph Amman, 8939 Foley Road, Racine, Wisconsin 53402
- 18-19 Huron County RBA at Nowwalk, Ohio, Reva Ortner, Secretary  
R. #1, Box #153, Collins, Ohio 44826
- 24 Ohio State Dutch Club at Canton, Ohio, MM697 ADRC95  
Jack Wireman, 5475 Seeman St., S.W., RD #4, Box 127A  
Navarre, Ohio 44662

(CONTINUED)

SWEEPSTAKE SHOWS CONTINUED - 1975

MAY

- 24 National Capital RBA at Gaithersburg, Maryland, Secretary Ernest Preist, 25 Sunnyview Ct., Germantown, Maryland 20767
- 25 St. Louis R&CBA at St. Louis, Missouri MM723 ADRC89  
Bob Terhune, 8139 Blueberry Lane, St. Louis, Missouri 63134
- 25 Nebraska R&CBA at Omaha, Nebraska MM675 ADRC55  
Stephen Milhollin, 3304 Lafayette, Omaha, Nebraska 68131
- 25 Stark Co. RBA at Canton, Ohio, Al Butler, Secretary  
4310 Richville Dr., SW, Canton, Ohio 44706
- May 28 - June 1 Kanawha Co. Fair at Charleston, West Virginia  
Milford Fisher, Sec'y., R. #1, Box 455, St. Albans, WV. 25177
- MAY 31 Crawford Co. RC at Meadville, Pennsylvania, Lois Gilliland,  
Sec'y., Stein Hill Road, Box 73, Cochran, Penn. 16314

JUNE

- 1 Columbus RBA at Columbus, Ohio Francis Morgan, Secretary  
4819 Harbor Blvd., Columbus, Ohio 43227
- 1 Eastern Dutch RFC at Belle Grove, Pennsylvania, Secretary  
Warren McNamara, R. #2, Box #36, Reistertown, Maryland 21136
- 1 Erie RC at Meadville, Pennsylvania, Clifford Ramey, Secretary  
2006 W. 32nd Street, Erie, Pennsylvania 16508
- 7 Western South Dakota RB at Rapid City, South Dakota MM586  
ADRC 83, Betty Andre, Rt. #3, Box 528, Rapid City, SD, 57701
- 7 Broome Co. RBA at Whitney Point, New York, Gerald Moulton,  
Sec'y., R. #1, Box 181-2, Newark Valley, New York, 13811
- 7-8 Minnesota State RBA at Minneapolis, Minn., Jean Scherer, Sec'y  
R. #1, Box #59, Owatonna, Minnesota 55060
- 7 Minnesota State Dutch RC at Minneapolis, Minnesota, Secretary,  
Douglas Anderson, 4506 Nawadaha Blvd., Minneapolis, Minn. 55406
- 8 Coshocton Co. RBA, Inc., at Coshocton, Ohio, MM456 ADRC77  
Jack Wireman, 5475 Seeman Street, S.E., Rt. #4, Box 127A  
Navarre, Ohio, 44662
- 8 Black River Co. RBA at Black River Falls, Wisconsin, Secretary,  
Betty Murphy, 606 Harrison Street, Black River Falls, Wisc 54615
- 8 Teays Valley RBA at Chillicothe, Ohio, Jeanne Maddox, Sec'y.,  
R. #1, Box #125A, Frankfort, Ohio 45628

(CONTINUED)

SWEEPSTAKE SHOWS CONTINUED - 1975

JUNE

- 14-15 Northwest RBA at Monroe, Washington, Janice Coffeit, Sec'y.,  
19706 80<sup>th</sup> Ave., N.E., Bothell, Washington 98011
- 15 Mad River R&CBA at Urbana, Ohio, Louise Darling, Secretary,  
R. #1, Bellefontaine, Ohio 43311
- 21 Valley View RBA at Allegan Fairgrounds, Michigan, Secretary  
Delores Bouwkamp, R.#1, 3759 46<sup>th</sup> St., Hamilton, Mich.49419
- 21 Mora Area R&CC at Mora, Minnesota, ADRC 97  
Kathy Billstrom, Route #4, Mora, Minnesota 55051
- 23-26 Southern California Exposition at Del Mar, California MM642  
ADRC80, Mrs. Rene Bohn, Del Mar, California 92014

\*\*\*\*\*

N O T I C E

SWEEPSTAKE SANCTION REPORTS are required to be reported by the sponsoring club within 30 days. In our short tenure as Secretary of the ADRC, and considering only those shows which have been held since January 1, 1975, we are already at the same old problem that besets all club secretaries. LATE REPORTS! We do not wish to hurt innocent exhibitors by refusing to accept these late reports, but at the same time, these late reports are going to make timely sweepstakes reports impossible.

We will be gradually tightening the rules on this. With the new sweepstakes series starting in May, we will be adhering to the rules and unfortunately some of you are going to be hurt. Prompt your show secretaries to return these reports immediately.

Since we have not received the 1974 materials concerning the show sanctions from Mrs. Leibel as of this date, we once again cannot give any sweepstakes standings for 1974-75. This is out of my hands until I receive this material, but I assure you that 1975 will be a new year.

Another item worth mentioning, concerning Sweepstake sanctions, is that when you write for a Sanction, please include all the necessary information. We are not allowed to issue a sanction without the ARBA show number. We also need the date of the show, the location of the show and the secretary's name and address - plus the required fee of \$6.00. We receive many sanctions without many of the above items. And like Ripley's Believe It Or Not - we have received more than one letter with nothing but a check for \$6.00 - and nothing else. Our club does require sixty days prior to the date of show for sanction requests, but due to the publishing of the DR on a bi-monthly basis, it would be better if requests were at least 90 days prior to the show date. With your cooperation, we can serve you better.

Thank You.

Larry Bengston

SHOW REPORTS - 1975

1/5/75 - San Gabriel Valley CBA at Pomona, California

Judge: Fred Cremer Number Dutch 15

BOB: BLACK SB - Clipfort BOS: GRAY SD - Clipfort

Best Blk S.B. - Clipfort Best Blue J.B. - Lovejoy

Best Choc. S.B. - Clipfort Best Tortoise S.B. - Clipfort

Best Gray S.D. - Clipfort

POINTS: Clipfort 78½, Lovejoy 26, Fords 32

1/10-12/75 - Florida State RBA at Tampa, Florida

Judge: Jim Hillard Number Dutch 16

BOB BLUE J.D. - Randles BOS GRAY S.B. - Randles

Best Black SD - Fulcher Best Blue JD-Randles Best Choc SD-Randles

Best Tort SB - Randles B.Steel SB-Fulcher Best Gray SB-Randles

POINTS: Randles-74, Kissinger-32, Cummings-20, Fulcher-18

1/11/75 - State Line RBA at Adrian, Michigan

Judge: Harry Rice Number Dutch 51

BOB BLACK S.D. - Reed & Ormsby BOS BLACK S.B. - Reed & Ormsby

Best Black SD, Best Blue JB, Best Choc S.D., Best Steel JD, Best Gray

JB, ALL WON BY REED & ORMSBY

POINTS: Reed & Ormsby-328½, L.Lubinski-86, C.Gaddis-78, L.Cooper-39,

J Ery -39, RD Doty-24, Priestley Rbty-21, D.Holcomb-20, A.Ellis-18,

R.Morley-17, B. Gowanlock-12, M. Conklin-12

1/12/75 - Morrow RBA at Marion, Ohio JUDGE: Glen Carr NO. DUTCH 108

BOB BLACK JD - Chandler BOS BLUE JB - E. Chandler

Best Black JD-E. Chandler, Best Blue JB-Chandler, Best Choc SB - D.R.

Burkholder, B.Tort SD-C. Filliater, Best Steel SB - Mike's Rabbitry

Best Gray SB - Hands POINTS - E. Chandler - 434, B. House-212

Russ-L-Acre-132, D.R. Burkholder-109, L. Pierce-97, Mike's Rabb.-96,

A&W Morris-90, Napper's Rabb.-81, J. Gunsett-58, L. Burmeister-56,

Butler's Rabb-54, A. Ellis-39, J. Barnhart-37, Barton's-35,

H. Pierce-32, J.Ery-32, Hand n' Hand-30, C. Filliater-30, R.Wickert-31,

H. Brumfield-28, Eickenhorts-24, M. Knouff-24, D. Rexroth-24,

M. Burmeister 8, B. Troyer-8, Nicol-8

1/12/75 - Riverside County RBA at Pomona, California

Judge: Orian Onkst Number Dutch 29

BOB CHOC J.D.-Whitesell BOS STEEL S.B. - D. Lovejoy

Best Black SB - Clipfort, B.Blue SB-M.Lovejoy, B.Choc JD-Whitesell,

B.Tort JB-D. Lovejoy, Best Steel SB-D.Lovejoy, B.Gray SD-Clipfort

POINTS: Clipfort-148, K&G Whitesell-77, D&E Lovejoy-62

M. Lovejoy-51 Harper Reid-18

1/18/75 - Colorado RC at Denver, Colo., Judge Darrell Bramhall

No. Dutch - 60 BOB BLUE JB - Herman BOS BLACK JD - Herman

B.Blk.SR-R. Gerbrandt, B.Blue JB-Herman, B.Tort SD- S. Jones (Thunder-

bird) B.Steel SD-McNinch, B.Gray SB-McNinch

POINTS: Herman (Sweet Success)-594, R. Hauert-94, Thunderbird Rabbitry

(Jones)-76, R. Gerbrandt-57, KMcNinch-62, W. Gerbrandt-12

P. Gerbrandt-12

(CONTINUED)



## SHOW REPORTS CONTINUED - 1975

1/18-19/75 - Panhandle RBA at Amarillo, Texas, Judge: C.B. Groff  
 No. Dutch - 94, BOB BLUE SD - L. Hyer, BOS TORT SB - L. Hyer,  
 B.Blk JB-Hyer, B.Blue SD-Hyer, B.Choc JB-J. Armes, B.Tort SB-Hyer,  
 B.Steel JB-Armes, B. Gray JB-Armes. POINTS: L.Hyer-642, J.Armes-381,  
 R. Berry-129, B&M Clanton-121, J. Norris-87, R.Hauert-87,  
 K&J Norris-62, Schlaudt's-26, Dowdy-8

1/19/75 - R&CB of San Fernando Valley at Pomona, California  
 Judge: Elmer Paquette No. Dutch 18 BOB STEEL SB - D & E Lovejoy,  
 BOS BLUE SD - M. Lovejoy, B.Blk SB-M.Lovejoy, B.Blue SD-M.Lovejoy,  
 B.Choc SB-Whitesell's, B.Tort SB-D&E Lovejoy, B. Steel SB-D&E Lovejoy,  
 B.Gray SD-Green Acres POINTS: Mike Lovejoy-67, D&E Lovejoy-44  
 Green Acres-46, Whitesell's-18, J. Buddenhagen-14

1/24/75 to 2/2/75 - S.Western Expo & Fat Show at Ft.Worth, Texas  
 Judge: NOT LISTED No. Dutch 77 BOB - D & N Brady BOS - C & D Jones,  
 B.Blk.-C&D Jones, E.Blue JD-E Evertson, B. Choc-C&D Jones,  
 B.Tort - D&N Brady, B. Steel not listed, B. Gray JB-C&D Jones  
 POINTS: C&D Jones-562½, D&N Brady-354, R. Berry-135, R.Evertson-43,  
 Schlaudt's-32, P. Keese-22, Stewarts-22, J. Miller-15, D. Cartwright-  
 -12, R. Taylor-12, W. Smith-12, S. Cartwright-10, E & R Antwine-6  
 M. Stanley-5

1/25/75 - Inland Empire RBA at Spokane, Washington, Judge:Dale Wilcox  
 No. Dutch 21, BOB BLK JD-J. Kelly, BOS STEEL JB-N. Barber  
 B.Blk SD- Kelly B.Blue SB-Kelly, B.Choc SD-Kelly, B.Steel JB-Barber,  
 B.Gray JD-Kelly POINTS: Jim Kelly-108, Norris Barber-52½,  
 E. Houseman-43, T. Brulotte-41, S. Greene-20

1/26/75 - Cactus R&CBA at Tucson, Arizona, Judge: Art Nelson  
 No. Dutch 68 BOB CHOC. SB-Carlton's Rabbitry, BOS BLK JD-J.Milburn  
 B.Blk SB-J. Mull, B.Blue SD-J. Mull, B.Choc SB-Carlton's, B.Tort SB-  
 Carlton's, B.Steel JD-Carlton's, B.Gray SB-Carlton's POINTS:Carlton's  
 Rabbitry-546, J. Mull-100, Morrison-90, J. Milburn-76, Murphy-49,  
 Procunies-29, Carrasco-28, Fruch-22, Scheuer-30, Eskew-18, Barr-15,  
 E. Murphy-12

2/1/75 - Sonoma Marin RA at Santa Rosa, Calif., Judge:George Bayliss  
 No. Dutch 46 BOB GRAY SB - G. Hammerick, BOS BLACK JD-J. Paoli,  
 B.Blk JD-J. Paoli, B.Blue SD-C. Ferrari, B.Choc SB-L. Neilson,  
 B. Steel JB- J. Dale, B. Gray SB-G. Hammerick POINTS: A.Arrberg-108,  
 B.Kunic-67, G. Hammerick-82, C. Ferrari-66, L. Neilson-49, C. Rue-44,  
 J. Timmer-34, R. Hawkins-33, J. Paoli-29, J. Morgan-27, J. Dale-24,  
 T. Koch-21, C. Artman-18, N. Winkle-18, J. Hartzell-17, A.Bottrell-14,  
 K. Simone-14, V. Robinson-7

2/2/75 - Lima RBA at Lima, Ohio Judge: Phil Macy, No. Dutch 124  
 BOB CHOC SB-Wireman BOS BLUE SD-Fox, B.Blk SB-J. Sutton, B.Blue SD-Fox  
 B.Choc SB-J.Wireman, B.Tort SD-C. Filliater, B. Steel SD-Reed&Ormsby,  
 B.Gray SB-J. Sutton. POINTS: J. Sutton-245, R. Fox-200,  
 Goeglein & Shaw-196, E. Chendler-189, G. Morgan-155, B. House-152,  
 J. Wireman-148, L. Pierce-129 (CONTINUED)

SHOW REPORTS CONTINUED - 1975

LIMA RABBIT BREEDERS CONTINUED

POINTS - Reed & Ormsby - 113, Mike's Rabbitry-110, Girardot's - 78, Barton's-74, H. Pierce-64, Butler's-42, R. Wickert-36, C. Filliater-30, A&W Morris-28, J. Goldsmith-25, L. Burmeister-24, D.Nicole-16, L. Bennett-16, D.R.Burkholder-12, Quinn's-8

2/8/75 - No. California RBA at Roseville, Calif. Judge: Elmer Paquette  
No. Dutch - 72, BOB BLACK JB - Green Acres BOS BLUE SD-R.Hawkins,  
B.Blk JB-Green Acres, B.Blue SD-R.Hawkins, B.Choc SB-Clipfort,  
B.Tort JD-B.White, B.Steel SB-P&L Conley B.Gray SD - Green Acres  
POINTS: Clipfort-290, R. Hawkins-209, Green Acres Rabb.-194,  
P&L Conley-121, M.Morgan-78, G.Goodwin-57, B.Kunic-50, K. Simons-40,  
B.White-17, Riley's Rabb.-16, D.Roper-15, S. Peterson-6

2/9/75 - Superior C.Youth RC at Roseville, Calif. Judge:John Phillips  
No. Dutch 73 BOB BLACK JB-Green Acres BOS BLUE SD-R. Hawkins  
B.Blk JB-Green Acres, B.Blue SD-R. Hawkins, B.Choc JB-Clipfort,  
B.Tort SB-Clipfort,B.Steel JD-P&L Conley, B.Gray SD-Green Acres  
POINTS - Green Acres Rabb.-247, R. Hawkins-226½, Clipfort-211,  
P&L Conley-164, M. Morgan-65, B.Kunic-54, G.Goodwin-38, N.Raetz-32,  
J.Hartzell-28, Bettencourt-21, D.Roper-19, S. Peterson-16, Riley's-15,  
Pimental-14, Paris-12

2/16/75 - Tri-State RBA at Lancaster, Wisconsin, Judge: Hank Zimmerman  
No. Dutch 2 Both Disqualified

2/16/75 - Mid-Counties RBA at Tipton, Indiana, Judge: Harry Rice  
No. Dutch 34 BOB BLACK SD - Reed & Ormsby BOS BLACK SB-Reed&Ormsby  
B.Blk SD-Reed & Ormsby, B.Blue JD-Goeglein & Shaw, B.Choc JB-SAW Rabb.  
B.Steel JD-Reed & Ormsby, B. Gray JB- Reed & Ormsby  
POINTS: Reed & Ormsby - 258, Goeglein & Shaw-124, J. White-42,  
J.Ery-38, A. Ellis-26, SAW Rabbitry-12

2/23/75 - Peoria Area RBA at Peoria, Illinois Judge: Oren Reynolds  
No. Dutch 82, BOB CHOC. SD - Wm. Eck BOS BLACK SB-T. Shufflebotham  
B. Blk (21) SB-Shufflebotham, B. Blue (18) JD-Wm Eck  
B. Choc (22) SD-Wm. Eck B. Tort (13) SD-M. Osman, B. Steel (3)SB-Eck,  
B. Gray (5) SB- Bloomquist's Rabbitry POINTS: Wm Eck-250,  
Eich's Rabb.-234, T. Shufflebotham-119, M. Avesing-113, Fryer Tuck's  
Rabb.-82, D. Reid-71, B. Kahler-52, J. Marquardt-48, E. Bains-48,  
TEL Rabb.-47, M. Osman-44, Bloomquist Rabb.-40, Imon Sikes-36,  
Tink's-28, Veen's-26, LeShirdon's-15, L&J Archer-10, F. Byers-8  
D. Hallman-8

\* \* \* \* \*

Editor's note: I would just like to say THANKS to these show secretaries who turned in their show reports on time. Usually we only hear about the late show reports and not too much credit is given to a hard working show secretary, so if any of you readers see these show secretaries, tell them Thanks for a job well done. Also I was trying to experiment with the show reports and it uses too much space so I will type them like they have always been typed. We have had a suggestion to list the number in the color (Example Peoria Show) also to list Best Opp. Variety. What do YOU Think????? Kathy

## DUTCH EDITORIAL POLICY

**NAME:** The official organ of the American Dutch Rabbit Club shall be known as the DUTCH REPORTER.

**OBJECTIVE:** The object of the Dutch Reporter shall be to assist the American Dutch Rabbit Club to promote the Dutch rabbit, encourage the breeding of better Dutch, serve as an entertaining and educational media for the membership of the American Dutch Rabbit Club and provide a necessary link between the executive body and the membership.

**CONTENT:** The Dutch Reporter shall contain only those articles, reports, news items and advertising that can properly be considered pertinent to the American Dutch Rabbit Club, its members & the rabbit it sponsors. All material that appears in the Dutch Reporter shall be judged by whether it is educational, informative, constructive and/or newsworthy. It shall never be used for personal promotion, personal attacks or articles that would tend to reflect unfavorably upon the American Dutch Rabbit Club and/or the Dutch Rabbit.

The preceding paragraph shall not be construed to mean that articles of a controversial nature be rejected. To the contrary, controversy sparks interest, thought and participation. However all articles must reflect good taste, be constructive in intent and absolutely free from personalities. All articles used in the Dutch Reporter shall be correctly identified as to author.

**DUTCH REPORTER COMMITTEE:** The Dutch Reporter shall be the proper business of a committee of five. The Chairman of the Committee shall be the Editor of the Dutch Reporter, One Committee Member shall be the duly appointed Publicity Director. Three committee members shall be appointed from the Board of Directors by the President.

**DUTCH REPORTER COMMITTEE DUTIES:** The Chairman shall receive all articles, news and reports. Any article or item that might be considered in conflict with the content objective of this publication shall be submitted to the other committee members for ruling, by mail. It shall take a 2/3 vote of approval for it to be published.

The Publicity Director as committee member shall constantly and actively solicit advertising to help defray the expense of publishing a necessary and worth while Dutch Reporter.

The Board Members as Committee members shall be responsible for at least one article in each issue of the Dutch Reporter. In addition they shall solicit at least one article from each elected official during the calendar year. The articles should be of an instructional and educational nature.

**ADDITIONAL PROVISIONS:** Should any committee member neglect the responsibilities of his office and fail to follow the intent of this editorial policy, he shall be asked by the President to resign his said office, in case of failure to do so, The Board of Directors by a 2/3 vote shall declare the office vacant. It shall then be the duty of the President to make an appointment to fill the vacancy.

This editorial policy shall not be considered restrictive or censorship in any form. Rather it provides an outline for the editor and committee members to properly provide the type of official organ that will aid the growth of the American Dutch Rabbit Club, the promotion of the Dutch Rabbit and the usefulness of the Dutch Reporter.

All Officers shall receive the Dutch Reporter by first class mail. (Syracuse 1970, Board of Directors.)

DUTCH EDITORIAL POLICY

The preceding article was reprinted at the request of Tom Shufflebotham, although it was printed not too long ago in the D.R. Printed elsewhere in this issue is a list of the DR Committee, they were appointed by Mike. Anyway I thought at first it wasn't necessary to re-run this article BUT then I read some of that FINE PRINT and noticed " The Board Members as Committee members shall be responsible for at least one article in each issue of the Dutch Reporter. IN ADDITION they shall solicit at least one article from each elected official during the calender year." Are you wondering who the committee members are: They are Bob & I, Millie & Elmer Hands, Bill Geitzenauer, Don Reid and Tom Shufflebotham, now we had a nice article last month from Bill, looks like the Hands, Don and Tom had better get busy with an article for the D.R. Don't forget you have to get a Director to also write an article, now we have gotten one from Don Lovejoy, Lynn Cooper and Roger Eich. That just leaves one more Director or I should say Officer, Roger Guetschow maybe you will be getting some letters Roger. It would be nice if EVERY DIRECTOR could get someone to write an article. I can read just about anybody's handwriting, I can correct some English phrases, and I own a Dictionary; so don't let any of these things bother you, just sit down and write it on a paper bag, BUT PLEASE EVERYONE lets keep the D.R. supplied with Articles. The hardest thing about putting out a bulletin is a LACK OF ARTICLES because people think they can't write an article. Believe me, If I can YOU most certainly can.

Kathy

\*\*\*\*\*

IOWA SMALL ANIMAL ENTERPRISES

NEW ZEALANDS RABBITS DUTCH  
AMERICAN CAVIES

IOWA'S LARGEST BREEDERS AND LABORTORY SUPPLIER

BURKLEY EARLES  
JUDGE  
RABBITS - CAVIES

HOME OF THE WHITE CRESTED CAVY  
WE BUY LABORTORY GUINEA PIGS

BURKLEY and ROSE EARLES  
1720 So. 17<sup>th</sup> STREET, FORT DODGE, IOWA 50501

\*\*\*\*\*

BEST IN SHOW

Eric Murphy, son of Earl & Rita, of Scottsdale, Arizona, won BIS, at the last two CARBA Shows, with a Blue Dutch Doe. Eric competed in open class and won BOB both times and then won the B.I.S. among the Junior entry. Eric's club has a BIS for Juniors and Adults but the Juniors show in open class along with the adults. This show is the Central Arizona Rabbit Breeders Association, Phoenix, Date of shows: November 17, 1974 and March 9, 1975.

Rita Murphy

CONGRATULATIONS Eric, maybe we can get a BIS list going now.

FROM DALLAS CENTER, IOWA

We arrived home safe and sound from the Peoria show but you may be interested to know we were snow bound the next day and were unable to get to work. Bob asked me when I started raising rabbits and my records show that I purchased the first pair of rabbits (black dutch) in April of 1948. It was no accident that I obtained rabbits over pigeons or something else because it was the suggestion of my Doctor at that time to get them as a hobby to settle my nerves. I was fortunate to get Dutch however and have raised them ever since.

At one time showing Dutch seemed to be a big thrill, however, the last few years it has turned out to be just as much fun to raise some good ones and let other people buy them and do the showing. Selling breeding and show stock can create problems when one does a better than average business with new customers. It seems as though some people describe the type of rabbits they need one way and yet mean something entirely different, on the other hand, the repeat business more than makes up for all the headaches.

You were asking about the new system I've put into practice to cut down on the large volume of papers needed to keep records of not only the breeding rabbits but to include any sales as well. I find that this system is really a great time saver in many ways and also works out very good for customers who purchase additional breeding stock from you at a later date and want something along the same line.

I use regular loose leaf sheets and can usually get from 25 to 40 items on a page. A - is used for breeding. B - when the young are weaned and marked. C - at the time of sale.

EXAMPLES -

(A) EICH'S RABBITRY - DALLAS CENTER, IOWA 50063

DATE BRED	EAR #	COLOR	SIRE	COLOR	# YOUNG OR MISS	DATE BRED	EAR #	COLOR	SIRE	COLOR	# YOUNG OR MISS
4/17/74	G36	Choc	B.92	Choc	8	5/16/74					
4/17/74	W92	Blue	DOC	Blue	7	5/18/74					
4/17/74	H22	Choc	BB1	Choc	Miss 5/1/74 Sold Lab 5/3/74						

CONTINUED

DALLAS CENTER CONTINUED

(B)

EAR #	SEX	COLOR	DATE		# IN	# WELL	SIRE	COLOR	DAM	COLOR	DATE SOLD
			KINDLED	LITTER	LITTER	MARKED					
GB 6	D										
GB 7	B	Choc	5/16/74	8	6	B92	Choc	G36	Choc		10/1/74
GB 8	D										11/8/74
GB 9	B										
GB10	D	CHOC	5/16/74	8	6	B92	Choc	G36	Choc		10/7/74
WD42	D										11/8/74
WD43	B										11/20/74
WD45	B	Blue	5/18/74	7	4	DOC	Blue	W92	Blue		

(C)

EAR#	SEX	RABBIT NAME	DATE OF BIRTH	COLOR	SIRE	DAM	DATE SOLD	GRAND	BUYER'S NAME AND ADDRESS
								CHAMP. LEGS	
GB7	B	Eich's GB7	5/16/74	Choc	Eich B92	Eich G36	10/1/74		Ed.A. Beaver 1104 Washington St. Tuba, Wisc. Zip
GB8	D	Eich's GB8	"	"	"	"	11/8/74		Norman Zuba 888 West 5 <sup>th</sup> Tulsan, Ohio Zip
GB10	D	Eich's GB10	"	"	"	"	10/1/74		Wm. F. Luger 804 5 <sup>th</sup> N.W. Tulsan, Ohio, Zip
WD42	D	Eich's WD42	5/18/74	Blue	Eich Doc	Eich W92	11/8/74		Norman Zuba 888 West 5 <sup>th</sup> Tuba, Wisc. Zip
WD43	B	Eich's WD43	"	"	"	"	11/20/74		James Cook Jr. Dallas Center, Iowa 50063

Our THANKS to Roger Eich for this nice article. Just remember Roger stated that he used loose leaf paper and I think it would look a lot neater than the way I have it here.

\*\*\*\*\*

NATIONAL DUTCH SHOW - APRIL 27, 1975, NELLE BRADY, 1461 BRITTMORE HOUSTON, TEXAS 77043

\*\*\*\*\*

"To urge women to drive carefully, here's a tip valid and sage: 'In case you are in an accident, the paper will print your age.'"

LUCKY BUCK RABBITRY \*

COOPER'S HILLCREST RABBITRY

JANET & EDWARD CHANDLER \*

1220-14<sup>th</sup> STREET N.W. \*

CANTON, OHIO 44703 \*

PHONE: 216-453-7935 \*

BLACK and BLUE DUTCH \*

BLACK & TANS \*

ENGLISH SPOTS \*

SHOW & BREEDING STOCK \*

FROM TOP BLOODLINES \*

AVAILABLE MOST \*

OF THE TIME \*

12/75 \*

SOME OF THE BEST IN THE

M I D D L E W E S T

2601 SHARON HOLLOW ROAD

GRASS LAKE, MICHIGAN

49240

12/75

\* \* \* \* \*

COOK'S RABBITRY \*

4910 S. 43rd STREET \*

GREENFIELD \*

WISCONSIN 53220 \*

PHONE: 282-7454 \*

DUTCH - ALL COLORS \*

POLISH - WHITE SATINS \*

SOME DWARFS \*

4/75 \*

\* \* \* \* \*

COBB'S RABBITRY \*

DUTCH - BLACK & BLUE \*

FÖR SALE \*

OTHER COLORED DUTCH \*

AND TANS \*

SOMETIMES AVAILABLE \*

\* 603 N. 9<sup>th</sup> STREET \*

MILLVILLE \*

NEW JERSEY 08332 \*

PHONE: 609-825-6252 \*

12/75 \*

\* \* \* \* \*

CHOCOLATE

D U T C H

W. J. McNAMARA

ROUTE #2, BOX #36, REISTERTOWN, MARYLAND

21136

PHONE: 301-833-2286

12/75

MRS. MYRTLE MOHR, SECRETARY

229 W. CEDAR

ROSEMOUNT, MINNESOTA 55068

DUES:

INITIAL MEMBERSHIP FEE - \$5.00 PER FAMILY

\$3.00 PER YEAR THEREAFTER

A. R. B. A. MEMBERS ONLY

12/75

TORTOISE \*

A. SEEMAN \*

411 OAKVIEW AVENUE

\* JOLIET, ILLINOIS 60433

BLACK - BLUE

D U T C H

EXCLUSIVELY

12/75



IN MEMORIAM

We would like to extend our deepest sympathy to the family of Glenwood C. Sturgis Sr., of Cranston Heights Rabbitry, Wilmington, Delaware. Pop passed away December 19, 1974. Pop was very well liked by his fellow Dutchmen. We are sure he will be greatly missed.

\*\*\*\*\*

JUST A NOTE - When Suzy Sturgis wrote us about Glenwood, she also asked for information on the Natl Dutch Show as she would like to give a trophy in memory of Pop. I sent this information on to Nelle Brady and maybe there will be another Trohy at the National Dutch Show.

\*\*\*\*\*

RABBIT ASSOCIATION HONORS VETERAN BREEDER

BURKLEY EARLES, 1720 S. 17<sup>th</sup> St., was honored Sunday at a special meeting of the Iowa State Rabbit Breeders Association, held at the Ramada Inn in Des Moines. He and his wife attended the meeting.

Earles was nominated as an honorary member by the association, & was presented a plaque and a lifetime association membership. He is the only remaining charter member in the state organization, and has been a rabbit breeder for 52 years.

A member of the American Rabbit Breeders for 24 years, the Fort Dodge man has been a registrar of rabbits since 1953, a rabbit show judge since 1964 and a cavy (guinea pig) judge since 1971.

He helped organize four local rabbit clubs and held the offices of president or show superintendent of the local clubs from 1947 to 1968. Earles also was the originator of a recognized new breed of covies, the Crescent breed. He has been a member of the board of directors of the Iowa Rabbit Breeders Association, and has been on the board of directors and served as secretary of the Iowa State Dutch Rabbit Club.

Mr. & Mrs. Earles are the owners of Iowa Small Animal Enterprises and have 1,200 breeding covies and a 60-hole rabbitry of New Zealand and Dutch breeds.

In a special election Sunday, Earles was unanimously elected to the board of the Iowa State Rabbit Association and was also selected to be top judge for the Iowa State Rabbit Breeders show, to be held next November in Des Moines.

\* \* \* \* \*

This article was sent to us by Burkley, it had been printed in the local paper. CONGRATULATIONS, to a real nice "Dutchman". Burkley had sent a letter with the article and I hope he doesn't mind if I inform the membership that on January 7, 1975 he had a heart attack, and although he is up and around it will take from 8 months to a year for him to get back to normal. We hope you are going strong by the time of the National Convention, so that we can visit with you and your wife, Burkley.

\* \* \* \* \*

"It is almost impossible to open a closed mind."

RON TREE RABBITRY \*

EDITORS' COMMENTS

JAMES M. SANDERS \*  
ROUTE #7, BOX #435 \*  
ANDERSON, S. C. 29621 \*  
PHONE: 803-226-5358 \*

We would like to Thank the people who wrote, phoned or told us in person that they liked our first issue of the D.R.

BLACK & BLUE DUTCH \*  
STANDARD CHINCHILLAS \*  
SHOW & BREEDING STOCK \*  
AVAILABLE MOST \*  
OF THE TIME \*

This issue is pretty well filled up with the membership listing, but we do have a couple of articles on Dutch. This is what we want more of. YOU don't have to be an officer or director to write an article. So lets hear from some of you for the next issue.

12/75\*

\* \* \* \* \*

Helen Osman was kind enough to give us some old D.R.'s and we will from time to time have a reprint from one of them.

I am rather disappointed that the DUTCH ACTIVITIES as well as anything else pertaining to the coming National Convention is so secretive. If there are PLANS BEING MADE for a DUTCH BANQUET or ANY OTHER ACTIVITIES, lets hear about them so we can make our plans.

The same goes for the NATIONAL DUTCH SHOWS! The past two years there has been very little publicity either before and last year after the show. Let's hope that this year we can give you a complete COVERAGE OF THE SHOW, and EVENTS that take place in Texas. (NELLE- if you can get me the information by the 15<sup>th</sup> of May we can have it in the June 1st Issue. Boy! I can just about imagine what Nelle is saying now - "So she Thinks I am SUPER WOMAN?" Or worse yet she might be using one of my favorite expressions, but PLEASE Nelle if at all Possible, it would be nice to have the information. THANKS A HEAP.) TO NEXT YEAR'S DUTCH SHOW SPONSERS, we will be putting out the D.R., every other month so lets have some publicity on the show, even if it is just a paragraph a month.

The Spring shows here in Illinois are now going strong. The first 3 shows had fairly nice entries of Dutch.

There seems to be some confusion as to just what materials were turned over to us to print in the D.R. As of this issue ALL OUT-DATED material turned over to us has been printed. So if you have sent something to the former editor and it has not been printed, then it was lost in the shuffle. HOWEVER if you have sent in something and it was not printed, send it to us and we will run it in an upcoming issue. PLEASE check your ads if there is a mistake let us know.

Bob is done so here goes Kathy just to fill this little bit of space and wrap it up, so we can get it together, and in the mail. Then on to the Illinois State Constitution, State News and our own Grundy County Show. WOULD SURE LIKE TO HEAR ABOUT THE ACITIVITY OF ANY STATE DUTCH CLUB. ALSO Elmer & Millie Hand, Roger Guestchow, Tom Shufflebotham and Don Reid we are WAITING FOR AN ARTICLE. PLEASE THANKS TO ALL of you wonderful people who sent us not only articles but AD renewals.

Bob & Kathy

MIKE'S RABBITRY \* TEXAS STATE DUTCH CLUB OF TEXAS  
 \*  
 426 UNION AVENUE \* A FRIENDLY CLUB BOOSTING THE DUTCH RABBIT  
 BUCYRUS, OHIO 44820 \*  
 \* YEAR'S MEMBERSHIP - INDIVIDUAL - \$2.00  
 DUTCH - ALL COLORS \* HUSBAND-WIFE COMBINATION - \$3.50  
 \*  
 MIKE'S PET SHOP \* PAUL SMITH, SECRETARY  
 \* 7610 BRIDLE PATH  
 ALL KINDS OF SMALL \* HOUSTON, TEXAS 77044  
 ANIMALS and BIRDS \* PHONE: 713-458-3105

12/75

12/75

\* \* \* \* \*

COMPLIMENT'S OF \* THE "J" BAR RABBITRY  
 \*  
 THE NEW ENGLAND DUTCH RABBIT CLUB \* BLACK-BLUE-STEEL  
 \*  
 BARBARA DODGE, SECRETARY-TREASURER \* D U T C H  
 \*  
 VALLEY ROAD - CEDARVILLE \* A FEW WHITE NEW ZEALANDS  
 \* AND  
 RFD #2 \* POLISH  
 \*  
 BUZZARD'S BAY, MASSACHUSETTS 02532 \* 2418 ELLISON AVENUE  
 \*  
 DUES, \$2.00 Yearly \* SALEM, VIRGINIA 24153

12/75

12/75

\* \* \* \* \*

EASTERN DUTCH RABBIT FANCIERS CLUB  
 TWO SHOWS A YEAR - SPRING and FALL  
 TWENTY FOUR TROPHIES - - EACH SHOW  
 NEW MEMBERS WELCOME - - - - DUES - \$2.00 per year

WARREN McNAMARA, SECRETARY  
 ROUTE #2, BOX #36, REITSTERTOWN, MARYLAND 21136  
 "SPONSORS OF THE 1976 NATIONAL DUTCH SHOW"

2/76

\* \* \* \* \*

THE DIZZY "B" FARM

WE RAISE - D U T C H - - - BLACK - BLUE - CHOCOLATE - TORTOISE  
 WHITE NEW ZEALANDS GIANT CHINCHILLAS

THE BROWNINGS  
 ROUTE #1, BOX #87  
 DEKALB, MISSISSIPPI 39328

12/75

M I L L E R ' S R A B B I T R Y

D U T C H

JOHN - - - - MILDRED

BOX 97, HARPER, IOWA 52231

BLACKS - BLUES - CHOCOLATES - TORTS  
USUALLY SOME VERY GOOD ONES FOR SALE

PHONE: 515-635-2151

\* CRESCENT CITY RABBITRY

\* RICHARD K. HOSELLE

\* 6101 BIENVENUE STREET

\* NEW ORLEANS, LA. 70117

\* PHONE: 504-279-2991

\* QUALITY - DUTCH

\* BLACK - CHOCOLATE

\* WILL SHIP

\* ALL INQUIRIES ANSWERED

3/76

12/75

\* \* \* \* \*

DON & NELLE BRADY \*

COMPLIMENT'S OF

ONE BREED - ONE COLOR \*

THE OHIO STATE DUTCH CLUB

TORTOISE DUTCH \*

BREEDING \*

MRS. MILDRED HAND

SHOWING - PROMOTING \*

DUTCH RABBITS \*

1144 WALNUT STREET

1461 BRITTMORE \*

HOUSTON, TEXAS \*

77043 \*

LANCASTER, OHIO 43130

PHONE: 464-3780 \*

12/75 \*

12/75

\* \* \* \* \*

A. R. B. A. RABBIT and CAVY JUDGE

\* der DUTCH HUTCH

D O N R E I D

\*BLACK-BLUE-CHOCOLATE

ROUTE #1, BOX 216, LOCKPORT, ILL. 60441

\* T O M L O C K

PHONE: 815-485-6517

\* R. R. #4

DUTCH - BLACK and BLUE

\* BOX #25

FLEMISH - SANDY and WHITE

\* KANKAKEE, ILLINOIS

NEW ZEALAND WHITES

\* 60901

Ph. . . . .

\* NO SHIPPING

12/75

12/75

\* \* \* \* \*

MEIER & SHANABERGER \*

THE LORD NELSON STRAIN

B R E E D S \*

25 YEARS OF SELECTIVE BREEDING TO DEVELOP

BLACK DUTCH-BLK ENGLISH \*

A STRAIN OF 4# DUTCH EXCELLING IN

NEW ZEALANDS-STD. CHINS\*

COLOR, FUR and TYPE.

SOMETIMES EVEN HAVE THE \*

OCCASIONAL ONE TO SELL \*

B L A C K S and B L U E S

AL MEIER \*

JOHN L. NELSON - BREEDER and EXHIBITOR

RT. 1, BOX 136A \*

ROUTE #3, BOX 1114

COWPENS S.C. 29330 \*

CRETE, ILLINOIS 60417

12/75 \*

12/75

## MEMBERSHIP - 1975

## ARIZONA

Banovich, Mrs. Jean - 3740 W. Buckeye Rd. Phoenix 84009	4-21-75
Carlton, Winton - 4431 N. Anna Park Dr. Tucson 85705	9- 9-75
Eskew, Laura - 2339 W. Cherry Lynn Rd., Phoenix, 85105	3-6-76
Good, Michael - 3926 E. Cortez, Phoenix 85028	12-31-75
Hershman, Karen - 5872 Helena St., Tucson, 86706	12-31-75
Holloway, David - Box 728, Chino Valley, 86323	12-31-75
Kellog, Bonnie -1620 N. 30 <sup>th</sup> Ave., Phoenix, 85009	9-9-75
Milburn, Jennifer - 9450 Merrill Way, Tucson, 85715	12-20-75
Mull, Jeannene - R 2, Box 7610, Tucson, 85715	3-6-76
Murphy, Eric - 6428 E. Jenan Dr., Scottsdale, 85254	1-9-76
Murphy, Earl & Rita - 6428 E. Jenan Dr., Scottsdale, 85254	2-11-76
Scheuer, Arlene - 4111 W. Monte Cristo Ave., Phoenix 85023	6-17-75
Williams, Jesse - 2801 W. Lincoln St., Phoenix, 85009	Life

## WEST INDIES

Ashing, Brian - 6 Coblentz Gardens St. Anns. Trinidad	9-17-75
---	---------

## ALASKA

Hill, Leo - 3972 E. 6 <sup>th</sup> Ave., Anchorage, 99504	12-26-75
--	----------

## ALABAMA

Bow-Berg Rabbitry - R. 1, Box 28, Ashville, 35953	2-19-76
Brannon, W.C. - 1814 Pinecrest Dr., Montgomery, 36107	3-6-76
Hughens, Buddy - R. 1, Box 358, Helena 35080	10-4-75

## CALIFORNIA

Allen, James, 3507 Westmount Ave., Los Angeles 90043	1-31-76
Anderson, Roderick, 760 Anderson Dr., Los Altos, 94022	12-20-75
* Bayliss, George, Box 504, Hayward, 94543	Life
Beck, Camille, 3897 Yerba Buena Ave., San Jose, 95121	9-9-75
Bettencourt, Frank, 4900 79 <sup>th</sup> St., Sacramento, 95820	3-6-76
* Bidwell, J.L., 1025 N. Dudley, Pomona, 91768	12-20-75
Buddenhagen, Julie, 5030 August St., San Diego, 92110	12-31-75
Clark, Larry I., 6001 Oakhaven St. Bakersfield, 93308	10-4-75
Conley, Paul & Laura, 8353 Sheldon Rd., Elk Grove, 95624	3-21-76
* Cremer, Fred, 9704 Enger St., Bakersfield, 93308	9-30-75
Delzell, Robert O. 1345 DeSoto Ave., Burlingame, 94010	9-18-75
Ecklund, Steve, 941 Helena Dr. Sunnyvale, 94087	8-29-75
Finley, Lee & Lisa, 3191 Sebastopol Rd., Santa Rosa, 95401	9-18-75
Ford, Phillip & Diane, 7331 Lugo Ave., Hollydale, 90280	9-13-75
Goodwin, George, 2229 Benita Dr., Rancho Cordova, 95670	8-8-75
Hackett's Daisy Hill Bunny Farm, 1350 E. Barstowe Ave Fresno, 93710	8-18-75
Hammond, Sue, 7350 Quinn Pl., Loomis, 95650	12-20-75
Hartzell, Julie, 4942 Brookglen Wy., Carmichael, 95608	2-11-76
Hawkins, Walt, 647 Middlefield Rd., Salinas, 93901	12-20-75
*Holland, Dave, 456 Lemon, Walnut 91789	4-1-76
Holman, Steve & Lori, 3619 2nd Ave., LaCrescenta, 91214	4-13-75
Johnson, Ralph Jr. 17792 N. Davis Rd., Lodi, 95240	9-18-75
*****	
* Denotes Judges	Check last page if your name is not here.

MEMBERSHIPS - 1975  
CALIFORNIA CONTINUED

Jones, Carrie 6382 Hwy 99, Madera, 93637	9/9/75
Krueger, Melvin & Carol, 838 Sage, Vandenberg AFB, 93437	9/9/75
Lees, Carolyn, 372 Gordon Ave., San Jose, 95127	5/8/75
* Lovejoy, Don, 1033 N. Dudley St., Pomona, 91768	2/14/76
Lovejoy, Mike, 1033 N. Dudley St., Pomona, 91768	2/27/76
Lowers, Vickie, 826 Manda Ct., Santa Maria, 93454	9/17/75
Odell, Betty, 2851 Pine St., Napa, 94558	12/31/75
Paris, Mike, 3660 Val Verde Road, Loomis, 95650	12/31/75
Raetz, Norton, 615 2nd Street, Wheatland, 95652	1/15/76
Reid, Harper, 4 Christina, Camarillo, 93010	3/6/76
Riley, Doris, 13115 Redwood Ave., Boulder Creek, 95006	1/27/76
Ryan, Joanne, R. 2, Box 2299J2, Elk Grove, 95624	11/13/75
Salas, Janice & Martin, 727 Linfield St., Azusa, 91702	9/18/75
Samson, Mrs. Bobbi, 22085 Bonness Road, Sonoma, 95476	2/27/76
* Sprague, Robert, 4410 Sycamore Ave., Sacramento, 95841	9/30/75
Stewart, Theodore, 2940 Cortex, Oxnard, 93030	8/7/75
Weir, Leonard, 3981 Lindsay, Riverside, 92509	4/1/76
Toy, William, 6024 McMahon Drive, Sacramento, 95824	9/9/75
White, Bessie, 44 Alta Loma, Benicia, 94510	4/21/75
White, Danilee, 702 Pelton Avenue, Santa Cruz, 95060	12/30/75
Whitesell, Gail, 17266 Simonds St., Granada Hills, 91544	12/31/75
Wiking, Carole, 36539 Camares, Palmdale, 93550	12/11/75

CANADA

Dahmer, Mary, Box 122, Mount Albert, Ontario, LOGLMO	2/27/76
Bates, C.R., 6549 Lockside Dr., R#3, Victoria, BC	1/17/76
Bryczka, Jerry, 283 Wilson St. E. Ancaster, Ontario L9G 2B8	2/10/76
Eyma, P.J. Chinook Ranch Cochrane, Alberta,	6/14/75
Gagnor, Girard, Rt. Ville-Marie, Beaumont GORICO. Co. Bellechasse P. Quebec	12/31/75
Marcotte, H. M. Box 153, Erickson, BC VOB 1K0	2/15/76
Moffatt, Charles, Musgrave Lane, North Sidney, Nova Scotia, C	12/31/75
Page, William 3443 E. 5 <sup>th</sup> Ave., Vancouver V57 1P6	12/11/75
Stewardson, Mark, 92 Britannia Ave., London, Ontario N6H 1J2	8/15/76
Thordpe, Mrs. Jennie, 63 George St., Markham, Ontario L3P 2R9	12/20/75

COLORADO

Classen, Mrs. Opal, 1038 Co. Rd. 323, Rifle, 81650	12/11/75
Golden Nugget Rabbitry, R.#2, Box 130, Platteville, 80651	12/6/75
Herman, Patrick, 3500 Lafayette St., Denver, 80205	3/1/77
Herman, Joseph, 3500 Lafayette St., Denver, 80205	1/27/76
Jones, Steve, 10 Ponderosa Lane, Parker, 80134	1/19/76
Shults, Olen, Box #10, Meeker, 81641	12/31/75

\* Denotes Judges      If your name is not listed check last page.

## MEMBERSHIPS - 1975

## CONNECTICUT

Chambers, Ross, 97 Farmstead Rd., E. Hartford, 06118	9/9/75
Church, Betty & Ronald, 80 School St., Marion, 06444	4/20/75
Leighton, Reginald, R. 2, Winsted, 06098	9/9/75
Osgood, Timothy, 410 Somers Rd., Ellington, 06029	4/21/75
Rendigs, Mrs. Kim, 20 Lanesville Rd., New Millford, 06776	2/7/76

## DELAWARE

Hill, May 2006 Jackson Ave., Wilmington, 19808	5/10/75
--	---------

## FLORIDA

Carlock, James, 6618 4 <sup>th</sup> Ave., N. St. Petersburg, 33710	2/12/76
* Cummings, Marvin, 11506 N. 53 <sup>rd</sup> St., Tampa, 33617	9/9/75
Jones, Irving, 15870 SW 216 <sup>th</sup> St., Miami, 33170	4/21/75
Kissinger, Bill & Gloria, 3103 W. Osborne Ave., Tampa 33614	9/9/75

## GEORGIA

Gibson, Mike, 1582 Delmore Dr., Jonesboro, 30265	12/31/75
Keown, Huel, R. #4, Canton, 30114	4/21/75
Lucas, Dave, 4492 Hendrix Dr., Forest Park, 30050	12/31/75
Mealer, Clarence, R. 7, Bowmar Rd., Douglasville, 30027	9/9/75
Portwood, Mr. J.N., 352 Lane Dr., Mableton, 30059	4/21/75
* Simpkins, C.F. 4194 Mercer Rd., Decatur, 30032	9/20/75
Yasinski, Thomas, 6509 Grannada Dr., Forest Park, 30050	3/14/76

## ILLINOIS

Anderson, Ivar, 909 Prospect Dr., Gages Lake, 60030	7/30/75
Archer, Janice, 16910 S. Cicero Ave., Tinley Park, 60477	12/31/75
Bains, Eugene J., 1804 E. Cloud, Bloomington, 61701	12/11/75
Bernhardt, Dale, Box 424, Worden, 62097	3/5/76
Curl, Gary, 2127 N. 17 <sup>th</sup> St., Springfield, 62702	9/9/75
Dunlap, Paul, 6953 Cemetary Rd., Rockford, 61103	9/18/75
Eck, William, 127 Eastdale, Springfield, 62703	3/21/76
Elliot, Bob, Box 67, Downers Grove, 60515	2/12/77
Flamm, J. L. Box 146, Mound City, 62963	1/21/76
Foulkes, Walter C., 175 N. 11 <sup>th</sup> Ave., St. Charles, 60174	5/8/76
Johnson, Mrs. Erma, R.1, Box 197, Aledo, 61231	2/20/76
Kahler, Bob & Kathy, Box 11, Custer Park, 60418	8/24/75
Kim Matia, R.1, Parker Rd., Box 185, Lockport, 60441	4/21/75
Knitter, Elmer, 205 E. Pearl St., Danvers, 61732	9/5/75
Kuzdas, Lisa, 211 Roberts Rd., New Lenox, 60451	1/15/76
Lock, Thomas, RFD #4, Box #25, Kankakee, 60901	11/2/75
* Miller, Ivan, Box #25, Maquon, 61458	1/21/76
Nelson, John, R#3, Box 1114, Crete, 60417	Life

\* Denotes Judges      If your name is not listed check last page.



## MEMBERSHIPS - 1975

## ILLINOIS CONTINUED

Norval, William & Suellen, R. #2, Manito 61546	11/13/75
Olic, Nancy, 611 N. Brainard, LaGrange Park, 60525	9/17/75
Osmon's Rabbitry, RFD #2, Princeton, 61356	Life
Reeves, R. B. DVM., R#2, Box #279, Chicago Heights, 60411	2/27/77
* Reid, Don, R#1, Box 216, Lockport, 60441	Life
Seeman, Al, 411 Oakview Avenue, Joliet, 60433	Life
Veen, Neal, 9239 S. Homan, Evergreen Park, 60642	5/2/76
Veen, Fred, 10900 S. Troy Avenue, Chicago, 60655	2/8/76
Veen, Ken, 10900 S. Troy Avenue, Chicago, 60655	7/27/75
Whitmore, Jack, 2710 E. Monroe, Springfield, 62703	9/17/75

## INDIANA

Bollinger, Harold, R. #4, N. Manchester, 46962	4/20/75
* Gaddis, Carlton, R#1, Box 158, Winchester, 47394	4/12/75
Gilliam, Tom, R#1, Box 147, Clayton, 46118	9/9/75
Harding, Thomas, Box 462, Farmersburg, 47850	12/20/75
Kent, Tamala K., 5279 Central Ave., Portage, 46368	9/18/75
King Carolyn, Box 117, Royal Center, 46978	3/14/76
Koch, Arthur, 7515 County Line Road, New Albany, 47150	3/3/76
Korn's Rabbitry RFD #5, Box 39, Anderson, 46011	9/9/75
Krider, V.M., Box 29, Middlebury, 46540	1/21/76
McKeeman, Alvin, 14929 Bluffton Rd., Ft. Wayne, 46819	10/11/75
McKeen, Candy, 11 Brook Knoll, Bedford, 47421	1/2/76
Mauch, Jeannine, 1822 Renfrew Dr., South Bend, 46614	12/31/75
Middleton, Ronald, 230 N. Foster, Albany, 47320	6/3/75
Ormsby, Bruce, 38 Clay St., Box 72, Markle, 46720	8/1/75
Rawlings, Charles, 11724 Monroe Place, Crown Point, 46307	1/21/76
Richards, Steven, Box 227, Huntertown, 46748	1/25/76
Shriver, Kenneth, R. #1, Box #81, Winchester, 47394	1/21/76
* Shufflebotham, Tom, Box 257, Valparaiso, 46383	Life
Sutton, Donald, Box 39, Hudson, 46747	3/6/76
Walker, Bobbie Joe, 260 W. Thompson Rd., Indianapolis 46217	9/17/75
Willaimson, Scott, 3863 N. 600 W. LaPorte, 46350	9/17/75
Humbert, Robert, 715 Leopold St., Huntington, 46750	Life

## IOWA

Avesing, Tom, 415 Linn St., Muscatine, 52761	4/21/75
Bennett, Irene, 1507 Riverside Blvd., Sioux City 51109	4/20/75
* Bramhall, Darrell, 1006 12 <sup>th</sup> NE., Mason City, 50401	3/1/76
Clark, William, Jessup, 50648	3/14/76
Cross, Ronald 4104 72nd St., Des Moines, 50322	5/9/75
* Earles Burkley, 1720 So. 17 <sup>th</sup> St., Fort Dodge, 50501	7/27/75
Eich, Roger & Bonnie, Box 361, Dallas Center, 50063	2/27/76
Erickson, Dan. R2, Hwy 38N, Muscatine, 52761	12/31/75
Frieze, Martha, 3316 Ave. I, Council Bluffs, 51501	12/31/75
Hagerman, Tom, R.1, Muscatine, 52761	7/28/75

\* Denotes Judges      If your name is not listed check last page.

## MEMBERSHIPS - 1975

## IOWA CONTINUED

Hicks, Deborah, 301 North Kent, Knoxville 50138	9/5/75
Larson, David, Rt. #3, Box 475C, Council Bluffs, 51501	3/14/76
Miller, John W., Harper, Iowa 52231	2/16/76
Morgan, Priscilla, Box 128, Pleasant Valley 52765	9/18/75
Nelson, L. H., Birmingham, Iowa 52535	9/18/75
Nikkel, Kern, R.#1, Box #56, Kellogg, 50135	12/11/75
Paul, David, 1718 E. Wartous, Des Moines, 50320	10/21/76
Peterman, Steven, Box #26, Washta, 51061	4/20/75
Redies, Marvin, R #2, Waverly, 50677	9/17/75
Rowan, Jeff, Harcourt, Iowa 50544	3/14/76
Scott, Thomas, Box 72, Johnston, 50131	7/6/75
Shelton, Carol, 415 Fuller Avenue, Council Bluffs, 51501	11/5/75
Spencer, Richard, Rt. #2, Runnells, 50237	3/14/76
Thompson, Mary, 404 N. 5 <sup>th</sup> St., Indianola, 50125	4/20/75
Ver Ploeg, Darla, R#2, Sully, 50251	9/18/75
Walford, Clifford, 202 Hacker Street, Buffalo, 52728	3/14/76
Wurtzel, Mrs. Gladys, R #3, Cedar Falls, 50613	9/18/75
Yates, LeRoy, Ogden Hotel Apt. #7, Council Bluffs, 51501	1/24/76
Zentner, Dale, Box 11, LuVerne, 50560	11/5/75

## KANSAS

Crawford, John, 13551 S. Walnut View Dr., Olathe, 66061	4/17/75
Crawford, Mrs. John, 13551 S. Walnut View, D. Olathe 66061	4/17/75
Ernst, Robert, 301 E. First, Hoisington, 67544	1/18/76
* Evertson, Robert, 214 E. 27 <sup>th</sup> , Topeka, 66605	2/14/76
Johnson M/M Lester, 712 North St., Holstead, 67056	5/27/75
LeCluyse, James, 6567 Fox Ridge Dr., Mission, 66202	4/21/75

## KENTUCKY

Blunsch, Martin, 1309 Weyler Ave., Louisville, 40215	9/27/75
Burchfield, Donald, 1603 Belmont Dr., Murray, 42071	12/31/75
Estes, John Jr., 12601 St. Clair Dr., Middleton, 40243	9/18/75
Nall, Keith, R. #3, Box 356, Shepherdsville, 40165	1/24/76
Vessels, Ronald, 1428 Hobart Dr., Lousville, 40216	9/9/75

## LOUISIANA

Budd, Phyllis, 2085 Helen, Opelousas, 70570	10/4/75
Miramón, George Jr., 4130 Canal St., New Orleans 70100	1/20/76
Reeves, Allen, 1001 Ann St., Westlake, 70669	4/13/75
Riley, Philip, 7832 Mill St., New Orleans, 70126	9/18/75
Wingfield, Andrew, 2829 Behrman Hwy., New Orleans 70144	9/9/75

\* Denotes Judges. If your name is not listed, check last page.

## MEMBERSHIPS - 1975

## MAINE

Dolan, Richard Sr., Box 326, Farmington, 04938	12/31/75
McPherson, William, R. #1, Box #79, Mapleton, 04757	9/18/75

## MARYLAND

Duutsch Rabbitry, 225 Bloomsbury Ave., Harve DeGence, 21078	9/17/75
McNamara, Warren, R#2, Box #36, Reistertown, 21136	2/21/77
Thompson, Lawrence E., R#3, Box 228, Bethel Rd. Finksburg, 21048	5/8/75

## MASSACHUSETTS

Alleman, Bill, 622 Prospect St. E., Longmeadow 01028	9/9/75
Association Rabbit Industries, Box 14, Avon, 02322	12/30/75
Bean, Mark, 32 Park St., Saugus, 01906	2/26/76
Blanchette, Lucille, 89 Yankee Div. Hwy., Peabody, 01960	10/14/75
* Jurgelonis, Paul J., 4 Acworth St., Millbury, 01527	1/6/76
Kennedy, Kevin, 606 Liberty Square Rd., Boxborough 01719	12/11/75
McLeod, Richard, 390 Lebanon St., Melrose, 02176	9/18/75
Mahan, Don & Barbara, 4 Robinson Pl. Westboro, 01581	3/6/76
Perry, Mrs. Theresa, 84 Winter St., Marlboro, 01752	8/6/75
Rushford, Bruce, 94 Pine Grove Avenue, Hanson, 02341	9/18/75
Webber, Warren Sr., 115 Pine Grove Ave., Hanson 02341	12/11/75

## MICHIGAN

Angrove, Gary J., 6112 Livernois, Troy 48084	12/11/75
Bailey, Victoria, 20615 Dunham Rd., Mt. Clemmons, 48043	7/30/75
Conklin, Marian, 3152 Gاتفredson, Ypsilanti, 48197	3/1/76
Cooper, Lynn & FloAnn, R.#1, 2601 Sharon Hollow Road Grass Lake, 49240	Life
Doty, Rovelie, 618 Worden St., Kalamazoo, 49004	10/31/75
Dyer, Priscilla, 9460 N. Riverview Dr., Kalamazoo, 49004	5/8/75
Ellis, Angeline, 21224 Sherman, Southfield, 48075	10/15/75
Ery, Jane, 2214 W. M-50, Tecumseh, 48396	????
Hill, Steve, R#2, 134 Orchard Lane, Paw Paw, 49079	1/20/76
Mann, Larry & Karen, R#1, Box 397N, Union, 49130	9/9/75
Meyers, Ronald, 1925 Baldwin Dr., Jenison, 49428	9/18/75
Micallef, Anthony, 8172 Riverdale, Dearborn Heights, 48127	8/28/75
Milhahn, Myrl, 480 Green St., Constantine, 49042	10/30/75
Pratt, James, 6965 Whiteford Ctr., Rd., Lambertville, 48144	12/31/75
Regan, Kathleen, 321 Center, Highland 48031	5/11/75
* Roller, Mark, 3488 N. Sheridan Rd., Akron 48701	2/10/76
Sayles, Charles, 158 Braden Road, Perry, 48872	9/18/75
Slayer, Rink, 307 Howard Avenue, Holland, 49423	1/30/76

\* Denotes Judges. If your name is not listed check last page.

## MEMBERSHIPS - 1975

## MICHIGAN CONTINUED

Smith, William M. 10507 Wetherfield Drive Portage, 49081 2/8/76  
 Weinhardt, Jessie, 17970 Bethel Church Rd., Manchester, 48158 Life

## MINNESOTA

Ammerman, Tom, 14583 57<sup>th</sup> St., No. Stillwater, 55082 9/9/75  
 Anderson, Douglas B. 4506 Nawadaha Blvd. Minneapolis 55406 11/2/75  
 \* Bengston, Larry R. #1, Lewiston, 55952 10/13/75  
 Groothausen, Shannah, 5351 Irving Ave., N.  
 Brooklyn Center, 55430 12/11/75  
 Jacobson, A.E., 4845 33rd Ave., So. Minneapolis 55417 5/1/75  
 Kuzer, Helen, 12315 B. Co Rd 9, Plymouth 55441 2/9/76  
 \* Leibel, Doris, 3850 Beau d'Rue Dr., Eagan, 55122 3/18/76  
 Little Bit Ranch, R#4, Mora, 55051 9/12/75  
 Lunnings Rabbitry, R#4, Box #16, Albert Lea, 56007 4/25/75  
 Malikowski, Mary, 2139 131 st Ave., NW, Anoka 55303 3/16/76  
 Merickel, Ted, 777 Lincoln Ave., NE. St. Cloud, 56301 8/9/80  
 Messer, Linda Sue, R#2, South Haven, 55382 9/18/75  
 Mohr, Robert, Box 352, Rosemount, 55068 1/10/76  
 Powers, Joe Thomas, 1721 W. Burnsville Crosstown,  
 Burnsville, 55337 2/1/76  
 Streseman, Harry, Box 233A, Route #1, Oronoco, 55960 4/30/75  
 Unruh, Donald, 8050 Grafton Ave., Cottage Grove, 55016 11/3/75

## MISSISSIPPI

Alexander M/M C. E., R#3, Box 160, Picayune 39466 9/9/75  
 Mays, Mrs. Maire, R#10, Box 235, Gulfport, 39501 7/5/75  
 Sharp, Charles, 5017 Warrenton Road, Bicksburg, 39180 9/9/75  
 \*Wallace, Wally, R#1, Box 393, Moselle, 39459 12/5/75

## MISSOURI

Davis, John R. 3512 Garner, Kansas City, 64124 2/20/76  
 Gillispie, Gene, Star Rt. #1, Box 71, Vienna, 65582 5/8/75  
 Gilmore, Jack, 1023 N. Fulbright, Springfield, 65802 9/12/75  
 \* Green, Cecil, 1809 Beatie, St. Joseph, 64501 11/5/75  
 Hess, Russell, 13518. 12<sup>th</sup> St., Grandview, 64030 2/11/76  
 Munger, Mark A. 2314 S. Hardy, Independence 64052 4/20/75  
 Oliver, James, Springdale Lake Estates C026, Belton 64012 5/2/75  
 Smith, Virginia, 8312 Morrell, Kansas City, 64125 9/18/75  
 Walker, Franklin, R#1, Box #74, Salisbury, 65281 9/9/75

## MONTANA

Houseman, Ellis, R#2, Mullen Road, Missoula, 59801 9/17/75  
 Stevenson, Mrs. Vicki, 2226 4<sup>th</sup> Ave., Sw., Great Falls 59404 12/11/75  
 \* Denotes Judges If your name is not listed check last page

## MEMBERSHIPS - 1975

## NEBRASKA

Brown, Mrs. Doris, 901 So. Elm, Rt. #1, Hastings, 68901	12/28/75
Everett, Ruth, 4255 W. Capital Ave., Grand Island, 68801	5/3/75
Pool, Steve, 4197 W. Capital Ave., Grand Island, 68801	1/1/76
Rubensky, Lori, 4214 S. 39 <sup>th</sup> Ave., Omaha, 68134	12/30/75
Taylor, Sharon, 11902 McKinley, Omaha, 68134	2/3/76
Zuchniak, Mr. Joseph P. 4119 So. 39 <sup>th</sup> St., Omaha 68107	1/27/76

## NEW JERSEY

Geitzenauer, Wm. A., 106 Harding Dr., Washington, 07882	4/8/78
Pluta, Diane, Hollow Road, Skillman 08558	1/14/76
Savage, Bill, Box #222, Pottersville, 07979	9/9/75
Sutter, Craig, 2652 Deer Path, Scotch Plains, 07076	11/13/75
Rippel, Anthony & Franklin, 107 Hillside Avenue Berkeley Heights, 07922	8/15/75

## NEW MEXICO

D'Andrea, Jon, 1001 Western Meadows Ct., NW. Albuquerque, 87114	1/22/76
Hauert, Scott, 1029 San Lorenzo NW., Albuquerque, 87107	12/20/75
Norris, John Star Rt. C. Box 399, Hobbs, 88240	9/18/75
Morris, Jean, 1102 Forest Rd. NW., Albuquerque, 87110	2/27/76

## NEW YORK

Behrens, Mel, Box 148, 248 N. Highland Ave., Pearl River 10965	12/20/75
Blass, Bruce, R#1, Trumansburg, 14886	1/15/76
Brose, Janet, 2973 Upper Mt. Rd., Sanborn 14132	4/4/75
Cooper, Richard, Box 456, Breesport, 14816	9/25/75
DiPasquale, Steven, 81 Hillvale Rd., Albertson, LI, 11507	1/7/76
Fleming, Victoria, 417 Pinnacle Rd., Rochester, 14623	8/1/75
French, Howard, 512 W. Green St., Ithaca, 14850	3/11/76
Garda, James, 63 Mountain Ave., Bayville, 11709	12/24/75
Giordano, Anthony, 4415 5 <sup>th</sup> Ave-Store, Brooklyn, 11220	2/27/76
Glosky, Elizabeth, 4530 McDonald Rd., Syracuse, 13216	9/15/75
Hanlon, Robert, R#4, Red School House Rd., Fulton, 13069	12/31/75
Herrington, Robert, 9742 Bethany Center Rd. Bethany 14054	1/27/76
Hoellerich, Donald, Maiden Bridge, 12115	1/13/76
Hyatt, Kay, Oatman Rd., Box 5244, Vernon, 13476	12/31/75
Klaben, Janis, 4530 McDonald Rd. W., Syracuse, 13215	9/16/75
Lake, Mrs. Gary, R1, Rt 211, Middletown, 10940	11/24/75
Lallier, Richard, 5061 Spring Road, Verona, 13478	4/21/75
Lesson, David, Spier Falls Road, Corinth, 12822	12/11/75
Lewis, Chas. O. 247 Willow St., Roslyn Heights, 11577	Life
Meisner, Richard Jr. 3938 Pearl St. Rd., Batavia, 14020	9/18/75

\* Denotes Judges      If your name is not listed, check last page.

## MEMBERSHIPS - 1975

## NEW YORK CONTINUED

Mellozzo, John, Hall St., Central Nyack, 10960	2/10/76
Petell, Carol, R#1, Box 30, Theresa, 13691	1/25/76
Smith, Don, Box 15 Waterloo, 13165	1/26/76
Stedman, Wm. C. 2853 S. Main Street, Newfane 14108	8/6/75
Storrer, Kenneth & Molly, Brooklyn St., Eaton, 13334	9/11/75
VanAmburg, Richard, R#2, Prattsburg, 14873	4/21/75
Watson, Quentin, R#2, Copenhagen, 13626	7/27/75
Wearstler, Jackie 15 Maplewood Ave., Albany 12205	1/10/76
Weber, Mary, R#2, Canton, 13617	9/18/75
Woram, Wm., 192 Green Ave., Freeport, 11520	12/31/75

## NORTH CAROLINA

Daniels, Jim, R #2, Clemmons, 27012	9/17/75
Dean, John, 230 Cascade Dr., High Point, 27260	9/18/75
Fero, Robert, Box #84, Cleveland 27013	4/21/75
Hill, R.L., 204 Henderlite St., Salisbury, 28144	4/21/75
Smith, Walter, R#2, Box #415, Randleman, 27317	2/10/76
Wilson, James, Box 437, R#1, Stanley, 28164	4/23/75

## NORTH DAKOTA

Kauffmann, Jon, R#4, Minot, 58701	9/18/75
Pa & Ma Rabbitry, Rock Lake, 58365	10/31/75

## OKLAHOMA

Jones, Dale & Beverly, Box 436, Long Grove, 73443	12/31/75
Keller, Pat, 219 N. Macomb, El Reno, 73036	6/5/75
King, Howard, Box 1321, Bartlesville, 74003	4/11/76
Patty, Tim, 3204 NW 34 <sup>th</sup> St., Oklahoma City, 73112	7/15/75
Reeves, Mary Jane, Box 546, Healdton, 73438	12/11/75

## OHIO

Barnhart, John, R#2, Box 2177, Bucyrus, 44820	10/2/75
Barton, Andrew, Box 295, Jackson, 45640	1/30/76
Baxter, Harold, 6473 Ham-Mason, Hamilton 45011	2/3/76
Bonner, Barbara, 5935 Olentangy River Rd., Worthington 43085	9/18/75
Bordenkircher, Todd, 703 W. Chestnut St., Coshocton. 34812	12/31/75
* Burke, M/M G.A., 6400 Scioto Darbey Rd., Hilliard, 43026	4/4/75
Butler, M/M Alvin, 4310 Richville Dr. SW, Canton 44706	11/14/75
Burkholder, DR 5550 W. National Rd., Lot #14, Springfield, 45504	9/9/75
* Carr, Glen, 54 E. Beaumont Rd., Columbus, 43214	10/5/75

\* Denotes Judges If your name is not listed, check last page.

## MEMBERSHIPS - 1975

## OHIO CONTINUED

Chandler, Ed & Janet, 1220 14 <sup>th</sup> St., NW, Canton, 44703	1/30/76
Emery, Al & Esther, 10383 Oberlin Rd., Elyria, 44035	10/31/75
Firment, Judy, 432 W. 11 <sup>th</sup> St., Elyria, 44035	5/14/75
Fox, Roy V., R#6, Box 194B, Wapakoneta, 45895	5/1/75
Girardot, Francis, R#2, Box 514, Minister, 45865	8/9/75
Gunsett, Sharon, 1065 Rosemount Dr., Van Wert, 45891	9/9/75
Hand, Elmer & Mildred, 1144 E. Walnut St., Lancaster, 43130	6/12/75
* Holcomb, Dennis, 9691 N. Co Rt.25A, Piqua, 45356	1/1/76
Hoskinson, Rick, Box 342, Gratiot, 43740	3/14/76
House, Bill, R#5, Washington, 43160	1/13/76
Lange, William, 1954 Hollis St., Akron 44305	2/12/76
Ladyga, Michael, 26 Wildwood Rd., St Clairsville, 43950	12/31/75
McKeen, Jesse, 11252 W. 130 <sup>th</sup> St., Strongsville, 44136	12/7/75
Morgan, M/M Glenn, 7565 Dawson Dr. SE., Warren, 44484	4/14/75
Nixon, Larry, R#1, Pitts Rd, Box 298A, Wellington 44090	9/26/75
Ohio State Dutch Club c/o Mildred Hand	1/29/76
Owens, M/M Robert, 5607 Haverhill Drive, Parma 44129	4/21/75
Parker, James, 185 Canton Road, Akron 44312	9/9/75
Perkins, Donald, 1615 Garrison St., Fremont 43420	1/27/76
Purtee, Michael, 4547 Paxton Drive S. Hilliard, 43026	1/1/76
Quinn, Rose Ann, 131 Bordner Ave., SW, Canton 44710	10/31/75
Rutherford, John 816 Ohio Street, Elmore 43416	4/21/76
St. John, Robert, Box 85A, Park Colony, Curtis 1, 43412	9/9/75
Selvage, David, R#2, Box112A, Sciotoville, 45662	9/18/75
Solzman, Barbara, Box #1, Branch Hill, 45108	12/11/75
Stillings, Howard, 528 Park Ave., Galion 44833	2/6/76
Stinehelfer, Myron, 426 Union Avenue, Bucyrus, 44820	10/11/75
Troyer, Clyde, 219 Kiracofe, Elida, 45807	1/2/76
Walz, Robert, R#1, Edon 43518	12/20/75
Whitehall, Don, 426 W. Elm Street, Bluffton 45817	4/9/75
Wickert, Robert 2375 McGormley Road, Fremont 43420	3/1/76
Williamson, Richard, R#2, Bloomingdale 43910	1/9/76
Wireman, Jack R#4, Box 127, Navarre, 44662	3/14/76

## OREGON

Biles, Steve 13980 SW Sherwood-Tulatin Rd., Sherwood 97140	12/20/75
Bossert, Debby, 3805 SE 18 Place, Portland 97236	9/18/75
Burton, JoAnn, 1075 NW Saltzman Rd., Portland 97229	12/2/75
Crivellone, Kurt, 11131 NE Sikiou, Portland, 97220	9/9/75
Denin, Susan R#1, Box 169, Molalla, 97038	2/5/76
Forster, Kathy, 29200 S. Needy Road, Canby, 97013	9/18/75
Gordon, Tami, Box 506, Roseburg, 97470	3/3/76
* Lowit, J.C., R#2, Box 160, Troutdale, 97060	10/17/75
Parmer, George & Maxine, 9990 SW Marjorie Ln., Beaverton 97005	2/11/76

\* Denotes Judges If your name is not listed, check last page.



## MEMBERSHIPS - 1975

## PENNSYLVANIA

Bartolo, Anthony, 758 So. 10 <sup>th</sup> St., Philadelphia 19147	9/18/75
* Blyth, James, Box 379, Claysville, 15323	Life
Decker, Carl Jr. 935 Clay Ave., Stroudsburg, 18360	5/8/75
Delaney, Alan, 1322 Mary Jane Ln., W, Chester, 19380	9/17/75
Edwards, Bonnie, 128 Lacoee St., W., Pittsburgh, 18643	9/18/75
Gannon, Boyd, R#2, Effort 18330	6/30/75
Gerhart, Fred, 309 Sycamore St., Altoona 16602	1/8/76
* Kennedy W.H., 222 Soose Road, Pittsburgh, 15219	Life
Lamb, Matthew, 1114 McElheny Road, Pittsburgh, 15209	3/13/76
Luciano, Theodore, R#1, Box 462, Altoona, 16602	12/11/75
Olosky, Kathleen, R#1, Box 82, Olanta, 16863	2/15/76
Pedrazzani, Thomas M. Box 84, Osceola, Mills, 16666	2/15/76
Radeline, William, R#1, Allentown, 18102	7/10/75
Ranek, Dixie, R.#1, New Columbia 17856	12/5/75
Sarvey, Paul, 1505 Dutch Ridge Road, Beaver, 15009	12/5/75
Schill, George & Jean, 3923 New Texas Road, Pittsburgh, 15239	(6/5/75)
Schmidgall, Loretta, R#1, Box 351A, Thomasville, 17364	1/27/76

## PUERTO RICO

Ortiz, Victor, Granja De Conejos, Vic-Nat. Box Pugnado C. Branch Manati, Puerto Rico 00701	12/11/75
Cammani, M. Perez, Box 214, Arecibo, 00612	3/14/76

## SOUTH CAROLINA

Brown, Layne, R#1, Roebuck 29376	7/28/75
McKenzie, Dr. & Mrs. Thomas, Dept of Chem. U of SC Columbia, 29201	12/30/75
Meier, Al Jr., R#1, Box 136A, Cowpens, 29330	11/9/75
Sanders, James, R#7, Box 433, Anderson, 29621	1/25/76

## SOUTH DAKOTA

Midkiff, Jeannine, Caputa, South Dakota 57725	12/11/75
---	----------

## TENNESSEE

Circle G Ranch, 3721 Oakland Dr., Knoxville 37918	9/17/75
Green, Prior, 3721 Oakland Dr. Knoxville 37918	4/5/75
Griffith, M/M Wm., 5868 $\frac{1}{2}$ Grubb Rd., Hixton, 37343	10/4/75
Moore, James, R#6, Sparta, 38583	2/14/76
Tyner, Harold, R#3, Box 212, Bolivar, 38008	2/1/76
Watters, Mickey, 1206 Guille St., Athens, 37303	1/9/76
White, Priscilla, R#3, Sam Lee Road, Concord, 37720	1/26/76

\* Denotes Judges If your name is not listed check last page.

## MEMBERSHIPS - 1975

## TEXAS

Antwine, M/M Ed., 5204 Flamingo Rd., Fort Worth, 76119	1/10/76
Armes, M/M John, Box 247, New Home, 79383	4/21/78
* Berry Robert W., 513 Kent Rd., Lubbock 79403	8/13/75
Brady, Don & Nelle, 1461 Brittmore, Houston 77024	4/21/75
Cress, Lisa, 4407 Frontier Dr., Houston 77041	9/17/75
Dorsey, Martha, 548 Cascade, Bellaire 77401	12/20/75
Duderstadt, Rodney, Box 506 Menard, 76859	9/9/75
Geaslin, G.H., Box 1173, Fort Stockton 79735	12/31/75
Greene, G.W., 3614 Trailwood, Houston 77023	9/9/76
Hyer, Lawrence, 2510 39 <sup>th</sup> St., Lubbock 79414	9/18/75
James, Bill Box 75, Winfield 75493	9/2/75
Latimer, H.H., R#3, Box 487A, Fort Worth 76134	9/20/75
Lett, Linda, R#1, Box 112F, Kingland, 78639	12/30/75
Lorenz, Janet, 113 Davis, Yoakum, 77995	9/18/75
Lowman, James, Box 1426, Dallas, 75221	9/18/76
McCracken, Kenneth, R#1, Box 106, Cypress 77429	1/23/76
Miller, Frank, R#2, Box #93, Killeen 76541	12/31/75
Patschke's Rabbitry 11711 Campos Dr., Houston 77065	2/7/76
Pavlik, Erwin, Box 486, Snyder 79549	9/17/75
Radler, Valerie, 15006 South Dr., Channelview 77530	4/21/75
Scott, Robert, 1509 So. Ave., M. LaMesa 79331	10/2/75
Smith, Kenneth, Box 53, Hurlwood, 75328	9/18/75
Smith, Paul E. 7610 Bridle Path, Houston 77044	5/26/75
Spence, H.M., 509 Saunders St., Gatesville 76528	9/9/75
Story, Micki, 5310 Garfield, Groves 77619	9/9/75
Western Sky Rabbitry, Box 506, Menard, 76859	1/27/76

## VERMONT

Vaile, Wendall, Route #1, Chester, Vermont 05143	6/5/75
--	--------

## VIRGINIA

Danner, Melvin, 362 Menchville Rd., Newport News, 23602	3/5/76
Futrell, Elton Jr. 304 Begonia St., Suffolk, 23434	9/9/75
Hall, Garry & Shirley 3525 Collins Blvd., Chesapeake 23321	12/11/75
Hampton, Darrell, Box 962, Wise, 24293	12/31/75
Heath, Lewis, R#1, Box 207, Mechanicsville 23111	1/25/76
Horn, Valerie, Box 651, Montross 22520	4/6/75
Kemper, Carlton, R#1, Box #9, Farnham, 22460	8/24/75
Meacham, James, 2414 Ellison Avenue, Salem 24153	1/31/76
Sanders, Mary, R#3, Warsaw, 22572	5/2/75

## WASHINGTON

Barber, Norris & Betty, N. 11605 Kathy Dr., Spokane 99218	8/25/75
Brulotte, Ted, 1406 Jefferson Ave., Yakima 98902	9/9/75
Chinn, Charles, 6012 28 <sup>th</sup> Ave. So. Seattle, 98108	9/10/75

\* Denotes Judges If your name is not listed check last page.

## MEMBERSHIPS - 1975

## WASHINGTON CONTINUED

Cook, Dick 3608 South L. Tacoma 98408	8/20/75
Ferguson, Arnold, 3613 Grandview Dr. W., Tacoma 98466	12/5/75
Fleishman, Ritz, Box 567, Tacoma 98401	9/9/75
Greene, Sylvia R#1, Box 376 Onalaska 98570	12/31/75
Kelley, Jim 1025, #1, 27 <sup>th</sup> , Kennewick 99336	10/20/75
McDaniel, Della, 4132 Jewell Road Bothell, 98011	12/11/75

## WEST VIRGINIA

Liggett, C.C. 104 Smith Street, Weirton, 26062	10/24/75
M & F Rabbitry, Crown Hill, 25052	4/21/75

## WISCONSIN

Cook's Rabbitry 4910 S. 43rd St., Greenfield, 53220	9/2/75
Cyганиak, Jacquiline, 10047 S. Chicago Rd., Oak Creek, 53154 (12/31/75)	
Darken, Bruce, 665 Hazel Street, Oshgosh, 54901	1/9/76
Davis, Mrs. R.L., Whitelaw, 54247	5/22/75
Dibb, Jack, 3564 So. 47 <sup>th</sup> Street, Greenfield, 53220	9/19/75
Guetschow, Dean 6004 Schroeder Road, Madison 53711	3/30/76
Guetschow, Elmer, 6004 Schroeder Road Madison 53711	3/30/76
Guetschow, Roger, R#1, Arlington, 53911	8/15/75
Kauffman, Wallace, R#1, Exeland 54835	9/9/75
Lesser, Craig, 19290 W Inez Dr., New Berlin 53151	11/1/75
Olson, Debbie, #1, Luck, 54833	9/18/75
Palan Rabbitry, Bangor 54614 (1008 Cardinal Street)	9/9/75
Riglemon, Claude, Box 102, Warrens, 54666	9/18/75
Stotmeister, Edward, 3414 Ross Ave., Scofield, 54476	9/27/75
Thienes, Roy, 2127 Vine Street, LaCrosse 54601	1/27/76
Vancil, Bruce Roy, Rt. #2, Box #40, Sparta 54656	2/26/76

## WYOMING

McNinch, Keith, McNinch Ranch, Big Piney, 83113	5/22/75
---	---------

## ILLINOIS

Circle J Rabbitry(Jones), 500 McKinley, Bartonville 61607	2/11/76
Williams, George & Elaine, 1501 West St., Streator, 61364	3/23/76

## MASSACHUSETTS

Cochrane, Kelly, 49 Webber St., Springfield, 01108	7/6/75
Matzko, John, 46 Middlebrook Dr., Springfield, 01129	9/12/75

## MINNESOTA

Billstrom, Kathy, RFD #4, Mora, 55051	7/18/75
---------------------------------------	---------

M E R I C K E L ' S M I R A C L E S  
 W O R L D F A M O U S D U T C H E N G S T R A I N

BLACK DUTCH  
 BLUE DUTCH

TED MERICKEL, 777 Lincoln Avenue N.E., St. Cloud, Minnesota 56301

PHONE: 612-252-2150  
 612-252-5231 12/75

\* \* \* \* \*

EICH'S RABBITRY	*	GALEN EARL	*	COMPLIMENTS
	*		*	of
BLACK-BLUE-CHOCOLATE	*	BREEDER OF	*	
	*		*	CLYDE & DORIS JONES
USUALLY A FEW TOP	*	D U T C H	*	
QUALITY D U T C H	*	*BLACK-BLUE-CHOCOLATE	*	6205 GUILFORD
FOR	*	NEW ZEALANDS	*	
SALE	*	WHITE-RED-BLACK	*	FORT WORTH
	*		*	TEXAS 76119
WRITE: BOX #361	*	*WILL SHIP AIR-FREIGHT	*	
DALLAS CENTER, IOWA	*	*PHONE: 402-873-7042	*	YOU CAN'T BEAT THE
50063	*	* 1220 So. 4th Street	*	D U T C H
	*	* NEBRASKA CITY	*	
PHONE: 515-992-3466	*	* NEBRASKA 68410	*	
12/75	*	12/75	*	12/75

\* \* \* \* \*

	12/75	*	12/75
A.R.B.A. JUDGE and REGISTRAR	*	"CHARLIE"	
	*		
DORIS LEIBEL	*	A.R.B.A. JUDGE & REGISTRAR	
	*		
3850 Beau d' Rue Drive, Eagan, Minn.55122	*	RABBITS - - CAVIES	
PHONE: 612-454-2930	*	License #261	
	*	CHARLES H. HAAF Jr.	
D U T C H - BLACK-BLUE-TORTOISE-CHOCOLATE	*	R.D. #3, BOX #338	
N E W Z E A L A N D S (Whites Only)	*	*WELLINGTON, OHIO 44090	
FRENCH LOPS - Agouti and Broken Color*	*		
	*	PHONE: 216-647-2804	

\* \* \* \* \*

F A M O U S D U T C H E N G S T R A I N  
 B L A C K S B L U E S T O R T O I S E

All Winners Home Bred, Starting with 1934 N.D.S. show at Detroit, B.S. Black, B.O.S. Best Blue, New Haven Ct. 1935. Still Winning B.O.S. 1972 N.D.S. B.O.B. and B.O.S., Best Blue, Best Black were all Dutcheng Bloodlines. Bred for Type and Color, not an Outcross for 39 Years.

J U D G E  
 TOM SHUFFLEBOTHAM  
 BOX #257, VALPARAISO, INDIANA 60383

OFFICERS: 1975

President - Mike Stinehelfer, 426 Union Ave., Bucyrus, Ohio 44820
Vice-President - Roger Guetschow, Rt.#1, Arlington, Wisc. 53911
Sec'y.-Treas. - Larry Bengston, Route #1, Lewiston, Minnesota 55952
Publicity Directors - Elmer & Millie Hand, 1144 E. Walnut Street
Lancaster, Ohio 43130

Board of Directors:

Don Lovejoy - 1033 N. Dudley St., Pomona, California 91768
Tom Shufflebotham - Box #257, Valparaiso, Indiana 46383
Lynn Cooper - 2601 Sharon Hollow Rd., Grass Lake, Michigan 49240
Roger Eich - Box #361, Dallas Center, Iowa 50063
Don Reid - Rte. #1, Box #216, Lockport, Illinois 60441
Bill Geitzenauer - 106 Harding Dr., Washington, New Jersey 07882

\*\*\*\*\*

PUBLICITY ITEMS - For these Items write to Elmer & Millie Hand
1144 E. Walnut Street, Lancaster, Ohio 43130

- Pedigree Books, (50 per book with stub)(1st Class Mail) . . \$2.75
Pedigree Books, (50 per book with stub)(3rd Class Mail) . . 2.25
Dutch Stamps for use on your Stationery . . . . . .01
Shoulder Patches, Black only. . . . . . 1.25
Beautiful Dutch Decals, 50¢ each, Three for . . . . . 1.00
String Tie, with emblem, "You Can't Beat the Dutch" . . . . 1.00
Leathercraft Items: Coin Purse, Black Dutch . . . . . 2.25
Key Fob - Split Ring, Black Dutch . . . . . 1.75

\*\*\*\*\*

DUTCH REPORTER ADVERTISING RATES: FULL PAGE, one issue - \$20.00
ONE HALF PAGE, one issue - \$10.00 ONE QUARTER PAGE, 1 Issue - \$6.00
BREEDER CARD, one year - \$6.00 DOUBLE BREEDER CARD, 1 yr. - \$10.00
TRIPLE BREEDER CARD, one year - \$16.00

\*\*\*\*\*

MEMBERSHIP APPLICATION BLANK - - - AMERICAN DUTCH RABBIT CLUB

Larry Bengston, Secretary, Route #1
Lewiston, Minnesota 55952

Date \_\_\_\_\_ 1975

I hereby make application for membership in the American Dutch R. C.
and enclose \$5.00 as dues & fees for 1 year. I agree, if accepted to
abide by the Constitution and By-laws of this organization & to
further the interest of the American Dutch R.C. in every way possible.
COMBINATION - Husband & Wife membership at \$7.00

NAME, APPLICANT, PRINT \_\_\_\_\_

NAME, RABBITRY \_\_\_\_\_

STREET ADDRESS \_\_\_\_\_

CITY, STATE, ZIP CODE \_\_\_\_\_

PHONE \_\_\_\_\_ REC. BY \_\_\_\_\_

RENEWAL \_\_\_\_\_ NEW \_\_\_\_\_

NOTE: Our club is affilliated with the A. R. B. A., Inc. and by
sending \$11.75 instead of the \$5.00 you will become a member of
both Associations. "YOU CAN'T BEAT THE DUTCH"

THE DUTCH REPORTER  
AMERICAN DUTCH RABBIT CLUB  
BOB & KATHY KAHLER-CO-EDITORS  
BOX #11  
CUSTER PARK, ILLINOIS 60418

---

NON-PROFIT ORGANIZATION  
U. S. POSTAGE PAID  
CUSTER PARK, ILL. 60418  
PERMIT #1

---

Jack Wireman

RFD #4, Box #127

Navarre, Ohio 44662

3/14/76

DEVOTED TO THE INTEREST OF THE BREEDERS OF DUTCH  
AMERICA'S FINEST RABBIT