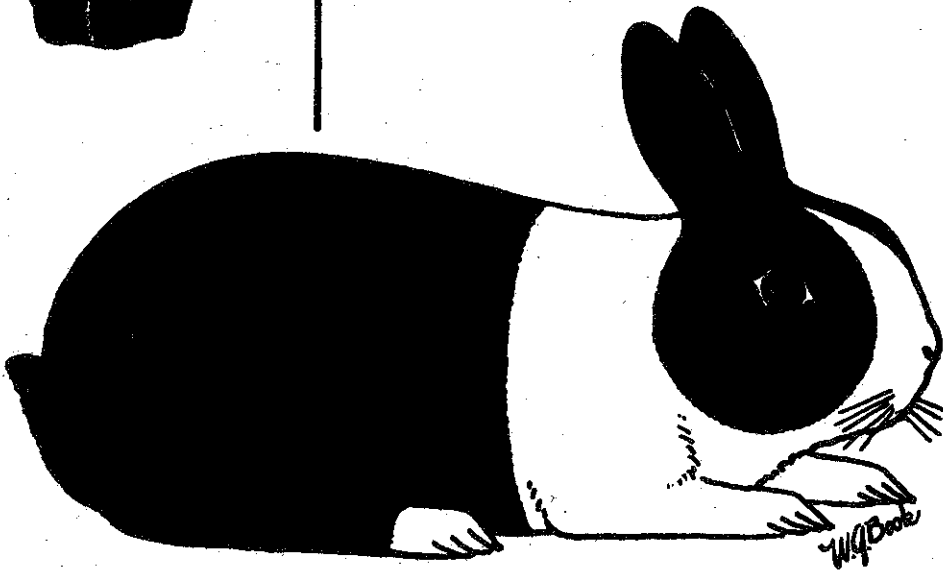




The Dutch Reporter



DEVOTED TO THE INTERESTS OF THE
BREEDERS OF DUTCH,

America's Finest Rabbit



American Dutch Rabbit Club

87 Sept-Oct - 86

SAW RABBITRY

Scott, Dianne and Kate
Williamson
6588 E. Ashlan
Clovis, CA 93612
Phone: (209) 294-7394

QUALITY DUTCH

FORMULA FOR CHAMPIONS

Black Chocolate
Blue Tortoise

SPRING HILL RABBITRY

Ron, Rick, Rock Billups
93 Oney Ave.
Huntington, WV 25705

BLACK, BLUE, & TORT

BOB - 1983 ARBA Convention
BOS - 1985 NDS

Also, AKC Springer Spaniels

LIFE MEMBER

"You Can't Beat the Dutch"

The Lord Nelson Strain

JOHN L. NELSON

R.R. 3 - Box 1114
Crete, IL 60417

B.O.B. 1978 N.D.S., OHIO

BEST FUR

78 N.D.S.

80 N.D.S.

81 N.D.S.

Since 1941

HAVE FUN - RAISE DUTCH

MYRL & MAXINE MILHAHN
CRAIG NELSON (Our Grandson)
480 Green Street
Constantine, MI 49042
Phone 616-435-3772



Black **DUTCH** Blue
Chocolate Tortoise

THE TOMMY D STRAIN

DUTCH OF THE 1980's

BOB - 1980 NDS
BOB - 1980 ARBA Convention
BOB - 1982 ARBA Convention
BOS - 1982 ARBA Convention
BOB - 1984 ARBA Convention

Tom Dietrich

3462 Royal Drive
Columbiaville, Mich 48421
Phone: 313-793-7109

TRACY BUSSEMA

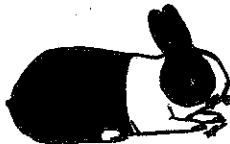
5114 Beech Street
Kalamazoo, MI 49007
Phone (616) 349-1979



BLUE, BLACK, & STEEL
DUTCH

Greetings From

LOWELL & WILBA DEAN JONES



5053 Logan Rd. N.W.
Cleveland, TN 37311
Phone 615-476-8697

Quality Tortoise
Dutch
No Shipping Please

DAFFY-DILLS RABBITRY



OUR SPECIALTY - BLUES
(Occasionally Blacks)

VERN & MARTI DILL

11825 East L Ave.
Galesburg, MI 49053
Phone (616) 665-4286



Compliments of

Larry & Doreen Bengtson
Route 1, Box 95
Lewiston, MN 55952



Ear #C1 Reg 6890K GC #S983
1st Jr Bk 1977 N.D.S.
BOB 1977 ARBA Conv.
BOS 1978 N.D.S. Ohio
ARBA JUDGE

EICH'S RABBITRY

Top Quality Dutch

FOR SALE

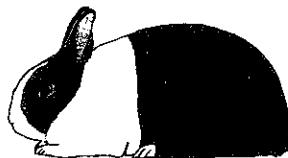
National Winners Over 30 Yrs.
Black - Blue - Chocolate - Tortoise

Roger and Bonnie Eich
Box 502 Dallas Center, IA 50063
Phone 515-992-3466
WE WILL SHIP

LITTLE CITY FARM

DUTCH

"Bred for Type"



Laurie Lettice
161 N. Milton Ave.
Campbell, CA 95008
Phone (408) 866-6620

EVENBURG & STEARNS

DUTCH

2188 S. - 350 E.
LaPorte, IN 46350



Black Tortoise
Blue Chocolate
(219) 369-1034

PRESIDENT

Scott A. Williamson '85
6588 E. Ashlan
Clovis, CA 93612

VICE-PRESIDENT

Jack Wireman '86
5475 Seeman St., S.W.
Navarre, OH 44662

SECRETARY-TREASURER

Norma Hart
190 First Ave.
Coal City, IL 60416

SWEEPSTAKES CHAIRPERSON

Vicki J. Hertel
Route #, Box 536
Cornelius, OR 97113

DUTCH REPORTER EDITOR

Dianne Williamson
6588 E. Ashlan
Clovis, CA 93612

DIRECTORS

Rick Billups '87
93 Oney Ave.
Huntington, WV 25705

Wenton Carlton '86
14150 N. Como Dr.
Tucson, AZ 85741

Tom Dietrich '87
3462 Royal Dr.
Columbiaville, MI 48421

Roger Eich '86
Box 502
Dallas Center, IA 50063

William Geitzenauer '87
68 W. Valley Brook Rd.
Long Valley, NJ 07853

Wilbur Williamson '86
P.O. Box 515
LaPorte, IN 46350

ADVERTISING RATES



Single Issue Page:	\$20.00
Single Issue Half Page:	\$10.00
Single Issue Fourth Page:	\$6.00
Yearly Breeder Card, One Size:	\$6.00
Yearly Full Page:	\$40.00
Yearly Half Page:	\$20.00
Yearly Third Page:	\$15.00
Yearly Quarter Page:	\$12.00
Judges & Registrars Listing:	\$4.00/yr.
Booster Listing:	\$3.00/yr
Dutch "FOR SALE" ad; One Issue Booster size listing:	\$3.00

THE DUTCH REPORTER IS PUBLISHED SIX (6) TIMES YEARLY: FEBRUARY, APRIL, JUNE, AUGUST, OCTOBER AND DECEMBER. MATERIAL FOR PUBLICATION AND ADS MUST REACH THE EDITOR BY THE TENTH (10th) OF THE MONTH PRECEDING PUBLICATION OR IT WILL NOT BE PRINTED IN THAT ISSUE.

PRESIDENT'S MESSAGE

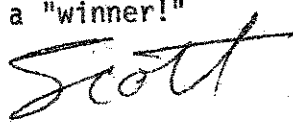
First, I would like to thank everyone who took the time and responsibility to vote in our recent election. Members make a club work and participating in club activities help an organization grow. Congratulations and welcome aboard to the winners in the election. I am sure you will find your tenure as an officer in the American Dutch Rabbit Club challenging and rewarding. I am looking forward to visiting with each of you in Columbus.

From the reports I have heard, the A.R.B.A. Convention in Columbus, Ohio promises to be the largest and best in the history of the A.R.B.A. Over 10,000 animals have been entered and I'm looking forward to judging a large entry of Dutch (500+)? Al Butler and I will be doing the honors and I do mean the honors since judging Dutch is something I really enjoy. Jack Wireman and the Ohio Dutch Breeders will be coordinating the Dutch portion of the A.R.B.A. Convention. They have also solicited rabbits for the A.R.B.A. Raffle. I am sure Tom Dietrich and his crew will put together an excellent Seller's Class. There will be plenty of opportunity to purchase quality breeding stock to improve your herd. So, even if you are not showing, plan to attend. This convention will be very memorable!

Breed your Dutch! The 1986 National Dutch Show is just 6 months away and Texas promises to have the welcome mat rolled out for all Dutch exhibitors. Now is the time to have those senior does bred to produce that potential NDS winner! More news from Texas will be available at the 1986 A.R.B.A. Convention.

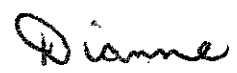
Dutch here on the West coast are becoming more and more popular. I have had numerous inquiries about breeding and show stock. There is even some movement to form a Great Western Dutch Rabbit Club in hopes to sponsor a National Dutch Show and further promote Dutch west of the Rockies.

In closing, I wish you all "Good Luck" at the Columbus Convention. Everyone raising Dutch is a "winner!"

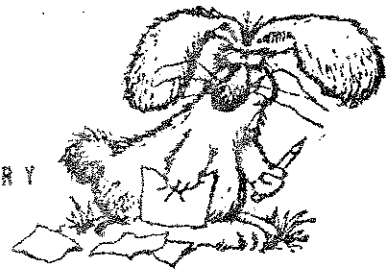


Notes from the DR Editor Dianne Williamson

I must apologize for the lateness of this issue of the Dutch Reporter. My father passed away in September and I needed to be with my family in Indiana. Please continue to send me articles for the Dutch Reporter. The officers will choose a new editor at the A.R.B.A. Convention, but I will still publish the November-December issue for this year. If you attended the convention this year, why not write an article and share your experience with the Dutch Club members. Remember the Dutch Reporter is only as good as you make it! Hope you are raising some winners!



FROM THE DESK OF THE SECRETARY



I hope that the cool weather is as refreshing to most of you as it appears to be to the bunnies. Our rabbitry is bustling with energetic Dutch. It was only a few weeks ago that there was very little movement in the rabbit barn, - - and that was only to get a fresh, cool drink of water to keep from complete collapse! I'm a "cool" weather person myself and find that I look forward to fall (and yes, -- even winter) more and more each year! I don't look forward to snow shoveling and find it more convenient to leave the snow exactly where it came down. It's also easier to walk in the snow rather than on the icy space that's left when it's removed. You see, I was born a bit clumsy. The more graceful I try to be, the worse I am!! In any case, even though it's just September, I'm sure that the months have gone by in your area just as quickly as they have here. If you have any repair work to do on the rabbitry, now's the time to get to it. When the snow does fly, you'll be prepared.

Probably by the time you get this issue of the Dutch Reporter, many of you will be in the process of leaving for the 1986 ARBA Convention in Columbus, Ohio. I'm certainly looking forward to it and hope that I'll see many of you there. I knew that work, finances, and untimely, unplanned events don't always permit our attendance, but I hope that if you're unable to attend personally, you'll make arrangements to send that special one out! Remember, it's not necessary to have the "Best of Breed" to come on out and have a good time! You'll run into a great bunch of people, renew old friendships and certainly make lots of new ones!!

I would like to take this opportunity to apologize to the youth! Your final election ballot was to appear on a separate sheet in the July/August issue of the D.R. I stated this in my "Secretary Message" at that time. However, due to an oversight during publication, it was included on a section of the open ballot. I hope that this did not cause confusion and apologize to the youth members for any inconvenience.

Please note your ADRC expiration date. You will find it on "each" Dutch Reporter and is included on your membership card. Your Dutch Reporter label carries both your expiration date and "First Class" mailing expiration if you pay additional for this service. I often receive memberships that are checked "renewal"; -- after checking the files I find that the membership has been expired in excess of sixty days. If you wish your membership backdated to show no lapse, you must request this with your renewal. Also note that if your membership has lapsed for sixty (60) days, all points accumulated prior to that time have been forfeited.

Another item that needs some discussion is show sanctions. This office receives many requests for ADRC sanction(s) that must be returned. EVERY sanction that leaves this office is accompanied by the sanction form itself, an information sheet that contains the rules for sanctioning, where to send the completed form, a sanction request form and membership application. EVERY sanction is also sent with a complete set of ribbons. A request form is included with the sanction issued as a convenience in requesting future sanctions. It is NOT NECESSARY to have this form to request a sanction but you MUST include all of the necessary information in order to process. It is an ARBA rule that no specialty club shall issue a sanction to any show sponsor unless the request is accompanied by a "valid" ARBA show sanction number. I receive many that state "we'll send our number when we receive it", "we'll fill it in on the report form when we return it", "we just applied for it", or.....they submit their charter number. These requests are returned with a note. This office WILL NOT issue a Dutch sanction to any club unless the ARBA number is valid and it is included in the request. A few weeks ago, I received a check from a fair in the amount of \$13.00. They were requesting an open and youth sanction. However, only one ARBA number was included with the request and it was their charter number. I returned the request with a note stating that I needed both their open and youth valid ARBA numbers and that they had submitted their charter number by mistake. About two weeks later it was returned to me. The envelope contained the same check and the original sanction request,....no note,....no nothing. It was again returned! You guessed it!.....I got it back the same way. After checking with the ARBA office, I found that they received their charter about three months ago and they only had a youth ARBA sanction number. All of the above cause delay and additional work for all parties. Please supply proper information when applying for your show sanction.

No correspondence is returned from this office without an explanation to the sender and no piece of correspondence to this office goes unanswered! If you have a question, an idea, a complaint, or just want to chat...., always feel free to contact me. I'll do my best to answer your questions, look into your complaints, forward your ideas to the proper people,.....and I'm always willing to chat. However, chatting comes second, I do put priorities first!

Remember, you can't get answers unless you ask questions!

May I leave you with some.....

LAST-MINUTE GIFTS....



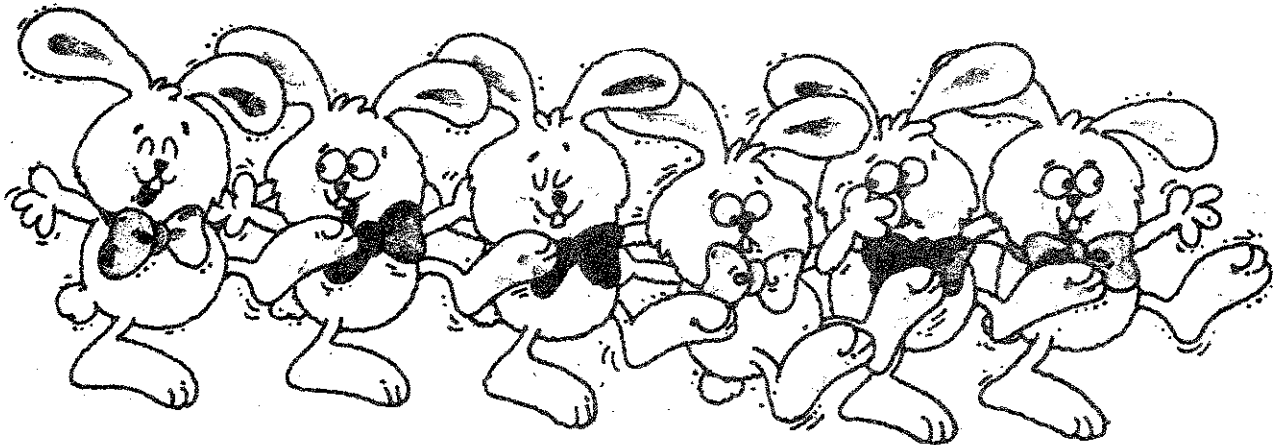
...That money can't buy:

- Keep a promise
- Keep a secret
- Share a dream
- Send her favorite flower
- Let someone have the last word
- Return a smile
- Laugh at his favorite story--again
- Let someone in line, in front of you
- Listen to a child
- Listen to an adult
- Say something nice to someone you like
- Say something nice to someone you don't like

MAY THE BEST OF BREED BE YOURS!

Have a "Happy", "Healthy", "Beautiful" Day!

Prima



ELECTION RESULTS

141 Ballots Received
135 Good Ballots
6 Spoiled Ballots

Submitted September 15, 1986 by Myrl Milhahn
Maxine Milhahn
Craig Nelson

Vice President

Marti Dill 73
Wenton Carlton 33

1987 National Dutch Show Judge

Dick Gehr 72
Al Butler 31
Vicki Hertel 23

1987 A.R.B.A. Convention Judge

Dick Gehr 74
Al Butler 28
Jim Kelly 23

1988 National Dutch Show Judge

Dr. T.E. Reed 89
Glen Carr 33
Scott Williamson 21
Al Butler 16

1988 A.R.B.A. Convention Judge

Glen Carr 39
Dick Gehr 30
Dr. T.E. Reed 26
Larry Bengtson 16

District 1 Director

George Parmer 7
Jan Coffelt 4
Jim Kelly 1
Vicki Hertel 1

District 3 Director

Lowell Simenson 12
Roger Eich 4

District 2 Director

Charles Christ 6
Vicki Hertel 2
Don Lovejoy 1
Laurie Lettire 1

District 5 Director

Dick Gehr 28

District 7 Director

Howard French 4
Wayne MacKinon 2
Paul Jurgelonis 1

YOUTH 1987 NDS Judge

Scott Williamson 6
Larry Bengtson 1

YOUTH 1988 NDS Judge

Dick Gehr 6
Scott Williamson 1
Gary Grimm 1

AROUND AGAIN

by Director Bill Geitzenauer

In response to my recollections of the Dutch shown in Iowa, I must say thanks to those that sent me letters (6) on their ideas. Initially I must state the fact that is is only my opinion and even though I hear you, my memories of the past forty years has not failed me yet. The statements made were "generally", meaning the majority, but not all.

The tortoise have in my opinion lost bright deep orange color with blue shadings (our standard) and will not admit that the shadings on most torts are blue when in fact they are black!

Because you raise tort with black shadings does not make it right in my mind, but just wanted to make you aware of the fact. Your continual inbreeding of this characteristic will not make it better. Eventually we will have balck-tortoise which are black with a very light brown cast.

The steel color is generally a laugh with most observed closer to gray than steel. A good steel should look black at ten feet away. When observing the shows the past couple of years, I have heard the question asked many times on the "spectators" side of the table, "Which ones are they doing now? Grays or what?" Sometimes it is hard to tell.

While on the characteristics of my longevity, I have found that the past ten years cow hocks has increased to a point that three out of four have it to some degree. I can see down the line some ten years, that our standard will have to be changed to "duck foot Dutch". Don't like it one bit and I think it will not reverse itself until judges disqualify a bunch regularly as a genetic defect!

Well, thank you people for writing your thoughts and particularly those of you that agree that something undesirable is happening. But all the same all of you deserve a big thanks for being both interested and interesting.

NEWS FROM DIRECTOR TOM DIETRICH

The A.R.B.A. Convention is fast approaching. Remember to save a good one for the seller's class. In buying rabbits through the seller's class, some excellent animals can be introduced to your herd and hopefully correct some faults that your rabbits may have. Some important things to consider when buying rabbits are:

1. Quality over Quantity - a couple of good rabbits will help you more than ten mediocre ones.
2. Young breeding stock is more desirable than the overly-fat older animal.
3. Compare and evaluate different animals for thier strengths and weaknesses.
4. Don't be afraid to ask questions if you want to know something.

Hope to see everyone at the Convention.

Tom Dietrich

The hot humid days of summer are past us now as fall approaches with its nice cool weather and abundance of shows. This past summer was one of the hottest we have had to deal with in this area for sometime with the humidity mostly above the 85% level. Although my rabbitry is nestled in a small hollow surrounded by large poplar and sycamore trees I still had to make use of the fans. The summer months always seem to cause problems in many rabbitries by causing the older bucks to go sterile or putting the rabbits into a molt. Now that summer is on its way out most of us need to start preparing for the cold winter months ahead, I hope to have an article in the Nov.-Dec. issue with some tips for winterizing the rabbitry and hope that someone may find it helpful. If anyone out there has a special way for preparing for winter I'm for sure all of us would like to hear from you, so please feel free to write an article and send it to the editor.

The A.R.B.A. Convention is only a couple of months away and I hope everyone has already made their reservations and are planning to show. I plan on attending at least a couple days but do to my class schedule I might have to cut some days short to run back home. Since Columbus is only a three hour drive from home and the University, I feel confident about being there unless a professor throws a test on me.

I hope to see you all in Columbus and wish you a safe journey there. Keep the nest boxes full and raise some good ones for Texas in the spring of 87.

Rick Bailey

NEW MEMBERS

<u>NAME</u>	<u>STATE</u>	<u>RECOMMENDED BY</u>
John Henfling	CA	ARBA
Lee Monahan	MN	Kirsten Bengtson
Tom & Leanne Francis	WI	Sue Strandwitz
Daniel Neuman	IL	
Lori Blatt	PA	Sally Luckenbill
Michelle Franklin	TX	
Jenny Wolters	NJ	
Jeff Bair	WV	
G. Joseph Colucci	OH	
Dennis R. Sparks	OH	ARBA
Betty Goldsmith	TX	
Dave Holloway	OR	
Joan Katulak	NY	
Vivian S. Hayes	SC	
Loretta Przybylowicz	OH	ARBA
William Przybylowicz	OH	ARBA
Travis D. Rusin	NH	Linda Parzyck
Shylo Blaauboer	NY	Joanne Blaauboer
Brandon Brown	WI	Elsie M. Brown
Dawn L. Hendryx	WY	Kathy Edwards
Stephen R. Mack	PA	
James P. Suchsland	MO	
Susan Jock	IN	ARBA
Patricia & Richard Mackay	NY	Steve & Rebekah Schilling
Karen Ortloff	MN	John Bach
Shari Milzarek	IN	
Robert L. Berry	VA	
Sandy S. Durst	PA	Kathy Olosky
Robin Cunningham	IL	Jack & Colleen Cunningham
Mona Rivera	CA	
Nathaniel Yangco	FL	
Greg Rogers	OH	
Dennis Putzler	OR	ARBA
Mrs. Candy Petteys	NY	

NEW MEMBERS

<u>NAME</u>	<u>STATE</u>	<u>RECOMMENDED BY</u>
Debbie Hotchkiss	CT	
John Jackson	IA	Martha Jackson
Chris Kilgard	IN	
Brenda Elder	WA	
Patrick Frazer	VT	
Erin Kelly	CA	Sara Nimtz

Thank You for joining with us and WELCOME TO THE ADRC! We also wish to give a special "THANK YOU" to those who recommended us! We hope your membership with the American Dutch Rabbit Club will be a long and happy one!

THANK YOU, IOWA!!!!!!

It's been long over due, but I did want to thank the National Dutch Show hosts in Iowa for a very nice show. Also thanks to all my Dutch friends for cards in the lose of my grandfather whom I truly miss.

Don't ever underestimate your rabbits. Since Grandfather's retirement, he helped feed and water. After his death we lost twenty seven rabbits which were on his side of the barn - one which went 29 days without feed and one that went crazy on us. We tried feeding with his gloves and jackets. We were going to destroy the rabbit, but a Mrs. Blakely asked if she could please try taking him home. I warned her that he tore one jacket, three pairs of gloves and one pair of jeans. He has won her two trophies since then and is fine. He needed a new scent and they say rabbits are just animals. They are wrong!

Well I better let you go, but I did want you to know I wanted to say Thank You!

Always in Dutch,

Brad Stockmaster

This was my second year to attend the National Dutch Show and it was just great. I would like to thank everyone who had anything to do with donating money or trophies. A big thank you should also to to Marti and Vern Dill for the Quiz Bowl. I really enjoyed it. Thanks for the memories and once again thank you to anyone who had anything to do with the National Dutch Show!

Sincerely,

Jim Smith, Ohio

DOMESTIC RABBIT WEEK CELEBRATED!

We at Springhill Manor in Battle Creek, Michigan celebrated Domestic Rabbit Week by inviting our residents and their relatives out to the dining room for a "Bunny Hop". Our main attractions were a Rex, a Mini Lop and two little Dutch Beauties.

The afternoon was spent holding, cuddling, and asking and answering questions about the bunnies. One elderly gentleman who is usually quiet, began telling us all about his rabbitry where he raised a herd of 200 rabbits!

I'm not sure who enjoyed the afternoon more. But I've got a hunch that the residents and the rabbits had a hopping good time!

Friends FUR ever!
Julie Crandall
172 James St.
Battle Creek, MI 49017

1986 NEW YORK STATE DUTCH SWEEPSTAKES

Top 20 Standings

	Points	4 BOB Won	4 BOS Won
1. Steven & Rebekah Schilling	1688	4	4
2. Charles Collins	458	0	0
3. Howard French	334	1	1
4. Gail Kaiser & Family	297	0	0
5. Eulalia Wickham	270	1	0
6. Mark Pecaric, N.J.	238	0	0
7. Steve Easterly, PA	188	0	1
8. Debbie Zimmer	174	1	0
9. Kathy Fine, N.J.	133	0	0
10. Nancy & Venessa Royce	104	2	0
11. Noel Palmer	102	0	1
12. Cathy DeShetter	100	1	0
13. Robert Page	92	0	0
14. Tom Stevens	76	0	1
15. Kay Buell	73	0	0
16. Donna & Bill Fulkes	65	0	0
17. Ernie & Steve Sperry	54	0	0
18. Linda Benjamin	53	0	0
19. Pat MacKay	42	0	0
20. Sandi Merritt	34	0	1

HOOSIER DUTCH FANCIERS SWEEPSTAKES FINAL - OPEN 1986

Top Ten Breeders Overall

1. R. & K. Rabbitry	2848	6. H. & B. Rabbitry	211½
2. Ray Rosing	2118	7. Joe Ramey	199
3. Ed Hewson	1737½	8. John I. Scott	186
4. K. & V. Bogan	1366	9. Alton Hinshaw	135
5. Sarah Teuscher	308	10. Lawrence Craven	96

Top 5 by Variety

Black

1. R.&K. Rbtry	912½
2. Ray Rosing	776
3. Ed Hewson	668
4. K.&V. Bogan	466
5. S. Teuscher	299

Tortoise

1. Ed Hewson	451
2. K.&V. Bogan	18
3. H.&B. Rbrty	12

Blue

1. K.&V. Bogan	810
2. R.&K. Rbtry.	778
3. Ed Hewson	397½
4. Ray Rosing	82
5. J.I. Scott	65

Steel

1. R.&K. RBTRY	57
2. Ray Rosing	42
3. C. Elliott	36
4. T. Smithey	28
5. J.I. Scott	6

Chocolate

1. Ray Rosing	1242½
2. R.&K. Rbtry	1100
3. Ed Hewson	397½
4. Joe Ramey	199
5. K.&V. Bogan	72

Gray

1. Ray Rosing	174
2. H.&B. Rbtry	72
3. Tammy Smithey	52
4. Carol Elliott	38

Top Ten Breeders Overall - YOUTH

1. David M. Jones	2799½	6. Melissa Baker	254
2. Bob Myers	2062½	7. TRC Rbtry (Cavender)	118
3. Todd Uran	1384	8. Lisa Taylor	36
4. Jay Shupp	274	9. Blaze n Saddles (Teuscher)	20
5. Roger Kult	260½	10. Carolanne Sopkema	20
		11. A. Michelle Busch	16

Top 5 by Variety - YOUTH

Black

1. D.M. Jones	2118½
2. Bob Myers	1331½
3. Todd Uran	597½
4. Jay Shupp	262
5. R. Kult	84

Tortoise

1. T. Uran	344
2. R. Kult	6

Blue

1. B. Myers	573
2. D.M. Jones	543
3. T. Uran	139
4. M. Baker	136
5. L. Taylor	24

Steel

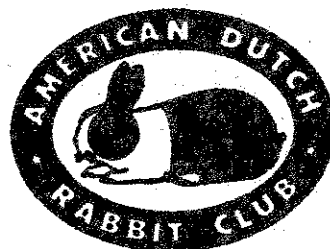
1. B. Myers	50
2. T. Uran	12

Chocolate

1. T. Uran	206
2. M. Baker	118
3. TRC Rbrty	110
4. B. Myers	108
5. R. Kult	82

Gray

1. D.M. Jones	180
2. T. Uran	85½
3. J. Shupp	12



YOU CAN'T BEAT THE DUTCH

Membership Expirations

MEMBERSHIP EXPIRATION

* THIS MEMBERSHIP EXPIRATION LIST IS CURRENT AS OF 09/07/86. IF YOU SENT IN YOUR RENEWAL AFTER THIS DATE, WE THANK YOU!

JULY 1986 (EXPIRED)

Aoshli Clifford Box 72 McCallum Ia 50554 07/15/86
 Bargerhoff Gary & Susan 39266 Garde Prairie Rd. Cassopolis Mo 64631 07/29/86
 Bargerhoff Heidi 39266 Garde Prairie Rd. Cassopolis Mo 64631 07/29/86
 Beard Yiffany 6588 Devils Backbone Ln. Loveland Co 80537 07/15/86
 Benjamin Becky PO Box 77-1492 Eagle River Ak 99717 07/13/86
 Blakeley Janice A. RD 1 Glenwild Rd. Middle Grove NY 12858 07/18/86
 Blockerth B.F. Rt 5 Box 718 Laurens SC 29358 07/07/86
 Brunelli M.1919 PO Box 783 Alamosa Co 81181 07/31/86
 Collins David M. 6411 Swift Creek Rd. Lithonia Ga 30058 07/24/86
 Fletcher Megan 5788 Lower 167nd. St. Farmington Mo 58224 07/18/86
 Gotselith Jack Box 128 Harrod Oh 45628 07/01/86
 Hassett J.C. PO Box 378 Present In 46137 07/16/86
 Hastings Jeanne 3319 Daniels Rd. Raisinville NY 14131 07/23/86
 Heppner Michelle 11625 Evergreen Detroit Mi 48228 07/30/86
 Hyer Lawrence 4719 - 47th St. Lubbock Tx 79414 07/30/86
 Kaufman Trent 3424 Pine Bluff Rd. Columbus Oh 43229 07/23/86
 Neilson Conrad & Madeline 2716 Connors Rd. Stockton Mo 64629 07/24/86
 Root Joshua 489 Escobar St. Fremont Ca 94539 07/20/86
 Oyer Kitty E. 9 Calabasas Rd. Fremont Ca 94539 07/20/86
 Powers Larry PO Box 325 DeSoto Tx 75115 07/24/86
 Ralph Nathan 10828 Helber Rd. Logan Oh 43139 07/02/86
 Ramey, Jr. Joseph D. 4945 Helton St. Greenwood In 46142 07/12/86
 Ross Becky 19772-H. 69th Pl. Arvada Co 80004 07/01/86
 Sines George & Nancy (Dorset) Rt 2 Box 319 Fairview Wv 25778 07/15/86
 St. Clair Lacey 2157 W. 28th St. Cleveland Oh 44113 07/08/86
 Staton Dena 12625 Atkinson Rd. Lodi Ca 95248 07/02/86
 Storzler Jerry RD 3 Box 328 Runxautaney Pa 15767 07/18/86

AUGUST 1986 (EXPIRED)

Briesler Beth PO Box 191 234 W. Pleasant Canada Oh 43018 08/18/86
 Brewer Harrie & Raymond Rt 3 Box 785 Saluda SC 29139 08/25/86
 Brewer Jason Rt 3 Box 785 Saluda SC 29139 08/09/86
 Brewer Jamie Rt 3 Box 785 Saluda SC 29139 08/09/86
 Carpan Howard R. Rt 1 Big Spring Ky 40186 08/08/86
 Coonien Chris 915 West 2nd Hutchinsom Ks 67581 08/18/86
 Corvill Chris Rt 4 Ames Ia 50818 08/22/86
 Dukes Mary Rt 1 Box 452-A Chico Ca 95726 08/10/86
 Foss Ron PO Box 43 Hawthorth SD 57075 08/24/86
 George Steve 1087 - 10th. Ave. S.W. Austin Mo 65612 08/13/86
 Granderson Dora St. Rt. Box 235-F Leopold In 47551 08/13/86
 Haas Jeanette Rt 3 Box 149 Osceola Wi 54028 08/09/86
 Hauserley Gordon & Marilyn 24931 Woodfield School Galtersburg Md 20877 08/25/86
 Hooper Kevin 1975 Millies Rock Rd. Drexden Oh 43021 08/16/86
 Krueger Brad Rt 2 Box 61 Milton Ia 52778 08/30/86
 Lincoln Loren & Linda R.#1 Box 186 Springfield In 31172 08/05/86
 McCullough Roy Box 97 Black Hawk SD 57118 08/13/86
 Moore Scott 381 El Paso Belleville Il 62221 08/27/86
 Nolan Meg 2137 Mastin Ave. Stafford Va 22456 08/23/86
 Norman Michelle Box 68 Monango Wb 58471 08/17/86
 Patten Antoinette & Anthony 223 Wareha St. Middleboro Ma 02344 08/26/86
 Phillips Anne E. 638 - 2nd. St. H.E. Glenwood Mo 64334 08/15/86
 Putzler Dennis 1568 N.E. Jackson School Rd. Hillsboro Or 97124 08/15/86

MEMBERSHIP EXPIRATION

AUGUST 1986 (EXPIRED)

Saeger Barry PO Box 744 Decatur Tx 76234 08/16/86
 Shaw Hilary RD 2 Box 71 New Hartford Ct 06257 08/11/86
 Sherry Jim 2891 Jean Caine Grand Junction Co 81594 08/28/86
 Trudeau Robert Rt 2 Box 44 Jefferson SD 57838 08/18/86
 Ware Betty B. 327 Miller Blvd. Havelock Nc 28532 08/28/86
 West Christy RR 3 Canal Il 62821 08/18/86
 Whitley Ray 29781 Hickey Rd. New Baltimore Mi 48047 08/14/86

SEPTEMBER 1986

* Addison Barbara & Conall Box 354 St. John Ks 67576 07/25/86
 Addison Andrea L. Box 356 St. John Ks 67576 07/25/86
 Addison Alicia E. Box 356 St. John Ks 67576 07/25/86
 Barnes Brian Rt 3 Quincy Il 62301 07/18/86
 Barnett Frank Rt 2 Box 52 Grant Park Il 60948 08/16/86
 Becker Ross 8288 Stanley Rd. Apt. 43 Minneapolis Mn 55437 07/21/86
 Brady Maria 91 Blade Way Walnut Creek Ca 94595 07/22/86
 Brown Nancy L. 17825 - 6th Ave. S.W. Seattle Wa 98166 07/04/86
 * Carlton Hermon 14130 N. Como Dr. Tucson Az 85741 07/09/86
 Coalho Jaizis A. 69 Plain St. Rehoboth Ma 02789 07/29/86
 Coppie Gabby 85421 Seftin-Cressell Hns. Pleasant Hill Or 97155 09/21/86
 Davis Erin 42835 N. Graeford Rd. Antioch Il 60002 07/01/86
 Drubit Sandra & George 5 Troy Blvd. Red Hook NY 12571 09/13/86
 Easter Daniel 12 S. Locust Manteno Il 60950 07/21/86
 Eaton Beth 3561 Pesce Ln. Central Point Or 97582 06/18/86
 Eversburg Dick 2188 S. 35th E. LaPorte In 46338 07/28/86
 Funarino Mike & Karen 147 Maple Dr. Glenwood Il 60425 09/19/86
 Gittinger Raymond 6940 S. Star Rt. 108 Tiffin Oh 44883 07/23/86
 Hahn Stan 3468 Country Aire Dr. Cedarburg Wl 53012 07/18/86
 Harrie Karen & Delbert 988 Circle Dr. PO Box 661 Wisner Ne 68791 09/07/86
 Harrie Michelle 988 Circle Dr. PO Box 661 Wisner Ne 68791 09/07/86
 Hodson Mrs. M.L. i Redcar Rd/Dunsdale Nr Gainsborough Cleveland England TS14 5BR 09/15/86
 Holcombe Richard Rt.3 Box 245 Hurricane Wv 25326 09/13/86
 Holcombe Phillip Rt.3 Box 121 Breeze Il 62228 09/21/86
 Kline Donald 1412 Bronceus Lincoln Il 62456 09/18/86
 * Krause Roger & Bernice 1187 Adams Dr. Colorado Springs Co 80904 09/29/86
 Nelson Craig 4467 No. 3 West Milan Portage Mi 49882 09/02/86
 Oresby Steve 268 Trudeau Dr. Sarnia Ont. Canada N7S 4K7 09/21/86
 Peters Sue 828 Augusta Ave. Morgantown Wv 25305 07/16/86
 Peterson Andrea 3644 Bus. Rt. 28 Belvidere Il 61008 09/06/86
 Resner Richard PO Box 395 Wilsonville Or 97170 07/03/86
 Reynolds Danielle 891 Nancy Lane Chico Ca 95926 09/12/86
 Rivers Victor Pena Carr. 779 607 Hwy Int. NC-2 Box 3977 Ro. Falmes, Coarbo PR 00842 09/09/86
 Rosine Ray 3178 Saeshire Blvd. Indianapolis In 46268 09/22/86
 Royen Jr. Robert 10055 West Field Rd. Swartz Creek Mi 48873 09/23/86
 Rogant Marie Box 66 Tampa Ok 73368 09/04/86
 Sheehy Patrick 50 Farwell Rd. Tyrnsboro Ma 01879 09/25/86
 Sizemore Jennifer 4673 S. Sales-Harren Rd. Centfield Oh 44086 09/23/86
 Smith Jimmy 128 E. Frederick St. Dowlstown Oh 44236 09/19/86
 * Williamson Scott & Bianne 6388 E. Ashlan Clovis Ca 93612 09/17/86

SWEEPSTAKES STANDINGS AS OF 6/30/86

OPEN

1. Gary Pace, VA	1,041 pts.	4 shows	
2. Steve & Rebecca Schilling, NY	939 $\frac{1}{2}$	3	
3. Mark Pecaric, NJ	926	4	
4. Kevin & Vicki Bogan, OH	868	4	
5. Charles Christ, AZ	786 $\frac{1}{2}$	2	
6. Jim Smith, OH	664	3	
7. Steve Esterly, PA	593	5	
8. Eric Mixdorf, IA	586 $\frac{1}{2}$	3	
9. Betty Storey, MI	569	4	
10. Jack Wireman, OH	552 $\frac{1}{2}$	4	
11. Evenburg & Stearns, IN	512 $\frac{1}{2}$	3	
12. Carl Decker, PA	467	1	
13. Reggie & Kevin Shull, IN	466	3	
14. Ricky Wood, VA	440	3	
15. Jan & Russ Coffelt, WA	437	5	
16. Larry Nixon, OH	418	2	
17. Anthony Micallef, MI	389	1	
18. Jim & Fran Schettler, CA	376	3	TIE
19. Tammy Wise, OH	376	3	TIE
20. Andrew VanDee, IA	374	4	

YOUTH

District 1: NONE SHOWN

District 2:	1) Sara Nintz, CA	100 $\frac{1}{2}$	1
	2) Jill Giron, CA	86	1
	3) Mark Dykes, CA	15	1
	4) J. Siebe, CA	6	1

District 3:	1) Kirsten Bengston, MN	77	2
	2) Steve Busche, WI	54	1
	3) Susan McAtee, IA	41	1
	4) Corey Brenner, WI	36	1
	5) Ryan Kerrigan, MN	18	1
	5) Julie Schmall, WI	18	1
	5) Jenny Wendorff, WI	18	1

District 4:	1) Ryan Bayer, TX	6	1
-------------	-------------------	---	---

District 5:	1) David L. Jones, IN	387	4
	2) Eric Meyer, IL	316	3
	3) Jeanette Demers, IL	237 $\frac{1}{2}$	2
	4) Donald Leonard, IL	77	2
	5) Dawn Broeker, IN	49	2

District 6: NONE SHOWN

District 7:	1) Jennifer Winship, MA	571	6
	2) Darlene Zelinski, MA	398 $\frac{1}{2}$	6
	3) Tina Calvani, MA	332 $\frac{1}{2}$	5
	4) Jaimie Coelho, MA	168	5
	5) Jeff Chirpich, ME	43	1

District 8:	1) Jim Smith, OH	752	4
	2) Todd Uran, OH	468 $\frac{1}{2}$	2
	3) Robert Royce, MI	243	2
	4) Bob Myers, OH	242	2
	5) Amy Minter, MI	195	2

District 9:	1) Kelly Hegedus, NJ	36	1
-------------	----------------------	----	---

Show Reports - Page 1

OPEN SHOW REPORTS

May 10, 1986 Indianhead RBA at St. Croix Falls, WI 3 Dutch, 2 exh, 1 nm
 JUDGE: Bob Koch - BOB blk JB nm - BOS blk SD nm - 3 blk nm - POINTS: Corey
 Brenner 6

May 10, 1986 Northwestern PA RBA at Edinboro, PA 10 Dutch, 4 exh, 1 nm
 JUDGE: Bob Shaftos - BOB blk SD David Kemp - BOS blk SB Wilford Kemp -
 5 blk Miller - 5 blue Kemp - POINTS: Rita Miller 53; David Kemp 31; Wilford &
 Lois Kemp 25

May 10, 1986 Oklahoma RBA at Oklahoma City, OK 19 Dutch, 11 exh, 5 nm
 JUDGE: Buck Latham - BOB blk JD Merle Rylant - BOS blue JB nm - 4 blk Rylant -
 4 blue Briscoe - 9 choc Victory - 1 tort Morgan - 1 steel Daly - POINTS:
 Merle Rylant 75; Joe Victory 40; Tami Morgan 21; Jason Daly 8; John Daly 6;
 Kay Daly 6

May 10, 1986 Smoky Mountain RB at Knoxville, TN 25 Dutch, 6 exh, 2 nm
 JUDGE: Harold Guthrie - BOB blk JB Tommye & Ralph Simpson - BOS blk JD nm -
 12 blk Simpson - 4 blue Brewer - 4 tort Brewer - 1 steel Brewer - 4 grey
 Brewer - POINTS: Ray Brewer 108; T&R Simpson 91; Christopher Pate 17; Carol
 Snyder 6

May 10, 1986 Arizona Mountain RF at Prescott, AZ 43 Dutch, 3 exh, 1 nm
 JUDGE: Mike Lovejoy - BOB blk SB Charles Christ - BOS blue JD Christ -
 15 blk Christ - 11 blue Christ - 11 choc Kelly - 1 tort Kelly -
 2 steel Kelly - 3 grey Kelly - POINTS: Charles Christ 47½; Bill & Trudy
 Kelly 179

May 10, 1986 Indianhead RBA at St. Croix Falls, WI 24 Dutch, 7 exh, 3 nm
 JUDGE: Bob Koch - BOB blk SB Phil Shivers - BOS blk SD Shivers - 14 blk
 Shivers - 4 blue Fait - 5 choc Fait - 1 tort DQ - POINTS: Phil Shivers 190;
 Sharon Fait 42; Karen Fait 35; L&L Larson 31

May 10, 1986 Northeastern PA R&CBA at Hartford, PA 30 Dutch, 7 exh, 1 nm
 JUDGE: Chuck Alexander - BOB blue SB Mark Pecaric - BOS blk SD nm - 13 blk
 Storey - 9 blue Bussema - 6 choc Bussema - 1 tort Storey - 2 grey Storey -
 POINTS: Betty Storey 158; Tracy Bussema 90½

May 10, 1986 Richmond RBA at Ashland, VA 38 Dutch, 5 exh
 JUDGE: Lyman Franklin - BOB tort SB Gary Pace - BOS blue JD Pace - 7 blk
 Pace - 9 blue Pace - 13 choc Pace - 7 tort Pace - 1 steel Wood - 1 grey
 Pace - POINTS: Gary Pace 236; Ricky Wood 155; G&M Hammarly 58; Liz Money-maker
 30

May 10, 1986 North Arkansas REA at Harrison, AR 18 Dutch, 3 exh, 2 nm
 JUDGE: Fibber McGehee - BOB blk JD Jack Gilmore - BOS blk JB Gilmore - 13 blk
 Gilmore - 3 blue Gilmore - 2 choc nm - POINTS: Jack Gilmore 157

May 10, 1986 Florida State RBA at Bartow, FL 22 Dutch, 7 exh, 4 nm
 JUDGE: Jim Lemon - BOB blue SD Betty Bond - BOS tort JB Ed Manning - 9 blk
 Bond - 7 blue Bond - 1 choc DQ - 4 tort Manning - 1 grey Manning - POINTS:
 Betty Bond 79; Ed Manning 59; Carl Damm 20

May 10-11, 1986 California State R&C Conv at CA 62 Dutch, 15 exh, 7 nm
 JUDGE: Fred Greiner - BOB grey JB Jack Cook - BOS tort SD Scott A. Williamson -
 20 blk Mowery - 11 blue Mowery - 7 choc nm - 12 tort Williamson - 4 steel
 Schettler - 8 grey Cook - POINTS: Scott Williamson 157; Sandra Burgett 137;
 Jim Schettler 132; Katie Mead 99; Jack Cook 80; Bernice Mowery 36; Dani
 White 18; James Stacy 12

May 3, 1986 South Mississippi RBA at Gulfport, MS 10 Dutch, 1 exh 1 nm

May 3, 1986 Richland Co RBA at Mansfield, OH 8 Dutch, 1 exh
 JUDGE: Harold Krahl - BOB blk JB Robert Shaw - BOS blk SD Shaw - 4 blk JB
 Shaw - 2 blue JB Shaw - 2 choc SD Shaw - POINTS: Robert Shaw 60½

May 3, 1986 Tom Green Co RC at San Angelo, TX 28 Dutch, 6 exh, 4 nm
 JUDGE: Walter Gibson - BOB tort JB Bill Welpe - BOS blk JD nm - 4 blk JD nm -
 6 blue JB nm - 3 choc JD DuBose - 14 tort JB Welpe - 1 steel SB nm - POINTS:
 Bill Welpe 25½; Gloria DuBose 28

May 3, 1986 Briar Patch RC at San Angelo, TX 31 Dutch, 7 exh, 5 nm
 JUDGE: Weidon Whal - BOB blk SD nm - BOS blue JB nm - 5 blk SD nm - 8 blue JB
 nm - 3 choc SB nm - 14 tort JD Welpe - 1 steel SB nm - POINTS: Bill Welpe
 260; Gloria DuBose 36

May 3, 1986 Northwest RBA at WA 36 Dutch, 12 exh, 4 nm
 JUDGE: George Germaine - BOB blk JD Mike Edris - BOS blk JB Lloyd Gregg -
 19 blk JD Edris - 5 blue SB Peterson - 2 choc JD Edris - 2 tort SB McDaniel
 5 grey SB Coffelt - POINTS: Donna Peterson 238; Jan Coffelt 102; Mike Edris 62
 Lloyd Gregg 55; Daniel Keck 21; Della McDaniel 12

May 4, 1986 Northwest RBA at WA 29 Dutch, 9 exh, 3 nm
 JUDGE: Russ Powell - BOB blk SB Jan & Russ Coffelt - BOS blk JD Mike Edris -
 16 blk SB Coffelt - 5 blue SB Peterson - 2 choc SD Edris - 3 tort SB nm -
 1 steel JB Farmer - POINTS: Jan & Russ Coffelt 100; Mike Edris 80½; Donna
 Peterson 71; Lloyd Gregg 19; Della McDaniel 14; G&M Farmer 6

May 4, 1986 Empire State RBA at Syracuse, NY 37 Dutch, 8 exh, 2 nm
 JUDGE: Howard Keller - BOB blk JB Steve & Rebecca Schilling - BOS blue SD
 Schilling - 19 blk JB Schilling - 5 blue SD Schilling - 7 choc JB Schilling -
 4 tort JB Schilling - 2 grey SD Fulkers - POINTS: Steve & Rebecca Schilling
 305½; Howard French 52; Gail Kaiser 52; Charles Collins 30; David Wickham
 18; Donna & Bill Fulkers 14

May 4, 1986 North East Ohio RF at Jefferson, OH 8 Dutch, 3 exh, 2 nm
 JUDGE: Bing Harris - BOB blk SD Rita Miller - BOS choc SB nm - 3 blk S D
 Miller - 1 blue SB nm - 3 choc SB nm - 1 grey JD nm - POINTS: Rita Miller 38

May 4, 1986 Mountaineer RBC at Fairmont, WV 9 Dutch, 4 exh, 2 nm
 JUDGE: W.W. McConnell - BOB blk SD Sue Peters - BOS blk SB Lorie Peluso -
 7 blk SD nm - 2 blue JD Peluso - POINTS: Sue Peters 39; Lorie Peluso 16½

May 4, 1986 Essex Co R&CBA at Topsfield, MA 1 Dutch, 1 exh
 JUDGE: Arthur Burke - BOB blue SD Bruce Bain - 1 blue SD Bain - POINTS:
 Bruce Bain 7

May 4, 1986 Mid-Ohio RBA at London, OH 38 Dutch, 5 exh, 1 nm
 JUDGE: Dick Allebach - BOB blk JD Kevin & Vicki Bogan - BOS grey JB Norman
 McNary - 9 blk JD Bogan - 17 blue JD Bogan - 3 choc SB McNary 1 tort SB
 Bogan - 4 steel SB McNary - 4 grey JB McNary - POINTS: Kevin & Vicki Bogan
 308; Norman McNary 121; Bonnie Kirker 44; Urban Goetz 18

May 10, 1986 Copperas Cove RF at Copperas Cove, TX 17 Dutch, 6 exh, 3 nm
 JUDGE: Tex Thomas - BOB blk SD Bill & Sharon Reid - BOS blk JB Reid - 8 blk SD
 Reid - 4 blue JB nm - 1 choc JB nm - 2 tort JB Bonnot - 2 grey Finch -
 POINTS: Bill & Sharon Reid 61½; Pam Finch 30; Cecil Bennot 6

May 10, 1986 Lake Area RBA at Lake Arthur, LA 6 Dutch, 1 exh
 JUDGE: C.M. Carroll - BOB blue JD John Guerin - BOS choc SB Guerin - 4 blue JD
 Guerin - 2 choc SB Guerin - POINTS: John Guerin 53

Show Reports - Page 2

- May 11, 1986 Zanesville RB at Zanesville, OH 65 Dutch, 9 exh, 2 nm
 JUDGE: Al Butler - BOB tort SB Jack Wireman - BOS blk JD K&V Bogan - 18 blk Hooper - 20 blue Bogan - 10 choc Hooper - 11 tort Wireman - 5 steel Hooper - 1 grey Wise - POINTS: K&V Bogan 35½; Jack Wireman 17½; Tammy Wise 158; Kevin Hooper 143; Mary Maxwell 84; Dorinda Fisher 18; R&R Billups 12
- May 11, 1986 Cumberland Co RBA at Cumberland Fair 20 Dutch, 6 exh
 JUDGE: Henry Cumbers - BOB blk SB Chris Gurney - BOS tort SD Jennifer Jermyrn 5 blk Gurney - 2 blue Thurston - 1 choc Hurd - 12 tort Jermyrn - POINTS: Jennifer Jermyrn 105; Cindy Thurston 62; Chris Gurney 38; John Boyle 26; Irene DaFonte 25; Marion Hurd 6
- May 11, 1986 Miss-Sala-Bash RBA at Peru, IN 18 Dutch, 1 exh
 JUDGE: Caleb Thomas - BOB blk JD R&K Shull - BOS steel JB Shull - 6 blk Shull - 5 blue Shull - 5 choc Shull - 2 steel Shull - POINTS: Reggie & Kevin Shull 167
- May 17, 1986 Central Connecticut R&CBA at No. Haven, CT 17 Dutch, 4 exh, 3 nm
 JUDGE: Elsie Szczepek - BOB choc SB nm - BOS blk SD nm - 8 blk Merritt - 1 blue nm - 4 choc nm - 2 tort Merritt - 2 grey nm - POINTS: Sandi Merritt 36
- May 17, 1986 Lawrence Co RBA at Lawrenceburg, TN NO DUTCH SHOW
- May 17, 1986 Saginaw Valley R&CBA at Saginaw, MI 68 Dutch, 10 exh, 1 nm
 JUDGE: John Meltsveden - BOB blue SB Ed McKinley - BOS tort JD Anthony Micallef - 26 blk nm - 18 blue McKinley - 11 choc Micallef - 12 tort Micallef - 1 grey Stoney - POINTS: Anthony Micallef 389; Ed McKinley 164; Betty Stoney 150; Ray Willey 132; Ken Kuzminski 98; Debbie Pilpponen 46; Leonard Kuzminski 32; Bob Caldwell 18
- May 17, 1986 Crawford Co RBA at Bucyrus, OH 40 Dutch, 7 exh, 1 nm
 JUDGE: Mark Henry - BOB blk SB Jim Smith - BOS blk JD Mike Stinehelfer - 14 blk Smith - 7 blue Stinehelfer - 5 choc Stinehelfer - 7 tort Smith - 5 steel Stinehelfer - 2 grey Smith - POINTS: Jim Smith 175; Myron Stinehelfer 104; Robert Shaw 68; Mary Maxwell 56; Andy Barton 18; Bill Lowery 12
 * * * BEST FANCY * * *
- May 17, 1986 Aberdeen Area RC at Aberdeen, SD 6 Dutch, 3 exh, 3 nm
- May 17, 1986 St. Joe Valley R&C at Argos, IN 41 Dutch, 9 exh, 4 nm
 JUDGE: George Raisor, Jr. - BOB blk JB Evenburg & Stearns - BOS blk SD Evenburg & Stearns - 15 blk Evenburg & Stearns - 11 blue Shull - 5 choc Bussema - 4 tort Shull - 3 steel Shull - 3 grey Dill - POINTS: Evenburg & Stearns 201½; Reggie & Kevin Shull 167; Vern & Marti Dill 66; Tracy Bussema 48; Dafy-Dill 12
- May 17, 1986 Oregon R&C Shows, Inc. at Canby, OR 38 Dutch, 9 exh, 5 nm
 JUDGE: Vern Palmbiad - BOB tort JB Jill Pfaff - BOS blk JD nm - 17 blk Copples - 4 blue Parmer - 7 choc nm - 2 tort Pfaff - 3 steel nm - 4 grey nm - POINTS: Jill Pfaff 32; Gabby Copples 30; Greg Hickmott 20; G&M Farmer 18
- May 17, 1986 Springfield RB at Ozark, MO 11 Dutch, 2 exh, 1 nm
 JUDGE: Stan Pulliam - BOB blk SB Jack Gilmore - BOS blk SD Gilmore - 7 blk Gilmore - 3 blue Gilmore - 1 tort nm - POINTS: Jack Gilmore 100½
- May 17, 1986 Suburban Twins RC at Farmington, MN 14 Dutch, 3 exh
 JUDGE: Conall Addison - BOB blk SD Phil Shivers - BOS blk SB Shivers - 8 blk Shivers - 4 blue Larson - 2 tort Larson - POINTS: Phil Shivers 106; I&L Larson 60
- May 17, 1986 Eastern Dutch RFC at New Village, NJ 160 Dutch, 14 exh, 2 nm
 JUDGE: Lee Engle - BOB tort SB Gary Pace - BOS steel SD Carl Decker - 44 blk Decker - 28 blue Pace - 25 choc Pace - 32 Tort Pace - 16 steel Decker - 15 grey Esterly - POINTS: Gary Pace 463; Steven Esterly 416; Carl Decker 467;
- Bill Geitzenauer 247; Warren McNamara 245; Mark Pecaric 230; Ricky Wood 171; Hero Wolters 135; G&M Hamersley 88; Ken Preede 72;
- May 17, 1986 Garden City RBA at Missoula, MT 23 Dutch, 7 exh, 2 nm
 JUDGE: Jeff Jewett - BOB blk SD Heather McLeod - BOS blk SB McLeod - 13 blk SD McLeod - 6 blue SD Farmer - 4 choc JB McCool - POINTS: Jeather McLeod 158½; Fran McCool 24; Pat & Judy Farmer 24; Ellis Houseman 24; Kelly Norwood 1.
- May 17, 1986 Sierra Nevada RBYC at Reno, NV 38 Dutch, 10 exh, 1 nm
 JUDGE: Darryl Bramhall - BOB blk JB Jack Cook - BOS blk SD Tonya Elliott - 18 blk SD Elliott - 7 blue JB Maddox - 5 choc JB Duncan - 2 tort SB Schettler 3 steel JD Cook - 3 grey JB Cook - POINTS: Jim Schettler 100; Tonya Elliott 95; Chris Maddox 45; Jacqueline Duncan 30; Donna Peterson 24; Anna Lisa Miller 18; Jack Cook 18; Dan White 7
- May 18, 1986 Garden City RBA at Missoula, MT 8 Dutch, 5 exh, 1 nm
 JUDGE: Mark Bender - BOB blk JB Kelly Norwood - BOS blue SD Pat & Judy Farmer 2 blk JB Norwood - 4 blue SB Lindquist - 2 choc JB McCool - POINTS: Kelly Norwood 20; Lola Lindquist 18; Pat & Judy Farmer 18; Fran McCool 12
- May 18, 1986 Eastern Iowa RBA at Palo, IA 29 Dutch, 6 exh, 2 nm
 JUDGE: Larry Bengston - BOB tort SD Eric Mixdorf - BOS blk SB Eric Mixdorf - 6 blk Mixdorf - 10 blue Mixdorf - 3 choc Van Dee - 7 tort Mixdorf - 3 grey Mixdorf - POINTS: Eric Mixdorf 198½; Andrew VanDee 89; Duff Amdahl 38; Dennis McAtee 21
- May 18, 1986 Cattaraugus Co RBA at Olean, NY 18 Dutch, 8 exh, 5 nm
 JUDGE: ? - BOB blk SB nm - BOS blue JD Johnny Baker - 7 blk nm - 3 blue Baker - 4 tort ? - 4 choc ? - POINTS: Johnny Baker 35; Rita Miller 30; Kimberly Drew 20
- May 18, 1986 New England Dutch RC at Auburn, MA 47 Dutch, 7 exh, 2 nm
 JUDGE: Elsie Szczepek - BOB blk JB Deborah Zimmer - BOS tort JD Hilary Shaw 14 blk JB Zimmer - 16 blue Taylor - 8 choc Zimmer - 6 tort JD Shaw - 3 grey Dunning - POINTS: Wayne Mackinnon 174; Deborah Zimmer 109; Pam Dunning 133; Hilary Shaw 64½; Charles Taylor 32
- May 18, 1986 National Capital RBA at Gaithersburg, MD 62 Dutch, 9 exh, 2 nm
 JUDGE: Harry Rice - BOB blk SD Steven Esterly - BOS blue JB Esterly - 14 blk SD Esterly - 15 blue JB Pace - 19 choc SB Pace - 1 tort SB Pecaric - 1 steel SB Wood - 2 grey SB Esterly - POINTS: Steven Esterly 249; Mark Pecaric 217; Gary Pace 196; G&M Hamerley 152; Ricky Wood 114; Liz Moneymaker 28
- May 18, 1986 Southeastern RC at Union Grove, WI 9 Dutch, 3 exh, 1 nm
 JUDGE: Orville Bloomquist - BOB blk JB Dick Gehr - BOS grey JD Gehr - 5 blk JB Gehr - 2 blue JB Gehr - 1 steel JB Gehr - 1 grey JD Gehr - POINTS: Dick Gehr 37½; Ron Koczal 39
- May 18, 1986 Ilikana RBA at Terre Haute, IN 24 Dutch, 4 exh, 2 nm
 JUDGE: Howard Keller - BOB blk JB Ray Rosing - BOS blk SD Rosing - 7 blk Rosing - 1 blue Scott - 12 choc Rosing - 1 steel nm - 3 grey Rosing - POINTS: Ray Rosing 245; John Scott 26
- May 18, 1986 Central Ontario RBC at Blackstock, Ont. Can. 29 Dutch, 8 exh, 5 nm
 JUDGE: Jim Graybeal - BOB tort JB Pete Thompson - BOS blk SD nm - 4 blk nm - 4 blue Thompson - 6 choc nm - 9 tort Thompson - 3 steel nm - 3 grey nm - POINTS: Pete Thompson 101; Doruna & Bill Fulkes 15; David Wickham 12
- May 18, 1986 Nebraska R&CBA at Springfield, NE 13 Dutch, 5 exh, 1 nm
 JUDGE: Clyde Lucas - BOB steel JB Susan Phillips - BOS blue SB Phillips - 3 blk nm - 4 blue O'Connell - 4 choc nm - 2 steel Phillips - POINTS: Susan Phillips 43½; Martha Jackson 20; Toni Hawthorne 6; Diane O'Connell 6

May 24, 1986 Huntington RBA at Huntington, IN 46 Dutch, 8 exh, 1 nm
 JUDGE: Harry Rice - BOB blue JD Goeglein & Shaw - BOS blk SB Everburg & Stearns;
 17 blk Everburg & Stearns - 15 blue JD Goeglein & Shaw - 5 choc Hewson
 3 tort Hewson - 3 steel Shull - 1 gray Gehr - POINTS: Ed Hewson 180; Everburg
 & Stearns 149; Reggie & Kevin Shull 132; Goeglein & Shaw 76; Dick Gehr 58;
 David Jones 18; Mike Duncan 10
 May 24, 1986 Lake Shore RBA at Muskegon, MI 34 Dutch, 6 exh, 2 nm
 JUDGE: Mavis Ropp - BOB blk JD Vern & Marti Dill - BOS tort JB Paul Dill -
 9 blk Dill - 9 blue Bussena - 7 choc Storey - 4 tort Dill - 1 steel Dill -
 4 gray Dill - POINTS: Vern & Marti Dill 144; Betty Storey 136; Tracy Bussena
 64; Paul Dill 41
 May 24-25, 1986 Longs Peak RB at Pueblo, CO 20 Dutch, 3 exh, 1 nm
 JUDGE: Art Nelson - BOB blue SD nm - BOS tort SB Kristi Brunelli - 10 blk nm -
 3 blue nm - 4 choc Brunelli - 3 tort Brunelli - POINTS: Kristi Brunelli 49;
 Andy Etzles 48
 May 24, 1986 South Plains RBA at Siminole, TX 26 Dutch, 7 exh, 7 nm
 Northwestern Wyoming RBA at Powell, WY 3 Dutch, 2 exh, 2 nm
 May 24, 1986 Sandhills RBA at Seminole, TX 26 Dutch, 7 exh, 7 nm
 May 25, 1986 Crawford Co RC at Meadville, PA 14 Dutch, 6 exh, 1 nm
 JUDGE: Howard Keller - BOB blue SD David Kemp - BOS choc SB Brenda Beardsley
 4 blk Kemp - 8 blue Kemp - 1 choc Beardsley - 1 tort Taylor - POINTS: David
 Kemp 44; Charles Taylor 32; David Wickham 25; Wilford & Lois Kemp 18; Rita
 Miller 6
 May 25, 1986 Green Mountain RBA at Rutland, VT 12 Dutch, 8 exh, 6 nm
 JUDGE: Darlene LaRichelle - BOB blue SD nm - BOS choc SB nm - 3 blk nm -
 3 blue nm - 2 choc nm - 3 tort Jones - 1 gray Sweet - POINTS: Arlene Jones
 30; Betty Sweet 6
 May 25, 1986 Huron Co RBA at Norwalk, OH 37 Dutch, 5 exh,
 JUDGE: Willie Davis - BOE tort SB Jack Wireman - BOS choc SD Wireman -
 9 blk Nixon - 6 blue Nixon - 5 choc Wireman - 6 tort Wireman - 8 steel Nixon
 1 gray Stockmaster - POINTS: Larry Nixon 154; Jack Wireman 84; Brad Stockmaster
 58; MikeStinehaifer 44; John Macrum 12
 May 31, 1986 Florida Sunshine RC at Hollywood, FL 46 Dutch, 8 exh, 4 nm
 JUDGE: Eugene Iamon - BOB blk JD Betty Bond - BOS blk JB Leslie Haynie -
 23 blk Bond - 14 blue Haynie - 5 choc ? - 2 tort Manning - 2 gray Manning -
 POINTS: Leslie Haynie 289; Bob & Betty Bond 180; Zabrina Zirkle 48; Ed Mannin
 47
 May 31, 1986 Florida Sunshine RC at Hollywood, FL 48 Dutch, 12 exh, 6 nm
 JUDGE: Mark Roller - BOB gray SB Leslie Haynie - BOS blk JD Haynie - 24 blk
 Haynie - 15 blue Manning - 5 choc nm - 2 tort Manning - 2 gray Haynie - POINTS
 Leslie Haynie 184; Zabrina Zirkle 71; Ed Manning 66; Bob & Betty Bond 54;
 Robert Haynie 36;
 May 31, 1986 Napa Solano RG at Vallejo, CA 60 Dutch, 17 exh, 8 nm
 JUDGE: Millie Palmbad - BOB tort SD Jill Giron - BOS steel JB Sara Nimitz -
 21 blk Shields - 12 blue Schettler - 5 choc nm - 9 tort Giron - 5 steel
 Nimitz - 8 gray Cook - POINTS: Sara Nimitz 159; Jim Schettler 144; Jill Giron
 102; Katie Mead 89; Colleen Maddox 42; Chris Maddox 38; Jack Cook 36; Greg
 Shields 30;
 May 31, 1986 Inland Empire RBA at Spokane, WA 35 Dutch, 13 exh, 5 nm
 JUDGE: Scott Williamson - BOB gray SD Jan & Russ Coffelt - BOS tort SB Della
 McDaniel - 14 blk SD Coffelt - 7 blue Farmer - 4 choc Gregg - 5 tort McDaniel
 5 gray Coffelt - POINTS: Heather McLeod 80; Jan & Russ Coffelt 65; Lloyd
 Gray 42; Della McDaniel 11; Brent Regarty 22; Jerry Emerson 20; Farmer 12

June 1, 1986 Polk Co RBA at Adel, IA 24 Dutch, 7 exh, 4 nm
 JUDGE: Bob Koch - BOB blk JD Andrew VanDee - BOS blue SB Susan Phillips -
 6 blk VanDee - 8 blue Phillips - 5 choc VanDee - 2 tort nm - 1 steel Phillips
 2 gray VanDee - POINTS: Andrew VanDee 99; Susan Phillips 54; Martha Jackson 24
 June 1, 1986 Lorain Co R&CBA at Wellington, OH 58 Dutch, 9 exh, 2 nm
 JUDGE: Harold Krahl - BOB tort SB Jack Wireman - BOS blue SD Lois Kemp -
 24 blk Kemp - 12 blue Smith - 6 choc Stinehaifer - 7 tort Wireman - 8 steel
 Nixon - 1 gray Stockmaster - POINTS: Larry Nixon 264; Jim Smith 141; Mike Stine
 haifer 57; Jack Wireman 99; Brad Stockmaster 53; David Kemp 32; Wilford
 & Lois Kemp 115
 June 1, 1986 Mohawk Valley RBA at Morrisville, NY 43 Dutch, 9 exh, 1 nm
 JUDGE: ? - BOB blue SB Steve & Rebecca Schilling - BOS blk JD Tom Stevens -
 23 blk ? - 7 blue ? - 4 choc ? - 7 tort ? - 2 gray ? - POINTS: S&R Schilling
 372; Tom Stevens 70; Charles Collins 57; Howard French 40; Dave Wickham 34;
 Gail Kaiser 21; Noel Palmer 12; Bill & Donna Fulkers 6
 June 1, 1986 Kankakee Valley RBA at Kankakee, IL 42 Dutch, 9 exh, 2 nm
 JUDGE: Dick Gehr - BOB blk JB Everburg & Stearns - BOS blk JD Everburg &
 Stearns - 14 blk Everburg & Stearns - 11 blue Cunningham - 6 choc Riya -
 2 tort Gisbelhauser - 9 gray Gisbelhauser - POINTS: Everburg & Stearns 162;
 Richard Riya 104; J&C Cunningham 92; W.L. Gisbelhauser 87; Jim Anderson 51;
 Art Osmon 36; Bruce Ryan 36
 June 1, 1986 York Co RBA at Acton, ME 7 Dutch, 2 exh, 1 nm
 JUDGE: Henry Connors - BOB blk SD Cindy Thurston - BOS blk SB Thurston - POINTS:
 2 blk Thurston - 2 blue Thurston - 1 choc Thurston - 2 tort Thurston - POINTS:
 Cindy Thurston 47
 June 1, 1986 Wolf River RC at Shawano, WI 9 Dutch, 5 exh, 3 nm
 JUDGE: Fidelis Stienhoff - BOB blue JB Karen Falt - BOS blk SD nm - 6 blk
 nm - 3 blue Falt - POINTS: Karen Falt 25; Sharon Flat 18
 June 1, 1986 Teays Valley RBA at Chillicothe, OH 47 Dutch, 5 exh, 1 nm
 JUDGE: Phil Macy - BOB blk SD Tammy Wise - BOS gray SB Norman McNary -
 15 blk Wise - 14 blue Fisher - 9 choc Wise - 4 tort Bogan - 3 steel McNary -
 2 gray McNary - POINTS: Kevin & Vicki Bogan 308; Norman McNary 120; Tammy Wise
 154; Dorinda Fisher 34
 June 1, 1986 South Jersey R&CBA at Mullica Hill, NJ 59 Dutch, 10 exh, 2 nm
 JUDGE: Gemlene Lorenz - BOB blk SB Kelly Hegedus - BOS blk SD Mark Pecaric -
 25 blk Hegedus - 12 blue Esterly - 13 choc Riche - 5 tort Pecaric - 1 steel
 Esterly - 3 gray Esterly - POINTS: Mark Pecaric 305; Sandi Merritt 132;
 Steven Esterly 111; Kelly Hegedus 83; Ellen Roche 86; Dearna Roche 66;
 Bernie Roche 28; Thos. Geisweigt 34
 June 7, 1986 Rushmore RP at Buffalo Gap, SD 9 Dutch, 5 exh, 5 nm
 June 7, 1986 Rogue Valley RP at Grants Pass, OR 12 Dutch, 4 exh, 2 nm
 JUDGE: Ralph Patterson - BOB tort JD Jill Pfaff - BOS blk SB nm - 5 blk
 nm - 2 blue Pfaff - 1 choc nm - 3 tort Pfaff - 1 gray Eaton - POINTS: Jill
 Pfaff 62; Beth Eaton 6
 June 7, 1986 Brookings RC at Brookings, SD 22 Dutch, 8 exh, 5 nm
 JUDGE: Rodney Dannehl - BOB blue SB John Bach - BOS blk SD Bach - 3 blk
 Bach - 6 blue Bach - 1 choc Niebuhr Bros - 11 tort Niebuhr - 1 gray nm - POINTS
 John Bach 102; Niebuhr Bros 72; L&L Larson 56
 June 7, 1986 Montana RBA at Chinook, MT 17 Dutch, 6 exh, 5 nm
 JUDGE: Eunita Boatman - BOB tort SB nm - BOS blk SD nm - 7 blk nm - 1 blue
 nm - 9 tort nm - POINTS: Ellis Houseman 6
 June 8, 1986 Northwest Dutch RC at Cornelius, OR 26 Dutch, 5 exh, 1 nm

JUDGE: Harold Guthrie - BOB choc SD Vern & Marti Dill - BOS tort SB nm - 11 blk nm - 12 blue Dill - 6 choc Dill - 4 tort nm - 4 gray Dill - POINTS: Betty Storey 125; Vern & Marti Dill 123; G&F Halsey 55; Tracy Busema 38; Debbie Pliipponen 14; Paul Dill 12; Karl Ennis 11 **BEST 4 CLASS**

June 28, 1986 Arizona Mountain RF at Prescott, AZ 31 Dutch, 5 exh, 4 nm
 JUDGE: Mike Lovejoy - BOB blue JD Charles Christ - BOS blk SB Christ - 14 blk Christ - 8 blue Christ - 8 choc Christ - 1 gray nm - POINTS: Charles Christ 369

June 29, 1986 All Iowa Fair at Cedar Rapids, IA 28 Dutch, 4 exh, 1 nm
 JUDGE: Gary Grimm - BOB blk SB Eric Mixdorf - BOS blue JD Mixdorf - 11 blk SB Mixdorf - 7 blue Mixdorf - 3 choc VanDee - 4 tort Mixdorf - 3 gray Mixdorf - POINTS: Eric Mixdorf 184; Andrew VanDee 100; Dennis McAtee 46; Cliff Amdahl 9

June 28, 1986 San Fernando Valley R&CB at Burbank, CA 22 Dutch, 4 exh, 1 nm
 JUDGE: Doug Tschantz - BOB blk SD Barbara Sowers - BOS blk SB Soers - 11 blk Sowers - 2 blue Burgett - 5 choc Sowers - 3 tort nm - POINTS: Barb Sowers 124 Sandra Burgett 58; Jacqueline Duncan 34

May 3, 1986 Richland Co RBA at Mansfield, OH 1 Dutch, 1 nm

May 3, 1986 Burny Buddies 4-H Youth RC at N. Easton, MA 26 Dutch, 9 m, 6nm
 JUDGE: Paul Jurgelonis - BOB blue SB Darlene Zelinski - BOS blue JD Zelinski - 3 blk JD nm - 11 blue SB Zelinski - 10 tort SB Winship - 2 steel SB Coelho - POINTS: Darlene Zelinski 102; Jennifer Winship 72; Jaimie Anne Coelho 28

May 4, 1986 Channelview RBA at TX 4 Dutch, 1 exh, 1 nm

May 4, 1986 Essex Co R&CB at Topsfield, MA 11 Dutch, 4 exh, 3 nm
 JUDGE: Arthur Burke - BOB blk SD Tina Calvani - BOS tort SB Calvani - 4 blk SD Calvani - 1 choc SD nm - 6 tort SB Calvani - POINTS: Tina Calvani 73*

May 4, 1986 Mid Ohio RBA at London, OH 4 Dutch, 1 exh
 JUDGE: Clarence Vallance - BOB blk SB Schroeder's - BOS gray JD Schroeder's - 1 blk SB Schroeder's - 1 blue SB Schroeder's - 1 steel JB Schroeder's - 1 gray JD Schroeder's - POINTS: Schroeder's Rabbitry 30

May 4, 1986 North East Ohio RF at Jefferson, OH 2 Dutch, 2 exh, 2 nm

May 10, 1986 Western Michigan RB at Hudsonville, MI 3 Dutch, 3 exh, 2 nm
 JUDGE: Willis Bouwkamp - BOB blk SB nm - BOS none - 1 blk SB nm - 1 blue SB Kimmy Martini - 1 tort SB nm - POINTS: Jimmy Martini 6 **BEST IN SHOW**

May 10, 1986 Copperas Cove RF '86 at Copperas Cove, TX 11 Dutch, 7 exh, 6 nm
 JUDGE: Tex Thomas - BOB blue JB nm - BOS blk JD nm - 5 blk JB nm - 2 blue JB nm - 3 choc SD nm - 1 tort SD nm - POINTS: Ryan Bayer 6

May 10, 1986 Southern Indiana RBA at Charlestown, IN 2 Dutch, 2 exh, 2 nm

May 10-11, 1986 California State R&C Conv at CA 25 Dutch, 14 exh, 9 nm
 JUDGE: Ken Van Dine - BOB tort JD Jill Giron - BOS steel JB Sara Nimitz - 12 blk SD nm - 8 blue SB nm - 1 choc SD Giron - 1 tort JD Giron - 2 steel JB Nimitz - 1 gray SD nm - POINTS: Sara Nimitz 100; Jill Giron 86; Mark Dykes 15; James Siebe 6

YOUTH SHOW REPORTS

JUDGE: Marlon Kolb - BOB tort JD Jill Pfaif - BOS gray SB Vicki Hertel - 5 blk Hertel - 5 blue Hertel - 1 choc Parmer - 5 tort Pfaif - 3 steel Hertel - 7 gray Hertel - POINTS: Vicki Hertel 142; Jill Pfaif 125; Greg Hickmott 33; G&M Parmer 32

June 8, 1986 Connecticut RBA at Durham, CT 33 Dutch, 6 exh, 3 nm
 JUDGE: Lewis McGuire - BOB blk JB Sandi Merritt - BOS blue JD Merritt - 10 blk Merritt - 10 blue Fine - 6 choc Merritt - 6 tort Shaw - 1 gray nm - POINTS: Sandi Merritt 165; Deborah Zimmer 85; Hilary Shaw 24

June 14, 1986 Itasca RBA at Grand Rapids, MN NO DUTCH SHOWN

June 14, 1986 Keystone NC at Lebanon Co Fair 41 Dutch, 8 exh, 1 nm
 JUDGE: Jim Graybeal - BOB steel JB Steven Esterly - BOS blk SD Esterly - 9 blk Esterly - 10 blue Pace - 16 choc Pace - 3 tort Esterly - 1 steel Esterly - 2 gray Esterly - POINTS: Steven Esterly 233; Gary Pace 146; Deanna Riche 57; Gale Shaeffer 32; Donna Fulkles 23; Bernie Riche 21; Thos. Geisweil 12

June 14, 1986 Panhandle RBA at Amarillo, TX 5 Dutch, 2 exh, 2 nm

June 14, 1986 Washington State RB at WA 36 Dutch, 12 exh, 4 nm
 JUDGE: Jen Carr - BOB blk JD Heather McLeod - BOS blk SB Donna Peterson - 18 blk McLeod - 1 blue Peterson - 4 choc Gregg - 3 tort McDaniel - 10 gray Coffelt - POINTS: Lloyd Gregg 121; Heather McLeod 102; Jan Coffelt 80; Donna Peterson 60; Mike Edris 34; Della McDaniel 31; D. Coplen 15; Kelly Norwood 10

June 14, 1986 Broome Co RB at Ithaca, NY 40 Dutch, 10 exh, 5 nm
 JUDGE: Al Butler - BOB tort SD Steve Schilling - BOS blk JB Schilling - 26 blk Schilling - 6 blue Wickham - 6 choc nm - 4 tort Schilling - 1 gray Schilling - POINTS: Steve Schilling 312; Charles Collins 86; Gail Kaiser 48; David Wickham 42

June 15, 1986 Mad River Valley R&CB at Urbana, OH 80 Dutch, 10 exh, 1 nm
 JUDGE: Dick Allebach - BOB choc JD Jack Wireman - BOS gray SB Jim Smith - 30 blk Smith - 18 blue Hooper - 12 choc Wireman - 9 tort Smith - 8 steel Smith - 5 gray Smith - POINTS: Jim Smith 348; Kevin Hooper 22; Kevin Bogan 240; Jack Wireman 195; Tammy Wise 64; Ralph Howes 48; Myron Stineshelfer 46; Robert Shaw 37

June 15, 1986 Western Maine RBA at Fryeburg, ME 15 Dutch, 5 exh, 2 nm
 JUDGE: Arthur Burke - BOB blk SD Tina Calvani - BOS blk SB Cindy Thurston - 4 blk Calvani - 2 blue Thurston - 8 tort Calvani - 1 steel nm - POINTS: Irene DaForte 58; Tina Calvna 50; Cindy Thurston 49

June 15, 1986 Washington State RB at WA 36 Dutch, 18 exh, 8 nm
 JUDGE: Scott Williamson - BOB blk JD Mike Edris - BOS tort SB Della McDaniel - 14 blk Edris - 5 blue Cople - 4 choc Gregg - 3 tort McDaniel - 10 gray Coffelt - POINTS: Mike Edris 96; Jan Coffelt 90; Lloyd Gregg 63; Della McDaniel 52; Donna Peterson 21; Debbie Coplen 20

June 15, 1986 Riverside Co RBA at Panama, CA 31 Dutch, 6 exh, 3 nm
 JUDGE: Don Lovejoy - BOB tort SD Sandra Burgett - BOS blk JB nm - 13 blk JD Duncan - 6 blue Burgett - 7 choc Burgett - 3 tort Burgett - 2 gray Sowers - POINTS: Sandra Burgett - 146; Barb & Geo Sowers 119; Jackie Duncan 45

June 22, 1986 Waterloo Area RBA at Waterloo, IA 33 Dutch, 6 exh, 2 nm
 JUDGE: Randy Waggoner - BOB tort JD Eric Mixdorf - BOS tort JD Mixdorf - 10 blk Mixdorf - 10 blue McAtee - 4 choc VanDee - 6 tort Mixdorf - 3 gray McAtee - POINTS: Eric Mixdorf 204; Andrew VanDee 86; Dennis McAtee 74; Cliff Amdahl 26

June 28, 1986 Ann Arbor RBA at Saline, MI 37 Dutch, 10 exh, 3 nm

May 11, 1986 Zanesville RB at Xanesville, OH 18 Dutch, 3 exh, all members
JUDGE: Barb Butler - BOB blue SB Jim Smith - BOS blk SD Jim Smith - 6 blk SB
Smith - 3 blue SB Smith - 3 choc SB Beister - 2 steel JB Schroeder - 4 gray JB
Schroeder - POINTS: Jim Smith 103; Schroeder Rabbitory 32; Beth Beister 24

May 11, 1986 Miss-Ala-Rash RBA at Peru, IN 8 Dutch, 1 exh, 1 memb
JUDGE: Phil Macy - BOB blue SD David M. Jones - BOS blk SB Jones - 6 blk SB
Jones - 1 blue SD Jones - 1 gray SD Jones - POINTS: David M. Jones 104

May 11, 1986 Cumberland Co RBA at Cumberland Fairgrounds 10 Dutch, 3 exh, 2 nm
JUDGE: Arthur Burke - BOB blk SD Tina Calvani - BOS tort SB Calvani - 5 blk
D Calvani - 5 tort SB Calvani - POINTS: Tina Calvani 53

May 17, 1986 Saginaw Valley R&CBA at Saginaw, MI 28 Dutch, 5 exh, 3 nm
JUDGE: Willie Davis - BOB blue SB Robert Royce, Jr. - BOS steel JD nm -
blk JB Minter - 5 blue SB Royce - 6 choc SD Royce - 3 tort SB Minter -
steel JD nm - 3 gray SD nm - POINTS: Robert Royce, Jr. 122; Amy Minter 78

May 17, 1986 St. Joe Valley R&C at Argos, IN 13 Dutch, 4 exh, 1 nm
JUDGE: George Ralser - BOB choc SB nm - BOS blk SD David M. Jones - 8 blk SD
Jones - 1 blue SD Jones - 2 choc SB nm - 2 gray SD Jones - POINTS: David M.
Jones 104; Dawn Broeker 24; Ben Wallbank 16

May 22, 1986 Suburban Twins RC at Farmington, MN 13 Dutch, 5 exh, 2 nm
JUDGE: Cornall Addison - BOB blk JB Jeff Chirpich - BOS blue JD Kirsten Bengston
blk JB Chirpich - 4 blue JD Bengston - 3 choc JB Kerrigan - 1 tort JB
Bengston - 1 gray SD Bengston - POINTS: Jeff Chirpich 43; Kirsten Bengston 43;
Jan Kerrigan 18

May 17, 1986 Berks Co R&CBA at Leesport, PA 18 Dutch, 10 exh, 9 nm
JUDGE: Jack Pugh - BOB blk SB Kelly Lynn Hegedus - BOS blue JD nm -
blk SB Hegedus - 5 blue SB nm - 2 choc SD nm - 2 tort SB nm - 2 gray SB nm -
POINTS: Kelly Lynn Hegedus 36

May 18, 1986 Eastern Iowa RBA at Palo, IA 11 Dutch, 5 exh, 3 nm
JUDGE: Keith McVinch - BOB blk SB Susan McAtee - BOS blk JD nm - 7 blk SB
nm - 2 steel JB nm - 1 gray SD Bengston - 1 gray SB Bengston - POINTS: Susan
Bengston 34; Susan McAtee 41

May 18, 1986 New England Dutch RC at Auburn, MA 31 Dutch, 8 exh, 3 nm
JUDGE: Elgie Szozezanek - BOB blk JD nm - BOS blue SB Darlene Zelinski -
6 blk JD Calvani - 7 blue SB Zelinski - 5 choc SB Paskiewicz - 10 tort JD
nm - 2 steel JB nm - 1 gray SD Paskiewicz - POINTS: Jennifer Winship 102;
Tina Calvani 58; Darlene Zelinski 47; Melissa Arslan 33; Allison Paskiewicz 24

May 18, 1986 Illiana RBA at Terre Haute, IN 15 Dutch, 3 exh, 2 nm
JUDGE: Caleb Thomas - BOB blue SD David Jones - BOS blk SB Jones - 7 blk SB
Jones - 1 blue SD Jones - 3 choc SB nm - 2 tort JD nm - 2 gray SD Jones -
POINTS: David M. Jones 120

May 18, 1986 Illinois RBA Youth at Bloomington, IL 27 Dutch, 5 exh, 1 nm
JUDGE: Billy Dodge - BOB choc SB Jeanette Demers - BOS blk SD Demers -
10 blk SD Demers - 7 blue SB Demers - 1 choc SB Demers - 6 tort JB Meyer -
2 steel SD Demers - 1 gray SD Leonard - POINTS: Jeanette Demers 148; Eric
Meyer 115; Donald Leonard 44; Danny Easter 17

May 24, 1986 Huntington RBA at Huntington, IN 45 Dutch, 8 exh, 3 nm
JUDGE: Harry Rice - BOB blk SB Todd Uran - BOS blk SD Uran - 21 blk SB Uran -
9 blue SB nm - 4 choc SB Uran - 8 tort SB Uran - 1 steel SB Myers - 2 gray
JD Uran - POINTS: Todd Uran 27; Bob & Mike Myers 136; Eric Meyer 87;
David M. Jones 58; Dawn Broeker 25

May 24, 1986 Lake Shore RBA at Muskegon, MI 16 Dutch, 9 exh, 9 nm

May 25, 1986 Huron Co RB at Norwalk, OH 30 Dutch, 3 exh, 1 nm
JUDGE: Willie Davis - BOB blk JD Jim Smith - BOS blue SB Smith - 11 blk JD
Smith - 3 blue SB Smith - 6 choc SD Smith - 3 tort SB Smith - 3 steel JB
nm - 4 gray SB Smith - POINTS: Jim Smith 243; Theresa Popik 38

May 25, 1986 Kingston 4-H Youth at Kingston, MA 22 Dutch, 6 exh, 2 nm
JUDGE: Manuel Carauo - BOB tort SD Tina Calvani - BOS tort SB Jennifer Winship
4 blk SD Calvani - 6 blue SD Winship - 10 tort SD Calvani - 2 steel SB Coelho
POINTS: Jennifer Winship 102; Tina Calvani 96; Darlene Zelinski 26; Jaime
Coelho 20

May 31, 1986 Lorain Co R&C at Willington, OH 36 Dutch, 5 exh, 1 nm
JUDGE: Willie Davis - BOB blk JD Jim Smith - BOS blue SB Jim Smith -
9 blk JD Smith - 6 blue SB Smith - 6 choc SD Smith - 5 tort JB Stockmaster -
5 steel JD Stockmaster - 4 gray SB Smith - POINTS: Jim Smith 205; Brad Stock-
master 58; David Kemp 38; Theresa Popik 35

May 31, 1986 4-H Hare Raisers at Whitman, MA 19 Dutch, 5 exh, 3 nm
JUDGE: Alan Platt - BOB blk SD Darlene Zelinski - BOS tort SB Jennifer Winship
4 blk SD Zelinski - 9 blue SD Zelinski - 6 tort SB Winship - POINTS: Jennifer
Winship 84; Darlene Zelinski 61

June 1, 1986 Kankakee Valley RBA at Kankakee, IL 24 Dutch, 6 exh, 2 nm
JUDGE: Richard Gehr - BOB blk SD Eric Meyer - BOS steel SB Jeanette Demers
10 blk SD Meyer - 6 blue JD Leonard - 1 choc SB Demers - 4 tort SB Meyer -
2 steel SB Demers - 1 gray SD Leonard - POINTS: Eric Meyer 114; Jeanette Demer
89; Donald Leonard 33; Danny Easter 21

June 1, 1986 York Co RBA at Acton, ME 15 Dutch, 5 exh, 1 nm
JUDGE: Henry Connors - BOB blk SB Chris Gurney - BOS blk JD nm - 7 blk SB
Gurney - 1 blue SB Coelho - 6 tort SD Calvani - 1 steel SB Coelho - POINTS:
Tina Calvani 52; Jaime Coelho 32; Chris Gurney 27; Robin Thurston 16

June 1, 1986 Wolf River RC at Shawano, WI 35 Dutch, 11 exh, 7 nm
JUDGE: Fidelis Steinhoff - BOB blk SB nm - BOS blue JD nm - 24 blk SB nm -
6 blue SB nm - 7 choc JD nm - 3 steel JD Wendorff - 5 gray SB nm - POINTS:
Steve Busche 54; Corey Brenner 36; Jenny Wendorff 18; Julia Schmoll 18

June 15, 1986 Western Maine RBA at Fryeburg, ME 3 Dutch, 2 exh, 1 nm
JUDGE: Henry Connors - BOB blk SB Chris Gurney - BOS blk SD Robin Thurston
3 blk SB Gurney - POINTS: Robin Thurston 13; Chris Gurney 15

June 21, 1986 4-H Carrot Crunchers RC at MA 30 Dutch, 7 exh, 4 nm
JUDGE: Manuel Cavacco - BOB blk JD nm - BOS blk SB Darlene Zelinski -
10 blk JD nm - 11 blue SB Zelinski - 1 choc JB nm - 7 tort SD nm - 1 steel
SD nm - POINTS: Darlene Zelinski 85; Jennifer Winship 48; Jaime Coelho 28

Redwood Acres Fair at Eureka, CA 10 Dutch, 4 exh, 4 nm
June 28, 1986 Ann Arbor RBA at Saline, MI 76 Dutch, 18 exh, 10 nm
JUDGE: Willis Bouwkamp - BOB choc SB Todd Uran - BOS choc SD Robert Royce -
25 blk SD Myers - 14 blue JB Dill - 15 choc SB Uran - 11 tort SB Smith -
6 steel SD Smith - 5 gray SB nm - POINTS: Jim Smith 201; Todd Uran 191;
Robert Royce, Jr. 121; Amy Minter 117; Bob Myers 106; Brad Stockmaster 50;
Tammy Schwartzkopf 16; Jimmy Martini 11

June 28, 1986 Carver Cranberry Bunnies at Wareham, MA 37 Dutch, 7 exh, 4 nm
JUDGE: Paul Jurgelonis & Manuel Cavacco - BOB blue JD nm - BOS blk JB Darlene
Zelinski - 10 blk JD nm - 20 blue SD Winship - 1 choc JB nm - 7 tort SD nm -
2 steel SD nm - POINTS: Jennifer Winship 163; Darlene Zelinski 77; Jaime Coelho
54

UPCOMING SHOWS

(Page 1)

*NOTE There are two (2) sections of October 1986 "Upcoming Shows": Our file will only hold a certain amount of characters per "Directory File Name" -- therefore, the October '86 shows were divided into two different files.

- OCTOBER 1986 (first file)
- 10/01/86 Ventura County Fair at Ventura California ARBA# AB1230 ADRC# 46450
- Elmer Paquette 374 Acacia Road Santa Paula Ca 93868
- 10/06/86 Aberdeen Area R.C. at Aberdeen South Dakota ARBA# BATA ADRC# 45828
- Jack Heyd 485 N. Washington Aberdeen SD 57401
- 10/04/86 Auto City RBA at Selma Michigan ARBA# AB866 ADRC# 46750
- Angie Ellis 21224 Sherman Southfield MI 48034
- 10/05/86 Auto City RBA at Galling Michigan ARBA# ABY360 ADRC# 46934
- Angie Ellis 21224 Sherman Southfield MI 48034
- 10/04/86 Central Alabama RBA at Montgomery Alabama ARBA# AB1384 ADRC# 47120
- Sue Brannon 631 Greenridge Rd. Montgomery AL 36109
- 10/04/86 Eastern Colorado RC at Lakewood Colorado ARBA# AB1383 ADRC# 47450
- Judith Falzer 2655 N. Water Ave. Denver CO 80219
- 10/04/86 Eastern R & CFA at Gathersburg Maryland ARBA# AB1811 ADRC# 47740
- Jessie Lavender 1786 Bayshore Beach Rd. Pasadena MD 21122
- 10/04/86 Eastern R & CFA at Gathersburg Maryland ARBA# ABY433 ADRC# 47214
- Mattie Lovewacker 1786 Bayshore Beach Rd. Pasadena MD 21122
- 10/04/86 Evergreen RBA at Emuclean Washington ARBA# AB137 ADRC# 45750
- Jim Allen 2501 Sevedge Ct. N.E. Olympia WA 98584
- 10/04/86 Kaw Valley RC at Gardner Kansas ARBA# AB881 ADRC# 46480
- Clarence W. Lindsey 316 South Mainville Olathe KS 66061
- 10/04/86 Kentucky State RBA at Elizabethtown Kentucky ARBA# AB498 ADRC# 44920
- F.L. Cooner 6210 Yellow Pine Dr. Louisville KY 40229
- 10/04/86 Kentucky State RBA at Elizabethtown Kentucky ARBA# ABY185 ADRC# 44924
- F.P. Cooner 6210 Yellow Pine Dr. Louisville KY 40229
- 10/04/86 Mid South RBA at Memphis Tennessee ARBA# AA989 ADRC# 45740
- Sonja Pendley 3629 Kipling Ave. Memphis TN 38128
- 10/04/86 Northern Idaho RBA at Cesar d Alene Idaho ARBA# AB1432 ADRC# 47280
- Kerge Goodbold 3901 Moccasin Rd. Coeur d Alene Id 83514
- 10/04/86 Pearl River County RBA at Piquette Mississippi ARBA# AB1461 ADRC# 45740
- Pauline Banks 6801 Wooded Acres Rd Ocean Springs Ms 39564
- 10/04/86 Rabbit Prok. of San Mateo Co. at Daly City California ARBA# AB1881 ADRC# 46210
- Judy Evans 487 Hillcrest Rd. San Carlos Ca 94078
- 10/04/86 Rabbit Prok. of San Mateo Co. at Daly City California ARBA# ABY427 ADRC# 46214
- Judy Evans 487 Hillcrest Rd. San Carlos Ca 94078

NOTE*-Any ADRC sanction with an '0' after the ADRC sanction number is an open sanctioned show; a 'y' denotes a youth sanction.

- 10/04/86 Treasure Coast R & CC at Ft. Pierce Florida ARBA# BA49 ADRC# 49750 (Page 2)
- Susan Beary 18668 Pinewood Trail Jupiter FL 33478
- 10/04/86 Yadkin Valley RBA at Mocksville North Carolina ARBA# AB1291 ADRC# 47110
- Charles Wagner 318 Meadowood Circle Kannapolis NC 28081
- 10/05/86 Cuyahoga R & CBA at Bersa Fairgrounds ARBA# Z4924 ADRC# 49738
- Edward Young 6180 Hillside Rd Independence Oh 44131
- 10/25/86 Evergreen RBA at Emuclean Washington ARBA# AB138 ADRC# 45740
- Mary Sandelin 14187 S.E. 259th. Pl. Kent WA 98042
- 10/05/86 Miami Valley RC at Greenville Ohio ARBA# AB355 ADRC# 43328
- Phoebe Mundehank 4339 Jordan Rd. Lewisburg Oh 45338
- 10/05/86 Miami Valley RC at Greenville Ohio ARBA# ABY124 ADRC# 43324
- Phoebe Mundehank 4639 Jordan Rd. Lewisburg Oh 45338
- 10/05/86 Monroe County RBA at Waterloo Illinois ARBA# AB975 ADRC# 46850
- Tony Kleiboecker PO Box 121 Sreese IL 62238
- 10/11/86 Texas State 4-H Youth at Dallas Texas ARBA# ABY466 ADRC# 46334
- Rozella Salzman 918 E. Monica Dr. Garland TX 75841
- 10/11/86 Three Corners R.C. at Hutchinson Kansas ARBA# AB1261 ADRC# 47820
- Barbara Addison Box 358 St. John KS 67574
- 10/11/86 Central Oregon Coast RBA at Newport Oregon ARBA# BA411 ADRC# 47420
- Carol Edwards 582 Aspen St. N.W. Toledo Or 97391
- 10/11/86 Iowa State Dutch R.C. at Waterloo Iowa ARBA# B978 ADRC# 47790
- Eric Mixdorf 6389 Strayer Rd. Rt.2 Cedar Falls Ia 50613
- 10/11/86 Mid-Counties RBA at Frankfort Indiana ARBA# AB1887 ADRC# 47436
- Janet L. Robbins R.R.#4 Box 175A Frankfort In 46041
- 10/11/86 Mid-Counties RBA at Frankfort Indiana ARBA# ABY449 ADRC# 47434
- Janet L. Robbins R.R.#4 Box 175A Frankfort In 46041
- 10/11/86 Midland R & C Co-Op at Midland Michigan ARBA# AB1154 ADRC# 47230
- Lisa Van Noye 9548 Harrison Ave. Midland MI 48622
- 10/11/86 Midland R & C Co-Op at Midland Michigan ARBA# ABY584 ADRC# 47234
- Lisa Van Noye 9548 Harrison Ave. Midland MI 48622
- 10/11/86 National Capital RCA at Montgomery County Fairgrounds ARBA# ABY494 ADRC# 47844
- Tom Weatherly Rt. 616 Box 60 Calverton Va 22816
- 10/11/86 San Juan RBA at Farmington New Mexico ARBA# AB1188 ADRC# 47840
- Lora Blankinship Box 739 Flora Vista NM 87417
- 10/11/86 San Juan RBA at Farmington New Mexico ARBA# ABY588 ADRC# 47844
- Lora Blankinship Box 739 Flora Vista NM 87417
- 10/11/86 Tom Green Co. R.C. at San Angelo Texas ARBA# B457 ADRC# 49920
- Frances Trotter 6449 Navaajo Rd. San Angelo TX 76901
- 10/11/86 Tom Green Co. R.C. at San Angelo Texas ARBA# B459 ADRC# 49924
- Frances Trotter 6449 Navaajo Rd. San Angelo TX 76901

10/11/86 Tri Valley RBA at Pleasanton California ARBA# AB785 ADRCA# 47670 (Page 3)
 Barbara Talley 8780 Fair Oaks Rd. Tracy Ca 95376
 ARBA# AB680 ADRCA# 44950
 10/12/86 Bald Eagle R.B. & F. at Hill Hall Pennsylvania
 Connie Probst RD#1 Box F-307 Lock Haven Pa 17445
 10/12/86 Bailo & Ho Co RCBA at West Friendship Maryland ARBA# 28861 ADRCA# 46220
 Bernadette Wilson 989 Old New Windsor Pike Westminster Md 21157
 10/12/86 Bay State RBA at Bridgewater Massachusetts ARBA# ABY385 ADRCA# 4623Y
 Pauline C. Schofield 479 Collins Corner Rd. North Dartmouth Ma 02747
 10/12/86 Bay State RBA at Bridgewater Massachusetts ARBA# AB916 ADRCA# 46230
 Pauline C. Schofield 479 Collins Corner Rd. North Dartmouth Ma 02747
 10/12/86 Central Oregon Coast RBA at Newport Oregon ARBA# AA412 ADRCA# 47480
 Carol Edwards 342 Aspen St. N.W. Toledo Or 97391
 10/12/86 Lambton County RBA at Bridgen Ontario Canada ARBA# AB1398 ADRCA# 49930
 J. Gayle Farr Box 1626 - Petrolia Ont. Canada N0M 1R0
 10/12/86 Minnebago Forest RC at Rockford Illinois ARBA# AB228 ADRCA# 47640
 Ron Holmgren 1387 Union St. Belvidere Il 61088
 10/12/86 Minnebago Forest RC at Rockford Illinois ARBA# ABY72 ADRCA# 4764Y
 Ron Holmgren 1387 Union St. Belvidere Il 61088
 10/18-19/86 North Is. RBA/State Fair of Tx. at Dallas Texas ARBA# AB1142 ADRCA# 46800
 Joy Robinson 316 Crandall Hill Dr. Crandall Tx 75114
 10/18/86 Berks County R & CBA at Leesport Pennsylvania ARBA# ZB1889 ADRCA# 44630
 Linda Geisweil RD B - 101 Sinking Spring Pa 19688
 10/18/86 Cape Cod R & CB at Wareham Massachusetts ARBA# ABY415 ADRCA# 4646Y
 Pamela Hoors 65 Fosdick Rd. Carver Ma 02338
 10/18/86 Cape Cod R & CB at Wareham Massachusetts ARBA# AB966 ADRCA# 46460
 Janet Hoors 65 Fosdick Rd. Carver Ma 02338
 10/18/86 Central Michigan RBA at East Lansing Michigan ARBA# ABY292 ADRCA# 4592Y
 Catherine M. Messer 407 Meadowview Dr. St. Johns Mi 48879
 10/18/86 Central Michigan RBA at East Lansing Michigan ARBA# AB737 ADRCA# 45920
 Catherine M. Messer 407 Meadowview Dr. St. Johns Mi 48879
 10/18/86 Hudson Valley RBA at Yorktown New York ARBA# AB299 ADRCA# 47680
 Linda Dziedzic Peekskill Hollow Rd. Carmel NY 10512
 10/18/86 Lake County RBA at Lakeport California ARBA# AB1028 ADRCA# 46240
 Paul G. Sies 5262 Wilson Rd. Kelseyville Ca 95451
 10/18/86 Penn-Ohio Rabbit Breeders at Mahoning County Fairgrounds ARBA# ZB738 ADRCA# 46620
 Terry Schisler 10915 Akron-Carfield Rd. Ellsworth Oh 44816
 10/18/86 South Dakota RBA at Pipestone Minnesota ARBA# BA977 ADRCA# 49970
 Linda Sunding R.R.5 Box 376 Huron SD 57358
 10/18/86 Southern Ontario RBA at Ancaster Ontario Canada ARBA# AB452 ADRCA# 46850
 Faye Brewer R.R.#2 Cayuga Ontario Canada N8A 1E8

NOTE Any sanction with an "0" after the ADRCA sanction number is an open sanctioned show;
 a "Y" denotes a youth sanction

UPCOMING SHOWS

10/19/86 Eastern Dutch Rabbit Fanciers at Westlaster Maryland ARBA# AB1354 ADRCA# 47190
 Bale Shaffer 3868 Lineboro Rd. Manchester Md 21102
 10/19/86 Marion Co. RBA at Salem Illinois ARBA# ABY151 ADRCA# 4522Y
 Tony Kleiboecker PO Box 121 Breese Il 62238
 10/19/86 Marion Co. RBA at Salem Illinois ARBA# AB421 ADRCA# 45220
 Tony Kleiboecker PO Box 121 Breese Il 62238
 10/19/86 Mark Twain County RBA at Ithaca New York ARBA# AB1138 ADRCA# 46280
 Suzanne Westbrook R.R.1 Box 589 Erin NY 14838
 10/19/86 Red Cedar RBA at Rice Lake Wisconsin ARBA# AB742 ADRCA# 46420
 Luella Calkins 3861 Runway Ave. Eau Claire WI 54703
 10/19/86 Red Cedar RBA at Rice Lake Wisconsin ARBA# ABY292 ADRCA# 4642Y
 Luella Calkins 3861 Runway Ave. Eau Claire WI 54703
 10/19/86 Tuscarawas County RBA at New Philadelphia Ohio ARBA# ZB568 ADRCA# 44630
 Deborah A. Brown Rt.#1 Co.Rd.89 Box 1375 New Philadelphia Oh 44663
 10/19/86 Tuscarawas County RBA at New Philadelphia Ohio ARBA# ZB7210 ADRCA# 4483Y
 John Dinger Box 193 Co.Rd. 83 New Philadelphia Oh 44663
 10/24-28/86 Arizona State Fair at Phoenix Arizona ARBA# AB1066 ADRCA# 49910
 Janet Doumert/Arizona State Fair P.O. Box 6715 Phoenix Az 85805
 10/24-28/86 Arizona State Fair at Phoenix Arizona ARBA# ABY455 ADRCA# 4991Y
 Janet Doumert/Arizona State Fair P.O. Box 6715 Phoenix Az 85805
 10/25/86 El Paso Rabbit Assn. at El Paso Texas ARBA# AB1269 ADRCA# 49840
 Virginia Akin 6120 Quail El Paso Tx 79924
 10/25/86 Southside Virginia RB at Hopewell Virginia ARBA# AB1228 ADRCA# 46340
 Julia Powell 14925 River Rd. Chesterfield Va 23832
 10/25/86 Vermont State R & CBA at Berlin Vermont ARBA# ABY412 ADRCA# 4705Y
 Patricia Barberi 3315 R.D.-4 Montpelier Vt 05602
 10/25/86 Vermont State R & CBA at Berlin Vermont ARBA# AB962 ADRCA# 47050
 Patricia Barberi 3315 R.D.-4 Montpelier Vt 05602
 10/25/86 Wichita Valley RBA at Wichita Falls Texas ARBA# AB418 ADRCA# 46340
 Walter Gibson 2944 Lavelle Wichita Falls Tx 76388
 10/26/86 High Desert RBA at Apple Valley California ARBA# AB593 ADRCA# 47380
 Jacqueline Duncan 9945 Hawthorne Ave. Hesperia Ca 92345
 10/26/86 Mesilla Valley RBA at El Paso Texas ARBA# BASS ADRCA# 49830
 Baisy L. Corgan 3738 N. Hwy. 85 Las Cruces NM 88805

NOTE Any sanction with a "0" after the ADRCA sanction number is an open sanctioned show;
 a "Y" denotes a youth sanction.

UPCOMING SHOWS

OCTOBER 1986 (second file)

10/04/86 N. Dak. RBA at Aberdeen South Dakota ARBA# AB1338 ADR# 58150
 Thomas Norman Box 60 Ronango ND 58471

10/04/86 Palo Pinto RBA at Mineral Wells Texas ARBA# AB1231 ADR# 58160
 Joy Lang 1215 S.W. 2nd. Ave. Mineral Wells Tx 76867

10/04/86 Space Coast RBA at Ft. Pierce Florida ARBA# BA145 ADR# 58380
 Kathy Mazzillo 821 Mercado Ave. Orlando Fl 32807

10/05/86 Indian Hills R & CBA at Fairfield Iowa ARBA# AB1033 ADR# 58370
 Sharon Johnson R.R.2 Box 488 Fairfield Ia 52556

10/05/86 Indian Hills R & CBA at Fairfield Iowa ARBA# ABY443 ADR# 5837Y
 Sharon Johnson R.R.2- Box 488 Fairfield Ia 52556

10/05/86 S.E. Iowa RBA at Fairfield Iowa ARBA# AB1179 ADR# 58090
 Ja Oldenburg P.O. Box 8 Lockridge Ia 52635

10/05/86 Western Maine RBA at Fryeburg Maine ARBA# AB935 ADR# 58000
 Ruby McLaren RFD 1 Box 700 Harrison Me 04040

10/05/86 Western Maine RBA at Fryeburg Maine ARBA# ABY396 ADR# 5800Y
 Ruby McLaren RFD 1 Box 700 Harrison Me 04040

10/11/86 Aroostook County RBC at Presque Isle Maine ARBA# BA125 ADR# 58120
 Carol Archer 37 Fort St. Presque Isle Me 04769

10/11/86 Central Louisiana RBA at Alexandria Louisiana ARBA# AB1156 ADR# 58080
 Richard T. Smith 1211 Lancaster Dr. Alexandria La 71303

10/11/86 Goldleaf RBA at Danville Virginia ARBA# AB1085 ADR# 58370
 Angela Ligon Rt. 6 Box 520 Danville Va 24541

10/11/86 Iowa State RBA at Waterloo Iowa ARBA# AB371 ADR# 58110
 Rosemary Ridgeway 3844 Cedar Terrace Waterloo Ia 50702

10/11/86 Iowa State RBA at Waterloo Iowa ARBA# ABY221 ADR# 5811Y
 Rosemary Ridgeway 3844 Cedar Terrace Waterloo Ia 50702

10/11/86 New York State RBA at Morristown New York ARBA# BA166 ADR# 58100
 Shirley Meger 3226 Porter Ctr. Rd. Youngstown NY 14174

10/11/86 Paulding RBA at Paulding Ohio ARBA# AB376 ADR# 58280
 Joyce Russell R.5 St. Rt. 17568 Defiance Oh 43512

10/11/86 Paulding RBA at Paulding Ohio ARBA# ABY131 ADR# 5828Y
 Joyce Russell R.5 St. Rt. 17568 Defiance Oh 43512

10/11/86 Searchers Feather Fur & B.C. at Green Lake Wisconsin ARBA# ABY199 ADR# 5814Y
 Lori Heimer Rt.1 Box 328A Fox Lake WI 53933

10/11/86 Southwest Florida RBA at Naples Florida ARBA# BA177 ADR# 58190
 Barbara Brown 1240 Hingo Dr. Naples Fl 33964

10/11/86 Southwest Florida RBA at Naples Florida ARBA# BA176 ADR# 58180
 John Logsdon P.O. Box 9705 Naples Fl 33941

10/18/86 Az. Conference of R.C. at Tucson Arizona ARBA# BA84 ADR# 5843D
 Wenton Carlton 14150 N. Coma Dr. Tucson Az 85741

10/18/86 Az. Conference of R.C. at Tucson Arizona ARBA# BA442 ADR# 5843Y
 Wenton Carlton 14150 N. Coma Dr. Tucson Az 85741

10/18/86 Oklahoma RBA at Oklahoma City Oklahoma ARBA# BA745 ADR# 5817Y
 Nyta Cabaniss P.O. Box 542 McCloud Ok 74851

10/18/86 Oklahoma RBA at Oklahoma City Oklahoma ARBA# BA93 ADR# 58170
 Nyta Cabaniss P.O. Box 542 McCloud Ok 74851

10/19/86 Carroll Co. Youth RC at Westminister Maryland ARBA# ABY611 ADR# 5813Y
 Judy Wilson 989 Old New Windsor Pt. Westminister Md 21157

10/26/86 Maine State RBA at Waterville Maine ARBA# BA129 ADR# 5842D
 Cindy Thurston RFD #2 Box 588 Sanford Me 04073

10/26/86 Maine State RBA at Waterville Maine ARBA# BA751 ADR# 5842Y
 Kelly Hubert RFD #2 Roberts Road Bowdoinham Me 04008

NOVEMBER 1986

11/03-06/86 63rd. ARBA Convention at Columbus Ohio ARBA# AB480 ADR# 43330
 Joyce Judy 10 Central Ave. Mechanicsburg Oh 43044

11/03-06/86 63rd. ARBA Convention at Columbus Ohio ARBA# ABY179 ADR# 4333Y
 Joyce Judy 10 Central Ave. Mechanicsburg Oh 43044

11/08/86 Ontario Council Of Rabbit Clubs at Seaforth Ontario Canada ARBA# AB1399 ADR# 47580
 Joyce E. Dickey R.R.#1 Centralia Ont. Canada N8M 1K0

11/08/86 Shasta County RBA at Red Bluff California ARBA# AB1372 ADR# 47460
 Heather Dyer 4111 Brentwood Way Redding Ca 96002

11/09/86 Eastern Iowa RBA at Palo Iowa ARBA# AB776 ADR# 58210
 L.A. Seaholm 289 7th. Ave. N. Mount Vernon Ia 52314

11/09/86 Eastern Iowa RBA at Palo Iowa ARBA# ABY320 ADR# 5821Y
 L.A. Seaholm 289 7th. Ave. N. Mount Vernon Ia 52314

11/15/86 Jacksonville RBA at Green Cove Springs Florida ARBA# AB1406 ADR# 47880
 Marsha Null 4183 Everett Ave. Middleburg Fl 32068

11/15/86 Southern Arizona RBA at Tucson Arizona ARBA# AB724 ADR# 58220
 Deana Wagner 1984 W. Placita Collee Tucson Az 85784

11/15/86 Sunflower Rabbit Club at El Dorado Kansas ARBA# AB475 ADR# 47490
 C.L. Walker R.1 Box 297 Mulvane Ks 67110

UPCOMING SHOWS

11/16/86 Carroll County R & CBA at Westminister Maryland ARBA# ZB1072 ADR# 46550
 Pale Shaffer 3060 Lineboro Rd. Manchester Md 21102
 11/16/86 Kiam Egyptian RBA at Carbondale Illinois ARBA# AB64 ADR# 46650
 Art Gasser R.R.#1 Welsh Il 62297
 11/16/86 Kiam Egyptian RBA at Carbondale Illinois ARBA# ABY29 ADR# 4665Y
 Art Gasser R.R.#1 Welsh Il 62297
 11/16/86 Lancaster Tri County R & CF at Circleville Ohio ARBA# AB535 ADR# 44500
 Marvin Chidick 6719 Farlton Rd. Circleville Oh 43113
 11/16/86 Ohio State Dutch Club at Circleville Ohio ARBA# AB1247 ADR# 46430
 Larry Nixon 20201 Pitts Rd. Wellington Oh 44090
 11/16/86 Whiteside County RB at Rock Falls Illinois ARBA# AB353 ADR# 45000
 Richard Londo 1015 Hilltop Dr Morrison Il 61270
 11/16/86 Whiteside County RB at Rock Falls Illinois ARBA# ABY122 ADR# 4500Y
 Richard Londo 1015 Hilltop Dr Morrison Il 61270
 11/22/86 Briar Patch R.C. at Midland Texas ARBA# AB1420 ADR# 47700
 Gary Dunkerson #80 Ranger Est. Midland Tx 79701
 11/22/86 Indianapolis Rabbit Fanciers at Greenfield Indiana ARBA# ABY293 ADR# 4716Y
 Sherie Raisor 1309 S.R. 42 Noorseville In 46158
 11/22/86 Indianapolis Rabbit Fanciers at Greenfield Indiana ARBA# AB743 ADR# 47160
 Sherie Raisor 1309 S.R. 42 Noorseville In 46158
 11/22/86 San Antonio Youth RBA at San Antonio Texas ARBA# BAYS ADR# 5025Y
 Damon Fleury 5429 Boatman Kirby Tx 78219
 11/22/86 Sierra Nevada RBA at Reno Nevada ARBA# 84153 ADR# 50320
 Sue Maddox 1531 Del Rosa Way Sparks Nv 89431
 11/22/86 Southern Maryland RBA at Mechanicsville Maryland ARBA# AB1145 ADR# 49860
 Lois Ann Mancer Rt.2 Box 232 Pomfret Md 20645
 11/23/86 Jackson Purchase RBC at La Center Kentucky ARBA# AB1184 ADR# 49770
 Virginia Duke Rt.1 Box 278 Fulton Ky 42041
 11/23/86 Lehigh Valley R & CBA at Leesport Pennsylvania ARBA# AB1479 ADR# 47310
 Tina Radelaine R.D.1 Box 316-6 Copley Pa 18037
 11/23/86 Madison County RC at Anderson Indiana ARBA# AB601 ADR# 49760
 Marcia Neely R.R.1 Box 76 Pendleton In 46064
 11/23/86 Madison County RC at Anderson Indiana ARBA# AAY236 ADR# 4976Y
 Marcia Neely R.R.1 Box 76 Pendleton In 46064
 11/23/86 No. Central Missouri RC at Holt Missouri ARBA# AB594 ADR# 50440
 Lucille Perryman R.#2 Box 1058 Excelsior Springs Mo 64024
 11/23/86 River Bend RBA at Rock Island Illinois ARBA# AB419 ADR# 45350
 Marilyn J. Cox R.R.#3 Box 239 Muscatine Ia 52761
 11/23/86 San Gabriel Valley R.A. at Pomona California ARBA# AB1042 ADR# 47690
 Leslie Dowd 1632 Reserve St. Pomona Ca 91766

11/23/86 Tri County RBA at Waukesha Wisconsin ARBA# AB1288 ADR# 50240
 Nancy Beatty P.O. Box 403 Rochester Wi 53167
 11/23/86 Tri County RBA at Waukesha Wisconsin ARBA# ABY551 ADR# 5024Y
 Nancy Beatty P.O. Box 403 Rochester Wi 53167
 11/29/86 Chickaski Valley RBA at Harper Kansas ARBA# AB1047 ADR# 50230
 Larry Walker Rt.2 Box 44 Harper Ks 67858
 11/29/86 Mid-Tex RBA at Cameron Texas ARBA# AB561 ADR# 47540
 Carroll S. Hooks Rt.1 Box 192 Moody Tx 76557
 11/29/86 Mid-Tex RBA at Cameron Texas ARBA# ABY217 ADR# 4754Y
 Jeannette Crow 4722 Florida Waco Tx 76705
 11/29/86 Tidewater RBA at Chesapeake Virginia ARBA# AB1101 ADR# 50410
 Tricia Linton 2633 Seven Eleven Road Chesapeake Va 23320
 12/06-07/86 No. State Rabbit Prod. at Sedalia Missouri ARBA# AB1068 ADR# 46260
 Sue Gillispie HCR 71 Box 110 Vienna Mo 65502
 12/06-07/86 No. State Rabbit Prod. at Sedalia Missouri ARBA# ABY461 ADR# 4626Y
 Sue Gillispie HCR 71 Box 110 Vienna Mo 65502
 12/06/86 Northern California RBA at Sacramento California ARBA# AB1005 ADR# 46870
 Linda C. Drake P.O. Box 323 Newcastle Ca 95658
 12/06/86 Richmond R.B.A. at Ashland Virginia ARBA# ABY13 ADR# 47070
 Nancy Butler Rt.B Box 845 Glen Allen Va 23060
 12/07/86 California Dutch RC at Hayward California ARBA# AB1211 ADR# 46250
 Elaine Paquette 334 Alacalia Rd. Santa Paula Ca 93060
 12/07/86 Rabbiters R & CF at Somerset New Jersey ARBA# AB1020 ADR# 46060
 Judy Engel 408 Ocean Ave. Sea Bright NJ 07780
 12/13/86 Cape Fear RBA at Raeford North Carolina ARBA# AB1411 ADR# 49880
 Fred Hague Route 7 Box 166-N Fayetteville NC 28306
 12/13/86 Montgomery Co. RBA at Conroe Texas ARBA# AB1260 ADR# 50260
 Colleen Vaughn 39 Shore Drive Splendora Tx 77372
 12/13/86 Montgomery Co. RBA at Conroe Texas ARBA# ABY534 ADR# 5026Y
 Janelle Hinesley Rt. 13 Box 2139 Conroe Tx 77303

NOTE* Any sanction with an "0" after the ADRC sanction number is an open sanctioned show;
 a "y" denotes a youth sanction.

UPCOMING SHOWS

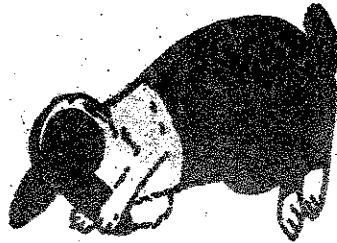
JANUARY 1987

01/10/87 Cajun Power Rabbit Fanciers at Houma Louisiana AREA# AB8895 ADRCA# 45650
 Bobbie Sandie 1413 Lee Avenue Houma La 70308
 01/31/87 Bayou Area Rabbit Fanciers at New Iberia Louisiana ARBA# AB1250 ADRCA# 50480
 Debbie Breaux Rt. 8 Box 680 New Iberia La 70550

FEBRUARY 1987

02/07-08/87 Southwestern Expo & F.S.S. at Fort Worth Texas ARBA# AB1185 ADRCA# 46670
 W.R. Watts Jr. P.O. Box 150 Fort Worth TX 76101
 02/15/87 Peoria Area RBA at Peoria Illinois ARBA# AB1162 ADRCA# 46630
 Helen Miller Box 25 Maquon Il 61458
 02/15/87 Peoria Area RBA at Peoria Illinois ARBA# ABY493 ADRCA# 4663Y
 Helen Miller Box 25 Maquon Il 61458
 02/21-22/86 Houston Livestock Show at Houston Texas ARBA# AB1305 ADRCA# 46660
 Bertha Llewellyn 5536 Grand Lake Bellaire Tx 77401
 02/21/87 Louisiana State RBA at Jena Louisiana ARBA# BA52 ADRCA# 49850
 Judy Whitfield Rt. 2 Box 1645 Sulphur La 70663
 02/22/87 Livingston County RBA at Odell Illinois ARBA# AB1812 ADRCA# 46870
 Deborah Ochs R.R. 2 Box 110 Milford Il 60953
 02/22/87 Livingston County RBA at Odell Illinois ARBA# ABY434 ADRCA# 4687Y
 Deborah Ochs R.R. 2 Box 110 Milford Il 60953
 02/22/87 State Line RBA at Bowling Green Ohio ARBA# ABY526 ADRCA# 4753Y
 Janet Ery 12365 Ford Highway Clinton MI 49236
 02/22/87 State Line RBA at Bowling Green Ohio ARBA# AB1248 ADRCA# 47530
 Janet Ery 12365 Ford Highway Clinton MI 49236
 02/28/87 Flint River RBA at Albany Georgia ARBA# BA90 ADRCA# 49940
 Lesley Haynie P.O. Box 3522 Albany Ga 31706
 02/28/87 Flint River RBA at Albany Georgia ARBA# BA91 ADRCA# 49950
 Lesley Haynie P.O. Box 3522 Albany Ga 31706
 02/28/87 The Sandhills RBA at Seaside Texas ARBA# BA8 ADRCA# 50270
 Marsha Ribble Rt. 1 Box 19A Seminole Tx 79360

*NOTE Any sanction with an "0" after the ADRCA sanction number is an open sanctioned show;
 a "Y" Denotes a youth sanction.



Feb 22-87

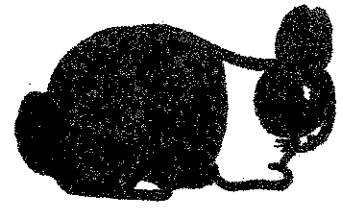
L AND L JOHNSONS' 2/87
...DUTCH PERIOD...
712 NORTH ST. HALSTEAD, KS. 67056

NO SHIPPING

ANTHONY MICALLEF 9/87
8172 Riverdale
Dearborn Heights, Michigan 48127

"DUTCH"

BLACK - BLUE - CHOCOLATE - TORT



"CARL DECKER" 6/90
935 Clay Avenue
Stroudsburg, PA 18360
BLACK BLUE CHOCOLATE

PUERTO RICO 10/87
Granja De Conejos Cinco

Adalih Bermudiz
RR 1 Box 6643
Guayama P.R. 00654-9607

DUTCH BLACK - BLUE No Shipping

THOMAS C. HADAWAY 10/86
510 Cannon St., Chestertown, Md. 21620
Phone: (301) 778-3673

BLACKS "MARSHLAND DUTCH" BLUES

Kirsten's Dwarfs and Dutch 12/86
Kirsten Bengtson
Rt 1 box 95
Lewiston, MN 55952



YOU CAN'T BEAT THE DUTCH

ROHRER'S DUTCH RABBITRY 6/87
DAN ROHRER, JR.
16 Rosewood Drive
Hagerstown, Md. 21740

"Fancier of Blacks & Blues"
"No Shipping"

YOU CAN'T BEAT THE DUTCH 8/87
BACH'S DUTCH DUTCH EXCLUSIVELY
JOHN BACH Ph: (612)
BOX 428 329-8216
Renville, Minnesota 56284



BARTON'S BUNNIES 10/87
RT. 2, CARROLL, OHIO 43112
DUTCH DUTCH DUTCH

ROLLING ACRE RABBITRY 4/87
JOYCE JEANINE SWARTZ
12944 Cadmus Road
Clayton, Michigan 49235
"ALL COLORS" DUTCH

DOUBLE DUTCH RABBITRY 6/87
BOB & SANDI SIPKEMA
Rt. 6, Box 212
Rensselaer, IN 47978
CHOCOLATES "DUTCH" BLACKS

JACK & CHARLOTT COLBORN 4/88
1015 S. Allen
Chanute, Kansas 66720
Dutch - Blacks, Chocolates, & Blues
Californians - Florida Whites



Vanher Rabbitry

8/86

VICKI HERTEL - ARBA JUDGE

* GREY * STEEL * BLACK * BLUE *

IBOB AT LAST 9 SHOWS WITH 6 DIFFERENT RABBITS!

WE ALSO RAISE A FEW TOP
SPOTS AND BROKEN SATINS

VISITORS ALWAYS WELCOME



THE HERTELS
CHARLIE, VICKI, CHRIS, & STEPHANIE
ROUTE 2, BOX 238H
FOREST GROVE, OREGON 97116
(503) 357-8863

R & K RABBITRY

10/87

REGGIE & KEVIN SHULL

R.R. #2 Becker Rd.

Woodburn, IN 46797

PHONE (219) 632-4265

1985 NDS B.O.B.

"DUTCH"
BLACKS - BLUES - CHOCOLATES



LAWRENCE D. HYER

10/86



"QUALITY DUTCH"
ALL COLORS

4719 - 47TH ST.
LUBBOCK, TEXAS 79414

PHONE: (806) 792-9654

JUDGES AND REGISTRARS

\$4.00



L. A. BENGTON

12/86

R.1, BOX 95
LEWISTON, MN 55952
PH. 507-864-2103



ARBA JUDGE

DICK GEHR

10/86

190 N. First Ave.

Coal City, IL 60416

Phone: 815-634-4788

ARBA REGISTRAR & JUDGE (#533)



4/87

TOP OF THE HILL RABBITRY

DUTCH, REX & SILVERS

Alison Paskiewicz
500 Great Road
Littleton, MA 01460

YOUTH BREEDER



12/89

GORDY & MARILYN HAMERSLEY

"L'IL RED DUTCH HUTCH"

24931 Woodfield School Road
Gaithersburg, Maryland 20879

D U T C H

BLACKS - BLUES - CHOCOLATES



NOR-DICK RABBITRY 10/86

Norma Hart & Dick Gehr



190 N. First Ave.
Coal City, IL 60416
Phone: 815-634-4788

DUTCH: ALL COLORS

*Dick - ARBA JUDGE

YOUTH DUTCH FOR SALE!

DONALD J. LEONARD

206 N. WALBASH

ODELL, IL 60460

PHONE: (815) 998-2127



DUTCH: BLACK, BLUE

SILVER MARTEN: BLACK

SHADAN Farms

4/87

Danny & Sharon Young

DUTCH

We are fairly new at rabbit raising but are striving to have some of the best!

BOB & BOS at Missouri State Fair '85
Best & Best Opp Black - Best Opp Choc.
Best Blue - Best Opp Tort

Many Best & Best Opp in Blacks, Blues, Chocolates & Torts at the '85 Shows
We have a lot of real nice show & breeding stock for sale.

We also raise some top Satins - Blacks, Siamese & Brokens
Also Netherland Dwarfs - Blacks, Siamese, Agouti, REW, & Himmie

We also raise AKC Miniature Daschunds: Black, Tan, & Red * Cockers: Red & Buff
Ferrets * Registered Appaloosa Horses

We will ship and guarantee satisfaction or your money back.

Sharon Young
Rt. 1
Utica, Kansas 67584
Phone: 913-391-2308
VISITORS WELCOME!!

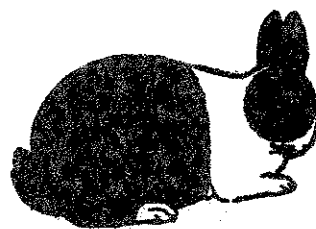
8/88

A. S. DUTCHERY

SINCE 1949

BREEDER, FANCIER, SHOW

A.D.R.C. MEMBER 27 YEARS



BILL GEITZENAUER
68 VALLEY BROOK RD.
LONG VALLEY, NJ 07853

(201) 876-3838

2/87

DUTCH

DUTCH

DUTCH

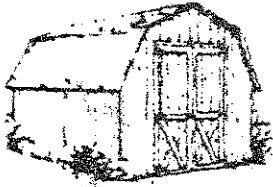
WISE AND SHIRLEY WABBITS

2520 WESTPARK WAY CIRCLE

EULESS, TEXAS 76040

817/540-0142

BUS: 817/540-0331

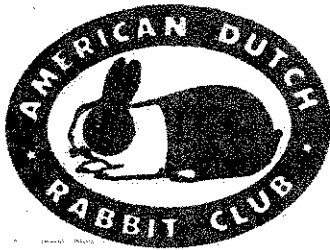


PEDIGREED BREEDING & SHOWSTOCK

BOS 1985 ARBA CONVENTION

RAY LYNN SHIRLEY

JACK, BARBARA, TOMMY JACK, AMY & WOODY WISE

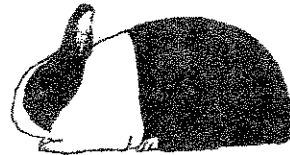


YOU CAN'T BEAT THE DUTCH

BERGENE RABBITRY

2/87

Bob, Char, Scott & Renee Bergene
14130 E. 63rd St. South
Derby, KS 67037 (316) 776-2751



TOP QUALITY DUTCH

"All Colors"

Also breeders of: Holland Lop, Palomino,
New Zealand White & American Chinchilla

LUCKY

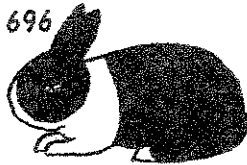
10/86

LOCKSTAR DUTCH

RABBITRY

ART & MEG NOLAN
Bill Lockwood, Consultant

2137 Mastin Avenue
Seaford, Virginia 23696
Ph: (804) 898-4217



"BLACK DUTCH"

PHIL SHIVERS

BLACK DUTCH

10/86

"WHERE GRAND CHAMPIONS ARE BORN"

BOB-1984-85 MN State Convention
Best Black 1985 Iowa Dutch Show



PHIL SHIVERS
3625-35 Ave. So.
Minneapolis, MN 55406
Phone: 612-724-8308

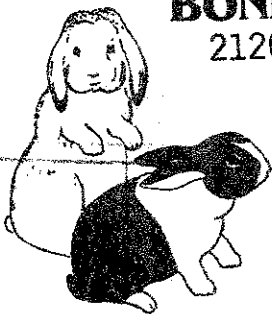
BREEDING STOCK AVAILABLE WHEN PRE-ARRANGED

BOND'S BUNNIES

21200 SW 190 AVENUE

MINI LOPS

DUTCH



**Bob & Betty
Bond**

MIAMI, FL 33187

**Wooden shoe
Dutchery**

QUALITY BLACKS & BLUES

715-677-4532



227 State Street
P.O. Box 97
Rosholt, WI 54473

SHERYL KAMINSKI

4/87

PUBLICITY ORDER FORM

Name _____
 Address _____ State _____ Zip _____
 City _____

NAME OF ITEM	HOW MANY	SIZE	COLOR	PRICE
Name & Address Book	\$ 1.25			
Pedigree Book	3.50			
Arm Patches: Bk, Bl, Choc.	3.00			
Dutch Decals: Inside/Outside	1.25			
Judging Dutch Books	1.25			
Scratch Pads	1.25			
Split Ring Key Fob (Leather)	2.00			
"New" Metal Key Ring	4.00			
Caps-Dutch Motto: Bk, Blue	5.50			
"New" Belt Buckle	8.00			
"New" Tankard	10.00			
Dutch Label Pins: Bl, Bk, Ch, 2.00				
"New Style" Label Pin	4.00			
Tote Bag (w/emblem)	6.50			
Blue, Red, Yellow, Orange, Beige				
Plastic Tumblers (w/emblem)	7.75			
Set of 6 - White OR 1.50 each				
Jackets - Lined	37.00			
Royal Blue or Maroon				
Jackets - Unlined	30.00			
Royal Blue or Maroon				
Childs T Shirt S/M/L	5.50			
(Dutch & Motto) White or Blue				
Infants T-Shirt 5mo - 9mo	4.25			
(Dutch & Motto) "limited quantity"				
Adult T-Shirt S/M/L/XL	5.50			
(Dutch & Motto) White				
				TOTAL

NOTE: Save money on these items by arranging to pick your order up at a show that the Butlers are attending! No postage fees would have to be paid!

Mail this blank along with your check or money order to:
 Barb & Al Butler
 4310 Rickville Dr. SW
 Canton, Ohio 4706

Phone (216) 484-1977
 Please make checks payable to: ADRC - Publicity

* * * * *

SHOW SANCTION APPLICATION

Date of Show _____ ARBA show Code # Open _____
 Sponsoring Club # Youth _____
 Location of Show _____
 Show Secretary _____
 Address _____ State _____ Zip _____
 City _____
 Enclose \$8.00 for Open sanction and \$5.00 for a Youth sanction and mail to:
 A.D.R.C. Norma Hart, Sec'y., 190 N. First Ave., Coal City, IL. 60416
 PLEASE APPLY FOR SANCTION AT LEAST 60 DAYS BEFORE SHOW DATE IF POSSIBLE!
 THANK YOU!

ADRC MEMBERSHIP FEES

\$5.00 Single Youth Membership (under 18 yrs. of age) \$7.00 Single Adult
 \$9.00 Husband/Wife \$16.75 Single ADRC/ARBA Combination Membership
 \$21.75 Husband/Wife ADRC/ARBA Combination Membership
 \$9.75 Youth ADRC/ARBA Combination Membership
 *NOTE/Canadian Memberships must include an additional \$5.00 (in U.S. Funds)
 to cover mailing expenses.
 *NOTE/Foreign Memberships must include an additional \$10.00 (in U.S. Funds)
 to cover mailing expenses.

"MEMBERSHIP APPLICATION"

I hereby make application for membership in the American Dutch Rabbit Club, Inc., and enclose the amount for dues and fees. I agree, if accepted, to abide by the constitution and By-Laws of this organization and to further the interest of the American Dutch Rabbit Club in every way possible.

Name _____ Date _____ Adult _____ Youth _____ Age _____
 Street Address _____
 Box Number _____ State _____ Zip _____
 City _____
 New _____ Renewal _____

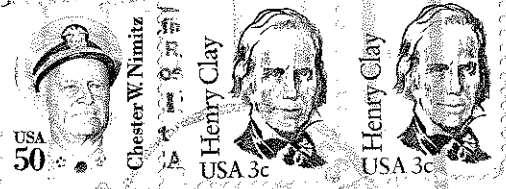


Recommended By _____
 Norma Hart, Secretary-Treasurer
 C/O American Dutch Rabbit Club
 190 North First Avenue
 Coal City, Illinois 60416

FIRST CLASS Dutch Reporter mailing is available for an additional \$5.00 per year!

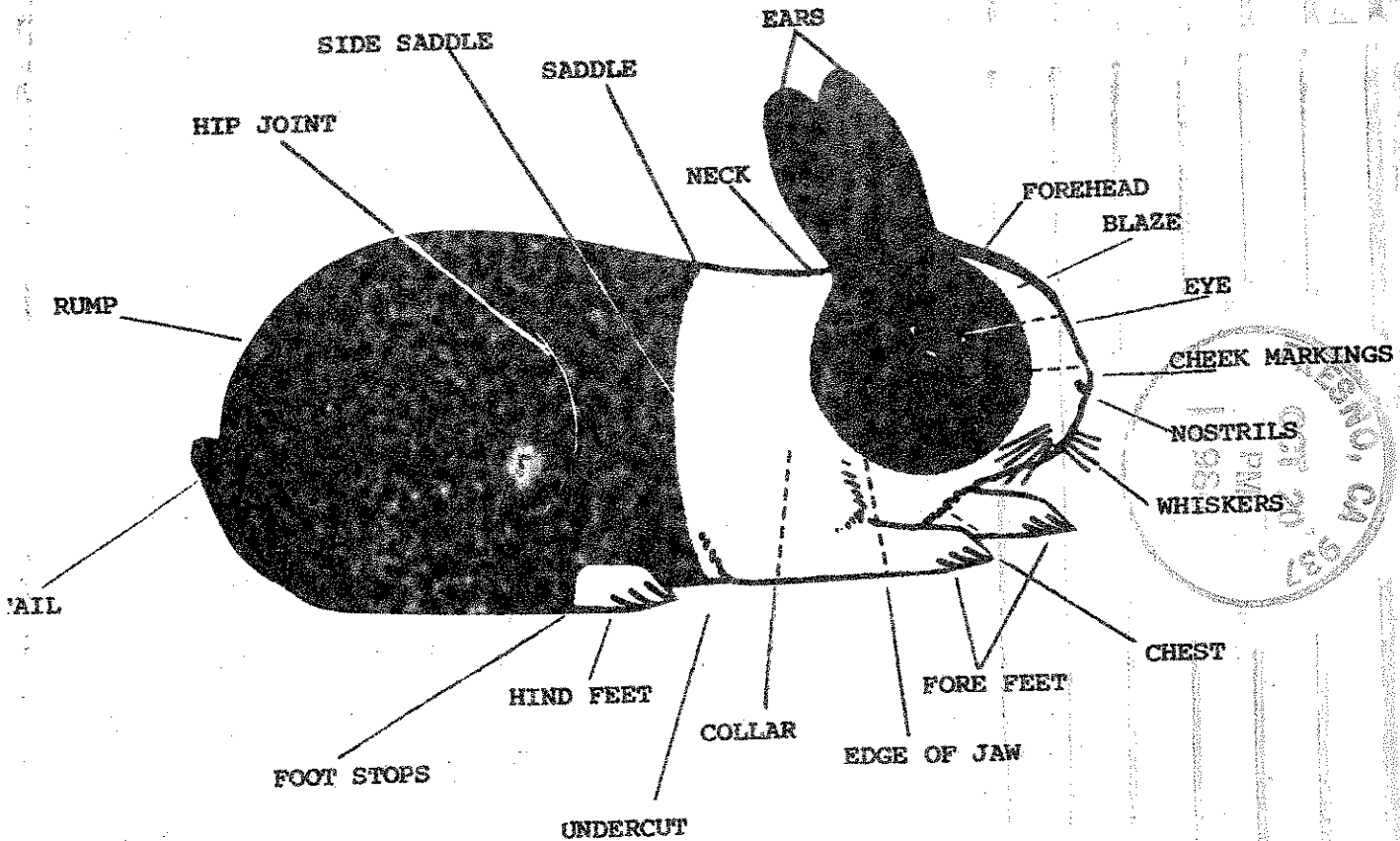
THE AMERICAN DUTCH RABBIT CLUB, INC.

DIANNE WILLIAMSON
6588 E. ASHLAN
CLOVIS, CA 93612



TYPE **FIRST CLASS**

TO BE COBBY IN TYPE, COMPACT IN FORM AND LIMB. GOOD DUTCH TYPE CONSISTS OF A NICELY ROUNDED BACK, BEGINNING ALMOST IMMEDIATELY BEHIND THE HEAD AND PROGRESSING OVER THE SHOULDERS, LOIN AND RUMP TO TAIL. SHOULDERS SHOULD BE ROUNDED AND SLIGHTLY NARROWER AND LOWER THAN HIPS. RIB SPREAD SHOULD BE SO THAT THE SIDE LINES CARRY STRAIGHT THROUGH FROM THE SHOULDERS TO THE HIPS. A GOOD DUTCH SHOULD HAVE NICELY ROUNDED HIPS, VERY SMOOTH, ROUNDED UNDER VERY GRADUALLY AND SMOOTHLY. THE DUTCH SHOULD RETAIN THE COBBY, STOCKY APPEARANCE WHETHER IT WEIGHS 3½ POUNDS OR 5½ POUNDS.



WEIGHT AND CONDITION

IDEAL WEIGHT - SENIOR BUCKS AND DOES, 4½ POUNDS. REGISTRATION WEIGHT - SENIOR BUCKS AND DOES, OVER 6 MONTHS OF AGE, 3½ TO 5½ POUNDS. FLESH FIRM AND SOLID, SKIN TO BE TIGHTLY DRAWN OVER THE FLESH, MAKING THE COAT TIGHT AND HARD TO GRASP.

Life
Jack Wireman 12/86
5475 Seeman St. S.W.
Navarre Oh 44662

