



JULY - AUGUST
1990

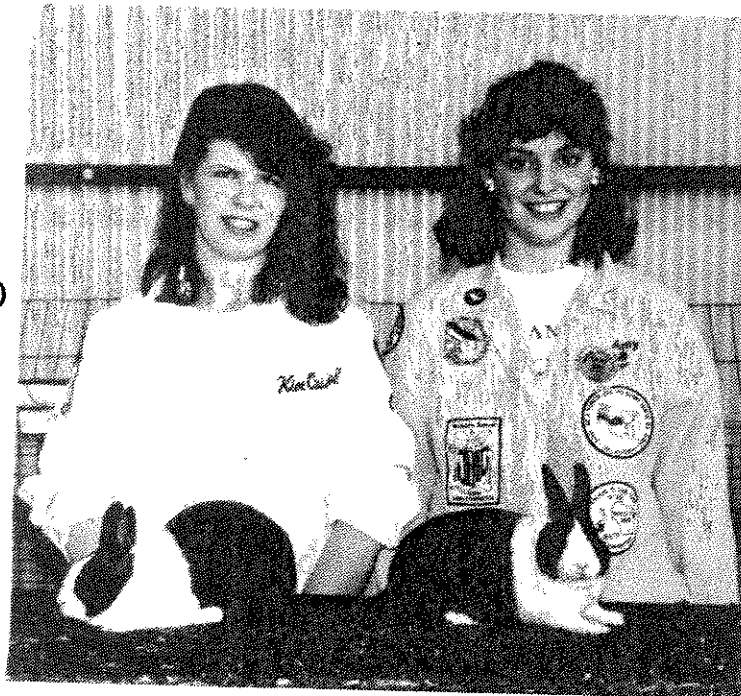
The Dutch Reporter



YOUTH

990 NDS B.O.B. (right)
Amy Minter, Mi.
Black Jr. Buck

990 NDS B.O.S. (left)
Kim Cassell, Ma.
Blue Sr. Doe



DEVOTED TO THE INTERESTS OF THE
BREEDERS OF DUTCH,

America's Finest Rabbit



American Dutch Rabbit Club

1990 Nat Dutch Show Youth Report

DUTCH

WAYNE MACKINNON
146 Field St.
Taunton, Ma. 02780
(617) 823-7953

BLACK BLUE
TORTOISE

You Can't Beat The Dutch



BACH'S DUTCH
DUTCH EXCLUSIVELY

John Bach
Box 428
Renville, Mn. 56284
(613) 329-8216

DAFFY DILL'S RABBITRY

Vern, Marti, & Paul D
71048 Aldrich Lake R
Sturgis, Mi. 49091

Best Opp. Gray - 87
Best Steel Jr. - 87 A
Best Steel - 88 NI
Best Opp. Gray - 88

WE WILL SHIP

EICH'S RABBITRY

Top Quality Dutch

FOR SALE

National Winners for
over 35 years

Black-Blue-Choc-Torts
WE WILL SHIP

Roger and Bonnie Eich
Box 502 Dallas Center, Ia.
(515) 992-3466 50063

Mark L. Pecaric

991 Klockner Road
Trenton, N.J. 08619

DUTCH ALL COLORS
Specializing in
Black - Blue - Tortoise
NO SHIPPING PLEASE

Best Dutch Display 1985
Best Dutch Display 1987
B.O.S. 1987
at A.R.B.A. Convention

DUTCH HUTCH RABBITRY

Grand Champion
Bloodlines

BLACKS & BLUES

Rick Lehmann
17100 Wabash St.
Yorba Linda, Ca. 921
(714) 996-5326

KARL EHNIS, JR.

767 E. Five Mile Rd.
Whitmore Lake, Mi. 48189
(313) 449-4577

ARBA JUDGE

Black

Blue



Choc.

Tort.

YOU

CAN'T

BEAT

THE

DUTCH

**LITTLE CITY FAR
DUTCH**

"Bred for TYPE"



Laurie Lettire
161 N. Milton Ave
Campbell, Ca. 950
(408) 866-6620

WAYZATA DUTCH

Thomas B. Buell
142 Chevy Chase Drive
Wayzata, Mn. 55391
(612) 473-0372

Black and Blue

Foundation Stock

L I F E M E M B E R
" YOU CAN'T BEAT THE DUTCH "

The Lord Nelson Strain
John L. Nelson
R.R. 3 Box 1114
Crete, Il. 60417

Since 1941

B.O.B. - 1978 NDS-Ohio & 1989 NDS Seattle
Best Fur - 78, 80, 81, 83, 88 NDS



PRESIDENT

Wenton Carlton (90)
14150 N. Hawkeye Dr.
Tucson, Az. 85741
(602) 297-2681

VICE-PRESIDENT

Bill Reid (91)
22 Shadowbrook Ln.
Hurst, Tx. 76053
(817) 268-2027

SECRETARY-TREASURER

Norma Hart (92)
190 N. First Ave.
Coal City, Il. 60416
(815) 634-3006

American Dutch Rabbit Club

DIRECTORS DISTRICT 1

Jack Wireman (90)
5475 Seeman St. S.W.
Navarre, Oh. 44662
(216) 484-1397

Mark Pecaric (91)
991 Klockner Rd.
Trenton, NJ 08619
(609) 586-1807

Fred Mullinax (92)
105-A East View Dr.
Lincolnton, NC 28092
(704) 732-1554

DIRECTORS DISTRICT 2

Karl Ehnis, Jr. (90)
767 E. Five Mile Rd.
Whitmore Lake, Mi. 48189
(313) 449-4577

Dick Gehr (91)
190 N. First Ave.
Coal City, Il. 60416
(815) 634-3006

Dr. T.E. Reed (92)
Box 98
Markle, In. 46770
(219) 758-2015

DIRECTORS DISTRICT 3

Fran Schettler (90)
305 Romae Ct.
Danville, Ca. 94526
(415) 838-8036

George Parmer (91)
990 S.W. Marjorie Ln.
Beaverton, Or. 97005
(503) 644-4870

Charles Christ (92)
7221 N. 25th Lane
Phoenix, Az. 85021
(602) 864-6085

SWEEPSTAKES CHAIRPERSON

Kevin Hooper
585 Cherrybend Rd.
Wilmington, Oh. 45177
(513) 584-4669

YOUTH SWEEPSTAKES

Jeffrey Andrews
325 Hamilton St.
Albion, N.Y. 14411

PUBLICITY DEPT.

Al & Barb Butler
4310 Richville Dr SW
Canton, Oh. 44706
(216) 484-1977

DUTCH REPORTER EDITOR

Dick Gehr
190 N. First Ave.
Coal City, Il. 60416
(815) 634-3006



The Dutch Reporter is published 6 times yearly. Material for publication and Ads must reach the EDITOR by the 10th of January, March, May, July, September, and November in order to appear in the following issue. PLEASE ADHERE TO THE DEADLINES.

ADVERTISING RATES:

	<u>Single Issue</u>	<u>Yearly</u>
Full Page	\$ 30.00	\$ 120.00
Half Page	\$ 20.00	\$ 80.00
Third Page	\$ 16.00	\$ 65.00
Fourth Page	\$ 12.00	\$ 48.00
Yearly Breeder Card / 1 size	-	\$ 18.00
Judges and Registrars Listing	-	\$ 12.00
Booster Listing	-	\$ 12.00
Dutch "FOR SALE" Listing	\$ 10.00	-

MAKE CHECKS PAYABLE TO THE AMERICAN DUTCH RABBIT CLUB

PRESIDENT'S MESSAGE
Wenton Carlton

It is Summer time here in Arizona with a lot of extremely high temperatures (117- 122) in Tulsa and Phoenix. It makes raising rabbits near impossible. Many people have lost rabbits. I have been lucky so far, just hope I can continue to have good luck the rest of the Summer.

Our shows are at a stand still and won't start again until Fall. There will be a few night shows in New Mexico and West Texas, but it is too hot for that here.

Time to start planning for the National Convention in Florida. Hope to see all of you there. I am ready to go and am rather surprised to have a few juniors that don't look bad.

If anyone has any business or anything to bring before the Board, let us know. We also need to remember that elections will be coming up shortly. Please, everyone vote! That is the only way you have a say in how your club is run. Let's have a large turnout.

Not much else as far as news goes, so hope to see all of you in Florida in November. **REMEMBER** to keep your bunnies cool, and good luck to those who can show during the Summer.

DISTRICT I
Jack Wireman

Well fellow Dutch breeders, it's that time again. Things sure quiet down after the middle of June in our area. Mr. Weatherman takes care of that. Our area is hot and humid. Example: today is June 30th and it's supposed to be close to 90 and rain nearly all day. You sure have to keep the air moving in the rabbit building.

From what I see on the boob-tube, Wenton and the gang in the Southwest got warm lately. I like warm weather, but not that warm! Enough weather.

We have elections coming up again. Vote your choice, or as I've said over and over again, keep your mouth shut!

DISTRICT I (con't)
Jack Wireman

I'd really like to see at least 50% of you vote. Soon as you get your ballot mark it and mail it. Easy as that. I you lay it aside until tomorrow, well we all know that tomorrow never gets here and you lose out.

The Ohio Dutch Club is all excited about the National Dutch Show next May 3-4-5. We have plans I think you will like. If any of you have specials you would like to donate, I will take them anytime. More about the NDS later.

That's about all for now Dutch people, so until next time, keep hoppin and we may hop into each other down the road someplace

DISTRICT II
Dr. T.E. Reed

Several constituents from my District have related that they do not wish to receive the local weather report or other materials that are repeated by the various officers and directors in the Dutch Reporter. They are much more interested in the status of the Dutch rabbit at the present time within the District; as well as information as relates to successfully raising the Dutch rabbit. Therefore, I will try to adhere to their request.

The Dutch activities within the District remain at a rather rapid pace. The exhibition of the Dutch rabbit is much higher in the late Spring shows and early Fair shows than in past years. There is a tremendous abundance of high quality Dutch rabbits being produced and exhibited within the District.

I have forwarded an article to Edit Gehr concerning the judging of the Dutch rabbit and anticipate it will enhance the judging of the Dutch rabbit for the beginner and judges.

I would like to request input on the type of articles and information that the Dutch producer would desire

DIRECTOR'S MESSAGE

by Fran Schettler, California

We here in the San Francisco Bay Area are thanking our lucky stars that we live in an area that gets fog. Why, you ask? We have just finished 4 days of 106 to 108 degree weather here in Danville, and, believe me, the rabbits were really sweating it. Even with three swamp coolers going in our barn, the temperature still got up to almost 100 degrees inside. Fortunately the fog came in to the San Francisco Bay, and cooled us down. Still, Jim and I spent most of this last weekend shopping for and installing an air conditioner in the barn. Since we both work, it gets real old hauling rabbits who are borderline on stressing out from the heat into the house where it's cooler and we're not home to do some of the other things that might help keep the heat down. Now we'll wait until the next heat wave, and see if it helps!

Jim and I have recently travelled to Southern California for some Dutch specialty shows, one put on by the California Dutch Rabbit Club, and one by the Roadrunner Dutch Club. Both shows were nicely attended, with 65 - 75 rabbits entered and everyone seemed to have fun. Last weekend we attended an open show in Watsonville, which is near Santa Cruz. We spent the lunch hour touring the town, and remarking on the earthquake damage. Back at the show, Marybeth Talbott, a youth breeder, once again dominated the largest variety, the blacks, winning three of the four classes and taking both BOV and BOSV. Her BOV senior doe was in close contention for BOSB, but was edged out in a very close call by the BOSV tort.

The California Dutch Rabbit Club has a double Dutch show coming up on August 18 in Morgan Hill, and another double show being organized for October 21 at Vallejo. The Sun Valley Dutch Fanciers has a show on July 29 at Cardiff-by-the-Sea. Dutch activities seem to be going strong here and we have a lot of youth involved. This is something that we are all trying to encourage.

Articles, statements, and opinions printed in the DUTCH REPORTER may not be those of the ADRC or the Editor, and are solely the responsibility of the Authors.

by Fran Schettler

In this day and age of computers, we are all aware of the time savings that can be had by being able to process show paperwork as well as the rabbitry paperwork by computer. There are several ads in rabbit magazines for various programs, but, as anyone with any computer experience knows, you can never tell how good a program is until you use it for awhile. Since I hate to risk throwing away my money on a poor program, has anyone out there found a good rabbit show secretary's program that will run on a Macintosh SE? Or an IBM? How about a good pedigree program that produces really nice looking pedigrees? I suspect that many other readers of the *Dutch Reporter* would be interested in your findings-- how about sharing them with us?

FROM THE EDITOR - Dick Gehr

The time sure flies when you're having fun! The Fairs are in full swing, and I have been judging at least 2 days each week plus the weekends. My car is starting to get a little P.O. ed at me for all the miles.

The results of the Youth National Dutch Show are printed in this issue. Thanks to Jeff Andrews for getting this information to me. He did a real fine job of typing up the Youth show reports also. Thanks for the effort Jeff.

There are a couple of nice articles this issue, as well as A FEW from the officers and directors. Guess some of them forgot about the DR. I haven't heard from a couple of them since the TULSA Convention. Wonder why?

Help me make this publication a good one, and send me something to print. You don't have to be an officer or director to contribute. SEND IT, don't just say you did!

From the Desk of your Secretary
Norma Hart, IL.

Have you checked your Dutch Reporter label lately to see when your membership expires or when your 'First Class' mailing ceases? If you haven't, you may want to take a quick peak and renew promptly to ensure that you do not lose any accumulated sweepstakes points or issues of the DR. If you have a change of address, please notify this office promptly. Your membership labels are issued here and if I do not have your correct address, you will probably not receive your Dutch Reporter. These are mailed out non-profit rate and are not forwardable. Always be sure that we have your correct address and zip on file.

This issue of the Dutch Reporter contains the final election ballots. A husband/wife membership is entitled to two (2) ballots while a single adult paid membership will only use one (1) of the ballots enclosed. The youth have a separate ballot. If you will look at the nomination results elsewhere in this issue, you will notice that only a 'few' of the members took the time to exercise their voting right. I find it hard to believe that each and every voting member does not take this opportunity. It almost appears as though it would be of benefit to have a judges' selection committee for both the NDS and the ARBA Convention and save the balloting. If anyone has any ideas on how we can obtain better participation at election time, please pass them on. It's a shame to feel like the time, material and expense that goes into the ballots and envelopes is wasted by the majority of the membership. Let's all pitch in and have one of the biggest final election ballot turnouts that we've had in a long time. It takes very little effort and only a .25 cent stamp!

Tampa is just around the corner! You can still send in some late specials for this event by mailing your

From the Desk of your Secretary (con't)

check directly to this office. If you have a preference as to where your donation is to go, be sure to list it. Any donation is appreciated and will assist in making the Dutch specials 'look good'! I hope to see alot of our Dutch members there. Remember that the Ohio State Dutch Club will host the 1991 National Dutch Show and will also appreciate your help with specials donations. You might want to remember the raffle and start thinking about what you're going to donate. It's not too early to start getting this together and usually helps makes the load lighter 'later'!

The Illinois Rabbit Breeders Association will be hosting their annual Illinois State Convention in Springfield, Illinois September 22nd. and 23rd.. We here in Illinois, invite you to come show your rabbits with us and to also participate in the 'All Dutch Show' to be held on the 23rd.. This show is being hosted by the Illinois Dutch Rabbit Club. We hope to see lots of familiar faces and a large Dutch turnout...come join in!

Remember,....."it is a peculiar quality of a fool to perceive the faults of others, and to forget his own".

IMPORTANT NOTICE

Due to unforeseen problems in the appointment of an 'Election Committee', the results of the nomination balloting were not received on schedule. Therefore, your final election ballots WILL BE RECEIVED UNTIL SEPTEMBER 30TH in order to compensate for the delivery of the July/August issue of the DR which contain the ballots.

The ADRC greatly appreciates the quick response of the 'Election Committee' and wishes to thank them for taking on this responsibility on such short notice.

DISTRICT II
Richard Gehr

" YOUTH MEMBERS "

There has been a very good showing of our breed within the District during the Spring shows, and I hope that the Fall will produce even more quality and quantity.

The Illinois Dutch Rabbit Club is planning an All Dutch Show in conjunction with the Illinois State Convention, to be held on September 22nd and 23rd. The Convention show will be judged on Saturday, with the Specialty show held on Sunday. According to Kathy Krahl, if everyone shows up that has inquired about the All Dutch Show, we could expect an entry in the area of 150 Dutch or so. That would be great!

Tex Thomas, from Marionville, Mo. will be the judge for the All Dutch Show. From past experiences, Tex will do a fine job judging our animals, and we should all make an effort to try to attend.

As I travel throughout the United States judging, I try to take a look at the Dutch everywhere I go. I seem to be seeing some very fine animals, although it is apparent that in every area people are looking for breeding stock. We cannot encourage new breeders, or help the "old guard" improve their herds if we are not willing to cut loose of some of our breeders. Should you have an abundance of breeding stock, make it known to your fellow Dutch breeders. There are people all over trying to acquire foundation stock, or just an additional buck or doe for improvements.

I will be looking forward to seeing any of you that can make it to Tampa. Let's try to give Larry Bengtson a large entry to keep him busy down there. Larry has been a long time breeder, exhibitor, and judge of the Dutch breed, and I think we will be well satisfied with his performance.

Until someplace down the road, good luck to you all.

Hi! I am Amy Minter, a Youth member from Michigan. I am working with Shana Powers, a Youth member from Indiana in an attempt to organize some activities for the Youth in the Dutch Club. We would appreciate other Youth's input. We would like to know what you, as members, would like, such as a Youth page in the Dutch Reporter, Youth Dutch Royalty contests, special activities at the Conventions and National Dutch Shows, a Youth Representative, and any other ideas that you might have. PLEASE write us with your suggestions. Let's make the Youth membership a dynamic part of the Dutch Club. Looking forward to hearing from you.

Amy Minter
7405 Calkins Rd.
Flint, Mi. 48532
(313)-659-9814

U.S.D.A. LICENSING
by Bob Nicoll
Bo-Nat's Rabbitry
U.S.D.A. # 16B-006

Most rabbit breeders and showmen should realize that they need, and have to have, a U.S.D.A. License. This is what determines if you need one:

- 1 - If you transport or sell or buy across state lines.
- 2 - If you sell to pet shops or farm supply outlets.
- 3 - If you sell to laboratories.
- 4 - If you sell for meat and the rabbit goes to another state.

If you get caught without a license, the fines per rabbit, per day are over \$1,000.00. It is very easy to get your license. First you write to the U.S.D.A. and ask for the application and booklet for rabbit licensing. Then you make out the application and send it with a \$10.00 processing fee. You will be notified when you will have your prelicensing inspection. This is the only time they announce they are coming.

U.S.D.A. LICENSING (con't)

At the time of this inspection, you will have to pay \$30.00 which is good to \$500.00 worth of business. Anything over that costs more. Future inspections are unannounced.

The following requirements are necessary for licensing:

- 1 - A veterinarian to oversee your operation.
- 2 - The right size cages, not overloaded with rabbits.
- 3 - A clean operation.
- 4 - Rabbits have to be fenced in if they are outside.
- 5 - Clean and not diseased animals. (This is explained in section 3 of the U.S.D.A. booklet.)

This is for all breeders of rabbits. Why take the chance and not be licensed. It can cost you and cost hard. This license is also for your protection and a total of \$40.00 yearly is cheap.

The address is:

U.S.D.A., APHIS, REAC, AC.
NORTHEAST SECTOR OFFICE
2568A RIVA RD. SUITE 302
ANNAPOLIS, MD. 21401-7400

SANITIZING A RABBITRY

by Bob Nicoll
Bo-Nat's Rabbitry

All rabbitries, whether indoor or outdoor, need to be cleaned and disinfected. This keeps any and all diseases down. Here's what and how I do my rabbitry and I have a census of over 170 animals and close to 100 cages.

First of all I move one row of ten cages and their animals to other quarters (which have been done). I then wire brush the floors, burn off all hair, close this section on auto waterers and soak the tubing and valves and feeders in Clorox and water for 1/2 hour. Then I soak down the cages with Clorox and water, rinse and let dry. I then move the next ten animals to these clean cages and repeat until they are all done. This is done once a month and

SANITIZING A RABBITRY (con't)

at the same time I make any repairs needed. I clean water systems weekly to prevent algae from growing. In my breeding house, I do a daily cleaning of everything and also mop the floor with Pine-sol and this way I don't have kits with infections. My breeding house is climate controlled and houses 60 to 80 with all cages full. Once a week I clean the water system and after each use I clean my wooden nest boxes with Pine-sol then Clorox. I also spray unscented lysol in the nest boxes just before I use them again and this way they can be used on any rabbit. I have a very small mortality rate and I can't remember when I have had eye infections in the animals. I can do all this in under two hours time and this is nothing but preventing a loss which can be more costly.

1991 NATIONAL DUTCH SHOW UPDATE

The 1991 National Dutch Show will be held May 3-4-5. Ad prices for the catalog are as follows:

- Full page..... \$35.00
 - 1/2 page..... \$18.00 (page size 11 x 8 1/2)
 - 1/4 page..... \$12.00
 - 1/8 page..... \$ 8.00
 - Breeder listing up to 5 lines \$4.00
 - Breeder listing up to 3 lines \$3.00
- Send ads to Jack Wireman, Navarre, Oh.

Motel - Knights Inn - 5200 Montville Dr
Medina, Oh. 44256 (216)-722-4335

- 1 person 1 bed.....\$20.00 + tax
 - 2 people 1 bed.....\$22.50 + tax
 - 2 people 2 beds.....\$24.50 + tax
 - 3 people 2 beds.....\$26.50 + tax
 - 4 people 2 beds.....\$28.50 + tax
- Reservations accepted anytime from now to April 15, 1991. Call or write Motel and tell them you are with the Dutch Rabbits. This is a 2 year old Knights Inn at the intersection of Ohio 18 and Interstate 71

EVALUATION OF THE DUTCH RABBIT

BY DR. T. E. REED

The Dutch rabbit has unique, distinctive markings and is recognized in six varieties: Black, Blue, Chocolate, Tortoise, Gray and Steel. The mature body weight of this breed is from three and one-half (3 1/2) to five and one-half (5 1/2) pounds. The Dutch rabbit is small enough to be housed in relatively small areas; yet, large enough, for the youngsters culled from the herd to produce an adequate sized fryer at twelve (12) to fourteen (14) weeks of age. This rabbit usually has a very desirable personality (needed for pet stores) and presents an ideal breeding challenge of type, fur and markings for the rabbit fancier.

The characteristic of the markings, and their importance (50 points), has created some difficulties for the breeder evaluating their own rabbits; as well as inconsistencies at exhibitions due to the lack of understanding and comprehension of the Standard of Perfection. With study and persistence, the Dutch rabbit can be evaluated by the breeders and judges correctly.

The Dutch is exhibited in four classes in each of the recognized varieties (stated above). The classes are divided into males (bucks) and females (does); and, each of the sex classes are divided into two distinct age classifications; seniors and juniors. The senior animals are those that are six months of age and older; or, those animals that have attained the minimum senior weight of three and one-half pounds. Junior animals are those animals under six months of age; and, remain under the maximum weight limit of five and a half pounds.

This classification has proven confusing to many beginners. To further explain, a rabbit that is over the three and a half pound weight minimum, regardless of age, may be shown as a senior. A Dutch that does not attain the minimum of three and a half pounds and is six months of age or older, must be eliminated for failure to meet the minimum weight required for a senior animal. An animal classified as a senior must weigh over three and one-half pounds and under five and one-half pounds. All Dutch rabbits over five and one-half pounds, junior or senior; buck or doe, must be eliminated for exceeding the maximum weight limit.

HANDLING THE DUTCH RABBIT

It is very important that all rabbits be handled correctly at all times! It is mandated that they be handled in such a manner that it is not painful to the rabbit and they are not injured; in addition, they must be handled in such a manner that the rabbit does not injure the handler. The rabbit's only protective mechanism is to "escape". In the attempted "escaping process",

it is possible for the handler to become injured (scratched) with the sharp toenails if the rabbit is not handled correctly.

MOVING THE RABBIT AROUND

The rabbit can be picked up, or taken from a holding pen, with relative ease by placing one hand under the rabbit, palm up, just behind the front legs and supporting the majority of the weight with the opposing hand placed under the rump. The rabbit can be readily moved about in this position; or, the head of the rabbit can be tucked into the curvature of the elbow and the weight of the rabbit supported on the arm against the torso of the handler, while the rabbit is retained in that position with the opposing hand. The rabbit should never be carried by the ears! Picking the Dutch rabbit up by the skin back of the neck is not recommended as it may distort, or alter, the fur on the neck and/or saddle allowing the marking to be ragged in appearance.

POSING THE DUTCH RABBIT

The Dutch rabbit is posed in the standard posing position! The rabbit must be setting squarely on its hind feet with the tip of the toes of the back feet even with the stifle (knee) joint; and, the tip of the toes of the front feet even with the eye. With the Dutch rabbit in this position the fur that may have been displaced in the handling process should be repositioned and smoothed down. The rabbit is now ready to be evaluated for type, fur, shape and placement of the visible markings.

Placing the hind feet too far forward by "pushing or tucking" the rabbit together can alter the body type by giving the animal the appearance of being undercut, pinched or lacking development of the lower hip. Allowing the hind feet to be placed too far to the rear can alter the body type in allowing the body to appear long, flat over the hips or weak in the shoulders; and, even distort the saddle markings.

Misplacing the front feet can alter the shoulder conformation in that if they are placed in front of the eye, the animal may appear weak, or flat, (lacking roundness) at the shoulder and the saddle marking may be disturbed. If the front foot is tucked under the jaw, the saddle may be distorted.

For proper evaluation of quality, it is essential that the Dutch rabbit be posed properly!

TURNING THE RABBIT OVER

To evaluate the physical structures on the lower side of the animal's body and to evaluate the cheeks, undercut and lower side of the stops, it is mandated that the rabbit be turned over.

Ideally, the markings are to be evaluated as if one was looking from underneath through a clear glass with the rabbit posed in a normal position.

To physically turn the rabbit over, the head must be controlled with one hand while gently lifting up and pushing away from the handler's body. With the opposing hand the palm is "cupped" under the rump, supporting most of the weight and pulled toward the handler's body. This can be done in one easy coordinated rolling motion and presents the underside of the rabbit for examination. The head can be controlled in a variety of ways; but, it is essential that it be done in such a manner that none of the markings are distorted. One can grasp the ears at the base, using very little pressure, between the thumb and index finger while restricting the movement of the head with the three remaining fingers that are "open" and being sure not to grab the skin at the base of the neck distorting the head markings. In the process of turning the Dutch over, care must be given that the front legs and hind legs remain in relatively the same position (distance from each other) as when in the posed position. The Dutch must not be viewed from the bottom in a "stretched out" position as this may distort the undercut.

After the evaluation has been completed, the above motion can be reversed and the rabbit "reposed" in the standard position. The rabbit can be placed in the cage, or holding pen, by gently setting the rabbit back in place using care that the legs do not become caught on the sides and that the animal is set down gently and not roughly "thrown" down.

There is absolutely no excuse for mishandling the rabbit as it can cause pain and possible injury to the rabbit.

EVALUATION OF GENERAL TYPE OF THE DUTCH RABBIT

The shape of the Dutch rabbit should give the overall appearance of "roundness"! There should be a round head, with balanced ears, set upon a round, close-coupled compact body that has harmonizing extremities (legs and tail). Twenty-five (25) points is allocated to the general type of the Dutch rabbit and seventeen (17) of those points are for body shape.

The "roundness" of body is initiated just behind the ears and continues in an arc to the highest point of the body profile located at a point of a line perpendicular (up and down) to the stifle joint and the tip of the hind toes (when posed correctly). The top line of profile should "round off" from the high point of the body to a full well-developed hindquarter. The shoulder must be slightly narrower than the hindquarter; and, the midsection should be sufficiently developed that the sidelines of the body are straight with a slight taper from the shoulders to the hips and then rounded to a well-filled lower hip.

It is mandated that the Dutch rabbit demonstrate the body profile of a short-coupled round animal irregardless of the physical size - 3 1/2 to 5 1/2 pounds senior weight.

Any deviation from the above described body type shall be faulted in accordance with the severity of the fault(s). A dewlap (a pendulous fold of skin beneath the chin) is not desired in the Dutch as it detracts from the roundness of the body shape that is desired. Dutch with a prominent dewlap must be cut severely. It is extremely important that the faults be evaluated in accordance to there severity and not one particular characteristic over emphasized.

HEAD, EARS AND EYES OF THE DUTCH RABBIT

Head type is allocated five points of the twenty-five points allocated to general type. The head shape is to be round and full from all directions and set directly on the body with little or no apparent neck. Any deviation from the desired head shape must be penalized in accordance with the severity of the fault. The head should be neither refined or coarse; but, must have the necessary roundness and fullness to support the appropriate placement of the round cheek markings.

While examining the head, one must give special attention to the nose, lips and teeth for the presence of eliminations or disqualifications.

The ears must balance and be in proportion to the size of the head and body. Ears of good substance that are well furred from the base to the tip and that are relatively short are desired. Any deviation from the described ear must be faulted in accordance to the severity of the fault. The ears on the Dutch are allocated two points.

Special attention must be given to the inside tips and margins of the ear for distinct white spots that frequently go unnoticed. These are disqualifications that would prevent the animal from competition. Also, the deep inner surface of the ear must be observed for the presence of ear canker that would eliminate the specimen from competition.

The eye of the Dutch rabbit is allocated only one point and a determination of placement usually will not be due to this physical characteristic. However, there are a number of disqualifications related to the eyes. Mismatched eyes, abnormal iris color for the variety and these include the presence of spot(s) in the iris (particularly in the dilute varieties) or on the cornea.

The head, ears and eyes are extremely important to the overall appearance of the Dutch rabbit. However, one must realize these

features are only allocated relatively few points in comparison to other characteristics. It is essential that the faults of these structures only be in proportion to the point allocation.

DUTCH MARKINGS

The Dutch rabbit has six markings that are allocated fifty points. There is more emphasis, by the Standard of Perfection, on these features of Dutch than any other single physical characteristic. However, one must have correct type to enhance the markings. This is an area that many beginning fanciers and judges become confused and misinterpret.

Each of the markings on the Dutch has two extremely important characteristics. They are:

1. Shape of the described marking.
2. Placement of the described marking.

Each marking has these characteristics and they determine the correctness of each individual marking. All the markings on the Dutch are to be "round", or in a circle, with the exception of the blaze and neck markings; and these two markings are controlled by the shape and placement of the two cheek markings.

HEAD MARKINGS

The head markings consist of the blaze (5 points), neck marking (5 points) and the cheek markings (12 points). The round cheek markings are to be placed on the head where the upper portion of the marking goes between the ears at the top and are to be placed to the whisker bed at the lower portion of the cheek. With the placement of one cheek marking on each side of the head will form an upside down wedge-shaped blaze and a "V" shaped neck marking. The blaze and the neck marking should be evaluated when the animal is posed in its natural position and care must be used not to tug, poke or distort these markings.

Cheek markings with improper placement will cause the blaze and neck marking to be too narrow or too wide, too low (into the whisker bed) or too high (resembling eye circles). Cheeks that fail in shape will cause the marking to have angular or square cheeks, allow for the appearance of drags or runs on the neck or blaze. These faults are particularly common on the lower cheek and neck area.

The two round cheeks ideally placed on the round head will create a white hairline where the two marking approach each other between the ears. This is not a required marking and there are not any points allocated to the hairline. However, if spot(s) of white fur are present on this line, it is not to be a disqualification. Spot(s) off the center line and in the drags and runs of the neck marking can be present on occasion and these

are disqualifications. It is extremely important that they be evaluated to be assured that they are individual spots and not just a run or drag in the colored portion of the fur.

The proper size and shaped head and ears, with the correctly shaped and placed markings on the Dutch rabbit's head, is a sight to behold. There are a total of thirty points allocated to the head, ears, eyes and markings of the Dutch rabbit's head.

SADDLE AND UNDERCUT MARKINGS OF THE DUTCH RABBIT

The saddle and undercut, sometimes referred to as the belt, are the markings formed at the juncture of the white and colored fur on the body of the Dutch rabbit. The saddle refers to that marking that is visible without turning the animal over. The undercut is the continuation of the saddle marking on the underside. It is the portion of the circle that can be viewed from the bottom and is basically the marking from the inside of the legs from right leg to left leg on the underside.

The "shape" of the saddle and undercut is a continuous uninterrupted circle around the body of the rabbit. This circle should be complete without any drags of color into the white; or, runs of white into the color section.

The placement of the above markings should be as close to each of the elbows of the front leg as possible without touching and be straight across the body (at right angles to the long axis of the body). The saddle markings should be at a right angle to the top line of the rabbit and the undercut at a right angle to the long axis of the body. With appropriate type, the shoulder will be slightly lower than the high point (described earlier) at the loin. When viewed from the side profile, the correctly placed saddle will slant very slightly toward the head.

The saddle and undercut are allocated ten and eight points respectively. The placement of one side being farther back than the other side is called a "biased, crossed or diagonal" saddle. Drags, runs, nicks or jogs must be penalized to the degree of the fault. The colored portion of the saddle touching the front leg (elbow) is a disqualification and it is common among Dutch breeders to call this a "tied front leg". This condition can be difficult to determine. It is mandated that the animal be viewed in its natural position and that the front legs not be pulled out of the natural position to view. An accepted method of determining if the front leg is "tied" to the marking is to place the index finger in the paw of the front foot and the thumb of that hand on the pointed skeletal portion of the elbow. Color extending below the thumb indicates a "tied" front leg and the animal must be disqualified from competition.

A straight saddle placed at the appropriate position is beautiful

and distinctive site on the Dutch rabbit. The saddle and undercut are responsible for eighteen of the fifty points allocated to markings.

STOPS OF THE DUTCH

The stop markings are allocated ten points; or, five points for each foot. Both rear feet must be solid white from the tip of the toes to the junction of the color at one-third of the distance from the tip of the toes to the point of the hock. The point of the hock is the place on the foot that is farthest to the rear of the foot when the animal is in a normal sitting position. The first third of the foot should be white and the remaining two-thirds should be colored and join the color of the body without interruption.

The shape of the marking should be a circle that continues around each foot placed as described above. The top and bottom of the marking should go straight across the foot at a right angle to the foot. Both stops should be equal in length. Stop markings that are diagonal (biased), have runs or drags, must be faulted in proportion to the severity.

Body color that runs completely between any of the toes on either of the hind feet connecting the upper colored portion of the stop with the lower colored portion is termed a "split stop" and is a disqualification. If the white portion of the stop marking reaches the hock and extends onto the leg (inside or out), this is also a disqualification. Stops, in addition to the above faults, can also be too long, too short or can be unequal in length.

It is extremely important that the stops be viewed from all directions (sides, top and bottom) for the appropriate shape and placement.

DUTCH FUR

Dutch fur is unique in its structure and will determine the distinctiveness of each of the markings. The fur must lie very smooth over the entire body and demonstrate a highly developed luster. There should be as much density to the coat as possible and the length should be relatively short compared to other normal furred rabbits. It is mandated that the fur "fly-back" to its natural position when stroked from tail-to-head. Therefore, it is essential that the guard hairs (the longer-larger diametered hair) be plentiful and uniformly distributed throughout the coat. The presence of fewer longer guard hairs to achieve the fly-back desired must be avoided due to the overlapping of the long guard hairs into the white of the marking that will cause the marking to lose its distinctiveness and cause a ragged appearance.

A properly balanced guard hair to under coat that is well

finished on a Dutch rabbit is a sight to behold and enhances the beauty of the various markings.

COLORED VARIETIES OF THE DUTCH RABBIT

The color of all varieties of the Dutch rabbit are extremely beautiful when the animal has the appropriate type of fur and the fur is in good condition. The beauty is greatly enhanced when it appears on an animal that has the correct type with the appropriately placed and shaped markings. There are six different varieties of the Dutch rabbit. Each variety has excellent specimens of the breed; but, the popularity of the varieties are regional in certain areas of the United States.

The white portion of the Dutch includes the front feet and legs, the front portion of the body (including the neck), to the juncture of the color at the point of the saddle and undercut (belt markings). The head and neck is to be white with the exception of the two cheek markings and two ears. The only white on the rear portion of the Dutch are the stops which are both white from the tip of the toes to the juncture of the colored portion of the foot at a point ideally one-third of the distance from the tip of the toes to the "point" (end) of the hock.

All of the white fur on the rabbit should be as white as possible and free of all stains. The white color enhances the appearance and intensity of the colored portion of the Dutch rabbit.

BLACK

The entire colored area of the Black Dutch should be as black as black can be and the black color must carry as far down on the individual hair shafts as possible. The black color should then blend into a dark slate-blue undercolor next to the skin. The depth of color on the hair shaft and intensity of the undercolor will be reflected in the depth and intensity of the surface color. The uniformity (evenness) of the surface color is extremely important. Any variation of the black surface color, due to scattered white hairs or a "brownish" cast from the coat being dead, must be faulted.

Accumulation of scattered white hairs in the crotch, on the tail and on the ears is a common color fault that often goes unnoticed.

The eye color must be dark brown. Many individuals equate the depth of eye color as an indication of the depth of body color in very young Black Dutch.

BLUE

Correct blue color is beautiful! A medium-dark blue glossy coat

is mandated in the Dutch rabbit. This allows for a variation in the shade of the blue color from individual to individual; but, it is extremely important that the color of the individual be uniform and of the same color shade in all the colored portions of the animal. The blue color must extend down the hair shaft as far as possible and blend into a slate-blue undercolor. This trait will assist in intensifying the blue surface color and assist in preventing a variation of the surface color on the same animal.

The eye color must be blue-gray and the depth of eye color is equated, by some individuals, as to the darkness of the coat color in young developing Blue Dutch. Eye Color of the Blue Dutch must be correct. It is not uncommon for the eyes in Blue Dutch to be brown. These must be disqualified. However, the problem occurs when the color has a brown cast with blue-gray marbling. The decision between brown and blue-gray becomes critical. This condition exists due to the common practice of crossing the Blue and Black varieties.

Any variation in the uniformity of the surface color due to frostiness, shadings, or a "brownish" cast must be faulted in proportion to the severity of the fault. Variation in ear color in comparison to the cheek and body color is a common fault and on occasion is not readily noticed.

CHOCOLATE

This color mandates a dark shade of chocolate-brown that is uniform over the entire body and has a glistening (glossy) appearance. This is an extremely fragile color as exposure to light or the presence of a slight molt detracts more from the uniformity of the surface color than in any of the other varieties. It is important that the dark-brown color be carried well down the hair shaft and blends into a bluish dove colored undercoat next to the skin. This type of development of color on the hair shaft and undercoat assists in the development and maintenance of the dark brown surface color.

The eye color of the Chocolate variety must be a dark brown. When examined in certain types of light, the eyes of the Chocolate Dutch may demonstrate a distinct ruby cast; and, this is permissible. In general, this variety is plagued with the presence of white spot(s) in the iris more than any other variety of Dutch.

Any variation of the uniformity of color due to molt, light discoloration, mealiness, varying shades or frostiness must be faulted in accordance with the severity.

GREY

This is a beautiful agouti patterned variety; meaning that there are three or more distinct bands of color visible when looking into the parted fur on the colored portion of the Dutch. The base color (next to the skin) is to be a slate-blue and is to be the widest of all the bands. The next band of color is to be a band of medium tan and this band should not be as wide as the undercolor band; but, should be wider than the final two bands of color. After the band of medium tan, the next coloration should be a very narrow band of brownish-charcoal that should be in equal width to the final outer band of light tan. The entire colored area must be uniformly disbursed with black guard hairs. An excessive amount of guard hairs will cause the surface color to be entirely too dark. It is extremely important that there be a correct balance of black guard hairs to have the correct surface coloration.

A narrow lining of each ear with black that blends into the grey fur colored ears is desirable. The Grey Dutch will have eye circles that should be light to medium tan in color. The bottom of the tail, insides of the rear legs and the belly should be a creme to white surface color and a slate-blue undercolor. Medium-tan lap spots located in front of the crotch on each side of the groin are permissible.

Due to the surface color of the belly being creme to white, it may be necessary to determine the location and shape of the undercut by blowing into the fur and utilizing the blue undercolor to locate this marking. The top side of the tail must complement the body color.

The Grey Dutch is faulted for light or brassy surface color caused by the lack of black guard hairs and/or the excess expression of the light tan ring color. Dark surface color is one of the most common color faults. In addition, as in the other varieties, they are faulted for scattered white hairs and lack of uniformity of surface color.

The eyes of the Grey Dutch are to be dark brown.

Grey Dutch that do not have the slate-blue undercolor; or, those that fail to express ring color must be disqualified. Grey Dutch color is beautiful; but, it is usually more difficult to attain the appropriate color than the Black, Blue and Chocolate; but, there are outstanding specimens in this variety.

STEEL

This is an extremely beautiful variety to observe, when correct; but, it is a very difficult variety to describe without visual aids. This is a "man-made" color produced by crossing the other

varieties to obtain the desired color. This variety is not uniformly wide-spread in the United States; but, has geographical "hot beds".

The color is produced by having uniformly disbursed light tipped guard hairs evenly distributed over a black background. The undercolor should be slate-blue. The color should be uniform over the entire colored section of the rabbit including the belly, inside of legs and the top side of the tail.

The Steel Dutch must have dark brown eyes and is faulted for white hairs; brassy or brown tinge to the coat and lack of uniformity of surface color. It is not uncommon for the Steel Dutch to be very dark over the middle of the back.

TORTOISE

This is a popular and beautiful variety of the Dutch rabbit. This variety is unique in that the desired color is shaded rather than demanding uniformity of color over the entire surface area of the body.

The top portion of the colored area, including the upper side of the tail, should be a uniform clean orange without any darkness from smut (dark surface color), or dark hairs. The bright orange top color should have a dark creme undercoat next to the skin. The orange top color must gradually blend into the smokey-blue shadings of the rump and lower part of the colored portion including the rump, haunches and lower side of the tail.

The shadings on the head are quit unique and oftentimes misunderstood. Each of the cheek markings require the smokey-blue shadings being the darkest at the whisker bed and lightening in color as they approach the jaw line to allow more of the orange coloration to be expressed. The base of the ears and top of the cheeks to be dark smokey-blue and the shadings on the ears to lighten as the tip of the ears approach so they match the body color. The edges of the ear to be delicately laced with the smokey-blue shading.

The eyes are to be dark brown in color.

The Tortoise Dutch is to be faulted for white hairs, varying tints to the body color and shadings that are light or excessively dark and the underside of the tail that is light in color.

SUMMARY

In summary, evaluation of the Dutch rabbit type and markings can be confusing if they are not totally understood. Type must always give the appearance of "roundness" in all perspectives. Each of

the six markings has a round shape; or, made of markings with a round shape and must be placed at the appropriate location.

Dutch fur is shorter than normal fur and is necessary to allow the distinctiveness of the marking. Condition of the animal will enhance the roundness of the body. There are six varieties of the Dutch. The Black, Blue, and Chocolate are relatively easily understood; but, there are strict guidelines to follow in the Grey, Steel and Tortoise.



The American Rabbit Breeders Association, Inc.

Devoted to the Interest of Rabbit Raising for Commercial and Fancy
PARENT BODY OF ALL SPECIALTY CLUBS AND CHARTERED LOCALS

ONE NATIONAL JUDGING AND REGISTRATION SYSTEM

From the desk of the Youth Committee Chairperson DALLAS MEYER RR 1, Thawville, IL 60968
Ph: 217/387-2427

JUST A FEW THINGS FROM THE YOUTH CHAIRMAN

As the new youth chairman I would like to extend an invitation to all the youth members of the A.R.B.A. to take part in one or all of the contests offered to them by the A.R.B.A. yearly.

Some people think the only way that they can enter one of these contests is by going to the conventions. This is not so. The Achievement contest and the Management contest do not require that you attend the convention. These two contests are also divided into districts. The district winners then compete for a national winner, so when you send in your application forms they will be judged against kids in your district first and then yours might be selected to compete nationally.

The Royalty Contest is one of the contests that you have to go to the convention to participate in. You have to fill out an application form beforehand. When you get to the convention you will have to participate in a written exam, an oral interview, and a judging contest. We pick five finalists in each division of this contest, and this contest has four age groups for the boys and the girls.

The judging contest is the only contest that you do not have to preenter, you sign up at the convention. It is also divided into four age groups, so you are only competing against kids your own age. You will judge four classes of rabbits with four animals in each class. You can use your Standard of Perfection to do this.

Then there is the Educational Contest. This contest is divided into eight divisions. They are Drawing or Paintings, Arts & Crafts, Posters, Displays, Booklets, Educational Games, Woodworking, and Photography. All of these classes are divided into four age groups. They are: under 9, 9-11, 12-14, and 15-18. You must submit a entry form for each one of these divisions but you may only enter one article in each area. This is a chance to enter that 4-H project that you made for the fair in another contest. A lot of kids send project for this contest with people that are going to the convention even if they cannot attend themselves.

There are a lot of kids that think they have to win on a state level to enter these contests. This is not so. The only thing that you have to do is be a member of the A.R.B.A. A complete list of rules is in the Year Book, so look them up and join in the fun.

The new application forms will be ready in late March. You will be able to get forms from your district director, the A.R.B.A. office anyone on the youth committee, or myself. Get them early and take your time filling them out.

From the youth chairman
Dallas R. Meyer
R.R. 1 BOX 146

THAWVILLE IL. 60968

HAIR TODAY AND MORE HAIR TOMORROW

By Fran Schettler

Over the past several years I have noticed something that I haven't found an answer to. I haven't seen any articles in the magazines or professional journals, nor have I heard any discussions from other breeders or judges on this subject. Maybe, somewhere out there, someone will have an answer for me as well as any others who may have noticed the same phenomenon.

Every so often I discover that I have a Dutch that seems to be in "permanent" moult. The animal is usually a buck, and is usually an animal with very thick fur. Once this animal goes into his first moult at about five months of age, he never seems to stop moulting, and never regains a well conditioned coat. I have tried consistent grooming, which usually results in mounds of fur, but, a few days later, it's as bad as ever. Occasionally the animal will get thick mats of fur that have to be cut off and sometimes these animals appear to have a "mohawk" down their backs in that the fur protrudes an inch or so higher than its usual height. Removing this fur yields normal height fur, which then, in short order, starts protruding again. The only conclusion that I have come to is that, by the time the thick, old fur becomes loose, new fur is already growing up under it, and the new fur becomes loose as soon as the old fur is removed. This phenomenon has not been isolated within a certain variety as I have seen it on my blues, blacks, grays, and steels.

This problem is particularly frustrating on an animal that has shown particularly well, and needs only a senior leg to become a grand champion. Naturally, with such a bad, consistent moult problem, they rarely seem to be able to obtain this final leg.

Does anyone else have this problem? Have you found a solution? Would a supplemental feed help? I'd certainly like to hear from anyone with some ideas!

Leach Offset, Inc.

Commercial Web Printers

Capabilities:

- Tabloids
- Newspapers
- Booklets
- Inserts

401 West Howard St., P.O. Box 654
Pontiac, IL 61764
(815) 844-6046

Facilities:

- Typesetting and Composition
- Complete Pre-Press Dept. from b/w to 4/color, camera, stripping and plating needs
- Goss Community Web
- On-Line Gluer
- Folder
- Trimmers
- Complete Mailing Department

JUDGE AND REGISTRAR LISTING

DICK GEHR
190 N. First Ave.
Coal City, Il. 60418
Phone: (815) 634-3008

2/91 :

• 533

8/90

TAMMY LOOMIS
399 - 61st St. N.W.
Albuquerque, N.M. 87105
ARBA Registrar & Judge • 568
(505)-836-4220

12/90

LARRY BENGTON
Route 1 Box 95
Lewiston, Mn. 55952
Phone: 507-864-2103 • 387



"YOU CAN'T BEAT THE DUTCH"

1 9 9 0 N A T I O N A L D U T C H S H O W Y O U T H

Show Date 4/28-4/29-1990 ARRAD DE4253 APRCS 710NY
 Sponsoring Club NEW ENGLAND DUTCH RC / NDS
 Show Location NORTH HAVEN, CONNECTICUT
 Show Secretary Name PAM DUNNING
 Address 249 OLD WESTFORD RD
 City CHELMSFORD State MA ZIP 01824
 Dutch Judge & License Number KARL FHOIS
 Number of Dutch in show 139
 Best Dutch Amy Minter, Black Jr Buck

(owner, class, variety & sex)
 Best Opp. Dutch Kim Cassell, Blue Sr Doe
 (owner, class, variety & sex)

Was Best Dutch "Best in Show"? YES

EXHIBITORS [GIVE COMPLETE NAME, ADDRESS AND ZIP CODE]

1. Amy + Brian Minter - 7465 Calkins Rd - Flint MI 488
2. Laura + Jennifer Black - 2576 Shady Lane - Milford, MI
3. Jefferay + Heather Blanchard - 29 Rimrock Dr - Beichertown, OH
4. Jessica Marie Smith - 120 Fredrick St - Doylestown, OH
5. Olivia Goguen - RR1 Box 85 Lake Rd - Brookfield, MA
6. Alison Hartman - 106 Oakley Dr - N. Syracuse, NY
7. Katie Riley - 186 Newtown Rd - Marston Mills, NY
8. Jefferay S. Andrews - 325 Hamilton St - Albion, NY
9. Kim Cassell - 226 Western Ave - Shatburn, MA 011
10. Shana Powers - 210 W Section St - Milford, IN 46
11. Derek Sugalski - 153 Westminster Rd - Hubbardston
12. Shawn Stenson - 2501 Antica Cir Rd - Warsaw, NY
13. A Brad Stockmaster - 523 S. Main St - Clyde, OH 434
14. Lori Blat - RD 4 Box 89 - Bernville, PA 17006
15. Abby Mullinax - 105A East View Dr - Lincoln, IA
16. Tammy Wise - 8633 Flick Rd - Tipp City, OH 4537

No. Black Dutch 36 Best Black JR B Best Opp. Black Sr D
 (class & sex)
 No. Senior Bucks 11 No. Senior Does 13
 1. Shawn Stenson 1. Kim Cassell
 2. Tammy Wise 2. Amy Minter
 3. Kim Cassell 3. Kim Cassell
 4. Amy Minter 4. Abby Mullinax
 5. Amy Minter 5. Abby Mullinax

No. Junior Bucks 8 No. Junior Does 4
 1. Amy Minter 1. Abby Mullinax
 2. Jessica Marie Smith 2. Jefferay Andrews
 3. Heather Blanchard 3. A Brad Stockmaster
 4. Derek Sugalski 4. A Brad Stockmaster
 5. Abby Mullinax 5. _____

No. Blue Dutch 22 Best Blue Sr B Best Opp. Blue Sr D
 (class & sex)

No. Senior Bucks 10 No. Senior Does 7
 1. Amy Minter 1. Kim Cassell
 2. Shawn Stenson 2. Derek Sugalski
 3. Tammy Wise 3. Amy Minter
 4. Kim Cassell 4. Amy Minter
 5. Derek Sugalski 5. Shana Powers

No. Junior Bucks 2 No. Junior Does 3
 1. Alison Hartman 1. Tammy Wise
 2. Lori Blat 2. Tammy Wise
 3. _____ 3. Derek Sugalski
 4. _____ 4. _____
 5. _____ 5. _____

* Be certain to list all disqualified & eliminated rabbits.

1990 NATIONAL DUTCH SHOW YOUTH

No. Choc. Dutch 26 Best Choc. SR B Best Opp. Choc. JR D
(class & sex) (class & sex)

- No. Senior Bucks 11 No. Senior Does 7
1. TAMMY WISE
 2. AMY MINTER
 3. AMY MINTER
 4. TAMMY WISE
 5. TAMMY WISE

- No. Junior Bucks 5 No. Junior Does 3
1. JENNIFER BLACK
 2. AMY MINTER
 3. SHANA POWERS
 4. JEFFREY BLANCHARD
 5. A BRAD STOCKMASTER

No. Tort. Dutch 18 Best Tort. JR B Best Opp. Tort. SR D
(class & sex) (class & sex)

- No. Senior Bucks 10 No. Senior Does 3
1. PAULA BLACK
 2. ABBY MULLINAX
 3. AMY MINTER
 4. JEFFREY ANDREWS
 5. JEFFREY BLANCHARD

- No. Junior Bucks 3 No. Junior Does 2
1. SHAWN STENSON
 2. AMY MINTER
 3. ABBY MULLINAX
 4. _____
 5. _____

No. Steel Dutch 9 Best Steel JR D Best Opp. Steel SR B
(class & sex) (class & sex)

- No. Senior Bucks 5 No. Senior Does 2
1. JEFFREY ANDREWS
 2. ABBY MULLINAX
 3. TAMMY WISE
 4. ELIM
 5. ELIM

- No. Junior Bucks 0 No. Junior Does 2
1. ABBY MULLINAX
 2. A BRAD STOCKMASTER
 3. _____
 4. _____
 5. _____

No. Gray Dutch 20 Best Gray SR D Best Opp. Gray SR L
(class & sex) (class & sex)

- No. Senior Bucks 6 No. Senior Does 6
1. TAMMY WISE
 2. TAMMY WISE
 3. SHANA POWERS
 4. A BRAD STOCKMASTER
 5. KIM CASSELL

- No. Junior Bucks 0 No. Junior Does 6
1. _____
 2. _____
 3. _____
 4. _____
 5. _____

Thank you for sanctioning Dutch! Fill out form completely and return within 30 days to: KEVIN HOOPER 585 CHERRYBEND / WILMINGTON, OH. 45177

MORE ABOUT THE STEEL DUTCH

BY Sue Barlow

Through test breedings and pedigree research Kevin Hooper and I are beginning to identify the genetic differences that produce some of the variation in the steel coloring. Many breeders are already aware of the breeding methods that will produce the best colored steels, but this article is being written in the simplest terms for those who swear they cannot understand genetics. The width of the band is controlled by genes that may also be subject to modifying factors, and will not be discussed here. The tortoise and chocolate colors, and the variations that can result when crossed with other colors, is also not discussed.

In order to understand the variation in the steel color we must first have an understanding of the basic inheritance of color in the Dutch rabbit. Although the color of a rabbit is the result of many gene combinations and modifiers, a basic understanding can be gained by knowing only a few simple terms.

The name given to the color of a Dutch rabbit should reflect its genetic makeup. When we speak of a blue Dutch we should mean an animal that is blue in color AND has the genetic makeup of aa B_{dd} EE. There can be Dutch that are blue in color but have a different genetic makeup and these should be referred to in terms which indicate their genetic makeup. Likewise the term Steel should be used only for an animal that carries a steel gene (E^S). True genetic Steels cannot be made. A steel colored Dutch (Steel Mosaic) can be made by crossing grays, torts, and blues, but they will not reproduce with the same genetic frequency as the true Steels.

Genes occur in pairs (alleles), and each parent contributes one gene of a pair to its offspring. A dominant gene, designated by a capital letter (X) is one that shows an effect in spite of the allele (partner) that is present. The genotype (the actual genes present) of an animal can be (XX) or (Xx), and the phenotype (what is seen) will be the same dominant trait in both cases. In order for a recessive trait to be expressed, both recessive genes must be present and is designated by (xx). A gene is said to be

incompletely dominant if when dominant and recessive alleles are present (Xx) the phenotype is different than the phenotype of either a pure dominant or pure recessive trait. The colors, Black, Blue, Steel and Gray can be discussed by using only four sets of genes designated A, B, D and E. The gray and steel Dutch are agouti (A_{-}) rabbits and the black and blue Dutch are non-agouti (aa). Agouti is defined as a hairshaft possessing three or more bands of color.

The wild type coloration of the agouti rabbit is the result of the genetic formula (AA BB DD EE). The overall color of the fur of the agouti rabbit is due to a mixture of several forms of parti-colored hairs of two primary structural types. Firstly, of long over-hanging guard hairs, and secondly of shorter hairs comprising the bulk of the pelage. The long primary guard hairs are black throughout their length, appearing intensely dark at the tip but shading to blue towards the base. The shorter fur is differentiated into secondary guard hairs and the more numerous fur fibers. The secondary guard hairs are also tipped black and shade gradually to blue but sub-distally (toward the tip) they are transversed by a band of yellow. The fur fibers are blue at the base and banded yellow at the top. The ring pattern observed in the agouti is the result of the combination of dark hairs and yellow bands on hairs of different lengths.

The Steel is basically an agouti rabbit with the addition of a gene designated as E^S . This extension gene is a dominant gene that extends the amount of black pigment, tends to reduce the amount of agouti banding and also darkens the white belly. The steel gene (E^S) is like a dark colored glove which covers only part of the hair leaving the outermost band still visible. Steels are born black since only the tips of the hairs are visible. It is not until the hair is of sufficient length to allow the banded portion to show that the Steel becomes identifiable. On the Steel Dutch that we have observed the secondary guard hairs are banded and color ranges from yellow to almost white depending on the other genes that are present in an animal.

The blue and black Dutch carry the genes designated (aa) or non-agouti. A black Dutch of pure breeding would be of the genotype (aa BB DD EE). A mutation known as dilute and represented by the symbol (d) is known to occur in rabbits and dilutes the black to blue, the yellow to beige, and the chocolate to lilac. In the non-agouti Dutch the presence of (d) is only shown when the (dd) is present thus blue Dutch would be of the genotype (aa BB dd EE). Black rabbits can be of the genotype (aa BB Dd EE) and the

presence of the (d) is not visible because the (D) is dominant however animals of this genotype will when bred to blues produce both blacks and blues.

The Steel Dutch that we have observed that are of the genotype (AA BB DD E^SE) are the steels that have a yellow or brassy tinge, partially due to the color of the band that remains on the steel in spite of the extension gene. A Steel of pure steel breeding crossed to a non-agouti blue will produce Steels of the genotype (Aa BB Dd E^SE) and Grays of the genotype (Aa BB Dd EE). The presence of the combination of the non-agouti gene and the dilute gene alters the phenotype of Grays and Steels. While the Grays would not make good show animals because of their diluted color the Steels are drawing favorable comments from exhibitors and judges. In these Grays the yellow bands are faded (diluted) and the ring pattern is not as intense as the true agouti. The Steels that we have examined from this cross of the genotype (Aa BB Dd E^SE) have an even body color and light colored bands that are less yellow than Steels of the (AA BB DD E^SE) genotype. While the tips of the guard hairs on (Dd) steels are undoubtedly diluted it is the band of light color that steel breeders wait breathlessly to see appear on those black babies in the nest box. It is the band of pale color on the dark background that gives the Steel its unique coloration, not the "moderate amount of light gray tipped guard hairs" as stated in the Standard of Perfection.

It is possible to produce Steels and Grays that carry the (dd) genes by breeding Steels and Grays that carry the (d) gene to: 1) Steels and Grays of like genotype, 2) Blues, or 3) Blacks carrying the dilute gene. Steels of the genotype Aa BB dd E^SE are a silvery blue color and close examination of the secondary guard hairs reveals a light band. The grays of the genotype Aa BB dd EE are homozygous dilute grays and the pattern of color is identical to normal colored grays (ie. having no obvious undercut) but these animals are blue in color. Since these blue steels and blue grays carry the same (dd) as the non-agouti blues they could be used to introduce or maintain the dilute gene in a steel line instead of being discarded as freaks.

And now that it sounds as if it is so very easy to breed good colored Steels it must be mentioned that because of the numerous genetic combinations it is possible that your litters may also contain (AA Dd, AA dd) grays and steels, non-agouti blacks and blues, non-agouti blacks and blues that carry

the E^S (Steel extension) gene to mention only a few. Some of these resulting phenotypes are colors that may not be desirable as show animals. The more possible colors that can be produced from a cross the less the chances are that you will get one specific color in your litter. It is possible however by pedigree research and test breeding to select animals for crosses that will produce a minimum of unwanted colors.

Dutch Youth Standings 7-9-90

<u>Exhibitor</u>	<u>State</u>	<u>Shows Attended</u>	<u>Points Earned</u>
1. Timothy Berry	TX	8	2799
2. Amy Minter	MI	9	2608.5
3. C. Felabom	IN	8	2435
4. Derek Sugalski	MA	6	1037.5
5. Lisa Burnham	MI	6	888
6. Eric Meyer	IN	9	566
7. Danielle Beuttel	MA	6	490.5
8. Tammy Wise	OH	3	427
9. Bob Vanecek	TX	6	412
10. Shana Powers	IN	6	410
11. Chad Mastbergen	MN	5	398
12. Kim Cassell	MA	2	373.5
13. Amy Wood	TX	2	367
14. Larry Landry Jr	LA	4	342
15. Jeff Saastad	MN	6	336.5
16. Sarah Cunningham	IL	5	314
17. Abby Mullinax	NC	1	272
18. Jennifer Black	MI	5	219
19. Heather Blanchard	MA	5	217
20. Alice Ness	WA	1	182

Youth Report

4-1 Lake Erie RBA at Oak Harbor OH--6 Dutch--Judge H Keller--All winners NM
4-1 Mississippi Valley RBA at Dewitt IA--9 Dutch--Judge R Steinberg--All winners NM

4-1 Freestate Domestic RC at Jefferson MD--1 Dutch--Judge J Pugh--BOB Choc SB Lish

4-1 Springfield RBC Inc at Chatham IL--16 Dutch--Judge H Conrad--BOB Black JD Meyer--BOS Tort JB Meyer--1 Black JD Meyer--4 Blue SD NM--4 Choc SD Cunningham--3 Tort JD Meyer 3 Steel JD Cunningham--1 Gray JD Cunningham

4-1 Portsmouth RBA at Lucasville OH--8 Dutch--Judge V Samaras--All winners NM

4-1 Western Massachusetts RBA at Ludlow MA--37 Dutch--Judge P Jurgelonis--BOB Blue JD Sugalski--BOS Blue SB Sugalski--14 Black JB Blanchard--13 Blue JD Sugalski 3 Choc JD Sugalski--5 Tort SB Blanchard--2 Gray JB NM

Best In Show
Congratulations

4-7 South Eastern Michigan R+CBA at Saline MI--37 Dutch--Judge H Guthrie--BOB ?? SB Minter--BOS ?? SD Minter--13 Black SB Minter--2 Blue SB Minter--9 Choc SB Minter--4 Tort SB Black--1 Steel JB Burnham--8 Gray JB Burnham

4-7 Friendly Rabbit Club at Winona MN--38 Dutch--Judge G Grimm--BOB Choc SB NM--BOS Blue SD Saastad--11 Black SB Saastad--7 Blue SD Saastad--7 Choc SB NM--11 Tort SD NM 2 Gray SD NM

4-7 Jacksonville RBA at Green Cove Springs FL--5 Dutch--Judge C Alexander--All winners NM

4-7 Oklahoma RBA at Newalla OK--2 Dutch--Judge H Buchanan--All NM

4-7/8 Midwest Trailblazers RC at Sedalia MO--11 Dutch--Judge B Dodge--BOB Blue SD K Gray--BOS Black SB K Gray--2 Black SB K Gray--1 Blue SD K Gray--4 Choc SD G Gray Jr 2 Tort SD G Gray Jr--1 Steel SB G Gray Jr--1 Gray SD G Gray

4-7/8 Texas RBA at Belton TX--37 Dutch--Judge T Loomis--BOB Black SD Berry--BOS Black SB Berry--15 Black SD Berry--10 Blue JD Vanecek--4 Choc SD NM--4 Tort SB NM--1 Steel SB Vanecek--3 Gray SB Wood

4-8 Tibbar RBA at New Lenox IL--12 Dutch--Judge H Conrad--BOB Tort JD Meyer--BOS Tort JB Meyer--3 Black JD Meyer--4 Blue SB NM--1 Choc SB NM--3 Tort JD Meyer--1 Gray SB NM

4-8 Fairfield County RBA at Fairfield CT--19 Dutch--Judge L Engel--All winners NM

4-14 Tri County RBA at Kalamazoo MI--31 Dutch--Judge R Shaftoe--BOB Black SB Minter--BOS Blue SD Minter--9 Black SB Minter--6 Blue SB Minter--9 Choc SB Minter--4 Tort SB Minter 1 Steel SB K Van Niman--2 Gray SB K Van Niman

4-14 Champlain Valley RSCBA at Westford VT--13 Dutch--Judge H Errose--BOB Black SB NM--BOS Black JD Beuttel--7 Black SB NM 1 Blue SD NM--5 Tort SD Beuttel

4-21 Golden Prairie RBA at Lafayette IN--28 Dutch--Judge D Hauser--BOB Choc SB Felabom--BOS Gray SD Felabom--4 Black JD Jenkins--5 Blue JD NM--6 Choc SB Felabom--6 Tort JD Jenkins 2 Steel SB Felabom--5 Gray SD Felabom

4-21 Flathead RBA at Kalispell MT--15 Dutch--Judge P Butcher BOB Tort JB K Norwood--BOS Tort SD K Norwood--5 Black SB K Norwood--1 Blue SB Rinck--1 Choc SB Rinck--5 Tort JB K Norwood--2 Gray SD Rinck

4-21 East Ohio RBA at Cortland OH--9 Dutch--Judge V Samaras--BOB Black SD NM--BOS Blue SB Dobbins--6 Black SD NM--2 Blue SB Dobbins

4-21 San Antonio RBA at Pleasanton TX--28 Dutch--Judge M Crawford--BOB Black JB Berry--BOS Black JD Berry--20 Black JB Berry--6 Blue JD Berry--1 Choc SB Vanecek--1 Steel SB Vanecek

4-21 San Juan RBA at Farmington NM--5 Dutch--Judge W Carlton BOB Black JB NM--BOS Black SD Dunn--5 Black JB NM

4-21 Worcester County RBA at Sturbridge MA--35 Dutch--Judge R Kuehnle--BOB Black JB NM--BOS Gray SD NM--16 Black JB NM--9 Blue SB Sugalski--3 Choc JD Sugalski--3 Tort SB Blanchard 3 Gray SD NM

Youth Report

4-21 Stanislaus Youth RA at Turlock CA--25 Dutch--Judge??
BOB Blue SB Kelly--BOS Blue SD Kelly--9 Black SB leyman--
13 Blue SB Kelly--3 Choc JB NM--5 Tort SB NM--1 Steel SB
NM--1 Gray SB NM

4-21 South Central Michigan at Mason MI--28 Dutch--Judge
Bowcamp--BOB Black SB Minter--BOS Black JD Burnham--10
Black SB Minter--3 Blue JB Minter--5 Choc JB J Black--
2 Tort SB P Black--2 Steel JB Burnham--6 Gray JB Burnham

4-21 Two Rivers RC of OK at El Reno OK--9 Dutch--Judge
Pulliam--All winners NM

4-22 Central Maine RBA at Richmond ME--9 Dutch--Judge B
Burdick--All winners NM

4-22 Decatur Area RBA at Decatur IL--24 Dutch--Judge O Rey-
nolds--BOB Black JD Meyer--BOS Black SB NM--12 Black JD
Meyer--1 Blue JD Jenkins--3 Choc SD Cunningham--3 Tort
SD Meyer--4 Steel JB Cunningham--1 Gray JD Cunningham

4-22 South West Colorado RBA at Farmington NM--5 Dutch--
Judge T Loomis--All winners NM

4-22 Akron Rabbit Club at Tallmadge OH--4 Dutch--Judge
H Krahl--BOB Black JB Smith

4-28 Dixieland Ranch RC at Yoakum TX--40 Dutch--Judge M
Etter--BOB Black SB Berry--BOS Black SD Berry--20 Black
SB Berry--12 Blue SD Berry--5 Choc JD Vanecek--2 Steel
JD Berry--1 Gray SD McKown

4-28 Long Island RBA at Holtsville Long Island NY--3
Dutch--Judge R Shaftoe--BOB Black SB Schnider--BOS Blue
JD NM--2 Black SB Schnider

4-28 Happy Hoppers Youth RC at Moses Lake WA--38 Dutch--
Judge J Sennes--BOB Blue JD NM--BOS Blue JB NM--9 Black
JD Ness--11 Blue JD NM--2 Choc SD Faulkes--5 Tort SB
Faulkes--9 Steel SD NM--2 Gray JD NM

4-28 Centennial R+CBA at Norman OK--13 Dutch Judge H
Buchanon--All winners NM

4-28 Greater Vermont R+CBA at Berlin VT--12 Dutch--Judge
P Jurgelonis--All winners NM

4-28 Hop 2 It RBA at Marshall MI--17 Dutch--Judge R Marus-
chak--All winners NM

4-28 Madison County RC at Alexandria IN--39 Dutch--Judge M
Wunduln--BOB Black JD Felabom--BOS Black JB NM--10 Black
JD Felabom--4 Blue SB NM--7 Choc SB Felabom--8 Tort JD NM--
3 Steel SD Felabom--7 Gray SB Felabom

4-28/29 New England Dutch RC 'National Dutch Show' at North
Haven CT--139 Dutch--Judge K Ehnis--BOB Black JB Minter--
BOS Blue SD Cassell--36 Black JB Minter--22 Blue SB Minter--
26 Choc SB Wise--18 Tort JB Stenson--9 Steel JD Mullinax--
20 Gray SD NM

4-29 Cedar Rapids RB Inc at Central City IA--13 Dutch--Judge
C Dick--All winners NM

4-29 Whitewater Valley RBA at Connersville IN--20 Dutch--
Judge C Vallance--BOB Gray SD Felabom--BOS Black SB Felabom--
4 Black SB Felabom--2 Blue JD NM--3 Choc SB Felabom--3 Tort
SD Felabom--2 Steel SB Felabom--5 Gray SD Felabom

4-29 Livingston County RBA at Pontiac IL--14 Dutch-- Judge
I Miller--BOB Tort SD Meyer--BOS Tort JB Meyer--7 Black
JB NM--4 Tort SD Meyer--3 Gray JD Thorson

Best 4 Class
Congratulations

5-5 Owatonna Area RC at Owatonna MN--43 Dutch--Judge R Gehr--
BOB Black JD Saastad--BOS Black JB Mastbergen--15 Black JD
Saastad--9 Blue SD Saastad--3 Choc SB NM--7 Tort JD Bengtson
9 Gray SD NM

5-5 Lake Shore RBA at Muskegon MI--30 Dutch--Judge W Bouwkamp
BOB Black JD Felabom--BOS Gray SB Felabom--5 Black JD Fela-
bom--7 Blue SD Felabom--2 Choc SB Felabom--4 Tort SB Felabom
5 Steel SB Felabom--7 Gray SB Felabom

5-5 Saratoga Co No Nose Wigglers at Saratoga Fairgrounds NY--
12 Dutch--Judge R Cota--All winners NM

5-5 North East Ohio RF at Jefferson OH--5 Dutch--Judge C Hay-
how--BOB Blue SB Dobbins--BOS Blue SD Dobbins--1 Black SD
Dobbins--3 Blue SB Dobbins--1 Choc SB NM

Youth Report

- 5-5 Pearl River Co RBA at Picayune MS--18 Dutch--Judge
L Traush--BOB Black JD NM--BOS Black JB NM--11 Black JD
NM--4 Blue JD Landry--1 Choc JD NM--2 Gray SD Landry
- 5-5 Berks County R+CBA at Leesport PA--22 Dutch--Judge
A Butler--All winners NM
- 5-6 North Central Missouri RC at Holt MO--5 Dutch--
Judge P Naylor--BOB Choc SD G Gray Jr--BOS Black SB
K Gray--3 Black SD K Gray--1 Blue SD K Gray--1 Choc SD
G Gray Jr
- 5-6 Waterloo Area RB at Waterloo IA--22 Dutch--Judge R
Wallace--All winners NM
- 5-6 Central Wisconsin RBA at Marshfield WI--18 Dutch--
Judge R Gehr--All winners NM
- 5-6 South Western Ohio RBA at Xenia OH--8 Dutch--Judge
R Swartz--BOB Blue JD Nelson--BOS Black SB Nelson--5
Black SB Nelson--3 Blue JD Nelson
- 5-12 St Joe Valley R+CC at Argos IN--55 Dutch--Judge Dr
T Reed--BOB Black JB NM--BOS Gray SD Felabom--16 Black
JB NM--14 Blue SD Felabom--5 Choc JB Felabom--5 Tort SB
NM--4 Steel SB Felabom--11 Gray SD Felabom
- 5-12 South Western Minnesota RC at Reading MN--29 Dutch--
Judge ??? --BOB Black JD Saastad--BOS Black JB Mastbergen
1 Choc JB NM--1 Tort SD NM--6 Gray JD NM
- 5-12 Western Michigan RBA at Lowell MI--33 Dutch--Judge
M Henry--BOB Black SD Minter--BOS Black SB Minter--10
Black SD Minter--5 Blue SB Minter--9 Choc JD Minter--
3 Tort SB Minter--2 Steel JB Burnham--4 Gray JD Minter
- 5-12 Cape Cod R+CBA at Topsfield MA--32 Dutch--Judge A
Burke--BOB Black SD Beuttel--BOS Tort SB NM--16 Black
SD Beuttel--8 Blue SB Sugalski--6 Tort SB NM--2 Gray JB NM
- 5-12 Central Texas Rabbit Club at Austin TX--33 Dutch--
Judge W Gibson--BOB Steel JD Berry--BOS Black JB Berry--
16 Black JD Berry--10 Blue JD Vanecek--4 Choc SD Berry--
2 Tort JD NM--1 Steel JD Berry
- 5-19 Suburban Twins RC at Farmington MN--34 Dutch--Judge R
Koch--BOB Gray SD NM--BOS Black JB Mastbergen--15 Black JD
Saastad--9 Blue SB NM--2 Choc SB Vadis--2 Tort SD NM--6 Gray
SD NM
- 5-19 Copperas Cove Rabbit Fest at Copperas Cove TX--31 Dutch--
Judge R Lawrence--BOB Black SD Berry--BOS Tort SB NM--16 Black
SD Berry--8 Blue JD Vanecek--4 Choc JD Berry--2 Tort SB NM--
1 Steel JD Berry
- 5-19 Saginaw Valley R+CB at Saginaw MI--30 Dutch--Judge J Welt-
evreden--BOB Tort SB Minter--BOS Black SD Minter--9 Black SB
Minter--1 Blue SB Minter--6 Choc SB Minter--5 Tort SB Minter--
2 Steel SD Burnham--7 Gray SB Burnham
- 5-20 Ohio State RBA Convention at Columbus OH--9 Dutch-- Judge
J Frezzel--BOB Black SD Lynch--BOS Black SB NM--4 Black SD
Lynch--4 Blue JB Wise--1 Choc SB Wise
- 5-20 Kankakee Valley RB Inc at Kankakee IL--20 Dutch--Judge
Dr T Reed--BOB Black JD Meyer--BOS Tort JB Meyer--6 Black JD
Meyer--2 Blue SB Wiechman--1 Choc JD Cunningham--6 Tort SD
Meyer--3 Steel SD Cunningham--2 Gray JD Cunningham
- 5-26 Silver Dollar Fair at Chico CA--17 Dutch--Judge D Tschantz
All winners NM
- 5-26 Hare Raisers Youth 4-H Club at West Friendship MD--9 Dutch
Judge O Yates--BOB Steel SB NM--BOS Steel SD NM--2 Black SD NM
2 Blue DQ--1 Choc SB Lish--1 Tort DQ--2 Steel SB NM--1 Gray SD NM
- 5-26 Hoosier Dutch Rabbit Fanciers at Huntington IN--82 Dutch--
Judge S Freed--BOB Black SD Minter--BOS Gray SB Jones--23 Black
SD Minter--10 Blue SD Minter--14 Choc JD Minter--18 Tort SD
Meyer--4 Steel SB NM--12 Gray SB Jones
- 5-27 Bunny Hoppers 4-H Club at Rutland VT--16 Dutch--Judge P
Jurgelonis--BOB Choc SD NM--BOS Choc JB Hershberger--10 Black
JD NM--1 Blue SB NM--3 Choc SD NM--2 Gray JB NM
- 6-2 Contra Costa Youth RP at Pleasant Hill CA--3 Dutch--Judge
D Tschantz--All winners NM
- 6-8 Richland Co RBA at Mansfield OH--1 Dutch--Judge H Keller--
Winner NM
- 6-9 Sunflower RBA at Andover KS--11 Dutch--Judge S Pulliam--
BOB Black SD Long--BOS Black JB Irwin--3 Black SD Long--3 Blue
SD McCauley--3 Choc JB NM--2 Gray SD NM

NAME	STATE	# OF SHOWS	POINTS
1. F&K MULLINAX	NC	12	5768.5
2. M&J MILLS	TX	11	3319.5
3. J&F SCHESSLER	CA	10	2803.5
4. W CARLTON	AZ	8	2621.5
5. K&D EMERSON	NY	11	2560
6. K KRAL	IL	13	2559
7. R&K SHULL	IN	10	2350.5
8. A MICALLEF	MI	6	2345
9. SCHILLING & VECCHIO	NY	7	2251.5
10. A BARTON	OH	8	1919
11. S ESTERLY	PA	10	1912
12. A MILLER	IN	6	1845.5
13. K HOOPER	OH	8	1833.5
14. E HEWSON	IN	7	1656
15. K CUMMINGS	IN	8	1514.5
16. T URAN	OH	6	1488.5
17. T WISE	OH	7	1302.5
18. G&M HAMERSLEY	MD	7	1248.5
19. W MACKINNON	MA	6	1184.5
20. J PURPUS	CA	11	1124

- 2-25 Eastern Main RBA at Carmel ME--Show Cancelled
- 3-17 Lake Co RBA at CA 28 Dutch Judge D Carnahan
 Bob Tort JD NM BOS Tort SB J & F Schettler--
 8 Blk JD Schettler--6 Blue JD Schettler--
 4 Choc JD Schettler--3 Gray JB Schettler
- 3-18 Kiam Egyptian RBA at Marion IL II Dutch Judge I
 Miller
 All NM
- 3-25 Tri Co RBA at Waukesha WI 44 Dutch Judge R Steinberg--
 Bob Blue SD R Guetschow--BOS Blk SB D Guestchow--
 19 Blk SR D Guetschow--12 Blue SD R Guetschow--
 4 Choc SB R Guetschow--2 Tort SB R Guetschow--
 2 Steel SR R Guetschow--5 Gray SD_R Guetschow
- 3-25 Maine ST RBA at Hallowell ME 39 Dutch Judge M
 Cavaco--
 Bob Blk SD W Mackinnon--BOS Blk SB C McDevitt--
 15 Blk SD Mackinnon--6 Blue SB Mackinnon--5 Choc
 S R McDevitt--13 Tort SR K Sinalaki

4-07 Forrest City REC at Dorchester ONT 26 Dutch Judge
G Fellers--
Winners All NM

4-07 Friendly RC at Winona MN 32 Dutch Judge M Avesing--
Bob Blue SR R Guetschow--ROS Blk JD J Bech--14
Blk JD Bech--8 Blue SB Guetschow--3 Tort JD
Guetschow--5 Steel SB Guetschow--2 Gray JB Bech

4-07 SE Michigan ROCRA at Saline MI 39 Dutch Judge H
Guthrie--
JD Micallef--7 Blue SB Micallef--9 Choc SB S Yost--
9 Tort JD Micallef--1 Steel SD NM

4-07 Southern West Virginia RBA at Kenawha W VA 42
Dutch Judge S Griffith--
ROB Blk JB G Morgan--BOS Blk SD E Fisher--22 Blk
JB Morgan--13 Blue SR Morgan--2 Tort JD Morgan--3
Steel SB Fisher--2 Gray SD V & M Dill

4-07 Lake Area RB at Lake Arthur LA 13 Dutch Judge K
McLinch--
BOB Choc SB B & D Rabb--ROS Blue SD B & D Rabb--
7 Blk SB A Louviere--4 Blue SD B & D Rabb--1 Choc
SB B & D Rabb--1 Tort (A)

4-07 Jacksonville RBA at Green Cove Springs FL 27 Dutch
Judge B Crosby--
BOB Tort SD R & C Haynie--ROS Blk JB NM--13 Blk JB
NM--5 Blue JD NM--5 Tort SD R & L Haynie--2 Steel
SB Haynie--2 Gray SD Haynie

44-07 Pecos Valley RBA at Roswell NM 11 Dutch Judge
B Lawrence--
BOB Choc SD Beckham--/Bunnies BOS Blk SB J Norris--
5 Blk SB J Norris--1 Choc SD Beckham--5 Gray JB
K Norris

4-07 Oklahoma RBA at Nowalla OK 1 Dutch Judge H Buchanan--
BOB Blk SD J Daly

4-07 San Gabriel Valley RA at Pomona CA Judge F Harper--
ROB Tort JD G & J Dobson--BOS Blk JB Dobson--14 Blk
JB Dobson--6 Choc JD NM--13 Tort JD Dobson

4-07 Big Horn River RB at Basin WY 19 Dutch Judge R
Denschl--
BOB Blk SD E Sutton--ROS Blk SB NM--11 Blk SD
Sutton--2 Blue JD NM--1 Choc JB B Durby--3 Tort
SB B Durby

4-07/08 Texas RBA at Belton TX 42 Dutch Judge T Thomas--
BOB Tort SD M & J Mills--BOS Blk JB J W Clifton--
15 Blk JB Clifton--9 Blue SD Clifton--6 Choc SD
Mills--5 Tort SD Mills--3 Steel JB Mills--4 Gray
JD Mills

4-08 Timber RBA at New Lenox IL 43 Dutch Judge H Conrad--
BOB Blk SB D Baird--ROS Blk SD E Corn--24 Blk SB
Baird--12 BlueSR Baird--3 Choc JB Kral--2 Tort JB
NM--2 Gray SR K Kral

4-01 Lake Erie RBA at Oak Harbor OH 35 Dutch Judge
H Keller--
Bob Blue SB T Uran--ROS Blk SD Uran--10 Blk
SD Uran--2 Blue SB Uran--5 Choc SD Uran--12
17 Tort SB Uran--2 Steel SB B Stockmaster--
Mississippi Valley RBA at Hewitt IA 68 Dutch
Judge R Steinberg--
Bob Blk JD NM--BOS Blk SR P Kiser--19 Blk JD
NM--17 Blue SB D Dowd--7 Choc SD NM--18 Tort
SD E Mixdorf--2 Steel SD Dowd--5 Gray SB Dowd

4-01 Portsmouth RBA at Lucasville OH 19 Dutch Judge
V Samaras--
Bob Blk JD A Barton--BOS Blue SB Barton--11 Blk
J D Barton--7 Blue JD Barton--7 Choc SR NM

4-01 Springfield REC at Chetlam IL 14 Dutch Judge
O Reynolds--
SB Kral--3 Blue JD Kral--4 Choc SB Kral--1 Tort
JB NM--1 Gray SR Kral

4-01 Western Mass RBA at Ludlow MA 16 Dutch Judge L
Engel--
Bob Blk JB N Carpenter--ROS Blk SD Carpenter--
10 Black JB Carpenter--1 Choc SD L Sherman--5 Tort
5 Tort SB K Sugalski

4-01 Mills Co RBA at Thupman IA 36 Dutch Judge R F
Wallace--
Bob Blk SR F Courtright--BOS Blue JD NM--17 Blk SR
Courtright--7 Blue JD NM--12 Choc JB L Simonsen--1
Tort SD S Peterman

4-01 Freestate Domestic RC at Jefferson MO 46 Dutch
Judge A Butler--
Bob Blk SB S Esterly--BOS Steel JD S Mack--13 Blk
SB Esterly--6 Blue JD J Pugh--12 Choc SB W McNamara--
3 Tort JB Esterly--4 Steel JD S Mack--8 Gray SB Mack

4-06 Pima Co Fair at Tucson AZ 35 Dutch Judge T Green--
Bob Steel SD W Carlton--ROS Gray SB Carlton--3 Blk
JB Carlton--6 Choc SB Carlton--9 Tort SB Carlton--
7 Steel SD Carlton--10 Gray SB Carlton

4-07 Yakima Valley RBA at Selah WA 31 Dutch Judge D
Matthews--
Bob Gray JD J Kuntz--ROS Choc JB NM--8 Blk JD
J & R Coffelt--10 Blue JB NM--1 Choc JB NM--1
Tort SR NM--6 Steel SD T Preston--5 Gray JD J Kuntz

4-07 Lewis Clark RBA at Moscow ID 12 Dutch Judge C
Wikizes--
Bob Tort SD K Norwood--BOS Tort SB Norwood--5 Blk
SB Norwood--7 Tort SD Norwood

4-07 Taughanack Area RB at Watkins Glen NY 84 Dutch
Judge J Richter--
BOB Blue JD Schilling & Vecchio--BOS Blue SB K & D
Emerson--29 Blk JB Emerson--17 Blue JD Schilling &
Vecchio--6 Choc SB J & R Andrews--21 Tort JD J
Pierce--3 Steel SB Schilling & Vecchio--8 Gray SD
Schilling & Vecchio

4-08 Fairfield Co RRA at Fairfield CN 34 Dutch Judge A
 Platt--
 BOB Blk SD W Mackinnon--BOS Blue SB M Pecaric--17
 SD Mackinnon--5 Blue SD C Decker--4 Choc JD NM--6
 Tort SD Pecaric--1 Steel SB W Geitzenhauer--1 Gray
 SR Geitzenhauer

4-14 Champion RC at Wheeling W VA 25 Dutch Judge M
 Janico--
 BOB Blk JD S Peters--BOS Blk SB J Gilley--12 Blk JD
 S Peters--12 Blue SD J Smith--1 Choc SB Smith

4-14 Champlain Valley RRA at Westford VT 1 Dutch Judge
 H Brose--
 BOB Blk JB E Charboneau
 Nebraska Tower RRA at Seward NE 19 Dutch Judge
 M Cole--
 BOB Gray SB D & D Crook--BOS Blk SD T Erwin--8 Blk
 SB NM--4 Choc SB L Starr--6 Tort SR Starr--1 Gray SB
 Crook

4-14 Tri CO RRA at Kalamazoo MI 14 Dutch Judge B Shaftoe--
 BOB Blk JB d Chushman--BOS Choc SD NM--2 Blk JB
 Chushman--4 Choc SD NM--8 Tort JD Z Balson

4-15 Rochester RRA at Henrietta NY 74 Dutch Judge J
 Green--
 BOB Blue JD J Pierce--BOS Blk SB Pierce--21 Blk JD
 K & D Emerson--1R Blue JD J Pierce--5 Choc SD
 Schilling & Vecchio--22 Tort SB S Stenson--2 Steel SB
 J & R Andrews--6 Gray SB Andres

4-21 Eastern Carolina RRA at Smithfield NC 49 Dutch
 Judge S Freed--
 BOB Blue JD NM--BOS Tort SB C & B Barnes--17 Blk
 SD Barnes--9 Blue JD NM--6 Choc SD Barnes--16 Tort
 SB Barnes

4-21 Falls Cities RRA at Charleston IN 18 Dutch Judge
 B Byrne--
 BOB Blk SD H Carmen--BOS Blk SB Carmen--8 Blk SD H
 Carmen--3 Blue JD D Bramble--5 Tort SB Cramer--2
 Gray JD S Adams

4-21 Crawford Co RRA at Bucyrus OH 15 Dutch Judge J L
 Collins--
 BOB Blue SD A Barton--BOS Blk SB J Nauman--8 Blk
 JD Barton--4 Blue SD Barton--2 Choc JD Mike's Rabb--
 1 Tort J B Nauman

4-21 Flathead RRA at Kalispell MI 15 Dutch Judge F
 Coffett--
 BOB Tort SR K Norwood--BOS Tort SD Norwood--5 Blk
 SB Norwood--1 Blue Disq--1 Choc SB NM--5 Tort SB
 Norwood--1 Steel Disq--2 Gray SB NM

4-21 Mid City RC at Yantion SD 9 Judge C Stelloh--
 All NM

4-21 Worcester Co RRA at Sturbridge MA 22 Dutch Judge
 B Purdick--
 BOB Blk SD W Mackinnon--BOS Blue JB N Carpentier--
 7 Blk SD Mackinnon--4 Blue JB Carp[entier]--11 Tort
 JD Mackinnon

4-21 River City RC at Yankton SD 10 Dutch Judge P Naylor--
 All NM

4-21 San Juan RRA at Farmington NM 20 Dutch Judge M
 Withrow--
 BOB Blue SR J & Aragon--BOS Blue JD W Carlton--4
 Blk SB NM--5 Blue SR Aragon--3 Choc SD Beckham--
 Bunnie 4 Tort SD NM--J Steel SB Carlton--3 Gray JD
 Carlton

4-21 Oregon League of RRA at Albany OR 38 Dutch Judge R
 Powell--
 BOB Blk JB NM--BOS Gray SD NM--14 Blk JB NM--8
 Blue JB NM--3 Choc SB NM--7 Tort JB J Patrick--1
 Steel JD NM--5 Gray SD NM

4-21 Golden Prairie RRA at Lafayette IN 27 Dutch Judge
 D Hauser--
 BOB Tort SR E Hansen--BOS Blk JD K Kral--8 Blk JD
 K Kral--7 Blue SB Kral--6 Choc JB Hansen--6 Tort
 SB Hansen

4-21 Bullitt Co RRA at Charleston IN 16 Dutch Judge T
 Walsh--
 BOB Blue JD D Bramble--BOS Tort SB NM--8 Blk JD
 S Adams--3 Blue D Bramble--5 Tort H Carman--2 Gray
 SD Bramble

4-21 San Antonio RRA at Plessanton TX 4 Dutch Judge F
 Farrow--
 BOB Blue SB NM--BOS Tort JD J Gordon--2 Blk DO--
 1 Blue SB NM--1 Tort JD Gordon

4-21 Nebraskaland RRA at Mitchell NE 24 Dutch Judge P
 Reamen--
 BOB Choc JD W Anderson--BOS Tort SB E Sutton--
 11 Blk JD NM--3 Blue SB N King--3 Choc JD Anderson--7
 Tort SR Sutton

4-21 South Central Michigan RRA at Mason MI 61 Dutch
 Judge W Bowkamp--
 BOB Tort JB E McKinley--BOS Blue SD A Micallef--21
 Blk SB NM--14 Blue SB NM--10 Choc JD McKinley--15
 Tort JD McKinley--1 Gray SD NM

4-21 Two Rivers RC at El Reno OK 17 Dutch Judge T Thomas--
 BOB Steel JD NM--BOS Blue JR M Rylant--2 Blk SD B &
 D Rabb--5 Blue JB Rylant--7 Choc SB B & D--2 Steel
 JD NM

4-21 East Ohio RRA at Cortland OH 26 Dutch Judge A
 Butler--
 BOB Choc SD B Glenn--BOS Tort SB Glenn--7 Blk
 JB P Lankins--1 Blue DO--7 Choc SD Glenn--8 Tort SB
 B Glenn--1 Steel SB J & R Andrews--2 Gray SR Andrews

4-22 Akron RC at Akron OH 46 Dutch Judge H Kral--
 BOB Gray SR L Nixon--BOS Blk SD M Ruck--13 Blk JR N
 Lombardi--14 Blue JB L Nixon--7 Choc SR J & R
 Andrews--3 Tort SR Jack's--2 Steel SR Andrews--7
 Gray SR Nixon

4-22 Southwest Colorado RRA at Farmington NM 29 Dutch
 Judge L Dees--
 BOB Blue JD W Carlton--BOS Blue JB Carlton--4 Blk JB
 NM--6 Blue JD Carlton--3 Choc SR Carlton--6 Tort
 JD Carlton--2 Steel SB Carlton--8 Gray JD Carlton

4-22 Decatur Area RBA at Decatur IL 6 Dutch Judge M
Avesing--All NM

4-22 Golden West RBA at Orange CA 37 Dutch Judge
G Grolli--
BOB Tort JD K Kumpers--BOS Steel JB J Purpus--15 Blk
JB R Lehman--3 Blue SD M Fadden--2 Choc SB NM--13
Tort JD Kumpers--2 Steel JD Purpus--3 Gray JB G & J
Tobson

4-22 Oregon League of RBA at Albany OR 51 Dutch Judge G
Gehr--
BOB Blk SB NM--BOS Gray SD NM--19 Blk SB NM--8 Blue
SR NM--4 Choc SB J Brenneman--8 Tort SR NM--1 Steel
JD NM--12 Gray SD NM

4-22 Van Wert Co RBA at Van Wert OH 81 Dutch Judge R
Waggoner--
BOB Blk JD T Uran--BOS Blk JB T Wise--27 Blk JD T
Uran--14 Blue JD R & K Shull--9 Choc SD Uran--21 Tort
SB K & V Roran--3 Steel SB Shull--7 Gray SR Wise

4-22 Salt City RBA at Hutchinson KS 10 Dutch Judge T
Thomas--
BOB Blue JB B Bergene--BOS Blk JD J & C Colborn--
5 Blk JD Colborn--3 Blue JB Bergene--1 Tort JD B
Evertson--1 Gray SB D & D Crook

4-22 Central Maine RBA at Richmond ME 9 Dutch Judge
M Cavaco--Winners All NM

4-22 Northwest Iowa RBA at Cherokee IA 86 Dutch Judge
G Trouba--
BOB Blk JD J Seastad--BOS Choc JB M Jackson--33
Blk JD Seastad--23 Blue JB NM--10 Choc JB Jackson--17
Tort JB E Mixdorf--2 Steel JR J Reck--1 Gray JR Rark

4-28 Central West Virginia RBA at Glenville W VA 14 Dutch
Judge H Rice--
BOB Blk JD E Fisher--BOS Blk JB Fisher--7 Blk JD
Fisher--3 Blue SB Fisher--3 Steel SB Fisher--1 Gray
SB Fisher

4-28 Centennial RBA at Norman OK 7 Dutch Judge B Sorreis--
BOB Blk JD J Daly--3 Blk JD Daly--2 Blue JD O Stahl--
2 Steel JD NM

4-28 South Plains RBA at Seminole TX 41 Dutch Judge T
Thomas--
BOB Gray SB K Norris--BOS Choc SD B & D Rabb--13 Blk
SD B & D Rabb--15 Blue JB NM--7 Choc SD B & D Rabb--
1 Tort SB NM--1 Steel SD Norris--4 Gray SR Norris

4-28 Long Island RBA at Holtsville NY 2 Dutch Judge G
Fellier--
BOB Blue SB NM--1 Blue SR NM--1 Choc SB T McManus
Greater VT RBA at Berlin VT 10 Dutch Judge E
Saczanek--
BOB Blue SB NM--BOS Tort SD NM--4 Blk SB C Sherman--
2 Blue SB NM--3 Tort SB NM

4-28 South Texas RBA at Yukum TX 46 Dutch Judge R Krause--
BOB Blk JB M & K Johnson--BOS Blk JD J Clifton--14 Blk
JB Johnson--7 Blue JB Clifton--6 Choc JB Johnson--10
Tort JB M & J Mills--2 Steel JB Mills--7 Gray JB Mills

4-28 Teays Valley RC at Chillicothe OH 13 Dutch Judge N
McNary--
BOB Blk SD K & V Rogan--BOS Blk SB Bogan--5 Blk SD
Bogan--4 Blue SD Rogan--2 Choc SB NM--2 Tort SB Bogan

4-28 Tri Co RC of PA 22 Dutch Judge A Rosendenz--
BOB Blk JB NM--BOS Blue SD R Miller--13 Blk JB NM--
4 Blue JB Miller--2 Choc JD NM--3 Tort JB NM--1 Steel
SB S Jensen

4-28 Hop ZI+ RBA at Marshall MI 10 Dutch Judge Marauschak--
ROB?--Box?--3 Blk SB E Vanniman--4 Blue SB D
Cushman--1 Choc JD Van Nimon--1 Steel SB Van Nimon--
1 Gray SB Van Nimon

4-28 Dixieland Dutch Re at Youkum TX 48 Dutch Judge M
Etter--
BOB Blk JB M & K Johnson--BOS Steel SD M & J Mills--
16 Blk JB Johnson--7 Blue JB Mills--6 Choc SB Mills--
10 Tort SD Mills--2 Steel SD Mills--7 Gray JB Mills

4-28 Central Virginia RBA at Fredricksburg VA 5 Dutch
Judge J Lemon--
BOB Choc JD NM--BOS Coc SB NM--1 Blue JD NM--2 Choc
JD NM--1 Tort SB D Underwood--1 Gray SB Underwood

4-28 Sandhills RBA at Seminole TX 47 Dutch Judge B
Lawrence--
BOB Blk JD R Clark--BOS Blk SB A Clark--17 Blk
JD R Clark--16 Blue SB NM--7 Choc SD Beckham--
Runnies 1 Tort SB NM--1 Steel SD K Norris--5 Gray SR
NM

4-28 Madison Co RC at Alexandria In 45 Dutch Judge M
D'Amico--
BOB Blk SD K Cummings--BOS Gray JB R & K Shull--13
Blk SD Cummings--11 Blue SR Cummings--10 Choc JB
Cummings--7 Tort JD E Henson--1 Steel SB Shull--
3 Gray JB Shull

4-28 Wine Country RBA at Watkins Glen NY 34 Dutch Judge
M Ropp--
BOB Blue JB P Kyle--BOS Blk SD J Guy Kendall--13
Blk SD Guy Kendall--9 Blue JB Kyle--4 Choc SB Kyle--
7 Tort SD Kyle--1 Gray SD Kyle

4-28 Fair City RC at Hines SD 11 Dutch Judge R Wallace--
All NM

4-29 Cedar Rapids RB at Central City IA 33 Dutch Judge
R Steinberg--
BOB Blk JD NM--BOS Choc SB NM--7 Blk JD NM--8 Blue
SD Mixdorf--7 Choc SB NM--6 Tort SD Mixdorf
Whitewater Valley RBA at Connersville IN 13 Dutch
Judge P Macy--
BOB Blue SB K Cummings--BOS Blk JD Cummings--5 Blk
JD Cummings--5 Blue SB Cummings--2 Choc JB Cummings--
1 Gray JR Cummings

4-29 Seacoast RBA at Belmont NH 1 Dutch Judge A Burke--
BOR Tort SD R Dixon

4-29 Livingston CO RBA at Pontiac IL 39 Dutch Judge I
Miller--
BOR Blue JD K Kral--8X Blue SB D Baird--14 Blk
SB Baird--13 Blue JD Kral--6 Choc JB Kral--4 Tort
SD NM--2 Gray SB Kral

5-05 North East Ohio at Jefferson OH 14 Dutch Judge
M D'Amico--
BOR Blk JD S Peters--BOS Blue JB Peters--8 Blk JD
Peters--3 Blue JB Peters--1 Choc JD NM--2 Tort SB
Ackerman

5-05 Rabbit Producers of Santa Clara at San Jose CA Judge
R Hasenpflug--
BOR Blk SD J & S Ryrom--BOS Steel JB J & R Schletter--
21 Blk SD Ryrom--17 Blue JB NM--16 Choc JD N Raetz--
6 Tort JD Schettler--7 Steel JB Schettler--9 Gray SD
J Giron

5-05 Northwest RBA at Monroe WA 32 Dutch Judge D Brok--
BOR Blue SB J & B Currie--BOS Gray JD J Kuntz--
10 Blk SB L. McGregor--10 Blue SB Currie--5 Choc JB
McGregor--1 Tort JD NM--5 Gray JD Kuntz

5-05 Northwest RB at Monroe WA 32 Dutch Judge A Germaine--
BOR Blue SB L & B Gregg--BOS Blue SD NM--11 Blk SB
Gregg--10 Blue SB Gregg--5 Choc SB Gregg--6 Gray JD
Kuntz

5-05 Pearl River Co RBA at Piquette MS 9 Dutch Judge L
Trausch--
BOR Blk JD B & D Raab--BOS Tort JB NM--4 Blk JD
B & D Raab--2 Blue SD NM--1 Choc JD R Stevenson--
2 Tort JB NM

5-05 Owatonna Area RC at Owatonna MN 23 Dutch Judge T
Thomas--
BOR Blk JB J Bach--BOS Tort SD E Mixdorf--8 Blk
JB Bach--6 Blue JD E Anderson--7 Tort SD Mixdorf--
1 Steel JB Bach--1 Gray DG

5-05 South Florida RBA at Bartow FL 23 Dutch Judge J
Kelly--
Winners All NM

5-05 South Florida at Bartow FL 23 Judge C Mickison--
BOR Blue JD NM--BOS Blk SR N May--17 Blk SB Mey--
6 Blue JD NM

5-05 Foothills RBA at Shelby NC 52 Dutch Judge B Rice--
BOR Blk JB F & K Mullinex--BOS Blue JD Mullinex--
13 Tort SD C Snyder--4 Steel SB Mullinex--7 Gray
SD Mullinex

5-05 California Dutch RC at San Jose CA 75 Dutch Judge
B Hershbach--
BOR Blue SD J & R Schettler--BOS Blk JB Ms Talbott--
18 Blk SD Talbott--17 Blue SD Schettler--19 Choc
SB N Raetz--8 Tort JB Schletter--5 Steel JB
Schettler--9 Gray SD T Giron

5-05 Blenverhas SCH RC at Mineral Wells W VA 21 Dutch
Judge G Johnson--
BOR Blk SB G Morgan--BOS Blue JD Morgan--13 Blk SB
Morgan--3 Blue SB Morgan--2 Choc SB G Miller--2 Tort
SB D Lilley
Best In Show! Best In Show!
Congratulations! Congratulations!

5-05 Fleur De Lys RC at Bedford Quebec 5 Dutch Judge A
Platt--All NM

5-05 Richmond RBA at Ashland VA 48 Dutch Judge S Freed--
BOR Blk SD R Wood--BOS Blk JB Wood--13 Blk SD Wood--
6 Blue SD J Pugh--10 Choc JD Wood--7 Tort SD C
Crawford--35 Steel SD D Underwood--4 Gray SD Wood

5-05 Lake Shore RBA at Muskegon MI 13 Dutch Judge W
Boskovic--
BOR Blk SB B Storey--BOS Blue SD Storey--1 Blk SR--
2 Blue SD Storey--3 Choc SD NM--3 Tort SB Storey--
2 Steel SB Storey--2 Gray SD Storey

5-05 Saratoga Co RB at Saratoga NY 11 Dutch Judge R Cota
BOR Blue SB K & D Emerson--BOS Blue SD Emerson--
2 Blk SB Emerson--5 Blue SB Emerson--3 Tort SB
Emerson

5-05 Sun Valley Dutch Fanciers at Escondido CA 58/
Dutch Judge F Harper--
BOR Gray JB J Purpus--BOS Tort SD J Dobson--16
Blk JB Purpus--9 Blue JB G & J Dobson--24 Tort SD
Dobson--4 Steel SB Purpus--5 Gray JB Purpus

5-05 Waterloo Area RB at Waterloo IA 43 Dutch Judge G
Grimm--
BOR Blk JB D Dowd--BOS Choc JR Doe L. Simonson--10
Blk JB Dowd--13 Blue SB Dowd--8 Choc JD Simonson--
7 Tort SD E Mixdorf--1 Steel SD Dowd

5-05 Southwestern Ohio RBA at Xenia OH 67 Dutch Judge B
Swartz--
BOR Blk JD A Barton--BOS Choc JB K Hooper--22 Blue
SD Barton--6 Choc JB Hooper--5 Tort JB Hooper--6
Steel JD Hooper--9 Gray SB L. Nixon

5-06 North Central Missouri RC at Holt MO 13 Dutch Judge
P Naylor--
BOR Blk JD NM--BOS Blue SB NM--4 Blk JD NM--3 Blue
SD NM--3 Choc JB NM--2 Tort JD B Evertson--1 Gray
DF J W Halbrook

5-06 Central Wisconsin RBA at Marshfield WI 47 Dutch
Judge R Gehr--
BOR Gray JB S & C Hartwig--BOS Tort JD NM--17 Blk
JD NM--2 Blue SB NM--14 Choc SD NM--10 Tort JD
NM--4 Gray J B Harwig

5-06 Essex Co RBA at Topsfield MA 19 Dutch Judge A
Burke--
BOR Tort SD W Mackinnon--BOS Blue JB W Mackinnon--
5 Blk SB Mackinnon--1 Blue JB Mackinnon--4 Choc JB
Mackinnon--9 Tort SD Mackinnon

5-12 Roadrunner Dutch Club at Apple Valley CA 56 Dutch Judge M Phifer--
 BOB Blk SB J Duncan--BOS Blk JD R Lehman--24 Blk SB Duncan--5 Blue SB NM--12 Choc SD NM--12 Tort SB NM--3 Steel JB J Purpus

5-12 Southeast NE RC at Beatrice NE 16 Dutch Judge B Wallace--
 BOB Tort JD B Everston--ROS Tort SB C Starr--2 Blk JB D & D Crook--7 Choc JD Starr--3 Tort JD Everston--4 Gray JD Crook

5-12 Cahawkus RRA at Little Valley NY 99 Dutch Judge D Holcomb--
 BOB Blue SD Schilling & Veechio--BOS Blk SB S Esterly--28 Blk SB Esterly--25 Blue SD Schilling & Veechio--17 Choc SD J & R Andrews--24 Tort SB K & D Emerson--4 Steel SB J & R Andrews--6 Gray JB Esterly

5-12 St Joe Valley RBA at Argos IN 80 Dutch Judge T E Reed--
 BOB Blk JB K Kral--BOS Blk JD Kral--27 Blk JB Kral--12 Blue JB B Hewson--16 Choc JB Kral--13 Choc SB Hewson--5 Steel SB Reikum--7 Gray JD L & J Powers

5-12 Western Michigan RBA at Lowell MI 1 Dutch Judge M Henry--
 BOB Choc SR B B McKinsey

5-12 Central Texas RC at Austin TX 32 Dutch Judge C M Corrali--
 BOB Blk SD M & J Mills--BOS Tort JB Mills--11 Blk SD Mills--4 Blue SD Mills--7 Choc SD N & T Berry--6 Tort SD Mills--2 Steel SB Mills--2 Gray SD Mills

5-12 Garden City RBA at Missoula MD 11 Dutch Judge W Carlton--
 BOB Blk SR K Norwood--BOS Tort JD Norwood--6 Blk SB Norwood--3 Tort JB Norwood

5-12 Chautaukus Area RBA at Little Valley NY 94 Dutch Judge A Butler--
 BOB Blue SD Schilling & Veechio--BOS Blk SB S Esterly--25 Blk SB Esterly--254 Blue SD Schilling & Veechio--11 Choc SR S Stenson--22 Tort JD K & D Emerson--5 Steel SR Schilling & Veechio--6 Gray JB Esterly
 Best In Show! Rest In Show!
 Congratulations! Congratulations!

5-12 South Western Minnesota RC at Reading MN 8 Dutch Judge F Steinhoff--
 BOB Blk JB J Bach--ROS Blk JD Bach--4 Blk JB Bach--1 Blue SD Bach--1 Tort JB Bach--1 Steel JB Bach--1 Gray JB Bach

5-12 Smokey Mountain RBA AT Knoxville TN Dutch Judge J Hillard--
 Bob Blue SD F & K Mullinax--BOS Tort JB Mullinax--19 Blk SD Mullinax--5 Blue SD Mullinax--2 Choc JD Mullinax--7 Tort JB Mullinax--3 Steel SB Mullinax--8 Gray SD Mullinax

5-12 Smokey Mountain RA at Knoxville TN 58 Dutch Judge T L Andrews--
 BOB Gray JB F & K Mullinax--BOS Tort SD Mullinax--26 Blk JD Mullinax--8 Blue SD Mullinax--3 Choc JD Mullinax--8 Tort SD Mullinax--3 Steel SD Mullinax--10 Gray JB Mullinax

5-12 Springfield RBA at Ozark MO 15 Dutch Judge T Thomas--
 Winners All NM

5-12 Cape Cod RBA at Topsfield Ma 9 Dutch Judge A Burke--
 BOB Tort SB K Sugalski--BOS Choc SD S Blanchard--2 Blue JD Blanchard--2 Choc SD Blanchard--3 Tort SB Sugalski--2 Gray JD Blanchard

5-12 High Desert RBA at Apple Valley CA 56 Dutch Judge J Shultz--
 BOB Blk JD J Purpus--BOS Blk JB NM--24 Blk JD Purpus--5 Blue SB NM--12 Choc SD NM--12 Tort JD K Kuprens--3 Steel JB J Purpus

5-13 Garden City RBA at Missoula MT 7 Dutch Judge F Cremer--
 BOB Blk SB K Norwood--BOS Blk SD NM--4 Blk SB Norwood--1 Blue SB NM--2 Tort JB Norwood

5-13 Northwestern PA RBA at Albion PA 25 Dutch Judge J Green--
 BOB Blk JD K & D Emerson--BOS Blk SB R Glenn--8 Blk JD Emerson--5 Blue SB Emerson--3 Choc JB Glenn--9 Tort JD Emerson

5-19 Inland Empire RBA at Spokane WA 33 Dutch Judge T Keyes--
 BOB Blk JD J & R Coffelt--ROS Tort JB K Norwood--7 Blk JD Coffelt--7 Blue JD Coffelt--3 Choc SR S Calahan--7 Tort JB Norwood--5 Steel SD T Preston--4 Gray JB J Kuntz

5-19 Conteras Cove RE at Copperas Cove TX 51 Dutch Judge D Gehr--
 BOB Blk JB M & K Johnson--BOS Tort SD Johnson--18 Blk JB Johnson--6 Blue JB J Clifton--7 Choc JD NM--10 Tort SD Johnson--4 Steel JB B & S Redd--6 Gray JD Clifton

5-19 Saginaw Valley RBA at Saginaw MI 45 Dutch Judge K Ehlers--
 BOB Choc SB A Micallef--BOS Tort SD E McKinley--15 Blk SR B Storey--6 Blue SB Micallef--8 Choc SB Micallef--13 Tort JB McKinley--3 Steel SB Storey--1 Gray SD Storey

5-19 Crazy Eight RBA at Canby OR 34 Dutch Judge R Hassenpflug--
 BOB Blk SB NM--BOS Gray SD Reeves--12 Blk SB NM--4 Blue SD Reeves--1 Choc SB NM--4 Tort SB Reeves--2 Steel SR Reeves--11 Gray SD Reeves

5-19 Lawrence Co RBA at Lawrenceburg TN 11 Dutch Judge C
Richenbach--Winners All NM

5-19 Unonua Valley RB at Oregon 3 Dutche M Kolb--Winners
All NM

5-19 Suburban Twins RC at Farmington MI 7 Dutch Judge B
Kach--
BOB Blk JB J Bach--BOB Blk JD Bach--4 Blk JB Bach--
2 Blue SD NM--1 Steel JB NM

5-19 Finger Lakes RBA at Waterloo NY 71 Dutch Judge B
VanVelzen--
BOB Blk JP K & D Emerson--BOB Blue SB Emerson--19
Blk JD Emerson--13 Blue SD Schilling & Veechio--10
Choc SD NM--23 Tort SD JPierce--1 Steel SD Schilling
& Veechio--5 Gray SB J & R Andrews

5-19 Central Connecticut RBA at North Haven CN 13 Dutch
Judge L Engel--
BOB Blk SB N Carpenter--BOB Gray JD NM--7 Blk SB
Carpenter--2 Blue SB Carpenter--1 Choc SB NM--2
Gray JB NM

5-20 Ohio State RRA at Columbus OH 80 Dutch Judge J
Frizzell--
BOB Blk JD A Barton--BOB Gray SB C Nixon--20 Blk
JD Barton--24 Blue SD Barton--9 Choc SD T Uran--11
Tort SD Uran--9 Steel JD Hooper--7 Gray JD L Nixon
Best In Show! Best In Show!
Over 1900 Rabbits
Congratulations! Congratulations!

5-20 National Capital RRA at Grithersburg MD 46 Dutch
Judge R Coca--
Blk Tort SB S Esterly--BOB Choc JD R Wood--12 Blk J
Wood--6 Blue SB G & M Henersley--15 Choc SB M
McNamara--3 Tort SB Esterly--2 Steel JD Esterly--
8 Gray SR S Meck

5-20 Kankakee Valley RB at Kankakee IL 41 Dutch Judge T
Reed--
BOB Blk JB D Hibbard--BOB Blk JD K Kral--19 Blk JB
Hibbard--10 Blue JD Kral--6 Choc JB Kral--2 Tort JD
E Corn--4 Gray JD Kral
Best In Show! Best In Show!
Congratulations! Congratulations!

5-20 Crazy Eight RBA at Carby OR 30 Dutch Judge B Shaftes--
BOB Gray JD NM--BOB Blk JB M Reeves--10 Blk JB
Reeves--4 Blue SD NM--1 Choc SB NM--4 Tort JD J
Patrick--1 Steel SB G & M Parmer--10 Gray JD NM

5-20 Washington St RBA at Spokane WA 14 Dutch Judge D
Brak--
BOB Gray JD J Kuntz--BOB Blk SB L & B Gregg--4 Blk
SB Gregg--2 Blue DZ--2 Choc SB S Calahan--2 Tort
SB NM--4 Gray JD Kuntz

5-26 Inlitan RBA at St Croix Falls WI 30 Dutch Judge M
Koenig--
BOB Blk JB S & C Hartwig--BOB Blk JD K & S Fait--
10 Blk JB S Hartwig--7 Blue SB NM--7 Choc JB Fait--6
Tort JD J & S Rabbits--1 Gray JB Hartwig

5-26 Hooster Dutch RBA at Rutland VT 31 Dutch Judge T
S. Freed--
BOB Blk S L Shaw--BOB Blk SD C Shaw--42 Blk SB
Shaw--24 Blue SB K & G Cummings--15 Choc JB E
Huson--13 Tort JB R & K Shull--7 Steel JD K
Hoover--1 Gray SD V & M Dill

5-27 Nebraska R & CRA at Springfield NE 9 Dutch Judge W
Grebner--
BOB Tort JD B Evertson--BOB Blk SB S Peterman--5
Blk SB Peterman--1 Blue SB NM--2 Choc SB D & M
Jackson--1 Tort JD Evertson

5-27 Green Mountain RBA at Rutland VT 2 Dutch Judge A
Burke--All Winners NM

5-27 Texas Panhandle RBA at Amarillo TX 31 Dutch Judge T
Thomas--
BOB Blk JD NM--BOB Blue JB B & D Rabb--16 Blk JD NM--
5 Blue ST B & D--7 Choc SD B & D--2 Tort JB NM--1
Steel SB B & D

5-27 Huron Co RBA at Norwalk OH 15 Dutch Judge M D'Amico--
BOB Blue SR B & B Przybylowicz--BOB Choc JD Mike's
Rabb--6 Blk JB B & B--3 Blue SB B & B--3 Choc JDF
Mike's--1 Steel SB L Nixon--2 Gray JD Nixon

5-27 Texas Panhandle RBA at Amarillo TX 30 Dutch Judge T
Loomis--
BOB Blue JB B & D Rabb--BOB Blk JD NM--16 Blk JD NM--
5 Blue JB B & D--7 Choc SD B & D--2 Tort JB NM--1
Steel SB B & D

5-27 San Gabriel Valley RA at Valinda CA 40 Dutch Judge G
Gianni & M Lovejoy--
BOB Blk JB NM--BOB Tort JD NM--12 Blk JB NM--2 Blue
SB NM--13 Choc JD NM--100 Tort JD NM--4 Steel SB J
Purpus--1 Gray JR Purpus

*** CORRECTION ***


There was an error in the Open National Dutch Show Report. Sue and Penn Peters of West Virginia showed the 3rd place Black Jr. Doe in North Haven. The sweepstakes Chairman is being notified of this so as to correct the points.

8/91 :
 Myrl & Maxine Milhahn
 480 Green Street
 Constantine, Mi. 49042
 Phone: (616) 435-3772
 DUTCH
 BLACK
 BLUE
 CHOCOLATE
 TORTOISE

10/90
 ANTHONY MICALLEF
 18250 Bethel Church Road
 Manchester, Michigan 48158
 " D U T C H "
 Black - Blue - Chocolate - Tortoise


10/90
 JACK and RUTH WIREMAN
 of
 JACK'S BUNNIES
 5475 Seeman St. S.W.
 Navarre, Oh. 44662
 DUTCH 40 years + DUTCH

6/90
 ROHRER'S DUTCH RABBITRY
 DAN ROHRER, JR.
 16 Rosewood Drive
 Hagerstown, Md. 21740
 " Fancier of Blacks and Blues "
 "No Shipping" "No Shipping"

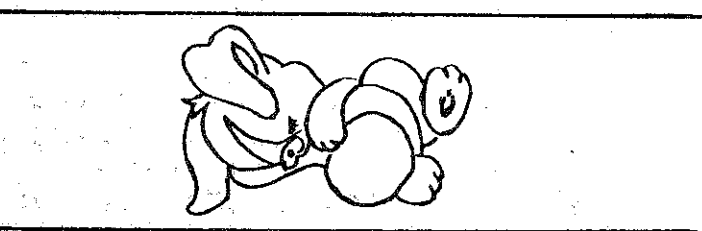


8/90
 L'IL RED DUTCH HUTCH
 GORDON and MARILYN HAMERSLEY
 Breeders
 24931 Woodfield School Rd.
 Gaithersburg, Md. 20679
 Phone (301) 253-3716


10/90
 JACK and CHARLOTTE COLBORN
 1015 S. Allen
 Chanute, Kansas 66720
 DUTCH: Black & Blue
 FLORIDA WHITES



12/90
 ANDY & SOPHIA BARTON
 7580 Columbus-Lancaster Rd. Rt. 2
 Carroll, Oh. 43112
 Long time breeder and supporter



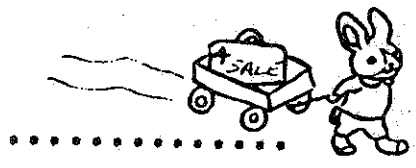
12/90
 TODD SCHOONOVER
 Box 138
 Hollandale, Mn. 56045
 DUTCH





Blacks
 Blues
 Choc.
 12/90
 1 Best in Show - 1987
 Best Opp. Black ARBA Conv. 1988

12/90
 Compliments of
 DIXIELAND DUTCH RABBIT CLUB
 Conroe, Texas
 Have FUN - Raise and Show Dutch

9/90
 BUCK'S DUTCH RABBITRY
 Michele Buck
 8452 Yale Rd. Rootstown, Oh. 44272
 (216-654-4655)



DUTCH: Black, Blue, Gray, and Steel
 Show and Breeders from G.C. lines
 Also Broken and Solid Holland Lops
 many colors and reasonably priced.

12/90
 MARV'S RABBITRY
 Marvin H. Fosso
 7223 Hwy. 53
 Britt, Mn. 55710
 DUTCH: Black
 Blue, Chocolate
 Tortoise

12/90
 MIKE and JEAN MILLS
 The Hop Stop Rabbitry
 Rt. 1, Box 115 May Rd.
 Splendora, Texas 77372
 Phone: (713)-689-8463

AMERICAN DUTCH RABBIT CLUB PUBLICITY ITEM ORDER FORM

NAME: _____

ADDRESS: _____

CITY: _____ STATE: _____ ZIP: _____

PHONE: _____

NAME OF ITEM	HOW MANY	SIZE	COLOR	PRICE
Pedigree Book				\$4.00
Arm Patches (Black/Blue/Choc.)				\$3.00
Dutch Decal (inside or outside)				\$1.25
Scratch Pads				\$1.25
Caps - Dutch Motto (Black/Blue)				\$5.50
Money Clip (copper/silver)				\$6.00
Dutch Lapel Pin (Blk/Blue/				\$2.00
Tote Bag - Dutch emblem				
assorted colors				\$6.50
Plastic Tumblers (white-Dutch emblem)				
\$1.50 each or set of six for \$7.75				
Lined Jacket (Dutch emblem) adult				
Royal Blue or Maroon S-M-L-XL				\$45.00
Unlined Jacket (Dutch emblem) adult				
Royal Blue or Maroon S-M-L-XL				\$37.50
Childs T-Shirt (Dutch & motto)				
S-M-L White or Blue				\$6.00
Infants T-Shirt (Dutch & motto)				
6 mo. - 9 mo. "limited quantity"				\$4.25
Adult T-Shirt (Dutch & motto)				
S-M-L-XL White				\$7.00
Deck of Playing Cards				\$4.50
Glass Cups (stackable) (Dutch)				\$3.50
Sweatshirts-grey w/dutch S-M-L				\$20.00
special order - adult XL-XXL				\$22.50

Subtotal _____

10% Handling charge _____

TOTAL _____

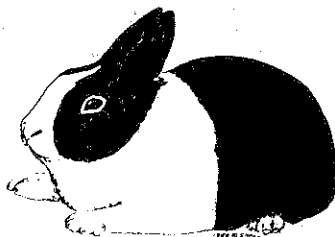
Mail this blank along with your check or money order to:

Barb & Al Butler
4310 Ruichville Drive S.W.
Canton, Oh. 44706
Phone: 216-484-1977

PLEASE MAKE CHECKS PAYABLE TO: ADRC - PUBLICITY

WELCOME NEW MEMBERS

<u>NAME</u>	<u>STATE</u>	<u>BY</u>
James Clark	OH	Eddie Fisher
John R Frederick	IN	Reginald Van Cleave
Tony Larson	MN	
Victor L McKinsey	MI	Lisa Burnham
Elizabeth Obenour	OH	Sue Stockmaster
Travis Howard	OR	Critter Cluster 4-H RC
Bob/Trisha Mitzel	OH	Miami Manor Rabbitry
Ryan Martin Mitzel	OH	Miami Manor Rabbitry
Marie E Heindl	MD	
Barbara A Poole	OH	Barb/Al Butler
Jennifer Angell	NY	
Jason Spurr	IN	
John Spurr	IN	
Susan Uecker	WI	
Laura Whisney	MN	
Betty Hoagland	MN	
Matt Barnard	OH	Jack Wireman
Megan Burgess	CA	ADRC Pamphlet
Joshua Swisher	ND	John Bach
Victoria E Carstens	MN	Anne Philipson
James Holsopple	IN	Larry/Jeanine Powers
Darin Holsopple	IN	Larry/Jeanine Powers
Eric Holsopple	IN	Larry/Jeanine Powers
Mrs Lynnel M Arnold	CA	Rose Mead
Kristy Kay Ontko	OH	Sue Stockmaster
Amanda Klepps	NV	
Cheryl L Howell	CANADA	
Robert/Nancy Ellis	IN	
Aaron R Slater	IN	
Ryan Menning	WI	
Judy Parrow	ND	
Lisa Esposito	CA	



NOTICE ABOUT TAMPA

Jack Wireman reserved 30 rooms in Tampa for the 1990 ARBA Convention. Be certain to say that you are with the AMERICAN DUTCH RABBIT CLUB. These rooms are on a FIRST COME FIRST SERVE BASIS!

DAYS INN TAMPA NORTH
 I-75 and Fla. 54 W. - 150110 Hwy. 54 W.
 Zephyrhills, Fl. 34249
 Phone: 8 B-973-0155

\$25.00 plus tax
 1 - 4 people per room

The Dutch banquet is set for 7:00 PM Wednesday at DUFFS. This is located at I-275 and Busch Blvd. on the way to the showroom.

You can still send specials for the 1990 ARBA Convention in Tampa. Send any donations to the ADRC Secretary. If you have a preference as to where they are to be placed, please specify with your check. THANK YOU!

ADRC NOMINATION RESULTS

YOUTH POLL: 8 Ballots

1992 NATIONAL DUTCH SHOW JUDGE

	<u>VOTES</u>
DR. T.E. REED	3
KARL EHNIS JR.	2
JACK PUGH	1
VICTORIA SAMARIS	1
JAN COFFELT	1

ADRC NOMINATION RESULTS

ADULT BALLOTING: 78 Ballots

1992 NATIONAL DUTCH SHOW JUDGE

	<u>VOTES</u>
DR. STEPHEN ROUSH	2
JAN COFFELT	5
GLEN CARR	21
HARRY RICE	1
DICK GEHR	12
SCOTT WILLIAMSON	10
LARRY BENGTON	6
GARY GRIMM	1
KARL EHNIS	4
JIM KELLY	2
AL BUTLER	9
WENTON CARLTON	4
BOB SCHWARTE	1

1992 ARBA CONVENTION JUDGE

	<u>VOTES</u>
BOBBY SCHOTT	2
SCOTT WILLIAMSON	16
DICK GEHR	9
HARRY RICE	1
GLEN CARR	17
DR. T.E. REED	11
CALEB THOMAS	3
GARY GRIMM	1
JAN COFFELT	2
FRED CREMER	1
KARL EHNIS	1
LARRY BENGTON	5
AL BUTLER	2
CARL FILIATER	1
WENTON CARLTON	3
GARY FELLERS	1
JIM KELLY	1
CONALL ADDISON	1

ELECTION CHAIRPERSON:

*John Baker, New York

YOUTH ONLY

AMERICAN DUTCH RABBIT CLUB
FINAL ELECTION BALLOT

YOUTH ONLY

"YOUTH ONLY"

Seal marked ballot in ballot envelope provided. Place the ballot envelope in an outer envelope and seal. Mark the word "BALLOT" on the outer envelope and mail to: AMERICAN DUTCH RABBIT CLUB NORMA HART, SECRETARY 190 NORTH FIRST AVENUE COAL CITY, IL 60416. The voter's name and address must appear on the outer envelope for verification and to determine the voter's eligibility. If the above information is not included, that ballot will become null and void. DO NOT INCLUDE ANY OTHER CORRESPONDENCE WITH YOUR BALLOT! Ballots MUST BE RECEIVED by September 30, 1990 in order to be counted.

* Please be advised that the youth ballot is for the National Dutch Show Judge consideration only. The show sponsors are not required to hire a specific youth judge but they are requested to give as much consideration as possible to the youth's choice whenever possible.

1992 YOUTH NATIONAL DUTCH SHOW JUDGE *

VOTE FOR ONE ONLY

_____ DR. T.E. REED

_____ KARL EHNIS

VOTE FOR ONE ONLY

BALLOTS MUST BE RECEIVED BY SEPTEMBER 30, 1990 IN ORDER TO BE COUNTED

PLEASE Take The Time To Vote!

8/90

A. S. DUTCHERY

Since 1949

BREEDER

FANCIER

SHOW

ADRC member 32 years



Bill Geitzenauer
68 W. Valley Brook Rd.
Long Valley, N.J. 07853
(201) 876-3838

6/91

B E R G E N E R A B B I T R Y



QUALITY DUTCH

Also:

Palominos, Holland Lops, N.Z. Whites

14130 East 63rd Street So.
Derby, Ks. 67037 (316) 776-2751

12/90

DUTCH BELGIAN HARE CAVIERS

BUTLER'S RABBITRY, INC.
4310 Richville Dr. SW
Canton, Oh. 44706

Phone: 261-484-1977



Al - ARBA Rabbit Judge # 401

Barb - ARBA Rabbit & Cavy Judge # 438

10/90

R & K RABBITRY

Reggie & Kevin Shull
3212 Becker Rd.

Woodburn, In. 46797

PHONE: (219) 632-4265
(219) 925-6241



1985 NDS B.O.B. 1985 NDS Best Fur
1987 NDS B.O.S.

BLACKS - BLUES - CHOCOLATES
DUTCH

TORTS - STEELS - GRAYS

02/91

HILLBILLY BONNIES RABBITRY

Tom, Zandra, & Amy Belson
7286 Barryville Rd.
Nashville, Mi. 49073
(616) 758-3202



WILL SHIP

Tortoise Dutch our Specialty

: also Mini-Rex (solid & broken)

2/91

NOR - DICK RABBITRY

Norma Hart & Dick Gehr
190 N. First Ave.
Coal City, Il. 60416
(815) 634-3006



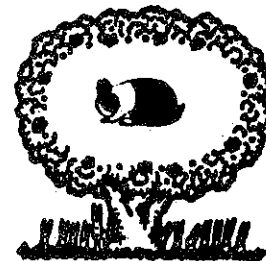
MOST COLORS OF DUTCH
HOLLAND LOPS

Dick - ARBA Judge & Registrar
533

8/91

M-V RABBITRY

Evelyn Corn
195 Marguerite St.
Coal City, Il. 60416
Phone (815) 634-4568



MINI-LOPS " DUTCH " CALIFORNIANS

6/91 :
 KEVIN HOOPER :
 585 Cherrybend Rd. :
 Wilmington, Oh. 45177 :
 (513)-584-4669 :
 DUTCH - All colors :
 B.O.S. 1988 ARBA Conv. :
 1st & 2nd pl. fur 1989 ARBA Conv. :
 WILL SHIP :



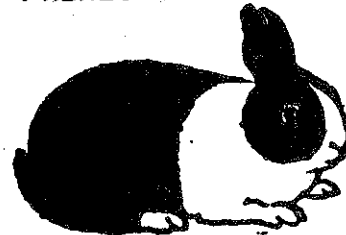
6/91 :
 B & B DUTCH RABBITRY :
 Black - Blue - Chocolate :
 BILL & BECKY PRZYBYLOWICZ :
 15 Aspen Dr. Amherst, Oh. 44001 :
 Phone: (216) 988-2103 :
 Best Fur 88 ARBA Conv :
 Best Chocolate Display 88 ARBA Conv :
 Best Chocolate Display 88 NDS :



6/91 :
 " CARL DECKER " :
 935 Clay Avenue :
 Stroudsburg, Pa. 18360 :
 1-717-421-8764 :
 NO SHIPPING :
 BLACK BLUE CHOCOLATE :



8/91 :
 L'IL RED DUTCH HUTCH :
 GORDON & MARILYN HAMERSLEY :
 BREEDERS :
 24931 Woodfield School Rd. :
 Gaithersburg, Md. 20882 :
 Phone: (301) 253-3716 :



8/91 :
 D U T C H :
 Black - Blue :
 BROCK WIECHMANN :
 Box 278 :
 Flanagan, Il. 61740 :
 Pair "AH" Dice Rabbitry :
 (815) 796-2944 :



8/91 :
 Pedigreed - Registered Stock :
 NCRBA :
 ARBA :
 ADRC :
 URBA :
 HLRC :
 Holland Lops :
 Broken & Solids :
 Dutch Torts :
 Mrs. Carol Snyder • 604 Sunnybrook Dr. :
 Monroe, N.C. 28110 :
 DO NOT SHIP :



8/91 :
 B O - N A T ' S S T R A I N :
 BLACK - BLUE - CHOCOLATE DUTCH :
 OUR RABBITS ARE RAISED IN PARADISE :
 CHAMPION LINE :
 Best of Breed :
 Best Opposite Sex :
 Many First Place :
 1989 :
 Phone: 203-779-1785 :
 NAT and BOB'S Hop-A-Longs :
 Bob and Natalie Nicoll :
 173 Paradise Drive :
 P.O. Box 138 :
 Brooklyn, Conn. 06234-0138 :
 Cages and Supplies :
 WE SHIP :
 MEMBER: :
 Eastern Dutch R.F.C. :
 A.R.B.A. member :
 USDA Lic. # 16B-006 :



(ADULT PAID MEMBERS ONLY)

AMERICAN DUTCH RABBIT CLUB

(ADULT PAID MEMBERS ONLY)

FINAL ELECTION BALLOT

Seal marked ballot in ballot envelope provided. Place the ballot envelope in an outer envelope and seal. Address the outer envelope to: AMERICAN DUTCH RABBIT CLUB
% NORMA HART, SECRETARY 190 NORTH FIRST AVENUE COAL CITY, IL 60416. Mark the word "BALLOT" on the outer envelope. DO NOT INCLUDE ANY OTHER CORRESPONDENCE IN WITH YOUR BALLOT. The voter's name and complete address MUST APPEAR ON THE OUTER ENVELOPE for verification and to determine the voter's eligibility and district only. If the above information is not included, that ballot will become null and void. BALLOTS MUST BE RECEIVED BY SEPTEMBER 30, 1990 IN ORDER TO BE COUNTED.

OFFICE OF THE PRESIDENT *

_____ WENTON CARLTON

(Write In Candidate)

Three Year Term Vote For ONE

OFFICE OF DIRECTOR, DISTRICT #1 *

_____ JACK WIREMAN

_____ JOHNNY J. BAKER

(Write In Candidate)

Three Year Term, Vote For ONE

OFFICE OF DIRECTOR, DISTRICT # 2 *

(Write In Candidate)

Three Year Term, Vote For ONE

OFFICE OF DIRECTOR, DISTRICT # 3 *

_____ FRAN SCHESSLER

(Write In Candidate)

Three Year Term, Vote For ONE

YOU MAY ONLY VOTE FOR A DIRECTOR IN YOUR DISTRICT

DISTRICT #1: CT, DE, FL, GA, ME, MD, MA, NH, NJ, NY, NC, OH, PA, RI, SC, VT, VA, WV

DISTRICT #2: AL, AR, IL, IN, IA, KY, LA, MI, MN, MS, MO, TN, WI

DISTRICT #3: AK, AZ, CA, CO, HI, ID, KS, MT, NE, NV, NM, ND, OK, OR, SD, TX, UT, WA, WY

1992 NATIONAL DUTCH SHOW JUDGE *

_____ DICK GEHR

_____ SCOTT WILLIAMSON

_____ AL BUTLER

VOTE FOR ONE

1992 ARBA CONVENTION JUDGE *

_____ SCOTT WILLIAMSON

_____ DR. T.E. REED

VOTE FOR ONE

PLEASE TAKE THE TIME TO VOTE

BALLOTS MUST BE RECEIVED BY SEPTEMBER 30, 1990 IN ORDER TO BE COUNTED

SHOW SANCTION APPLICATION

DATE OF SHOW _____ ARBA SHOW CODE # OPEN _____

SPONSORING CLUB _____ # YOUTH _____

LOCATION OF SHOW _____

SHOW SECRETARY _____

ADDRESS _____

CITY _____ STATE _____ ZIP _____

Enclose \$8.00 for an Open Sanction and \$5.00 for a Youth Sanction and mail to:
AMERICAN DUTCH RABBIT CLUB, NORMA HART, SEC'Y, 190 N. FIRST AVE., COAL CITY,
ILLINOIS 60416.

PLEASE APPLY FOR A SANCTION AT LEAST 60 DAYS PRIOR TO SHOW DATE

THANK YOU

ADRC MEMBERSHIPS FEES

\$7.00 SINGLE ADULT \$9.00 HUSBAND AND WIFE \$5.00 YOUTH UNDER 18YRS.

LIFE MEMBERSHIP MAY BE PURCHASED FOR 20 TIMES THE ADULT MEMBERSHIP FEE

- * CANADIAN MEMBERSHIPS MUST ADD AN ADDITIONAL \$8.00 TO COVER MAILING EXPENSES (ALL FEES TO BE PAID IN U.S. FUNDS)
- * FOREIGN MEMBERSHIPS MUST ADD AN ADDITIONAL \$10.00 TO COVER MAILING EXPENSES (ALL FEES TO BE PAID IN U. S. FUNDS)

MEMBERSHIP APPLICATION

I hereby make application for membership in the AMERICAN DUTCH RABBIT CLUB, INC., and enclose the amount for dues and fees. I agree, if accepted, to abide by the Constitution and By-Laws of this Organization and to further the interest of the AMERICAN DUTCH RABBIT CLUB in every way possible.

DATE _____

NAME _____ ADULT _____ YOUTH _____ AGE _____

STREET ADDRESS _____

BOX NUMBER _____

CITY _____ STATE _____ ZIP _____

NEW _____ RENEWAL _____

RECOMMENDED BY _____

MAIL THE CORRECT FEES TO: THE AMERICAN DUTCH RABBIT CLUB
Norma Hart, Secretary/treasurer
190 North First Avenue
Coal City, Illinois 60416

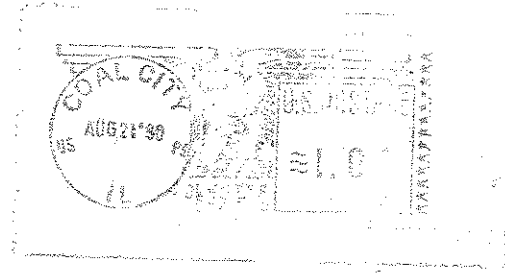


"YOU CAN'T BEAT THE DUTCH"

"FIRST CLASS" Dutch Reporter mailing is available for a additional \$8.00 per Year

YOU MAY JOIN THE AMERICAN RABBIT BREEDERS ASSOCIATION BY SENDING YOUR DUES DIRECTLY TO THEIR OFFICE C/O GLEN CARR, SEC'Y. 1925 S. MAIN ST., BOX 426, BLOOMINGTON, ILLINOIS 61704. DUES ARE: SINGLE ADULT \$10.00 HUSBAND?WIFE \$13.00 YOUTH \$5.00. For further information contact their office by writing to the above address or phone (309) 827-6623.

THE DUTCH REPORTER
Dick Gehr, Editor
190 N. First Ave.
Coal City, Il. 60416



D American

U

T



C

NOTICE: BE CERTAIN TO CHECK
YOUR EXPIRATION DATE
LISTED ON YOUR LABEL
AND RENEW PROMPTLY.

SEND TO:



H

You
Can't Beat
The Dutch

Rabbit Club